

ASSESSMENT REPORT

GEOLOGY AND GEOCHEMISTRY

GEOPHYSICS

UFSa PROPERTY

OMINECA

NTS M93N/9E

BY

ARTHUR A.D. HALLERAN

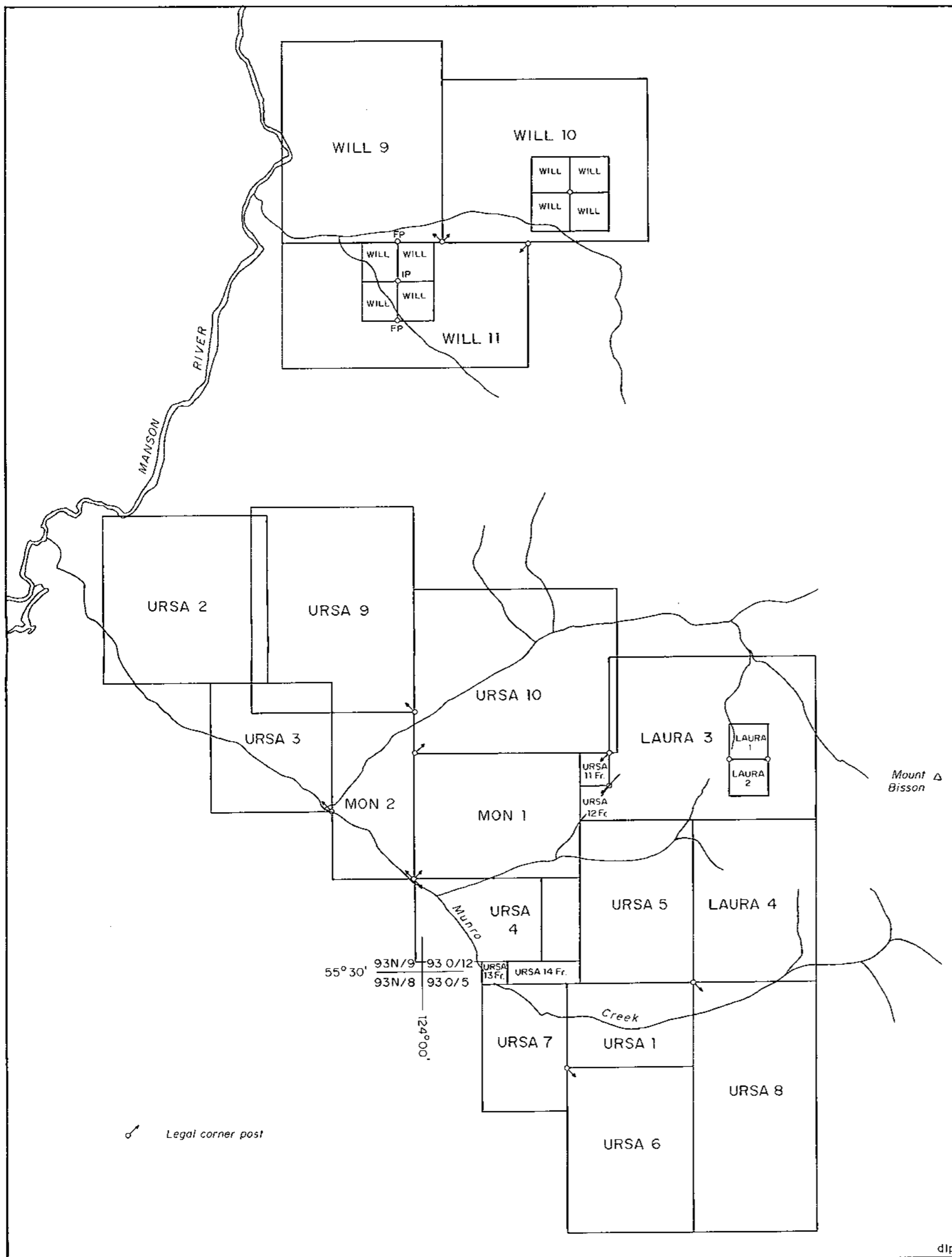
SEPTEMBER 13, 1988

17872

PART 2

OF 2

Part 1 inside



GEOLOGICAL BRANCH  
ASSESSMENT REPORT

17,872

Part 2 of 2

CHEVRON MINERALS LTD.

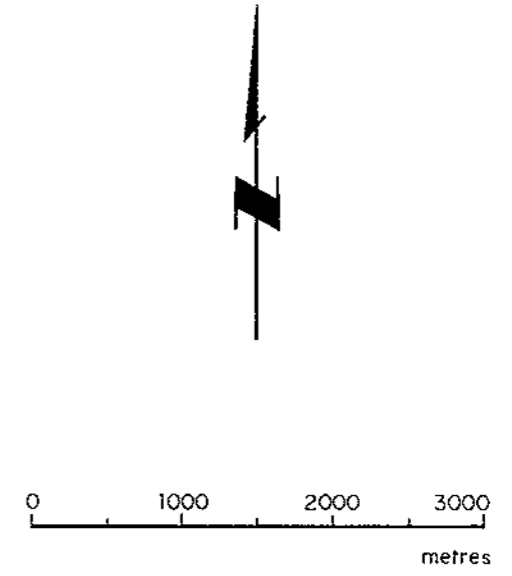
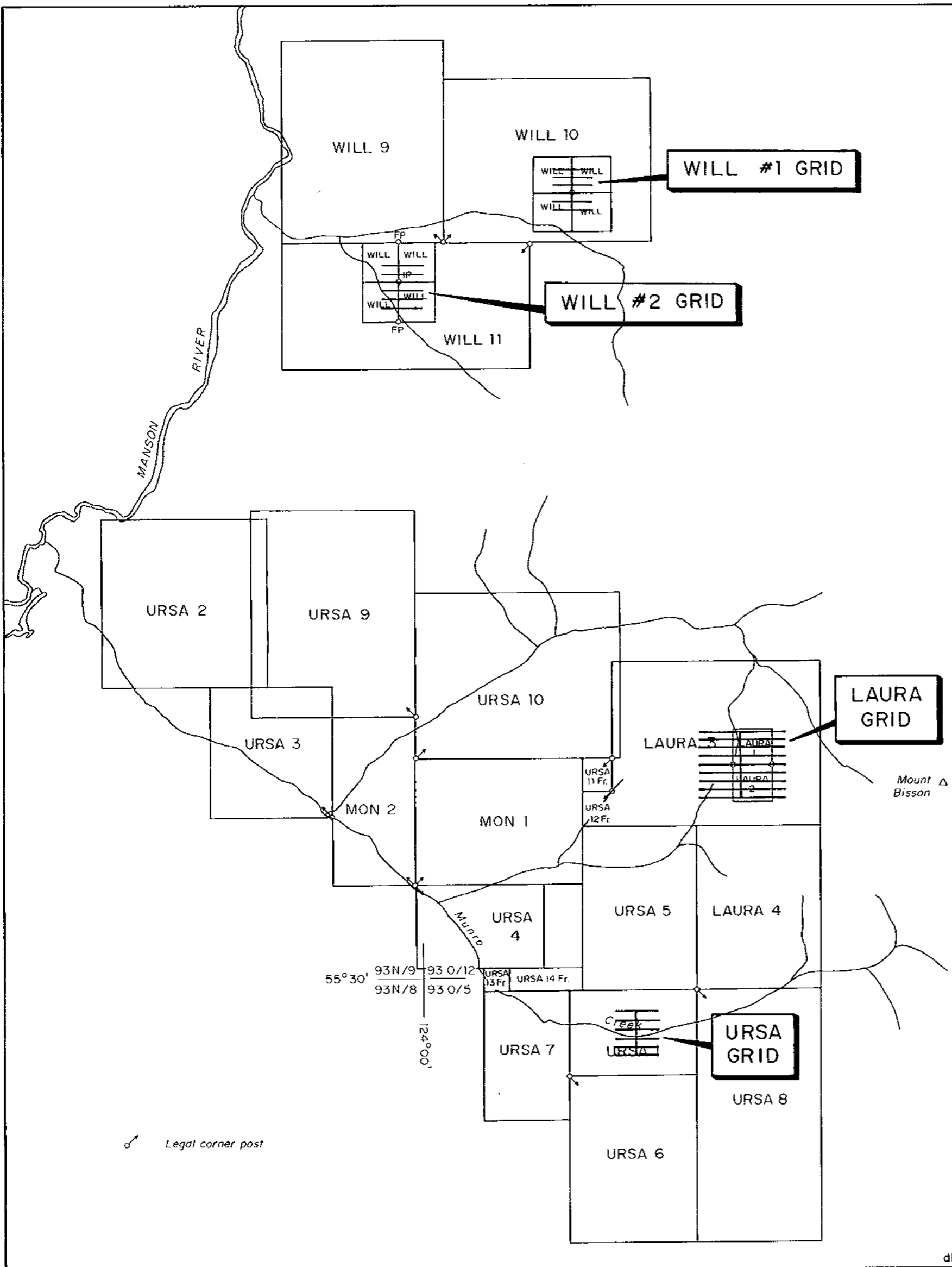
OMINECA M.D., B.C.

URSA PROPERTY  
CLAIM MAP

NORTHWEST GEOLOGICAL CONSULTING LTD.

SCALE	DATE	NTS	DWG N <sup>o</sup>
1:50000		93 N/8,9 93 O/5,12	2

dip



17,872  
Part 2 of 2

CHEVRON MINERALS LTD.			
OMINECA M.D., B.C.			
URSA PROPERTY GRID LOCATION MAP			
NORTHWEST GEOLOGICAL CONSULTING LTD.			
SCALE	DATE	NTS	DWG N <sup>o</sup>
1:50000		93 N/8,9 93 O/5,12	32A

dip

93 00 E

94 00 E

95 00 E

96 00 E

97 00 E

98 00 E

99 00 E

100 00 E

101 00 E

102 00 E

95 00 N

94 00 N

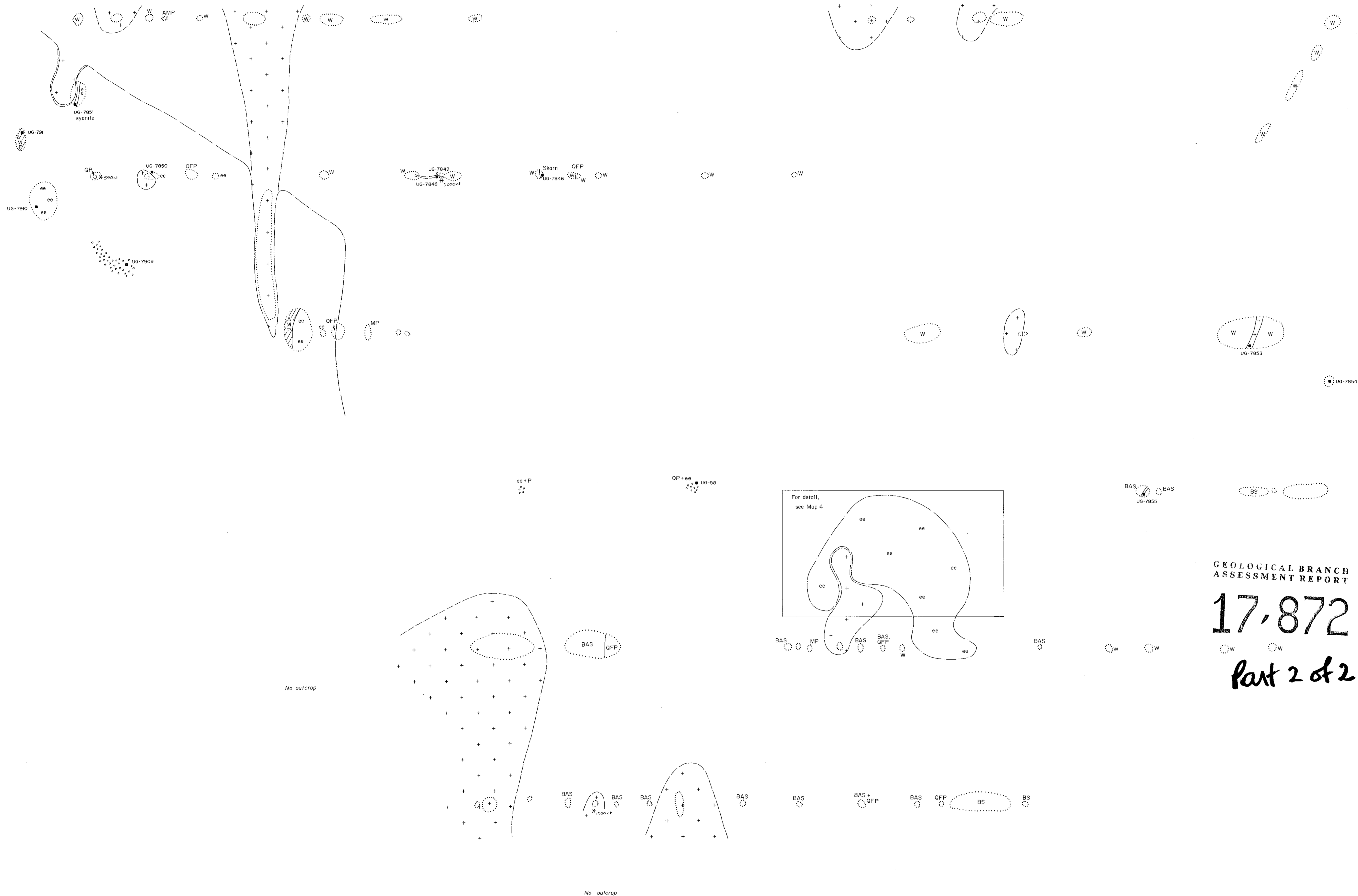
93 00 N

92 00 N

91 00 N

90 00 N

89 00 N



Scale 0 20 40 60 metres

LEGEND

Hosted by Proterozoic Wolverine Complex

- [QMP] Quartz monazite pegmatite
- [AMP] Allantite monazite pegmatite
- [QFP] Quartz feldspar pegmatite
- [MP] Magnetite bearing pegmatite
- [NSP] Nepheline syenite pegmatite
- [ee] Alkalic alteration to banded aegirine-augite alkali-feldspar syenite
- [BS, BAS] Biotite schist, biotite amphibole schist
- [W] Quartz ribbon metasediment - biotite quartz feldspar metased., resembling a monzodiorite intrusive
- [+ + +] Monzonite
- [AA] Aegirine-augite monzodiorite

SYMBOLS

- 500 X Scintillometer high
- UG-7846, UG-7829(a) Rock sample, chip sample
- X UG-7827 Soil sample
- All Allantite
- Mon Monazite
- Mog Magnetite
- Geological boundary: defined, inferred
- Bedding: vertical, inclined
- Foliation: vertical, inclined
- Outcrop
- Talus
- Limit of alkalic alteration

GEOLOGICAL BRANCH ASSESSMENT REPORT

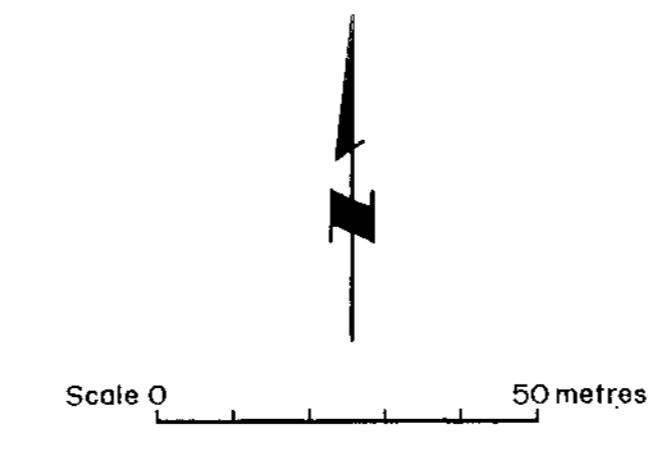
17,872

Part 2 of 2

MAPPED BY	CHEVRON MINERALS LTD.			
A. Halloran	OMINECA M.D., B.C.			
	URSA PROPERTY			
	LAURA MAIN GRID			
	GEOLOGY			
	NORTHWEST GEOLOGICAL CONSULTING LTD.			
DRAWN BY	SCALE	DATE	NTS	DWG NO
dip	1:1000		93N/9E	3



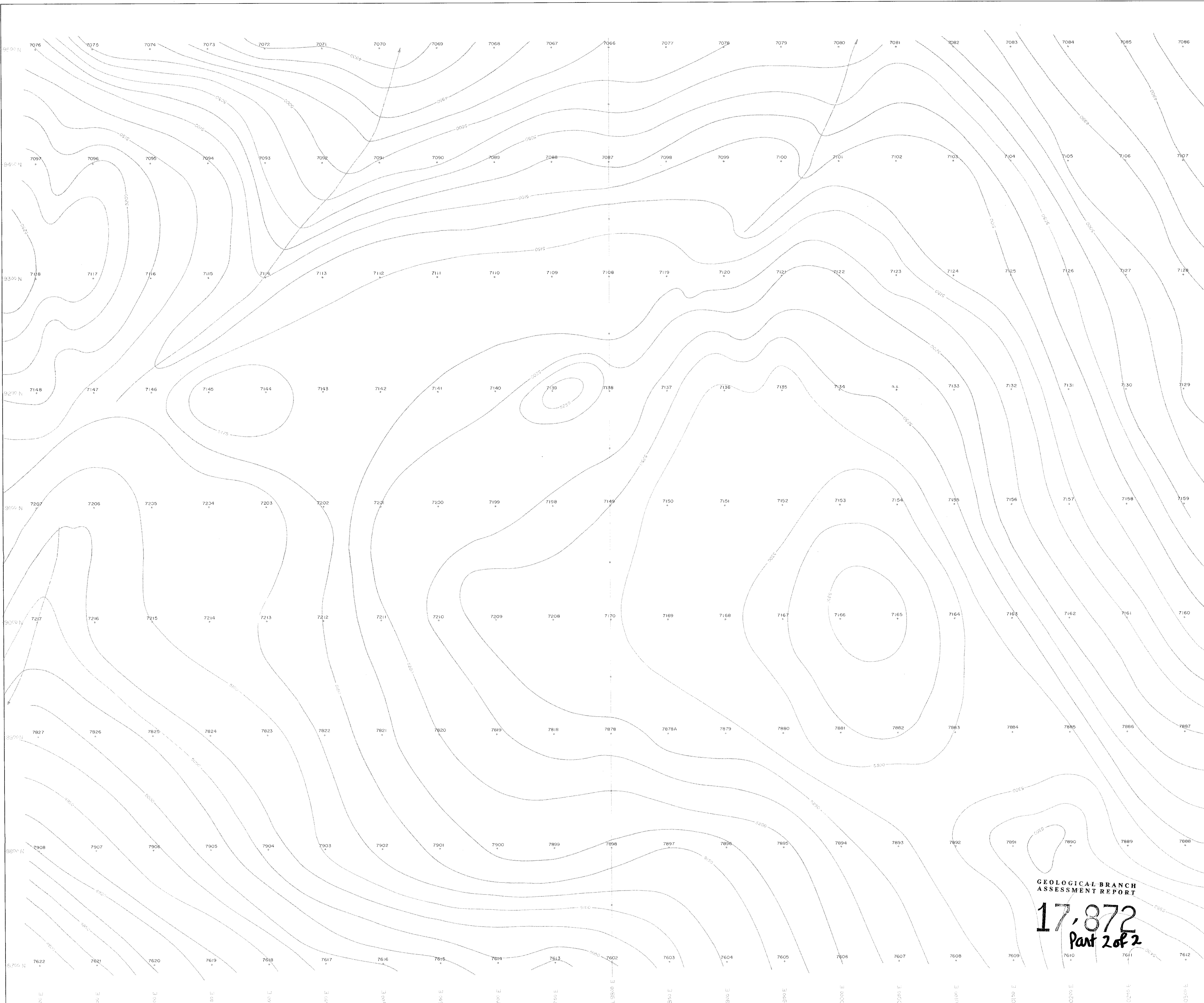
GEOLOGICAL BRANCH  
ASSESSMENT REPORT  
**17,872**  
Part 2 of 2



• Elevation, feet above sea level  
— 5000 Elevation contour, interval 25 feet  
— Creek, showing flow direction

MAPPED BY	CHEVRON MINERALS LTD.			
	OMINECA M.D., B.C.			
	URSA PROPERTY			
	LAURA GRID			
	ELEVATION SURVEY			
	NORTHWEST GEOLOGICAL CONSULTING LTD.			
DRAWN BY	SCALE	DATE	NTS	DWG NO
dtp	1:1000	AUG 1/88	93N/9E	3A

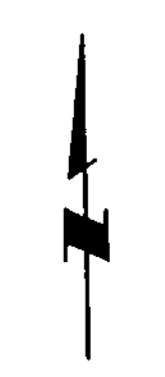
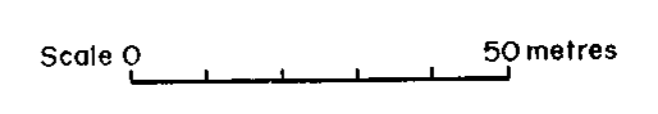




GEOLOGICAL BRANCH  
ASSESSMENT REPORT  
**17,872**  
Part 2 of 2

LEGEND

- 7215 Sample location and number
- n.s. No sample



MAPPED BY				CHEVRON MINERALS LTD.			
				OMINECA M.D., B.C.			
				URSA PROPERTY			
				LAURA GRID			
				Sample Location			
				NORTHWEST GEOLOGICAL CONSULTING LTD.			
DRAWN BY	SCALE	DATE	NTS	DWG NO.			
	1:1000	AUG 1/88	93N/9E	3B			



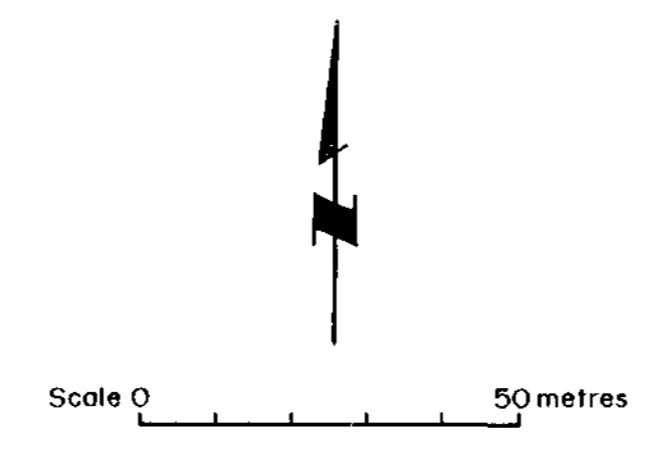


GEOLOGICAL BRANCH  
ASSESSMENT REPORT

**17-872**

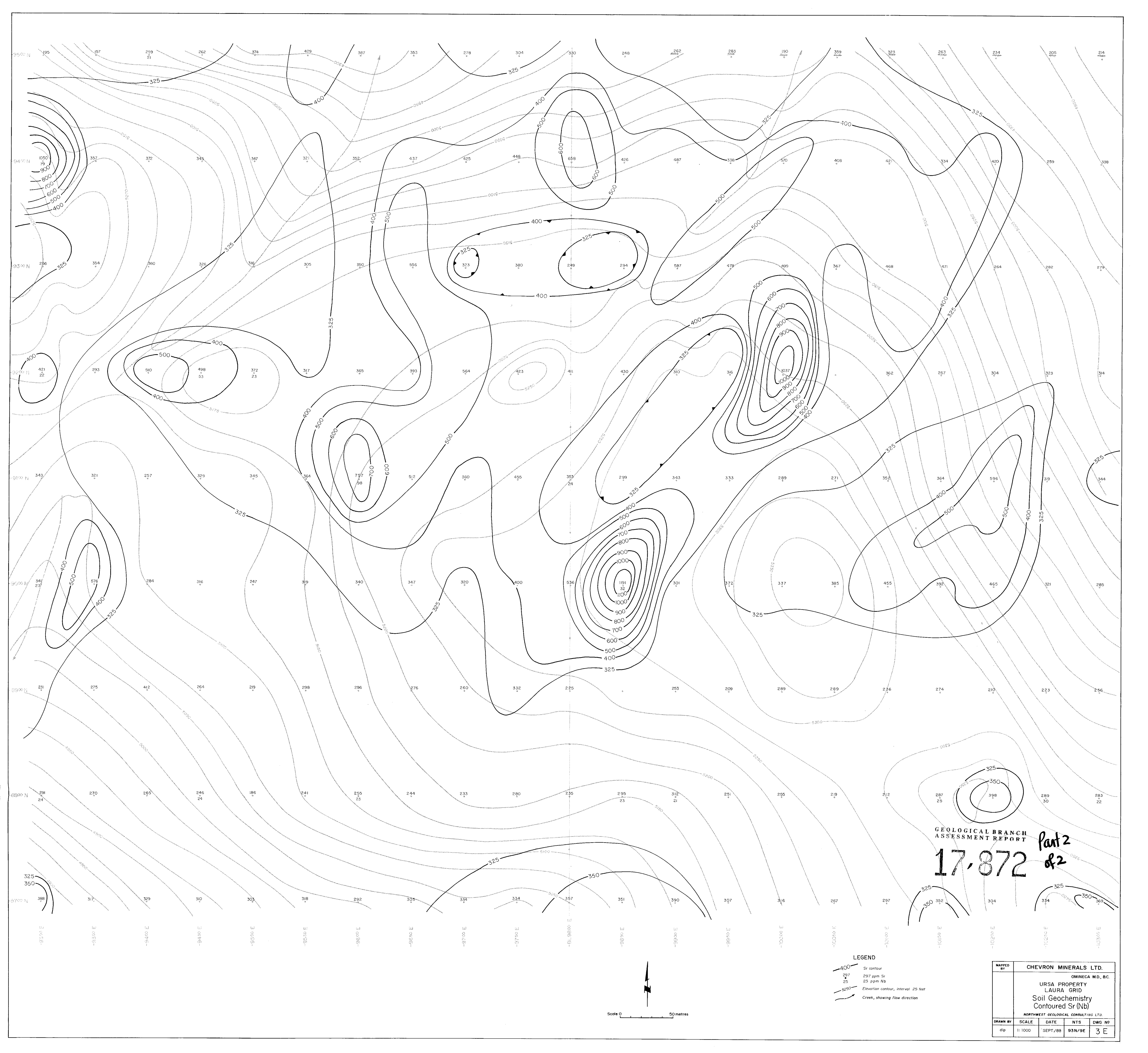
Part 2 of 2

- LEGEND
- Ce contour
  - 100 ppm Ce
  - Elevation contour, interval 25 feet
  - Creek, showing flow direction



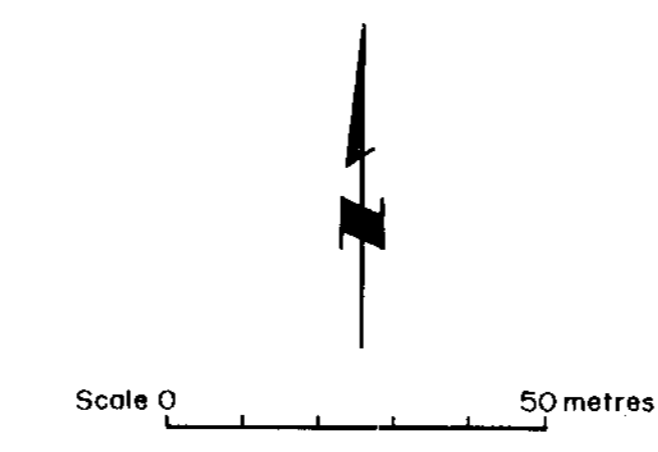
MAPPED BY	CHEVRON MINERALS LTD.			
	OMINECA M.D. B.C.			
	URSA PROPERTY LAURA GRID			
	Soil Geochemistry Contoured Ce			
	NORTHWEST GEOLOGICAL CONSULTING LTD.			
DRAWN BY	SCALE	DATE	NTS	DWG NO
dip	1:1000		93N/9E	3 D





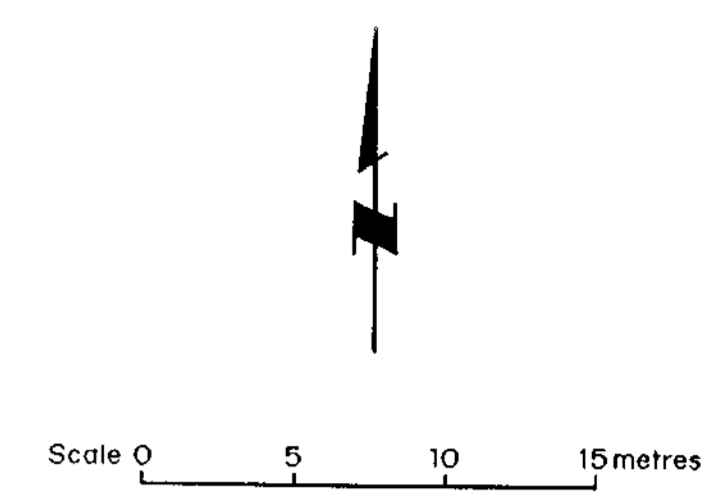
GEOLOGICAL BRANCH  
ASSESSMENT REPORT  
**17,872** Part 2 of 2

- LEGEND**
- 400 Sr contour
  - 297 297 ppm Sr
  - 25 25 ppm Nb
  - 500 Elevation contour, interval 20 feet
  - Creek, showing flow direction



MAPPED BY	CHEVRON MINERALS LTD.			
	OMINECA M.D., B.C.			
DRAWN BY	URSA PROPERTY LAURA GRID Soil Geochemistry Contoured Sr (Nb)			
	NORTHWEST GEOLOGICAL CONSULTING LTD.			
SCALE	DATE	NTS	DWG NO	
dip 1:1000	SEPT/88	93N/9E	3 E	





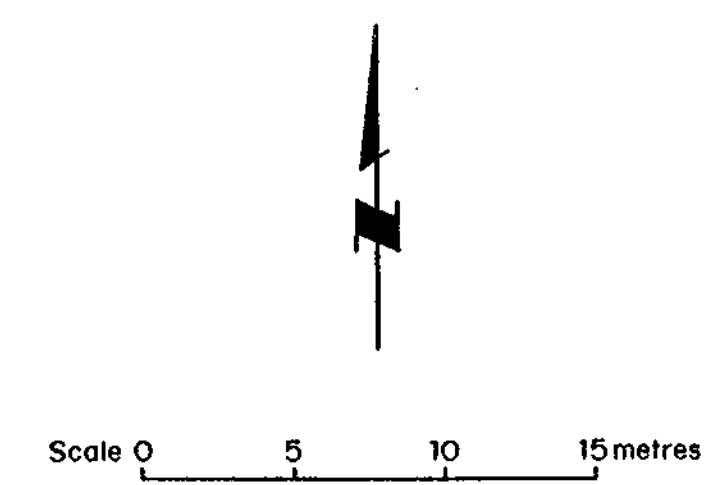
- LEGEND
- Hosted by Proterozoic Wolverine Complex
- QMP Quartz monzonite pegmatite
  - AMP Allanite-monzonite pegmatite
  - QFP Quartz feldspar pegmatite
  - MP Magnetite bearing pegmatite
  - NSP Nepheline syenite pegmatite
  - ee Alkalic alteration to banded aegirine - augite alkali - feldspar syenite
  - BS, BAS Biotite schist, biotite amphibole schist
  - + + + Monzonite
  - AA Aegirine-augite monzodiorite

- SYMBOLS
- 500 \* Scintillometer high
  - UG-7846, UG-7629(c) Rock sample, chip sample
  - x UG-7827 Soil sample
  - All Allanite
  - Mon Monazite
  - Mag Magnetite
  - Geological boundary: defined, inferred
  - + + + Bedding: vertical, inclined
  - + + + Foliation: vertical, inclined
  - Outcrop
  - Talus
  - - - Limit of alkalic alteration

GEOLOGICAL BRANCH  
ASSESSMENT REPORT

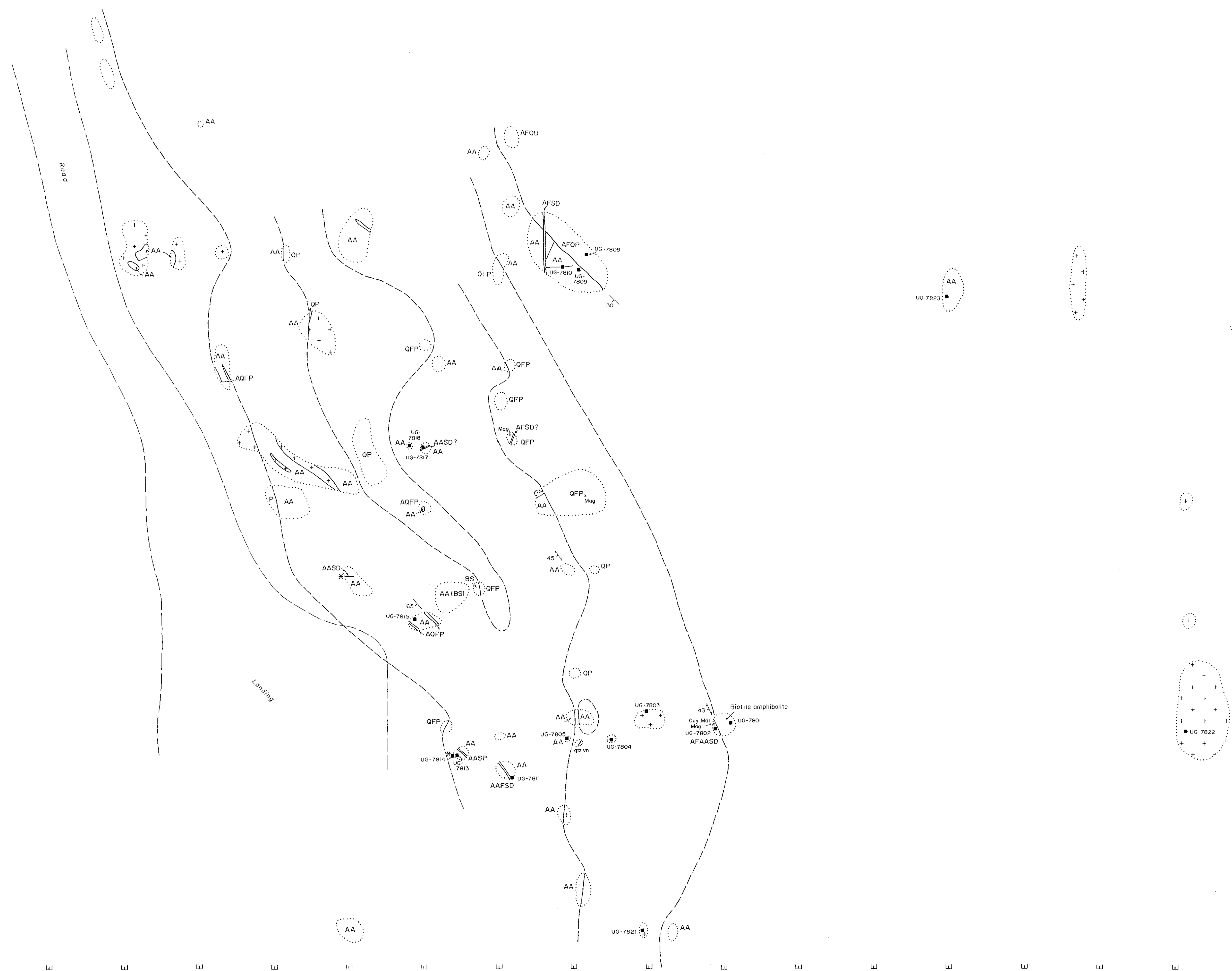
**17,872** part 2  
of 2

MAPPED BY	CHEVRON MINERALS LTD.			
A. Halleran	OMINECA M.D., B.C.			
	URSA PROPERTY			
	LAURA GRID			
	GEOLOGY			
	NORTHWEST GEOLOGICAL CONSULTING LTD.			
DRAWN BY	SCALE	DATE	NTS	DWG NO
dip	1:250	AUG 1/88	93N/9E	4



15380 N  
15370 N  
15360 N  
15350 N  
15340 N  
15330 N  
15320 N  
15310 N  
15300 N  
15290 N  
15280 N  
15270 N

-5200 E -5210 E -5220 E -5230 E -5240 E -5250 E -5260 E -5270 E -5280 E -5290 E -5300 E -5310 E -5320 E -5330 E -5340 E -5350 E -5360 E



LEGEND

Hosted by Proterozoic Wolverine Complex

- P Pegmatite
- QFP Quartz-feldspar pegmatite
- QP Quartz pegmatite
- AFQP Aegirine-feldspar-quartz pegmatite
- AA Aegirine-augite monzodiorite
- AFSD Alkali-feldspar syenite dyke
- AASD Aegirine-augite syenite dyke
- AFAASD Alkali-feldspar aegirine-augite syenite dyke
- + + + Monzonite
- BS Biotite schist

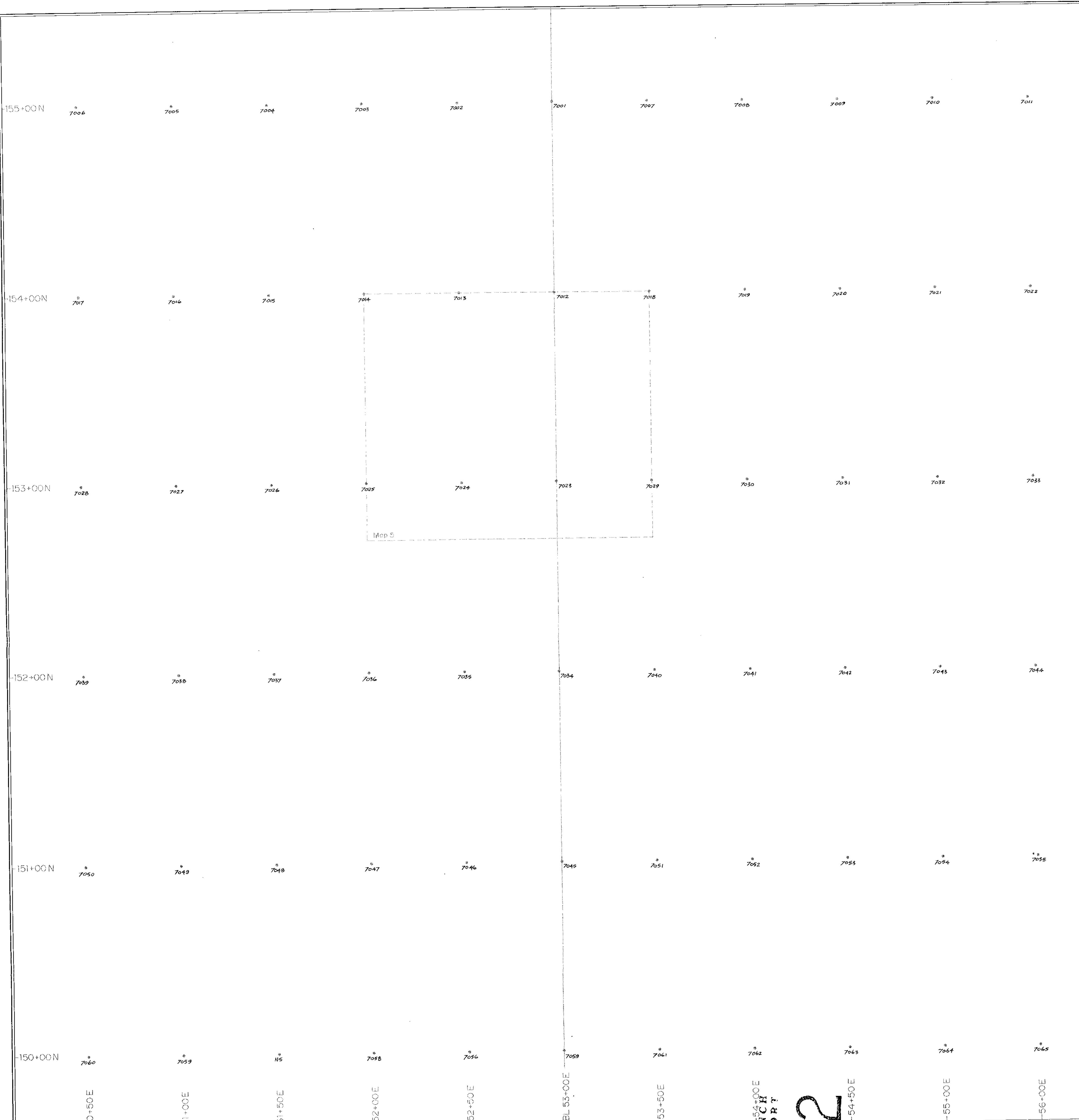
SYMBOLS

- Soil, rock sample site
- UG-7842 Sample number
- Cpy Chalcopyrite
- Mag Magnetite
- Mal Malachite
- \* Rare earth (hot)
- Geological boundary: defined, inferred
- ||| Bedding: vertical, inclined
- /// Foliation: vertical, inclined
- Dyke or vein: vertical, inclined
- Outcrop

GEOLOGICAL BRANCH  
ASSESSMENT REPORT

17,872 Part 2 of 2

MAPPED BY A. Halleran	CHEVRON MINERALS LTD. OMINECA M.D., B.C. URSA PROPERTY WILL #2 GRID GEOLOGY NORTHWEST GEOLOGICAL CONSULTING LTD.			
DRAWN BY dip	SCALE 1:250	DATE AUG 1/88	NTS 930/12W	DWG NO 5

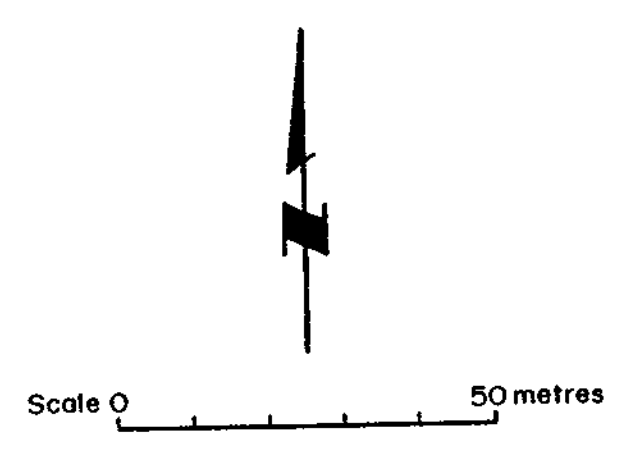


7062  
 Sample location and number  
 Detailed geology map location  
 No. No sample

GEOLOGICAL BRANCH  
 ASSESSMENT REPORT

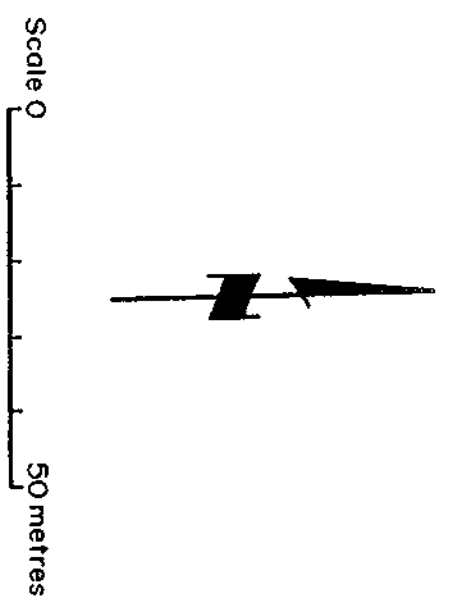
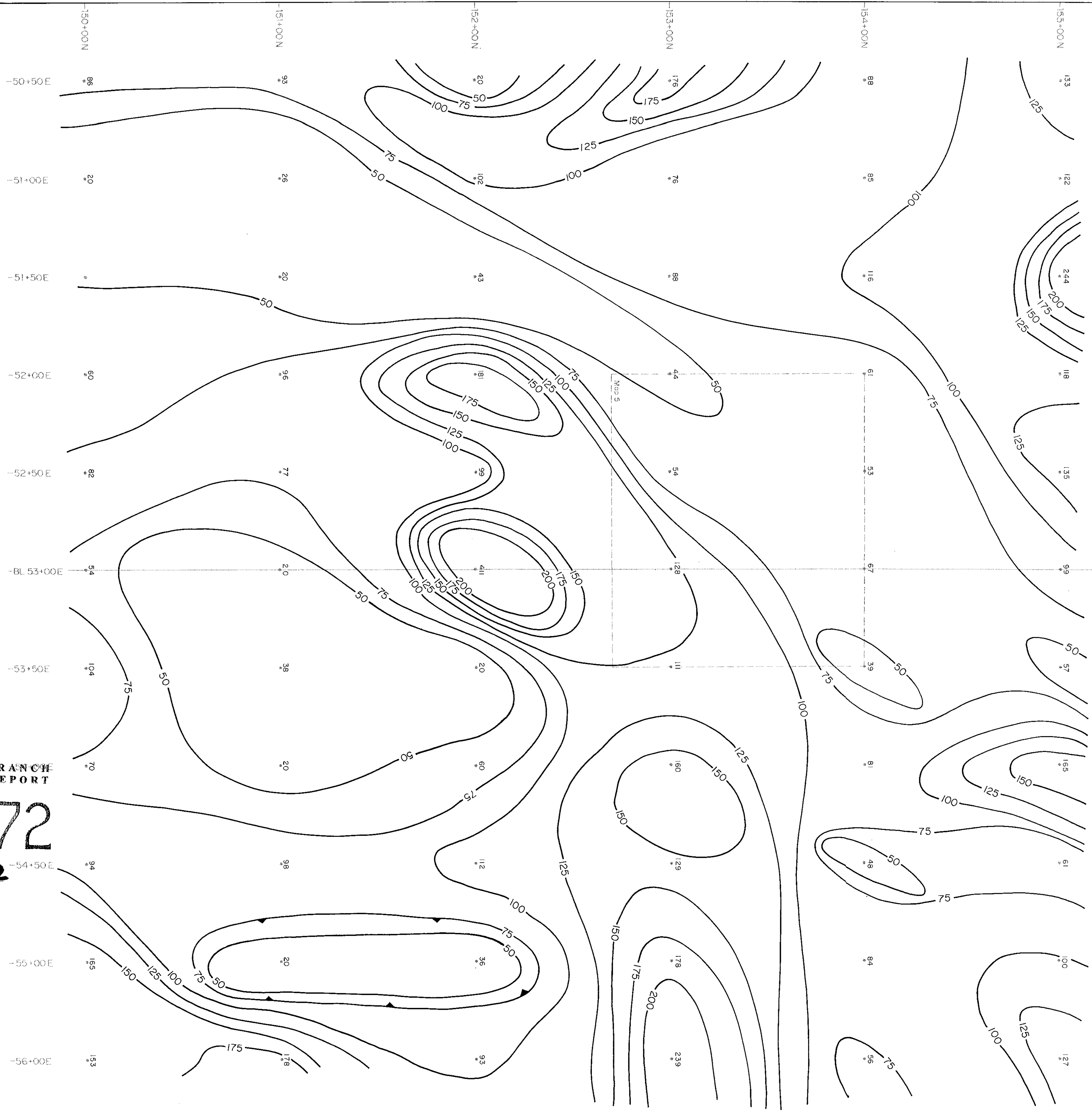
17,872

Part 2 of 2



MAPPED BY					CHEVRON MINERALS LTD.				
A. Halleran					OMINECA M.D., BC.				
					URSA PROPERTY				
					WILL #2 GRID				
					SAMPLE LOCATION				
					NORTHWEST GEOLOGICAL CONSULTING LTD.				
DRAWN BY	SCALE	DATE	NTS	DWG NO					
dlp	1:1000	AUG 1/88	930/12W	5B					





103  
 103 ppm Ce  
 Detailed geology map location  
 75 Ce contour

LEGEND

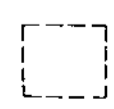
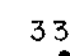
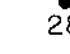
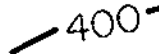
GEOLOGICAL BRANCH  
ASSESSMENT REPORT

**17,872**  
*Part 2 of 2*

MAPPED BY	CHEVRON MINERALS LTD.
DRAWN BY	OMINECA M.D., B.C.
SCALE	1:1000
DATE	SEPT./88
NTS	93N/9E
DWG NO	5C
NORTHWEST GEOLOGICAL CONSULTING LTD. URSA PROPERTY WILL #2 GRID Soil Geochemistry Contoured Ce	



LEGEND

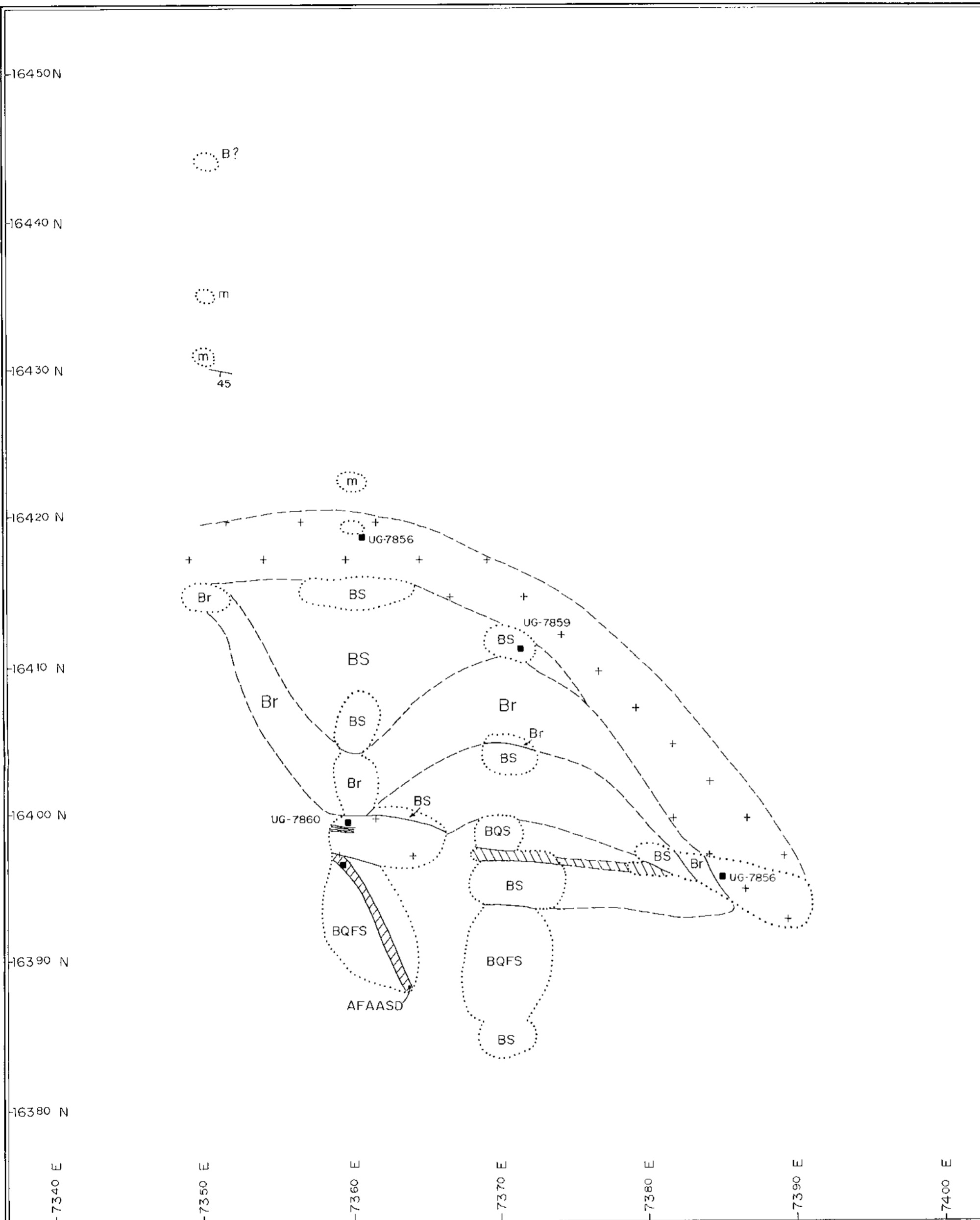
-  Detailed geology map location
-  337 337 ppm Sr
-  28 28 ppm Nb
-  400 Sr contour

GEOLOGICAL BRANCH  
ASSESSMENT REPORT

17.872

part 2 of 2

MAPPED BY	CHEVRON MINERALS LTD.				
	OMINECA M.D., B.C.				
	URSA PROPERTY WILL no. 2 GRID				
	Soil Geochemistry Contoured Sr (Nb)				
	<small>NORTHWEST GEOLOGICAL CONSULTING LTD.</small>				
DRAWN BY	SCALE	DATE	NTS	DWG N <sup>o</sup>	
	1:1000	SEPT./88	93N/9E	5D	



Scale 0 5 10 15 metres

LEGEND

PROTEROZOIC WOLVERINE COMPLEX

- m Metasediment
- BS Biotite schist
- BQS Biotite quartz schist
- BQFS Biotite quartz feldspar schist
- Br Breccia (metasomatized syenite?)
- AASD Aegirine-augite syenite dyke
- AFAASD Alkali-feldspar aegirine-augite syenite dyke
- + + Monzonite

SYMBOLS

- UG-7856 Rock sample
- Geological boundary: defined, inferred
- Bedding, inclined
- Limit of outcrop

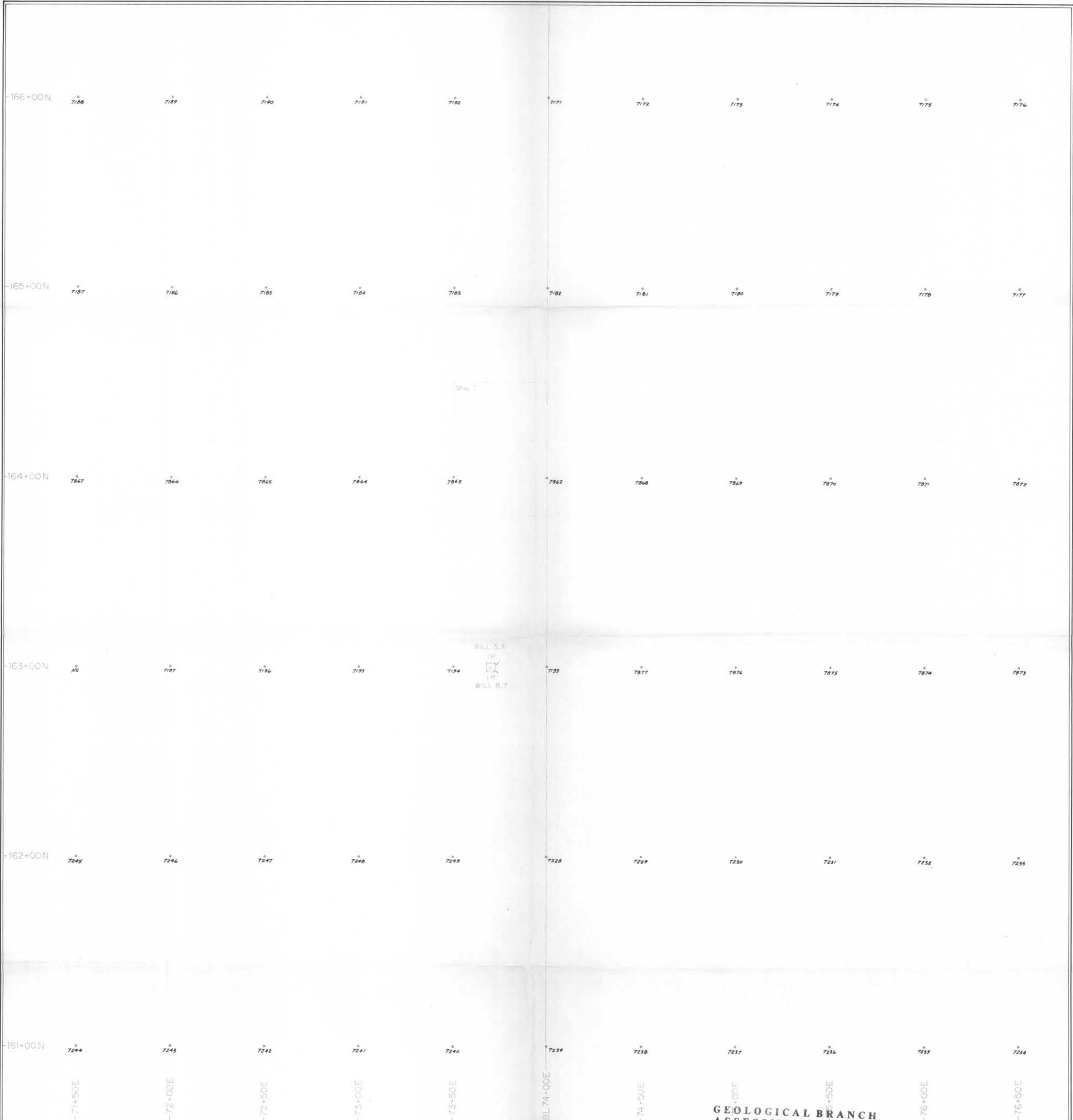
GEOLOGICAL BRANCH ASSESSMENT REPORT

17,872

Part 2 of 2

<b>MAPPED BY</b>	CHEVRON MINERALS LTD.			
<b>DRAWN BY</b>  A.Halleran	OMINECA M.D., B.C.			
	URSA PROPERTY			
	WILL #1 GRID			
	DETAILED GEOLOGY			
NORTHWEST GEOLOGICAL CONSULTING LTD.				
<b>DRAWN BY</b>	<b>SCALE</b>	<b>DATE</b>	<b>NTS</b>	<b>DWG N<sup>o</sup></b>
dlp	1:250	AUG 1/88	930/12W	7





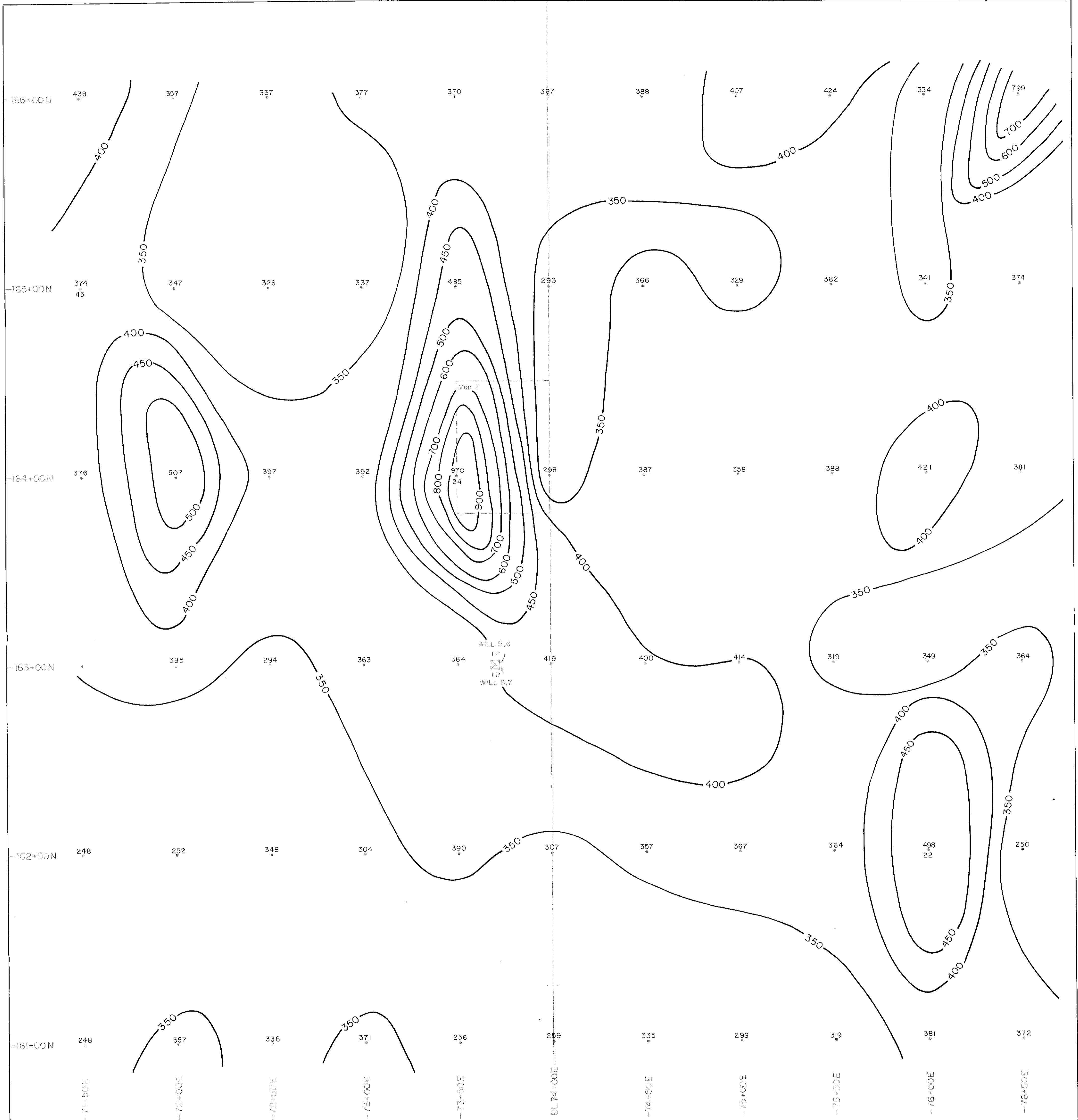
GEOLOGICAL BRANCH  
ASSESSMENT REPORT

17.872  
Part 2 of 2

- 7236 \* Sample location and number
- Detailed geology map location
- \* NS No sample

MAPPED BY A. Halloran					CHEVRON MINERALS LTD. OMINECA M.D., B.C.				
					URSA PROPERTY WILL #1 GRID SAMPLE LOCATION				
					NORTHWEST GEOLOGICAL CONSULTING LTD.				
DRAWN BY	SCALE	DATE	NTS	DWG NO					
dip	1:1000	AUG 1 / 88	930/12W	7A					





**LEGEND** **GEOLOGICAL BRANCH**  
**ASSESSMENT REPORT**

Detailed geology map location

337 337 ppm Sr  
28 28 ppm Nb

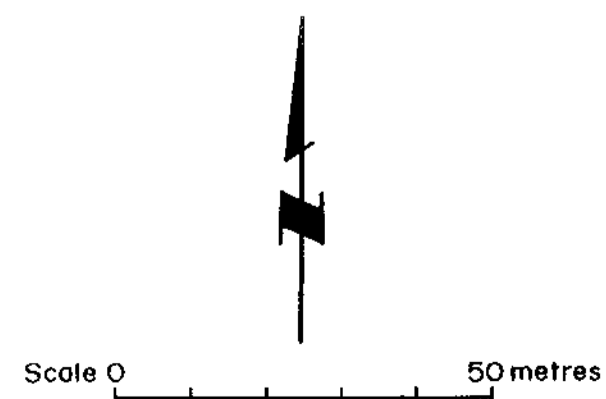
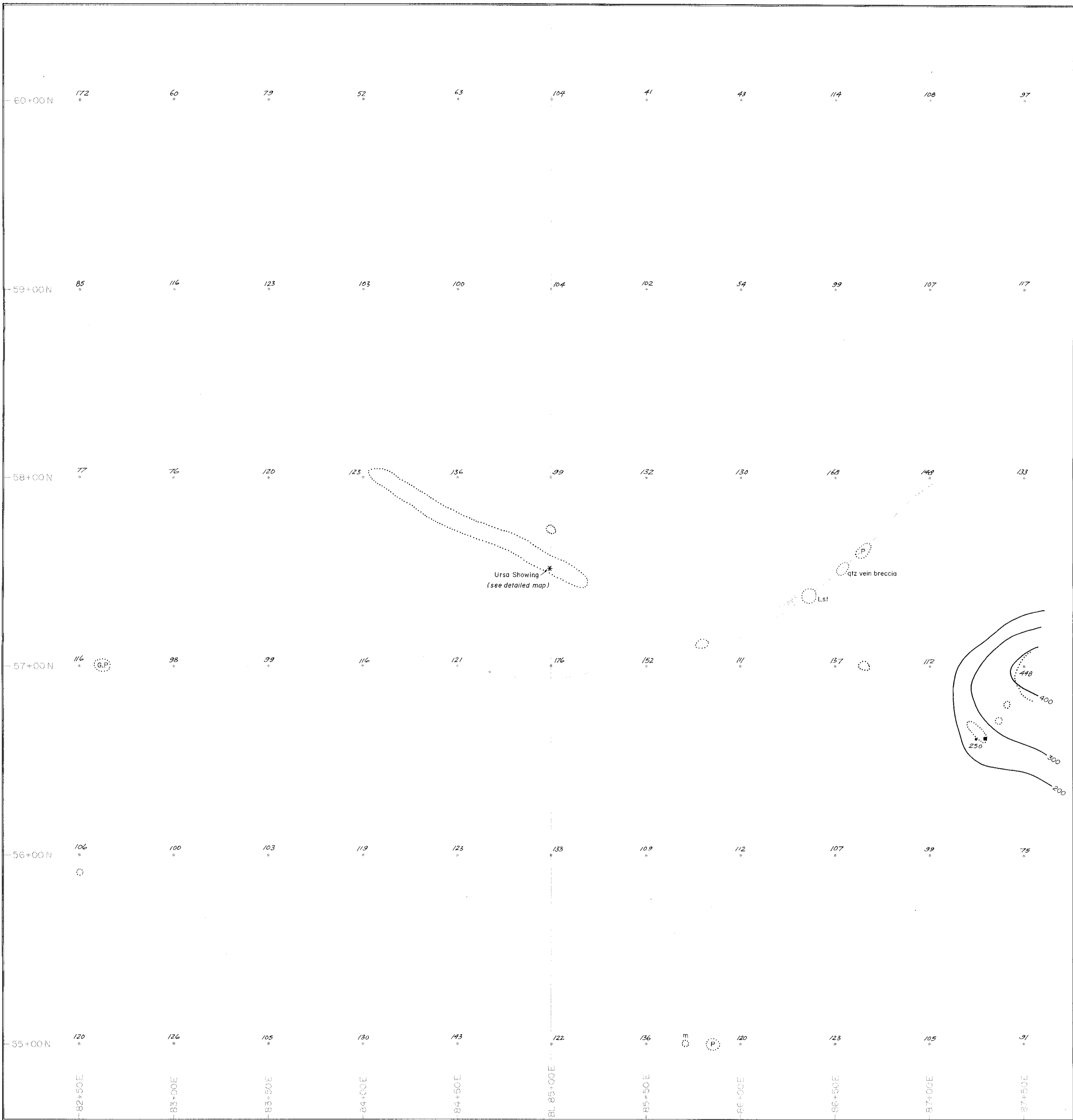
400 Sr contour

**17,872**

**Part 2 of 2**

MAPPED BY					CHEVRON MINERALS LTD.				
					OMINECA M.D., B.C.				
					URSA PROPERTY				
					WILL No. 1 GRID				
					Soil Geochemistry				
					Contoured Sr (Nb)				
					NORTHWEST GEOLOGICAL CONSULTING LTD.				
DRAWN BY	SCALE	DATE	NTS	DWG NO					
	1:1000	SEPT/88	93N/9E	7C					



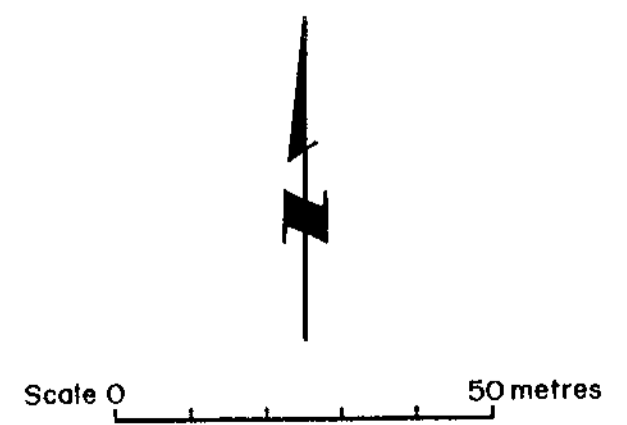
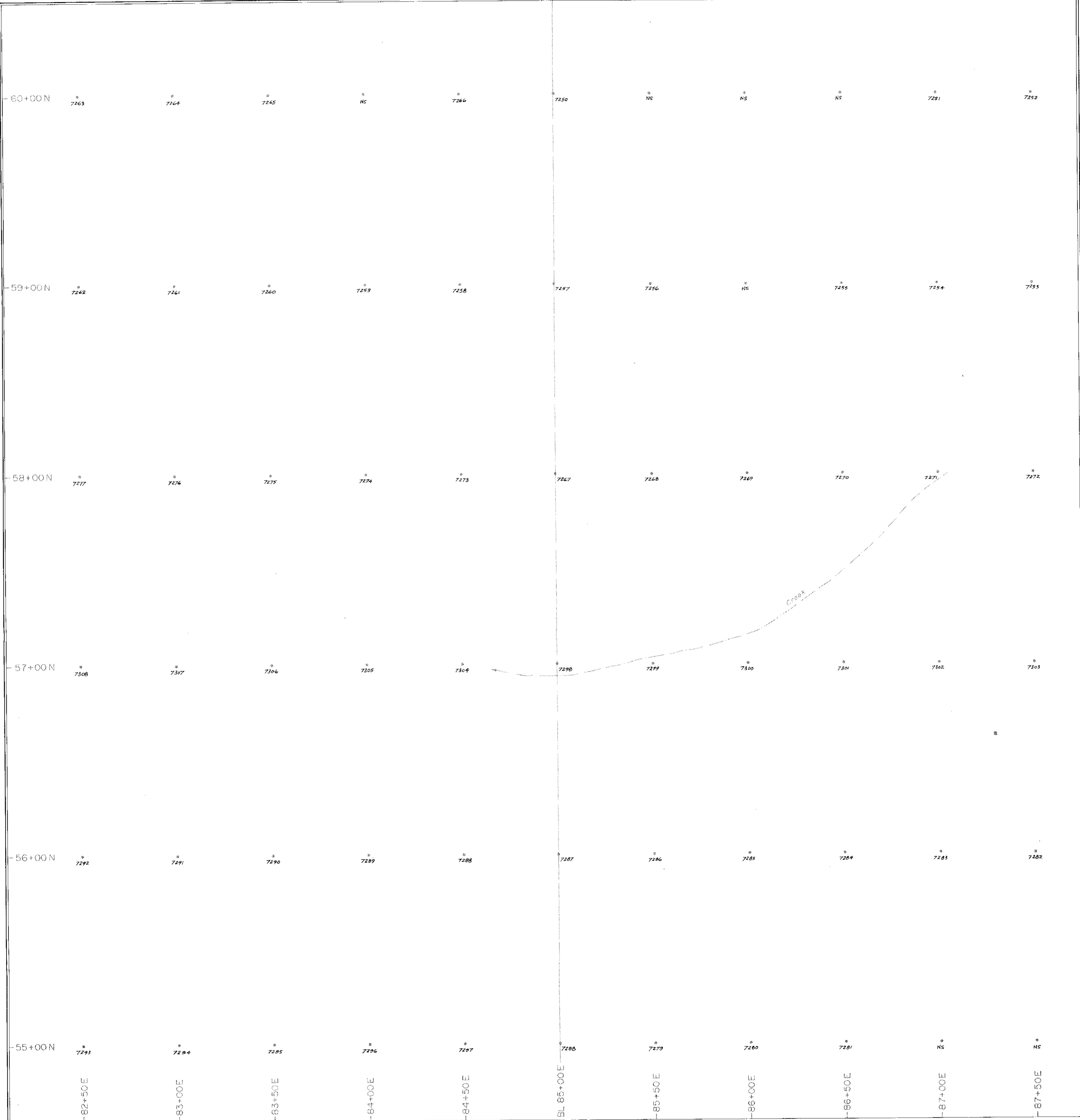


**GEOLOGICAL BRANCH  
ASSESSMENT REPORT**

17,872  
Part 2 of 2

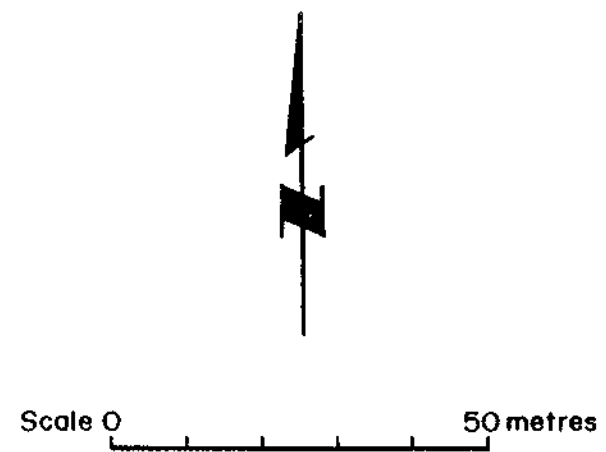
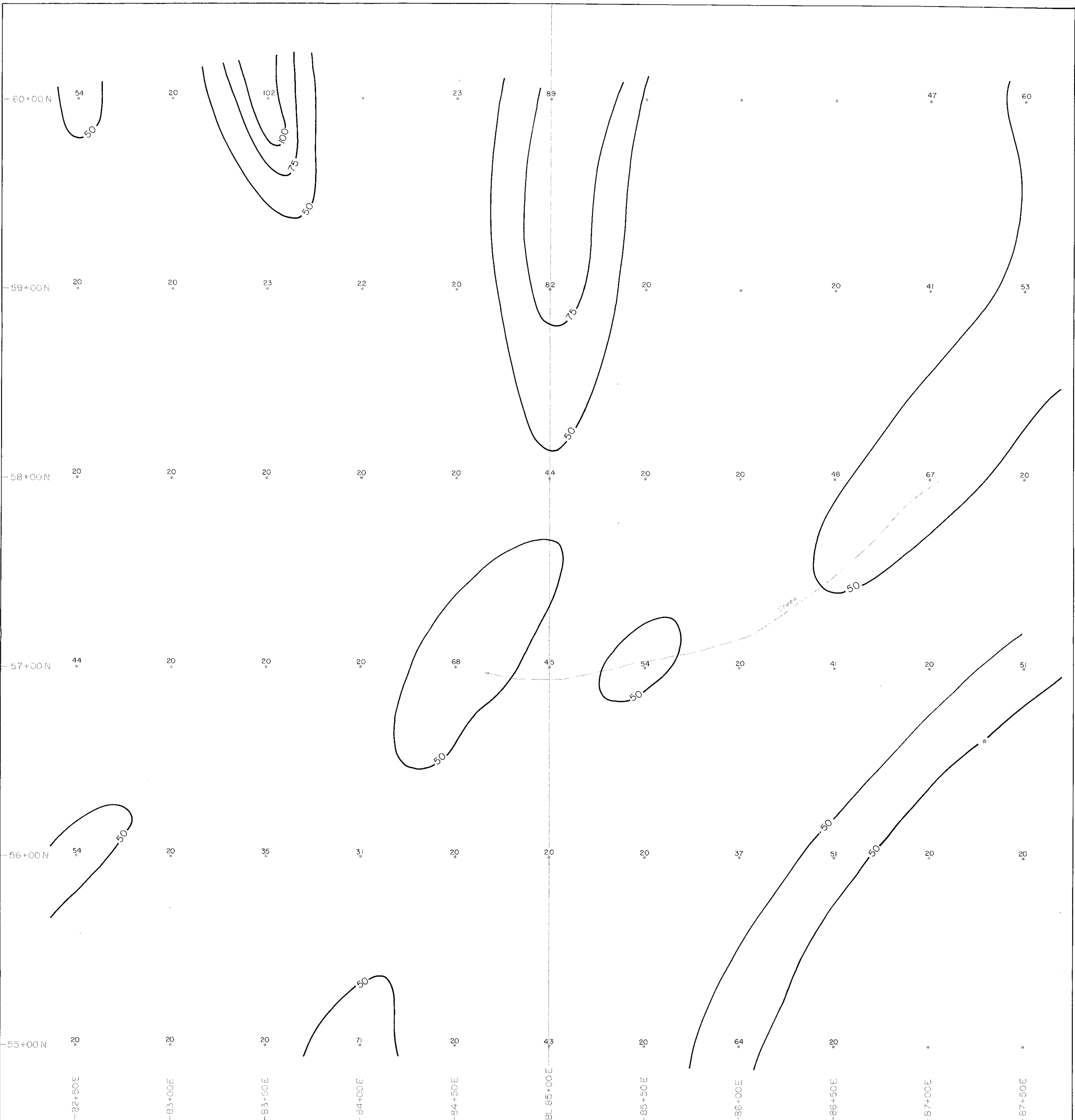
- Rock sample site
- 136 • Location of scintillometer reading
- m Metasediment
- P Pegmatite
- \* Scintillometer high
- Outcrop

MAPPED BY	CHEVRON MINERALS LTD.			
	OMINECA M.D., B.C.			
	URSA PROPERTY URSA GRID SCINTILLOMETER SURVEY AND GEOLOGY			
	NORTHWEST GEOLOGICAL CONSULTING LTD.			
DRAWN BY	SCALE	DATE	NTS	DWG N <sup>o</sup>
dlp	1:1000	AUG 1 / 88	93N/9E	8

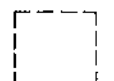

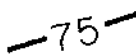


7267  
 \*  
 Soil sample location  
 NS  
 \*  
 No sample  
**17-872**  
*Part 2 of 2*

MAPPED BY	CHEVRON MINERALS LTD.			
	OMINECA M.D., B.C.			
	URSA PROPERTY			
	URSA GRID			
	SAMPLE LOCATION			
	NORTHWEST GEOLOGICAL CONSULTING LTD.			
DRAWN BY	SCALE	DATE	NTS	DWG NO
dip	1:1000	AUG 1/88	93N/9E	8A



LEGEND

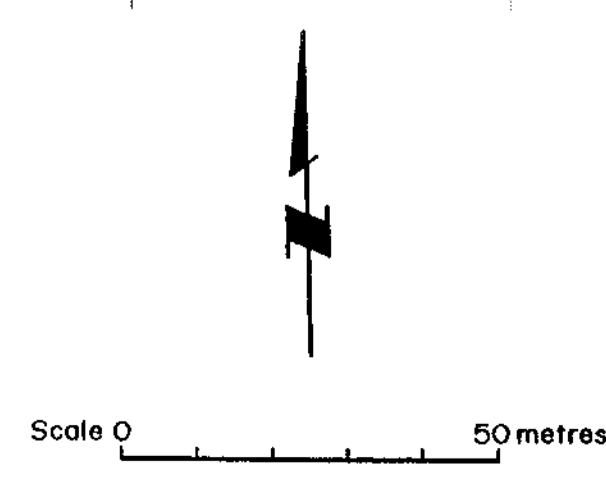
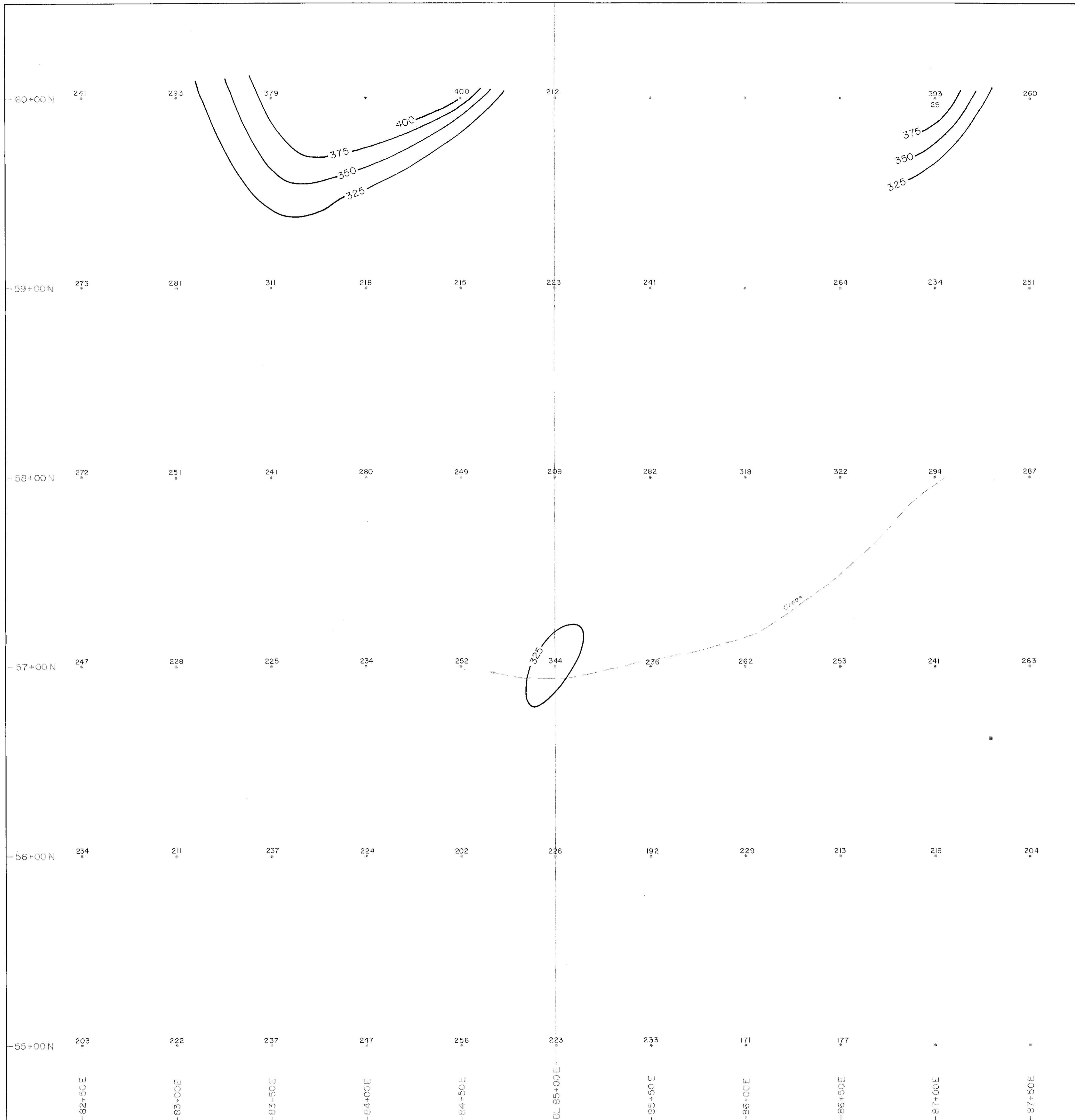
-  Detailed geology map location
-  103 ppm Ce
-  75 Ce contour

GEOLOGICAL BRANCH  
ASSESSMENT REPORT

17.872  
Part 2 of 2

DRAWN BY		SCALE	DATE	NTS	DWG NO
		1:1000	SEPT./88	93N/9E	8B

CHEVRON MINERALS LTD.  
OMINECA M.D., B.C.  
URSA PROPERTY  
URSA GRID  
Soil Geochemistry  
Contoured Ce  
NORTHWEST GEOLOGICAL CONSULTING LTD.



**LEGEND**

□ Detailed geology map location

3.37 337 ppm Sr  
28 28 ppm Nb

—400— Sr contour

**GEOLOGICAL BRANCH**  
**ASSESSMENT REPORT**

**17-872**  
**Part 2 of 2**

<b>CHEVRON MINERALS LTD.</b>			
OMINECA M.D., B.C.			
URSA PROPERTY URSA GRID Soil Geochemistry Contoured Sr (Nb)			
NORTHWEST GEOLOGICAL CONSULTING LTD.			
DRAWN BY	SCALE	DATE	NTS
	1:1000	SEPT./88	93N/9E
			DWG NO
			8C