

CONTENTS

	<u>Page</u>
TITLE PAGE AND SUMMARY	1 & 2
A. INTRODUCTION	2
B. LOCATION	2
C. PROPERTY	2
D. PHYSIOGRAPHY	2
E. GEOLOGY	3
F. PREVIOUS WORK	3
G. THEORY	4
H. OBJECT OF THE DRILLING	4
I. CYCLONE ROTARY AIR-MUD DRILLING	4
J. DRILLING RESULTS	5
K. DISCUSSION	5
L. SUMMARY	5
REFERENCES	
COST STATEMENTS	
CERTIFICATE	
MAPS:	
1. Location	
2. Topography, Claims, Hole, E4-E-1-88	
3. Elderberry #4 Claim, Hole E4-E1-88	

FILED

GEOLOGICAL BRANCH
ASSESSMENT REPORT

17,934

LOG NO: 1103	RD.
ACTION:	
FILE NO:	

SUB-RECORDER RECEIVED
OCT 20 1988
M.R. # S.....
VANCOUVER, B.C.

A. INTRODUCTION

Hole E-4 E-1 was drilled in the central area of the Elderberry #4 claim to a depth of 54.8 metres June 22, 1988.

Cyclone rotary air-mud equipment was used and the hole was drilled vertical.

The object of the drilling was to acquire bedrock information westerly from the Rimrock mineralized zone.

B. LOCATION

The Elderberry 4 claim is located 4 kilometers northwest of Elko.

Access to the drill site is via a secondary road 5 kilometers northwest from Elko.

C. PROPERTY

The Elderberry Group includes the Elderberry #3-1484 and #4 1485- expiratory dates July 24, 1989 and July 24, 1990.

D. PHYSIOGRAPHY

The property is located near the southern extremity of the Front Range of the Rocky Mountains.

The Elderberry #3 is located in rugged mountainous terrain from 1,220 metres to 2,290 metres above sea level.

The Elderberry #4 claim is located mostly in the Rocky Mountain Trench, about 900 metres elevation but extends easterly up to an elevation of 1,520 metres.

Drainage is by Callaghan and other south flowing creeks to the Elk River.



PROPERTY
LOCATION

R.H. STANFIELD

LOCATION MAP

SCALE: 1" = 136 Mils.

Drawn by	Date	ALLEN GEOLOGICAL ENGINEERING LTD
Checked by	Org no.	
	OCT. / 87	
	1	

E. GEOLOGY

The Elderberry Group #4 claims are underlain by Upper Devonian Palliser and Alexo formations composed of massive grey limestone, thin bedded argillaceous limestone and sandstone.

This is overlain by the Mississippian Rundle group composed of grey limestone; the Banff formation composed of dark cherty limestone, grey limestone and limy siltstone; and the Exshaw formation of black shale and limestone.

The strata strike northerly and dip 20 to 30 degrees westerly.

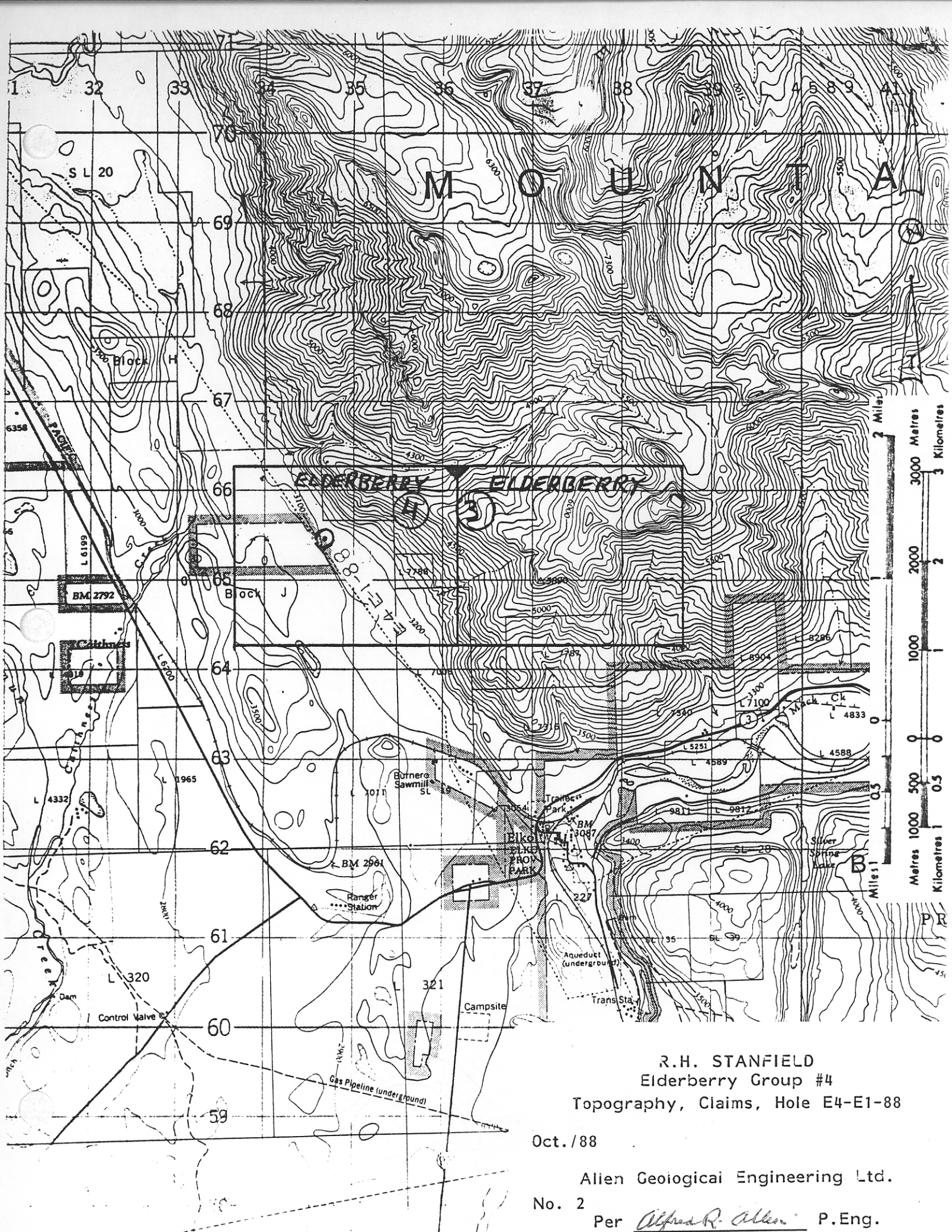
Major and minor faulting has resulted on the above formation being underlain by Middle Cambrian Jubilee and Elko formations of dolomite, and Burton shale, limestone, sandstone and conglomerate; Precambrian Roosville argillite and siltstone; and Gateway grey-green argillite, siltstone and buff-weathering dolomite.

The Rimrock mineral showings, on the Elderberry #4 claim are composed of quartz-siderite veins containing copper, silver and gold values. Workings include 2 short adits and surface trenching. The host rock appears to be Gateway formation.

F. PREVIOUS WORK

The geology of the area was mapped by G.B. Leech of the G.S.C. and published in Paper 58-10.

Two percussion holes were drilled on the northwest corner of the Elderberry #4 claim in 1987. One was completed at 19.2 metres depth in overburden, but the other penetrated 18 metres of overburden and 38.6 metres of bedrock composed of light to dark grey banded argillite-formation undetermined.



R.H. STANFIELD
 Elderberry Group #4
 Topography, Claims, Hole E4-E1-88

Oct./88

Allen Geological Engineering Ltd.

No. 2

Per Alfred R. Allen P.Eng.

G. THEORY

Drillhole E4-E1 is located about 800 metres west of the Rimrock showings. The purpose of the drilling was to determine the bedrock formation and correlate it with Rimrock geology. The hole was abandoned in overburden at a dept of 54.8 metres because of drilling difficulties and no bedrock information was acquired.

H. OBJECT OF THE DRILLING

The drilling was conducted to ascertain bedrock information west of the Rimrock mineral showings and if possible to correlate the formation with the cuttings obtained from the 1967 drill hole #2 located at the northwest corner of the Elderberry #4 claim.

I. CYCLONE ROTARY AIR-MUD DRILLING

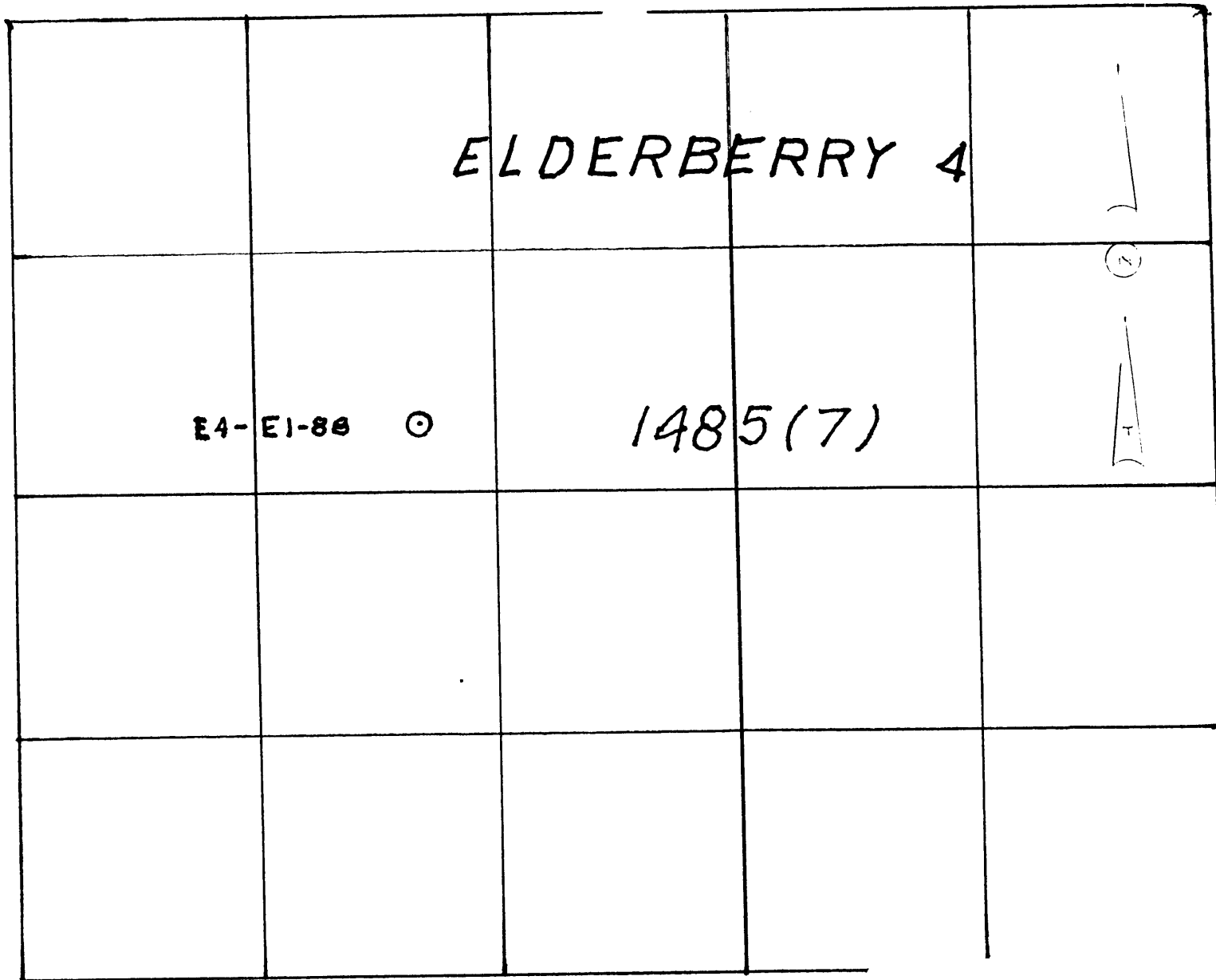
EQUIPMENT AND CREW

1 Ingersol Rand TH-60 rotary percussion rig with compressor and accessories.
 1 Drill stem trailer
 1 Five ton water truck
 1 Thirty-foot rod trailer and rods
 1 4 x 4 truck

Don Murray, driller, Strathmore, Alberta
 Lewis Waklem, driller, Strathmore, Alberta

Stanfield crew

Ross Stanfield Jr. Coordinator
 Brent Skene, Foreman
 2 3/4 ton 4 x 4 trucks



0 500 1000 1500

Scale - m

R.H. STANFIELD
Elderberry #4 Claim
Drillhole E4-E1-88

Oct./88

Allen Geological Engineering Ltd.

No. 3

Per Alfred R. Allina P.Eng.

J. DRILLING RESULTS

Drill hole E4-E1-88 was drilled vertically to a depth of 54.8 metres in overburden, but because of drilling difficulties, was abandoned without penetrating bedrock.

K. DISCUSSION

The drill hole provided no information regarding bedrock. Coarse and loose talus prevented deeper drilling.

L. SUMMARY

Vertical hole E-4-E1-88 was drilled closer to the Rimrock mineral showings than the 1987 holes. It was considered necessary to acquire additional bedrock information, if possible, because the cuttings from bedrock by hole PE2-84 could not be identified as to age or formation.

If additional drilling is considered, the holes may best be collared at a higher elevation adjacent to the Rimrock showings.

Respectfully submitted

Allen Geological Engineering Ltd.

per Alfred D. Allen P. Eng.

REFERENCES

- Leech G.B., Paper 58-10 Maje #20 1958
- Leech G.B., International Geological Congress
24th Session Canada 1972
Field Excursions
- Allen A.R. Allemint Exploration Co. Report 1967
- Allen A.R. Stanfield Holdings Report 1973
- Allen A.R. Geology, Ore Potential Stanfield Holdings 1976
- Chiang G.B. Placid Oil Company Reports 1973-1976

COSTS STATEMENT

Rotary Percussion Drilling E-4E-1-88, 54.8 m @ \$147,	\$8,055.60
Accommodation and board, 4 men, 1 day @ \$65	260.00
Trucks 2, 4 x 4 @ \$50/day 2 days	100.00
Foreman \$15/hr. 8 hrs.	120.00
Coordinator \$15/hr. 8 hrs.	120.00
Site preparation and clean-up	155.00
Mobilization and demobilization	1,000.00
Total drilling costs	<u>\$ 9,810.60</u>
A.R. Allen P.Eng Consulting	<u>520.00</u>
Total costs	\$10,330.60

Alfred R. Allen

702 - 2025 Bellevue Avenue
West Vancouver, B.C.
V7V 1B9

CERTIFICATE

I, Alfred R. Allen, certify that:

I am a graduate of the University of British Columbia and hold the following degrees therefrom:

BASc Geological Engineering 1939

MASc Geological Engineering 1941

I am a Life Member of the Association of Professional Engineers of the Province of British Columbia.

I have practised my profession for the past forty years.

I hold no interest in the properties or securities of R.H. Stanfield, or affiliates thereof, nor do I expect to receive any directly or indirectly.

The report on the Air Rotary Percussion drilling on the Elderberry #4 claim is based on examination of the area drilled August 4, 5, 6, 1987. Bedrock was not cored, and the drill site has not been re-examined by the Writer.

Alfred R. Allen P.Eng.
Alfred R. Allen

October 1986