

LOG NO: 1123	RD.
FILE NO:	

**REPORT ON
GEOCHEMICAL SAMPLING
OF THE
FURLONG AND TOUR CLAIMS
TOODOGGONE RIVER AREA, BRITISH COLUMBIA**

FILMED

Omineca Mining Division

Lat. 57°27'N Long. 127°14'W

NTS 94E/6W

Prepared by

Louise K. Eccles

**OWNED BY
ENERGEX MINERALS LTD.**

SUBMITTED
OCT 1988
M.R. #
VANCOUVER, B.C.

**WORK BY:
ENERGEX MINERALS LTD.**

**GEOLOGICAL BRANCH
ASSESSMENT REPORT**

17,939

October 1988

Vancouver, British Columbia

TABLE OF CONTENTS

	<u>PAGE</u>
INTRODUCTION	1
LOCATION AND ACCESS	1
PHYSIOGRAPHY, VEGETATION AND CLIMATE	1
PREVIOUS WORK	1
PROPERTY	2
SOIL SAMPLING PROCEDURES	2
SAMPLING PROGRAM - DISCUSSION OF RESULTS	2
CONCLUSIONS AND RECOMMENDATIONS	3
CERTIFICATE	4
BIBLIOGRAPHY	5
 APPENDICES:	
APPENDIX I - COST STATEMENT	6
APPENDIX 2 - SOIL AND ROCK GEOCHEMICAL RESULTS	8
APPENDIX 3 - SOIL AND ROCK GEOCHEMICAL RESULTS	40
 LIST OF FIGURES:	
FIGURE 1 - PROPERTY LOCATION	Following Page 1
FIGURE 2 - CLAIM LOCATION	Following Page 2
FIGURE 3A - SOIL SAMPLE LOCATIONS - Ag, Au RESULTS	Pocket
FIGURE 3B - SAMPLE LOCATIONS - Cu, Pb, Zn RESULTS	Pocket

INTRODUCTION

Energex Minerals conducted a soil geochemical grid survey on the Furlong and Tour claims in July 1988 as part of a major exploration program on their Toodoggone Properties and in order to fulfill assessment work requirements on those claims due in September.

Work done in 1988 consisted of establishing a grid which covered the Furlong and Tour claims west of Moosehorn Creek. A total of 853 soil samples were collected from the property during the month of July. This report describes the results of this soil sampling program.

LOCATION AND ACCESS

The Furlong and Tour claims are situated in the Toodoggone River area, approximately 300 kilometers north of Smithers at 57°27'N latitude, and 127°14'W longitude.

The sampled portions of the claims lie on the west side of Moosehorn Creek and straddle Antoine Louis Creek near its confluence with the Moosehorn. The area is served by the Sturdee Airstrip, which is located about 25 kilometers southeast of the claims. The Omineca Mine Access Road extension, privately owned by Cheni Gold Mines, Ltd., passes within ten kilometers of the claims.

Access to the property from Smithers is presently by fixed wing aircraft to the Sturdee Airstrip and by helicopter from there. The Claim Group straddles the proposed northern road extension from the Omineca Mine Access Road.

PHYSIOGRAPHY, VEGETATION AND CLIMATE

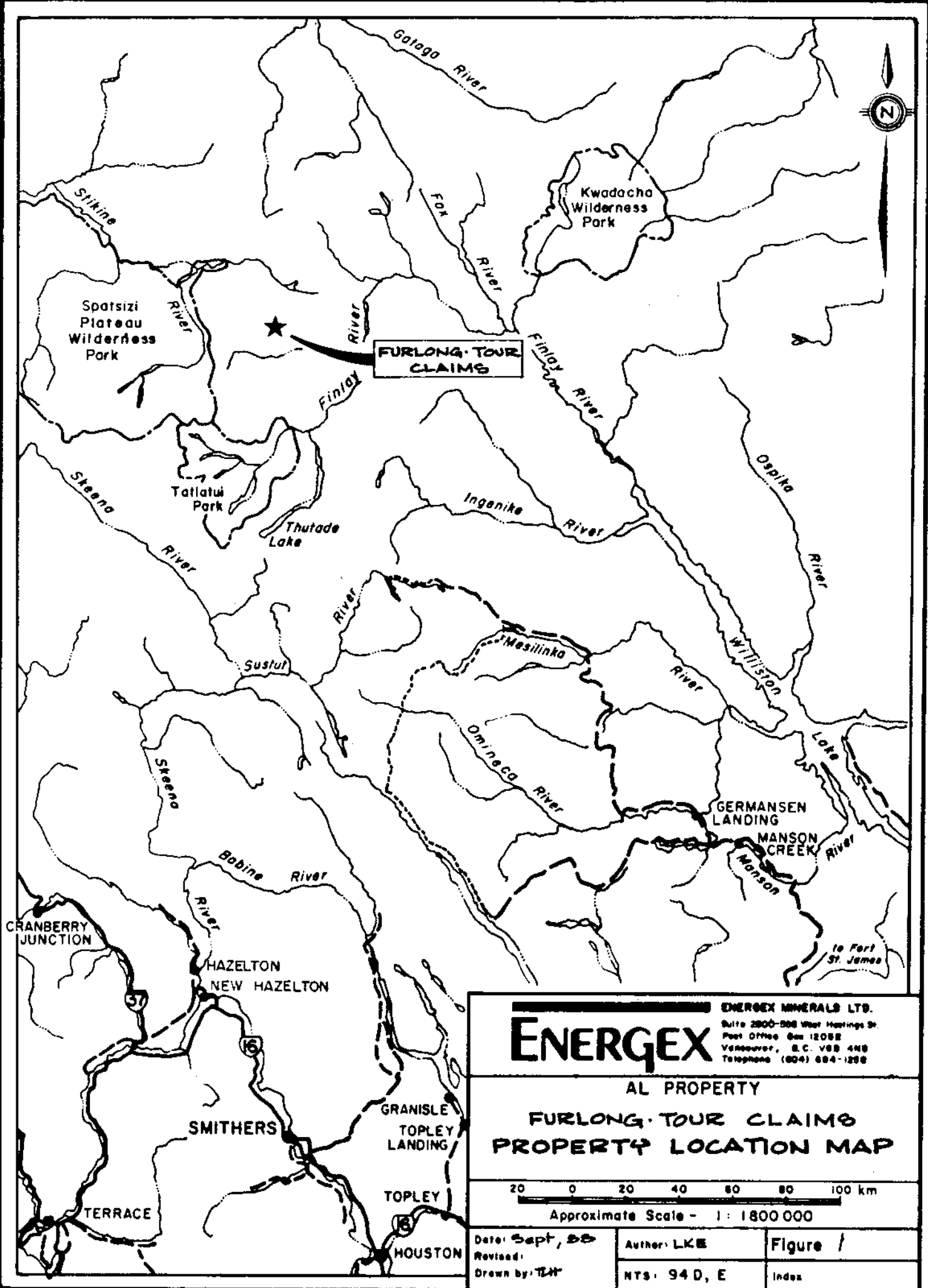
The Furlong and Tour claims cover the east facing treed slope on the west side of Moosehorn Creek. The southeastern corner of the Tour Claim lies on the east side of Moosehorn Creek. Elevations within the claims range between 1280m and 1500m and vegetation consists of black spruce and jack pine on the hillside and willows and grasses in the marshy areas along creek valley bottoms.

The area is snowbound from early October until early June. The short summer season is typically cool and showery with occasional snow showers.

PREVIOUS WORK

The Furlong and Tour claims are part of the AL Property which was extensively explored in the first half of the 1980's by Kidd Creek Mines Ltd. There is no record of work done covering the current grid on these claims. Very little outcrop was observed within the area of the claims and hence it is highly unlikely this ground was prospected by Kidd Creek.

In 1987, road engineers working for Energex surveyed a center line for a road through the middle of the two claims. Eventually, an access road to the Energex AL Property, from the Cheni Mine road, is planned for construction pending mine development plans.



FURLONG TOUR CLAIMS

ENERGEX MINERALS LTD.
 Suite 2900-598 West Hastings St.
 Post Office Box 12088
 Vancouver, B.C. V6B 4N8
 Telephone (604) 684-1208

AL PROPERTY
FURLONG TOUR CLAIMS
PROPERTY LOCATION MAP

20 0 20 40 60 80 100 km
 Approximate Scale - 1 : 1800 000

Date: Sept, 88
 Revised:
 Drawn by: JH

Author: LKE
 NTS: 94 D, E

Figure 1
 Index

PROPERTY

The Furlong and Tour claims are part of the Sturdee Claim Group which in turn are included as part of the AL Property. The modified grid mineral claims are wholly-owned by Energex Minerals Ltd. and are located in the Omineca Mining Division of British Columbia. Claim data are as follows: (see Figure 2)

CLAIM NAME	RECORD No.	NO. OF UNITS	RECORD DATE
Furlong	4274	6	September 8
Tour	4275	18	September 8

SOIL SAMPLING PROCEDURES

Soil samples were collected on a 100 m x 50 m grid whose baseline runs north/south along the common boundary between the Furlong and Tour claims. Lines spaced 100m apart were run east and westerly to cover each claim, as far as its western or easternmost boundaries or as far as Moosehorn Creek to the east, whichever the case was (refer to Figures 3A, 3B).

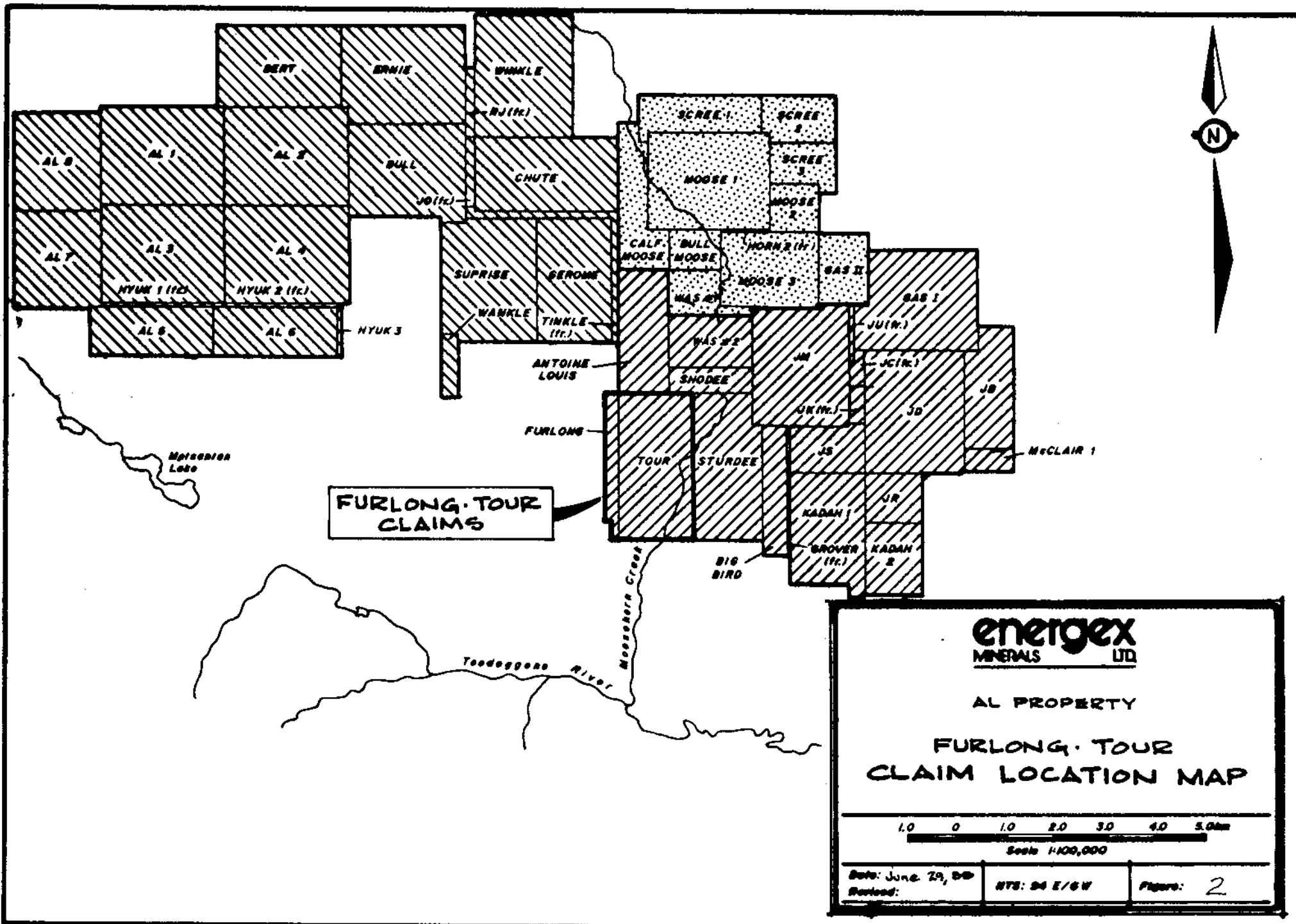
Soil samples were collected along the lines at 50 m intervals, from the B horizon (approximately 15 cm below surface) wherever possible. Occasionally in marshy areas samples were not collected due to deep organic cover. Soil samples were collected in gusseted Kraft paper bags which had the grid designation marked on them in black felt tipped marker.

The soil grid was established by compass and hip chain with samplers surveying the lines in conjunction with sampling. A total of 853 samples were collected and analyzed for Cu, Pb, Zn, Au, Ag. Min-En Laboratories, who have a prep lab in Smithers, analyzed most of the samples in their North Vancouver Laboratory. The last batch of samples from the southernmost portion of the grid were analyzed by CDN Resource Laboratories whose detection limits were higher than those of Min-En, however, results were comparable.

SAMPLING PROGRAM - DISCUSSION OF RESULTS

All geochemical values were consistently low except for two spot highs for gold located at grid coordinates L.15S/2+50E and L.18S/2+00W which were 50 ppb and 225 ppb respectively. Silver values ranged up to 5.6 ppm with the higher values for silver not being related to those for gold. Values for copper ranged up to a high of 83 ppm, those for lead up to 54 ppm and for zinc up to 177 ppm. As was the case for silver, the higher base metal values did not reflect the higher gold values.

Because of the randomness of the two spot-high, anomalous gold results, they are suspect. The two grid locations should be resampled and the areas should be prospected. Unless resampling and prospecting turns up encouraging results further geochemical sampling in this area is not recommended. For the most part the area is probably covered with deep alluvium and/or till and the few erratic results could be attributed to this.



CONCLUSIONS AND RECOMMENDATIONS

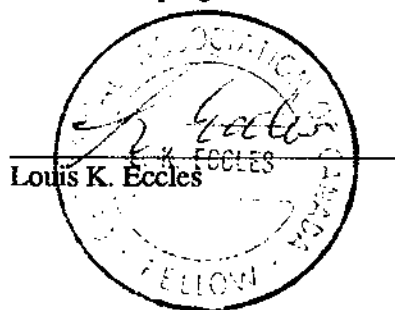
Results from the regional geochemical, grid survey completed on the Furlong and Tour claims are low overall except for several erratic gold values which themselves were only moderately anomalous.

Except for resampling and prospecting in the immediate areas of the anomalous samples (L.15S/2+50E and L.18S/2+00W) no further geochemical work is recommended for this area. It is suspected that deep deposits of glacial till or alluvium mask the underlying geology and make the area unsuitable for obtaining trustworthy geochemical results. Useful future work in this area would include ground geophysical surveys, specifically deep penetrating I.P.

CERTIFICATE

I, Louise Eccles, residing at Port Moody, British Columbia, do hereby declare that:

1. I am a geologist and have practised my profession for fourteen years.
2. I received a Bachelor of Science (Honors) degree in Geology from the University of British Columbia in 1976.
3. I am a Fellow of the Geological Association of Canada.
4. I have been an employee of Energex Minerals since February 1985.
5. I am the author of this report and supervised the described work program.



October, 1988
Vancouver, British Columbia

BIBLIOGRAPHY

- Awmack, H.J. (1987): Report on Geological Mapping of the Surprise Mineral Claim, Toodoggone River Area, British Columbia, Liard Mining Division; Assessment Report.
- Carter, N. (1972): Toodoggone River Area and Chappelle, Geology; Exploration and Mining in British Columbia 1971, p. 63-70.
- Diakow, L.J., Panteleyev, A. and Schroeter, T.G. (1985): Geology of the Toodoggone River Area, NTS 94E; British Columbia Ministry of Energy, Mines and Petroleum Resources, Preliminary Map 61.
- Eccles, L., Sivertz, G. and Price, B.J. (1985): 1985 Final Report, Toodoggone AL Project; private report for Energex Minerals Ltd.
- Sutherland, I.G. and Clark, J.R. (1982): Report on Geological Mapping and Geochemical Sampling on the AL Property; British Columbia Ministry of Energy, Mines and Petroleum Resources, Assessment Report 10226.
- Sutherland, I.G. (1982): Report on Geology, Geochemistry and Diamond Drilling on the Bull, Chute, Surprise and Gerome claims; British Columbia Ministry of Energy, Mines and Petroleum Resources, Assessment Report 10708.
- Sutherland, I.G. (1982): Report on Geology and Geochemistry of the AL claims; British Columbia Ministry of Energy, Mines and Petroleum Resources, Assessment Report 10709.
- Sutherland, I.G. (1982): Report on Geology, Geochemistry, Trenching and Diamond Drilling on the AL Property; British Columbia Ministry of Energy, Mines and Petroleum Resources, Assessment Report 11157.

APPENDIX 1
- COST STATEMENT -

COST STATEMENT - FURLONG AND TOUR CLAIMS

<u>PERSONNEL</u>	<u>DATES WORKED</u>	<u>DAILY RATE</u>	<u>TOTAL</u>
N. Caira (Geologist)	July 3/88	\$165	\$ 165.00
G. Dickson (Sampler)	July 3-10,18,19	70	700.00
L. Eccles (Geologist)	July 3	185	185.00
G. Fauchon (Sampler)	July 3-10, 18	75	675.00
E. Hofer (Rodman)	July 3	100	100.00
T. Hutchings (Geologist)	July 3	140	140.00
F. LeBaron (Sampler)	July 3-10, 18, 19	80	800.00
J. Stevens (Surveyor)	July 3	160	<u>160.00</u>
			\$ 2,925.00
 <u>CAMP COSTS</u>			
	Food and Lodging 34 man days @ \$100 per day		\$ 3,400.00
 <u>HELICOPTER</u>			
	NORTHERN MOUNTAIN Invoices July 3 - 10, 18, 19 (Apportioned) Total Number of Hours = 4.4 @ \$625/hour		\$ 2,750.00
 <u>LABORATORY</u>			
	MIN-EN LABORATORIES Invoices No.'s 81-89 (analyzed for Au, Cu, Pb, Zn, Ag) (Cdn Labs Invoice #88382) Total 853 samples @ \$12 each		\$10,236.00
 <u>FREIGHT COST</u>			
	Fixed wing to Smithers - approximated		\$ 100.00
 <u>REPORT PREPARATION</u>			
	L. Eccles 2 days	\$370	
	Drafting, Printing, Materials	<u>800</u>	<u>\$ 1,170.00</u>
		TOTAL	<u>\$20,581.00</u>

APPENDIX 2
- SOIL AND ROCK GEOCHEMICAL RESULTS -

**** Certificate of GEOCHEM ****

Company:ENERGEX MINERALS
Project:FURLONG/TOUR
Attention:LOUISE ECCLES

File:81-9/P1
Date:JULY 14/88
Type:SOIL GEOCHEM

We hereby certify the following results for samples submitted.

Sample Number	CU PPM	PB PPM	ZN PPM	AG PPM	AU-WET PPB
1+00S0+00E	18	19	74	.6	5
1+00S0+50E	9	23	29	.4	5
1+00S1+00E	13	17	47	.7	10
1+00S1+50E	21	20	66	.6	5
1+00S2+00E	24	22	61	.8	5
1+00S2+50E	19	21	82	.9	5
1+00S3+50E	62	54	109	1.8	5
1+00S4+00E	9	16	36	.8	5
1+00S4+50E	12	19	51	.7	5
1+00S5+00E	16	18	57	.9	5
1+00S5+50E	12	17	45	.8	5
1+00S6+00E	11	18	41	.6	5
1+00S6+50E	9	16	54	.9	5
1+00S7+00E	18	22	51	.8	5
1+00S7+50E	15	19	42	.7	5
1+00S8+00E	16	17	47	1.1	5
1+00S8+50E	14	18	42	.8	5
1+00S9+00E	38	24	86	1.7	5
1+00S9+50E	29	29	91	1.8	5
1+00S10+00E	21	26	79	1.4	10
1+00S10+50E	23	23	64	1.2	10
1+00S11+00E	MISSING				
1+00S11+50E	13	17	61	.9	5
1+00S12+00E	12	21	45	1.1	10
1+00S12+50E	11	24	52	.9	10
1+00S13+00E	24	26	104	1.6	5
1+00S13+50E	14	24	61	1.2	10
1+00S14+00E	25	34	111	1.1	5
1+00S14+50E	12	17	52	.7	5
1+00S15+00E	13	19	82	.8	5

Certified by *J. L. ...*
MIN-EN LABORATORIES LTD.

**** Certificate of GEOCHEM ****

Company:ENERGEX MINERALS
Project:FURLONG/TOUR
Attention:LOUISE ECCLES

File:81-9/P2
Date:JULY 14/88
Type:SOIL GEOCHEM

We hereby certify the following results for samples submitted.

Sample Number	CU PPM	PB PPM	ZN PPM	AG PPM	AU-WET PFB
+00S0+50W	13	19	68	0.9	5
+00S1+00W	9	17	29	0.5	5
1+00S1+50W	21	27	83	0.7	5
+00S2+00W	23	34	96	0.9	5
+00S2+50W	19	19	77	0.8	5
1+00S3+00W	18	26	96	1.0	5
2+00S0+00E	25	29	69	0.9	5
2+00S0+50E	22	24	64	0.8	5
2+00S1+00E	12	18	43	0.6	5
2+00S1+50E	23	29	67	0.9	5
2+00S2+00E	11	19	41	0.7	5
2+00S2+50E	17	22	57	0.8	5
2+00S3+00E	13	18	46	0.7	10
2+00S3+50E	21	24	59	0.9	5
2+00S4+00E	19	22	61	1.1	5
2+00S4+50E	16	24	55	0.7	5
2+00S5+00E	14	19	63	0.6	5
2+00S5+50E	17	18	48	0.8	5
2+00S6+00E	9	18	41	0.7	15
2+00S6+50E	7	17	51	0.6	5
2+00S7+00E	19	22	77	1.0	5
2+00S7+50E	12	18	46	0.7	5
2+00S8+00E	15	19	52	0.8	10
2+00S8+50E	16	18	49	0.7	5
2+00S9+00E	12	16	47	0.9	5
2+00S9+50E	37	33	102	1.3	5
2+00S10+00E	26	24	72	1.9	5
2+00S10+50E	23	21	83	1.4	5
2+00S11+00E	26	19	79	0.8	5
2+00S11+50E	13	17	49	0.7	5

Certified by J. L. ...
MIN-EN LABORATORIES LTD.

**** Certificate of Geochem ****

Company: ENERGETX MINERALS
 Project: FURLONG/TOUR
 Attention: LOUISE ECCLES

File: 81-9/P3
 Date: JULY 14/88
 Type: SOIL GEOCHEM

I hereby certify the following results for samples submitted.

Sample Number	CU PPM	PB PPM	ZN PPM	AG PPM	AU-WET PPB
2+00S12+00E	19	19	78	1.4	5
2+00S12+50E	NO SAMPLE				
2+00S13+00E	17	37	92	1.0	5
2+00S13+50E	8	24	59	0.9	5
2+00S14+00E	6	19	51	0.8	5
2+00S14+50E	5	17	39	0.7	5
2+00S15+00E	7	18	45	0.7	10
2+00S0+50W	28	19	69	1.3	5
2+00S1+00W	7	11	44	0.6	5
2+00S1+50W	8	13	37	0.4	5
2+00S2+00W	15	22	71	0.8	5
2+00S2+50W	17	21	92	0.7	5
2+00S3+00W	8	12	46	0.6	5
2+00S3+44WCL	8	14	53	0.5	10
3+00S0+00E	6	9	37	0.6	10
3+00S0+50E	13	17	62	0.8	5
3+00S1+00E	11	13	44	0.6	5
3+00S1+50E	23	24	109	0.9	5
3+00S2+00E	21	25	95	0.7	5
3+00S2+50E	26	29	97	1.0	5
3+00S3+00E	35	34	109	0.8	5
3+00S3+50E	23	27	69	0.7	5
3+00S4+00E	14	19	53	0.8	10
3+00S5+00E	29	34	96	1.0	5
3+00S5+50E	19	26	73	0.9	5
3+00S6+00E	16	24	68	1.3	5
3+00S6+50E	22	29	84	0.8	5
3+00S7+00E	15	19	52	0.9	5
3+00S7+50E	28	27	101	1.0	5
3+00S8+00E	11	23	57	0.7	5

Certified by J. L. L.
 MIN-EN LABORATORIES LTD.

**** Certificate of GEOCHEM ****

Company:ENERGEX MINERALS
Project:FURLONG/TOUR
Attention:L.ECCLES

File:81-9/P4
Date:JULY 15/88
Type:SOIL GEOCHEM

We hereby certify the following results for samples submitted.

Sample Number	CU PPM	PB PPM	ZN PPM	AG PPM	AU-WET PPB
+00S8+50E	17	18	63	0.8	5
3+00S9+00E	23	19	95	0.9	5
3+00S9+50E	MISSING				
+00S10+00E	21	18	88	0.9	5
+00S10+50E	19	22	89	0.8	5
3+00S11+00E	17	26	74	1.4	10
+00S11+50E	25	28	111	0.9	5
+00S12+00E	18	18	31	2.2	5
3+00S12+50E	12	23	57	0.7	5
3+00S13+00E	8	17	48	0.6	5
+00S13+50E	5	16	55	0.8	5
3+00S14+00E	9	19	56	0.9	5
3+00S14+50E	8	17	37	0.6	5
+00S15+00E	7	22	61	0.8	10
+00S0+50W	4	16	44	0.9	15
3+00S1+00W	29	28	76	1.1	5
+00S1+50W	11	26	45	0.6	5
+00S2+00W	8	18	39	0.8	5
3+00S2+50W	9	24	44	0.8	15
3+00S3+00W	6	19	45	0.7	5
+00S0+00E	5	17	36	0.6	5
+00S0+50E	6	16	47	0.7	5
4+00S1+00E	13	18	58	0.8	10
+00S1+50E	24	28	99	0.9	5
+00S2+00E	12	27	70	0.8	15
4+00S2+50E	9	18	56	0.7	5
+00S3+00E	22	28	81	1.0	5
+00S3+50E	13	21	66	0.8	10
4+00S4+50E	15	24	69	0.9	5
4+00S5+00E	12	25	54	0.8	5

Certified by J. L. ...
MIN-EN LABORATORIES LTD.

*** Certificate of Geochem ***

Company: ENERGETIC MINERALS
Project: FURLONG/TOUR
Attention: LOUISE ECCLES

File: 81-9/P5
Date: JULY 14/88
Type: SOIL GEOCHEM

I hereby certify the following results for samples submitted.

Sample Number	CU PPM	PB PPM	ZN PPM	AG PPM	AU-WET PPB
4+00S5+50E	12	19	49	0.8	5
4+00S6+00E	23	21	82	0.9	5
4+00S6+50E	13	16	53	0.8	5
4+00S7+00E	25	22	87	1.6	5
4+00S7+50E	6	12	35	0.7	5
4+00S8+00E	14	18	62	0.8	5
4+00S8+50E	23	17	97	1.3	5
4+00S9+00E	21	18	94	1.8	5
4+00S9+50E	17	11	77	1.2	5
4+00S10+00E	34	20	95	2.6	5
4+00S10+50E	29	12	92	1.3	5
4+00S12+00E	28	19	95	0.9	5
4+00S12+50E	11	10	49	0.7	10
4+00S13+00E	10	12	62	0.6	5
4+00S13+50E	11	14	57	0.7	5
4+00S14+00E	6	3	18	0.6	10
4+00S14+50E	12	16	59	0.8	5
4+00S0+50W	17	17	82	0.7	5
4+00S1+00W	29	24	104	1.5	5
4+00S1+50W	32	25	119	1.6	5
4+00S2+00W	31	18	124	1.9	5
4+00S2+50W	21	12	78	1.0	5
4+00S3+00W	18	14	121	1.1	5

Certified by J. L. H. T.
MIN-EN LABORATORIES LTD.

**** Certificate of GEOCHEM ****

Company: ENERGETX MINERALS
Project: FURLONG/TOUR
Attention: L.ECCLES

File: 81-12/P1
Date: JULY 24/88
Type: SOIL GEOCHEM

We hereby certify the following results for samples submitted.

Sample Number	AU-WET PFB	CU PPM	PB PPM	ZN PPM	AG PPM
L6+0S 0+00W	5	20	19	84	0.8
L6+0S 0+50W	5	20	15	61	0.6
L6+0S 1+00W	5	11	16	46	0.7
L6+0S 1+50W	5	21	21	81	0.8
L6+0S 2+00W	10	19	18	85	0.7
L6+0S 2+50W	5	12	17	44	0.8
L6+0S 3+00W	5	12	18	51	0.8
L6+0S 0+50E	5	15	16	62	0.9
L6+0S 1+00E	5	5	30	56	0.7
L6+0S 1+50E	5	18	26	72	0.9
L6+0S 2+00E	5	17	18	73	0.7
L6+0S 2+50E	5	5	16	56	0.6
L6+0S 3+00E	5	18	16	59	0.9
L6+0S 3+50E	10	14	26	61	0.7
L6+0S 4+00E	5	18	16	36	0.6
L6+0S 4+50E	5	5	27	50	0.9
L6+0S 5+00E	5	4	23	53	0.8
L6+0S 5+50E	5	6	44	80	1.1
L6+0S 6+00E	5	16	19	45	0.7
L6+0S 6+50E	10	12	19	50	0.9
L6+0S 7+00E	5	11	17	57	0.8
L6+0S 7+50E	5	10	37	89	1.9
L6+0S 8+00E	5	18	30	95	1.1
L6+0S 8+50E	5	18	37	138	0.9
L6+0S 9+00E	5	15	17	43	0.6
L6+0S 9+50E	10	21	21	50	0.7
L6+0S 10+00E	5	15	15	45	0.6
L6+0S 10+50E	5	18	24	50	0.8
L6+0S 11+00E	5	18	18	55	0.5
L6+0S 11+50E	5	8	15	45	0.7

Certified by

MIN-EN LABORATORIES LTD.

**** Certificate of Geochem ****

Company: ENERGETX MINERALS
 Project: FURLONG/TOUR
 Attention: L.ECCLES

File: 81-12/P2
 Date: JULY 24/88
 Type: SOIL GEOCHEM

We hereby certify the following results for samples submitted.

Sample Number	AU-WET PFB	CU PPM	PB PPM	ZN PPM	AG PPM
L6+OS 12+00E	5	9	14	48	0.7
L6+OS 12+50E	5	11	17	51	0.6
L6+OS 13+00E	5	10	15	53	0.8
L6+OS 13+50E	5	15	15	51	0.7
L6+OS 14+00E	10	18	17	38	0.9
L6+OS 14+50E	5	16	11	34	0.7
L6+OS 15+00E	5	16	24	60	1.1
L5+OS 0+00W	5	32	34	120	2.1
L5+OS 0+50W	5	22	20	79	0.8
L5+OS 1+00W	5	25	28	112	1.3
L5+OS 1+50W	5	27	21	106	1.4
L5+OS 2+00W	5	26	18	85	1.6
L5+OS 2+50W	10	32	19	78	2.3
L5+OS 3+00W	5	35	24	69	2.4
L5+OS 0+50E	5	21	24	77	0.9
L5+OS 1+00E	5	21	17	74	0.6
L5+OS 1+50E	5	18	16	75	0.7
L5+OS 2+00E	10	17	22	68	1.1
L5+OS 2+50E	5	15	21	67	2.1
L5+OS 3+00E	5	17	18	61	0.9
L5+OS 3+50E	5	16	19	74	1.0
L5+OS 4+00E	5	4	19	58	0.6
L5+OS 4+50E	5	14	21	66	0.7
L5+OS 5+00E	10	18	16	36	0.6
L5+OS 5+50E	5	4	19	53	0.9
L5+OS 6+00E	5	4	21	55	0.9
L5+OS 6+50E	5	5	33	83	1.0
L5+OS 7+00E	5	16	16	48	0.7
L5+OS 7+50E	5	11	20	51	0.6
L5+OS 8+00E	5	12	16	49	0.6

Certified by J. L. ...
 MIN-EN LABORATORIES LTD.

**** Certificate of GEOCHEM ****

Company:ENERGEX MINERALS
 Project:FURLONG/TOUR
 Attention:L.ECCLES

File:81-12/P3
 Date:JULY 24/88
 Type:SOIL GEOCHEM

We hereby certify the following results for samples submitted.

Sample Number	AU-WET PPB	CU PPM	PB PPM	ZN PPM	AG PPM
L5+0S 8+50E	5	12	16	54	0.9
L5+0S 9+00E	5	14	31	65	2.0
L5+0S 9+50E	5	20	28	94	1.0
L5+0S 10+00E	5	19	36	129	1.1
L5+0S 10+50E	5	83	20	57	0.7
L5+0S 11+00E	10	16	20	44	0.8
L5+0S 11+50E	5	23	19	49	0.6
L5+0S 12+00E	5	19	18	50	0.7
L5+0S 12+50E	5	16	16	45	0.9
L5+0S 13+00E	5	18	18	58	0.9
L5+0S 13+50E	5	9	21	47	0.7
L5+0S 14+00E	5	8	14	51	0.6
L5+0S 14+50E	5	9	19	45	0.8
L5+0S 15+00E	10	8	21	58	0.8
L7+0S 0+00W	5	16	12	41	0.7
L7+0S 0+50W	5	6	27	94	0.6
L7+0S 1+00W	5	16	15	43	0.8
L7+0S 1+50W	5	20	20	79	0.7
L7+0S 2+00W	5	20	20	86	0.8
L7+0S 2+50W	5	9	13	55	0.6
L7+0S 3+00W	10	8	11	61	0.6
L7+0S 0+50E	5	14	16	57	0.8
L7+0S 1+00E	5	5	22	60	0.7
L7+0S 1+50E	5	8	18	102	0.6
L7+0S 2+00E	5	23	14	88	1.4
L7+0S 2+50E	10	17	24	108	0.9
L7+0S 3+00E	5	4	28	84	0.6
L7+0S 3+50E	5	9	16	93	0.8
L7+0S 4+00E	5	12	15	47	0.7
L7+0S 4+50E	5	11	12	55	0.6

Certified by J. Little
 MIN-EN LABORATORIES LTD.

**** Certificate of GEOCHEM ****

Company: ENERGETX MINERALS
Project: FURLONG/TOUR
Attention: L.ECCLES

File: 81-12/P4
Date: JULY 25/88
Type: SOIL GEOCHEM

We hereby certify the following results for samples submitted.

Sample Number	AU-WET PFB	CU PPM	PB PPM	ZN PPM	AG PPM
L7+0S 5+00E	5	15	21	85	.7
L7+0S 5+50E	5	14	14	48	.6
L7+0S 6+00E	5	21	29	98	1.1
L7+0S 6+50E	5	82	22	56	2.3
L7+0S 7+00E	5	10	17	43	.8
L7+0S 7+50E	10	4	19	56	.9
L7+0S 8+00E	5	9	12	43	.7
L7+0S 8+50E	5	7	15	54	.7
L7+0S 9+00E	5	19	36	97	1.0
L7+0S 9+50E	10	14	25	79	1.4
L7+0S 10+00E	5	18	20	91	1.0
L7+0S 10+50E	5	14	25	67	.8
L7+0S 11+00E	5	13	14	43	.7
L7+0S 11+50E	5	15	10	47	.8
L7+0S 12+00E	5	16	19	51	.9
L7+0S 12+50E	5	4	15	84	1.1
L7+0S 13+00E	5	4	15	66	.9
L7+0S 13+50E	10	5	18	52	.7
L7+0S 14+00E	5	7	13	82	.9
L7+0S 14+50E	5	7	17	69	.8
L7+0S 15+00E	5	15	28	163	1.4
L8+0S 0+00W	5	11	15	54	.9
L8+0S 0+50W	5	12	14	43	.7
L8+0S 1+00W	5	16	22	118	.9
L8+0S 1+50W	10	16	16	82	.8
L8+0S 2+00W	5	12	13	73	.7
L8+0S 2+50W	5	5	20	101	.6
L8+0S 3+00W	5	8	26	125	.8
L8+0S 0+50E	25	11	15	67	.8
L8+0S 1+00E	10	24	22	134	2.8

Certified by J. Litch
MIN-EN LABORATORIES LTD.

**** Certificate of GEOCHEM ****

Company:ENERGEX MINERALS
Project:FURLONG/TOUR
Attention:L.ECCLES

File:81-12/P5
Date:JULY 25/88
Type:SOIL GEOCHEM

We hereby certify the following results for samples submitted.

Sample Number	AU-WET PPM	CU PPM	PB PPM	ZN PPM	AG PPM
L8+OS 1+50E	5	30	18	193	3.9
L8+OS 2+05E	5	23	19	104	1.6
L8+OS 2+55E	5	17	18	95	.8
L8+OS 3+00E	5	15	15	80	.8
L8+OS 3+50E	5	14	12	59	.7
L8+OS 4+00E	10	18	15	66	.9
L8+OS 4+50E	5	25	16	191	1.7
L8+OS 5+00E	5	15	14	74	.8
L8+OS 5+50E	5	21	20	88	.9
L8+OS 6+00E	5	16	15	66	.7
L8+OS 6+50E	5	11	21	88	1.1
L8+OS 7+00E	10	25	20	77	.9
L8+OS 7+50E	5	3	16	73	1.3
L8+OS 8+00E	5	11	18	56	.6
L8+OS 8+50E	5	16	16	57	.7
L8+OS 9+00E	5	25	15	79	1.8
L8+OS 9+50E	5	11	19	102	.8
L8+OS 10+00E	10	28	17	167	2.7
L8+OS 10+50E	5	23	23	119	1.2
L8+OS 11+00E	5	18	19	63	.9
L8+OS 11+50E	5	18	16	69	.7
L8+OS 12+00E	5	15	14	71	.6
L8+OS 12+50E	10	25	20	60	1.2
L8+OS 13+00E	5	15	10	50	.7
L8+OS 13+50E	5	15	12	54	.6
L8+OS 14+00E	5	14	13	74	.8
L9+OS 0+00W	5	17	22	68	.7
L9+OS 0+50W	5	20	24	84	.9
L9+OS 1+00W	5	24	67	96	.8
L9+OS 1+50W	5	23	16	92	1.4

Certified by

MIN-EN LABORATORIES LTD.

**** Certificate of GEOCHEM ****

Company:ENERGEX MINERALS
Project:FURLONG/TOUR
Attention:L.ECCLES

File:81-12/P6
Date:JULY 25/88
Type:SOIL GEOCHEM

We hereby certify the following results for samples submitted.

Sample Number	AU-WE PPB	CU PPM	PB PPM	ZN PPM	AG PPM
L9+0S 2+00W	5	25	34	100	1.4
L9+0S 2+50W	5	22	24	65	0.9
L9+0S 3+00W	10	16	10	41	0.6
L9+0S 0+50E	5	16	17	59	0.8
L9+0S 1+00E	5	22	10	54	0.9
L9+0S 1+50E	5	15	22	85	0.8
L9+0S 2+00E	5	15	20	84	1.3
L9+0S 2+50E	5	16	19	102	1.5
L9+0S 3+00E	5	13	14	51	0.7
L9+0S 3+50E	5	22	25	96	1.2
L9+0S 4+00E	5	22	25	91	1.9
L9+0S 4+50E	10	19	28	100	1.6
L9+0S 5+00E	5	28	20	63	2.7
L9+0S 5+50E	5	19	24	98	1.4
L9+0S 6+00E	5	14	21	71	1.3
L9+0S 6+50E	5	13	20	88	0.9
L9+0S 7+00E	5	17	22	85	0.9
L9+0S 7+50E	5	20	24	74	2.9
L9+0S 8+00E	5	12	17	57	1.0
L9+0S 8+50E	10	13	16	63	0.8
L9+0S 9+00E	5	14	16	58	0.6
L9+0S 9+50E	5	11	13	40	0.7
L9+0S 10+00E	5	15	13	46	0.9
L9+0S 10+50E	5	4	23	67	0.8
L9+0S 11+00E	5	16	15	46	0.6
L9+0S 11+50E	5	4	14	78	0.9
L9+0S 12+00E	5	5	15	60	0.6
L9+0S 12+50E	5	5	17	48	0.7
L9+0S 13+00E	5	19	29	107	1.2
L9+0S 13+50E	5	8	11	74	0.8

Certified by J. Kitchin

MIN-EN LABORATORIES LTD.

**** Certificate of GEOCHEM ****

Company:ENERGEX MINERALS
Project:FURLONG/TOUR
Attention:L.ECCLES

File:81-12/P7
Date:JULY 25/88
Type:SOIL GEOCHEM

We hereby certify the following results for samples submitted.

Sample Number	AU-WET PPB	CU PPM	PB PPM	ZN PPM	AG PPM
L9+0S 14+00E	5	10	13	56	.6
L9+0S 14+55E	5	16	22	141	1.4
L9+0S 15+05E	5	12	15	57	.8
L10+0S 0+00W	5	20	11	73	.9
L10+0S 0+50W	10	18	17	83	1.8
L10+0S 1+00W	5	25	12	63	.8
L10+0S 1+50W	5	28	9	72	.9
L10+0S 2+00W	5	11	13	55	.7
L10+0S 2+50W	5	13	16	92	.8
L10+0S 3+00W	5	12	9	42	.9
L10+0S 0+50E	5	17	17	72	.9
L10+0S 1+00E	5	15	19	63	1.1
L10+0S 1+50E	5	22	26	91	1.0
L10+0S 2+00E	10	19	22	90	.8
L10+0S 2+50E	5	12	12	41	.8
L10+0S 3+00E	5	12	20	80	1.0
L10+0S 3+50E	5	15	20	101	1.4
L10+0S 4+00E	25	29	22	115	1.2
L10+0S 4+50E	5	17	29	96	.8
L10+0S 5+00E	5	20	13	51	.7
L10+0S 5+50E	10	14	11	40	.6
L10+0S 6+00E	5	13	12	60	.9
L10+0S 6+50E	5	13	9	40	.8
L10+0S 7+00E	5	49	21	100	3.4
L10+0S 7+50E	5	23	18	64	1.9
L10+0S 8+00E	10	15	18	53	1.4
L10+0S 8+50E	5	13	18	85	1.8
L10+0S 9+00E	5	13	12	46	1.1
L10+0S 9+50E	5	35	19	89	.8
L10+0S 10+00E	5	18	20	86	.7

Certified by J. Boti
MIN-EN LABORATORIES LTD.

**** Certificate of GEOCHEM ****

Company: ENERGETX MINERALS
Project: FURLONG/TOUR
Attention: L. ECCLES

File: B1-12/P8
Date: JULY 25/88
Type: SOIL GEOCHEM

We hereby certify the following results for samples submitted.

Sample Number	AU-WET PFB	CU PPM	PB PPM	ZN PPM	AG PPM
L10+0S 10+50E	5	17	26	60	.8
L10+0S 11+05E	5	12	20	79	.9
L10+0S 11+55E	5	4	27	87	.6
L10+0S 12+00E	10	12	16	53	.7
L10+0S 12+50E	5	10	13	61	.8
L10+0S 13+00E	5	14	21	81	.8
L10+0S 13+50E	5	14	14	42	.6
L10+0S 14+00E	15	5	11	107	.8
L11+0S 0+00W	5	14	16	69	.7
L11+0S 0+50W	5	10	16	54	.9
L11+0S 1+00W	5	16	13	47	.6
L11+0S 1+50W	5	17	17	30	.7
L11+0S 2+00W	10	11	15	75	.8
L11+0S 2+50W	5	13	15	79	.7
L11+0S 3+00W	5	12	31	89	.8
L11+0S 0+50E	5	11	13	87	.8
L11+0S 1+00E	5	28	18	95	.9
L11+0S 1+50E	5	19	24	145	1.3
L11+0S 2+00E	10	22	15	94	.9
L11+0S 2+50E	5	17	17	76	.7
L11+0S 3+00E	5	16	17	73	.8
L11+0S 3+50E	5	34	15	124	.9
L11+0S 4+00E	5	27	17	95	.8
L11+0S 4+50E	10	18	22	90	.6
L11+0S 5+00E	5	27	21	121	.9
L11+0S 5+50E	5	13	18	62	.7
L11+0S 6+00E	5	15	20	55	.8
L11+0S 6+50E	5	13	22	66	1.0
L11+0S 7+00E	10	17	19	83	.8
L11+0S 7+50E	5	23	19	119	.9

Certified by J. L. H. T.

MIN-EN LABORATORIES LTD.

*** Certificate of GEOCHEM ***

Company:ENERGEX MINERALS
Project:FURLONG/TOUR
Attention:L.ECCLES

File:81-12/P9
Date:JULY 25/88
Type:SOIL GEOCHEM

We hereby certify the following results for samples submitted.

Sample Number	AU-WET PPB	CU PPM	PB PPM	ZN PPM	AG PPM
L11+OS 8+00E	5	20	19	68	1.1
L11+OS 8+50E	5	14	16	55	0.8
L11+OS 9+00E	10	7	16	75	0.7
L11+OS 9+50E	5	19	15	47	0.8
L11+OS 10+00E	5	12	27	56	0.9
L11+OS 10+50E	5	22	19	40	0.6
L11+OS 11+00E	5	11	23	68	0.9
L11+OS 11+50E	5	17	14	61	0.8
L11+OS 12+00E	10	18	16	54	0.7
L11+OS 12+50E	5	16	16	47	0.6
L11+OS 13+00E	5	13	12	35	0.8
L11+OS 13+50E	5	13	17	56	0.7
L11+OS 14+00E	20	13	19	56	0.7
L11+OS 14+28E	5	11	21	99	0.8
L12+OS 0+00W	10	4	18	70	0.7
L12+OS 0+50W	5	4	15	59	0.8
L12+OS 1+00W	5	8	20	80	0.9
L12+OS 1+50W	5	22	16	48	0.9
L12+OS 2+00W	5	17	20	74	0.8
L12+OS 2+50W	5	18	18	57	0.8
L12+OS 3+00W	5	33	20	104	1.9
L12+OS 0+50E	5	11	27	70	1.2
L12+OS 1+00E	5	36	27	118	5.6
L12+OS 1+50E	10	20	19	134	1.4
L12+OS 2+00E	5	18	17	90	2.3
L12+OS 2+50E	5	33	18	67	0.9
L12+OS 3+00E	5	3	22	89	1.0
L12+OS 3+50E	5	4	17	66	0.7
L12+OS 4+00E	5	10	15	43	0.8

Certified by J. L. ...
MIN-EN LABORATORIES LTD.

*** Certificate of GEOCHEM ***

Company:ENERGEX MINERALS
Project:FURLONG/TOUR
Attention:L.ECCLES

File:81-12/P10
Date:JULY 25/88
Type:SOIL GEOCHEM

We hereby certify the following results for samples submitted.

Sample Number	AU-WET PFB	CU PPM	PB PPM	ZN PPM	AG PPM
L12+0S 4+50E	15	8	13	61	.7
L12+0S 5+00E	5	12	15	46	.8
L12+0S 5+55E	10	3	27	137	.8
L12+0S 6+05E	5	7	30	91	.7
L12+0S 6+55E	5	12	19	55	.9
L12+0S 7+00E	5	6	20	66	.8
L12+0S 7+50E	5	28	31	87	2.3
L12+0S 8+00E	5	42	28	140	1.7
L12+0S 8+50E	5	24	27	133	2.6
L12+0S 9+00E	5	29	22	76	1.2
L12+0S 9+50E	10	39	30	106	1.1
L12+0S 10+00E	5	20	40	122	.9
L12+0S 10+50E	5	21	23	102	1.3
L12+0S 11+00E	5	10	16	49	.7
L12+0S 11+50E	5	13	15	72	.8
L12+0S 12+00E	5	44	17	64	1.2
L12+0S 12+40E	10	8	20	73	.7
L13+0S 0+00	5	35	12	132	.6
L13+0S 0+50W	5	20	21	81	.8
L13+0S 1+00W	5	15	17	65	.8
L13+0S 1+50W	5	18	28	114	1.0
L13+0S 2+00W	5	36	11	85	1.7
L13+0S 2+50W	10	29	22	286	1.8
L13+0S 3+00W	5	17	16	56	.9
L13+0S 0+50E	10	23	21	106	.8
L13+0S 1+00E	5	15	10	34	.7
L13+0S 1+50E	5	19	7	28	.8
L13+0S 2+00E	5	19	9	22	.4
L13+0S 2+50E	5	13	15	62	.9
L13+0S 3+00E	5	18	22	57	.8

Certified by J. hit
MIN-EN LABORATORIES LTD.

*** Certificate of GEOCHEM ***

Company:ENERGEX MINERALS
Project:FURLONG/TOUR
Attention:L.ECCLES

File:81-12/P11
Date:JULY 25/88
Type:SOIL GEOCHEM

We hereby certify the following results for samples submitted.

Sample Number	AU-WET PPB	CU PPM	PB PPM	ZN PPM	AG PPM
L13+0S 3+50E	5	18	14	65	.8
L13+0S 4+05E	5	32	22	83	.9
L13+0S 4+55E	5	26	22	101	.7
L13+0S 5+00E	10	19	27	106	.9
L13+0S 5+50E	5	12	28	127	.8
L13+0S 6+00E	5	53	30	73	1.9
L13+0S 6+50E	5	20	21	93	1.4
L13+0S 7+00E	5	22	18	107	.7
L13+0S 7+50E	5	89	29	125	.9
L13+0S 8+00E	5	18	19	87	.9
L13+0S 8+50E	15	19	17	55	.6
L13+0S 9+00E	5	30	18	93	1.8
L13+0S 9+50E	5	17	12	82	.8
L13+0S 10+00E	5	26	19	102	.9
L13+0S 10+50E	5	29	21	103	1.0
L13+0S 11+00E	5	23	15	83	.7
L13+0S 11+50E	5	13	21	78	.6
L13+0S 12+00E	10	6	21	111	.8
L15+0S 0+00W	15	14	15	66	.7
L15+0S 0+50W	5	13	12	41	.8
L15+0S 1+00W	5	20	15	80	.7
L15+0S 1+50W	5	32	17	95	.9
L15+0S 2+00W	10	12	12	43	.8
L15+0S 2+50W	5	11	13	49	.7
L15+0S 3+00W	5	16	11	54	.8
L15+0S 0+50W	5	41	26	88	1.2
L15+0S 1+00W	5	23	23	94	1.3
L15+0S 1+50W	5	21	17	66	.7
L15+0S 2+00W	5	14	17	94	.6
L15+0S 2+50W	5	23	16	124	.9

Certified by J. L. ...
MIN-EN LABORATORIES LTD.

**** Certificate of GEOCHEM ****

Company: ENERGETX MINERALS
Project: FURLONG/TOUR
Attention: L.ECCLES

File: 81-12/P12
Date: JULY 24/88
Type: SOIL GEOCHEM

We hereby certify the following results for samples submitted.

Sample Number	AU-WET PPB	CU PPM	PB PPM	ZN PPM	AG PPM
L15+0S 3+00E	5	15	11	37	0.8
L15+0S 3+50E	5	15	15	76	1.0
L15+0S 4+00E	5	52	19	126	2.4
L15+0S 4+50E	10	44	18	89	1.6
L15+0S 5+00E	10	22	25	120	1.7
L15+0S 5+50E	5	14	19	126	1.4
L15+0S 6+00E	50	10	14	95	1.3
L15+0S 6+50E	10	16	15	48	0.8
L15+0S 7+00E	5	14	21	67	0.8
L15+0S 7+50E	5	15	24	93	1.6
L15+0S 8+00E	5	17	19	127	1.5
L15+0S 8+50E	5	11	13	58	0.9
L15+0S 9+00E	5	20	21	82	0.8
L15+0S 9+35E	5	22	12	82	1.2

Certified by J. L. ...
MIN-EN LABORATORIES LTD.



MIN-EN LABORATORIES LTD.

SPECIALISTS IN MINERAL ENVIRONMENTS
CHEMISTS • ASSAYERS • ANALYSTS • GEOCHEMISTS

VANCOUVER OFFICE:
705 WEST 15TH STREET
NORTH VANCOUVER, B.C. CANADA V7M 1T2
TELEPHONE (604) 980-5814 OR (604) 988-4524
TELEX: VIA U.S.A. 7601087 • FAX (604) 980-9621

TIMMINS OFFICE:
33 EAST IROQUOIS ROAD
P.O. BOX 867
TIMMINS, ONTARIO CANADA P4N 7G7
TELEPHONE: (705) 264-9996

26


Certificate of GEOCHEM

Company: ENERGETX MINERALS
Project: FURLONG/TOUR
Attention: L. ECCLES

File: B1-1B/P1
Date: JULY 27/88
Type: SOIL GEOCHEM

We hereby certify the following results for samples submitted.

Sample Number	CU PPM	PB PPM	ZN PPM	AG PPM	AU-WET PPB
L14+00S 0+00W	21	15	72	1.7	10
L14+00S 0+50W	28	16	89	.9	5
L14+00S 1+00W	22	15	67	1.0	5
L14+00S 1+50W	13	15	63	.8	10
L14+00S 2+00W	26	15	56	.7	5
L14+00S 2+50W	16	18	37	.6	10
L14+00S 3+00W	15	19	58	.5	5
L14+00S 0+50E	20	15	67	1.2	5
L14+00S 1+00E	19	16	77	.9	5
L14+00S 1+50E	25	12	90	1.1	5
L14+00S 2+00E	16	13	68	.8	5
L14+00S 2+50E	14	15	70	.7	5
L14+00S 3+00E	19	21	109	.9	5
L14+00S 3+50E	48	20	54	1.6	5
L14+00S 4+00E	12	19	64	.7	5
L14+00S 4+50E	34	12	85	.9	15
L14+00S 5+00E	29	10	53	1.0	5
L14+00S 5+50E	22	16	86	1.3	10
L14+00S 6+00E	32	9	103	1.2	5
L14+00S 6+50E	17	6	106	1.8	5
L14+00S 7+00E	29	18	108	.9	5
L14+00S 7+50E	14	21	78	.7	10
L14+00S 8+00E	20	17	88	1.3	5
L14+00S 8+50E	34	18	99	1.5	5
L14+00S 9+00E	25	17	101	1.2	10
L14+00S 9+50E	19	14	74	.9	5
L14+00S 10+00E	20	24	66	.8	5
L14+00S 10+50E	17	20	50	.8	5
L14+00S 11+20E	9	24	87	.9	10
L16+00S 0+00W	25	16	44	1.4	5

Certified by 

MIN-EN LABORATORIES LTD.



MIN-EN LABORATORIES LTD.

SPECIALISTS IN MINERAL ENVIRONMENTS
CHEMISTS • ASSAYERS • ANALYSTS • GEOCHEMISTS

27
VANCOUVER OFFICE:
705 WEST 15TH STREET
NORTH VANCOUVER, B.C. CANADA V7M 1T2
TELEPHONE (604) 980-5814 OR (604) 988-4524
TELEX: VIA U.S.A. 7801067 • FAX (604) 980-9621
TIMMINS OFFICE:
33 EAST IROQUOIS ROAD
P.O. BOX 867
TIMMINS, ONTARIO CANADA P4N 7G7
TELEPHONE: (705) 264-9996

Certificate of Geochem

Company: ENERGEX MINERALS
Project: FURLONG/TOUR
Attention: L. ECCLES

File: 81-18/P2
Date: JULY 27/88
Type: SOIL GEOCHEM

I hereby certify the following results for samples submitted.

Sample Number	CU PPM	PB PPM	ZN PPM	AG PPM	AU-WET PPM
L16+00S 0+50W	44	11	53	1.4	10
L16+00S 1+00W	28	15	78	1.7	5
L16+00S 1+50W	27	12	46	.9	15
L16+00S 2+00W	25	17	81	.7	5
L16+00S 2+50W	21	15	177	.9	5
L16+00S 3+00W	4	13	49	.8	10
L16+00S 0+50E	30	13	90	.8	5
L16+00S 1+00E	28	10	99	1.4	5
L16+00S 1+50E	32	14	73	1.3	5
L16+00S 2+00E	29	11	64	.9	5
L16+00S 2+50E	25	11	81	1.9	5
L16+00S 3+00E	31	11	59	1.2	5
L16+00S 3+50E	26	11	100	1.3	10
L16+00S 4+00E	17	16	76	.8	5
L16+00S 4+50E	28	16	74	.9	5
L16+00S 5+00E	25	16	75	.8	5
L16+00S 5+50E	14	19	66	.9	10
L16+00S 6+00E	34	12	88	1.2	10
L16+00S 6+50E	47	13	70	1.6	5
L16+00S 7+00E	29	28	60	1.1	5
L16+00S 7+50E	15	20	68	1.3	10
L16+00S 8+00E	13	17	89	1.8	5
L16+00S 8+50E	18	17	107	1.0	5
L16+00S 9+00E	11	21	86	1.3	5
L16+00S 9+50E	12	20	73	.7	5
L16+00S 10+00E	14	18	81	.8	10
L17+00S 0+00W	16	17	102	1.0	10
L17+00S 0+50W	13	17	92	1.4	5
L17+00S 1+00W	20	21	76	.9	15
L17+00S 1+50W	16	17	55	.7	5

Certified by

MIN-EN LABORATORIES LTD.



MIN-EN LABORATORIES LTD.

SPECIALISTS IN MINERAL ENVIRONMENTS
CHEMISTS • ASSAYERS • ANALYSTS • GEOCHEMISTS

28
VANCOUVER OFFICE:
705 WEST 15TH STREET
NORTH VANCOUVER, B.C. CANADA V7M 1T2
TELEPHONE (604) 980-5814 OR (604) 988-4524
TELEX: VIA U.S.A. 7601087 • FAX (604) 980-9621

TIMMINS OFFICE:
33 EAST ROQUOIS ROAD
P.O. BOX 867
TIMMINS, ONTARIO CANADA P4N 7G7
TELEPHONE: (705) 264-9996

Certificate of Geochem

Company: ENERGEX
Project: FURLONG/TOUR
Attention:

File: 81-18/P3
Date: JULY 27/88
Type: SOIL GEOCHEM

We hereby certify the following results for samples submitted.

Sample Number	CU PPM	PB PPM	ZN PPM	AG PPM	AU-WET PFB
L17+00S 2+00W	NO SAMPLE				
L17+00S 2+50W	NO SAMPLE				
L17+00S 3+00W	NO SAMPLE				
L17+00S 0+50E	NO SAMPLE				
L17+00S 1+00E	NO SAMPLE				
L17+00S 1+50E	NO SAMPLE				
L17+00S 2+00E	16	21	61	.8	5
L17+00S 2+50E	21	20	75	.9	5
L17+00S 3+00E	24	15	70	.7	5
L17+00S 3+50E	21	16	85	.8	5
L17+00S 4+00E	22	18	104	.7	5
L17+00S 4+50E	15	7	97	.9	5
L17+00S 5+00E	21	13	85	.8	10
L17+00S 5+50E	28	11	84	1.6	10
L17+00S 6+00E	29	21	102	.8	5
L17+00S 6+50E	19	12	102	.9	10
L17+00S 7+00E	19	9	91	1.0	5
L17+00S 7+50E	27	12	84	1.1	10
L17+00S 8+00E	31	14	94	1.9	15
L17+00S 8+50E	11	20	74	.7	10
L17+00S 9+00E	10	14	94	.8	5
L17+00S 9+50E	2	20	104	.6	5
L17+00S 10+00E	17	12	69	.8	5
L17+00S 10+25E	2	23	118	.9	5
L18+00S 0+00W	27	32	107	1.4	10
L18+00S 0+50W	26	12	131	2.1	10
L18+00S 1+00W	28	20	131	1.9	15
L18+00S 1+50W	36	21	68	1.7	10
L18+00S 2+00W	20	16	91	1.1	225
L18+00S 2+50W	14	23	73	1.0	10

Certified by

MIN-EN LABORATORIES LTD.



MIN-EN LABORATORIES LTD.

SPECIALISTS IN MINERAL ENVIRONMENTS
CHEMISTS • ASSAYERS • ANALYSTS • GEOCHEMISTS

VANCOUVER OFFICE:
705 WEST 15TH STREET
NORTH VANCOUVER, B.C. CANADA V7M 1T2
TELEPHONE (604) 980-5814 OR (604) 988-4524
TELEX: VIA U.S.A. 7601087 • FAX (604) 980-9621

TIMMINS OFFICE:
33 EAST IROQUOIS ROAD
P.O. BOX 867
TIMMINS, ONTARIO CANADA P4N 7G7
TELEPHONE: (705) 264-9996

29

Certificate of Geochem

Company: ENERGEX MINERALS
Project: FURLONG/TOUR
Attention: L. ECCLES

File: 81-18/P4
Date: JULY 27/88
Type: SOIL GEOCHEM

I hereby certify the following results for samples submitted.

Sample Number	CU PPM	PB PPM	ZN PPM	AG PPM	ALU-WET PPB
L18+00S 3+00W	6	22	51	.7	10
L18+00S 0+50E	24	17	119	1.3	5
L18+00S 1+00E	26	18	94	1.4	5
L18+00S 1+50E	34	19	44	1.2	5
L18+00S 2+00E	14	19	62	.8	5
L18+00S 2+50E	20	26	69	.7	20
L18+00S 3+00E	19	25	95	.7	10
L18+00S 3+50E	19	23	62	.8	10
L18+00S 4+00E	28	30	63	1.3	5
L18+00S 4+50E	17	19	60	.9	5
L18+00S 5+00E	26	15	87	1.4	5
L18+00S 5+50E	26	17	87	1.8	10
L18+00S 6+00E	30	16	91	.7	5
L18+00S 6+50E	36	19	84	1.4	5
L18+00S 7+00E	17	23	82	.7	10
L18+00S 7+50E	14	18	125	1.1	5
L18+00S 8+00E	3	21	120	.8	10
L18+00S 8+50E	18	16	95	.9	5
L18+00S 9+50E	2	26	113	.7	5
L18+00S 10+50E	12	31	115	.8	10
L18+00S 11+00E	2	21	92	.7	5
L19+00S 0+50W	22	18	107	1.3	5
L19+00S 1+00W	34	14	78	.9	5
L19+00S 1+50W	12	18	60	.8	5
L19+00S 2+00W	20	21	82	1.9	5
L19+00S 2+50W	23	19	106	1.4	5
L19+00S 3+00W	28	17	90	1.2	5
L19+00S 0+00E	29	18	64	.9	5
L19+00S 0+50E	33	24	102	1.2	5
L19+00S 1+00E	21	25	75	.8	10

Certified by

MIN-EN LABORATORIES LTD.



MIN-EN LABORATORIES LTD.

SPECIALISTS IN MINERAL ENVIRONMENTS
CHEMISTS • ASSAYERS • ANALYSTS • GEOCHEMISTS

30
VANCOUVER OFFICE:
706 WEST 16TH STREET
NORTH VANCOUVER, B.C. CANADA V7M 1T2
TELEPHONE (604) 980-5814 OR (604) 988-4524
TELEX: VIA U.S.A. 7801067 • FAX (604) 980-9621

TIMMINS OFFICE:
33 EAST IROQUOIS ROAD
P.O. BOX 867
TIMMINS, ONTARIO CANADA P4N 7G7
TELEPHONE: (705) 284-9666

Certificate of Geochem

Company: ENERGETIC MINERALS
Project: FURLONG/TOUR
Attention: L. ECCLES

File: 91-18/P5
Date: JULY 27/88
Type: SOIL GEOCHEM

We hereby certify the following results for samples submitted.

Sample Number	CU PPM	PR PPM	ZN PPM	AS PPM	ALU-WET PPB
L19+00S 1+50E	14	20	52	.7	20
L19+00S 2+00E	16	15	72	.9	5
L19+00S 2+50E	26	18	83	1.4	10
L19+00S 3+00E	6	15	77	.9	5
L19+00S 3+50E	25	14	87	1.2	10
L19+00S 4+00E	24	12	86	1.4	5
L19+00S 4+50E	16	18	82	1.3	5
L19+00S 5+00E	17	12	101	1.4	5
L19+00S 5+50E	20	11	91	.9	5
L19+00S 6+00E	22	15	82	.7	10
L19+00S 6+50E	16	9	140	1.3	5
L19+00S 7+00E	18	17	119	.9	5
L19+00S 7+50E	26	7	89	1.5	5
L19+00S 8+00E	27	15	103	1.6	5
L19+00S 8+50E	7	18	64	.7	10
L19+00S 9+50E	7	27	142	.8	5
L19+00S 10+00E	3	25	134	.8	15
L19+00S 10+50E	4	25	149	.9	10
L19+00S 10+79E	4	24	99	.7	5
20+00S 0+50W	17	18	39	.6	5
L20+00S 1+00W	23	37	105	.9	10
L20+00S 1+50W	20	21	104	.6	5
L20+00S 2+00W	5	15	55	.7	5
L20+00S 2+50W	17	19	36	.9	5
L20+00S 3+00W	17	19	36	.5	5
L20+00S 0+00E	19	18	122	1.6	5
L20+00S 0+50E	20	16	102	1.7	10
L20+00S 1+00E	12	18	48	.8	5
L20+00S 1+50E	49	19	80	1.1	5
L20+00S 2+00E	24	19	79	.9	5

Certified by

MIN-EN LABORATORIES LTD.



MIN-EN LABORATORIES LTD.

SPECIALISTS IN MINERAL ENVIRONMENTS
CHEMISTS • ASSAYERS • ANALYSTS • GEOCHEMISTS

31
VANCOUVER OFFICE:
705 WEST 15TH STREET
NORTH VANCOUVER, B.C. CANADA V7M 1T2
TELEPHONE (604) 980-6814 OR (604) 988-4524
TELEX: VIA U.S.A. 7801067 • FAX (604) 980-9621
TIMMINS OFFICE:
33 EAST IROQUOIS ROAD
P.O. BOX 867
TIMMINS, ONTARIO CANADA P4N 7G7
TELEPHONE: (705) 264-9996

Certificate of Geochem

Company: ENERGETX MINERALS
Project: FURLONG/TOUR
Attention: L. ECCLES

File: 81-18/P6
Date: JULY 27/88
Type: SOIL GEOCHEM

We hereby certify the following results for samples submitted.

Sample Number	CU PPM	PB PPM	ZN PPM	AG PPM	ALI-WET PPM
L20+00S 2+50E	15	19	71	.9	5
L20+00S 3+00E	27	14	88	1.4	10
L20+00S 3+50E	18	15	84	1.1	5
L20+00S 4+00E	22	15	93	1.3	10
L20+00S 4+50E	20	18	79	1.0	5
L20+00S 5+00E	25	16	75	.9	5
L20+00S 5+50E	21	12	105	1.5	5
L20+00S 6+00E	35	13	122	1.4	10
L20+00S 6+50E	22	19	111	1.1	5
L20+00S 7+00E	33	8	143	1.8	5
L20+00S 7+50E	26	8	130	.9	5
L20+00S 8+00E	13	21	53	.6	5
L20+00S 8+50E	9	14	91	.9	5
L20+00S 9+00E	14	20	121	.8	10
L20+00S 10+00E	4	25	125	.7	5
L20+00S 10+50E	7	23	88	.8	5
L21+00S 0+50W	22	24	115	1.9	5
L21+00S 1+00W	15	16	75	.8	5
L21+00S 1+50W	23	25	97	1.3	5
L21+00S 2+00W	21	16	53	.9	10
L21+00S 2+50W	21	37	102	2.4	5
L21+00S 3+00W	19	18	30	.7	5
L21+00S 0+00E	18	19	55	.8	5
L21+00S 0+50E	21	19	78	2.0	5
L21+00S 1+00E	17	22	91	1.0	5
L21+00S 1+50E	26	18	94	1.3	5
L21+00S 2+00E	16	18	51	.7	5
L21+00S 2+50E	19	18	68	.8	10
L21+00S 3+00E	28	13	87	1.5	10
L21+00S 3+50E	18	7	113	.9	5

Certified by

MIN-EN LABORATORIES LTD.



**MIN-EN
LABORATORIES LTD.**

SPECIALISTS IN MINERAL ENVIRONMENTS
CHEMISTS • ASSAYERS • ANALYSTS • GEOCHEMISTS

32
VANCOUVER OFFICE:
706 WEST 16TH STREET
NORTH VANCOUVER, B.C. CANADA V7M 1T2
TELEPHONE (604) 980-5814 OR (604) 988-4524
TELEX: VIA U.S.A. 7601067 • FAX (604) 980-9621

TIMMINS OFFICE:
33 EAST IROQUOIS ROAD
P.O. BOX 867
TIMMINS, ONTARIO CANADA P4N 7G7
TELEPHONE: (705) 264-9996

Certificate of GEOCHEM

Company: **ENERGEX MINERALS**
Project: **FURLONG/TOUR**
Attention:

File: **81-18/P7**
Date: **JULY 26/88**
Type: **SOIL GEOCHEM**

We hereby certify the following results for samples submitted.

Sample Number	CU PPM	PB PPM	ZN PPM	AG PPM	AU-WET PPB
L21+00S 4+00E	16	20	110	0.9	10
L21+00S 4+50E	19	28	91	1.0	5
L21+00S 5+00E	18	15	60	0.6	10
L21+00S 5+50E	18	7	115	0.9	15
L21+00S 6+00E	22	15	113	0.9	10
L21+00S 6+50E	33	26	85	0.7	10
L21+00S 7+00E	22	24	100	0.8	5
L21+00S 8+00E	5	20	94	0.7	20
L21+00S 8+50E	11	21	67	0.5	15
L21+00S 9+00E	23	25	114	0.8	10
L21+00S 9+50E	12	22	91	0.7	5
L21+00S 10+00E	15	25	98	0.8	15
L21+00S 10+50E	19	33	112	0.5	10
L21+00S 11+50E	4	22	119	0.6	85
L22+00S 0+50W	34	17	88	1.9	5
L22+00S 1+00W	35	24	111	2.0	15
L22+00S 1+50W	36	19	95	1.4	10
L22+00S 2+00W	45	18	112	2.1	5
L22+00S 2+50W	16	19	72	0.4	15
L22+00S 3+00W	17	18	94	0.5	10
L22+00S 0+00E	18	15	96	0.6	20
L22+00S 0+50E	29	17	85	0.9	5
L22+00S 1+00E	24	22	136	1.0	5
L22+00S 1+50E	17	17	100	0.9	10
L22+00S 2+00E	15	21	91	0.8	15
L22+00S 2+50E	25	14	107	0.6	5
L22+00S 3+00E	21	6	97	0.8	5
L22+00S 3+50E	18	19	107	1.2	5
L22+00S 4+00E	15	17	74	1.0	5
L22+00S 4+50E	23	14	113	1.4	10

Certified by



MIN-EN LABORATORIES LTD.



MIN-EN LABORATORIES LTD.

SPECIALISTS IN MINERAL ENVIRONMENTS
CHEMISTS • ASSAYERS • ANALYSTS • GEOCHEMISTS

VANCOUVER OFFICE:
705 WEST 15TH STREET
NORTH VANCOUVER, B.C. CANADA V7M 1T2
TELEPHONE (604) 980-5814 OR (604) 988-4524
TELEX: VIA U.S.A. 7601087 • FAX (604) 980-9821

TIMMINS OFFICE:
33 EAST IROQUOIS ROAD
P.O. BOX 867
TIMMINS, ONTARIO CANADA P4N 7G7
TELEPHONE: (705) 264-8996

Certificate of Geochem

Company: ENERDEX MINERALS
Project: FURLONG/TOUR
Attention: L. ECCLES

File: 81-18/P8
Date: JULY 27/88
Type: SOIL GEOCHEM

We hereby certify the following results for samples submitted.

Sample Number	CU PPM	PB PPM	ZN PPM	AG PPM	AU-WET PPB
L22+00S 5+00E	20	8	103	1.2	5
L22+00S 5+50E	23	18	100	1.3	10
L22+00S 6+00E	15	19	106	1.1	5
L22+00S 6+50E	19	19	60	.8	5
L22+00S 7+00E	31	19	102	1.2	5
L22+00S 8+00E	6	14	68	1.0	5
L22+00S 8+50E	5	26	80	.7	5
L22+00S 9+00E	4	23	131	.8	10
L22+00S 9+50E	18	30	88	.6	10
L22+00S 10+00E	12	28	94	.9	15
L23+00S 1+00W	26	12	136	2.2	5
L23+00S 1+50W	8	21	64	.9	5
L23+00S 2+00W	27	18	75	1.3	5
L23+00S 2+50W	12	22	61	.8	5
L23+00S 3+00W	25	12	94	1.6	5
L23+00S 0+00E	30	16	35	1.3	10
L23+00S 0+50E	55	15	153	1.4	5
L23+00S 1+00E	45	13	63	.9	5
L23+00S 1+50E	15	12	128	2.3	5
L23+00S 2+00E	34	16	96	1.4	5
L23+00S 2+50E	17	18	76	.9	5
L23+00S 3+00E	31	15	103	1.5	10
L23+00S 3+50E	17	18	115	1.4	5
L23+00S 4+00E	14	19	64	.7	5
L23+00S 4+50E	17	21	77	.8	5
L23+00S 5+00E	20	16	132	.8	10
L23+00S 5+50E	19	22	75	.5	5
L23+00S 6+00E	17	27	97	.9	5
L23+00S 6+50E	48	23	51	.9	10
L23+00S 7+50E	5	27	83	.8	5

Certified by 
MIN-EN LABORATORIES LTD.



MIN-EN LABORATORIES LTD.

SPECIALISTS IN MINERAL ENVIRONMENTS
CHEMISTS • ASSAYERS • ANALYSTS • GEOCHEMISTS

34
VANCOUVER OFFICE:
705 WEST 15TH STREET
NORTH VANCOUVER, B.C. CANADA V7M 1T2
TELEPHONE (604) 980-5814 OR (604) 988-4524
TELEX: VIA U.S.A. 7601067 • FAX (604) 980-9821

TIMMINS OFFICE:
33 EAST IROQUOIS ROAD
P.O. BOX 867
TIMMINS, ONTARIO CANADA P4N 7G7
TELEPHONE: (705) 264-9996

Certificate of Geochem

Company: ENERBEX MINERALS
Project: FURLONG/TOUR
Attention: L. ECCLES

File: 81-18/P9
Date: JULY 27/88
Type: SOIL GEOCHEM

We hereby certify the following results for samples submitted.

Sample Number	CU PPM	PB PPM	ZN PPM	AG PPM	AU-WET PPB
L23+00S 8+00E	14	21	66	.8	5
L23+00S 8+50E	19	26	108	1.4	15
L23+00S 9+00E	10	21	77	.9	5
L24+00S 1+00W	29	15	69	1.2	10
L24+00S 1+50W	20	17	101	2.1	10
L24+00S 2+00W	31	13	63	1.4	5
L24+00S 2+50W	28	18	78	1.3	5
L24+00S 0+00E	35	12	59	1.1	10
L24+00S 0+50E	28	24	122	1.6	5
L24+00S 1+00E	25	18	69	.9	5
L24+00S 1+50E	16	19	64	1.1	5
L24+00S 2+00E	20	21	59	.8	10
L24+00S 2+50E	29	12	94	1.2	5
L24+00S 3+00E	26	11	90	1.4	5
L24+00S 3+50E	18	20	61	.9	5
L24+00S 4+00E	19	21	97	.8	5
L24+00S 4+50E	24	11	106	1.2	5
L24+00S 5+00E	20	18	128	1.1	5
L24+00S 5+50E	32	27	57	1.3	5
L24+00S 6+00E	28	17	131	.9	10
L24+00S 6+50E	22	7	139	1.4	5
L24+00S 7+00E	12	15	72	1.0	5
L24+00S 7+50E	10	21	67	.7	5
L24+00S 8+00E	12	25	77	.8	5
L27+00S 0+50W	29	18	87	1.6	5
L27+00S 1+00W	30	19	88	2.3	5
L27+00S 1+50W	19	9	120	1.2	10
L27+00S 2+00W	26	22	109	1.4	10
L27+00S 2+50W	26	13	70	1.7	5
L27+00S 3+00W	29	13	90	1.6	5

Certified by


MIN-EN LABORATORIES LTD.



MIN-EN LABORATORIES LTD.

SPECIALISTS IN MINERAL ENVIRONMENTS
CHEMISTS • ASSAYERS • ANALYSTS • GEOCHEMISTS

VANCOUVER OFFICE:
705 WEST 15TH STREET
NORTH VANCOUVER, B.C. CANADA V7M 1T2
TELEPHONE (604) 980-5814 OR (604) 988-4524
TELEX: VIA U.S.A. 7801067 • FAX (604) 980-8621

TIMMINS OFFICE:
33 EAST IROQUOIS ROAD
P.O. BOX 867
TIMMINS, ONTARIO CANADA P4N 7G7
TELEPHONE: (705) 284-9698

Certificate of Geochem

Company: ENERGETX MINERALS
Project: FURLONG/TOUR
Attention: L. ECCLES

File: B1-18/P10
Date: JULY 27/88
Type: SOIL GEOCHEM

I hereby certify the following results for samples submitted.

Sample Number	CU PPM	PB PPM	ZN PPM	AG PPM	AU-WET PPM
L27+00S 3+50W	21	14	88	1.7	10
L27+00S 4+00W	16	19	64	.8	5
L27+00S 4+50W	16	12	47	.9	5
L27+00S 5+00W	27	12	69	1.2	10

Certified by

MIN-EN LABORATORIES LTD.

CDN RESOURCE LABORATORIES LTD.

6329 BERESFORD STREET, BURNABY, B.C. V5E 1B3 / PH: 435-8376 / FAX: 435-9746

GEOCHEMICAL REPORT

To: Energex Minerals Ltd.
2500 - 555 West Hastings
P.O. Box 12052
Vancouver, B.C., V6B 4N5

Number: 88382
Date: August 15, 1988
Proj.: Tour/Furlong

Attn: A. O. Birkeland

	Au ppb	Ag ppm	Cu ppm	Pb ppm	Zn ppm
L25+005 3+00W	< 5	0.1	16	18	90
L25+005 2+50W TF	<10	0.1	28	5	52
L25+005 2+50W	<10	0.1	30	12	114
L25+005 2+00W	< 5	0.1	16	22	94
L25+005 1+50W	< 5	0.1	18	4	74
L25+005 1+00W	< 5	0.1	30	8	94
L25+005 0+50W	< 5	0.1	16	6	88
L25+005 0+00	< 5	0.1	6	5	60
L25+005 0+50E	< 5	0.1	8	6	58
L25+005 1+00E	< 5	0.1	8	6	52
L25+005 1+50E	<40	0.2	26	18	122
L25+005 2+00E	<10	0.4	24	4	72
L25+005 2+50E	<15	0.1	28	7	58
L25+005 3+00E	<10	0.1	34	9	62
L25+005 3+50E	< 5	0.1	34	5	74
L25+005 4+00E	< 5	0.1	28	7	72
L25+005 4+50E	30	1.7	26	8	84
L25+005 5+00E	< 5	2.1	38	9	86
L25+005 5+50E	< 5	0.1	20	10	72
L25+005 6+00E	<25	0.1	24	13	128
L25+005 6+50E	70	0.1	6	15	56
L25+005 7+00E	< 5	0.1	8	10	58
L25+005 7+50E	< 5	0.1	10	8	64
L25+005 7+92E	< 5	0.1	16	13	122
L26+005 3+00W	<10	0.1	34	20	128
L26+005 2+50W	< 5	0.1	22	13	92
L26+005 2+00W	< 5	0.1	20	6	100
L26+005 1+50W	<10	0.1	22	1	44
L26+005 1+00W	< 5	0.1	20	9	64
L26+005 0+50W	<15	0.1	18	7	52
L26+005 0+00	< 5	0.1	14	6	102
L26+005 0+50E	< 5	0.1	6	4	58
L26+005 1+00E	< 5	0.1	24	3	84
L26+005 1+50E	< 5	0.1	38	10	42
L26+005 2+00E	10	0.1	18	7	80
L26+005 2+50E	< 5	0.1	32	1	36
L26+005 3+00E	< 5	0.1	16	12	44
L26+005 3+50E	< 5	0.1	20	2	18
L26+005 4+00E	10	0.1	6	6	44

Duncan Sandison

CDN RESOURCE LABORATORIES LTD.

6329 BERESFORD STREET, BURNABY, B.C. V5E 1B3 / PH: 435-8376 / FAX: 435-9746

GEOCHEMICAL REPORT

To: Energex Minerals Ltd.
2500 - 555 West Hastings
P.O. Box 12052
Vancouver, B.C., V6B 4N5

Number: 88382
Date: August 15, 1988
Proj.: Tour/Furlong

Attn: A. O. Birkeland

	Au	Ag	Cu	Pb	Zn
	ppb	ppm	ppm	ppm	ppm
L26+005 4+50E	< 5	0.1	28	16	72
.26+005 5+00E	< 5	0.1	22	10	102
.26+005 5+50E	< 5	0.4	48	13	128
L26+005 6+50E	< 5	0.1	8	8	68
.26+005 7+00E	< 5	0.1	12	13	88
.26+005 7+36E	< 5	0.1	8	11	84
L27+005 0+00	<10	0.1	30	3	72
.27+005 0+50E	<20	0.1	14	6	144
L27+005 1+00E	<30	0.1	42	9	72
L27+005 1+50E	<15	0.1	8	4	46
.27+005 2+00E	<10	0.1	6	8	74
L27+005 2+50E	< 5	0.1	8	6	102
L27+005 3+00E	<10	0.1	26	7	92
L27+005 3+50E	<20	1.6	30	28	86
L27+005 4+00E	< 5	0.3	26	16	66
L27+005 4+50E	<30	0.1	20	15	126
L27+005 5+00E	< 5	0.1	8	9	78
L27+005 5+50E	< 5	0.2	30	10	140
L27+005 6+00E	10	0.1	12	9	100
L27+005 6+50E	< 5	0.1	10	13	84
L27+005 7+00E	< 5	0.1	6	10	86
L28+005 5+00W	< 5	0.1	24	16	84
L28+005 4+50W	< 5	0.1	8	7	58
L28+005 4+00W	< 5	0.1	6	4	42
L28+005 3+50W	< 5	0.1	6	8	48
L28+005 3+00W	< 5	0.1	22	10	88
L28+005 2+50W	< 5	0.1	26	12	102
L28+005 1+50W	< 5	0.1	20	3	104
L28+005 1+00W	<15	0.1	24	8	136
L28+005 0+50W	< 5	0.1	18	3	82
L28+005 0+00	<35	0.1	16	11	90
L28+005 0+50E	<25	0.1	33	9	107
L28+005 1+00E	< 5	0.1	14	6	84
L28+005 1+50E	<25	0.1	20	9	110
L28+005 2+00E	<10	0.1	34	5	76
L28+005 2+50E	< 5	0.1	8	9	92
L28+005 3+00E	<15	0.1	30	16	102
L28+005 3+50E	< 5	0.1	24	16	82

Duncan Anderson

CDN RESOURCE LABORATORIES LTD.

6329 BERESFORD STREET, BURNABY, B.C. V5E 1B3 / PH. 435-8376 / FAX: 435-9746

GEOCHEMICAL REPORT

To: **Energex Minerals Ltd.**
 2500 - 555 West Hastings
 P.O. Box 12052
 Vancouver, B.C., V6B 4N5

Number: **88382**
 Date: **August 15, 1988**
 Proj.: **Tour/Furlong**

Attn: **A. O. Birkeland**

	Au ppb	Ag ppm	Cu ppm	Pb ppm	Zn ppm
L28+00S 4+00E	< 5	0.1	14	11	66
L28+00S 4+50E	< 5	0.1	28	12	92
L28+00S 5+00E	< 5	0.1	6	9	106
L28+00S 5+50E	< 5	0.1	30	16	134
L28+00S 6+00E	< 5	0.1	6	10	68
L28+00S 6+50E	< 5	0.1	6	6	62
L28+00S 7+00E	< 5	0.1	8	11	106
L28+00S 7+50E	20	0.1	10	14	100
L29+00S 5+00W	< 5	0.1	6	5	40
L29+00S 4+50W	< 5	0.1	6	5	42
L29+00S 4+00W	< 5	0.1	8	6	54
L29+00S 3+50W	< 5	0.1	6	5	52
L29+00S 3+00W	< 5	0.5	24	11	134
L29+00S 2+50W	< 5	0.1	2	5	46
L29+00S 2+00W	< 5	0.1	4	8	46
L29+00S 1+50W	<10	0.9	22	18	110
L29+00S 1+00W	< 5	0.1	6	8	52
L29+00S 0+50W	< 5	0.1	6	6	46
L29+00S 0+00	< 5	0.1	22	8	84
L29+00S 0+50E	<10	0.5	26	11	62
L29+00S 1+00E	<10	0.1	24	18	114
L29+00S 1+50E	< 5	0.1	20	12	84
L29+00S 2+00E	<10	0.1	16	10	68
L29+00S 2+50E	<75	0.2	18	5	108
L29+00S 3+00E	<10	0.1	34	17	116
L29+00S 3+50E	<20	0.1	24	24	92
L29+00S 4+00E	< 5	0.3	6	8	86
L29+00S 4+50E	< 5	0.3	8	15	58
L29+00S 5+00E	< 5	0.1	20	23	96
L29+00S 5+50E	< 5	0.1	10	11	76
L29+00S 6+00E	< 5	0.1	10	17	102
L29+00S 6+50E	< 5	0.1	12	17	102
L30+00S 5+00W	< 5	0.1	4	5	38
L30+00S 4+50W	< 5	0.1	6	4	60
L30+00S 4+00W	< 5	0.4	26	15	74
L30+00S 3+50W	< 5	0.1	8	10	68
L30+00S 3+00W	< 5	0.1	10	10	50
L30+00S 2+50W	< 5	0.1	8	6	44

Duncan Anderson

CDN RESOURCE LABORATORIES LTD.

6329 BERESFORD STREET, BURNABY, B.C. V5E 1B3 / PH: 435-8376 / FAX: 435-9746

GEOCHEMICAL REPORT

To: **Energex Minerals Ltd.**
 2500 - 555 West Hastings
 P.O. Box 12052
 Vancouver, B.C., V6B 4N5

Number: **88382**
 Date: **August 15, 1988**
 Proj.: **Tour/Furlong**

Attn: **A. O. Birkeland**

	Au ppb	Ag ppm	Cu ppm	Pb ppm	Zn ppm
L30+00S 2+00W	< 5	0.1	6	6	38
L30+00S 1+50W	< 5	0.2	10	8	60
L30+00S 1+00W	< 5	1.2	20	13	78
L30+00S 0+50W	< 5	0.7	22	.9	82
L30+00S 0+00	< 5	0.4	22	12	112
L30+00S 0+50E	< 10	0.6	10	7	80
L30+00S 1+00E	< 5	0.2	10	5	42
L30+00S 1+50E	< 5	0.1	10	6	62
L30+00S 2+00E	< 5	0.1	10	4	54
L30+00S 2+50E	< 5	0.2	10	6	84
L30+00S 3+00E	< 5	0.4	12	7	72
L30+00S 3+50E	< 5	0.3	34	11	142
L30+00S 4+00E	< 5	0.4	8	20	64
L30+00S 4+50E	< 5	0.1	10	10	62
L30+00S 5+00E	< 5	0.3	8	15	76
L30+00S 5+50E	< 5	0.1	14	10	96
L30+00S 6+00E	< 5	0.1	10	14	142

Duncan Anderson

APPENDIX 3
- ANALYTICAL PROCEDURES -

ASSAY PROCEDURES

Sample preparation

Rocks: sample is crushed, riffled to give approximately 250g, ring pulverized to approximately -100 mesh.

Soils: sample is dried then sieved through -80 mesh screen.

Analytical procedures

Assay:

Au, Ag - fire assay, gravimetric finish on 20g sample.

Cu, Pb, Zn - a 1.00g sample is digested in 10 ml nitric acid and 25 ml hydrochloric acid for about one hour and then taken to dryness. It is taken up in 25 ml hydrochloric acid, bulked to 100 ml with distilled water, then presented to the AA.

Geochem:

Au - a 15g sample is inquarted and fire assayed. The prill is parted in a test tube with 0.5 ml nitric acid. The gold is taken into solution with the addition of 1.5 ml hydrochloric acid. Sample is bulked to 5.0 ml with distilled water, then presented to AA.

Ag, Cu, Pb, Zn - a 0.5g sample is ashed then transferred to a test tube. Sample is digested with 1.0 ml nitric acid and 2.0 ml hydrochloric acid in a hot water bath for two hours. Sample is bulked to 10.0 ml with distilled water and presented to AA.

MIN-EN Laboratories Ltd.

Specialists in Mineral Environments

Corner 15th Street and Bewicke
705 WEST 15TH STREET
NORTH VANCOUVER, B.C.
CANADA V7M 1T2

FIRE GOLD GEOCHEMICAL ANALYSIS BY MIN-EN LABORATORIES LTD.

Geochemical samples for Fire Gold processed by Min-En Laboratories Ltd., at 705 W. 15th St., North Vancouver Laboratory employing the following procedures.

After drying the samples at 95°C soil and stream sediment samples are screened by 80 mesh sieve to obtain the minus 80 mesh fraction for analysis. The rock samples are crushed and pulverized by ceramic plated pulverizer.

A suitable sample weight 15.00 or 30.00 grams are fire assay preconcentrated.

After pretreatments the samples are digested with Aqua Regia solution, and after digestion the samples are taken up with 25% HCl to suitable volume.

Further oxidation and treatment of at least 75% of the original sample solutions are made suitable for extraction of gold with Methyl Iso-Butyl Ketone.

With a set of suitable standard solution gold is analysed by Atomic Absorption instruments. The obtained detection limit is 1 ppb.

*MIN-EN Laboratories Ltd.**Specialists in Mineral Environments*Corner 15th Street and Bewicke
705 WEST 15th STREET
NORTH VANCOUVER, B.C.
CANADAANALYTICAL PROCEDURE REPORTS FOR ASSESSMENT WORK.PROCEDURES FOR, Cu, Mo, Cd, Pb, Mn, Ni, Ag, Zn.

Samples are processed by Min-En Laboratories Ltd. at 705 W. 15th St., North Vancouver Laboratory employing the following procedures.

After drying the samples at 95°C soil and stream sediment samples are screened by 80 mesh sieve to obtain the minus 80 mesh fraction for analysis. The rock samples are crushed by jaw crusher and pulverized by ceramic plated pulverizer.

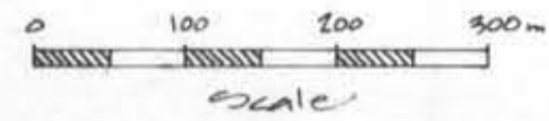
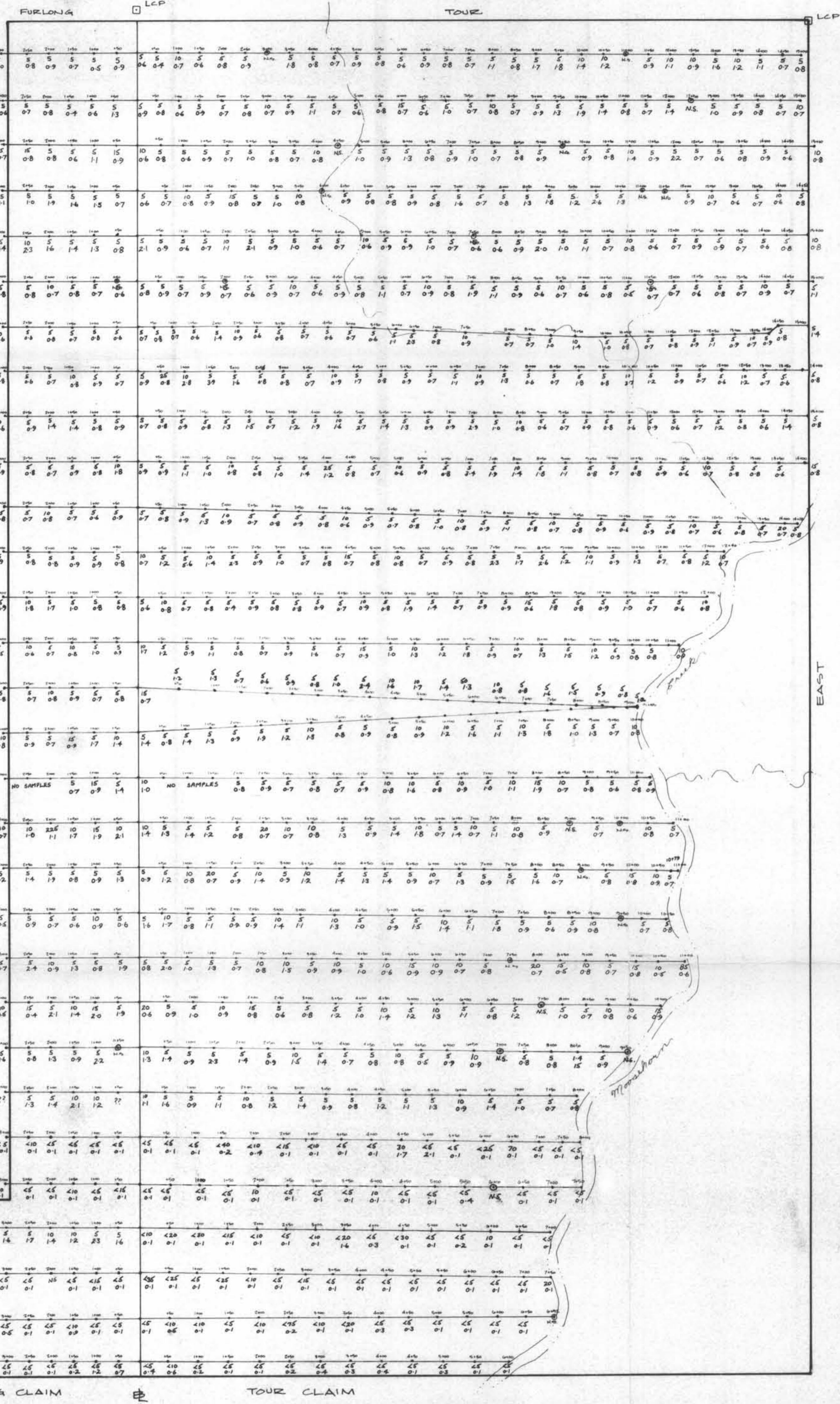
1.0 gram of the samples are digested for 6 hours with HNO_3 and HClO_4 mixture.

After cooling samples are diluted to standard volume. The solutions are analysed by Atomic Absorption Spectrophotometers.

Copper, lead, zinc, silver, cadmium, cobalt, nickel and manganese are analysed using the CH_2H_2 -Air flame combination but the molybdenum determination is carried out by C_2H_2 - N_2O gas mixture directly or indirectly (depending on the sensitivity and detection limit required) on these sample solutions.

Background corrections for Pb, Ag, Cd upon request are completed.

Baseline



N

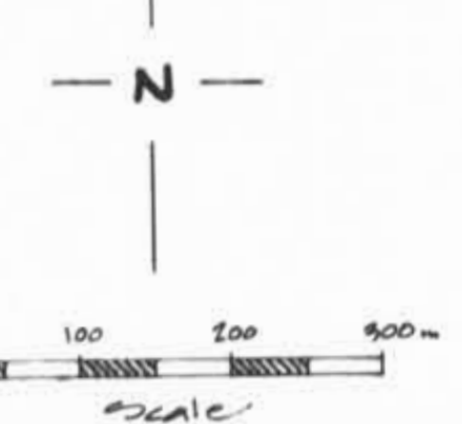
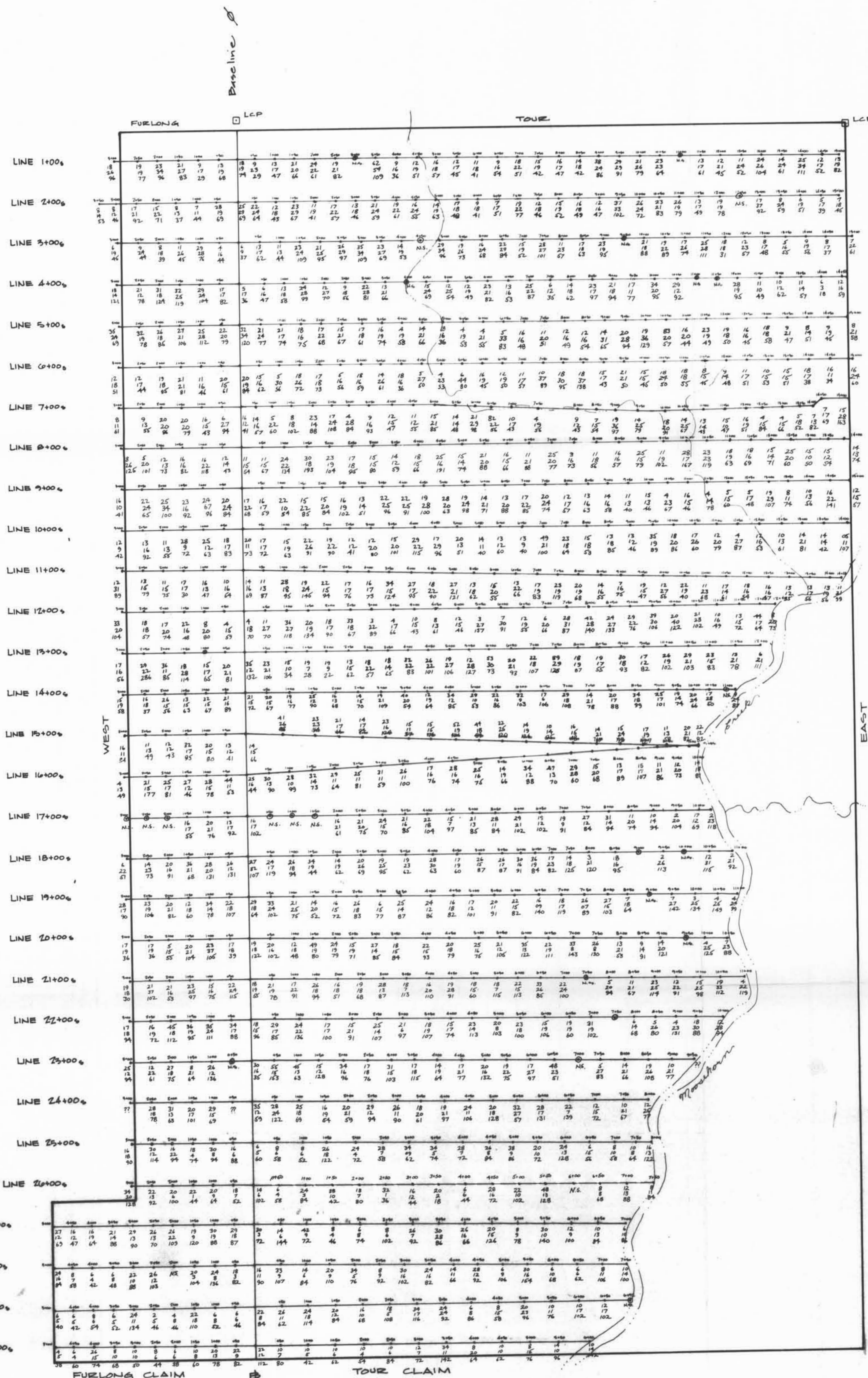
EXPLANATION

- Sample Location with number
- No sample
- Surveyed Line (by SILVA and nylon tape with no slope correction!!)
- Baseline
- Creek
- Legal Corner Post

GEOLOGICAL BRANCH ASSESSMENT REPORT

17,939

Date	By	Description
REVISIONS		
ENERGEX ENERGEX MINERALS LTD.		
FURLONG & TOUR CLAIMS		
SOIL SAMPLE LOCATION MAP		
Au & Ag RESULTS		
Scale 1:5000		
Date July 88	Author LKE	FIGURE No. 2A
Drawn by TJD	N.T.S.	INDEX No. 16000



- EXPLANATION**
- Sample Location with number
 - No sample
 - Surveyed Line
 - Baseline
 - ~ Creek
 - Legal Corner Post

2+00	2+50
6 CU	20 copper ppm
6 Pb	75 lead ppm
50 Zn	78 zinc ppm

GEOLOGICAL BRANCH ASSESSMENT REPORT

17,939

Date	By	Description
REVISIONS		
ENERGEX <small>ENERGEX MINERALS LTD. Suite 200, 151 W. Hastings St. Vancouver, B.C. V6B 4N5</small>		
FURLONG & TOUR CLAIMS		
SOIL SAMPLE LOCATION MAP		
Cu, Pb & Zn RESULTS		
Scale: 1:5000		
Drawn by: GCB	Author: LEP	FIGURE No: 3B
Checked by: H.T.S.	INDEX No:	