

MineQuest Report # 208  
Ref. No. RM5102

VOLUME 3

FILMED

GEOLOGY, GEOCHEMISTRY, GEOPHYSICS AND DIAMOND DRILLING  
on the  
PDL PROPERTY

VOLUME 3  
(Maps only)

Osoyoos Mining Division

N.T.S. 82E/5W

Latitude 49° 22' N  
Longitude 119° 48' W

by  
Linda J. Lee  
of  
MineQuest Exploration Associates Ltd.

for  
OPX Minerals Inc.

18,251

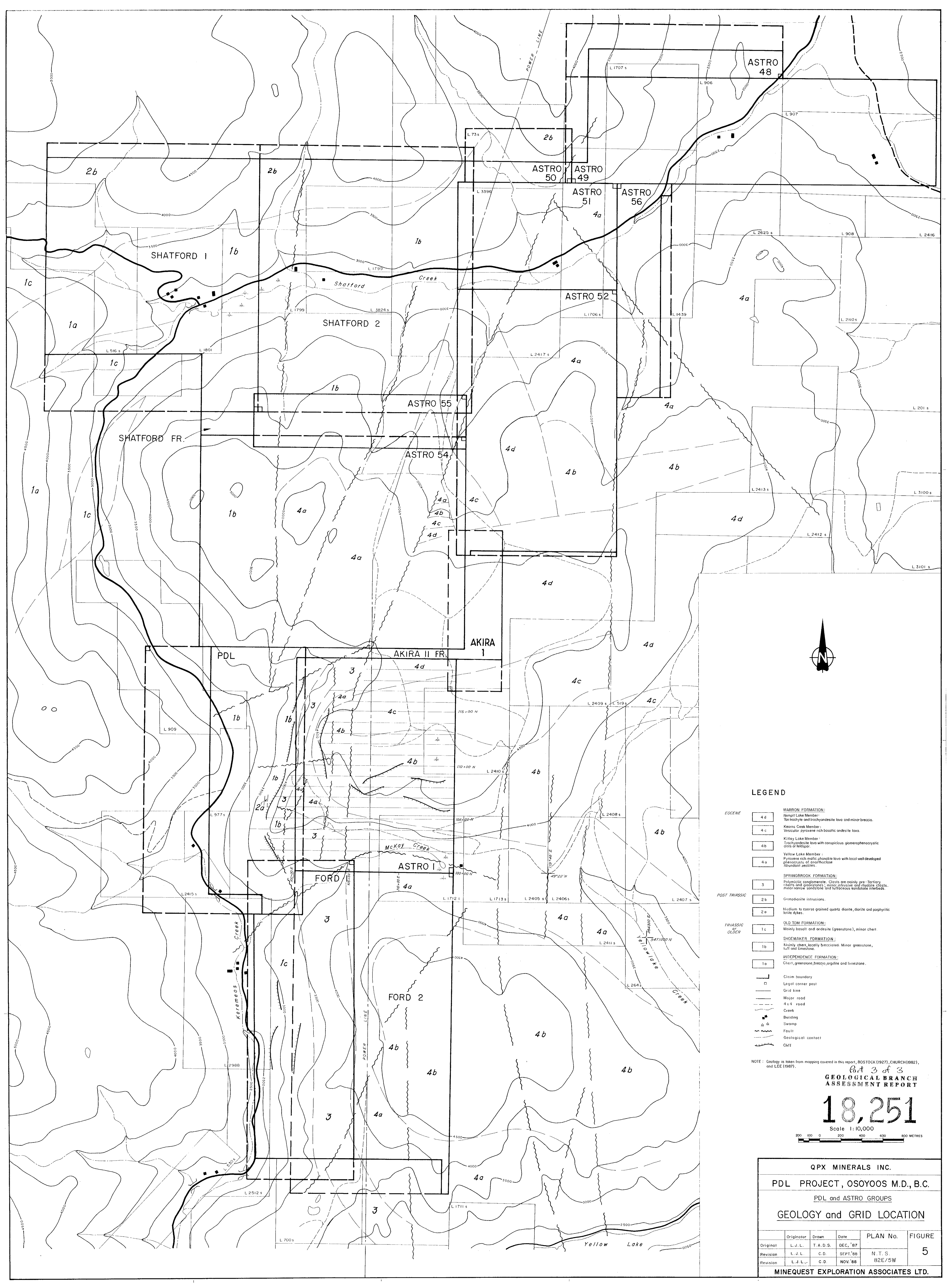
GEOLOGICAL BRANCH  
ASSESSMENT REPORT

Part 3 of 3

| <u>Claim Name</u>   | <u>Record Number</u> | <u>Number of Units</u> | <u>Record Date</u> |
|---------------------|----------------------|------------------------|--------------------|
| <u>PDL Group</u>    |                      |                        |                    |
| Ford 1              | 2639                 | 14                     | 05 July 1987       |
| PDL                 | 1963                 | 15                     | 23 Dec. 1983       |
| Astro 54            | 618                  | 20                     | 05 Jan. 1979       |
| Astro 55            | 619                  | 4                      | 05 Jan. 1979       |
| Shatford Fr         | 2758                 | 1                      | 09 Nov. 1987       |
| Shatford 1          | 2756                 | 20                     | 09 Nov. 1987       |
| <u>Astro Group</u>  |                      |                        |                    |
| Ford 2              | 3002                 | 18                     | 02 Sept 1988       |
| Akira I             | 2912                 | 3                      | 14 June 1988       |
| Akira II Fr         | 2913                 | 1                      | 14 June 1988       |
| Astro I             | 213                  | 12                     | 09 Mar. 1977       |
| Astro 48            | 612                  | 4                      | 05 Jan. 1979       |
| Astro 49            | 613                  | 14                     | 05 Jan. 1979       |
| Astro 50            | 614                  | 2                      | 05 Jan. 1979       |
| Astro 51            | 615                  | 6                      | 05 Jan. 1979       |
| Astro 52            | 616                  | 15                     | 05 Jan. 1979       |
| Astro 56            | 620                  | 4                      | 05 Jan. 1979       |
| Shatford 2          | 2757                 | 20                     | 09 Nov. 1987       |
| <u>Olalla Group</u> |                      |                        |                    |
| Olalla 1            | 2754                 | 18                     | 09 Nov. 1987       |
| Olalla 2            | 2755                 | 18                     | 09 Nov. 1987       |

Vancouver, B.C.

December, 1988



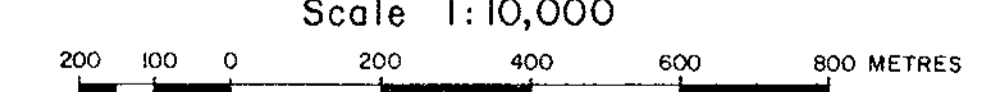
**LEGEND**

- Eocene**
- 4d MARRON FORMATION: Nampit Lake Member: Tuffaceous and andesite lava and minor breccia.
  - 4c Keans Creek Member: Vesicular pyroxene rich basaltic andesite lava.
  - 4b Kitley Lake Member: Tuffaceous lava with conspicuous goniatitiferous chert and fossiliferous.
  - 4a Yellow Lake Member: Pyroxene rich mafic phonolite lava with local well developed phenocrysts of anorthoclase. Abundant zeolites.
- POST TRIASSIC**
- 3 SPRINGBROOK FORMATION: Polymictic conglomerate. Clasts are mainly pre-Tertiary chert and greenstones; minor intrusive and flysch clasts; minor narrow sandstone and tuffaceous sandstone interbeds.
  - 2b Gneissite intrusions.
  - 2a Medium to coarse grained quartz diorite, diorite and porphyritic tuffic dykes.
- TRIASSIC OR OLDER**
- 1c OLD TOM FORMATION: Mainly basalt and andesite (greenstone), minor chert.
  - 1b SHOEMAKER FORMATION: Mainly chert, locally brecciated. Minor greenstone, tuff and limestone.
  - 1a INDEPENDENCE FORMATION: Chert, greenstone, breccia, argillite and limestone.
- [---] Claim boundary  
 [□] Legal corner post  
 [---] Grid line  
 [---] Major road  
 [---] 4 x 4 road  
 [---] Creek  
 [■] Building  
 [---] Swamp  
 [---] Fault  
 [---] Geological contact  
 [---] Cliff

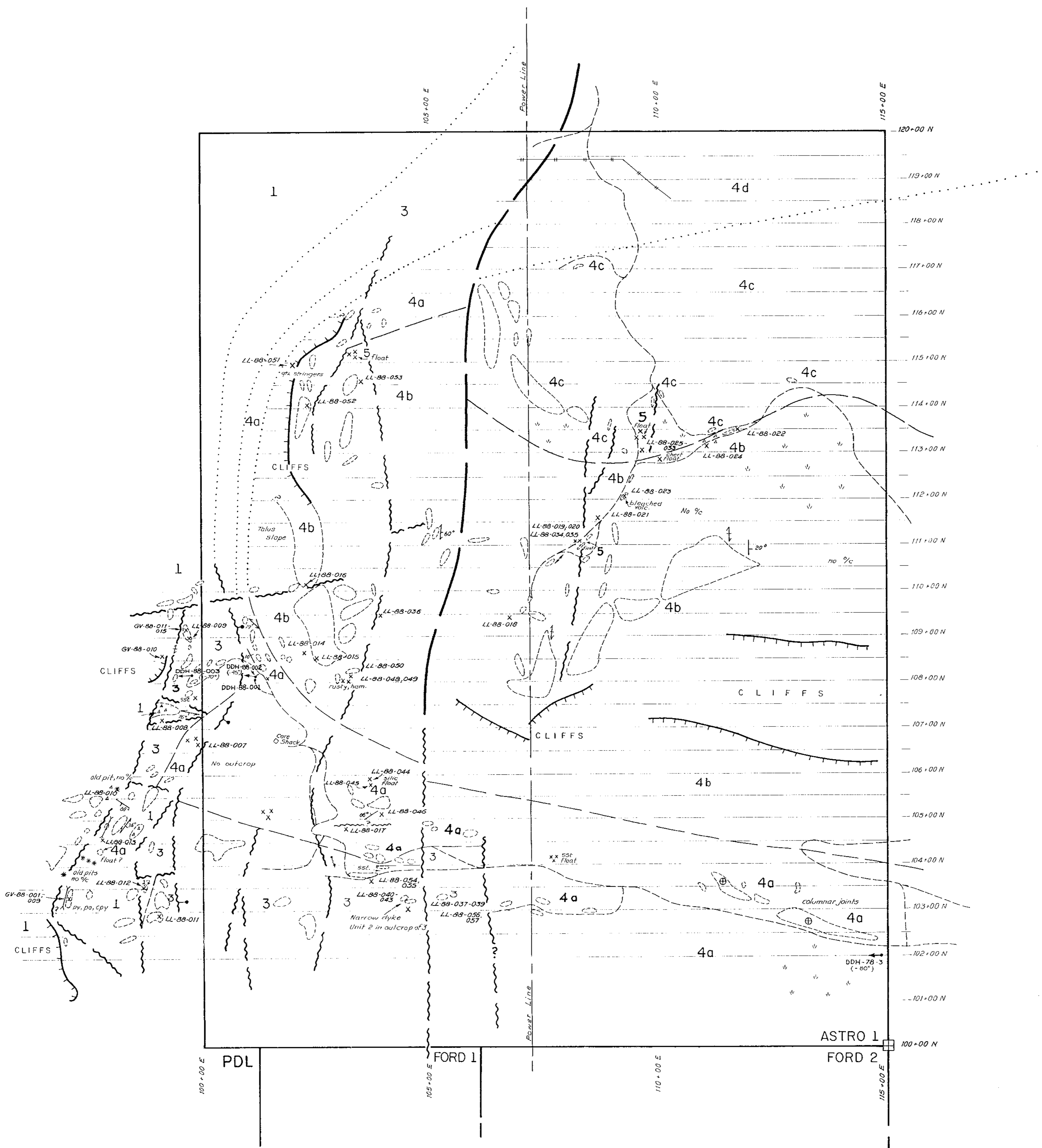
NOTE: Geology is taken from mapping covered in this report, ROSTOCK (1927), CHURCH (1982), and LEE (1987).

Part 3 of 3  
**GEOLOGICAL BRANCH**  
**ASSESSMENT REPORT**

**18,251**  
 Scale 1:10,000



|                                       |             |          |           |          |  |
|---------------------------------------|-------------|----------|-----------|----------|--|
| QPX MINERALS INC.                     |             |          |           |          |  |
| PDL PROJECT, OSOYOOS M.D., B.C.       |             |          |           |          |  |
| PDL and ASTRO GROUPS                  |             |          |           |          |  |
| GEOLOGY and GRID LOCATION             |             |          |           |          |  |
| Originator                            | Drawn       | Date     | PLAN No.  | FIGURE   |  |
| L. J. L.                              | T. A. D. S. | DEC, '87 |           | 5        |  |
| Revision                              | L. J. L.    | C. D.    | SEPT. '88 | N. T. S. |  |
| Revision                              | L. J. L.    | C. D.    | NOV. '88  | 82E/SW   |  |
| MINEQUEST EXPLORATION ASSOCIATES LTD. |             |          |           |          |  |

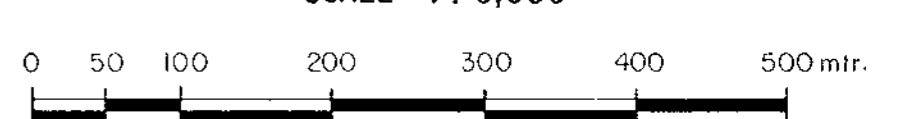


**Legend**

- POST EOCENE (age uncertain)** 5 Polymictic conglomerate of uncertain origin, possibly fault related. Composed of subround pebbles and rare boulders of units 1, 2 and 4 in a fine matrix with 5% rounded quartz pebbles, 2% euhedral biotite and rare pyroxene crystals.
- EOCENE**
- Marron Formation:**
- 4d Nimpit Lake Member: Tan trachyte and trachyandesite lava and minor breccia
  - 4c Kearns Creek Member: Vesicular pyroxene-rich basaltic andesite lava
  - 4b Kitley Lake Member: Trachyandesite lava with conspicuous glomerophenocrystic clots of feldspar
  - 4a Yellow Lake Member: Pyroxene rich mafic phonitic lava with local well developed phenocrysts of orthoclase. Abundant relictites.
- Springbrook Formation:**
- 3 Polymictic conglomerate. Clasts are mainly pre-Tertiary cherts and greenstones; minor intrusive and rhyolite clasts. Minor narrow sandstone and lutefaceous sandstone interbeds.
  - 2 Medium to coarse grained quartz diorite, diorite or porphyritic latite dykes.
- POST TRIASSIC (age uncertain)**
- Shoemaker Formation:**
- 1 Silty cherts, locally brecciated, minor greenstone, limestone and tuffs.
- TRIASSIC OR OLDER**
- SYMBOLS**
- Clam boundary
  - Grid line
  - Fault, down-dropped side
  - Road
  - Swamp
  - Rock sample location
  - Diamond 2-hole
  - Power line
  - Barbed wire fence
  - Geologic contact: mapped from Church, (1982)
  - Regional fault (from Church, 1982)
  - Outcrop boundary
  - Spring
  - Trench
  - Test Pit
  - Cliffs
  - Strike/dip of bedding, horizontal bedding
  - Strike/dip of fault, fracture
  - Flood
  - Brecciate
  - Glacial striation
- ABBREVIATIONS**
- qtz Quartz
  - px Pyroxite
  - py Pyrite
  - cpy Chalcopyrite
  - stc Sandstone
  - hem Hematite
  - o/c Outcrop
  - silic Silicified

Part 3 of 3  
GEOLOGICAL BRANCH  
ASSESSMENT REPORT

18,251  
SCALE 1:5,000

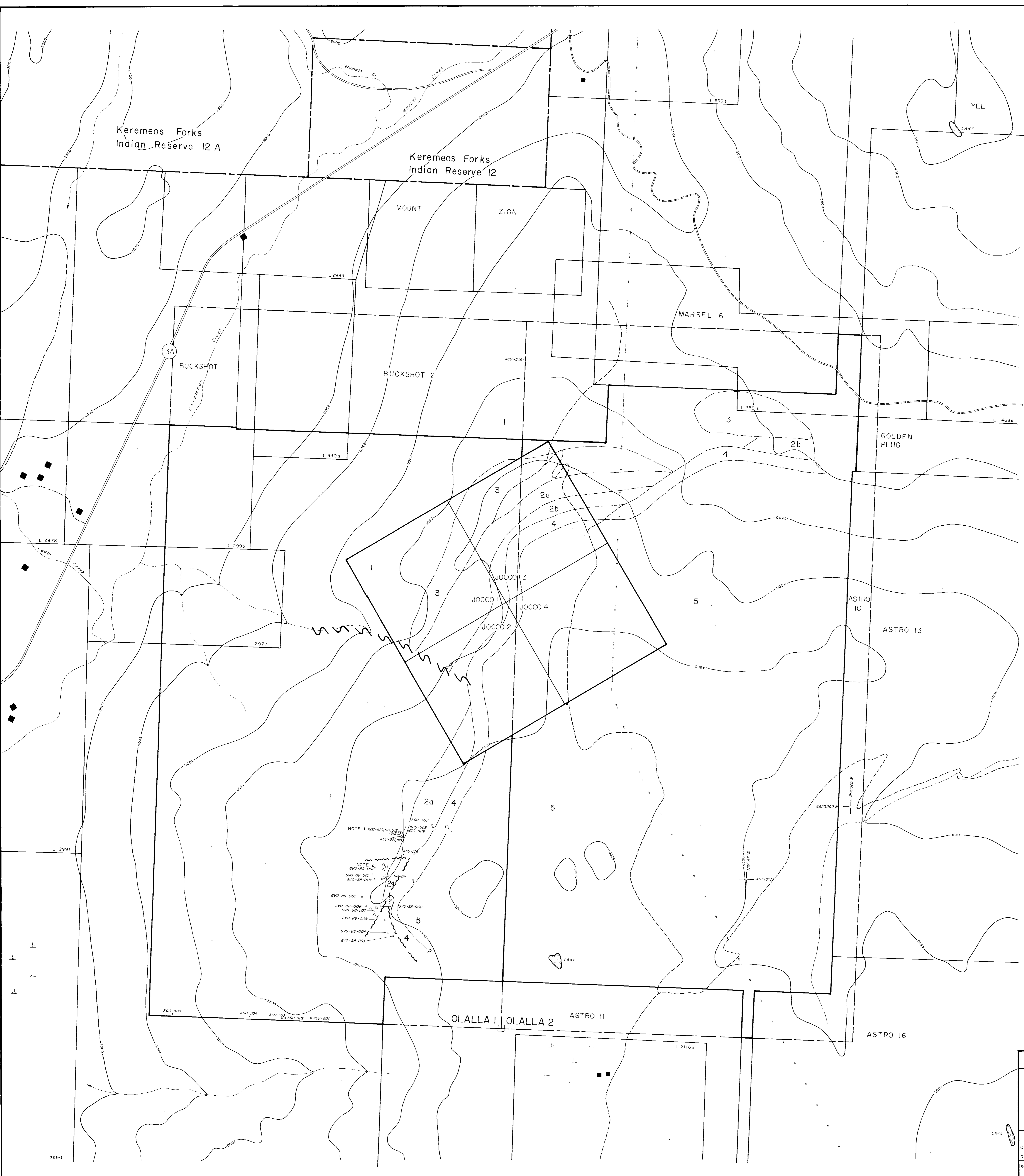
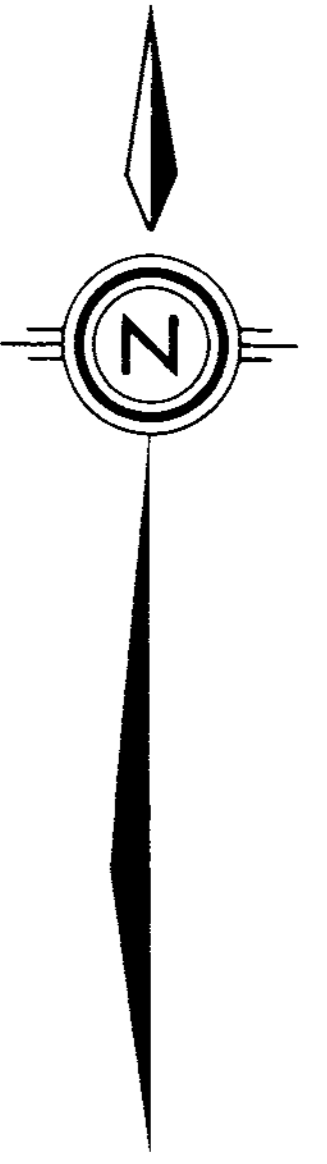


QPX MINERALS INC.  
PDL PROPERTY, OSOYOOS M.D., B.C.

**GRID GEOLOGY and  
ROCK SAMPLE LOCATIONS**

| Original | Originator | Drawn | Date      | PLAN   | Figure |
|----------|------------|-------|-----------|--------|--------|
| Revision | L. J. L.   | C. D. | Oct. 1988 | 1355   | 6      |
| Revision |            |       |           | N.T.S. |        |
| Revision |            |       |           | 82E/5W |        |

MINEQUEST EXPLORATION ASSOCIATES LTD.



**LEGEND**

- HIGHWAY
  - MAJOR GRAVEL ROAD
  - 4 WHEEL DRIVE ROAD
  - CREEK
  - LAKE
  - SWAMP
  - CLAIM BOUNDARY
  - LEGAL CORNER POST
  - POWER LINE
  - APPROXIMATE GEOLOGICAL CONTACT
  - FAULT
  - ROCK SAMPLE LOCATION
  - BRECCIA
- Tertiary **5** Marron Formation - phonolites and trachytes.
- 4** Springbrook Formation - mainly conglomerate.
- Post Triassic **3** Dacite or rhyolite dike complex.
- Upper Triassic **2b** Lime matrix grits and breccia.
- 2a** Limestone, locally brecciated or siliceous.
- Triassic or Older **1** Old Tom Formation - chert and chert breccia, locally pyritic.

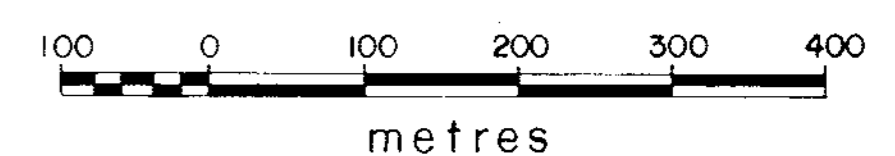
Note 1: Two old prospector pits expose pyrrhotite lenses at this point.

Note 2: A pyrrhotite matrix breccia is reputed to be located at this point.

GEOLOGY TAKEN IN PART FROM CULBERT (1978, 1979)

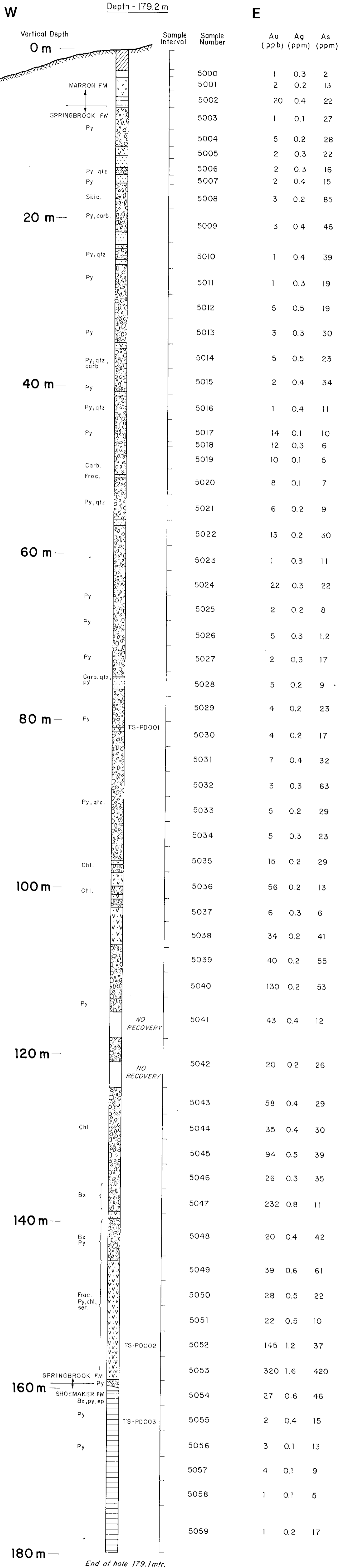
Part 3 of 3  
**GEOLOGICAL BRANCH  
ASSESSMENT REPORT**

**18,251**  
Scale 1: 5000



|                                       |            |          |          |          |        |
|---------------------------------------|------------|----------|----------|----------|--------|
| QPX MINERALS INC.                     |            |          |          |          |        |
| PDL PROJECT-OSOYOOS M.D., B.C.        |            |          |          |          |        |
| OLALLA GROUP                          |            |          |          |          |        |
| GEOLOGY and                           |            |          |          |          |        |
| ROCK SAMPLE LOCATIONS                 |            |          |          |          |        |
| Original                              | Originator | Drawn    | Date     | PLAN No. | FIGURE |
|                                       | L.J.L.     | T.A.D.S. | Nov, '87 | 1356     | 7      |
| Revision                              |            |          |          | N.T.S.   |        |
| Revision                              |            |          |          | 82 E / 5 |        |
| MINEQUEST EXPLORATION ASSOCIATES LTD. |            |          |          |          |        |

DDH-88-001  
- 90°



LEGEND

- Overburden
- MARRON FORMATION - Yellow Lake Member**
  - Pyroxene rich mafic phonolite lava.
  - Arkosic grit and tuffaceous sandstone, locally grading to fine conglomerate. Commonly contains narrow coal seams.
- SPRINGBROOK FORMATION**
  - Polymictic pebble to boulder conglomerate with clasts composed mainly of pre-Tertiary cherts and greenstones, but also of rhyolite, feldspar porphyry and hornfels. Matrix is locally tuffaceous, commonly contains narrow interbeds of sandstone. Pyrite is common in clasts and matrix of conglomerate.
  - Brown to grey sandstone with complete gradation from fine sandstone to pebble conglomerate. Vague horizontal bedding common.
  - Fine grained crystal tuff to tuffaceous sandstone. Pale grey to greenish grey.
- POST TRIASSIC**
  - Porphyritic lotite dyke or extrusive volcanic.
- SHOEMAKER FORMATION**
  - Pale to dark grey chert, locally brecciated. Commonly contains minor pyrite.
  - Brown to maroon rhyolite with well developed flow banding. Locally brecciated. Age uncertain.

ABBREVIATIONS

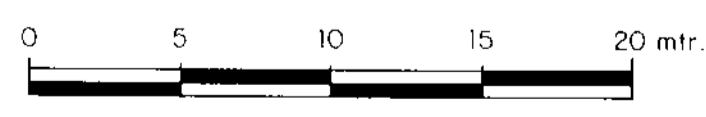
|                                |                     |                     |
|--------------------------------|---------------------|---------------------|
| TS PD001 - thin section sample | Chl                 | chlorite alteration |
| Py                             | pyrite              | silicification      |
| Qtz                            | quartz stringers    | brecciation         |
| Carb.                          | carbonate stringers | fracturing          |
| Ep                             | epidote             | sericite            |

Part 3 of 3  
GEOLOGICAL BRANCH  
ASSESSMENT REPORT

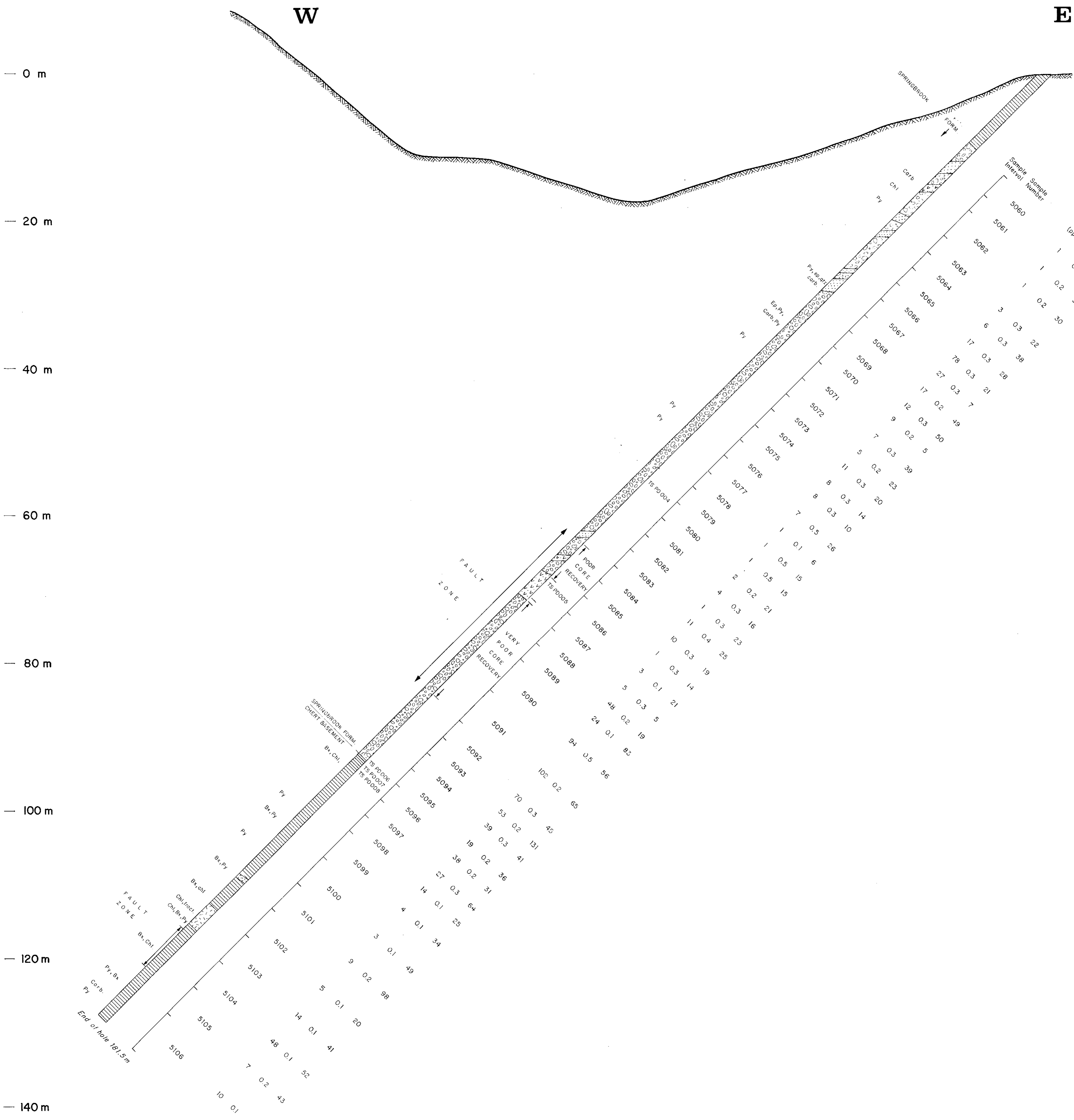
Section facing North

18,251

SCALE: 1 = 250



|                                       |            |        |      |                  |                     |
|---------------------------------------|------------|--------|------|------------------|---------------------|
| <b>QPX MINERALS INC.</b>              |            |        |      |                  |                     |
| PDL PROPERTY, OSOY00S M.D., B.C.      |            |        |      |                  |                     |
| <b>DDH-88-001<br/>DRILL SECTION</b>   |            |        |      |                  |                     |
|                                       | Originator | Drawn  | Date | PLAN NO.<br>1357 | <b>FIGURE<br/>9</b> |
|                                       | Original   | L.J.L. | C.D. | N.T.S.           |                     |
|                                       | Revision   |        |      | 82 E / 5W        |                     |
| MINEQUEST EXPLORATION ASSOCIATES LTD. |            |        |      |                  |                     |



DDH-88-002  
 280° / 45°  
 Depth - 101.5 m

0 m  
 20 m  
 40 m  
 60 m  
 80 m  
 100 m  
 120 m  
 140 m

| Sample Interval | Sample Number | Au (ppm) | Ag (ppm) | As (ppm) |
|-----------------|---------------|----------|----------|----------|
| 5060            | 1             | 0.3      | 32       |          |
| 5061            | 1             | 0.2      | 33       |          |
| 5062            | 1             | 0.2      | 30       |          |
| 5063            | 3             | 0.3      | 22       |          |
| 5064            | 6             | 0.3      | 38       |          |
| 5065            | 17            | 0.3      | 21       |          |
| 5066            | 27            | 0.3      | 7        |          |
| 5067            | 12            | 0.2      | 48       |          |
| 5068            | 9             | 0.3      | 50       |          |
| 5069            | 7             | 0.2      | 5        |          |
| 5070            | 5             | 0.2      | 39       |          |
| 5071            | 11            | 0.3      | 23       |          |
| 5072            | 8             | 0.3      | 20       |          |
| 5073            | 7             | 0.5      | 10       |          |
| 5074            | 1             | 0.1      | 26       |          |
| 5075            | 2             | 0.5      | 15       |          |
| 5076            | 4             | 0.3      | 21       |          |
| 5077            | 11            | 0.4      | 16       |          |
| 5078            | 10            | 0.3      | 23       |          |
| 5079            | 3             | 0.1      | 14       |          |
| 5080            | 5             | 0.3      | 5        |          |
| 5081            | 48            | 0.2      | 19       |          |
| 5082            | 24            | 0.1      | 83       |          |
| 5083            | 94            | 0.5      | 56       |          |
| 5084            | 70            | 0.3      | 45       |          |
| 5085            | 53            | 0.2      | 131      |          |
| 5086            | 39            | 0.3      | 41       |          |
| 5087            | 19            | 0.2      | 36       |          |
| 5088            | 38            | 0.2      | 31       |          |
| 5089            | 27            | 0.5      | 64       |          |
| 5090            | 14            | 0.1      | 25       |          |
| 5091            | 4             | 0.1      | 34       |          |
| 5092            | 3             | 0.1      | 49       |          |
| 5093            | 9             | 0.2      | 98       |          |
| 5094            | 5             | 0.1      | 20       |          |
| 5095            | 14            | 0.1      | 41       |          |
| 5096            | 48            | 0.1      | 52       |          |
| 5097            | 7             | 0.2      | 43       |          |
| 5098            | 10            | 0.1      | 19       |          |

**LEGEND**

- Overburden
- MARRON FORMATION - Yellow Lake Member**
  - Pyroxene rich mafic phonolite lava.
  - Arctic grit and tuffaceous sandstone, locally grading to fine conglomerate. Commonly contains narrow coal seams.
- SPRINGBROOK FORMATION**
  - Pebble to boulder conglomerate with clasts composed mainly of pre-Tertiary cherts and greenstones, but also of rhyolite, feldspar porphyry and hornfels. Matrix is locally tuffaceous, commonly contains narrow interbeds of sandstone. Pyrite is common in clasts and matrix of conglomerate.
  - Brown to grey sandstone with complete gradation from fine sandstone to pebble conglomerate. Vague horizontal bedding common.
  - Fine grained crystal tuff to tuffaceous sandstone. Pale grey to greenish grey.
- POST TRIASSIC**
  - Porphyritic latite dike or extrusive volcanic
- SHOEMAKER FORMATION**
  - Pale to dark grey chert, locally brecciated. Commonly contains minor pyrite.
  - Brown to maroon rhyolite with well developed flow banding. Locally brecciated. Age uncertain.

**ABBREVIATIONS**

|      |      |                     |       |                     |
|------|------|---------------------|-------|---------------------|
| TS   | PDDO | thin section sample | Chl   | chlorite alteration |
| Py   |      | pyrite              | Silic | silicification      |
| Qtz  |      | quartz stringers    | Sch   | schistosity         |
| Corb |      | carbonate stringers | Frac  | fracturing          |
| Ep   |      | epidote             | Ser   | sericite            |

Part 3 of 3  
 GEOLOGICAL BRANCH  
 ASSESSMENT REPORT

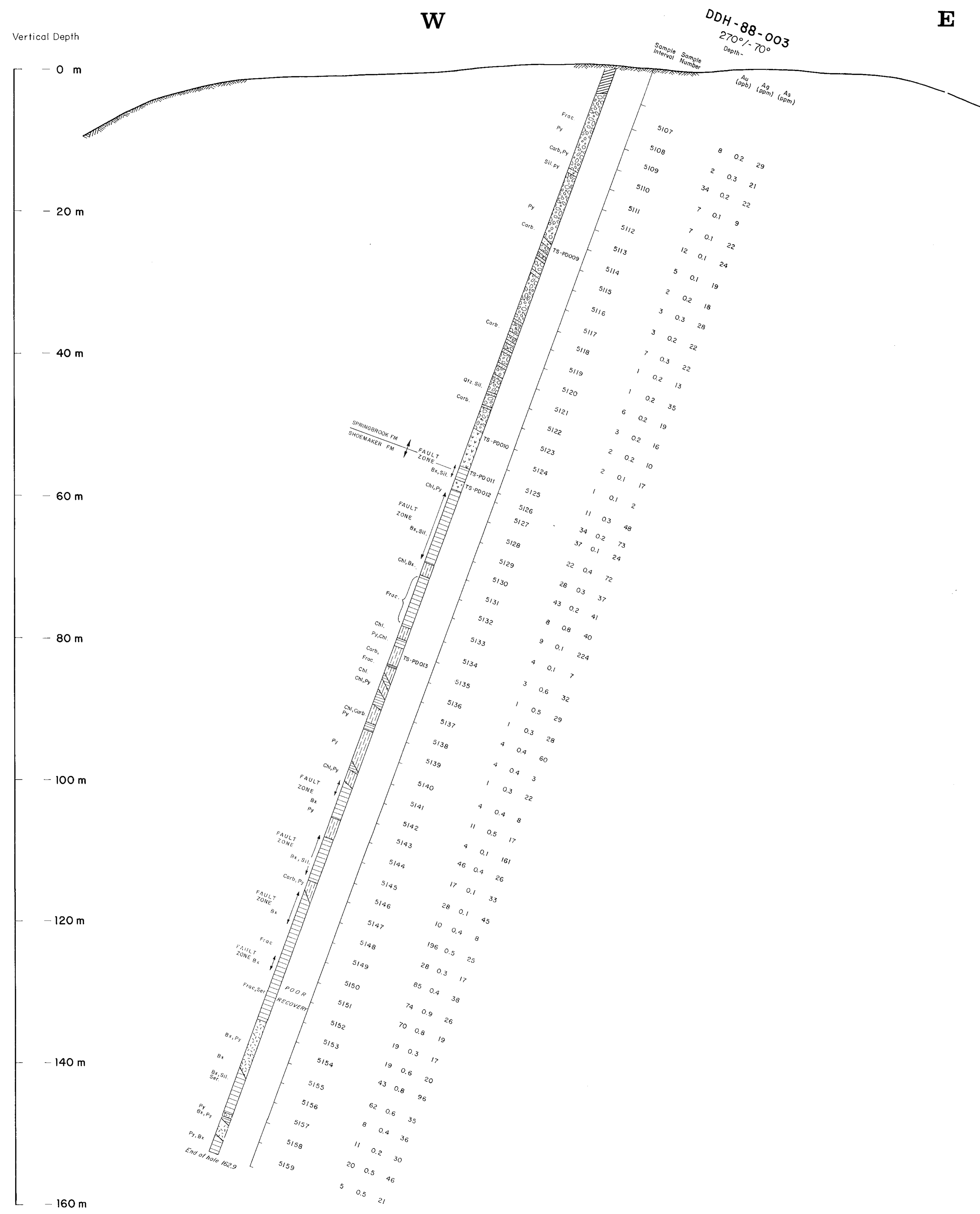
**18,251**

SECTION ON AZIMUTH 280°, FACING NORTH

SCALE: 1 = 250



|                                       |       |         |          |        |
|---------------------------------------|-------|---------|----------|--------|
| <b>QPX MINERALS INC.</b>              |       |         |          |        |
| PDL PROPERTY, OSOYOOS M.D., B.C.      |       |         |          |        |
| <b>DDH-88-002<br/>DRILL SECTION</b>   |       |         |          |        |
| Originator                            | Drawn | Date    | PLAN NO. | FIGURE |
| L.J.L.                                | C.D.  | Nov '88 | 1358     | 10     |
| Revision                              |       |         | N.T.S.   |        |
| Revision                              |       |         | 82E / 5W |        |
| MINEQUEST EXPLORATION ASSOCIATES LTD. |       |         |          |        |



DDH-88-003  
270°/-70°  
Depth -

Part 3 of 3  
GEOLOGICAL BRANCH  
ASSESSMENT REPORT  
**18,251**

**LEGEND**

- Overburden
- MARRON FORMATION - Yellow Lake Member**
  - Pyroxene rich mafic phonolite lava.
  - Arkasic grit and tuffaceous sandstone, locally grading to fine conglomerate. Commonly contains narrow coal seams.
- SPRINGBROOK FORMATION**
  - Polymictic pebble to boulder conglomerate with clasts composed mainly of pre-Tertiary cherts and gneissites, but also of rhyolite, teldspar porphyry and hornfels. Matrix is locally tuffaceous, commonly contains narrow interbeds of sandstone. Pyrite is common in clasts and matrix of conglomerate.
  - Brown to grey sandstone with complete gradation from fine sandstones to pebbly conglomerate. Vague horizontal bedding common.
  - Fine grained crystal tuff to tuffaceous sandstone. Pale grey to greenish grey.
  - Porphyritic latite dyke or extrusive volcanic.
- SHOEMAKER FORMATION**
  - Pale to dark grey chert, locally brecciated. Commonly contains minor pyrite.
  - Dark green greenstone; strong chloritic alteration of probable microcline parent rock.
  - Brown to maroon rhyolite with well developed flow banding. Locally brecciated. Age uncertain.

**ABBREVIATIONS**

|          |                       |       |                      |
|----------|-----------------------|-------|----------------------|
| TS-PD001 | - this section sample | Chl   | chloritic alteration |
| Py       | pyrite                | Sil   | silicification       |
| Str      | quartz stringers      | Bx    | brecciation          |
| Carb     | carbonate stringers   | Frac. | fracturing           |
| Ep       | epidote               | Ser   | sericitic            |

**QPX MINERALS INC.**  
PDL PROPERTY, OSOYOOS M.D., B.C.

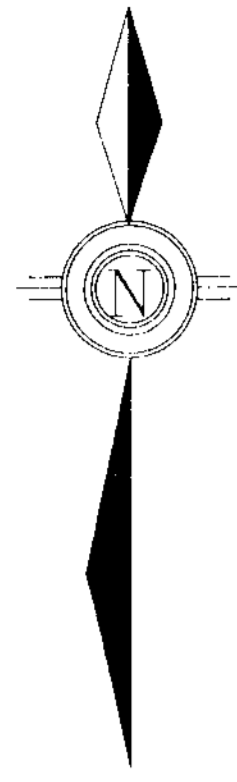
**DDH-88-003  
DRILL SECTION**

|          |        |      |         |               |           |
|----------|--------|------|---------|---------------|-----------|
| Original | L.J.L. | C.D. | Oct '88 | PLAN NO. 1359 | FIGURE 11 |
| Revision |        |      |         | N.T.S.        |           |
| Revision |        |      |         | 82E/5W        |           |

MINEQUEST EXPLORATION ASSOCIATES LTD.

SECTION ON AZIMUTH 270°, FACING NORTH

SCALE: 1 = 250  
0 5 10 15 20 mtr.



PDL

AKIRA II FR.

AKIRA I

120+00 N

119+00 N

118+00 N

117+00 N

116+00 N

115+00 N

114+00 N

113+00 N

112+00 N

111+00 N

110+00 N

109+00 N

108+00 N

107+00 N

105+00 N

105+00 N

104+00 N

103+00 N

102+00 N

97+00 E

98+00 E

99+00 E

100+00 E

101+00 E

102+00 E

103+00 E

104+00 E

105+00 E

106+00 E

107+00 E

108+00 E

109+00 E

110+00 E

111+00 E

112+00 E

113+00 E

114+00 E

115+00 E

116+00 E

117+00 E

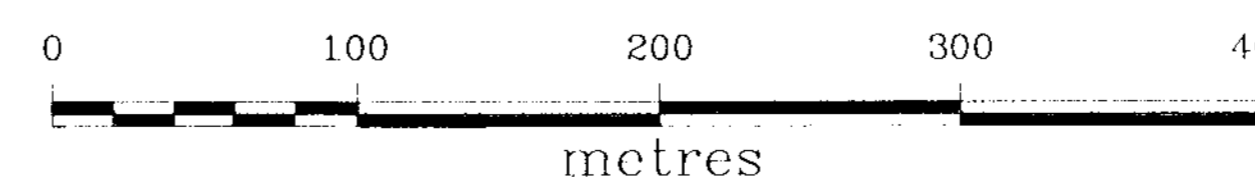
PDL

FORD 1

LEGEND  
 + < 6 ppb  
 \* 6 < 17 ppb  
 ○ > 17 < 29 ppb  
 ○ > 29 ppb

ASTRO 1  
FORD 2

SCALE 1:2500



Part 3 of 3  
GEOLOGICAL BRANCH  
ASSESSMENT REPORT

18,251

QPX MINERALS INC.

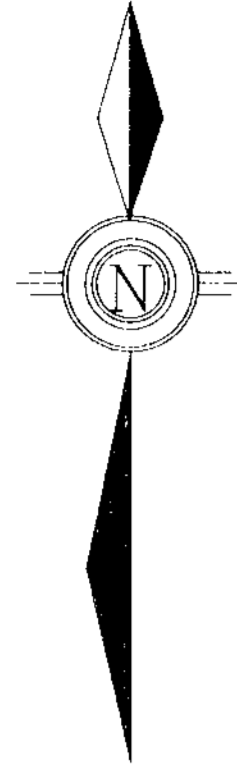
PDL PROPERTY, OSOYOOS M.D., B.C.

GRID SOIL GEOCHEMISTRY  
GOLD (ppb)

|          |            |          |          |          |        |
|----------|------------|----------|----------|----------|--------|
| Original | Originator | Drawn    | Date     | PLAN No. | FIGURE |
| Revision | LJL        | Geo-Comp | Sept. 88 | 1360     | 13     |
| Revision |            |          |          | N.T.S.   |        |
|          |            |          |          | 82E/5W   |        |

MINEQUEST EXPLORATION ASSOCIATES LTD.





PDL

AKIRA II FR

AKIRA I

120+00 N

119+00 N

118+00 N

117+00 N

116+00 N

115+00 N

114+00 N

113+00 N

112+00 N

111+00 N

110+00 N

109+00 N

108+00 N

107+00 N

105+00 N

105+00 N

104+00 N

103+00 N

102+00 N

97+00 E

98+00 E

99+00 E

100+00 E

101+00 E

102+00 E

103+00 E

104+00 E

105+00 E

106+00 E

107+00 E

108+00 E

109+00 E

110+00 E

111+00 E

112+00 E

113+00 E

114+00 E

115+00 E

116+00 E

117+00 E

PDL

FORD 1

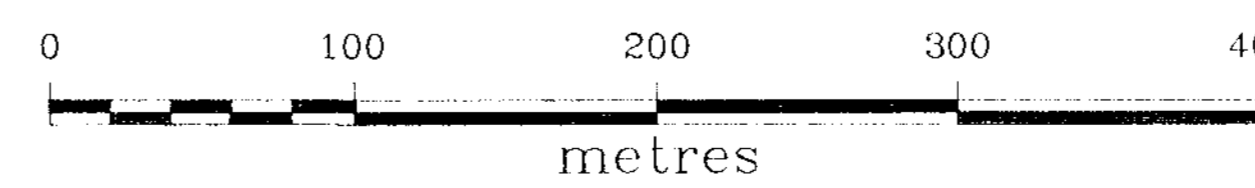
LEGEND

- < 7 ppm
- 7 < 13 ppm
- 13 < 18 ppm
- > 18 ppm

ASTRO 1

FORD 2

SCALE 1:2500



Part 3 of 3  
 GEOLOGICAL BRANCH  
 ASSESSMENT REPORT

18,251

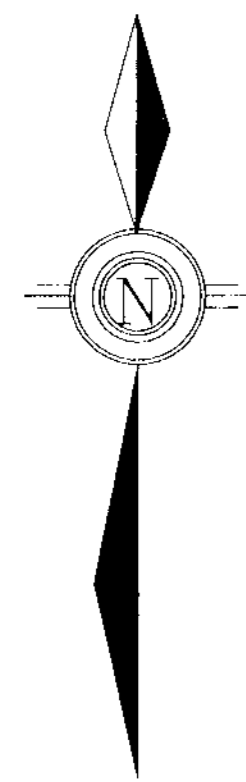
QPX MINERALS INC.

PDL PROPERTY, OSOYOOS M.D., B.C.

GRID SOIL GEOCHEMISTRY  
 ARSENIC (ppm)

|          | Originator | Drawn    | Date     | PLAN No. | FIGURE |
|----------|------------|----------|----------|----------|--------|
| Original | LJL        | Geo-Comp | Sept, 88 | 1361     | 14     |
| Revision |            |          |          | N.T.S.   |        |
| Revision |            |          |          | 82E/5W   |        |

MINEQUEST EXPLORATION ASSOCIATES LTD.



PDL AKIRA II FR AKIRA I 120+00 N

119+00 N

118+00 N

117+00 N

116+00 N

115+00 N

114+00 N

113+00 N

112+00 N

111+00 N

110+00 N

109+00 N

108+00 N

107+00 N

105+00 N

105+00 N

104+00 N

103+00 N

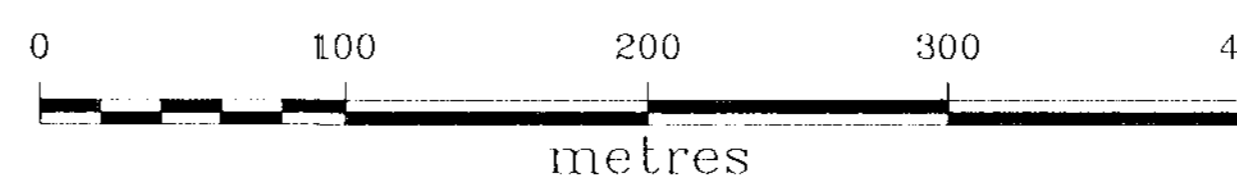
102+00 N

97+00 E 98+00 E 99+00 E 100+00 E 101+00 E 102+00 E 103+00 E 104+00 E 105+00 E 106+00 E 107+00 E 108+00 E 109+00 E 110+00 E 111+00 E 112+00 E 113+00 E 114+00 E 115+00 E 116+00 E 117+00 E

PDL FORD 1 ASTRO 1 FORD 2

LEGEND  
+ < 31 ppm  
o 31 < 40 ppm  
x 40 < 69 ppm  
o > 69 ppm

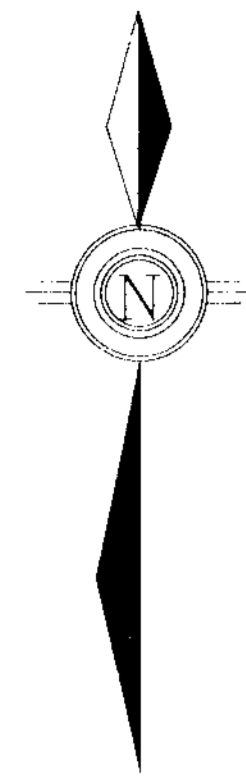
SCALE 1:2500



Part 3 of 3  
GEOLOGICAL BRANCH  
ASSESSMENT REPORT

18,251

|  |            |          |          |          |
|--|------------|----------|----------|----------|
| QPX MINERALS INC.                      |            |          |          |          |
| PDL PROPERTY, OSOYOOS M.D., B.C.       |            |          |          |          |
| GRID SOIL GEOCHEMISTRY<br>COPPER (ppm) |            |          |          |          |
| Original                               | Originator | Drawn    | Date     | PLAN No. |
| Revision                               | LJL        | Geo-Comp | Sept. 88 | 1362     |
| Revision                               |            |          |          | N.T.S.   |
|  |            |          |          | 82E/5W   |
|  |            |          |          | FIGURE   |
|  |            |          |          | 15       |
| MINEQUEST EXPLORATION ASSOCIATES LTD.  |            |          |          |          |



PDL

AKIRA II FR

AKIRA I

120+00 N

119+00 N

118+00 N

117+00 N

116+00 N

115+00 N

114+00 N

113+00 N

112+00 N

111+00 N

110+00 N

109+00 N

108+00 N

107+00 N

105+00 N

105+00 N

104+00 N

103+00 N

102+00 N

97+00 E

98+00 E

99+00 E

100+00 E

101+00 E

102+00 E

103+00 E

104+00 E

105+00 E

106+00 E

107+00 E

108+00 E

109+00 E

110+00 E

111+00 E

112+00 E

113+00 E

114+00 E

115+00 E

116+00 E

117+00 E

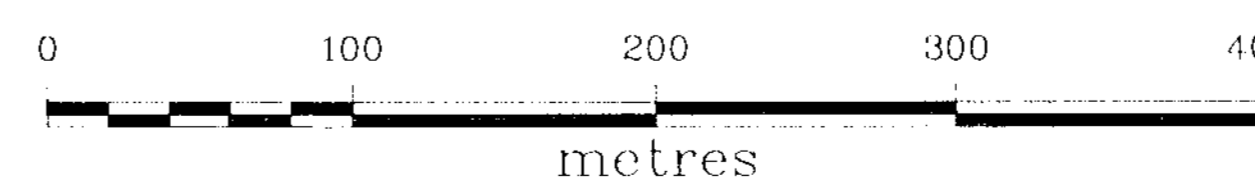
PDL

FORD 1

ASTRO 1  
FORD 2

- < 2 ppm
- 2 - 4 ppm
- 4 - 6 ppm
- > 6 ppm

SCALE: 1:2500



Part 3 of 3  
GEOLOGICAL BRANCH  
ASSESSMENT REPORT

18,251

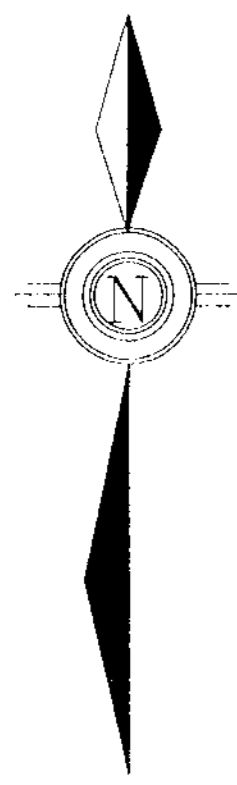
QPX MINERALS INC.

PDL PROPERTY, OSOYOOS M.D., B.C.

GRID SOIL GEOCHEMISTRY  
SILVER (ppm)

| Original | Revision | Originator | Drawn    | Date      | PLAN No. | FIGURE |
|----------|----------|------------|----------|-----------|----------|--------|
| Original |          | LL         | Geo-Comp | Sept. '88 | 1363     | 16     |
| Revision |          |            |          |           | N.T.S.   |        |
| Revision |          |            |          |           | 82E/5W   |        |

MINEQUEST EXPLORATION ASSOCIATES LTD.



PDL

AKIRA II FR.

AKIRA I

120+00 N

119+00 N

118+00 N

117+00 N

116+00 N

115+00 N

114+00 N

113+00 N

112+00 N

111+00 N

110+00 N

109+00 N

108+00 N

107+00 N

105+00 N

105+00 N

104+00 N

103+00 N

102+00 N

97+00 E

98+00 E

99+00 E

100+00 E

101+00 E

102+00 E

103+00 E

104+00 E

105+00 E

106+00 E

107+00 E

108+00 E

109+00 E

110+00 E

111+00 E

112+00 E

113+00 E

114+00 E

115+00 E

116+00 E

117+00 E

PDL

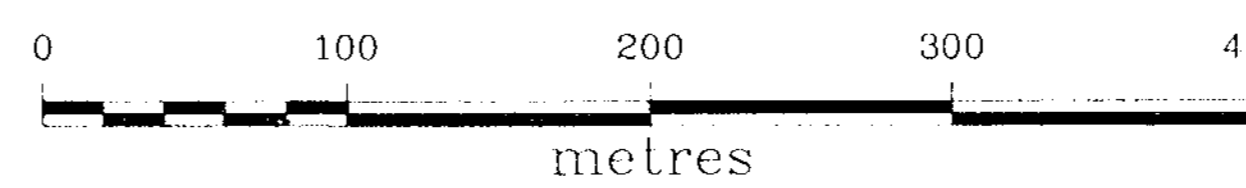
FORD 1

LEGEND

- < 5 ppm
- 5 - 6 ppm
- 6 - 7 ppm
- > 7 ppm

ASTRO 1  
FORD 2

SCALE 1:2500



Part 3 of 3

GEOLOGICAL BRANCH  
ASSESSMENT REPORT

18,251

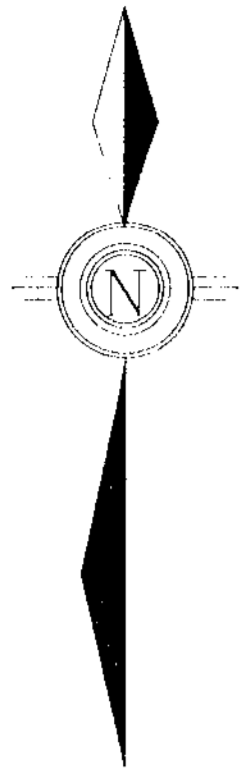
QPX MINERALS INC.

PDL PROPERTY, OSOYOOS M.D., B.C.

GRID SOIL GEOCHEMISTRY  
URANIUM (ppm)

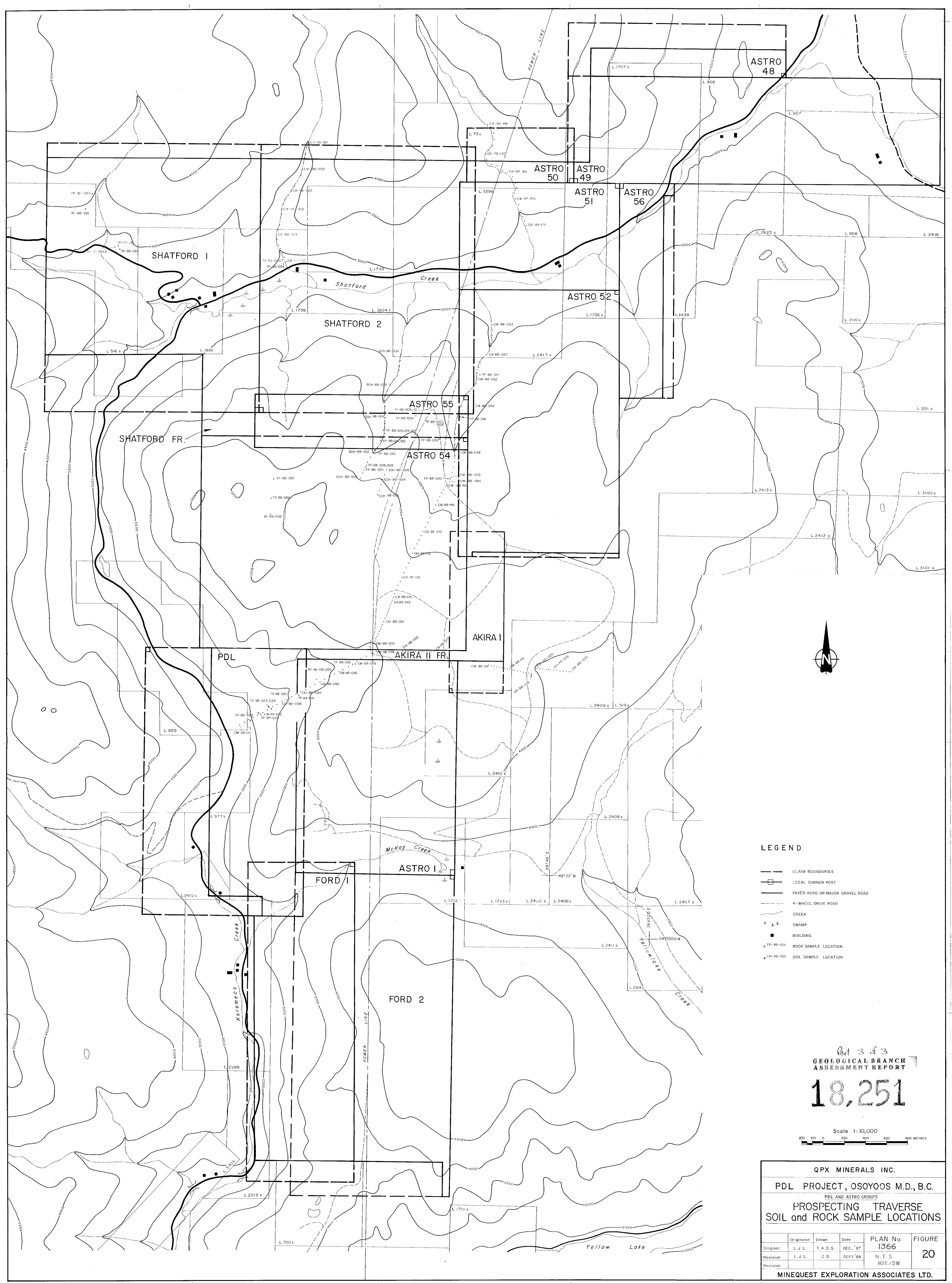
| Original | Originator | Drawn    | Date      | PLAN No. | FIGURE |
|----------|------------|----------|-----------|----------|--------|
| Revision | LJL        | Geo-Comp | Sept. '88 | 1364     | 17     |
| Revision |            |          |           | N.T.S.   |        |
|          |            |          |           | 82E/5W   |        |

MINEQUEST EXPLORATION ASSOCIATES LTD.



Part 3 of 3  
 GEOLOGICAL BRANCH  
 ASSESSMENT REPORT  
 18,251

|                                       |       |          |          |        |
|---------------------------------------|-------|----------|----------|--------|
| QPX MINERALS INC.                     |       |          |          |        |
| PDL PROPERTY, OSOYOOS M.D., B.C.      |       |          |          |        |
| GRID SOIL GEOCHEMISTRY                |       |          |          |        |
| THORIUM (ppm)                         |       |          |          |        |
| Originator                            | Drawn | Date     | PLAN No. | FIGURE |
| Original                              | J.L.  | Geo-Comp | Sept '88 | 1365   |
| Revision                              |       |          |          | N.T.S. |
| Revision                              |       |          |          | 82E/5W |
| MINEQUEST EXPLORATION ASSOCIATES LTD. |       |          |          |        |



**LEGEND**

- CLAIM BOUNDARIES
- LEGAL CORNER POST
- PAVED ROAD OR MAJOR GRAVEL ROAD
- - - 4-WHEEL DRIVE ROAD
- ~ CREEK
- SWAMP
- BUILDING
- x TP-88-001 ROCK SAMPLE LOCATION
- CM-88-001 SOIL SAMPLE LOCATION

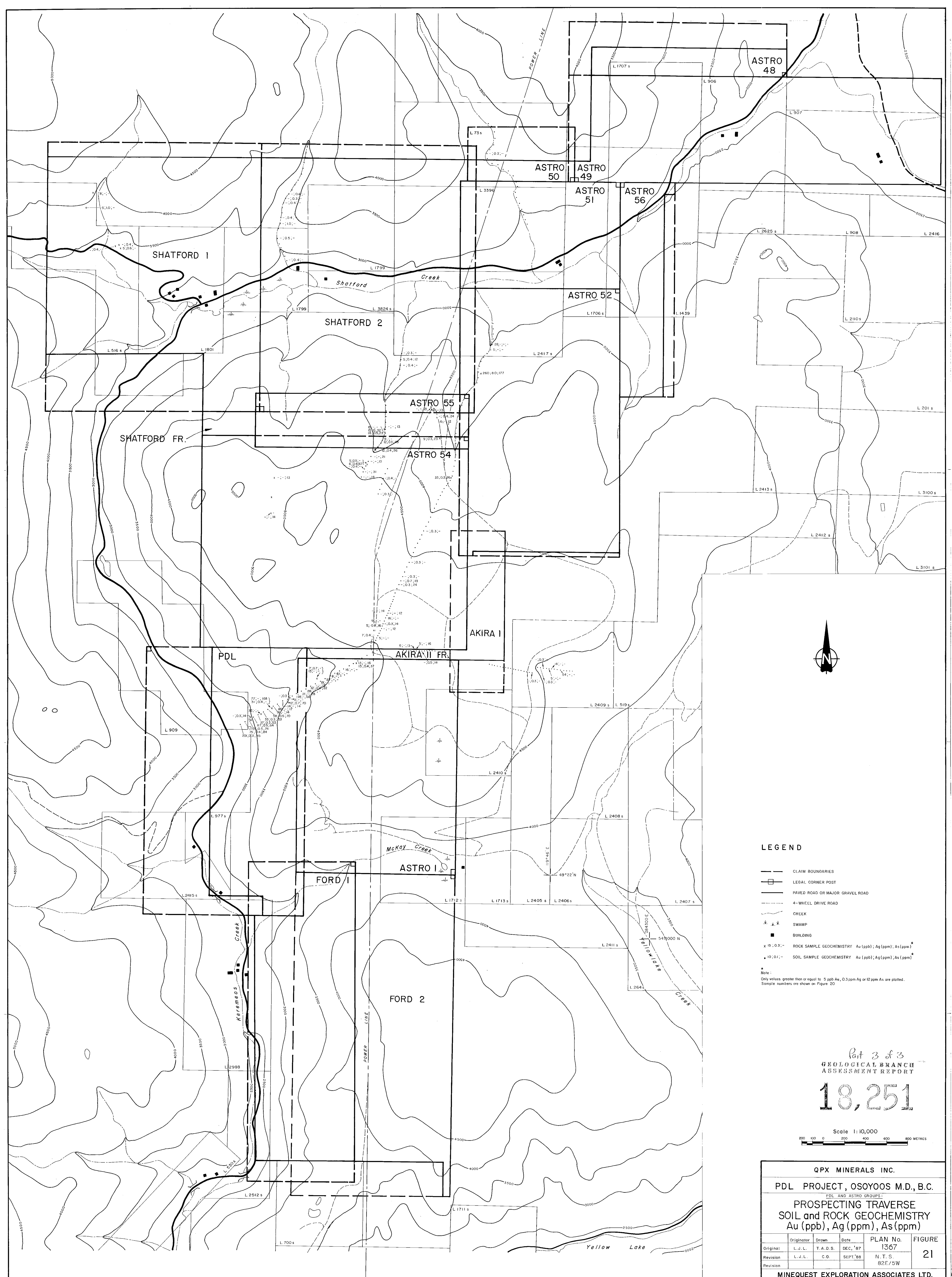


Part 3 of 3  
**GEOLOGICAL BRANCH  
 ASSESSMENT REPORT**

**18,251**

Scale 1:10,000  
 200 100 0 200 400 600 800 METRES

|  |        |          |          |                  |
|--|--------|----------|----------|------------------|
| <b>QPX MINERALS INC.</b>                                       |        |          |          |                  |
| <b>PDL PROJECT, OSOYOOS M.D., B.C.</b>                         |        |          |          |                  |
| PDL AND ASTRO GROUPS   |        |          |          |                  |
| <b>PROSPECTING TRAVERSE<br/>SOIL and ROCK SAMPLE LOCATIONS</b> |        |          |          |                  |
| Original   | L.J.L. | T.A.D.S. | DEC, '87 | PLAN No.<br>1366 |
| Revision   | L.J.L. | C.D.     | SEPT '88 | FIGURE<br>20     |
| Revision   |        |          |          | N.T.S.<br>82E/5W |
| <b>MINEQUEST EXPLORATION ASSOCIATES LTD.</b>                   |        |          |          |                  |



**LEGEND**

- CLAIM BOUNDARIES
- LEGAL CORNER POST
- ▬ PAVED ROAD OR MAJOR GRAVEL ROAD
- - - 4-WHEEL DRIVE ROAD
- ~~~ CREEK
- ⊞ SWAMP
- BUILDING
- x 15:0.3:-- ROCK SAMPLE GEOCHEMISTRY Au (ppb); Ag (ppm); As (ppm)\*
- 10:0.1:-- SOIL SAMPLE GEOCHEMISTRY Au (ppb); Ag (ppm); As (ppm)\*

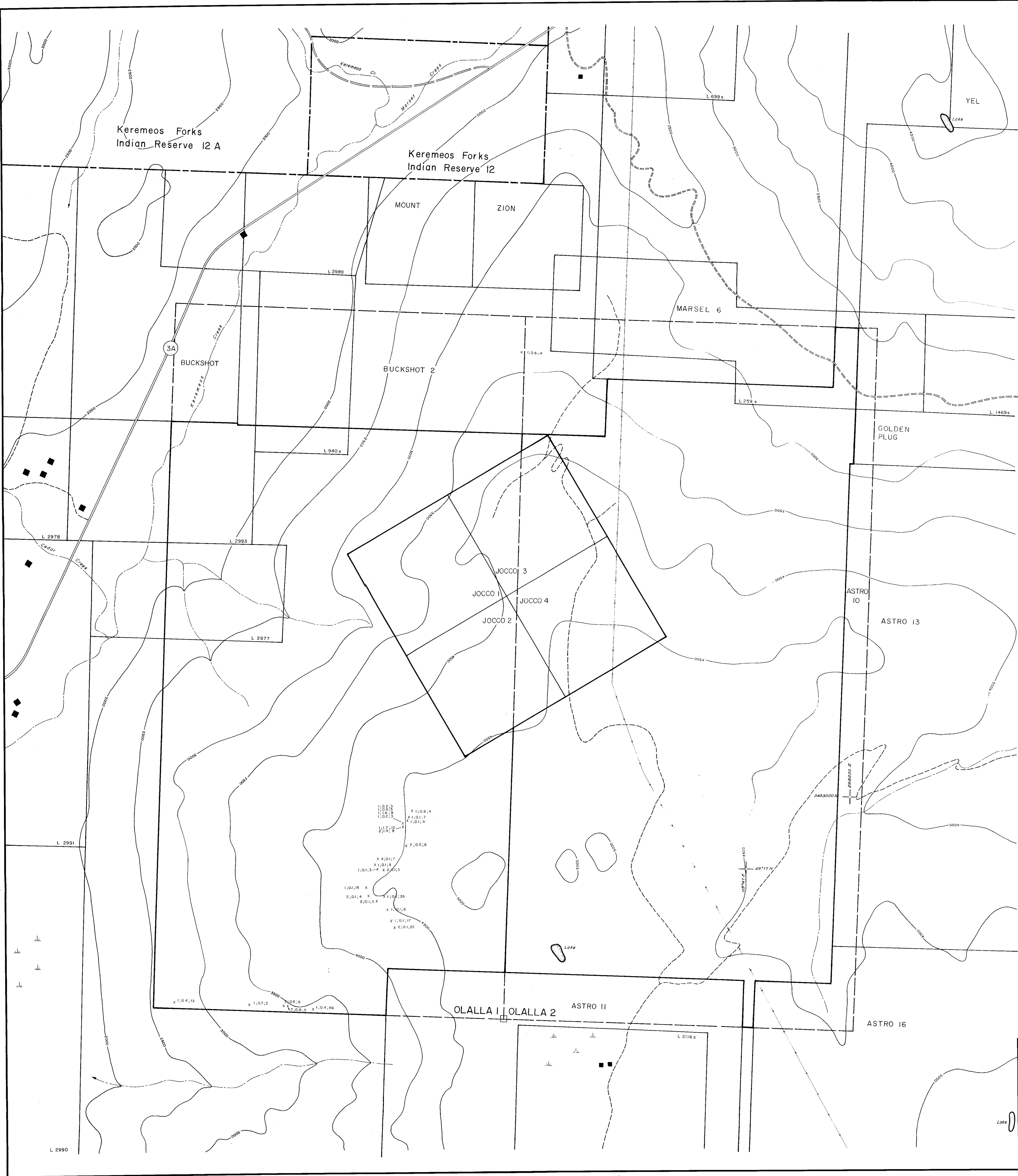
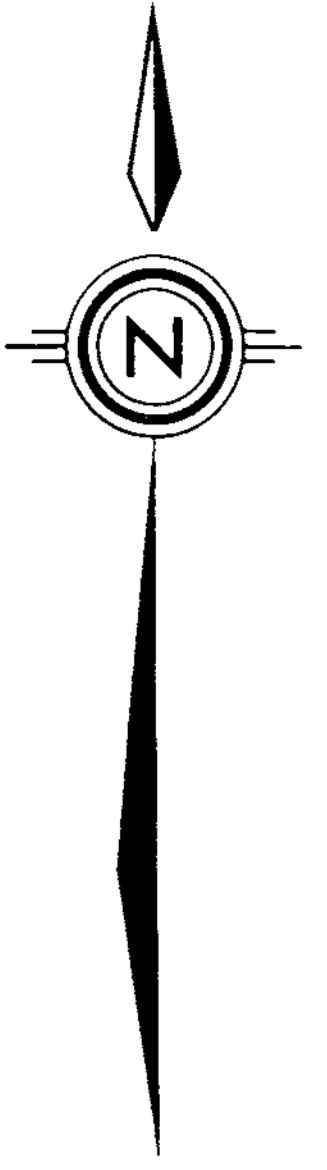
\* Note:  
Only values greater than or equal to 5 ppb Au, 0.5 ppm Ag or 12 ppm As are plotted.  
Sample numbers are shown on Figure 20.

Part 3 of 3  
GEOLOGICAL BRANCH  
ASSESSMENT REPORT

**18,251**

Scale 1:10,000  
200 100 0 200 400 600 800 METRES

|                                       |            |          |           |          |        |
|---------------------------------------|------------|----------|-----------|----------|--------|
| QPX MINERALS INC.                     |            |          |           |          |        |
| PDL PROJECT, OSOYOOS M.D., B.C.       |            |          |           |          |        |
| PDL AND ASTRO GROUPS:                 |            |          |           |          |        |
| PROSPECTING TRAVERSE                  |            |          |           |          |        |
| SOIL and ROCK GEOCHEMISTRY            |            |          |           |          |        |
| Au (ppb), Ag (ppm), As (ppm)          |            |          |           |          |        |
| Original                              | Originator | Drawn    | Date      | PLAN No. | FIGURE |
| Revision                              | L.J.L.     | T.A.D.S. | DEC, '87  | 1367     | 21     |
| Revision                              | L.J.L.     | C.D.     | SEPT, '88 | N.T.S.   |        |
| Revision                              |            |          |           | 82E/5W   |        |
| MINEQUEST EXPLORATION ASSOCIATES LTD. |            |          |           |          |        |



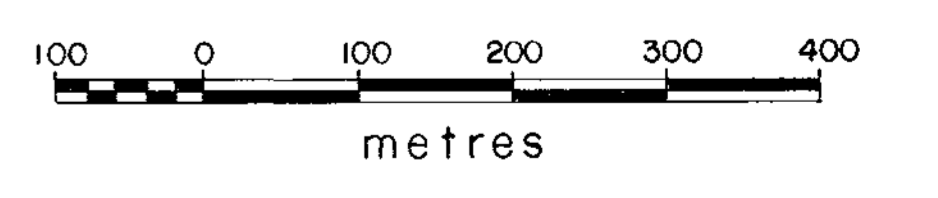
- Legend**
- HIGHWAY
  - MAJOR GRAVEL ROAD
  - - - 4-WHEEL DRIVE ROAD
  - - - POWER LINE
  - ~ CREEK
  - ~ SWAMP
  - - - CLAIM BOUNDARY
  - ⊕ LEGAL CORNER POST
  - LAKE
  - x 4,01,3 ROCK SAMPLE Au(ppb), Ag(ppm)As(ppm)

Note: Sample numbers are shown on Figure 7

Part 3 of 3  
GEOLOGICAL BRANCH  
ASSESSMENT REPORT

**18,251**

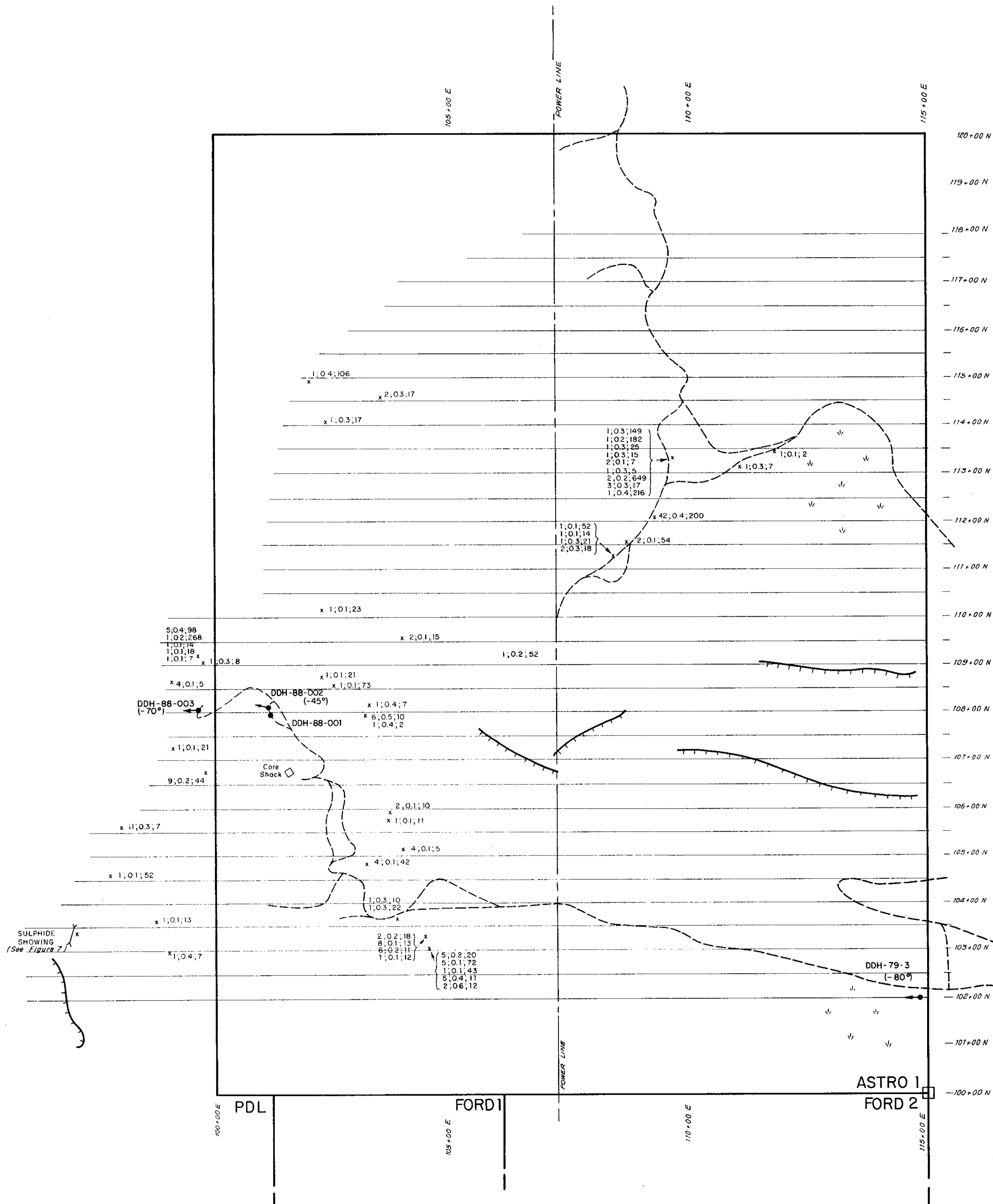
Scale 1: 5000



|                                       |            |         |          |          |
|---------------------------------------|------------|---------|----------|----------|
| QPX MINERALS INC.                     |            |         |          |          |
| PDL PROJECT-OSOYOOS M.D., B.C.        |            |         |          |          |
| OLALLA GROUP                          |            |         |          |          |
| ROCK GEOCHEMISTRY                     |            |         |          |          |
| Au (ppb) Ag (ppm) As (ppm)            |            |         |          |          |
| Original                              | Originator | Drawn   | Date     | PLAN No. |
| Revision                              | L.J.L.     | T.A.D.S | Nov, '87 | 1368     |
| Revision                              |            |         |          | N.T.S.   |
| Revision                              |            |         |          | 82 E / 5 |
| MINEQUEST EXPLORATION ASSOCIATES LTD. |            |         |          |          |

FIGURE  
**22**





**Legend**

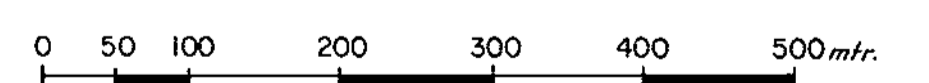
- CLAIM BOUNDARY
- GRID LINE
- ROAD
- SWAMP
- POWER LINE
- TRENCH
- DRILL HOLE
- CLIFFS
- x Au (ppb); Ag (ppm); As (ppm)  
15 0.3 18

NOTE: SAMPLE NUMBERS ARE SHOWN ON FIG. 6

Part 3 of 3  
**GEOLOGICAL BRANCH  
ASSESSMENT REPORT**

**18,251**

SCALE 1: 5,000



|                                       |            |       |           |        |      |
|---------------------------------------|------------|-------|-----------|--------|------|
| <b>QPX MINERALS INC.</b>              |            |       |           |        |      |
| PDL PROPERTY, OSOYOOS M.D., B.C.      |            |       |           |        |      |
| <b>GRID ROCK SAMPLE RESULTS</b>       |            |       |           |        |      |
|                                       | Originator | Drawn | Date      | PLAN   | FIG. |
| Original                              | L.J.L.     | C.D.  | Nov. 1998 | 1370   |      |
| Revision                              |            |       |           | N.T.S. | 23   |
| Revision                              |            |       |           | 82E/5W |      |
| MINEQUEST EXPLORATION ASSOCIATES LTD. |            |       |           |        |      |

9600 9700 9800 9900 10000 10100 10200 10300 10400 10500 10600 10700 10800 10900 11000 11100 11200 11300 11400 11500



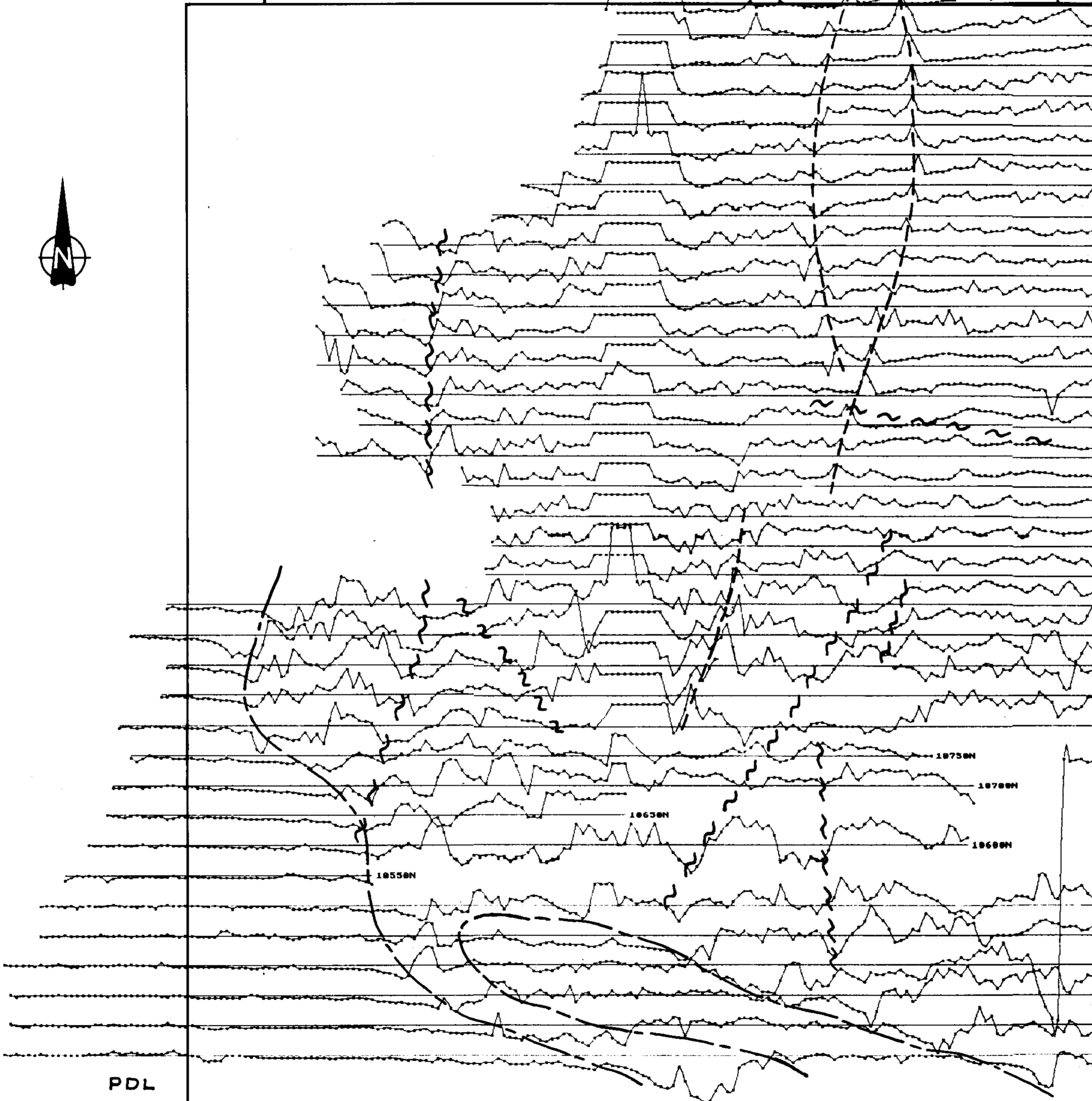
PDL

POWER LINE

AKIRA II

FR

12000 N  
11950 N  
11900 N  
11850 N  
11800 N  
11750 N  
11700 N  
11650 N  
11600 N  
11550 N  
11500 N  
11450 N  
11400 N  
11350 N  
11300 N  
11250 N  
11200 N  
11150 N  
11100 N  
11050 N  
10950 N  
10900 N  
10850 N  
10800 N  
10750 N  
10700 N  
10650 N  
10600 N  
10550 N  
10500 N  
10450 N  
10400 N  
10350 N  
10300 N  
10250 N



**KEY**

**INSTRUMENT:** Scintrex IGS-2  
**CONFIGURATION:**  
Total Field Intensity Magnetometer  
VLF-EM - MLK (Seattle, Wash.)  
- 24.8 kHz  
**VERTICAL SCALE:** 1500 nT/cm  
**BASE LINE VALUE:** 57800 nT  
**MAP SCALE:** 1:5000  
**N.T.S.:** 82E/5  
**MINING DIVISION:** OSOY005

**INTERPRETATION KEY**

— LITHOLOGICAL CONTACT  
- - - SURFACE LINEATION  
~ ~ ~ FAULT

Part 3 of 3  
**GEOLOGICAL BRANCH  
ASSESSMENT REPORT**

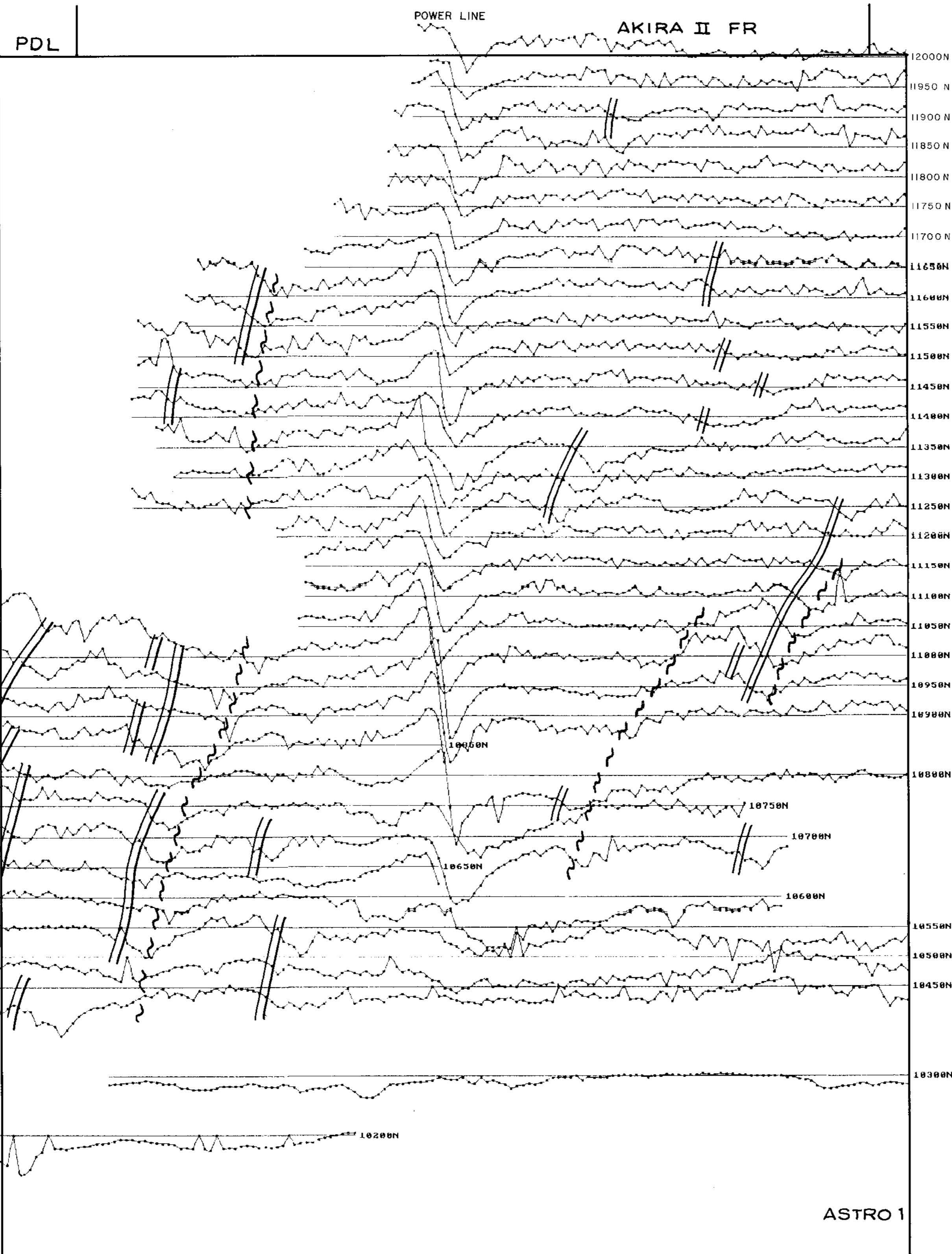
**18,251**

*Ext. plan No. 622*

|   |
|---|
| <b>MINEQUEST</b><br>EXPLORATION ASSOCIATES LTD.                                       |
| <b>PDL PROJECT</b>  |
| <b>MAGNETOMETER SURVEY</b><br><b>TOTAL FIELD INTENSITY (nT)</b><br><b>PROFILE MAP</b> |
| SYN DATE: AUG/88  |

FIGURE: 24

9600 9700 9800 9900 10000 10100 10200 10300 10400 10500 10600 10700 10800 10900 11000 11100 11200 11300 11400 11500



**KEY**

**INSTRUMENT:** Scintrex TGS-2

**CONFIGURATION:**  
 Total Field Intensity Magnetometer  
 VLF-EM - NLK (Seattle, Wash.)  
 - 24.8 kHz

**VERTICAL SCALE:** 50  $\gamma$ /cm

**BASE LINE VALUE:** 0  $\gamma$

**MAP SCALE:** 1:5000

**N.T.S.:** 82E/5

**MINING DIVISION:** OSOY005

**INTERPRETATION KEY**

==== CONDUCTIVE LINEATION

~~~~ FAULT

Part 3 of 3  
 GEOLOGICAL BRANCH  
 ASSESSMENT REPORT

18,251

Ext. plan No. 623

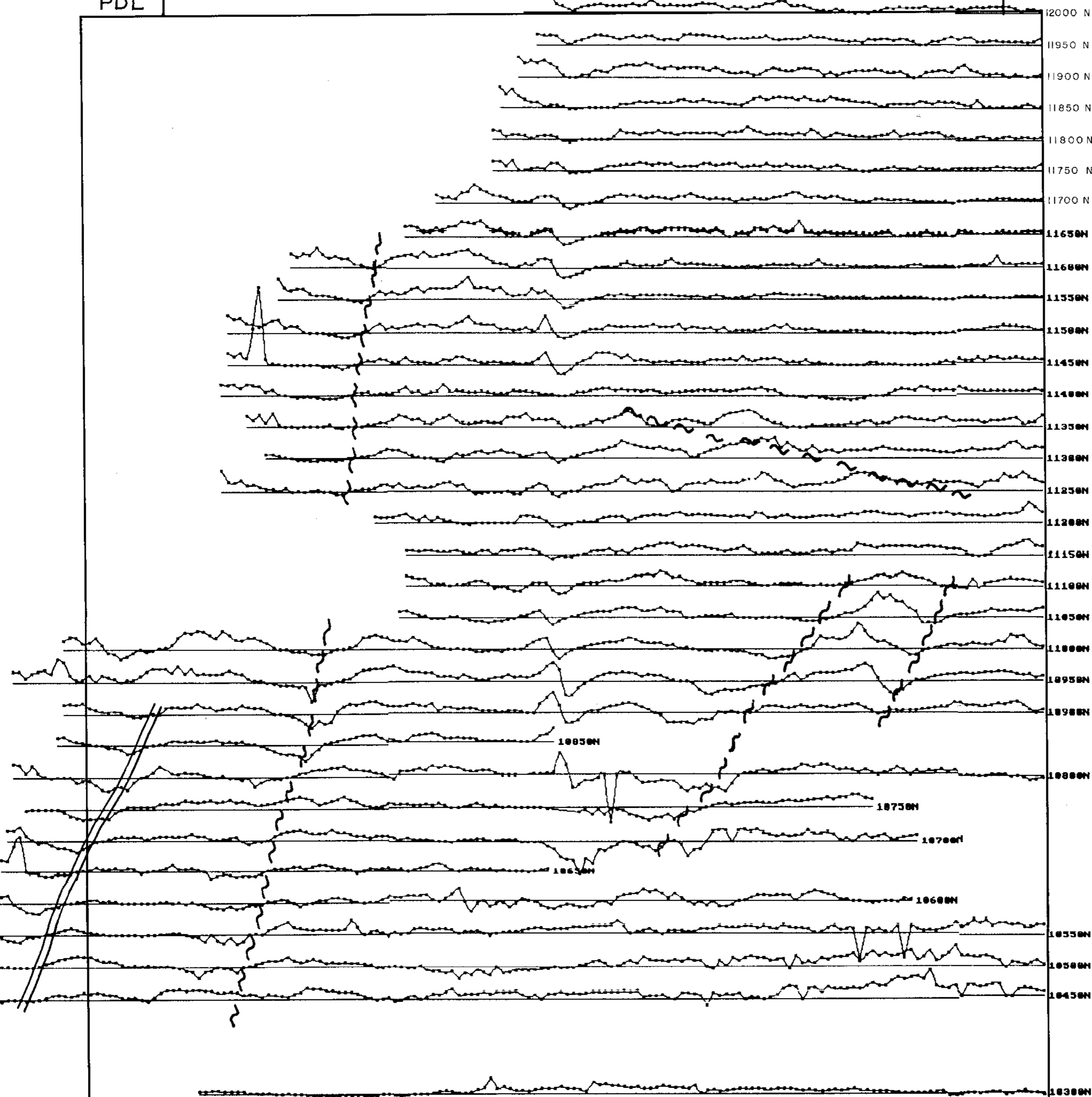
|                                                                            |
|----------------------------------------------------------------------------|
| <b>MINEQUEST</b><br>EXPLORATION ASSOCIATES LTD.                            |
| <b>PDL PROJECT</b>                                                         |
| <b>VLF-EM SURVEY</b><br><b>INPHASE COMPONENT (%)</b><br><b>PROFILE MAP</b> |
| SVY DATE: AUG/88 <span style="float: right;">FIGURE: 25</span>             |

9600 9700 9800 9900 10000 10100 10200 10300 10400 10500 10600 10700 10800 10900 11000 11100 11200 11300 11400 11500

PDL

POWER LINE

AKIRA II FR



**KEY**

INSTRUMENT: Scintrex IGS-2

CONFIGURATION:  
Total Field Intensity Magnetometer  
VLF-EM - NLK (Seattle, Wash.)  
- 24.8 kHz

VERTICAL SCALE: 50 %/cm

BASE LINE VALUE: 0 %

MAP SCALE: 1:5000

N.T.S.: 02E/5

MINING DIVISION: 050Y005

**INTERPRETATION KEY**

==== CONDUCTIVE LINEATION

~ ~ FAULT

Part 3 of 3  
GEOLOGICAL BRANCH  
ASSESSMENT REPORT

18,251

Ext. plan No. 624

|                                                                               |            |
|-------------------------------------------------------------------------------|------------|
| <b>MINEQUEST</b><br>EXPLORATION ASSOCIATES LTD.                               |            |
| <b>PDL PROJECT</b>                                                            |            |
| <b>VLF-EM SURVEY</b><br><b>QUADRATURE COMPONENT (%)</b><br><b>PROFILE MAP</b> |            |
| SVY DATE: AUG/88                                                              | FIGURE: 26 |

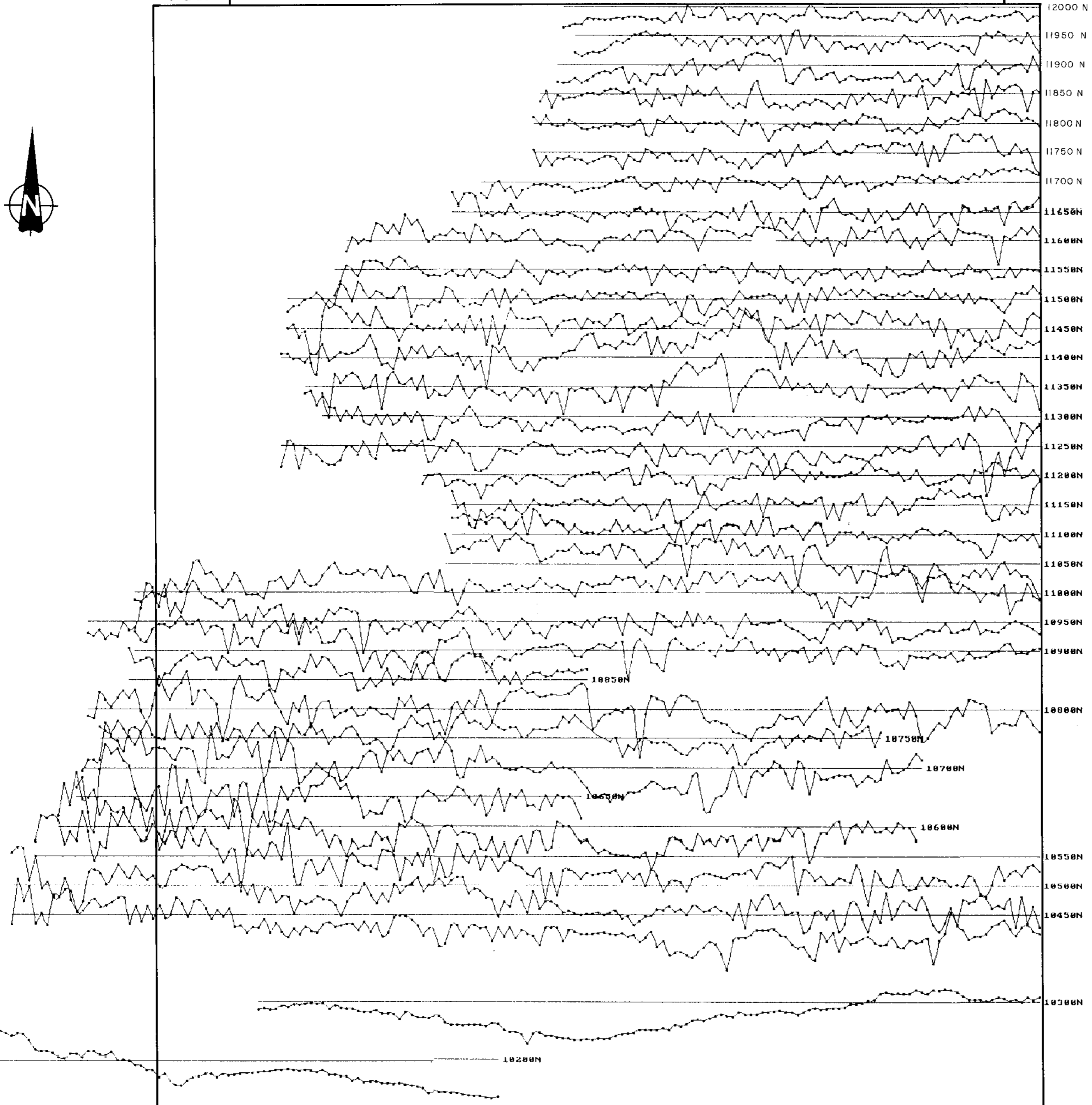
PDL

ASTRO 1

9600 9700 9800 9900 10000 10100 10200 10300 10400 10500 10600 10700 10800 10900 11000 11100 11200 11300 11400 11500

AKIRA II FR

PDL



**KEY**

INSTRUMENT: Scintrex IGS-2

CONFIGURATION:  
Total Field Intensity Magnetometer  
VLF-EM - NLX (Seattle, Wash.)  
- 24.8 kHz

VERTICAL SCALE: 50 %/cm

BASE LINE VALUE: 125 %

MAP SCALE: 1:5000

N.T.S.: 82E/5

MINING DIVISION: OSOYOOS

Part 3 of 3  
GEOLOGICAL BRANCH  
ASSESSMENT REPORT

18,251

Ext. plan No. 625

|                                                    |
|----------------------------------------------------|
| MINEQUEST<br>EXPLORATION ASSOCIATES LTD.           |
| PDL PROJECT                                        |
| VLF-EM SURVEY<br>FIELD STRENGTH (%)<br>PROFILE MAP |
| SYN DATE: AUG/88                                   |
| FIGURE: 27                                         |

PDL

ASTRO 1

9600 9700 9800 9900 10000 10100 10200 10300 10400 10500 10600 10700 10800 10900 11000 11100 11200 11300 11400 11500

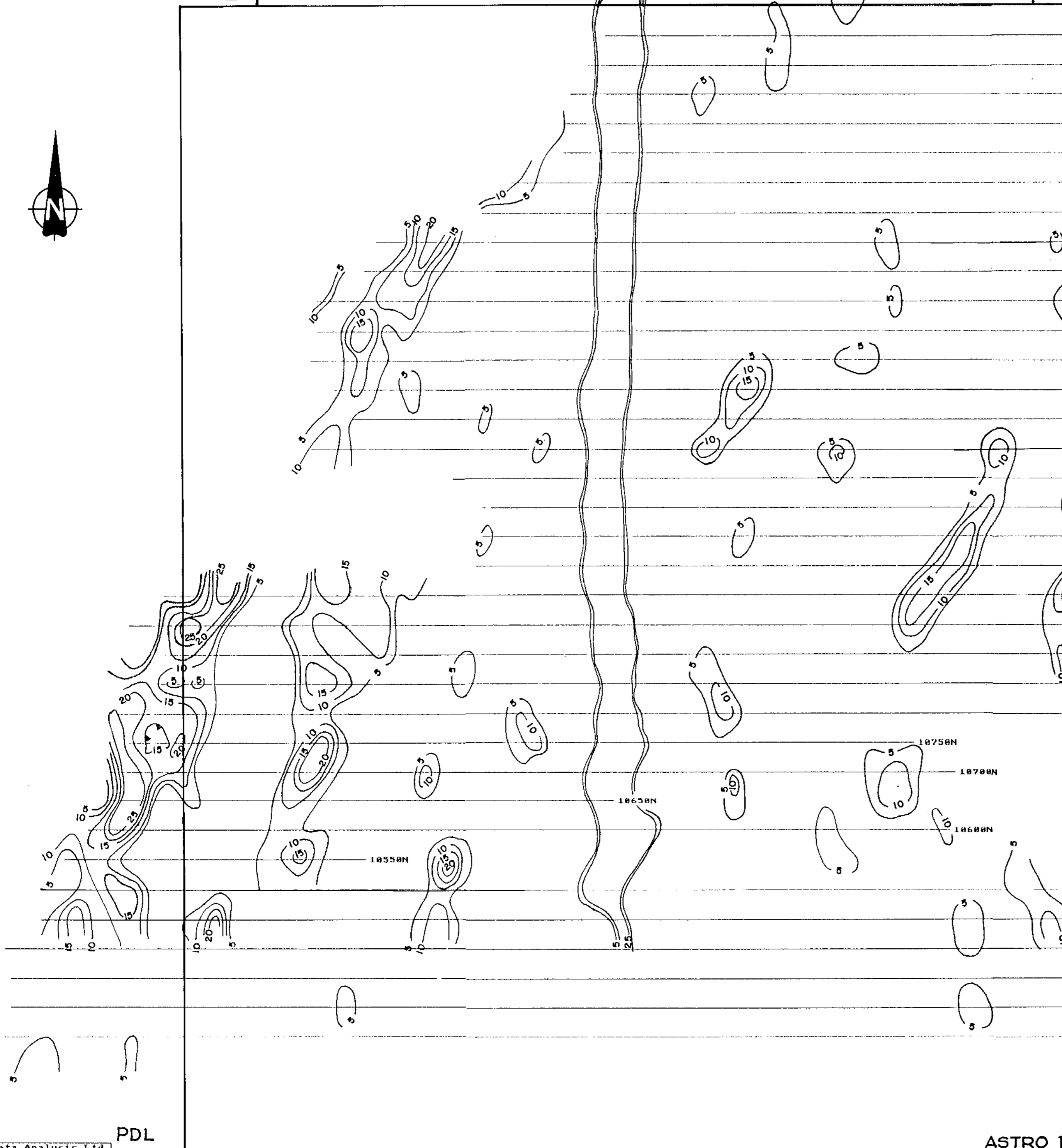


PDL

POWER LINE

AKIRA II FR

12000N  
11950N  
11900N  
11850N  
11800N  
11750N  
11700N  
11650N  
11600N  
11550N  
11500N  
11450N  
11400N  
11350N  
11300N  
11250N  
11200N  
11150N  
11100N  
11050N  
11000N  
10950N  
10900N  
10850N  
10800N  
10750N  
10700N  
10650N  
10600N  
10550N  
10500N  
10450N  
10400N  
10350N  
10300N  
10250N



**KEY**

INSTRUMENT: Scintrex IGS-2  
CONFIGURATION:  
Total Field Intensity Magnetometer  
VLF-EM - NLK (Seattle, Wash.)  
- 24.8 kHz  
CONTOUR INTERVAL: 5 %  
MAP SCALE: 1:5000  
N.T.S.: 82E/5  
MINING DIVISION: OSOY005

Part 3 of 3  
GEOLOGICAL BRANCH  
ASSESSMENT REPORT

18,251

Ext. plan No. 626

**MINEQUEST**  
EXPLORATION ASSOCIATES LTD.

**PDL PROJECT**  
**VLF-EM SURVEY**  
**FRASER FILTERED INPHASE DATA**  
**CONTOUR MAP**

SVY DATE: AUG/88

FIGURE: 28



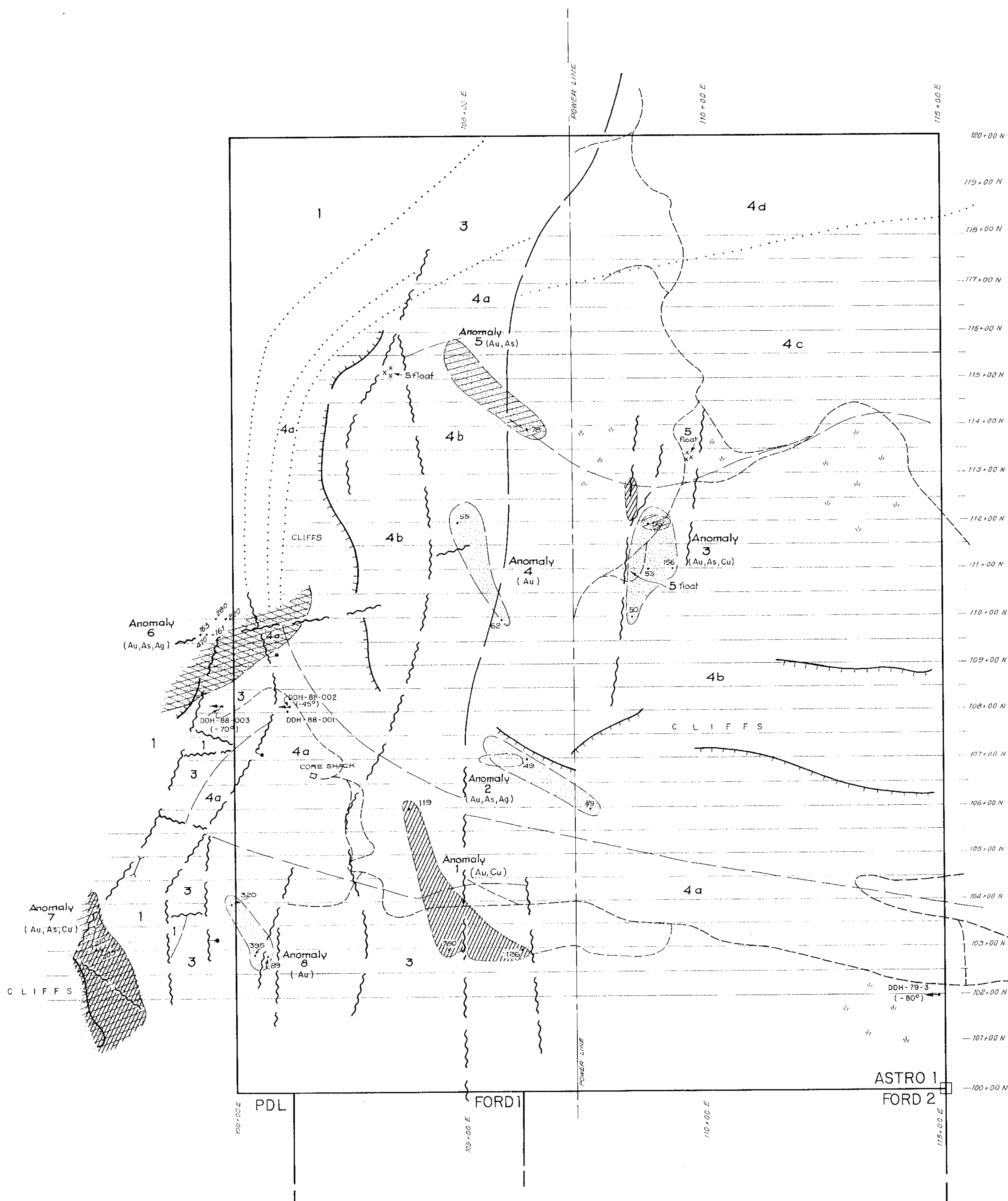
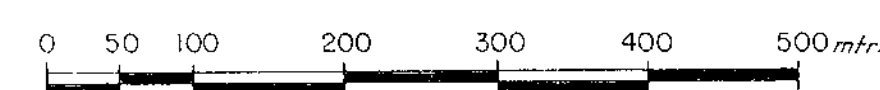
Part 3 of 3  
GEOLOGICAL BRANCH  
ASSESSMENT REPORT

18,251

Legend

- POST EOCENE (age uncertain)**
- 5 Polyniatic conglomerate of uncertain origin, possibly fault related. Composed of subround pebbles and rare boulders of units 1, 2 and 4 in a fine matrix with 5% rounded quartz pebbles, 2% euhedral biotite and rare pyroxene crystals.
- EOCENE**
- Marron Formation:**
- 4d Nimpit Lake Member: Tan trachyte and trachyandesite lava and minor breccia
  - 4c Kearns Creek Member: Vesicular pyroxene-rich basaltic andesite lava
  - 4b Kitley Lake Member: Trachybasaltic lava with conspicuous plagioclase phenocrysts and clots of feldspar
  - 4a Yellow Lake Member: Pyroxene rich mafic phonolite lava with local well developed phenocrysts of enorthoclase. Abundant zeolites.
- Springbrook Formation:**
- 3 Polyniatic conglomerate. Clasts are mainly pre-faulting cherts and greenstones; minor intrusive and rhyolite clasts. Siltier narrow sandstone and tuffaceous sandstone interbeds.
  - 2 Medium to coarse grained quartz diorite, diorite or porphyritic latite dykes.
- POST TRIASSIC (age uncertain)**
- Shoemaker Formation:**
- 1 Waxy cherts, locally brecciated, minor greenstone, limestone and tuffs.
- TRIASSIC OR OLDER**
- Anomalous Au values (best values in each anomaly are shown in ppb Au)
  - Anomalous As values
  - Anomalous Ag values
  - Anomalous Cu values
  - Claim boundary
  - Grid line
  - Fault
  - Road
  - Swamp
  - Diamond drill hole
  - Power line
  - Geological contact: mapped from Church, (1982)
  - Regional fault: from Church, (1982)
  - Trench
  - Cliff

SCALE 1:5,000



QPX MINERALS INC.  
PDL PROPERTY, OSOYOOS M.D., B.C.  
PDL and ASTRO GROUPS  
ANOMALY  
COMPILATION MAP

|          | Originator | Drawn | Date      | PLAN   | FIG. |
|----------|------------|-------|-----------|--------|------|
| Original | L. J. L.   | C. D. | Nov. 1988 | 1375   | 29   |
| Revision | L. J. L.   | C. D. | Nov. 1988 | N.T.S. |      |
| Revision |            |       |           | 82E/5W |      |

MINEQUEST EXPLORATION ASSOCIATES LTD.