

0123 RD
FILE NO.

GEOCHEMICAL SOIL SURVEY
REPORT

FILMED

FOR

OWNER AND OPERATOR
TOBEX RESOURCES LTD.

ON

AD CLAIMS #1 AND #3
RECORD NO. 1049 AND 1051

LOCATED AT SHEPPARD CREEK
IN TRAIL CREEK M.D.

MAP SHEET 82F/4E

Latitude 49° 02'N

Longitude 117° 38'W

18,271

GEOLOGICAL BRANCH
ASSESSMENT REPORT

SUN-RECORDER
RECEIVED
1/18/89
JAN 18 1989
M.R. # _____ \$
VANCOUVER, B.C.

E. Livgard, P.Eng.
Livgard Consultants Ltd.
January, 1989



INDEX

| | Page |
|-----------------------------|-------------|
| Introduction | 1 |
| Property | 1 |
| Location and Access | 2 |
| Topography and Climate | 2 |
| History | 2 |
| Geology | 3 |
| Geochemical Soil Survey | 3 |
| Coverage | 3 |
| Grid System | 3 |
| Soil Samples | 3 |
| Analysis | 4 |
| Statistics | 4 |
| Results and Recommendations | 5 |

APPENDIX

Analysis Certificates, 17 pages
Statistics, 26 pages
Personnel
Cost Statement
Certificate

MAPS

| | Following Page |
|--|-----------------------|
| Figure 1 Location Map | 1 |
| Figure 2 Claim Map and Soil Grid | 1 |
| Figure 3 Soil, Rock, and Silt-Silver ppm | 4 |
| Figure 4 Soil, Rock, and Silt-Copper ppm | 4 |
| Figure 5 Soil, Rock, and Silt-Arsenic ppm | 4 |



INTRODUCTION

The writer was asked by Mike Gerg, President of Tobex Resources Ltd. to lay-out and carry out a soil survey on part of the Company's AD claims. The writer engaged Donegal Developments Ltd. to carry out the survey.

The fieldwork was done between August 12 and August 27, 1988.

PROPERTY

The property consists of four modified grid claims each containing 16 units

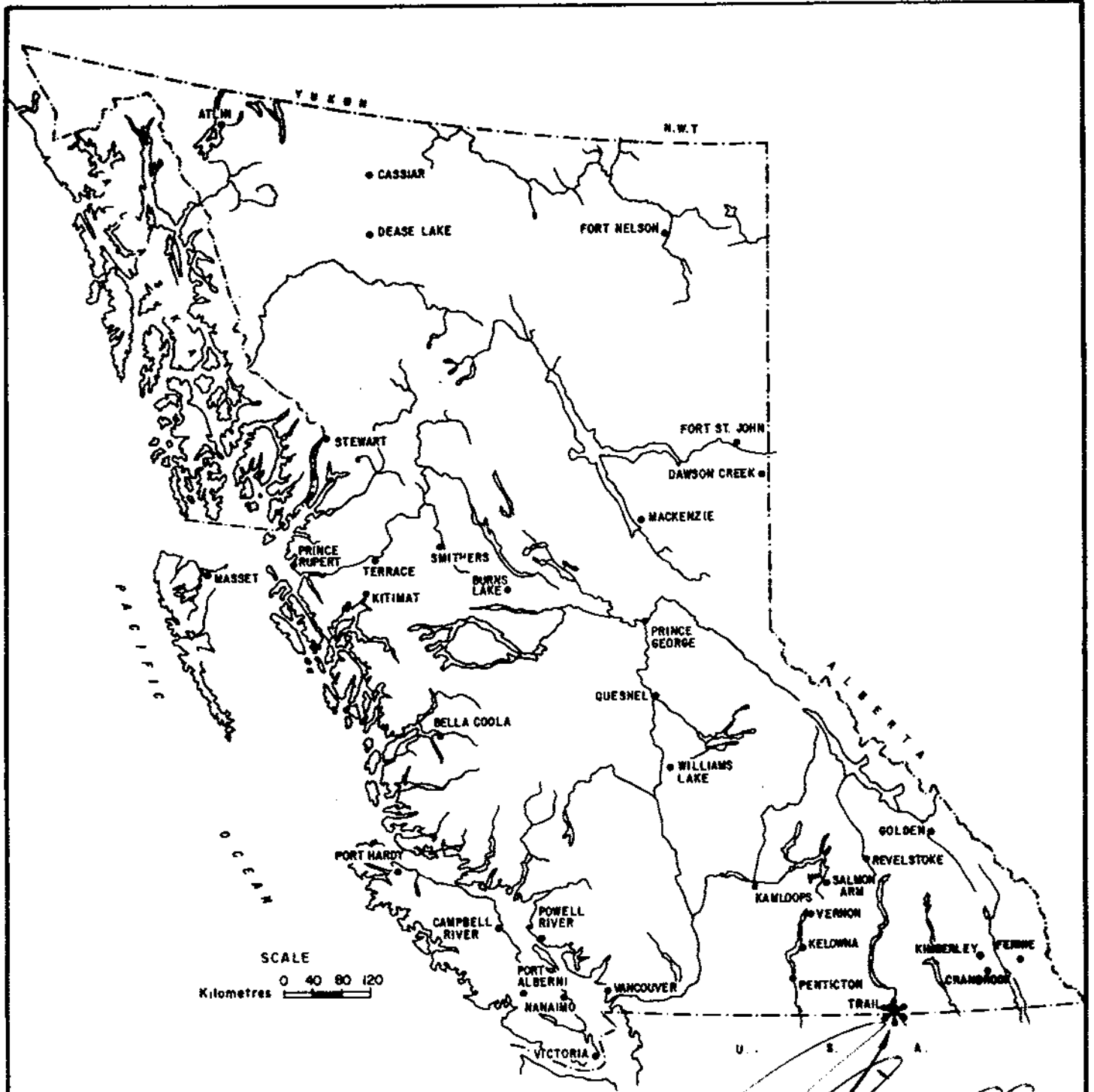
| | | |
|-------|--------------|-------------------------|
| AD #1 | Rec No. 1049 | Expiry October 26, 1991 |
| AD #2 | Rec No. 1050 | Expiry October 26, 1991 |
| AD #3 | Rec No. 1051 | Expiry October 26, 1991 |
| AD #4 | Rec No. 1052 | Expiry October 26, 1991 |

and eleven two post claims

AD #5 to #15
Rec No. 1134 to 1144
Expiry date August 15, 1989.

The recorded owner is Tobex Resources Ltd.





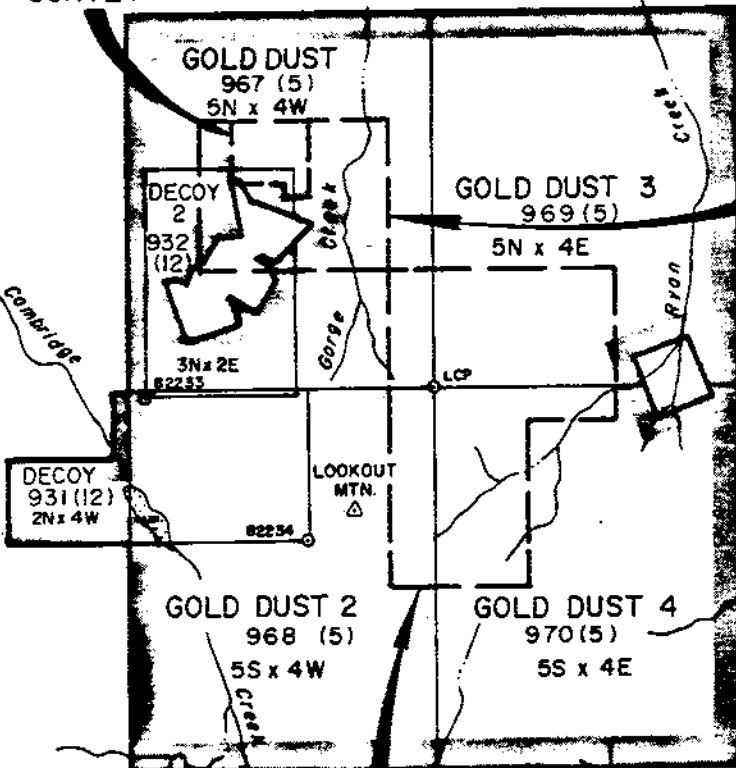
PROPERTY

[Handwritten signature]

FIGURE 1

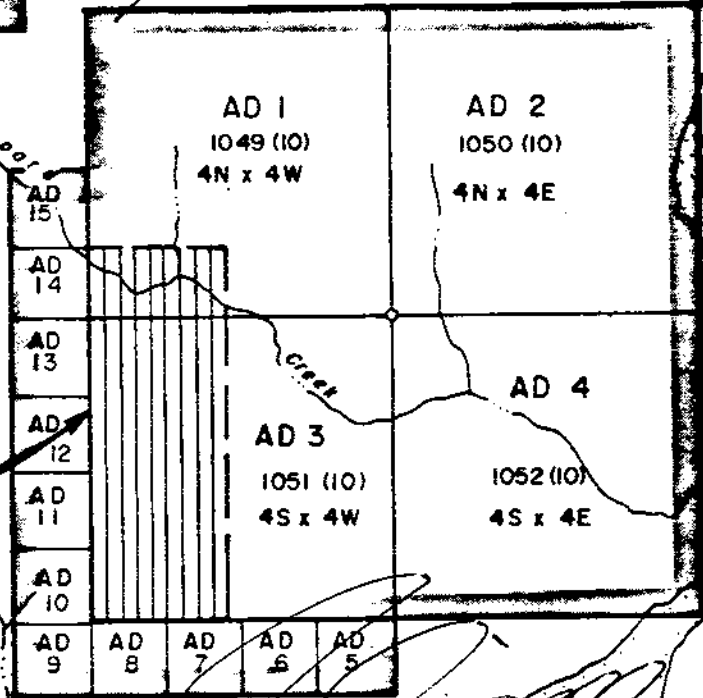
| | |
|------------------------------------|-----------------------|
| TOBEX RESOURCES LTD. | |
| AD GROUP OF CLAIMS | |
| TRAIL CREEK MINING DIVISION, B. C. | |
| LOCATION MAP | |
| LIVGARD CONSULTANTS LTD. | |
| SCALE: 1:8,000,000 | DATE: SEPTEMBER, 1969 |

**TRAIL
OUTLINE OF MAGNETIC
SURVEY**



OUTLINE OF TRAIL GRID

OUTLINE OF CASINO GRID



**OUTLINE OF AD GRID
FOR DETAIL SEE
FIGURES 3, 4 & 5**



FIGURE 2

| | |
|-------------------------------------|-----------------------|
| TOBEX RESOURCES LTD. | |
| AD GROUP OF CLAIMS | |
| TRAIL CREEK MINING DIVISION, B.C. | |
| CLAIM MAP WITH SOIL GRID | |
| LIVGARD CONSULTANTS LTD. | |
| SCALE: 1:50,000 | DATE: SEPTEMBER, 1988 |

LOCATION AND ACCESS

The claims are located in the Trail Creek M.D. on Map Sheet 82F/4E. The east border of the claims lies approximately along the Columbia river. The claims cover most of the Sheppard Creek drainage basin. The claims can be reached by paved and gravel road from the city of Trail for 18 km east and south along Columbia River. A very steep and very difficult road follows a high tension line along the southern boundary of the claims. No other roads are known to exist on the property.

TOPOGRAPHY AND CLIMATE

Elevations on the claim ground ranges from 450 ASL near the river up to 1,200 m ASL near the north and east claim boundaries. The east and south slopes are steep, partly barren and have frequent scree slopes. The higher areas have sparse pine growth while the upper Sheppard Creek basin has dense Spruce - Cedar forest cover. The area has the relatively cold winters and warm summers of an inland climate. From appearance the area has a low precipitation.

HISTORY

The AD #1 to 4 claims were staked in October, 1987 and the AD #5 to 15 in August, 1988.

The claim acquisition was based on the occurrence of favourable rocks as shown on geology map Rossland - Trail 1504A-GSC 1982, on area prospecting and on airphoto interpretation. A few old trenches and pits have been located on the ground, but no assessment work report relating to the ground has been filed in the past. Minor soil surveying has been filed in the past on ground south and east of the claims exploring for gold related to the Waneta thrust fault.



GEOLOGY

The claims cover largely rocks of the Rossland group which consists of massive andesites, basalts, agglomerate, breccias and tuffs and Jurassic age. These rocks are surrounded by Sheppard intrusives consisting of granite and syenite.

The Rossland Group rocks are favourable hosts for gold mineralization in the Rossland area and elsewhere.

GEOCHEMICAL SOIL SURVEY

The survey was carried out by Donegal Developments Ltd. on behalf of Tobex Resources Ltd. under the writer's supervision.

Coverage

The survey covered the west half of AD #3 and the southwest corner of AD #1 for a total of 2.295 km².

Grid System

A baseline running east-west, was established using compass and hip-chain. Stations were marked with pickets every 100 metres over a length of 900 metres. The baseline was cut out. From the baseline survey, lines were run 1,300 metres south and 1,250 metres north using compass and hip-chain. Sample stations were marked every 50 metres with flagging. The lines were marked with flagging.

Soil Samples

Soil samples were taken every 50 metres from the "B" horizon where possible, using a maddock. The sample depth varied from 25 cm to near



surface on shallow soil. Part of the survey area had at times thin or no soil, in which case a rock chip sample was collected. A total of 500 soil samples, 21 rock samples and two silt sample (from Sheppard Creek) were collected. The samples were placed in Kraft paper soil bags and shipped to Min-En Labs for analysis.

Analysis

The samples were analysed at Min-En Laboratories Ltd. in North Vancouver, for copper, silver, antimony, arsenic and gold. The samples were dried and sieved. The -80 mesh fraction was ground to -100 mesh.

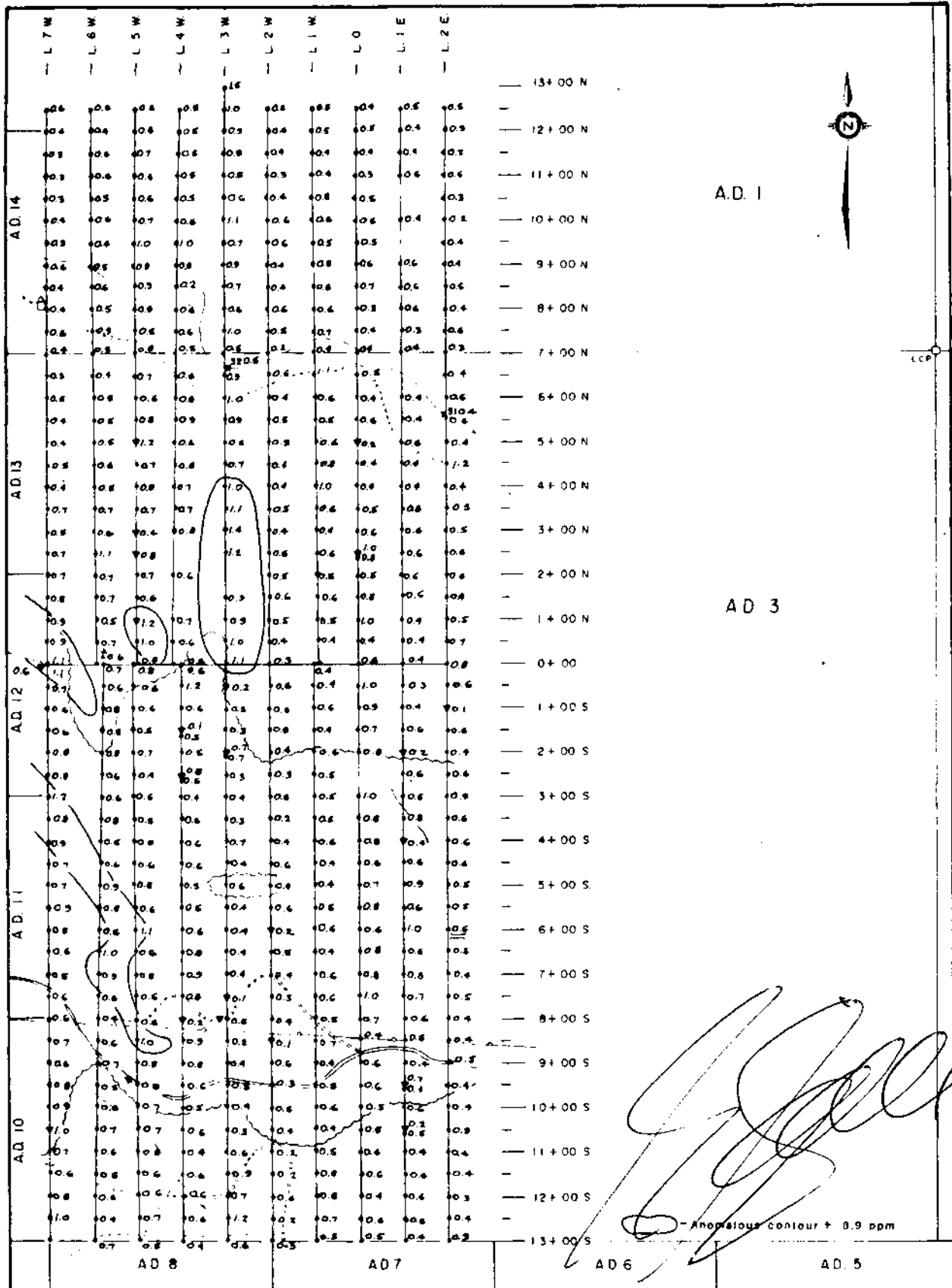
Copper and silver content was determined by multi acid dissolution and atomic absorption analysis. Antimony by multi acid aqua regia dissolution and atomic absorption analysis. Arsenic by multi acid dissolution and vapor generated atomic absorption. Gold by multi acid dissolution and net atomic absorption analysis.

Statistics

Statistical computer calculation were carried out by Sookochoff Consultants Inc.

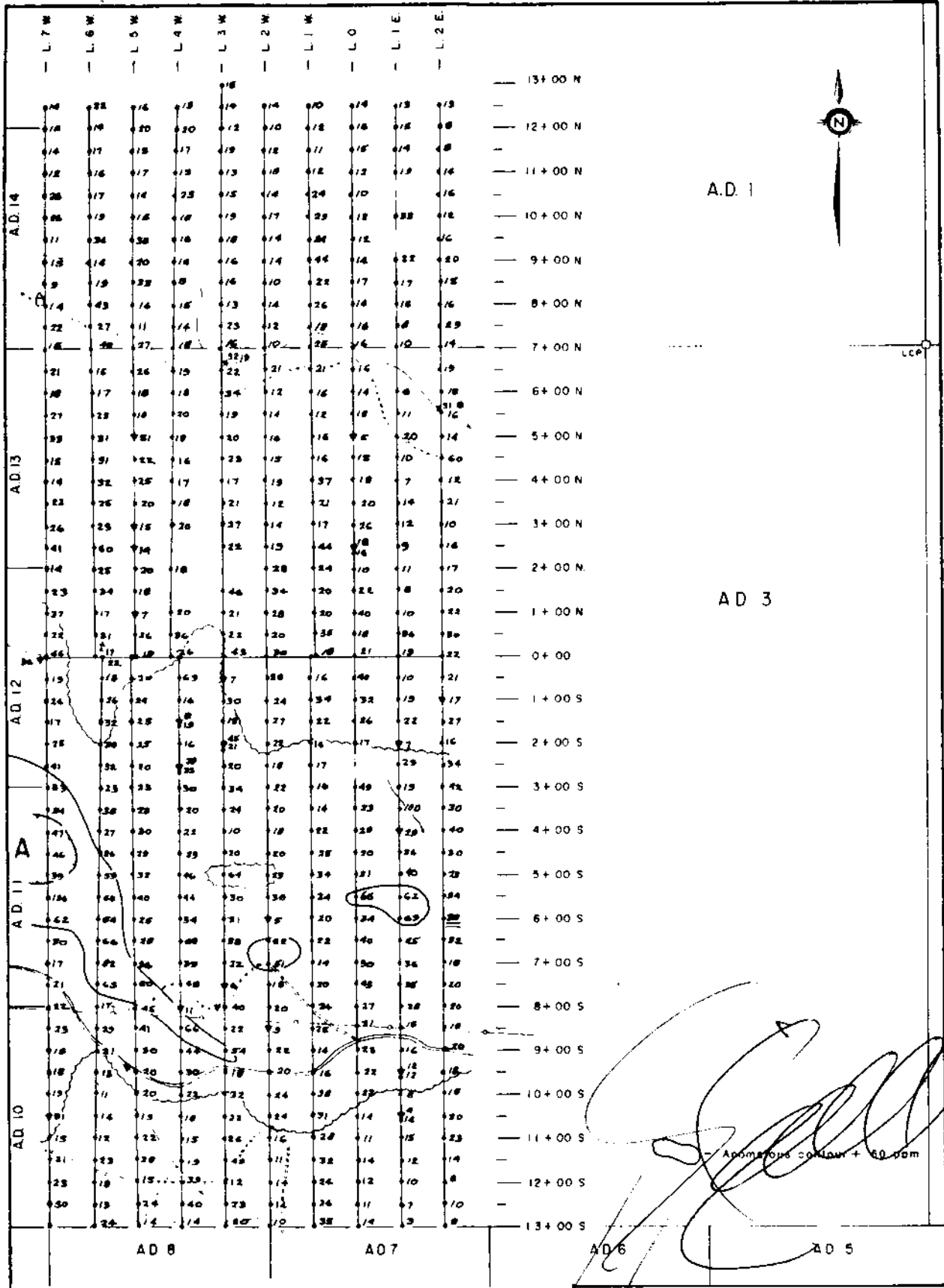
The calculations gave threshold anomalous values of +50.0 ppm for copper, +0.9 ppm for silver and +20.0 ppm for arsenic. The calculations and histograms are found in the appendix.





TOBEX RESOURCES LTD.
AD GROUP OF CLAIMS
TRAIL CREEK, BRITISH COLUMBIA, CANADA
SOIL, ROCK AND SILT
GEOCHEM SURVEY
SILVER (ppm)

LIVGARD CONSULTANTS LTD.



TOBEX RESOURCES LTD.

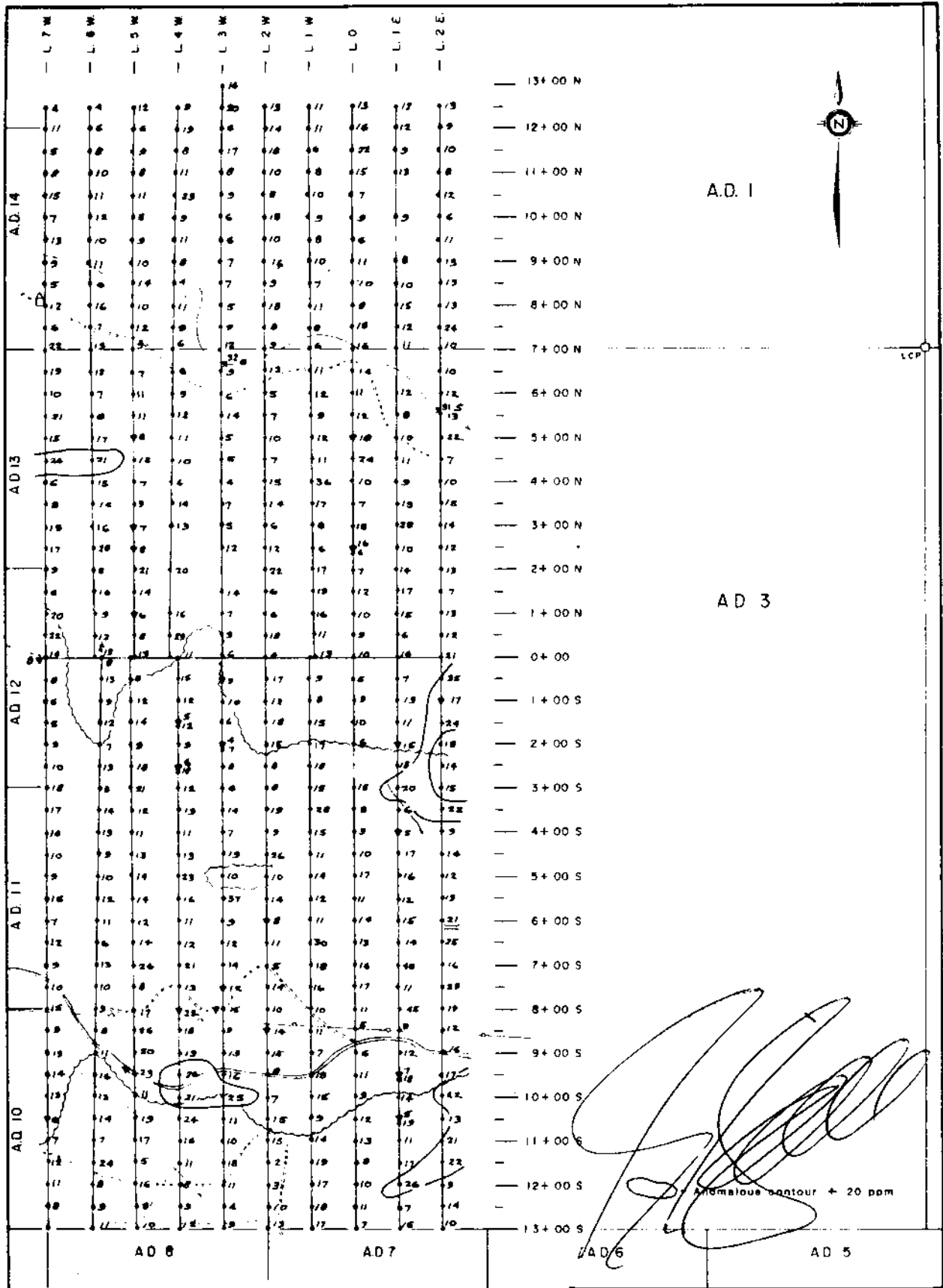
AD GROUP OF CLAIMS

TRAIL (SEEK) TRENDS (SEEK) (SEEK) (SEEK)

**SOIL, ROCK AND SILT
GEOCHEM SURVEY
COPPER (ppm)**

LIVGARD CONSULTANTS LTD.

DATE: SEPTEMBER, 1988 FIGURE NO.: 4



A.D. 1

AD 3

LEGEND

- Base Line
- Trail
- Cat Trail
- Road Access 4x4
- Hydro Line 500 kv
- Edge of Timber
- Swamp
- Gully
- Creek
- Trench
- Log House
- Soil Sample
- Rock Sample
- Silt Sample



TOBEX RESOURCES LTD.

AD GROUP OF CLAIMS

TRAIL BRIDGE CROSSING, 24.0

**SOIL, ROCK AND SILT
GEOCHEM SURVEY
ARSENIC (ppm)**

LIVGARD CONSULTANTS LTD.

DATE: SEPTEMBER, 1988

FIGURE NO.: 5

Results and Recommendations

The statistical calculations indicated that the threshold of anomalous values were:

Copper +50 ppm

Silver +0.9 ppm

Arsenic +20 ppm

The other elements, gold and antimony, have hardly any anomalous values.

The plans with individual copper, silver and arsenic values were contoured at respectively 50 ppm, 0.9 ppm and 20 ppm.

One rather low level coincident anomaly in copper-silver was outlined striking northwesterly from 3w-9s to 7w- (7s to 3s) in copper, 5w-8+50S to 7w- (4s to 3s) silver.

Other anomalies were outlined on lines 0+1E, 5+50S in copper and line (3w-0) to 4N in silver.

The anomalies are not impressive but deserve to be checked out by prospecting-geological mapping.

Respectfully submitted,



Egil Livgard, P.Eng.
Livgard Consultants



APPENDIX



LIVGARD CONSULTANTS LTD.

717 - 837 West Hastings, Vancouver, B.C. V6C 1R6 Ph. 669-2426

ANALYSIS CERTIFICATES



LIVGARD CONSULTANTS LTD.

717 - 837 West Hastings, Vancouver, B.C. V6C 1B6 Ph. 669-2426



**MIN
• EN
LABORATORIES LTD.**

SPECIALISTS IN MINERAL ENVIRONMENTS
CHEMISTS • ASSAYERS • ANALYSTS • GEOCHEMISTS

VANCOUVER OFFICE:
705 WEST 15TH STREET
NORTH VANCOUVER, B.C. CANADA V7M 1T2
TELEPHONE (604) 980-5814 OR (604) 988-4524
TELEX: VIA U.S.A. 7601067 • FAX (604) 980-9621

TIMMINS OFFICE:
33 EAST IROQUOIS ROAD
P.O. BOX 867
TIMMINS, ONTARIO CANADA P4N 7G7
TELEPHONE: (705) 264-9996

Analytical Report

Company: TOBEX RESOURCES LTD.
Project:
Attention: E. LIVGARD

File: 8-1378
Date: SEPT 20/88
Type: SOIL GEOCHEM

Date Samples Received : SEPT 28/88
Samples Submitted by : E. LIVGARD

Report on 500 SOILS, 2 SILT, 21 ROCKS..... Geochem Samples
.....
..... Assay Samples
.....

Copies sent to:
1. TOBEX RESOURCES, C/O E. LIVGARD, VANCOUVER, B.C.
2.
3.

Samples: Sieved to mesh-80..... Ground to mesh-100....

Prepared samples stored:.....X.... discarded:.....
rejects stored:..... discarded:.....X.....

Methods of analysis:
DISSOLUTION
CU AG - MULTI ACID.A.A.
SB - AQUA REGIA.A.A.
AS - VAPOR GENERATED.A.A.
AU - WET.A.A.

Remarks



**MIN-EN
LABORATORIES LTD.**

SPECIALISTS IN MINERAL ENVIRONMENTS
CHEMISTS • ASSAYERS • ANALYSTS • GEOCHEMISTS

VANCOUVER OFFICE:
705 WEST 15TH STREET
NORTH VANCOUVER, B.C. CANADA V7M 1T2
TELEPHONE (604) 980-5814 OR (604) 988-4524
TELEX: VIA U.S.A. 7801087 • FAX (604) 980-9821

TIMMINS OFFICE:
33 EAST WISCONSIN ROAD
P.O. BOX 887
TIMMINS, ONTARIO CANADA P4N 7G7
TELEPHONE: (705) 264-9988

Certificate of GEOCHEM

Company: TOBEX RESOURCES LTD.

Project:

Attention: E. LIVGARD

File: 8-1378/P1

Date: SEPT. 13/88

Type: SOIL GEOCHEM

We hereby certify the following results for samples submitted.

| Sample Number | AU-WET PPB | AG PPM | CU PPM | SB PPM | AS PPM |
|------------------|---------------|-----------|-----------|-----------|-----------|
| D18-88 LO 50S | 5 | 1.0 | 40 | 1 | 5 |
| D18-88 LO 100S | 5 | 0.9 | 32 | 1 | 9 |
| D18-88 LO 150S | 5 | 0.7 | 26 | 2 | 10 |
| D18-88 LO 200S → | 5 | 0.8 | 17 | 2 | 6 |
| D18-88 LO 300S | 5 | 1.0 | 49 | 3 | 15 |
| ----- | | | | | |
| D18-88 LO 350S | 5 | 0.8 | 23 | 1 | 8 |
| D18-88 LO 400S | 10 | 0.8 | 28 | 2 | 9 |
| D18-88 LO 450S | 5 | 0.6 | 20 | 2 | 10 |
| D18-88 LO 500S | 5 | 0.7 | 31 | 1 | 17 |
| D18-88 LO 550S | 5 | 0.8 | 65 | 3 | 11 |
| ----- | | | | | |
| D18-88 LO 600S | 5 | 0.6 | 34 | 1 | 14 |
| D18-88 LO 650S | 10 | 0.8 | 40 | 2 | 13 |
| D18-88 LO 700S | 5 | 0.8 | 30 | 2 | 16 |
| D18-88 LO 750S | 5 | 1.0 | 43 | 3 | 17 |
| D18-88 LO 800S | 5 | 0.7 | 27 | 1 | 11 |
| ----- | | | | | |
| D18-88 LO 850S | 5 | 0.4 | 21 | 1 | 5 |
| D18-88 LO 900S | 5 | 0.6 | 23 | 2 | 6 |
| D18-88 LO 950S | 5 | 0.6 | 22 | 3 | 11 |
| D18-88 LO 1000S | 5 | 0.5 | 22 | 2 | 9 |
| D18-88 LO 1050S | 5 | 0.8 | 14 | 2 | 12 |
| ----- | | | | | |
| D18-88 LO 1100S | 5 | 0.6 | 11 | 1 | 13 |
| D18-88 LO 1150S | 5 | 0.6 | 14 | 2 | 8 |
| D18-88 LO 1200S | 5 | 0.4 | 12 | 1 | 10 |
| D18-88 LO 1250S | 10 | 0.6 | 11 | 1 | 11 |
| D18-88 LO 1300S | 5 | 0.5 | 14 | 3 | 7 |
| ----- | | | | | |
| D18-88 LO 00N | 5 | 0.6 | 21 | 1 | 10 |
| D18-88 LO 50N | 5 | 0.4 | 18 | 1 | 9 |
| D18-88 LO 100N | 5 | 1.0 | 40 | 2 | 10 |
| D18-88 LO 150N | 5 | 0.8 | 22 | 1 | 12 |
| D18-88 LO 200N | 5 | 0.5 | 10 | 1 | 7 |

Certified by

MIN-EN LABORATORIES LTD.



MIN-EN LABORATORIES LTD.

SPECIALISTS IN MINERAL ENVIRONMENTS
CHEMISTS • ASSAYERS • ANALYSTS • GEOCHEMISTS

VANCOUVER OFFICE:
705 WEST 15TH STREET
NORTH VANCOUVER, B.C. CANADA V7M 1T2
TELEPHONE (604) 980-5814 OR (604) 988-4524
TELEX: VIA U.S.A. 7801087 • FAX (604) 980-0821

TIMMINS OFFICE:
33 EAST PROQUOIS ROAD
P.O. BOX 887
TIMMINS, ONTARIO CANADA P4N 7G7
TELEPHONE: (705) 264-9998

Certificate of Geochem

Company: TOBEX RESOURCES LTD.
Project:
Attention: E. LIVGARD

File: 8-1378/P2
Date: SEPT 13/88
Type: SOIL GEOCHEM

We hereby certify the following results for samples submitted.

| Sample Number | AU-WET PPB | AG PPM | CU PPM | SB PPM | AS PPM |
|-----------------|---------------|-----------|-----------|-----------|-----------|
| D18-88 L0 250N | 10 | .8 | 16 | 2 | 6 |
| D18-88 L0 300N | 5 | .6 | 26 | 1 | 18 |
| D18-88 L0 350N | 5 | .5 | 20 | 2 | 7 |
| D18-88 L0 400N | 5 | .4 | 18 | 3 | 10 |
| D18-88 L0 450N | 5 | .4 | 15 | 2 | 24 |
| ----- | | | | | |
| D18-88 L0 550N | 5 | .6 | 18 | 2 | 12 |
| D18-88 L0 600N | 5 | .4 | 14 | 1 | 11 |
| D18-88 L0 650N | 10 | .5 | 16 | 2 | 14 |
| D18-88 L0 700N | 5 | .4 | 16 | 3 | 16 |
| D18-88 L0 750N | 5 | .4 | 16 | 3 | 18 |
| ----- | | | | | |
| D18-88 L0 800N | 5 | .3 | 14 | 3 | 8 |
| D18-88 L0 850N | 5 | .7 | 17 | 1 | 10 |
| D18-88 L0 900N | 5 | .6 | 14 | 4 | 11 |
| D18-88 L0 950N | 5 | .5 | 12 | 1 | 6 |
| D18-88 L0 1000N | 5 | .6 | 12 | 2 | 9 |
| ----- | | | | | |
| D18-88 L0 1050N | 5 | .5 | 10 | 2 | 7 |
| D18-88 L0 1100N | 5 | .3 | 12 | 3 | 15 |
| D18-88 L0 1150N | 10 | .4 | 15 | 4 | 22 |
| D18-88 L0 1200N | 5 | .5 | 16 | 2 | 16 |
| D18-88 L0 1250N | 5 | .4 | 14 | 1 | 13 |
| ----- | | | | | |
| D18-88 L1E 00S | 5 | .4 | 19 | 1 | 16 |
| D18-88 L1E 50S | 5 | .3 | 10 | 1 | 7 |
| D18-88 L1E 100S | 5 | .4 | 13 | 2 | 13 |
| D18-88 L1E 150S | 5 | .6 | 22 | 4 | 11 |
| D18-88 L1E 250S | 10 | .6 | 29 | 1 | 18 |
| ----- | | | | | |
| D18-88 L1E 300S | 5 | .5 | 19 | 1 | 20 |
| D18-88 L1E 350S | 5 | .8 | 100 | 1 | 6 |
| D18-88 L1E 450S | 5 | .6 | 36 | 3 | 17 |
| D18-88 L1E 500S | 5 | .9 | 40 | 1 | 16 |
| D18-88 L1E 550S | 5 | .6 | 62 | 1 | 12 |

Certified by

MIN-EN LABORATORIES LTD.



MIN-EN LABORATORIES LTD.

SPECIALISTS IN MINERAL ENVIRONMENTS
CHEMISTS • ASSAYERS • ANALYSTS • GEOCHEMISTS

VANCOUVER OFFICE:
705 WEST 15TH STREET
NORTH VANCOUVER, B.C. CANADA V7M 1T2
TELEPHONE (604) 980-5814 OR (604) 988-4524
TELEX: VIA U.S.A. 7601067 • FAX (604) 980-9821

TIMMINS OFFICE:
33 EAST IROQUOIS ROAD
P.O. BOX 887
TIMMINS, ONTARIO CANADA P4N 7G7
TELEPHONE: (705) 264-9996

Certificate of Geochem

Company: TOBEX RESOURCES LTD.
Project:
Attention: E. LIVGARD

File: 8-1378/P3
Date: SEPT 13/88
Type: SOIL GEOCHEM

We hereby certify the following results for samples submitted.

| Sample Number | AU-WET PPB | AG PPM | CU PPM | SB PPM | AS PPM |
|------------------|------------|--------|--------|--------|--------|
| D18-88 L1E 600S | 5 | 1.0 | 69 | 3 | 15 |
| D18-88 L1E 650S | 5 | .6 | 25 | 2 | 14 |
| D18-88 L1E 700S | 5 | .8 | 36 | 2 | 48 |
| D18-88 L1E 750S | 5 | .7 | 35 | 3 | 11 |
| D18-88 L1E 800S | 5 | .6 | 28 | 1 | 45 |
| ----- | | | | | |
| D18-88 L1E 850S | 10 | .5 | 15 | 4 | 9 |
| D18-88 L1E 900S | 5 | .4 | 16 | 1 | 12 |
| D18-88 L1E 950S | 5 | .4 | 12 | 1 | 18 |
| D18-88 L1E 1000S | 5 | .6 | 8 | 1 | 14 |
| D18-88 L1E 1050S | 10 | .5 | 14 | 4 | 19 |
| ----- | | | | | |
| D18-88 L1E 1100S | 5 | .4 | 15 | 2 | 11 |
| D18-88 L1E 1150S | 5 | .6 | 12 | 2 | 17 |
| D18-88 L1E 1200S | 5 | .6 | 10 | 2 | 26 |
| D18-88 L1E 1250S | 5 | .5 | 7 | 2 | 7 |
| D18-88 L1E 1300S | 5 | .4 | 3 | 2 | 15 |
| ----- | | | | | |
| D18-88 L1E 0050N | 5 | .4 | 36 | 2 | 6 |
| D18-88 L1E 0100N | 5 | .4 | 10 | 3 | 15 |
| D18-88 L1E 0150N | 5 | .6 | 8 | 2 | 17 |
| D18-88 L1E 0200N | 10 | .6 | 11 | 1 | 14 |
| D18-88 L1E 0250N | 5 | .6 | 9 | 2 | 10 |
| ----- | | | | | |
| D18-88 L1E 0300N | 5 | .6 | 12 | 1 | 28 |
| D18-88 L1E 0350N | 5 | .8 | 14 | 2 | 15 |
| D18-88 L1E 0400N | 5 | .4 | 7 | 1 | 9 |
| D18-88 L1E 0450N | 5 | .4 | 10 | 1 | 11 |
| D18-88 L1E 0500N | 15 | .6 | 20 | 3 | 10 |
| ----- | | | | | |
| D18-88 L1E 0550N | 5 | .4 | 11 | 1 | 8 |
| D18-88 L1E 0600N | 5 | .4 | 6 | 1 | 12 |
| D18-88 L1E 0700N | 10 | .4 | 10 | 1 | 11 |
| D18-88 L1E 0750N | 5 | .3 | 8 | 1 | 12 |
| D18-88 L1E 0800N | 5 | .6 | 15 | 2 | 15 |

Certified by

MIN-EN LABORATORIES LTD.



MINERAL ENVIRONMENTAL LABORATORIES LTD.

SPECIALISTS IN MINERAL ENVIRONMENTS
CHEMISTS • ASSAYERS • ANALYSTS • GEOCHEMISTS

VANCOUVER OFFICE:
705 WEST 15TH STREET
NORTH VANCOUVER, B.C. CANADA V7M 1T2
TELEPHONE (604) 980-5814 OR (604) 988-4524
TELEX: VIA U.S.A. 7601087 • FAX (604) 980-9621

TIMMINS OFFICE:
33 EAST PRODUKIS ROAD
P.O. BOX 867
TIMMINS, ONTARIO CANADA P4N 7G7
TELEPHONE: (705) 264-9996

Certificate of Geochem

Company: TOBEX RESOURCES
Project:
Attention: E. LIVGARD

File: B-1378/P4
Date: SEPT 13/88
Type: SOIL GEOCHEM

He hereby certify the following results for samples submitted.

| Sample Number | AU-WET PPB | AG PPM | CU PPM | SB PPM | AS PPM |
|------------------|------------|--------|--------|--------|--------|
| D18-88 L1E 0850N | 5 | .6 | 17 | 1 | 10 |
| D18-88 L1E 0900N | 5 | .6 | 22 | 2 | 8 |
| D18-88 L1E 1000N | 5 | .4 | 33 | 2 | 9 |
| D18-88 L1E 1100N | 5 | .6 | 19 | 3 | 13 |
| D18-88 L1E 1150N | 5 | .4 | 14 | 2 | 9 |
| ----- | | | | | |
| D18-88 L1E 1200N | 5 | .4 | 15 | 1 | 12 |
| D18-88 L1E 1250N | 10 | .5 | 13 | 2 | 12 |
| D18-88 L1W 0050S | 5 | .4 | 16 | 3 | 9 |
| D18-88 L1W 0100S | 5 | .6 | 34 | 1 | 8 |
| D18-88 L1W 0150S | 5 | .4 | 22 | 1 | 15 |
| ----- | | | | | |
| D18-88 L1W 0200S | 5 | .6 | 14 | 3 | 17 |
| D18-88 L1W 0250S | 15 | .5 | 17 | 1 | 18 |
| D18-88 L1W 0300S | 5 | .5 | 16 | 3 | 16 |
| D18-88 L1W 0350S | 5 | .5 | 14 | 2 | 28 |
| D18-88 L1W 0400S | 5 | .6 | 22 | 1 | 15 |
| ----- | | | | | |
| D18-88 L1W 0450S | 5 | .4 | 25 | 4 | 11 |
| D18-88 L1W 0500S | 5 | .4 | 34 | 3 | 14 |
| D18-88 L1W 0550S | 10 | .5 | 24 | 1 | 12 |
| D18-88 L1W 0600S | 5 | .6 | 20 | 3 | 11 |
| D18-88 L1W 0650S | 5 | .4 | 22 | 2 | 30 |
| ----- | | | | | |
| D18-88 L1W 0700S | 5 | .6 | 14 | 1 | 18 |
| D18-88 L1W 0750S | 5 | .6 | 20 | 3 | 16 |
| D18-88 L1W 0800S | 5 | .5 | 24 | 2 | 10 |
| D18-88 L1W 0850S | 5 | .7 | 25 | 1 | 11 |
| D18-88 L1W 0900S | 5 | .4 | 14 | 1 | 7 |
| ----- | | | | | |
| D18-88 L1W 0950S | 5 | .5 | 16 | 1 | 15 |
| D18-88 L1W 1000S | 10 | .6 | 38 | 5 | 15 |
| D18-88 L1W 1050S | 5 | .4 | 31 | 1 | 9 |
| D18-88 L1W 1100S | 5 | .5 | 28 | 1 | 14 |
| D18-88 L1W 1150S | 5 | .8 | 32 | 2 | 19 |

Certified by
MINERAL ENVIRONMENTAL LABORATORIES LTD.



MIN-EN LABORATORIES LTD.

SPECIALISTS IN MINERAL ENVIRONMENTS
CHEMISTS • ASSAYERS • ANALYSTS • GEOCHEMISTS

VANCOUVER OFFICE:
706 WEST 16TH STREET
NORTH VANCOUVER, B.C. CANADA V7M 1T2
TELEPHONE (604) 980-5814 OR (604) 988-4524
TELEX: VIA U.S.A. 7901087 • FAX (604) 980-9821

TIMMINS OFFICE:
33 EAST IROQUOIS ROAD
P.O. BOX 867
TIMMINS, ONTARIO CANADA P4N 7G7
TELEPHONE: (705) 284-9996

Certificate of Geochem

Company: TOBEX RESOURCES LTD.
Project:
Attention: E. LIVGARD

File: 8-1378/P5
Date: SEPT 13/88
Type: SOIL GEOCHEM

We hereby certify the following results for samples submitted.

| Sample Number | AU-WET PPB | AG PPM | CU PPM | SB PPM | AS PPM |
|------------------|------------|--------|--------|--------|--------|
| D18-88 L1W 1200S | 5 | .8 | 24 | 1 | 17 |
| D18-88 L1W 1250S | 5 | .7 | 26 | 2 | 18 |
| D18-88 L1W 1300S | 5 | .5 | 35 | 1 | 17 |
| D18-88 L1W 0000N | 10 | .4 | 18 | 1 | 13 |
| D18-88 L1W 0050N | 5 | .4 | 35 | 3 | 11 |
| ----- | | | | | |
| D18-88 L1W 0100N | 5 | .5 | 20 | 1 | 16 |
| D18-88 L1W 0150N | 5 | .6 | 20 | 1 | 19 |
| D18-88 L1W 0200N | 5 | .5 | 24 | 4 | 17 |
| D18-88 L1W 0250N | 5 | .6 | 44 | 3 | 6 |
| D18-88 L1W 0300N | 5 | .4 | 17 | 1 | 8 |
| ----- | | | | | |
| D18-88 L1W 0350N | 5 | .6 | 21 | 1 | 17 |
| D18-88 L1W 0400N | 5 | 1.0 | 37 | 5 | 36 |
| D18-88 L1W 0450N | 10 | .8 | 16 | 1 | 11 |
| D18-88 L1W 0500N | 5 | .6 | 16 | 2 | 12 |
| D18-88 L1W 0550N | 5 | .5 | 12 | 1 | 9 |
| ----- | | | | | |
| D18-88 L1W 0600N | 5 | .6 | 16 | 3 | 12 |
| D18-88 L1W 0650N | 15 | 1.1 | 21 | 1 | 11 |
| D18-88 L1W 0700N | 5 | .4 | 25 | 1 | 6 |
| D18-88 L1W 0750N | 5 | .7 | 18 | 1 | 8 |
| D18-88 L1W 0800N | 5 | .6 | 26 | 1 | 11 |
| ----- | | | | | |
| D18-88 L1W 0850N | 10 | .6 | 22 | 1 | 7 |
| D18-88 L1W 0900N | 5 | .8 | 44 | 3 | 10 |
| D18-88 L1W 0950N | 5 | .5 | 24 | 4 | 8 |
| D18-88 L1W 1000N | 5 | .6 | 29 | 1 | 9 |
| D18-88 L1W 1050N | 5 | .8 | 24 | 1 | 10 |
| ----- | | | | | |
| D18-88 L1W 1100N | 5 | .6 | 12 | 3 | 8 |
| D18-88 L1W 1150N | 5 | .4 | 11 | 1 | 6 |
| D18-88 L1W 1200N | 10 | .5 | 12 | 4 | 11 |
| D18-88 L1W 1250N | 5 | .5 | 10 | 2 | 11 |
| D18-88 L2E 0000S | 5 | .8 | 22 | 1 | 21 |

Certified by

MIN-EN LABORATORIES LTD.



**MIN-EN
LABORATORIES LTD.**

SPECIALISTS IN MINERAL ENVIRONMENTS
CHEMISTS • ASSAYERS • ANALYSTS • GEOCHEMISTS

VANCOUVER OFFICE:
705 WEST 15TH STREET
NORTH VANCOUVER, B.C. CANADA V7M 1T2
TELEPHONE (604) 980-5814 OR (604) 988-4524
TELEX: VIA U.S.A. 7601087 • FAX (604) 980-8621

TIMMINS OFFICE:
33 EAST IROQUOIS ROAD
P.O. BOX 867
TIMMINS, ONTARIO CANADA P4N 7G7
TELEPHONE: (705) 264-9998

Certificate of Geochem

Company: TOBEX RESOURCES LTD.
Project:
Attention: E. LIVGARD

File: 8-1378/P6
Date: SEPT 13/88
Type: SOIL GEOCHEM

We hereby certify the following results for samples submitted.

| Sample Number | AU-WET PPB | AG PPM | CU PPM | SB PPM | AS PPM |
|------------------|------------|--------|--------|--------|--------|
| D18-88 L2E 0050S | 5 | .6 | 21 | 1 | 35 |
| D18-88 L2E 0150S | 5 | .6 | 27 | 2 | 24 |
| D18-88 L2E 0200S | 5 | .4 | 16 | 2 | 18 |
| D18-88 L2E 0250S | 10 | .6 | 34 | 2 | 14 |
| D18-88 L2E 0300S | 5 | .9 | 42 | 3 | 15 |
| ----- | | | | | |
| D18-88 L2E 0350S | 5 | .6 | 30 | 4 | 22 |
| D18-88 L2E 0400S | 5 | .6 | 40 | 2 | 9 |
| D18-88 L2E 0450S | 5 | .6 | 30 | 3 | 14 |
| D18-88 L2E 0500S | 5 | .5 | 23 | 2 | 12 |
| D18-88 L2E 0550S | 5 | .5 | 34 | 3 | 13 |
| ----- | | | | | |
| D18-88 L2E 0600S | 5 | .6 | 39 | 2 | 21 |
| D18-88 L2E 0650S | 5 | .5 | 32 | 3 | 25 |
| D18-88 L2E 0700S | 10 | .4 | 18 | 1 | 16 |
| D18-88 L2E 0750S | 5 | .5 | 20 | 2 | 29 |
| D18-88 L2E 0800S | 5 | .4 | 20 | 1 | 19 |
| ----- | | | | | |
| D18-88 L2E 0850S | 5 | .4 | 18 | 2 | 12 |
| D18-88 L2E 0900S | 5 | .5 | 20 | 4 | 16 |
| D18-88 L2E 0950S | 5 | .4 | 18 | 1 | 17 |
| D18-88 L2E 1000S | 10 | .4 | 18 | 2 | 22 |
| D18-88 L2E 1050S | 5 | .3 | 30 | 3 | 13 |
| ----- | | | | | |
| D18-88 L2E 1100S | 5 | .4 | 23 | 1 | 21 |
| D18-88 L2E 1150S | 5 | .4 | 14 | 5 | 22 |
| D18-88 L2E 1200S | 5 | .3 | 8 | 7 | 9 |
| D18-88 L2E 1250S | 5 | .4 | 10 | 2 | 14 |
| D18-88 L2E 1300S | 10 | .3 | 8 | 1 | 10 |
| ----- | | | | | |
| D18-88 L2E 0050N | 5 | .7 | 30 | 4 | 12 |
| D18-88 L2E 0100N | 5 | .5 | 22 | 3 | 13 |
| D18-88 L2E 0150N | 5 | .4 | 20 | 1 | 7 |
| D18-88 L2E 0200N | 5 | .6 | 17 | 1 | 13 |
| D18-88 L2E 0250N | 5 | .6 | 16 | 5 | 12 |

Certified by _____

MIN-EN LABORATORIES LTD.



**MINERAL
ENVIRONMENTAL
LABORATORIES LTD.**

SPECIALISTS IN MINERAL ENVIRONMENTS
CHEMISTS • ASSAYERS • ANALYSTS • GEOCHEMISTS

VANCOUVER OFFICE:
705 WEST 15TH STREET
NORTH VANCOUVER, B.C. CANADA V7M 1T2
TELEPHONE (604) 980-5814 OR (604) 988-4524
TELEX: VIA U.S.A. 7601087 • FAX (604) 980-9821

TIMMINS OFFICE:
33 EAST WOODS ROAD
P.O. BOX 887
TIMMINS, ONTARIO CANADA P4N 7G7
TELEPHONE: (705) 264-9996

Certificate of Geochem

Company: TOBEX RESOURCES LTD.
Project:
Attention: E. LIVGARD

File: 8-1378/P7
Date: SEPT 13/88
Type: SOIL GEOCHEM

We hereby certify the following results for samples submitted.

| Sample Number | AU-WET PPB | AG PPM | CU PPM | SB PPM | AS PPM |
|------------------|---------------|-----------|-----------|-----------|-----------|
| D18-88 L2E 0300N | 5 | .5 | 10 | 1 | 14 |
| D18-88 L2E 0350N | 5 | .5 | 21 | 3 | 15 |
| D18-88 L2E 0400N | 5 | .4 | 12 | 1 | 10 |
| D18-88 L2E 0450N | 10 | 1.2 | 60 | 1 | 7 |
| D18-88 L2E 0500N | 5 | .4 | 14 | 3 | 22 |
| ----- | | | | | |
| D18-88 L2E 0550N | 10 | .6 | 16 | 1 | 13 |
| D18-88 L2E 0600N | 5 | .6 | 18 | 2 | 12 |
| D18-88 L2E 0650N | 5 | .4 | 19 | 3 | 10 |
| D18-88 L2E 0700N | 5 | .3 | 14 | 2 | 10 |
| D18-88 L2E 0750N | 5 | .6 | 29 | 1 | 24 |
| ----- | | | | | |
| D18-88 L2E 0800N | 5 | .4 | 16 | 1 | 13 |
| D18-88 L2E 0850N | 10 | .5 | 15 | 2 | 19 |
| D18-88 L2E 0900N | 5 | .4 | 20 | 1 | 13 |
| D18-88 L2E 0950N | 5 | .4 | 16 | 1 | 11 |
| D18-88 L2E 1000N | 5 | .2 | 12 | 1 | 6 |
| ----- | | | | | |
| D18-88 L2E 1050N | 5 | .3 | 16 | 3 | 12 |
| D18-88 L2E 1100N | 5 | .6 | 14 | 1 | 8 |
| D18-88 L2E 1150N | 10 | .2 | 6 | 2 | 10 |
| D18-88 L2E 1200N | 5 | .3 | 8 | 2 | 9 |
| D18-88 L2E 1250N | 5 | .5 | 13 | 1 | 13 |
| ----- | | | | | |
| D18-88 L2W 0050S | 5 | .6 | 38 | 5 | 17 |
| D18-88 L2W 0100S | 5 | .6 | 24 | 1 | 12 |
| D18-88 L2W 0150S | 5 | .8 | 27 | 3 | 18 |
| D18-88 L2W 0200S | 10 | .4 | 22 | 1 | 15 |
| D18-88 L2W 0250S | 5 | .3 | 18 | 1 | 8 |
| ----- | | | | | |
| D18-88 L2W 0300S | 5 | .6 | 22 | 5 | 8 |
| D18-88 L2W 0350S | 5 | .2 | 20 | 2 | 19 |
| D18-88 L2W 0400S | 5 | .4 | 18 | 1 | 9 |
| D18-88 L2W 0450S | 5 | .6 | 20 | 1 | 26 |
| D18-88 L2W 0500S | 5 | .4 | 23 | 1 | 10 |

Certified by



**MIN-EN
LABORATORIES LTD.**

SPECIALISTS IN MINERAL ENVIRONMENTS
CHEMISTS • ASSAYERS • ANALYSTS • GEOCHEMISTS

VANCOUVER OFFICE:
705 WEST 15TH STREET
NORTH VANCOUVER, B.C. CANADA V7M 1T2
TELEPHONE (604) 980-5814 OR (604) 988-4524
TELEX: VIA U.S.A. 7801087 • FAX (604) 980-9921

TIMMINS OFFICE:
33 EAST IROQUOIS ROAD
P.O. BOX 867
TIMMINS, ONTARIO CANADA P4N 7G7
TELEPHONE: (705) 264-9998

Certificate of Geochem

Company: TOBEX RESOURCES LTD.
Project:
Attention: E. LIVGARD

File: 8-1378/P8
Date: SEPT 13/88
Type: SOIL GEOCHEM

We hereby certify the following results for samples submitted.

| Sample Number | AU-WET PPB | AG PPM | CU PPM | SB PPM | AS PPM |
|------------------|---------------|-----------|-----------|-----------|-----------|
| D18-88 L2W 0550S | 5 | .6 | 38 | 1 | 14 |
| D18-88 L2W 0650S | 5 | .5 | 62 | 2 | 11 |
| D18-88 L2W 0700S | 5 | .4 | 51 | 1 | 5 |
| D18-88 L2W 0750S | 5 | .3 | 18 | 1 | 14 |
| D18-88 L2W 0800S | 5 | .4 | 20 | 2 | 10 |
| ----- | | | | | |
| D18-88 L2W 0900S | 10 | .6 | 22 | 2 | 15 |
| D18-88 L2W 0950S | 5 | .3 | 20 | 1 | 8 |
| D18-88 L2W 1000S | 5 | .5 | 24 | 4 | 7 |
| D18-88 L2W 1050S | 5 | .4 | 24 | 1 | 15 |
| D18-88 L2W 1100S | 5 | .2 | 16 | 1 | 15 |
| ----- | | | | | |
| D18-88 L2W 1150S | 5 | .2 | 11 | 2 | 2 |
| D18-88 L2W 1200S | 5 | .4 | 14 | 3 | 3 |
| D18-88 L2W 1250S | 5 | .2 | 14 | 1 | 10 |
| D18-88 L2W 1300S | 5 | .3 | 10 | 1 | 13 |
| D18-88 L2W 0000N | 5 | .3 | 30 | 1 | 6 |
| ----- | | | | | |
| D18-88 L2W 0050N | 10 | .4 | 20 | 2 | 18 |
| D18-88 L2W 0100N | 5 | .5 | 28 | 2 | 6 |
| D18-88 L2W 0150N | 5 | .6 | 34 | 2 | 6 |
| D18-88 L2W 0200N | 5 | .5 | 28 | 1 | 22 |
| D18-88 L2W 0250N | 5 | .5 | 19 | 1 | 12 |
| ----- | | | | | |
| D18-88 L2W 0300N | 5 | .4 | 14 | 1 | 6 |
| D18-88 L2W 0350N | 5 | .5 | 12 | 1 | 14 |
| D18-88 L2W 0400N | 5 | .4 | 19 | 1 | 15 |
| D18-88 L2W 0450N | 5 | .4 | 15 | 2 | 7 |
| D18-88 L2W 0500N | 10 | .5 | 16 | 3 | 10 |
| ----- | | | | | |
| D18-88 L2W 0550N | 5 | .5 | 14 | 2 | 7 |
| D18-88 L2W 0600N | 5 | .4 | 12 | 2 | 5 |
| D18-88 L2W 0650N | 5 | .6 | 21 | 4 | 12 |
| D18-88 L2W 0700N | 5 | .2 | 10 | 1 | 9 |
| D18-88 L2W 0750N | 5 | .5 | 12 | 1 | 8 |

Certified by _____

[Signature]
MIN-EN LABORATORIES LTD.



**MINERALS
ENVIRONMENTAL
LABORATORIES LTD.**

SPECIALISTS IN MINERAL ENVIRONMENTS
CHEMISTS • ASSAYERS • ANALYSTS • GEOCHEMISTS

VANCOUVER OFFICE:
705 WEST 15TH STREET
NORTH VANCOUVER, B.C. CANADA V7M 1T2
TELEPHONE (604) 980-5814 OR (604) 988-4524
TELEX: VIA U.S.A. 7801087 • FAX (604) 980-9821

TIMMINS OFFICE:
33 EAST IROQUOIS ROAD
P.O. BOX 867
TIMMINS, ONTARIO CANADA P4N 7G7
TELEPHONE: (705) 284-9998

Certificate of Geochem

Company: **TUBEX RESOURCES LTD.**

Project:

Attention: **E. LIVGARD**

File: **8-1378/P9**

Date: **SEPT 16/88**

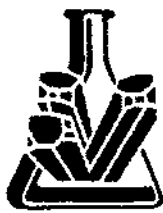
Type: **SOIL GEOCHEM**

We hereby certify the following results for samples submitted.

| Sample Number | AU-WET PPB | AG PPM | CU PPM | SB PPM | AS PPM |
|------------------|---------------|-----------|-----------|-----------|-----------|
| D18-88 L2W 0800N | 5 | .6 | 14 | 1 | 18 |
| D18-88 L2W 0850N | 5 | .4 | 10 | 2 | 9 |
| D18-88 L2W 0900N | 5 | .4 | 14 | 1 | 16 |
| D18-88 L2W 0950N | 5 | .6 | 14 | 2 | 10 |
| D18-88 L2W 1000N | 5 | .6 | 17 | 2 | 18 |
| ----- | | | | | |
| D18-88 L2W 1050N | 5 | .4 | 14 | 2 | 8 |
| D18-88 L2W 1100N | 5 | .3 | 18 | 2 | 10 |
| D18-88 L2W 1150N | 25 | .4 | 12 | 1 | 18 |
| D18-88 L2W 1200N | 5 | .4 | 10 | 3 | 14 |
| D18-88 L2W 1250N | 5 | .6 | 14 | 4 | 13 |
| ----- | | | | | |
| D18-88 L3W 0100S | 5 | .5 | 30 | 1 | 10 |
| D18-88 L3W 0150S | 5 | .3 | 18 | 2 | 6 |
| D18-88 L3W 0200S | 5 | .7 | 21 | 2 | 7 |
| D18-88 L3W 0250S | 5 | .3 | 20 | 1 | 8 |
| D18-88 L3W 0300S | 10 | .4 | 34 | 2 | 6 |
| ----- | | | | | |
| D18-88 L3W 0350S | 5 | .3 | 24 | 3 | 14 |
| D18-88 L3W 0400S | 5 | .7 | 108 | 1 | 7 |
| D18-88 L3W 0450S | 5 | .4 | 20 | 1 | 19 |
| D18-88 L3W 0500S | 5 | .6 | 64 | 2 | 10 |
| D18-88 L3W 0550S | 5 | .4 | 30 | 1 | 37 |
| ----- | | | | | |
| D18-88 L3W 0600S | 10 | .4 | 31 | 3 | 9 |
| D18-88 L3W 0650S | 5 | .4 | 38 | 1 | 12 |
| D18-88 L3W 0700S | 5 | .4 | 22 | 2 | 14 |
| D18-88 L3W 0800S | 5 | .5 | 40 | 1 | 15 |
| D18-88 L3W 0850S | 5 | .2 | 22 | 2 | 9 |
| ----- | | | | | |
| D18-88 L3W 0900S | 5 | .4 | 54 | 1 | 13 |
| D18-88 L3W 0950S | 5 | .3 | 18 | 1 | 16 |
| D18-88 L3W 1000S | 5 | .4 | 32 | 2 | 25 |
| D18-88 L3W 1050S | 5 | .3 | 22 | 1 | 11 |
| D18-88 L3W 1100S | 5 | .6 | 26 | 1 | 10 |

Certified by

MINERALS ENVIRONMENTAL LABORATORIES LTD.



**MIN-EN
LABORATORIES LTD.**

SPECIALISTS IN MINERAL ENVIRONMENTS
CHEMISTS • ASSAYERS • ANALYSTS • GEOCHEMISTS

VANCOUVER OFFICE:
705 WEST 15TH STREET
NORTH VANCOUVER, B.C. CANADA V7M 1T2
TELEPHONE (604) 980-5814 OR (604) 988-4524
TELEX: VIA U.S.A. 7801067 • FAX (604) 980-9621

TIMMINS OFFICE:
33 EAST IROQUOIS ROAD
P.O. BOX 887
TIMMINS, ONTARIO CANADA P4N 7G7
TELEPHONE: (705) 284-9996

Certificate of Geochem

Company: TOBEX RESOURCES LTD.
Project:
Attention: E. LIVGARD

File: 8-1378/P10
Date: SEPT. 16/88
Type: SOIL GEOCHEM

We hereby certify the following results for samples submitted.

| Sample Number | AU-WET PPB | AG PPM | CU PPM | SB PPM | AS PPM |
|------------------|------------|--------|--------|--------|--------|
| D18-88 L3W 1150S | 5 | 0.9 | 49 | 1 | 18 |
| D18-88 L3W 1200S | 10 | 0.7 | 12 | 1 | 11 |
| D18-88 L3W 1250S | 5 | 1.2 | 23 | 1 | 4 |
| D18-88 L3W 1300S | 5 | 0.6 | 20 | 2 | 9 |
| D18-88 L3W 0000N | 5 | 1.1 | 43 | 1 | 6 |
| ----- | | | | | |
| D18-88 L3W 0050N | 5 | 1.0 | 22 | 1 | 3 |
| D18-88 L3W 0100N | 5 | 0.9 | 21 | 1 | 7 |
| D18-88 L3W 0150N | 5 | 0.9 | 46 | 2 | 14 |
| D18-88 L3W 0250N | 5 | 1.2 | 22 | 2 | 12 |
| D18-88 L3W 0300N | 5 | 1.4 | 27 | 2 | 5 |
| ----- | | | | | |
| D18-88 L3W 0350N | 10 | 1.1 | 21 | 1 | 7 |
| D18-88 L3W 0400N | 5 | 1.0 | 17 | 1 | 4 |
| D18-88 L3W 0450N | 5 | 0.7 | 23 | 2 | 5 |
| D18-88 L3W 0500N | 5 | 0.6 | 20 | 1 | 5 |
| D18-88 L3W 0550N | 5 | 0.9 | 19 | 1 | 14 |
| ----- | | | | | |
| D18-88 L3W 0600N | 5 | 1.0 | 34 | 2 | 6 |
| D18-88 L3W 0650N | 5 | 0.9 | 22 | 1 | 9 |
| D18-88 L3W 0700N | 10 | 0.5 | 16 | 2 | 12 |
| D18-88 L3W 0750N | 5 | 1.0 | 23 | 1 | 9 |
| D18-88 L3W 0800N | 5 | 0.6 | 13 | 3 | 5 |
| ----- | | | | | |
| D18-88 L3W 0850N | 5 | 0.7 | 16 | 1 | 7 |
| D18-88 L3W 0900N | 5 | 0.9 | 16 | 1 | 7 |
| D18-88 L3W 0950N | 5 | 0.7 | 18 | 1 | 6 |
| D18-88 L3W 1000N | 5 | 1.1 | 19 | 1 | 6 |
| D18-88 L3W 1050N | 5 | 0.6 | 15 | 2 | 9 |
| ----- | | | | | |
| D18-88 L3W 1100N | 5 | 0.5 | 13 | 2 | 8 |
| D18-88 L3W 1150N | 10 | 0.8 | 19 | 1 | 17 |
| D18-88 L3W 1200N | 5 | 0.9 | 12 | 1 | 6 |
| D18-88 L3W 1250N | 5 | 1.0 | 14 | 2 | 20 |
| D18-88 L3W 1300N | 5 | 1.5 | 15 | 1 | 14 |

Certified by _____

MIN-EN LABORATORIES LTD.



**MIN-EN
LABORATORIES LTD.**

SPECIALISTS IN MINERAL ENVIRONMENTS
CHEMISTS • ASSAYERS • ANALYSTS • GEOCHEMISTS

VANCOUVER OFFICE:
705 WEST 15TH STREET
NORTH VANCOUVER, B.C. CANADA V7M 1T2
TELEPHONE (604) 980-5814 OR (604) 988-4524
TELEX: VIA U.S.A. 7601067 • FAX (604) 980-9821

TIMMINS OFFICE:
33 EAST IROQUOIS ROAD
P.O. BOX 867
TIMMINS, ONTARIO CANADA P4N 7G7
TELEPHONE: (705) 264-9996

Certificate of Geochem

Company: TOBEX RESOURCES LTD.
Project:
Attention: E. LIVGARD

File: 8-1378/P11
Date: SEPT 20/88
Type: SOIL GEOCHEM

We hereby certify the following results for samples submitted.

| Sample Number | AU-WET PPB | AG PPM | CU PPM | SB PPM | AS PPM |
|------------------|---------------|-----------|-----------|-----------|-----------|
| D18-88 L4W 0050S | 10 | 1.2 | 69 | 1 | 15 |
| D18-88 L4W 0100S | 5 | 0.6 | 16 | 4 | 12 |
| D18-88 L4W 0150S | 5 | 0.5 | 19 | 2 | 12 |
| D18-88 L4W 0200S | 5 | 0.5 | 16 | 1 | 9 |
| D18-88 L4W 0250S | 5 | 0.6 | 35 | 2 | 18 |
| D18-88 L4W 0300S | 5 | 0.4 | 30 | 1 | 12 |
| D18-88 L4W 0350S | 5 | 0.6 | 20 | 1 | 13 |
| D18-88 L4W 0400S | 5 | 0.6 | 22 | 2 | 11 |
| D18-88 L4W 0450S | 5 | 0.6 | 23 | 1 | 13 |
| D18-88 L4W 0500S | 15 | 0.5 | 46 | 2 | 23 |
| D18-88 L4W 0550S | 5 | 0.5 | 44 | 1 | 16 |
| D18-88 L4W 0600S | 5 | 0.6 | 34 | 1 | 11 |
| D18-88 L4W 0650S | 5 | 0.8 | 68 | 1 | 12 |
| D18-88 L4W 0700S | 5 | 0.9 | 39 | 1 | 21 |
| D18-88 L4W 0750S | 5 | 0.8 | 48 | 1 | 13 |
| D18-88 L4W 0850S | 5 | 0.9 | 66 | 1 | 18 |
| D18-88 L4W 0900S | 10 | 0.8 | 44 | 2 | 19 |
| D18-88 L4W 0950S | 5 | 0.6 | 30 | 2 | 26 |
| D18-88 L4W 1000S | 5 | 0.5 | 22 | 2 | 21 |
| D18-88 L4W 1050S | 5 | 0.6 | 18 | 1 | 24 |
| D18-88 L4W 1100S | 5 | 0.4 | 15 | 1 | 15 |
| D18-88 L4W 1150S | 5 | 0.6 | 19 | 2 | 11 |
| D18-88 L4W 1200S | 5 | 0.6 | 39 | 2 | 8 |
| D18-88 L4W 1250S | 5 | 0.6 | 40 | 1 | 9 |
| D18-88 L4W 1300S | 5 | 0.4 | 14 | 1 | 12 |
| D18-88 L4W 0000N | 10 | 0.6 | 26 | 2 | 11 |
| D18-88 L4W 0050N | 5 | 0.6 | 36 | 2 | 23 |
| D18-88 L4W 0100N | 5 | 0.7 | 20 | 2 | 16 |
| D18-88 L4W 0200N | 5 | 0.6 | 18 | 1 | 20 |
| D18-88 L4W 0300N | 15 | 0.8 | 20 | 2 | 13 |

Certified by

MIN-EN LABORATORIES LTD.



**MIN-EN
LABORATORIES LTD.**

SPECIALISTS IN MINERAL ENVIRONMENTS
CHEMISTS • ASSAYERS • ANALYSTS • GEOCHEMISTS

VANCOUVER OFFICE:
705 WEST 15TH STREET
NORTH VANCOUVER, B.C. CANADA V7M 1T2
TELEPHONE (604) 980-5814 OR (604) 988-4524
TELEX: VIA U.S.A. 7601067 • FAX (604) 980-9621

TIMMINS OFFICE:
33 EAST IROQUOIS ROAD
P.O. BOX 867
TIMMINS, ONTARIO CANADA P4N 7G7
TELEPHONE: (705) 264-9996

Certificate of Geochem

Company: TOBEX RESOURCES LTD.
Project:
Attention: E.LIVGARD

File: 8-1378/P12
Date: SEPT 20/88
Type: SOIL GEOCHEM

We hereby certify the following results for samples submitted.

| Sample Number | AU-WET PPB | AG PPM | CU PPM | SB PPM | AS PPM |
|------------------|------------|--------|--------|--------|--------|
| D18-88 L4W 0350N | 5 | 0.7 | 18 | 2 | 14 |
| D18-88 L4W 0400N | 5 | 0.7 | 17 | 2 | 6 |
| D18-88 L4W 0450N | 5 | 0.8 | 16 | 1 | 10 |
| D18-88 L4W 0500N | 5 | 0.6 | 18 | 1 | 11 |
| D18-88 L4W 0550N | 10 | 0.9 | 20 | 1 | 12 |
| ----- | | | | | |
| D18-88 L4W 0600N | 5 | 0.8 | 18 | 2 | 9 |
| D18-88 L4W 0650N | 5 | 0.6 | 19 | 1 | 8 |
| D18-88 L4W 0700N | 5 | 0.5 | 18 | 2 | 6 |
| D18-88 L4W 0750N | 5 | 0.6 | 14 | 1 | 9 |
| D18-88 L4W 0800N | 10 | 0.6 | 15 | 1 | 11 |
| ----- | | | | | |
| D18-88 L4W 0850N | 5 | 0.2 | 8 | 1 | 4 |
| D18-88 L4W 0900N | 5 | 0.8 | 16 | 2 | 8 |
| D18-88 L4W 0950N | 5 | 1.0 | 16 | 1 | 11 |
| D18-88 L4W 1000N | 5 | 0.6 | 18 | 2 | 9 |
| D18-88 L4W 1050N | 5 | 0.5 | 25 | 1 | 23 |
| ----- | | | | | |
| D18-88 L4W 1100N | 5 | 0.5 | 15 | 2 | 11 |
| D18-88 L4W 1150N | 5 | 0.5 | 17 | 1 | 8 |
| D18-88 L4W 1200N | 5 | 0.5 | 20 | 1 | 19 |
| D18-88 L4W 1250N | 5 | 0.5 | 13 | 1 | 9 |
| D18-88 L5W 0050S | 5 | 0.6 | 20 | 1 | 8 |
| ----- | | | | | |
| D18-88 L5W 0100S | 5 | 0.6 | 24 | 2 | 12 |
| D18-88 L5W 0150S | 5 | 0.5 | 25 | 2 | 14 |
| D18-88 L5W 0200S | 5 | 0.7 | 25 | 1 | 9 |
| D18-88 L5W 0250S | 10 | 0.4 | 20 | 1 | 18 |
| D18-88 L5W 0300S | 5 | 0.6 | 25 | 2 | 21 |
| ----- | | | | | |
| D18-88 L5W 0350S | 5 | 0.5 | 28 | 1 | 12 |
| D18-88 L5W 0400S | 5 | 0.8 | 30 | 1 | 11 |
| D18-88 L5W 0450S | 5 | 0.6 | 29 | 1 | 13 |
| D18-88 L5W 0500S | 5 | 0.8 | 32 | 2 | 14 |
| D18-88 L5W 0550S | 5 | 0.6 | 40 | 2 | 14 |

Certified by

MIN-EN LABORATORIES LTD.



**MIN
• EN
LABORATORIES LTD.**

SPECIALISTS IN MINERAL ENVIRONMENTS
CHEMISTS • ASSAYERS • ANALYSTS • GEOCHEMISTS

VANCOUVER OFFICE:
705 WEST 15TH STREET
NORTH VANCOUVER, B.C. CANADA V7M 1T2
TELEPHONE (604) 980-5814 OR (604) 988-4524
TELEX: VIA U.S.A. 7601067 • FAX (604) 980-9621

TIMMINS OFFICE:
33 EAST IROQUOIS ROAD
P.O. BOX 867
TIMMINS, ONTARIO CANADA P4N 7G7
TELEPHONE: (705) 264-9996

Certificate of Geochem

Company: TOBEX RESOURCES LTD.
Project:
Attention: E. LIVGARD

File: 8-1378/P13
Date: SEPT 20/88
Type: SOIL GEOCHEM

We hereby certify the following results for samples submitted.

| Sample Number | AU-WET FPB | AG PPM | CU PPM | SB PPM | AS PPM |
|------------------|---------------|-----------|-----------|-----------|-----------|
| D18-88 L5W 0600S | 5 | 1.1 | 25 | 1 | 12 |
| D18-88 L5W 0650S | 5 | 0.6 | 28 | 3 | 14 |
| D18-88 L5W 0700S | 10 | 0.8 | 36 | 1 | 26 |
| D18-88 L5W 0750S | 5 | 0.5 | 50 | 1 | 8 |
| D18-88 L5W 0800S | 5 | 0.6 | 45 | 1 | 17 |
| ----- | | | | | |
| D18-88 L5W 0850S | 5 | 1.0 | 41 | 2 | 26 |
| D18-88 L5W 0900S | 5 | 0.8 | 30 | 1 | 20 |
| D18-88 L5W 0950S | 5 | 0.8 | 20 | 3 | 23 |
| D18-88 L5W 1000S | 5 | 0.7 | 20 | 3 | 11 |
| D18-88 L5W 1050S | 10 | 0.7 | 19 | 3 | 19 |
| ----- | | | | | |
| D18-88 L5W 1100S | 5 | 0.8 | 22 | 4 | 17 |
| D18-88 L5W 1150S | 5 | 0.6 | 28 | 2 | 15 |
| D18-88 L5W 1200S | 5 | 0.6 | 15 | 2 | 16 |
| D18-88 L5W 1250S | 5 | 0.7 | 24 | 1 | 8 |
| D18-88 L5W 1300S | 5 | 0.5 | 14 | 1 | 10 |
| ----- | | | | | |
| D18-88 L5W 0000N | 5 | 0.8 | 19 | 1 | 13 |
| D18-88 L5W 0050N | 5 | 1.0 | 26 | 3 | 8 |
| D18-88 L5W 0150N | 5 | 0.6 | 18 | 3 | 14 |
| D18-88 L5W 0200N | 5 | 0.7 | 20 | 3 | 21 |
| D18-88 L5W 0350N | 5 | 0.7 | 20 | 2 | 9 |
| ----- | | | | | |
| D18-88 L5W 0400N | 5 | 0.8 | 25 | 5 | 7 |
| D18-88 L5W 0450N | 5 | 0.7 | 22 | 1 | 12 |
| D18-88 L5W 0550N | 5 | 0.8 | 18 | 2 | 11 |
| D18-88 L5W 0600N | 5 | 0.6 | 18 | 1 | 11 |
| D18-88 L5W 0650N | 10 | 0.7 | 26 | 3 | 7 |
| ----- | | | | | |
| D18-88 L5W 0700N | 5 | 0.8 | 27 | 2 | 9 |
| D18-88 L5W 0750N | 5 | 0.5 | 11 | 2 | 12 |
| D18-88 L5W 0800N | 5 | 0.8 | 14 | 2 | 10 |
| D18-88 L5W 0850N | 5 | 0.9 | 23 | 1 | 14 |
| D18-88 L5W 0900N | 5 | 0.8 | 20 | 1 | 10 |

Certified by _____


MIN-EN LABORATORIES LTD.



**MIN
• EN
LABORATORIES LTD.**

SPECIALISTS IN MINERAL ENVIRONMENTS
CHEMISTS • ASSAYERS • ANALYSTS • GEOCHEMISTS

VANCOUVER OFFICE:
705 WEST 15TH STREET
NORTH VANCOUVER, B.C. CANADA V7M 1T2
TELEPHONE (604) 980-5814 OR (604) 988-4524
TELEX: VIA U.S.A. 7601067 • FAX (604) 980-9621

TIMMINS OFFICE:
33 EAST IROQUOIS ROAD
P.O. BOX 867
TIMMINS, ONTARIO CANADA P4N 7G7
TELEPHONE: (705) 264-9996

Certificate of Geochem

Company: TOBEX RESOURCES LTD.
Project:
Attention: E. LIVGARD

File: 8-1378/P14
Date: SEPT 20/88
Type: SOIL GEOCHEM

We hereby certify the following results for samples submitted.

| Sample Number | AU-WET PPB | AG PPM | CU PPM | SB PPM | AS PPM |
|------------------|------------|--------|--------|--------|--------|
| D18-88 L5W 0950N | 5 | 1.0 | 38 | 2 | 9 |
| D18-88 L5W 1000N | 5 | 0.7 | 15 | 2 | 5 |
| D18-88 L5W 1050N | 5 | 0.6 | 14 | 3 | 11 |
| D18-88 L5W 1100N | 5 | 0.6 | 17 | 2 | 8 |
| D18-88 L5W 1150N | 10 | 0.7 | 15 | 1 | 9 |
| ----- | | | | | |
| D18-88 L5W 1200N | 5 | 0.8 | 20 | 1 | 6 |
| D18-88 L5W 1250N | 5 | 0.6 | 16 | 2 | 12 |
| D18-88 L6W 0000S | 5 | 0.7 | 22 | 2 | 8 |
| D18-88 L6W 0050S | 5 | 0.6 | 18 | 3 | 13 |
| D18-88 L6W 0100S | 10 | 0.8 | 26 | 1 | 9 |
| ----- | | | | | |
| D18-88 L6W 0150S | 5 | 0.8 | 32 | 1 | 12 |
| D18-88 L6W 0200S | 5 | 0.8 | 38 | 5 | 7 |
| D18-88 L6W 0250S | 5 | 0.6 | 32 | 2 | 13 |
| D18-88 L6W 0300S | 10 | 0.6 | 23 | 1 | 8 |
| D18-88 L6W 0350S | 5 | 0.8 | 35 | 1 | 14 |
| ----- | | | | | |
| D18-88 L6W 0400S | 5 | 0.5 | 27 | 1 | 13 |
| D18-88 L6W 0450S | 5 | 0.6 | 26 | 1 | 9 |
| D18-88 L6W 0500S | 5 | 0.9 | 59 | 1 | 10 |
| D18-88 L6W 0550S | 5 | 0.8 | 68 | 1 | 12 |
| D18-88 L6W 0600S | 5 | 0.6 | 54 | 1 | 11 |
| ----- | | | | | |
| D18-88 L6W 0650S | 5 | 1.0 | 66 | 4 | 6 |
| D18-88 L6W 0700S | 5 | 0.9 | 82 | 1 | 13 |
| D18-88 L6W 0750S | 5 | 0.6 | 65 | 3 | 10 |
| D18-88 L6W 0800S | 10 | 0.4 | 17 | 2 | 9 |
| D18-88 L6W 0850S | 5 | 0.6 | 29 | 3 | 8 |
| ----- | | | | | |
| D18-88 L6W 0900S | 5 | 0.7 | 21 | 2 | 11 |
| D18-88 L6W 0950S | 5 | 0.5 | 13 | 1 | 16 |
| D18-88 L6W 1000S | 5 | 0.6 | 11 | 1 | 13 |
| D18-88 L6W 1050S | 5 | 0.7 | 14 | 1 | 14 |
| D18-88 L6W 1100S | 5 | 0.6 | 12 | 2 | 7 |

Certified by

MIN-EN LABORATORIES LTD.



**MIN-EN
LABORATORIES LTD.**

SPECIALISTS IN MINERAL ENVIRONMENTS
CHEMISTS • ASSAYERS • ANALYSTS • GEOCHEMISTS

VANCOUVER OFFICE:
705 WEST 15TH STREET
NORTH VANCOUVER, B.C. CANADA V7M 1T2
TELEPHONE (604) 980-5814 OR (604) 988-4524
TELEX: VIA U.S.A. 7601067 • FAX (604) 980-9621

TIMMINS OFFICE:
33 EAST IROQUOIS ROAD
P.O. BOX 867
TIMMINS, ONTARIO CANADA P4N 7G7
TELEPHONE: (705) 264-9996

Certificate of Geochem

Company: TOBEX RESOURCES LTD.
Project:
Attention: E. LIVGARD

File: 8-1378/P15
Date: SEPT 20/88
Type: SOIL GEOCHEM

We hereby certify the following results for samples submitted.

| Sample Number | AU-WET PPB | AG PPM | CU PPM | SB PPM | AS PPM |
|------------------|------------|--------|--------|--------|--------|
| D18-88 L6W 1150S | 5 | 0.5 | 23 | 2 | 24 |
| D18-88 L6W 1200S | 5 | 0.6 | 18 | 2 | 8 |
| D18-88 L6W 1250S | 5 | 0.4 | 13 | 1 | 9 |
| D18-88 L6W 1300S | 5 | 0.7 | 24 | 1 | 11 |
| D18-88 L6W 0000N | 5 | 0.6 | 17 | 1 | 13 |
| ----- | | | | | |
| D18-88 L6W 0050N | 10 | 0.7 | 31 | 1 | 12 |
| D18-88 L6W 0100N | 5 | 0.5 | 17 | 1 | 9 |
| D18-88 L6W 0150N | 5 | 0.7 | 34 | 1 | 16 |
| D18-88 L6W 0200N | 5 | 0.7 | 25 | 1 | 8 |
| D18-88 L6W 0250N | 5 | 1.1 | 60 | 1 | 28 |
| ----- | | | | | |
| D18-88 L6W 0300N | 10 | 0.6 | 23 | 1 | 16 |
| D18-88 L6W 0350N | 5 | 0.7 | 25 | 1 | 14 |
| D18-88 L6W 0400N | 5 | 0.5 | 32 | 2 | 15 |
| D18-88 L6W 0450N | 10 | 0.6 | 31 | 1 | 21 |
| D18-88 L6W 0500N | 5 | 0.5 | 31 | 2 | 17 |
| ----- | | | | | |
| D18-88 L6W 0550N | 5 | 0.5 | 23 | 2 | 8 |
| D18-88 L6W 0600N | 5 | 0.8 | 17 | 1 | 7 |
| D18-88 L6W 0650N | 5 | 0.4 | 16 | 2 | 12 |
| D18-88 L6W 0700N | 5 | 0.5 | 40 | 1 | 13 |
| D18-88 L6W 0750N | 10 | 0.9 | 27 | 2 | 7 |
| ----- | | | | | |
| D18-88 L6W 0800N | 5 | 0.5 | 43 | 1 | 16 |
| D18-88 L6W 0850N | 5 | 0.6 | 19 | 2 | 6 |
| D18-88 L6W 0900N | 10 | 0.5 | 14 | 1 | 11 |
| D18-88 L6W 0950N | 5 | 0.4 | 34 | 2 | 10 |
| D18-88 L6W 1000N | 5 | 0.6 | 19 | 1 | 12 |
| ----- | | | | | |
| D18-88 L6W 1050N | 5 | 0.5 | 17 | 1 | 11 |
| D18-88 L6W 1100N | 10 | 0.6 | 16 | 1 | 10 |
| D18-88 L6W 1150N | 5 | 0.6 | 17 | 2 | 8 |
| D18-88 L6W 1200N | 5 | 0.4 | 14 | 1 | 6 |
| D18-88 L6W 1250N | 5 | 0.6 | 32 | 1 | 4 |

Certified by 

MIN-EN LABORATORIES LTD.



MIN-EN LABORATORIES LTD.

SPECIALISTS IN MINERAL ENVIRONMENTS
CHEMISTS • ASSAYERS • ANALYSTS • GEOCHEMISTS

150 WEST 12TH STREET
NORTH VANCOUVER, B.C. CANADA V7M 1T2
TELEPHONE (604) 980-5814 OR (604) 988-4524
TELEX: VIA U.S.A. 7601087 • FAX (604) 980-9621

TIMMINS OFFICE:
33 EAST IROQUOIS ROAD
P.O. BOX 867
TIMMINS, ONTARIO CANADA P4N 7G7
TELEPHONE: (705) 264-9996

Certificate of Geochem

Company: TOBEX RESOURCES LTD.
Project:
Attention: E. LIVGARD

File: 8-1378/P16
Date: SEPT 20/88
Type: SOIL GEOCHEM

We hereby certify the following results for samples submitted.

| Sample Number | AU-WET PPB | AG PPM | CU PPM | SB PPM | AS PPM |
|------------------|---------------|-----------|-----------|-----------|-----------|
| D18-88 L7W 0000S | 5 | 1.1 | 46 | 1 | 14 |
| D18-88 L7W 0050S | 20 | 0.7 | 19 | 3 | 8 |
| D18-88 L7W 0100S | 5 | 0.6 | 26 | 3 | 6 |
| D18-88 L7W 0150S | 10 | 0.6 | 17 | 2 | 5 |
| D18-88 L7W 0200S | 5 | 0.8 | 25 | 4 | 9 |
| ----- | | | | | |
| D18-88 L7W 0250S | 5 | 0.8 | 41 | 1 | 10 |
| D18-88 L7W 0300S | 5 | 1.2 | 83 | 1 | 18 |
| D18-88 L7W 0350S | 5 | 0.8 | 54 | 1 | 17 |
| D18-88 L7W 0400S | 5 | 0.9 | 47 | 2 | 14 |
| D18-88 L7W 0450S | 5 | 0.7 | 46 | 1 | 10 |
| ----- | | | | | |
| D18-88 L7W 0500S | 10 | 0.7 | 39 | 2 | 9 |
| D18-88 L7W 0550S | 10 | 0.9 | 136 | 1 | 15 |
| D18-88 L7W 0600S | 5 | 0.8 | 62 | 4 | 7 |
| D18-88 L7W 0650S | 5 | 0.6 | 30 | 1 | 12 |
| D18-88 L7W 0700S | 20 | 0.5 | 17 | 1 | 9 |
| ----- | | | | | |
| D18-88 L7W 0750S | 5 | 0.6 | 21 | 1 | 10 |
| D18-88 L7W 0800S | 5 | 0.6 | 22 | 2 | 15 |
| D18-88 L7W 0850S | 5 | 0.7 | 23 | 1 | 9 |
| D18-88 L7W 0900S | 5 | 0.6 | 15 | 1 | 19 |
| D18-88 L7W 0950S | 10 | 0.8 | 18 | 2 | 14 |
| ----- | | | | | |
| D18-88 L7W 1000S | 10 | 0.9 | 19 | 1 | 13 |
| D18-88 L7W 1050S | NO SAMPLE | | | | |
| D18-88 L7W 1100S | 5 | 0.7 | 15 | 3 | 7 |
| D18-88 L7W 1150S | 5 | 0.6 | 21 | 2 | 12 |
| D18-88 L7W 1200S | 10 | 0.8 | 23 | 2 | 11 |
| ----- | | | | | |
| D18-88 L7W 1250S | 5 | 1.0 | 50 | 1 | 8 |
| D18-88 L7W 0050N | 5 | 0.9 | 22 | 5 | 22 |
| D18-88 L7W 0100N | 5 | 0.9 | 37 | 2 | 20 |
| D18-88 L7W 0150N | 5 | 0.8 | 23 | 2 | 6 |
| D18-88 L7W 0200N | 5 | 0.7 | 14 | 2 | 9 |

Certified by

MIN-EN LABORATORIES LTD.



MIN-EN LABORATORIES LTD.

SPECIALISTS IN MINERAL ENVIRONMENTS
CHEMISTS • ASSAYERS • ANALYSTS • GEOCHEMISTS

705 WEST 107TH STREET
NORTH VANCOUVER, B.C. CANADA V7M 1T2
TELEPHONE (604) 980-5814 OR (604) 988-4524
TELEX: VIA U.S.A. 7601067 • FAX (604) 980-9821

TIMMINS OFFICE:
33 EAST IROQUOIS ROAD
P.O. BOX 867
TIMMINS, ONTARIO CANADA P4N 7G7
TELEPHONE: (705) 264-9996

Certificate of Geochem

Company: TOBEX RESOURCE LTD.
Project:
Attention: E. LIVGARD

File: 8-1378/P17
Date: SEPT 16/88
Type: SOIL GEOCHEM

We hereby certify the following results for samples submitted.

| Sample Number | AU-WET PFB | AG PPM | CU PPM | SB PPM | AS PPM |
|------------------|------------|--------|--------|--------|--------|
| D18-88 L7W 0250N | 5 | .7 | 41 | 3 | 17 |
| D18-88 L7W 0300N | 5 | .5 | 26 | 3 | 19 |
| D18-88 L7W 0350N | 10 | .7 | 22 | 2 | 8 |
| D18-88 L7W 0400N | 10 | .4 | 14 | 2 | 6 |
| D18-88 L7W 0450N | 5 | .5 | 15 | 1 | 24 |
| ----- | | | | | |
| D18-88 L7W 0500N | 5 | .4 | 33 | 2 | 15 |
| D18-88 L7W 0550N | 5 | .4 | 27 | 1 | 21 |
| D18-88 L7W 0600N | 10 | .5 | 18 | 2 | 10 |
| D18-88 L7W 0650N | 5 | .3 | 21 | 3 | 19 |
| D18-88 L7W 0700N | 5 | .4 | 15 | 2 | 22 |
| ----- | | | | | |
| D18-88 L7W 0750N | 5 | .6 | 22 | 2 | 6 |
| D18-88 L7W 0800N | 5 | .4 | 14 | 1 | 12 |
| D18-88 L7W 0850N | 5 | .4 | 9 | 1 | 5 |
| D18-88 L7W 0900N | 5 | .6 | 15 | 2 | 9 |
| D18-88 L7W 0950N | 10 | .3 | 11 | 1 | 13 |
| ----- | | | | | |
| D18-88 L7W 1000N | 5 | .4 | 26 | 1 | 7 |
| D18-88 L7W 1050N | 5 | .3 | 26 | 1 | 15 |
| D18-88 L7W 1100N | 10 | .3 | 12 | 2 | 8 |
| D18-88 L7W 1150N | 5 | .3 | 14 | 1 | 5 |
| D18-88 L7W 1200N | 5 | .4 | 15 | 2 | 11 |
| ----- | | | | | |
| D18-88 L7W 1250N | 5 | .6 | 14 | 3 | 4 |

Certified by 
MIN-EN LABORATORIES LTD.

STATISTICS



LIVGARD CONSULTANTS LTD.

717 - 837 West Hastings, Vancouver, B.C. V6C 1B6 Ph. 669-2426

 Analysis for CU

| | Original Observations | Loga- rithms |
|---|--------------------------|-----------------|
| ----- | | |
| Mean | 24.11 | 3.06 |
| Variance | 205.05 | 0.24 |
| Standard deviation | 14.32 | 0.49 |
| Geometric mean | 21.22 | |
| Multiplying factor for the geometric mean | 1.27 | |
| Estimate of the mean from logarithms | 23.88 | |
| Estimate of the variance from logarithms | 151.97 | |
| Coefficient of variation, C(1) | 0.52 | |
| | C(2) | 0.59 |
| | C(3) | 0.52 |
| Number of observations | 500 | |

Points for the Confidence Region

| No. | Original observations | | Logarithms | |
|-----|-----------------------|-----------------------|------------|-----------------------|
| | Mean | Standard Deviation | Mean | Standard Deviation |
| 1 | 23.22 | 12.47 | 3.02 | 0.50 |
| 2 | 23.17 | 12.31 | 3.02 | 0.50 |
| 3 | 23.12 | 12.14 | 3.02 | 0.49 |
| 4 | 23.07 | 11.98 | 3.02 | 0.49 |
| 5 | 23.02 | 11.81 | 3.02 | 0.48 |
| 6 | 22.97 | 11.65 | 3.02 | 0.48 |
| 7 | 22.93 | 11.48 | 3.02 | 0.47 |
| 8 | 22.88 | 11.32 | 3.02 | 0.47 |
| 9 | 22.83 | 11.15 | 3.02 | 0.46 |
| 10 | 23.27 | 12.64 | 3.02 | 0.51 |
| 11 | 23.32 | 12.80 | 3.02 | 0.51 |
| 12 | 46.79 | 25.14 | 3.09 | 0.50 |
| 13 | 46.54 | 24.73 | 3.09 | 0.50 |
| 14 | 46.30 | 24.32 | 3.09 | 0.49 |
| 15 | 46.05 | 23.91 | 3.09 | 0.49 |
| 16 | 45.81 | 23.50 | 3.09 | 0.48 |
| 17 | 45.56 | 23.10 | 3.09 | 0.48 |
| 18 | 45.32 | 22.70 | 3.09 | 0.47 |
| 19 | 45.08 | 22.30 | 3.09 | 0.47 |
| 20 | 44.84 | 21.90 | 3.09 | 0.46 |
| 21 | 23.67 | 13.00 | 3.03 | 0.51 |
| 22 | 24.03 | 13.19 | 3.05 | 0.51 |
| 23 | 24.40 | 13.39 | 3.06 | 0.51 |
| 24 | 24.77 | 13.60 | 3.08 | 0.51 |
| 25 | 23.14 | 11.30 | 3.03 | 0.46 |
| 26 | 23.46 | 11.46 | 3.05 | 0.46 |
| 27 | 23.78 | 11.61 | 3.06 | 0.46 |
| 28 | 24.11 | 11.77 | 3.08 | 0.46 |
| 29 | 47.04 | 25.55 | 3.09 | 0.51 |
| 30 | 47.29 | 25.97 | 3.09 | 0.51 |

GEOCHEMICAL DATA
 FOR LIVGARD
 TOBEX RESOURCES LTD.

++++VARIABLE: CU

Total observations = 500 Number above detection limit = 500

T(5)% = 1.96

| Mean | Variance | Standard Deviation | Coefficient of Variation |
|------|----------|--------------------|--------------------------|
| 24 | 205 | 14 | 1 |

| Confidence Limits | Lower | Upper |
|-------------------|-------|-------|
| Mean | 23 | 25 |
| Variance | 182 | 233 |

Minimum value: 3
 Maximum value: 136

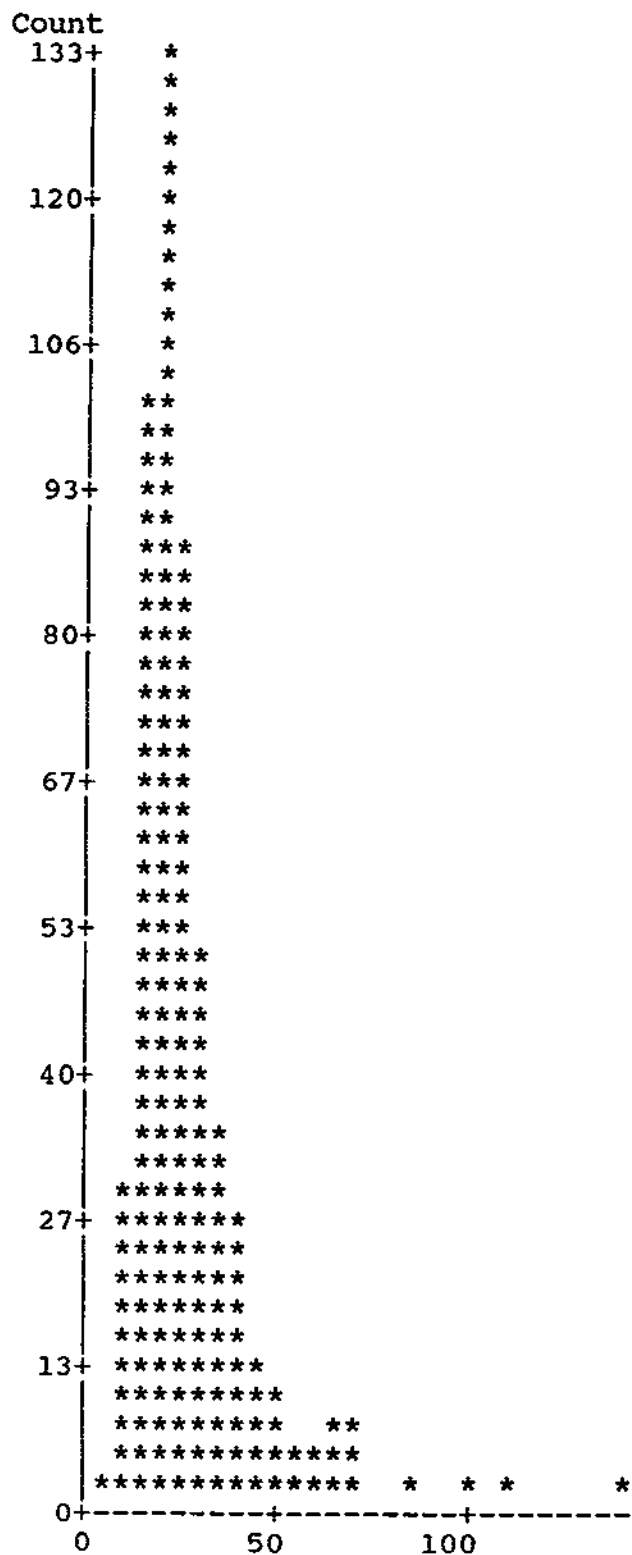
FREQUENCY DISTRIBUTION

500 values from 500 observations
 Class interval = 5

| Number | Class Interval | Frequency | Relative Freq. (%) | Cumulative Frequency | Relative Cum. Freq. (%) |
|--------|-----------------|-----------|--------------------|----------------------|-------------------------|
| 28 | 135.00 - 140.00 | 1 | 0.20 | 1 | 0.20 |
| 27 | 130.00 - 135.00 | 0 | 0.00 | 1 | 0.20 |
| 26 | 125.00 - 130.00 | 0 | 0.00 | 1 | 0.20 |
| 25 | 120.00 - 125.00 | 0 | 0.00 | 1 | 0.20 |
| 24 | 115.00 - 120.00 | 0 | 0.00 | 1 | 0.20 |
| 23 | 110.00 - 115.00 | 1 | 0.20 | 2 | 0.40 |
| 22 | 105.00 - 110.00 | 0 | 0.00 | 2 | 0.40 |
| 21 | 100.00 - 105.00 | 1 | 0.20 | 3 | 0.60 |
| 20 | 95.00 - 100.00 | 0 | 0.00 | 3 | 0.60 |
| 19 | 90.00 - 95.00 | 0 | 0.00 | 3 | 0.60 |
| 18 | 85.00 - 90.00 | 1 | 0.20 | 4 | 0.80 |
| 17 | 80.00 - 85.00 | 1 | 0.20 | 5 | 1.00 |
| 16 | 75.00 - 80.00 | 0 | 0.00 | 5 | 1.00 |
| 15 | 70.00 - 75.00 | 4 | 0.80 | 9 | 1.80 |
| 14 | 65.00 - 70.00 | 5 | 1.00 | 14 | 2.80 |
| 13 | 60.00 - 65.00 | 6 | 1.20 | 20 | 4.00 |
| 12 | 55.00 - 60.00 | 3 | 0.60 | 23 | 4.60 |
| 11 | 50.00 - 55.00 | 6 | 1.20 | 29 | 5.80 |
| 10 | 45.00 - 50.00 | 13 | 2.60 | 42 | 8.40 |
| 9 | 40.00 - 45.00 | 23 | 4.60 | 65 | 13.00 |
| 8 | 35.00 - 40.00 | 25 | 5.00 | 90 | 18.00 |
| 7 | 30.00 - 35.00 | 41 | 8.20 | 131 | 26.20 |
| 6 | 25.00 - 30.00 | 65 | 13.00 | 196 | 39.20 |
| 5 | 20.00 - 25.00 | 126 | 25.20 | 322 | 64.40 |
| 4 | 15.00 - 20.00 | 121 | 24.20 | 443 | 88.60 |
| 3 | 10.00 - 15.00 | 53 | 10.60 | 496 | 99.20 |
| 2 | 5.00 - 10.00 | 4 | 0.80 | 500 | 100.00 |
| 1 | 0.00 - 5.00 | 0 | 0.00 | 500 | 100.00 |

500 observations within the range from 500 total.

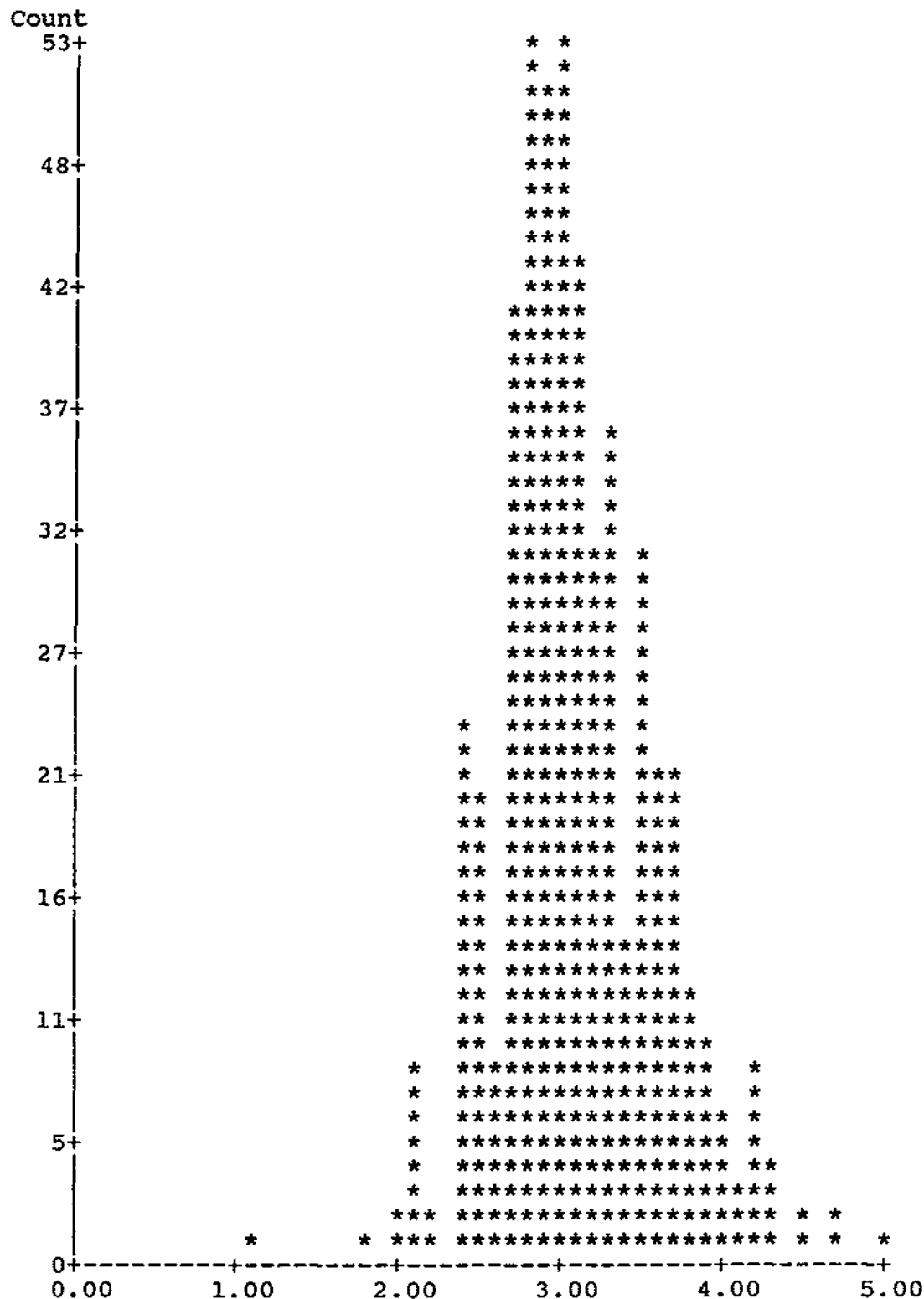
Histogram for CU (Original observations)



COPPER DATA LIVGARD PROJECT

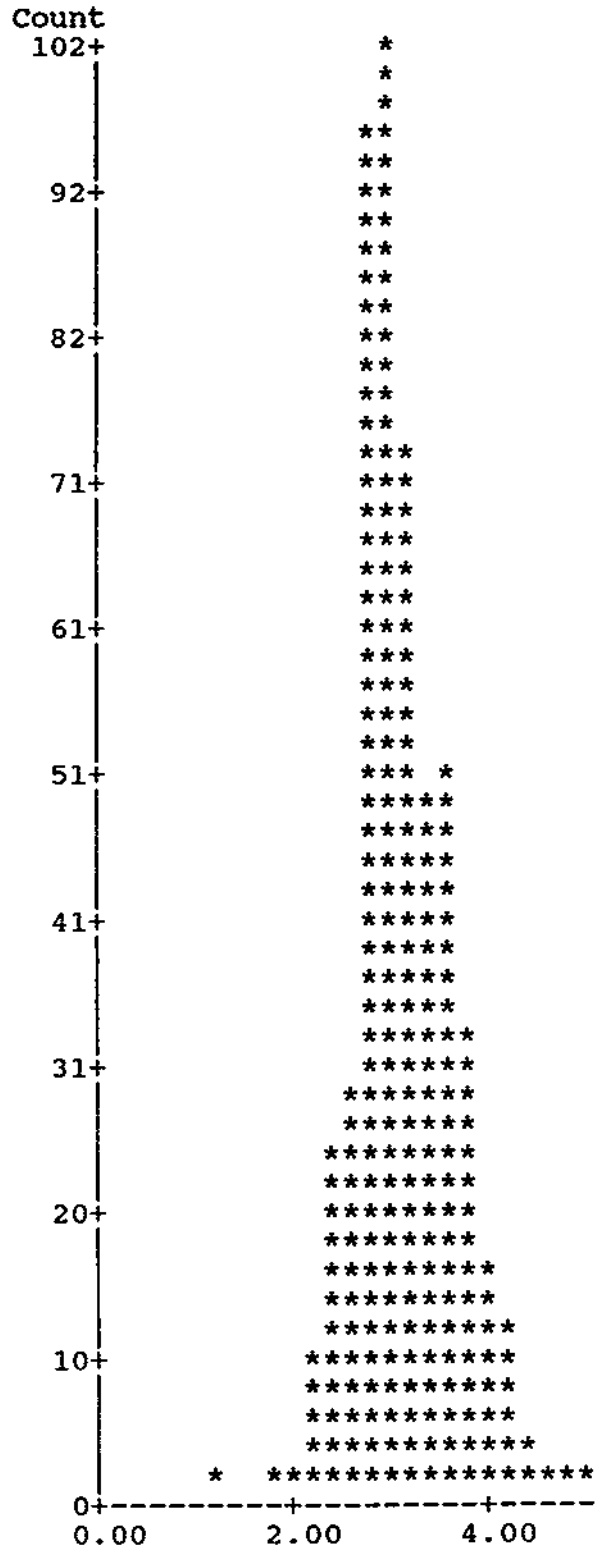
500 observations within the range from 500 total.

Histogram for CU (Natural logarithms)



500 observations within the range from 500 total.

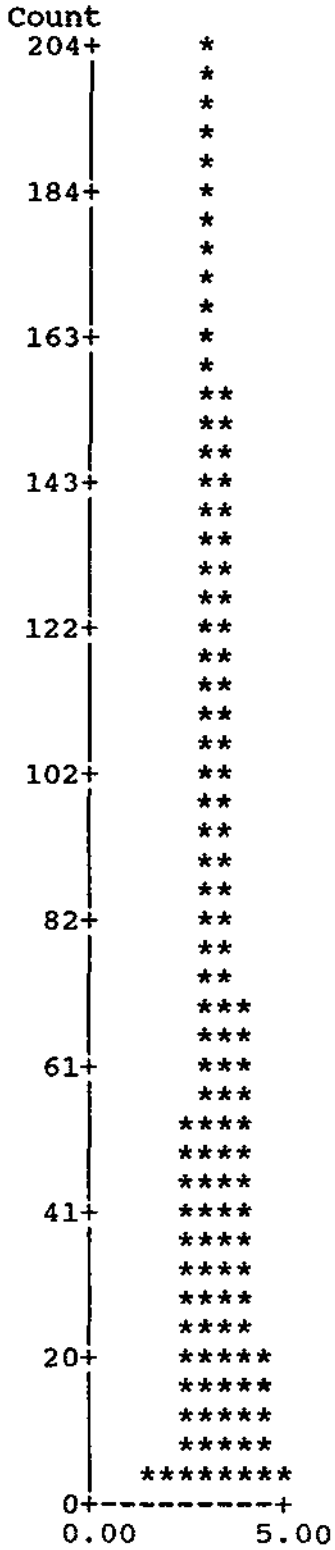
Histogram for CU (Natural logarithms)



COPPER DATA LIVGARD PROJECT

500 observations within the range from 500 total.

Histogram for CU (Natural logarithms)



Observations rithms

| | | |
|---|------|------|
| Mean | 0.62 | 0.46 |
| Variance | 0.45 | 0.03 |
| Standard deviation | 0.67 | 0.16 |
| Geometric mean | 1.59 | |
| Multiplying factor for the geometric mean | 1.03 | |
| Estimate of the mean from logarithms | 0.61 | |
| Estimate of the variance from logarithms | 0.07 | |
| Coefficient of variation, C(1) | 0.16 | |
| C(2) | 1.08 | |
| C(3) | 0.43 | |
| Number of observations | 500 | |

Points for the Confidence Region

| No. | Original observations | | Logarithms | |
|-----|-----------------------|--------------------|------------|--------------------|
| | Mean | Standard Deviation | Mean | Standard Deviation |
| 1 | 0.59 | 0.10 | 0.45 | 0.17 |
| 2 | 0.59 | 0.10 | 0.45 | 0.16 |
| 3 | 0.59 | 0.10 | 0.45 | 0.16 |
| 4 | 0.59 | 0.10 | 0.45 | 0.16 |
| 5 | 0.59 | 0.09 | 0.45 | 0.16 |
| 6 | 0.59 | 0.09 | 0.45 | 0.16 |
| 7 | 0.59 | 0.09 | 0.45 | 0.16 |
| 8 | 0.59 | 0.09 | 0.45 | 0.15 |
| 9 | 0.59 | 0.09 | 0.45 | 0.15 |
| 10 | 0.59 | 0.10 | 0.45 | 0.17 |
| 11 | 0.59 | 0.10 | 0.45 | 0.17 |
| 12 | 1.73 | 0.29 | 0.48 | 0.17 |
| 13 | 1.72 | 0.28 | 0.48 | 0.16 |
| 14 | 1.72 | 0.28 | 0.48 | 0.16 |
| 15 | 1.72 | 0.28 | 0.48 | 0.16 |
| 16 | 1.72 | 0.28 | 0.48 | 0.16 |
| 17 | 1.72 | 0.27 | 0.47 | 0.16 |
| 18 | 1.72 | 0.27 | 0.47 | 0.16 |
| 19 | 1.71 | 0.27 | 0.47 | 0.15 |
| 20 | 1.71 | 0.26 | 0.47 | 0.15 |
| 21 | 0.60 | 0.10 | 0.46 | 0.17 |
| 22 | 0.61 | 0.10 | 0.46 | 0.17 |
| 23 | 0.62 | 0.10 | 0.47 | 0.17 |
| 24 | 0.62 | 0.11 | 0.47 | 0.17 |
| 25 | 0.60 | 0.09 | 0.46 | 0.15 |
| 26 | 0.60 | 0.09 | 0.46 | 0.15 |
| 27 | 0.61 | 0.09 | 0.47 | 0.15 |
| 28 | 0.62 | 0.09 | 0.47 | 0.15 |
| 29 | 1.73 | 0.29 | 0.48 | 0.17 |
| 30 | 1.73 | 0.29 | 0.48 | 0.17 |

ANALYSIS FOR AG

There are 500 samples. Searched the entire range

The data were transformed by LN(X-ALPHA) with ALPHA= .1183321
 Skewness before transformation= 19.49841 After= 2.782404E-02

The largest adjusted gap is between the values of

GEOCHEMICAL DATA
 FOR LIVGARD
 TOBEX RESOURCES LTD.

++++VARIABLE: AG

Total observations = 500 Number above detection limit = 500

T(5)% = 1.96

| Mean | Variance | Standard Deviation | Coefficient of Variation |
|------|----------|--------------------|--------------------------|
| 0.6 | 0.5 | 0.7 | 1.1 |

| Confidence Limits | Lower | Upper |
|-------------------|-------|-------|
| Mean | 0.6 | 0.7 |
| Variance | 0.4 | 0.5 |

Minimum value: 0.2
 Maximum value: 15.0

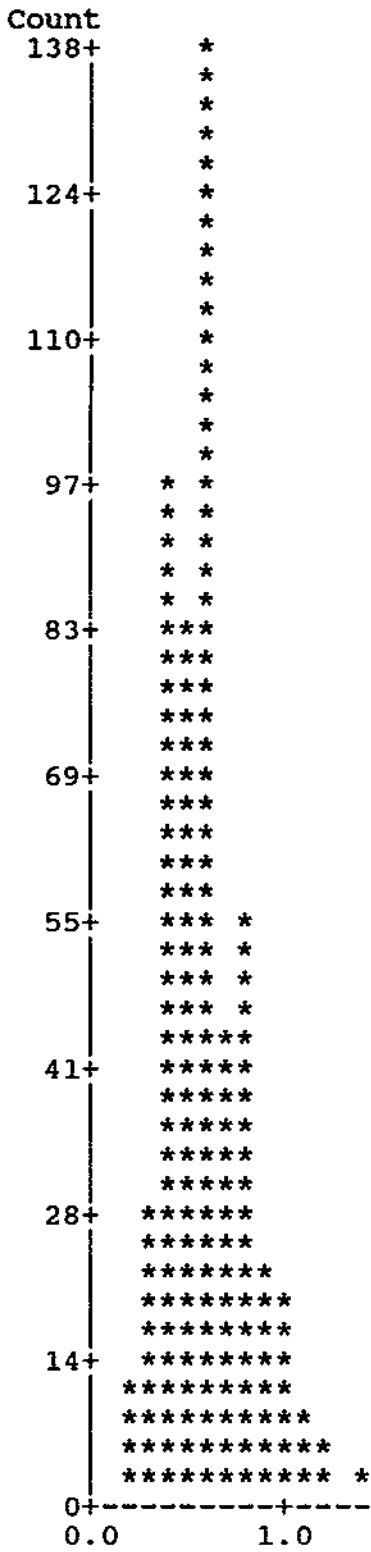
FREQUENCY DISTRIBUTION

499 values from 500 observations
 Class interval = .1

| Number | Class Interval | Frequency | Relative Freq. (%) | Cumulative Frequency | Relative Cum. Freq. (%) |
|--------|----------------|-----------|--------------------|----------------------|-------------------------|
| 1 | 0.00 - | 0 | 0.00 | 0 | 0.00 |
| 2 | 0.10 - | 0 | 0.00 | 0 | 0.00 |
| 3 | 0.20 - | 9 | 1.80 | 9 | 1.80 |
| 4 | 0.30 - | 26 | 5.21 | 35 | 7.01 |
| 5 | 0.40 - | 96 | 19.24 | 131 | 26.25 |
| 6 | 0.50 - | 81 | 16.23 | 212 | 42.48 |
| 7 | 0.60 - | 138 | 27.66 | 350 | 70.14 |
| 8 | 0.70 - | 44 | 8.82 | 394 | 78.96 |
| 9 | 0.80 - | 53 | 10.62 | 447 | 89.58 |
| 10 | 0.90 - | 22 | 4.41 | 469 | 93.99 |
| 11 | 1.00 - | 17 | 3.41 | 486 | 97.39 |
| 12 | 1.10 - | 7 | 1.40 | 493 | 98.80 |
| 13 | 1.20 - | 5 | 1.00 | 498 | 99.80 |
| 14 | 1.30 - | 0 | 0.00 | 498 | 99.80 |
| 15 | 1.40 - | 1 | 0.20 | 499 | 100.00 |

499 observations within the range from 500 total.

Histogram for AG (Original observations)



Analysis for AS

| | Original Observations | Loga- rithms |
|---|--------------------------|-----------------|
| ----- | | |
| Mean | 12.58 | 2.44 |
| Variance | 33.13 | 0.19 |
| Standard deviation | 5.76 | 0.44 |
| Geometric mean | 11.45 | |
| Multiplying factor for the geometric mean | 1.21 | |
| Estimate of the mean from logarithms | 12.59 | |
| Estimate of the variance from logarithms | 33.07 | |
| Coefficient of variation, C(1) | 0.46 | |
| C(2) | 0.46 | |
| C(3) | 0.46 | |
| Number of observations | 500 | |

Points for the Confidence Region

| No. | Original observations | | Logarithms | |
|-------|-----------------------|-----------------------|------------|-----------------------|
| | Mean | Standard Deviation | Mean | Standard Deviation |
| ----- | | | | |
| 1 | 12.27 | 5.82 | 2.41 | 0.45 |
| 2 | 12.25 | 5.75 | 2.41 | 0.45 |
| 3 | 12.23 | 5.68 | 2.41 | 0.44 |
| 4 | 12.21 | 5.60 | 2.41 | 0.44 |
| 5 | 12.19 | 5.53 | 2.41 | 0.43 |
| 6 | 12.17 | 5.46 | 2.41 | 0.43 |
| 7 | 12.15 | 5.38 | 2.41 | 0.42 |
| 8 | 12.13 | 5.31 | 2.41 | 0.42 |
| 9 | 12.11 | 5.24 | 2.41 | 0.41 |
| 10 | 12.29 | 5.90 | 2.40 | 0.46 |
| 11 | 12.31 | 5.97 | 2.40 | 0.46 |
| 12 | 23.92 | 11.36 | 2.47 | 0.45 |
| 13 | 23.82 | 11.19 | 2.47 | 0.45 |
| 14 | 23.72 | 11.02 | 2.47 | 0.44 |
| 15 | 23.62 | 10.84 | 2.47 | 0.44 |
| 16 | 23.51 | 10.67 | 2.47 | 0.43 |
| 17 | 23.41 | 10.50 | 2.47 | 0.43 |
| 18 | 23.31 | 10.33 | 2.47 | 0.42 |
| 19 | 23.21 | 10.17 | 2.47 | 0.42 |
| 20 | 23.11 | 10.00 | 2.47 | 0.41 |
| 21 | 12.47 | 6.05 | 2.42 | 0.46 |
| 22 | 12.64 | 6.13 | 2.43 | 0.46 |
| 23 | 12.82 | 6.22 | 2.45 | 0.46 |
| 24 | 12.99 | 6.30 | 2.46 | 0.46 |
| 25 | 12.25 | 5.30 | 2.42 | 0.41 |
| 26 | 12.40 | 5.36 | 2.43 | 0.41 |
| 27 | 12.56 | 5.43 | 2.44 | 0.41 |
| 28 | 12.71 | 5.50 | 2.46 | 0.41 |
| 29 | 24.03 | 11.53 | 2.47 | 0.46 |
| 30 | 24.13 | 11.70 | 2.47 | 0.46 |

GEOCHEMICAL DATA
 FOR LIVGARD
 TOBEX RESOURCES LTD.

++++VARIABLE: AS

Total observations = 500 Number above detection limit = 500

T(5)% = 1.96

| Mean | Variance | Standard Deviation | Coefficient of Variation |
|------|----------|--------------------|--------------------------|
| 13 | 33 | 6 | 0 |

| Confidence Limits | Lower | Upper |
|-------------------|-------|-------|
| Mean | 12 | 13 |
| Variance | 29 | 38 |

Minimum value: 2
 Maximum value: 48

FREQUENCY DISTRIBUTION

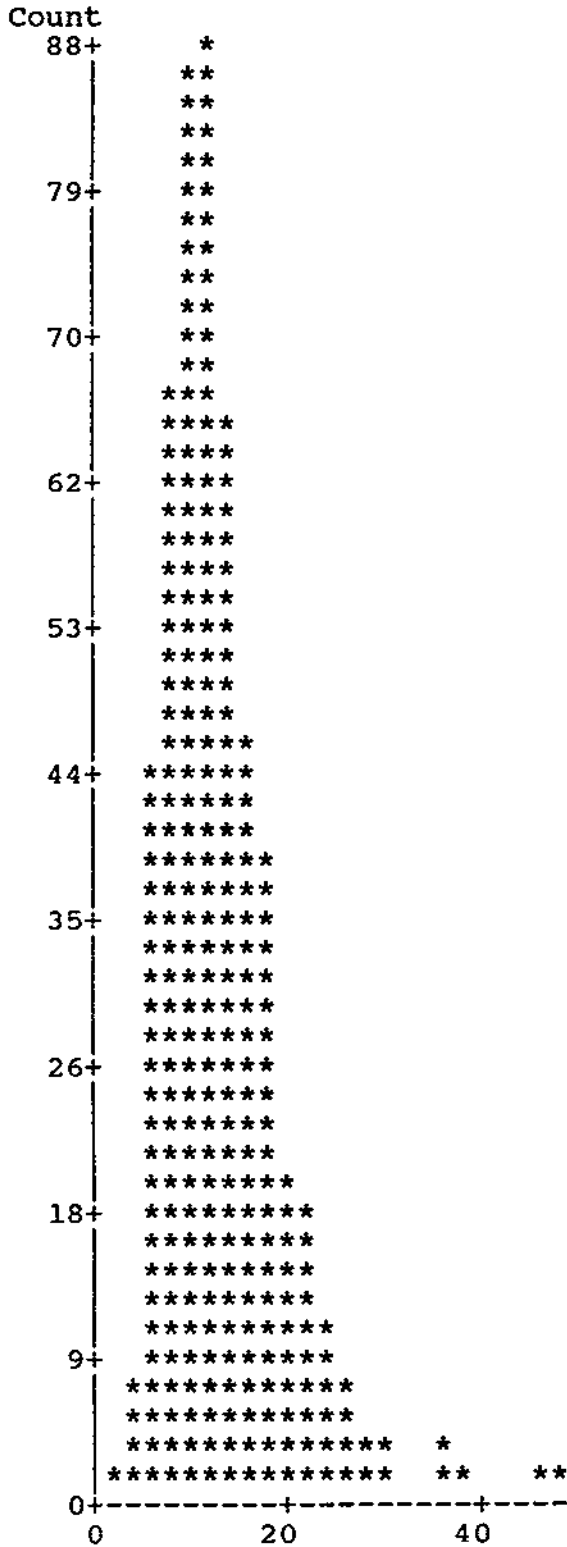
500 values from 500 observations
 Class interval = 2

| Number | Class Interval | Frequency | Relative Freq. (%) | Cumulative Frequency | Relative Cum. Freq. (%) |
|--------|----------------|-----------|--------------------|----------------------|-------------------------|
| 1 | 0.00 ~ 2.00 | 0 | 0.00 | 0 | 0.00 |
| 2 | 2.00 ~ 4.00 | 1 | 0.20 | 1 | 0.20 |
| 3 | 4.00 ~ 6.00 | 7 | 1.40 | 8 | 1.60 |
| 4 | 6.00 ~ 8.00 | 43 | 8.60 | 51 | 10.20 |
| 5 | 8.00 ~ 10.00 | 66 | 13.20 | 117 | 23.40 |
| 6 | 10.00 ~ 12.00 | 86 | 17.20 | 203 | 40.60 |
| 7 | 12.00 ~ 14.00 | 88 | 17.60 | 291 | 58.20 |
| 8 | 14.00 ~ 16.00 | 65 | 13.00 | 356 | 71.20 |
| 9 | 16.00 ~ 18.00 | 45 | 9.00 | 401 | 80.20 |
| 10 | 18.00 ~ 20.00 | 37 | 7.40 | 438 | 87.60 |
| 11 | 20.00 ~ 22.00 | 18 | 3.60 | 456 | 91.20 |
| 12 | 22.00 ~ 24.00 | 17 | 3.40 | 473 | 94.60 |
| 13 | 24.00 ~ 26.00 | 10 | 2.00 | 483 | 96.60 |
| 14 | 26.00 ~ 28.00 | 7 | 1.40 | 490 | 98.00 |
| 15 | 28.00 ~ 30.00 | 3 | 0.60 | 493 | 98.60 |
| 16 | 30.00 ~ 32.00 | 2 | 0.40 | 495 | 99.00 |
| 17 | 32.00 ~ 34.00 | 0 | 0.00 | 495 | 99.00 |
| 18 | 34.00 ~ 36.00 | 0 | 0.00 | 495 | 99.00 |
| 19 | 36.00 ~ 38.00 | 2 | 0.40 | 497 | 99.40 |
| 20 | 38.00 ~ 40.00 | 1 | 0.20 | 498 | 99.60 |
| 21 | 40.00 ~ 42.00 | 0 | 0.00 | 498 | 99.60 |
| 22 | 42.00 ~ 44.00 | 0 | 0.00 | 498 | 99.60 |
| 23 | 44.00 ~ 46.00 | 0 | 0.00 | 498 | 99.60 |
| 24 | 46.00 ~ 48.00 | 1 | 0.20 | 499 | 99.80 |
| 25 | 48.00 ~ 50.00 | 1 | 0.20 | 500 | 100.00 |

ARSENIC DATA LIVGARD PROJECT

500 observations within the range from 500 total.

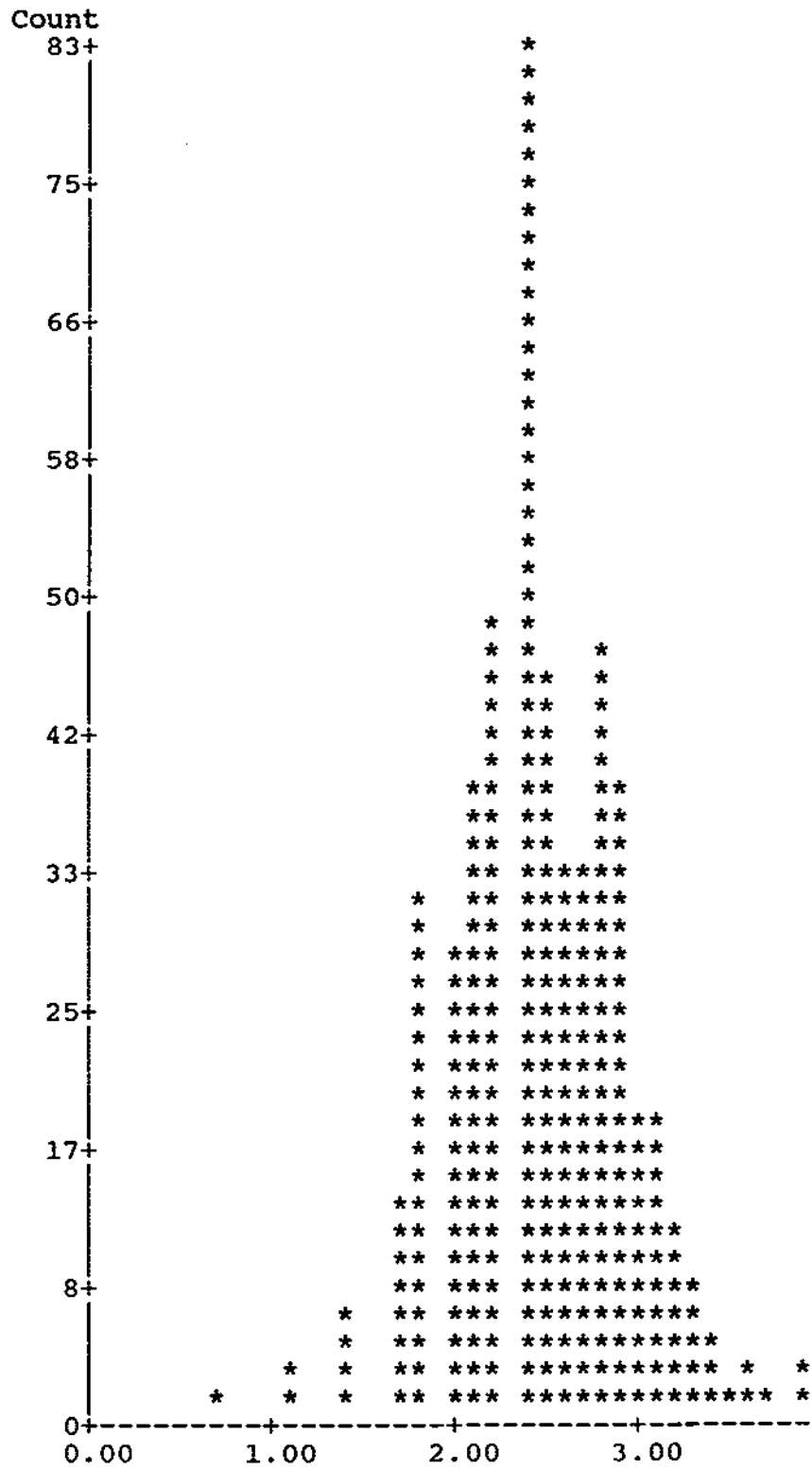
Histogram for AS (Original observations)



INTERVAL = .1

500 observations within the range from 500 total.

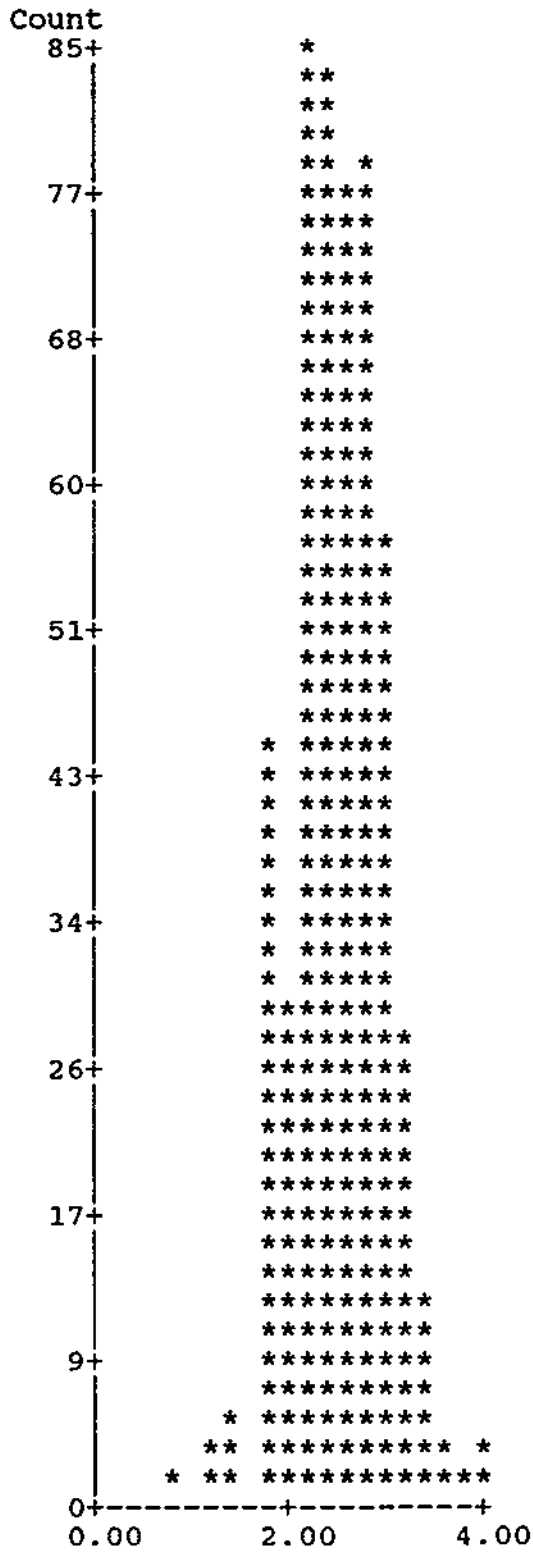
Histogram for AS (Natural logarithms)



ARSENIC DATA LIVGARD PROJECT

500 observations within the range from 500 total.

Histogram for AS (Natural logarithms)



 Analysis for AU

| | Original Observations | Loga- rithms |
|---|--------------------------|-----------------|
| | ----- | ----- |
| Mean | 5.86 | 1.72 |
| Variance | 5.27 | 0.08 |
| Standard deviation | 2.30 | 0.28 |
| Geometric mean | 5.59 | |
| Multiplying factor for the geometric mean | 1.08 | |
| Estimate of the mean from logarithms | 5.80 | |
| Estimate of the variance from logarithms | 2.66 | |
| Coefficient of variation, C(1) | 0.28 | |
| C(2) | 0.39 | |
| C(3) | 0.28 | |
| Number of observations | 500 | |

Points for the Confidence Region

| No. | Original observations | | Logarithms | |
|-----|-----------------------|-----------------------|------------|-----------------------|
| | Mean | Standard Deviation | Mean | Standard Deviation |
| 1 | 5.70 | 1.66 | 1.70 | 0.29 |
| 2 | 5.70 | 1.64 | 1.70 | 0.28 |
| 3 | 5.69 | 1.63 | 1.70 | 0.28 |
| 4 | 5.69 | 1.61 | 1.70 | 0.28 |
| 5 | 5.69 | 1.59 | 1.70 | 0.27 |
| 6 | 5.68 | 1.57 | 1.70 | 0.27 |
| 7 | 5.68 | 1.55 | 1.70 | 0.27 |
| 8 | 5.68 | 1.53 | 1.70 | 0.27 |
| 9 | 5.67 | 1.51 | 1.70 | 0.26 |
| 10 | 5.70 | 1.68 | 1.70 | 0.29 |
| 11 | 5.71 | 1.70 | 1.70 | 0.29 |
| 12 | 10.21 | 2.98 | 1.74 | 0.29 |
| 13 | 10.19 | 2.94 | 1.74 | 0.28 |
| 14 | 10.17 | 2.90 | 1.74 | 0.28 |
| 15 | 10.15 | 2.87 | 1.74 | 0.28 |
| 16 | 10.14 | 2.83 | 1.74 | 0.27 |
| 17 | 10.12 | 2.80 | 1.74 | 0.27 |
| 18 | 10.10 | 2.76 | 1.74 | 0.27 |
| 19 | 10.08 | 2.72 | 1.74 | 0.27 |
| 20 | 10.06 | 2.69 | 1.74 | 0.26 |
| 21 | 5.76 | 1.71 | 1.71 | 0.29 |
| 22 | 5.81 | 1.73 | 1.72 | 0.29 |
| 23 | 5.86 | 1.74 | 1.72 | 0.29 |
| 24 | 5.91 | 1.76 | 1.73 | 0.29 |
| 25 | 5.72 | 1.53 | 1.71 | 0.26 |
| 26 | 5.76 | 1.54 | 1.72 | 0.26 |
| 27 | 5.81 | 1.55 | 1.72 | 0.26 |
| 28 | 5.85 | 1.56 | 1.73 | 0.26 |
| 29 | 10.23 | 3.01 | 1.74 | 0.29 |
| 30 | 10.25 | 3.05 | 1.74 | 0.29 |

GEOCHEMICAL DATA

FOR LIVGARD

TOBEX RESOURCES LTD.

++++VARIABLE: AU

Total observations = 500 Number above detection limit = 500

T(5)% = 1.96

| Mean | Variance | Standard Deviation | Coefficient of Variation |
|------|----------|--------------------|--------------------------|
| 6 | 5 | 2 | 0 |

| Confidence Limits | Lower | Upper |
|-------------------|-------|-------|
| Mean | 6 | 6 |
| Variance | 5 | 6 |

Minimum value: 5
Maximum value: 25

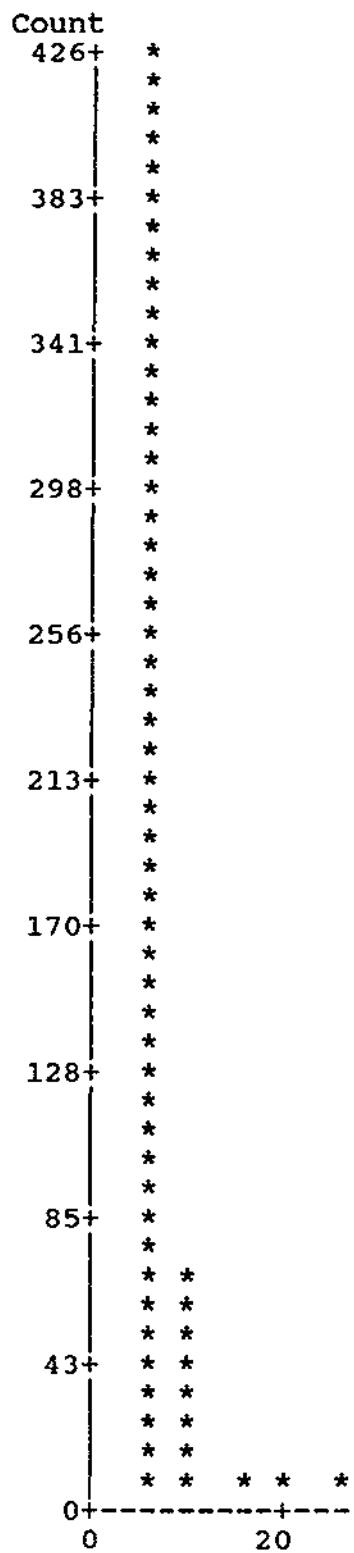
FREQUENCY DISTRIBUTION

500 values from 500 observations
Class interval = 2

| Number | Class Interval | Frequency | Relative Freq. (%) | Cumulative Frequency | Relative Cum. Freq. (%) |
|--------|----------------|-----------|--------------------|----------------------|-------------------------|
| 1 | 0.00 - 2.00 | 0 | 0.00 | 0 | 0.00 |
| 2 | 2.00 - 4.00 | 0 | 0.00 | 0 | 0.00 |
| 3 | 4.00 - 6.00 | 0 | 0.00 | 0 | 0.00 |
| 4 | 6.00 - 8.00 | 426 | 85.20 | 426 | 85.20 |
| 5 | 8.00 - 10.00 | 0 | 0.00 | 426 | 85.20 |
| 6 | 10.00 - 12.00 | 66 | 13.20 | 492 | 98.40 |
| 7 | 12.00 - 14.00 | 0 | 0.00 | 492 | 98.40 |
| 8 | 14.00 - 16.00 | 0 | 0.00 | 492 | 98.40 |
| 9 | 16.00 - 18.00 | 5 | 1.00 | 497 | 99.40 |
| 10 | 18.00 - 20.00 | 0 | 0.00 | 497 | 99.40 |
| 11 | 20.00 - 22.00 | 2 | 0.40 | 499 | 99.80 |
| 12 | 22.00 - 24.00 | 0 | 0.00 | 499 | 99.80 |
| 13 | 24.00 - 26.00 | 0 | 0.00 | 499 | 99.80 |
| 14 | 26.00 - 28.00 | 1 | 0.20 | 500 | 100.00 |

500 observations within the range from 500 total.

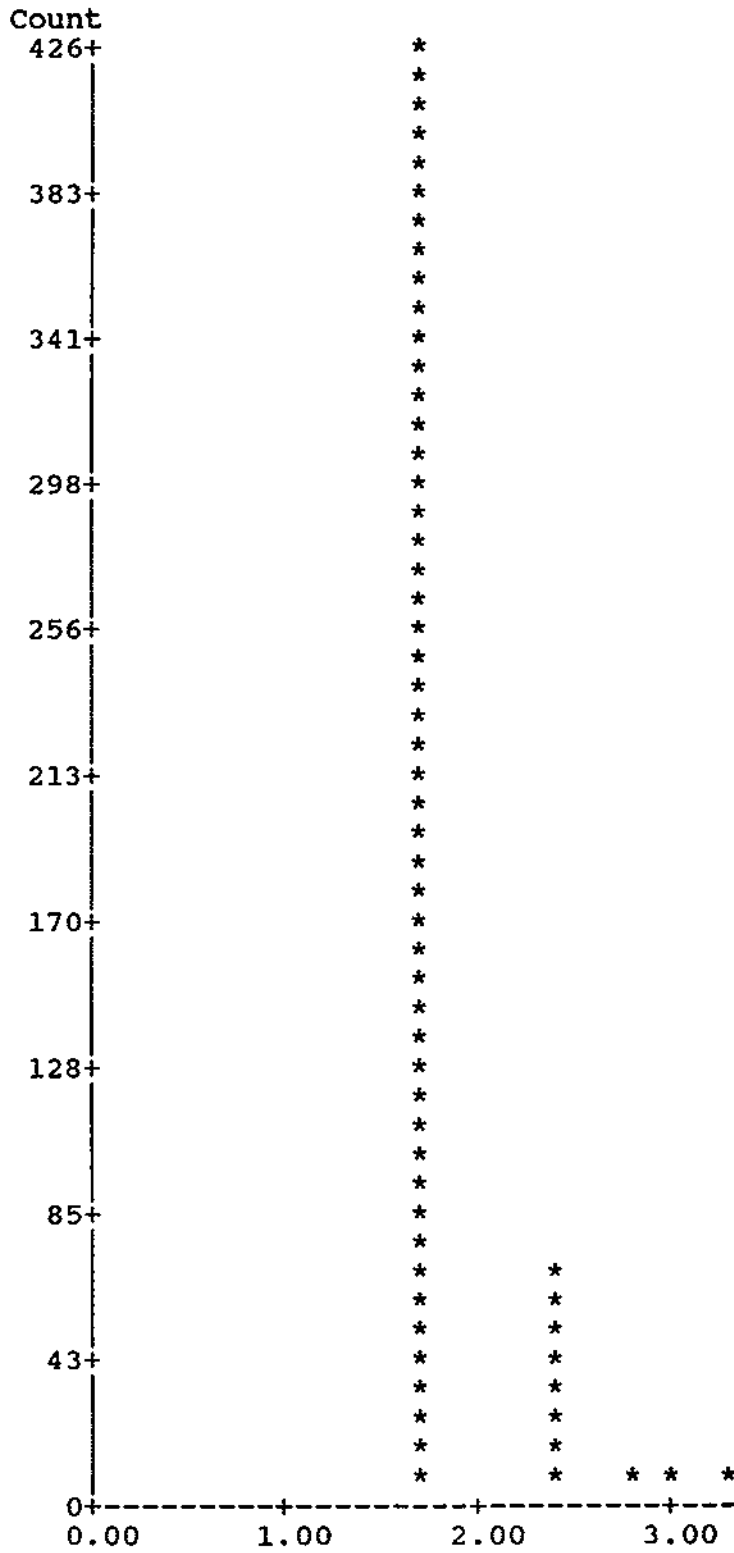
Histogram for AU (Original observations)



CLASS INTERVAL = .1

500 observations within the range from 500 total.

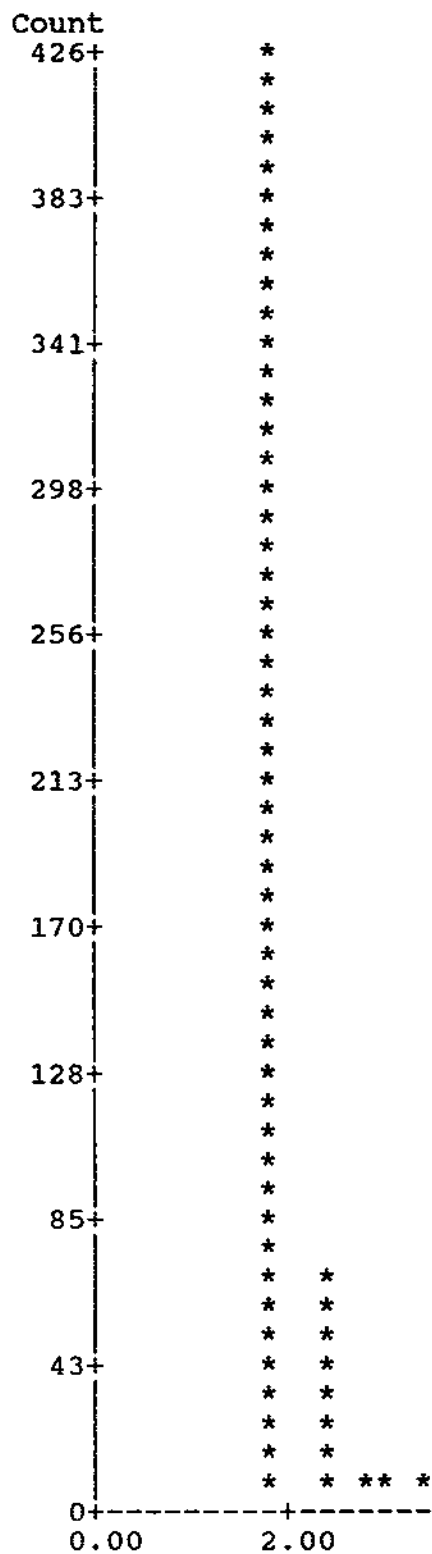
Histogram for AU (Natural logarithms)



CLASS INTERVAL = .2

500 observations within the range from 500 total.

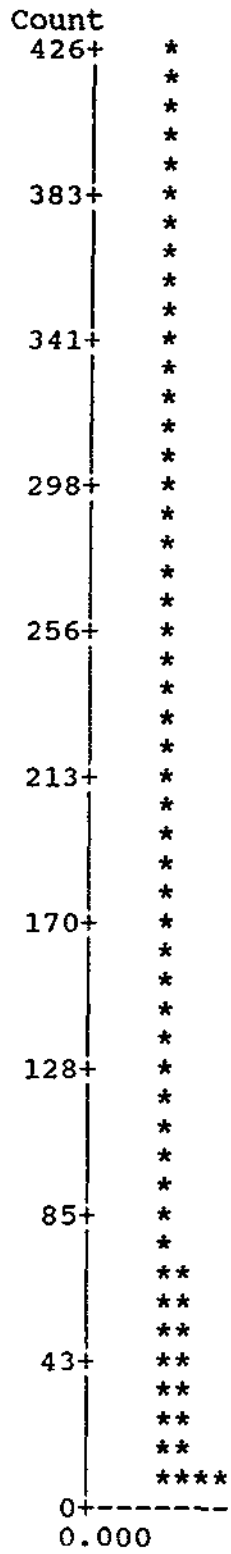
Histogram for AU (Natural logarithms)



CLASS INTERVAL = .5

500 observations within the range from 500 total.

Histogram for AU (Natural logarithms)



 Analysis for SB

| | Original Observations | Loga- rithms |
|---|--------------------------|-----------------|
| ----- | | |
| Mean | 1.78 | 0.45 |
| Variance | 0.92 | 0.23 |
| Standard deviation | 0.96 | 0.48 |
| Geometric mean | 1.57 | |
| Multiplying factor for the geometric mean | 1.26 | |
| Estimate of the mean from logarithms | 1.76 | |
| Estimate of the variance from logarithms | 0.82 | |
| Coefficient of variation, C(1) | 0.51 | |
| | C(2) | 0.54 |
| | C(3) | 0.51 |
| Number of observations | 500 | |

Points for the Confidence Region

| No. | Original observations | | Logarithms | |
|-----|-----------------------|-----------------------|------------|-----------------------|
| | Mean | Standard Deviation | Mean | Standard Deviation |
| 1 | 1.71 | 0.91 | 0.41 | 0.50 |
| 2 | 1.71 | 0.90 | 0.41 | 0.50 |
| 3 | 1.71 | 0.89 | 0.41 | 0.49 |
| 4 | 1.70 | 0.88 | 0.41 | 0.49 |
| 5 | 1.70 | 0.87 | 0.41 | 0.48 |
| 6 | 1.70 | 0.85 | 0.42 | 0.48 |
| 7 | 1.69 | 0.84 | 0.42 | 0.47 |
| 8 | 1.69 | 0.83 | 0.42 | 0.46 |
| 9 | 1.69 | 0.82 | 0.42 | 0.46 |
| 10 | 1.72 | 0.93 | 0.41 | 0.51 |
| 11 | 1.72 | 0.94 | 0.41 | 0.51 |
| 12 | 3.45 | 1.84 | 0.49 | 0.50 |
| 13 | 3.43 | 1.81 | 0.49 | 0.50 |
| 14 | 3.41 | 1.78 | 0.49 | 0.49 |
| 15 | 3.39 | 1.75 | 0.49 | 0.49 |
| 16 | 3.38 | 1.72 | 0.49 | 0.48 |
| 17 | 3.36 | 1.69 | 0.49 | 0.48 |
| 18 | 3.34 | 1.66 | 0.48 | 0.47 |
| 19 | 3.32 | 1.63 | 0.48 | 0.46 |
| 20 | 3.30 | 1.60 | 0.48 | 0.46 |
| 21 | 1.75 | 0.95 | 0.43 | 0.51 |
| 22 | 1.77 | 0.97 | 0.44 | 0.51 |
| 23 | 1.80 | 0.98 | 0.46 | 0.51 |
| 24 | 1.83 | 1.00 | 0.47 | 0.51 |
| 25 | 1.71 | 0.83 | 0.43 | 0.46 |
| 26 | 1.73 | 0.84 | 0.44 | 0.46 |
| 27 | 1.76 | 0.85 | 0.46 | 0.46 |
| 28 | 1.78 | 0.86 | 0.47 | 0.46 |
| 29 | 3.47 | 1.87 | 0.49 | 0.51 |
| 30 | 3.48 | 1.90 | 0.49 | 0.51 |

GEOCHEMICAL DATA
 FOR LIVGARD
 TOBEX RESOURCES LTD.

++++VARIABLE: SB

Total observations = 500 Number above detection limit = 500

T(5)% = 1.96

| Mean | Variance | Standard Deviation | Coefficient of Variation |
|------|----------|--------------------|--------------------------|
| 2 | 1 | 1 | 1 |

| Confidence Limits | Lower | Upper |
|-------------------|-------|-------|
| | ----- | ----- |
| Mean | 2 | 2 |
| Variance | 1 | 1 |

Minimum value: 1
 Maximum value: 7

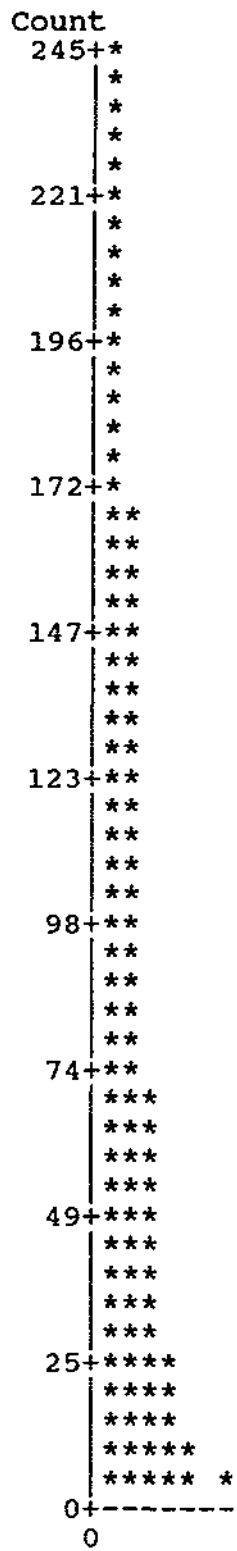
FREQUENCY DISTRIBUTION

500 values from 500 observations
 Class interval = 1

| Number | Class Interval | Frequency | Relative Freq. (%) | Cumulative Frequency | Relative Cum. Freq. (%) | |
|--------|----------------|-----------|--------------------|----------------------|-------------------------|--------|
| 1 | 0.00 - | 1.00 | 0 | 0.00 | 0 | 0.00 |
| 2 | 1.00 - | 2.00 | 245 | 49.00 | 245 | 49.00 |
| 3 | 2.00 - | 3.00 | 162 | 32.40 | 407 | 81.40 |
| 4 | 3.00 - | 4.00 | 64 | 12.80 | 471 | 94.20 |
| 5 | 4.00 - | 5.00 | 20 | 4.00 | 491 | 98.20 |
| 6 | 5.00 - | 6.00 | 8 | 1.60 | 499 | 99.80 |
| 7 | 6.00 - | 7.00 | 0 | 0.00 | 499 | 99.80 |
| 8 | 7.00 - | 8.00 | 1 | 0.20 | 500 | 100.00 |

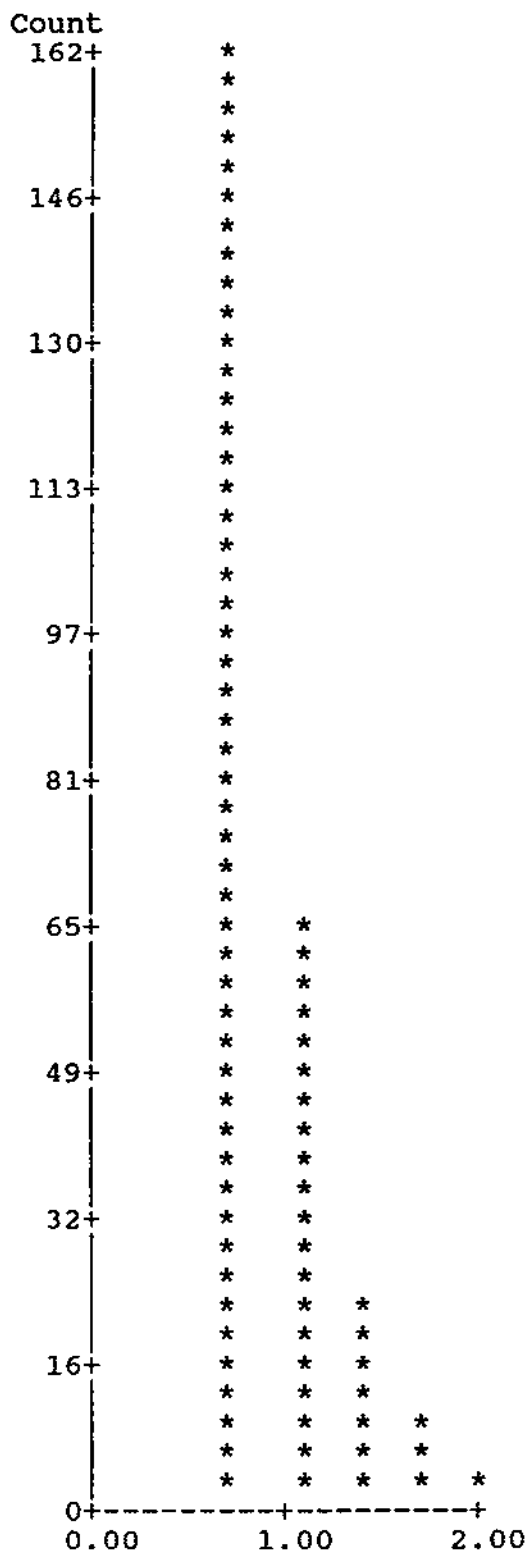
500 observations within the range from 500 total.

Histogram for SB (Original observations)



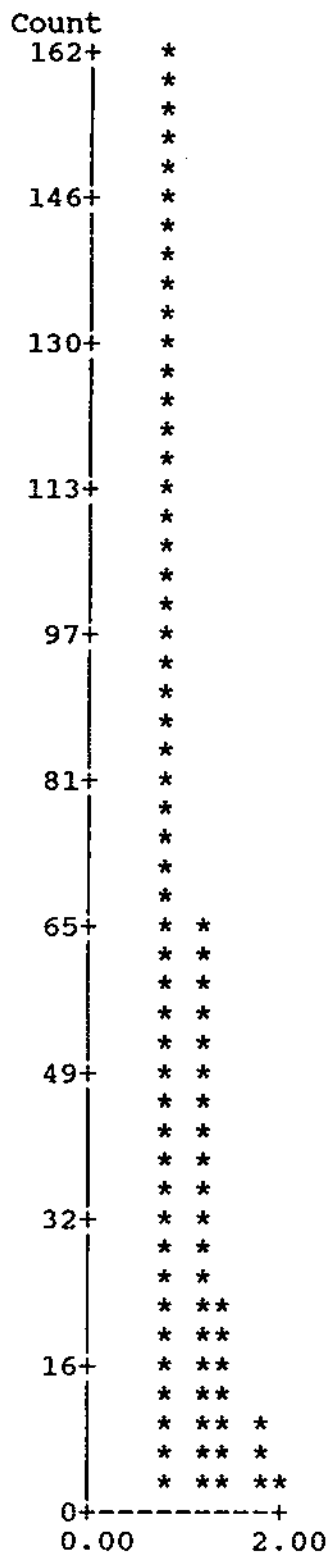
255 observations within the range from 500 total.

Histogram for SB (Natural logarithms)



255 observations within the range from 500 total.

Histogram for SB (Natural logarithms)



 Analysis for SB

| | Original Observations | Loga- rithms |
|---|--------------------------|-----------------|
| Mean | 1.78 | 0.45 |
| Variance | 0.92 | 0.23 |
| Standard deviation | 0.96 | 0.48 |
| Geometric mean | 1.57 | |
| Multiplying factor for the geometric mean | 1.26 | |
| Estimate of the mean from logarithms | 1.76 | |
| Estimate of the variance from logarithms | 0.82 | |
| Coefficient of variation, C(1) | 0.51 | |
| C(2) | 0.54 | |
| C(3) | 0.51 | |
| Number of observations | 500 | |

Points for the Confidence Region

| No. | Original observations | | Logarithms | |
|-----|-----------------------|-----------------------|------------|-----------------------|
| | Mean | Standard Deviation | Mean | Standard Deviation |
| 1 | 1.71 | 0.91 | 0.41 | 0.50 |
| 2 | 1.71 | 0.90 | 0.41 | 0.50 |
| 3 | 1.71 | 0.89 | 0.41 | 0.49 |
| 4 | 1.70 | 0.88 | 0.41 | 0.49 |
| 5 | 1.70 | 0.87 | 0.41 | 0.48 |
| 6 | 1.70 | 0.85 | 0.42 | 0.48 |
| 7 | 1.69 | 0.84 | 0.42 | 0.47 |
| 8 | 1.69 | 0.83 | 0.42 | 0.46 |
| 9 | 1.69 | 0.82 | 0.42 | 0.46 |
| 10 | 1.72 | 0.93 | 0.41 | 0.51 |
| 11 | 1.72 | 0.94 | 0.41 | 0.51 |
| 12 | 3.45 | 1.84 | 0.49 | 0.50 |
| 13 | 3.43 | 1.81 | 0.49 | 0.50 |
| 14 | 3.41 | 1.78 | 0.49 | 0.49 |
| 15 | 3.39 | 1.75 | 0.49 | 0.49 |
| 16 | 3.38 | 1.72 | 0.49 | 0.48 |
| 17 | 3.36 | 1.69 | 0.49 | 0.48 |
| 18 | 3.34 | 1.66 | 0.48 | 0.47 |
| 19 | 3.32 | 1.63 | 0.48 | 0.46 |
| 20 | 3.30 | 1.60 | 0.48 | 0.46 |
| 21 | 1.75 | 0.95 | 0.43 | 0.51 |
| 22 | 1.77 | 0.97 | 0.44 | 0.51 |
| 23 | 1.80 | 0.98 | 0.46 | 0.51 |
| 24 | 1.83 | 1.00 | 0.47 | 0.51 |
| 25 | 1.71 | 0.83 | 0.43 | 0.46 |
| 26 | 1.73 | 0.84 | 0.44 | 0.46 |
| 27 | 1.76 | 0.85 | 0.46 | 0.46 |
| 28 | 1.78 | 0.86 | 0.47 | 0.46 |
| 29 | 3.47 | 1.87 | 0.49 | 0.51 |
| 30 | 3.48 | 1.90 | 0.49 | 0.51 |

Analysis for SB

Original Loga-

PERSONNEL

Consultant: Egil Livgard, P.Eng and Supervisor (see Certificate)

Field Boss: Frank Renaudat
15 years experience in exploration field work
including numerous soil surveys

Crew: Derek Evans
3 years field experience in exploration

Thomas Duggan
3 years field experience in exploration



LIVGARD CONSULTANTS LTD.

717 - 837 West Hastings, Vancouver, B.C. V6C 1B6 Ph. 669-2426

COST STATEMENT

Donegal Developments Ltd., fieldwork consisting of:

Salaries:

| | | |
|-----------------------------------|-----------------|---------------------------|
| Frank Renaudat, 12 days @ 150.00 | \$ 1,800.00 | |
| Derek Evans, 12 days @ \$125.00 | 1,500.00 | |
| Thomas Duggan, 12 days @ \$125.00 | <u>1,500.00</u> | \$ 4,800.00 |
| Equipment rental (vehicle/camp) | 1,360.00 | |
| Accommodation, board | 1,258.38 | |
| Vehicle expense | 190.80 | |
| Air charter (helicopter) | 1,473.01 | |
| Field supplies | <u>387.52</u> | 4,668.99 |
| Assaying | | 8,279.29 |
| | | <hr/> |
| TOTAL | | <u><u>\$17,749.00</u></u> |

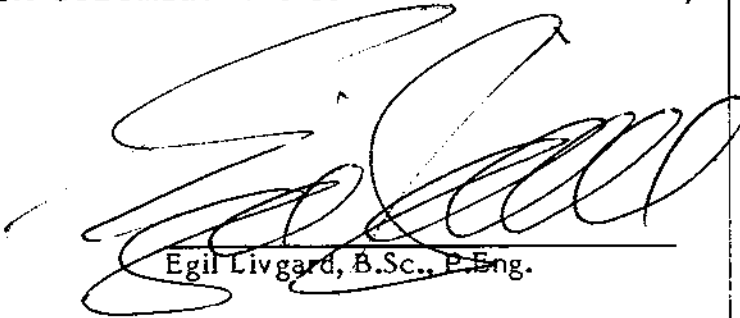


CERTIFICATE

I, EGIL LIVGARD, of 1990 King Albert Avenue, Coquitlam, B.C., DO HEREBY CERTIFY:

1. I am a Consulting Geological Engineer, practicing from #616 - 837 West Hastings Street, Vancouver, B.C.
2. I am a graduate of the University of British Columbia, with a B.Sc., 1960 in Geological Sciences.
3. I am a registered member in good standing of the Association of Professional Engineers of the Province of British Columbia.
4. I have practised my profession for over 25 years.
5. I have no direct, indirect or contingent interest in the AD claims #1 and #3 (or any nearby property) which is held by Tobex Resources Ltd., in the securities of Tobex Resources Ltd., direct or indirect, nor in any associated company, nor do I intend to receive any such interest.

DATED AT VANCOUVER, BRITISH COLUMBIA THIS 11TH DAY OF JANUARY, 1989.


Egil Livgard, B.Sc., P.Eng.



LIVGARD CONSULTANTS LTD.

717 - 837 West Hastings, Vancouver, B.C. V6C 1B6 Ph. 669-2426