

ARIS SUMMARY SHEET

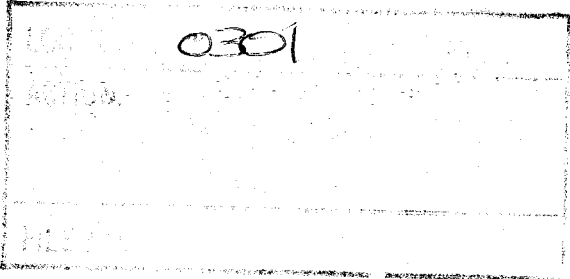
District Geologist, Kamloops

Off Confidential: 89.11.22

ASSESSMENT REPORT 18480

MINING DIVISION: Kamloops

PROPERTY: Best
LOCATION: LAT 51 32 30 LONG 120 13 00
UTM 10 5713517 693011
NTS 092P09E
CAMP: 039 Adams Plateau - Clearwater Area
CLAIM(S): Best 4
OPERATOR(S): Brican Res.
AUTHOR(S): Gilmour, W.R.
REPORT YEAR: 1989, 15 Pages
COMMODITIES
SEARCHED FOR: Gold
KEYWORDS: Triassic, Nicola Group, Fennel Formation, Limestone, Shale, Argillite
WORK
DONE: Prospecting, Geochemical
ROCK 11 sample(s) ; ME
Map(s) - 1; Scale(s) - 1:5000
RELATED
REPORTS: 13312



GEOCHEMICAL
ASSESSMENT REPORT

on the
BEST PROPERTY
(BEST 4 CLAIM)
LITTLE FORT AREA

KAMLOOPS MINING DIVISION, B.C.

NTS: 92P/9E
Latitude: 51° 32.5' North
Longitude: 120° 13' West
Owners: Brican Resources Ltd.
Consultants: Discovery Consultants
Author: W.R. Gilmour
Date: February 22, 1989

FILMED

**GEOLOGICAL BRANCH
ASSESSMENT REPORT**

18,480

TABLE OF CONTENTS

SUMMARY Page 1

LOCATION, ACCESS, TOPOGRAPHY Page 2

PROPERTY Page 3

HISTORY Page 3

GEOLOGY AND MINERALIZATION Page 4

SOIL SAMPLING Page 5

REFERENCES Page 7

STATEMENT OF COSTS Page 8

STATEMENT OF QUALIFICATIONS..... Page 9

APPENDIX GEOCHEMICAL LAB REPORT Page 10

ILLUSTRATIONS

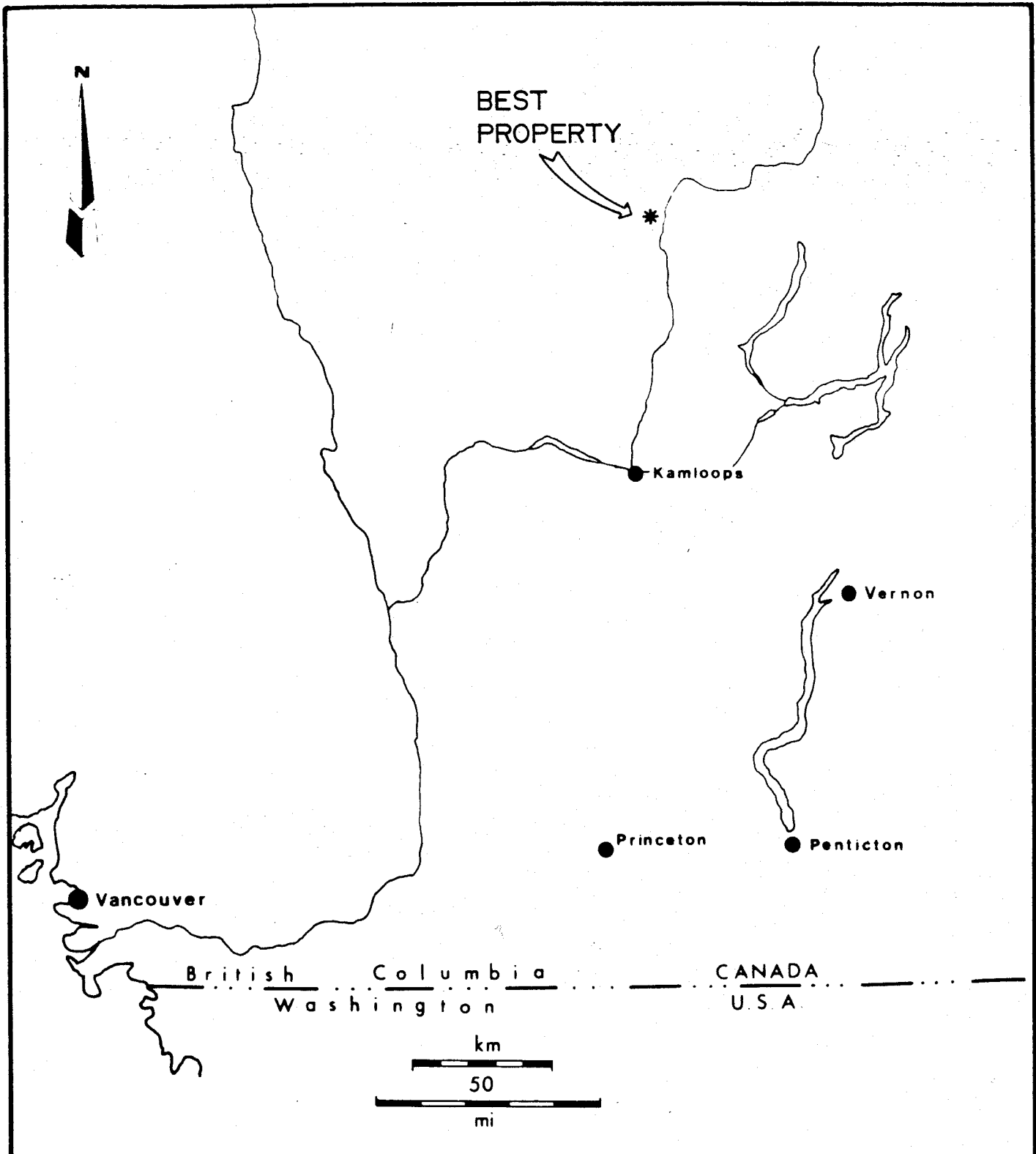
Figure 1	Location Map	Following Page 1
Figure 2	Index Map 1:50,000	Following Page 1
Figure 3	Sample Location Map 1:5,000	In Pocket

SUMMARY

The BEST property, owned 100% by Brican Resources Ltd., is located 17 km southwest of Clearwater, B.C. This report presents the results of exploration work carried out in 1988.

During 1988, prospecting and rock sampling were carried out to discover the source of a strong gold and arsenic soil anomaly.

The soil anomaly has not been satisfactorily explained.



DISCOVERY

Consultants

BRICAN RESOURCES LIMITED

BEST PROPERTY

LOCATION MAP

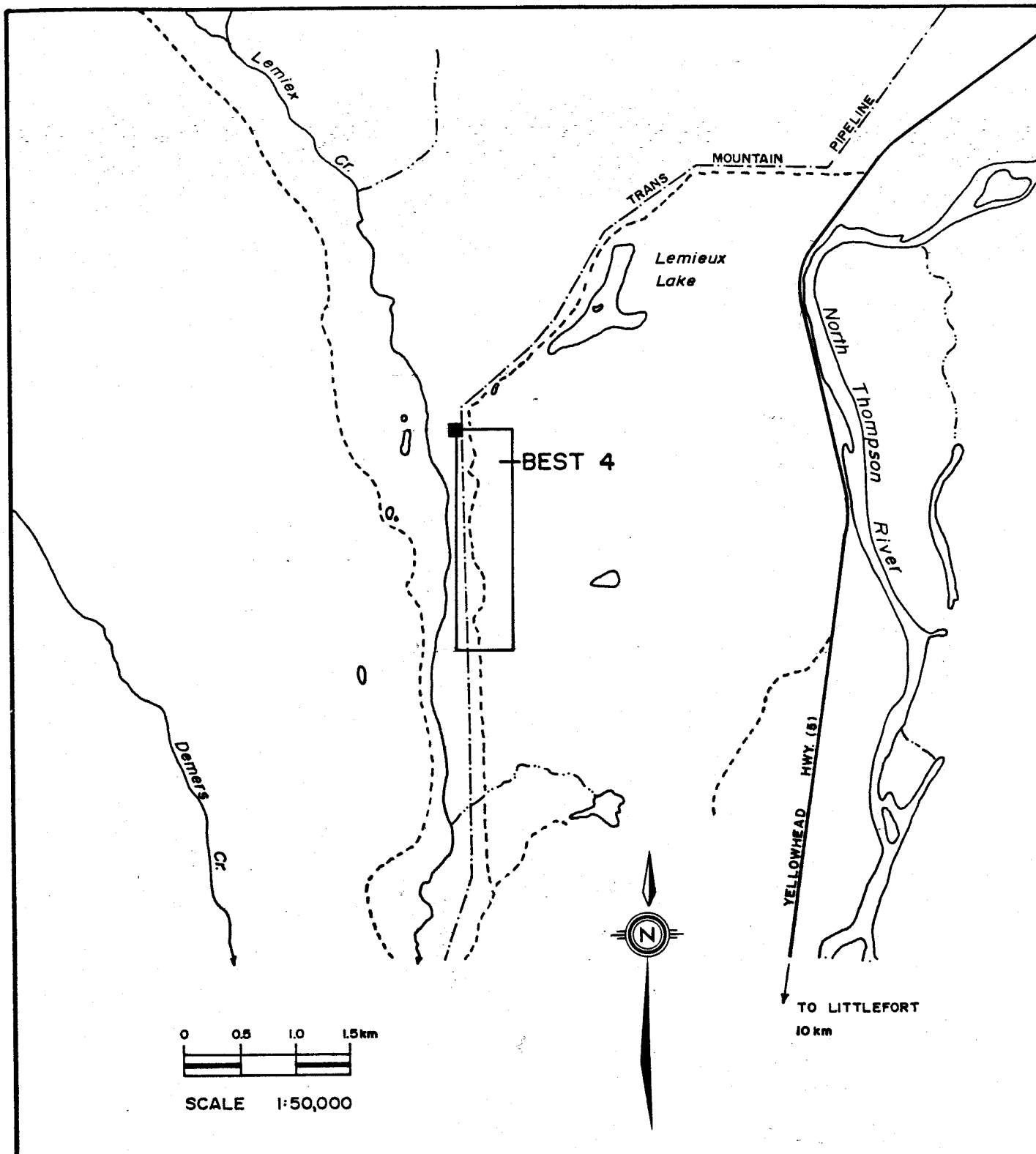
DATE: FEB. 28/1989 PROJECT: 163

SCALE: AS SHOWN

NTS. 92-P/9E

M.D. KAMLOOPS

FIGURE: 1



DISCOVERY Consultants		BRICAN RESOURCES LIMITED	
<i>BEST PROPERTY</i>		<i>CLAIM LOCATION MAP</i>	
DATE : FEB.28/1989	PROJECT : I63	SCALE : 1:50,000	N.T.S. : 92-P/9E
		M.D. : KAMLOOPS	FIGURE : 2

LOCATION, ACCESS, TOPOGRAPHY

The BEST property is located east of Lemieux Creek 17 km southwest of Clearwater and 12 km north of Little Fort (Figures 1,2).

The National Topographic reference is 92P/9E and the coordinates of the centre of the claim are 51°32.5' north and 120°13' west. The Legal Corner Post, is located 1000 m southwest of the southwest corner of Lemieux Lake on the Transmountain Pipe Line and B.C. Hydro right-of-way at an elevation of 730 metres.

Access is provided by travelling north from Little Fort for 8.5 km and thence by four-wheel drive vehicle along the Transmountain Pipe Line and B.C. Hydro access road for 6 km. Access from Clearwater is provided by travelling south on Highway 5 for 14 km then southwest for 7 km via the Lemieux Lake Transmountain/B.C. Hydro access road. The nearest major centre is Kamloops, 96 km south of Little Fort on Highway 5.

Topography is typical of the Thompson plateau with gently rolling uplands cut by streams with moderate valley slopes. Elevations vary from a maximum of 900 metres above sea level to 650 metres a.s.l.

Vegetation consists of dense forest of spruce, fir and cedar with patches of poplar and alder.

PROPERTY

The BEST property consists of the BEST 4 claim, comprising 4 units, in the Kamloops Mining Division (Figure 2). The claim was located on December 8, 1983, for Brican Resources Ltd. and recorded on December 14, 1983.

The following table lists the pertinent information on the claims.

<u>Claim Name</u>	<u>Record Number</u>	<u>No. of Units</u>	<u>Expiry Date</u>
BEST 4	5215	4	Dec. 14, 1990

The expiry date is based on acceptance of this assessment report.

HISTORY

In the 1920's there was some placer activity on Lemieux Creek. The source of the gold was not determined.

In 1984, Brican Resources Ltd. carried out a program of soil and rock sampling and geological mapping on the property.

GEOLOGY AND MINERALIZATION

The BEST property is underlain by the Fennell Formation and the western portion by the Nicola Group (Figure 3). The major north-south strike-slip(?) Louis Creek Fault zone juxtaposes these major rock units. Minor Tertiary(?) felsic dykes cut the older rocks.

The Fennell Formation of Devonian to Permian age is an allochthonous, oceanic terrane of metabasalt. The basalts are aphanitic, grey-green in colour and characteristically brecciated. The Nicola Group of Upper Triassic age consists of interlayered limestone, shale and siliceous argillite. The grey to black limestone beds generally range from 10 to 50 cm thick, although thicker beds do occur. The shales are generally black and fissile. The Nicola rocks trend north-northwest with a moderately westerly dip. Cleavage and minor folds were noted.

Orange-brown, usually well-altered and weathered dykes of limited extent cut the older rocks. Feldspar phenocrysts and flow(?) banding occur in these felsic rocks.

In the area of the BEST property the Louis Creek Fault is represented by an echelon faults creating an irregular contact. All rock units have been brecciated to some extent.

In 1984, high gold and arsenic values were discovered in rusty, calcite and quartz veins in altered felsic dykes.

SOIL SAMPLING

A total of 11 samples was sent to Bondar-Clegg and Company Ltd. in North Vancouver for analysis. The rocks were crushed and pulverized and the -150 mesh fraction was analysed for gold by the fire assay/atomic absorption method and for silver, arsenic, bismuth, cadmium, cobalt, chromium, copper, iron, manganese, molybdenum, nickel, lead, antimony, vanadium and zinc by I.C.P. methods following hot HNO_3 -HCl extraction

Sampling was concentrated in the area of a previously discovered soil anomaly (Au - 280,390,570 ppb; As - 565,655,1000 ppm) underlain by brecciated volcanic rocks of the Fennell Formation. Elevated arsenic values up to 263 ppm occur in pyritic, brecciated volcanic rocks with minor calcite stringers. The highest gold value in this area is 21 ppb, much lower than the soil values in the area.

The anomalous soil values might be due concentration in talus fines. It is also possible that the anomalies are caused by sub outcropping gold and arsenic bearing rocks.

All values are shown in Appendix 1.

ROCK SAMPLING DESCRIPTIONS

<u>Sample Number</u>	<u>Description</u>
Z-88-R-505	Outcrop, grab sample, fine grained, grey coloured volcanic with disseminated pyrite.
Z-88-R-506	Local angular float, greenish-grey volcanic with limonite in foliation planes, white quartz veinlets.
Z-88-R-507	Outcrop, grab sample, greenish coloured volcanic breccia with disseminated pyrite.
Z-88-R-508	Outcrop, grab sample, volcanic breccia, disseminated pyrite, calcite stringers.
Z-88-R-509	Local angular float, selective sample. Volcanic breccia with white quartz, chlorite veinlets.
Z-88-R-510	Outcrop, grab sample. Light green volcanic breccia with disseminated pyrite, slightly siliceous.
Z-88-R-511	Outcrop in road cut, grab sample, grey coloured shales with limy bands, minor limonite.
Z-88-R-512	Outcrop in road cut, grab sample. Rusty weathering, folded, sheared shales with calcite stringers.
Z-88-R-513	Outcrop in road cut, grab sample. Volcanic dyke, well brecciated, calcite welded, light-coloured pyrite in hairline fractures.
Z-88-R-514	Outcrop in road cut, grab sample. Well-fractured, pyritic volcanic with quartz & calcite veinlets, small hairline fractures filled with an unidentified black mineral.
Z-88-R-515	Local angular float, typical quartz-calcite vein material, milky white in colour, no sulphides.

REFERENCES

- Campbell, R.B. & Tipper, H.W. 1971 Geological Survey of Canada Memoir 363, Geology of Bonaparte Lake Map-Area, B.C.
- Gilmour, W.R. 1985 Assessment Report 13312
- Schiarizza, P. & Preto, V.A. 1984 B.C.M.E.M.P.R. Preliminary Map No. 56 Geology of the Adams Plateau - Clearwater Area.

STATEMENT OF COSTS

1.	Professional Services		
	W.R. Gilmour,		
	supervision and report writing		
	1 day @ \$400/day		\$ 400.00
2.	Personnel		
	Prospecting		
	Paul Ziebart October 12&13, 1988		
	2 days @ \$280/day	\$ 560.00	
	Data Compilation		
	.5 day @ \$280/day	<u>140.00</u>	700.00
3.	Analysis		
	Au + 15 element ICP package		
	11 samples @ \$19.85/sample		218.35
4.	Transport		
	4 x 4 Truck 685 km @ \$.40/km		274.00
5.	Office Expense		
	Drafting	241.00	
	Secretarial	100.00	
	Photocopies & Map prints	<u>150.00</u>	<u>491.00</u>
		Total	\$2083.35

STATEMENT OF QUALIFICATIONS

I, W.R. GILMOUR of 13511 Sumac Lane, Vernon, B.C., V1B 1A1,
DO HEREBY CERTIFY that:

1. I am a consulting Geologist in mineral exploration associated with Discovery Consultants, Vernon, B.C.
2. I have been practising my profession for 18 years.
3. I am a graduate of the University of British Columbia with a Bachelor of Science degree in geology.
4. I am a Fellow of the Geological Association of Canada.
5. this report is based upon knowledge of the BEST property gained from direct supervision of exploration work on the property.
6. I am a Director of Brican Resources Ltd., which owns the property.



W.R. Gilmour

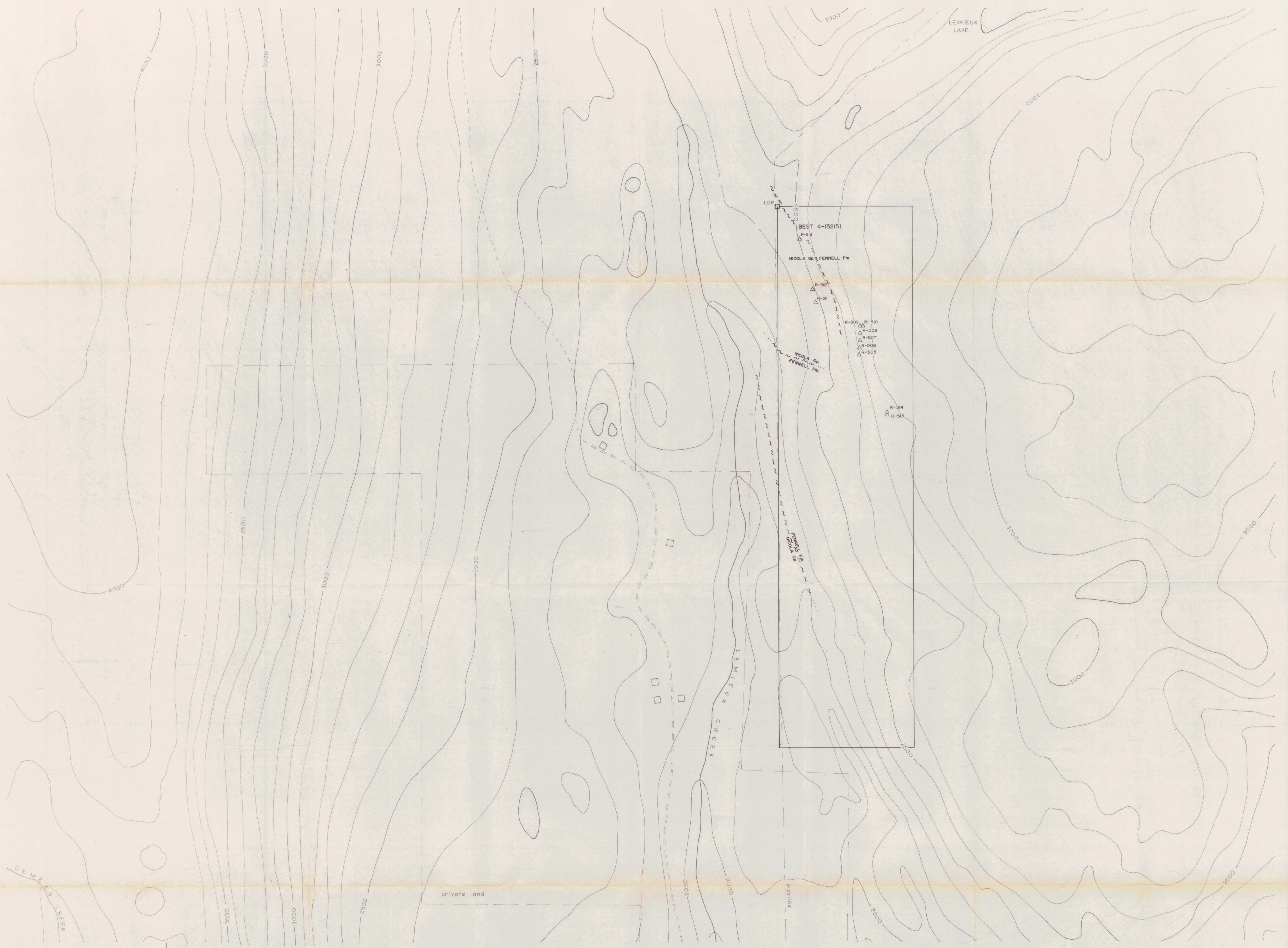
Vernon, B.C.
February 22, 1989

APPENDIX

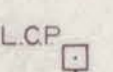

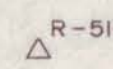
APPENDIX 1

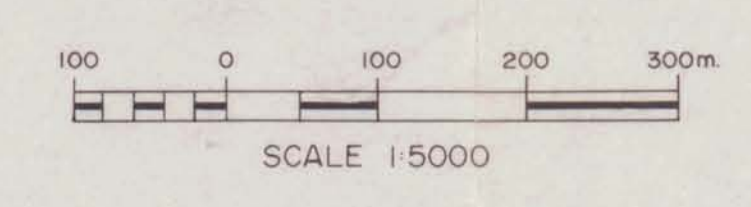
Geochemical Analysis

Sample ID	Au ppb	Ag ppm	As ppm	Bi ppm	Cd ppm	Co ppm	Cr ppm	Cu ppm	Fe %	Mn ppm	Mo ppm	Ni ppm	Pb ppm	Sb ppm	V ppm	Zn ppm
Rock Samples:																
Z-88-R 505	7	-0.5	51	-2	-1	29	128	55	5.55	665	-1	75	5	-5	121	67
Z-88-R 506	9	-0.5	69	-2	-1	28	165	39	5.41	739	-1	79	-5	-5	198	57
Z-88-R 507	9	-0.5	57	-2	-1	24	139	42	5.95	1504	-1	55	-5	9	173	73
Z-88-R 508	21	-0.5	263	-2	-1	36	165	52	6.43	1338	-1	78	-5	-5	218	69
Z-88-R 509	8	0.7	22	-2	-1	5	57	12	1.10	984	-1	12	6	8	37	15
Z-88-R 510	8	-0.5	100	-2	-1	29	148	41	6.55	1066	-1	70	-5	-5	177	66
Z-88-R 511	13	1.5	28	-2	17	5	36	37	1.56	325	19	52	13	9	98	306
Z-88-R 512	21	0.7	36	-2	-1	8	37	34	2.91	483	12	36	30	10	26	112
Z-88-R 513	5	-0.5	78	-2	-1	29	130	60	6.40	864	-1	71	-5	5	146	71
Z-88-R 514	33	-0.5	272	-2	-1	23	117	41	5.28	722	-1	58	-5	-5	150	75
Z-88-R 515	10	-0.5	39	-2	-1	2	125	6	0.59	283	1	5	5	-5	16	40



LEGEND

-  LEGAL CLAIM POST LOCATION
-  CLAIM BOUNDARY
-  ROCK SAMPLE LOCATION
(Values listed as Z-88-R 515.....)



**GEOLOGICAL BRANCH
ASSESSMENT REPORT**

18,480

BRICAN RESOURCES LIMITED

DISCOVERY Consultants

**BEST PROPERTY
SAMPLE LOCATION MAP**

DATE: FEB 28/1989	SCALE: 1:5000
PROJECT: 163	NTS: 92-P/9
FIGURE: 3	KAMLOOPS MINING DIVISION