

ARIS SUMMARY SHEET

District Geologist, Nelson

Off Confidential: 90.02.03

ASSESSMENT REPORT 18525

MINING DIVISION: Trail Creek

PROPERTY: Bluebird

LOCATION: LAT 49 03 37 LONG 117 47 50
UTM 11 5434243 441757
NTS 082F04W

CAMP: 005 Rossland Camp

CLAIM(S): Bluebird(L.1053)

OPERATOR(S): Antelope Res.

AUTHOR(S): Fowler, F.H.

REPORT YEAR: 1989, 22 Pages

COMMODITIES

SEARCHED FOR: Gold

KEYWORDS: Jurassic, Rossland Group, Tuff, Pyrite, Pyrrhotite, Arsenopyrite
WORK

DONE: Drilling

DIAD 60.1 m 1 hole(s);NQ
Map(s) - 3; Scale(s) - 1:250, 1:2500

RELATED

REPORTS: 16751

MINFILE: 082FSW145

LOG NO: 0505	RD.
ACTION:	
FILE NO:	

ASSESSMENT REPORT ON THE
BLUEBIRD - HOMESTAKE CLAIM GROUP
ROSSLAND, BRITISH COLUMBIA

Diamond Drill Hole 88-8
on the Bluebird (L. 1053) claim

Trail Creek Mining Division
NTS: 82 F/4 W
Longitude: 117° 47' 50"
Latitude: 49° 03' 40"

Owners: Antelope Resources Limited
Box 669 2038 Washington St.
Rossland, B.C. V0G 1Y0

Bryndon Ventures Inc.
Suite 300 - 837 Homer St.
Vancouver, B.C. V6B 2W2

Operator: Antelope Resources Limited

Author: Frank H. Fowler, Manager of Exploration
Antelope Resources Limited

May 2, 1989

**GEOLOGICAL BRANCH
ASSESSMENT REPORT**

18,525

TABLE OF CONTENTS

INTRODUCTIONpage 1

 Location and access 1

 General geographic and physiographic position 3

 Property definition, history. 4

 Current owner and project operator. 8

 Brief economic assessment 8

 Summary of work done. 9

DETAILED TECHNICAL DATA AND INTERPRETATION 10

ITEMIZED COST STATEMENT. 13

AUTHOR'S QUALIFICATIONS. 14

APPENDICIES.

 I. Drill log of Hole 88-8after text

 II. Certificate of Assay.after text

TABLE OF CONTENTS (con't)

LIST OF TABLES		PAGE
Table 1	Bluebird-Homestake Claim Group (list)	5
Table 2	Assay results	11
LIST OF FIGURES		
Figure 1	Index Map	2
Figure 2	Bluebird-Homestake Claim Group (map)	map envelope
Figure 3	Composite Location Map	map envelope
Figure 4	88-8 Diamond Drill Hole Section	map envelope

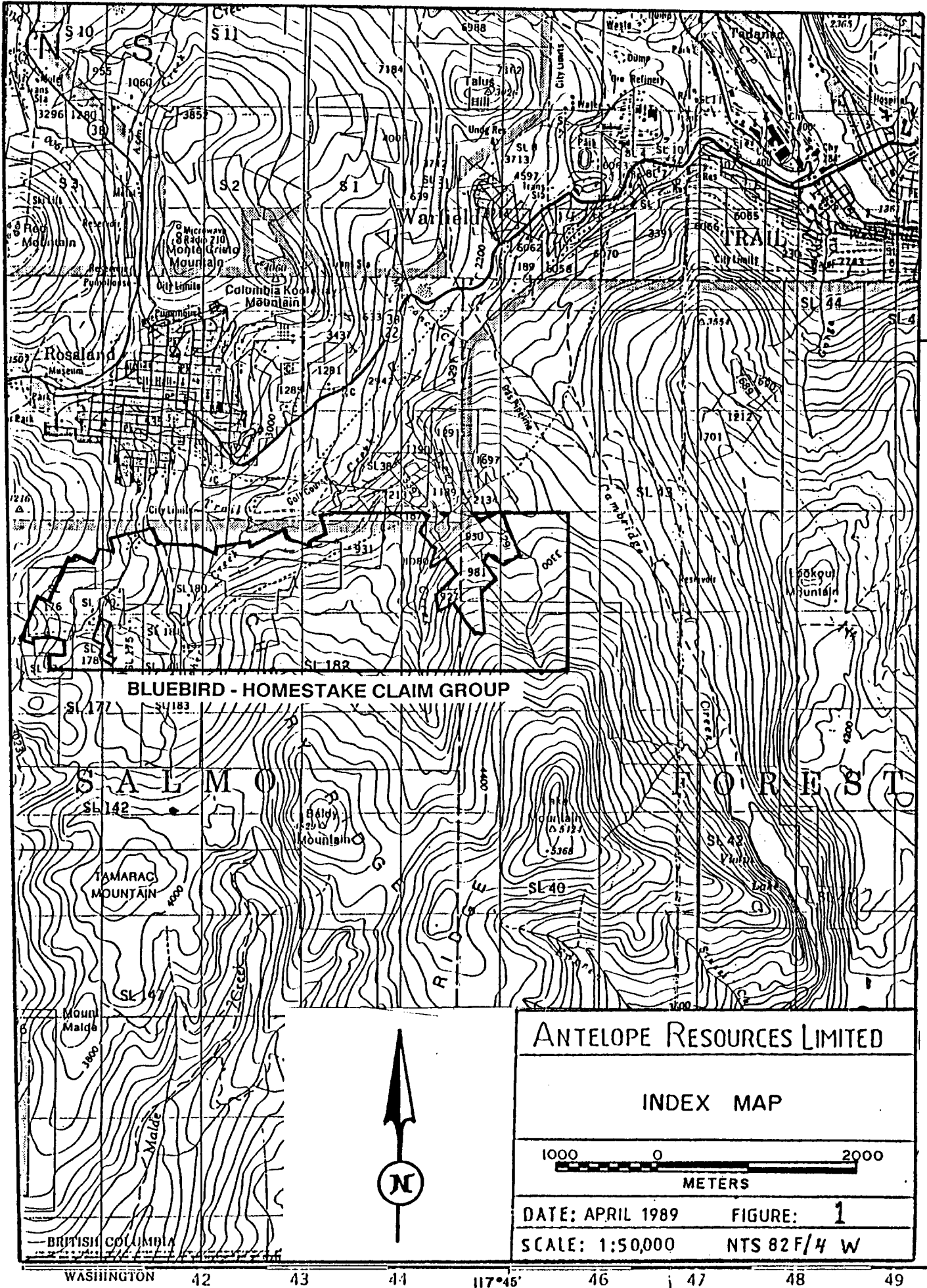
INTRODUCTION:

The diamond drilling described in this report is being presented as assessment work for the Golf #1 claim (Rec. No. 1069) of the Bluebird-Homestake claim group. Hole 88-8 was drilled February 10, 1988 on the Bluebird claim (L.1053) of this group and was followed by detailed logging, sampling and assay. This hole is part of an on-going exploration program whose goal is to locate and define economic concentrations of gold bearing massive sulphides along shear zones marginal to the monzonite intrusion which underlies the city of Rossland, B.C.

LOCATION AND ACCESS

The Bluebird-Homestake claim group is located immediately south and southeast of the City of Rossland in southeastern British Columbia. Rossland is located approximately 6 kilometers south-westerly from the City of Trail, B.C. and about 7 kilometres North of the United States border (Figure 1).

Geographic coordinates of the approximate center of the Bluebird-Homestake claim group are longitude $117^{\circ} 47' 50''$ W; latitude $49^{\circ} 03' 40''$ N on N.T.S. Map Sheet 82 F/4 W.



Rossland and vicinity is served by major provincial highways and by the Castlegar airport located about 26 kilometers North of Trail, B.C. Access to the property is by means of well maintained paved roads within and south from Rossland and by various gravel and 4-wheel drive roads. Drill hole 88-8 is located at the margin of an abandoned railroad grade which links Rossland and Trail.

GENERAL GEOGRAPHIC AND PHYSIOGRAPHIC POSITION

Relief on the Bluebird-Homestake claim group is approximately 428 meters with moderate to locally steep slopes. An existing system of gravel and 4-wheel drive roads provide good access to much of the property and the remainder could be reached by bulldozer. The portals of the old Bluebird and Homestake workings are between 850 and 915 meters above sea level.

The region has been affected by continental glaciation. Two ice directions have been recorded with the final advance being south to southwest. The Bluebird-Homestake claim group is almost totally blanketed by a thin cover on the order of 3 to 8 meters in thickness. Consequently, outcrop is limited.

The property is moderately treed with some locally dense bushy areas. Interior Douglas fir and Lodgepole pine with localized stands of cedar are the predominate forest cover. Numerous stands of poplar and birch occur in the lower elevations and along drainages. As a result of vertical clear-cut logging in the early 1900's, few stands of merchantable timber occur. All surface rights within the claim group are privately owned, predominantly by others.

Although snow covered for upwards of four months per year, the property is accessible year round, allowing all but surface geological mapping programs to be conducted.

PROPERTY DEFINITION AND HISTORY

The Bluebird-Homestake claim group consists of 39 contiguous claims located immediately south and southeast of the City of Rossland (Figure 1 and Figure 2). Of these, 15 are Crown Granted Mineral Claims, 1 is a Reverted Crown Granted Mineral Claim, 19 are Fractional Mineral Claims, 2 are Modified Grid Mineral Claims, and one is a 3-post Mineral Claim (Table 1).

The Lily May claim was the first recorded in the district after gold and silver were found there in 1887.

TABLE 1

BLUEBIRD-HOMESTAKE CLAIM GROUP

<u>Crown Granted Mineral Claims</u>	<u>Lot No.</u>
Celtic Queen	L. 987
Robert E. Lee	L. 1292
Maid of Erin	L. 1293
Gopher	L. 1050
Olla Podrida	L. 799
Red Eagle	L. 1615
Copper Queen	L. 1210
Homestake	L. 936
Bluebird	L. 1053
Hattie Brown	L. 1047
Alcome Fraction	L. 11468
Monday	L. 995
Tuesday	L. 1278
Richmond	L. 1508
Lily May	L. 1052
Black Horse	L. 1059

Reverted Crown Granted Mineral Claim

Hattie	L. 1054
--------	---------

Fractional Mineral Claims

	<u>Rec. No.</u>
Antelope #1 Fr.	1001
Antelope #2 Fr.	1002
Antelope #3 Fr.	1003
Antelope #4 Fr.	1004
Antelope #5 Fr.	1005
Antelope #6 Fr.	1006
Antelope #7 Fr.	1007
Antelope #8 Fr.	1016
Antelope #9 Fr.	1020
Antelope #10 Fr.	1021
Antelope #13 Fr.	1024
Antelope #14 Fr.	1058
Antelope #15 Fr.	1059
Antelope #20 Fr.	1083
Antelope #21 Fr.	1075
Antelope #22 Fr.	1076
Antelope #23 Fr.	1077
Antelope #41 Fr.	1242
Antelope #42 Fr.	1243

TABLE 1 (continued)

BLUEBIRD-HORSESHOE CLAIM GROUP

<u>Modified Grid Mineral Claims</u>	<u>Sec. No.</u>
Golf # 1	1069
Antelope	1029
 <u>2-post Mineral Claim</u>	
Key 1	1244

1889. This was followed by the discovery and development of the Le Roi, Centre Star, War Eagle and other famous mines of the Rossland camp some 2 kilometers to the north-west which produced over 3,000,000 ounces of gold and an equal amount of silver until their closure in 1928.

Between 1889 and 1938 the Crown Granted mineral claims of this group were staked by different owners and a limited amount of development and production (535 tons) were effected. In 1947 Rossland Mines Ltd. assembled a land package including this group and, until 1956, carried out exploration and underground development work leading to calculation of ore reserves, a mill feasibility study and production of 1077 tons of Pb-Zn-Ag ore from the Bluebird-Mayflower zone.

Between 1962 and 1967 ground electromagnetic, magnetometer, potentiometer and soil surveys of selected claims under various option agreements, including Noranda Inc. and Northwood Mining Ltd., were carried out. Between 1972 and 1980 part of this group was leased by Ross Island Mining Co. Ltd. (previously Rossland Mines Ltd.) to Standonray Mines who produced 6450 tons of Pb-Zn-Ag ore from the Bluebird zone.

In the period from 1981 through 1986 Bryndon Ventures Inc. (previously Ross Island Mining Co. Ltd.) updated the ore reserve calculations of the Bluebird-

Mayflower zone and carried out surface geophysical surveys, trenching and 631 meters of diamond drilling along the Gopher-Homestake, Bluebird-Mayflower and North shear zones.

In 1987 this group, along with other claims, was optioned by Bryndon Ventures Inc. to Antelope Resources Limited culminating in a joint venture agreement between these two parties with Antelope as operator to carry out exploration in the Rossland area. Additional surface geophysical surveys (VLF-EM, magnetometer, Pulse EM and IP/resistivity) were carried out followed by the diamond drilling of which hole 88-8 is a part (Figure 3).

CURRENT OWNER AND OPERATOR OF THE PROJECT

The Bluebird-Homestake claim group is jointly owned by Bryndon Ventures Inc. and Antelope Resources Limited under the terms of a joint venture agreement between these two parties. Antelope Resources Limited is the operator.

BRIEF ECONOMIC ASSESSMENT

At the current stage of exploration no economic reserves have been outlined, but drill intersections of similar grade and thickness to those reported in the Le

Roi mine area have been cut. The shear zones marginal to the Roseland monzonite have been traced for over 1000 meters at surface. Much additional drilling will be necessary to test for possible economic concentrations of gold bearing sulphides within these shears. Due to the strong similarities in host rock, grade and thickness of mineralized intersections, associated alteration, sulphide assemblage and spacial relationship to the Roseland monzonite, there is reason to believe that ore deposits of the Le Roi type could exist within this claim group.

SUMMARY OF WORK DONE

The work for this report is diamond drill hole 80-C of 60.96 meters total length and the assays done on the 16 samples taken from it. A detailed geologic log of this hole (Figure 4), as well as a down-hole dip test measurement, is also included.

DETAILED TECHNICAL DATA AND INTERPRETATION

Hole 88-8 was drilled February 10, 1988 to test coincident VLF-EM and IP/resistivity geophysical anomalies along the western extension of the North shear zone (Figure 3). Since this shear zone was thought to dip steeply to the north and strike approximately N 70° E, hole 88-8 was drilled at an inclination of 45° from the horizontal in a 170° azimuth direction in order to intersect the shear zone as close to perpendicular as possible. The inclination at the bottom of the hole, as measured by acid bottle, was also 45° from the horizontal. No measurement was taken of the azimuthal direction at the end of the hole. The core diameter is NQ. The elevation of the collar of 88-8 is 932 meters above sea level. The core is presently in outdoor storage on the Bluebird claim (Figure 3).

The detailed drill hole log (Figure 4 and Appendix I) shows that the predominant rock type encountered is a fine-grained dark, tuff containing a variable amount of coarse to medium rounded fragments. This unit is cut by a grey, prophyritic flow. Both units pertain to the Rosslund volcanic sequence into which the Rosslund monzonite was intruded.

Pyrite and pyrrhotite are found disseminated throughout most of the volcanics, generally making up 1-2% of the rock but occasionally reaching 5% or forming centimetric knots of massive sulphide. Silicification and minor brecciation, indicative of the shear zone, are found in the lower half of the hole. 16 samples were taken from the silicified shear from 35.05 to 44.84 meters and 54.38 to 60.50 meters. These were fire assayed for gold by Bondar-Clegg and the results are shown on Table 2.

Since no significantly anomalous gold values were noted from this hole, no further drilling is being planned for the immediate vicinity.

TABLE 2

ASSAY RESULTS

<u>Sample #</u>	<u>Interval (m)</u>	<u>Length (m)</u>	<u>oz/t Au</u>
161	35.05-36.05	1.0	0.002
162	36.05-37.05	1.0	0.002
163	37.05-38.10	1.05	<0.002
164	38.10-38.85	0.75	<0.002
165	38.85-40.00	0.15	0.002
166	40.00-41.14	1.14	<0.002
167	41.14-41.84	0.70	0.003
168	41.84-42.84	1.0	<0.002
169	42.84-43.84	1.0	<0.002
170	43.84-44.84	1.0	<0.002
160	54.38-55.38	1.0	0.002
159	55.38-56.38	1.0	<0.002
158	56.38-57.43	1.05	<0.002
157	57.43-58.43	1.0	0.002
156	58.43-59.43	1.0	<0.002
155	59.43-60.50	1.07	0.003

ITEMIZED COST STATEMENT

60.06 meters of NO diamond drilling at \$55.77/m (200 ft. at \$17.00/ft)	\$ 3,400.00
16 sample prep. at \$3.75/sample	60.00
16 fire assay at \$9.75/sample	156.00
	=====
TOTAL	\$ 3,616.00



CERTIFICATE OF QUALIFICATIONS

I, Frank H. Fowler, of the City of Rossland, in the Province of British Columbia, do hereby certify that:

1. I am a geologist and Manager of Exploration for Antelope Resources Limited, located at 2038 Washington Street, Rossland, British Columbia, VOG 1Y0.
2. I have received the following degrees in Geological Sciences:
B. Sc. 1968 - Geology, Ohio State University
M. Sc. 1971 - Economic Geology, University of Minnesota
3. I have practiced my profession for the past 10 (ten) years and have been active in the mineral exploration industry for the past 21 (twenty-one) years.
4. I am a member of the Canadian Institute of Mining and Metallurgy, the Geological Association of Canada, and the Prospectors and Developers Association of Canada.
5. This report is based on an analysis of work done or compiled under my supervision on the property under investigation in the Rossland Camp.
6. I am not an Officer or Director of Antelope Resources Limited.

Antelope Resources Limited

Frank H. Fowler

Frank H. Fowler,
M. Sc. Economic Geology
Manager of Exploration

May 2, 1989
Rossland, British Columbia

APPENDIX I

Diamond Drill Record

ANTELOPE RESOURCES LIMITED

Name of property ROSSLAND BLUEBIRD-HOMESTAKE CLAIM GROUP

Hole No. 88-8 Length 60.96m Hole No. 88-8 Sheet No. 1
 Grid Coordinates Line 100 W 300N
 Elevation 932m Azimuth 170o Dip -45o
 Started February 10, 1988 Finished February 10, 1988 Logged by Frank H. Fowler

M E T R A G E		DESCRIPTION	S A M P L E			
FROM	TO		No.	from	to	Length
0	2.m	Casing in overburden.				
2.0	5.2	Fine grained dark tuff w/ rounded frag to 5cm diam. Highly fractured & oxidized along fracture surfaces.				
5.2	33.5	Grey, porphyritic flow w/ 1mm needles of augite oriented parallel to contacts. 1-2% disseminated py throughout; occ 1mm veins w/ py on surfaces. Light green mottled spots w/ py centres. Rare rounded frags. 3-5% py at 10.5-20.7m & 10cm of silic shear w/ po at 26.5m.				
33.5	60.96	Fine grain dark tuff as before. Bcc & silic from 35.05 to 44.5m w/ scattered lenses or knots of po at 37.5; 37.8; 38.25-38.4 & 39.6m. Then 3-5% disseminated py & po from 39.6 to end of hole.	161	35.05	36.05	1.m
			162	36.05	37.05	1.m
			163	37.05	38.10	1.05m
			164	38.10	38.85	75cm
			165	38.85	40.00	15cm
			166	40.00	41.14	1.14m
			167	41.14	41.84	70cm
			168	41.84	42.84	1.m
			169	42.84	43.84	1.m
			170	43.84	44.84	1.m
			160	54.38	55.38	1.m
			159	55.38	56.38	1.m
			158	56.38	57.43	1.05m
			157	57.43	58.43	1.m
			156	58.43	59.43	1.m
	60.96	End of hole.	155	59.43	60.50	1.07m

Frank H. Fowler

APPENDIX II

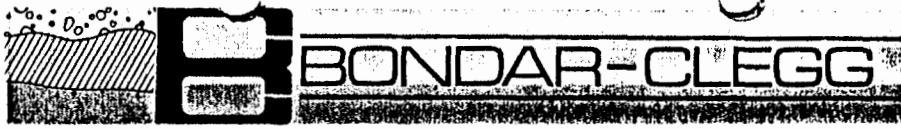


REPORT: U88-01469.4

PROJECT: NONE GIVEN

PAGE 1

SAMPLE NUMBER	ELEMENT UNITS	Au OPT	SAMPLE NUMBER	ELEMENT UNITS	Au OPT
D2 076		<0.002	D2 116		0.728
D2 077		0.002	D2 117		0.007
D2 078		0.053	D2 118		0.545
D2 079		0.012	D2 119		0.020
D2 080		0.040	D2 120		0.006
D2 081		0.136	D2 121		<0.002
D2 082		0.021	D2 122		<0.002
D2 083		0.002	D2 123		<0.002
D2 084		<0.002	D2 124		<0.002
D2 085		0.055	D2 125		<0.002
D2 086		0.004	D2 126		<0.002
D2 087		<0.002	D2 127		<0.002
D2 088		0.002	D2 128		<0.002
D2 089		0.002	D2 129		<0.002
D2 090		0.007	D2 130		<0.002
D2 091		0.006	D2 131		<0.002
D2 092		0.002	D2 132		<0.002
D2 093		0.002	D2 133		<0.002
D2 094		0.042	D2 134		<0.002
D2 095		0.012	D2 135		<0.002
D2 096		0.003	D2 136		<0.002
D2 097		0.011	D2 137		<0.002
D2 098		0.011	D2 138		<0.002
D2 099		<0.002	D2 139		<0.002
D2 100		<0.002	D2 140		0.005
D2 101		<0.002	D2 141		<0.002
D2 102		<0.002	D2 142		<0.002
D2 103		<0.002	D2 143		<0.002
D2 104		<0.002	D2 144		0.002
D2 105		<0.002	D2 145		0.003
D2 106		<0.002	D2 146		0.006
D2 107		<0.002	D2 147		0.003
D2 108		<0.002	D2 148		0.002
D2 109		<0.002	D2 149		0.002
D2 110		0.002	D2 150		<0.002
D2 111		<0.002	D2 151		0.007
D2 112		<0.002	D2 152		0.003
D2 113		<0.002	D2 153		<0.002
D2 114		<0.002	D2 154		0.002
D2 115		0.004	D2 155		0.003



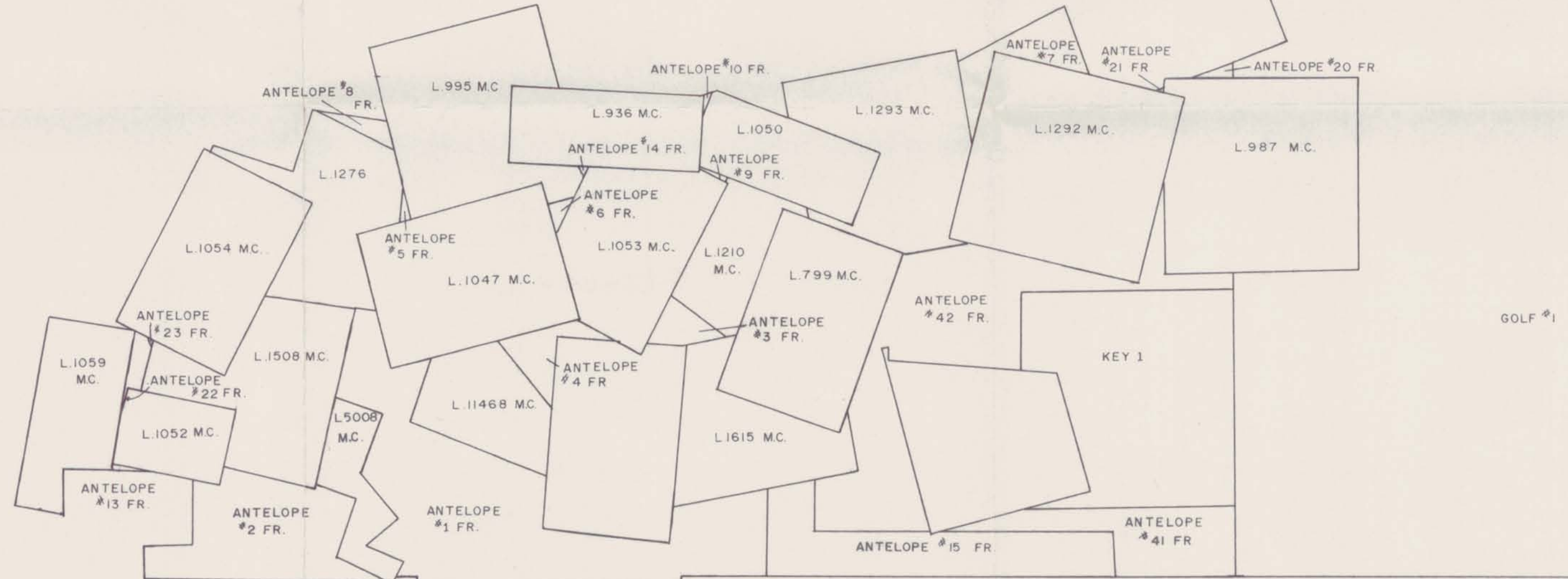
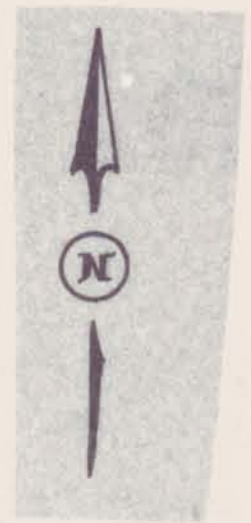
REPORT: V88-01469.4

PROJECT: NONE GIVEN

PAGE 2

SAMPLE NUMBER	ELEMENT UNITS	Au OPT	SAMPLE NUMBER	ELEMENT UNITS	Au OPT
D2 156		<0.002	D2 196		<0.002
D2 157		0.002	D2 197		<0.002
D2 158		<0.002	D2 198		<0.002
D2 159		<0.002	D2 199		<0.002
D2 160		0.002	D2 200		<0.002
D2 161		0.002	D2 201		0.002
D2 162		0.002	D2 202		0.002
D2 163		<0.002	D2 203		0.002
D2 164		<0.002	D2 204		0.002
D2 165		0.002	D2 205		0.003
D2 166		<0.002	D2 206		0.002
D2 167		0.003	D2 207		0.004
D2 168		<0.002	D2 208		0.002
D2 169		<0.002	D2 209		<0.002
D2 170		<0.002	D2 210		0.003
D2 171		<0.002	D2 211		0.003
D2 172		0.003	D2 212		0.003
D2 173		<0.002	D2 213		0.002
D2 174		<0.002	D2 214		0.006
D2 175		<0.002	D2 215		0.002
D2 176		<0.002	D2 216		<0.002
D2 177		0.002	D2 217		<0.002
D2 178		<0.002	D2 218		<0.002
D2 179		<0.002	D2 219		<0.002
D2 180		0.002	D2 220		<0.002
D2 181		0.002	D2 221		<0.002
D2 182		0.010	D2 222		<0.002
D2 183		<0.002	D2 223		<0.002
D2 184		0.002	D2 224		<0.002
D2 185		<0.002	D2 225		<0.002
D2 186		0.002	D2 226		0.002
D2 187		0.006	D2 227		0.002
D2 188		0.002	D2 228		<0.002
D2 189		0.002	D2 229		<0.002
D2 190		<0.002	D2 230		<0.002
D2 191		0.002	D2 231		<0.002
D2 192		<0.002	D2 232		<0.002
D2 193		0.002	D2 233		<0.002
D2 194		0.002	D2 234		<0.002
D2 195		<0.002	D2 235		<0.002

CITY OF ROSSLAND



GEOLOGICAL BRANCH
ASSESSMENT REPORT

18,525

ANTELOPE RESOURCES INC.
ROSSLAND PROPERTY TRAIL CREEK MINING DIVISION, B.C.
BLUEBIRD - HOMESTAKE CLAIM GROUP
0 50 100 150 200 METERS
DATE: FEB. 1989 SCALE: 1:2500
NTS 82F4/ W
FIGURE: 2