

LEGEND

LITHOLOGY	SURFICIAL	SYMBOLS
Snow Covered		outline of 1:5,000 geochron plots (Figures 4, 5 & 6)
Glacial		outline of 1:500 Main Showing (Figures 8 & 9)
Alluvial		outline of outcrop
	INTRUSIVE/DYKE	float sample
Rhyolite (Rhy)		hand trench
Andesite (And)		grab sample location
Basalt (Ba)		chip sample location
Aplite (Apl)		significant rock chip analysis: gold (ppb), silver (ppm), arsenic (ppm), bismuth (ppm), cobalt (ppm)
Feldspar Porphyry (FP)		limit of geological mapping
Granite (Gr)		geological boundary - definite, approximate, assumed
Monzonite (Mz)		fault - definite, approximate, assumed, inclined
Quartz Monzonite (Qtz Mz)		dike - inclined, vertical
Granodiorite (Gd)		bedding - inclined, vertical
Diorite (Di)		area with skarn mineralization
Hornblende (Hb)		occurrence of skarn mineralization
Pyroxenite (Pxy)		foliation - inclined, vertical
	VOLCANICS	MAGNETIC SURVEYS
Andesitic to Basaltic volcanics capping Teepee Peak		outline of magnetic high targets and target number defined by the airborne magnetic survey
	METAMORPHICS	
Marble/Limestone (LS)		
Metavolcanics/Greenstone (Gv)		
Schist (S)		
Gneiss (G)		
	ALTERATION	
Argillic (Arg)		
Hornfels (Hf)		
Skarn (SK)		
	ABBREVIATIONS	MINERALIZATION
actinolite act	chalcocite cal	azurite az
calcite cal	epidote ep	bornite bn
diopside dp	garnet gr	chalcocite chal
epidote ep	hornblende hb	chalcocite chr
garnet gr	quartz qz	erythrite ery
granite gr	quartz vein qv	magnetite mg
hornblende hb	silice, silicious sc	malachite mal
hornfels h	tremolite tr	pyrite py
quartz qz		pyrrhotite po
quartz vein qv		skutterudite sku
silice, silicious sc		
tremolite tr		

GEOLOGICAL BRANCH
ASSESSMENT REPORT
18,766
Part 2 of 2

CYPRUS GOLD (Canada) Ltd.	
T P PROPERTY GEOLOGY (NORTH SHEET)	
DRAWN BY M. Ferguson	SCALE 1:10,000
DATE November 1988	MAP No. 7



GEOLOGICAL BRANCH
ASSESSMENT REPORT

18,766

Part 2 of 2

TP PROPERTY GEOLOGY (SOUTH SHEET)	
DRAWN BY M. Ferguson	SCALE 1 : 10 000
DATE November 1988	MAP No. 7

LEGEND

LITHOLOGY

Snow Covered

SURFICIAL

INTRUSIVE/DYKE

Rhyolite (Rhy)
Andesite (And)
Basalt (Ba)
Feldspar Porphyry (FP)
Monzonite (Mz)

VOLCANICS

Andesitic to Basaltic volcanics capping Teepee Peak (Dac)

METAMORPHICS

Marble/Limestone (LS)
Schist (S) chlorite (cl), biotite (bi), amphibole (amp), quartz (qtx)

ALTERATION

Hornfels (Hf)
Skarn (SK)

ABBREVIATIONS

ALTERATION

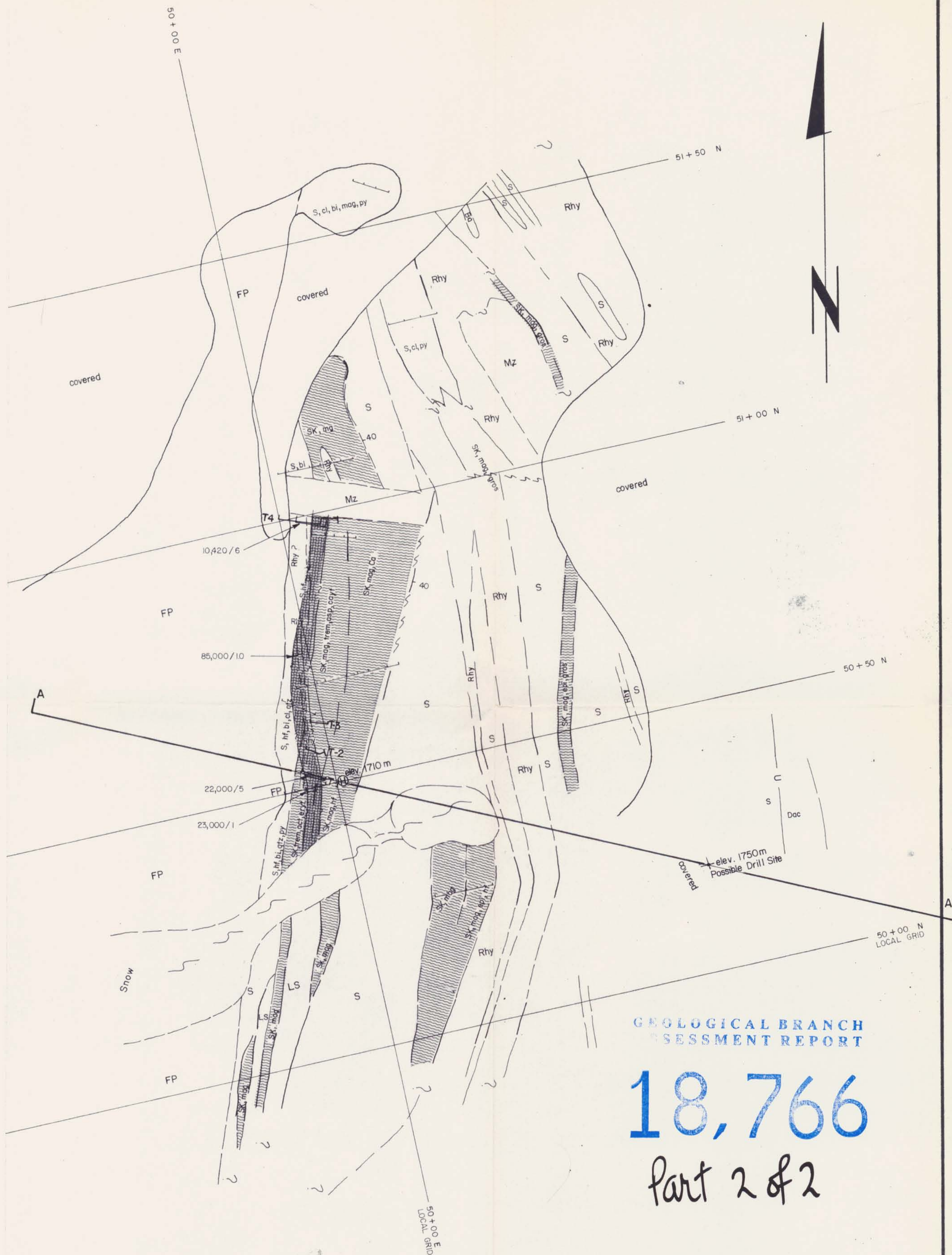
actinolite act
calcite cal
diopside dp
epidote ep
garnet gt
graphite gf
hornblende h
hornfels hf
quartz qtz
quartz vein qv
silica, silicious sc
tremolite tr

MINERALIZATION

azurite az
bornite bn
chalcocite chal
chalcopyrite cpy
erythrite ery
magnetite mg
malachite mal
pyrite py
pyrrhotite po
skutterudite sku

SYMBOLS

- (H) heliport
- A A' location of cross section A - A'
- elev. 1750m approximate elevation 1750 metres above sea level
- float sample
- location 1983 hand trench
- location of 1988 chip samples
- 27,250/1.0 significant analyses: ppb gold/width metres
- approximate outline of gold mineralized zone
- grab sample location
- limit of geological mapping
- geological boundary - definite, approximate, assumed
- fault - definite, approximate, assumed, inclined
- bedding - inclined, vertical
- area with skarn mineralization
- foliation - inclined, vertical



GEOLOGICAL BRANCH
ASSESSMENT REPORT

18,766

Part 2 of 2

CYPRUS GOLD
(Canada) Ltd.

MAIN SHOWING
GEOLOGY MAP

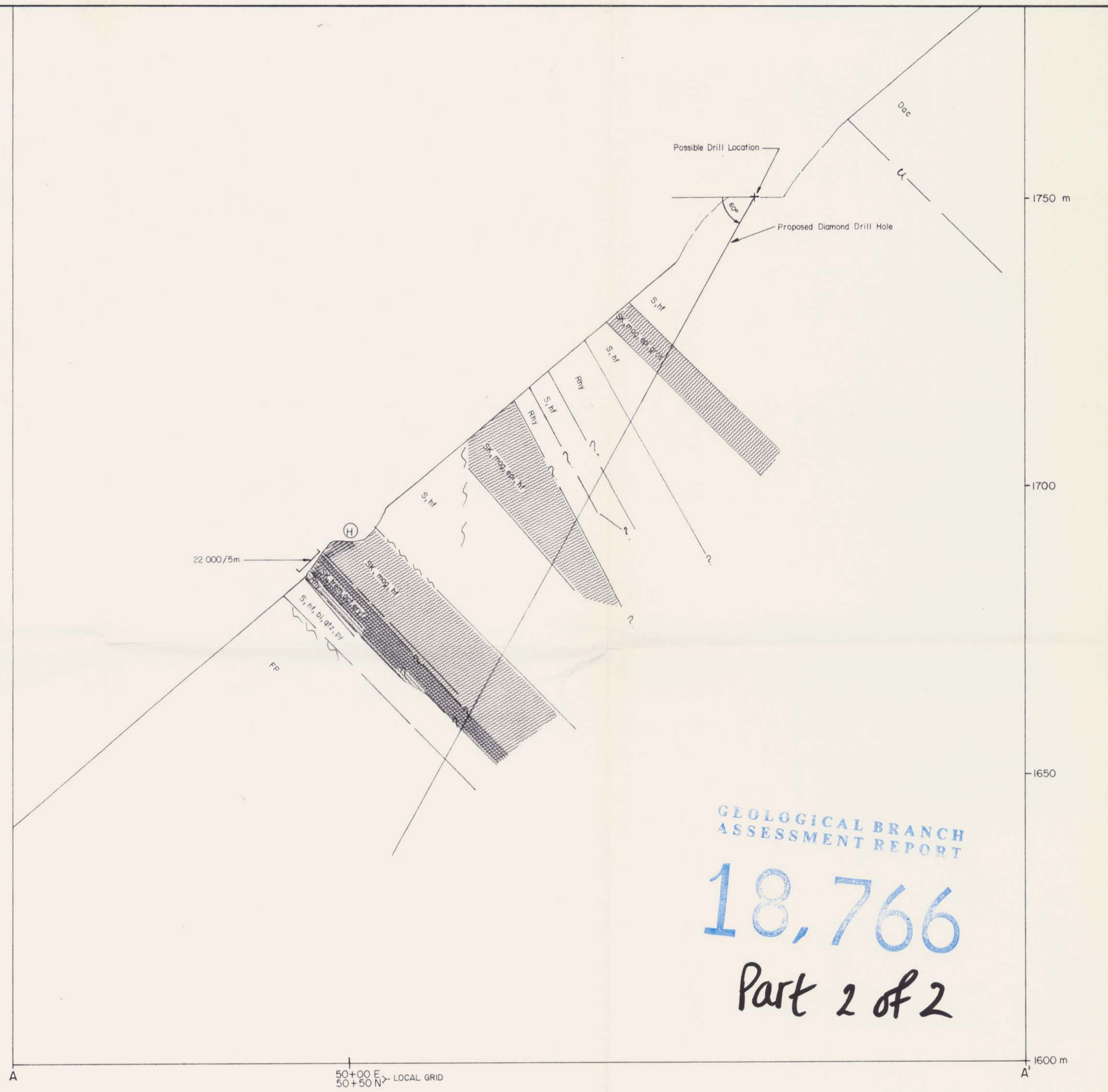
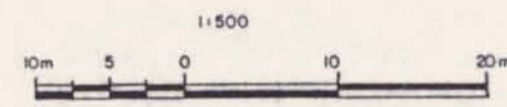
DRAWN BY: M. Ferguson
DATE: November 1988

SCALE: 1:500
MAP No. 8

- LEGEND**
- LITHOLOGY**
- SURFICIAL**
- Snow Covered
- INTRUSIVE/DYKE**
- Rhyolite (Rhy)
Andesite (And)
Basalt (Ba)
Feldspar Porphyry (FP)
Monzonite (Mz)
- VOLCANICS**
- Andesitic to Basaltic volcanics capping Teepee Peak (Dac)
- METAMORPHICS**
- Marble/Limestone (LS)
Schist (S) chlorite (cl), biotite (bi), amphibole (amp), quartz (qtx)
- ALTERATION**
- Hornfels (Hf)
Skarn (SK)

- ABBREVIATIONS**
- | | | | |
|-------------------|-----|-----------------------|------|
| ALTERATION | | MINERALIZATION | |
| actinolite | act | azurite | az |
| calcite | cal | bornite | bn |
| diopside | dp | chalcocite | chal |
| epidote | ep | chalcopyrite | cpy |
| garnet | gt | erythrite | ery |
| graphite | gf | magnetite | mg |
| hornblende | h | malachite | mal |
| hornfels | hf | pyrite | py |
| quartz | qtz | pyrrhotite | po |
| quartz vein | qv | skutterudite | sku |
| silica, silicious | sc | | |
| trenolite | tr | | |

- SYMBOLS**
- (H) heliport
- A — A' location of cross section A — A'
- + approximate elevation 1750 metres above sea level
- float sample
- location 1983 hand trench
- location of 1988 chip samples
- 22,000/5m significant analyses: ppb gold/width metres
- [hatched box] approximate outline of gold mineralized zone
- grab sample location
- limit of geological mapping
- , - - , - ? - geological boundary - definite, approximate, assumed
- ~ ~ ~ ~ ~ fault - definite, approximate, assumed, inclined
- , — bedding - inclined, vertical
- [hatched box] area with skarn mineralization
- E, E foliation - inclined, vertical

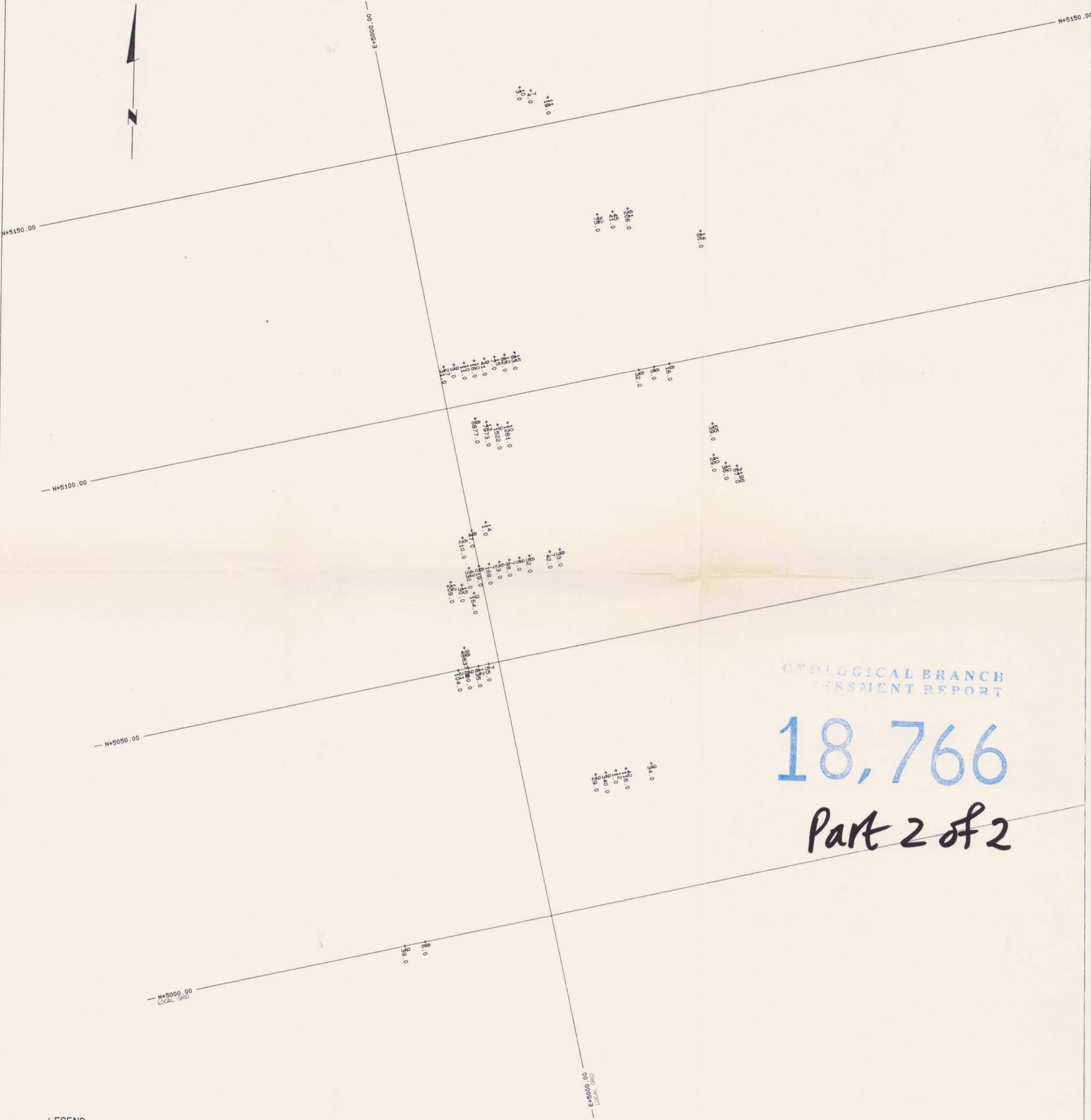
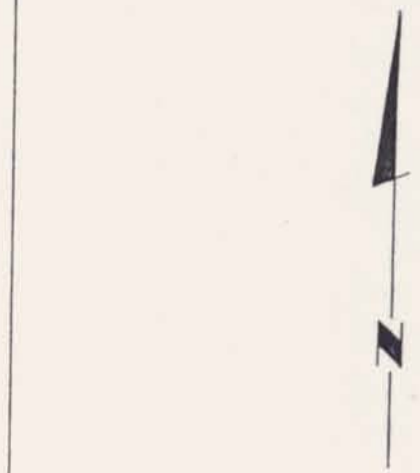


**GEOLOGICAL BRANCH
ASSESSMENT REPORT**

18,766

Part 2 of 2

CYPRUS GOLD (Canada) Ltd.	
MAIN SHOWING CROSS SECTION A-A' LOOKING NORTH	
DRAWN BY M. Ferguson	SCALE 1:500
DATE January 1989	MAP No. 8A



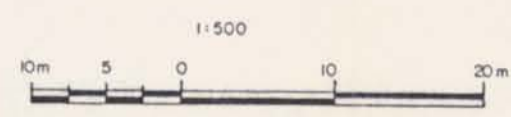
CYTOLOGICAL BRANCH
ASSESSMENT REPORT

18,766
Part 2 of 2

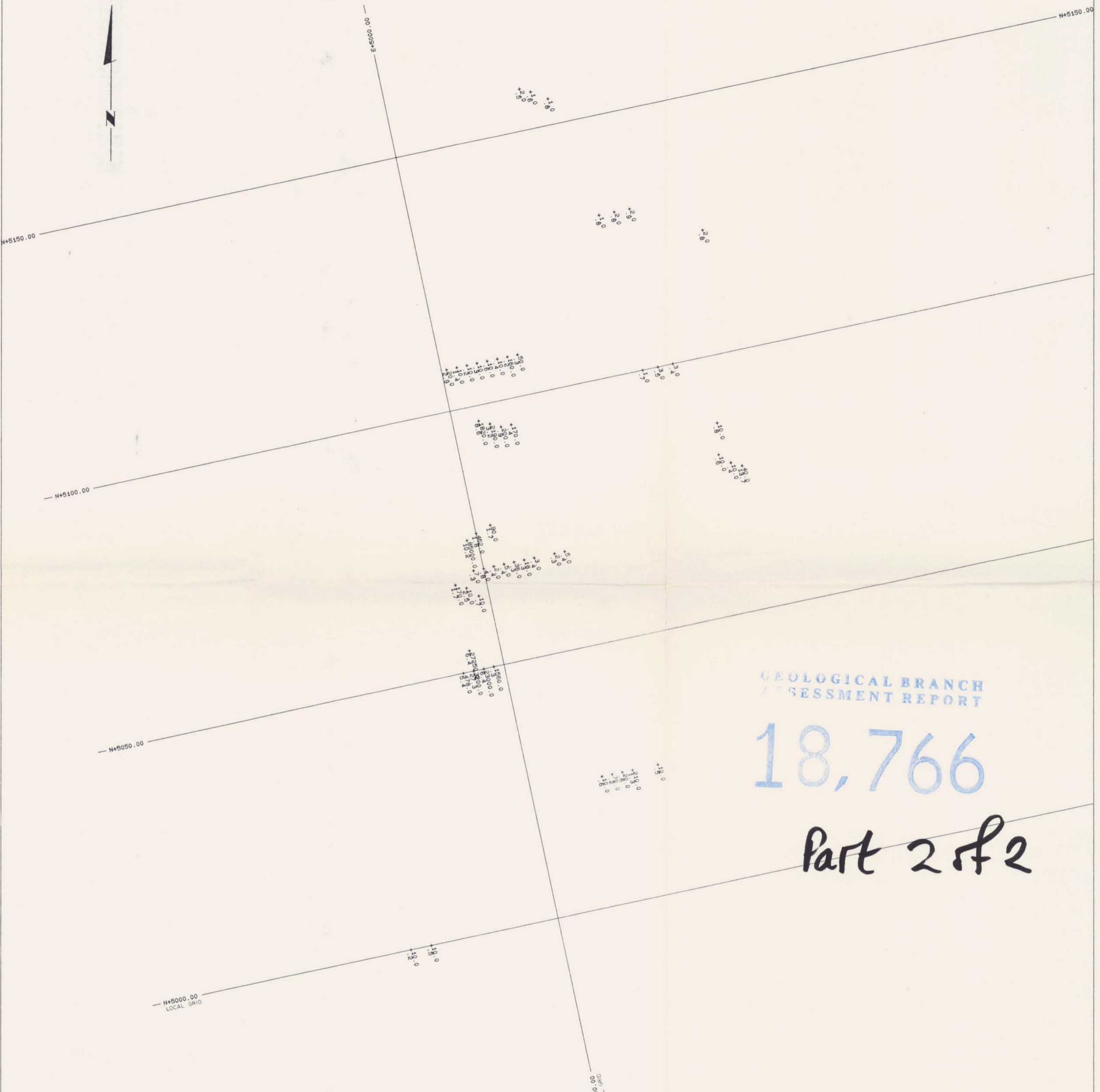
LEGEND

+⁸ Copper (ppm)
+²⁰⁰ Arsenic (ppm)

Analysis greater than 500 ppm Copper
Analysis greater than 300 ppm Arsenic



MAIN SHOWING ROCK GEOCHEMICAL COPPER ppm / ARSENIC ppm	
DRAWN BY M.FERGUSON	SCALE 1:500
DATE January 1989	MAP No. 9 B



GEOLOGICAL BRANCH
ASSESSMENT REPORT

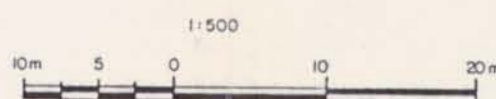
18,766

Part 2 of 2

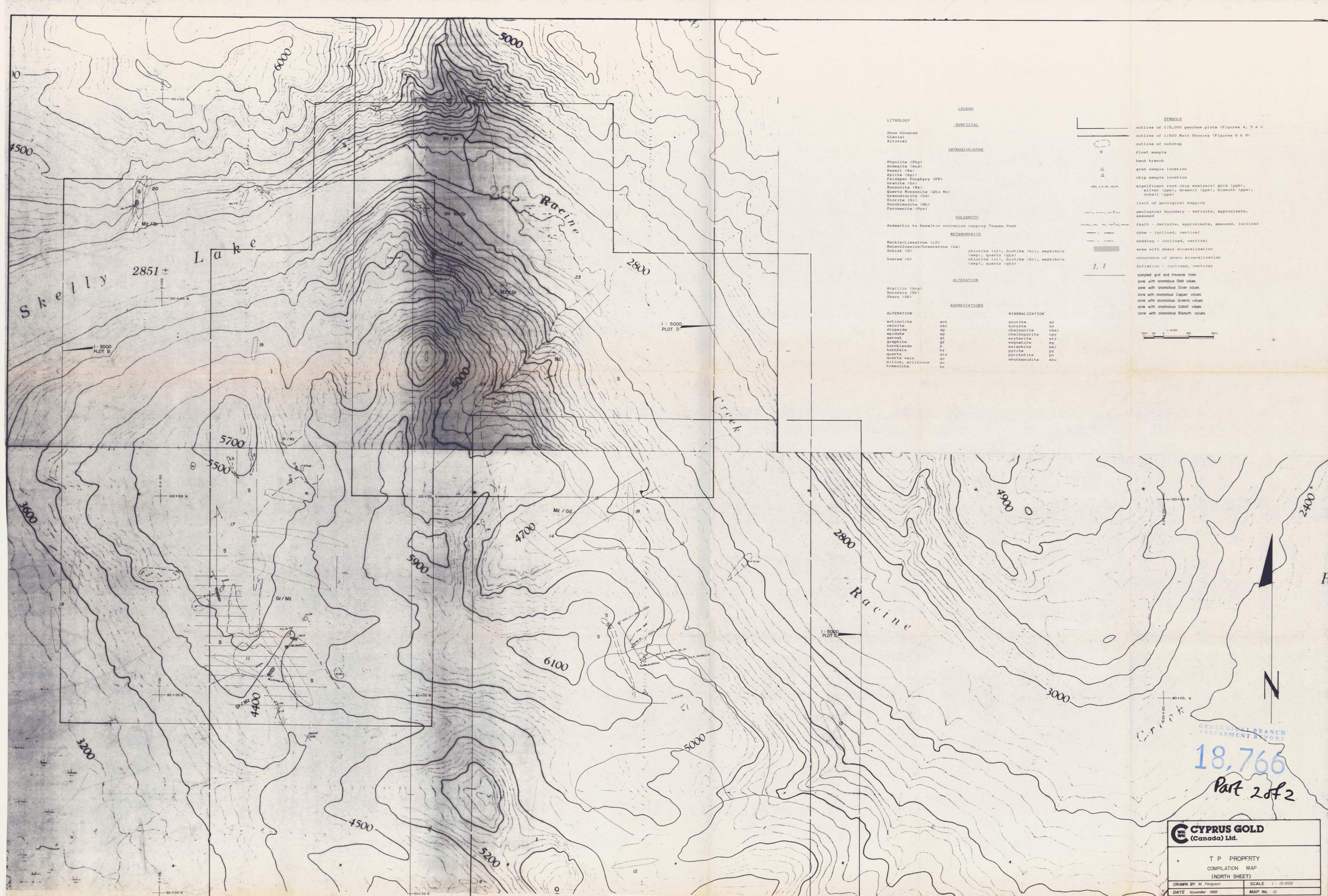
LEGEND

+ 10.0 Gold (ppb)
+ 1.3 Silver (ppm)

Analysis greater than 100 ppb Gold
Analysis greater than 2.0 ppm Silver



MAIN SHOWING ROCK GEOCHEMICAL GOLD ppb / SILVER ppm	
DRAWN BY M. Ferguson	SCALE 1:500
DATE January 1989	MAP No. 9 A



LEGEND

LITHOLOGY

Snow Covered
Glacial
Alluvial

SUBSIFICAL

INTRUSIVE/DYKE

Rhyolite (Rhy)
Andesite (And)
Basalt (Ba)
Apilite (Apl)
Feldspar Porphyry (FP)
Granite (Gr)
Monzonite (Mz)
Quartz Monzonite (Qtz Mz)
Granodiorite (Gd)
Diorite (Di)
Hornblende (Hb)
Pyroxenite (Pyx)

VOLCANICS

Andesitic to Basaltic volcanics capping Teepee Peak

METAMORPHICS

Marble/Limestone (LS)
Metavolcanics/Greenstone (Gs)
Schist (S)
Gneiss (G)

ALTERATION

Argillic (Arg)
Hornfels (HF)
Skarn (SK)

ABBREVIATIONS

act
cel
bor
diop
epi
garnet
gre
hornblende
hornfels
qtz
quartz vein
silice
silicious
tremolite

MINERALIZATION

az
bn
chal
chalcocite
cov
ery
mal
py
pyrrhotite
po
skutterudite
sku

SYMBOLS

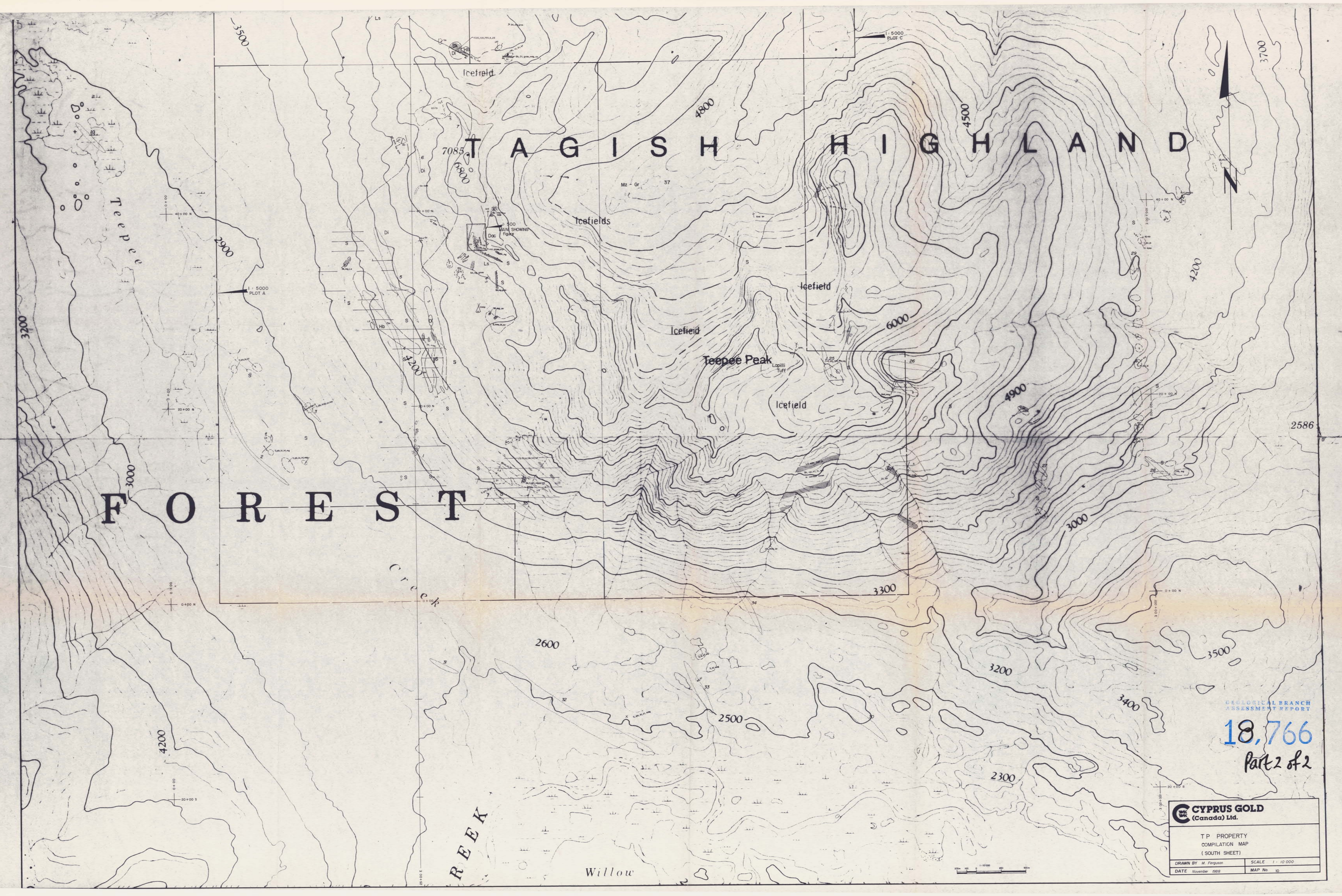
outline of 1:5,000 geochron plots (Figures 4, 5 & 6)
outline of 1:500 Main Showing (Figures 8 & 9)
outline of outcrop
float sample
hand trench
grab sample location
chip sample location
significant rock chip analysis: gold (ppb), silver (ppm), arsenic (ppm), bismuth (ppm), cobalt (ppm)
limit of geological mapping
geological boundary - definite, approximate, assumed
fault - definite, approximate, assumed, inclined
dyke - inclined, vertical
bedding - inclined, vertical
area with skarn mineralization
occurrence of skarn mineralization
foliation - inclined, vertical
sampled grid and traverse lines
zone with anomalous Gold values
zone with anomalous Silver values
zone with anomalous Arsenic values
zone with anomalous Cobalt values
zone with anomalous Bismuth values

18,766
Part 2 of 2

CYPRUS GOLD
(Canada) Ltd.

T P PROPERTY
COMPILATION MAP
(NORTH SHEET)

DRAWN BY M. Ferguson SCALE 1:10,000
DATE November 1992 MAP No. 10



T A G I S H H I G H L A N D

F O R E S T

REEK
Willow

GEOLOGICAL BRANCH
ASSESSMENT REPORT

18,766
Part 2 of 2

T P PROPERTY COMPILATION MAP (SOUTH SHEET)	
DRAWN BY M. Ferguson	SCALE 1 : 10 000
DATE November 1988	MAP No. 10