

ARIS SUMMARY SHEET

District Geologist, Prince George

Off Confidential: 90.04.19

ASSESSMENT REPORT 18794

MINING DIVISION: Cariboo

PROPERTY: Duck  
LOCATION: LAT 52 43 00 LONG 121 27 30  
UTM 10 5841650 604138  
NTS 093A11W

CAMP: 038 Cariboo - Barkerville Camp

CLAIM(S): Duck 4, Duck 8  
OPERATOR(S): Gibraltar Mines  
AUTHOR(S): Barker, G.E.  
REPORT YEAR: 1989, 23 Pages

COMMODITIES

SEARCHED FOR: Gold, Silver, Copper, Lead, Zinc

KEYWORDS: Hadrynian, Snowshoe Group, Gneisses, Phyllites, Pyrite

WORK

DONE: Geochemical  
SOIL 127 sample(s) ; AU, AG, CU, PB, ZN  
Map(s) - 6; Scale(s) - 1:5000

RELATED  
REPORTS: 17426

|             |     |
|-------------|-----|
| LOG NO: 050 | RD. |
| TION:       |     |
| FILE NO:    |     |

GEOCHEMICAL SOIL SURVEY REPORT  
ON THE  
DUCK 2 CLAIM GROUP  
Cariboo Mining Division 93 A 11W  
(Latitude 52° 41', Longitude 121° 31')  
OWNER: C.E. Carlson, Hixon, B.C.  
OPERATOR: Gibraltar Mines Limited,  
McLeese Lake, B.C.  
G.E. Barker April 10, 1989

FILMED

GEOLOGICAL BRANCH  
ASSESSMENT REPORT

18,794

GEOCHEMICAL SOIL SURVEY REPORT  
ON THE  
DUCK 2 CLAIM GROUP

Cariboo Mining Division  
93 A 11  
(Latitude 52° 41', Longitude 121° 31')

OWNER:  
C. E. Carlson  
P. O. Box 35  
Site 9, R.R.#1  
Hixon, B. C.  
V0K 1S0

OPERATOR:  
Gibraltar Mines Limited  
P. O. Box 130  
McLeese Lake, B. C.  
V0L 1P0

Author: G. E. Barker

Submitted: April 10, 1989

TABLE OF CONTENTS

1 INTRODUCTION . . . . . 1

2 MINERAL CLAIMS . . . . . 1

    2.1 DUCK 1 GROUP . . . . . 1

    2.2 DUCK 2 GROUP . . . . . 1

3 TOPOGRAPHY AND GEOLOGY . . . . . 1

4 SOIL SURVEY . . . . . 2

    4.1 Field Methods . . . . . 2

    4.2 Analytical Methods . . . . . 2

    4.3 Results and Interpretation . . . . . 3

5 STATEMENT OF EXPENDITURES . . . . . 3

6 CONCLUSIONS . . . . . 4

LIST OF FIGURES

Figure 1. Location Map (In Text)

Figure 2. Claim Map (In Text)

Figure 3. Sample Locations (In Pocket)

Figure 4. Cu Concentration (In Pocket)

Figure 5. Zn Concentration (In Pocket)

Figure 6. Pb Concentration (In Pocket)

Figure 7. Ag Concentration (In Pocket)

Figure 8. Au Concentration (In Pocket)

APPENDICES

APPENDIX A. Statement of Qualifications . . . . . 5

APPENDIX B. Assay Sheets

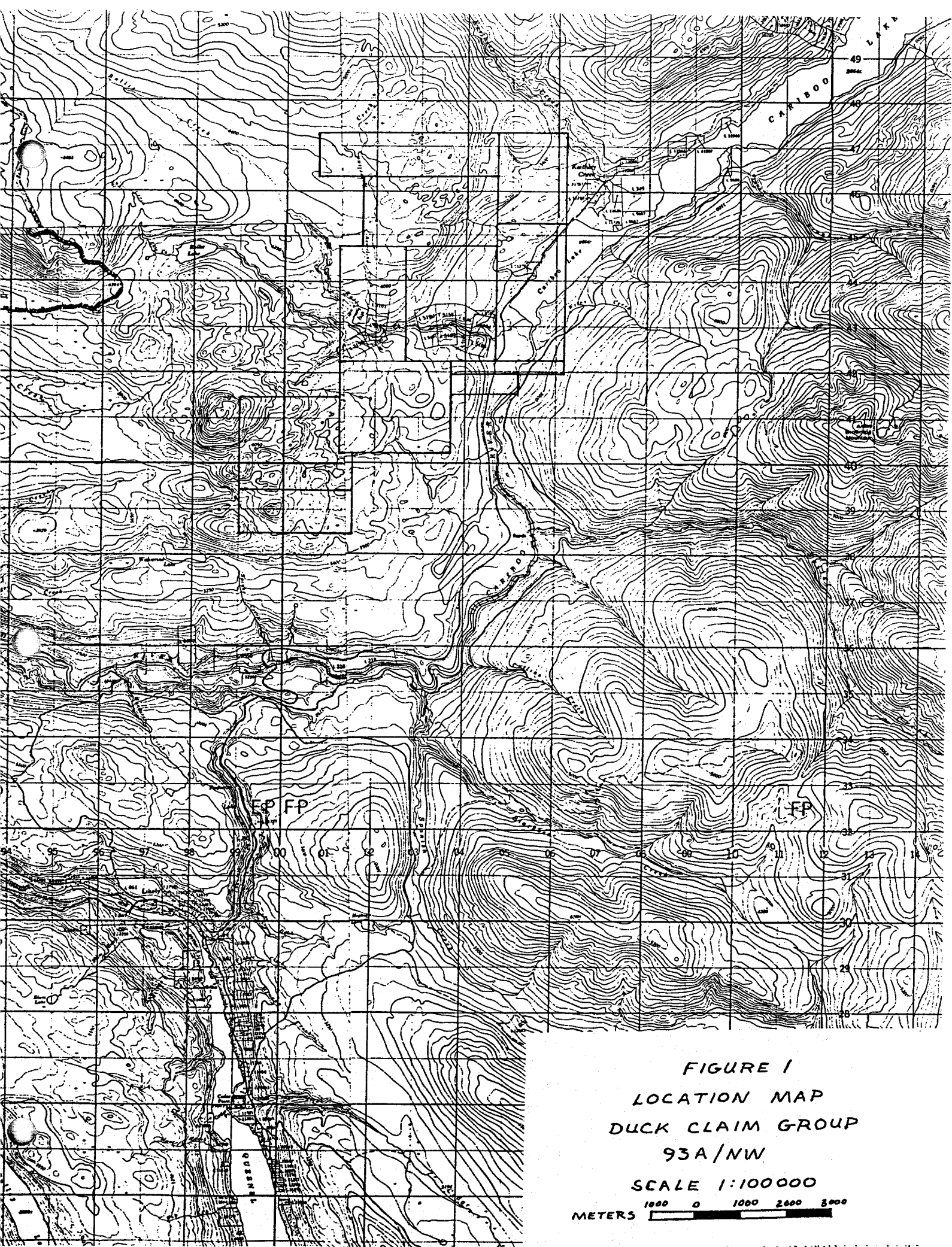
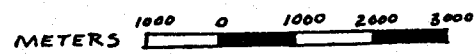


FIGURE 1  
LOCATION MAP  
DUCK CLAIM GROUP  
93A/NW

SCALE 1:100000



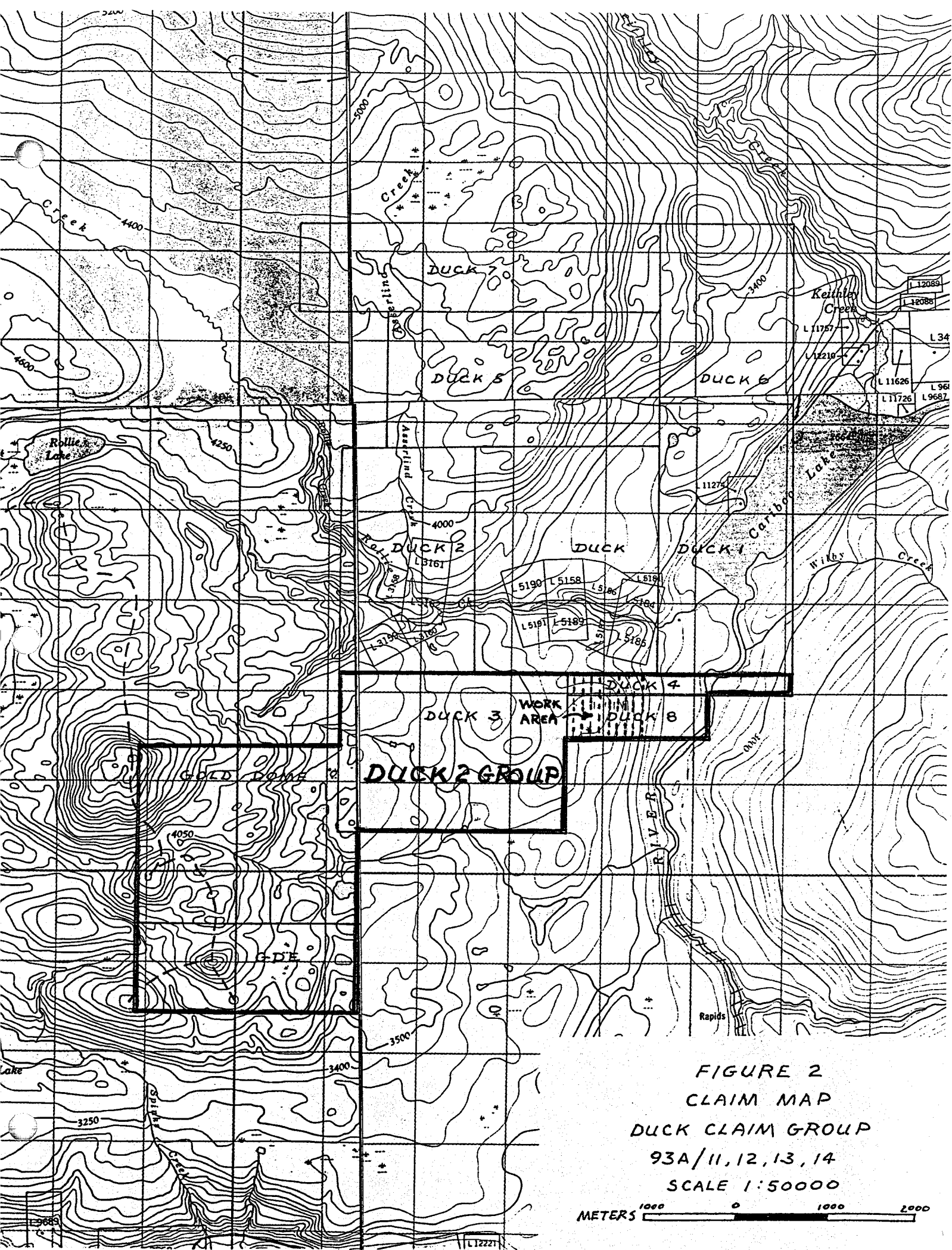


FIGURE 2  
 CLAIM MAP  
 DUCK CLAIM GROUP  
 93A/11,12,13,14  
 SCALE 1:50000



## 1 INTRODUCTION

The Duck Group is located about 1.5 km. southwest of Keithley Creek, B. C. The claims cover the lower portion of the Rollie and Asserlind Creek watersheds and also include the southwest end of Cariboo Lake. The nearest large settlement is Likely, B. C. which lies about 20 km. to the southwest. Access to the claims is via the Keithley Creek road. Access within the claim group is provided by a series of logging roads.

The Duck claims were staked in 1987 by C. E. Carlson to cover sulfide mineralization observed in a succession of sedimentary rocks considered to be part of the Hadrynian to Cambrian Snowshoe Group. This report covers a Geochemical soil survey carried out over the Duck 4 and Duck 8 mineral claims during the period June 20, 1988 to June 23, 1988. A total of 127 soil samples were collected.

## 2 MINERAL CLAIMS

The mineral claims of the Duck Property are shown in Figure 2 and claim information is tabulated below:

### 2.1 DUCK 1 GROUP

| <u>CLAIM NAME</u> | <u>RECORD NO.</u> | <u>NO. OF UNITS</u> | <u>DATE OF RECORD</u> |
|-------------------|-------------------|---------------------|-----------------------|
| DUCK              | 8334              | 20                  | MARCH 29, 1987        |
| DUCK 1            | 8335              | 18                  | MARCH 29, 1987        |
| DUCK 2            | 8365              | 15                  | APRIL 16, 1987        |
| DUCK 5            | 8566              | 18                  | AUGUST 14, 1987       |
| DUCK 6            | 8671              | 12                  | OCTOBER 1, 1987       |
| DUCK 7            | 8672              | 16                  | OCTOBER 1, 1987       |

### 2.2 DUCK 2 GROUP

| <u>CLAIM NAME</u> | <u>RECORD NO.</u> | <u>NO. OF UNITS</u> | <u>DATE OF RECORD</u> |
|-------------------|-------------------|---------------------|-----------------------|
| DUCK 3            | 8410              | 20                  | MAY 15, 1987          |
| DUCK 4            | 8507              | 5                   | JUNE 26, 1987         |
| GOLD DOME         | 8543              | 20                  | JULY 16, 1987         |
| GDE               | 8544              | 10                  | JULY 16, 1987         |
| DUCK 8            | 9132              | 3                   | MAY 6, 1988           |

The claims are all owned by C. E. Carlson but held under option by Gibraltar Mines Limited.

## 3 TOPOGRAPHY AND GEOLOGY

The geochemical survey was carried out over a gently undulating hilltop terrain in which topographic slopes usually do not exceed 10-degrees. Steeper slopes occur near the baseline where the ground dips northerly into a broad creek valley, but in general, the topographic relief is still moderate.

Geological relations within the grid area are not adequately known due to a lack of reliable bedrock exposure. Most of the area is covered by a relatively thin mantle of gravelly till, or ablation moraine. Huge glacial boulders occur throughout the area, and appear in most cases, to be of very local origin. These, and the few rock exposures available, indicate the western edge of the grid is underlain mainly by a coarse grained granitic gneiss, which, to the east, is in contact with an assemblage of sheared and crenulated grey-green phyllites. These phyllites appear in places, to be mineralized with abundant pyrite. Shearing and bedding in most cases appears to be relatively flat lying.

#### 4 SOIL SURVEY

##### 4.1 Field Methods

Soil samples were taken at 50 meter intervals along north trending lines spaced 100 meters apart. (See figures 3 to 8). The northern boundary line of the Duck 8 claim was used as a baseline. Survey control was by hip-chain and compass.

At each sample site, soils were collected in standard kraft bags and pertinent information recorded. Mainly B or C horizon samples were collected. Sample depths ranged between 6.0 and 20.0 cm. Each sample site was evaluated in regards to soil type, drainage conditions and soil parentage.

##### 4.2 Analytical Methods

All samples were analyzed at the Gibraltar Mines Assay Laboratory for copper, lead, zinc, and silver. The following procedure was followed:

1. Samples were oven dried and sieved to -20 mesh.
2. 5 g. of sample was weighed out and placed in a beaker.
3. 30 ml. of concentrated nitric acid containing 5% potassium chlorate was added.
4. The sample was digested under heat until all brown fumes disappeared.
5. 20 ml. of concentrated hydrochloric acid was then added and the sample further digested under heat for three minutes.
6. 25 ml of 1% aluminum chloride was added and the solution made up to 200 ml. with water, then filtered.
7. A 50 ml. sample was taken and copper, lead, zinc, and silver were determined using a Perkin-Elmer 3030 atomic absorption spectrometer.

All samples were analyzed at Vangeochem Laboratory in Vancouver, B.C. for gold. The following procedure was followed:

1. Samples were oven dried and sieved to -20 mesh.
2. 10 g. of sample was weighed out and digested in Aqua Regia.
3. The Aqua Regia solution was filtered.



4. Gold was extracted from the filtrate using a gold selective solvent.
5. Gold values in the solvent were determined using a Techtron AA5 atomic absorption spectrometer.

#### 4.3 Results and Interpretation

The distribution of copper, zinc, lead, silver and gold in soils is shown in Figures 4 to 8. Our experience in this district suggests the following threshold values for each of these elements: copper - 80 ppm, zinc - 160 ppm, lead - 60 ppm, silver - 2.5 ppm, gold - 20 ppb. On this basis there are no significant anomalies of any of the metals assayed, except for a few randomly distributed single-sample "highs". These highs do not appear to correlate with any given soil or rock type, although a few, found at the north end of lines 100E and 200E were located near the bottom of a drainage area.

### 5 STATEMENT OF EXPENDITURES

#### Geochemical Soil Survey - Duck 2 Group 1988

##### 1. Field Work

G. Barker

20, 21, 22, 23 June, 40 hrs. @ \$25.50/hr. \$1,020.00

E. Oliver

20, 21, 22, 23 June, 40 hrs. @ \$23.00/hr. 920.00

\$1,940.00

##### 2. Report Preparation

G. Barker

17, 18, 19 August, 1988 and 7 April, 1989

25 hrs. @ \$25.50/hr.

637.50

##### 3. Transportation Costs

1987 4x4 rental truck, 4 days @ \$36/day

144.00

Fuel

130.00

274.00

##### 4. Survey Supplies (topostrng, ribbon, bags, etc.)

55.00

##### 5. Assay Costs

127 samples assayed for Cu, Pb, Zn, Ag

Gibraltar Lab. @ \$7.00/sample

889.00

127 samples assayed for Au

Vangeochem Lab. @ \$5.50/sample

698.50

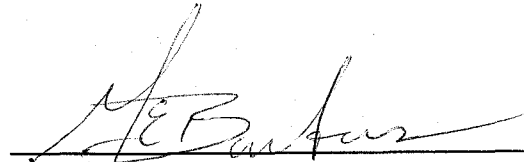
1587.50

TOTAL

\$4,494.00

## 6 CONCLUSIONS

This soil sampling project has not revealed the presence of any significant soil anomalies enriched in copper, zinc, lead, silver, or gold. Further soil sampling within the drainage areas around the existing grid should be undertaken.



G. E. Barker  
Exploration Geologist

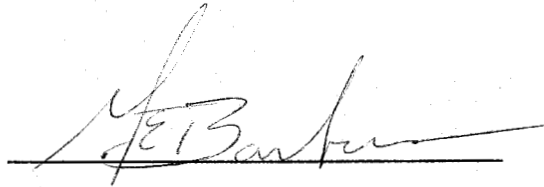
GIBRALTAR MINES LIMITED

## APPENDICES

## APPENDIX A. Statement of Qualifications

I, George E. Barker, of Gibraltar Mines Limited, McLeese Lake, British Columbia, do certify that:

1. I am a graduate of the University of Waterloo, Waterloo, Ontario, with a B.Sc. degree in General Science 1985.
2. From 1978 to the present I have been engaged in mining and exploration geology in British Columbia.
3. I personally participated in the field work and interpreted the results.

A handwritten signature in dark ink, appearing to read 'G. E. Barker', is written over a solid horizontal line. The signature is cursive and somewhat stylized.

G. E. Barker

APPENDIX B. Assay Sheets

GIBRALTAR MINES LIMITED  
**ASSAY CERTIFICATE**

Soil Samples  
Geology Exploration

Date June 29, 1988  
Zn Pb Ag

| Sample No. | % Ox. Cu. | Total Cu. | <del>% MoS<sub>2</sub></del> |       |         |         |
|------------|-----------|-----------|------------------------------|-------|---------|---------|
| 88-603     |           | 28 PPM    | 34 PPM                       | 8 PPM | .64 PPM |         |
| 04         |           | 25        | 55                           | 14    | .80     |         |
| 05         |           | 10        | 26                           | 8     | .64     |         |
| 06         |           | 23        | 106                          | 20    | 1.28    |         |
| 07         |           | 10        | 45                           | 16    | .96     |         |
| 08         |           | 8         | 38                           | 16    | .64     |         |
| 09         |           | 8         | 28                           | 12    | .56     |         |
| 10         |           | 23        | 59                           | 16    | 1.04    |         |
| 11         |           | 15        | 33                           | 8     | .72     |         |
| 12         |           | 5         | 22                           | 8     | .56     |         |
| 13         |           | 10        | 37                           | 16    | .80     | > Duct. |
| 14         |           | 18        | 52                           | 16    | .88     |         |
| 15         |           | 55        | 80                           | 36    | 3.04    |         |
| 16         |           | 13        | 50                           | 16    | .72     |         |
| 17         |           | 5         | 18                           | 8     | .48     |         |
| 18         |           | 20        | 80                           | 20    | 1.28    |         |
| 19         |           | 8         | 22                           | 8     | .64     |         |
| 20         |           | 13        | 42                           | 16    | .88     |         |
| 21         |           | 18        | 79                           | 12    | 1.36    |         |
| 22         |           | 23        | 64                           | 24    | 1.12    |         |
| 23         |           | 20        | 45                           | 12    | 1.04    |         |
| 24         |           | 15        | 55                           | 12    | 1.12    |         |
| 25         |           | 115       | 110                          | 32    | 1.44    |         |
| 26         |           | 8         | 30                           | 8     | .72     |         |
| 27         |           | 28        | 92                           | 20    | 1.12    |         |
| 28         |           | 48        | 326                          | 204   | 1.52    |         |
| 29         |           | 5         | 26                           | 8     | 1.28    |         |
| 30         |           | 30        | 55                           | 16    | .80     |         |

cc: Assay Lab.

DUCK 4+8

Assayer [Signature]

GIBRALTAR MINES LIMITED  
**ASSAY CERTIFICATE**

*Soil Samples*  
*Geology-Exploration*

Date *June 29*, 19*88*

*Zn*

*Pb*

*Ag*

| Sample No.    | % Ox. Cu. | Total Cu.     | % MOST         |                |                 |             |
|---------------|-----------|---------------|----------------|----------------|-----------------|-------------|
| <i>88-631</i> |           | <i>68 PPM</i> | <i>236 PPM</i> | <i>104 PPM</i> | <i>2.64 PPM</i> |             |
| <i>32</i>     |           | <i>45</i>     | <i>81</i>      | <i>20</i>      | <i>1.04</i>     |             |
| <i>33</i>     |           | <i>35</i>     | <i>89</i>      | <i>24</i>      | <i>1.28</i>     |             |
| <i>34</i>     |           | <i>38</i>     | <i>94</i>      | <i>20</i>      | <i>1.20</i>     |             |
| <i>35</i>     |           | <i>35</i>     | <i>138</i>     | <i>16</i>      | <i>1.76</i>     |             |
| <i>36</i>     |           | <i>55</i>     | <i>118</i>     | <i>20</i>      | <i>1.44</i>     |             |
| <i>37</i>     |           | <i>8</i>      | <i>95</i>      | <i>8</i>       | <i>.96</i>      |             |
| <i>38</i>     |           | <i>13</i>     | <i>58</i>      | <i>12</i>      | <i>1.04</i>     |             |
| <i>39</i>     |           | <i>13</i>     | <i>23</i>      | <i>8</i>       | <i>.40</i>      |             |
| <i>40</i>     |           | <i>48</i>     | <i>130</i>     | <i>32</i>      | <i>1.28</i>     |             |
| <i>41</i>     |           | <i>65</i>     | <i>149</i>     | <i>36</i>      | <i>1.28</i>     |             |
| <i>42</i>     |           | <i>30</i>     | <i>96</i>      | <i>36</i>      | <i>1.12</i>     | <i>Duck</i> |
| <i>43</i>     |           | <i>25</i>     | <i>136</i>     | <i>16</i>      | <i>.96</i>      |             |
| <i>44</i>     |           | <i>10</i>     | <i>50</i>      | <i>16</i>      | <i>.88</i>      |             |
| <i>45</i>     |           | <i>78</i>     | <i>89</i>      | <i>40</i>      | <i>.80</i>      |             |
| <i>46</i>     |           | <i>43</i>     | <i>85</i>      | <i>28</i>      | <i>1.04</i>     |             |
| <i>47</i>     |           | <i>43</i>     | <i>74</i>      | <i>20</i>      | <i>.80</i>      |             |
| <i>48</i>     |           | <i>30</i>     | <i>75</i>      | <i>16</i>      | <i>1.28</i>     |             |
| <i>49</i>     |           | <i>20</i>     | <i>120</i>     | <i>16</i>      | <i>1.36</i>     |             |
| <i>50</i>     |           | <i>30</i>     | <i>81</i>      | <i>32</i>      | <i>1.12</i>     |             |
| <i>51</i>     |           | <i>28</i>     | <i>47</i>      | <i>16</i>      | <i>.96</i>      |             |
| <i>52</i>     |           | <i>15</i>     | <i>54</i>      | <i>28</i>      | <i>.96</i>      |             |
| <i>53</i>     |           | <i>18</i>     | <i>65</i>      | <i>28</i>      | <i>1.12</i>     |             |
| <i>54</i>     |           | <i>25</i>     | <i>86</i>      | <i>20</i>      | <i>1.20</i>     |             |
| <i>55</i>     |           | <i>43</i>     | <i>50</i>      | <i>16</i>      | <i>.88</i>      |             |
| <i>56</i>     |           | <i>38</i>     | <i>54</i>      | <i>16</i>      | <i>1.20</i>     |             |
| <i>57</i>     |           | <i>65</i>     | <i>230</i>     | <i>60</i>      | <i>2.08</i>     |             |
| <i>58</i>     |           | <i>45</i>     | <i>132</i>     | <i>24</i>      | <i>1.52</i>     |             |

cc: Assay Lab.

*DUCK 4+8*

Assayer

*Shompson*

GIBRALTAR MINES LIMITED  
**ASSAY CERTIFICATE**

*Soil Samples*  
*Geology Exploration*

Date *June 29*, 19*88*  
*Pb* *Ag*

| Sample No.    | % Ox. Cu. | Total Cu.     | <del>% MOS<sub>2</sub></del> |               |             |                |
|---------------|-----------|---------------|------------------------------|---------------|-------------|----------------|
| <i>88-659</i> |           | <i>15 PPM</i> | <i>67 PPM</i>                | <i>12 PPM</i> | <i>2.24</i> | <i>.72 PPM</i> |
| <i>60</i>     |           | <i>55</i>     | <i>71</i>                    | <i>36</i>     | <i>1.12</i> |                |
| <i>61</i>     |           | <i>30</i>     | <i>136</i>                   | <i>28</i>     | <i>1.12</i> |                |
| <i>62</i>     |           | <i>15</i>     | <i>63</i>                    | <i>24</i>     | <i>1.04</i> |                |
| <i>63</i>     |           | <i>18</i>     | <i>40</i>                    | <i>16</i>     | <i>4.96</i> |                |
| <i>64</i>     |           | <i>140</i>    | <i>179</i>                   | <i>52</i>     | <i>1.36</i> |                |
| <i>65</i>     |           | <i>50</i>     | <i>115</i>                   | <i>36</i>     | <i>1.04</i> |                |
| <i>66</i>     |           | <i>40</i>     | <i>98</i>                    | <i>24</i>     | <i>1.20</i> |                |
| <i>67</i>     |           | <i>73</i>     | <i>122</i>                   | <i>28</i>     | <i>1.12</i> |                |
| <i>68</i>     |           | <i>40</i>     | <i>80</i>                    | <i>20</i>     | <i>1.84</i> |                |
| <i>69</i>     |           | <i>23</i>     | <i>85</i>                    | <i>24</i>     | <i>1.36</i> | <i>Duck</i>    |
| <i>70</i>     |           | <i>38</i>     | <i>87</i>                    | <i>24</i>     | <i>1.28</i> |                |
| <i>71</i>     |           | <i>18</i>     | <i>63</i>                    | <i>24</i>     | <i>1.28</i> |                |
| <i>72</i>     |           | <i>15</i>     | <i>84</i>                    | <i>36</i>     | <i>1.52</i> |                |
| <i>73</i>     |           | <i>15</i>     | <i>128</i>                   | <i>56</i>     | <i>.96</i>  |                |
| <i>74</i>     |           | <i>10</i>     | <i>49</i>                    | <i>20</i>     | <i>1.28</i> |                |
| <i>75</i>     |           | <i>18</i>     | <i>62</i>                    | <i>24</i>     | <i>1.12</i> |                |
| <i>76</i>     |           | <i>13</i>     | <i>42</i>                    | <i>16</i>     | <i>1.20</i> |                |
| <i>77</i>     |           | <i>20</i>     | <i>70</i>                    | <i>16</i>     | <i>1.36</i> |                |
| <i>78</i>     |           | <i>25</i>     | <i>76</i>                    | <i>20</i>     | <i>1.04</i> |                |
| <i>79</i>     |           | <i>20</i>     | <i>69</i>                    | <i>20</i>     | <i>.80</i>  |                |
| <i>80</i>     |           | <i>15</i>     | <i>76</i>                    | <i>16</i>     | <i>1.56</i> |                |
| <i>81</i>     |           | <i>8</i>      | <i>30</i>                    | <i>8</i>      | <i>.80</i>  |                |
| <i>82</i>     |           | <i>25</i>     | <i>88</i>                    | <i>20</i>     | <i>.80</i>  |                |
| <i>83</i>     |           | <i>13</i>     | <i>49</i>                    | <i>28</i>     | <i>1.76</i> |                |
| <i>84</i>     |           | <i>125</i>    | <i>75</i>                    | <i>64</i>     | <i>.48</i>  |                |
| <i>85</i>     |           | <i>8</i>      | <i>42</i>                    | <i>8</i>      | <i>1.72</i> |                |
| <i>86</i>     |           | <i>33</i>     | <i>82</i>                    | <i>32</i>     |             |                |

cc: Assay Lab.

*Duck 4+8*

Assayer *[Signature]*

**ASSAY CERTIFICATE**

*Soil Samples*  
*Geology-Exploration*

Date *June 30*, 19*88*

*Zn*

*Pb*

*Ag*

| Sample No.     | % Ox. Cu. | Total Cu.    | % <del>MOS</del> |               |                 |             |
|----------------|-----------|--------------|------------------|---------------|-----------------|-------------|
| <i>88-687</i>  |           | <i>8 ppm</i> | <i>31 ppm</i>    | <i>24 ppm</i> | <i>1.12 ppm</i> |             |
| <i>88</i>      |           | <i>18</i>    | <i>58</i>        | <i>28</i>     | <i>1.20</i>     |             |
| <i>89</i>      |           | <i>15</i>    | <i>55</i>        | <i>32</i>     | <i>1.68</i>     |             |
| <i>90</i>      |           | <i>88</i>    | <i>102</i>       | <i>36</i>     | <i>1.28</i>     |             |
| <i>91</i>      |           | <i>23</i>    | <i>55</i>        | <i>28</i>     | <i>.72</i>      |             |
| <i>92</i>      |           | <i>15</i>    | <i>67</i>        | <i>28</i>     | <i>1.20</i>     | <i>Duck</i> |
| <i>93</i>      |           | <i>30</i>    | <i>70</i>        | <i>24</i>     | <i>1.12</i>     |             |
| <i>94</i>      |           | <i>15</i>    | <i>47</i>        | <i>20</i>     | <i>.96</i>      |             |
| <i>95</i>      |           | <i>3</i>     | <i>27</i>        | <i>8</i>      | <i>.88</i>      |             |
| <i>96</i>      |           | <i>35</i>    | <i>61</i>        | <i>16</i>     | <i>.96</i>      |             |
| <i>97</i>      |           | <i>55</i>    | <i>55</i>        | <i>20</i>     | <i>.88</i>      |             |
| <i>98</i>      |           | <i>20</i>    | <i>57</i>        | <i>20</i>     | <i>1.04</i>     |             |
| <i>99</i>      |           | <i>30</i>    | <i>68</i>        | <i>16</i>     | <i>1.04</i>     |             |
| <i>88-1000</i> |           | <i>25</i>    | <i>60</i>        | <i>20</i>     | <i>1.44</i>     |             |
| <i>01</i>      |           | <i>33</i>    | <i>145</i>       | <i>20</i>     | <i>1.84</i>     |             |
| <i>02</i>      |           | <i>25</i>    | <i>24</i>        | <i>12</i>     | <i>.88</i>      |             |
| <i>03</i>      |           | <i>38</i>    | <i>51</i>        | <i>16</i>     | <i>1.20</i>     |             |
| <i>04</i>      |           | <i>23</i>    | <i>58</i>        | <i>20</i>     | <i>1.20</i>     |             |
| <i>05</i>      |           | <i>23</i>    | <i>108</i>       | <i>20</i>     | <i>1.68</i>     |             |
| <i>06</i>      |           | <i>23</i>    | <i>62</i>        | <i>20</i>     | <i>1.68</i>     | <i>Duck</i> |
| <i>07</i>      |           | <i>73</i>    | <i>108</i>       | <i>24</i>     | <i>2.08</i>     |             |
| <i>08</i>      |           | <i>25</i>    | <i>125</i>       | <i>16</i>     | <i>2.16</i>     |             |
| <i>09</i>      |           | <i>20</i>    | <i>44</i>        | <i>24</i>     | <i>.96</i>      |             |
| <i>10</i>      |           | <i>35</i>    | <i>69</i>        | <i>24</i>     | <i>.96</i>      |             |
| <i>11</i>      |           | <i>23</i>    | <i>59</i>        | <i>12</i>     | <i>.80</i>      |             |
| <i>12</i>      |           | <i>4</i>     | <i>46</i>        | <i>8</i>      | <i>.72</i>      |             |
| <i>13</i>      |           | <i>8</i>     | <i>33</i>        | <i>8</i>      | <i>.80</i>      |             |
| <i>14</i>      |           | <i>85</i>    | <i>162</i>       | <i>76</i>     | <i>1.20</i>     |             |

cc: Assay Lab.

*Duck 478*

*Thompson*  
Assayer .....



GIBRALTAR MINES LIMITED  
**ASSAY CERTIFICATE**

*Soil Samples*  
*Geology Exploration*

Date *June 30*, 19*88*  
*Pb* *Ag*

| Sample No. | % Ox. Cu. | Total Cu. | <del>% MoS<sub>2</sub></del> |        |          |        |
|------------|-----------|-----------|------------------------------|--------|----------|--------|
| 88- 1015   |           | 155 PPM   | 182 PPM                      | 52 PPM | 1.20 PPM |        |
| 16         |           | 20        | 25                           | 20     | 1.20     |        |
| 17         |           | 65        | 80                           | 32     | 1.20     |        |
| 18         |           | 55        | 68                           | 28     | 1.12     |        |
| 19         |           | 15        | 51                           | 24     | 1.36     |        |
| 20         |           | 63        | 130                          | 40     | 1.44     |        |
| 21         |           | 13        | 65                           | 4      | .96      |        |
| 22         |           | 58        | 70                           | 24     | 1.20     |        |
| 23         |           | 55        | 72                           | 16     | .96      |        |
| 24         |           | 10        | 58                           | 8      | .96      |        |
| 25         |           | 15        | 40                           | 8      | .88      |        |
| 26         |           | 20        | 54                           | 12     | 1.12     | > Duck |
| 27         |           | 60        | 130                          | 76     | .96      |        |
| 28         |           | 25        | 74                           | 44     | 1.28     |        |
| 29         |           | 23        | 71                           | 20     | 1.28     |        |
| 30         |           | 30        | 66                           | 24     | 1.20     |        |
| 31         |           | 40        | 114                          | 32     | 1.44     |        |
| 32         |           | 20        | 54                           | 16     | .96      |        |
| 33         |           | 43        | 78                           | 28     | 1.20     |        |
| 34         |           | 18        | 61                           | 28     | 1.12     |        |
| 35         |           | 35        | 82                           | 16     | .96      |        |
| 36         |           | 33        | 68                           | 32     | .88      |        |
| 37         |           | 25        | 56                           | 28     | 1.12     |        |
| 38         |           | 8         | 26                           | 16     | .64      |        |
| 39         |           | 33        | 80                           | 24     | .72      |        |
| 40         |           | 35        | 157                          | 44     | 1.20     |        |
| 41         |           | 20        | 64                           | 20     | .88      |        |
| 42         |           | 58        | 131                          | 40     | 1.36     |        |
|            |           |           |                              |        |          |        |
|            |           |           |                              |        |          |        |
|            |           |           |                              |        |          |        |
|            |           |           |                              |        |          |        |

cc: Assay Lab.

Duck 4+8

Assayer *Thompson*

GIBRALTAR MINES LIMITED  
**ASSAY CERTIFICATE**

Soil Samples  
Geology Exploration

Date June 30, 1988  
Zn Pb Ag

| Sample No. | % Ox. Cu. | Total Cu. | % MoS <sub>2</sub> |        |         |        |
|------------|-----------|-----------|--------------------|--------|---------|--------|
| 88 - 1043  |           | 43 PPM    | 160 PPM            | 80 PPM | 188 PPM |        |
| 44         |           | 15        | 54                 | 28     | 80      |        |
| 45         |           | 23        | 62                 | 24     | 88      |        |
| 46         |           | 45        | 61                 | 32     | 196     |        |
| 47         |           | 15        | 42                 | 20     | 64      |        |
| 48         |           | 28        | 66                 | 20     | 88      |        |
| 49         |           | 28        | 80                 | 28     | 104     |        |
| 50         |           | 10        | 74                 | 16     | 104     |        |
| 51         |           | 55        | 67                 | 28     | 112     |        |
| 52         |           | 13        | 37                 | 28     | 80      |        |
| 53         |           | 18        | 46                 | 20     | 196     |        |
| 54         |           | 28        | 70                 | 20     | 88      | > Duck |
| 55         |           | 5         | 26                 | 12     | 56      |        |
| 56         |           | 65        | 110                | 32     | 128     |        |
| 57         |           | 28        | 105                | 24     | 120     |        |
| 58         |           | 10        | 40                 | 24     | 80      |        |
| 59         |           | 43        | 90                 | 24     | 120     |        |
| 60         |           | 10        | 36                 | 16     | 64      |        |
| 61         |           | 18        | 95                 | 28     | 120     |        |
| 62         |           | 48        | 86                 | 44     | 112     |        |
| 63         |           | 28        | 56                 | 20     | 112     |        |
| 64         |           | 38        | 89                 | 24     | 128     |        |
| 65         |           | 55        | 85                 | 32     | 112     |        |
| 66         |           | 8         | 50                 | 16     | 120     |        |
| 67         |           | 15        | 74                 | 20     | 120     |        |
| 68         |           | 23        | 68                 | 16     | 112     |        |
| 69         |           | 4         | 20                 | 4      | 56      |        |
| 70         |           | 13        | 65                 | 12     | 112     |        |
| 71         |           | 13        | 49                 | 12     | 72      |        |
|            |           |           |                    |        |         |        |
|            |           |           |                    |        |         |        |
|            |           |           |                    |        |         |        |
|            |           |           |                    |        |         |        |

cc: Assay Lab.

Duck 4+8

Assayer Thompson



# VANGEOCHEM LAB LIMITED

MAIN OFFICE AND LABORATORY  
1988 Triumph Street  
Vancouver, B.C. V5L 1K5  
(604)251-5656 FAX:254-5717

BRANCH OFFICE  
1630 PANDORA ST.  
VANCOUVER, B.C. V5L 1L6  
(604) 251-5656

REPORT NUMBER: 880862 6A

JOB NUMBER: 880862

GIBRALTAR MINES LTD.

PAGE 2 OF 13

SAMPLE #

Au  
ppb

88 - 569 5  
88 - 570 10  
88 - 571 5  
88 - 572 5  
88 - 573 10

88 - 574 5  
88 - 575 5  
88 - 576 nd  
88 - 577 nd  
88 - 578 nd

88 - 579 10  
88 - 580 nd  
88 - 581 5  
88 - 582 nd  
88 - 583 nd

88 - 584 10  
88 - 585 10  
88 - 586 10  
88 - 587 15  
88 - 588 5

88 - 589 nd  
88 - 590 5  
88 - 591 15  
88 - 592 30  
88 - 593 nd

88 - 594 5  
88 - 595 15  
88 - 596 20  
88 - 597 15  
88 - 598 15

88 - 599 5  
88 - 600 60  
88 - 601 10  
88 - 602 10

88 - 603 nd

88 - 604 5  
88 - 605 5  
88 - 606 15  
88 - 607 nd

DETECTION LIMIT

5

nd = none detected

-- = not analysed

is = insufficient sample

*Duck 1*

*Duck 2 group*



# VANGEOCHEM LAB LIMITED

MAIN OFFICE AND LABORATORY  
1988 Triumph Street  
Vancouver, B.C. V5L 1K5  
(604) 251-5656 FAX: 254-5717

BRANCH OFFICE  
1630 PANDORA ST.  
VANCOUVER, B.C. V5L 1L6  
(604) 251-5656

REPORT NUMBER: 880862 GA

JOB NUMBER: 880862

GIBRALTAR MINES LTD.

PAGE 3 OF 13

| SAMPLE # | Au<br>ppb |
|----------|-----------|
| 88 - 608 | 5         |
| 88 - 609 | nd        |
| 88 - 610 | 10        |
| 88 - 611 | 25        |
| 88 - 612 | nd        |
| 88 - 613 | 10        |
| 88 - 614 | 5         |
| 88 - 615 | 15        |
| 88 - 616 | 20        |
| 88 - 617 | 5         |
| 88 - 618 | 15        |
| 88 - 619 | nd        |
| 88 - 620 | nd        |
| 88 - 621 | 15        |
| 88 - 622 | 15        |
| 88 - 623 | nd        |
| 88 - 624 | 5         |
| 88 - 625 | 10        |
| 88 - 626 | 5         |
| 88 - 627 | 10        |
| 88 - 628 | 10        |
| 88 - 629 | nd        |
| 88 - 630 | 5         |
| 88 - 631 | 5         |
| 88 - 632 | 20        |
| 88 - 633 | 10        |
| 88 - 634 | 5         |
| 88 - 635 | 5         |
| 88 - 636 | 20        |
| 88 - 637 | 5         |
| 88 - 638 | nd        |
| 88 - 639 | 10        |
| 88 - 640 | 15        |
| 88 - 641 | nd        |
| 88 - 642 | 15        |
| 88 - 643 | 10        |
| 88 - 644 | nd        |
| 88 - 645 | 10        |
| 88 - 646 | 5         |

*Duck 2 group*

DETECTION LIMIT

5

nd = none detected

-- = not analysed

is = insufficient sample



# VANGEOCHEM LAB LIMITED

MAIN OFFICE AND LABORATORY  
1988 Triumph Street  
Vancouver, B.C. V5L 1K5 B  
(604)251-5656 FAX:254-5717

BRANCH OFFICE  
1630 PANDORA ST.  
VANCOUVER, B.C. V5L 1L6  
(604) 251-5656

REPORT NUMBER: 880862 GA

JOB NUMBER: 880862

GIBRALTAR MINES LTD.

PAGE 4 OF 13

| SAMPLE # | Au<br>ppb |
|----------|-----------|
| 88 - 647 | 5         |
| 88 - 648 | nd        |
| 88 - 649 | 5         |
| 88 - 650 | 10        |
| 88 - 651 | nd        |
| 88 - 652 | nd        |
| 88 - 653 | 5         |
| 88 - 654 | 10        |
| 88 - 655 | 10        |
| 88 - 656 | 5         |
| 88 - 657 | 10        |
| 88 - 658 | 15        |
| 88 - 659 | 10        |
| 88 - 660 | 15        |
| 88 - 661 | 15        |
| 88 - 662 | 5         |
| 88 - 663 | 10        |
| 88 - 664 | 15        |
| 88 - 665 | 5         |
| 88 - 666 | 10        |
| 88 - 667 | 5         |
| 88 - 668 | 5         |
| 88 - 669 | 5         |
| 88 - 670 | 15        |
| 88 - 671 | 20        |
| 88 - 672 | 10        |
| 88 - 673 | 10        |
| 88 - 674 | 5         |
| 88 - 675 | 20        |
| 88 - 676 | 20        |
| 88 - 677 | 15        |
| 88 - 678 | 15        |
| 88 - 679 | nd        |
| 88 - 680 | 10        |
| 88 - 681 | 5         |
| 88 - 682 | 10        |
| 88 - 683 | 10        |
| 88 - 684 | 10        |
| 88 - 685 | nd        |

*Duck 2 group*

DETECTION LIMIT

5

nd = none detected

-- = not analysed

is = insufficient sample



# VANGEOCHEM LAB LIMITED

MAIN OFFICE AND LABORATORY  
1988 Triumph Street  
Vancouver, B.C. V5L 1K5  
(604)251-5656 FAX:254-5717

BRANCH OFFICE  
1630 PANDORA ST.  
VANCOUVER, B.C. V5L 1L6  
(604) 251-5656

REPORT NUMBER: 880862 GA

JOB NUMBER: 880862

GIBRALTAR MINES LTD.

PAGE 5 OF 13

| SAMPLE #  | Au<br>ppb |
|-----------|-----------|
| 88 - 686  | 5         |
| 88 - 687  | 10        |
| 88 - 688  | 55        |
| 88 - 689  | 5         |
| 88 - 690  | 5         |
| 88 - 691  | nd        |
| 88 - 692  | 5         |
| 88 - 693  | nd        |
| 88 - 694  | 5         |
| 88 - 695  | nd        |
| 88 - 696  | 5         |
| 88 - 697  | 5         |
| 88 - 698  | 10        |
| 88 - 699  | 25        |
| 88 - 1000 | 5         |
| 88 - 1001 | 10        |
| 88 - 1002 | nd        |
| 88 - 1003 | nd        |
| 88 - 1004 | nd        |
| 88 - 1005 | 5         |
| 88 - 1006 | 5         |
| 88 - 1007 | 5         |
| 88 - 1008 | 5         |
| 88 - 1009 | 5         |
| 88 - 1010 | 5         |
| 88 - 1011 | 10        |
| 88 - 1012 | nd        |
| 88 - 1013 | nd        |
| 88 - 1014 | 30        |
| 88 - 1015 | 5         |
| 88 - 1016 | 15        |
| 88 - 1017 | 5         |
| 88 - 1018 | 25        |
| 88 - 1019 | 5         |
| 88 - 1020 | 20        |
| 88 - 1021 | 10        |
| 88 - 1022 | 10        |
| 88 - 1023 | nd        |
| 88 - 1024 | nd        |

*Duck 2 group*

DETECTION LIMIT

5

nd = none detected

-- = not analysed

is = insufficient sample



# VANGEOCHEM LAB LIMITED

MAIN OFFICE AND LABORATORY  
1988 Triumph Street  
Vancouver, B.C. V5L 1K5  
(604)251-5656 FAX:254-5717

BRANCH OFFICE  
1630 PANDORA ST.  
VANCOUVER, B.C. V5L 1L6  
(604) 251-5656

REPORT NUMBER: 880862 GA

JOB NUMBER: 880862

GIBRALTAR MINES LTD.

PAGE 6 OF 13

| SAMPLE #        | Au<br>ppb |
|-----------------|-----------|
| 88 - 1025       | nd        |
| 88 - 1026       | 10        |
| 88 - 1027       | 10        |
| 88 - 1028       | 5         |
| 88 - 1029       | 5         |
| 88 - 1030       | 10        |
| 88 - 1031       | 15        |
| 88 - 1032       | 5         |
| 88 - 1033       | 10        |
| 88 - 1034       | nd        |
| 88 - 1035       | 5         |
| 88 - 1036       | 10        |
| 88 - 1037       | 15        |
| 88 - 1038       | 5         |
| 88 - 1039       | 15        |
| 88 - 1040       | 20        |
| 88 - 1041       | 10        |
| 88 - 1042       | 20        |
| 88 - 1043       | 10        |
| 88 - 1044       | 5         |
| 88 - 1045       | 10        |
| 88 - 1046       | nd        |
| 88 - 1047       | 20        |
| 88 - 1048       | 25        |
| 88 - 1049       | 5         |
| 88 - 1050       | 10        |
| 88 - 1051       | 10        |
| 88 - 1052       | 10        |
| 88 - 1053       | nd        |
| 88 - 1054       | 5         |
| 88 - 1055       | 10        |
| 88 - 1056       | 10        |
| 88 - 1057       | 10        |
| 88 - 1058       | 10        |
| 88 - 1059       | 10        |
| 88 - 1060       | nd        |
| 88 - 1061       | 5         |
| 88 - 1062       | nd        |
| 88 - 1063       | nd        |
| DETECTION LIMIT | 5         |

*check 2 group*

nd = none detected

-- = not analysed

is = insufficient sample



# VANGEOCHEM LAB LIMITED

MAIN OFFICE AND LABORATORY  
1988 Triumph Street  
Vancouver, B.C. V5L 1K5  
(604) 251-5656 FAX: 254-5717

BRANCH OFFICE  
1630 PANDORA ST.  
VANCOUVER, B.C. V5L 1L6  
(604) 251-5656

REPORT NUMBER: 880862 GA

JOB NUMBER: 880862

GIBRALTAR MINES LTD.

PAGE 7 OF 13

| SAMPLE #  | Au<br>ppb |
|-----------|-----------|
| 88 - 1064 | nd        |
| 88 - 1065 | 10        |
| 88 - 1066 | 5         |
| 88 - 1067 | 5         |
| 88 - 1068 | 15        |
| 88 - 1069 | nd        |
| 88 - 1070 | nd        |
| 88 - 1071 | 5         |
| 88 - 1072 | nd        |
| 88 - 1073 | nd        |
| 88 - 1074 | 5         |
| 88 - 1075 | nd        |
| 88 - 1076 | 10        |
| 88 - 1077 | 10        |
| 88 - 1078 | 5         |
| 88 - 1079 | nd        |
| 88 - 1080 | 10        |
| 88 - 1081 | 15        |
| 88 - 1082 | 10        |
| 88 - 1083 | 20        |
| 88 - 1084 | 10        |
| 88 - 1085 | 10        |
| 88 - 1086 | 20        |
| 88 - 1087 | 10        |
| 88 - 1088 | 30        |
| 88 - 1089 | 20        |
| 88 - 1090 | 10        |
| 88 - 1091 | 10        |
| 88 - 1092 | 5         |
| 88 - 1093 | 15        |
| 88 - 1094 | 10        |
| 88 - 1095 | 5         |
| 88 - 1096 | 10        |
| 88 - 1097 | nd        |
| 88 - 1098 | nd        |
| 88 - 1099 | 5         |
| 88 - 1100 | 10        |
| 88 - 1101 | 10        |
| 88 - 1102 | 10        |

*Dual 2 group*

*Frants Cr.  
8400-D Rd.*

DETECTION LIMIT

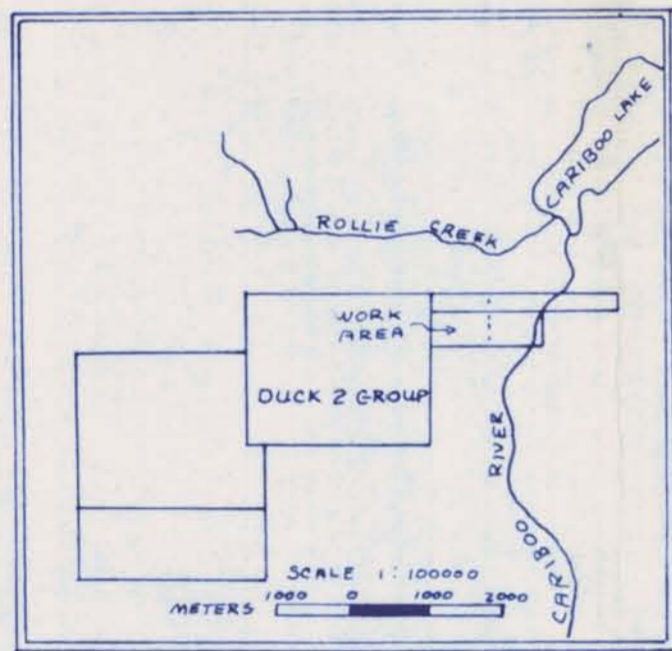
5

nd = none detected

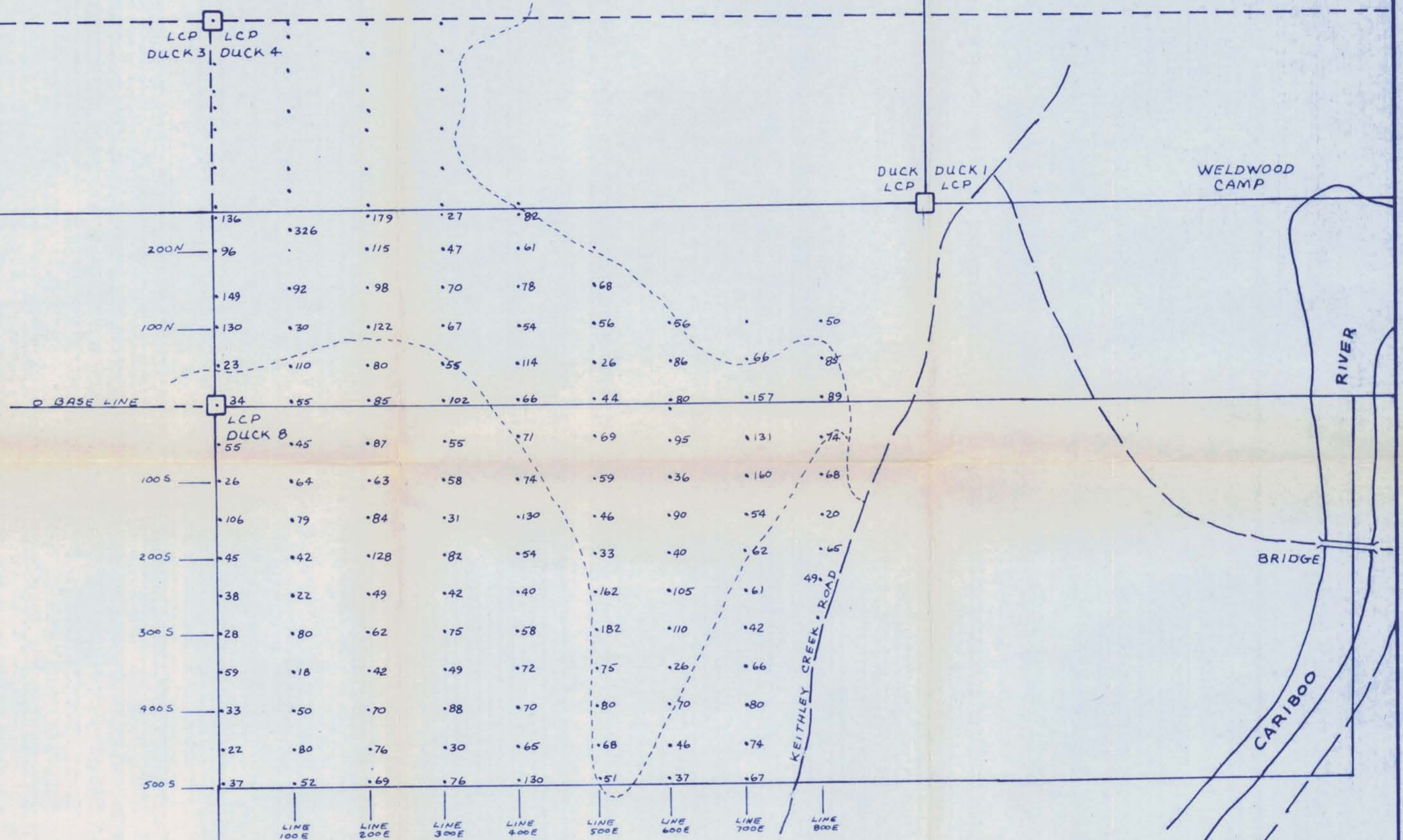
-- = not analysed

is = insufficient sample



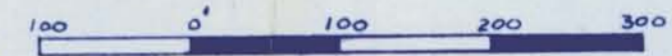


INDEX MAP



GEOLOGICAL BRANCH  
ASSESSMENT REPORT

18,794 METERS

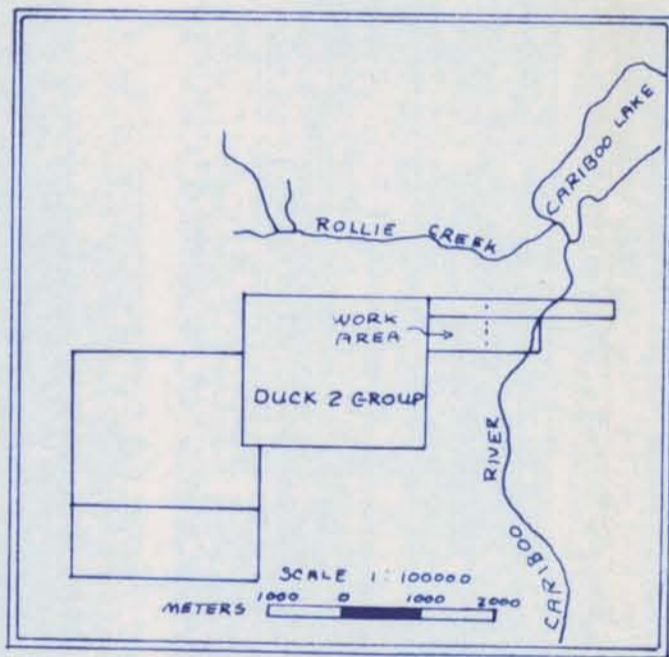


NOTE: CONTROL BY CHAIN AND COMPASS

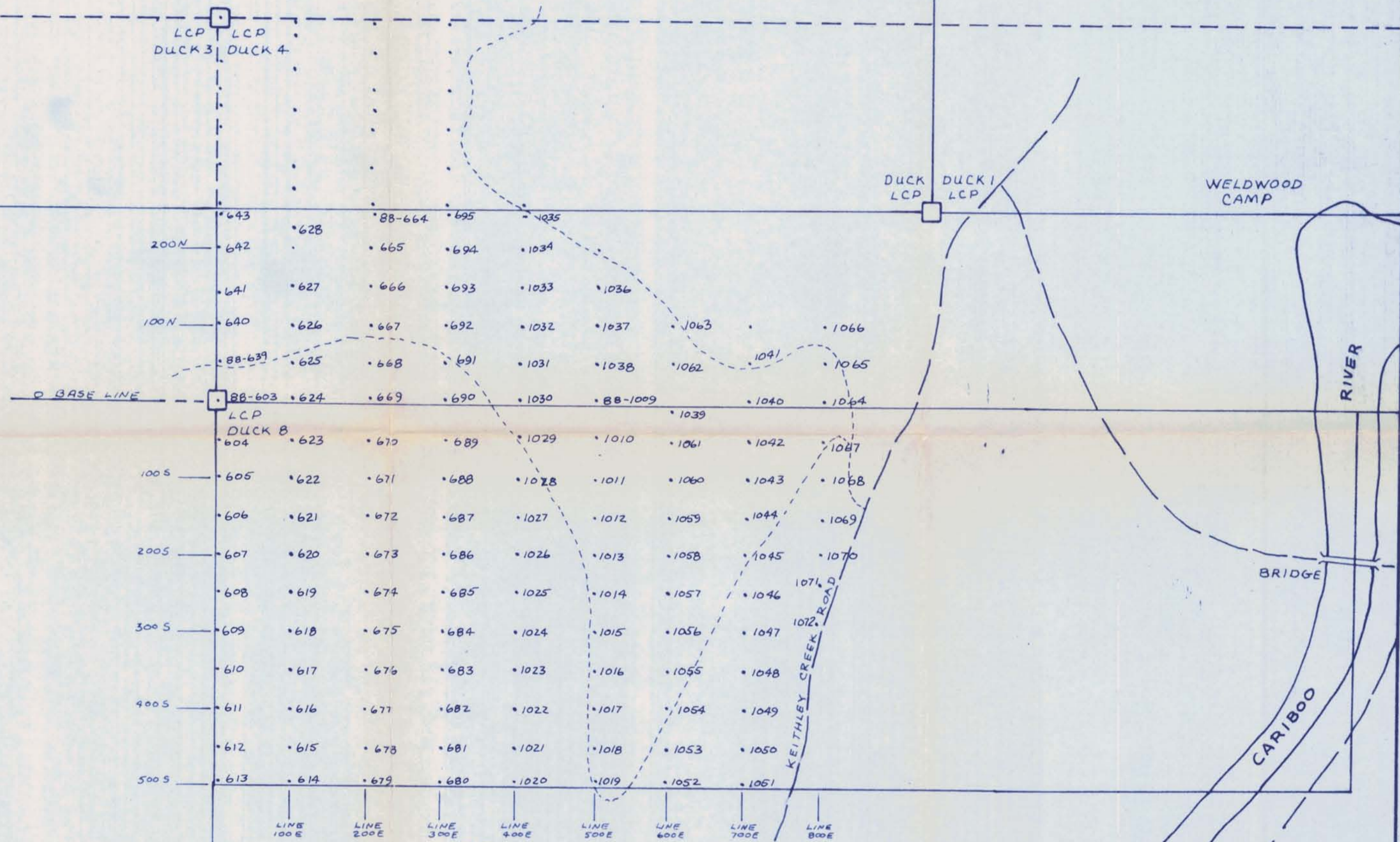
| DWN. | CHECK | APPR. | ISSUED FOR | DATE | REV. | DESCRIPTION | SCALE 1:5000 | No. | DWG. No.    |
|------|-------|-------|------------|------|------|-------------|--------------|-----|-------------|
|      |       |       |            |      |      |             |              |     | AUGUST 1988 |

|                                                                          |                        |
|--------------------------------------------------------------------------|------------------------|
| GIBRALTAR MINES LIMITED<br>GEOCHEMICAL SOIL SURVEY<br>DUCK 2 CLAIM GROUP | ZINC CONCENTRATION PPM |
|                                                                          | FILE No. FIGURE 5      |

MCI-210-G.M.L.



INDEX MAP



GEOLOGICAL BRANCH  
ASSESSMENT REPORT

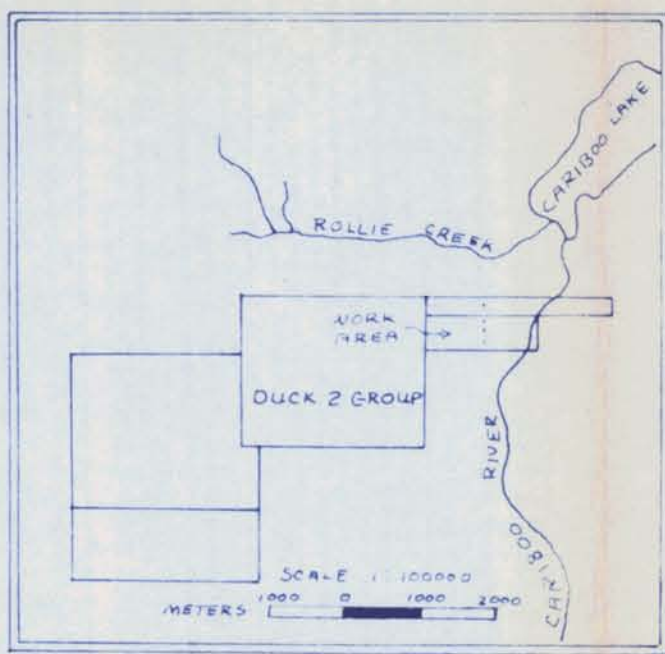
18,794



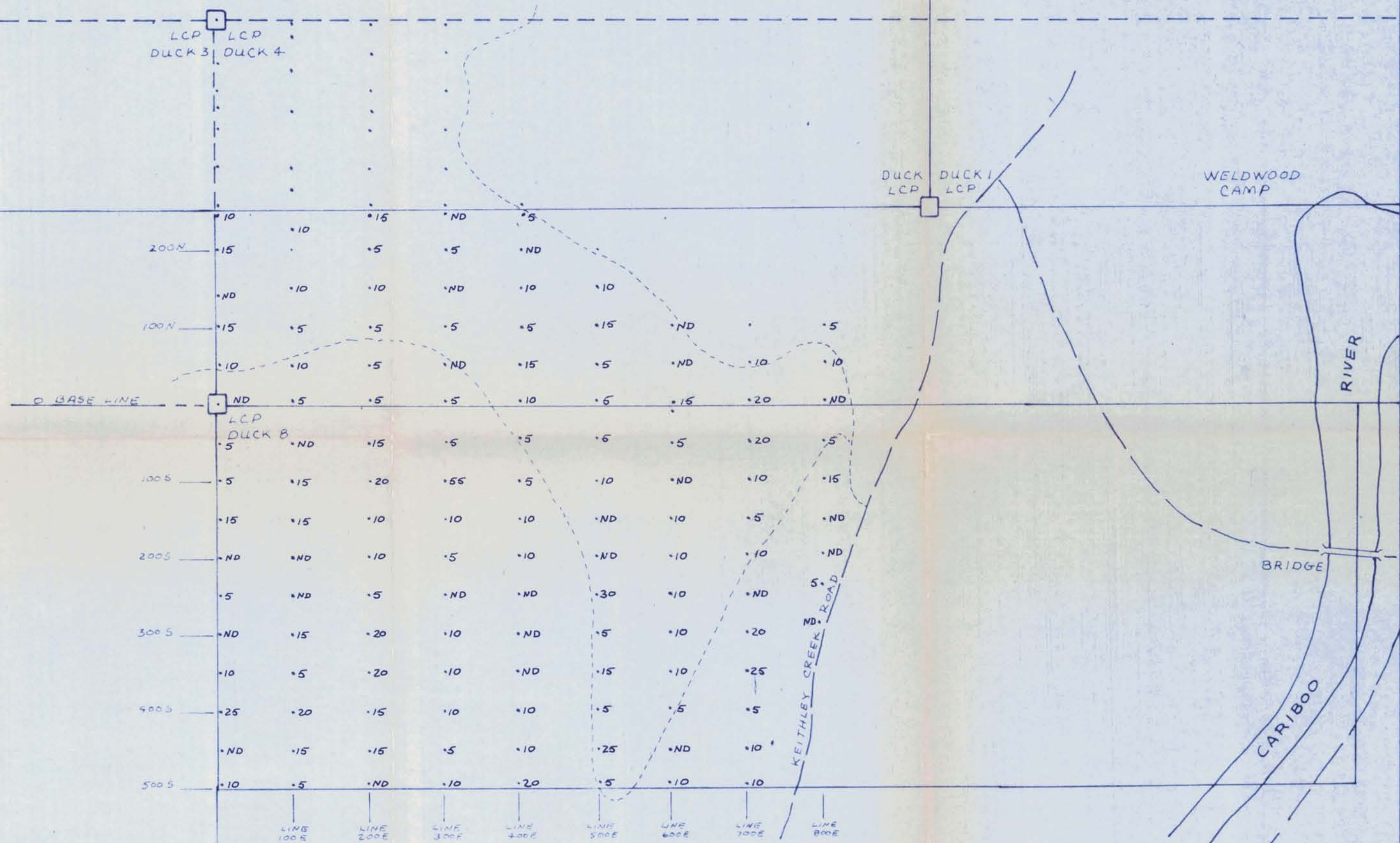
NOTE: CONTROL BY CHAIN AND COMPASS

|                  |  |  |  |            |  |  |  |      |  |      |  |             |  |  |  |              |  |             |  |                         |  |                         |  |                |  |
|------------------|--|--|--|------------|--|--|--|------|--|------|--|-------------|--|--|--|--------------|--|-------------|--|-------------------------|--|-------------------------|--|----------------|--|
| DWN. CHECK APPR. |  |  |  | ISSUED FOR |  |  |  | DATE |  | REV. |  | DESCRIPTION |  |  |  | REFERENCE    |  | No.         |  | DWG. No.                |  | GIBRALTAR MINES LIMITED |  | SAMPLE NUMBERS |  |
|                  |  |  |  |            |  |  |  |      |  |      |  |             |  |  |  | SCALE 1:5000 |  | AUGUST 1988 |  | GEOCHEMICAL SOIL SURVEY |  | FILE No. FIGURE 3       |  |                |  |
|                  |  |  |  |            |  |  |  |      |  |      |  |             |  |  |  |              |  |             |  | DUCK 2 CLAIM GROUP      |  |                         |  |                |  |

NCI-210-G.M.I.

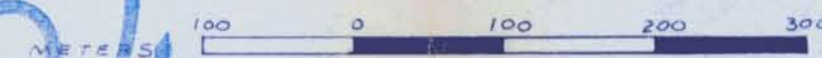


INDEX MAP



GEOLOGICAL BRANCH  
ASSESSMENT REPORT

18,794

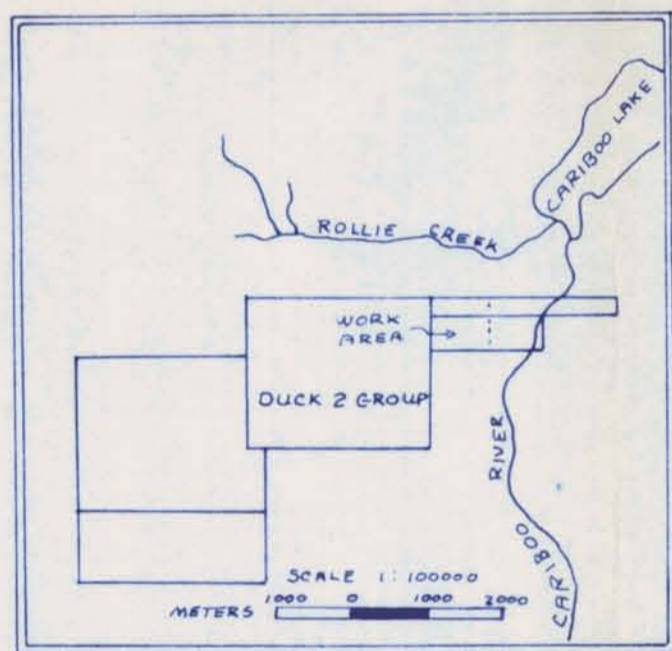


CONTROL BY CHAIN AND COMPASS

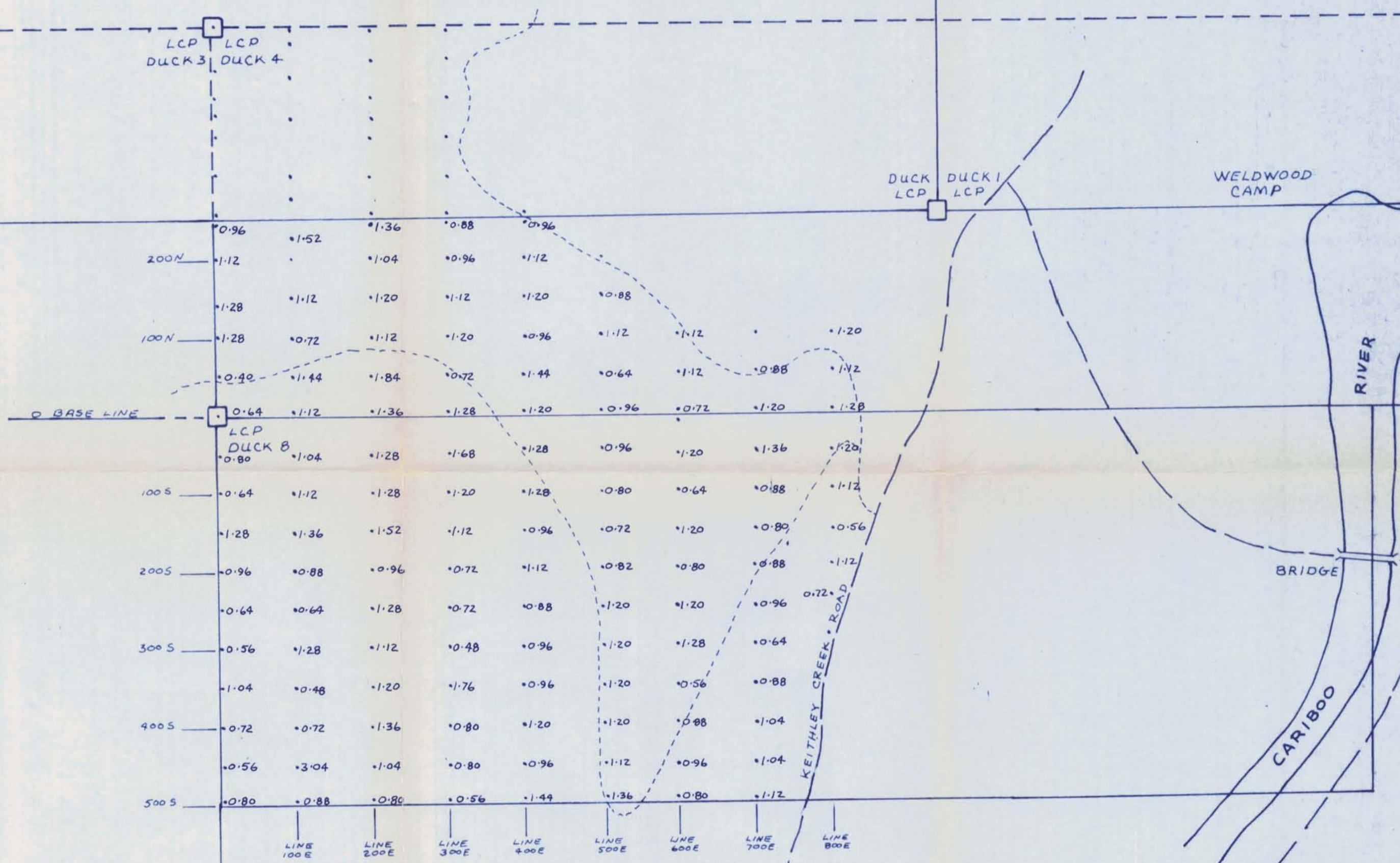
NOTE: ND = NONE DETECTED

NO. 270 (M.L.)

|                  |            |      |     |             |              |           |     |             |                         |                        |
|------------------|------------|------|-----|-------------|--------------|-----------|-----|-------------|-------------------------|------------------------|
| DWN. CHECK APPR. | ISSUED FOR | DATE | REV | DESCRIPTION | SCALE 1:5000 | REFERENCE | No. | DWG No.     | GIBRALTAR MINES LIMITED | GOLD CONCENTRATION PPB |
|                  |            |      |     |             |              |           |     | AUGUST 1988 | GEOCHEMICAL SOIL SURVEY | FILE No. FIGURE 8      |
|                  |            |      |     |             |              |           |     |             | DUCK 2 CLAIM GROUP      |                        |

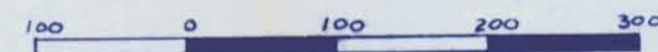


INDEX MAP



GEOLOGICAL BRANCH  
ASSESSMENT REPORT

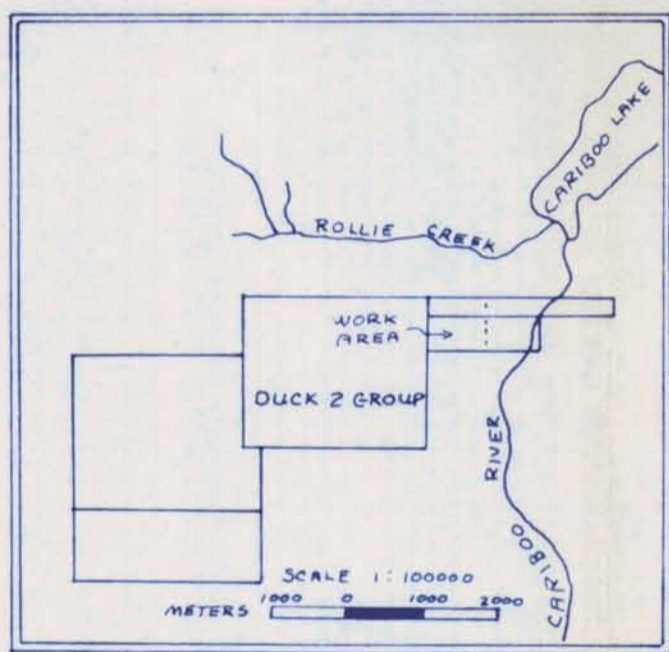
18,794



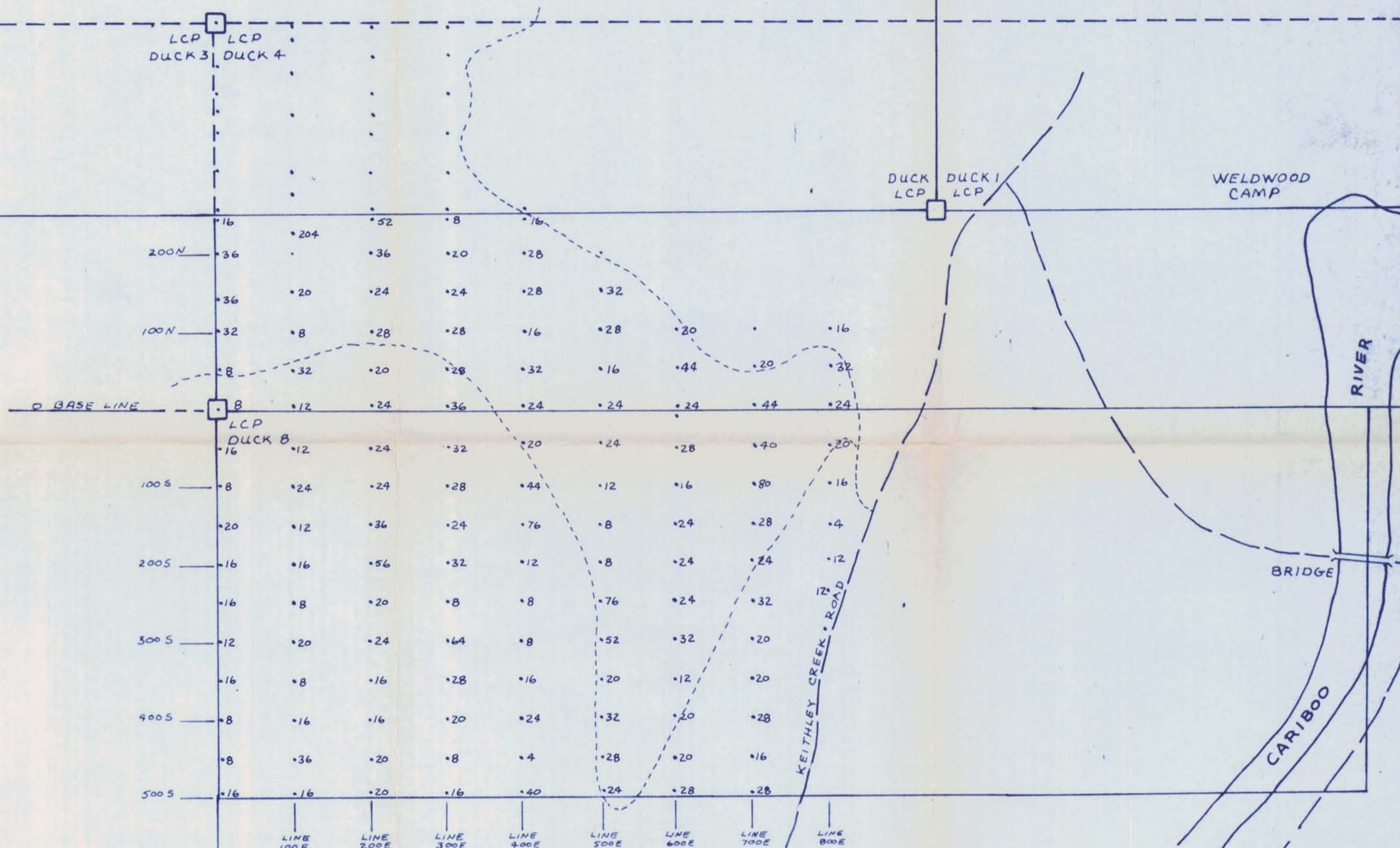
NOTE: CONTROL BY CHAIN AND COMPASS

|                   |  |  |  |            |  |  |  |      |  |  |  |      |  |  |  |             |  |  |  |              |  |  |  |           |  |  |  |     |  |  |  |          |  |  |  |             |  |  |  |                         |  |  |  |                         |  |  |  |                    |  |  |  |                          |  |  |  |                   |  |  |  |
|-------------------|--|--|--|------------|--|--|--|------|--|--|--|------|--|--|--|-------------|--|--|--|--------------|--|--|--|-----------|--|--|--|-----|--|--|--|----------|--|--|--|-------------|--|--|--|-------------------------|--|--|--|-------------------------|--|--|--|--------------------|--|--|--|--------------------------|--|--|--|-------------------|--|--|--|
| DIVN. CHECK APPR. |  |  |  | ISSUED FOR |  |  |  | DATE |  |  |  | REV. |  |  |  | DESCRIPTION |  |  |  | SCALE 1:5000 |  |  |  | REFERENCE |  |  |  | No. |  |  |  | DWG. No. |  |  |  | AUGUST 1988 |  |  |  | GIBRALTAR MINES LIMITED |  |  |  | GEOCHEMICAL SOIL SURVEY |  |  |  | DUCK 2 CLAIM GROUP |  |  |  | SILVER CONCENTRATION PPM |  |  |  | FILE No. FIGURE 7 |  |  |  |
|-------------------|--|--|--|------------|--|--|--|------|--|--|--|------|--|--|--|-------------|--|--|--|--------------|--|--|--|-----------|--|--|--|-----|--|--|--|----------|--|--|--|-------------|--|--|--|-------------------------|--|--|--|-------------------------|--|--|--|--------------------|--|--|--|--------------------------|--|--|--|-------------------|--|--|--|

NCI-210-G.M.L.



INDEX MAP



GEOLOGICAL BRANCH  
ASSESSMENT REPORT

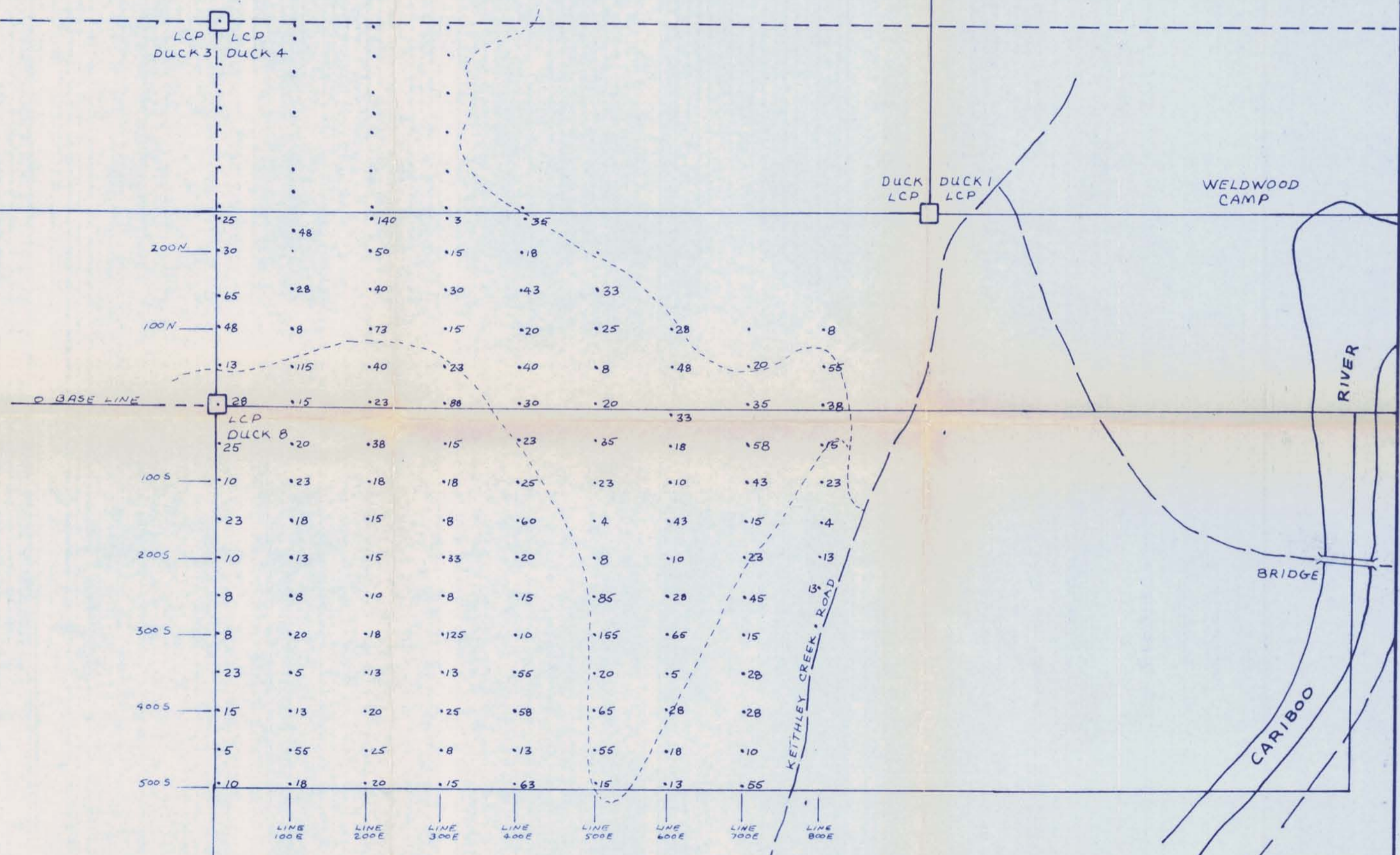
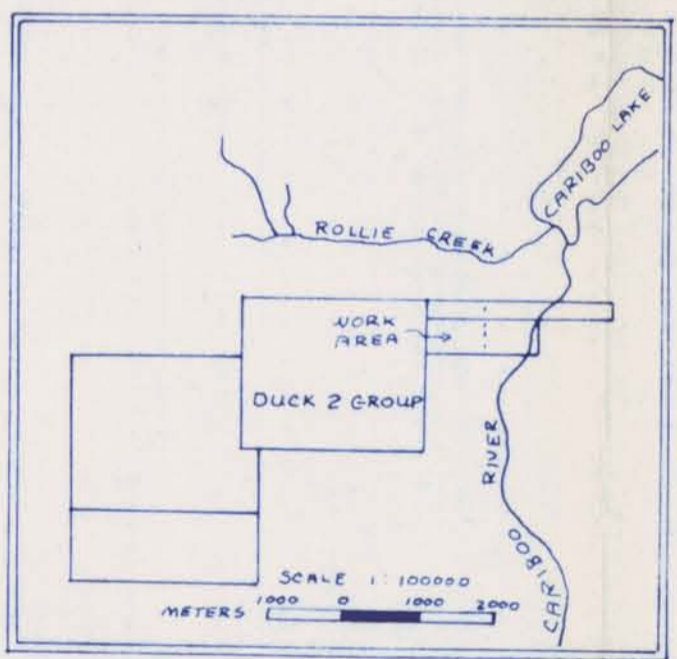
18,794

100 0 100 200 300 METERS

NOTE: CONTROL BY CHAIN AND COMPASS

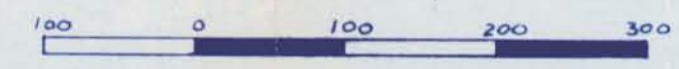
|                  |  |  |  |            |  |  |  |           |  |  |  |             |  |  |  |              |  |  |  |                        |  |  |  |                         |  |  |  |                         |  |  |  |                        |  |  |  |
|------------------|--|--|--|------------|--|--|--|-----------|--|--|--|-------------|--|--|--|--------------|--|--|--|------------------------|--|--|--|-------------------------|--|--|--|-------------------------|--|--|--|------------------------|--|--|--|
| DWN. CHECK APPR. |  |  |  | ISSUED FOR |  |  |  | DATE REV. |  |  |  | DESCRIPTION |  |  |  | SCALE 1:5000 |  |  |  | REFERENCE No. DWG. No. |  |  |  | GIBRALTAR MINES LIMITED |  |  |  | GEOCHEMICAL SOIL SURVEY |  |  |  | LEAD CONCENTRATION PPM |  |  |  |
|                  |  |  |  |            |  |  |  |           |  |  |  |             |  |  |  |              |  |  |  | AUGUST 1988            |  |  |  | DUCK 2 CLAIM GROUP      |  |  |  | FILE No. FIGURE 6       |  |  |  |                        |  |  |  |

NCI-20-G.M.L.



GEOLOGICAL BRANCH  
ASSESSMENT REPORT

18,794



NOTE: CONTROL BY CHAIN AND COMPASS

|                  |            |      |      |             |              |     |         |                          |  |
|------------------|------------|------|------|-------------|--------------|-----|---------|--------------------------|--|
| DWN. CHECK APPR. | ISSUED FOR | DATE | REV. | DESCRIPTION | SCALE 1:5000 | No. | DWG No. | GIBRALTAR MINES LIMITED  |  |
|                  |            |      |      |             |              |     |         | GEOCHEMICAL SOIL SURVEY  |  |
|                  |            |      |      |             |              |     |         | COPPER CONCENTRATION PPM |  |
|                  |            |      |      |             |              |     |         | FILE No. FIGURE 4        |  |

MCL 210 G.M.I.