

LOG NO: 0728	RD.
ACTION:	
FILE NO:	

GEOCHEMICAL AND GEOLOGICAL REPORT
ON THE
WHITE BEAR - 1 & 4 MINERAL CLAIMS

No. of Units : 40
Record No. : 3244 and 3289
Province : British Columbia
Mining Division : Atlin
Map : 104 J 4W

Latitude : 58° 13'N
Longitude : 131° 48'W

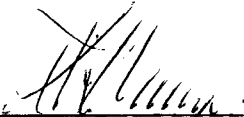
FOR
UNITED CAMBRIDGE MINES LIMITED
AND
INTEREX DEVELOPMENT CORP.

July 17, 1989

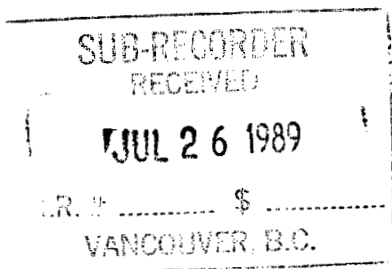
BY

GEOLOGICAL BRANCH
ASSESSMENT REPORT

18,927


W. THOMPSON

12534-99A Avenue,
Surrey, B.C. V3V 2R5
Phone: (604)588-0374



INDEX

	PAGE	
1.0	SUMMARY	1
	FIGURE 1 - WHITE BEAR PROPERTY LOCATION MAP	2
	FIGURE 2 - WHITE BEAR CLAIM LOCATION MAP	3
2.0	INTRODUCTION	4
2.1	Access	4
2.2	History	4
3.0	GEOLOGY	5
3.1	Property Geology	5
3.2	Mineralization	5
4.0	TOPOGRAPHY, VEGETATION AND CLIMATE	6
5.0	PROPERTY DEFINITION	6
6.0	RECENT WORK DONE	7
6.1	Procedure	7
6.1.1	Line Cutting	7
6.1.2	Sampling	8
6.1.3	Sample Analysis	8
6.1.4	White Bear Outcrop Descriptions	9
7.0	COST STATEMENT	11
8.0	CONCLUSIONS AND RECOMMENDATIONS	12
	FIGURE 3 - WHITE BEAR 1 AND 4 CLAIMS - (IN BACK FOLDER)	
	FIGURE 4 - GOLD GEOCHEMISTRY IN PPB	13
	FIGURE 5 - COPPER GEOCHEMISTRY IN PPM	14
	FIGURE 6 - GOLD GEOCHEMISTRY - ROCK SAMPLES IN PPB	15
	FIGURE 7 - GOLD/COPPER GEOCHEMISTRY GRID-2	16
APPENDIX 1	CERTIFICATION OF ANALYSIS	
APPENDIX 2	CERTIFICATION OF AUTHOR	
APPENDIX 3	REFERENCES	

1.0

SUMMARY

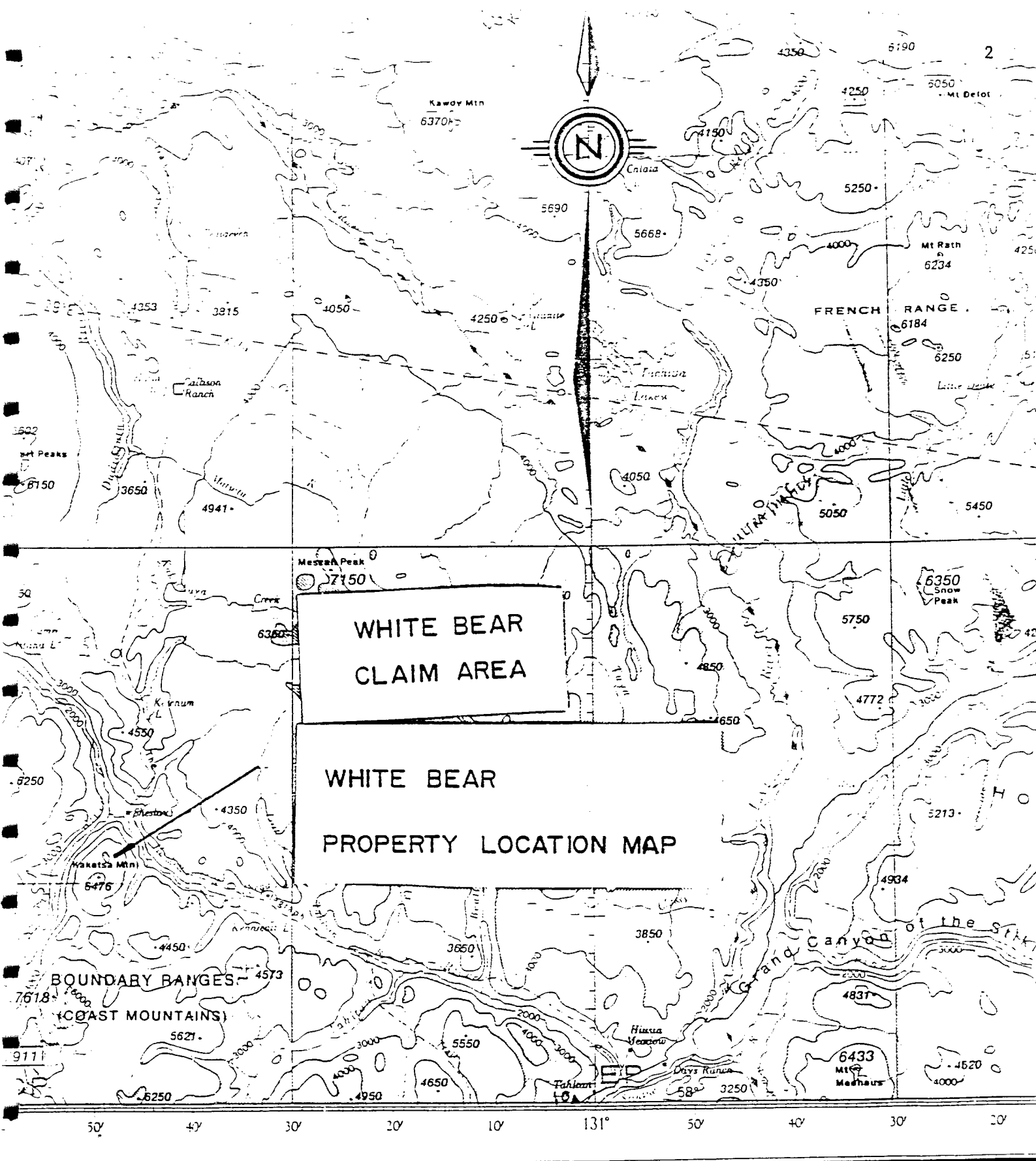
The White Bear Property lies on Kaketsa mountain in North Western British Columbia about 121 km (67 miles) by air south west of Dease Lake, B.C.

The property originally was examined for porphyry type copper deposits. Recent prospecting indicated a potential for smaller copper gold vein deposits. Several significant veins have been encountered, the longest one of which is over 800 ft. long and is between 3 and 15 feet wide. Chip samples to date indicate gold values as high as 1350 ppb (No. 2 + 70s 24 + 00E), and copper up to 3.0%.

Two small soil geochemical surveys were conducted over the areas of most interest. These were combined with a rough geological mapping program to try to identify some areas for immediate trenching. The geological data and sample sites are plotted on Figure 3 (a map at the back of the report scale: 1" = 200').

The property definitely warrants a more detailed examination in the form of more detailed mapping, trenching, soil sampling and possibly diamond drilling to test the depth and extent of the mineralization in at least three veins. A large gold-copper geochemical anomaly is developing on the eastern portion of the grid. This should be examined by additional sampling and trenching.

This report covers the work done during the month of June, 1989.



WHITE BEAR
CLAIM AREA

WHITE BEAR
PROPERTY LOCATION MAP

UNITS IN FEET
Edition 1972
Rights Reserved 1972

Produced by the Surveys and Mapping Branch
Department of Energy, Mines and Resources

ELEVATIONS IN FEET

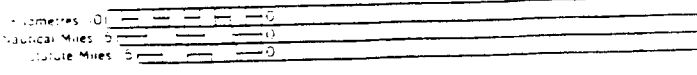
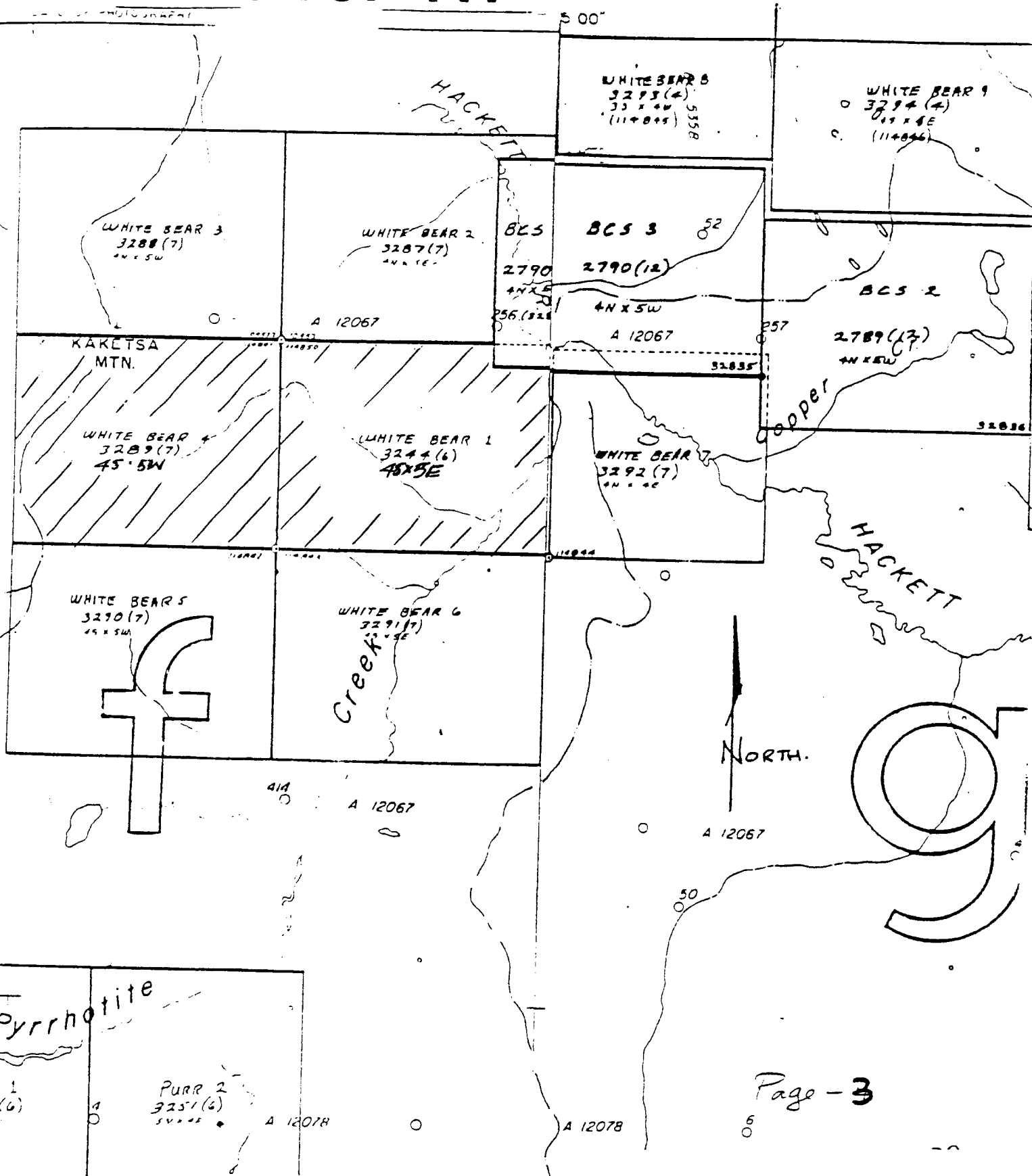


FIG. 1



Page - 3

Miles 1 3 0 1 2 Miles

Metres 1000 500 0 1000 2000 3000 Metres

Kilometres 1 3 0 1 2 3 Kilometres

WHITE BEAR FIG. 2

PROPERTY LOCATION MAP

2.0 INTRODUCTION

The White Bear Property is located in North Western British Columbia on and around Kaketsa mountain, about 121 km (67 miles) south west of Dease Lake, B.C. Recent prospecting has confirmed the presence of extensive copper veins in a porphyry system with associated anomalous gold mineralization. One vein that varies from 3 feet wide to 15 feet wide was traced on surface for over 800 feet in length.

Two small soil geochemical surveys combined with chip sampling and mapping was conducted in June 1989, the results of which are covered in this report. These results indicate at least a small gold copper deposit has been identified, and there still exists a significant potential for a gold-copper porphyry deposit with soil gold values as high as 280 ppb and copper soil values as high as 4900 ppm (0.49%).

2.1 Access

At this time access is limited to the property by helicopter only. The nearest air strip is about 2 km to the north from the property, this is a gravel strip at Sheslay where a fisheries camp operates during some summer months.

2.2 History

In 1934 Copper Creek was discovered. Copper Creek lies east of the White Bear property and flows into the Hackett River which lies on the boundary of the White Bear 1 claim. Since the discovery of Copper Creek various companies such as Kennecott Copper, Highland Bell, Amax, Newmont, Skyline Explorations Ltd. and United Cambridge Mines Ltd. have conducted several geophysical, geochemical mapping, drilling and prospecting surveys over and around the Kaketsa Mountain-Copper Creek-Kennecott Lake area. Most of the previous work was aimed at porphyry copper-molybdenum deposits with the exception of the more recent United Cambridge Mines work on their Moon Claims where significant gold copper anomalies were found to be associated with geophysical conductors.

3.0 GEOLOGY

The BCDM open file map 707 indicates that the area is underlain by the Upper Triassic Stuhini Formation which consists of augite, and coarse bladed plagioclase porphyry, breccia and flows; tuff, volcanic sandstone and conglomerate; minor siltstone, graywacke, shale; and diabase dikes. This suite was intruded by a Late Triassic and Early Triassic intrusive. This intrusive is described as a syenite, monzonite to diorite.

3.1 Property Geology

The property is covered by a hornblende andesite which was intruded by a syenitic to monzonite-diorite as evidenced by hot contacts and dioritic dikes cutting the volcanics. Late stage mineralization was injected into shear zones which cut both the volcanics and the intrusive rocks. The mineralization extends into the wall rocks and the intrusive itself appears to be anomalous in copper and gold.

3.2 Mineralization

The mineralized shear zones contain quartz, carbonate, magnetite, hematite, chalcopyrite, malachite, and one sample WBO+40N 20+80E indicates significant lead (0.12%), zinc (0.18%), silver 45.8 grams/ton. At least 3 shear zones have been observed and there are indications of more. The most prominent vein filled zone extends for a distance of at least 800 feet and varies in width from 3 feet to at least 15 feet. This mineralization zone dips steeply to the west and generally trends south-south-east.

Soil sampling on lines 22+00E and 24+00E indicate the potential presence of a gold-copper porphyry type deposit with copper in soil up to 4900 ppm and gold up to 180 ppb. A rock sample nearby assayed 6300 ppm Cu and 1350 ppb Au. The second two line grid east of the cabin produced gold in soil values all above 15 ppb with a high of 280 ppb. The highest copper value was 1100 ppm (0.1%) with an associated 0.7 ppm Ag.

4.0

TOPOGRAPHY, VEGETATION AND CLIMATE

The property lies at an elevation of between 2000 feet and 6476 feet. The valleys are covered by spruce, pine, balsam, aspen and cottonwood forests, while the slopes of Kaketsa Mountain are recovering from forest fire damage with mostly alder, willow and young pine growth.

The climate as recorded from the nearest weather recording office at Telegraph Creek, about 102 km east-southeast of the property is detailed below:

Warmest month - July	average daytime temp.	+23°C
	average night lows	+ 9°C
Coldest month - January	average daytime temp.	-14°C
	average night lows	-22°C
Warmest temperature ever recorded		+36°C
Coldest temperature ever recorded		-42°C
Average annual rainfall		227 mm
Average annual snowfall		183 cm
Total annual precipitation		377 mm

5.0

PROPERTY DEFINITION

The property consists of the White Bear 1 and 4 claims (40 units) in the Atlin mining division and with this report will have assessment applied to them such that the expiry dates will be in 1992 (see details below).

<u>CLAIM NAME</u>	<u>RECORD NO.</u>	<u>NO. UNITS</u>	<u>EXPIRY DATE</u>
White Bear -1	3244	20	June 08, 1992
White Bear -4	3289	<u>20</u>	July 11, 1992
TOTAL UNITS		40	

Map Sheet: NTS. 104 J 4W

The claims are presently held in trust for United Cambridge Mines Limited and Interex Development Corp. by W. Thompson.

FMC: No. 285204
 Code: THOM WH
 Phone: 588-0374
 Address: 12534-99A Avenue
 Surrey, B.C.
 V3V 2R5

6.0 RECENT WORK DONE

The White Bear Claims were staked in May and June 1988 by W. Thompson on the basis of reports by Skyline Explorations Ltd., and the extensive gossan zone that is exposed on the property. The reported extensive copper mineralization was confirmed by prospecting (Prospecting Report on the White Bear 1 & 4 Mineral Claims by W. Thompson - June 1989, filed with the B.C. Department of Mines).

The presence of gold in the system was also confirmed from grab samples taken in old trenches. The June 1989 report suggested additional work should be done on the property, so as part of another staking program, two people (W. Thompson and Warren Carlick) spent 8 days on the property. An additional three days were spent accumulating data and travelling to the property.

In the middle of the property there is an excellent log cabin suitable for up to 6 people. This cabin was obviously built by Skyline Explorations Ltd. The old lines were used for the grid and 9000 feet of grid was re-established. Soil sampling and mapping were conducted over the grid. There are numerous roads and trenches on the property - some of the roads were mapped in the area where the geochemical survey was conducted. Rock chip samples were taken from the veins and shear zones where mineralization (copper) was observed and, where possible, the veins were traced on surface.

6.1 Procedure

6.1.1 Line Cutting

The old lines cut by Skyline Explorations Limited were located with some difficulty due to their age. These were re-marked, paced and compassed. The grid lines lie at 170°az with the base line being at 80°az.

A total of 9000 feet of grid was marked in the main area, and where available, rock or soil samples were taken at 100' intervals. The lines were marked with flourscent orange ribbon and the pickets were marked with graphite lumber crayons.

North-east of the main area is a steep valley with gossanous sides. A second small grid consisting of two pace, 900 foot compass lines were emplaced at an angle of 126°az to test the potential for gold on the ridge top. Both grids have a line spacing of 200 feet with pickets or markings every 100 feet.

6.1.2 Sampling

Most of the soil samples consisted of fine talus material. Where soil development was minimal, basically any material available was stuffed in a bag. Where possible the oxidized "B" horizon was preferentially selected for the soil samples.

The rock sampling was more specific and chip samples were taken using the standard technique of attempting to take small equal sized chips every two to three inches across the vein or zone.

A total of 86 soil samples and 14 rock samples were taken.

6.1.3 Sample Analysis

The samples were shipped to Chemex Labs Ltd., 212 Brooksbank Avenue, North Vancouver, B.C., Phone:984-0221. Both the rock and soil samples were geochemically analyzed for Au, Cu, Pb, Zn and Ag. The gold and copper high values were then re-analyzed using assay techniques for further determine the details of the values. All the geochemical analysis data are appended and plotted on figures 3 & 4, 5, 6 & 7.

6.1.4 White Bear Outcrop Descriptions

- Note: Strikes are tentative due to magnetite in the area which affects compass readings.
- W-1: Sample No. WB 24E 0+50S. Width - 15.0 ft in trench. Mineralization: - cpy, py, magnetite, hematite, malachite shearing. Strike 125° dip 50°W. Host is granodiorite.
- W-2: Sample No. WB 24E 2+70S. Width - 3.0 ft in trench. Shear-zone in granodiorite with copper mineralization, also magnetite and hematite.
- W-3: Sample No. WB 1+00S 22+00E. Width - 5.0 ft (old sample No. WB WT-4-15). Granodiorite hosting a veing/shear zone strike 70° dip 70°NW.
- W-4: Sample No. WB 2N 22+60E. Width - 5.0 ft - in road cut. Quartz veining with copper mineralization hosted by granodiorite. Other mineralization includes magnetite, pyrite and hematite. Strike: 40° dip 90°
Strike: 160° dip 90°
- W-5: Sample No. WB 6+50N 21+60E. Width - 5.0 ft in trench. Granodiorite near the volcanic contact extensive vein goes generally SSE from this point. Strike 135° dip 72° SW. The vein consists of erratic quartz lenses mineralized with pyrite, cpy, magnetite, hematite, malachite.
- W-6: Sample No. WB 21+00E 4N. Width - 5.0 ft. Vein sample hosted by granodiorite. Mineralization includes magnetite, hematite, pyrite, cpy, quartz and carbonate veining, azurite and malachite.
- W-7: Sample No. WB 2+50N 22+60E. Width 10.0 ft. - road cut. Similar to site WB-6.
- W-8: Sample No. 0+50S 20+40E. Width 3.0 ft. - road cut. Malachite staining in area near volcanic-intrusive contact.
- W-9: Sample No. 0+40N 20+80E. Shear zone in granodiorite with cu-oxide mineralization. Minor cpy, py and magnetite. Strike - 120° dip 70°SW.

- W-10: Sample Nos. WBY-1, Width 2 ft.; WBY-2, Width 12'.
20 ft wide shear zone with quartz veining, strong
cpy, py, magnetite and cu oxides. Traced over a
length of about 100 ft. Strike 150° dip 70° SW.
The host rock is volcanic (Andesite).
- WBX-7R: Coarse grained hornblende porphyritic andesite -
spotty pods of sulphide (py, cpy), and carbonate
mineralization up to 4 ft. granitic dikes cutting
the volcanics.
- WBX-8R: Hornblende porphyritic volcanics and cpy, py and
magnetite in road cut.

7.0

COST STATEMENT

Motels	\$ 58.32
Food & Restaurant	367.80
Consulting (W. Thompson - Surrey B.C.) 3 days x 1/2 + 8 days @ \$300/day	2,850.00
Labour (Warren Carlick - Winfield, B.C.) 1 day x 1/2 + 8 days @ \$100/day	850.00
Stationery & maps	31.12
Equipment	27.46
Parking	8.00
Fuel and parts	30.76
Taxi	40.00
Shipping (overweight luggage)	50.00
Chainsaw rental (10 days @ \$25/day)	250.00
Air fare	384.00
Helicopter - move people & equipment in	2,718.90
Assays	
Rock x 14	253.50
Soil x 86	1,185.00
Report - drafting	300.00
Writing report	1,200.00
	<hr/>
TOTAL COSTS	\$10,604.86

8.0

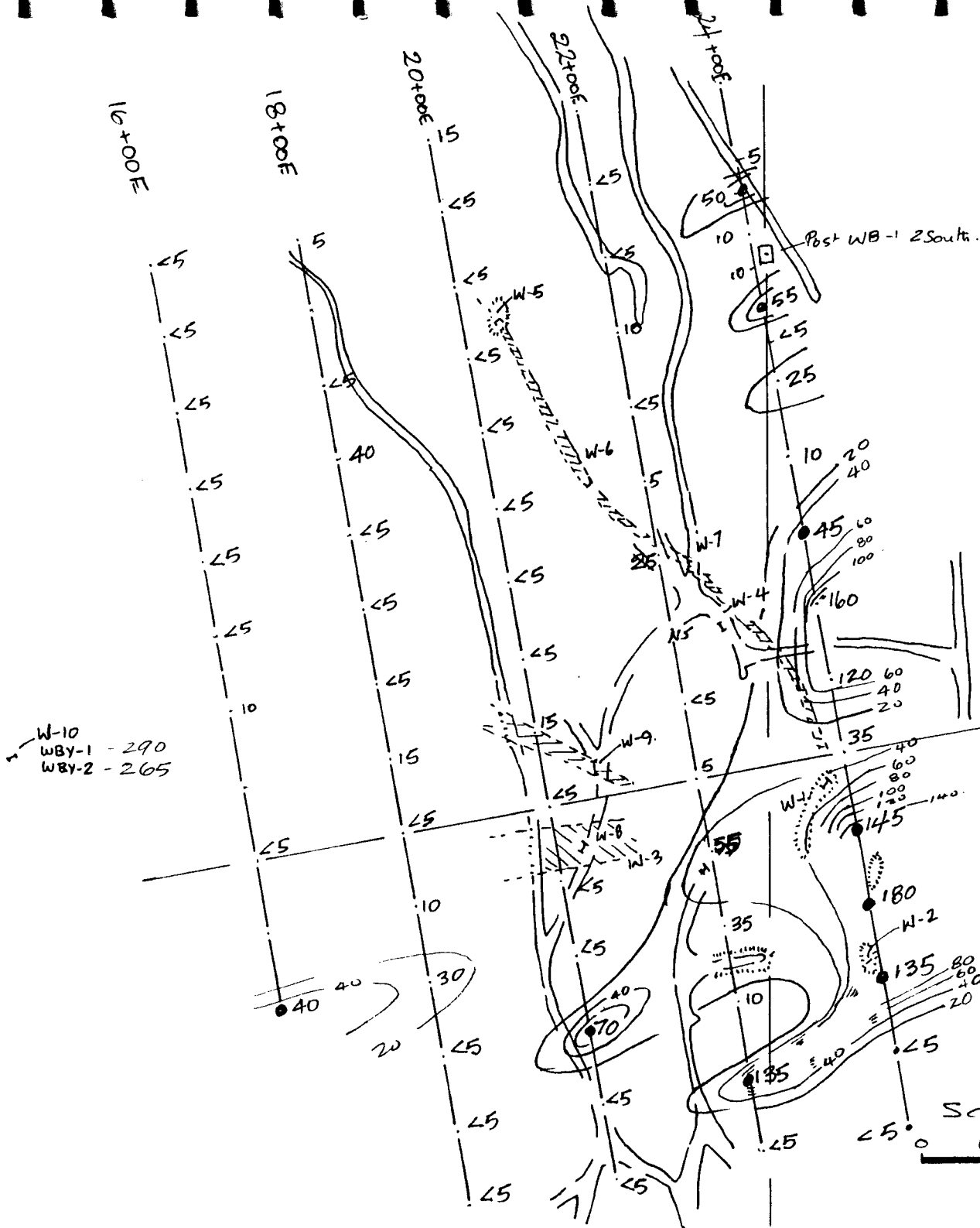
CONCLUSIONS AND RECOMMENDATIONS

Geological mapping and geochemical results confirm the potential for both vein type and porphyry type copper-gold deposits. A detailed expanded geochemical survey is warranted. This was previously done by Skyline Resources, however, they did not record analysing the soil samples for gold which is anomalous in the area.

Initially the re-establishment of the old grid would be required. This would be followed by the collecting of soil and rock samples.

In the grid-1 area, trenching could be commenced immediately to better expose the main 800 foot long copper vein. Also, a long trench should be put in along line 24+00E from 3+00S to 4+00N and re-excavating the road from about 6+00N to 8+00N.

The grid-2 area should be extended to encompass the gossan zone to the west in the creek, and as far as the gossam goes to the east. Also the lines should be lengthened both north and south.



- 9+00N
 - 8+00N
 - 7+00N
 - 6+00N
 - 5+00N
 - 4+00N
 - 3+00N
 - 2+00N
 - 1+00N
 P/L 0+00N 80° ag.



LEGEND.

Values in
 - contours
 - in 20ppb intervals

- Vein or shear zone

- W-7, WB - sample site

- ROADS.

- TRENCH.

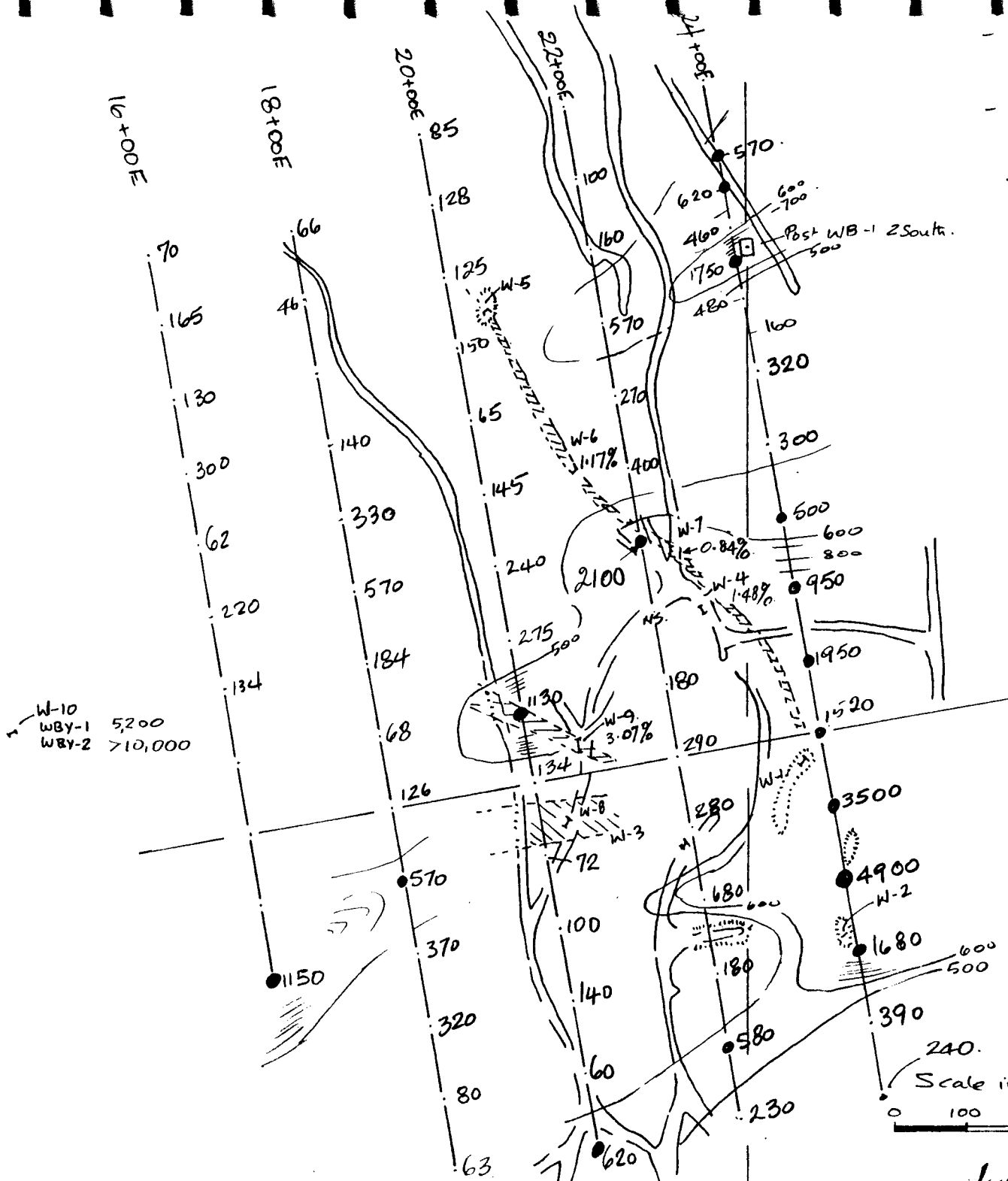
- Claimpost.

NS - no sample

W-10
 WB-1 - 290
 WB-2 - 265

White Bear 1 & 4 claims
 GOLD Geochemistry.
 in PPb.

Scale in feet.
 0 100 200



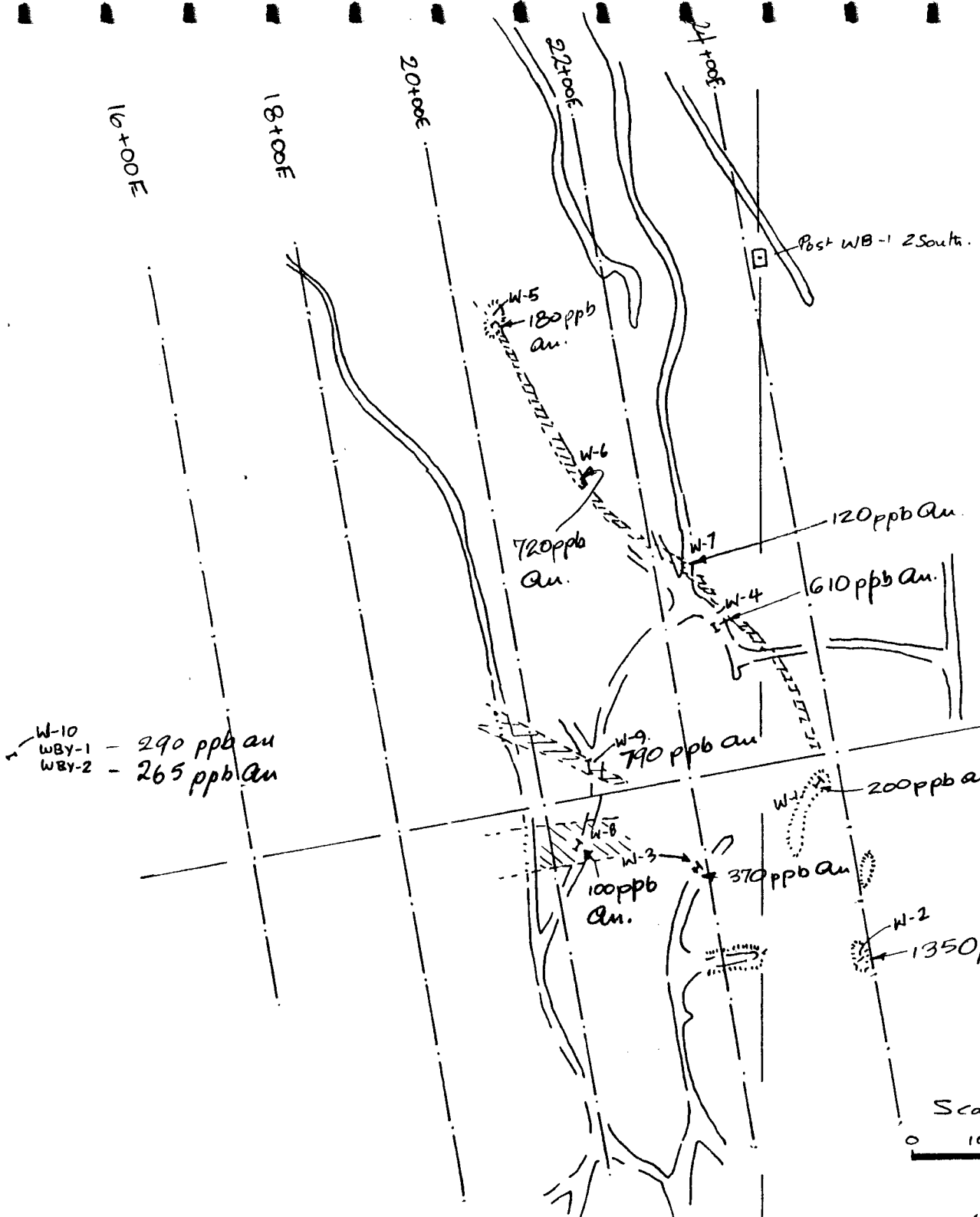
- 9+00N
 - 8+00N
 - 7+00N
 - 6+00N
 - 5+00N
 - 4+00N
 - 3+00N
 - 2+00N
 - 1+00N
 - 0+00N 80° ag.
 - 1+00S
 - 2+00S
 - 3+00S



- LEGEND.
- Values in
 - contours - in 100ppm intervals
 - vein or shear zone
 - sample site
 - ROADS.
 - TRENCH.
 - Claim post.

White Bear 1 & 4 claims
 Copper Geochemistry.
 in ppm.

Scale in feet.
 0 100 200

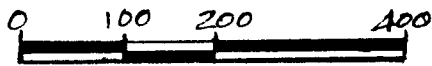
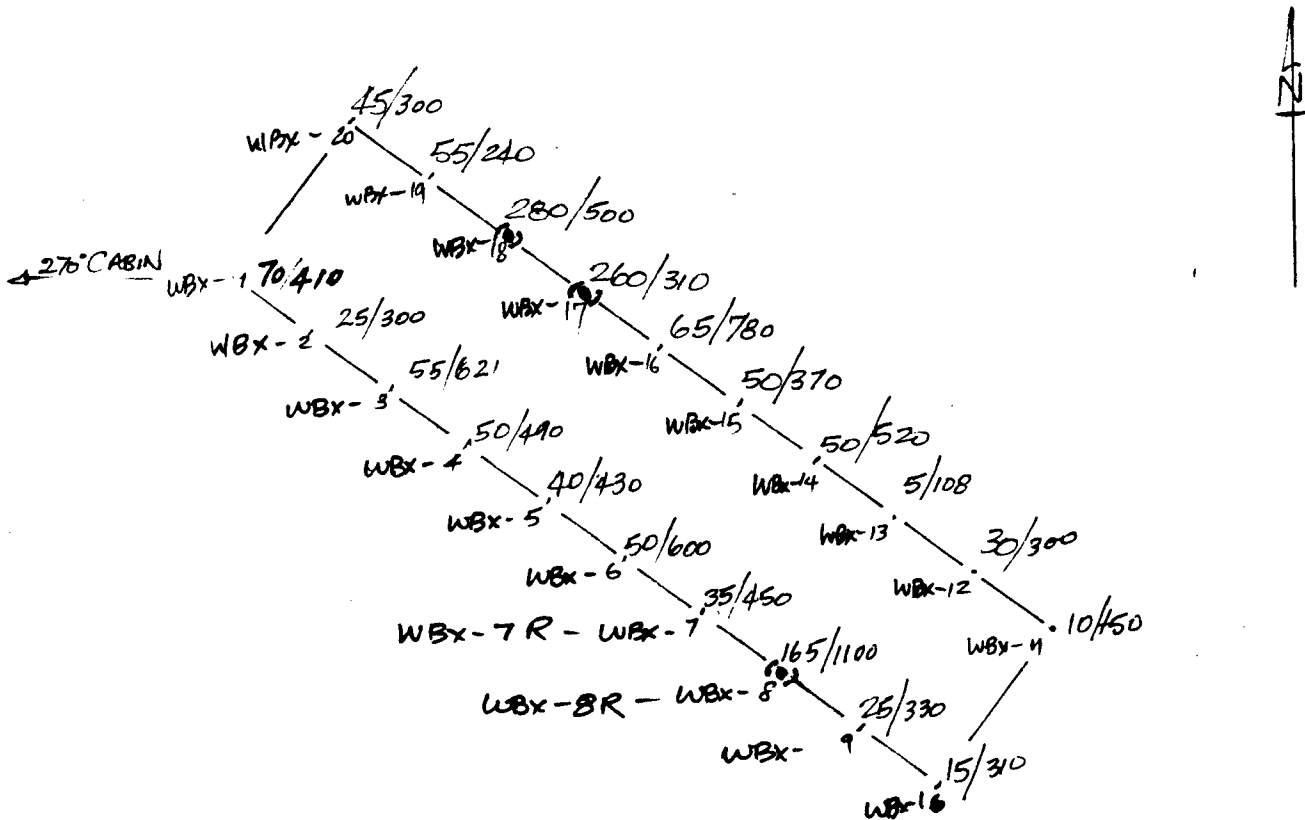


- 9+00N
 - 8+00N
 - 7+00N
 - 6+00N
 - 5+00N
 - 4+00N
 - 3+00N
 - 2+00N
 - 1+00N
 0+00N 80' ag.

N. Bagmulli
 LEGEND.
 Values in
 - contours
 - in interval
 - vein or shear zone
 W-7, WB - sample site
 - ROADS.
 - TRENCH.
 □ claim post.

White Bear 1 & 4 claims
 GOLD Geochemistry.
 ROCK SAMPLES.
 IN PPB.

Scale in feet.
 0 100 200



Scale in feet.

Samples / WBX, WBX-7R, WBX-8R

gold ppb / Cu ppm.

GOLD/COPPER GEOCHEMISTRY.

WHITE BEAR CLAIMS.

SOIL LINES.

GRID-2

July 1989.



Chemex Labs Ltd.

Analytical Chemists • Geochemists • Registered Assayers

212 BROOKSBANK AVE., NORTH VANCOUVER,
BRITISH COLUMBIA, CANADA V7J-2C1

PHONE (604) 984-0221

To: INTEREX DEVELOPMENT CORP.

**

1003 - 470 GRANVILLE ST.

VANCOUVER, BC

V6C 1V5

*** INVOICE NUMBER 18919428 ***

BILLING INFORMATION

Date : 10-JUL-89
Project : WHITE BEAR
P.O. # : NONE
Account : DPV

Comments:

Billing : For analysis performed on
Certificate A8919428

Terms : Net payment in 30 Days
1.5% per month (18% per annum)
charged on overdue accounts.

Please remit payments to:

CHEMEX LABS LTD.
212 Brooksbank Ave.,
North Vancouver, B.C.
Canada V7J-2C1

NOTE: New charges for FAXING of data
Effective MAY 22/89, As follows:
\$0.50/data page inside N. America
\$2.00/data page outside N. America

CHEMEX CODE	ANALYSIS DESCRIPTION	SAMPLES ANALYZED	UNIT PRICE	AMOUNT
100	- Au ppb FA+AA			
2	- Cu ppm			
4	- Pb ppm			
5	- Zn ppm			
6	- Ag ppm Aqua R	86	12.50	1075.00
Sample preparation and other charges :				
201	- Soil + sediment -80 mesh	70	1.00	70.00
203	- -35 mesh sieve + ring	14	2.50	35.00
217	- Geochem - RING ONLY	2	2.50	5.00
Total Cost \$				1185.00
TOTAL PAYABLE \$				1185.00

APPENDIX 1

CERTIFICATION OF ANALYSIS



Chemex Labs Ltd.

Analytical Chemists • Geochemists • Registered Assayers

212 BROOKSBANK AVE., NORTH VANCOUVER,
BRITISH COLUMBIA, CANADA V7J-2C1

PHONE (604) 984-0221

To: INTEREX DEVELOPMENT CORP.

**

1003 - 470 GRANVILLE ST.
VANCOUVER, BC
V6C 1V5

*** INVOICE NUMBER 18919426 ***

BILLING INFORMATION

Date : 10-JUL-89
Project : WHITE BEAR
P.O. # : NONE
Account : DPV

Comments:

Billing : For analysis performed on
Certificate A8919426

Terms : Net payment in 30 Days
1.5% per month (18% per annum)
charged on overdue accounts.

Please remit payments to:

CHEMEX LABS LTD.
212 Brooksbank Ave.,
North Vancouver, B.C.
Canada V7J-2C1

NOTE: New charges for FAXING of data
Effective MAY 22/89, As follows:
\$0.50/data page inside N. America
\$2.00/data page outside N. America

CHEMEX CODE	ANALYSIS DESCRIPTION	SAMPLES ANALYZED	UNIT PRICE	AMOUNT
100	- Au ppb FA+AA			
2	- Cu ppm			
4	- Pb ppm			
5	- Zn ppm			
6	- Ag ppm Aqua R	14	12.50	175.00
Sample preparation and other charges :				
205	- Rock Geochem - RING	14	3.75	52.50
Total Cost \$				227.50
TOTAL PAYABLE \$				227.50



Chemex Labs Ltd.

Analytical Chemists * Geochemists * Registered Assayers
212 BROOKSBANK AVE., NORTH VANCOUVER,
BRITISH COLUMBIA, CANADA V7J-2C1
PHONE (604) 984-0221

To: INTEREX DEVELOPMENT CORP.

1003 - 470 GRANVILLE ST.
VANCOUVER, BC
V6C 1V5

A8919426

Comments: ATTN: W. THOMPSON

CERTIFICATE A8919426

INTEREX DEVELOPMENT CORP.
PROJECT : WHITE BEAR
P O # : NONE

Samples submitted to our lab in Vancouver, BC.
This report was printed on 10-JUL-89.

SAMPLE PREPARATION

CHEMEX CODE	NUMBER SAMPLES	DESCRIPTION
205	14	Rock Geochem: Crush,split,ring

ANALYTICAL PROCEDURES

CHEMEX CODE	NUMBER SAMPLES	DESCRIPTION	METHOD	DETECTION LIMIT	UPPER LIMIT
100	14	Au ppb: Fuse 10 g sample	FA-AAS	5	10000
2	14	Cu ppm: HNO3-aqua regia digest	AAS	1	10000
4	14	Pb ppm: HNO3-aqua regia digest	AAS-BKGD CORR	1	10000
5	14	Zn ppm: HNO3-aqua regia digest	AAS	1	10000
6	14	Ag ppm: HNO3-aqua regia digest	AAS-BKGD CORR	0.2	100.0



Chemex Labs Ltd.

Analytical Chemists * Geochemists * Registered Assayers
 212 BROOKSBANK AVE., NORTH VANCOUVER,
 BRITISH COLUMBIA, CANADA V7J-2C1
 PHONE (604) 984-0221

To: INTEREX DEVELOPMENT CORP.

1003 - 470 GRANVILLE ST.
 VANCOUVER, BC
 V6C 1V5

Project: WHITE BEAR
 Comments: ATTN: W THOMPSON

**Page No. : 1
 Tot. Pages: 1
 Date : 10-JUL-89
 Invoice # : I-8919426
 P.O. # : NONE

CERTIFICATE OF ANALYSIS A8919426

SAMPLE DESCRIPTION	PREP CODE	Au ppb FA+AA	Cu ppm	Pb ppm	Zn ppm	Ag ppm Aqua R					
WB 2+00N 22+60E	205 ---	610	>10000	< 58	56	0.5					
WB 2+50N 22+60E	205 ---	120	>10000	< 1	92	1.1					
WB 6+50N 21+60E	205 ---	180	8500	< 1	80	0.8					
WB 0+50S 24+00E	205 ---	200	8800	< 1	100	0.7					
WB 2+70S 24+00E	205 ---	1350	6300	< 1	80	1.0					
WBX-7R	205 ---	45	440	< 1	32	0.2					
WBX-8R	205 ---	60	1800	4	30	< 0.2					
WBY-1	205 ---	290	9000	1	175	1.0					
WBY-2	205 ---	265	5200	< 1	124	0.9					
21+00E 4N	205 ---	720	>10000	< 1	62	3.0					
0+40N 20+80E	205 ---	790	>10000	1200	1800	5.8					
2+50N 22+60E	205 ---	125	8200	< 1	84	0.9					
0+50S 20+40E	205 ---	100	3100	4	78	0.6					
1+00S 22+00E	205 ---	370	9400	< 1	51	1.1					

WHITE BEAR

CERTIFICATION : Hart Buchler



Chemex Labs Ltd.

Analytical Chemists * Geochemists * Registered Assayers

212 BROOKSBANK AVE., NORTH VANCOUVER,
BRITISH COLUMBIA, CANADA V7J-1C1

PHONE (604) 984-0221

To: INTEREX DEVELOPMENT CORP.

1003 - 470 GRANVILLE ST.
VANCOUVER, BC
V6C 1V5

A8919428

Comments: ATTN: W. THOMPSON

CERTIFICATE A8919428

INTEREX DEVELOPMENT CORP

PROJECT : WHITE BEAR

P.O.# : NONE

Samples submitted to our lab in Vancouver, BC.

This report was printed on 10-JUL-89.

SAMPLE PREPARATION

CHEMEX CODE	NUMBER SAMPLES	DESCRIPTION
201	70	Dry, sieve -80 mesh; soil, sed.
203	14	Dry, sieve -35 mesh and ring
217	2	Geochem:Ring only.no crush/split

ANALYTICAL PROCEDURES

CHEMEX CODE	NUMBER SAMPLES	DESCRIPTION	METHOD	DETECTION LIMIT	UPPER LIMIT
100	86	Au ppb: Fuse 10 g sample	FA-AAS	5	10000
2	86	Cu ppm: HNO ₃ -aqua regia digest	AAS	1	10000
4	86	Pb ppm: HNO ₃ -aqua regia digest	AAS-BKGD CORR	1	10000
5	86	Zn ppm: HNO ₃ -aqua regia digest	AAS	1	10000
6	86	Ag ppm: HNO ₃ -aqua regia digest	AAS-BKGD CORR	0.2	100.0

WHITE BEAR



Chemex Labs Ltd.

Analytical Chemists * Geochemists * Registered Assayers

212 BROOKSBANK AVE., NORTH VANCOUVER,
BRITISH COLUMBIA, CANADA V7J-2C1

PHONE (604) 984-0221

To : INTEREX DEVELOPMENT CORP.

1003 - 470 GRANVILLE ST.
VANCOUVER, BC
V6C 1V5

Project : WHITE BEAR *
Comments : ATTN: W THOMPSON

**Page No. : 1
Tot. Pages: 3
Date : 10-JUL-89
Invoice # : I-8919428
P.O. # : NONE

CERTIFICATE OF ANALYSIS A8919428

SAMPLE DESCRIPTION	PREP CODE	Au ppb FA+AA	Cu ppm	Pb ppm	Zn ppm	Ag ppm Aqua R						
WBX-01	201 ---	70	410	6	60	< 0.2						
WBX-02	201 ---	25	300	2	71	< 0.2						
WBX-03	201 ---	55	621	3	83	< 0.2						
WBX-04	201 ---	50	490	3	60	< 0.2						
WBX-05	201 ---	40	430	2	71	< 0.2						
WBX-06	201 ---	50	600	2	90	< 0.2						
WBX-07	201 ---	35	450	4	100	< 0.2						
WBX-08	201 ---	165	1100	2	106	< 0.7						
WBX-09	201 ---	25	330	4	110	0.2						
WBX-10	201 ---	15	310	4	108	< 0.2						
WBX-11	201 ---	10	150	2	370	< 0.2						
WBX-12	201 ---	30	300	2	370	0.2						
WBX-13	201 ---	5	108	4	180	0.2						
WBX-14	201 ---	50	520	4	210	< 0.2						
WBX-15	201 ---	50	370	4	130	< 0.2						WHITE BEAR
WBX-16	201 ---	65	780	3	100	< 0.2						
WBX-17	201 ---	260	310	2	50	< 0.2						
WBX-18	201 ---	280	500	3	78	< 0.2						
WBX-19	201 ---	55	240	4	100	< 0.2						
WBX-20	201 ---	45	300	2	100	< 0.2						
WBL16E 2+00N	201 ---	< 10	134	4	100	< 0.2						
WBL16E 3+00N	201 ---	< 5	220	3	80	< 0.2						
WBL16E 4+00N	201 ---	< 5	62	4	220	< 0.2						
WBL16E 5+00N	201 ---	< 5	300	2	120	< 0.2						
WBL16E 6+00N	201 ---	< 5	130	4	85	< 0.2						
WBL16E 7+00N	201 ---	< 5	165	4	67	< 0.2						
WBL16E 8+00N	201 ---	< 5	70	4	65	< 0.2						
WBL16E 2+00S	217 ---	< 40	1150	2	92	< 0.2						
WBL18E 0+00N	201 ---	< 5	126	5	83	< 0.2						
WBL18E 1+00N	201 ---	15	68	2	110	< 0.2						
WBL18E 2+00N	201 ---	< 5	184	6	80	< 0.3						
WBL18E 3+00N	203 ---	< 5	570	4	95	< 0.2						
WBL18E 4+00N	203 ---	< 5	330	4	80	< 0.2						
WBL18E 5+00N	201 ---	< 40	140	3	60	< 0.2						
WBL18E 7+00N	201 ---	< 5	46	2	50	< 0.2						
WBL18E 8+00N	201 ---	5	66	4	64	< 0.2						
WBL18E 1+00S	201 ---	10	570	4	72	< 0.2						
WBL18E 2+00S	201 ---	30	370	3	90	< 0.2						
WBL18E 3+00S	201 ---	< 5	320	2	68	< 0.2						
WBL18E 4+00S	201 ---	< 5	80	2	150	< 0.2						

CERTIFICATION :

Hart Buchler



Chemex Labs Ltd.

Analytical Chemists * Geochemists * Registered Assayers

212 BROOKSBANK AVE., NORTH VANCOUVER,
BRITISH COLUMBIA, CANADA V7J-2C1

PHONE (604) 984-0221

To: INTEREX DEVELOPMENT CORP.

1003 - 470 GRANVILLE ST.
VANCOUVER, BC
V6C 1V5

Project: WHITE BEAR

Comments: ATTN: W. THOMPSON

**Page No. : 2

Tot. Pages: 3

Date : 10-JUL-89

Invoice # : I-8919428

P.O. # : NONE

CERTIFICATE OF ANALYSIS A8919428

SAMPLE DESCRIPTION	PREP CODE	Au ppb FA+AA	Cu ppm	Pb ppm	Zn ppm	Ag ppm Aqua R					
WBL18E 5+00S	201	< 5	63	6	190	< 0.2					
WBL20E 0+00N	201	< 5	134	8	148	< 0.2					
WBL20E 1+00N	201	15	1130	3	67	< 0.2					
WBL20E 2+00N	201	< 5	275	2	85	< 0.2					
WBL20E 3+00N	201	< 5	240	4	150	< 0.2					
WBL20E 4+00N	201	< 5	145	3	67	< 0.2					
WBL20E 5+00N	201	< 5	65	6	96	< 0.2					
WBL20E 6+00N	201	< 5	150	2	54	< 0.2					
WBL20E 7+00N	201	< 5	125	2	47	< 0.2					
WBL20E 8+00N	201	< 5	128	2	64	< 0.2					
WBL20E 9+00N	201	15	85	2	55	< 0.2					
WBL20E 1+00S	201	< 5	72	6	134	< 0.2					
WBL20E 2+00S	203	< 5	100	3	70	< 0.2					
WBL20E 3+00S	201	70	140	4	73	< 0.2					
WBL20E 4+00S	201	< 5	60	4	110	< 0.2					
WBL20E 5+00S	201	< 5	620	4	134	< 0.5					
WBL22E 0+00N	201	5	290	1	90	< 0.2					
WBL22E 1+00N	203	< 5	180	1	58	< 0.2					
WBL22E 3+00N	203	25	2100	2	54	< 0.2					WHITE BEAR
WBL22E 4+00N	203	5	400	2	52	< 0.2					
WBL22E 5+00N	201	< 5	270	2	65	< 0.2					
WBL22E 6+00N	203	10	570	2	50	< 0.2					
WBL22E 7+00N	201	< 5	160	< 1	48	< 0.2					
WBL22E 8+00N	201	< 5	100	1	54	< 0.2					
WBL22E 1+00S	201	55	280	4	78	< 0.2					
WBL22E 2+00S	201	35	680	4	72	< 0.2					
WBL22E 3+00S	201	10	180	4	73	< 0.2					
WBL22E 4+00S	201	135	580	4	85	< 0.2					
WBL22E 5+00S	201	< 5	230	2	105	0.2					
WBL24E 0+00N	201	35	1520	4	92	0.5					
WBL24E 1+00N	203	120	1950	2	61	< 0.2					
WBL24E 2+00N	203	160	950	1	56	< 0.2					
WBL24E 3+00N	203	45	500	2	75	< 0.2					
WBL24E 4+00N	201	10	300	4	57	< 0.2					
WBL24E 5+00N	201	25	320	1	65	< 0.2					
WBL24E 5+50N	201	< 5	160	2	63	< 0.2					
WBL24E 6+00N	201	55	480	2	64	< 0.2					
WBL24E 6+50N	201	10	1750	2	110	< 0.2					
WBL24E 7+00N	203	10	460	3	65	< 0.2					
WBL24E 7+50N	201	50	620	< 1	40	< 0.2					

CERTIFICATION :

Jan Bichler



Chemex Labs Ltd.

Analytical Chemists * Geochemists * Registered Assayers

212 BROOKSBANK AVE., NORTH VANCOUVER,
BRITISH COLUMBIA, CANADA V7J-2C1

PHONE (604) 984-0221

To: INTEREX DEVELOPMENT CORP.

1003 - 470 GRANVILLE ST.
VANCOUVER, BC
V6C 1V5

Project: WHITE BEAR

Comments: ATTN: W THOMPSON

**Page No. 3

Tot. Pages: 3

Date: 10-JUL-89

Invoice #: I-8919428

P.O. #: NONE

CERTIFICATE OF ANALYSIS A8919428

SAMPLE DESCRIPTION	PREP CODE	Au ppb FA+AA	Cu ppm	Pb ppm	Zn ppm	Ag ppm Aqua R					
WBL24E 8+00N	201	5	570	4	75	< 0.2					
WBL24E 1+00S	203	145	3500	2	68	< 6.6					
WBL24E 2+00S	203	180	4900	6	76	< 0.2					
WBL24E 3+00S	217	135	1680	< 1	147	< 0.2					
WBL24E 4+00S	203	< 5	390	2	70	< 0.2					
WBL24E 5+00S	201	< 5	240	4	90	0.3					

WHITE BEAR

CERTIFICATION: Hart Bichler



Chemex Labs Ltd.

Analytical Chemists • Geochemists • Registered Assayers

212 BROOKSBANK AVE., NORTH VANCOUVER,
BRITISH COLUMBIA, CANADA V7J-2C1

PHONE (604) 984-0221

To: INTEREX DEVELOPMENT CORP.

**

1003 - 470 GRANVILLE ST.
VANCOUVER, BC
V6C 1V5

*** INVOICE NUMBER 18920400 ***

BILLING INFORMATION

Date : 14-JUL-89
Project : WHITE BEAR
P.O. # : NONE
Account : DPV

Comments:

Billing : For analysis performed on
Certificate A8920400

Terms : Net payment in 30 Days
1.5% per month (18% per annum)
charged on overdue accounts.

Please remit payments to:

CHEMEX LABS LTD.
212 Brooksbank Ave.,
North Vancouver, B.C.
Canada V7J-2C1

NOTE: New charges for FAXING of data
Effective MAY 22/89, As follows:
\$0.50/data page inside N. America
\$2.00/data page outside N. America

CHEMEX CODE	ANALYSIS DESCRIPTION	SAMPLES ANALYZED	UNIT PRICE	AMOUNT
301	- Cu %	4	6.50	26.00
Sample preparation and other charges :				
214	- Received as pulp	4	0.00	0.00
Total Cost \$				26.00
TOTAL PAYABLE \$				26.00



Chemex Labs Ltd.

Analytical Chemists • Geochemists • Registered Assayers
212 BROOKSBANK AVE., NORTH VANCOUVER,
BRITISH COLUMBIA, CANADA V7J-2C1
PHONE (604) 984-0221

To: INTEREX DEVELOPMENT CORP.

1003 - 470 GRANVILLE ST.
VANCOUVER, BC
V6C 1V5

A8920400

Comments: ATTN: W THOMPSON

CERTIFICATE A8920400

INTEREX DEVELOPMENT CORP.
PROJECT : WHITE BEAR
P O # : NONE

Samples submitted to our lab in Vancouver, BC.
This report was printed on 14-JUL-89.

ANALYTICAL PROCEDURES

CHEMEX CODE	NUMBER SAMPLES	DESCRIPTION	METHOD	DETECTION LIMIT	UPPER LIMIT
301	4	Cu %: HClO4-HNO3 digestion	AAS	0.01	100.0

SAMPLE PREPARATION

CHEMEX CODE	NUMBER SAMPLES	DESCRIPTION
214	4	Received sample as pulp



Chemex Labs Ltd.

Analytical Chemists * Geochemists * Registered Assayers

212 BROOKSBANK AVE. NORTH VANCOUVER,
BRITISH COLUMBIA, CANADA V7J-2C1

PHONE (604) 984-0221

To : INTEREX DEVELOPMENT CORP.

1003 - 470 GRANVILLE ST.
VANCOUVER, BC
V6C 1V5

Project : WHITE BEAR
Comments: ATTN: W THOMPSON

**Page No. : 1
Tot. Pages: 1
Date : 14-JUL-89
Invoice # : I-8920400
P.O. # : NONE

CERTIFICATE OF ANALYSIS A8920400

SAMPLE DESCRIPTION	PREP CODE	Cu %									
WB 2+00N 22+60E	214 --	1.48									
WB 2+50N 22+60E	214 --	0.84									
21+00E 4N	214 --	1.17									
0+40N 20+80E	214 --	3.07									

CERTIFICATION : *W. Benvenuti*
B.C. CERTIFIED 1988

APPENDIX 2

CERTIFICATION OF AUTHOR

CERTIFICATION

I, William H. Thompson, of 12534 - 99A Avenue, Surrey, B.C. V6V 2R5, telephone (604) 588-0374, do certify that:

- 1) I am an Associate member of the Geological Association of Canada.
- 2) I attended the Universities of Victoria and Saskatchewan where I studied the geological sciences for 4 years.
- 3) I have been employed on a full time basis, and as a consultant in the fields of mining and mineral exploration as a geologist since 1972. Major companies that I have been employed by include U.S. Steel, Asarco, Canadian Superior Explorations, and DeKalb Mining Corp.
- 4) This report is based on personal examinations on the White Bear Claims.
- 5) I have free trading shares in United Cambridge Mines.
- 6) I expect no compensation other than expenses and standard industry wages for the work I have done and will do on the White Bear Claims.

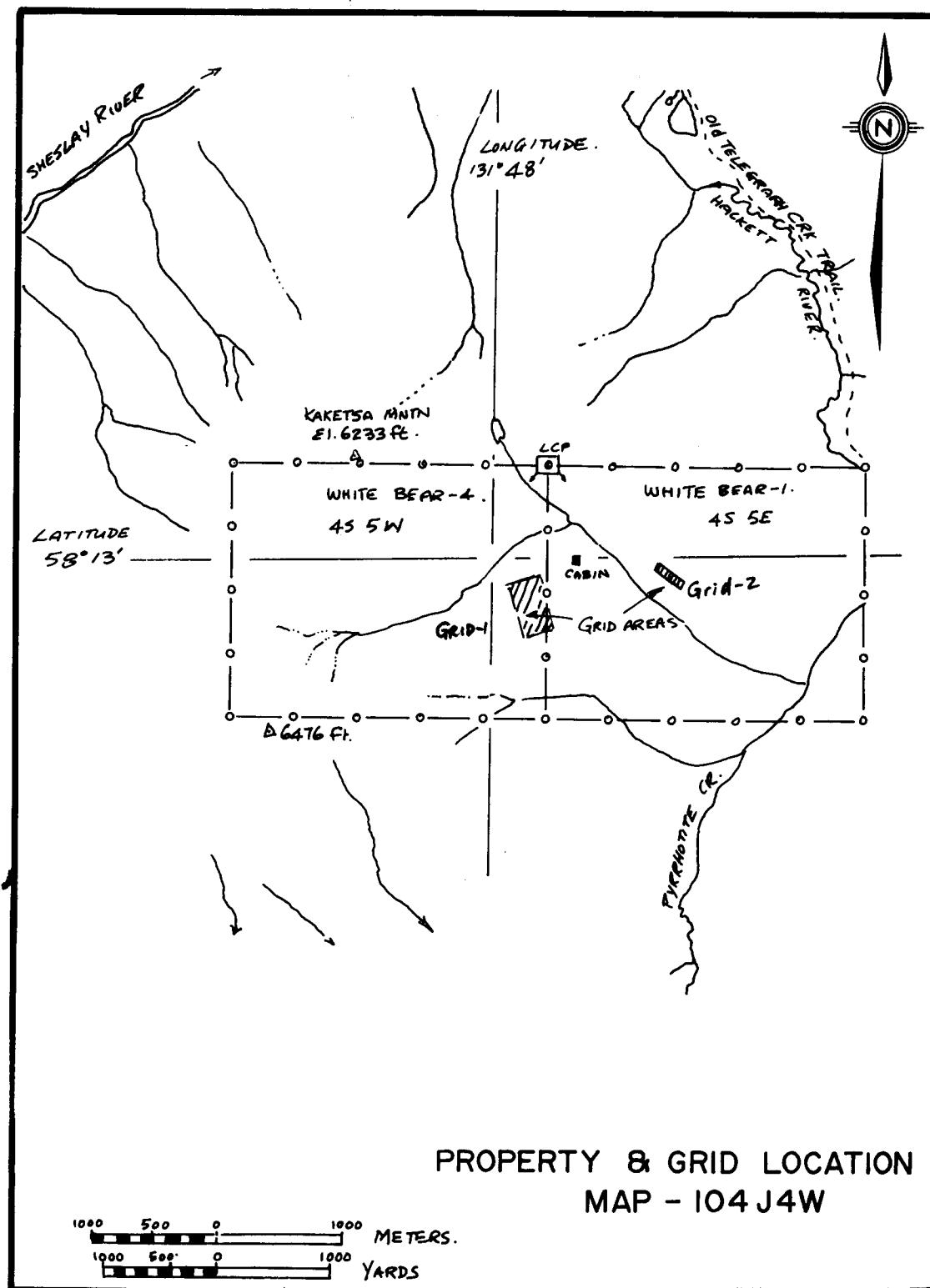
DATED AT 12534 - 99A Avenue, Surrey, B.C. V6V 2R5 this 17th day of July 1989.



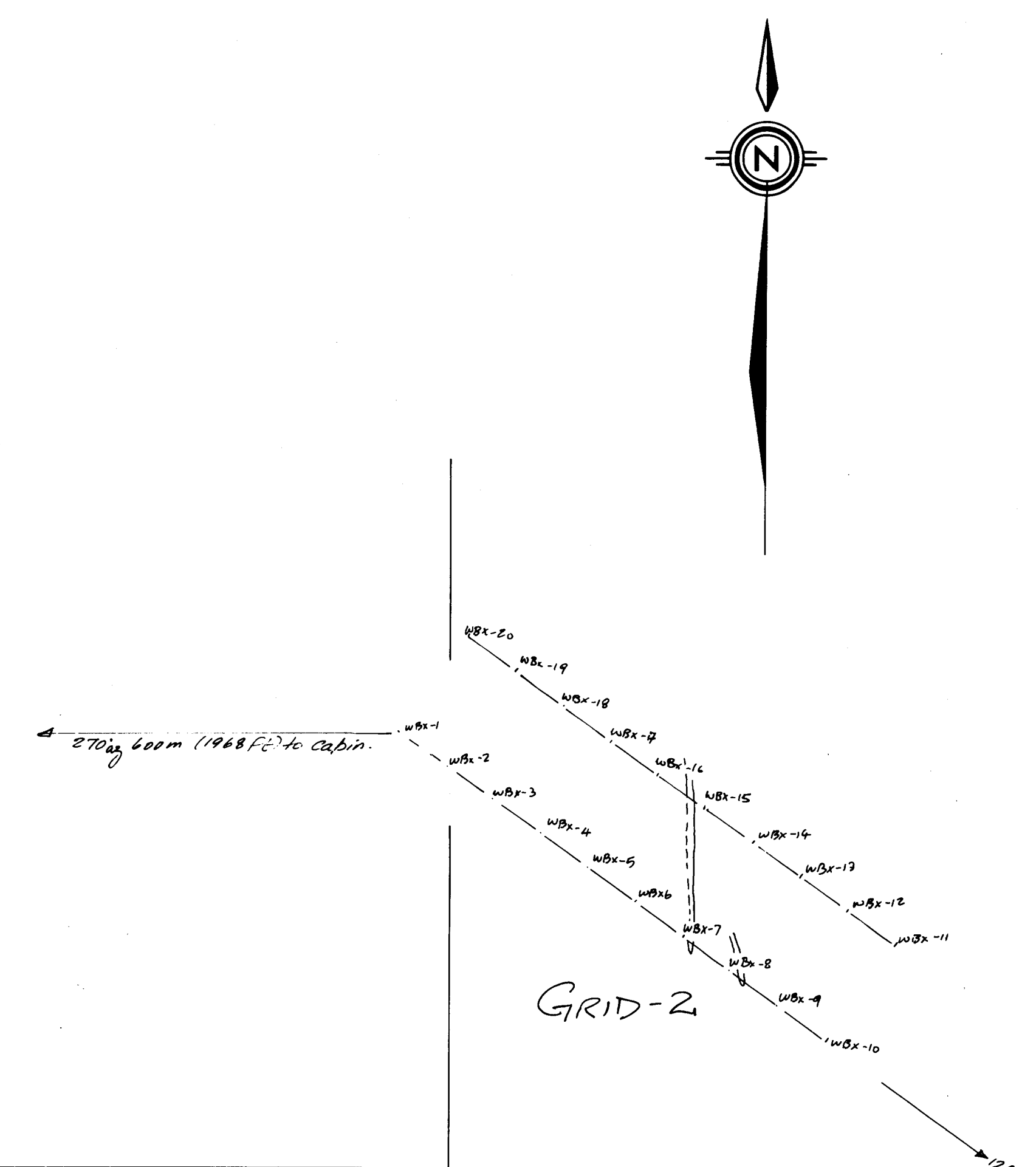
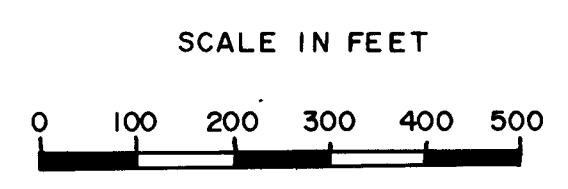
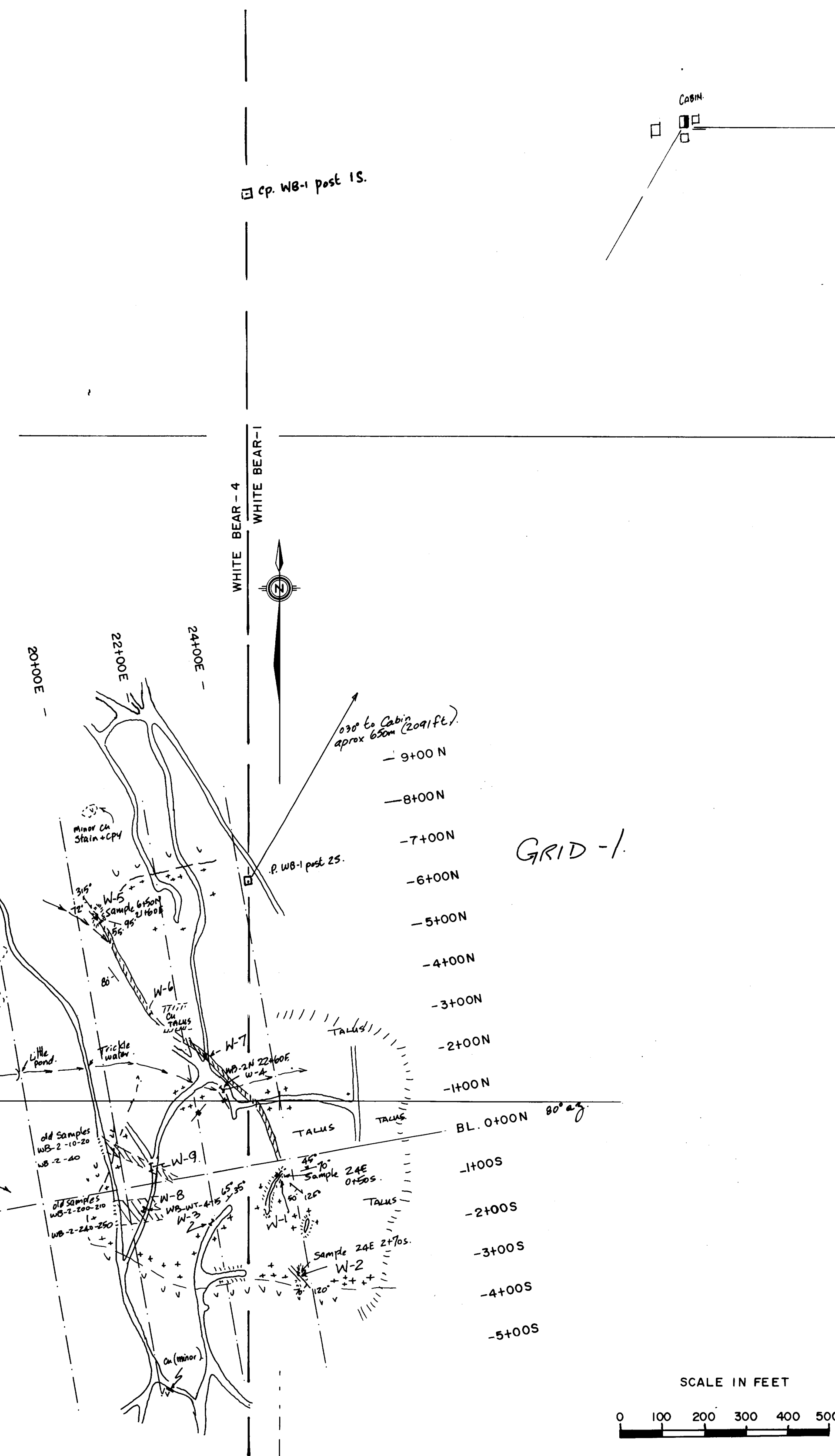
W.H. THOMPSON

REFERENCES

1. Sillitoe R.H. Mineralism Deposita 1979 pp. 14: 161-174
Some Thoughts on Gold-Rich Porphyry Copper Deposits
2. Panteleyes A. Geoscience Canada Vol.13 No. 2
Ore Deposits #10 A Canadian Cordilleran Model for Epithermal
Gold-Silver Deposits
3. Holland Stuart S. B.C. Dept. of Mines Bull 48 1976
Landforms of British Columbia a Physiographic Outline
4. Gabrielse H. Dept. of Mines Energy and Resources 1971
Open File: 707
5. (a) Southern J.G. Geological Survey of Canada 1958 - 1960
Map: 1262A Geology Tulsequah and Juneau.
(NTS: 104K, 104L)
- (b) Souther J.G. G.Sc. Memoir 302 1971 Geology and Mineral
Deposits of the Tulsequah Map Area.
6. Lisle T.E. B.C. Ministry of Energy Mines and Petroleum
Resources Assessment Report on the Mood Claims 1986.
7. Lisle T.E. A Review of the Gold and Copper Potential of the
Sheslay Area Atlin Mining Division NTS 104J/4E. July 29, 1986.
8. Boyle R.W. Energy Mines and Resources Canada
The Geochemistry of Gold and its Deposits Bull 280
9. Hutchinson R.W. & Hodder R.W. CIM Bull Feb 1972
(a) Possible Tectonic and Metallogenic Relationships
Between Porphyry Copper and Massive Sulphide Deposits.
- (b) Structural Features of Prophyry Copper Deposits and the
Tectonic Evolution of Continents.
10. Ham L.C. A Heritage Overview and Detailed Heritage Resource
Impact Assessment of the Moon Property, Hackett River North-
western British Columbia Aug. 1988.
11. B.C. Dept. of Mines Assessment Reports:
No. 2805, 3514, 3515, 3516, 2512, 2061, 3925, 648, 8882, 2061.
12. Thompson W. Geochemical Survey of the Moon 1-4 Claims Dec.
1988.
13. Thompson W. Prospecting Report on the White Bear 1 & 4
Mineral Claims June 1989.



PROPERTY & GRID LOCATION MAP - 104J4W



LEGEND

CREEK	
ROAD (DRILL)	
CLAIM POST - LINE	
TRENCH	
SAMPLE SITE - SOIL / ROCK	
BOTTOM OF TALUS SLOPE	
VEIN	
INTRUSIVE: MONZONITE - DIORITE	
VOLCANIC: ANDESITE	

GEOLOGICAL BRANCH
ASSESSMENT REPORT

18,927

WHITE BEAR-1 and 4 CLAIMS
GEOLOGY / SAMPLE
LOCATION MAP
FOR
INTEREX DEVELOPMENT CORP. & UNITED CAMBRIDGE MINES LTD