

APPENDIX III

Aerodat Limited - Report and Maps,
CHUCHI Project

FILMED

19024

PART 3

OF 3

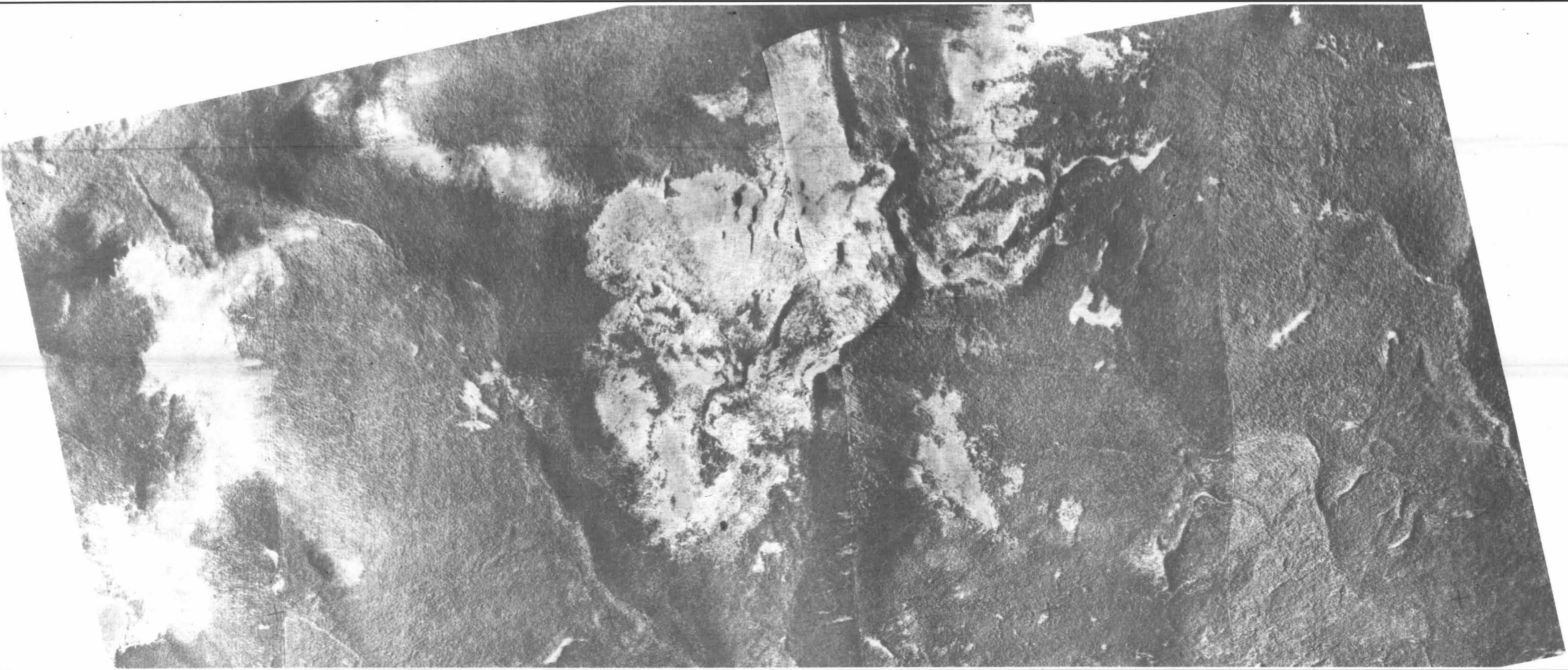
 **AERODAT LIMITED**

3883 NASHUA DRIVE,
MISSISSAUGA, ONTARIO L4V 1R3
TELEPHONE: (416) 671-2446

REPORT AND MAPS
BP RESOURCES CANADA LIMITED
CHUCHI PROPERTY
BRITISH COLUMBIA

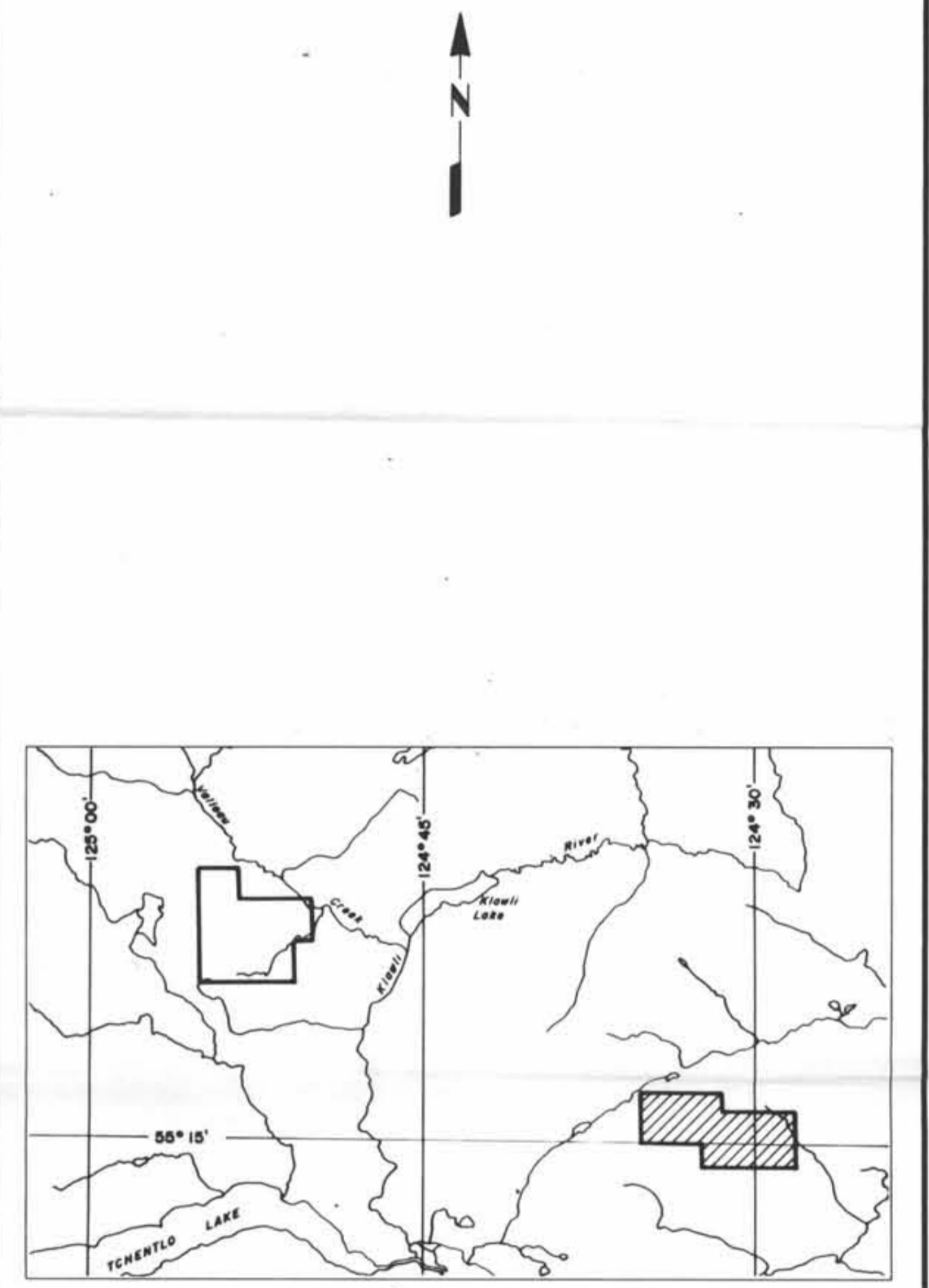
J8943

Airborne Geophysics



GEOLOGICAL BRANCH
ASSESSMENT REPORT

19,024
Part 3
#3



BP RESOURCES CANADA LTD.

BASE MAP

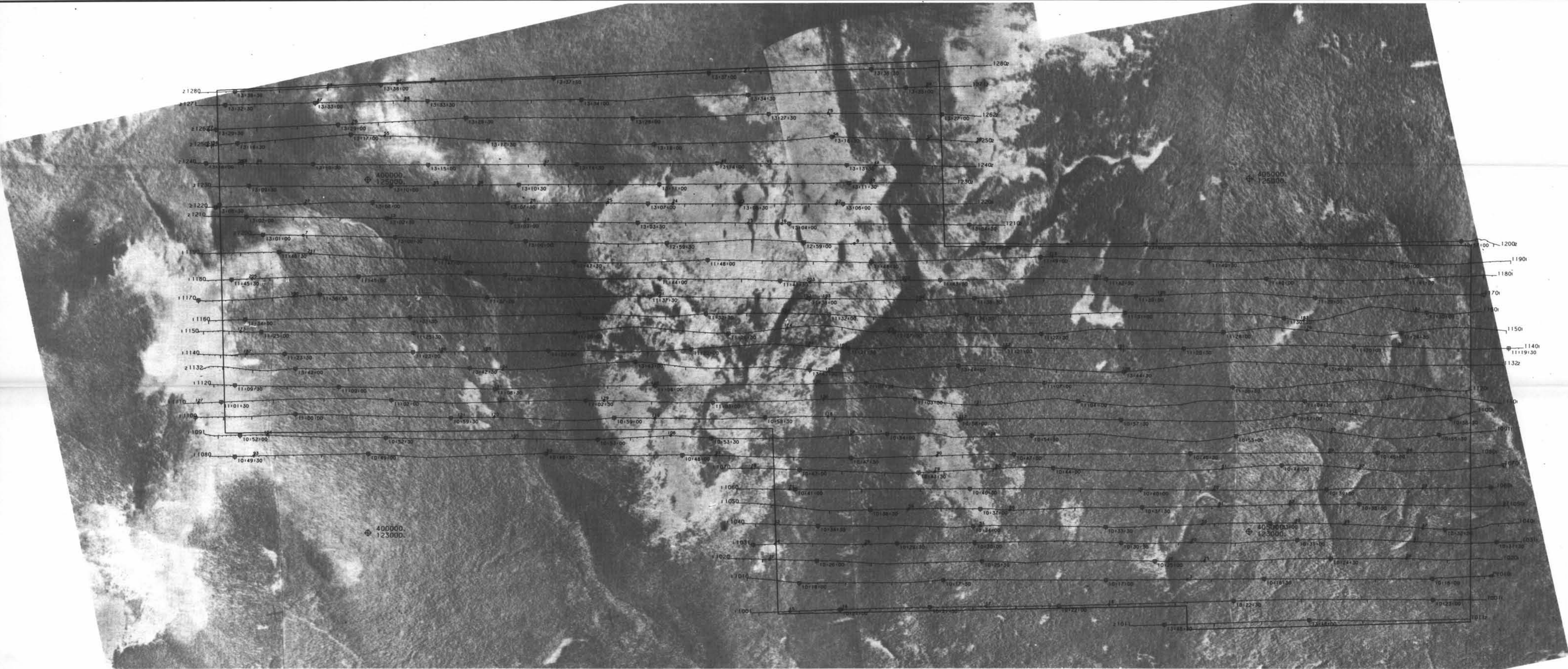
CHUCHI LAKE
B.C.

SCALE 1:10,000

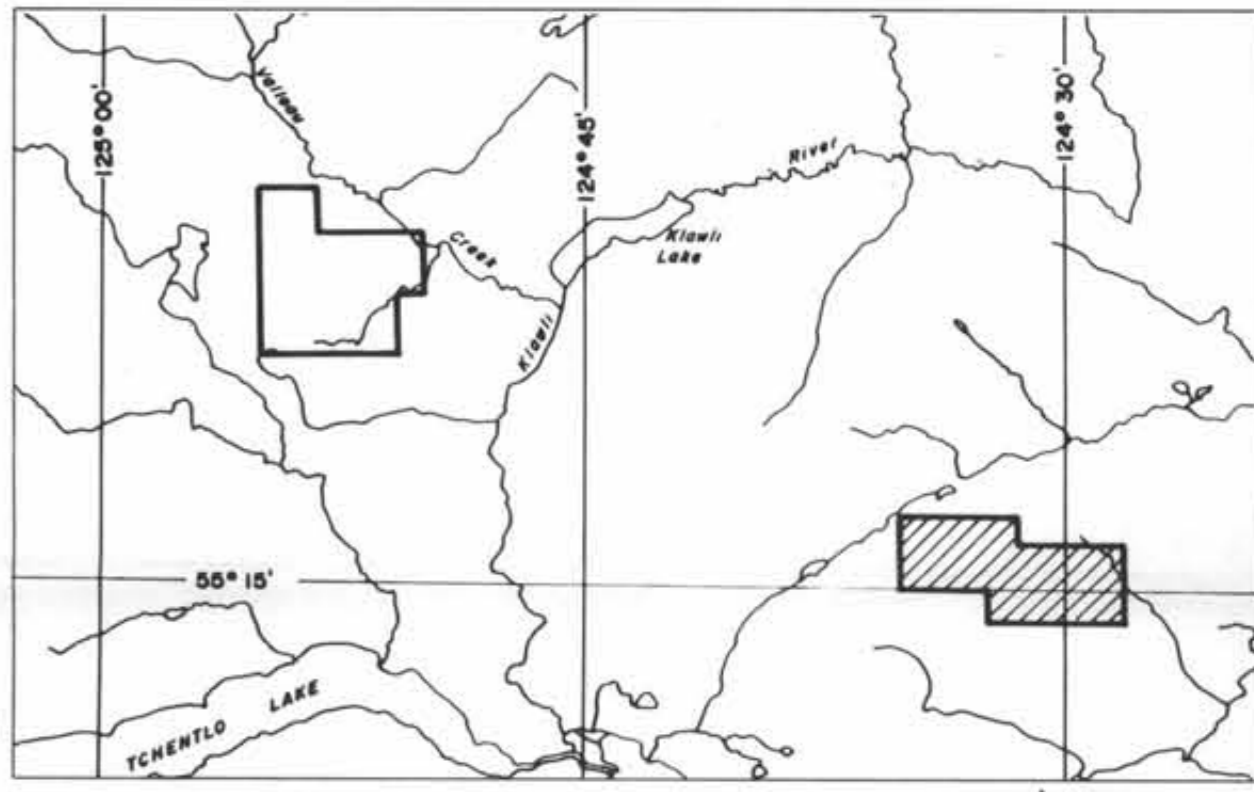
0 330 660 1320 2640 Feet
0 100 200 500 1000 Metres

	DATE: JUN 89
	NTS No: 93-0
	MAP No: 1

J8943



Navigation and recovery using Motorola Mini-Ranger (MRS III) radar navigation system.
Average terrain clearance 60m
Average line spacing 100m

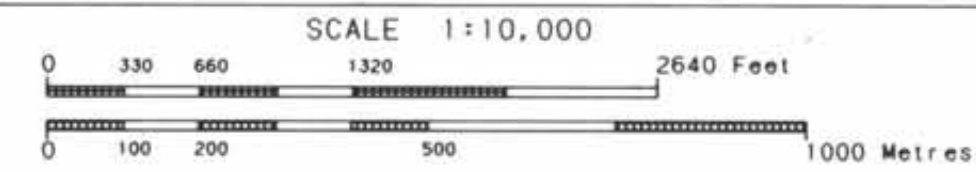


GEOLOGICAL BRANCH
ASSESSMENT REPORT
19,024
part 3 of 3

BP RESOURCES CANADA LTD.

FLIGHT PATH

CHUCHI LAKE
B. C.



DATE: JUN 89
NTS No: 93-0
MAP No: 2 8943



Magnetics

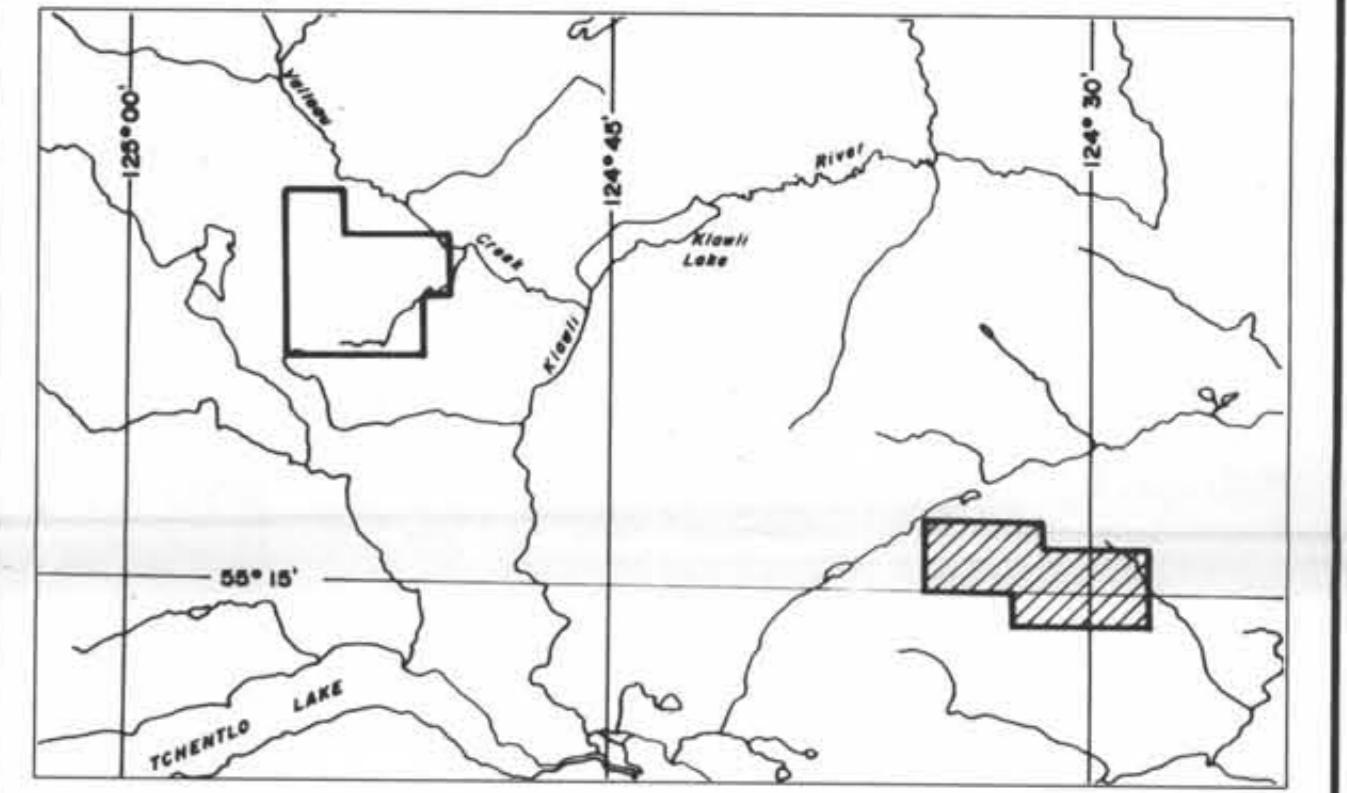
Total Field Magnetic Intensity
Contours in nT.
Cesium high sensitivity
magnetometer.
Sensor elevation 45m

Flight Path

Navigation and recovery using
Motorola Mini-Ranger (MRS III)
radar navigation system.
Average terrain clearance 60m
Average line spacing 100m

Map contours are multiples of
those listed below

- 5 nT
- 25 nT
- 100 nT
- 500 nT
- 2000 nT



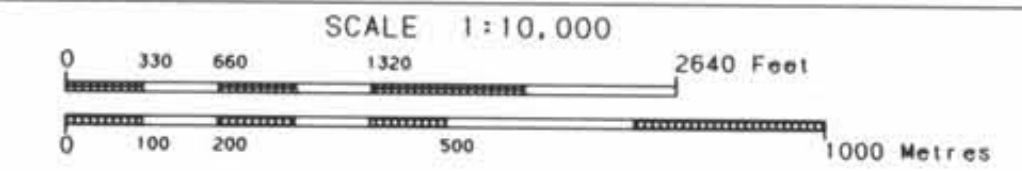
GEOLOGICAL BRANCH
 ASSESSMENT REPORT
19,024
Part 3 of 3

BP RESOURCES CANADA LTD.

TOTAL FIELD MAGNETIC CONTOURS

CHUCHI LAKE

B.C.



DATE: JUN 89
 NTS No: 93-0
 MAP No: 3 18943



Vertical Gradient

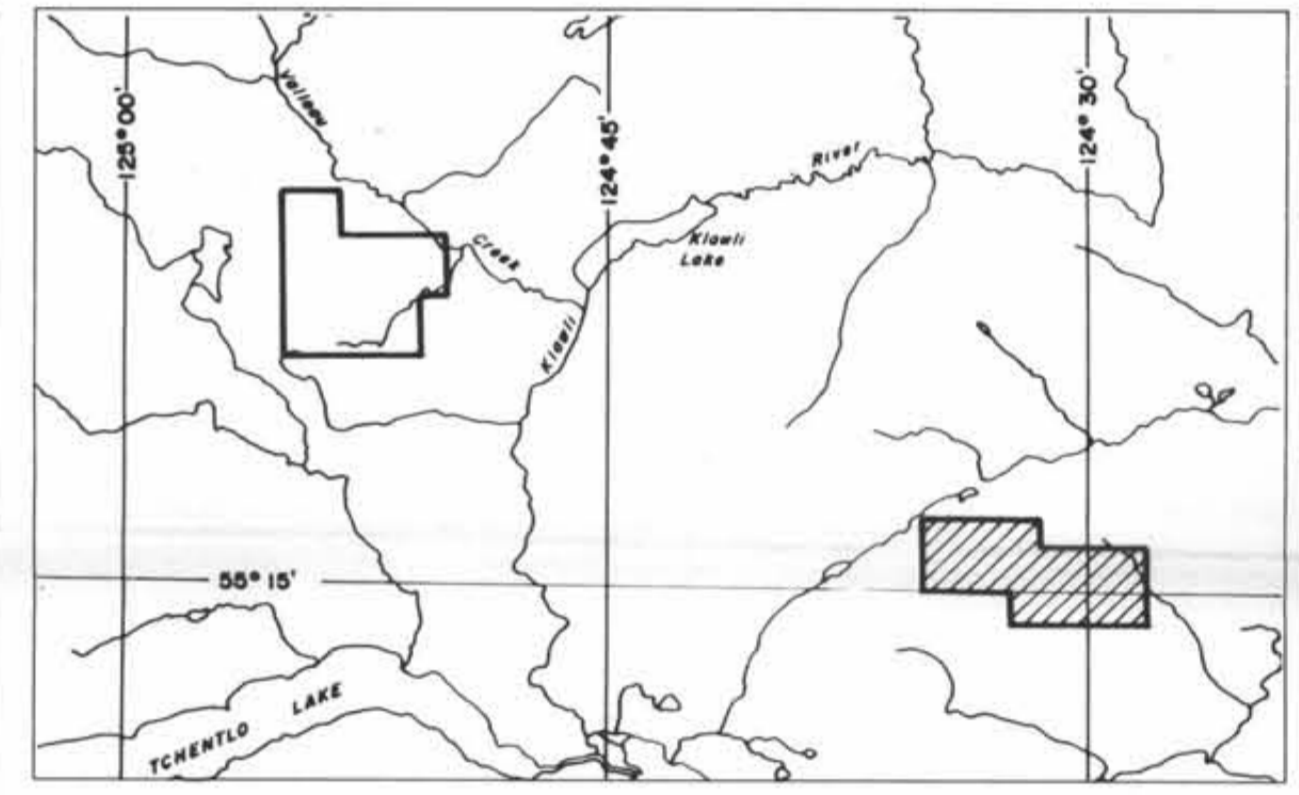
Vertical Magnetic Gradient calculated from the total field magnetic intensity in nT/m.
Cesium high sensitivity magnetometer.
Sensor elevation 45m

Flight Path

Navigation and recovery using Motorola Mini-Ranger (MRS III) radar navigation system.
Average terrain clearance 60m
Average line spacing 100m

Map contours are multiples of those listed below

- .50 nT/m
- 2.50 nT/m
- 10 nT/m
- 50 nT/m
- 250 nT/m

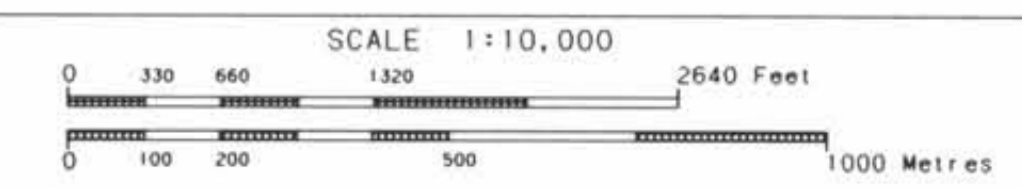


GEOLOGICAL BRANCH
 ASSESSMENT REPORT
19,024
 Part 3 of 3

BP RESOURCES CANADA LTD.

CALCULATED VERTICAL MAGNETIC GRADIENT

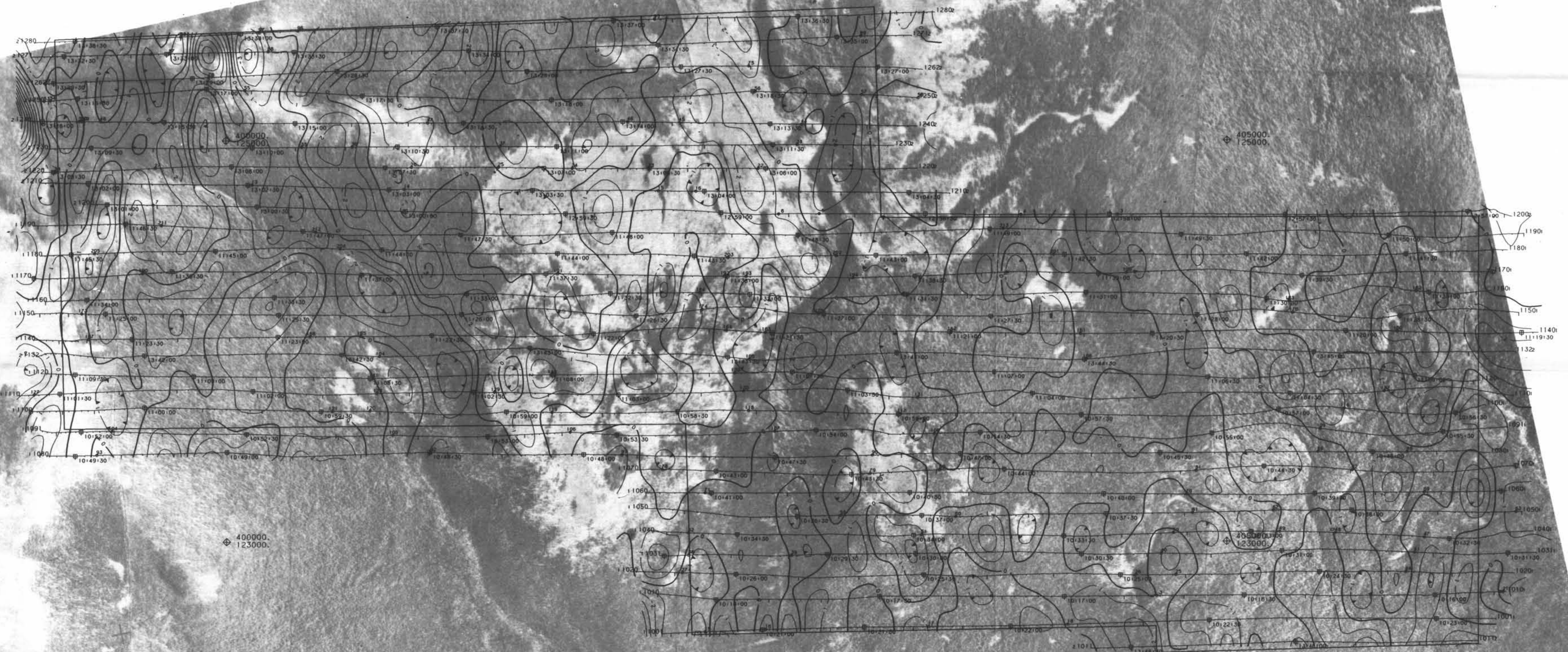
CHUCHI LAKE
B.C.



AERODAT LIMITED

DATE: JUN 89
 NTS No: 93-0
 MAP No: 4

J8943



Part 3 of 3
 GEOLOGICAL BRANCH
 ASSESSMENT REPORT
 19,024

VLF-EM	Flight Path								
VLF-EM Total Field Intensity in percent. Station: NSS Annapolis, Maryland 21.4 kHz Sensor elevation 45m	Navigation and recovery using Motorola Mini-Ranger (MRS III) radar navigation system. Average terrain clearance 60m Average line spacing 100m								
Map contours are multiples of those listed below									
<table border="0" style="width: 100%;"> <tr> <td style="width: 20px; border-bottom: 1px solid black;"></td> <td>2 x</td> </tr> <tr> <td style="width: 20px; border-bottom: 3px double black;"></td> <td>10 x</td> </tr> <tr> <td style="width: 20px; border-bottom: 5px double black;"></td> <td>50 x</td> </tr> <tr> <td style="width: 20px; border-bottom: 10px double black;"></td> <td>100 x</td> </tr> </table>			2 x		10 x		50 x		100 x
	2 x								
	10 x								
	50 x								
	100 x								

BP RESOURCES CANADA LTD.	
VLF-EM TOTAL FIELD CONTOURS	
CHUCHI LAKE	
B. C.	
SCALE 1:10,000 	
	DATE: JUN 89 NTS No: 93-0 MAP No: 5
8943	