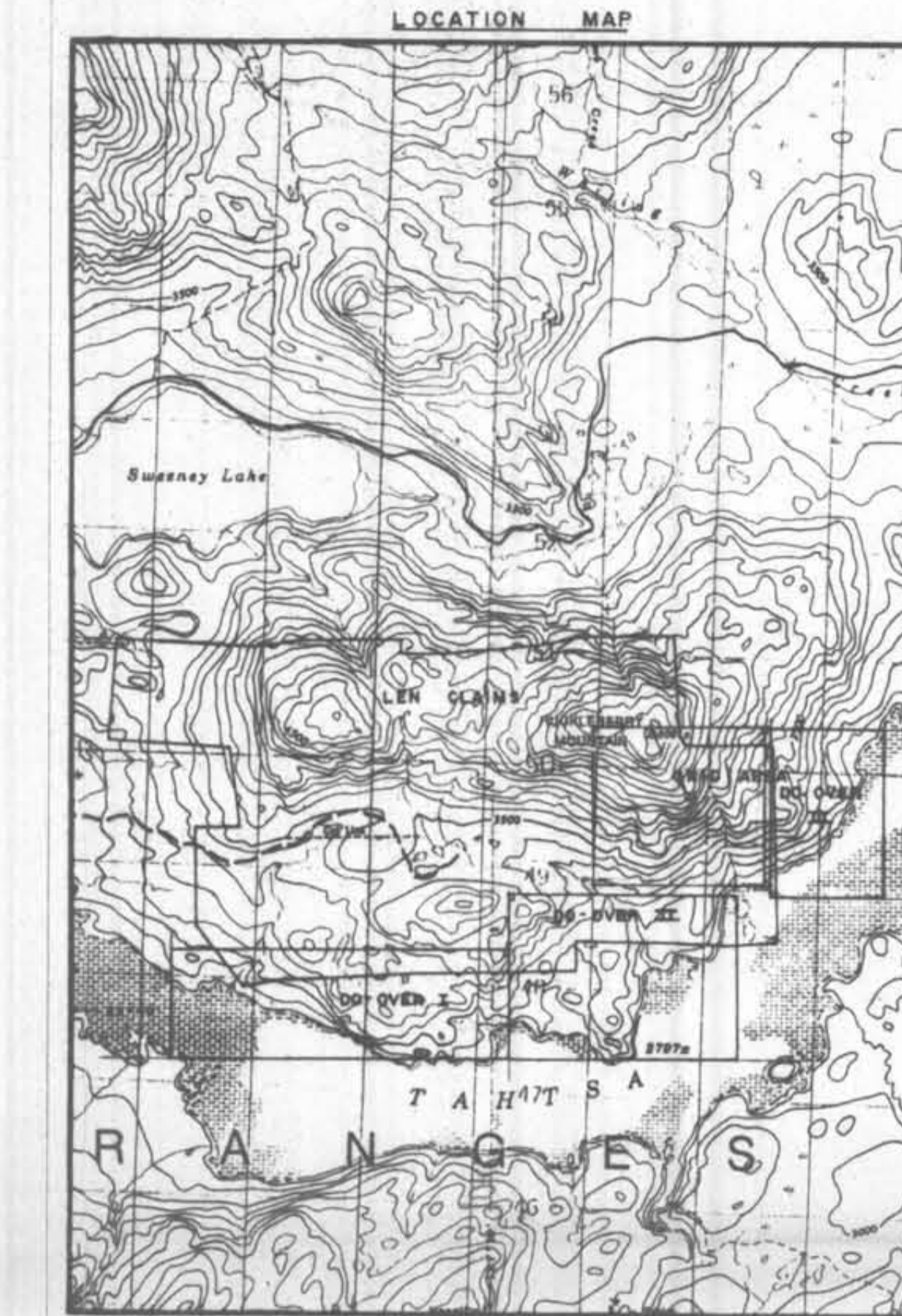


19087

ASSESSMENT REPORT
GEOLOGY, GEOCHEMISTRY, AND GEOPHYSICS
HUCKLEBERRY PROPERTY
LEN EAST GROUP, LEN WEST GROUP
OMINECA MINING DIVISION
N.T.S. 93 E/11E

NORANDA EXPLORATION COMPANY, LIMITED
(NO PERSONAL LIABILITY)
Chris T. Roney, Field Geologist
Del Myers, Senior Project Geologist
Lyndon Bradish, Division Geophysicist
AUGUST, 1989

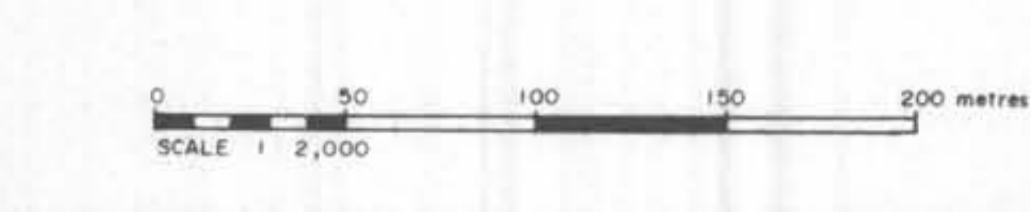


LEGEND

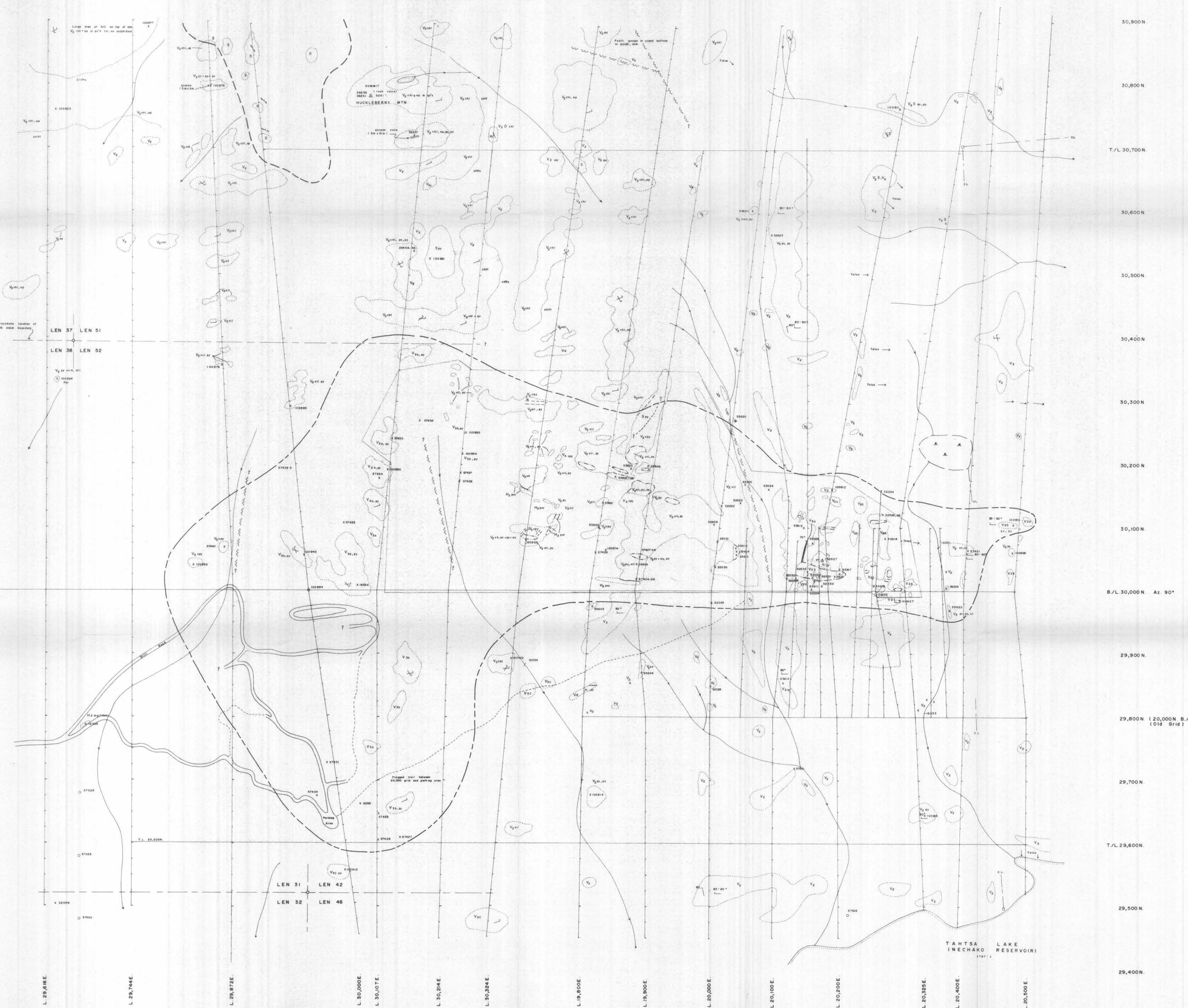
- ROCK TYPES**
- H2 Intermediate (Andesitic) Hypabyssal Intrusives
 - H2a Amphibolitic medium grained quartz-feldspar-bio dykes (dioritic)
 - H2b Feldspar-bio-porphry dykes
 - S Argillite, Silstone + Mudstone Tuffs; very fine to fine grained, gray to black.
 - S1 shale or argillite
 - V2 Andesite; feldspar porphyritic andesite tuff; argillite tuff, breccia and flows.
 - V2a more siliceous-hornfelsed or altered andesite
 - V2b basalt to argillite; very fine grained, massive, very fractured.
 - V2c very light gray/light tan
 - V2d medium gray/tan
 - V2e dark gray
 - QV quartz vein
 - PY pyrite
 - AN arsenopyrite
 - GR graphite
 - ML muscovite
 - BS basalt
 - EP epidote
- SYMBOLS**
- o outcrop (large, small)
 - geological contact (observed, inferred)
 - creek (mill sample)
 - rock sample location (outcrop, flow)
 - reocn soil sample
 - jointing/fracturing
 - bedding
 - cleavage
 - claim line
 - fault (inferred)
 - swamp
 - trail
 - drill road
 - pyrite zone
 - arsenopyrite zone
 - talus slope & direction
 - Outline of demt mapping Area (1:500)

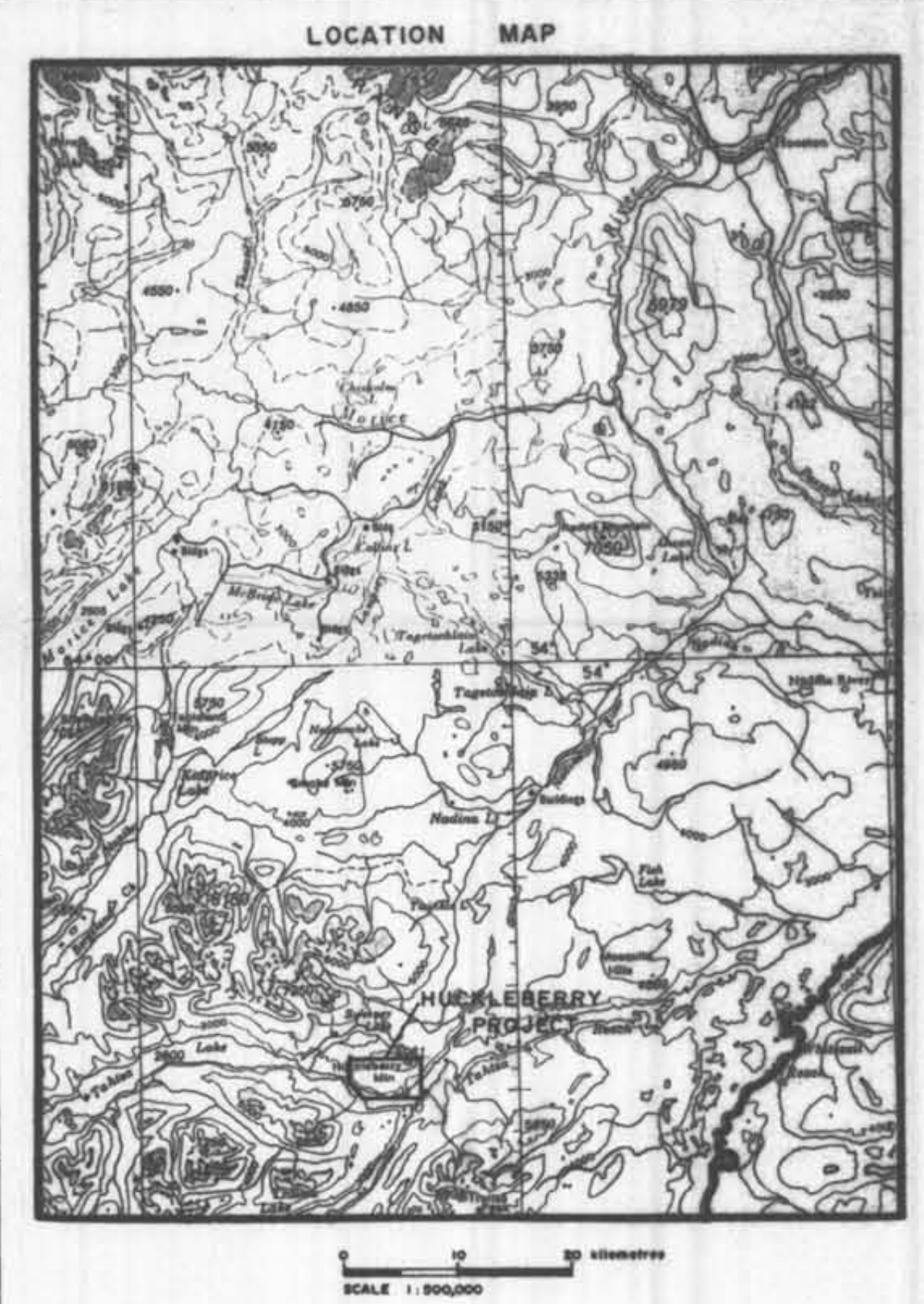
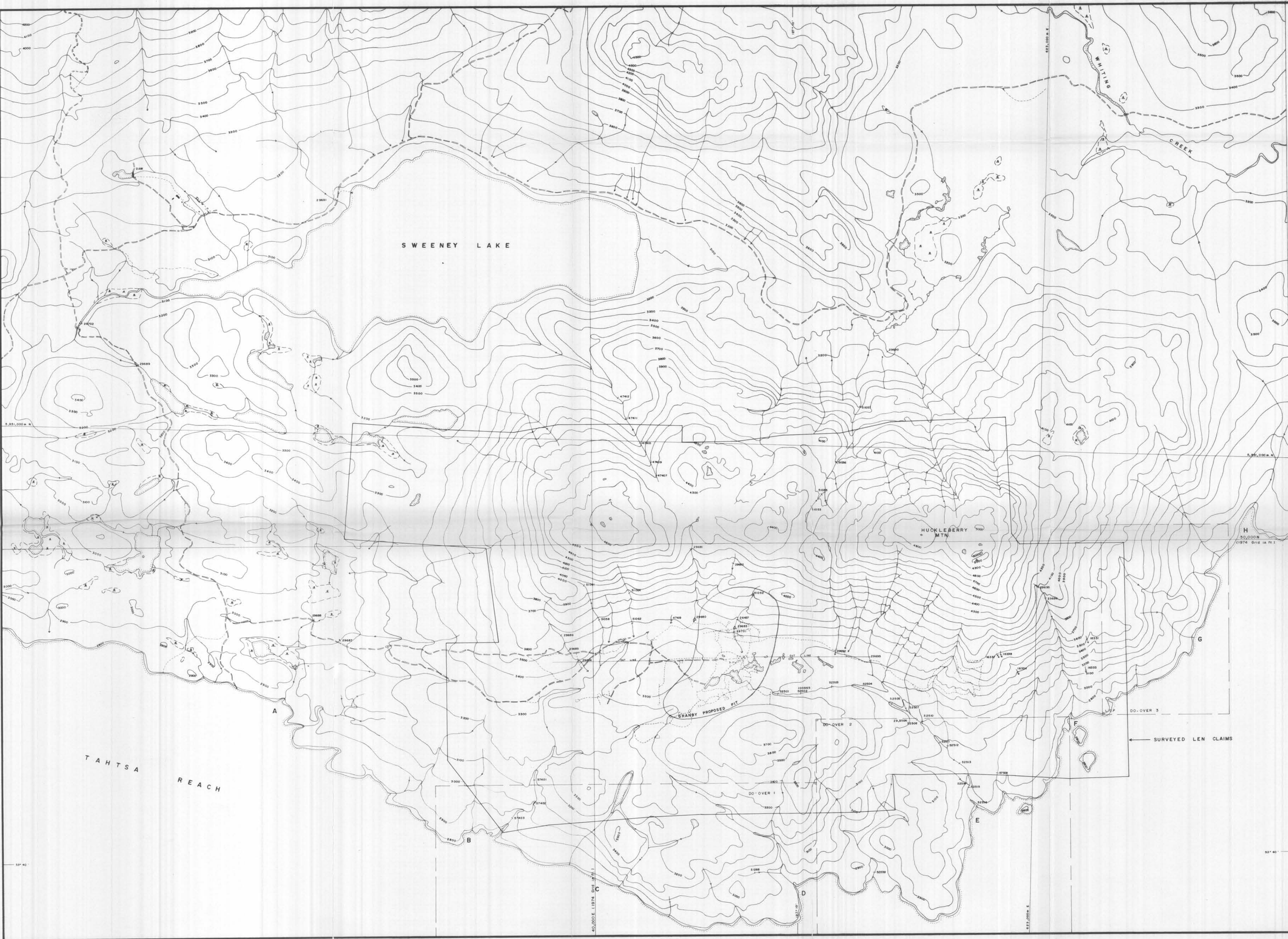
GEOLOGICAL BRANCH
ASSESSMENT REPORT

19,087



REVISED	HUCKLEBERRY PROJECT	
	EAST GRID	
	GEOLOGY MAP	
PROJ. No. 241	SURVEY BY: C.T.R., A.A.T.	DATE: July, 1989
N.T.S. 93/11E	DRAWN BY: S.A.B.	SCALE: 1:2,000
DWG. No.	NORANDA EXPLORATION	
FIG. 5	OFFICE: PRINCE GEORGE, B.C.	





LEGEND

- ⊗ Silt Sample Location
- △ Pan (Heavy Mineral) Sample Location
- A Reference Location

GEOLOGICAL BRANCH
ASSESSMENT REPORT

19,087

0 500 1000 meters
SCALE 1:10,000

REVISED	HUCKLEBERRY PROJECT	
DEM: Aug. 1989	SILT AND PAN GEOCHEM SURVEY	
PROJ. No. 241	SURVEY BY: J.R., T.F., D.M.	DATE: JAN., 1988
N.T.S. 93 E/11 E	DRAWN BY: S.H.B.	SCALE: 1:10,000
DWG. No.	NORANDA EXPLORATION	
FIG. 6	OFFICE: PRINCE GEORGE, B.C.	



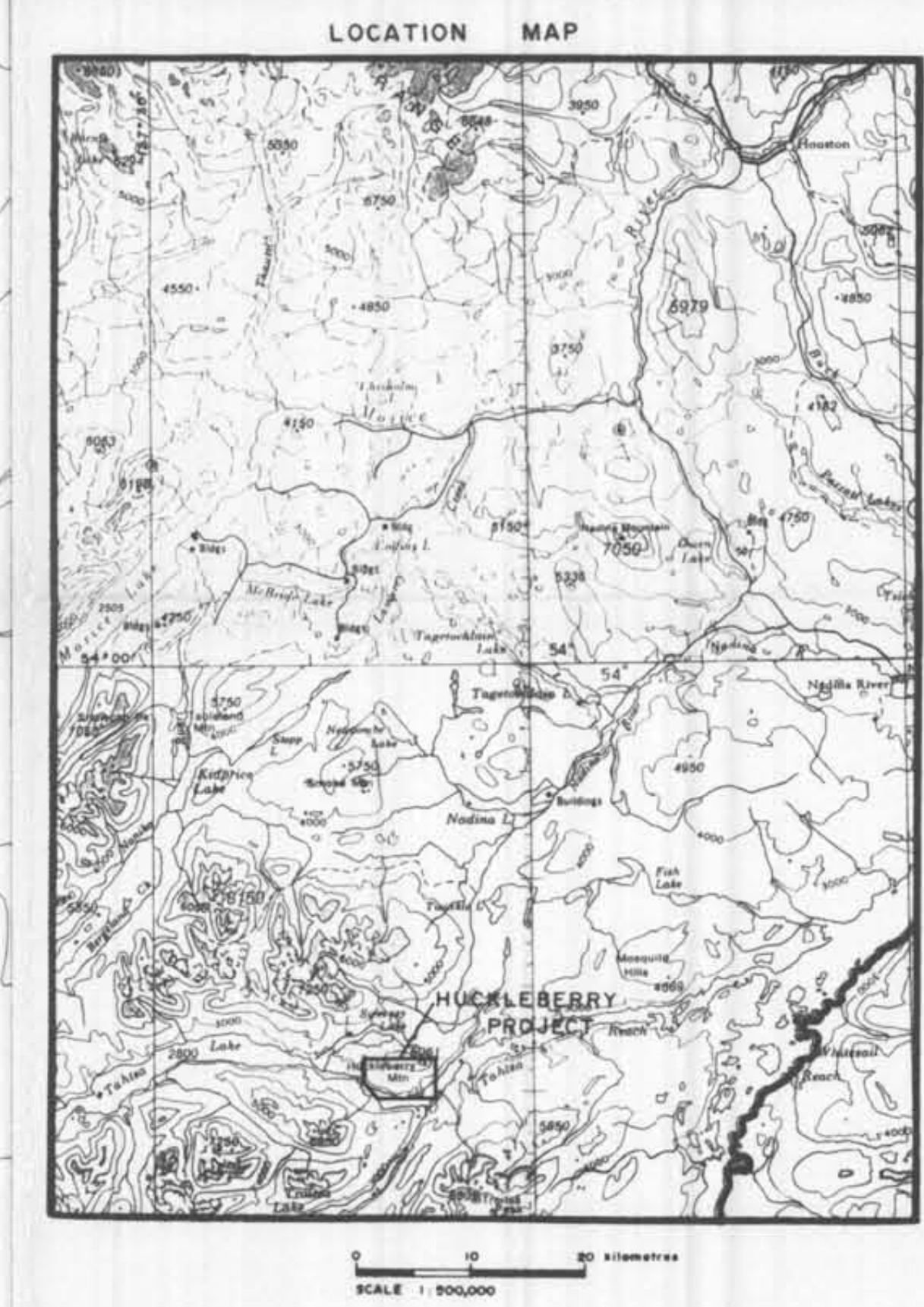
LEGEND

- Soil Sample Location (Recon.)
- x Rock Sample Location
- ⊙ Float Sample Location

**GEOLOGICAL BRANCH
ASSESSMENT REPORT**
19,087

SCALE 1:10,000

REVISED	HUCKLEBERRY PROJECT	
	SOIL GRID AND RECON. SAMPLE LOCATIONS	
PROJ. No. 241	SURVEY BY C. R.	DATE JULY, 1989
NTS. 93E/11	DRAWN BY S. R. B.	SCALE 1:10,000
DWG. No.	NORANDA EXPLORATION	
FIG. 7	OFFICE PRINCE GEORGE, B.C.	



LEGEND

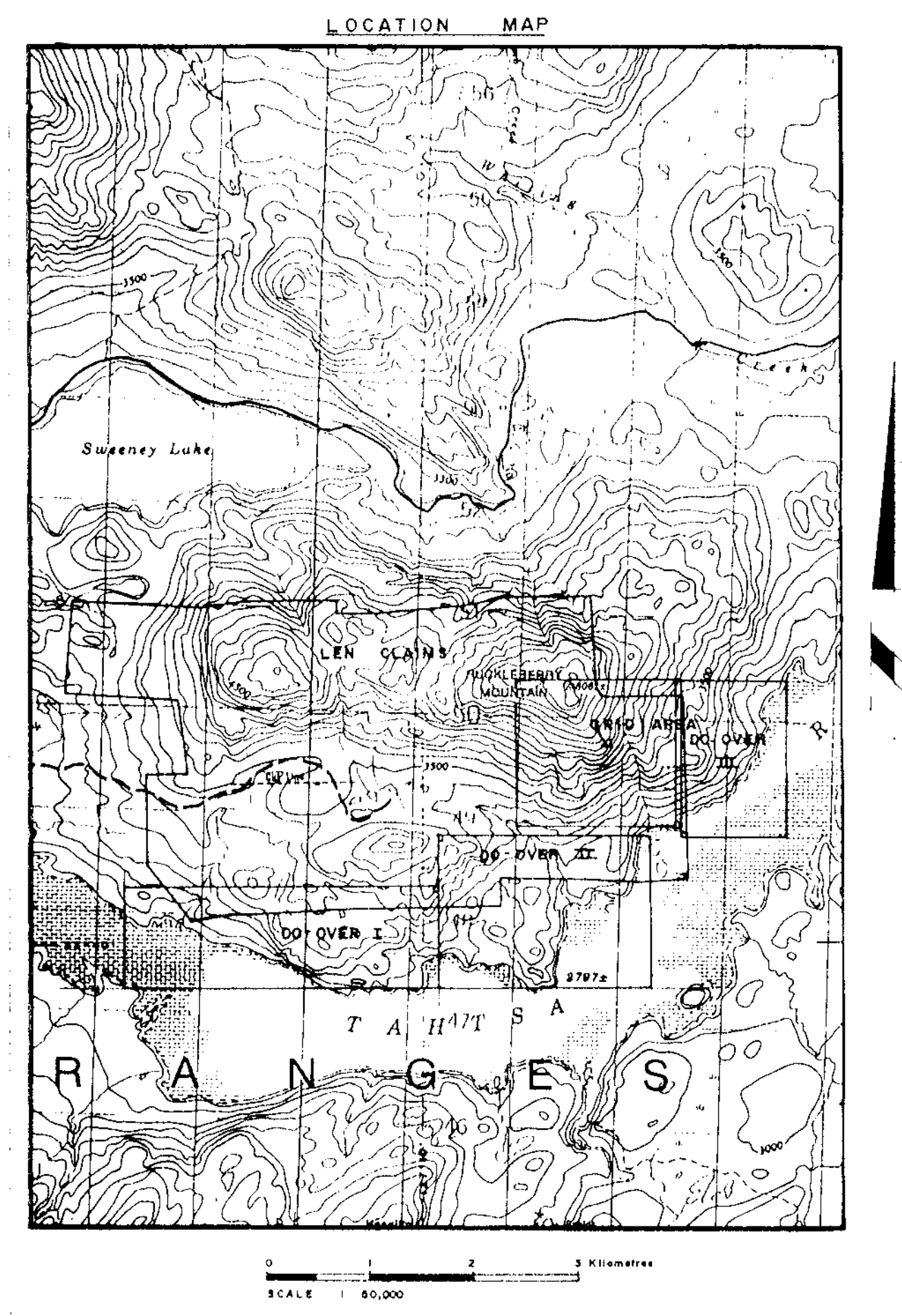
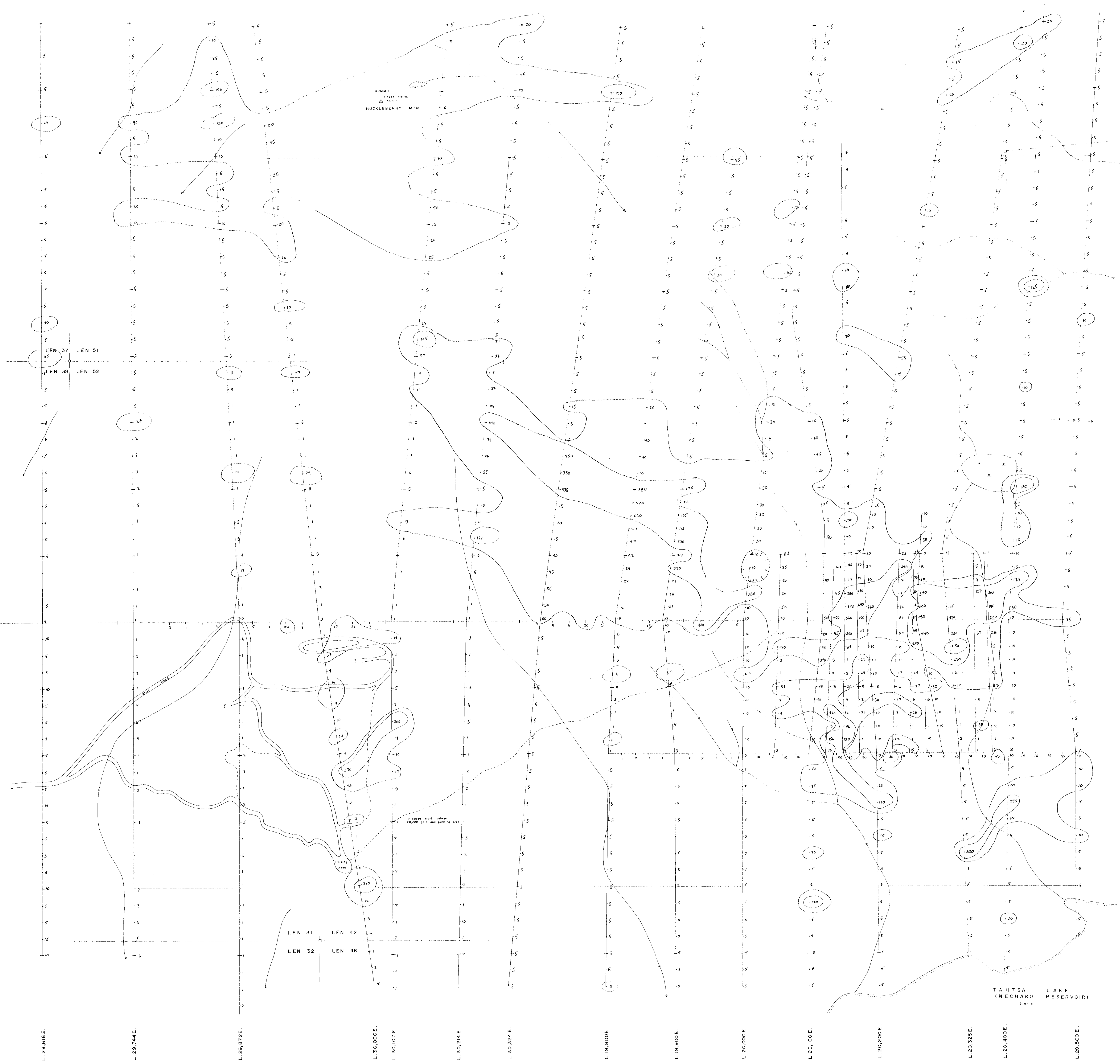
- X Rock Sample Location
- Satellite and Airphoto lines
- A Reference Location

**GEOLOGICAL BRANCH
ASSESSMENT REPORT**

19,087

SCALE 1:50,000

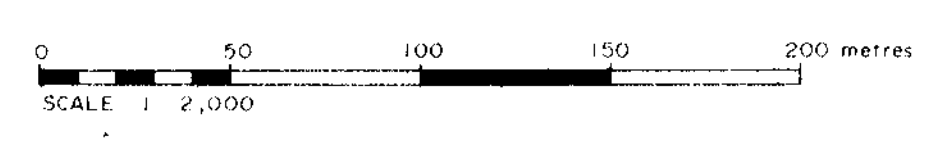
REVISED	HUCKLEBERRY PROJECT	
DEM. # Aug 1989	ROCK GEOCHEM AND INTERPRETED STRUCTURES	
PROJ. No. 241	SURVEY BY J. R. I. R., D.M.	DATE ... 1989
N.T.S. 93E/11E	DRAWN BY S. S. S.	SCALE 1:10,000
DWG. No.	NORANDA EXPLORATION	
FIG. 8	OFFICE PRINCE GEORGE, B.C.	



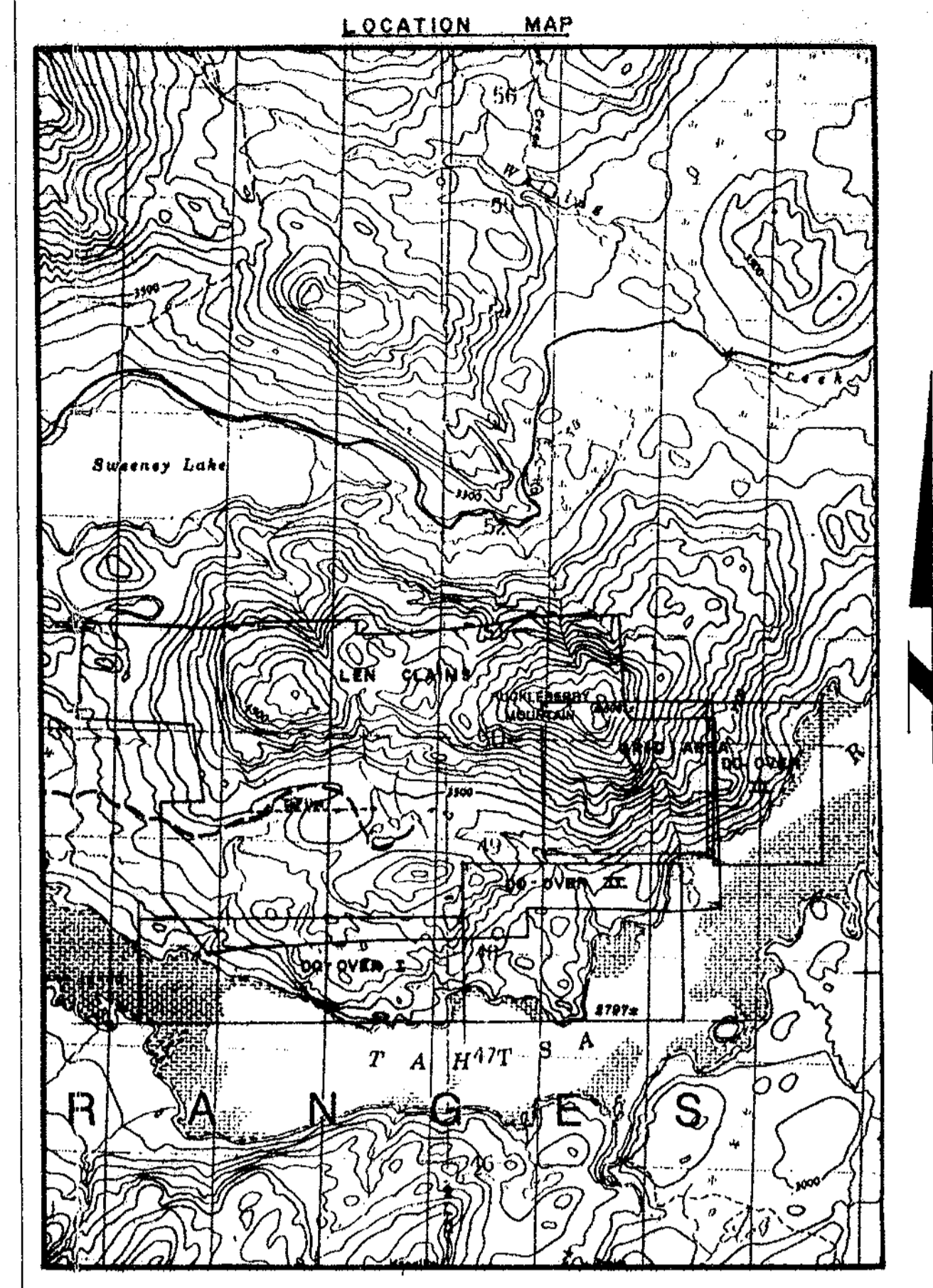
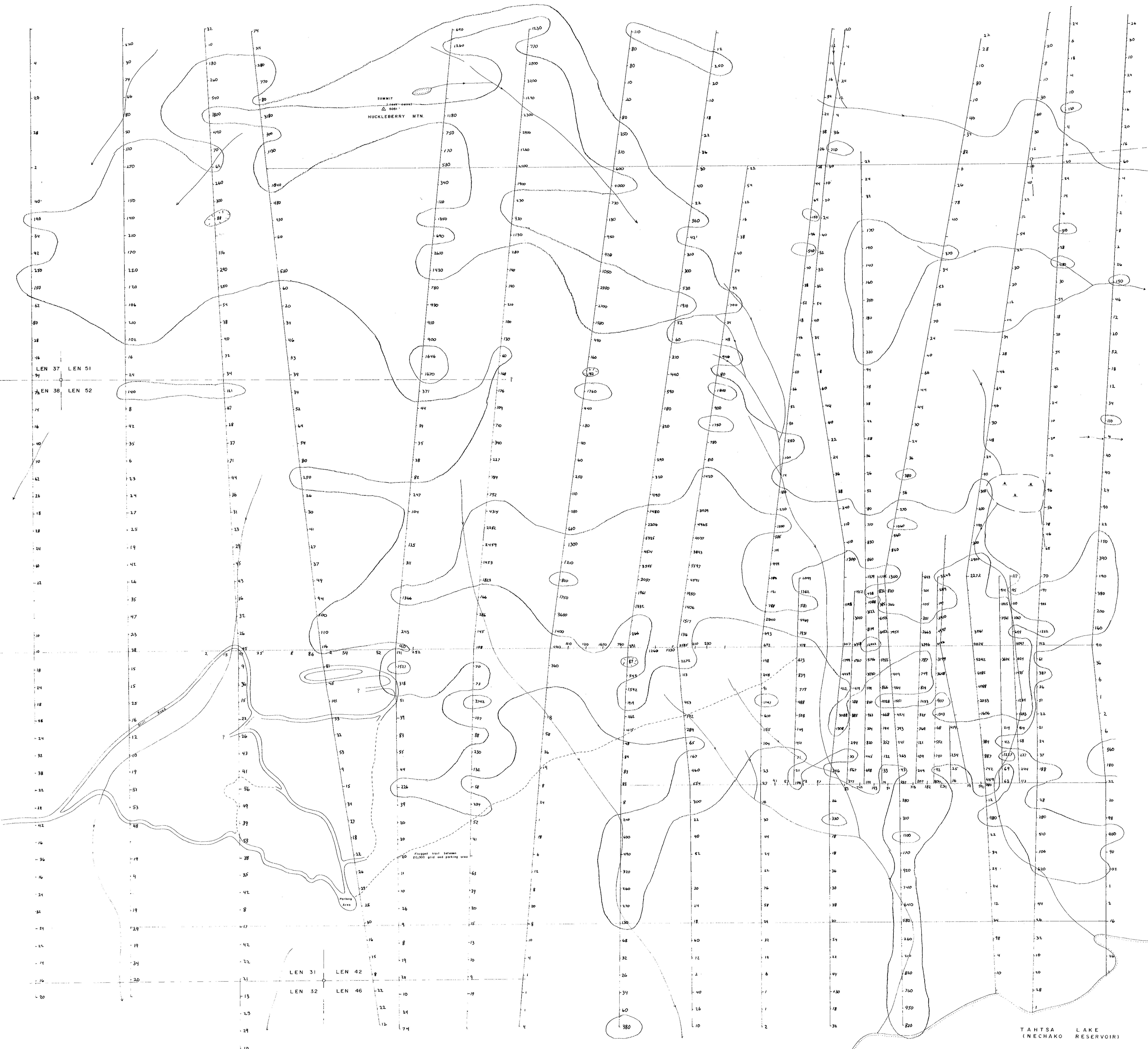
30,900N
 30,800N
 T/L 30,700N
 30,600N
 30,500N
 30,400N
 30,300N
 30,200N
 30,100N
 B/L 30,000N At 90°
 29,900N
 29,800N (20,000 B.L. (Old Grid))
 29,700N
 T/L 29,600N
 29,500N
 29,400N

GEOLOGICAL BRANCH
 ASSESSMENT REPORT
19,087

Note: B.L. horizon was collected with grubber or soil auger. Analyzed by AA or some Analytical Labs or Noranda's geochemical lab.



REVISED	HUCKLEBERRY PROJECT	
	EAST GRID	
	SOIL GEOCHEM SURVEY	
	Au (ppb)	
PROJ. No. 741	SURVEY BY: D.E.M.Jr.	DATE: Aug., 1988
NTS: 937/11C	DRAWN BY: S.K.B.	SCALE: 1:20,000
DWG. No.	NORANDA EXPLORATION	
FIG. 9	OFFICE: PRINCE GEORGE, B.C.	



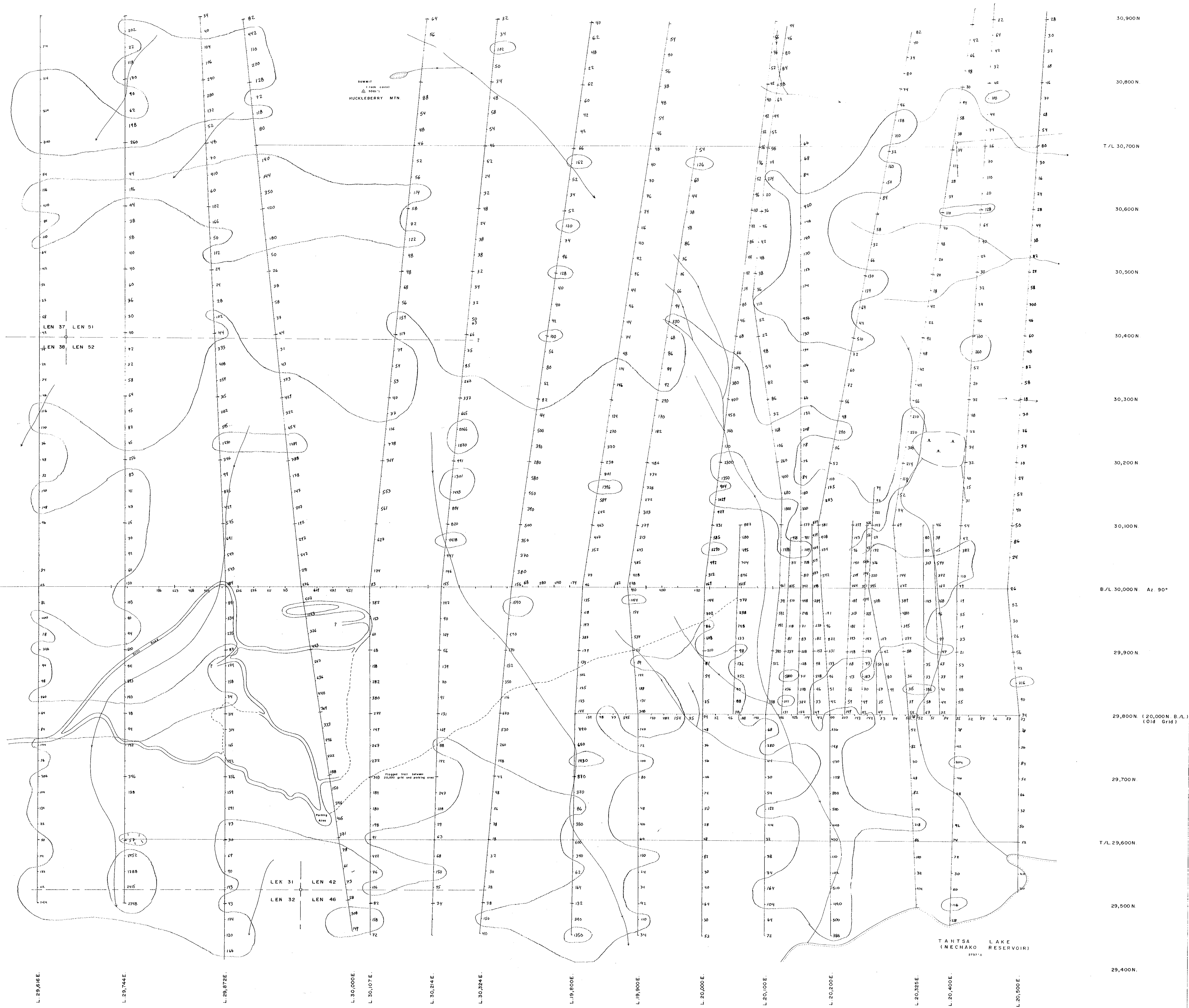
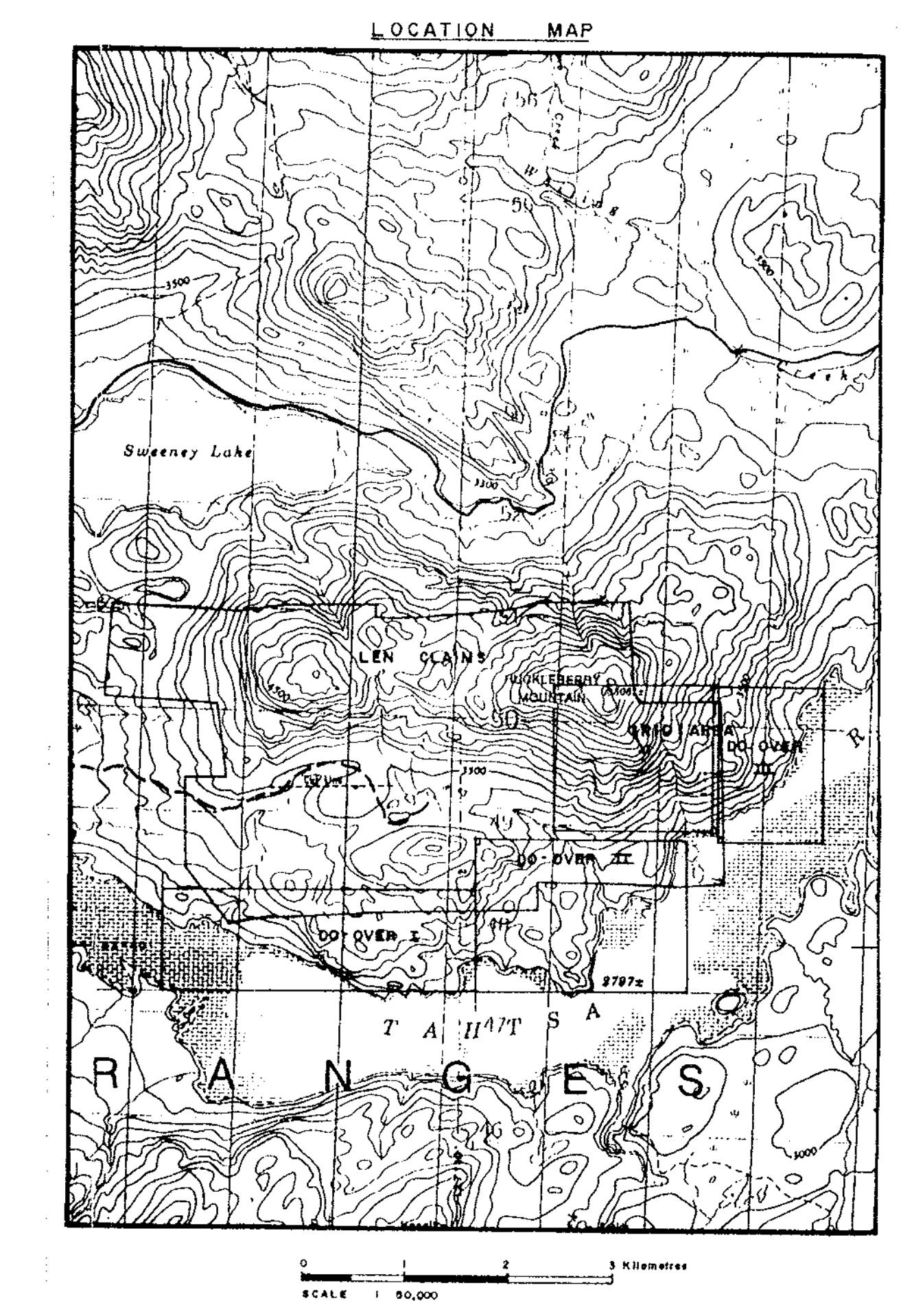
30,900 N
 30,800 N
 T/L 30,700 N
 30,600 N
 30,500 N
 30,400 N
 30,300 N
 30,200 N
 30,100 N
 B/L 30,000 N A2 90°
 29,900 N
 29,800 N (20,000 B.L.)
 (016 Grid)
 29,700 N
 T/L 29,600 N
 29,500 N
 29,400 N

GEOLOGICAL BRANCH
 ASSESSMENT REPORT
19,087

Note: B - horizon soils collected with grabber or soil auger
 Analyzed by AA or Acme Analytical Labs or Noranda's
 geotechnical lab

0 50 100 150 200 metres
 SCALE 1:2,000

REVISED	HUCKLEBERRY PROJECT	
	EAST GRID	
	SOIL GEOCHEM SURVEY	
	As (ppm)	
PROJ. No. 241	SURVEY BY: E. Wignall	DATE: Aug. 1992
N.T.S. 93/11 E	DRAWN BY: S.K.B.	SCALE: 1:2,000
DWG. No.	NORANDA EXPLORATION	
FIG. 10	OFFICE: PRINCE GEORGE, B.C.	

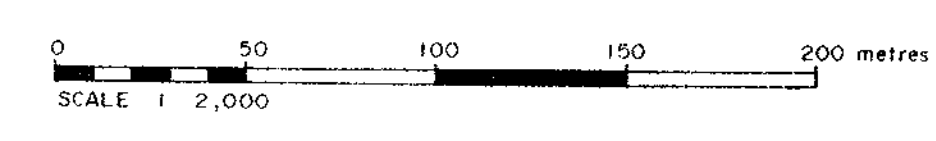


30,900 N
30,800 N
T/L 30,700 N
30,600 N
30,500 N
30,400 N
30,300 N
30,200 N
30,100 N
B/L 30,000 N Az 90°
29,900 N
29,800 N (20,000 B.L.) (Old Grid)
29,700 N
T/L 29,600 N
29,500 N
29,400 N

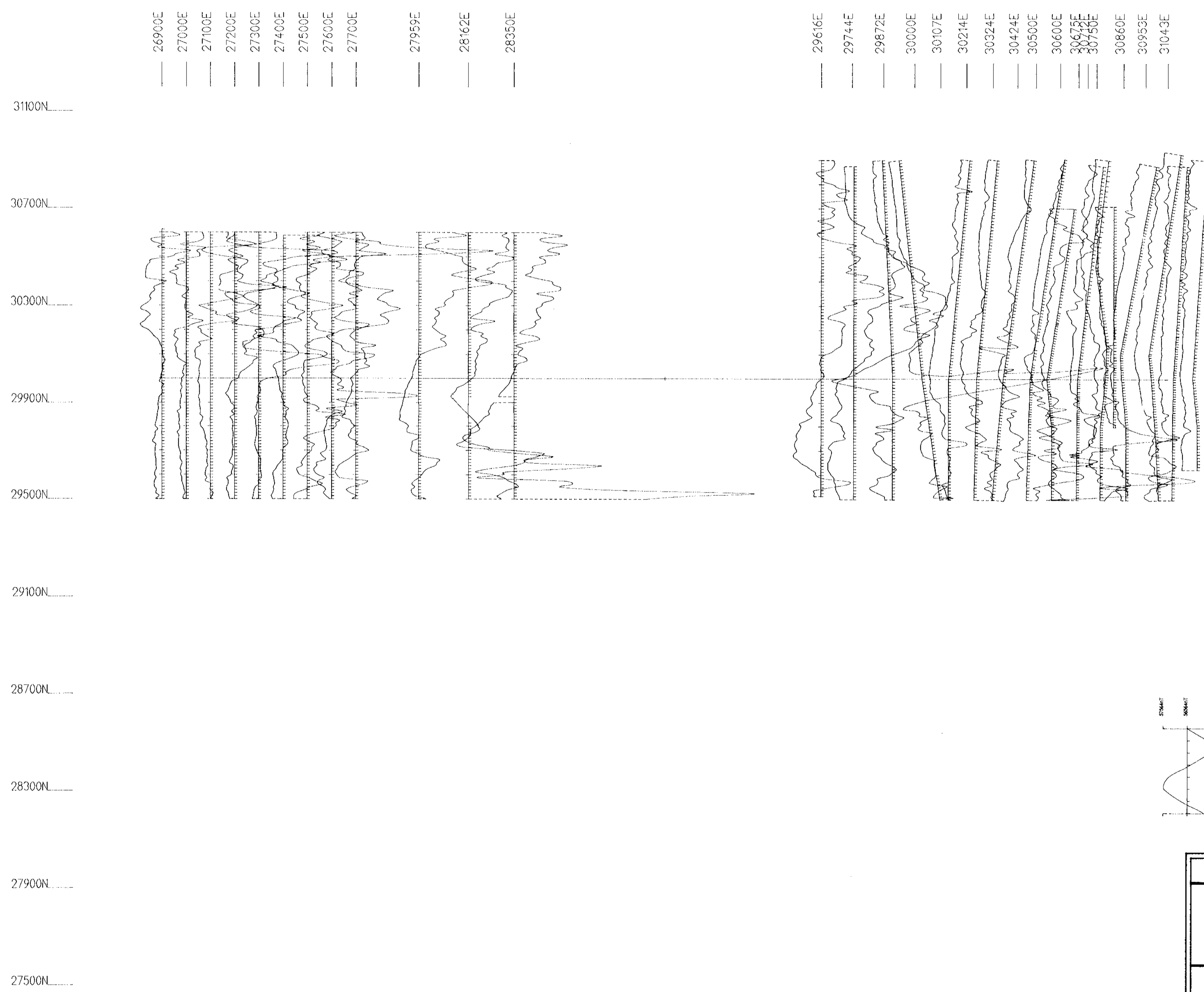
GEOLOGICAL BRANCH
ASSESSMENT REPORT

19,087

Note: B - horizon soils collected with grabber or soil auger
Analyzed by AA at Acme Analytical Labs or Noranda's
geochemical lab.



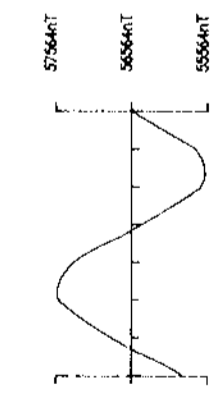
REVISED	HUCKLEBERRY PROJECT	
	EAST GRID	
	SOIL GEOCHEM SURVEY	
	Cu (ppm)	
PROJ. No. 241	SURVEY BY: DEM JJ	DATE: Aug., 1999
N.T.S. 92/11E	DRAWN BY: S.S.T.	SCALE: 1:2,000
DWG. No.	NORANDA EXPLORATION	
FIG. II	OFFICE: PRINCE GEORGE, B.C.	



30000N BASELINE 0°

GEOLOGICAL BRANCH
ASSESSMENT REPORT

19,087



Instrument	: OMNI +
Field	: TOTAL
Datum	: 0.0 nT
Contour Interval	:
Profile Scale	: 1000 nT / Cm
Conductor Axis	:



HUCKLEBERRY	
MAGNETOMETER SURVEY	
PROJECT: HUCKLEBERRY PROJECT # : 241 BASELINE AZIMUTH : 0 Deg.	
SCALE = 1 :10000	DATE : 7/10/89
SURVEY BY : WK/MW	NTS :
FILE: M24189 NORANDA EXPLORATION	

FIG. 12