

Vol. II
Report on the Geochemical
Soil Survey of the King Jack South Group
Slocan Mining Division, B.C.
NTS 82 F/11W

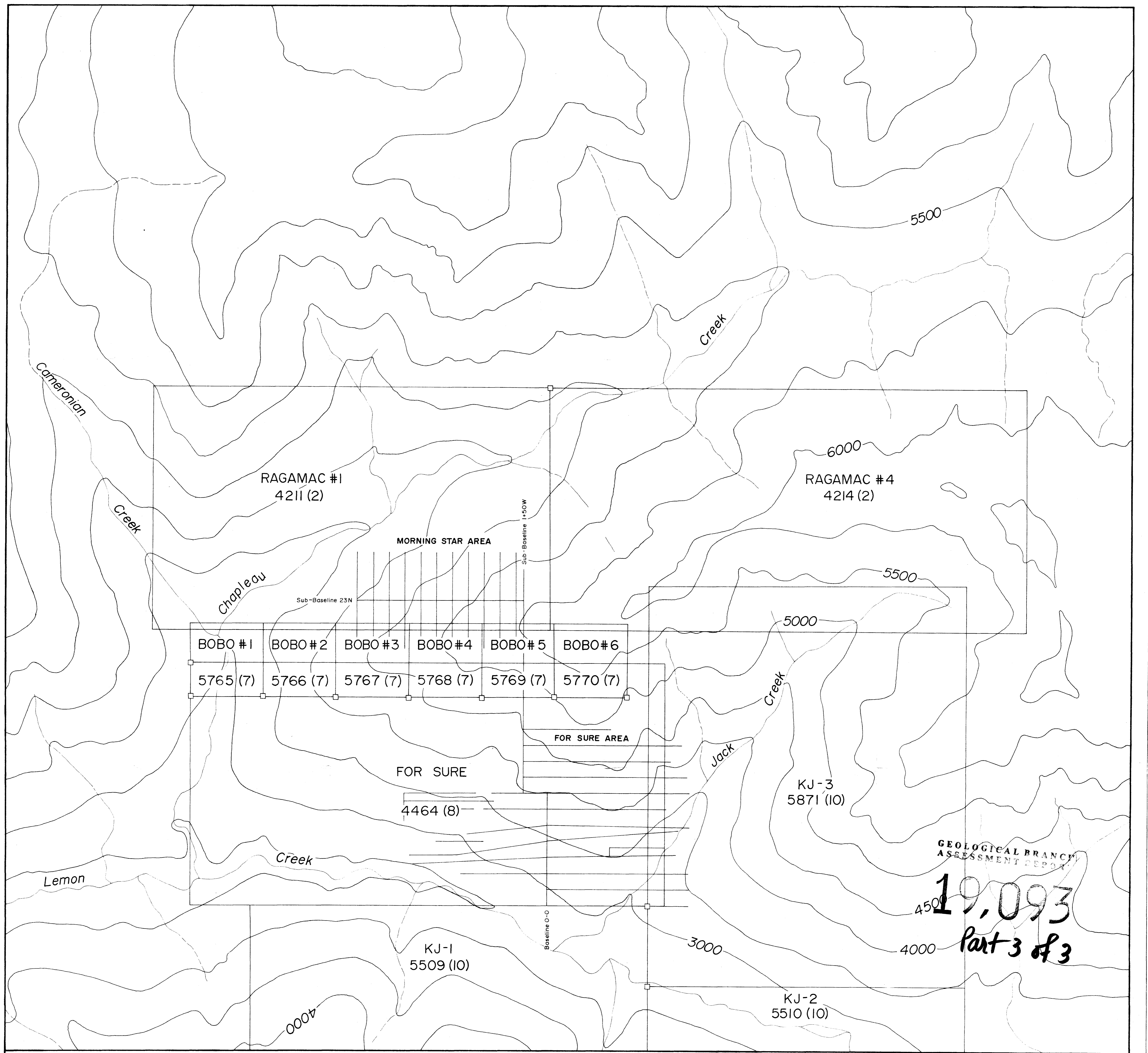
P. J. Santos, P. Eng.

3

19093

PART 23

OF 3

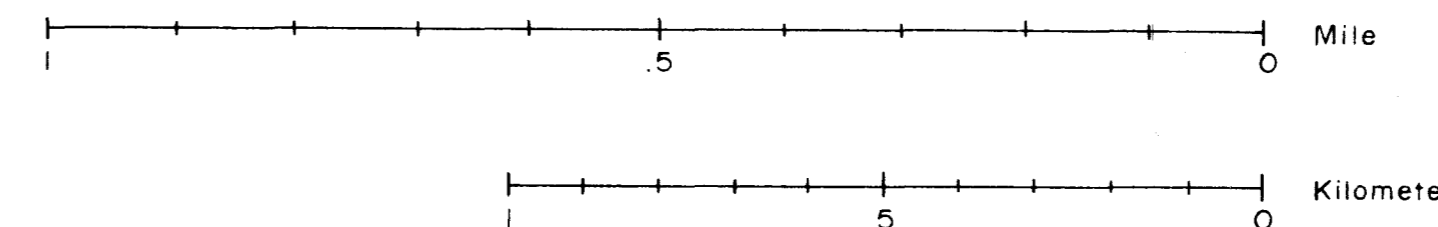


GEOLOGICAL BRANCH
ASSESSMENT REPORT

19,093
Part 3 of 3

LEGEND

- LCP (Legal Corner Post)
- 4500— Contour Elevation in feet



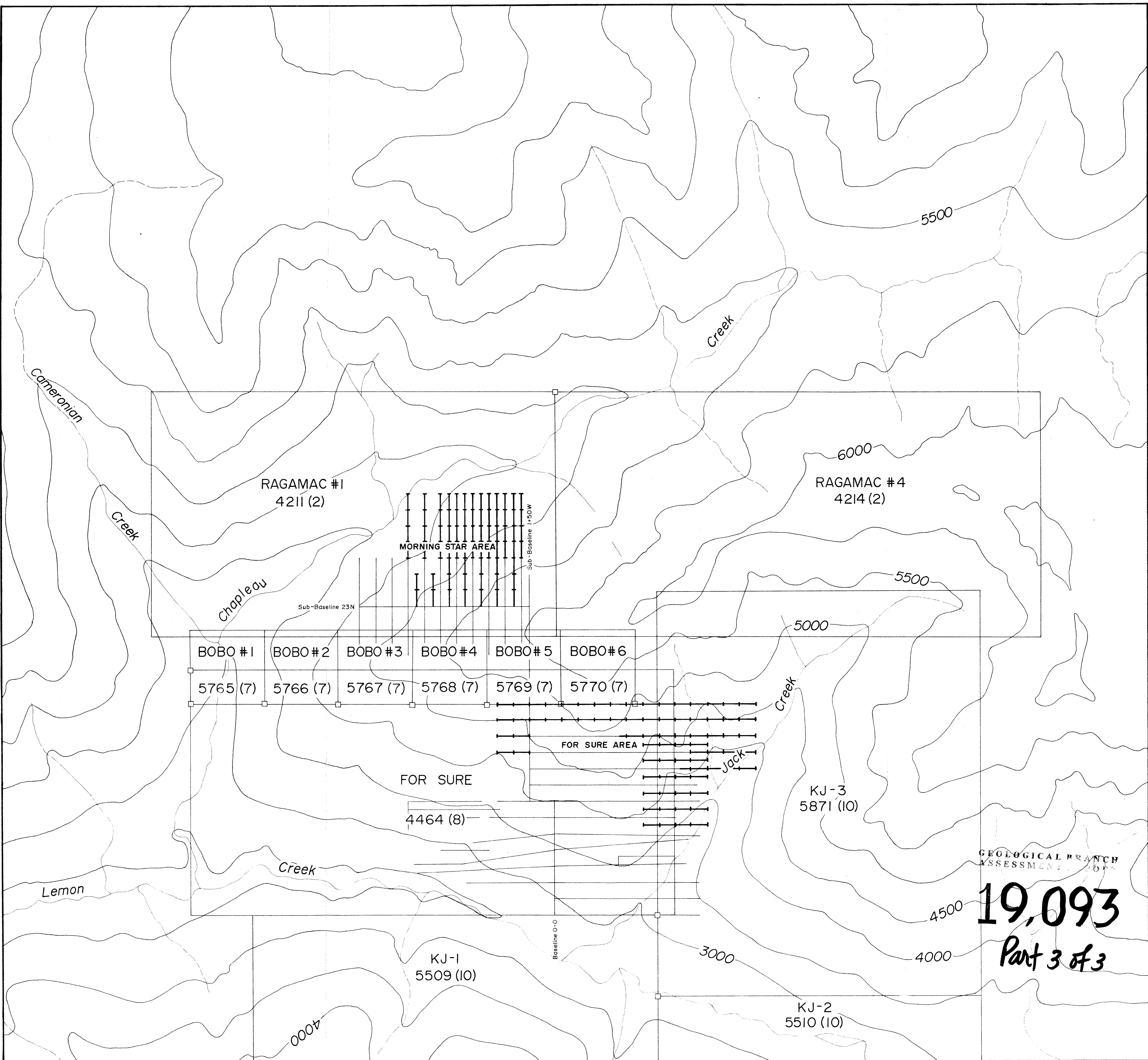
Note: Surveyed by chain and Brunton compass.

KING JACK RESOURCES LTD.

1988 EXPLORATION GRID
KING JACK SOUTH GROUP

ANGINEL RESOURCES LTD.

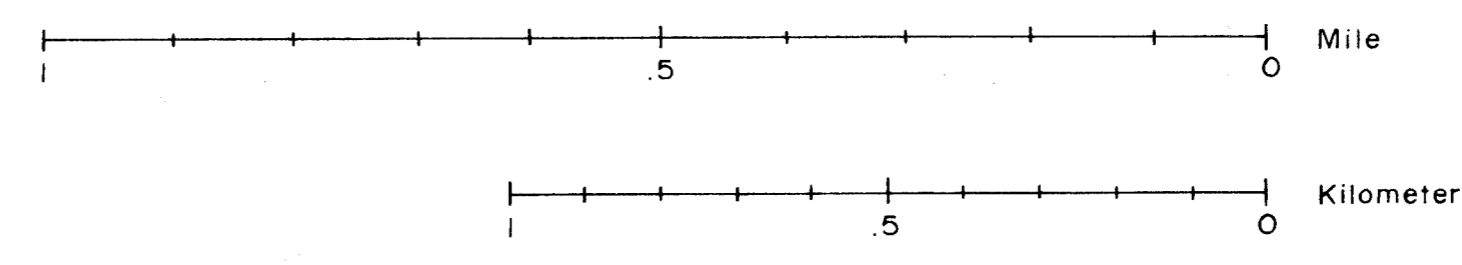
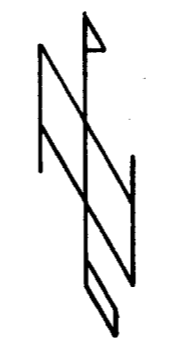
Drawn by: P.J. Santos P.Eng Date: 1989 PLATE NO.130



GEOLOGICAL BRANCH
ASSESSMENT

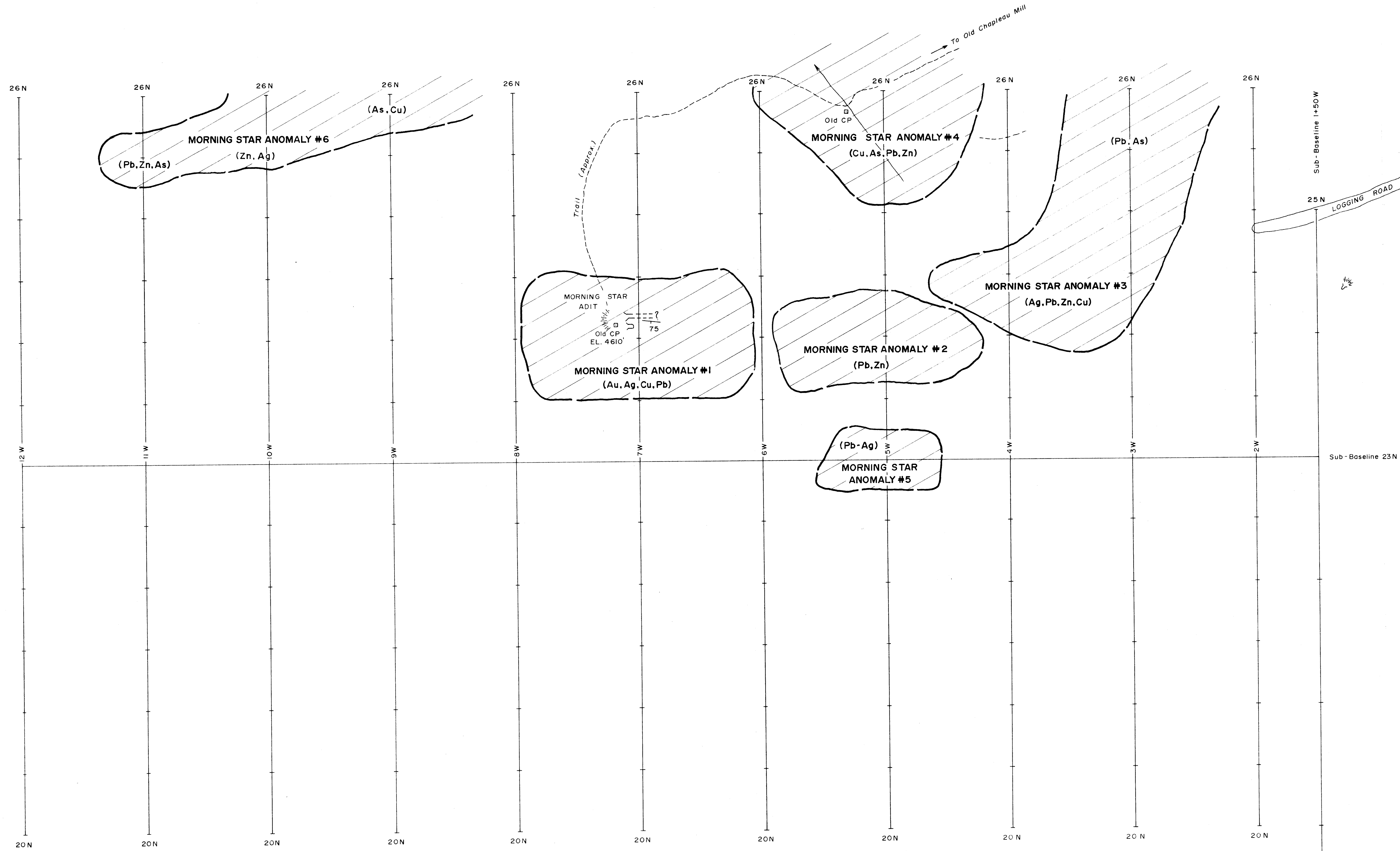
19,093
Part 3 of 3

- LEGEND**
- LCP (Legal Corner Post)
 - 4500— Contour Elevation in feet
 - +— Proposed Follow-up Exploration Grid



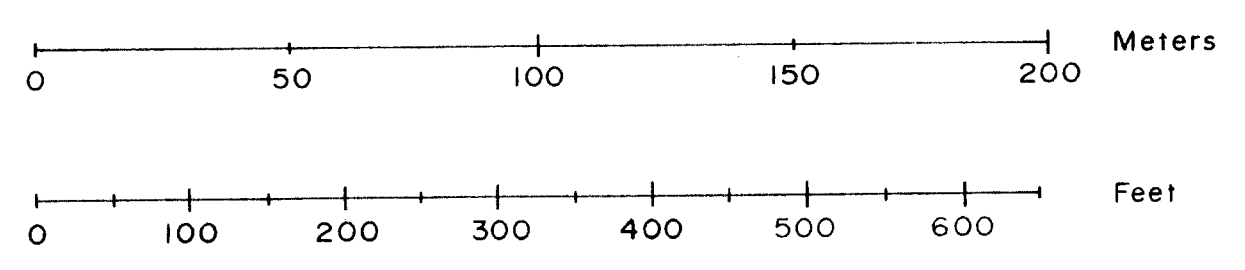
Note: Surveyed by chain and Brunton compass.

KING JACK RESOURCES LTD.		
PROPOSED 1989 EXPLORATION GRID KING JACK SOUTH GROUP		
ANGINEL RESOURCES LTD.		
Drawn by: P.J. Santos P.Eng.	Date 1989	PLATE NO.143



LEGEND

ANOMALY #1
(Au, Ag, Cu, Pb)
Geochem Anomaly
(Anomalous metals as shown)

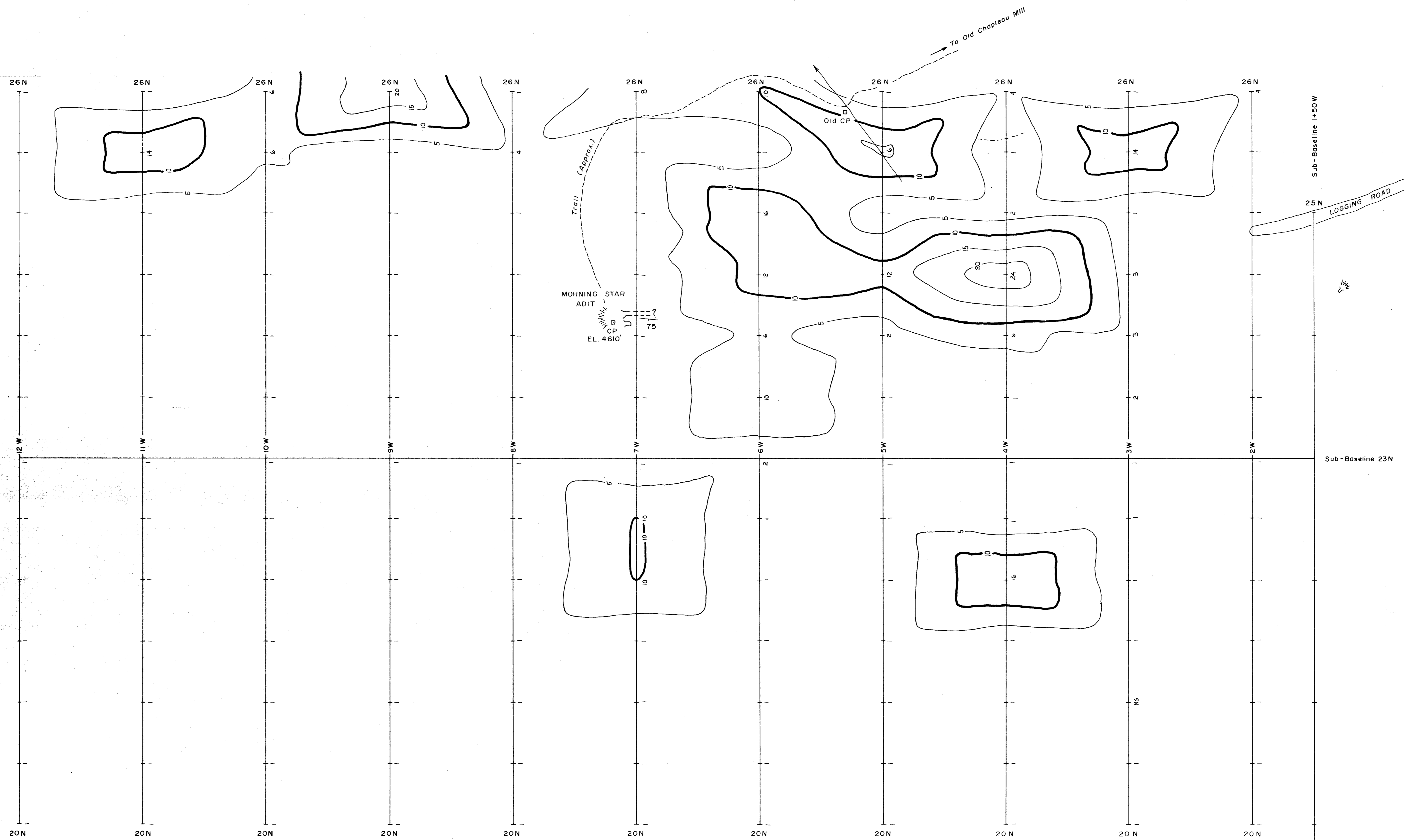


Note: Surveyed by chain and Brunton compass.

GEOLOGICAL BRANCH
ASSESSMENT REPORT

19,093
Part 3 of 3

KING JACK RESOURCES LTD.		
MORNING STAR AREA GEOCHEM ANOMALY MAP		
ANGINEL RESOURCES LTD.		
Drawn by: P.J. Santos, P.Eng.	Date: 1989	PLATE NO.125



As Geochem

MEAN 2.6 ppm
 STD. DEV. 3.9 ppm
 CONTOUR INTERVAL 5 ppm

0 50 100 150 200 Meters

0 100 200 300 400 500 600 Feet

Note: Surveyed by chain and Brunton compass.

GEOLOGICAL BRANCH
 ASSESSMENT REPORT

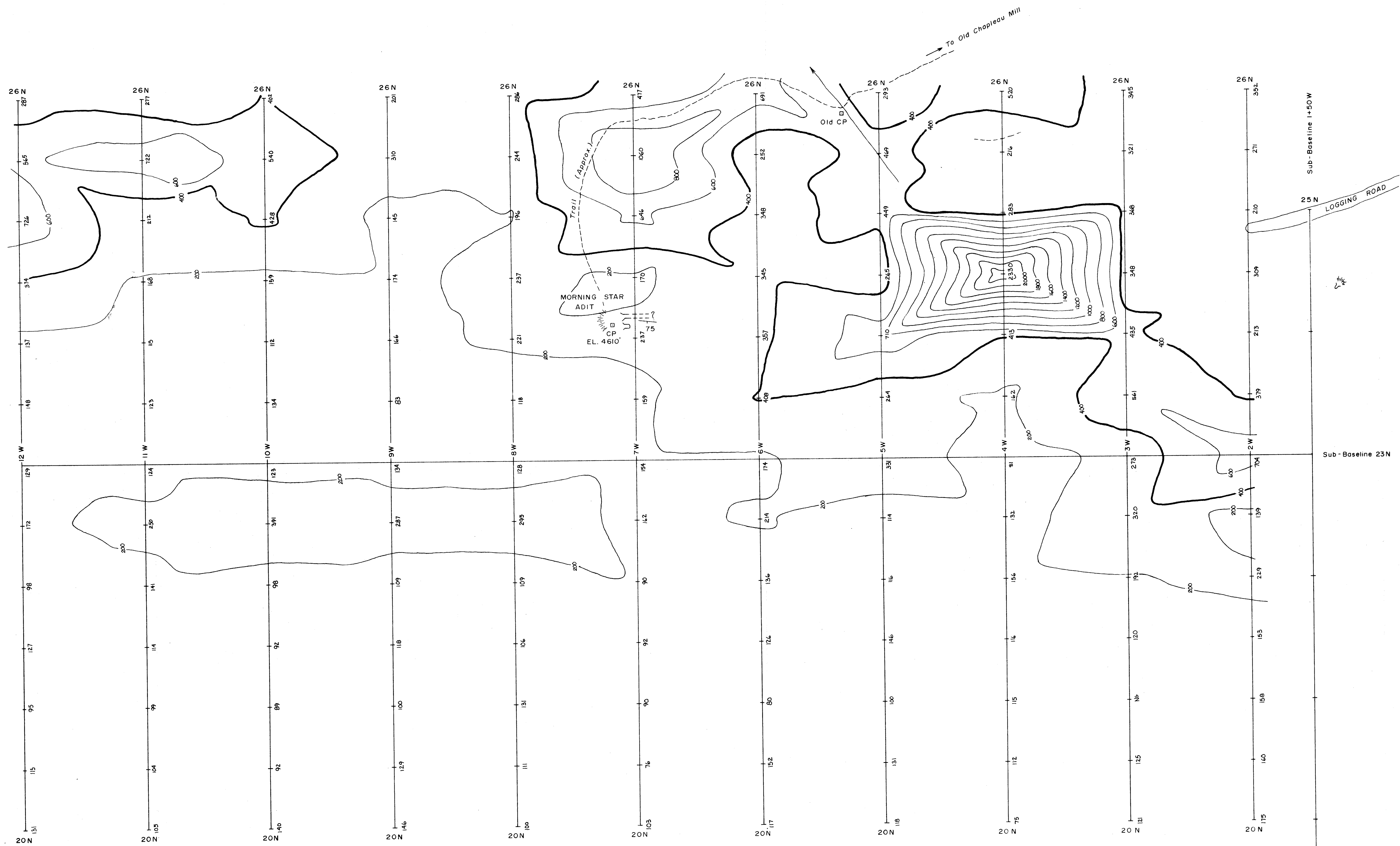
19,093
 Part 3 of 3

KING JACK RESOURCES LTD.

MORNING STAR AREA
 As GEOCHEM MAP
 (ppm)

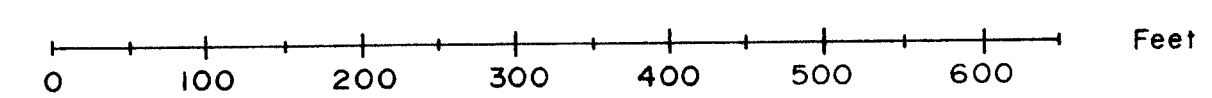
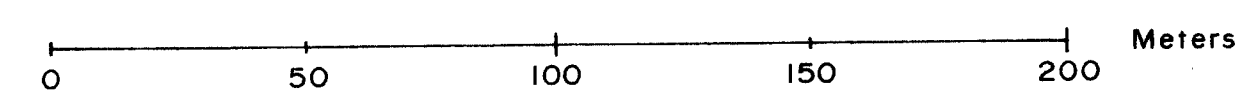
ANGINEL RESOURCES LTD.

Drawn by: P.J. Santos, P.Eng. Date: 1989 PLATE NO.124



Zn Geochem

MEAN 244.2 ppm
 STD. DEV. 232.8 ppm
 CONTOUR INTERVAL 200 ppm

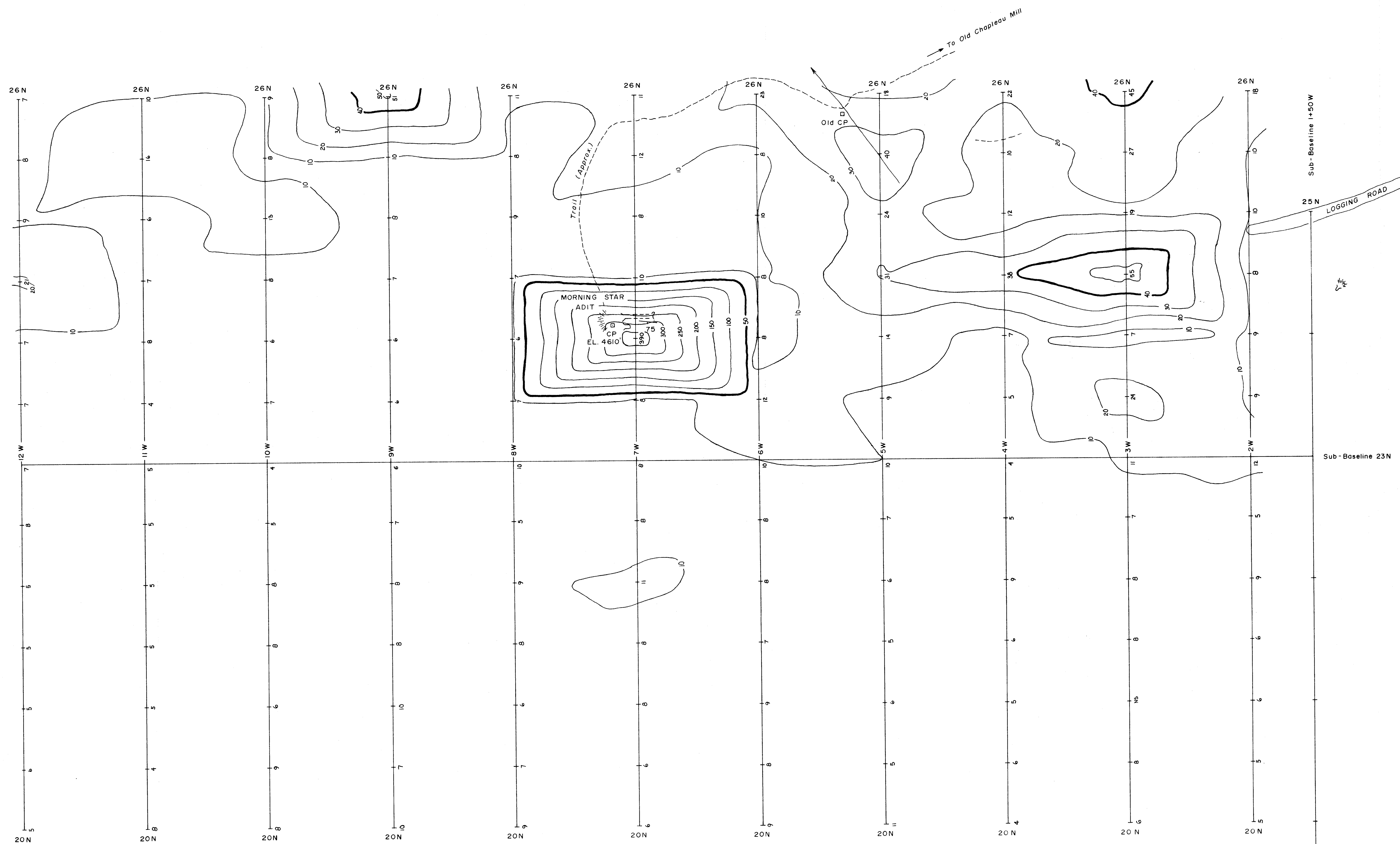


Note: Surveyed by chain and Brunton compass.

GEOLOGICAL BRANCH
 ASSESSMENT REPORT

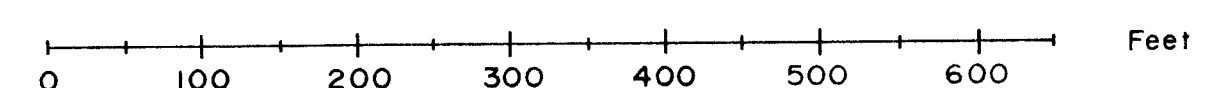
19,093
 Part 3 of 3

KING JACK RESOURCES LTD.		
MORNING STAR AREA Zn GEOCHEM MAP (ppm)		
ANGINEL RESOURCES LTD.		
Drawn by: P.J. Santos, P.Eng.	Date: 1989	PLATE NO.123



Cu Geochem

MEAN 12.6 ppm
 STD. DEV 29.5 ppm
 CONTOUR INTERVAL 10 ppm or as shown



Note: Surveyed by chain and Brunton compass.

GEOLOGICAL BRANCH
 ASSESSMENT REPORT

19,093

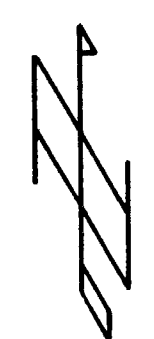
Part 3 of 3

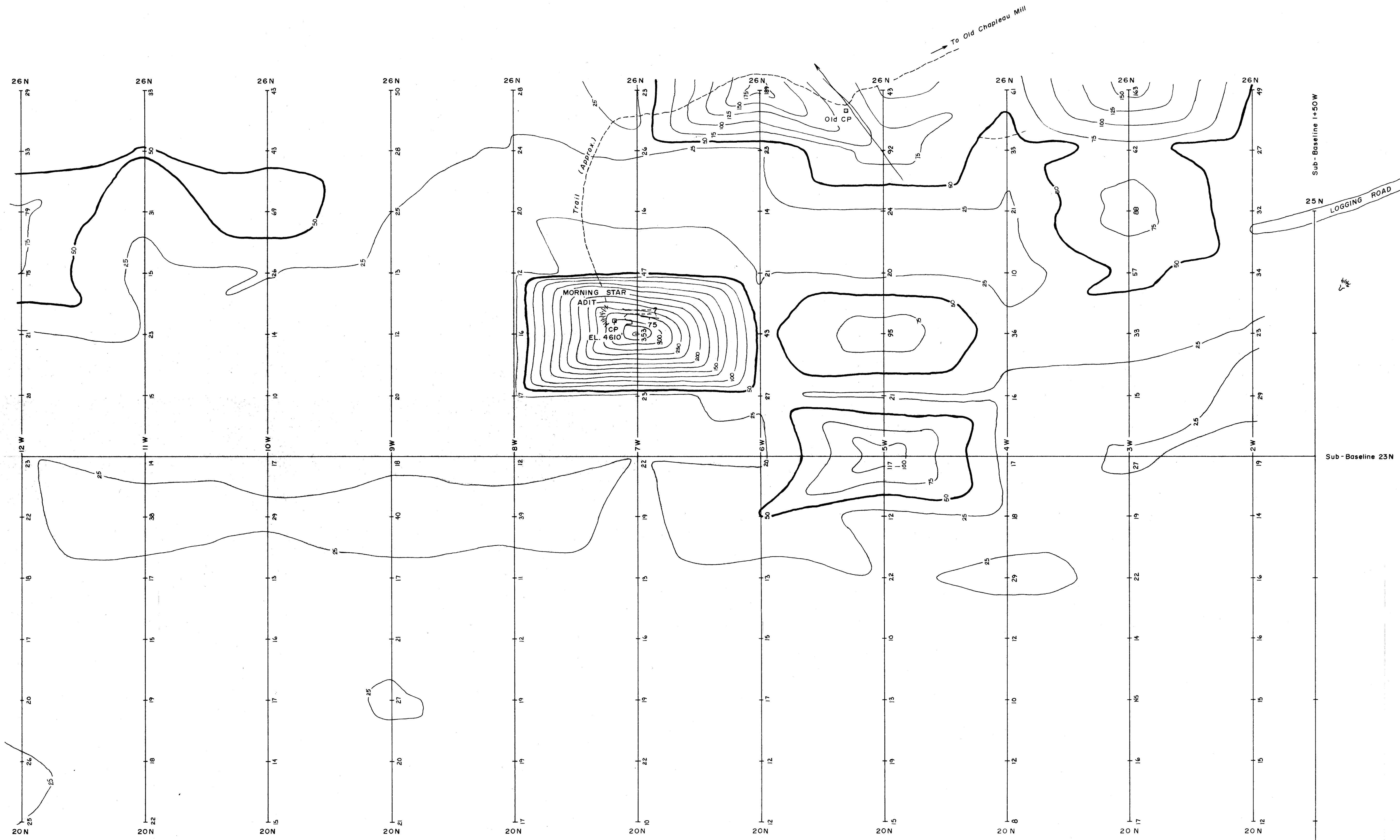
KING JACK RESOURCES LTD.

MORNING STAR AREA
 Cu GEOCHEM MAP
 (ppm)

ANGINEL RESOURCES LTD.

Drawn by: P.J. Santos, P.Eng. Date: 1989 PLATE NO.121





Pb Geochem

MEAN 29.7ppm
 STD. DEV. 34.8ppm
 CONTOUR INTERVAL 25 ppm

0 50 100 150 200 Meters

0 100 200 300 400 500 600 Feet

Note : Surveyed by chain and Brunton compass.

GEOLOGICAL BRANCH
 ASSESSMENT REPORT

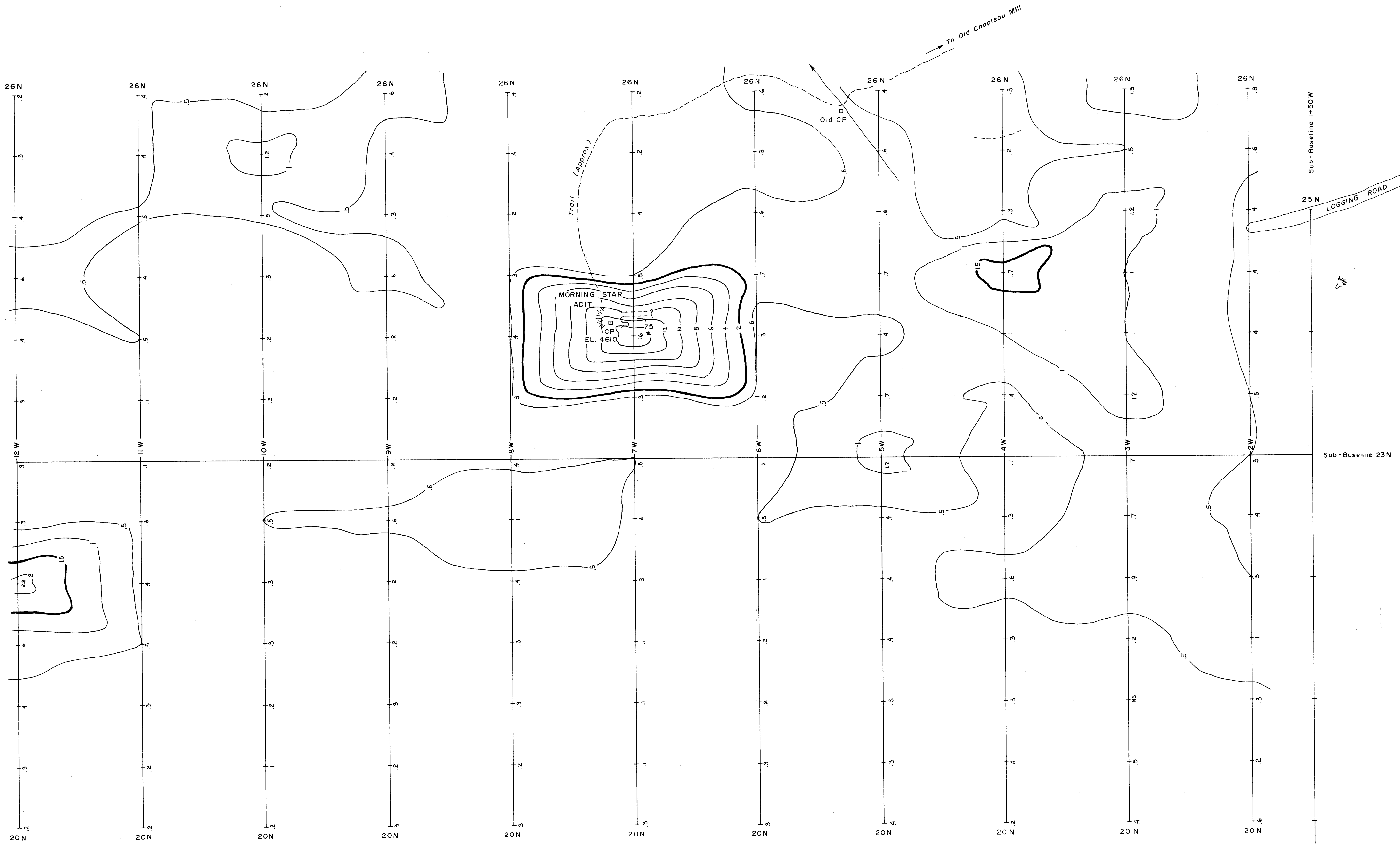
19,093
 Part 3 of 3

KING JACK RESOURCES LTD.

MORNING STAR AREA
 Pb GEOCHEM MAP
 (ppm)

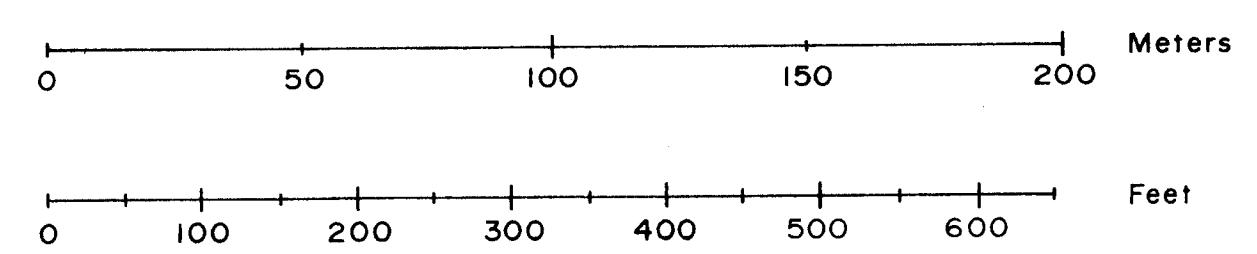
ANGINEL RESOURCES LTD.

Drawn by: P.J. Santos, P.Eng. Date: 1989 PLATE NO. 122

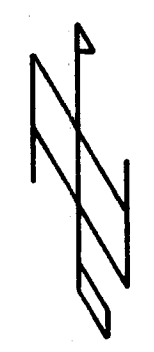


Ag Geochem

MEAN .5ppm
 STD. DEV. 1.2ppm
 CONTOUR INTERVAL .5ppm or as shown



Note: Surveyed by chain and Brunton compass.

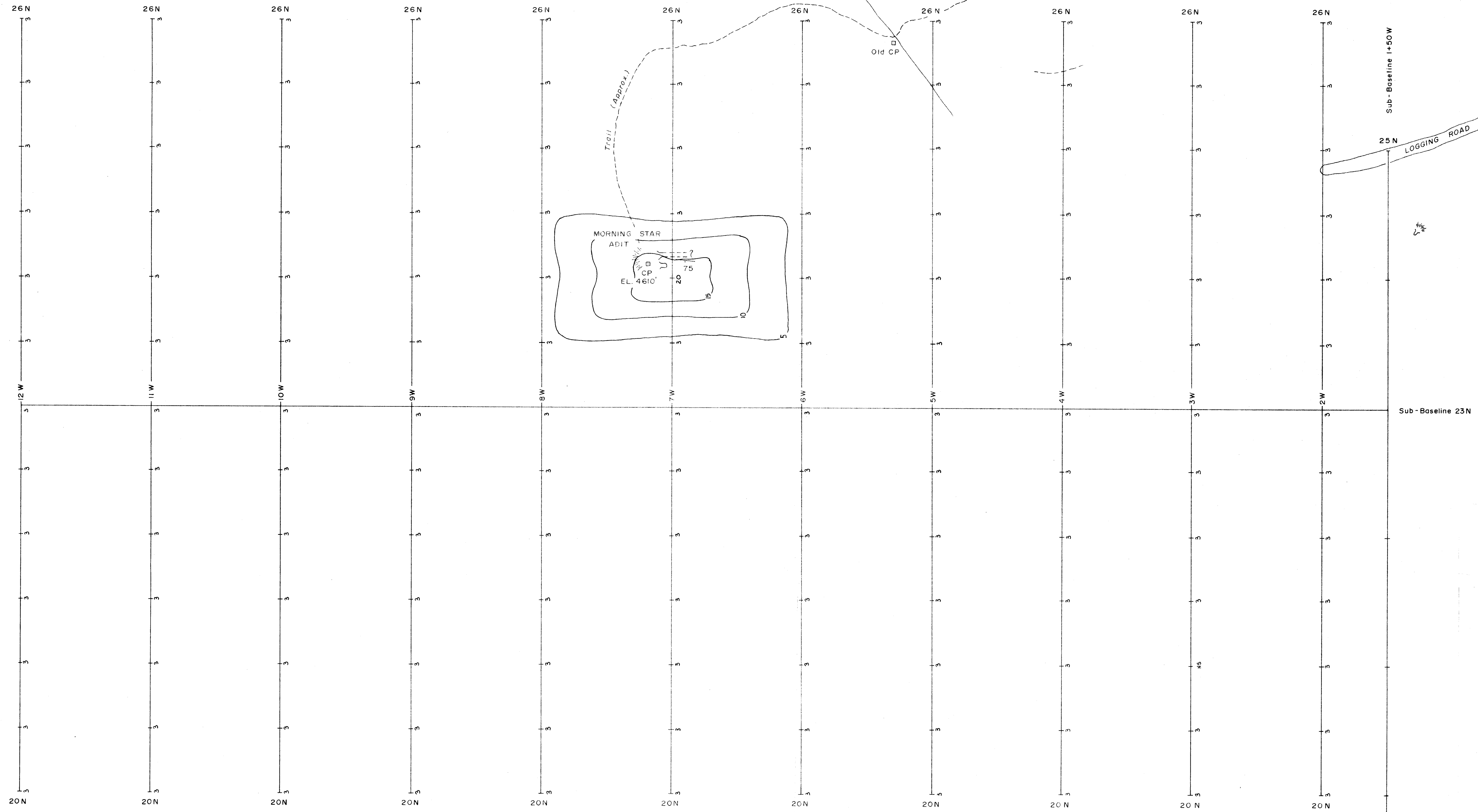


**GEOLOGICAL BRANCH
 ASSESSMENT REPORT**

19,093

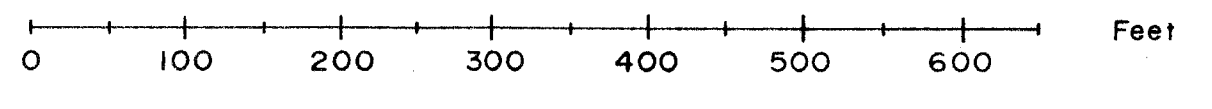
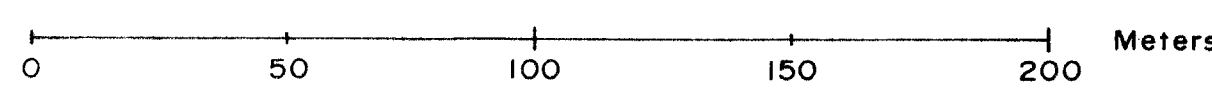
Part 3 of 3

KING JACK RESOURCES LTD.	
MORNING STAR AREA Ag GEOCHEM MAP (ppm)	
ANGINEL RESOURCES LTD.	
Drawn by: P.J. Santos, P.Eng.	Date: 1989
PLATE NO.120	



Au Geochem

MEAN 3.3 ppb
 STD. DEV. 1.3 ppb
 CONTOUR INTERVAL 5ppb



Note: Surveyed with chain and Brunton compass.

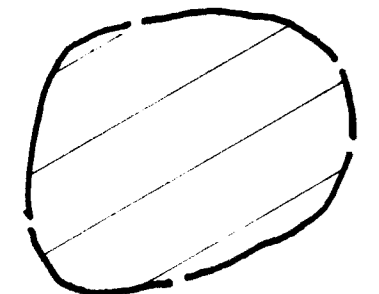
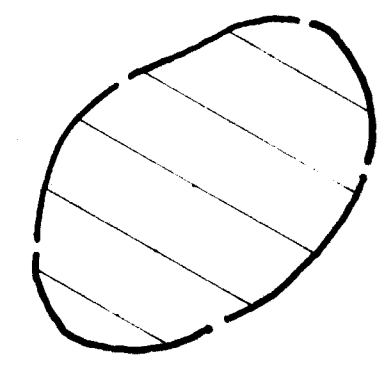
GEOLOGICAL BRANCH
 ASSESSMENT REPORT

19,093
Part 3 of 3



KING JACK RESOURCES LTD.	
MORNING STAR AREA Au GEOCHEM MAP (ppb)	
ANGINEL RESOURCES LTD.	
Drawn by: P.J. Santos, P.Eng.	Date: 1989 PLATE NO.119

LEGEND

-  Coincidental Ag-Pb-Zn-Cu Anomaly
-  Coincidental Au-Ag Anomaly



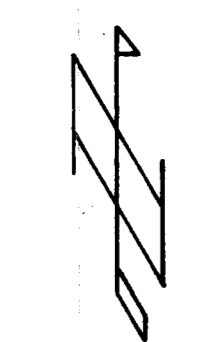
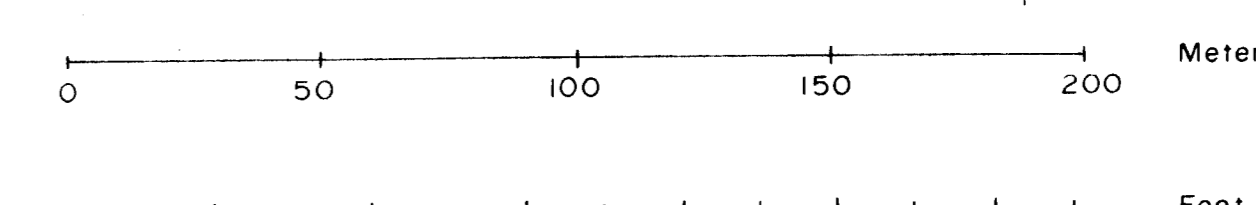
FOR SURE
44 64 (8)

KJ-1
5509 (10)

GEOLOGICAL BRANCH
ASSESSMENT REPORT

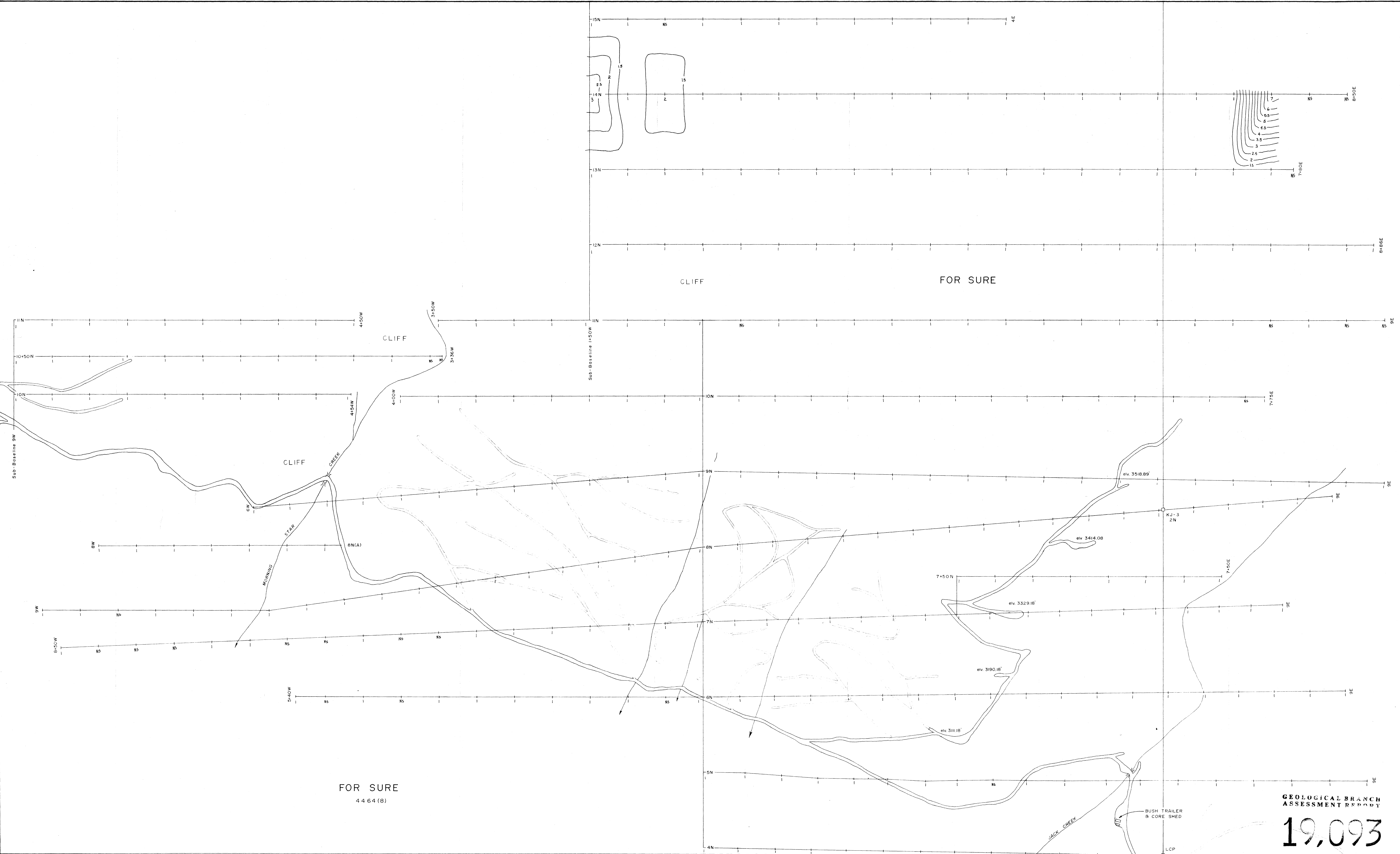
19,093

Part 3 of 3



KING JACK RESOURCES LTD.	
FOR SURE AREA GEOCHEM ANOMALY MAP	
ANGINEL RESOURCES LTD.	
Drawn by: P.J. Santos, P.Eng	Date: 1989
PLATE NO.102	

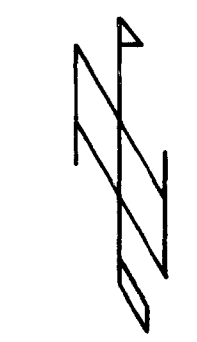
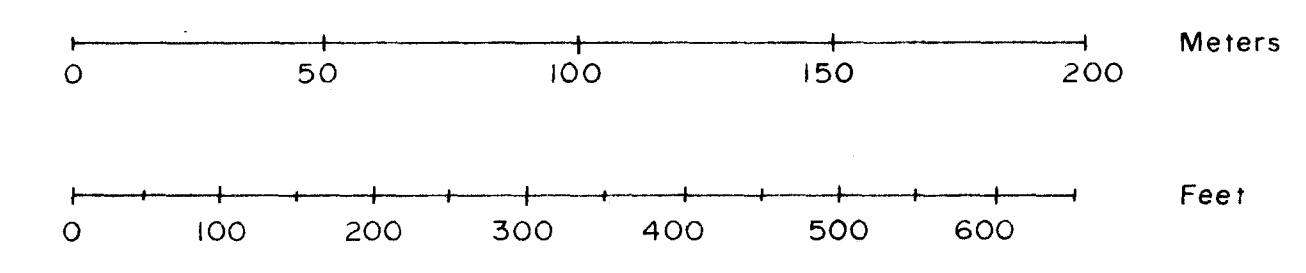
Note: Surveyed by chain and Brunton compass.



FOR SURE
4464 (8)

KJ-1
5509 (10)

As Geochem
MEAN 1.1 ppm
STD. DEV. 3 ppm
CONTOUR INTERVAL 1.5 ppm



Note: Surveyed by chain and Brunton compass.

GEOLOGICAL BRANCH
ASSESSMENT REPORT

19,093

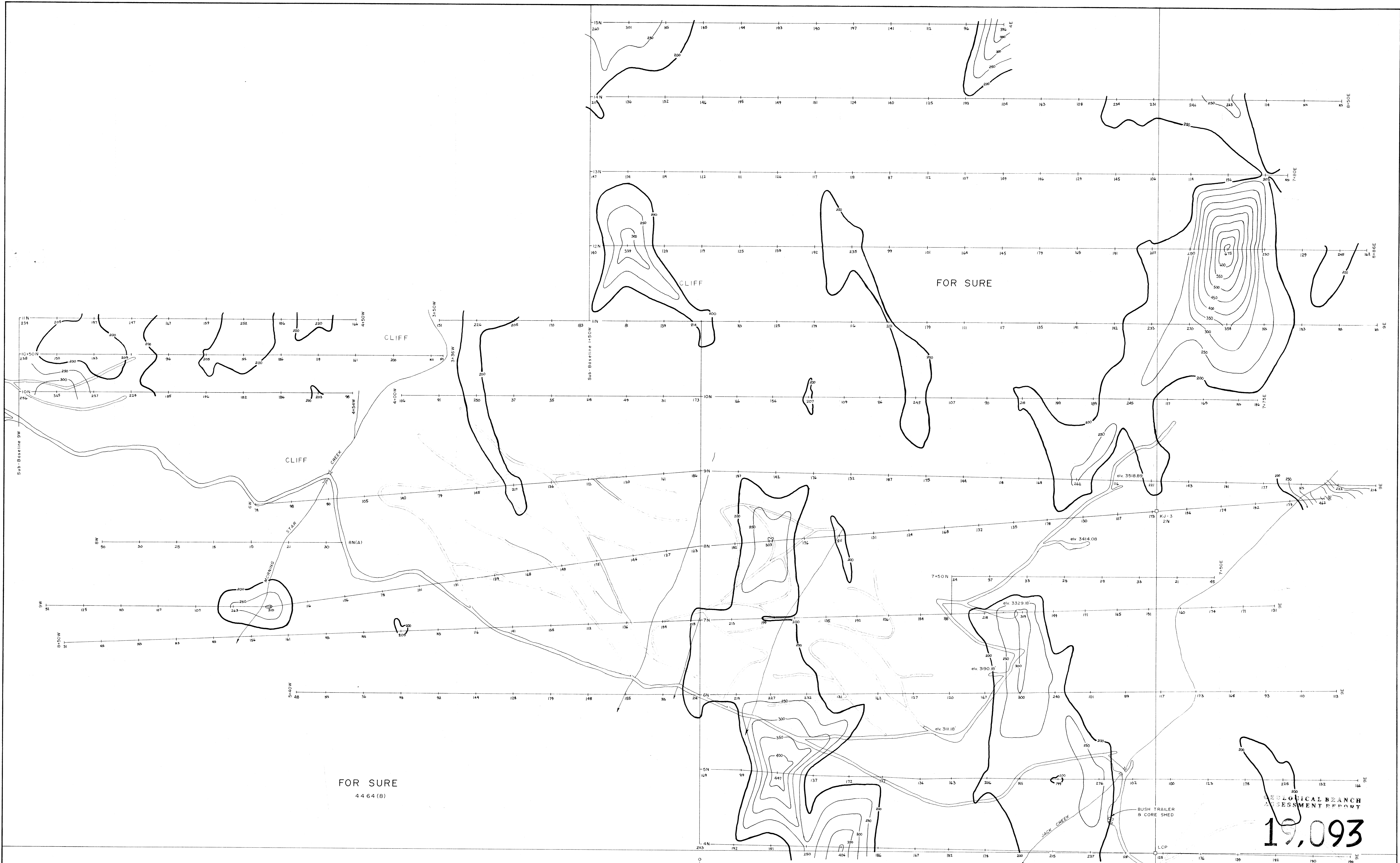
Part 3 of 3

KING JACK RESOURCES LTD.

FOR SURE AREA
As GEOCHEM MAP
(ppm)

ANGINEL RESOURCES LTD.

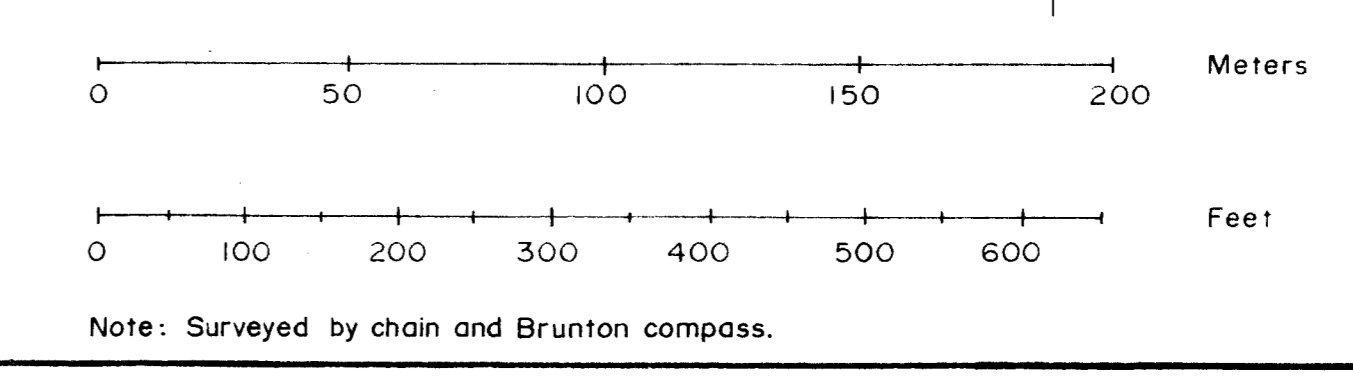
Drawn by: P.J. Santos, P.Eng. Date: 1989 PLATE NO.101



FOR SURE
44 64 (8)

Zn Geochem
MEAN 162.0 ppm
STD. DEV. 73.2 ppm
CONTOUR INTERVAL 50 ppm

KJ-1
5509 (10)



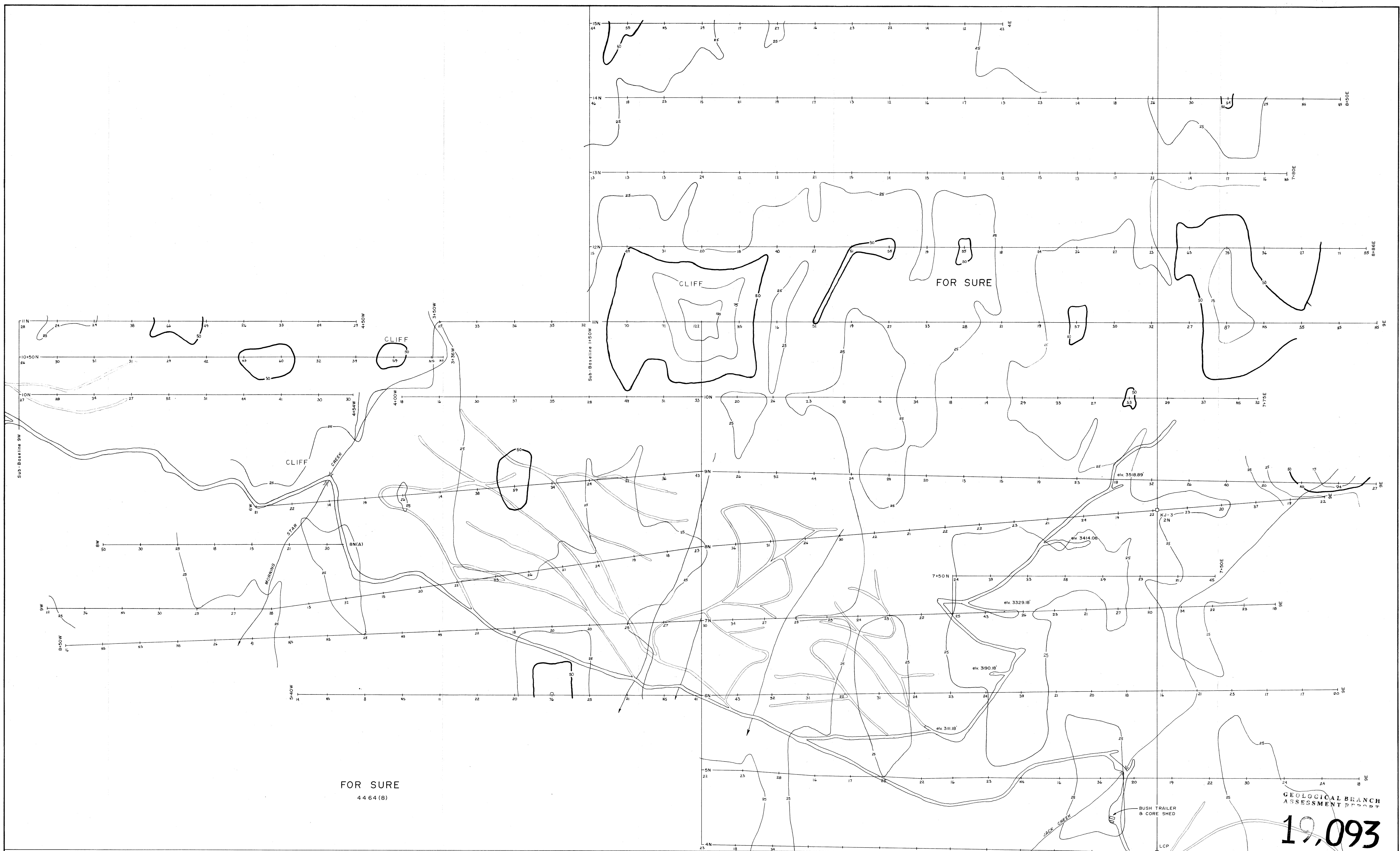
Note: Surveyed by chain and Brunton compass.

MINERALOGICAL BRANCH
ASSESSMENT REPORT

19,093

Part 3 of 3

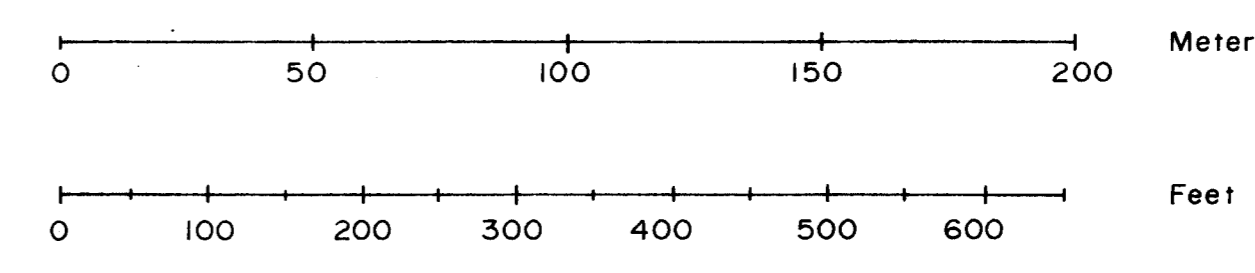
KING JACK RESOURCES LTD.	
FOR SURE AREA Zn GEOCHEM MAP (ppm)	
ANGEL RESOURCES LTD.	
Drawn by: P.J. Santos, P.Eng.	Date: 1989
PLATE NO. 100	



FOR SURE
4 4 6 4 (8)

Pb Geochem
MEAN 29.3 ppm
STD. DEV. 20.7 ppm
CONTOUR INTERVAL 25 ppm

KJ-I
5509 (10)



GEOLOGICAL BRANCH
ASSESSMENT PROJECT

19,093

Part 3 of 3

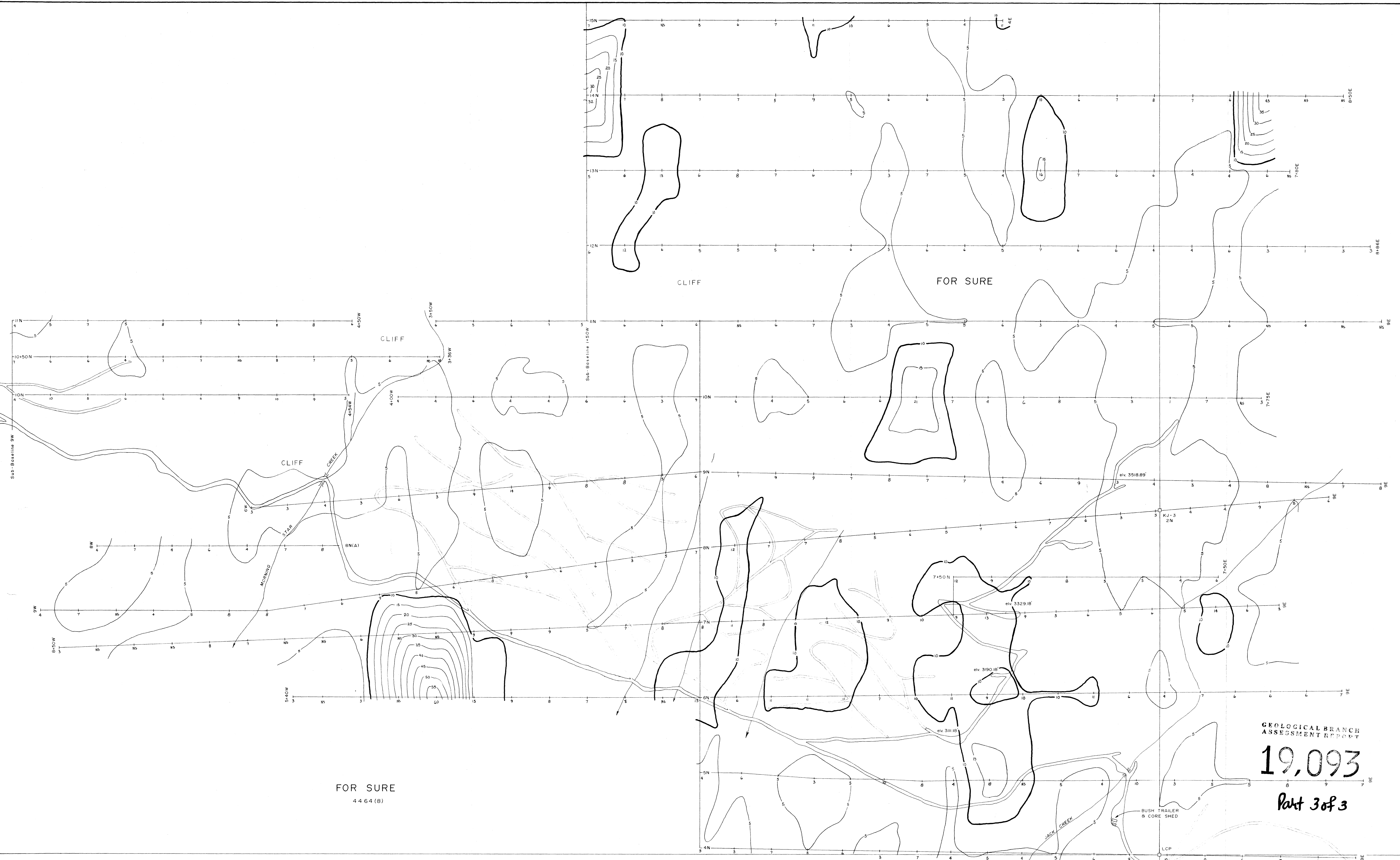
KING JACK RESOURCES LTD.

FOR SURE AREA
Pb GEOCHEM MAP
(ppm)

ANGEL RESOURCES LTD.

Drawn by: P.J. Santos, P.Eng Date: 1989 PLATE NO. 99

Note: Surveyed by chain and Brunton compass.



FOR SURE
4464 (8)

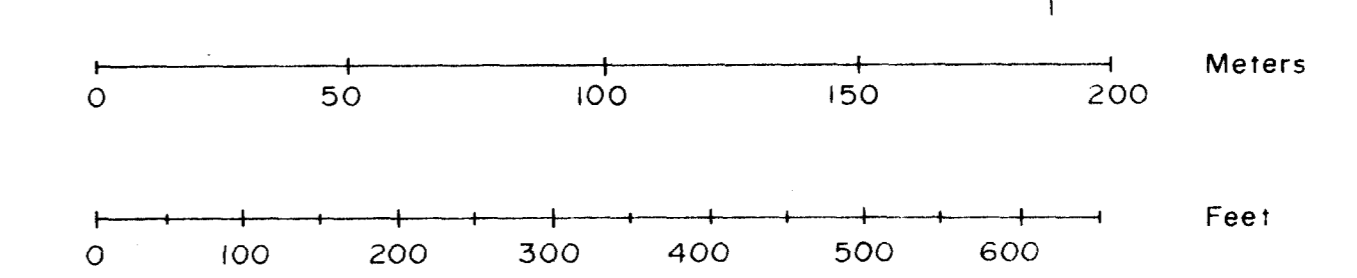
GEOLOGICAL BRANCH
ASSESSMENT REPORT

19,093

Part 3 of 3

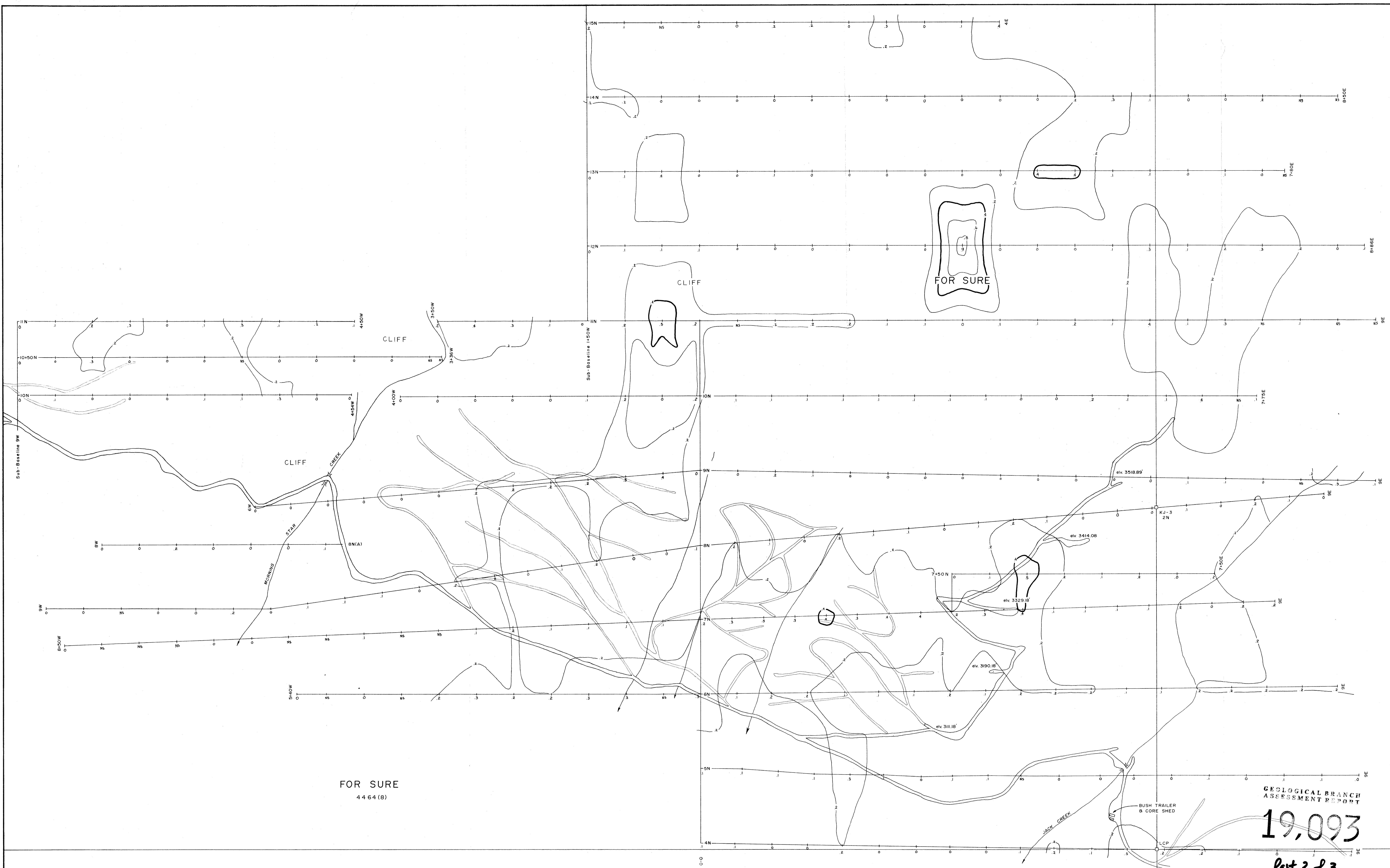
Cu Geochem
MEAN 6.8 ppm
STD. DEV. 4.5 ppm
CONTOUR INTERVAL 5 ppm

KJ-1
5509 (10)



KING JACK RESOURCES LTD.	
FOR SURE AREA Cu GEOCHEM MAP (ppm)	
ANGINEL RESOURCES LTD.	
Drawn by S.J. Santos, P.Eng	Date: 1989 PLATE NO. 98

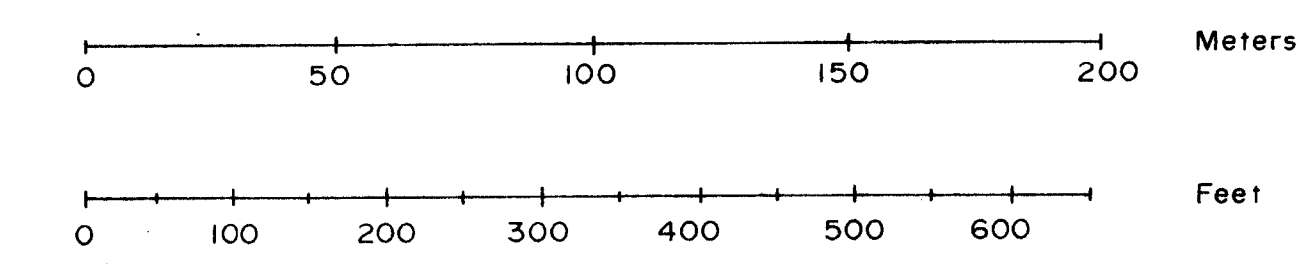
Note: Surveyed by chain and Brunton compass.



FOR SURE
44 64 (8)

Ag Geochem
MEAN .2ppm
STD DEV .1ppm
CONTOUR INTERVAL .2ppm

KJ-1
5509 (10)



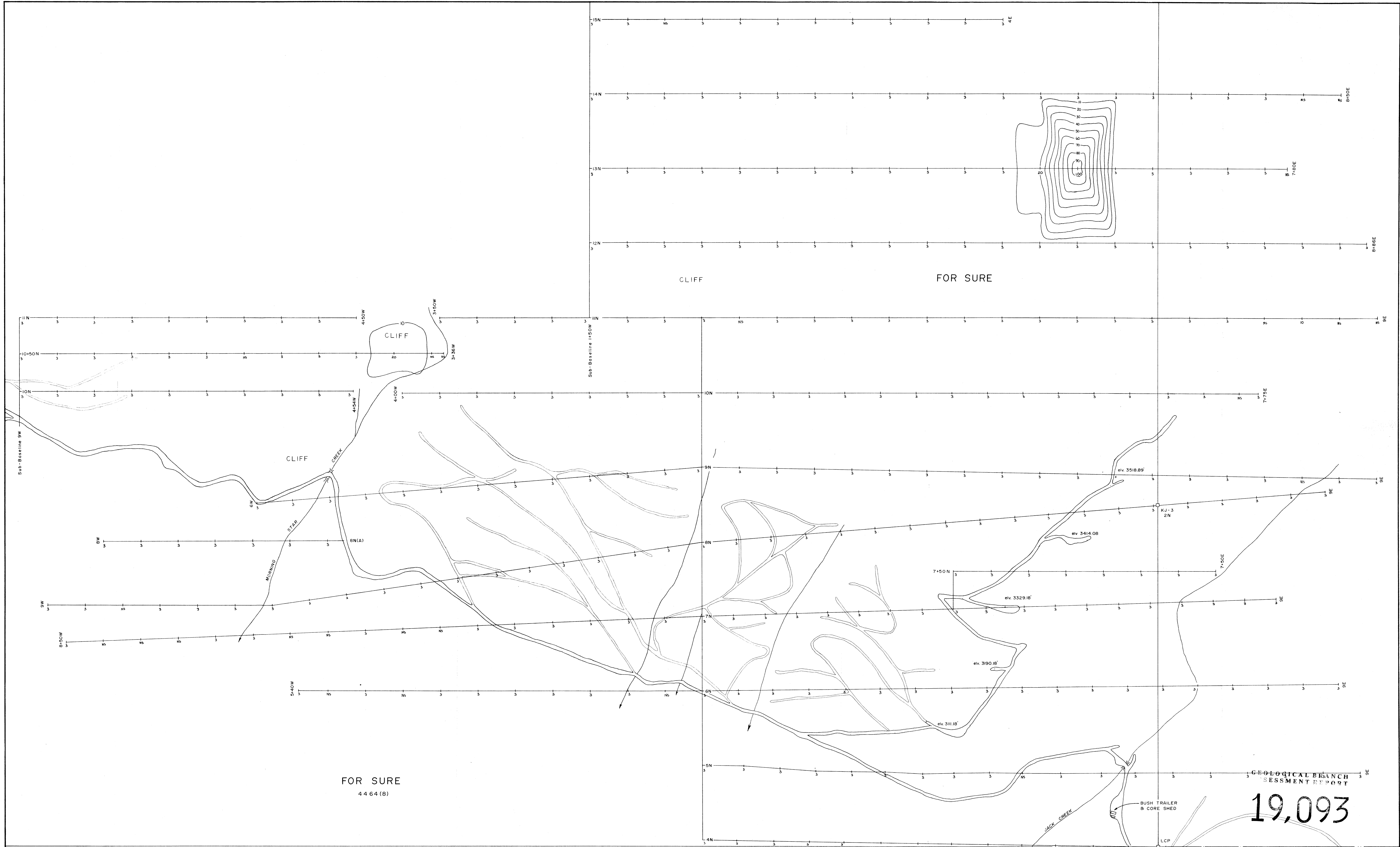
GEOLOGICAL BRANCH
ASSESSMENT REPORT

19,093

Part 3 of 3

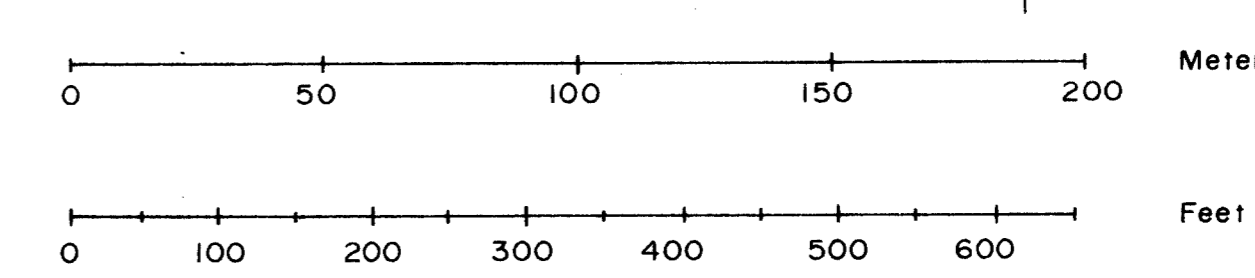
KING JACK RESOURCES LTD.	
FOR SURE AREA Ag GEOCHEM MAP (ppm)	
ANGINEL RESOURCES LTD.	
Drawn by: P.J. Santos, P.Eng.	Date: 1985
PLATE NO. 97	

Note: Surveyed by chain and Brunton compass.



Au Geochem
 MEAN 3.7 ppb
 STD. DEV. 5.1 ppb
 CONTOUR INTERVAL 10 ppb

KJ-1
 5509 (10)



Note: Surveyed by chain and Brunton compass.

GEOLOGICAL BRANCH
 ASSESSMENT REPORT
19,093

Part 3 of 3

KING JACK RESOURCES LTD.	
FOR SURE AREA Au GEOCHEM MAP (ppb)	
ANGINEL RESOURCES LTD.	
Drawn by: P.J. Santos, P.Eng	Date: 1989
PLATE NO. 96	