

LOG NO. 0927	ON
ACTION:	
FILE NO:	

CONTINENTAL GOLD CORP.

FILMED

ASSESSMENT REPORT

MBX 1-13 PLACER CLAIMS

MT. MILLIGAN PROPERTY

OMINECA MINING DIVISION

NTS 93N/1, 930/4

LATITUDE 55°08'N, LONGITUDE 124°04'

BY

19121

GEOLOGICAL BRANCH
ASSESSMENT REPORT

REBAGLIATI GEOLOGICAL CONSULTING LTD.

C.M. Rebagliati, P.Eng

September 20, 1989

TABLE OF CONTENTS

	<u>Page</u>
SUMMARY AND CONCLUSIONS	1
INTRODUCTION	1
LOCATION AND ACCESS	2
CLAIM DATA	3
SURFICIAL DEPOSITS	3
RECOMMENDATIONS	4
STATEMENT OF COSTS	5
STATEMENT OF QUALIFICATIONS	6

List of Figures

		<u>Following Page</u>
Figure 1	Location Map	2
Figure 2	Claim Map	2
Figure 3	Overburden Isopach	In pocket
Figure 4	Bedrock Surface Contour Plan	In pocket

List of Appendices

Appendix I	Overburden Drill Logs
------------	-----------------------

SUMMARY AND CONCLUSIONS

During the period November 18, 1988 to August 31, 1989 Continental Gold Corp. drilled 157 holes on the MBX 2-7 and 9 placer claims. A total cumulative length of 60,6250 metres of overburden was drilled in the 157 holes.

The Overburden thickness averages 39 metres and ranges from less than 10 m in the central western area to 120 metres in the east.

A bedrock topographic high coincides with the region with thin overburden, similarly deep overburden areas have lower bedrock elevations.

Average overburden drilling costs were \$58.98/m.

INTRODUCTION

This report describes a drilling program undertaken on the MBX 2-7 and 9 placer claims during the period November 18, 1989 to August 30, 1989.

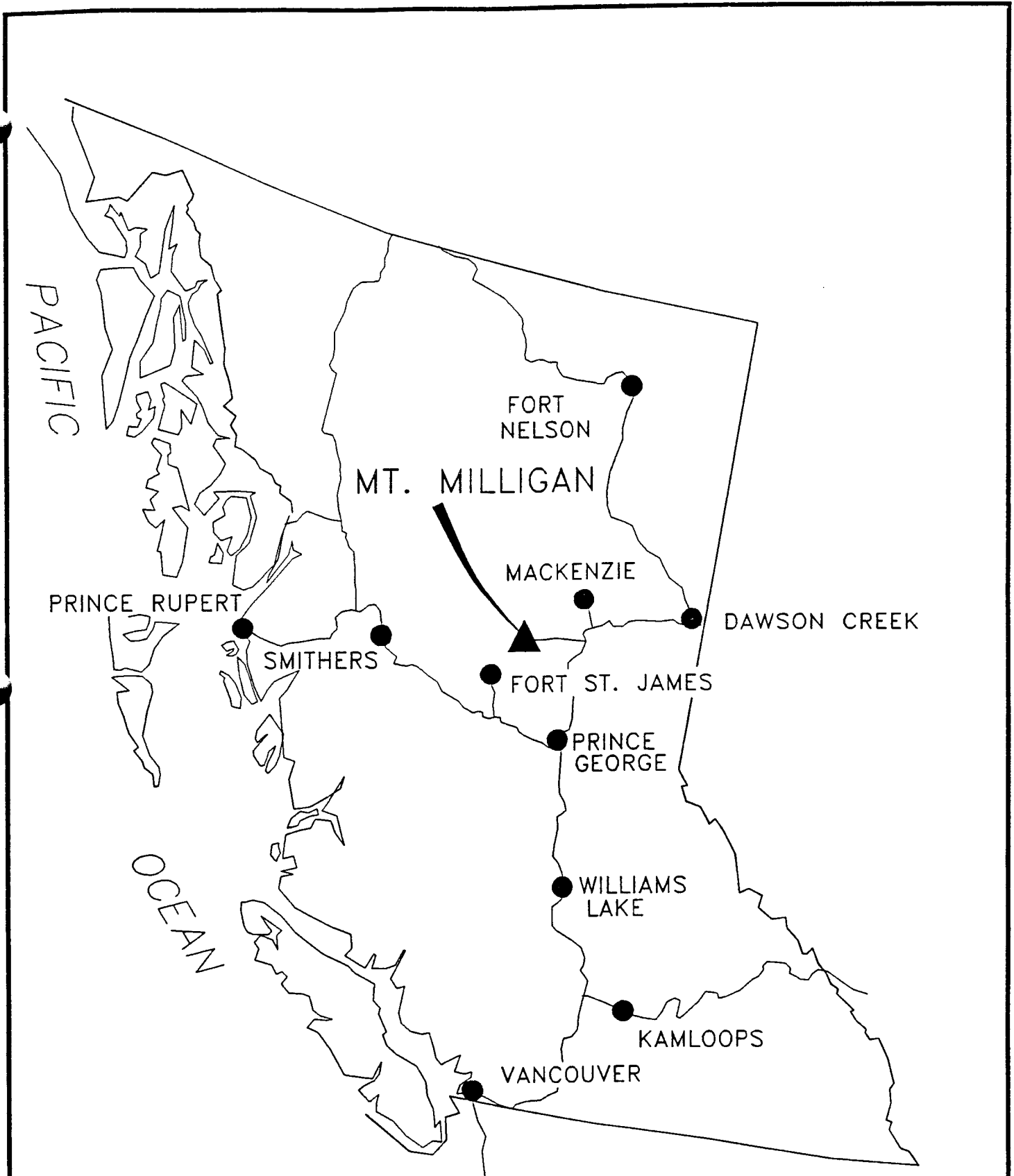
The azimuth, dip, length of overburden intersected and the cost of drilling the overburden portion of each hole is provided for holes 88-61 to 88-70 and 89-71 to 89-232. Abbreviated overburden logs, as provided by the diamond drillers, is included for 64 of the holes.

LOCATION AND ACCESS

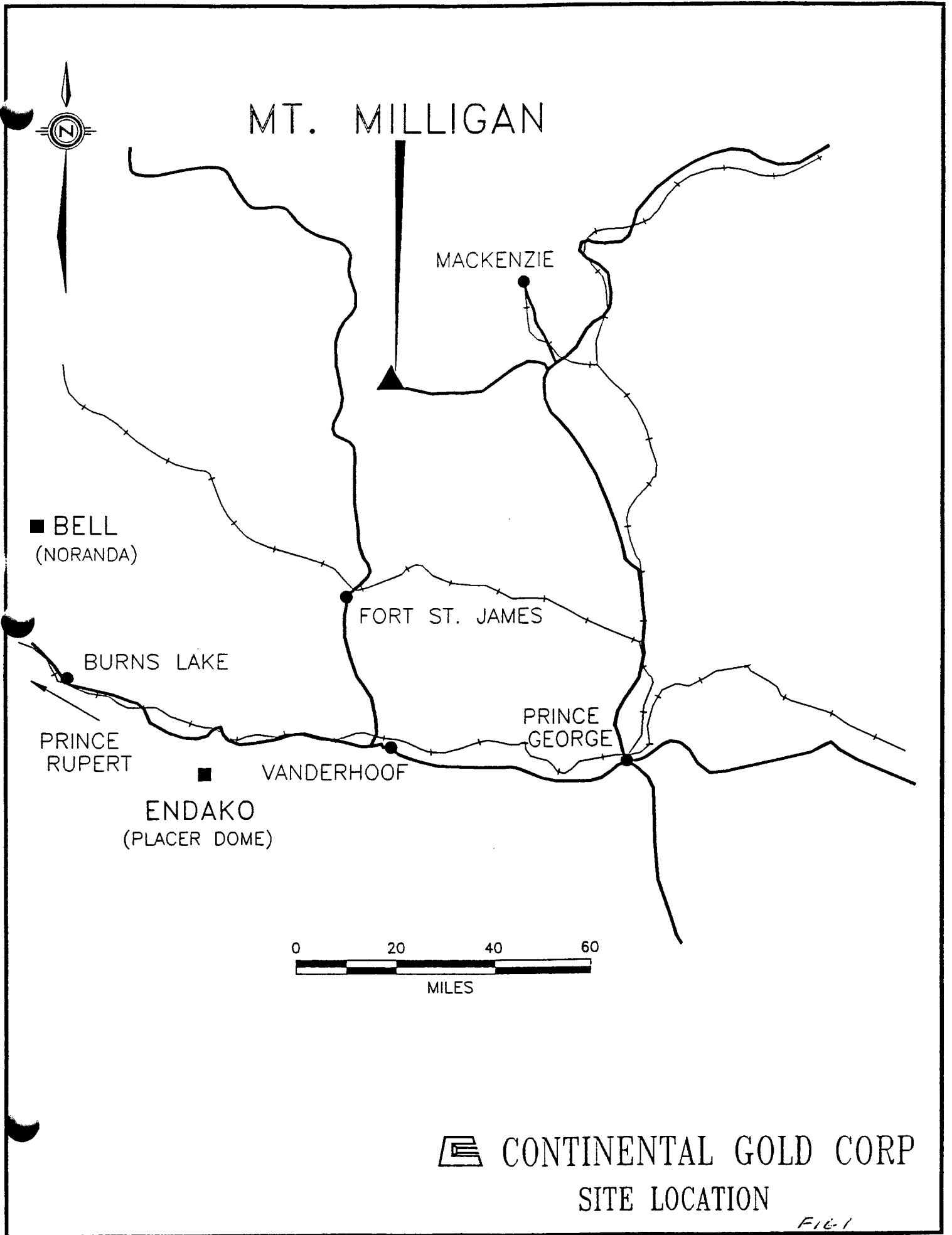
The Phil and Heidi claims are located at latitude 55°08'N and longitude 124°04'W in the Omineca Mining Division. They are approximately 95 km north of Fort St. James and 10 km southeast of the Nation River bridge on the Manson Creek Highway (NTS 93N/1, Figure 1).

Access to the property is by a gravel road which extends 10 km beyond the Rainbow Creek bridge at the end of the Philips North Main Line logging road. Access to the Philips Main Line is gained from Windy Point on Highway 97, approximately 150 km north of Prince George.

The Claims cover a series of northwest-trending ridges which extend from Mt. Milligan in the north to Rainbow Creek in the south. Local relief is in the order of 300 metres with an average elevation of 1,200 metres. Drainage from the property is either east to Rainbow Creek or West to Suschona Creek, then north to the Nation River. Vegetation consists of continuous dense growth of pine, fir, spruce, balsam, alder and aspen. The entire property is below treeline.



 CONTINENTAL GOLD CORP
GENERAL LOCATION MAP



 CONTINENTAL GOLD CORP
SITE LOCATION

FIG-1

CLAIM MAP
FIG. 2

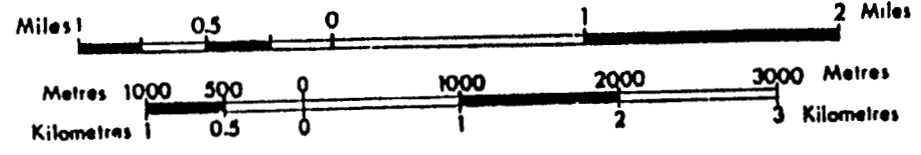


Province of British Columbia
Ministry of Energy, Mines and Petroleum Resources

LEGEND

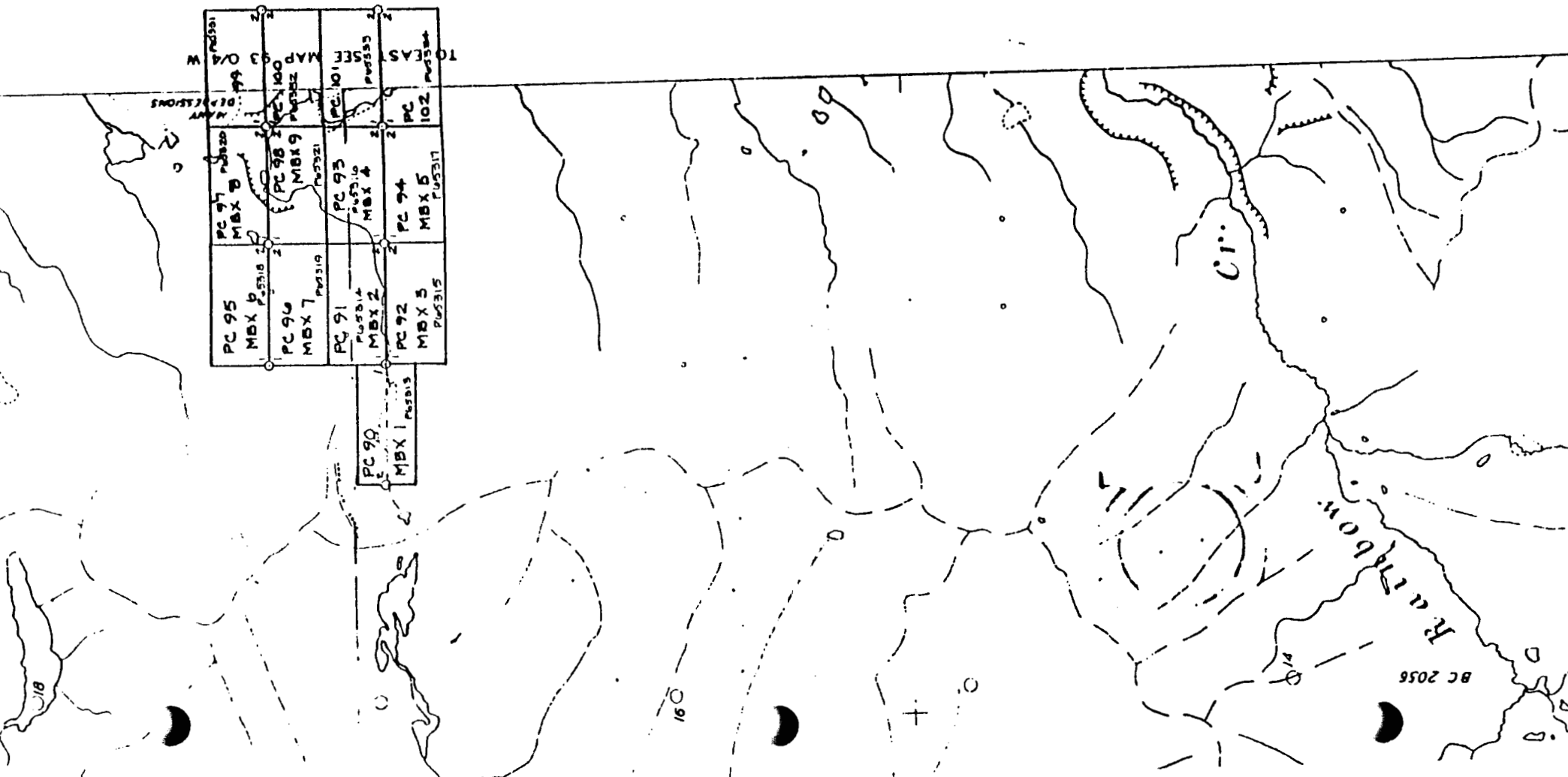
- CROWN GRANTED MINERAL CLAIM
- REVERTED C.G. MINERAL CLAIM
- FORFEITED MINERAL CLAIM
- VERIFIED LEGAL CORNER POST
- LEGAL SURVEY
- LEGAL CORNER POST & TAG NUMBER

C.O.
R. CO.
W.
S.



UNLESS VERIFIED OR SURVEYED, THE MAP POSITION
LEGAL CORNER POST IS BASED ON THE LOCATOR'S S
FOR FURTHER INFORMATION, APPLY TO THE OFFICE O
MINING DIVISION CONCERNED.

DATE OF MICROFILM: 1989-MAY-05



CLAIM DATA

The placer holdings comprise 13 placer claims.

Essential claim data are listed as follows:

<u>Claim</u>	<u>Record No.</u>	<u>Staking Date</u>	<u>Expiry *</u> <u>Date</u>
MBX 1	90	November 16, 1988	1991
MBX 2	91	November 16, 1988	1991
MBX 3	92	November 16, 1988	1991
MBX 4	93	November 16, 1988	1991
MBX 5	94	November 16, 1988	1991
MBX 6	95	November 16, 1988	1991
MBX 7	96	November 16, 1988	1991
MBX 8	97	November 16, 1988	1991
MBX 9	98	November 16, 1988	1991
MBX 10	99	November 24, 1988	1991
MBX 11	100	November 24, 1988	1991
MBX 12	101	November 24, 1988	1991
MBX 13	102	November 24, 1988	1991

* upon the acceptance of this report for assessment credits.

SURFICIAL DEPOSITS

Surficial deposits on the MBX placer claims are comprised of glacial till and fluvial-glacial sediments. Landforms include eskers, humochy terminal morain and benched terraces.

The glacial till is comprised of clay and boulders. Boulder sizes generally range downward from 35 cm in diameter. Only rarely do boulder sizes exceed 100 cm. Based on boulder lithology the till is commonly a mixture of local and distantly derived material.

The fluvial-glacial sediments are comprised of esker debris and sediments ranging from immature clay-rich gravels derived from till, to clean washed stratified silts, sands and gravels.

One hundred fifty-seven holes were drilled comprising 6,062.5 m of overburden. Abbreviated overburden logs for 64 holes as compiled by the diamond drillers while triconing through the overburden are contained in Appendix I.

Overburden thicknesses are shown on Figure 3 and bedrock elevations are plotted on Figure 4.

On the Following table, holes prefixed "88" and "89" were drilled in the year 1988 and 1989 respectively.

RECOMMENDATIONS

1. Continue to update figures 3 and 4 as drilling on the property continues.
2. Maintain the current system of logging the overburden segments of new drill holes.

STATEMENT OF COSTS

November 18, 1988 to August 30, 1989

Overburden Drilling 4-1/4 inch Tricone

157 holes totalling 6,062.5 m
of overburden @ \$58.99/m

\$357,687.33

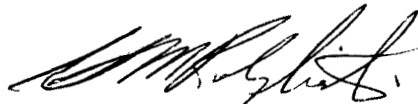
Total

\$357,687.33

STATEMENT OF QUALIFICATIONS

I, Clarence Mark Rebagliati, of 3536 West 15th Avenue, Vancouver, B.C. do hereby certify that:

1. I am a consulting Geologist Engineer with offices at 3536 West 15th Avenue, Vancouver, B.C.
2. I am a graduate of the Provincial Institute of Mining, Haileybury, Ontario (Mining Technology, 1966).
3. I am a graduate of the Michigan Technological University, Houghton, Michigan, USA (B.Sc., Geological Engineering, 1969).
4. I have practised my profession continuously since graduation.
5. I am a member in good standing of the Association of Professional Engineers of British Columbia.
6. The foregoing report is based on my personal supervision of property work carried out during the period October 15, 1988 August 31, 1989.



C.M. Rebagliati, P.Eng.
September 21, 1989

APPENDIX I

OVERBURDEN DRILL LOGS
DRILL HOLE DATA AND INDIVIDUAL HOLE COSTS

DIAMOND DRILLING INFORMATION TABLE

CONTINENTAL GOLD CORPORATION
MT. MILLIGAN PROJECT

Overburden holes plotted on assessment maps
Holes with logs are indicated by an asterix.

Hole No.	AZIMUTH	DIP (-)	OB (metres)	Cost (\$59/m)
88-61	275-35-58	45-00-00	62.50	\$3,687.50
88-62	270-00-00	45-00-00	68.60	\$4,047.26
88-63	270-00-00	45-00-00	21.34	\$1,259.15
88-64	270-00-00	45-00-00	35.98	\$2,122.56
88-65	270-00-00	45-00-00	59.15	\$3,489.63
88-66	111-05-32	45-00-00	15.24	\$899.39
88-67	270-00-00	45-00-00	64.02	\$3,777.44
88-68	270-00-00	80-00-00	9.45	\$557.62
88-69	270-00-00	45-00-00	76.83	\$4,532.93
88-70	270-00-00	80-00-00	25.30	\$1,492.99
89-71	270-00-00	45-00-00	77.74	\$4,586.89
89-72	270-00-00	45-00-00	91.46	\$5,396.34
89-73	270-00-00	45-00-00	96.34	\$5,684.15
89-74	280-46-30	44-36-48	64.02	\$3,777.44
89-75	270-00-00	45-00-00	64.63	\$3,813.41
89-76	270-00-00	45-00-00	89.63	\$5,288.41
89-77	277-41-46	44-21-04	28.35	\$1,672.87
89-78	270-00-00	45-00-00	22.56	\$1,331.10
89-79	270-00-00	45-00-00	9.76	\$575.61
89-80	266-01-39	45-00-00	77.13	\$4,550.91
89-81	261-12-09	44-19-05	16.46	\$971.34
89-82	270-00-00	45-25-46	66.16	\$3,903.35
89-83	256-50-36	45-09-17	52.13	\$3,075.91
89-84	259-04-26	45-23-38	37.50	\$2,212.50
89-85	260-36-36	44-04-06	9.76	\$575.61
89-86	272-04-12	46-10-59	7.01	\$413.72
89-87	260-56-39	48-21-32	9.76	\$575.61
89-88	276-33-59	45-00-00	43.29	\$2,554.27
89-89	256-50-36	70-00-00	64.02	\$3,777.44
89-90	093-35-44	44-50-41	16.46	\$971.34
89-91	267-29-44	44-59-18	10.98	\$647.56
89-92	265-14-11	42-56-00	58.54	\$3,453.66
89-93	267-55-03	45-00-00	85.37	\$5,036.59
*89-94	269-12-15	45-00-00	9.76	\$575.61
*89-95	272-23-09	44-56-47	6.71	\$395.73
89-96	262-17-21	44-31-12	9.15	\$539.63
*89-97	279-46-57	43-22-06	9.15	\$539.63
89-98	270-00-00	71-09-31	3.66	\$215.85
89-99	271-49-06	69-06-08	7.32	\$431.71
89-100	266-02-27	41-17-03	10.06	\$593.60

*89-101	273-00-00	43-42-28	55.49	\$3,273.78
89-102	270-47-45	43-21-48	8.23	\$485.67
89-103	267-15-07	43-35-29	12.20	\$719.51
*89-104	275-00-00	46-15-26	61.89	\$3,651.52
89-105	269-02-43	55-05-51	14.02	\$827.44
89-106	274-00-00	43-34-47	6.71	\$395.73
89-107	266-08-04	44-55-22	101.22	\$5,971.95
89-108	274-00-00	45-00-00	15.24	\$899.39
89-109	271-28-08	44-16-29	65.55	\$3,867.38
*89-110	109-37-15	44-47-39	21.34	\$1,259.15
*89-111	262-04-14	44-36-37	64.94	\$3,831.40
*89-112	268-58-37	46-00-02	73.78	\$4,353.05
*89-113	272-00-00	45-13-58	46.65	\$2,752.13
*89-114	094-28-02	44-32-55	14.33	\$845.43
89-115	267-30-38	44-53-32	64.63	\$3,813.41
*89-116	272-00-00	44-07-55	40.55	\$2,392.38
89-117	094-11-06	47-39-47	55.49	\$3,273.78
89-118	270-00-00	45-00-00	41.77	\$2,464.33
*89-119	266-11-09	44-21-23	34.45	\$2,032.62
89-120	267-16-25	46-19-56	50.00	\$2,950.00
89-121	093-56-43	43-30-06	58.54	\$3,453.66
*89-122	268-07-20	45-27-57	40.55	\$2,392.38
89-123	093-14-23	44-27-16	23.78	\$1,403.05
*89-124	267-57-17	45-20-20	95.73	\$5,648.17
*89-125	089-18-16	45-00-00	62.50	\$3,687.50
*89-126	268-40-59	45-19-39	78.05	\$4,604.88
89-127	093-06-39	43-24-00	57.93	\$3,417.68
*89-128	087-40-42	45-45-50	50.61	\$2,985.98
*89-129	096-28-59	43-40-04	18.29	\$1,079.27
*89-130	271-00-00	43-55-57	71.65	\$4,227.13
*89-131	004-31-21	46-09-12	98.17	\$5,792.07
*89-132	262-00-00	48-18-39	28.35	\$1,672.87
89-133	097-45-55	43-40-04	38.11	\$2,248.48
*89-134	267-00-00	45-00-00	44.21	\$2,608.23
*89-135	268-34-04	47-04-12	60.06	\$3,543.60
89-136	270-00-00	46-58-30	6.10	\$359.76
*89-137	268-40-04	45-39-31	32.62	\$1,924.70
89-138	355-21-07	44-57-18	28.66	\$1,690.85
*89-139	269-00-00	44-09-27	36.59	\$2,158.54
*89-140	270-23-45	44-58-14	73.17	\$4,317.07
89-141	358-07-50	44-19-00	34.15	\$2,014.63
89-142	085-50-35	44-33-08	13.11	\$773.48
*89-143	094-02-12	68-22-36	6.71	\$395.73
*89-144	359-48-45	45-59-28	34.15	\$2,014.63
89-145	269-41-47	44-58-58	4.57	\$269.82
*89-146	271-47-53	45-14-01	14.02	\$827.44
*89-147	268-01-22	45-09-03	26.22	\$1,546.95
89-148	090-40-21	45-48-23	6.10	\$359.76
*89-149	268-31-33	44-29-45	41.77	\$2,464.33
*89-150	267-12-49	45-09-09	31.10	\$1,834.76

*89-151	268-33-25	45-21-15	51.52	\$3,039.94
*89-152	271-30-40	43-02-35	4.27	\$251.83
89-153	269-38-58	44-48-26	12.20	\$719.51
*89-154	270-59-54	46-28-12	29.27	\$1,726.83
*89-155	269-52-07	45-05-40	104.57	\$6,169.82
*89-156	359-38-53	45-03-06	28.05	\$1,654.88
*89-157	270-23-24	45-22-19	52.74	\$3,111.89
*89-158	268-03-07	45-56-08	57.62	\$3,399.70
89-159	276-27-26	43-07-33	32.93	\$1,942.68
89-160	271-11-04	45-28-42	70.73	\$4,173.17
89-161	265-36-04	45-00-29	112.80	\$6,655.49
*89-162	276-00-00	50-00-00	7.32	\$431.71
*89-163	272-52-38	44-22-09	34.15	\$2,014.63
*89-164	097-14-49	54-29-22	6.71	\$395.73
89-165	357-50-02	44-44-32	6.71	\$395.73
*89-166	270-08-27	46-37-17	28.05	\$1,654.88
*89-167	270-44-24	44-38-57	112.80	\$6,655.49
89-168	082-30-15	48-56-29	5.18	\$305.79
89-169	270-00-00	46-38-12	11.28	\$665.55
89-170	180-00-00	45-23-42	14.02	\$827.44
*89-171	267-39-46	46-11-37	92.99	\$5,486.28
*89-172	356-16-07	44-22-13	19.51	\$1,151.22
89-173	090-00-00	45-00-00	50.91	\$3,003.96
89-174	088-32-57	45-31-10	10.06	\$593.60
89-175	088-46-52	45-43-49	79.57	\$4,694.82
89-176	087-45-43	43-26-44	5.18	\$305.79
89-177	270-00-00	85-00-00	30.79	\$1,816.77
89-178	088-49-42	62-48-52	41.46	\$2,446.34
89-179	088-16-58	46-45-04	14.02	\$827.44
89-180	266-54-20	45-41-36	27.44	\$1,618.90
89-181	270-14-35	46-09-23	48.78	\$2,878.05
89-182	180-47-24	44-10-28	4.88	\$287.80
*89-183	090-00-00	70-00-00	34.15	\$2,014.63
89-184	268-00-05	45-25-12	61.59	\$3,633.54
*89-185	269-01-23	45-56-41	54.88	\$3,237.80
*89-186	089-06-16	44-33-25	25.61	\$1,510.98
89-187	270-00-00	45-00-00	31.10	\$1,834.76
*89-188	-----	90-00-00	36.59	\$2,158.54
89-189	270-29-12	45-46-37	67.07	\$3,957.32
*89-190	270-03-26	45-18-43	62.80	\$3,705.49
89-191	270-00-00	45-00-00	46.34	\$2,734.15
*89-192	266-01-46	47-02-43	105.79	\$6,241.77
89-193	267-54-07	41-22-57	18.90	\$1,115.24
89-194	269-45-31	44-52-16	68.60	\$4,047.26
89-195	266-50-47	44-55-21	23.17	\$1,367.07
89-196	180-10-15	45-01-18	3.96	\$233.84
*89-197	269-30-09	45-24-50	25.91	\$1,528.96
89-198	092-01-00	44-14-29	3.66	\$215.85

*89-201	268-47-24	45-09-17	64.02	\$3,777.44
*89-204	090-01-54	45-38-50	16.77	\$989.33
89-205	088-01-50	44-39-44	28.66	\$1,690.85
*89-208	270-52-53	42-40-02	15.85	\$935.37
*89-209	090-39-58	45-00-00	9.15	\$539.63
89-211	090-54-34	45-00-00	10.37	\$611.59
*89-212	267-23-51	43-40-04	25.00	\$1,475.00
*89-215	087-36-51	45-07-05	6.10	\$359.76
89-216	-----	90-00-00	15.24	\$899.39
*89-218	271-28-08	46-25-56	31.10	\$1,834.76
89-219	274-45-49	44-23-49	99.70	\$5,882.01
*89-220	268-36-10	46-21-50	25.61	\$1,510.98
89-222	268-57-40	45-30-00	31.10	\$1,834.76
89-223	179-55-08	45-28-25	8.54	\$503.66
89-224	269-08-42	45-00-00	32.01	\$1,888.72
*89-226	271-23-50	46-21-50	40.24	\$2,374.39
*89-228	268-51-20	44-56-21	53.66	\$3,165.85
89-229	088-42-19	42-36-10	8.23	\$485.67
*89-232	269-05-29	45-38-49	5.18	\$305.62

=====

TOTALS			6062.50 m	\$357,687.33
--------	--	--	-----------	--------------

=====

CONTINENTAL GOLD CORPORATION
Mt. Milligan Project

Overburden Drill Logs (from drillers observations)

Drill Hole: 89-94

0.00 - 9.75 Boulders, gravel (+- clay?)

Drill Hole: 89-95

0.00 - 6.71 Moderately coarse sand and gravel

Drill Hole: 89-97

0.00 - 9.75 Sand, broken rock, boulders

Drill Hole: 89-101

0.00 - 18.29 Boulders
18.29 - 39.62 Gravel, clay
39.62 - 51.82 Clay
51.82 - 55.47 Soft bedrock, weathered bedrock

Drill Hole: 89-104

0.00 - 61.87 Mixed boulders, gravel (+- clay)

Drill Hole: 89-110

0.00 - 21.34 Predominately coarse gravel

Drill Hole: 89-111

0.00 - 64.92 Gravel, clay, small boulders

Drill Hole: 89-112

0.00 - 73.76 Till with 1.5m boulder at 30.5 m depth

Drill Hole: 89-113

0.00 - 9.75 Gravel, boulders under 0.5m
9.75 - 15.80 Gravel, boulders under 0.5m
15.80 - 28.00 Gravel, many boulders under 0.5m
28.00 - 34.00 Gravel, many small boulders
34.00 - 40.23 Gravel, minor small boulders

Drill Hole: 89-114

0.00 - 6.10 Coarse gravel

Drill Hole: 89-116

0.00 - 3.96 Many small boulders
3.96 - 10.00 Hole caving
10.00 - 11.89 Hole caving
11.89 - 12.80 Large boulder
12.80 - 16.15 Gravel, clay, small boulders
16.15 - 22.25 Small 5 cm boulders
22.25 - 28.00 Small boulders, small gravel, sand, clay
28.00 - 34.40 Boulders, gravel, clay

Drill Hole: 89-119

0.00 - 16.15 Small boulders, gravel
16.15 - 28.96 Compact clay
28.96 - 32.00 Gravel, sand, clay
32.00 - 34.44 Clay

Drill Hole: 89-122

0.00 - 3.96 Gravel, small boulders greater than 30 cm
3.96 - 22.25 Coarse gravel, boulders greater than 30 cm
22.25 - 34.44 Gravel, clay, small boulders
34.44 - 40.54 Soft oxidized bedrock

Drill Hole: 89-124

0.00 - 9.75 Boulders
9.75 - 43.25 Sand, clay, hardpan, 1.5m of boulders @ 23.2m
43.25 - 73.71 Clay, sand
73.71 - 95.71 Sand and hardpan

Drill Hole: 89-125

0.00 - 16.46 Gravel, small boulders
16.46 - 18.29 Clay
18.29 - 27.43 Sand, gravel, small boulders
27.43 - 57.30 Clay, minor sand
57.30 - 62.48 Gravel, boulders

Drill Hole: 89-126

0.00 - 12.80 Clay, gravel, small boulders (0.15 - 0.30 cm)
12.80 - 18.90 Hardpan, 0.6m boulders
18.90 - 31.09 Boulders, hardpan
31.09 - 43.28 Hardpan, gravel
43.28 - 58.52 Hardpan, clay
58.52 - 78.03 Red clay, hardpan, swelling clay

Drill Hole: 89-128

0.00 - 9.75 Gravel, sand
9.75 - 18.90 Sand, clay
18.90 - 21.95 Hardpan
21.95 - 28.04 Clay, coarse sand
28.04 - 31.09 Clay, hardpan
31.09 - 34.14 Gravel, coarse sand
34.14 - 50.60 Red clay, hardpan, 1.2m boulder @ 37.19m

Drill Hole: 89-129

0.00 - 18.29 Cobbles, boulders

Drill Hole: 89-130

0.00 - 32.00 Gravel, small boulders, sand
32.00 - 33.53 Boulders
33.53 - 49.38 Gravel, sand, minor boulders
49.38 - 60.96 Boulders, sand, clay
60.96 - 64.62 Boulders
64.62 - 71.32 Clay, sand, gravel (possible bedrock fault?)

Drill Hole: 89-131

0.00 - 9.75 Boulders, clay, gravel
9.75 - 18.89 Boulders, hardpan
18.89 - 21.93 Clay
21.93 - 24.98 Sand
24.98 - 31.07 Clay
31.07 - 37.16 Hardpan
37.16 - 43.25 Clay, hardpan
43.25 - 49.35 Clay, sand
49.35 - 52.39 Clay
52.39 - 61.53 Clay, hardpan
61.53 - 76.76 Clay, sand, gravel, hardpan
76.76 - 95.04 Hardpan, clay, swelling clay
95.04 - 104.24 Hardpan, triconed bedrock

Drill Hole: 89-132

0.00 - 9.10 Gravel, sand, small boulders
9.10 - 15.20 Gravel, mud, boulders
15.20 - 18.30 Gravel, sand
18.30 - 28.04 Gravel, boulders

Drill Hole: 89-134

0.00 - 6.30 Gravel, boulders under 0.5m
6.30 - 12.60 Clay
12.60 - 18.80 Gravel, boulders under 0.5m
18.80 - 25.10 Clay
25.10 - 31.40 Gravel, boulders under 0.5m
31.40 - 44.20 Red clay

Drill Hole: 89-135

0.00 - 60.05 Mostly clay, gravel, sand; 1m boulder @ 15.2m

Drill Hole: 89-137

0.00 - 3.70 Boulders, gravel
3.70 - 6.70 Boulders, clay
6.70 - 15.80 Boulders, hardpan
15.80 - 18.90 Boulders, clay
18.90 - 28.00 Red clay
28.00 - 32.61 Hardpan, clay

Drill Hole: 89-139

0.00 - 9.20 Gravel, sand
9.20 - 15.50 Gravel, small boulders under 0.5m
15.50 - 33.53 Gravel, clay, boulders under 0.5m
33.53 - 37.00 Many small boulders under 0.5m
37.00 - 43.00 Boulders, clay, gravel
43.00 - 50.00 Red clay

Drill Hole: 89-140

0.00 - 6.70 Mud, boulders
6.70 - 9.75 Gravel, boulders
9.75 - 15.85 Hardpan, boulders
15.85 - 25.00 Clay, hardpan, boulders
25.00 - 40.23 Hardpan, boulders
40.23 - 58.52 Gravel, clay hardpan
58.52 - 73.15 Clay, pan

Drill Hole: 89-143

0.00 - 6.71 Coarse sand, gravel

Drill Hole: 89-144

0.00 - 3.66 Gravel
3.66 - 6.71 Gravel, clay
6.71 - 10.97 Gravel, clay
10.97 - 12.80 Clay, hardpan
12.80 - 15.85 Boulder, hardpan
15.85 - 18.90 Clay, hardpan
18.90 - 21.95 Boulder, hardpan
21.95 - 25.00 Hardpan
25.00 - 28.04 Clay, boulders
28.04 - 31.09 Hardpan, boulders
31.09 - 34.14 Hardpan

Drill Hole: 89-146

0.00 - 9.14 Gravel, boulders
9.14 - 12.19 Hardpan
12.19 - 15.24 Gravel, boulders

Drill Hole: 89-147

0.00 - 3.66 Gravel
3.66 - 6.71 Boulders, sand
6.71 - 9.75 Boulder, gravel
9.75 - 12.80 Boulder, gravel
12.80 - 15.85 Boulder, hardpan
15.85 - 18.90 Boulders
18.90 - 21.95 Boulders, hardpan
21.95 - 25.00 Hardpan
25.00 - 28.04 Boulders, hardpan
28.04 - 32.61 Boulders, hardpan

Drill Hole: 89-149

0.00 - 3.05 Gravel
3.05 - 6.10 Gravel, boulders
6.10 - 9.14 Gravel, boulders, sand
9.14 - 12.19 Sand, clay
12.19 - 15.24 Sand, clay, hardpan
15.24 - 18.29 Gravel, sand
18.29 - 21.33 Gravel, boulders
21.33 - 24.38 Sand, clay, boulders
24.38 - 30.48 Gravel, clay, boulders
30.48 - 33.53 Sand, gravel, boulders
33.53 - 39.62 Red clay
39.62 - 41.76 Red clay

Drill Hole: 89-150

0.00 - 3.66 Sand, clay
3.66 - 6.71 Clay, boulders
6.71 - 15.85 Clay, hardpan
15.85 - 21.85 Clay, gravel
21.95 - 41.76 Clay, hardpan

Drill Hole: 89-151

0.00 - 3.05 Gravel
3.05 - 6.10 Gravel, large boulders
6.10 - 9.14 Gravel, hardpan
9.14 - 12.19 Gravel, clay
12.19 - 15.24 Clay, boulders
15.24 - 18.29 Gravel, boulders, clay
18.29 - 21.34 Boulders
21.34 - 24.38 Gravel, boulders
24.38 - 27.43 Gravel, clay, hardpan
27.43 - 30.48 Hardpan, clay
30.48 - 36.58 Clay, light boulders
36.58 - 39.62 Clay
39.62 - 48.77 Clay, small boulders
48.77 - 51.51 Clay, sand

Drill Hole: 89-152

0.00 - 4.27 Gravel, clay

Drill Hole: 89-154

0.00 - 6.71 Sand, gravel
6.71 - 12.80 Clay
12.80 - 31.09 Clay, hardpan

Drill Hole: 89-155

0.00 - 12.20 Gravel, rocks
12.20 - 15.24 Gravel, sand, boulders
15.24 - 18.29 Coarse gravel, clay
18.29 - 24.38 Boulders, clay, coarse gravel
24.38 - 45.72 Fine gravel, coarse gravel, boulders, sand
45.72 - 57.82 Boulders
57.82 - 60.96 Boulders, gravel, sand
60.96 - 76.20 Clay, sand
76.20 - 82.30 Clay
82.30 - 85.34 Clay, fine gravel
85.34 - 88.39 Clay, fine gravel, sand
88.39 - 94.49 Fine gravel
94.49 - 97.53 Coarse gravel, sand
97.53 - 103.63 Clay, boulders

Drill Hole: 89-156

0.00 - 9.75 Sand, medium gravel
9.75 - 15.85 Hardpan clay
15.85 - 21.95 Boulders
21.95 - 25.00 Clay
25.00 - 28.40 Reamed bedrock

Drill Hole: 89-157

0.00 - 15.24 Gravel, hardpan
15.24 - 18.29 Boulders, sand
18.29 - 24.38 Sand, gravel, clay
24.38 - 30.48 Clay boulders, gravel
30.48 - 33.53 Gravel
33.53 - 36.58 Gravel, boulders
36.58 - 39.63 Gravel, clay
39.63 - 45.72 Red clay, boulders
45.72 - 48.79 Red clay, sand
48.79 - 52.73 Red clay

Drill Hole: 89-158

0.00 - 3.66 Sand, gravel
3.66 - 9.75 Gravel, boulders
9.75 - 12.80 Hardpan, boulders
12.80 - 18.90 Clay, hardpan, boulders
18.90 - 21.95 Hardpan
21.95 - 31.09 Hardpan, boulders
31.09 - 40.23 Hardpan
40.23 - 49.38 Gravel, boulders
49.38 - 57.61 Red clay, hardpan

Drill Hole: 89-162

0.00 - 7.32 Gravel, sand, a few boulders

Drill Hole: 89-163

0.00 - 6.71 Gravel, boulders
6.71 - 12.80 Boulders, hardpan
12.80 - 15.85 Boulders
15.85 - 18.90 Hardpan
18.90 - 34.14 Clay, hardpan

Drill Hole: 89-164

0.00 - 7.31 Gravel, sand, a few boulders

Drill Hole: 89-166

0.00 - 6.71 Gravel, boulders
6.71 - 9.75 Gravel, sand
9.75 - 12.19 Boulders, clay
12.19 - 18.90 Gravel, boulders
18.90 - 21.95 Hardpan
21.95 - 28.04 Boulders, hardpan

Drill Hole: 89-167

0.00 - 60.00 Mainly gravel
60.00 - 95.00 Clay, lesser sand, gravel
95.00 - 104.00 Sand, gravel
104.00 - 117.35 Boulders, clay

Drill Hole: 89-171

0.00 - 18.00 Coarse gravel
18.00 - 62.00 Gravel
62.00 - 73.00 Clay
73.00 - 79.00 Coarse gravel
79.00 - 92.96 Sand

Drill Hole: 89-172

0.00 - 6.70 Boulder, gravel, sand
6.70 - 12.80 Boulder, hardpan
12.80 - 19.51 Hardpan

Drill Hole: 89-183

0.00 - 4.88 Gravel, boulders
4.88 - 18.90 Clay
18.90 - 34.14 Hardpan

Drill Hole: 89-185

0.00 - 15.20 Coarse gravel, sand, clay
15.20 - 18.30 Boulders, clay
18.30 - 25.90 Clay
25.90 - 27.40 Boulders
27.40 - 36.60 Boulders, coarse gravel
36.60 - 42.67 Gravel, few boulders
42.67 - 45.72 Gravel
45.72 - 48.77 Gravel, small boulders
48.77 - 51.82 Clay, sand, gravel
51.82 - 53.04 Sand, gravel

Drill Hole: 89-186

0.00 - 4.27 Clay, gravel, boulders
4.27 - 16.46 Clay, rocks
16.46 - 21.34 Stones, clay
21.34 - 24.38 Rocks, clay, sand

Drill Hole: 89-188

0.00 - 12.80 Clay, boulders
12.80 - 18.90 Clay, hardpan
18.90 - 31.39 Clay
31.39 - 36.58 Hardpan

Drill Hole: 89-190

0.00 - 4.57 Small boulders, sand, clay
4.57 - 7.62 Small boulders, gravel
7.62 - 10.67 Gravel, boulders, clay
10.67 - 21.34 Clay and rocks
21.34 - 27.43 Coarse gravel
27.43 - 33.53 Boulders, coarse gravel
33.53 - 36.58 Boulders, gravel, clay
36.58 - 51.82 Hard boulders, coarse gravel
51.82 - 54.86 Red clay
54.86 - 68.48 Gravel

Drill Hole: 89-192

0.00 - 3.05 Gravel
3.05 - 18.29 Clay, boulders
18.29 - 60.96 Boulders, hardpan
60.96 - 105.80 Hardpan, clay

Drill Hole: 89-197

0.00 - 4.27 Boulders, gravel
4.27 - 19.50 Small boulders, gravel, minor clay
19.50 - 25.90 Boulders, gravel

Drill Hole: 89-201

0.00 - 10.36 Gravel, small boulders
10.36 - 13.41 Clay, gravel
13.41 - 36.58 Gravel, sand, boulders
36.58 - 39.01 Clay
39.01 - 47.55 Gravel, boulders
47.55 - 49.38 Red clay
49.38 - 58.22 Gravel, boulders
58.22 - 64.00 Clay, gravel

Drill Hole: 89-204

0.00 - 4.60 Fill, wood, soil, sand, gravel, clay
4.60 - 15.80 Rock rubble, clay
15.80 - 16.80 Triconed bedrock

Drill Hole: 89-208

0.00 - 24.00 Gravel, boulders

Drill Hole: 89-209

0.00 - 2.10 Soil, sand, gravel, rock
2.10 - 9.10 Clay, rocks

Drill Hole: 89-212

0.00 - 28.04 Gravel, boulders; hardpan, clay at bottom

Drill Hole: 89-215

0.00 - 4.60 Soil, gravel, boulders
4.60 - 6.10 Casing

Drill Hole: 89-218

0.00 - 9.75 Gravel, clay
9.75 - 12.80 Clay, hardpan
12.80 - 21.95 Hardpan
21.95 - 25.00 Clay, sand
25.00 - 28.04 Hardpan, gravel
28.04 - 31.09 Hardpan, clay

Drill Hole: 89-220

0.00 - 6.70 Clay, gravel
6.70 - 9.75 Clay, hardpan
9.75 - 12.80 Boulder
12.80 - 25.60 Boulders, hardpan

Drill Hole: 89-226

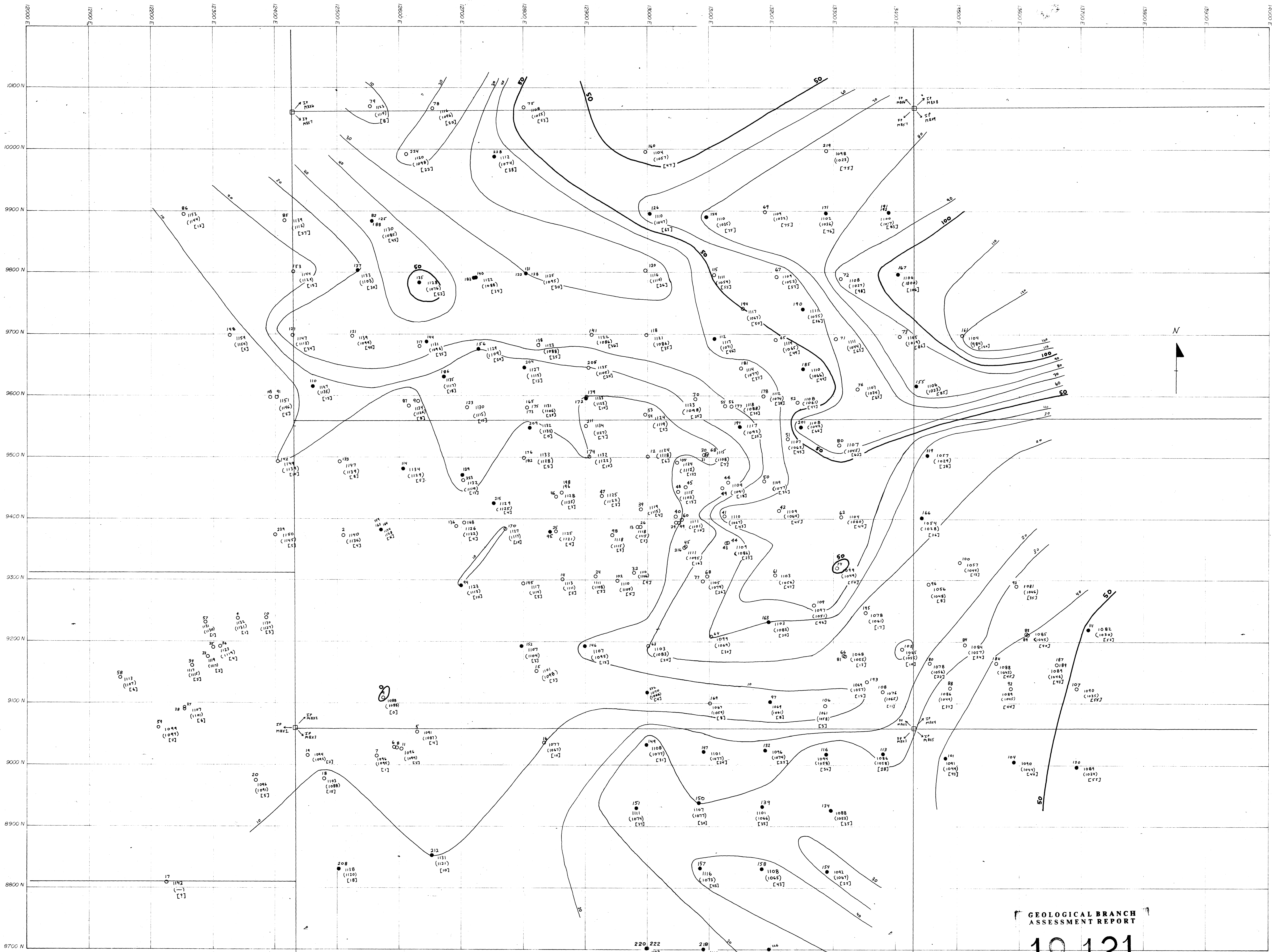
0.00 - 9.75 Clay, gravel
9.75 - 18.90 Clay, hardpan
18.90 - 21.95 1.2m boulders
21.95 - 34.14 Clay
34.14 - 40.23 Clay, hardpan

Drill Hole: 89-228

0.00	-	11.58	Gravel, boulders
11.58	-	15.84	Gravel
15.84	-	18.90	Rocks, clay
18.90	-	20.73	Sand
20.73	-	27.43	Gravel, rocks
27.43	-	28.65	Red clay
28.65	-	30.18	Gravel
30.18	-	33.53	Clay
33.53	-	48.77	Gravel
48.77	-	51.82	Clay, boulders

Drill Hole: 89-232

0.00	-	5.18	Sand, clay
------	---	------	------------



GEOLOGICAL BRANCH
ASSESSMENT REPORT

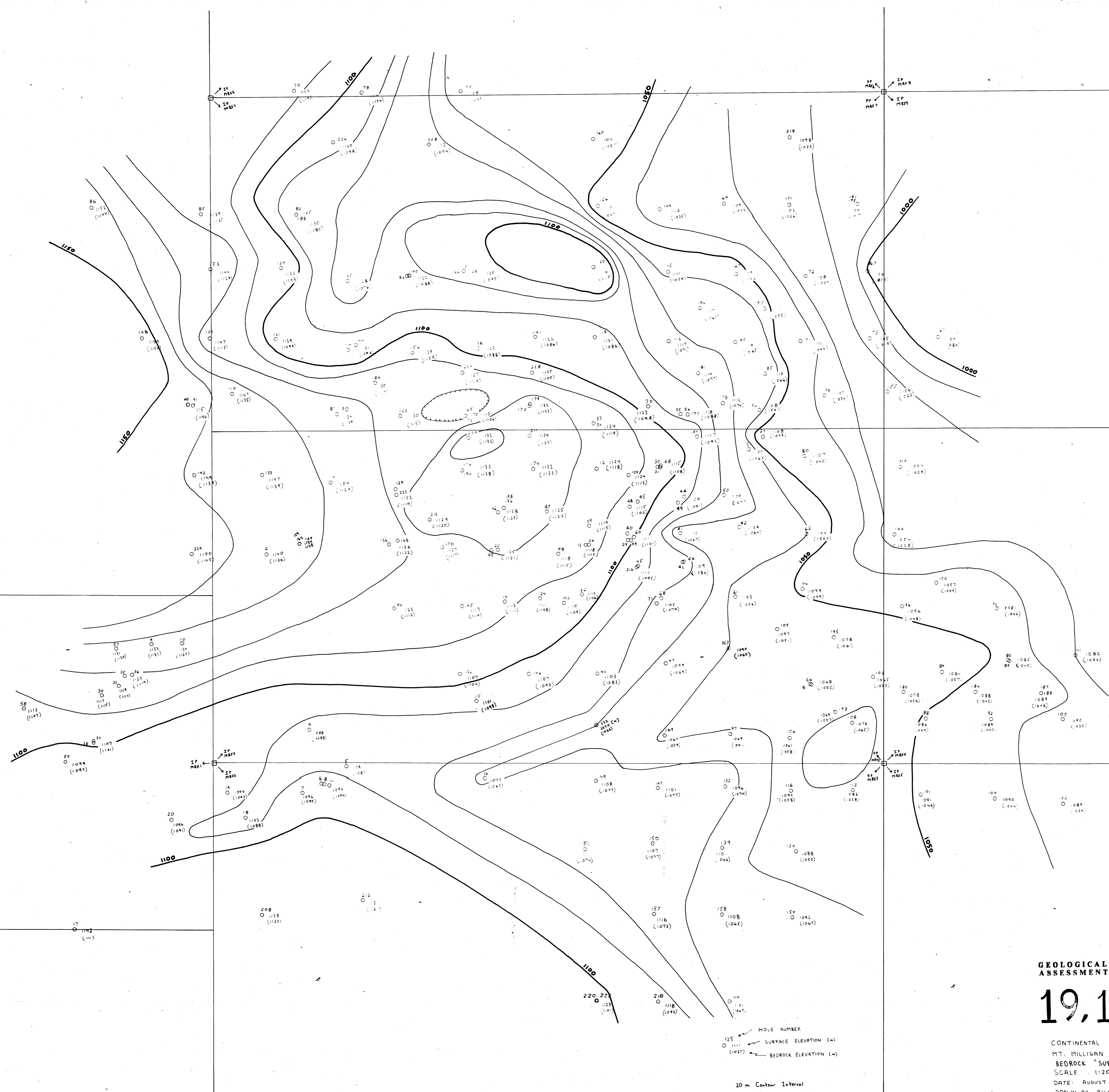
19,121

125 HOLE NUMBER
 O SURFACE ELEVATION (-)
 (1037) BEDROCK ELEVATION (-)
 [34] OVERBURDEN THICKNESS (-)

10 m Contour Interval

Boreholes with logs have shaded circles

CONTINENTAL GOLD CORP.
 MT. MILLIGAN PROJECT
 OVERBURDEN ISOPACH
 SCALE 1:2000
 DATE: AUGUST 1989
 DRAWN BY: BILL DONALDSON
 FIGURE 3



125 HOLE NUMBER
 1037 SURFACE ELEVATION (M)
 1037 BEDROCK ELEVATION (M)

10 m Contour Interval

GEOLOGICAL BRANCH 1
 ASSESSMENT REPORT
19,121

CONTINENTAL GOLD CORP.
 MT. MILLIGAN PROJECT
 BEDROCK "SURFACE" CONTOUR PLAN
 SCALE 1:2000
 DATE: AUGUST 1989
 DRAWN BY: BILL DONALDSON
 FIGURE 4