

LOG NO: 0927	RD.
ACTION:	
FILE NO:	

GEOLOGICAL and GEOCHEMICAL REPORT

on the

LARK 1 and LARK 3

Mineral Claims

in the

Vernon Mining District
of British Columbia

N.T.S. 82 L 5E

Latitude 50°27' Longitude 119°38'

Owned and Operated by
Commonwealth Gold Corporation
of

1700 - 355 Burrard Street
Vancouver, B.C. V6C 2G8

**SUB-RECORDER
RECEIVED**
SEP 21 1989
M.R.# \$
VANCOUVER, B.C.

**GEOLOGICAL BRANCH
ASSESSMENT REPORT**

19,137

Consultants:
Ainsworth-Jenkins Holdings Inc.
525-890 West Pender Street
Vancouver, B.C. V6C 1J9

Author:
Vintage Exploration Inc.
A.D. Clendenan, P.Geol; F.G.A.C.

Dates of work 17 May, 1989 to 11 July, 1989.

JBC

TABLE OF CONTENTS

	Page
Introduction	
(i) Location	1
(ii) Claim Title Summary	1
General Geology	2
Geochemistry	
Stream Sediment Pan Concentrates	3
Soils Geochemistry	4
Rock Geochemistry	4
Conclusions and Recommendations	5
Itemized Statement of Costs	6
Statement of Qualifications	
Appendicies	
Appendix I Stream Sediment Pan Concentrate Sample Description - 2 pages	
Appendix II Maps	
Figure 1. Location Map. 1:250,000	
Figure 2. Claim Location, Sample Locations, Geology 1:50,000	
Figure 3. Soil Reconnaissance Line #1, Geology 1:5000	
Figure 4. Soil Reconnaissance Line #2, Geology 1:5000	

JBC

INTRODUCTION

(i)

The Lark Claims are located west of Okanagan Lake and 21 kilometers due west of the City of Vernon, B.C.

Access is by road from the historic O'Keefe Ranch 16.6 kilometers north of Vernon, then south on the Westside Road along Okanagan Lake for 18.5 kilometers to the Whiteman Main logging road at Parker Beach, then 10 kilometers west along the Whiteman Main to Bouleau Creek, then north and west along the Bouleau Creek logging road for a further 5.6 kilometers to the L.C.P. for Lark 1 and Lark 3. Access to the northern and eastern portion of the claim block is further along the Bouleau Creek logging road to Bouleau Lake and then east along the extensive network of logging roads which can also be accessed from the Browns Creek main logging road which joins the Westside road near the mouth of Naswhito Creek.

(ii)

The property is comprised of two, 20 unit mineral claims; Lark 1, Record Number 2846 and Lark 3, Record Number 2847. The claims were staked by M. Pym on 12 June, 1988 and were recorded in Vancouver on 11 July, 1988, as a result of the interest in the area after the announcement of significant drill intersections of gold mineralization on the nearby Huntington Resources Inc. property.

The Lark 1 and Lark 3 Claims were transferred to Tahltan Holdings Ltd. on 10 August, 1988, to Ben Ainsworth of Metamin Resources Ltd. on 11 August, 1988 and to El Paraiso Resources Ltd. on 12 August, 1988. El Paraiso subsequently changed names to Commonwealth Gold Corporation, the current owner and operator of the property.

The Moby 1 through 10 two post claims were staked along the Bouleau Creek Road prior to the Lark 3 and 1 claims and cover a portion of the Lark 3 Claim, (See claim map, Figure 2).

ABC

The district first received attention at the turn of the century following the discovery of placer gold in Whiteman and Bouleau Creeks. Huntington Resources Inc's exploration of the Brett property on Whiteman Creek have returned several interesting gold intersections including 2.03 oz/ton gold over 235 feet in reverse circulation drill hole 88-11. The Huntington Resources precious metal mineralization is in both quartz veins in granite rocks of the Okanagan batholith and in north and north-westerly trending epithermal type shear zones cutting tertiary volcanic rocks. The Lark property rock units are geologically similar to the Huntington Resources rock units. Bouleau Creek which crosses the Lark Claims is in a major north-west trending structure which parallels the structures which host the mineralization on the Huntington property.

There is no record or evidence of previous mineral exploration on the Lark Claims.

GENERAL GEOLOGY

The area is underlain by Jurassic or Cretaceous granitic rocks of the Okanagan batholith, which is partly overlain by a thick underformed assemblage of basalt, andesite and dacite, locally tuffaceous, of probable Eocene, (Tertiary age).

Bouleau Creek which crosses the Lark Claims is in a major north-west trending structure which parallels the structures which host the mineralization on the Huntington property.

The lower elevations of the Bouleau Creek valley on the Lark Claims are underlain by the hornblende quartz diorite phase of the Okanagan batholith. This quartz diorite is fresh and unaltered except near the north west corner of the Lark 3 claim. At this location the hornblende in the quartz diorite has been altered to chlorite. This chloritic alteration may be due to the intersection of the north-west trending Bouleau Creek structure and the north east trending. Minor (less than .1 per 5 meters) discontinuous 1 to 2 m.m. quartz veinlets were noted in both the fresh and chlorite altered quartz diorite. Overlying the quartz diorite is a andesite lapillic tuff which is unaltered and strikes 40° and dips 35° west and has a vertical outcrop thickness of less than 50 meters. The andesite lapilli tuff is overlain by and may grade into a quartz ore lapilli tuff with an estimated thickness of less than 50 meters.

ABC

These units are in turn overlain by an andesite flow unit with a strike of 125 degrees and a 15 degree northerly dip and a major cliff forming vesicular basalt which is at least 400 meters thick. These vesicular basalt flows also form the large flat areas at top of the hill. The provincial government geology map indicates the basalts are overlain by a feldspar porphyry, however no outcrops of this rock unit were located during the course of this field work. Boulders of dacite (ash lapilli) tuff containing sub rounded feldspar crystals were located on the "basalt plateau" on and to the north of the Lark Claims.

GEOCHEMISTRY

Stream Sediment Pan Concentrates

Four panned concentrate samples were collected from the claim area. Pan concentrate samples 2 and 3 were collected from Bouleau Creek which carries 15 to 30 cm. depth of water in a 2 to 3 meter stream. Pan concentrate samples 1 and 4 were collected from dry or intermittent streams that drain the south facing slopes which drain the Lark Claims. Approximately 25 kilograms of coarse material was collected from several sites at each of the sample locations and was wet sieved and panned down to approximately 75 to 150 grams of heavy concentrate for samples 1, 2 and 3 while approximately 750 grams of sample 4 was sent for analysis. Detailed sample descriptions are given in the sample description appendix, and sample locations are shown on Maps # 2 and 3.

Samples 2 and 3 from Bouleau Creek returned similar anomalous values in silver, zinc and mercury. The mercury value for Sample 3 is twice the value for Sample 2, and may reflect mineralization on the Lark Claims between sample sites 2 and 3. The known showing in the area of Bouleau Lake, 3 kilometers to the north west may also account for the anomalous values, in Samples 2 and 3.

ABC

SOIL GEOCHEMISTRY

Two reconnaissance soil sample lines were run on the claims. Line 1 was laid out to test the area of the chlorite altered quartz diorite and Line 2 was laid out to test the area of the geomorphologically anomalous appearing cluster of small ponds near the northern end of the claims between Lark 1 and Lark 3.

Seventeen soil samples were collected from the B horizon, using a mattock and were submitted to Min - En Labs and the - 80 mesh fraction was analysed where sufficient fines were available and the - 40 mesh fraction was analysed for the other 5 samples. The mesh fraction analysed for each sample is shown on the analysis report, in the Appendix.

The soil sample line locations are shown on Figure 2, the soil line results are shown on Figures 3 and 4.

Soil line one starts on the north claim boundary, 500 meters east of the north west corner post of Lark 3. The line bearing is 130 degrees for 275 meters along the 4300 foot contour line, at which point the major vesicular basalt cliffs were encountered. The line then has an average bearing of 270 degrees, angling down and across slope (and skirting other cliffs) while crossing the stratigraphic section, back to the chlorite altered quartz diorite at the north west corner of Lark 3. Three samples on Line 1 stations, 2+75, 5 and 6, have anomalous gold values of 35, 45 and 112 ppb respectively. The sample taken on Line 1 at Station 5 returned an anomalous silver value of 7.4 ppm. No apparent reason for the anomalous values was observed during the collection of the samples. The average ground slope is 40° at 220°, or almost perpendicular to the 2 legs of Line 1.

No anomalous soil sample values were returned from soil line 2. The geomorphologically anomalous ponds shown on the claim map appear to be nothing more than small swamps, perched on the flat area at the headwaters of the main creek drainage which bisects the Lark 3 Claim.

ROCK GEOCHEMISTRY

Three rock samples were collected, and none returned any values of interest.

Sample 89-7-R1 was a fresh hornblende quartz diorite from outcrop near mile post 15.6 on the Bouleau Creek road, near pan concentrate Sample 1.

ABC

Rock Geochemistry cont'd.

Sample 89-7-R2 was from the outcrop of chlorite altered quartz diorite near the north west corner of the Lark 3 mineral claim, by km post 19, on the Bouleau Creek road. This rock sample was taken between soil samples 7 and 8 on Line 1, (See Figure 3).

Sample 89-7-R3 is from a boulder of iron stained quartz eye rhyolite at km 21.3 on the Browns Creek road system near the center of the northern boundary of the Lark Claims.

Results of the three rock samples are listed in the Appendix.

CONCLUSIONS AND RECOMMENDATIONS

The anomalous soil sample results from soil Line 1 should be followed up with further exploration.

The Moby 1 through 10 Claims may cover part of the proposed follow-up soil sample grid.

It is recommended that a regular soil sample grid be laid out to cover this area. Seven lines, each 200 meters long, with sample sites every 25 meters on lines 100 meters apart should adequately test the possible extent of the presently known anomalous values.

ASL

ITEMIZED STATEMENT OF COSTS

Professional Fees

Geology, Prospecting, Geochemical Sample Collection and Reports

A. D. Clendenan, Prof. Geologist (Alberta) F.G.A.C.
17 May, 1989 to 11 July, 1989, 6.25 days \$3125.00

Food and Accommodation

4 July, 1989 to 7 July, 1989 \$ 197.40

Transportation

4 July, 1989 to 7 July, 1989 \$ 685.75

Analysis Ag, As, Cu, Pb, Sb, Zn, Au, Hg

17 Soil Geochem @ \$17.25 each \$293.25
4 Pan Concentrate Stream
Sediments @ \$19.25 each \$ 77.00
3 Rock Geochem @ \$19.25 each \$ 57.75

\$ 428.00

Field Supplies and Consumables

\$ 2.53

Telephone

\$ 30.39

Total Expenditure \$4469.07

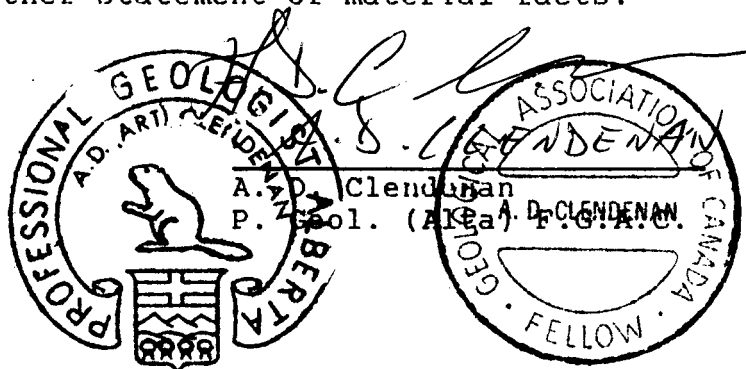
AD. Clendenan
AD. CLENDENAN

STATEMENT OF QUALIFICATIONS

I, Arthur David Clendenan, with a business address of 1815 Bewicke Avenue, North Vancouver, B.C. V7M 3C6 do hereby certify that:

1. I am a Professional Geologist, registered with the Association of Professional Engineers, Geologist and Geophysicists of Alberta since 1975.
2. I am a Fellow of the Geological Association of Canada (1981).
3. I am a graduate of the University of Alberta with a B. Sc. degree in Geology (1973).
4. I have been engaged in mineral exploration in Western Canada, the United States and South America since 1970.
5. This report is based on personal examination and field work carried out between July 4 and July 7, 1989.
6. I am the Managing Director of Vintage Exploration Inc. of North Vancouver, B.C.
7. I do not own nor do I expect to acquire any shares or interest in this property or of the owner of the property, Commonwealth Gold Corporation.
8. Written permission is required to use this report or any part of it in a prospectus or other statement of material facts.

North Vancouver, B.C.
July 11, 1989



APPENDIX I

STREAM SEDIMENT PAN CONCENTRATE

SAMPLE DESCRIPTION

- Pan Conc. #1 - Main drainage of Lark 3 at Bouleau Creek, at 16.9 kilometers on Bouleau Logging Road. Creek flow direction 190°, intermittent trickle of water, no water 50 feet north of road, stream gradient over the 150 feet of creek sediment sampled is 10°. Original volume of sample 2 full 16" pans Original weight estimated at 60 pounds including rocks up to 2 inches diameter. Sieved to 8 pounds of less than 1/16 inch fraction, panned to 3 ounces of concentrate, no black sands seen in panned concentrate. Plan was to sample all tributaries of this creek but there is no water flow and channels will be dry. Boulders in creek: 98% hornblende quartz diorite, 2% andesite.
- Pan Conc. #2 - Bouleau Creek, across from and upstream of Lark 3 main creek sample, Pan Conc. #1. Creek flow direction 100 degrees. Creek is 6 feet wide and 4 inches deep. Flow rate is 1.5 out of 3 for vertical. Gradient is 5 degrees. Original sample weight 60 pounds of less than 2 inch rocks, 10 pounds of less than 1/16 inch fraction, panned to 3 ounces of concentrate with a trace of black sand. Boulders in creek: 70% hornblende quartz diorite 5% dacite, 5% diorite, 10% chlorite quartz diorite 10% andesite flow and tuff.
- Pan Conc. #3 - Sample taken on Bouleau Creek below Bouleau Creek road at 19.2 kilometers below Lark 3. 4N 5W post to obtain data on Bouleau Creek geochemistry where it enters Lark Claims. Flow direction 130 degrees, 2 channels, one is 10 feet wide and 1 foot deep and other is 6 feet wide and 1 foot deep, channels are separated by 75 foot wide sand bar which is tree covered. There is more water here than at sample site Pan Conc. #2 or below the Lark 1 and 3 L.C.P.

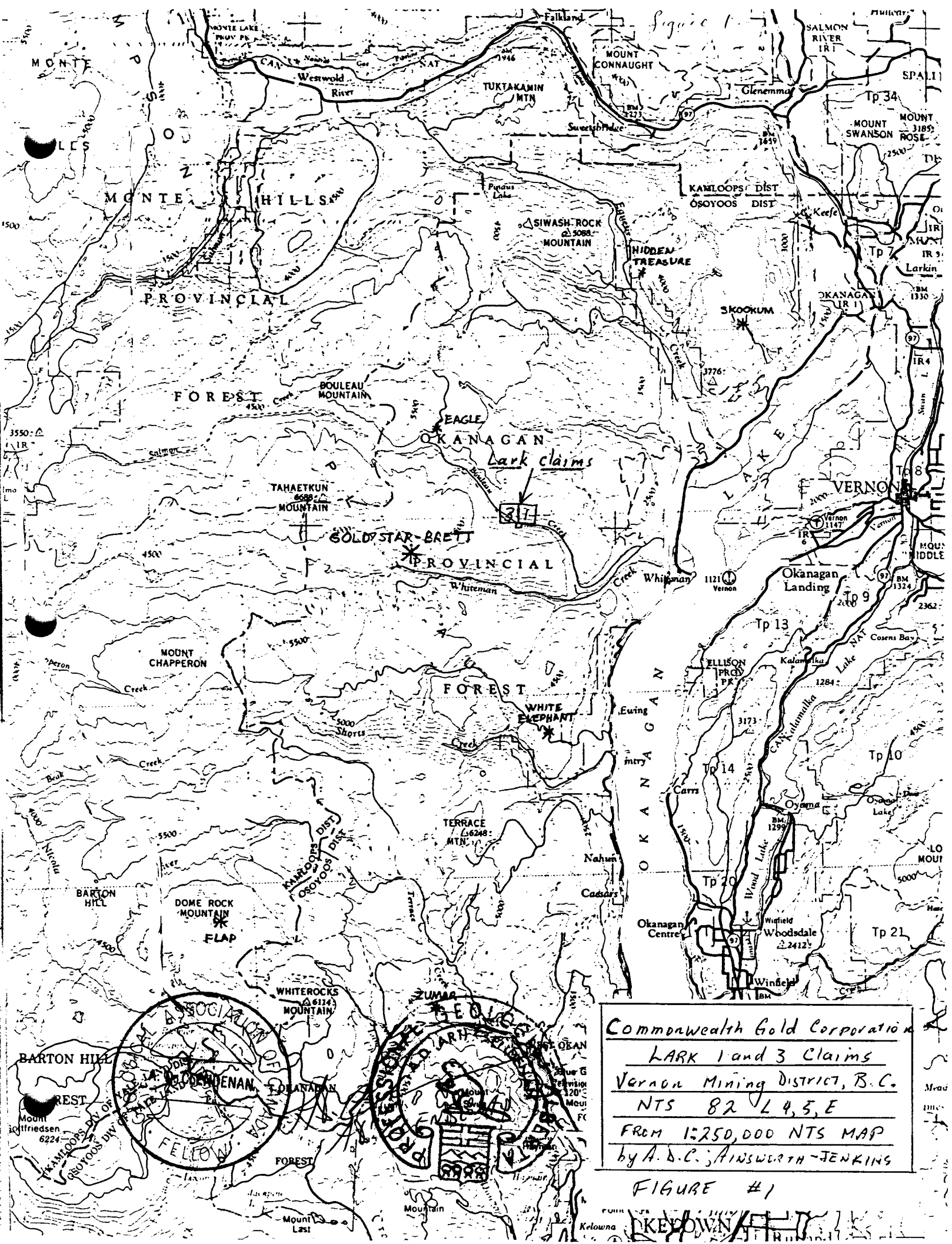
ABC

Pan Conc. #3 cont'd.

Original sample weight 30 pounds of less than 1/2 inch rocks, sieved to 15 pounds less than 1/16 inch fraction which was panned to 5 ounces of concentrate. Boulders were predominately hornblende quartz diorite with minor andesites and dacites.

Pan Conc. #4 - Sample taken from only accessible drainage of Lark 1 Claim. Sample site at 12.2 kilometers on Bouleau Logging road. Channel is 10 feet wide and 5 feet deep and has no water. Original sample estimated weight is 60 pounds of less than 2 inch rocks, 50 pounds of less than 1 inch rocks, 15 pounds of less than 1/16 inch sieved fraction. Pan Conc. weight 1.5 pounds (which was split for analysis by the Lab). Sample was panned at Bouleau/White Man Creek Junction.
Boulders: 70% hornblende quartz diorite, 10% vesicular basalt, 10% basalt, 10% feldspar lathe dacite.

ABC

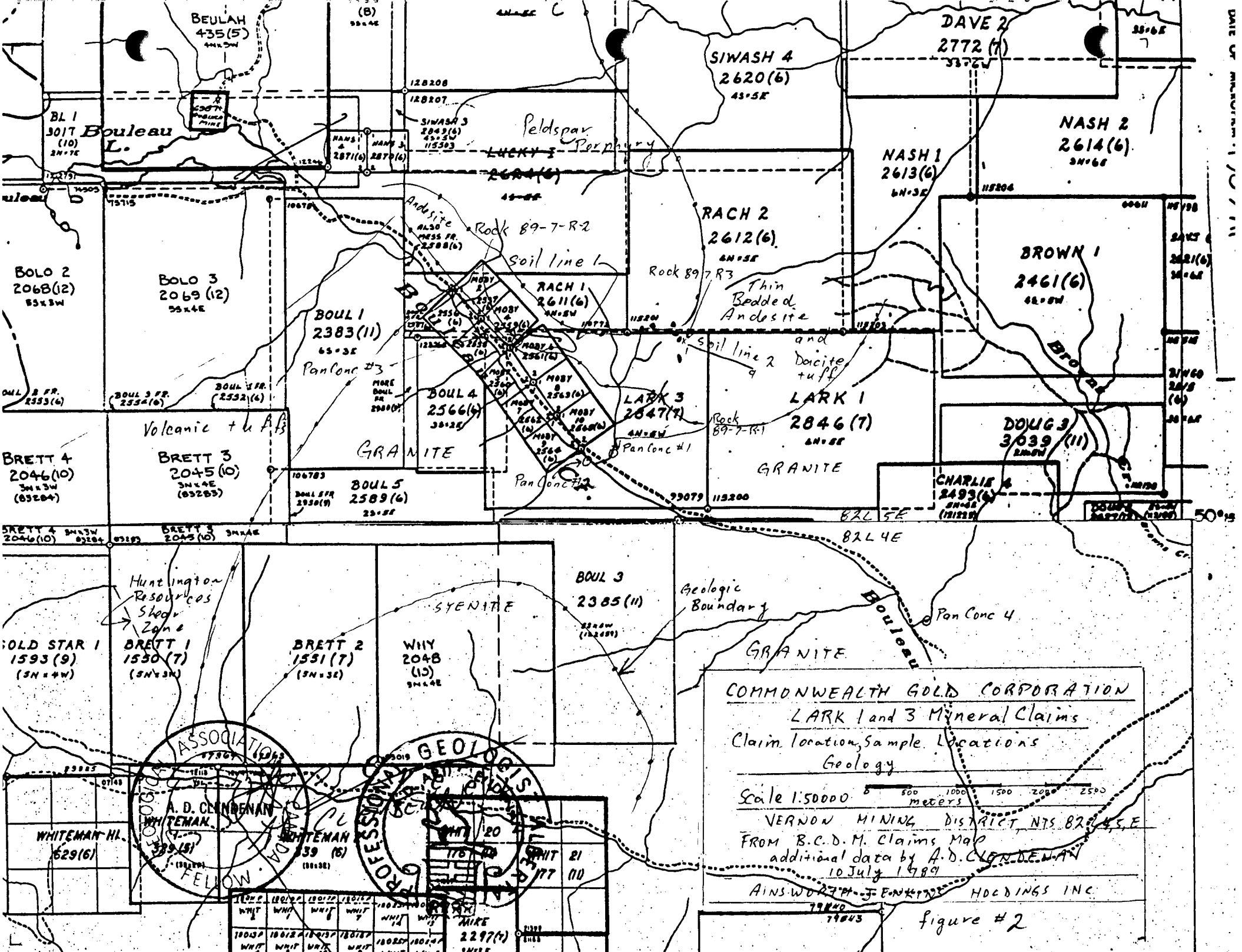


Commonwealth Gold Corporation
 LARK 1 and 3 Claims
 Vernon Mining District, B.C.
 NTS 82 L 4, 5, E
 FROM 1:250,000 NTS MAP
 by A. D. C. AINSWORTH-JENKINS

FIGURE #1



KEOWN

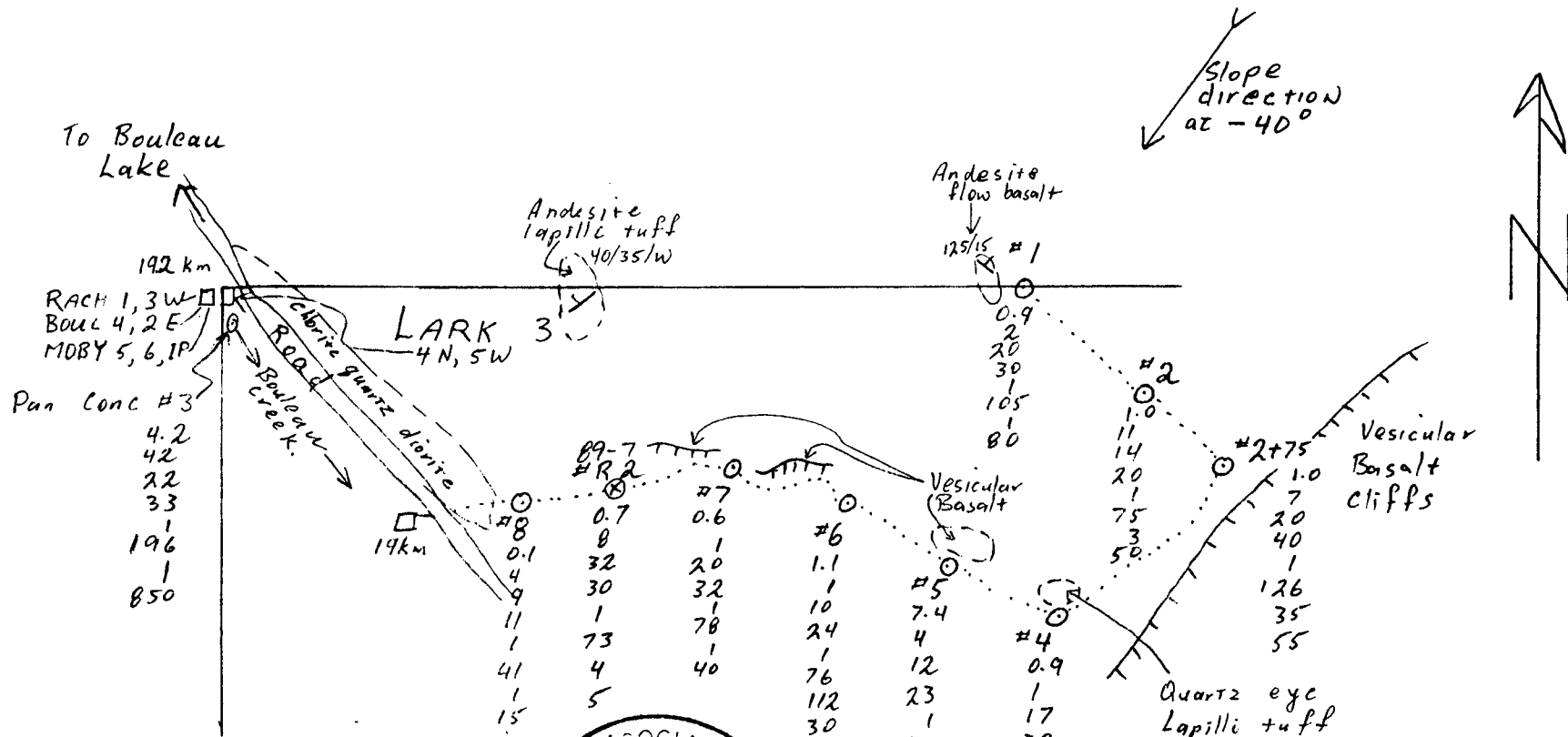


COMMONWEALTH GOLD CORPORATION
 LARK 1 and 3 Mineral Claims
 Claim location, Sample Locations
 Geology
 Scale 1:50000
 0 500 1000 1500 2000 2500 meters
 VERNON MINING DISTRICT NTS 82-45-E
 FROM B.C.D.M. Claims Map
 additional data by A.D. CLENDENAN
 10 July 1989
 AINSWORTH ENGINEERING HOEDINGS INC.

ASSOCIATION
 A. D. CLENDENAN
 FELLOW
 GEOLOGICAL
 PROFESSIONAL SOCIETY OF CANADA

18015	18016	18017	18018	18019	18020
WHIT	WHIT	WHIT	WHIT	WHIT	WHIT
18021	18022	18023	18024	18025	18026
WHIT	WHIT	WHIT	WHIT	WHIT	WHIT
18027	18028	18029	18030	18031	18032
WHIT	WHIT	WHIT	WHIT	WHIT	WHIT
18033	18034	18035	18036	18037	18038
WHIT	WHIT	WHIT	WHIT	WHIT	WHIT
18039	18040	18041	18042	18043	18044
WHIT	WHIT	WHIT	WHIT	WHIT	WHIT

figure #2



LEGEND

⊙ #6... Soil Sample Station #6

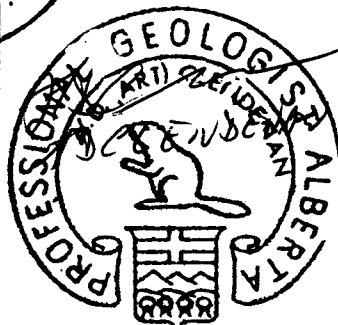
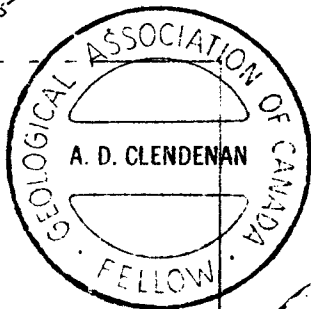
- 1.1... Ag ppm
- 1... As ppm
- 10... Cu ppm
- 24... Pb ppm
- 1... Sb ppm
- 76... Zn ppm
- 112... Au ppb
- 30... Hg ppb

⊗ #R2... Rock sample Station 89-7-R2
Results in same order as Soil sample

⊙ Pan Conc #3... Pan Concentrate sample
cliffs.

[19]... Road Marker post 19 km.

()... Outcrop boundaries

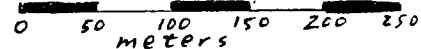


COMMONWEALTH GOLD CORPORATION

LARK 3 Mineral Claim

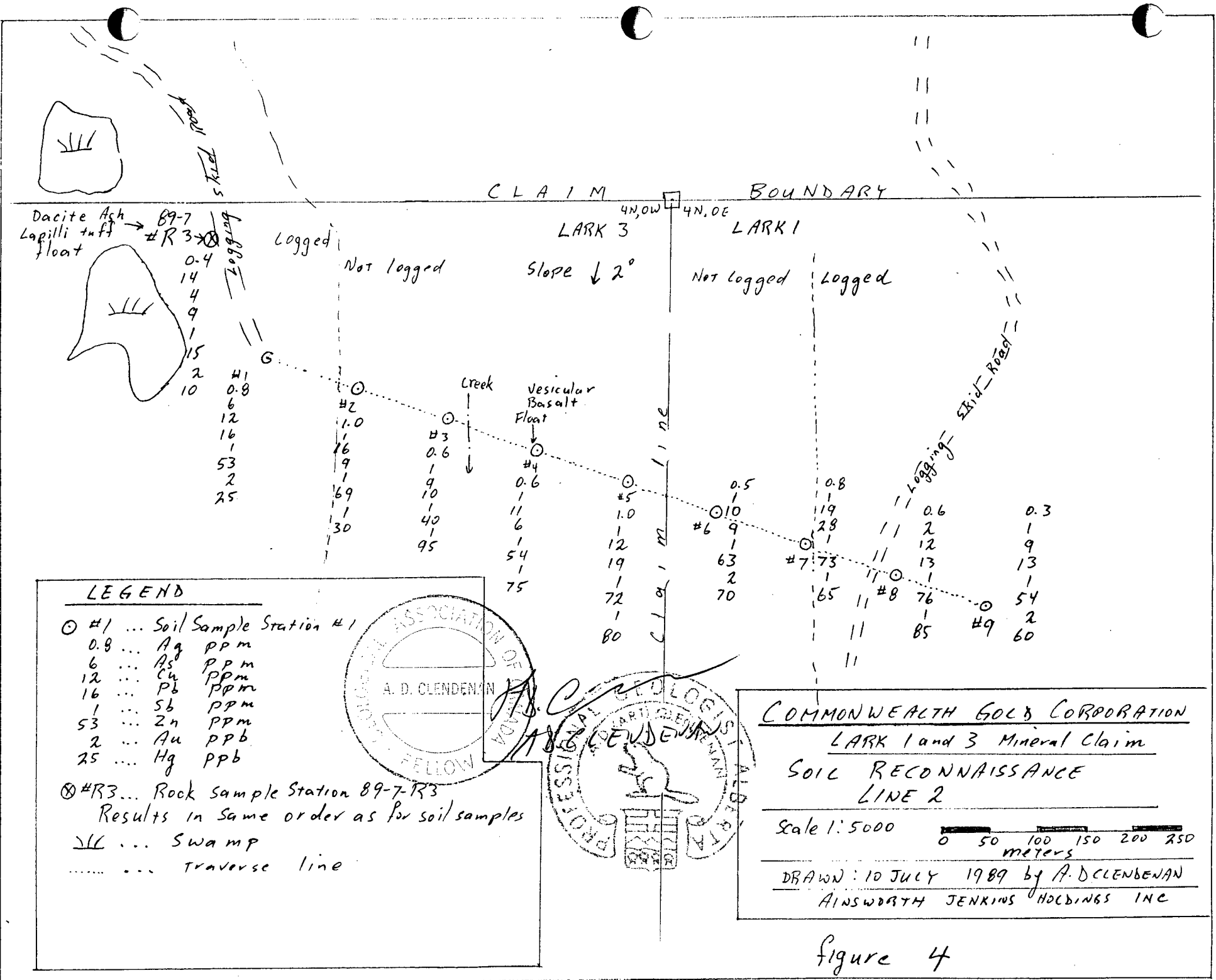
SOIL RECONNAISSANCE
LINE 1; GEOLOGY

Scale 1:5000



DRAWN: 10 JULY 1989 by A. D. CLENDENAN
AINSWORTH JENKINS HOLDINGS INC

figure 3



CLAIM BOUNDARY

4N,0W 4N,0E

LARK 3

LARK 1

Logged Not logged

Slope ↓ 2°

Not logged Logged

Dacite Ash
Lapilli tuff
float

89-7
#R3

0.4
14
4
9
15
2
10

#1
0.8
6
12
16
1
53
2
25

#2
1.0
16
9
1
69
1
30

#3
0.6
1
9
10
40
1
95

Creek
Vesicular
Basalt
float

#4
0.6
11
6
54
1
75

#5
1.0
12
19
1
72
1
80

#6
0.5
1
9
1
63
2
70

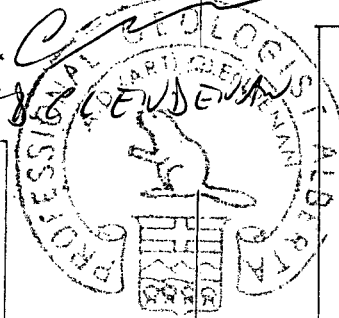
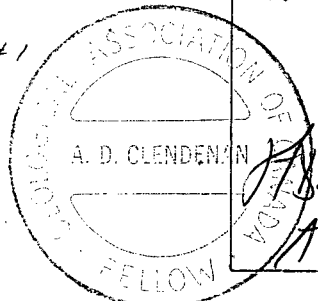
#7
0.8
19
28
1
73
1
65
11

#8
0.6
2
12
13
1
76
1
85
11

#9
0.3
1
9
13
1
54
2
60

LEGEND

- ⊙ #1 ... Soil Sample Station #1
- 0.8 ... Ag ppm
- 6 ... As ppm
- 12 ... Cu ppm
- 16 ... Pb ppm
- 1 ... Sb ppm
- 53 ... Zn ppm
- 2 ... Au ppb
- 25 ... Hg ppb
- ⊗ #R3 ... Rock Sample Station 89-7-R3
- Results in same order as for soil samples
- ██ ... Swamp
- Traverse line



COMMONWEALTH GOLD CORPORATION
LARK 1 and 3 Mineral Claim
SOIL RECONNAISSANCE
LINE 2

Scale 1:5000
0 50 100 150 200 250 meters

DRAWN: 10 JULY 1989 by A. D. CLENDENAN
AINSWORTH JENKINS HOLDINGS INC

Figure 4

