

LOG NO: 1012	RD.
ACTION:	
FILE NO:	

FILMED

ASSESSMENT REPORT OF THE 1989
 TOPOGRAPHIC MAPPING AND AIRBORNE GEOPHYSICAL PROGRAM
 ON THE
 PHIL 20 CLAIM

Omineca Mining Division
 NTS 93N/2

Latitude 55° 09' N Longitude 124° 55' W

SUB RECORDER
 RECEIVED

OCT 10 1989

M.R. # _____ \$ _____
 VANCOUVER, B.C.

Owner: BP Minerals Limited
 Operator: BP Minerals Limited

Part 1 of 2

GEOLOGICAL BRANCH
 ASSESSMENT REPORT

BPVR 89-4

19,163

R.H. Wong
 October, 1989

TABLE OF CONTENTS

	<u>Page No.</u>
1. SUMMARY	1
2. INTRODUCTION	1
A) Location, Access, Physiography and Climate	1
B) Property Status	2
C) History of Exploration	2
3. REGIONAL GEOLOGY	2
4. TOPOGRAPHIC MAPPING	3
5. AIRBORNE GEOPHYSICS	4
BIBLIOGRAPHY	5

LIST OF FIGURES

	<u>Following Page No.</u>
FIGURE 1: Location Map	1
FIGURE 2: Claims Location Map	2
FIGURE 3: Orthophoto Map - Mt. Alexander Project 1:10,000	In Pocket
FIGURE 4: Topographic Map - Mt. Alexander Project 1:10,000	In Pocket

LIST OF APPENDICES

	<u>Following Page No.</u>
APPENDIX I: Statement of Qualifications	5
APPENDIX II: Statement of Costs	5
APPENDIX III: Aerodat Limited - Report and Maps, Mt. Alexander Project	In Folder

1. SUMMARY

A program of topographic mapping and airborne geophysics was carried out on the PHIL 20 claim this year.

The Orthoshop of Calgary, Alberta was contracted to produce an orthophoto map of the entire claim area at a scale of 1:10,000 at a cost of \$2,200.00.

Aerodat Limited of Mississauga, Ontario completed approximately 63 line-kilometres of low-level (60 m) airborne magnetometer and VLF-EM survey over the entire claim area at a cost of \$2,390.00.

A total of \$4,000.00 has been applied as assessment on the claims.

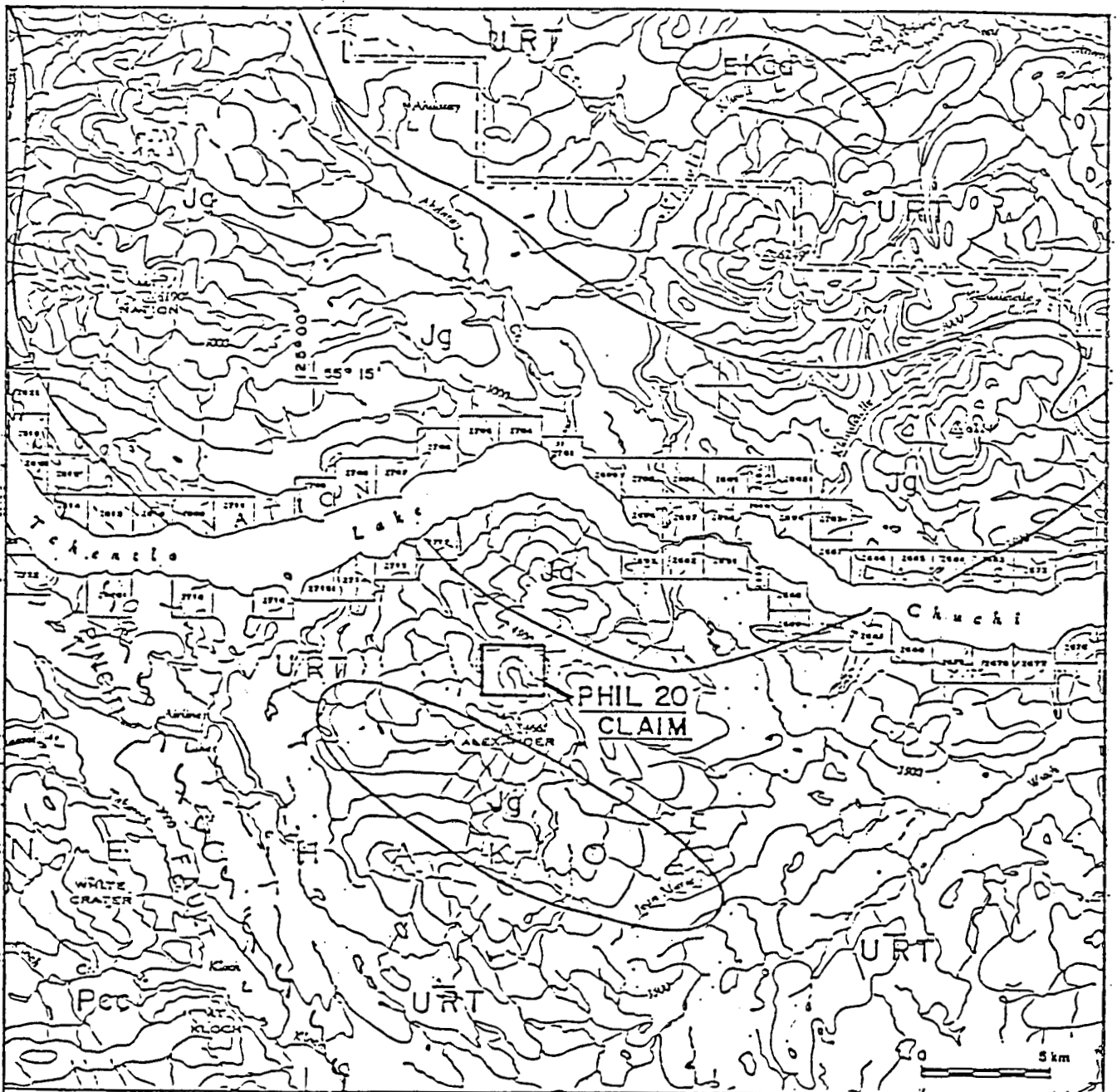
2. INTRODUCTION

A. Location, Access, Physiography and Climate

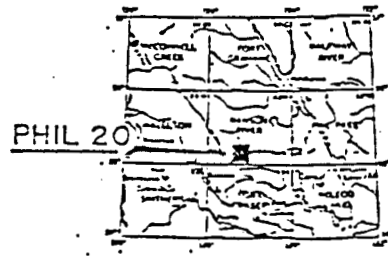
The Phil 20 property is located on the north slope of Mt. Alexander, approximately 90 km north-north-west of Fort St. James.

Access is by helicopter from Fort St. James.

The claim covers a north to north-west facing spur of Mt. Alexander which slopes moderately to steeply towards the confluence of two creeks. The property is covered by a mature forest of spruce, balsam fir, deciduous trees and sections of alders.



- LEGEND**
- EKqd** EARLY CRETACEOUS
BAVER INTRUSIONS
 - JKqd** JURASSIC - CRETACEOUS
INTRUSIVE ROCKS
 - Jq** JURASSIC
MOGEE BATHOLITH
 - EJq** EARLY JURASSIC
TOPLEY INTRUSIONS
 - TJs** UPPER TRIASSIC - LOWER JURASSIC
SETLERA ASSEMBLAGE
 - URT** UPPER TRIASSIC
TAKLA GROUP
 - PRub** UPPER PALAEOZOIC - TRIASSIC
TREMBLEUR INTRUSIONS
 - Pcc** UPPER PALAEOZOIC
CASH CREEK GROUP



BP SELCO DIVISION -
BP RESOURCES CANADA LIMITED

PHIL 20 CLAIM
REGIONAL GEOLOGY & CLAIM LOCATION MAP

SCALE 1:250,000	DRAWN BY:	FIG. 1
DATE Oct. 1989	DRAFTED BY:	
N.T.S. 93 N	PROJ. 10200	REPORT SPVR 89-4

The claims receive a moderate amount of precipitation during most of the year.

B. Property Status

The property consists of one claim (20 units) whose registered owner is BP Minerals Limited of Vancouver, The claim's record number is 6488 and the recorded date is July 20, 1984.

D. History of Exploration

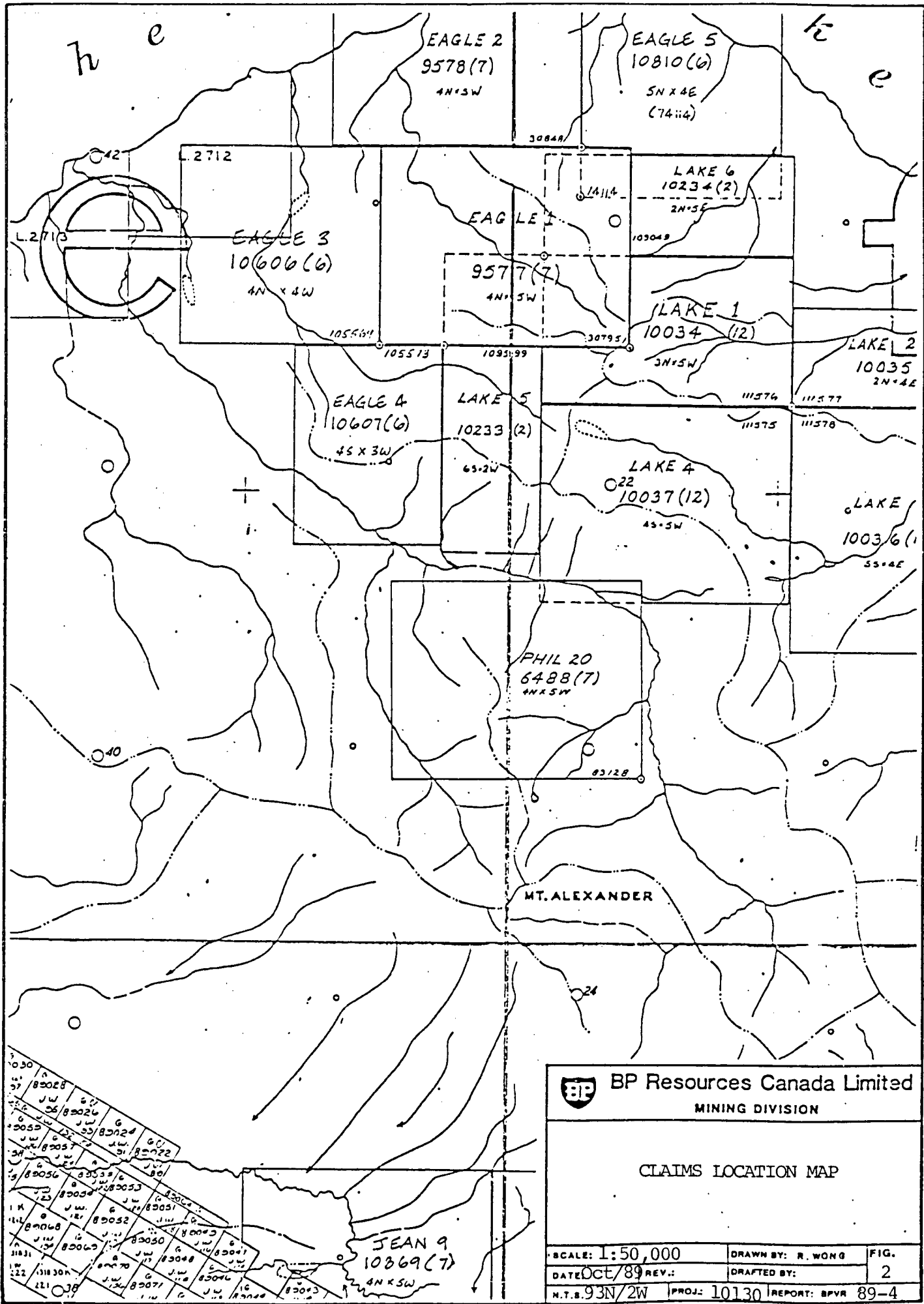
In 1974, Cominco Ltd. built a 32 km cat road from the west end of Chuchi Lake down to the JW property (Cu-Mo). This overgrown cat road crosses that west side of the Phil 20 claim.

In August of 1984, BP conducted preliminary geological mapping, prospecting and soil sampling. The claim was staked following the release of results from a government stream sediment survey and covers an area of high magnetic relief coinciding with arsenic-mercury-antimony anomalies.

Re-interpretation of previous soil sample results was conducted by BP during June 1988. During July, 1988, additional geological mapping and soil/silt sampling surveys were completed by BP.

3. REGIONAL GEOLOGY

The PHIL 13 claim group is situated in the central part of the Quesnel Trough, within the Intermontane Tectonic Belt of the Canadian Cordillera. The Quesnel Trough assemblage consists



 **BP Resources Canada Limited**
MINING DIVISION

CLAIMS LOCATION MAP

SCALE: 1:50,000	DRAWN BY: R. WONG	FIG. 2
DATE: OCT/89	REV.:	DRAFTED BY:
M.T.S. 93N/2W		PROJ: 10130
REPORT: BPVR 89-4		

principally of Upper Triassic Takla Group volcanic and sedimentary rocks which are correlative with the Nicola Group in southern B.C. and the Stuhini Group in northern B.C. (Richards 1976, Monger 1977). The volcanic rocks are island-arc type calc-alkaline to alkaline pyroxene-rich flows and volcanoclastic rocks of predominantly submarine origin. They are interlayered with volcanic-derived greywacke and siltstone, with minor limestone and conglomerate. The assemblage was intruded by the Jura-Cretaceous Omineca intrusions, principally the Hogem Batholith as well as smaller intrusions of acid to alkaline affinity. Northwest and northeast trending transcurrent and block faults, and minor folding have offset and juxtaposed major sections of the volcanic stratigraphy with the intrusive and sedimentary rocks.

4. TOPOGRAPHIC MAPPING

To serve as a control base for further geologic surveys, an orthophoto mapping project was carried out for the entire claim area by The Orthoshop of Calgary, Alberta. From 1987 aerial photography (1:70,000), the following were produced at a scale of 1:10,000:

- one screened cronoflex positive showing orthophoto image and UTM grid.
- one cronoflex positive showing orthophoto, UTM grid and 20 m contour intervals (Figure 3).

- screened cronoflex positive of the digital mapping, planimetric details, topography and UTM grid (Figure 4).

5. AIRBORNE GEOPHYSICS

On June 29, 1989, an airborne magnetometer/VLF-EM survey of approximately 63 line-kilometres was flown over the claim area by Aerodat Limited of Mississauga, Ontario. Details of this survey, including all pertinent maps, are included in Appendix III.

The total field magnetics is characterized by a broadly east-west trending magnetic contour pattern with a fairly steep magnetic gradient to the north. In the south-central region, a broad, low amplitude magnetic high is evident.

Examination of the VLF-EM contours reveals a general north-south striking trend. The transmitting station NAA, Cutler, Maine would be maximum coupled with conductors striking in approximately this direction.

Conductor amplitudes are quite small, over the survey area, generally being less than 6 percent.

BIBLIOGRAPHY

Richards, T.A., 1976. McConnell Creek Map Area (94D, East Half), British Columbia, in Report of Activities, Part A. GSC Paper 76-14, p.43-50.

Monger, J.W.H., 1977. The Triassic Takla Group in McConnell Creek Map Area, North Central, B.C., GSC Paper 76-29.

Pegg, R. and Hoffman, S.J., 1988. Geological and geochemical report on the PHIL 20 Claim. Assessment Report, July 1988.

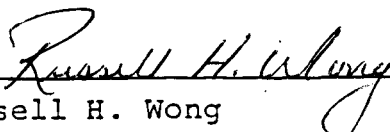
APPENDIX I

Statement of Qualifications

STATEMENT OF QUALIFICATIONS

I, Russell H. Wong of #700 - 890 West Pender Street, in Vancouver, in the Province of British Columbia, do hereby state:

1. That I am a graduate of the University of British Columbia, Vancouver, B.C., where I obtained a B.Sc., in Geology in 1975.
2. That I have been active in mineral exploration since 1973.
3. That I have practiced my profession continuously as a staff geologist for BP Resources Canada Limited, since 1979.



Russell H. Wong
Project Geologist

October, 1989
Vancouver, B.C.

APPENDIX II

Statement of Costs

The Orthoshop

Suite 104,3016 19th, St.N.E.
 Calgary, Alberta, Canada. T2E 6Y9
 (403) 250-7830

V.1.2

JUL 21 1989

OF RESOURCES - MINING

INVOICE

Sold To:

B.P. Canada Resources Ltd.
 700, 890 West Pender Street
 Vancouver
 B.C., Canada V6C 1K5
 Attention: R Wang.

Invoice No. 6147

CI No. 20133

Date: Jul 14, 1989

EIN

Your Purchase Order Number	Orthoshop Work Order No.	Area Name
	2718	Mt.Alexander

Description of services:

- Produce Orthophoto and digital contour maps to cover Mt Alexander project on NTS map 93 N2 \$2,200.00
- Produce Orthophoto and digital contour maps to cover Rainbow project on NTS map 93 N1 \$2,100.00

Approved for payment.

DATE INVOICE REC'D.		July 21/89	
CHECKED BY		APPROVED	
DATE PAID		PAID BY	
ENTERED ON		VENDOR No.	
AREA	TP	ELEM.	LOC.
9300	.	1770	10130
COLLARS		CTS	
\$ 4 326		40	

Federal Sales Tax Licence #

Payment Terms 2%10, net 30, 1.5% / Month.

Total	\$4,300.00
Federal Sales Tax	\$86.40
Invoice Total	\$4,386.40

Client 1 & 2
 Work order file 3
 Invoice file 4
 Accounting 5

Invoice No. 6147

Page

102. July 23/89.

STATEMENT

Date: August 31, 1989

BP Resources Canada Limited
Suite 700, 890 West Pender St.
Vancouver, B.C.
V6C 1K5

Attn: Mr. C.D.S. Bates

In Account With:

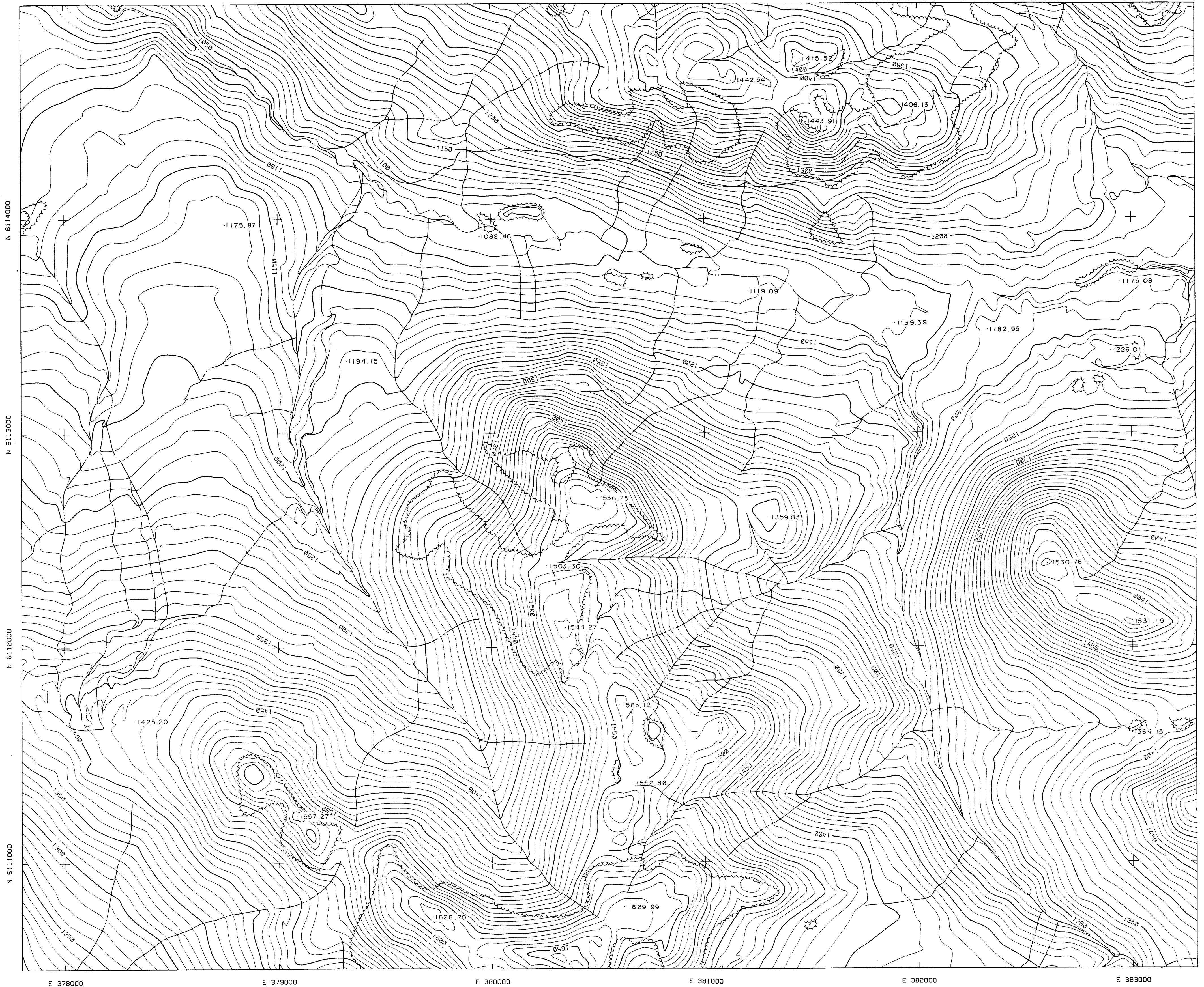
Aerodat Limited
3883 Nashua Drive
Mississauga, Ontario
L4V 1R3

Re: Airborne Geophysical Survey - Prince George area, B.C.

MT. ALEXANDER AREA

63 km @ \$30.00	\$1,890.00
Transponder	\$ 500.00

CONTRACT AMOUNT \$2,390.00

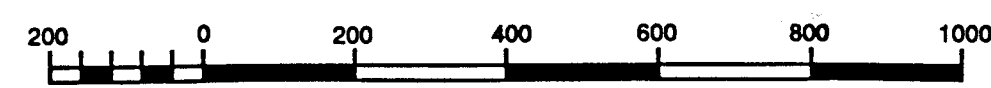


LEGEND

- Trails
- Rivers
- Stream
- Lake
- Trees
- Contours
- Index
- Intermediate

B.P. RESOURCES CANADA LTD.
MT. ALEXANDRA, PROJECT
 BRITISH COLUMBIA

TOPOGRAPHIC MAP
 Scale 1:10000



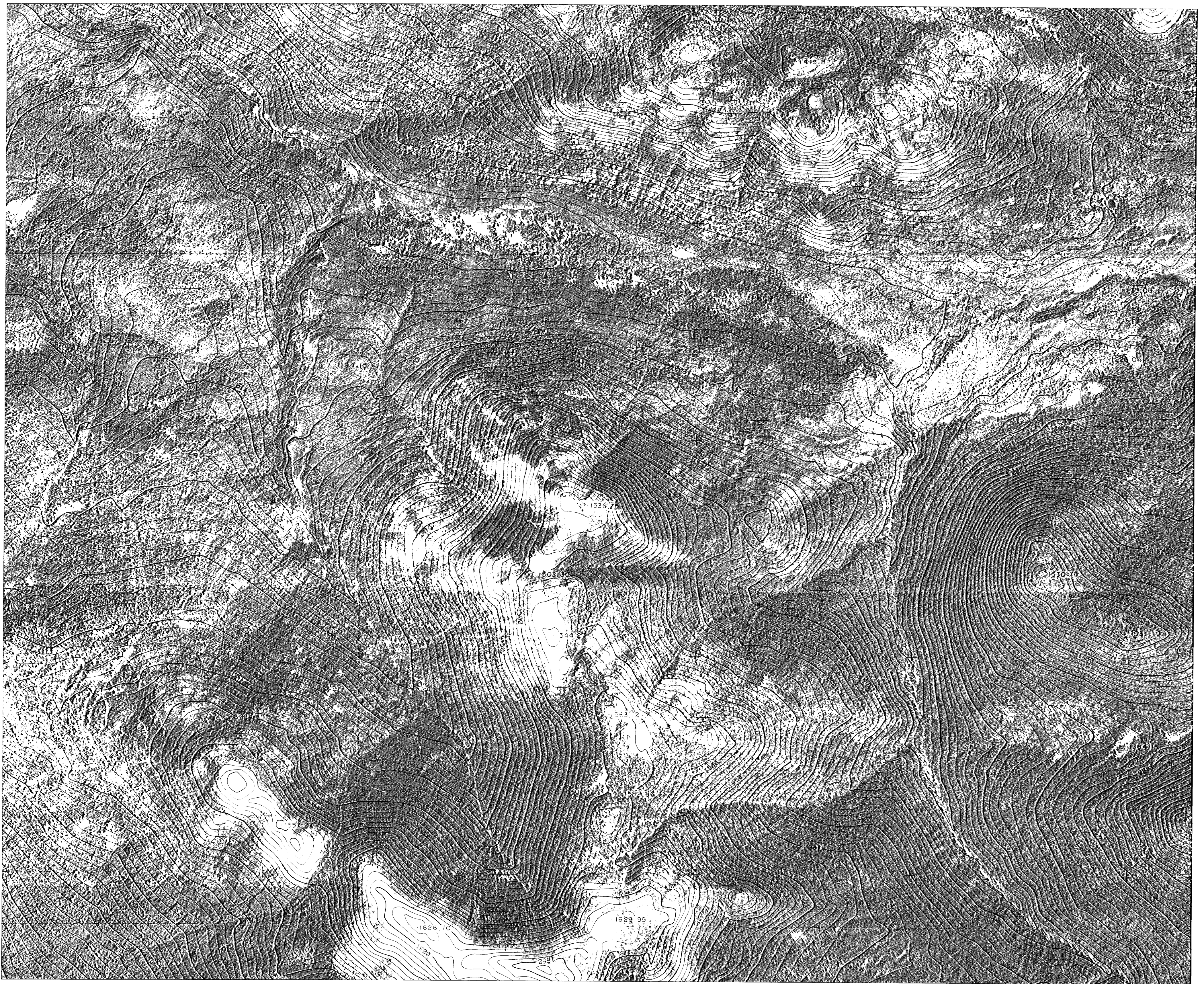
Formline Interval 10 metre

FIG. 4.

Date of Photography: 1987
 Control taken from N.T.S. Map Sheet 93N/1,2
 Compiled by: THE ORTHOSHOP
 WO# 2718

Part 1 of 2
GEOLOGICAL BRANCH
ASSESSMENT REPORT

19,163



E 378000 E 379000 E 380000 E 381000 E 382000 E 383000

B.P. RESOURCES CANADA LTD.
MT. ALEXANDRA, PROJECT
BRITISH COLUMBIA

ORTHOPHOTO MAP
Scale 1:10000



Formline Interval 10 metre

FIG 3.

Date of Photography: 1987
Control taken from N.T.S. Map Sheet 93N/1.2
Compiled by: THE ORTHOSHOP
WG# 2718

Part 1 of 2

GEOLOGICAL BRANCH
ASSESSMENT REPORT

19,163