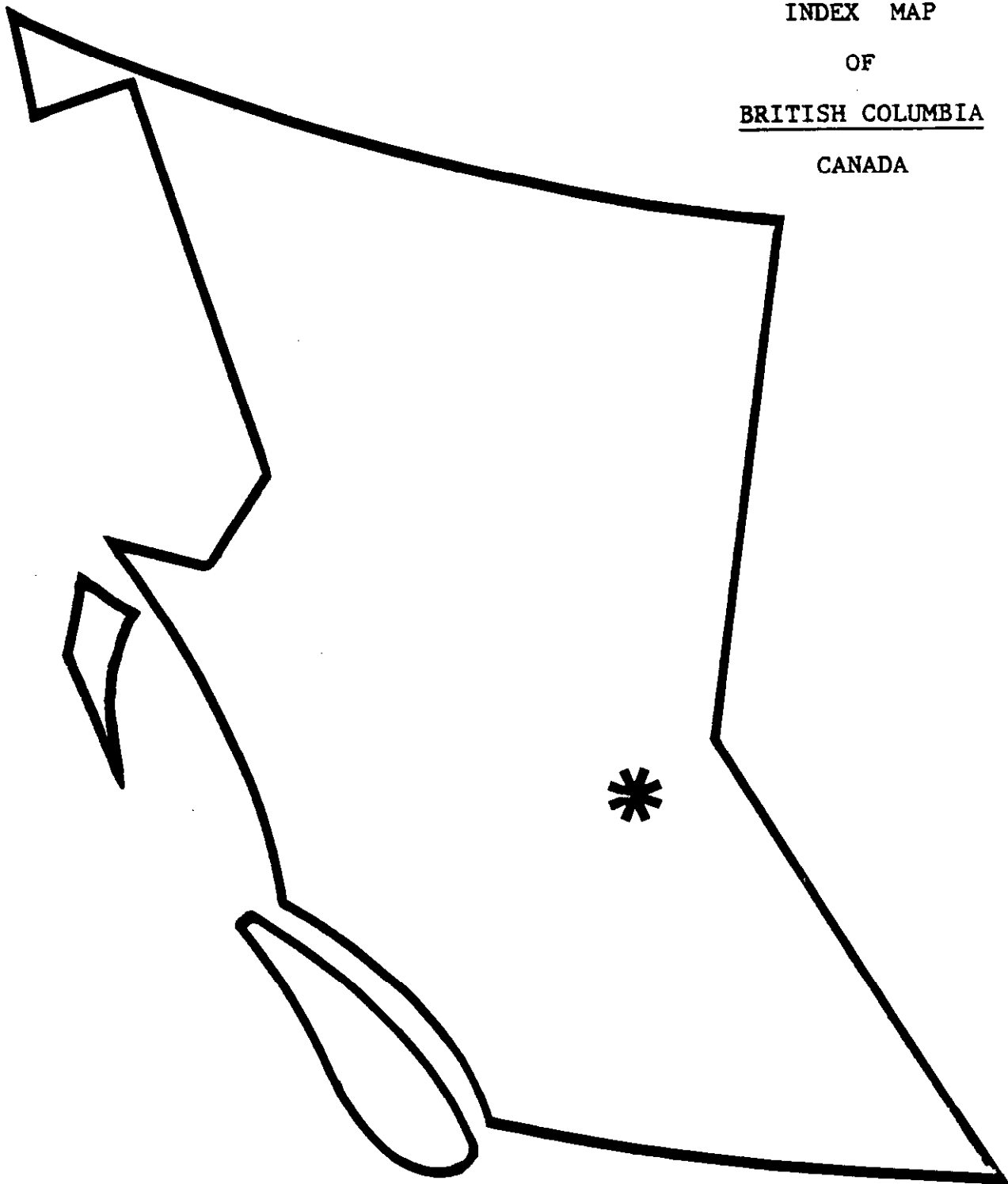




**FIGURE "A"**

INDEX MAP  
OF  
BRITISH COLUMBIA  
CANADA



## TABLE OF CONTENTS

Title Page.....	1
*Figure A: Index Map of B.C.....	2
Table of Contents.....	3
<b>Summary</b> .....	4
Introduction.....	5
Description of Program.....	5
*Figure B: Claim Map.....	6
Property Holdings.....	7
Location & Access.....	7
History.....	7
*Figure C: Location Map.....	8
General Geology.....	9
Description of Drilling Operation.....	9
Description of Drilling Results.....	9
Diamond Drill Hole Log.....	10
Results of Diamond Drill Test.....	12
Conclusions.....	12
Recommendations.....	12
Bibliography.....	13
Appendix A: Min En Labs: ICP Results.....	14
Certificate of Qualifications.....	16
Statement of Expenses.....	17

SUMMARY

DIAMOND DRILL HOLE #89-1 (NQ), DRILLED WITHIN MINERAL CLAIM "KSK", COLLARED AT ABOUT 1500 FT ASL, ORIENTED AT 023 DEGREES, AND INCLINED AT 59 DEGREES CORED KARMUTSEN VOLCANICS THROUGHOUT ITS 650 FOOT LENGTH. EIGHT SAMPLES, SHOWING SPARSE SULPHIDE MINERALIZATION, WERE TAKEN FOR ANALYSIS. NO COMMERCIAL MINERALIZATION WAS ENCOUNTERED.

## INTRODUCTION

This report documents logging, and spot assaying, by the undersigned, of NQ diamond drill core, stored at a private residence in Maple Ridge.

The drill hole collar was spotted by, and the operation was supervised by Sidney C. Johnson.

## DESCRIPTION OF PROGRAM

One NQ diamond drill hole was cored between the 18th and 25th of July, 1989, on the KSK mineral claim property.

The program was supervised by Sidney C. Johnson of 25745-102 Avenue, Maple Ridge, B.C.

The drilling operation was performed by Newmac Industries Ltd., of 5351 Blundell Place, Kamloops, B.C., V2C 6C8

The core was placed in standard-size core boxes, and transported to a private residence in Maple Ridge, B.C., at 12580-243rd Street, where it was logged/sampled by the undersigned.

Upon careful scrutiny of the core, eight sectors showing sulphide mineralization were identified from which typical pieces (ca. 10 cm in length) was taken for analysis.

The rock geochem analysis certificate, issued by Min En Labs of North Vancouver, documenting the tenor of gold, in addition to 12 other elements, found in the submitted samples, are appended.

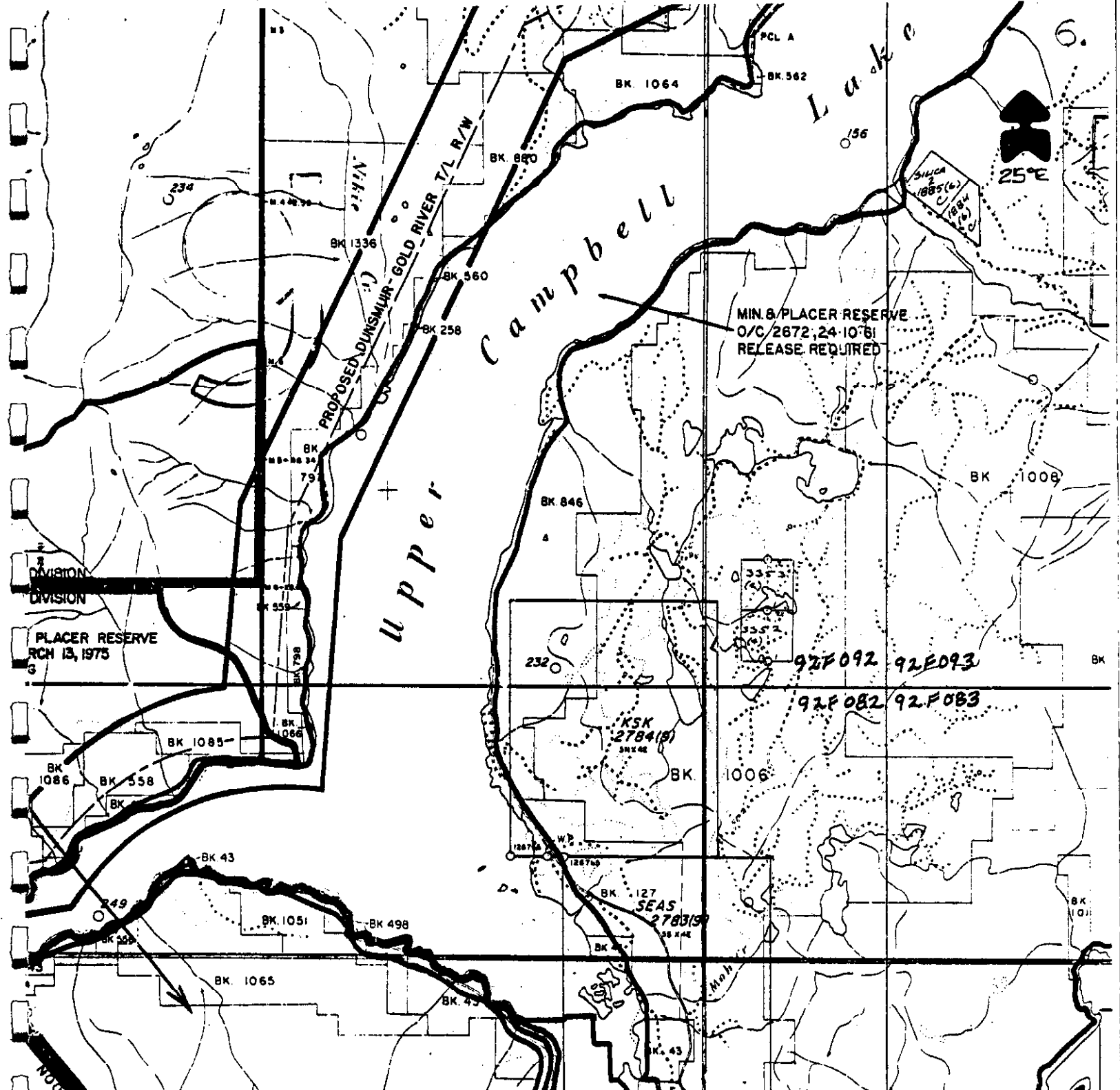
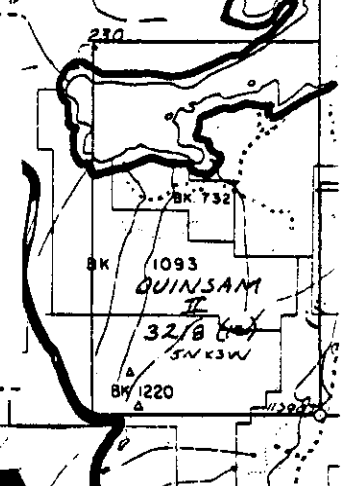


FIGURE B

NMIS RESOURCES INC  
CLAIM MAP  
 Upper Campbell Lake  
 M02F13E  
 Nanaimo Mining Division

GEAREX ENGINEERING mission bc



R/W

## PROPERTY HOLDINGS

```

** ** ** ** ** ** ** ** ** ** ** ** ** ** ** ** ** ** ** ** ** ** ** ** ** ** ** ** ** ** ** ** ** ** ** ** **
*CLAIM NAME      RECORD NO.    UNITS      ANNIVERSARY  *
*   KSK          2784          20         Sep 08, 1992 *
** ** ** ** ** ** ** ** ** ** ** ** **^

```

The claim is recorded in the NANAIMO MINING DIVISION and is plotted on mineral map 92F13E.

The anniversary date reflecting the three years of assessment work filed, is conditional upon the acceptance of the subject work for assessment credits.

## LOCATION & ACCESS

49054'N

125039'W

92F13E

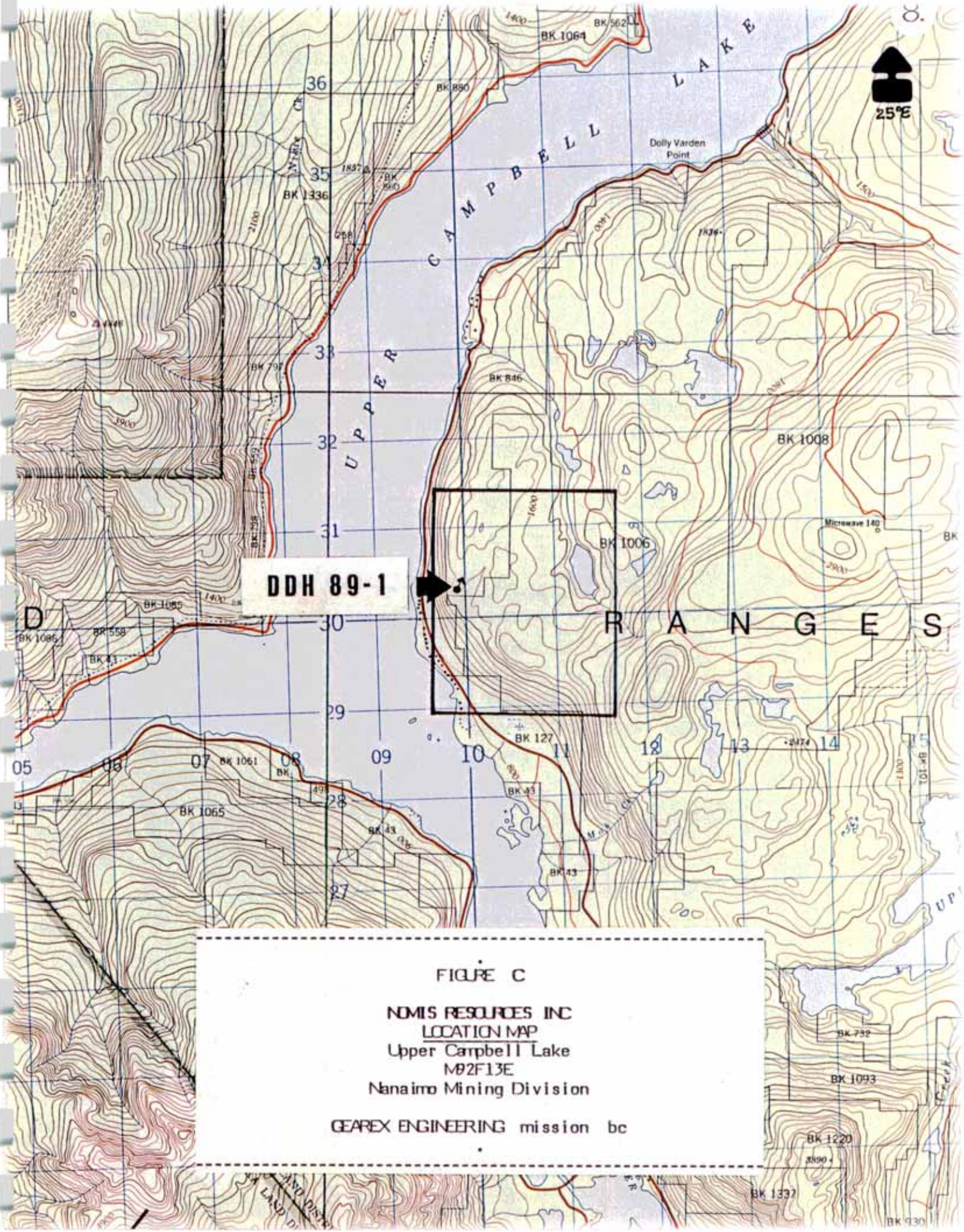
The KSK claim covers private, as well as Crown land, located along the eastern shore of Upper Campbell Lake. British Columbia highway #28 skirts the shore line.

The area is reached by driving westerly from Campbell River, British Columbia, passing Quinsam Lake. The highway parallels the property on its west side, at about a distance of about 22 kilometers westerly from this juncture.

Old logging roads provide access to some parts of the private lands located along the western portion of the property, while a network of logging roads exists along the eastern portion.

## HISTORY

The writer is not aware of any previous work performed on the property.



**DDH 89-1**

**FIGURE C**

**NOMIS RESOURCES INC**  
**LOCATION MAP**  
 Upper Campbell Lake  
 M02F13E  
 Nanaimo Mining Division

GEAREX ENGINEERING mission bc



## GENERAL GEOLOGY

Upper Triassic, Karmutsen volcanics, consisting of basaltic lava, pillow lava, breccia, and tuff, are intruded by Jurassic rocks consisting of granodiorite, quartz diorite, granite, and quartz monzonite, describing a north-westerly-trending contact. The volcanics lie to the west of the intrusives.

This contact has been mapped as passing within about 2 kilometers of the northeast corner of the subject property.

As the intrusives lie to the east, the property is comprised mainly of Karmutsen volcanics.

## DESCRIPTION OF DRILLING OPERATION

Drilling period: July 18 - 25, 1989

Size: NQ core

Collar location: see location map.

Collar elevation: approximately 1500 feet ASL.

Direction: 023 degrees Azimuth.

Dip of hole: minus 59°.

Dip tests: none taken.

Depth: 650 feet. *198.12 metres*

## DESCRIPTION OF DRILLING RESULTS

The full length of the drill core is comprised of variegated volcanics as shown graphically on Figure D: Diamond Drill Hole Section.

The rock geochemical analytical results of samples taken are listed on the appended Min En Labs - ICP Report. The requisite sample numbers are indexed on Figure D.

## DIAMOND DRILL HOLE LOG

---

### DIAMOND DRILL HOLE 89-1

#### SYNOPSIS

The complete hole represents a cross section of lava flows, in many cases amygdaloidal, which have been subjected to slight, to moderate chlorite, epidote, and hematite alteration.

0 - 10	Casing
10 - 21	Red with epidote-filled amygdules.
21 - 36	Grey, felty textured section, dyke?
36 - 46	Grey, with amygdules filled with epidote and white zeolite? surrounded by dark-green chlorite rims.
46 - 56	Grey, fine-grained, 1 cm. white zeolite? veins at low core angle.
56 - 61	Grey-green, white amygdules with chlorite selvages.
60	Sample 14401
61 - 87	Sample 14402. Black alteration of phenocrysts, some specks of sulphides. Grey-green, mottled, some white veining, some light-green alteration, black chlorite alteration of amygdules results in black mottling.
87 - 95	Alteration halo.
92	Sample 14403. Chlorite alteration of vesicles; bornite?, chalcopyrite in vesicles.
95 - 101	Grey, fine-grained, low-angle flow banding.
101 - 108	Alteration halo, as above.
108 - 248	Dark-green, mottled, mostly amygdaloidal, altered to dark-green chlorite. Several sections altered light grey, amygdules bleached. Some thin, white, ?zeolite veining.
165 - 170	Section is more continuously fine grained.
175 - 210	Fragmental volcanic, similar to above but displaying distinct angular clasts consisting of 3-5 cm. pieces of fine grained grey volcanics (30%).
245 - 249	Grey green, fine grained with epidote amygdule filling and chlorite rims.
249 - 255	Felty textured, dark phenocrysts, lighter coloured matrix.
255 - EOH	Variegated lavas, amygdaloidal as well as fine grained, felty-textured sections to end of hole. Generally grey green, some portions show slight reddish brown oxidation. Total hole is very competent.
292 - 297	Sample 14404. Chlorite alteration of phenocrysts containing chalcopyrite, bornite in chlorite, 0.9%?
385 - 400	Incipient increase in dark-chlorite alteration, broken fine-grained rock with shiny, chloritic, fracture surfaces.
387 - 392	Sample 14405. Sulphide specks within dark coloured alteration.
478 - 480	Sample 14406. Dark alteration with pyrite, and very fine-grained pyrite stringers.
519 - 522	Sample 14407. Hematite alteration as fine red stringers.
525 -	Start of quartz, epidote and hematite alteration, quite strong, changing rock colour to light-green. Epidote is quite common to end of hole; also as veinlet filling.
608 - 613	Sample 14408. Hematite alteration evident.
650	E.O.H.

FEET

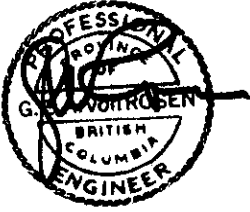
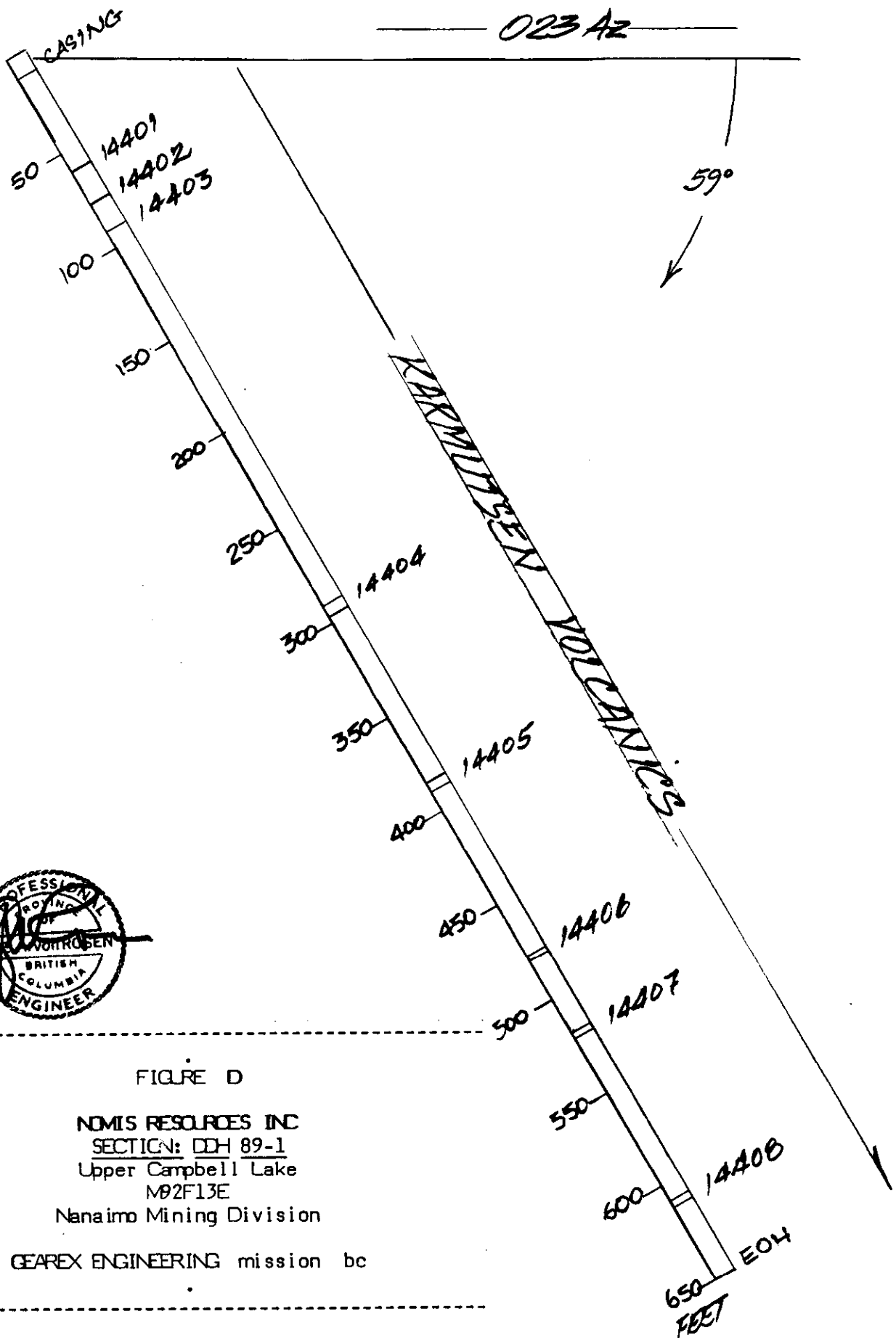


FIGURE D

NOMIS RESOURCES INC  
 SECTION: DDH 89-1  
 Upper Campbell Lake  
 NØ2F13E  
 Nanaimo Mining Division  
 GEAREX ENGINEERING mission bc

## RESULTS OF DIAMOND DRILL TEST

Although the rock cored by the test hole did contain sections mineralized by pyrite, chalcopyrite, and in places, bornite, albeit in low concentrations, analysis has indicated that the tenor of the mineralization is not commercial at this time.

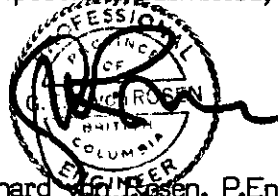
## CONCLUSIONS

The drill hole did not intersect mineralization of sufficient concentration to warrant any further exploration in the nearby area.

## RECOMMENDATIONS

Further work in the area of the claims could entail grass-roots exploration of those areas that are closer to the intrusive contact; no drill targets are in evidence at this time.

Respectfully submitted,



Gerhard W. Rosen, P.Eng.

November 28, 1989

BIBLIOGRAPHY

Muller, J.E.

- 1977 : Geology of Vancouver Island,  
Open File 463, Geological  
Survey of Canada.

APPENDIX "A"

Min En Laboratories  
ICP Report  
Aug 30: file 9V-0985-RJ1



## CERTIFICATE OF QUALIFICATIONS

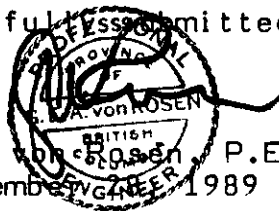
I, Gerhard von Rosen, reside in Mission, British Columbia, at 33176 Richards Avenue.

I have been practicing my profession of consulting geologist since my graduation from the University of British Columbia in 1962 with a Bachelor of Science, and in 1966, with a Master of Science degree in Honours Geology.

I have prepared the subject report from logging the core located at 12580 243rd Street, Maple Ridge, B.C., and from study of GSC Open File 463.

I have received the fees and expenses invoiced regarding the preparation of this report, as this is my sole remuneration. I have no interest in the company, its properties, or its shares, neither do I expect to receive any.

Respectfully submitted,



Gerhard von Rosen, P.Eng.  
November 1989



STATEMENT OF EXPENSES1989 DIAMOND DRILL PROGRAM COSTS ON "KSK" MINERAL CLAIM**SUPERVISION:**

Sidney C. Johnson  
25745-102 Avenue  
RR3 Maple Ridge, B.C.  
V2X 8X7

July 18-25	8 days x \$150/	1,200.00
July 27-28	2 days x \$150/	300.00
Costs, vehicle, room/board, etc.		627.69
Total.....		\$2,127.65

**DRILL CONTRACT**

Newmac Industries Ltd.  
5351 Blundell Place  
Kamloops, B.C.  
V2C 6C8

Drill contract	650 feet NQ x \$16/	\$10,400.00
Mobilization, accommodation, etc.		2,224.00
Total.....		\$12,624.00

**ANCILLARY SERVICES**

Norms Backhoe + Excavating Ltd.  
Box 760  
Campbell River, B.C.  
V9W 6J3

Cat & Lowbed costs.....	1,947.00
-------------------------	----------

Mike Hamilton Logging Ltd.  
Campbell River, B.C.

Loader.....	225.00
-------------	--------

Helmut E. Klinkicht  
12580-243rd Street  
Maple Ridge, B.C.  
V2X 7Z4

Transporting core.....	200.00
------------------------	--------

MinEn Labs  
North Vancouver, B.C.

Analyses.....	136.00
---------------	--------

Gearex Management Ltd.  
33176 Richards Avenue  
RR5 Mission, B.C.  
V2V 5X4

Assessment Report.....	3,000.00
------------------------	----------

Total Costs of drilling 650 feet NQ core..... ~~\$32,883.65~~  
20,259.65