

REC NO.	1221	66
SECTION		
FILE NO.		

TEEPER MOUNTAIN PROJECT 1989  
(C-88-003)

Atlin Mining Division  
British Columbia

NTS: 104M/10, 104M/15

Latitude: 59 43'N  
Longitude: 134 39'W

SUB-RECORDER

6.13.89

GEOLOGICAL BRANCH  
ASSESSMENT REPORT

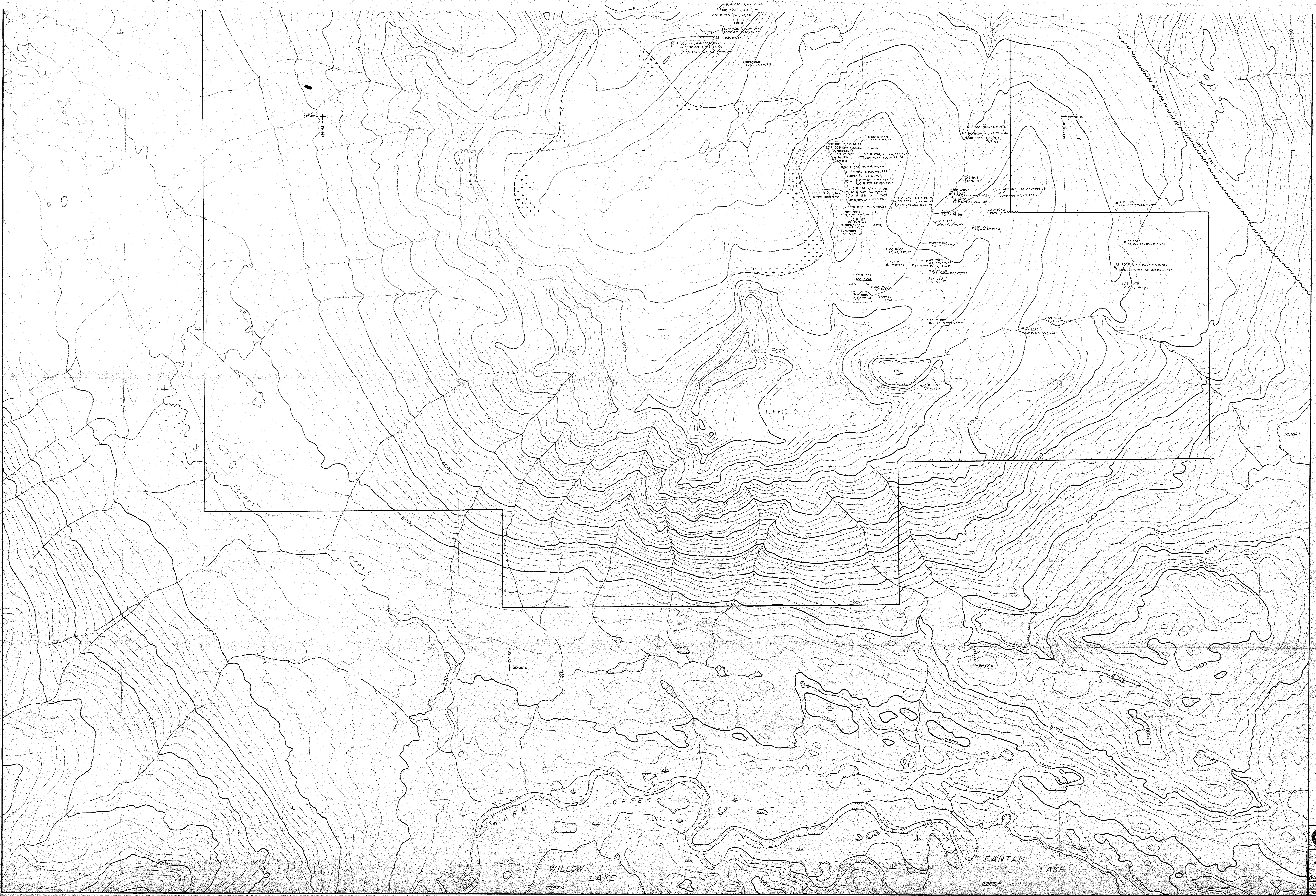
19,438

For:  
Cyprus Gold (Canada)Ltd.  
#1810-1055 West Hastings St.,  
Vancouver, B.C.  
V6E-2E9

By:  
Jim Cuttle  
#82-1036 Premier St  
North Vancouver, BC  
V7J-2H2

November 10, 1989

Part 1 of 2



- LEGEND**
- TERTIARY (?)
    - NNE faulting
    - Brownish grey to dark grey/green fine grain andesite dykes
    - Mineralization along reactivated NW to NNW structures
    - Andesite (similar to above unit)
    - Traditional quartz veins
    - NNE faulting
  - CRETACEOUS
    - Aplite, felsite, to banded rhyolite
    - Intermediate to mafic felsic porphyry / granodiorite, granite (includes T.B. Stock)
  - EARLY JURASSIC
    - Llewellyn Fault - NNW regional structure
  - PALEOZOIC - PROTEROZOIC
    - Quartz mica schist, argillaceous phyllite, amphibolite, quartz hornblende
    - Iron stain
  - Rock sample  
As ppm, Cu ppm, Au ppm, Pb ppm
  - Stream sediment  
As ppm, Au ppm, Cu ppm, Pb ppm, Sb ppm, Zn ppm
  - Assay results

GEOLOGICAL BRANCH  
ASSESSMENT REPORT

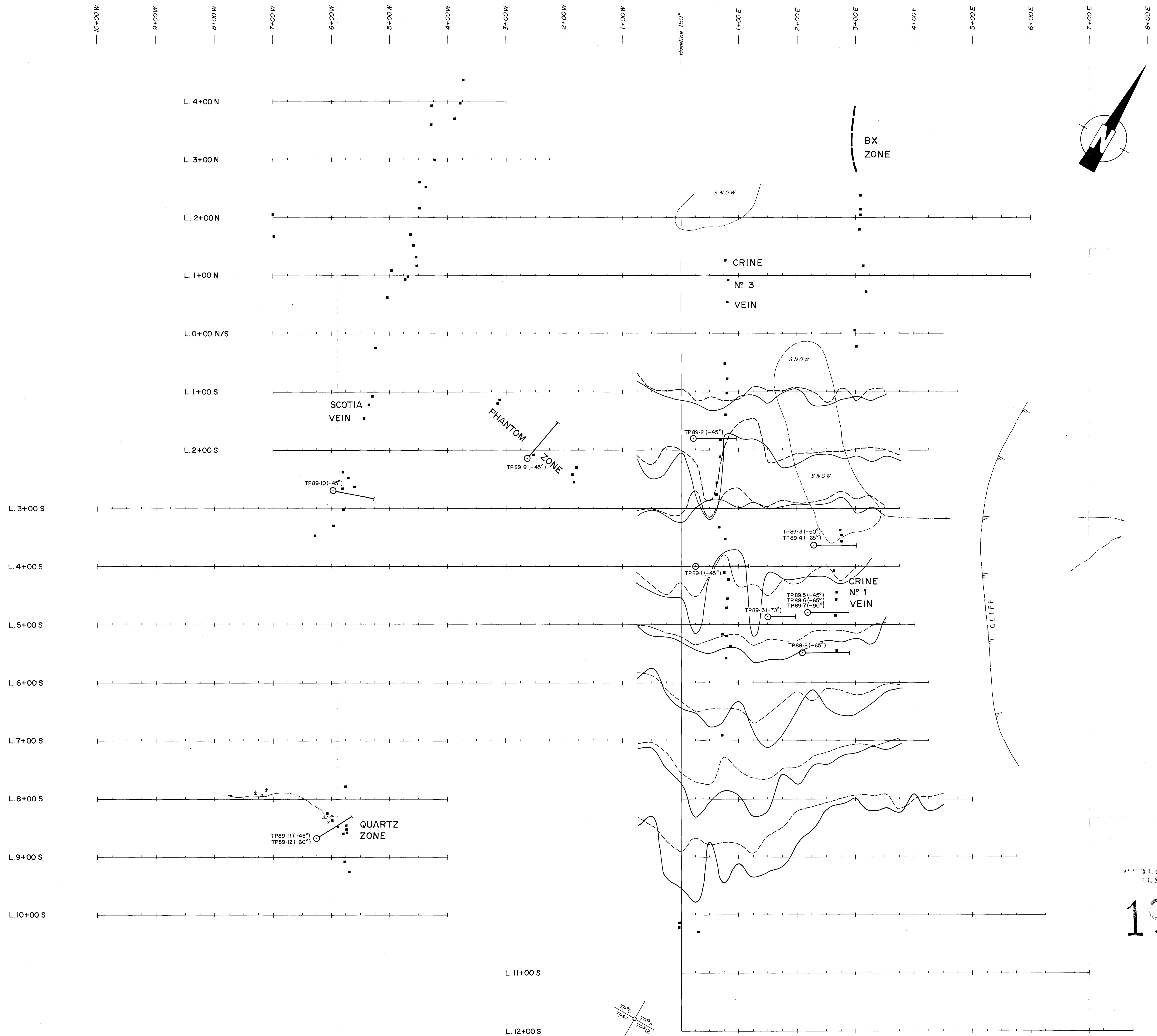
19,438  
Part 1 of 2



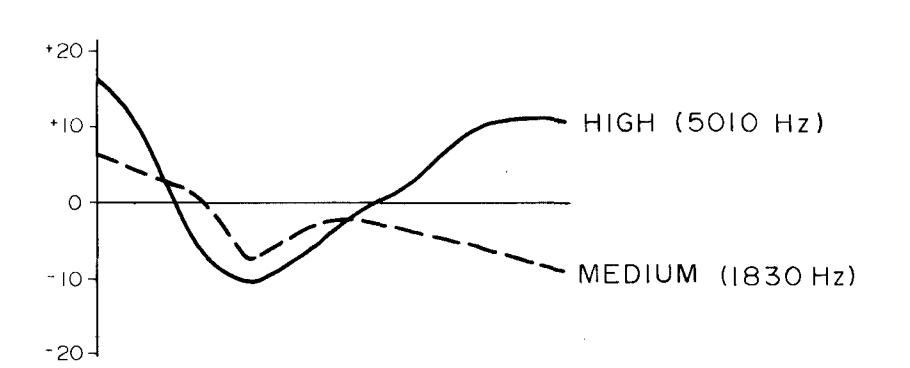
**CYPRUS GOLD**  
(Canada) Ltd.

TEEPÉE PROJECT  
PROPERTY ROCK SAMPLE RESULTS  
(South Sheet)  
(with geology, grid location & stream sediments)

DRAWN BY: J.C. SCALE: 1:10000  
DATE: 02/1989 MAP No. 28



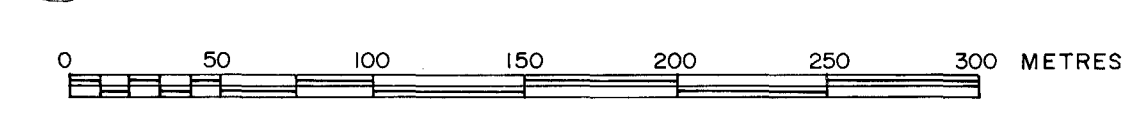
**LEGEND**



- — Diamond Drill Hole
- — Sulphide rich float

GEOLOGICAL BRANCH  
ASSESSMENT REPORT

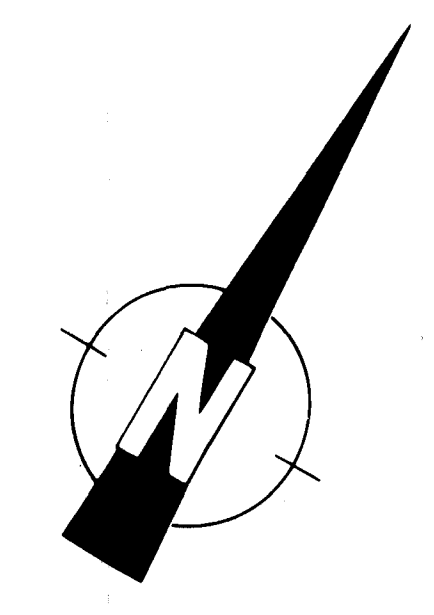
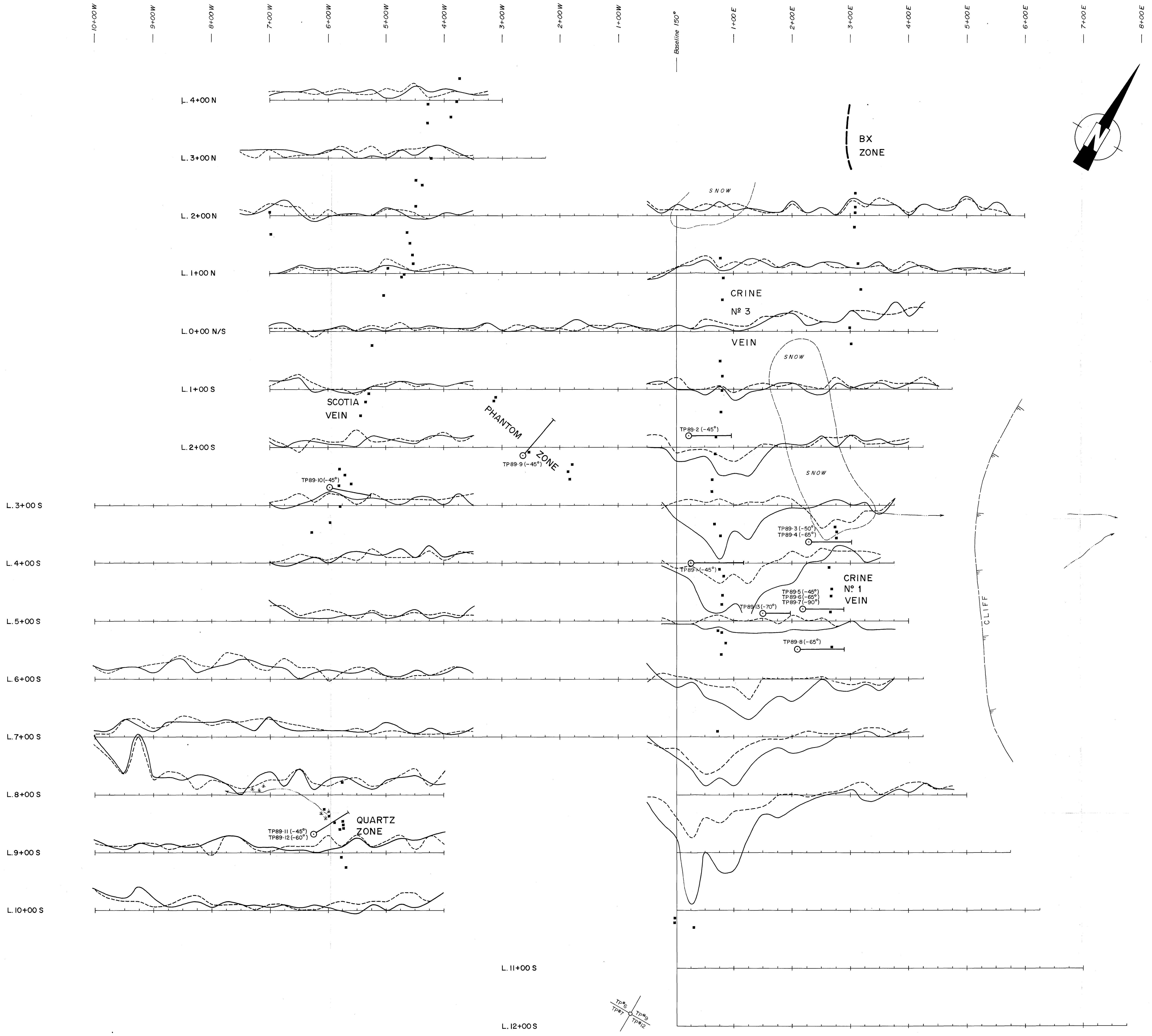
19,438 Part 1 of 2



**CYPRUS GOLD**  
(Canada) Ltd.

— TEEPEE PROJECT —  
ATLIN, B.C.  
**SHOOTBACK**  
(Crine Zone)  
(100m SEPARATION)

DRAWN BY	J.C. / wgl.	SCALE	1: 2500
DATE	SEPTEMBER 1989	MAP No.	4b



**LEGEND**

5010 Hz  
1830 Hz

Diamond Drill Hole

Sulphide Content Report

19,438

Part 1 of 2

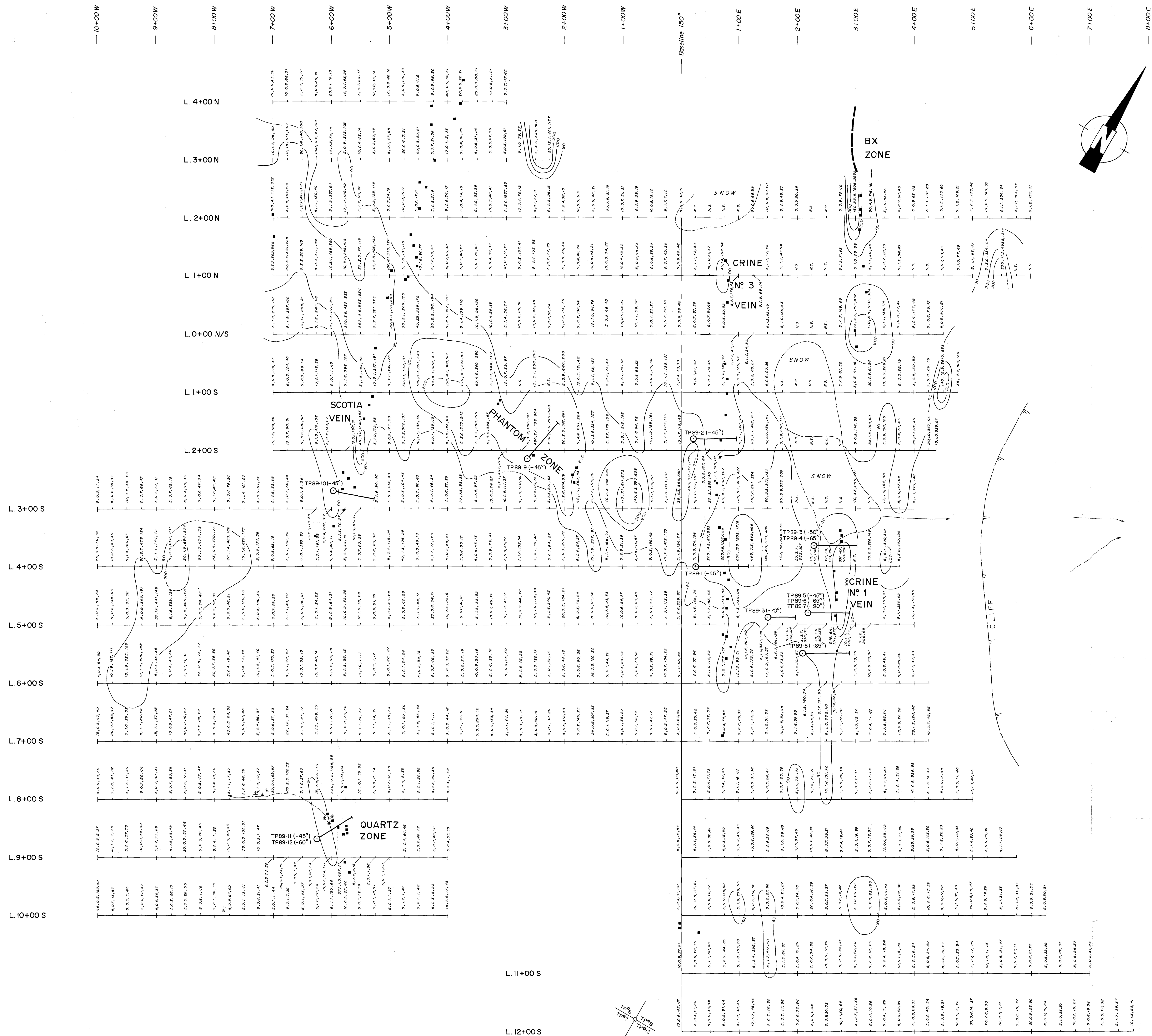
0 50 100 150 200 250 METRES

**CYPRUS GOLD**  
(Canada) Ltd.

- TEEPEE PROJECT -  
ATLIN, B.C.

**SHOOTBACK**  
(Scotia & Crine Zones)  
(50m SEPARATION)

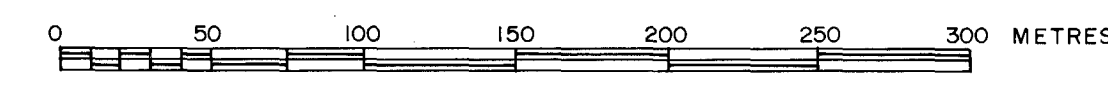
DRAWN BY	J.C. / w.g.l.	SCALE	1 : 2500
DATE	SEPTEMBER 1989	MAP No.	4g



- LEGEND**
- 48, 26, 101, 78 Grid sample location  
Au ppm, Ag ppm, As ppm, Pb ppm
  - - - - - Lead contour  
90 ppm, 200 ppm, 500 ppm
  - Diamond drill hole
  - Sulphide rich float

GEOLOGICAL BRANCH  
ASSESSMENT REPORT

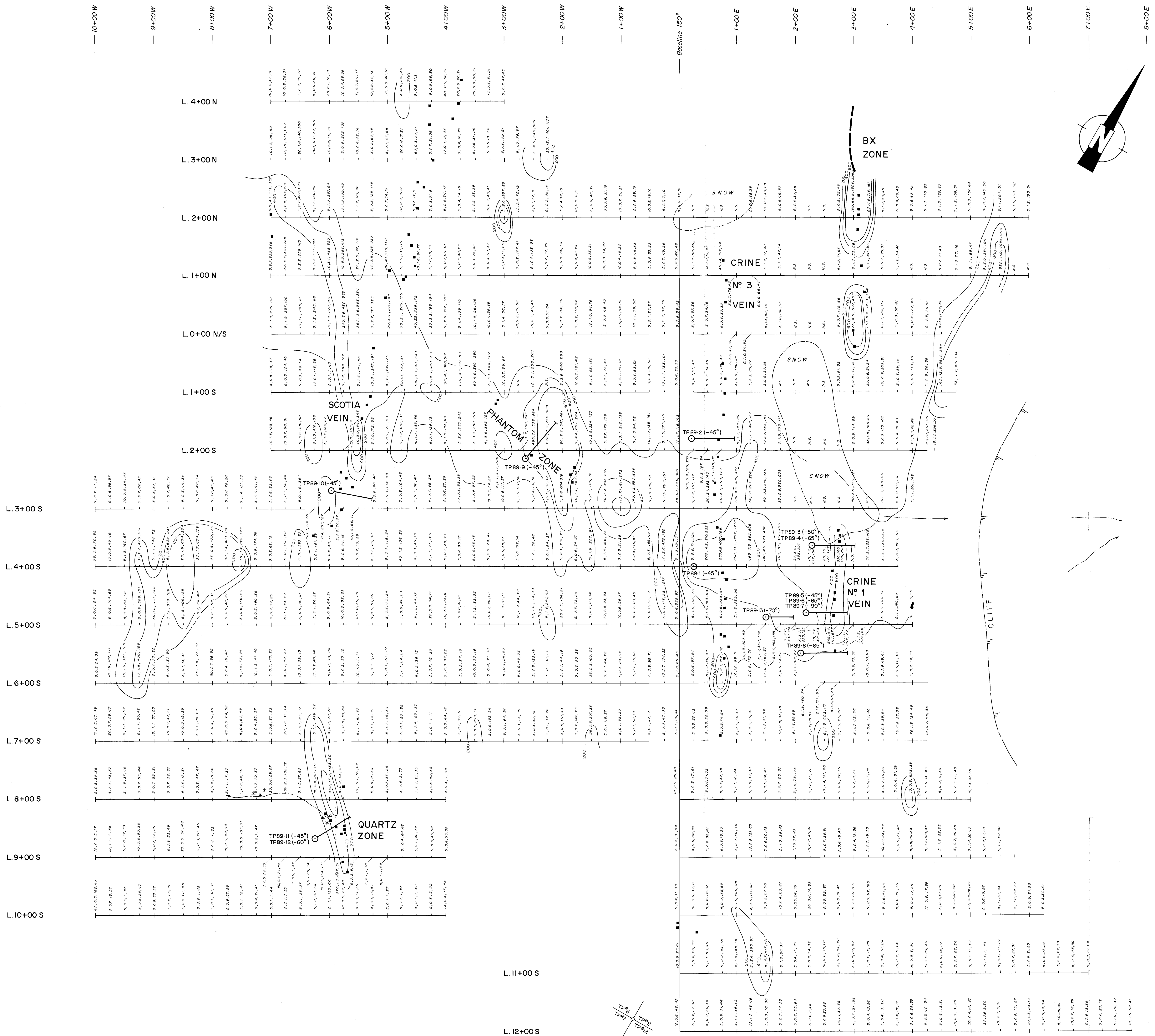
**19,438**  
Part 1 of 2



**CYPRUS GOLD**  
(Canada) Ltd.

- TEEPEE PROJECT -  
ATLIN, B.C.  
**LEAD GEOCHEMISTRY**  
(Scotia & Crine Zones)

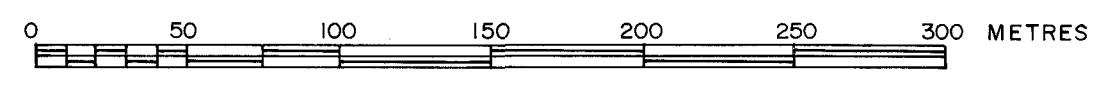
DRAWN BY J.C. / w.g.t. SCALE 1:2500  
DATE SEPTEMBER 1989 MAP No. 3d



- LEGEND**
- 45, 21, 100, 411 Grid sample location
  - Au ppb, Ag ppm, As ppm, Pb ppm
  - Arsenic contour
  - 200 ppm, 400 ppm, 600 ppm
  - Diamond drill hole
  - Sulfide rich float

GEOLOGICAL BRANCH  
ASSESSMENT REPORT

19,438 Part 1 #2



**CYPRUS GOLD**  
(Canada) Ltd.

— TEEPEE PROJECT —  
ATLIN, B.C.  
**ARSENIC GEOCHEMISTRY**  
(Scotia & Crine Zones)

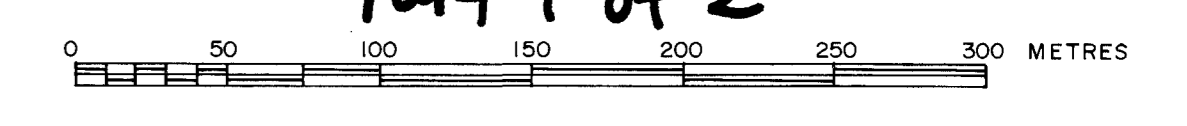
DRAWN BY J.C./w.g.l. SCALE 1:2500  
DATE SEPTEMBER 1989 MAP No. 3c



- LEGEND**
- TP 89-1 to 89-12 Grid sample location
  - Au ppm, Ag ppm, As ppm, Pb ppm
  - Silver contour 1.6 ppm, 3.0 ppm, 6.0 ppm
  - Diamond drill hole
  - Sulphide rich float

GEOLOGICAL BRANCH  
ASSESSMENT REPORT

19,438  
Part 1 of 2

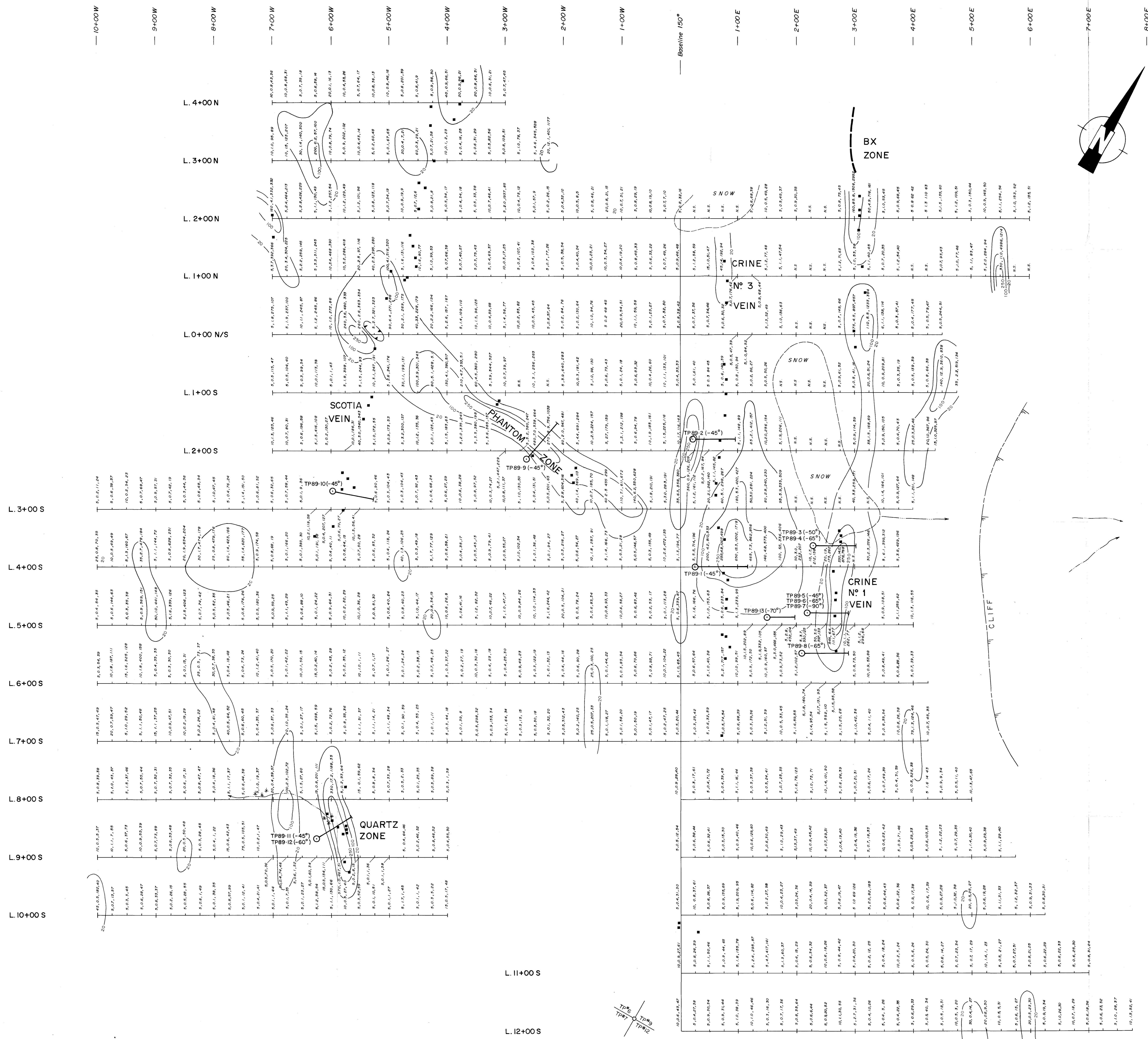


**CYPRUS GOLD**  
(Canada) Ltd.

- TEEPEE PROJECT -  
ATLUN, MD, BC

**SILVER GEOCHEMISTRY**  
(Scotia & Crine Zones)

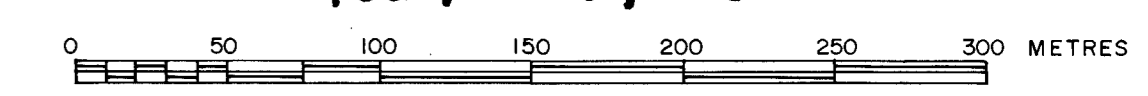
DRAWN BY	J.C. / w.g.	SCALE	1: 2500
DATE	SEPTEMBER 1989	MAP No.	3b



- LEGEND**
- ⊙ 40, 100, 250 Grid sample location
  - Diamond drill hole
  - Sulphide rich float
  - Gold contour: 20 ppb, 100 ppb, 250 ppb

GEOLOGICAL BRANCH  
ASSESSMENT REPORT

**19,438**  
Part 1 of 2



**CYPRUS GOLD**  
(Canada) Ltd.

- TEEPEE PROJECT -  
ATLIN, B.C.

**GOLD GEOCHEMISTRY**  
(Scotia & Crine Zones)

DRAWN BY	J.C. / w.g.i.	SCALE	1: 2500
DATE	SEPTEMBER 1989	MAP No.	3c