

LOG NO: 12 27
ACTION:
FILE NO:

1989 SUMMARY REPORT  
ON THE  
TREK 1-6 CLAIMS

VOLUME II

GEOCHEMICAL AND GEOPHYSICAL FIGURES

WINDSOR BRANCH  
ASSESSMENT REPORT

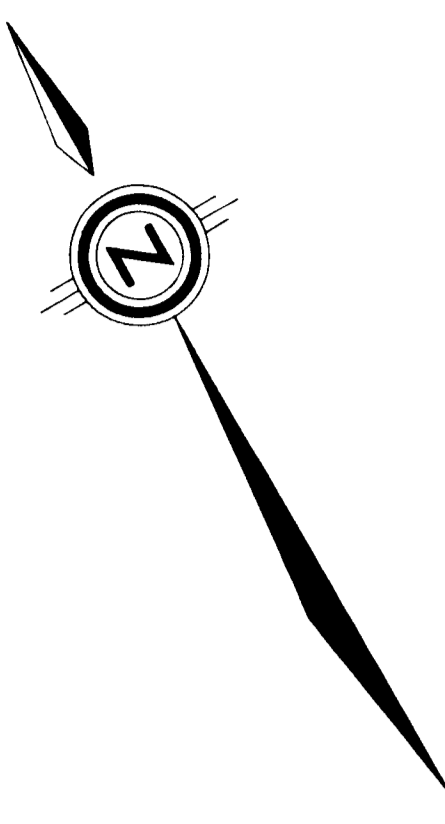
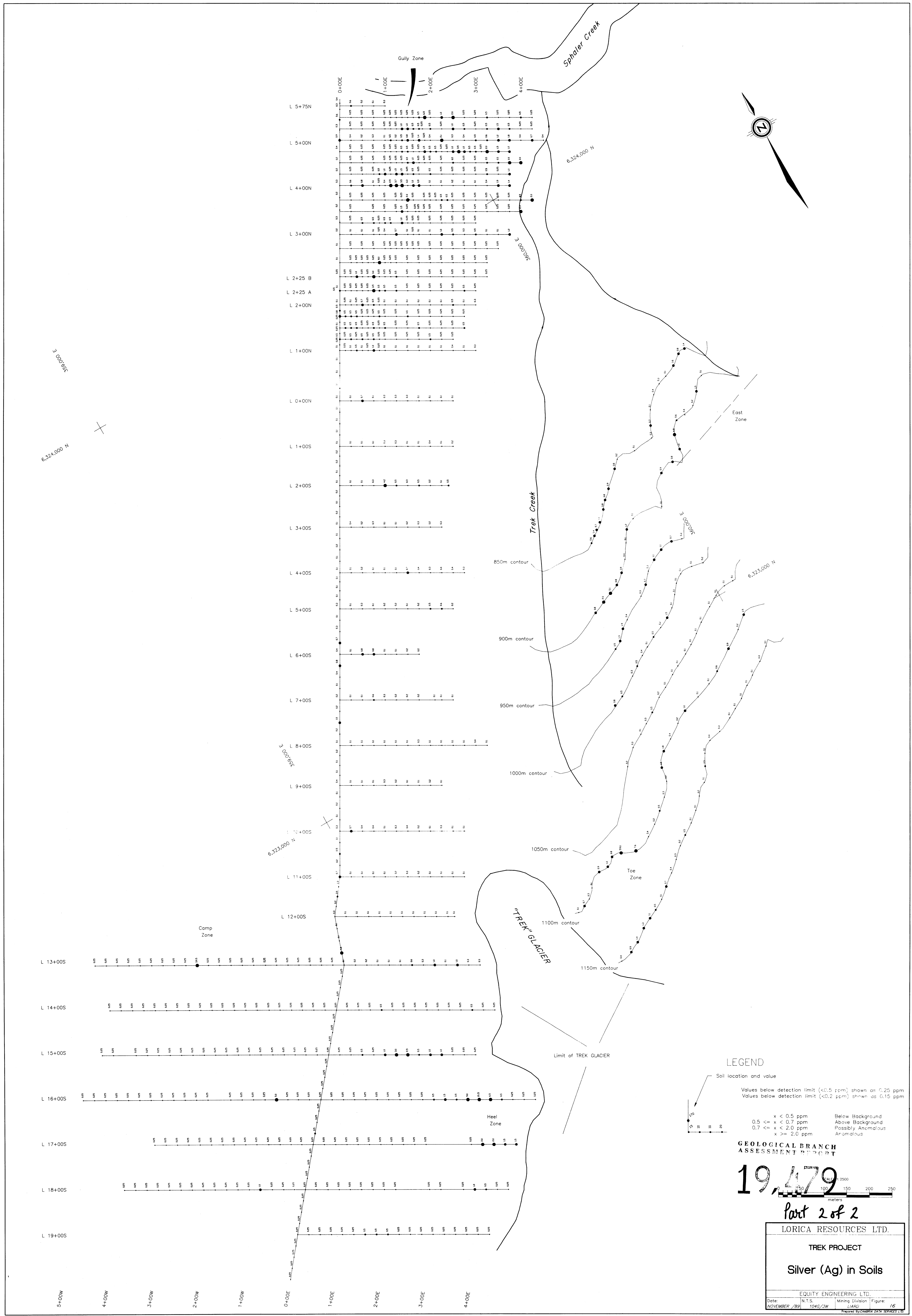
19,479

Part 2 of 2

-prepared for-  
LORICA RESOURCES LTD.

-prepared by-  
David A. Caulfield, FGAC

December, 1989



**LEGEND**

Soil location and value

Values below detection limit (<0.5 ppm) shown as 0.25 ppm  
 Values below detection limit (<0.2 ppm) shown as 0.15 ppm

x < 0.5 ppm	Below Background
0.5 ≤ x < 0.7 ppm	Above Background
0.7 ≤ x < 2.0 ppm	Possibly Anomalous
x ≥ 2.0 ppm	Anomalous

**GEOLOGICAL BRANCH  
ASSESSMENT REPORT**

**19,472** 1:2500

0 100 150 200 250  
meters

Part 2 of 2

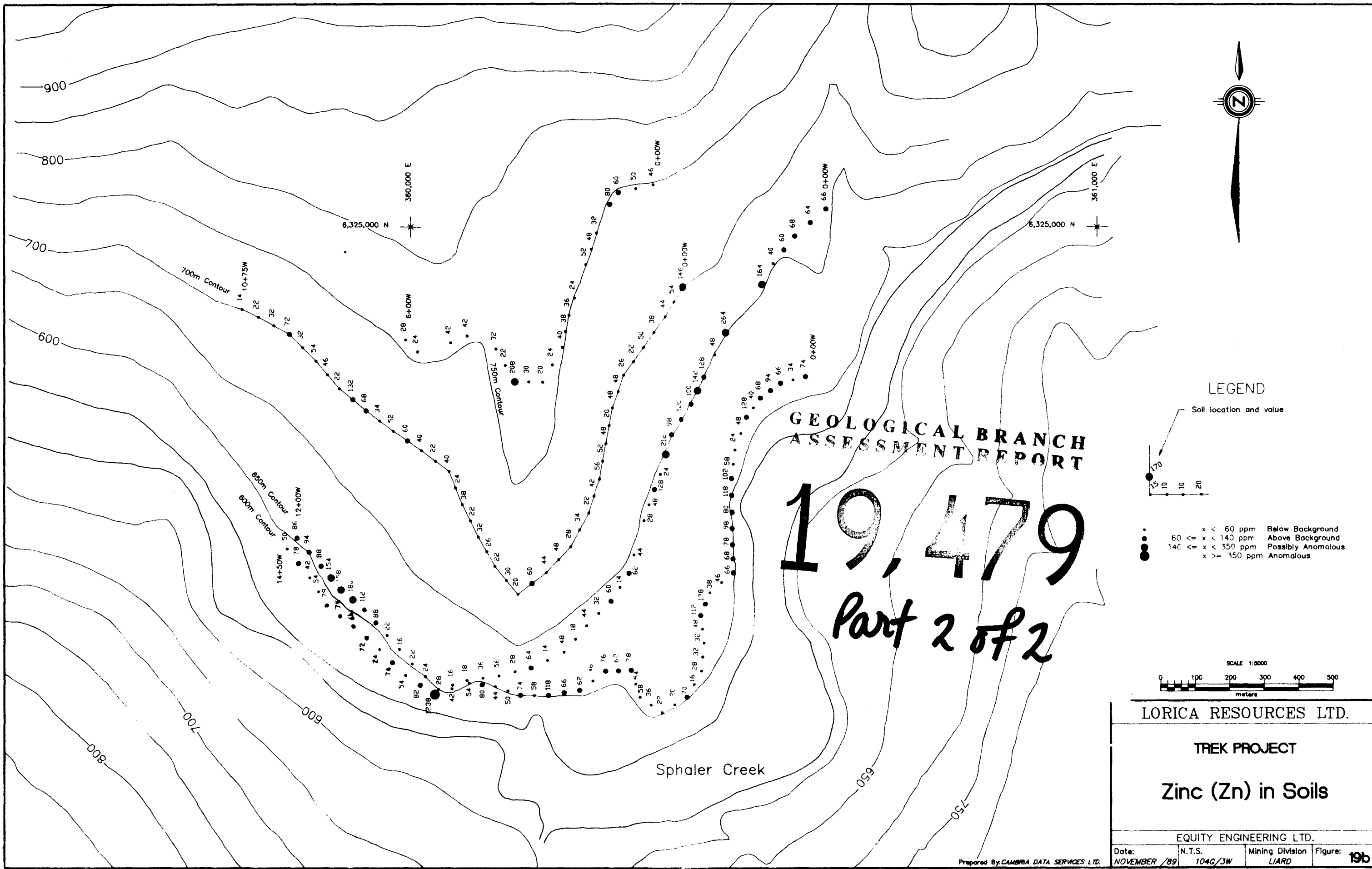
LORICA RESOURCES LTD.

**TREK PROJECT**

**Silver (Ag) in Soils**

EQUITY ENGINEERING LTD.

Date: NOVEMBER /89 N.T.S. Mining Division Figure: 16  
 1046/JW LARK Prepared by CANADA DATA SERVICES LTD.



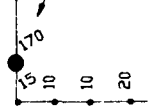
**GEOLOGICAL BRANCH  
ASSESSMENT REPORT**

**19,479**  
*Part 2 of 2*



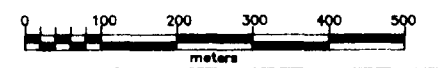
**LEGEND**

Soil location and value



- x < 60 ppm: Below Background
- 60 ≤ x < 140 ppm: Above Background
- 140 ≤ x < 350 ppm: Possibly Anomalous
- x ≥ 350 ppm: Anomalous

SCALE 1:6000



**LORICA RESOURCES LTD.**

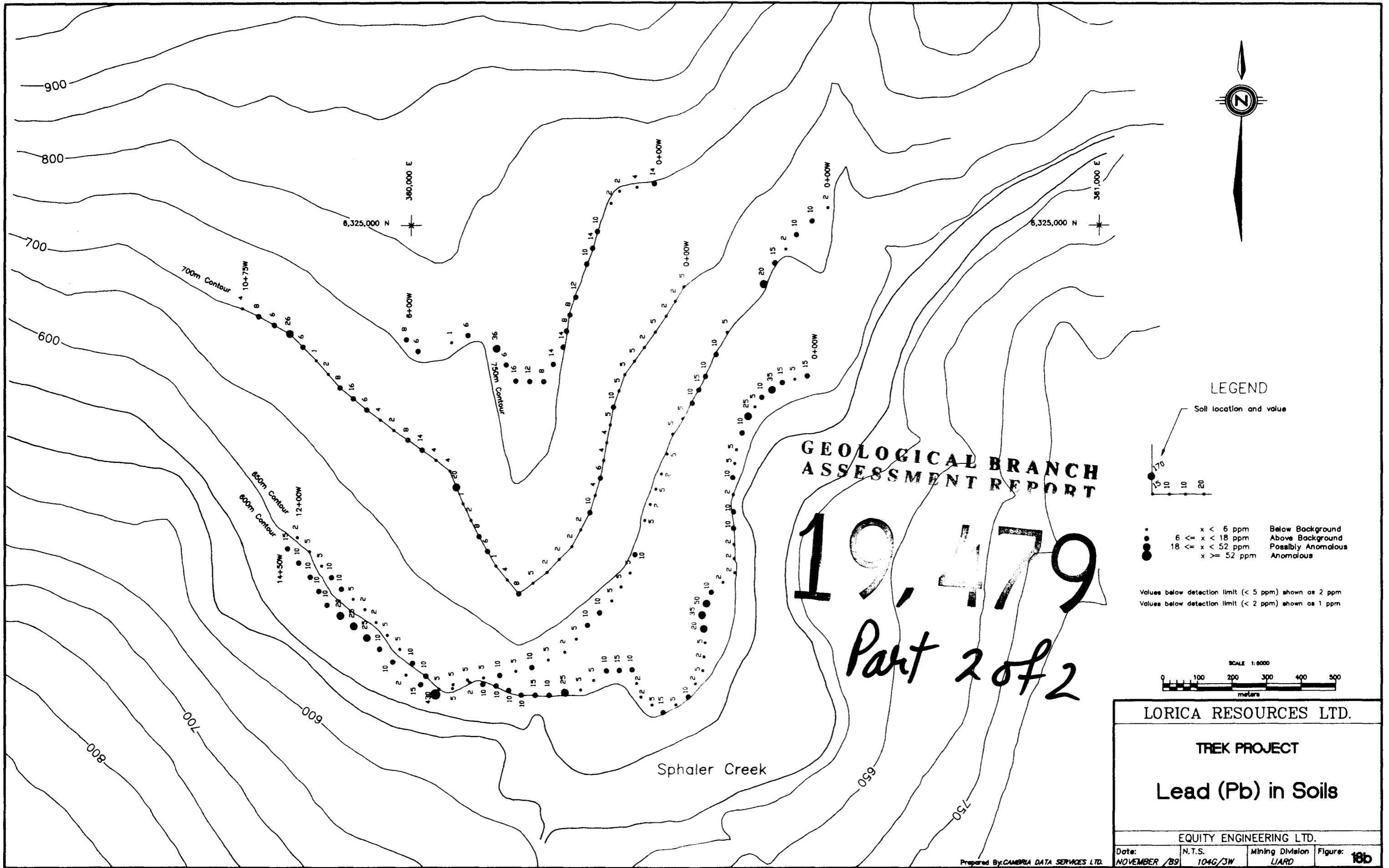
**TREK PROJECT**

**Zinc (Zn) in Soils**

EQUITY ENGINEERING LTD.

Date:	N.T.S.	Mining Division	Figure:
NOVEMBER /89	104G/3W	LIARD	19b

Prepared By: CAMBRIA DATA SERVICES LTD.



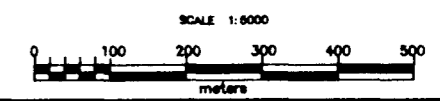
**GEOLOGICAL BRANCH  
ASSESSMENT REPORT**

**19,479**  
*Part 2 of 2*

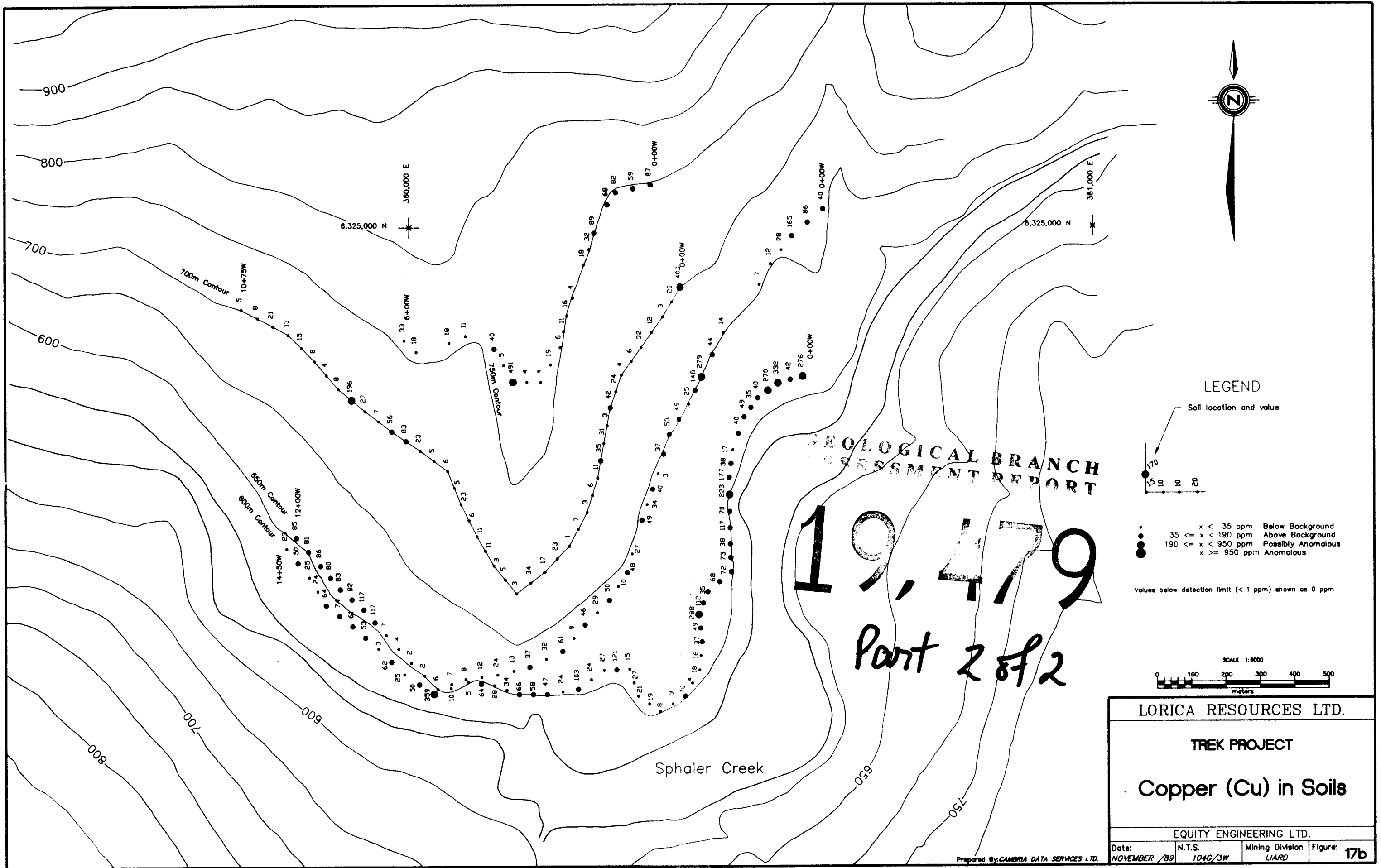
**LEGEND**

- Soil location and value
- 
- x < 6 ppm Below Background
  - 6 ≤ x < 18 ppm Above Background
  - x < 52 ppm Possibly Anomalous
  - x ≥ 52 ppm Anomalous

Values below detection limit (< 5 ppm) shown as 2 ppm  
 Values below detection limit (< 2 ppm) shown as 1 ppm



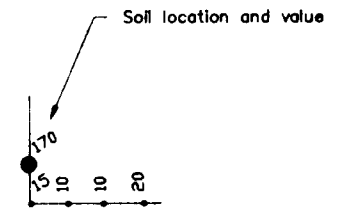
LORICA RESOURCES LTD.			
TREK PROJECT			
Lead (Pb) in Soils			
EQUITY ENGINEERING LTD.			
Date:	N.T.S.	Mining Division	Figure:
NOVEMBER /89	104G/3W	LIARD	18b



**19,479**  
 Part 2 of 2

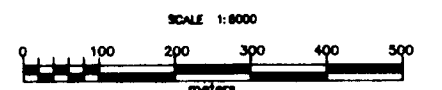


**LEGEND**

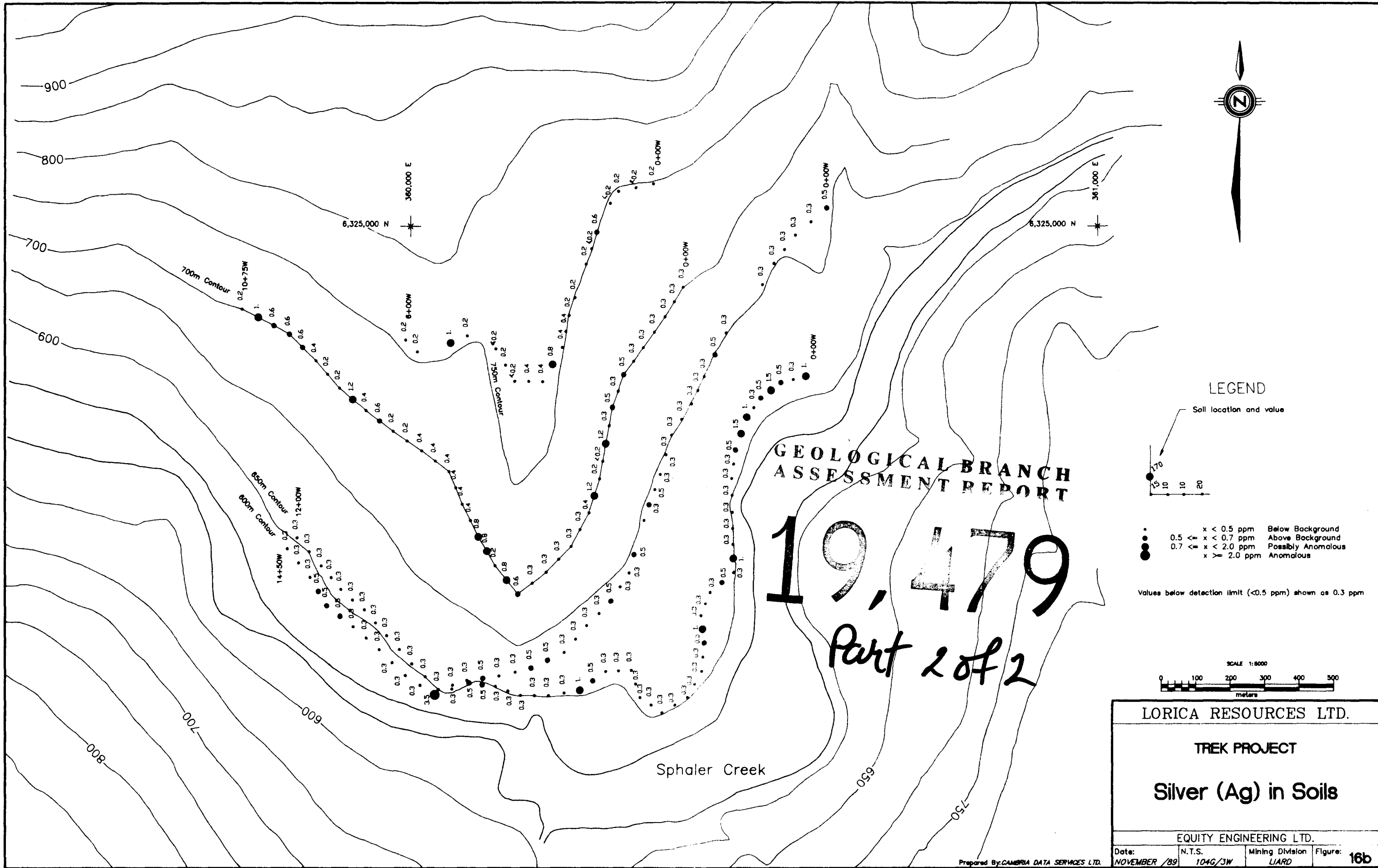


- x < 35 ppm Below Background
- 35 ≤ x < 190 ppm Above Background
- 190 ≤ x < 950 ppm Possibly Anomalous
- x ≥ 950 ppm Anomalous

Values below detection limit (< 1 ppm) shown as 0 ppm

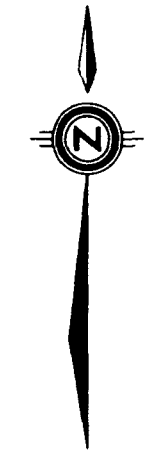


<b>LORICA RESOURCES LTD.</b>			
<b>TREK PROJECT</b>			
<b>Copper (Cu) in Soils</b>			
<b>EQUITY ENGINEERING LTD.</b>			
Date:	N.T.S.	Mining Division	Figure: <b>17b</b>
NOVEMBER /89	104G/3W	LIARD	



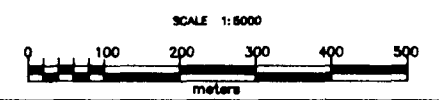
**GEOLOGICAL BRANCH  
ASSESSMENT REPORT**

**19,479**  
*Part 2 of 2*

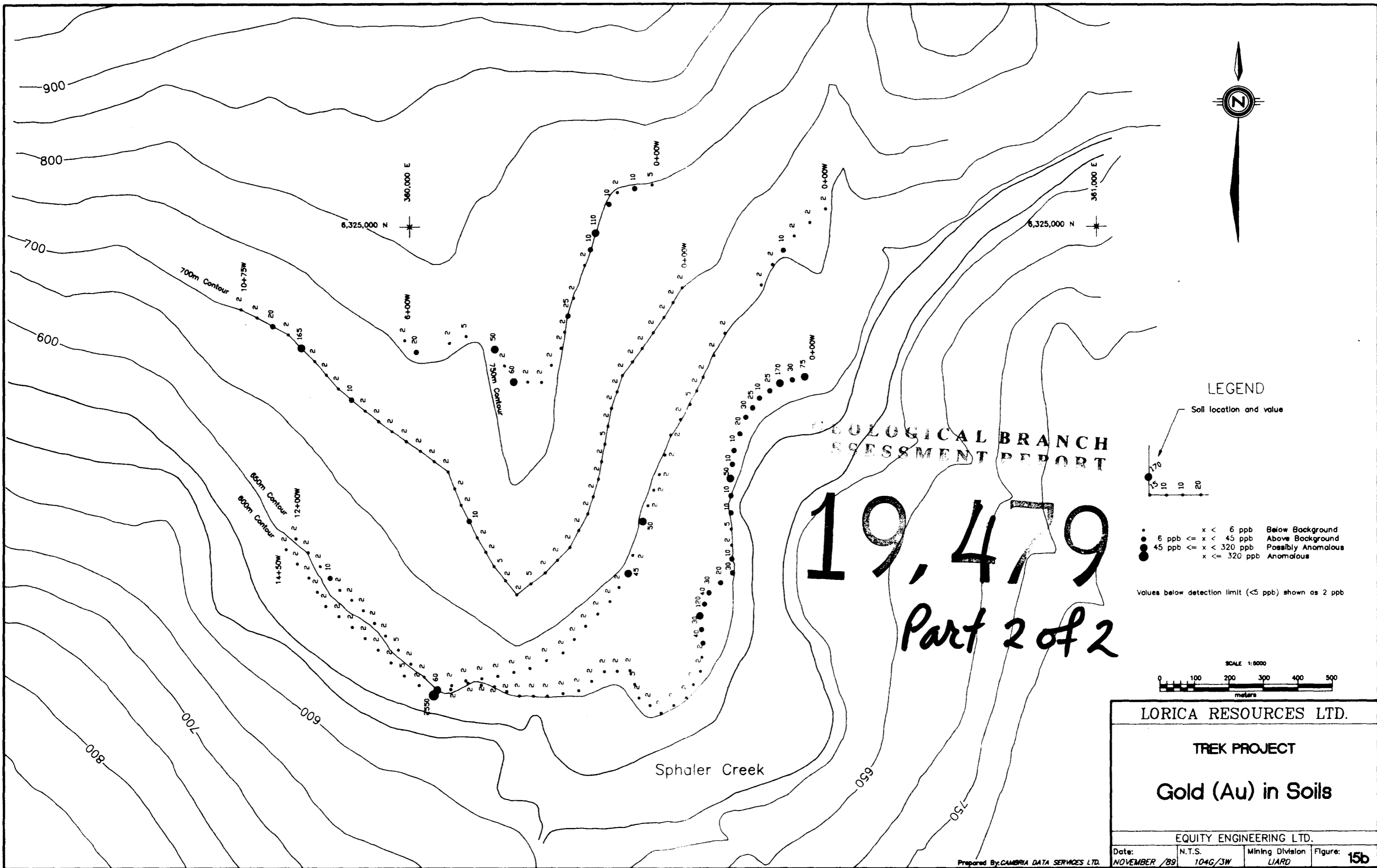


**LEGEND**

- Soil location and value
- x < 0.5 ppm Below Background
  - 0.5 ≤ x < 0.7 ppm Above Background
  - 0.7 ≤ x < 2.0 ppm Possibly Anomalous
  - x ≥ 2.0 ppm Anomalous
- Values below detection limit (<0.5 ppm) shown as 0.3 ppm



LORICA RESOURCES LTD.			
TREK PROJECT			
Silver (Ag) in Soils			
EQUITY ENGINEERING LTD.			
Date:	N.T.S.	Mining Division	Figure:
NOVEMBER /89	104G/3W	LIARD	16b



ECOLOGICAL BRANCH  
ASSESSMENT REPORT

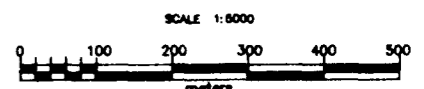
**19,479**  
*Part 2 of 2*



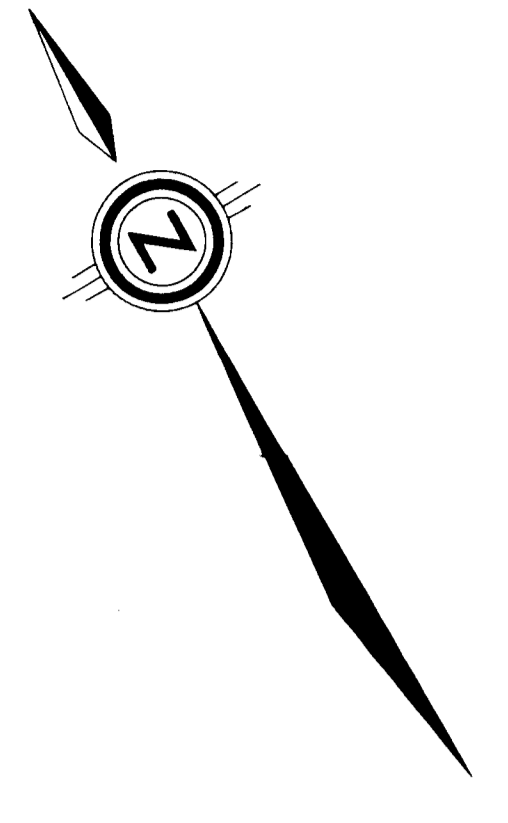
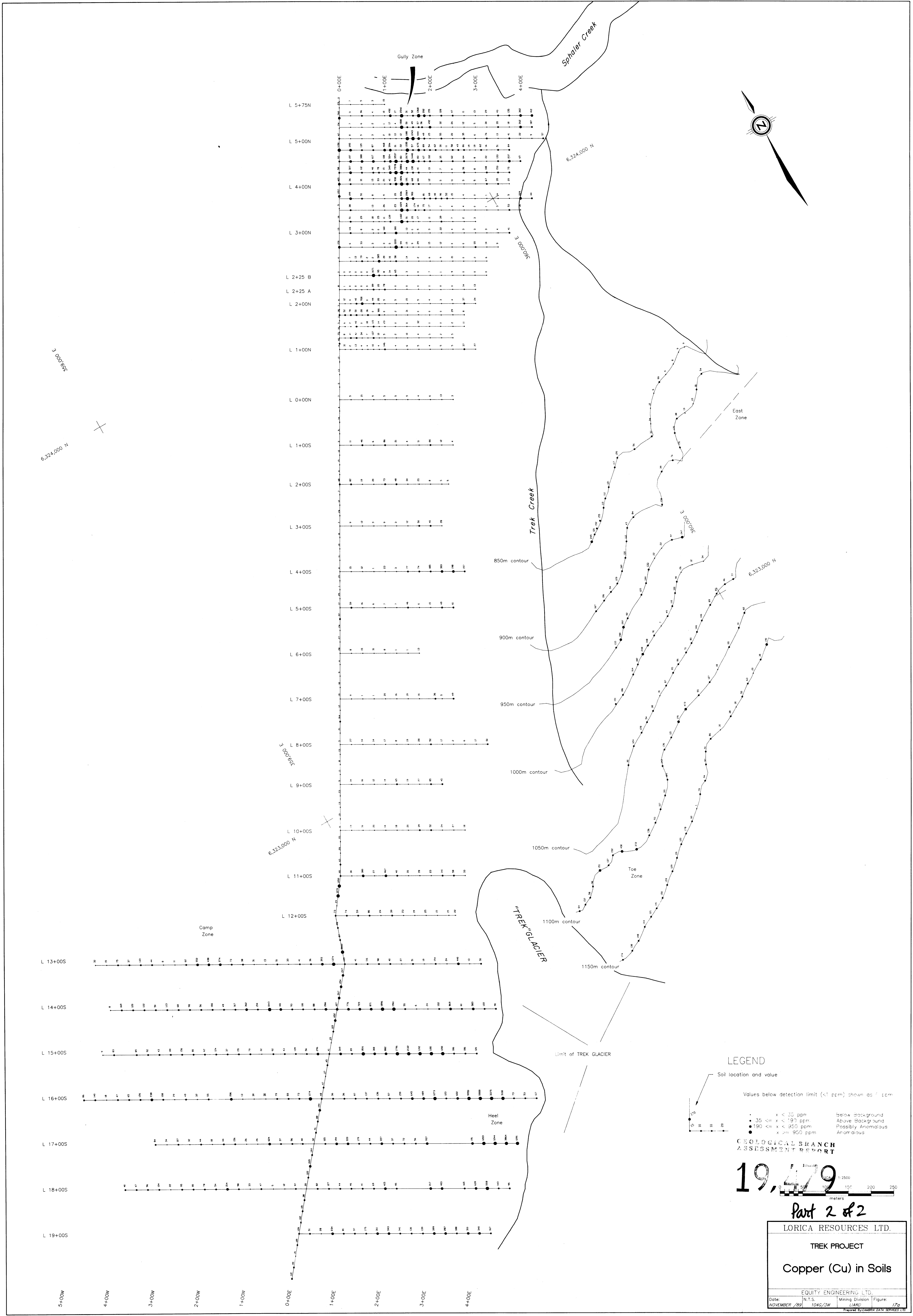
LEGEND

- Soil location and value
- x < 6 ppb Below Background
  - 6 ppb ≤ x < 45 ppb Above Background
  - 45 ppb ≤ x < 320 ppb Possibly Anomalous
  - x ≥ 320 ppb Anomalous

Values below detection limit (<5 ppb) shown as 2 ppb



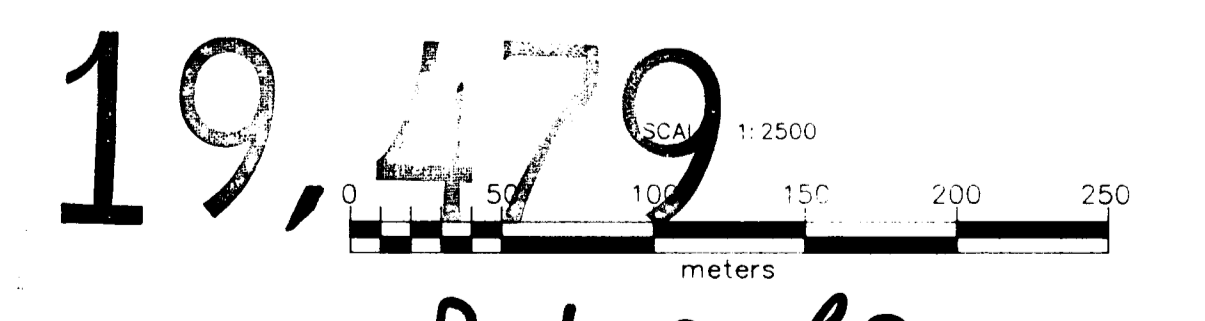
<b>LORICA RESOURCES LTD.</b>			
<b>TREK PROJECT</b>			
<b>Gold (Au) in Soils</b>			
<b>EQUITY ENGINEERING LTD.</b>			
Date:	N.T.S.	Mining Division	Figure:
NOVEMBER /89	104G/3W	LIARD	15b



**LEGEND**

- Soil location and value
- Values below detection limit (<1 ppm) shown as 1 ppm
- x < 35 ppm      below background
  - 35 <= x < 190 ppm      Above Background
  - 190 <= x < 950 ppm      Possibly Anomalous
  - x >= 950 ppm      Anomalous

CEOLOGICAL BRANCH  
ASSESSMENT REPORT

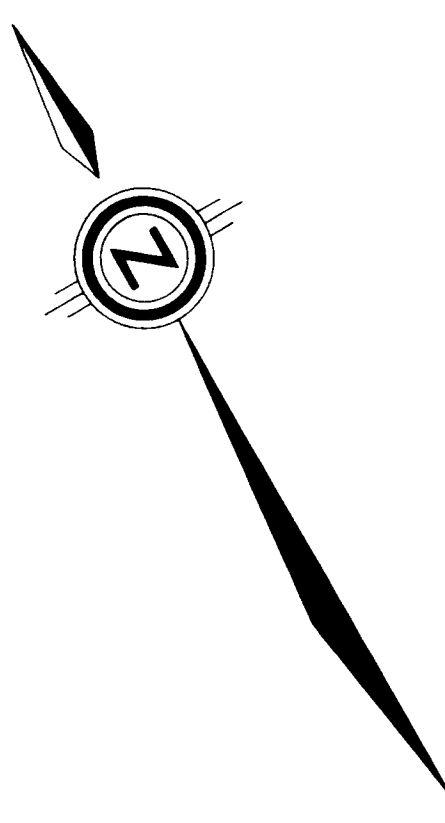
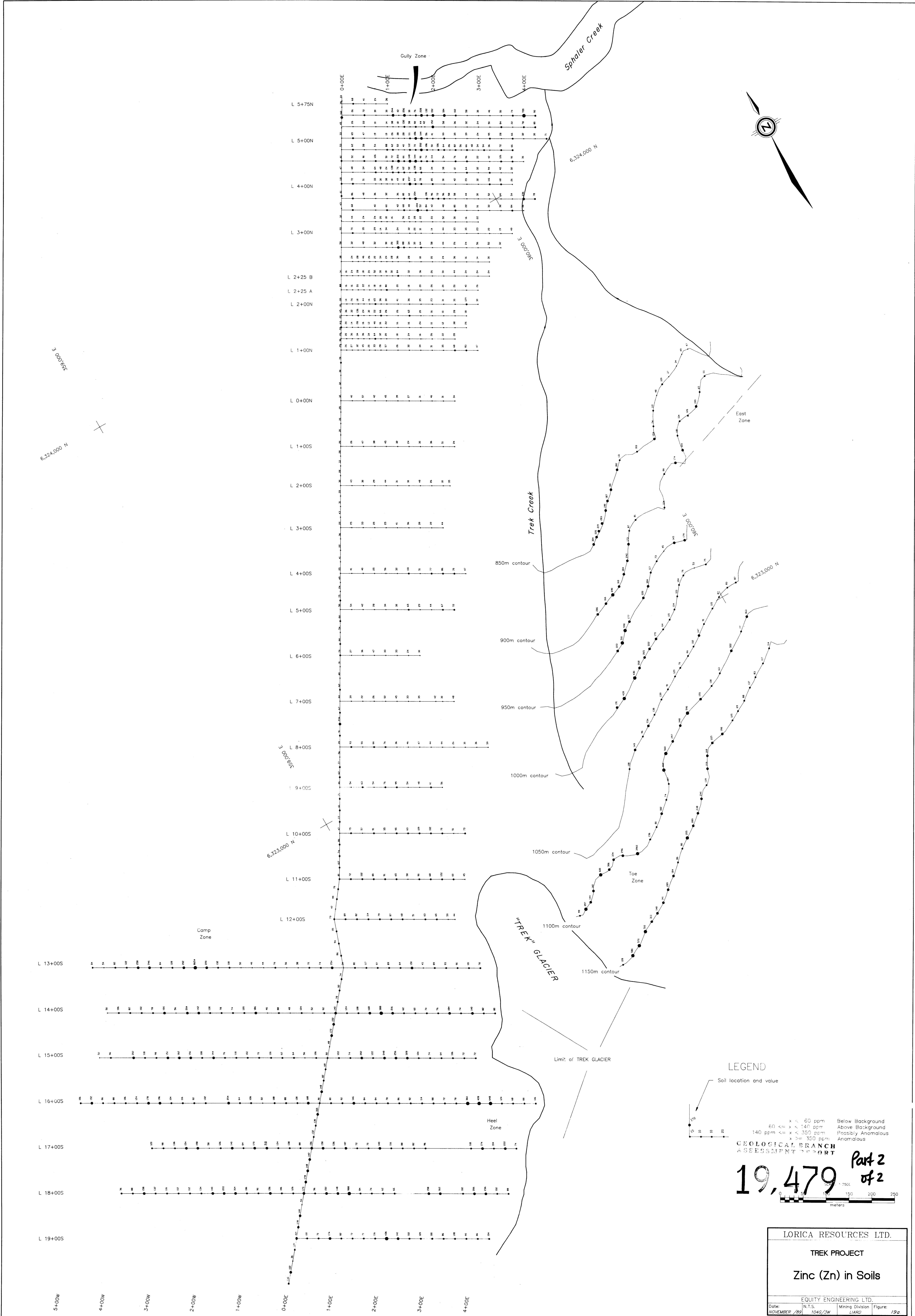


Part 2 of 2

LORICA RESOURCES LTD.	
TREK PROJECT	
Copper (Cu) in Soils	
EQUITY ENGINEERING LTD.	
Date: NOVEMBER /89	Figure: 17a
N.T.S. 1046/3W	Mining Division LIARD

5+00W 4+00W 3+00W 2+00W 1+00W 0+00E 1+00E 2+00E 3+00E 4+00E





**LEGEND**

Soil location and value

x < 60 ppm Below Background  
 60 ≤ x < 140 ppm Above Background  
 140 ppm ≤ x < 350 ppm Possibly Anomalous  
 x ≥ 350 ppm Anomalous

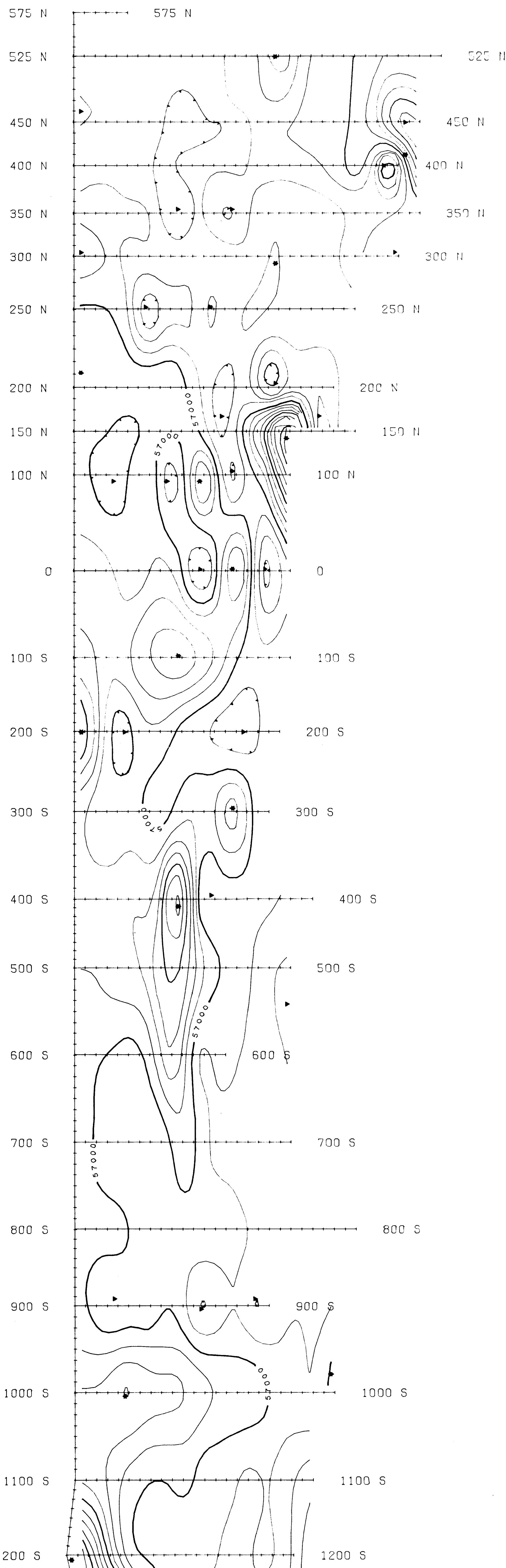
**19,479** Part 2 of 2

0 50 100 150 200 250  
 meters

LORICA RESOURCES LTD.  
 TREK PROJECT  
 Zinc (Zn) in Soils

EQUITY ENGINEERING LTD.  
 Date: NOVEMBER / 89 N.T.S. Mining Division Figure: 104G/3W LARD 19g  
 Prepared by: Equilibria DATA SERVICES LTD.

— 500 W — 400 W — 300 W — 200 W — 100 W — BASELINE — 100 E — 200 E — 300 E — 400 E — 500 E

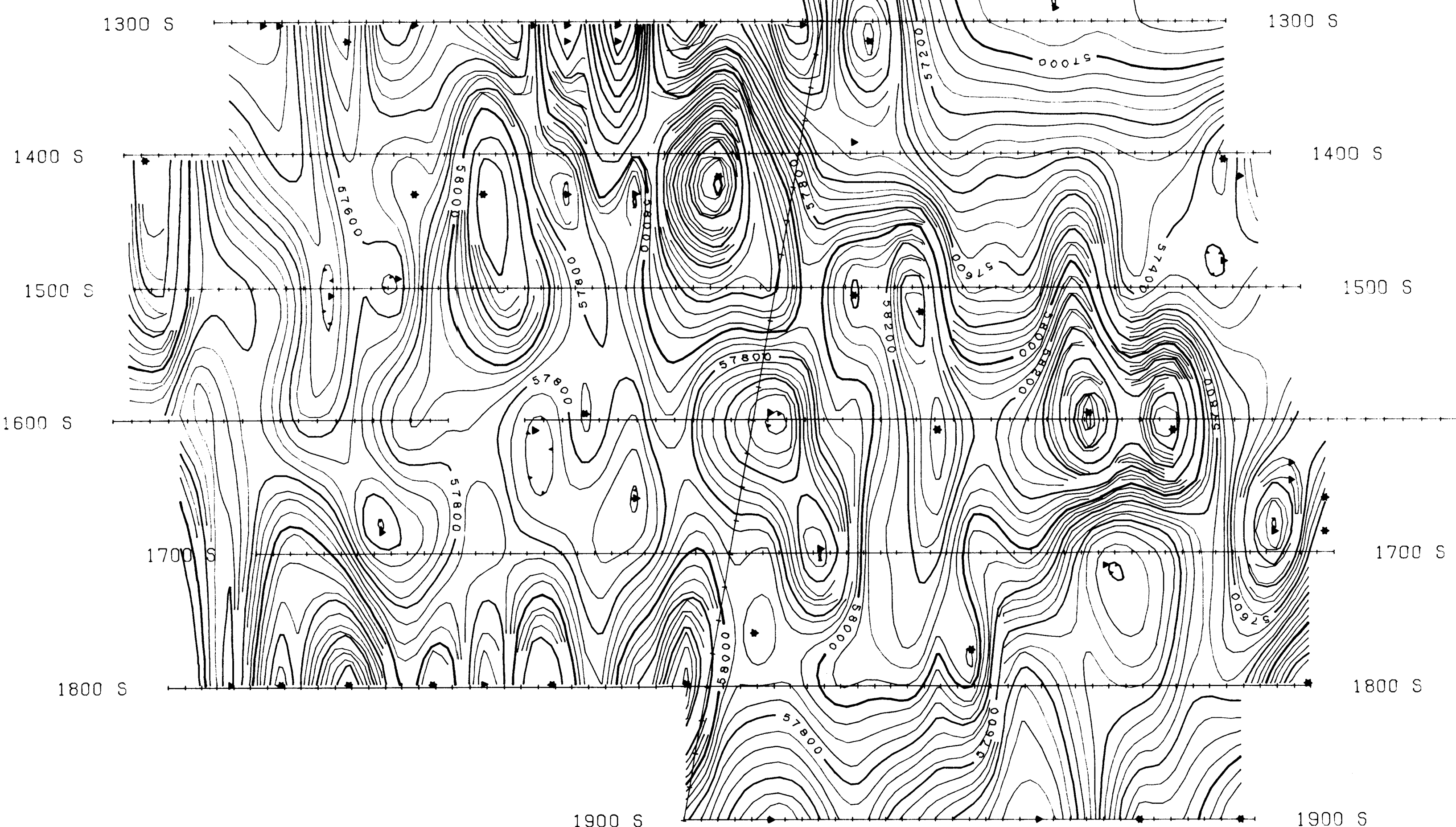
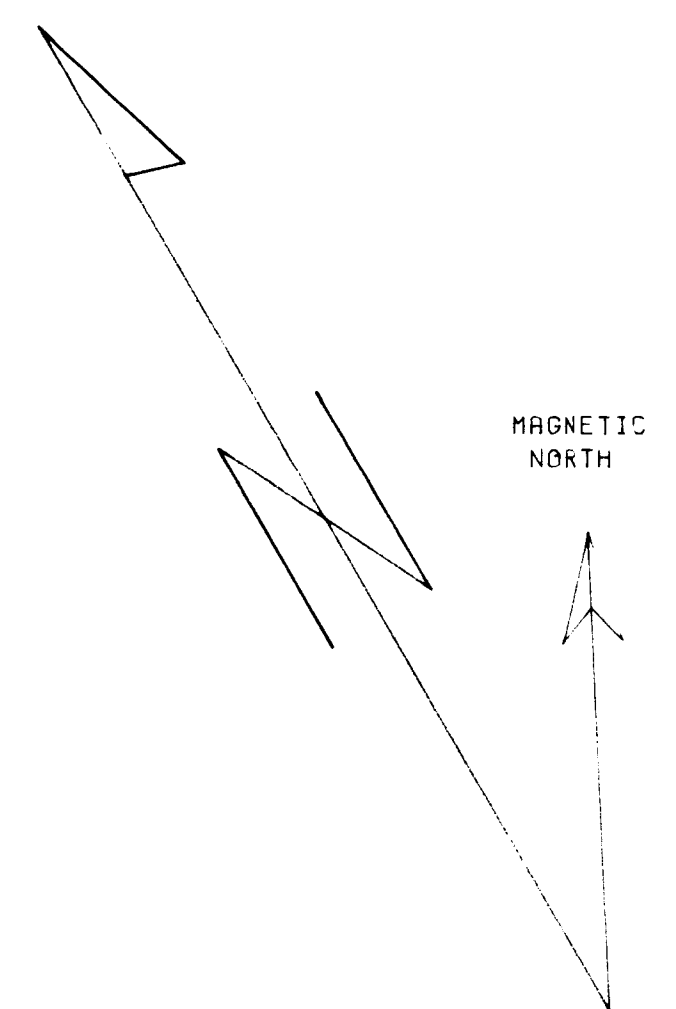


LEGEND

CONTOUR INTERVAL: 50 NT (GAMMAS)  
 POSTED CONTOUR INTERVAL: 250 NT  
 BASE VALUE = 57000 NT  
 ALL READINGS WITH SENSOR FACING  
 APPROXIMATELY MAGNETIC NORTH

INSTRUMENTATION:

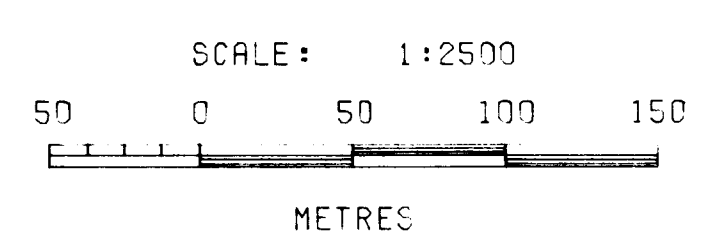
GEM SYSTEMS LTD.  
 MODEL GSM 8 PROTON PRECESSION  
 MAGNETOMETER  
 S/N: 63431

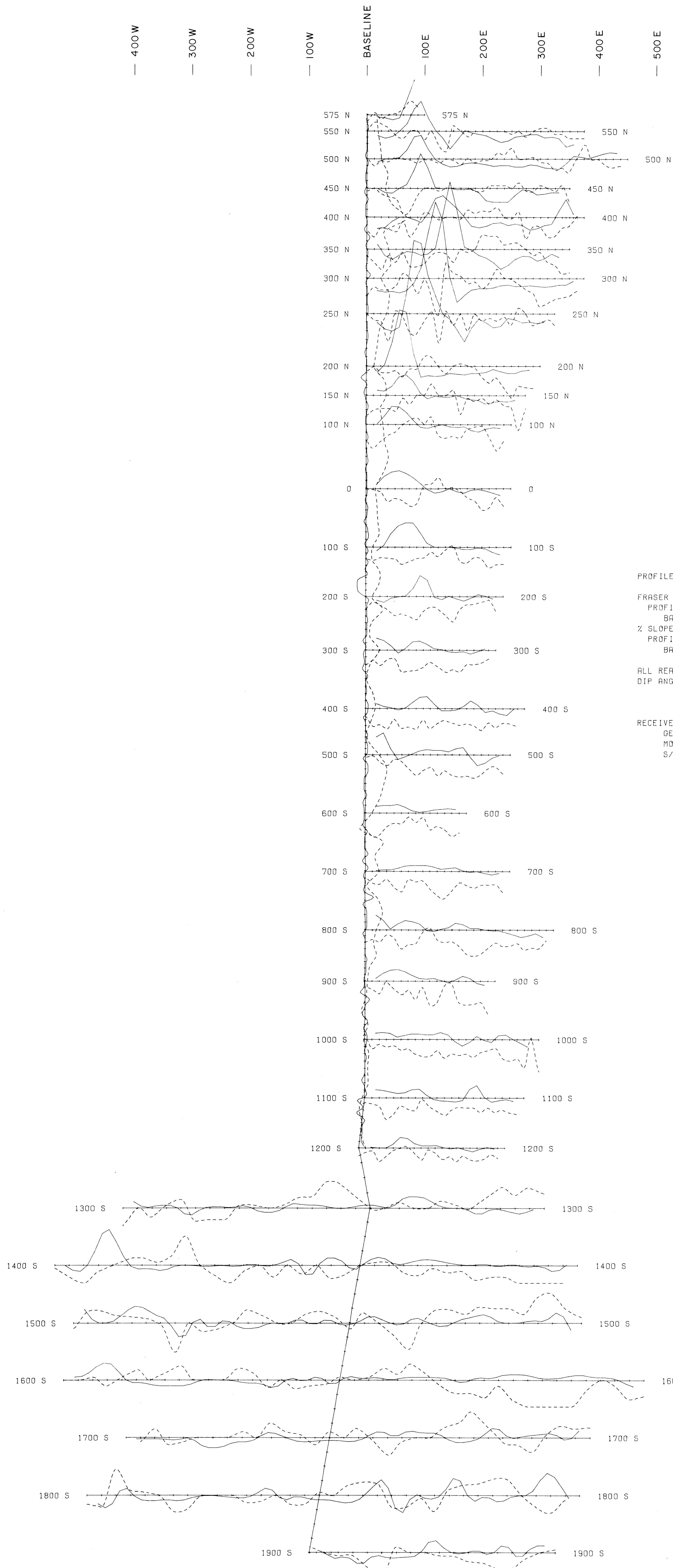


GEOLOGICAL BRANCH  
 ASSESSMENT REPORT

19,479  
 Part 2 of 2

PASS LAKE RESOURCES LTD.  
 TREK CLAIM  
 SPHALER CREEK AREA, LIARD R.D., B.C.  
 N.T.S. : 104 G/3  
 MAGNETOMETER SURVEY  
 TOTAL FIELD CONTOURS



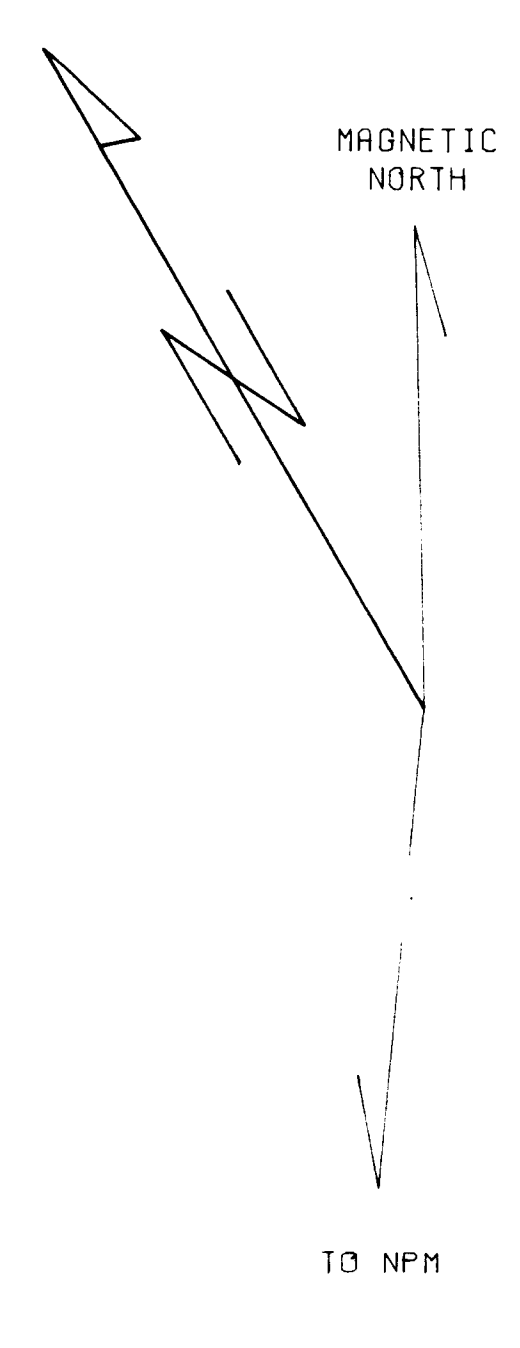


**LEGEND**

PROFILES POSITIVE UP AND TO RIGHT  
 FRASER FILTERED DIP ANGLE - SOLID LINE  
 PROFILE SCALE : 1 CM = 20 %  
 BASE VALUE : 0 %  
 % SLOPE (FORESIGHT) - DOTTED LINE  
 PROFILE SCALE : 1 CM = 50 %  
 BASE VALUE : 0 %

ALL READINGS FACING WEST OR NORTH  
 DIP ANGLE FRASER FILTERED EAST TO WEST

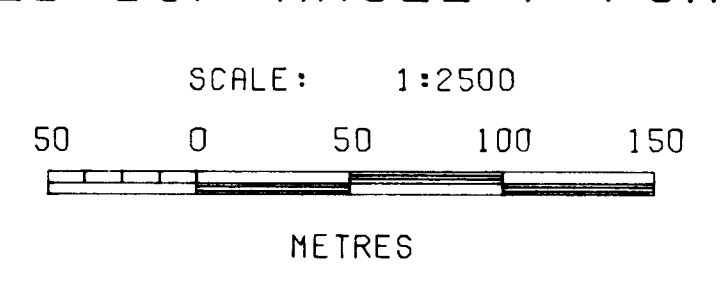
INSTRUMENTATION:  
 RECEIVER : GEONICS LTD. MODEL EM 16 S/N: 3347  
 TRANSMITTER : NPM - 23.4 KHZ LUALUALEI, OAHU, HAWAII



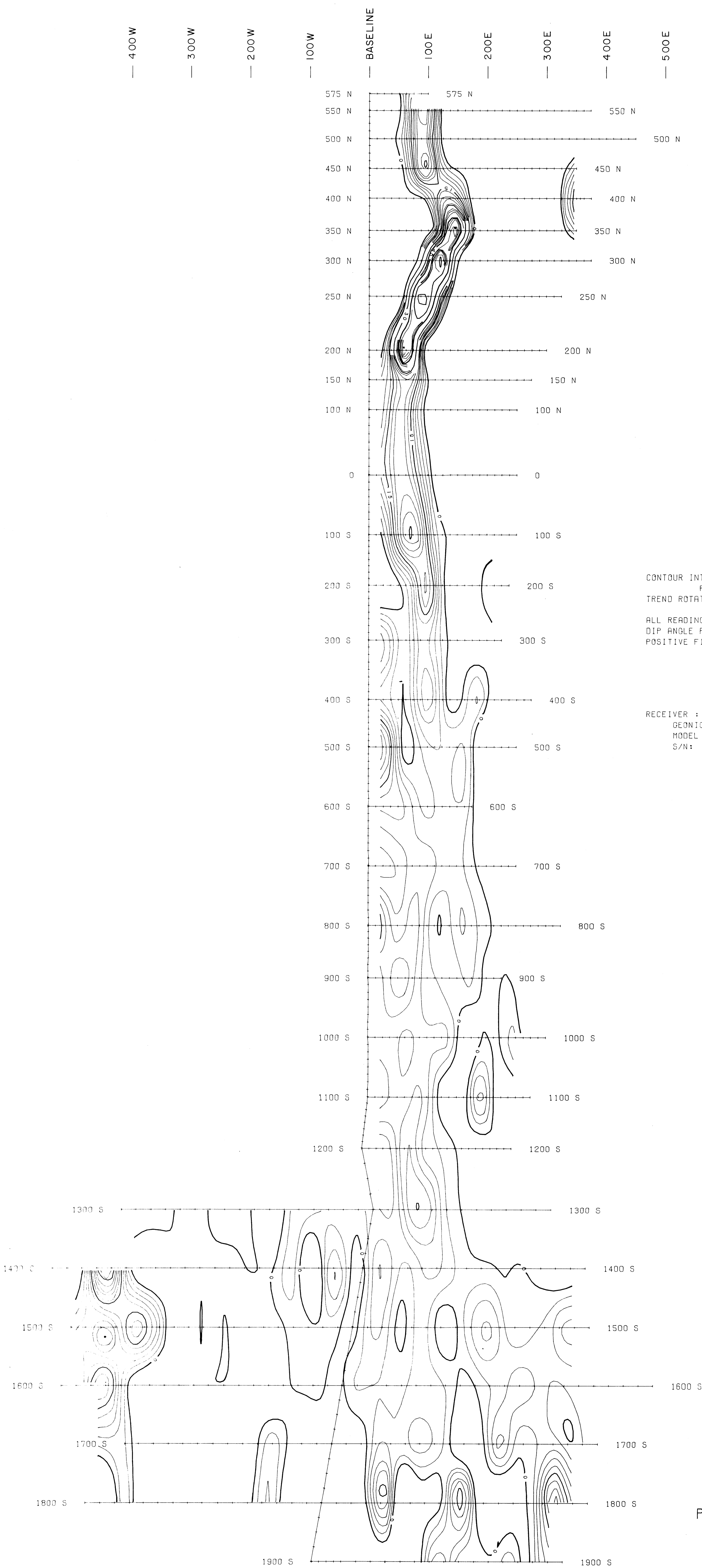
SPHALER CREEK BRANCH  
 LUALUALEI REPORT

**19,479**  
*Part 2 of 2*

PASS LAKE RESOURCES LTD.  
 TREK CLAIM  
 SPHALER CREEK AREA, LIARD M.D., B.C.  
 N.T.S. : 104 G/3  
 VLF-EM PROFILES - HAWAII  
 FILTERED DIP ANGLE / FORESIGHT







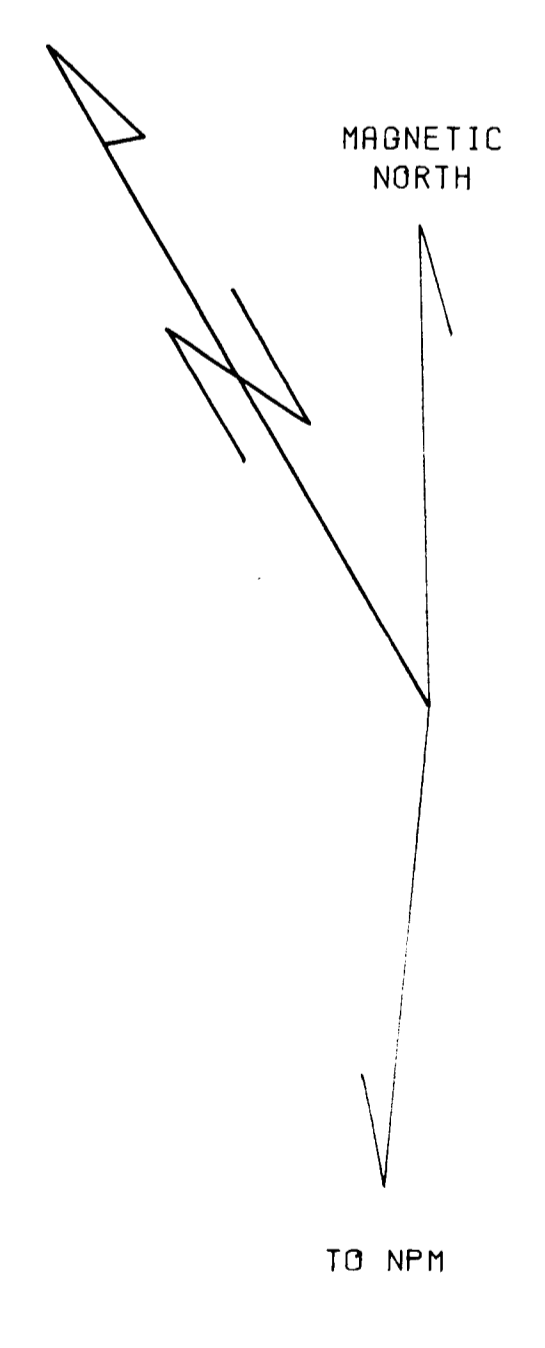
**LEGEND**

CONTOUR INTERVAL : 3 %  
 POSTED : 15 %  
 TREND ROTATION ANGLE : 0 DEGREES

ALL READINGS FACING WEST  
 DIP ANGLE FRASER FILTERED EAST TO WEST  
 POSITIVE FILTERED VALUES CONTOURED ONLY

**INSTRUMENTATION:**

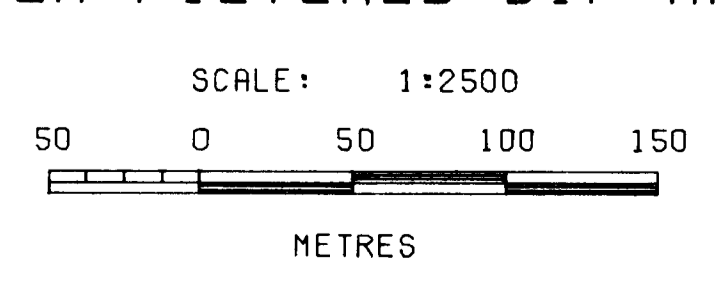
RECEIVER :	TRANSMITTER :
GEONICS LTD.	NPM - 23.4 KHZ
MODEL EM 16	LUALUALEI, OAHU, HAWAII
S/N: 3347	

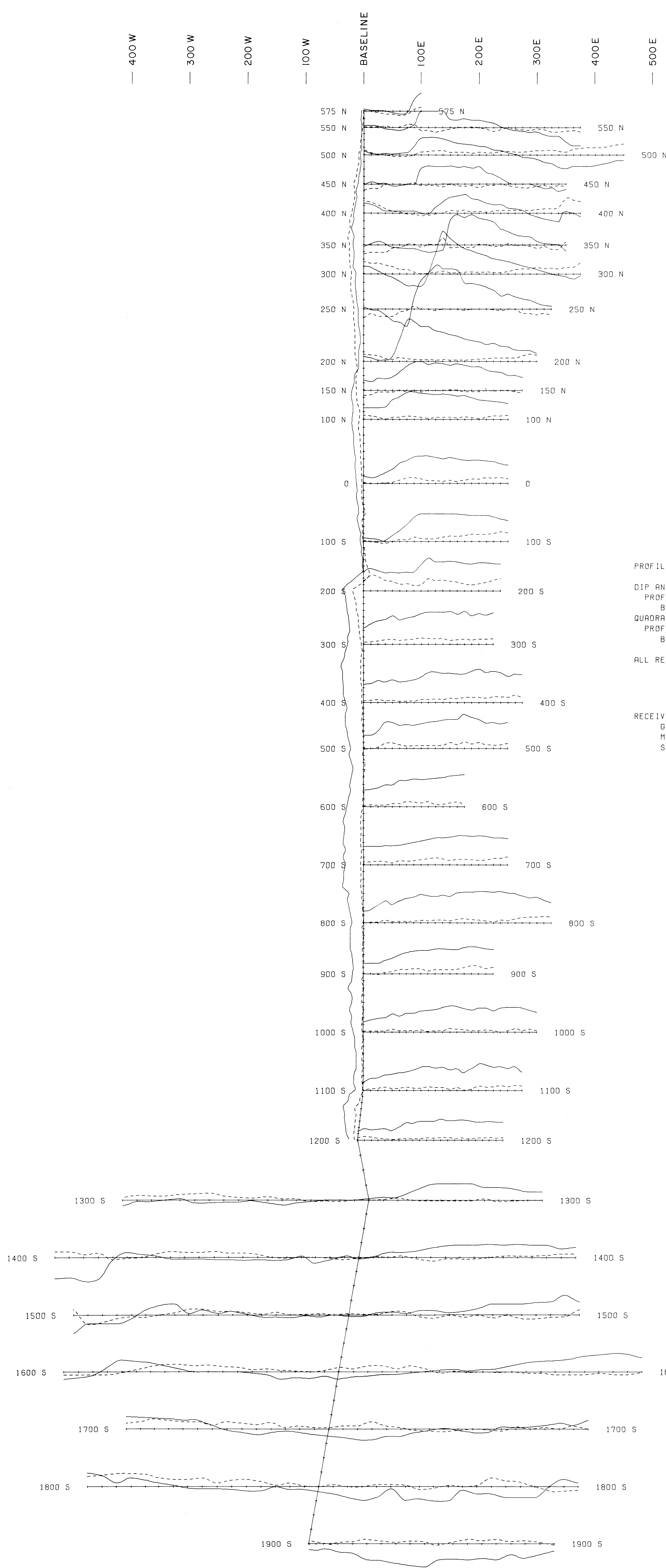


GEONICS BRANCH  
 7500 JESSIE AVENUE

**19,479**  
*Part 2 of 2*

PASS LAKE RESOURCES LTD.  
 TREK CLAIM  
 SPHALER CREEK AREA, LIARD M.D., B.C.  
 N.T.S. : 104 G/3  
 VLF-EM CONTOURS - HAWAII  
 FRASER FILTERED DIP ANGLE





**LEGEND**

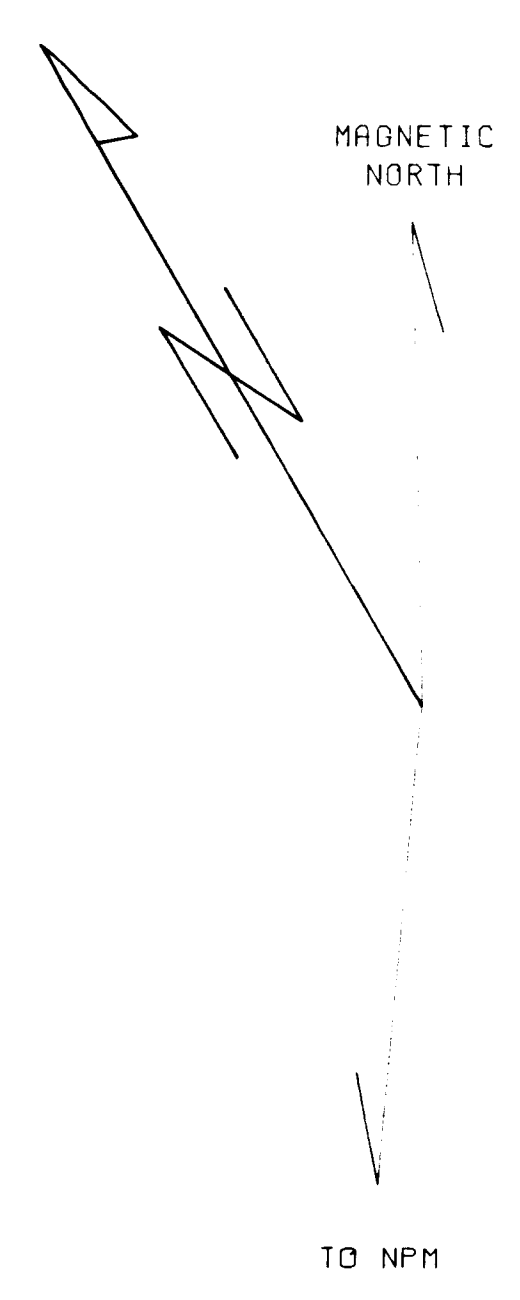
PROFILES POSITIVE UP AND TO LEFT

DIP ANGLE - SOLID LINE  
 PROFILE SCALE : 1 CM = 20 %  
 BASE VALUE : 0 %  
 QUADRATURE - DASHED LINE  
 PROFILE SCALE : 1 CM = 20 %  
 BASE VALUE : 0 %

ALL READINGS FACING WEST

**INSTRUMENTATION:**

RECEIVER : GEONICS LTD. MODEL EM 16 S/N: 3347  
 TRANSMITTER : NPM - 23.4 KHZ LUALUALEI, OAHU, HAWAII

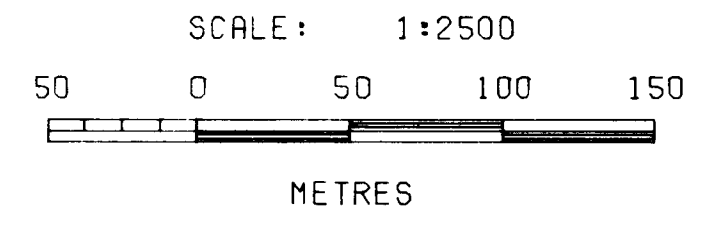


GEOLOGICAL BRANCH  
 ASSESSMENT REPORT

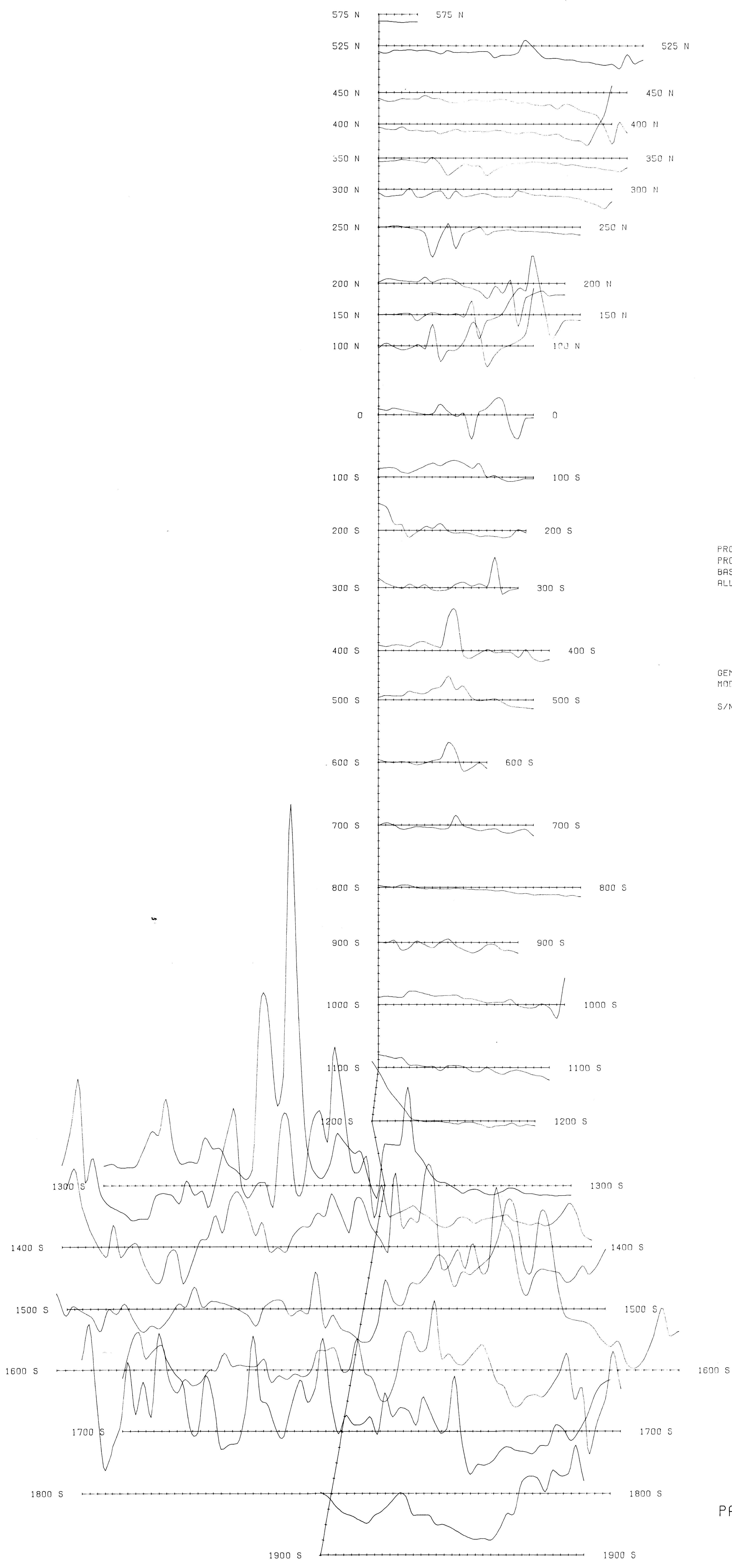
**19,479**

*Part 2 of 2*

PASS LAKE RESOURCES LTD.  
 TREK CLAIM  
 SPHALER CREEK AREA, LIARD M.D., B.C.  
 N.T.S. : 104 G/3  
 VLF-EM PROFILES - HAWAII  
 DIP ANGLE / QUADRATURE



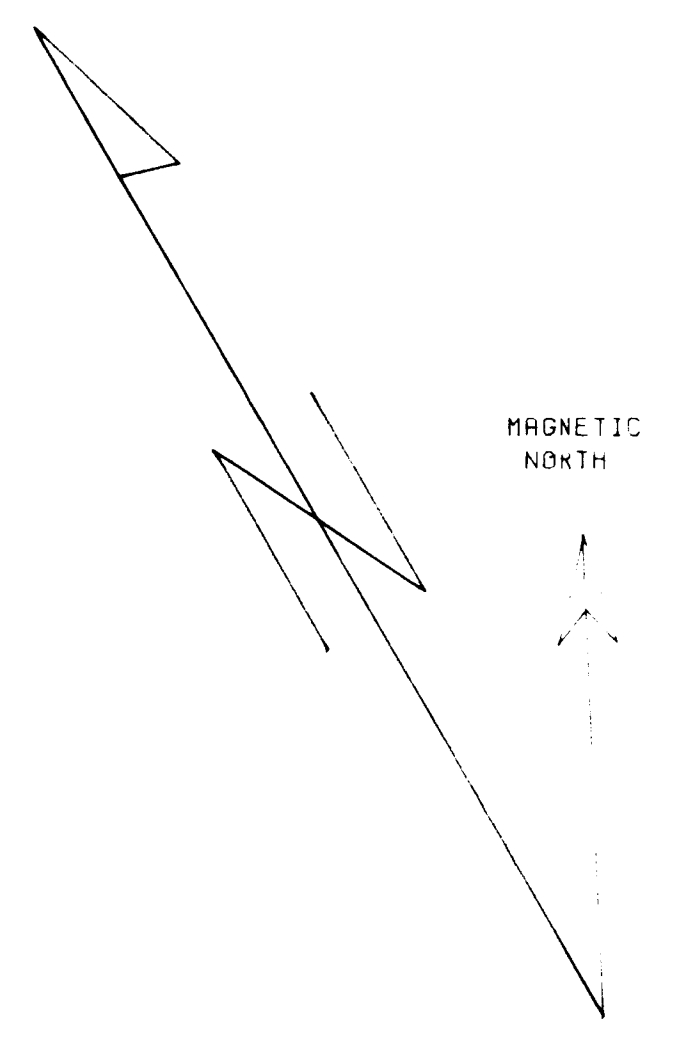
400 W    300 W    200 W    100 W    BASELINE    100 E    200 E    300 E    400 E    500 E



LEGEND

PROFILES POSITIVE UP AND TO THE LEFT  
 PROFILE SCALE: 1 CM = 200 NT (GAMMAS)  
 BASE VALUE : 57,000 NT  
 ALL READINGS WITH SENSOR FACING  
 APPROXIMATELY MAGNETIC NORTH

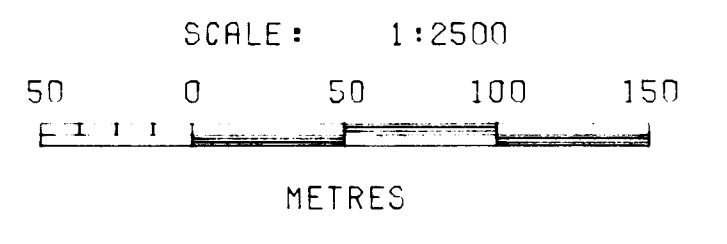
INSTRUMENTATION:  
 GEM SYSTEMS LTD.  
 MODEL GSM 8 PROTON PRECESSION  
 MAGNETOMETER  
 S/N: 83431

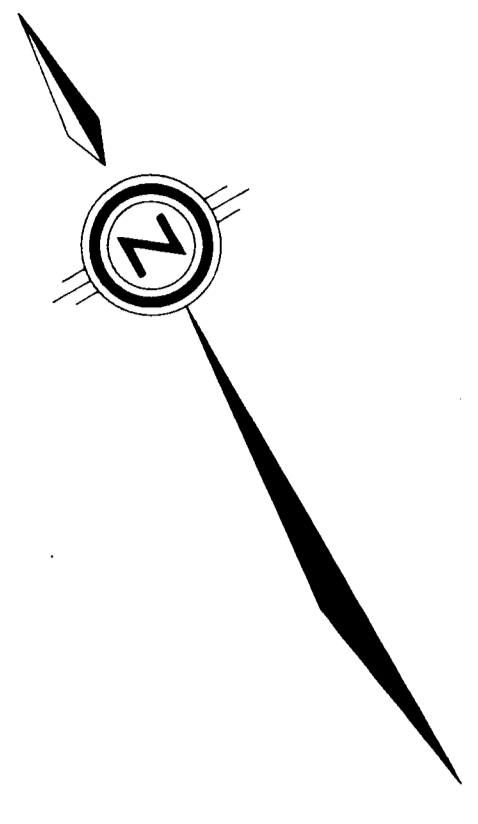
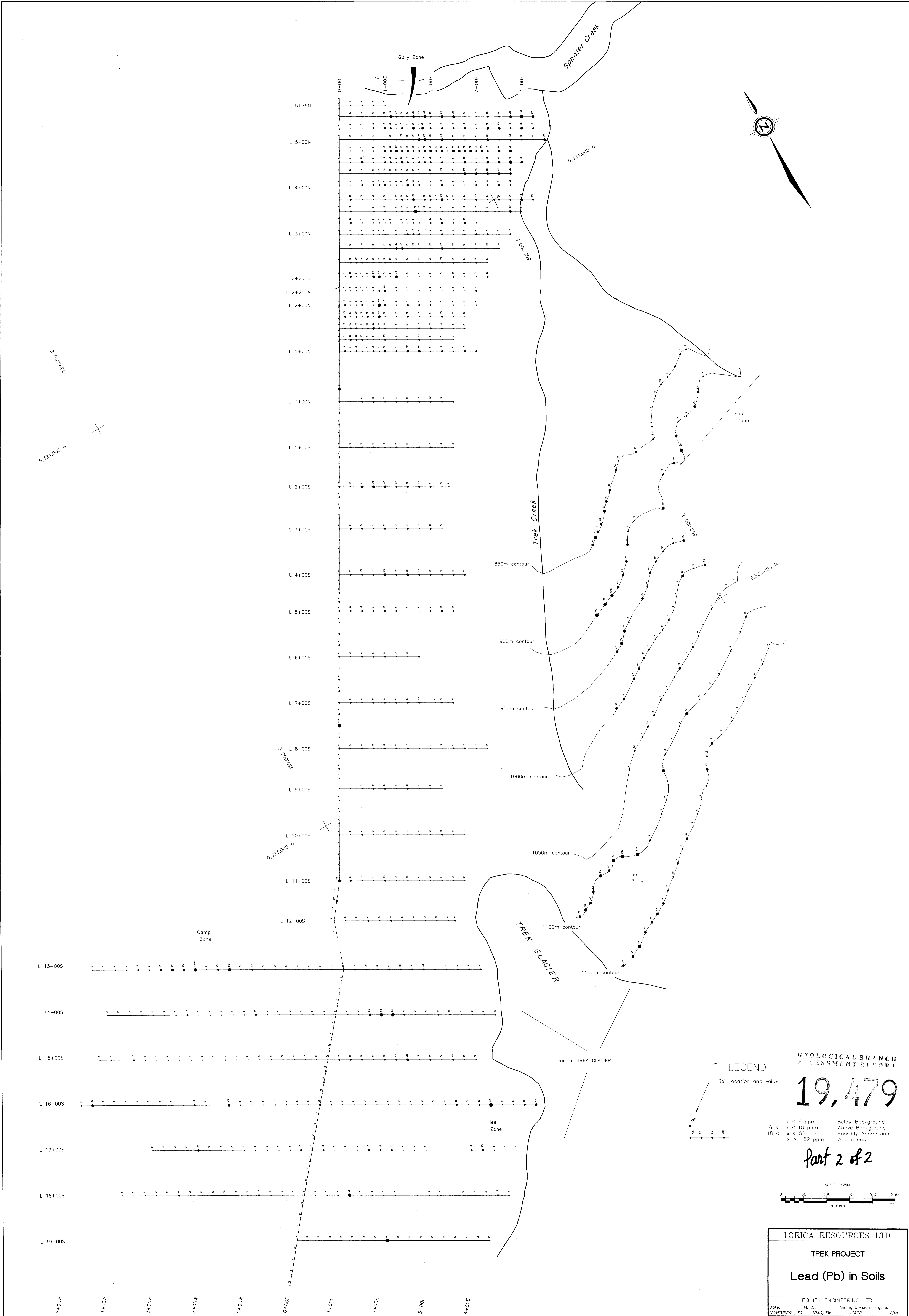


GEOLOGICAL BRANCH  
 ASSESSMENT REPORT

19,479  
 Part 2 of 2

PASS LAKE RESOURCES LTD.  
 TREK CLAIM  
 SPHALER CREEK AREA, LIARD M.D., B.C.  
 N.T.S. : 104 G/3  
 MAGNETOMETER SURVEY  
 TOTAL FIELD PROFILES





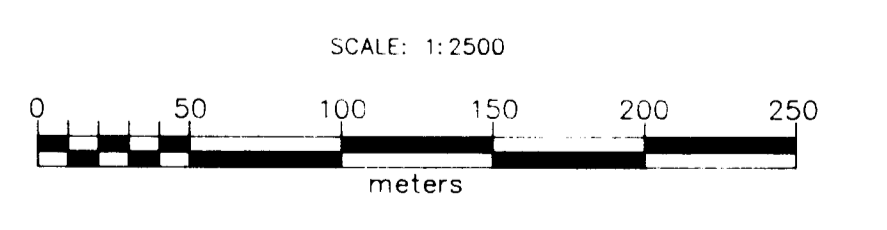
**GEOLOGICAL BRANCH  
ASSESSMENT REPORT**

**19,479**

**LEGEND**  
Soil location and value

x < 6 ppm	Below Background
6 ≤ x < 18 ppm	Above Background
18 ≤ x < 52 ppm	Possibly Anomalous
x ≥ 52 ppm	Anomalous

*Part 2 of 2*



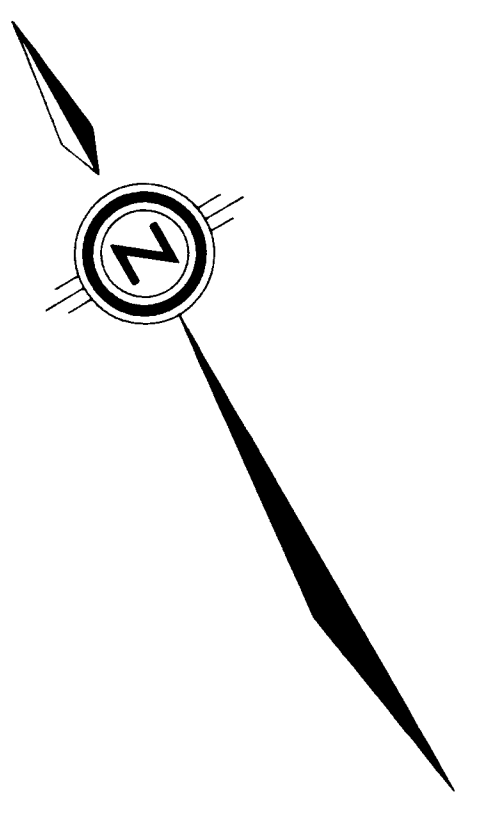
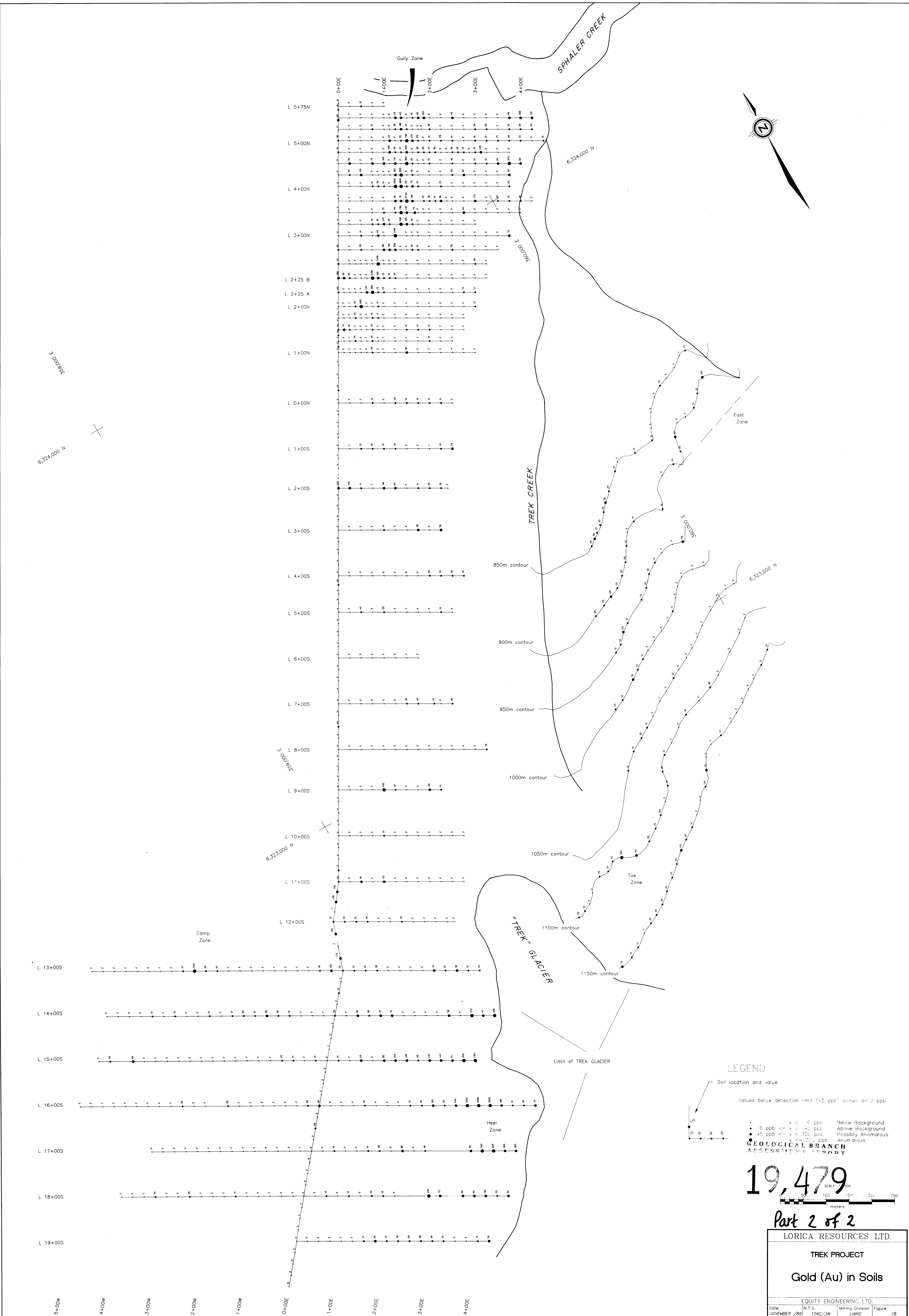
**LORICA RESOURCES LTD.**

**TREK PROJECT**

**Lead (Pb) in Soils**

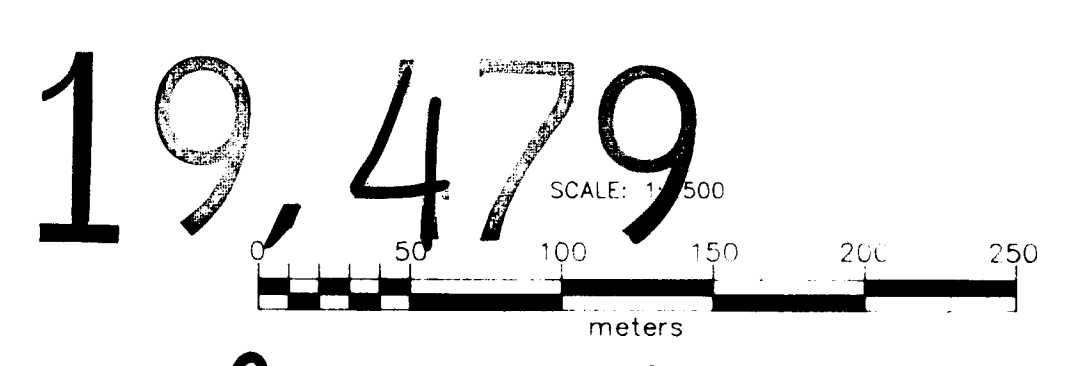
EQUITY ENGINEERING LTD.  
Date: NOVEMBER /82 N.T.S. Mining Division Figure: 18a  
104G/3W (1480) Prepared by: CAWBY DATA SERVICES LTD.





**LEGEND**

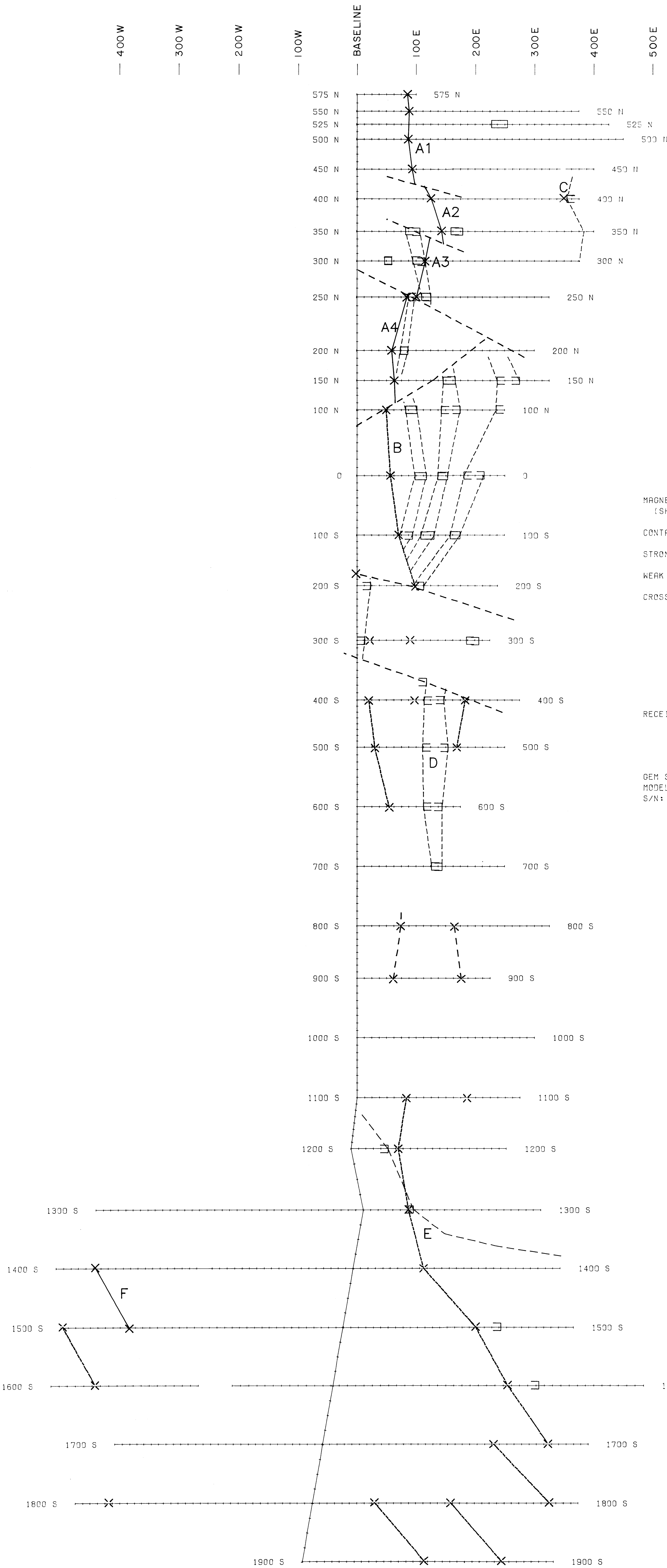
- Soil location and value
- Values below detection limit (<5 ppt) shown as 2 ppt
- x < 6 ppt Below Background
  - 6 ppt <= x < 40 ppt Above Background
  - 45 ppt <= x < 320 ppt Possibly Anomalous
  - x <= 320 ppt Anomalous
- GEOLOGICAL BRANCH**  
ASSESSMENT REPORT



Part 2 of 2

<b>LORICA RESOURCES LTD.</b>			
<b>TREK PROJECT</b>			
<b>Gold (Au) in Soils</b>			
<small>EQUITY ENGINEERING LTD.</small>			
<small>Date:</small>	<small>N.T.S.</small>	<small>Mining Division</small>	<small>Figure:</small>
<small>13 NOVEMBER /89</small>	<small>104G/3W</small>	<small>LARD</small>	<small>15</small>
<small>Prepared by: C. M. D. &amp; A. S. &amp; S. LTD.</small>			





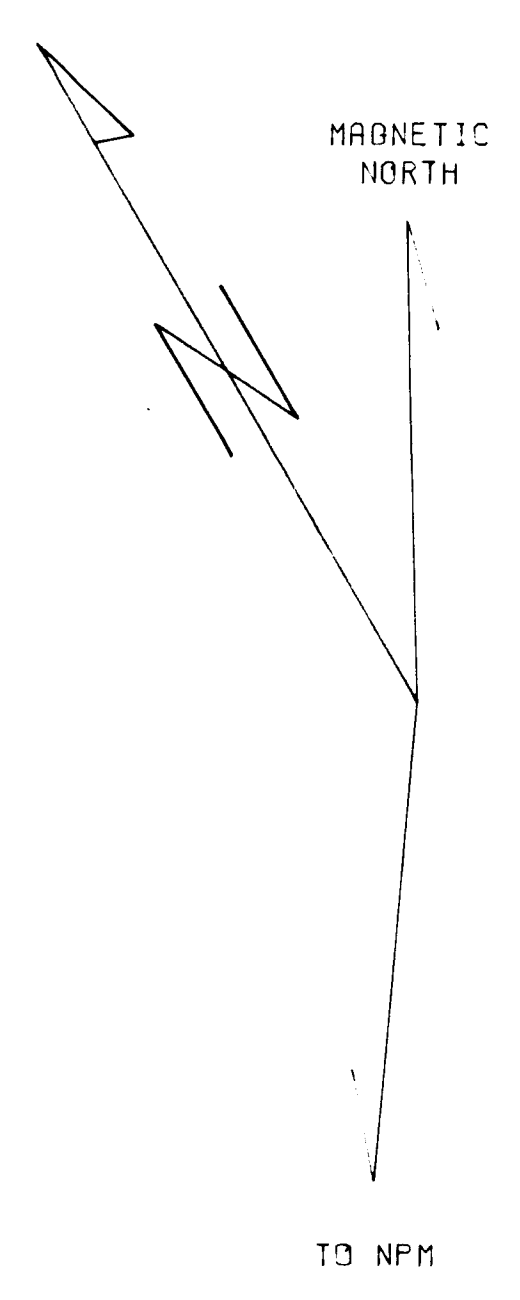
LEGEND

- MAGNETICS ANOMALY (SHOWING WIDTH)
- CONTACT
- STRONG VLF-EM CONDUCTOR ✕
- WEAK VLF-EM ANOMALY ✕
- CROSS STRUCTURE

INSTRUMENTATION:

RECEIVER : GEONICS LTD. MODEL EM 15 S/N: 3347  
 TRANSMITTER : NPM - 23.4 KHZ LUALUALEI, OAHU, HAWAII

GEM SYSTEMS LTD. MODEL GSM 8 PROTON PRECESSION MAGNETOMETER S/N: 83431



GEOLOGICAL BRANCH ASSESSMENT REPORT

**19,479**  
*Part 2 of 2*

PASS LAKE RESOURCES LTD.  
 TREK CLAIM  
 SPHALER CREEK AREA, LIARD M.D., B.C.  
 N.T.S. : 1:2500  
 COMPILATION MAP  
 MAGNETICS AND VLF-EM SURVEYS

