

WM. HOWARD MYERS, P.Eng. (B.C.), P.Geol. (Alta)
Geological - Geophysical Consultant
814 - 602 West Hastings Street

SUB-RECORDER
RECEIVED
DEC 29 1989
M.R. # _____ \$ _____
VANCOUVER, B.C.

Vancouver, B.C.
V6B 1P3
Tel: (604) 669-7818

LOG NO: 0104 RD.
ACTION:
FILE NO:

SUMMARY REPORT AND LOG OF DIAMOND DRILL HOLE
ON THE
PC487 (PL1050) PLACER CLAIM
QUESNEL AREA, CARIBOO MINING DIVISION, B.C.
JANUARY 18TH THROUGH JANUARY 24TH, 1989

Longitude 122° 37' West
Latitude 53° 06' 30" North
N.T.S. 93G/2E

LOG NO: 0703 RD. 2
ACTION: Date received
back from amendm
FILE NO:

FOR
ALL STAR RESOURCES LTD.
615 -200 Granville Street
Vancouver, B.C.
V6C 1S4

May, 1989

GEOLOGICAL BRANCH
ASSESSMENT REPORT

19,495

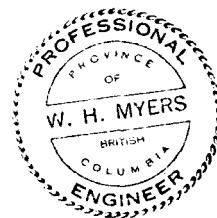
TABLE OF CONTENTS

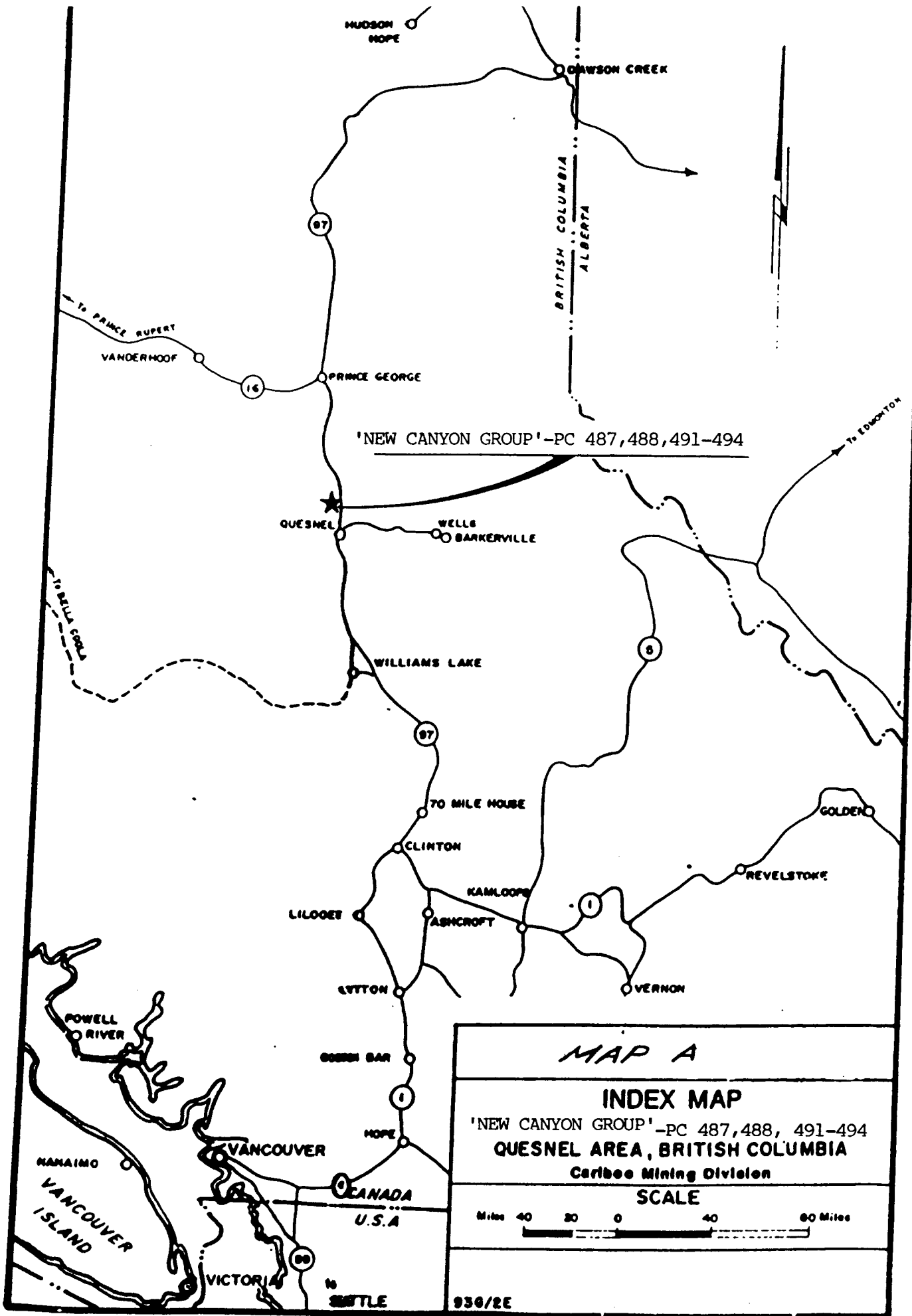
	<u>Page</u>
1. Summary of Diamond Drilling	1 /
2. Log of Drill Hole	2 /
3. Cost Statement	3 /
4. Author's Qualifications	4 /
5. Bibliography	5 /
6. Maps & Plans	
A. Index Map	following page 1 /
B. Geological -Claim-Location Map	in pocket /

WM. HOWARD MYERS, P.Eng. (B.C.), P.Geol. (Alta)
Geological - Geophysical Consultant
814 - 602 West Hastings Street
Vancouver, B.C.
V6B 1P3
Tel: (604) 669-7818

SUMMARY OF RESULTS OF THE DIAMOND DRILLING
OF THE
AURIFEROUS CEMENTED GRAVELS IN THE CANYON MINE AREA

During the diamond drilling of the VLF-EM Anomaly on the Can #5 to #9 Mineral Claims in the area of the Canyon underground placer mine, it was recommended that a test hole be drilled to see if the auriferous cemented gravels of the tertiary channel could be cored with a diamond drill. The test was approved and the drill contractor (Herb Allen Diamond Drilling of Merritt, B.C.) was authorized to mobilize the necessary special equipment to try and core the gravels above bedrock. The test hole was located some 75 metres south of the Canyon Mine portal immediately west of the underground adit on Placer Claim #487. The test hole failed to encounter the gravels and bedrock was encountered some 52 feet below the surface. Steep terrain prevented the hole being moved further east closer to the channel. The hole completed on January 21st, 1989 to a total depth of 123 feet in normal bedrock of broken argillite. The hole was logged by the writer on January 23rd, 1989. The log of the hole is enclosed with this summary of the drilling.





LOG OF DIAMOND DRILL HOLE #11-A-88

Location: 150 metres east of DDH #6,
75 metres south of Canyon Mine adit
Cariboo Mining Division
NTS 93G-2E, Enclosed Geological Claim Map

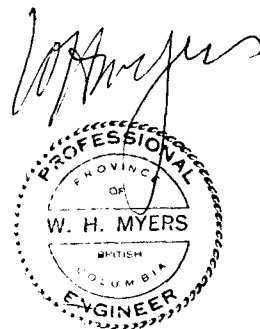
Dip & Direction: vertical

Date Drilled: January 20 - 21, 1989

Depth: 123 feet (1 ft. = 0.305 m)

Logged by: Wm. Howard Myers, P.Eng., January 18 to 24, 1989

<u>Depth</u>	<u>Description</u>
0' - 52'	Casing, overburden sand gravel conglomerate (tried to core conglomerate).
52' - 57'	Grey to brown broken oxidized leached argillite with abundant iron oxide stain, some fault gouge.
57' - 62'	Light grey broken argillite with local severe brecciation, some fractures with iron oxide stain.
62' - 77'	Light grey broken argillite local breccia zones and some black argillite and graphite along foliation fault gouge at 71 no pyrite, no samples for assay.
77' - 123' TD	Dark grey to black banded broken argillite. Hole cutting foliation at right angles. Some pyrite near -85 feet. Very dense black rock 101-102 and near 112 little or no pyrite. No samples for assay.



COST STATEMENT

-Mobilizing of "HQ" special drilling equipment & "HQ" bit Diamond Drilling to obtain core of placer gravels -123 ft. drilled	\$4,190
-Drill Site preparation (D6 Cat x 2 hours)	120
-Supervision -core logging & report	400
-Evaporate pit and cleaned drill site	30
	<hr/>
	\$4,740
	=====

CERTIFICATE

I, William Howard Myers, do hereby certify that I am an independent geological-geophysical consultant with offices at Suite #814 - 602 West Hastings Street, Vancouver, B.C., V6B 1P3, British Columbia. I have been actively engaged in my profession as an independent consultant in both oil and mining since 1952. I am a professional geologist, P.Geol., member #16704 of the Association of Professional Engineers, Geologists and Geophysicists of Alberta. I am also a member P.Eng., #14056, of the Professional Engineers of British Columbia. I also hold a Life Membership in both Societies.

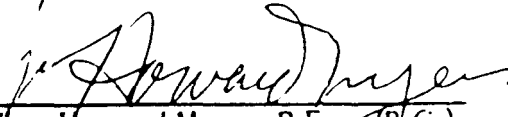
I graduated from Fresno State College, Fresno, California in 1939 with high honors and a B.Sc. degree in Geology. I did graduate work at Stanford University, Stanford California for M.Sc. degree in Geology, 1939-1941. After graduating I spent three years as a field geologist for the U.S. Geological Survey and eleven years working in the field and management of a company engaged in geophysical exploration work for both oil and minerals.

During the past 25 years, I have spent the majority of my time in the exploration for both placer and lode gold in the Cariboo Area of British Columbia. In the past five years, I have carried out extensive geophysical surveys and research programmes for gold exploration in the Cariboo Area of British Columbia. Much of the work involved the techniques recommended by R.W. Boyle in Bulletin 280 of the Geological Survey of Canada.

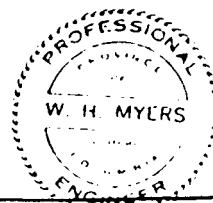
During the period July, 1988 through January 1989, I carried out VLF-Electromagnetic surveys, shallow refraction seismic surveys, geological field mapping, laid out and supervised the diamond drill programme on the CAN #5-#9 claim block located on the southwest side of the Fraser River some 23 kilometres northwest of the town of Quesnel, B.C. in the Cariboo Mining Division. The said work is the subject of the enclosed report.

The published maps and reports used in the preparation of the report are tabulated in the Appendix of the report.

I further certify that I have no direct or indirect interest in the properties or the securities of All Star Resources Ltd. and do not expect to receive any direct or indirect interest in the property or securities to be issued by the Company.


Wm. Howard Myers, P.Eng. (B.C.)
P.Geol. (Alta)
Geological-Geophysical Consultant
Vancouver, B.C.

March, 1989



BIBLIOGRAPHY

B.C. Minister of Mines Annual Reports

1918	131-132, 138-139
1919	129
1924	124-125, 148
1926	171-173
1932	106
1933	126-127
1934	27-28
1936	40

B.C.D.M.

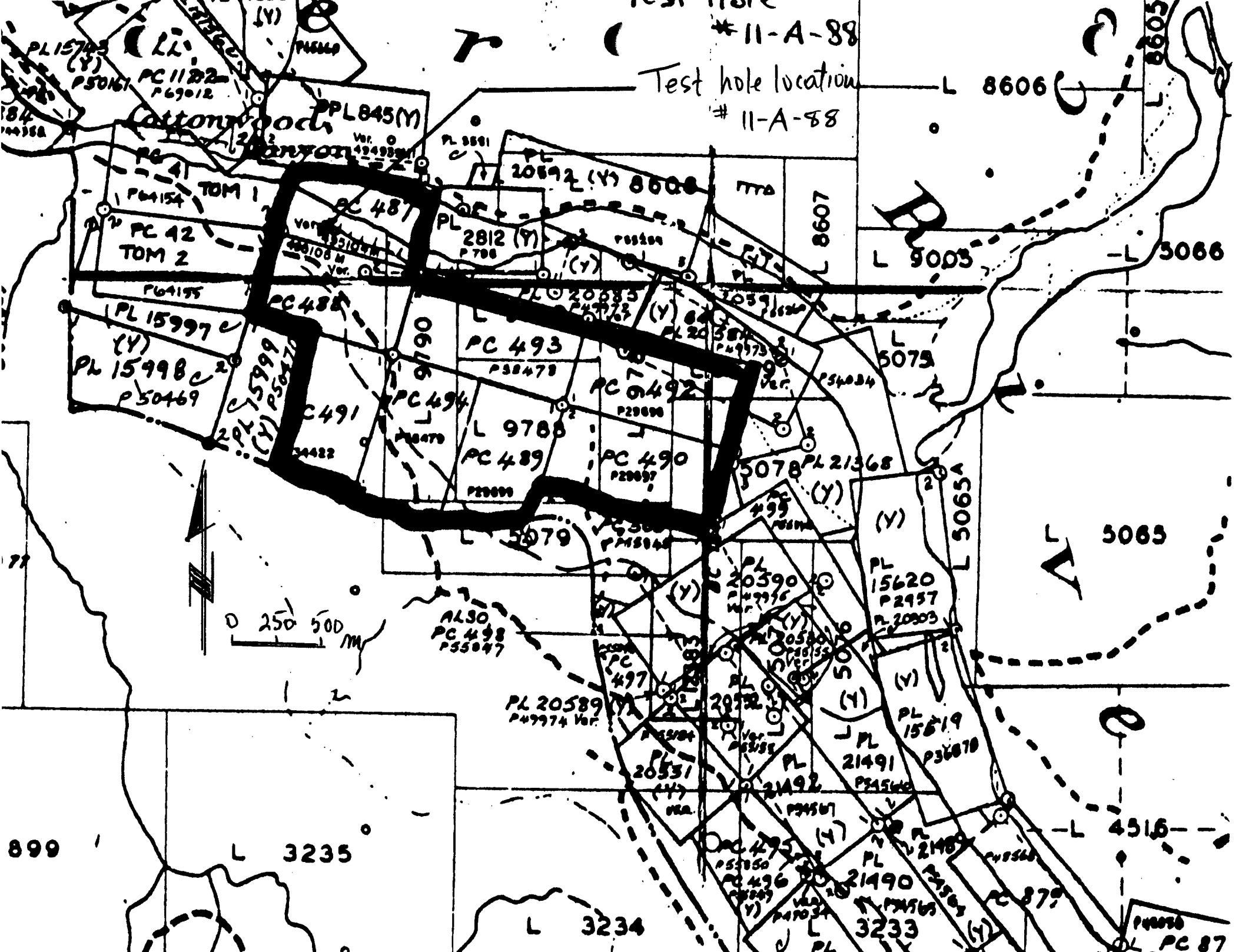
Fraser River Tertiary Drainage - History in Relation to Placer Gold Deposits
Douglas Lay Bulletin, No. 3, 1940
Douglas Lay Bulletin, No. 11, 1941

Geological Survey of Canada

Map 3, 1969, Preliminary Series
Map 12, 1959, Quesnel Preliminary Series
Map 1424A, Parsnip River
Tipper, Campbell, Taylor Stott, 1979
Map 1547G and 1548G, Sheet 93G/7
Aeromagnetic Series
Map 49 - 1969 - Tipper
L.C. Struik, 1984 Paper 84-18, Part A
Tipper, H.W. Bulletin, 196, 1971
Tipper, H.W., Paper 1A, 67-68

Unpublished Report:

Geological - Geophysical Report on the Results of the 1988 Exploration Work on CAN 5-9 Mineral Claims with Recommendations and Cost Estimates for Future Work for All Star Resources Ltd., Vancouver, B.C., Wm. Howard Myers, P.Eng., P.Geol., Consultant, March, 1989.- Assessment Report #18811



11-A-88

Test hole location

11-A-88

Cottonwood Canyon

PPL845(M)

L 8606

L 8605

L 5066

L 9003

L 8607

L 5079

L 5065

L 5065A

0 250 500 m

ALSO
PC 498
P55047

PL 20589
P49774 Ver.

PL 20590
P49795

PL 15620
P2957
P20903

PL 15619
P36878

PL 21491
P34540

PL 20531
(Y)

PL 20530
P49795

PL 21492
P34540

PL 21489
P34540

PL 21490
P34540

PL 3233

L 4516

L 3235

L 3234

899

PL 879
PC 87

GEOLOGICAL BRANCH
ASSESSMENT REPORT

19,495

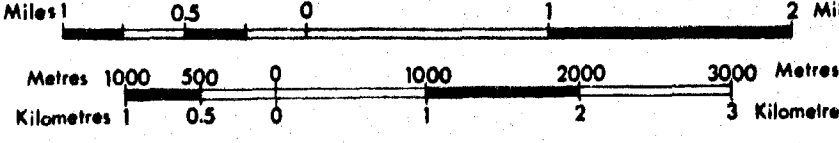
P 93

Province of British Columbia
Ministry of Energy, Mines and Petroleum Resources

LEGEND

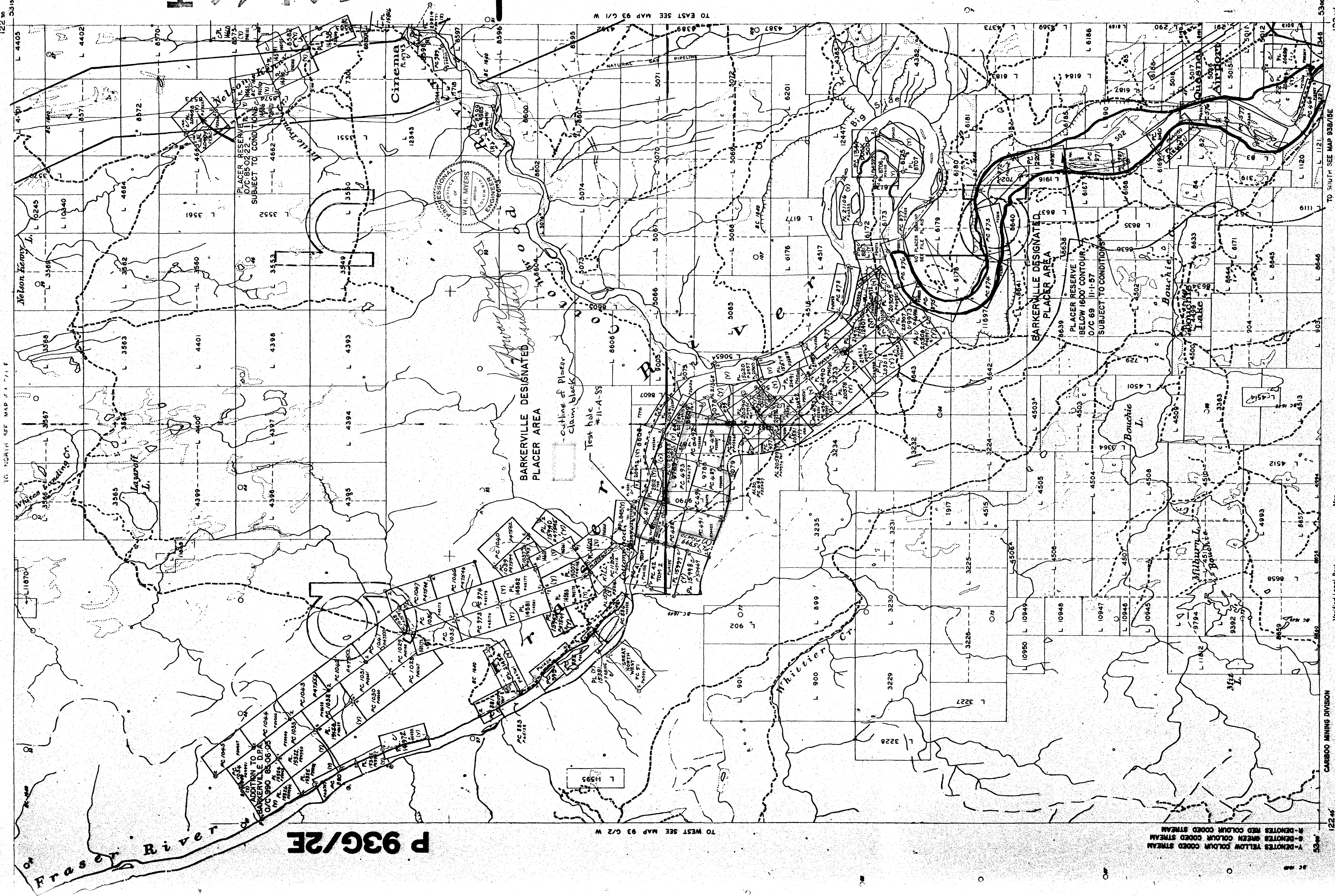
CROWN GRANTED MINERAL CLAIM
REVERTED C.G. MINERAL CLAIM
FORFEITED MINERAL CLAIM
VERIFIED LEGAL CORNER POST
LEGAL SURVEY
LEGAL CORNER POST & TAG NUMBER @ 12345

C.G.
Rev. C.G.
Ver.
Sur.



UNLESS VERIFIED OR SURVEYED, THE MAP POSITION OF A
LEGAL CORNER POST IS BASED ON THE LOCATOR'S SKETCH.
FOR FURTHER INFORMATION, APPLY TO THE OFFICE OF THE
MINING DIVISION CONCERNED.

DATE OF MICROFILM: 89 JUL 28



122 36

TO NORTH SEE MAP 93 G/1 F

122 36

53 36

TO SOUTH SEE MAP 93B/95E

53 36

PLACER TITLES REFERENCE MAP 93G/2E
DEPARTMENT OF MINES AND PETROLEUM RESOURCES VICTORIA B.C.
 This map is prepared only as a guide to the location of Placer Mining Leases. Positions of Placer Mining Leases are not surveyed. Where geographic positions of legal posts have been verified they are indicated with the symbol Ver. For further information, application should be made to the office of the Chief Gold Commissioner.

CARBOO MINING DIVISION

Ver. Verified Legal Post
 Stream... **NO PLACER STAKING**
 perennal
 indefinite
 intermittent, dry
 Boundary... swamp, flat, snow
 Height of Land
 Pipeline
 Power Transmission Line
 Flight Numbers

MINING DIVISION

Mining Division Boundary
 Indian Reservation
 Mineral and Placer Reserve
 Biological Reserve
 Park Boundary
 Recreation Area Boundary
 Railway
 Highway
 Public Road
 Trail

Y-DENOTES YELLOW COLORED STREAM
 G-DENOTES GREEN COLORED STREAM
 R-DENOTES RED COLORED STREAM

OF 82/23 O5