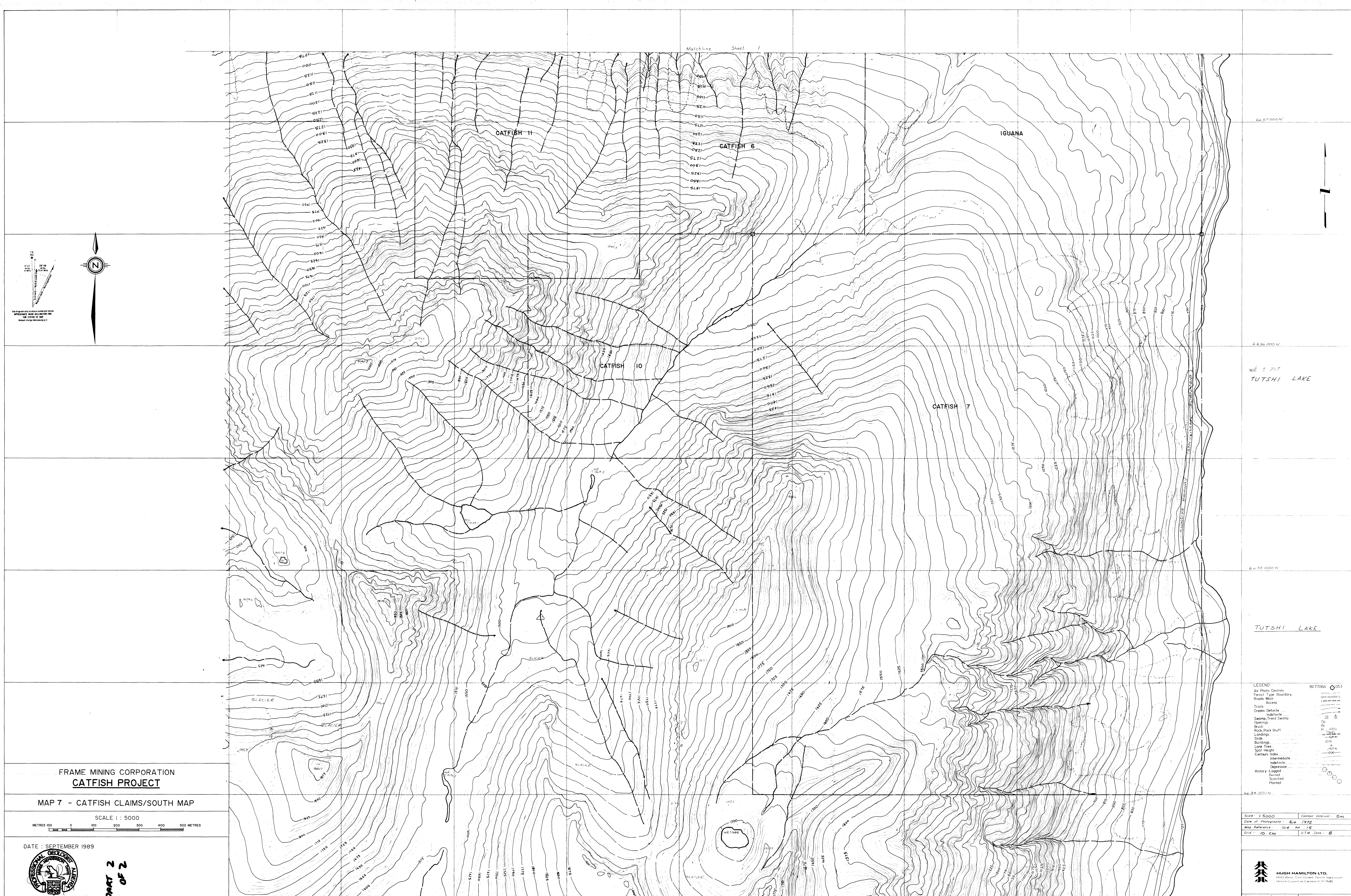


19 527

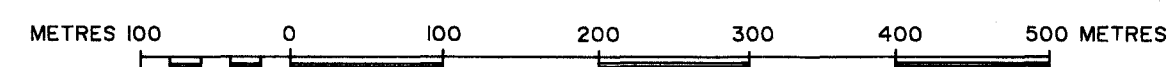
PART 2
OF
2



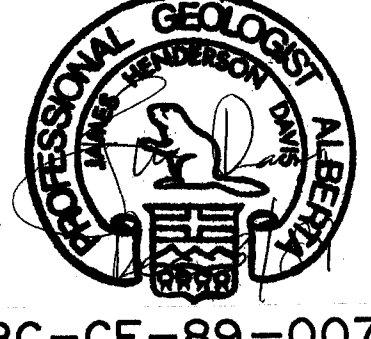
FRAME MINING CORPORATION
CATFISH PROJECT

MAP 7 - CATFISH CLAIMS/SOUTH MAP

SCALE 1 : 5000

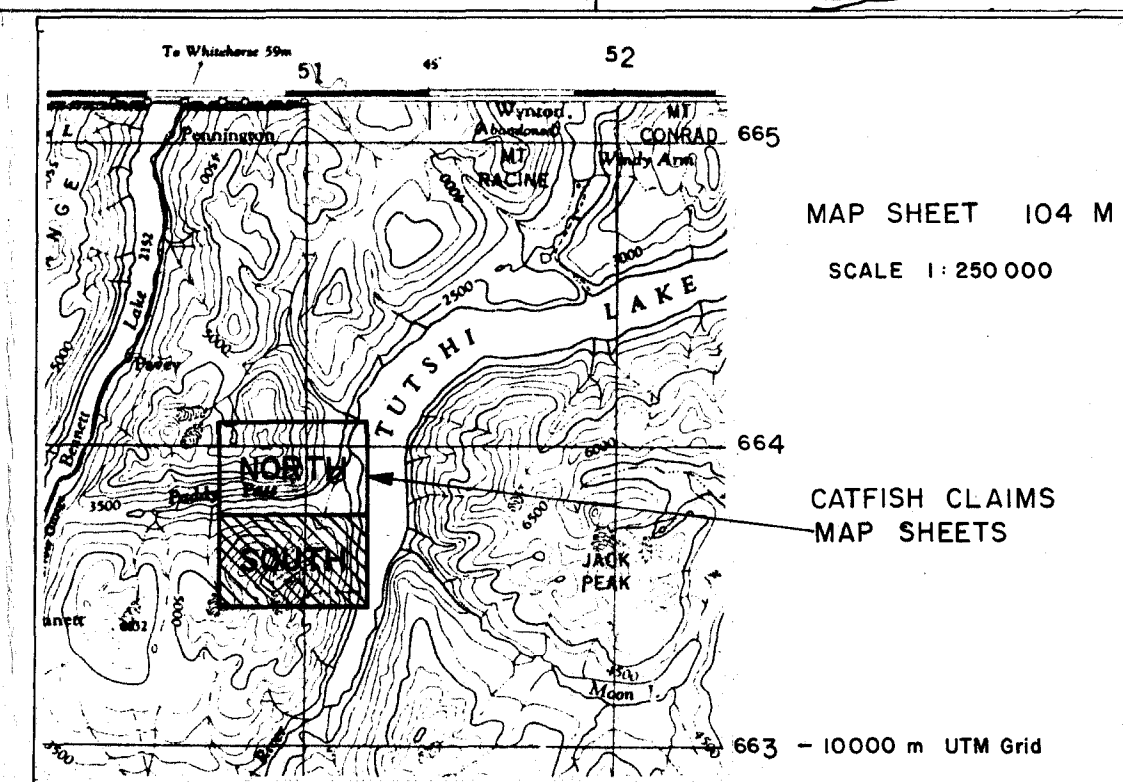
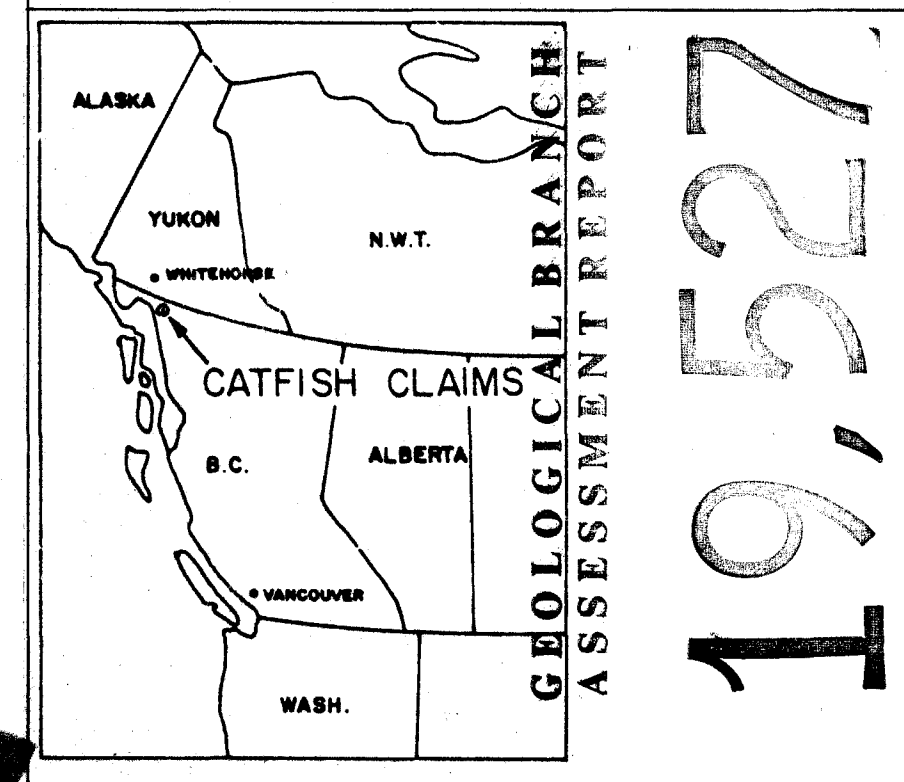


DATE : SEPTEMBER 1989



BC-CF-89-007

**PART 2
 OF 2**



66 37 000 N
 66 36 000 N
 66 35 000 N
 66 34 000 N
 66 33 000 N
 66 32 000 N

W. 5 717
 TUTSHI LAKE

TUTSHI LAKE

LEGEND

Air Photo Centres	BC77064 0553
Forest Type Boundary	
Roads Main	
Trails	
Creek Definite	
Swamp, Thred Swamp	
Openings	
Rock/Rock Bluff	
Landings	
Slide	
Buildings	
Line Tree	
Spot Height	
Contours Index	
Intermediate	
Depression	
History Logged	
Burned	
Scrubbed	
Planted	

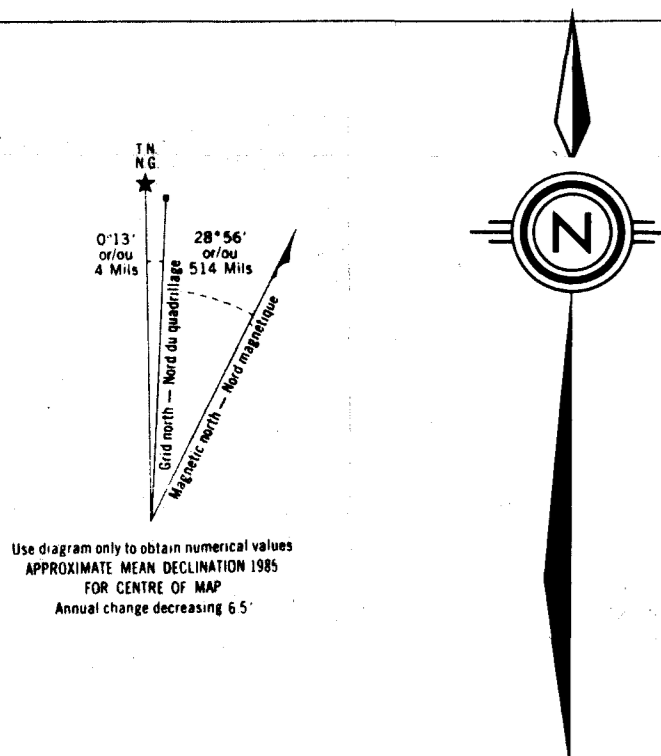
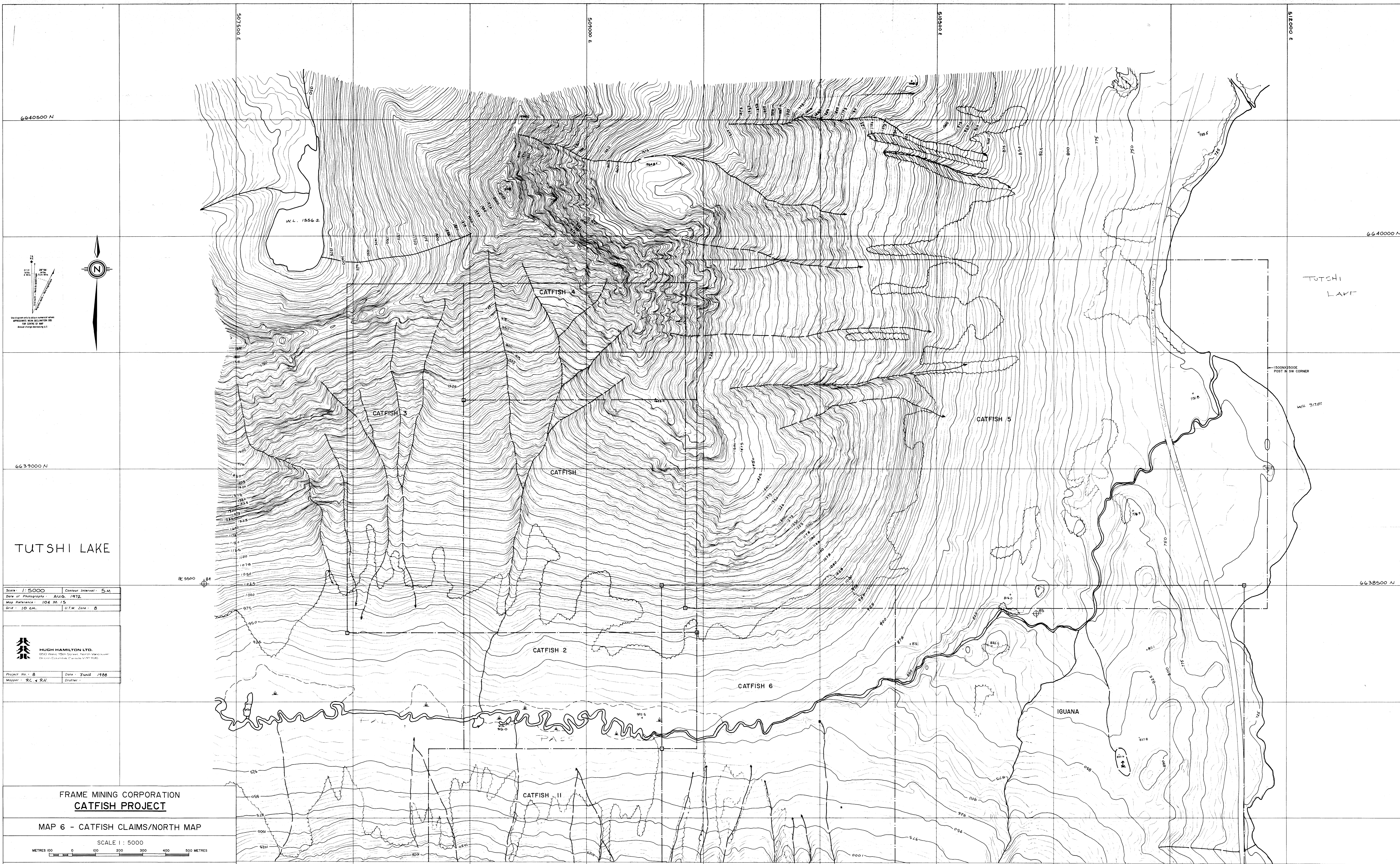
Scale: 1:5000 Contour Interval: 5m
 Date of Photography: Aug 1972
 Map Reference: 104 M, 15
 Grid: 10 C, 8 UTM Zone: 8

CLAIM BOUNDARY

LEGAL CORNER POST located by Topographic Map and altimeter

DRAWN BY TP 88-10-04

MAP 7

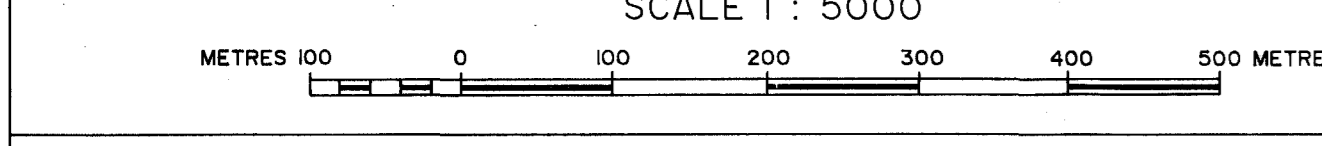


Scale: 1:5000 Contour Interval: 5m
 Date of Photography: AUG. 1972
 Map Reference: 104 M 15
 Grid: 10 CM U.T.M. Zone: 8

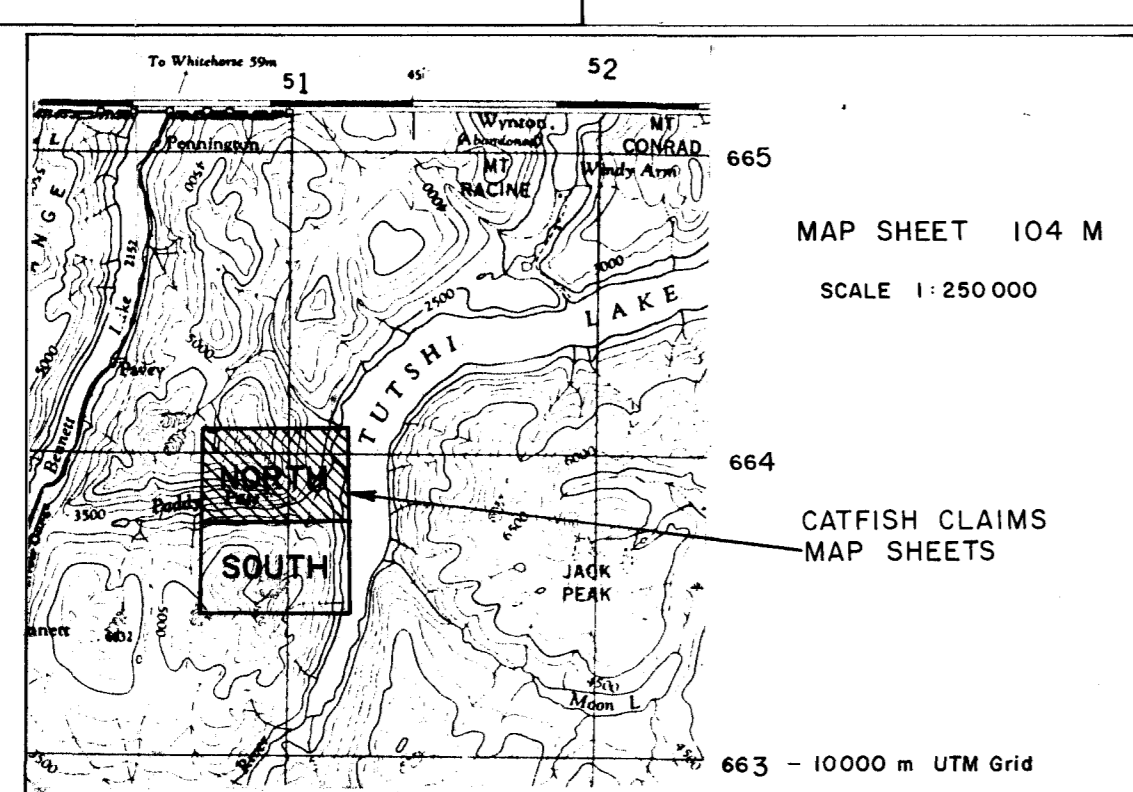
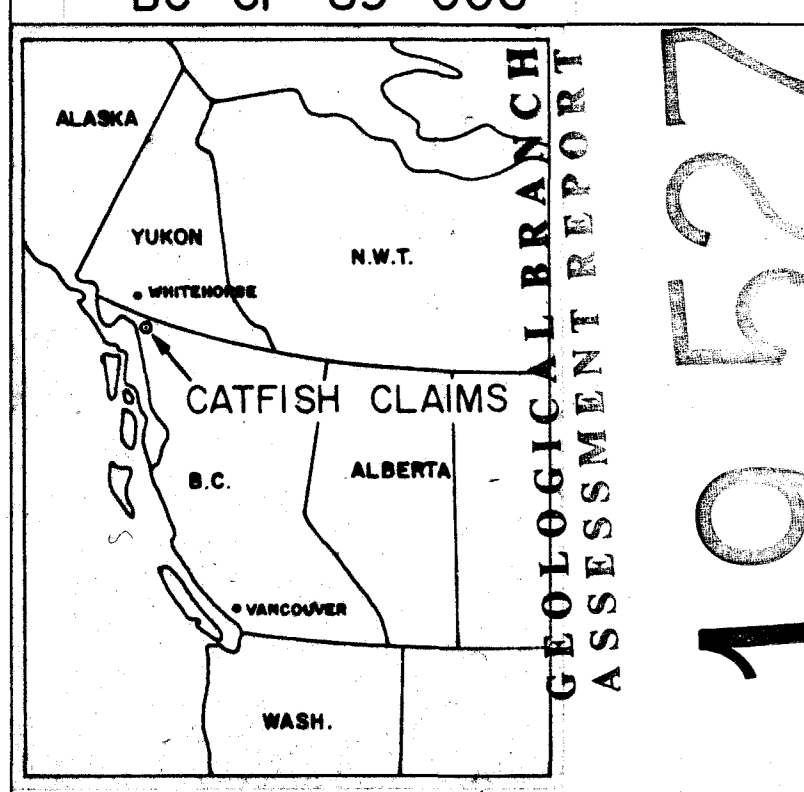
HUGH HAMILTON LTD.
 6000 West 104th Street, Surrey, B.C.
 Project No.: 8 Date: June 1988
 Mapper: R.C. & R.J. Drafter:

FRAME MINING CORPORATION
CATFISH PROJECT

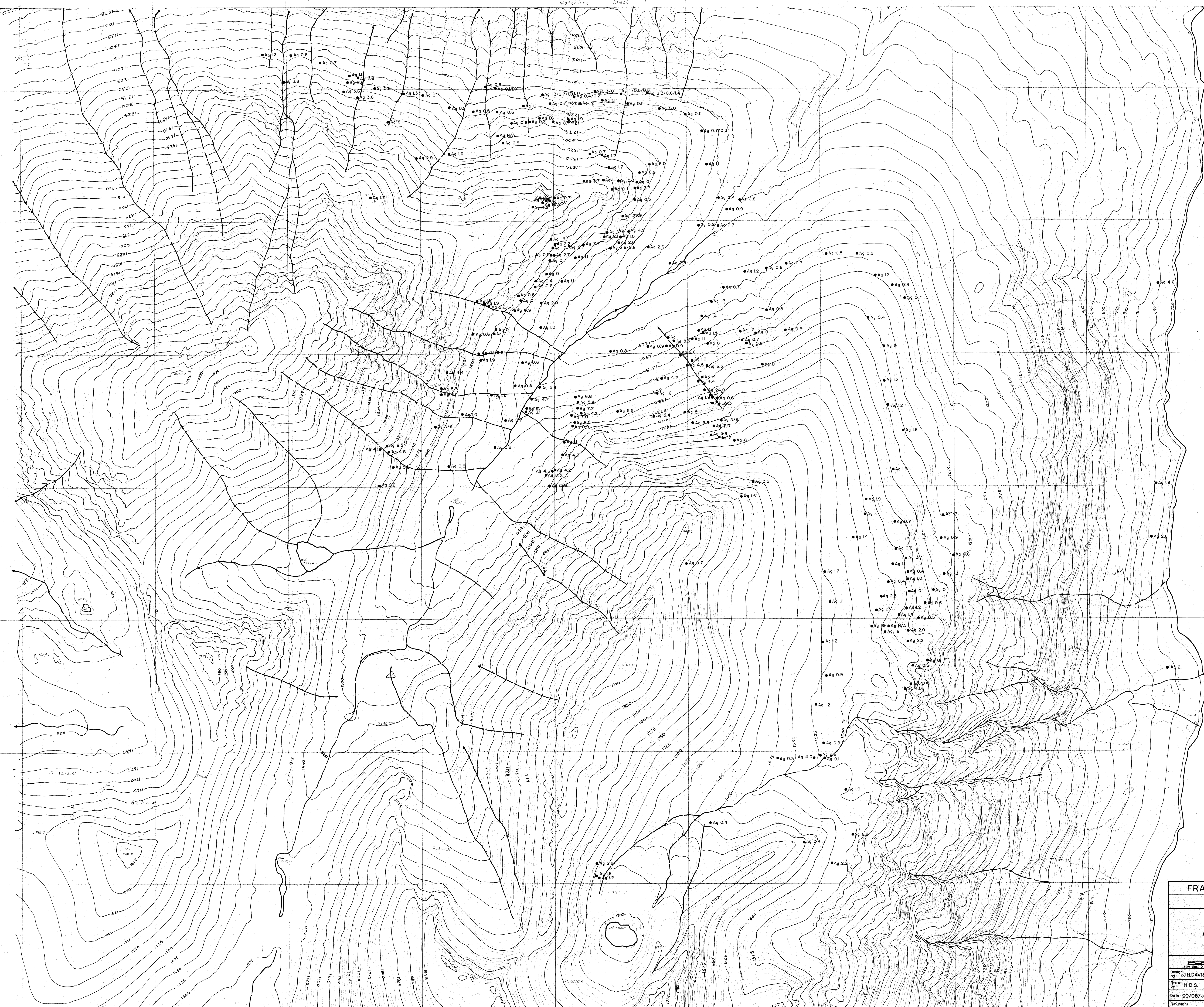
MAP 6 - CATFISH CLAIMS/NORTH MAP



DATE: SEPTEMBER 1989



CLAIM BOUNDARY
 LEGAL CORNER POST located by Topographic Map and altimeter



6.636 000 N

6.636 000 N

W 2 717
TUTSHI LAKE

GEOLOGICAL BRANCH
ASSESSMENT REPORT

19,527

6.635 000 N

TUTSHI LAKE
SHEET 2 of 2

NOTES: All values are Ag in p.p.m.s

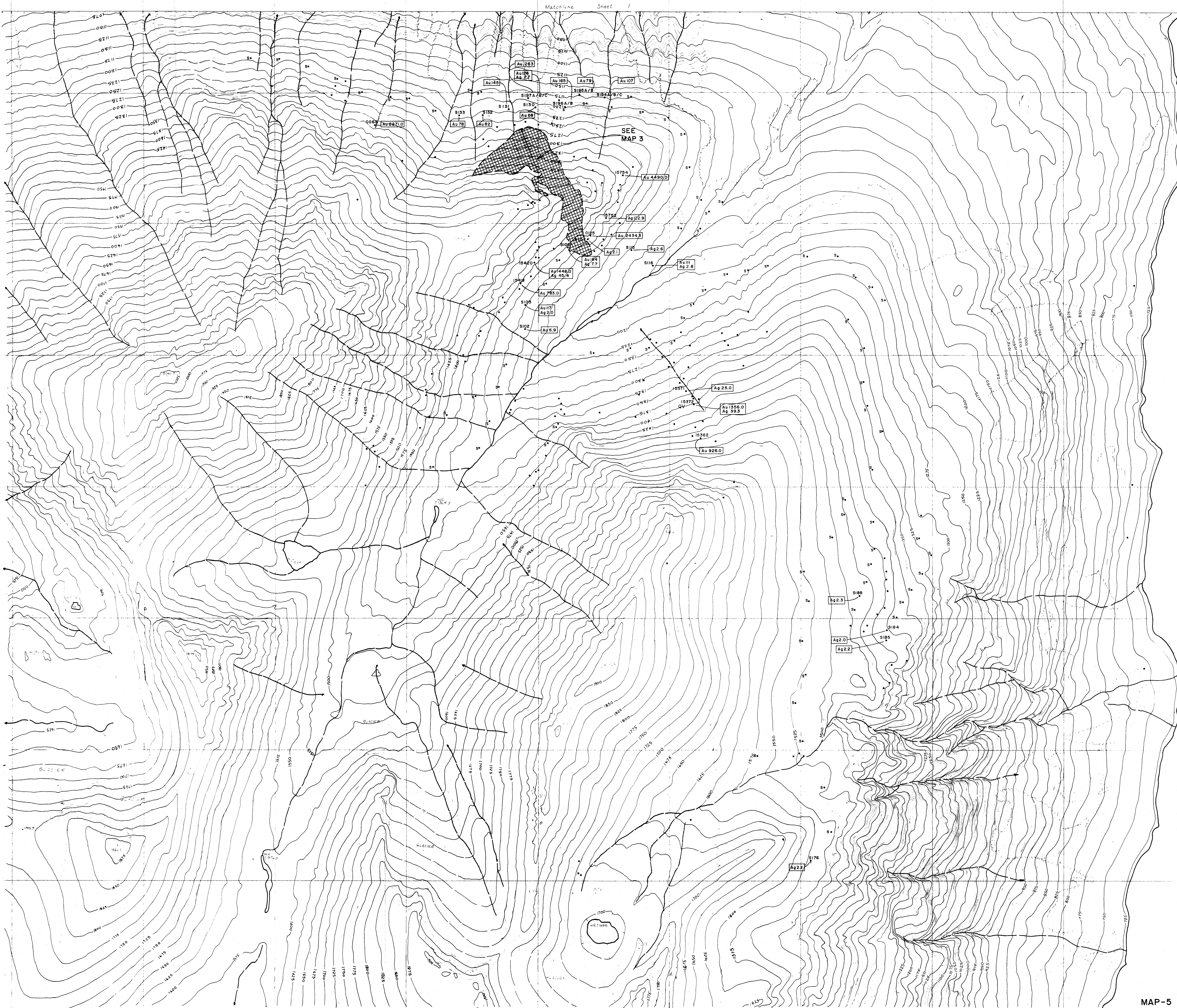
LEGEND		BC77066	053
As Photo Centre			
Forest Type Boundary			
Roads Main			
Access			
Trail			
Creeks Definite			
Indefinite			
Swamp Tree Swamp			
Openings			
Brush			
Rock Rock Bluff			
Landings			
Slide			
Buildings			
Loose Tree			
Spot Height			
Contours Indefinite			
Intermediate			
Depression			
History Logged			
Burned			
Scarified			
Planted			

FRAME MINING CORPORATION
CATFISH PROJECT

GEOCHEMISTRY
Ag IN ROCK AND SOIL
SOUTH MAP

SCALE 1:50,000

Designed by J.H.DAVIS	DRAWING NO.	NTS: 104/M/15
Drawn by H.D.S.	Sheet No.	Report No.
Date 90/08/14	BC-CF-90-005	Figure No. 3b
Revision:		



LEGEND:

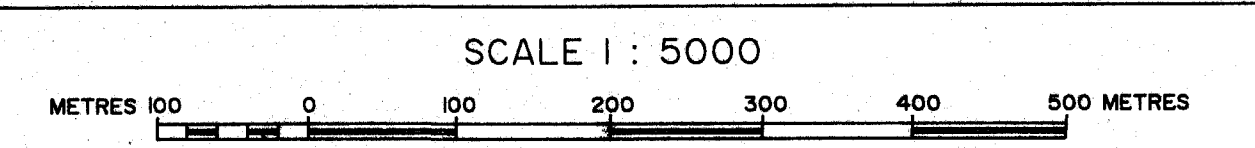
Anomalous Au and Ag determined separately for rock and soil samples by lognormal vs cumulative percent probability graphs (Sinclair, 1976) as follows:

	Anomalous cut off	Cumulative %
Rock Au	668 ppb	90 %
Ag	14.9 ppm	94 %
Soil Au	68 ppm	90 %
Ag	2.0 ppm	73 %

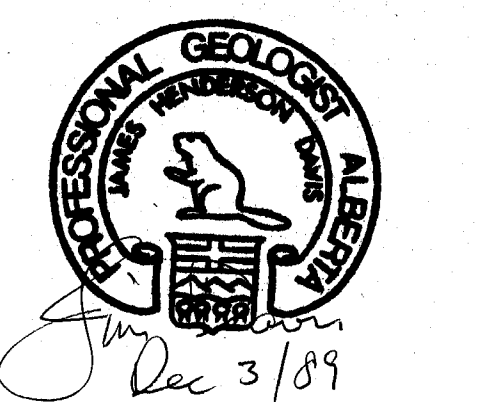
Note: Soil samples are prefixed with S, suffix indicates horizon sampled.

**FRAME MINING CORPORATION
CATFISH PROJECT**

MAP-5 GEOCHEMISTRY: Anomalous Au and Ag in Rock and Soil - South Map



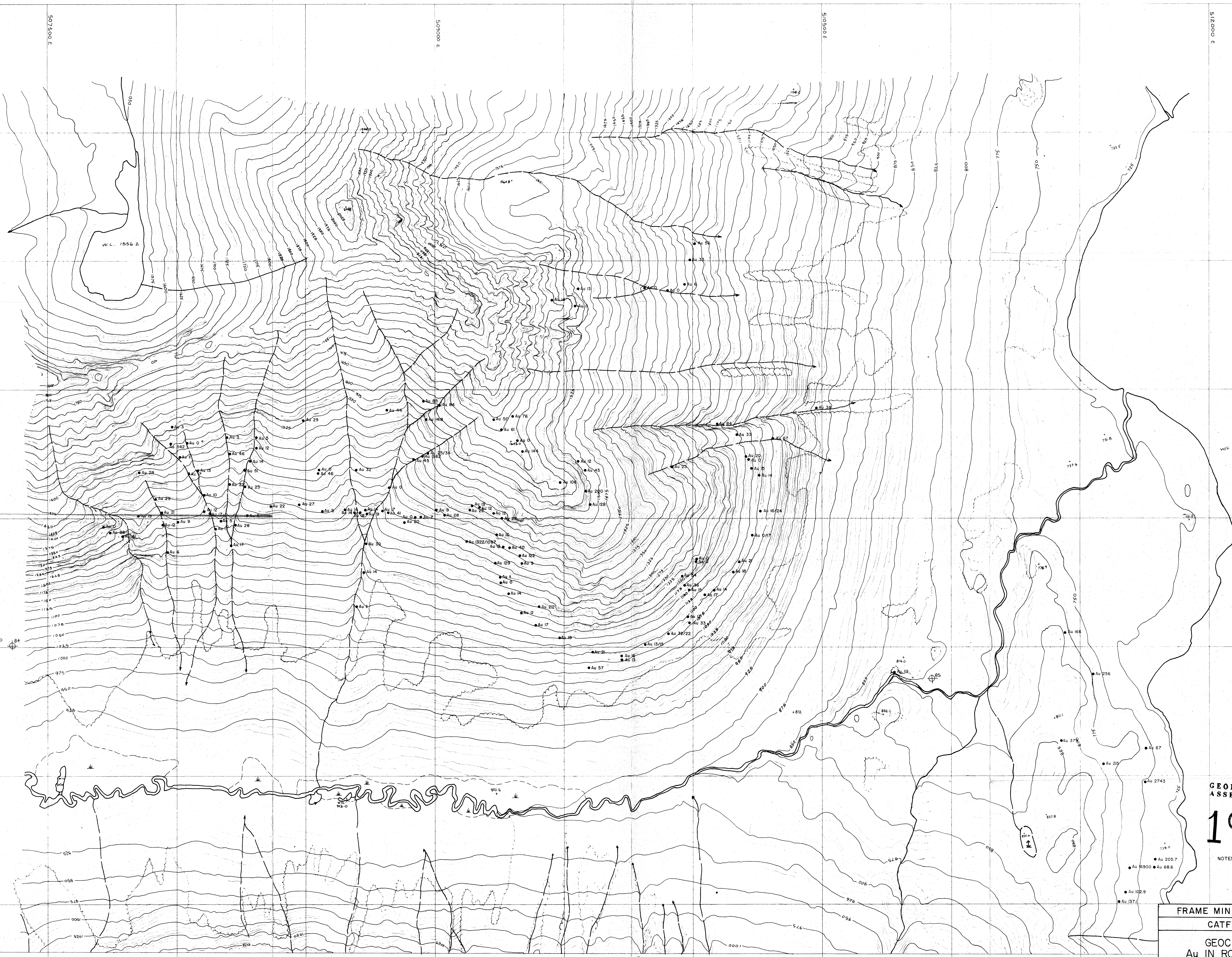
DATE : SEPTEMBER 1989
 GEOLOGY BY : J. H. DAVIS
 CONSULTING GEOLOGIST
 DRAWN BY : SONYA HANSEN
Sony Hansen



BC-CF-89-005

**GEOLOGICAL BRANCH
ASSESSMENT REPORT**

**19,527
PART 2 OF 2**



SHEET 2

GEOLOGICAL BRANCH
ASSESSMENT REPORT

19,527

NOTES: All values are Au in ppb's

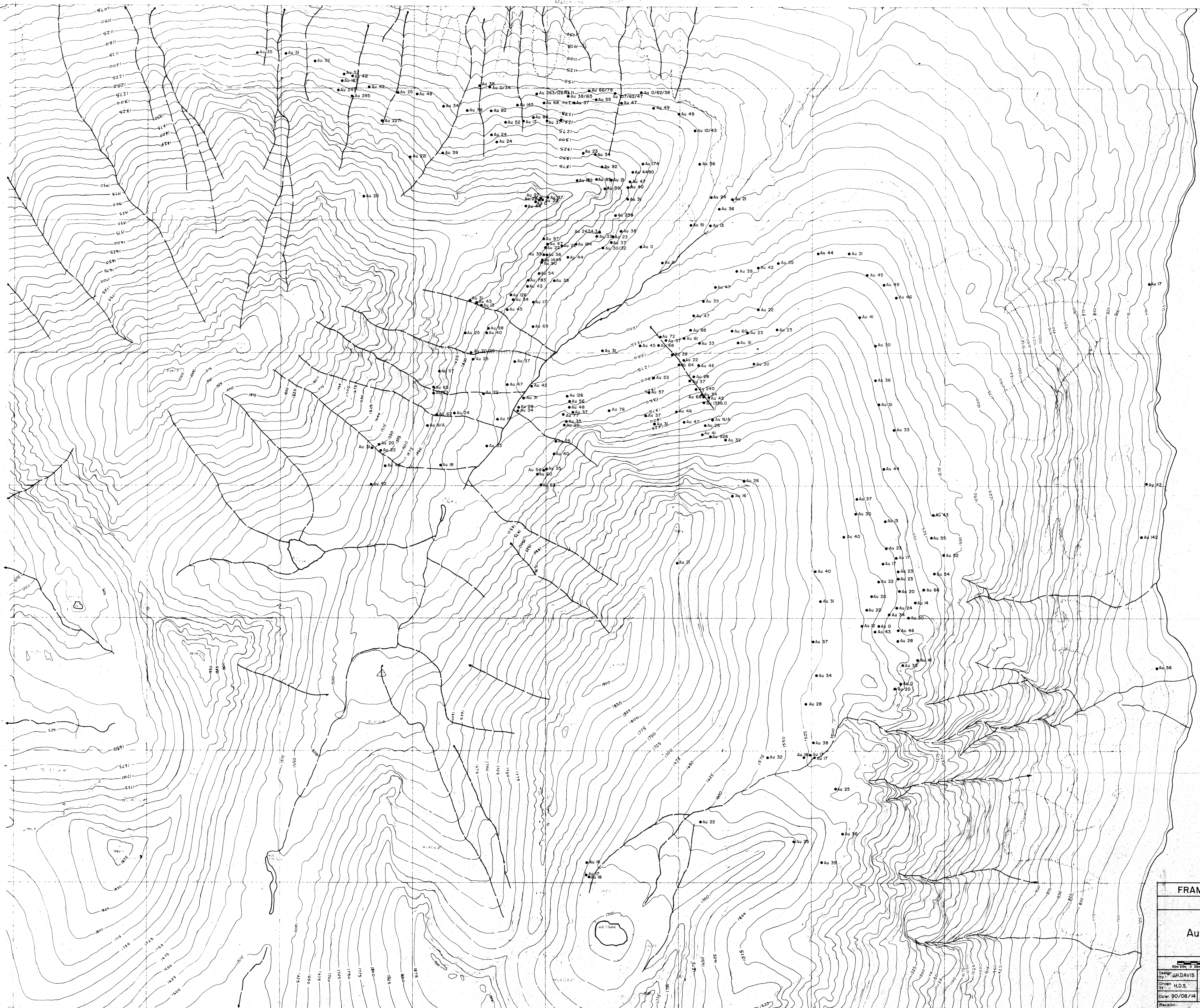
FRAME MINING CORPORATION
CATFISH PROJECT

GEOCHEMISTRY
Au IN ROCK AND SOIL
NORTH MAP

SCALE 1:5,000

DESIGNED BY: J.H.DAVIS	DRAWING NO.:	N.T.S.
DRAWN BY: H.D.S.	DATE: 90/08/14	Sheet No. 04/M/15
DATE: 90/08/14	Revision:	Report No.
		Figure No. 4d

BC-CF-90-006



TUTSHI LAKE

**GEOLOGICAL BRANCH
ASSESSMENT REPORT**

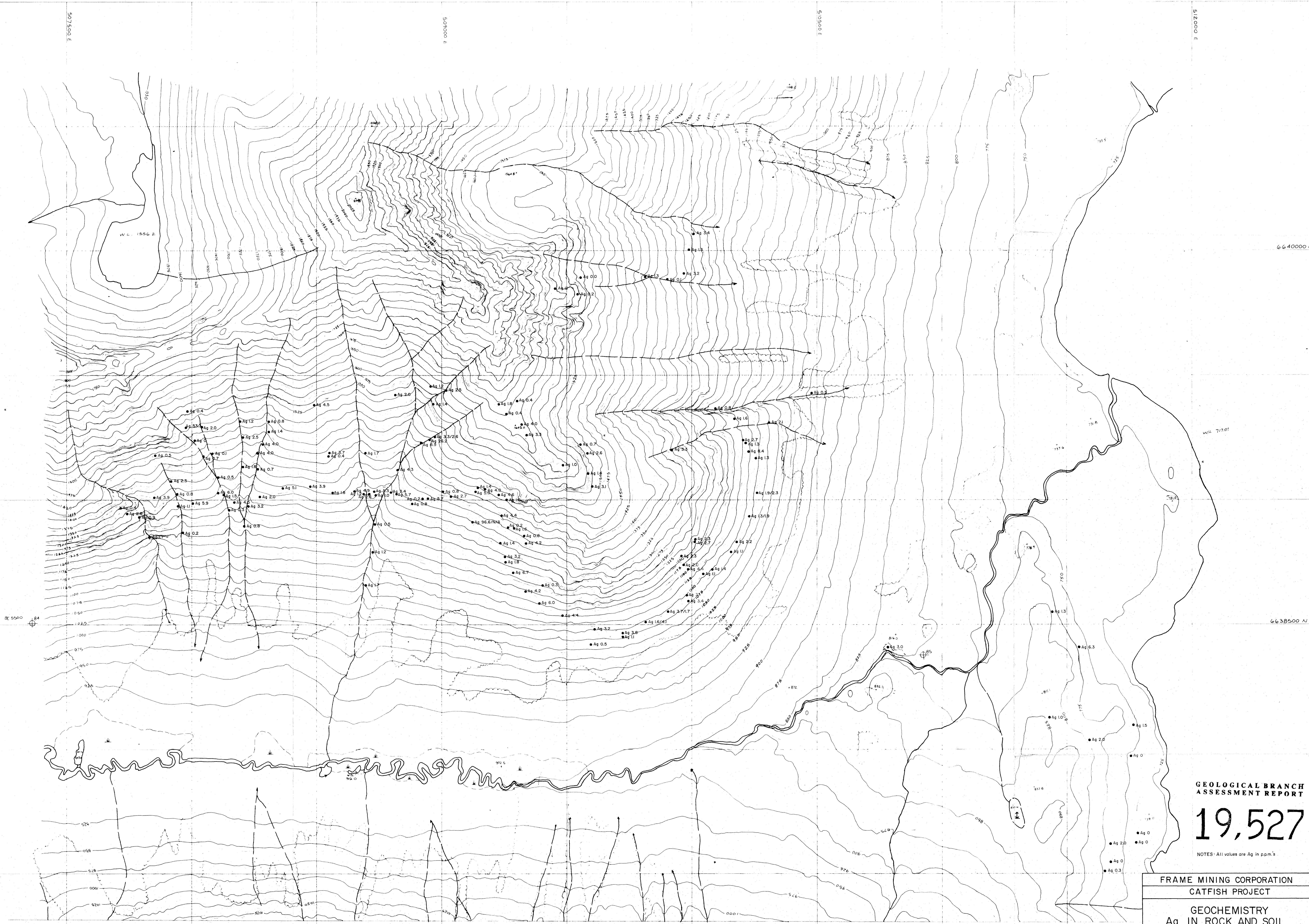
19,527

TUTSHI LAKE
SHEET 2 of 2

NOTES: All values are Au in p.p.b.

- LEGEND
- Air Photo Centres
 - Forest Type Boundary
 - Wash Main
 - Ditch
 - Creek
 - Definite
 - Indefinite
 - Swamp, Tired Swamp
 - Opening
 - Brush
 - Rock Rock Bluff
 - Landings
 - Shale
 - Buildings
 - Lone Tree
 - Spot Height
 - Contour Index
 - Intermediate
 - Indefinite
 - Depression
 - L-shaped
 - History
 - Logged
 - Burned
 - Scatter
 - Planted

FRAME MINING CORPORATION	
CATFISH PROJECT	
GEOCHEMISTRY	
Au IN ROCK AND SOIL	
SOUTH MAP	
SCALE 1:5,000	
Drawn by: J.H. DAVIS	DRAWING NO. N.T.S. 1047/M/15
Checked by: H.D.S.	Report No. BC-CF-90-004
Date: 90/08/14	Figure No. 3a



GEOLOGICAL BRANCH
ASSESSMENT REPORT

19,527

NOTES: All values are Ag in ppm's

FRAME MINING CORPORATION
CATFISH PROJECT

GEOCHEMISTRY
Ag IN ROCK AND SOIL
NORTH MAP

SCALE 1:15,000		N.T.S. 104/M/15	
Drawn by: JHDAVIS	DRAWING NO.:	Sheet No.:	Report No.:
Drawn by: H.D.S.	BC-CF-90-007		
Date: 90/08/14		Figure No. 4b	
Revision:			

SHEET 2

664000 N

6638500 N

507500 E

507000 E

506500 E

512000 E

508500 E

510000 E

511500 E

507000 E

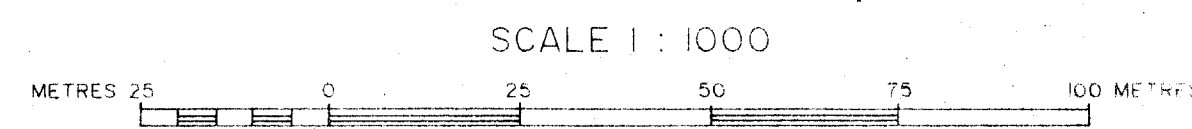
GEOLOGICAL BRANCH
ASSESSMENT REPORT

19,527

NOTES: All values are Ag in p.p.m.'s.

FRAME MINING CORPORATION
CATFISH PROJECT

MAP 3b MIDDLE RIDGE - Ag VALUES

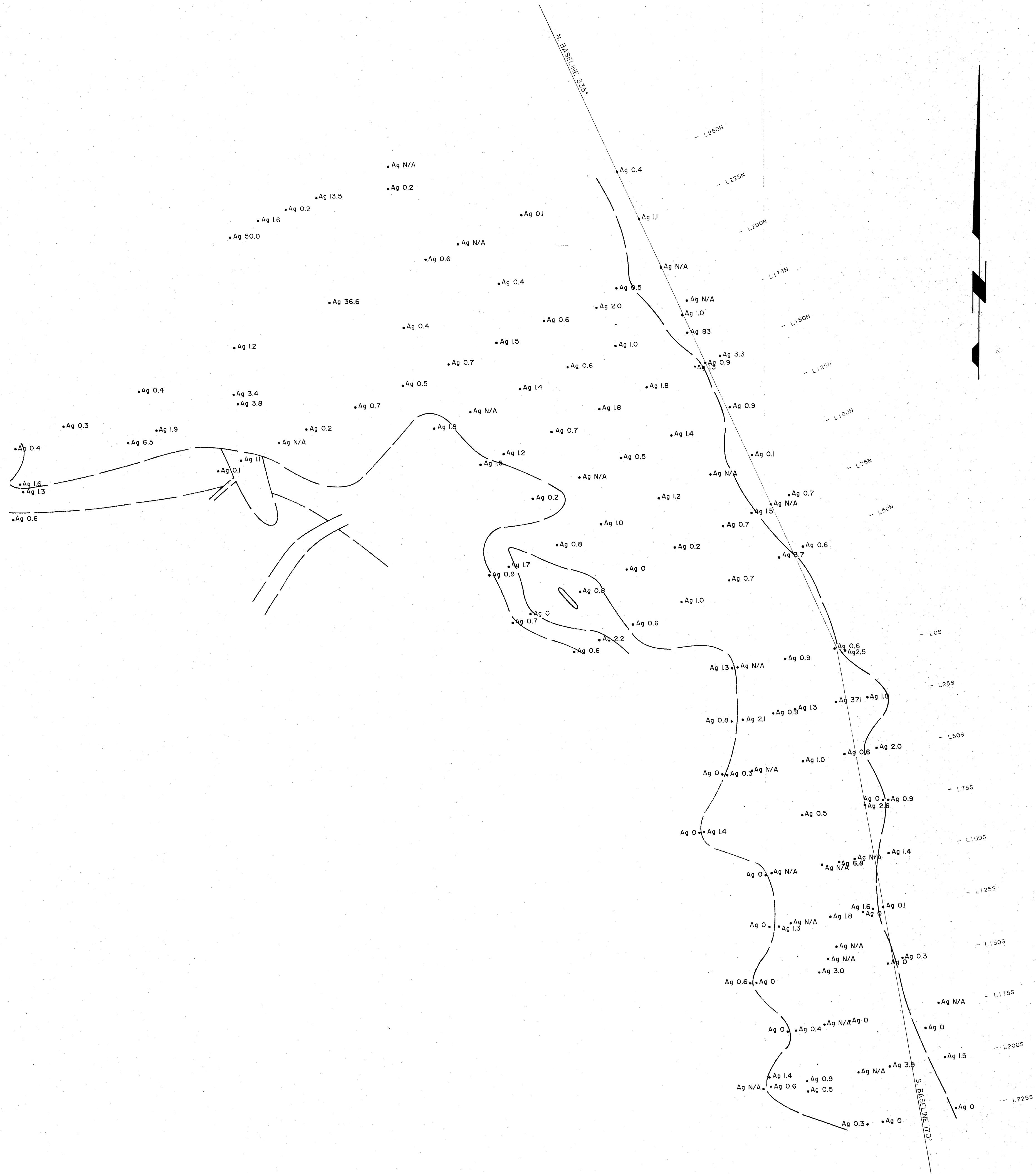


DATE : AUGUST 12/90

GEOLOGY BY : J. H. DAVIS
CONSULTING GEOLOGIST

DRAWN BY : H.D.S.

BC-CF-90-003



LEGEND :

Geological boundary	
Grid survey baseline	
Shear, fault (movement)	
Vein - known, assumed	
Foliation (inclination)	
Joint (inclination)	
Trench number	T-1
Pyrite, arsenopyrite	py, asp

NOTE : All veins have associated arsenopyrite, unless noted QV (quartz vein).

Aplite	6a
Diorite/Feldspar Porphyry	6d
Stuhni	2
PPM	1

Anomalous Au and Ag determined separately for rock and soil samples by lognormal vs cumulative percent probability graphs (Sinclair, 1976) as follows:

	Anomalous cut off	Cumulative %
Rock Au	668 ppb	90 %
Ag	14.9 ppm	94 %
Soil Au	68 ppb	90 %
Ag	2.0 ppm	73 %

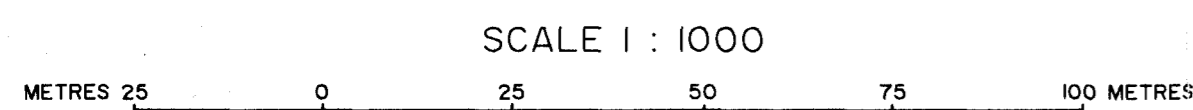
Note: Soil samples are prefixed with S, suffix indicates horizon sampled.

**GEOLOGICAL BRANCH
ASSESSMENT REPORT**

19,527 PART 2 OF 2

**FRAME MINING CORPORATION
CATFISH PROJECT**

MAP 3 - MIDDLE RIDGE APLITE ZONE

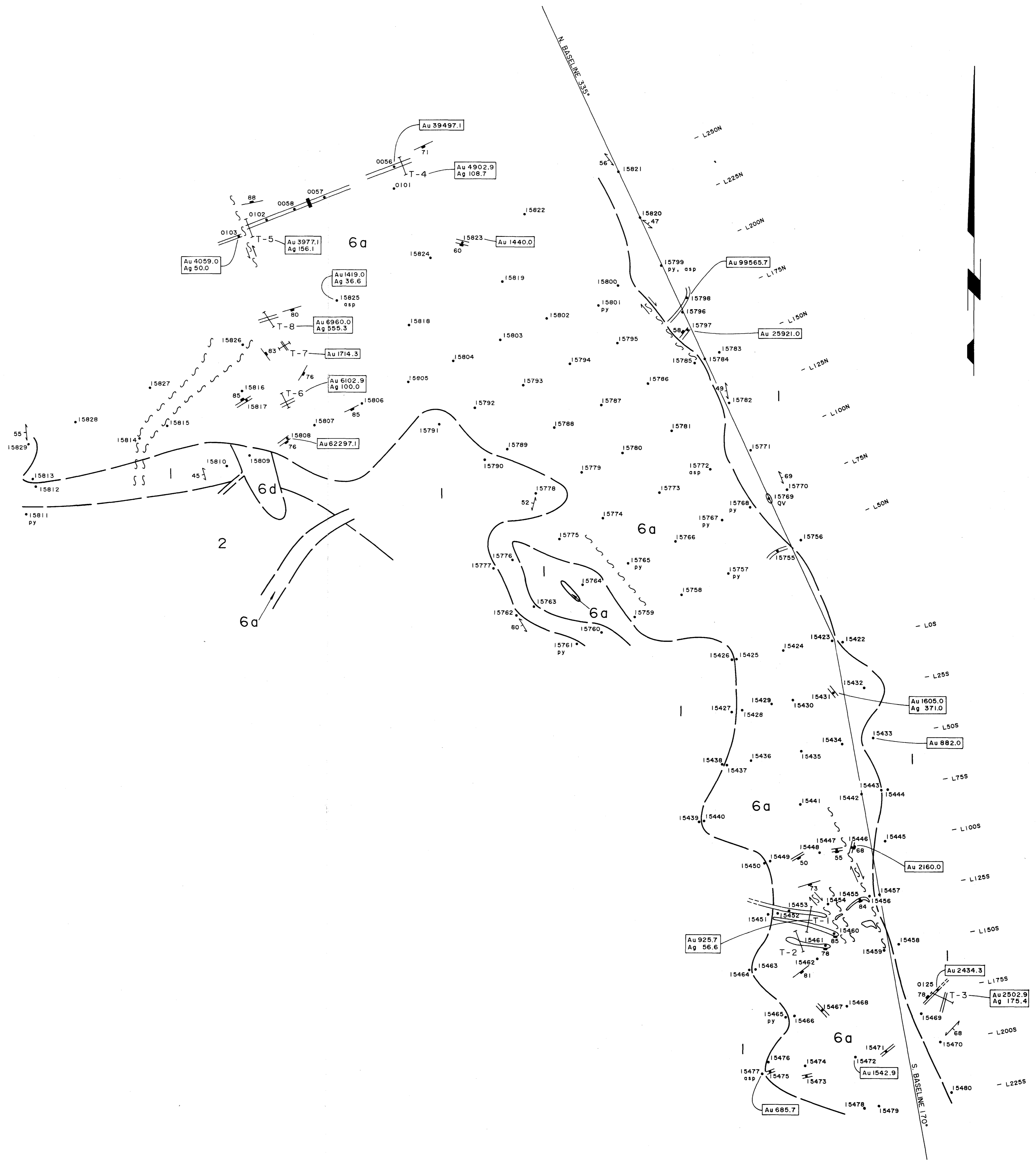
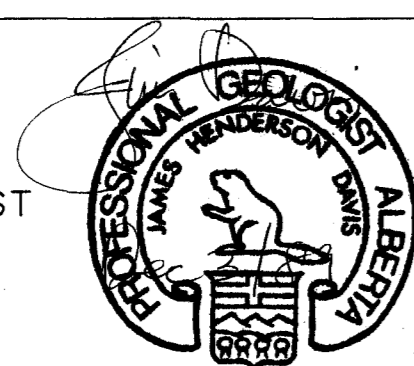


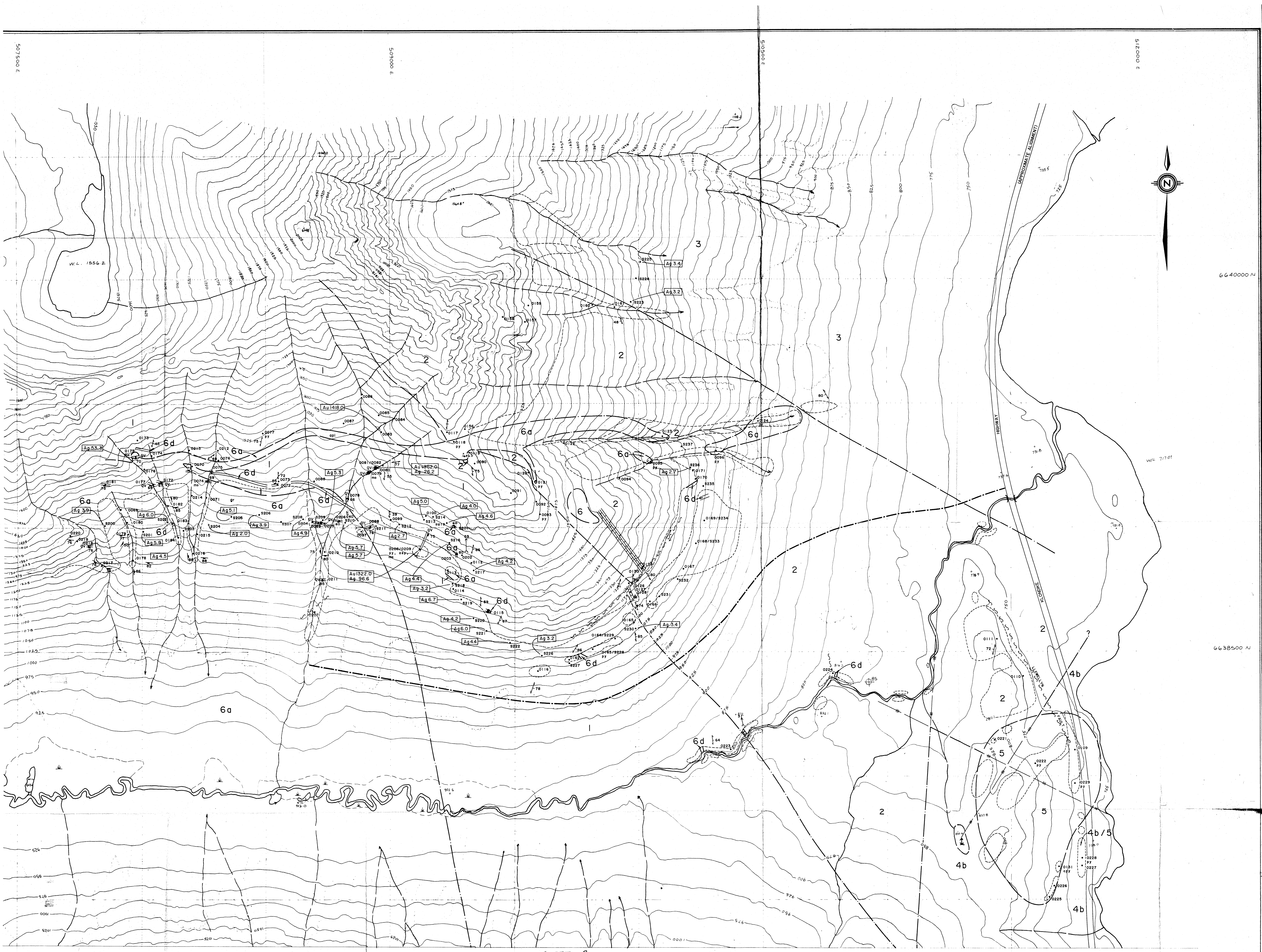
DATE : SEPTEMBER 1989

GEOLOGY BY : J. H. DAVIS
CONSULTING GEOLOGIST

DRAWN BY : SONYA HANSEN
Sony Hansen

BC-CF-89-003





LEGEND

LAYERED ROCKS

Map symbol	Age	Lithology
7	Quaternary	Unconsolidated glacial till and fluvial sediments
4	Middle to Upper Jurassic	a. Coarse grained conglomerate and other sediments b. Volcanics, breccias, tuff, banded feldspar porphyry flows c. Matrix supported conglomerate variegated argillite (within volcanic sequence)
3	Lower Jurassic	Lalberge Group, Inklin Formation Carbonaceous argillite and siltstone
2	Upper Triassic	Shuhel Group Variegated dark green hornblende-feldspar-phyllic tuffs, breccias, marble, very dark grey to black flows greywacke, silty argillite, tuffs
1	Paleozoic to Proterozoic (?)	Boundary Ranges Metamorphics Silt and gneiss of sedimentary and volcanic affinity, minor marble

INTRUSIVE ROCKS

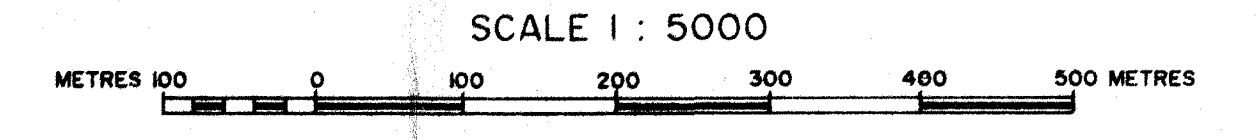
6	Upper Cretaceous	Coast intrusions a. Coarse grained diorite - hornblende granite and diorite b. As above lacking megacrysts of potassium feldspar c. Granodiorite d. Diorite and felsar country
5	Mesozoic	Granodiorite Mingayuk, M. and Rowe, J., 1983 Geology of the Taseq-Lake Area N.S. Geol. Surv. B.C. Geological Survey, Sheet 5 Map 1986-5

SYMBOLS

Geological boundaries (strike) assumed	---
Bedding orientation	~
Faults (inclination)	— —
Joint inclination	— — —
Vein or dyke inclination	— — — —
Anticline	~
Syncline	~
Minor fold hinge	~
Shear zone	— — — —
Lineament	— — — —
Colpene	— — — —
Breccia	— — — —
Adit	— — — —
Outcrop boundary	— — — —
Face boundaries	— — — —
Granite	— — — —
Argillite	— — — —
Porphy	— — — —
Chalcopyrite	— — — —
Molybdenite	— — — —
LEASE ROAD	— — — —

**FRAME MINING CORPORATION
CATFISH PROJECT**

MAP 1 - GEOLOGY-NORTH MAP



DATE : SEPTEMBER 1989
GEOLOGY BY : J. H. DAVIS
CONSULTING GEOLOGIST
DRAWN BY : SONYA HANSEN
Sonja

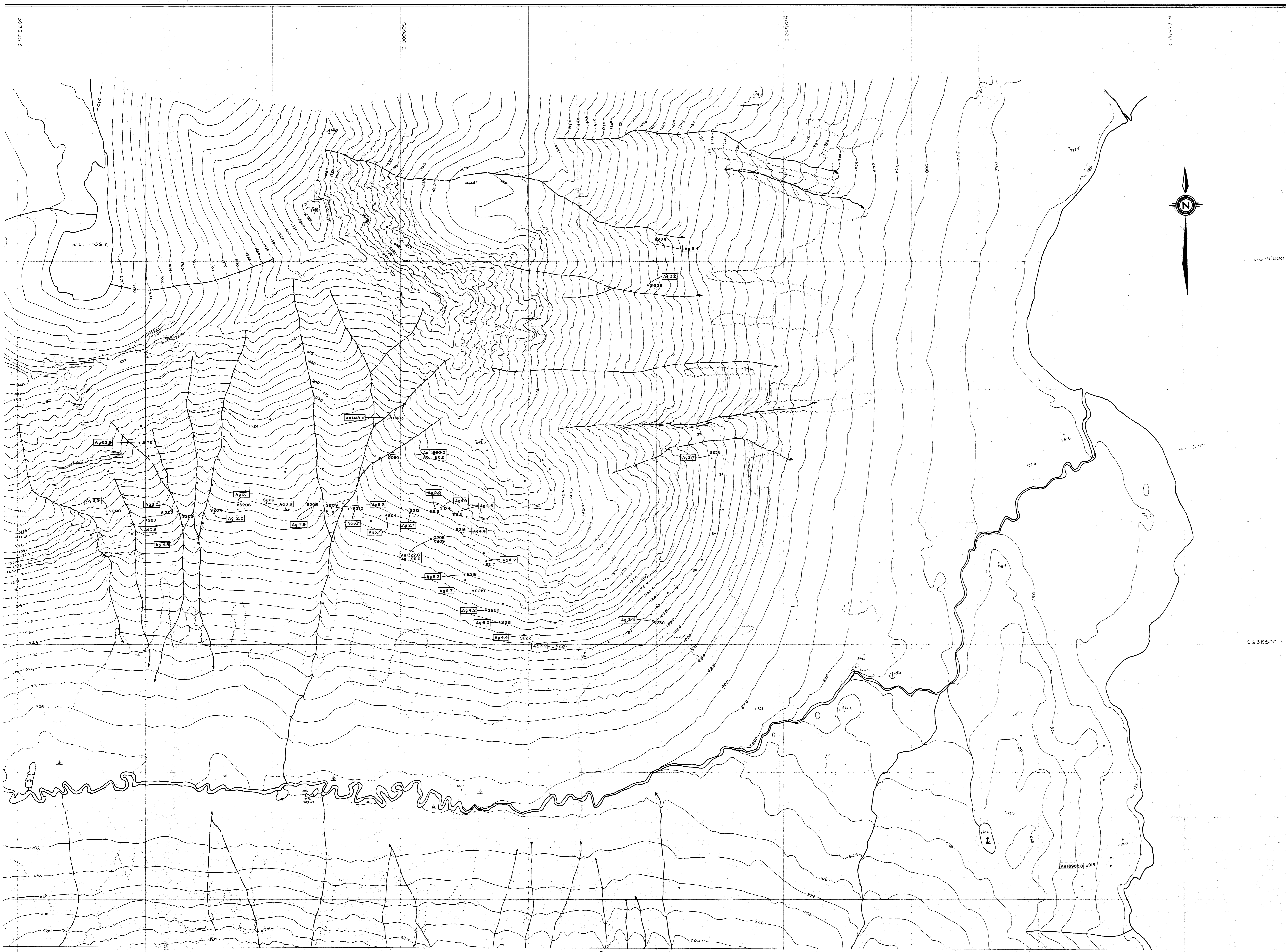


BC-CF-89-01 | GEOLOGICAL ASSOCIATION OF CANADA

19,527
PART 2 OF 2

MAP-1
6637000.0

SHEET 2



SHEET 2

LEGEND:

Anomalous Au and Ag determined separately for rock and soil samples by logarithmic vs cumulative percent probability graphs (Sinclair, 1976) as follows:

	Anomalous cut off	Cumulative %
Rock Au	6.68 ppb	90 %
Ag	14.9 ppm	90 %
Soil Au	6.8 ppb	90 %
Ag	2.0 ppm	73 %

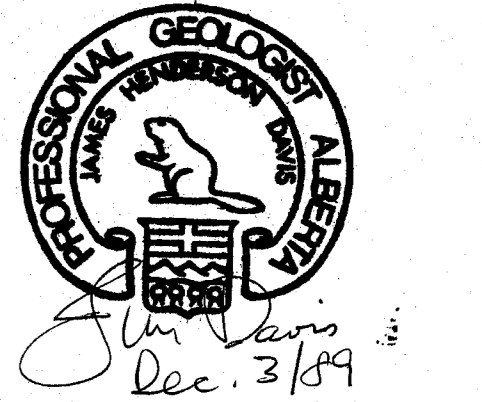
Note: Soil samples are prefixed with S, suffix indicates horizon sampled.

**FRAME MINING CORPORATION
CATFISH PROJECT**

MAP-4 GEOCHEMISTRY: Anomalous Au and Ag in Rock and Soil - NORTH MAP

SCALE 1: 5000
METRES 0 100 200 300 400 500 METRES

DATE: SEPTEMBER 1989
GEOLOGY BY: J. H. DAVIS
CONSULTING GEOLOGIST
DRAWN BY: SONYA HANSEN
Sony Hansen



BC-CF-89-004

GEOLOGICAL BRANCH
ASSESSMENT REPORT

19,527
PART 2 OF 2

MAP-4
6637000

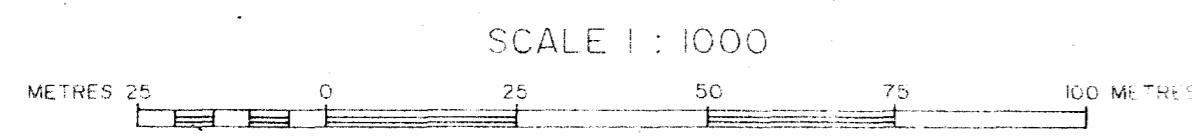
GEOLOGICAL BRANCH
ASSESSMENT REPORT

19,527

NOTES: All values are Au in p.p.b.'s.

FRAME MINING CORPORATION
CATFISH PROJECT

MAP 3a MIDDLE RIDGE - Au VALUES



DATE AUGUST 12/90

GEOLOGY BY : J. H. DAVIS
CONSULTING GEOLOGIST

DRAWN BY : H.D.S.

BC-CF-90-002

