

Assessment Report
Drilling
TASK 6 Group
(includes Task 5, 6, 7)
Clinton Mining Division
NTS 920/SE

LOG NO: 0702	RD
ACTION:	
FILE NO:	

Lat. 51 29' N
Long. 123 35' W

LOG NO: 12-31	RD.
ACTION: <i>Date received back from amendment</i>	
FILE NO:	

Owner/Operator: Pioneer Metals Corporation

**GEOLOGICAL BRANCH
ASSESSMENT REPORT**

Vancouver, B.C.
January 23, 1990

19,607

Author: S.L. Blusson, PhD

Table of Contents

Introduction

Index Map	
Location and Access	1 /
Topography	1 /
Summary	2 /

Procedure and Results	3 /
-----------------------	-----

Appendices

Drill Hole Location Map	
Statement of Costs	4 /
Statement of Qualifications	5 /

52 53 40' 54 55 56 57 58 59 35' 60 61 62 63 464000 E

Task 9

Task 10

Task 11

Task 12

Mike 2

Task 8

Task 7

Telegraph Hill

Task 6

Mike 1

Mike 3 Fr.

Task 5

T.K.

Task 1

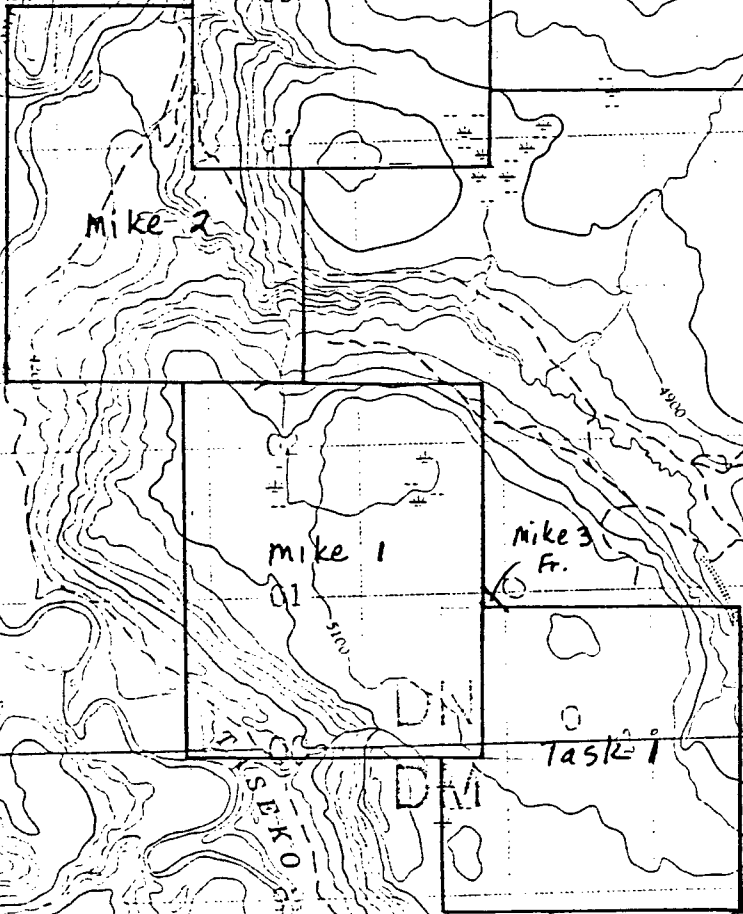
Fish Lake

FRASER PLATEAU

(INTERIOR PLATEAU)

Index map
Task 6 Gp.

scale 1:50,000



Introduction

Location and Access

The Task 6 group is adjacent to the Fish Lake property presently held by Cominco Ltd. The property is located about 250 Km north of Vancouver and 120 Km SW of Williams Lake. Access is provided by paved highway (No. 20) to Lee's corner, thence by the well maintained Taseko Lake gravel road to Fish Lake turn off, followed by 8 km of good dirt road to the Fish Lake campground. Four wheel drive vehicle may be required during spring breakup on the last few kilometres along Fish Creek. Float planes are easily accommodated by Fish Lake.

Topography

The area is part of the Chilcotin plateau with subdued relief; elevations ranging from 1450 to 1600 meters above sea level. Vegetation is generally open with numerous meadows, lightly wooded grasslands and clumps of jackpine and alpine fir. Tributaries to Fish Creek are dry most of the year.

Summary

The intent of this investigation which was run concurrently over a nine day period with the Task 9 and Task 8 groups is to examine the adjacent areas of a large gold-enriched porphyry copper system to check for an outward zoning of mineralization, alteration and structures that may control it. Previously in 1988 this work was aided by a dozer and backhoe to provide access and check overburden depths.

Two features of the region hamper this effort. A discontinuous but locally thick cover of post-mineral plateau basalt and a continuous mantle of glacially derived overburden that is particularly thick in low lying areas. Previous pitting and trenching in the area in 1988 showed that overburden depths mostly exceeded backhoe limits so an overburden drill was called for. The present program utilized a track mounted reverse circulation rig set up for both tri cone rotary and down the hole hammer percussion drilling. Cuttings were collected through a cyclone and where appropriate were split, sieved and sent for geochemical assay. Two holes were drilled on the Task 6 group of which one hit bedrock.

Procedure and Results

The truck-mounted reverse circulation drill supplied by Northspan drilling of Kelowna, B.C. is highly mobile, has its own dozer blade for site preparation and is capable of hole depths exceeding 500' in favourable bedrock. Numerous problems were encountered however in drilling overburden such that numerous holes of less than 60' had to be stopped before bedrock was reached. Tricone rotary was used where possible in this finer textured overburden with a switch to percussion hammer when boulders or bedrock was encountered. Drilling was mostly dry but in clay rich overburden water injection was found to be essential.

Samples were screened to 75 mesh before analysis for copper and gold. Rock chips were examined by binocular microscope for sulfide or alteration minerals.

Drill Results

Of the two holes drilled on the Task 6 group, RC 22 reached bedrock at 30' and was continued for 110' in hard greywacke and conglomerate, probably the Kingsvale group. RC 23 was abandoned in overburden at 50 feet.

Cost Statement

Task 6 Group

Wages S. Blusson @ \$500/day for	1 day	\$ 500
W. Smith @ \$250/day for	1 day	250
Camp Food & Lodging 4 @ \$75/day	1 day	300
4 x 4 Truck rented 1 @ \$100/day	1 day	100
Quad Bike Rented 2 @ \$40/day	1 day	80
Airfare 2 people		250
Drilling (Track R/C) @ \$2500/day	1 day	2,500
Mobe & De-mobe		750
Assay		100
Report		<u>300</u>
		\$5,130

APPENDIX B

STATEMENT OF QUALIFICATIONS

Dr. S.L. Blusson is a graduate of the University of B.C. (B.Sc. Geology) and of the University of California Berkely (Ph.D. Geology and Geochemistry). Between 1965 and 1981 Dr. Blusson worked as a research geologist for the Geological Survey of Canada and is presently Vice-President of Exploration for Pioneer Metals Corporation.

S. L. Blusson
S. L. Blusson

Drill log.

RC 22

0 - 9.1 meters Overburden, grey glacial clay
with bouldery gravel.

No samples

9.1 - 33.5 m hard greywacke and chert pebble
conglomerate Kingsvale group?
no alteration or metamorphism,
No samples taken

RC 23

0 - 15.2 meters Overburden, grey glacial silt, clay
gravel and boulders. Hole abandoned
in boulders; no sample

Drill Hole location Map
(Task B and Task 6 groups)

○ RC1 collar location of vertical reverse circulation drill hole

○ 1988 backhoe pit

