

GEOLOGICAL REPORT

LOG NO: 0202	RD.
ACTION:	
FILE NO:	

on the PROSPECTORS DREAM GROUP  
  
including Reverted Crown Grants  
PROSPECTOR'S DREAM, OLD ABE and BEND'OR  
  
plus Two-Post Mineral Claims  
KEN 1, KEN 2, KEN 3, KEN 4,  
KEN 5, KEN 6, KEN 7 and KEN 8

situated in  
the FORT STEELE MINING DIVISION

NTS 82F/8E

LATITUDE 49° 26'

LONGITUDE 116° 01'

CLAIM OWNER: EDWARD J. FROST

OPERATOR: EDWARD J. FROST

CONSULTANT: FRANK O'GRADY, P.ENG.

AUTHOUR: FRANK O'GRADY, P.ENG.

STATEMENT OF WORK SUBMITTED: NOVEMBER 1, 1989

DATE REPORT SUBMITTED: JANUARY 26, 1990

FRANK O'GRADY, P. Eng.

GEOLOGICAL BRANCH  
ASSESSMENT REPORT

19,614

## TABLE OF CONTENTS

	PAGE
INTRODUCTION.....	1
PROPERTY.....	1
LOCATION & ACCESS.....	2
HISTORY.....	2
AREA GEOLOGY.....	3
GEOLOGICAL DESCRIPTION & VALUATION.....	3
BIBLIOGRAPHY.....	5
/ ITEMIZED COST STATEMENT.....	6
AUTHOUR'S QUALIFICATIONS.....	7

## LIST OF MAPS

FIGURE 1	B.C. PROVINCIAL ROAD MAP
FIGURE 2	LOCATION MAP 1:300,000
FIGURE 3	G.S.C. OPEN FILE 820 GRASSY MOUNTAIN
FIGURE 4	CLAIM MAP 1"= 1/2 mile 82F/8E
FIGURE 5	GEOLOGY MAP 1:1500 F.O'Grady (in pocket on back cover)

## APPENDICES

APPENDIX 1	ASSAY CERTIFICATE
APPENDIX 2	REPORT OF THE MINISTER OF MINES 1898 p. 1013

## INTRODUCTION

Ed Frost controls the Prospectors Dream Group consisting of three reverted Crown Grants and 8 two-post mineral claims. This claim block is situated approximately 19 kilometers southwest of Cranbrook, British Columbia (Figure 1).

During July 1989 a program of geological mapping was carried out on the area of the reverted Crown Grants. The area was mapped on a scale of 1:1500 and a total of 60 hectares was mapped. Seven grab samples were taken from the Prospector's Dream and Old Abe reverted Crown Grants and assayed for gold.

## PROPERTY

The property consists of three reverted Crown Grants and the KEN two-post mineral claims:

Reverted Crown Grants	Record #	Lot #
PROSPECTOR'S DREAM	2786	3772
BEND'OR	2787	3773
OLD ABE	2788	3774

Two-Post Claims	Record #
KEN 1	1144
KEN 2	1145
KEN 3	1146
KEN 4	1147
KEN 5	1148
KEN 6	1149
KEN 7	1150
KEN 8	1151

The property, hereafter referred to as the PROSPECTORS DREAM Group (Figure 4), is owned and operated by Ed Frost of Fort Steele, British Columbia.

## LOCATION & ACCESS

The Prospectors Dream Group is located in the Purcell Mountains approximately 19 kilometers southwest of Cranbrook, B.C. (Figure 2). Elevations range from 1676 meters (5500 feet) to 1800 meters (5900 feet) above sea level.

The claims are situated on the drainage of an unnamed tributary of Weaver Creek which is a tributary of the Moyie River.

Access to the property from Cranbrook, B.C. is by proceeding south from Cranbrook on Highway 93 a distance of 12 Kilometers to where the Lumberton forest access road branches to the west. Proceeding west on the Lumberton Road a distance of 10.3 Kilometers to the Noke Creek Road. (The Noke Creek Road is not marked and could easily be missed.) Then by proceeding north on the Noke Creek Road a distance of 3.7 Kilometers the road forks and is followed on the left fork a distance of 3.6 Kilometers. At this point the road again forks and the initial post of two-post claims KEN 1 and KEN 2 is situated on the north edge of the road. Also, this location is near the south boundary of reverted Crown Grant BEND'OR (Lot 3773).

## HISTORY

The Prospectors Dream property is referred to in the Report of the Minister of Mines 1898 (Appendix 2). Therefore, the two declines, two shafts and numerous hand trenches were excavated prior to 1898.

Ed Frost, the present owner, acquired the property in 1978. During 1979 Mr. Frost had a branch road put into the property by bulldozer from an existing logging road to the mineralized showings. In addition, some of the old workings were exposed by bulldozer in that year.

During 1983 the property was optioned to William Inverarity who in turn optioned it to Fenway Resources. The property then formed part of the Weaver claim group most of which is situated adjacent to and immediately west of the current Prospectors Dream group. The Weaver claim group was explored during 1983 and 1984, however, no work was conducted on the area underlying the Prospectors Dream group.

The Prospectors Dream group was returned to Ed Frost in 1988. During 1989 Ed Frost retained Frank O'Grady, P.Eng. to do a program of geological mapping on the property.

#### AREA GEOLOGY

Geological Survey of Canada Open File 820 (1981) of the Grassy Mountain Map Sheet exhibits the general geology of the area. The mapping was carried out by J.E. Reesor of the Geological Survey of Canada during 1980 and 1981. A portion of the map and the accompanying legend form Figure 3 of this report.

The aforementioned map shows the area of the Prospectors Dream group underlain by Middle Aldridge sediment and massive intrusive. Detailed mapping by the authour confirmed these two rock types on the mapped area.

The Geological Notes that accompany Open File 820 state: "Commonly major valleys are drift covered, as well as the zone between 5500 and 6500 feet elevation."

The Prospectors Dream Group lies between 5500 feet (1676 meters) and 5900 feet (1800 meters). It is, with the exception of the showing area, drift covered.

#### GEOLOGICAL DESCRIPTION & VALUATION

Two principal rock types underly the Prospectors Dream claim group. The northern portion of the showing area is underlain by Middle Alldridge sediments of argillite composition. These sediments are in beds of 10 centimeters to 70 centimeters thick. They strike approximately 15 degrees east of north and dip 45 degrees to the west.

A quartz vein .3 meters wide with an accompanying additional .7 meter shear zone lies conformably within the sediments. Two shafts 1.5 meters by 1.5 meters have been sunk on the vein. The shafts are badly sloughed in and filled with water to within 2 meters of the top.

The quartz vein material from the trenches is from milky white to orange colour. Material in the quartz consists of pyrite, in cubes and on shears, minor chalcopyrite, sericite and hematite.

Because of the sloughing, it is not possible to take a representative sample across the width of the vein. Two grab samples were taken from piles of quartz vein material near the shaft collars. The grab sample from the northern shaft assayed .85 oz/ton gold. The grab sample from the southern shaft assayed 1.34 oz/ton gold.

Appendix 1 of this report contains the assay certificate and sample locations information. The samples were analysed by Echo Bay Mines at Lupin Mine, N.W.T. using the fire assay method for gold.

The southern portion of the showing is underlain by diorite of the Moyie sills.

A quartz vein and accompanying shear approximately 1.5 meters wide is exposed within the diorite. The vein strikes at 100 degrees east of north and dips at 15 degrees to the north. The vein contains minor pyrite and 10 - 15% black hematite. A grab sample from a 10 ton stockpile in front of this decline assayed 2.13 oz/ton gold.

A second decline is poorly exposed approximately 50 meters to the south and at a slightly lower elevation. A grab sample of quartz vein material from the front of the decline assayed .03 oz/ton gold. The quartz vein material at this location is milky white to orange where gossan is present.

A sample of diorite material from the footwall of the vein in this area assayed .021 oz/ton gold.

Figure 5 of this report is the Geological Map of the Prospectors Dream Group, including the grab sample locations. The boundaries were located by topographic map.

The Prospectors Dream Group property is virtually unexplored. The quartz vein near the shafts, the quartz vein exposed in the declines combined with the encouraging gold values from the proximal piles of rock make this property worthy of further exploration.

#### BIBLIOGRAPHY

1. Report of the Minister of Mines 1898
2. Geological Survey of Canada Open File 620 (1981)  
Grassy Mountain Map Sheet by J.E. Reesor

ITEMIZED COST STATEMENT

TOTAL COST

Geological Mapping, Frank O'Grady, P.Eng.  
June 8, 9 and 10, 1989  
3 days @ \$350/day

\$1,050.00

Transporation, four-wheel drive  
from Kimberley to property  
June 8, 9 and 10, 1989  
3 trips x 123 km x \$.25/km

92.25

7 Gold Assays @ \$10/assay

70.00

Report Preparation, including drafting  
Frank O'Grady, P.Eng.  
3 days @ \$350/day

1,050.00


---

TOTAL \$2,262.25

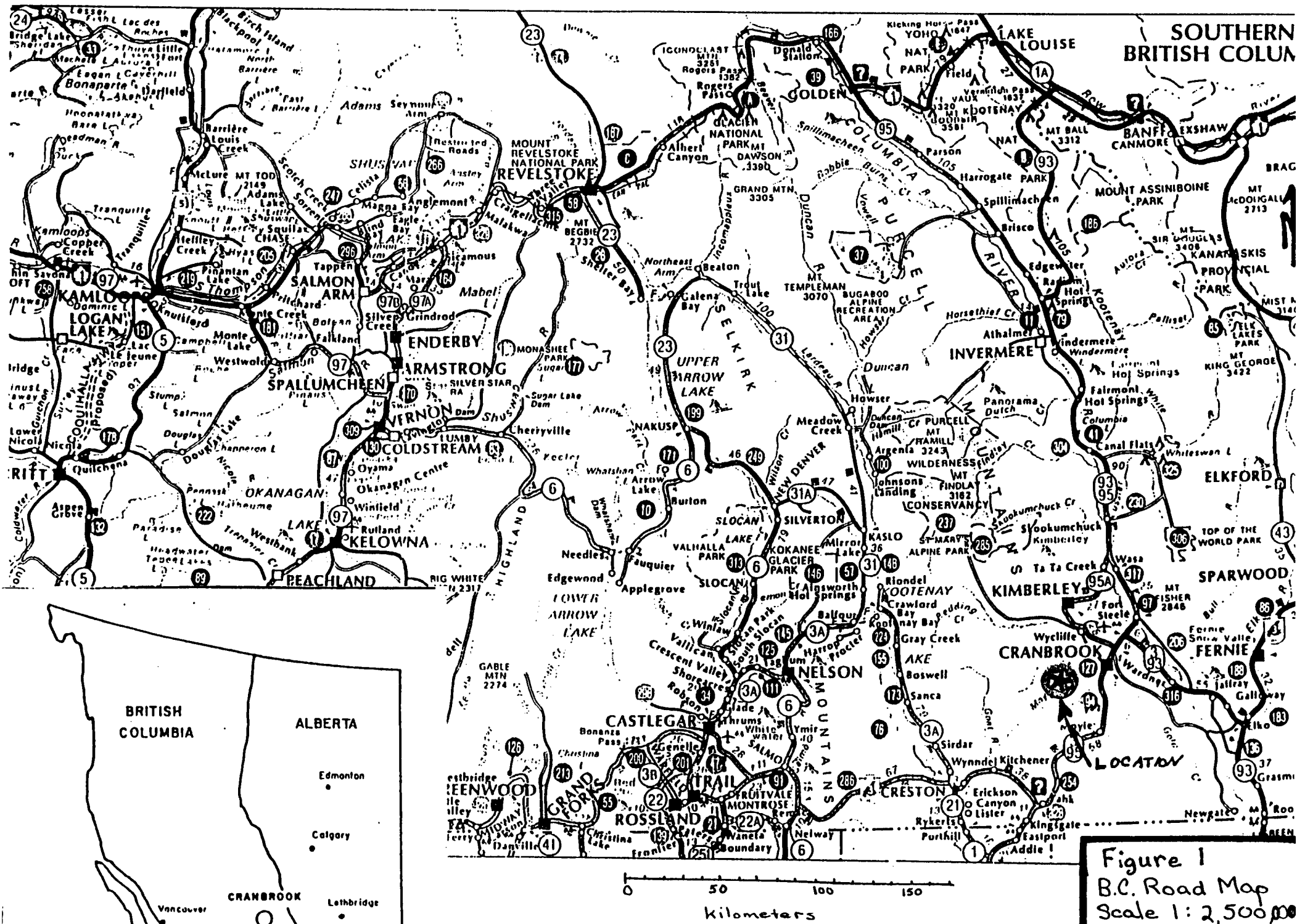
**AUTHOUR'S QUALIFICATIONS**

I, Frank O'Grady, address Box 56, Kimberley, B.C.,  
604-427-5670, hereby certify that:

- 1) I am a graduate of the University of British Columbia,  
B.SC. Geology 1969.
- 2) I am a graduate of the University of Missouri - Rolla  
(Missouri School of Mines), B.S. Mining Engineering 1977.
- 3) I am a registered Professional Engineer in the Province  
of British Columbia since 1978.
- 4) I have practiced my profession as a Geologist since  
1969 and as a Geologist-Mining Engineer since 1977.



*Frank O'Grady*  
Frank O'Grady, P.Eng.  
January 25, 1990



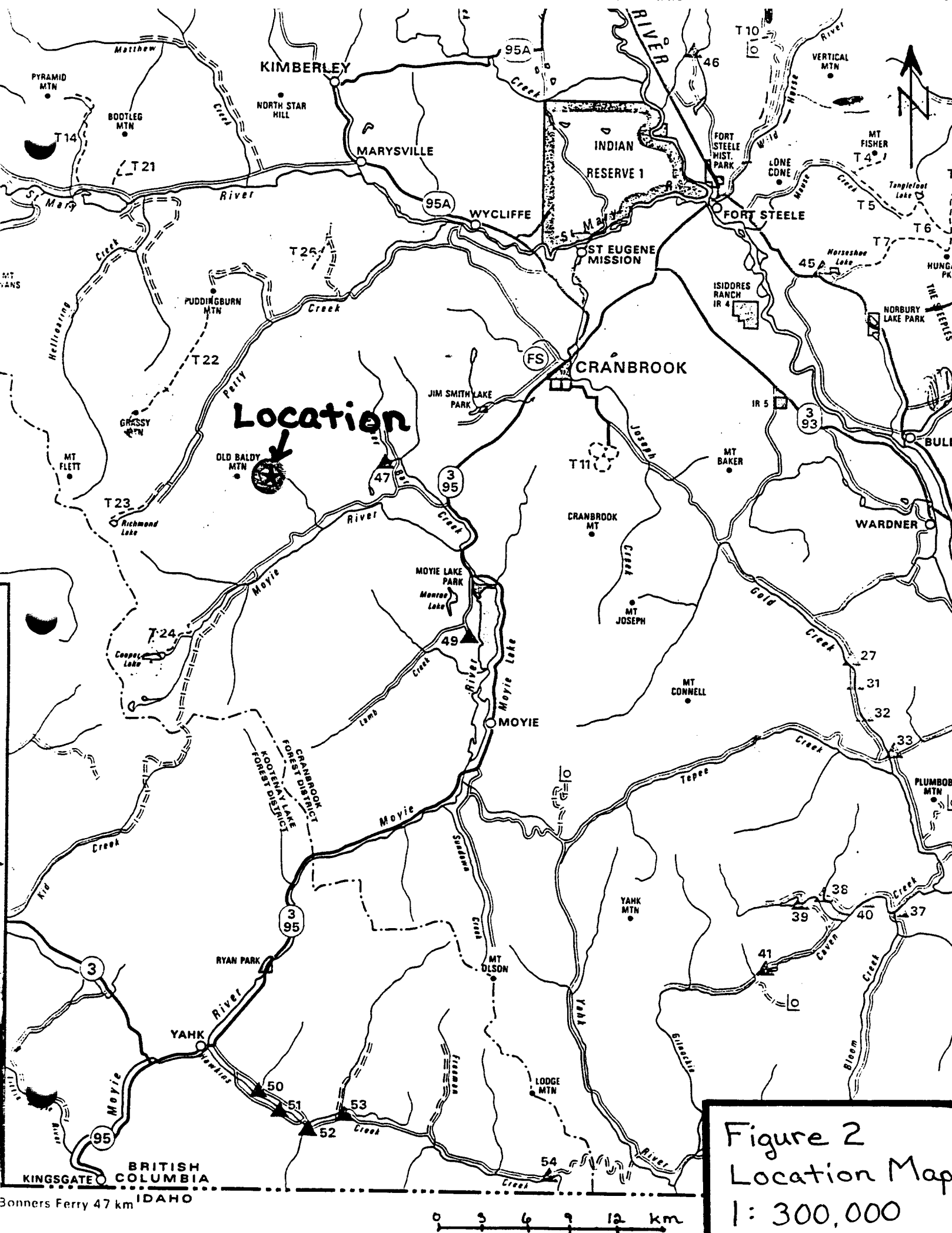
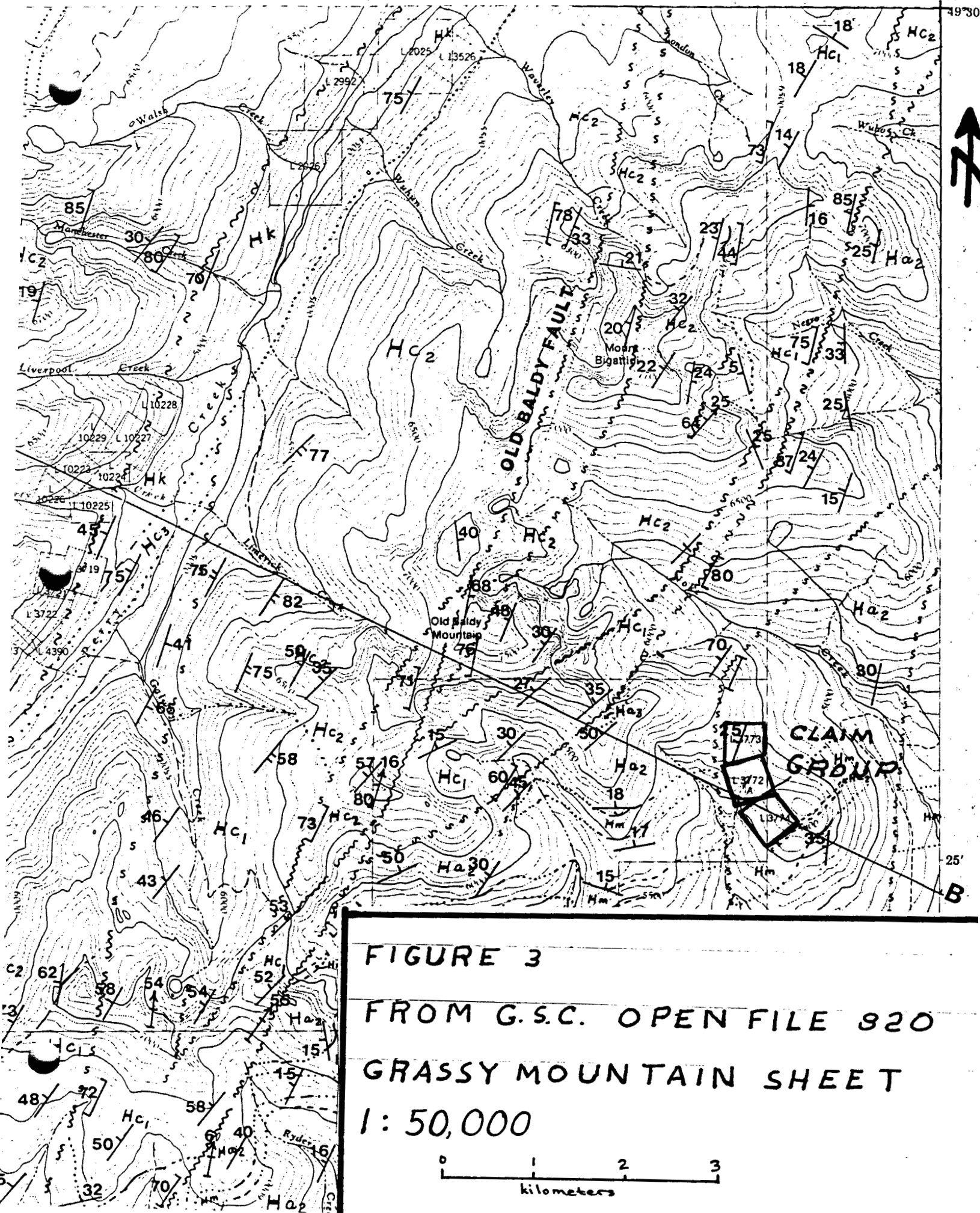


Figure 2  
Location Map  
1: 300,000



PALEOZOIC

Ec

CRANBROOK FORMATION: siliceous, white, purple and quartzite; purple argillite and argillaceous quartzite; gritty quartzite, pebble and cobble conglomerate.

LOWER CAMBRIAN(?)

Ec<sub>1</sub>

CRANBROOK FORMATION(?): Conglomerate, angular to clasts to cobble size derived from Purcell strata Middle Creston and younger rocks.

HELIKIAN

PURCELL SUPERGROUP

Hm

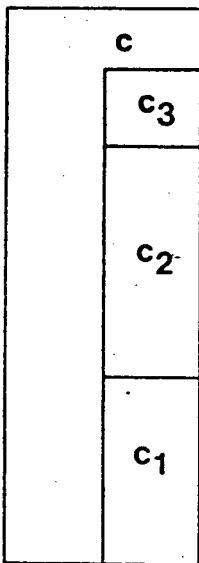
MOYIE INTRUSIONS: Sills and minor dykes of diorite; metamorphic equivalents.

Hd

DUTCH CREEK FORMATION(?): Black and grey and buff grey, thin-bedded argillite and siltstone.

Hk

KITCHENER FORMATION: lower part, green argillite and siltstone with interbeds of buff to brown silty dolomite and dolomitic argillite; upper part, black argillite and buff to brown silty dolomite and dolomite; grey, tuffaceous coloured siltstone; very thin-bedded.

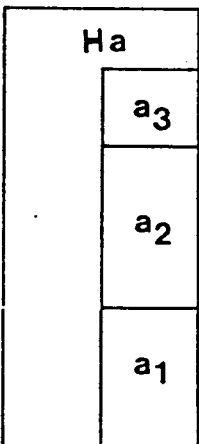


CRESTON FORMATION: undivided

UPPER CRESTON: deep green siltstone, light and dark green, thin to medium bedded argillite and siltstone; purple

MIDDLE CRESTON: grey, blocky siltstone and very fine grained quartzite in beds to 30 cm or more, commonly ripple marked, and commonly purple lined or mottled; black and deep purple argillite and thin-bedded siltstone; medium-grained quartzite commonly associated with mud-chip breccias.

LOWER CRESTON: thin-bedded dark argillite and green siltstone characterized by irregular pinching and stretching, beds, ripple cross-lamination, mud-cracks, minor fault fill features; green siltstone with thin interbedded argillite.



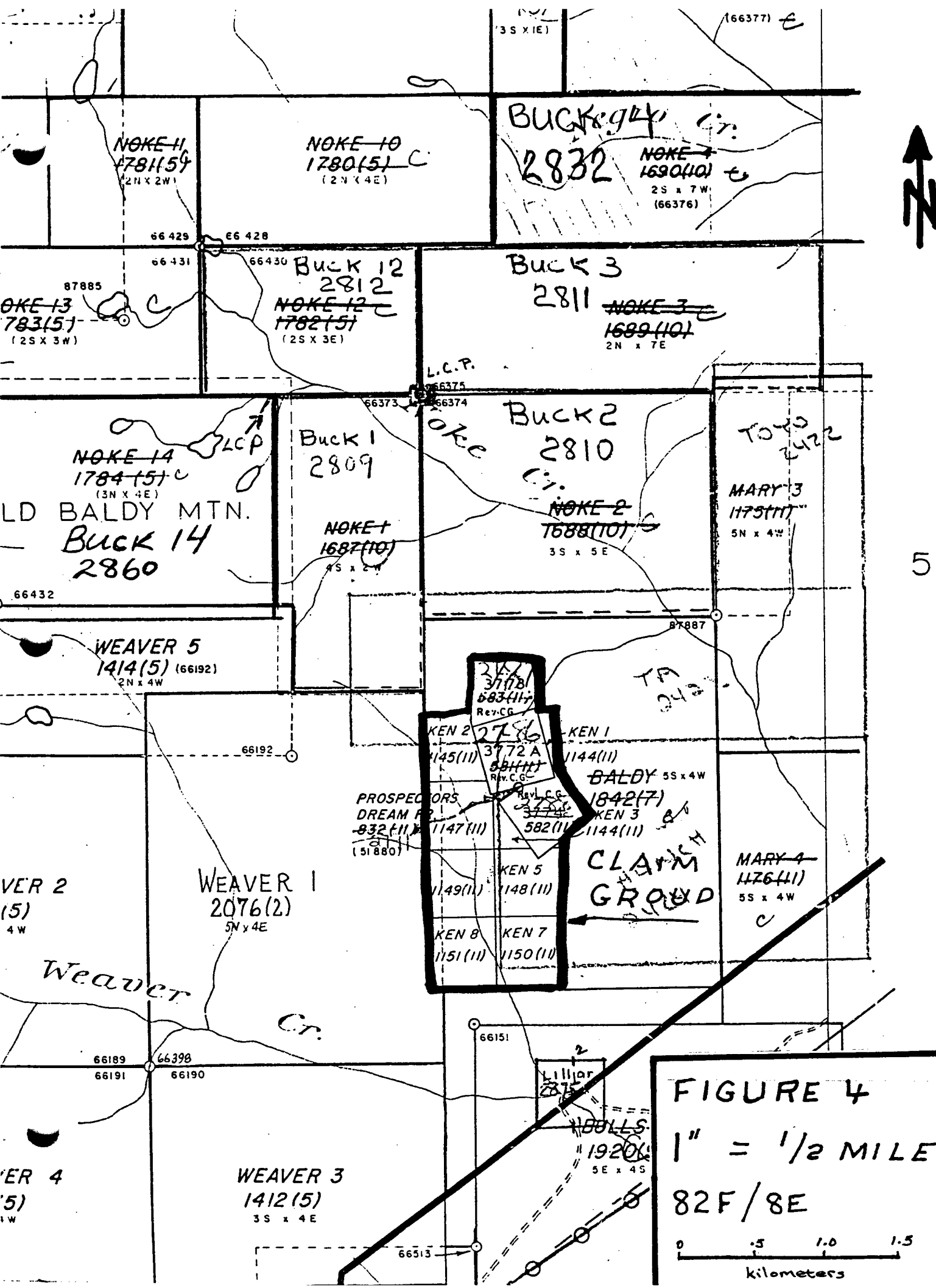
ALDRIDGE FORMATION: undivided

UPPER ALDRIDGE: rusty weathering, black argillite and silty argillite, fine, regular, white laminae of

MIDDLE ALDRIDGE: light grey weathering, grey quartzite and siltstone in beds 10 to 70 cm; interbeds of dark argillite and thin bedded alternating black argillite and grey siltstone.

LOWER ALDRIDGE: rusty weathering, laminated or blocky bedded quartzite, argillite and silty argillite. (Unit not identified in Grassy Mountain map-area)

PROTEROZOIC



**FIGURE 4**  
1" = 1/2 MILE  
82F/8E  
0 .5 1.0 1.5  
kilometers

## APPENDIX 1

16-Jun-89

ASSAY REPORT  
LUPIN

File No.: 626-①  
 Type : CHIP  
 Project : E.B.M.

SAMPLE NUMBER	Au gms/tonne	Ag gms/tonne	Au oz/ton	Ag oz/ton
59747	46.01	TO FOLLOW	1.342	
48	28.97		0.845	
49	72.99	TO FOLLOW	2.129	
50	1.13		0.033	
51	0.75		0.022	
52	0.72		0.021	
53	37.37	TO FOLLOW	1.090	

59747	SOUTH SHAFT GRAB SAMPLE	PROSPECTOR'S DREAM.
48	NORTH SHAFT GRAB SAMPLE	PROSPECTOR'S DREAM
49	NORTH DECLINE GRAB SAMPLE	OLD ABE
50	SOUTH DECLINE GRAB SAMPLE	OLD ABE
51	LUCCY QUARTZ FLAT	PROSPECTOR'S DREAM
52	DIORITE FROM NORTH OUTLINE	OLD ABE
53	HAND TRENCH WEST SIDE	PROSPECTOR'S DREAM.



To the west of Weaver Creek and at the base of the hills forming the divide between it and Perry Creek, quite a number of mineral locations have been made and a considerable amount of work done. The claim best known and most developed is the *Prospector's Dream*, around which are grouped the *Old Abe*, *Last Chance*, *Annie*, *Ben d'Or*, *Parker*, *Lennie*, and the *Pauper's Dream Fraction*. How these claims lay I could not exactly determine, so much restaking had been done, as many as twelve posts being found within a radius of as many feet, and nothing short of an actual survey would untangle the claims. The same general conditions, however, apply to each, and I was able to identify certain works as belonging to certain of the claims.

Owned by J. C. Green *et al*, Fort Steele. The country rock, seemingly, is entirely of igneous origin, probably a syenite or diorite. A quartz vein has been exposed, outcropping nearly horizontally along the hillside, and dipping into the hill N. 30° E. at an angle of 15°. This has been developed by a 20-foot open cut leading to a 10-foot inclined tunnel, both on the vein.

In the open cut the quartz was very much broken, but nearer the mouth of the tunnel the vein was more solid and showed a width of 5 feet of solid quartz. Following the tunnel down, the width of quartz seems to gradually diminish, until at 40 feet in, the vein has only a width of some 6 inches. About 15 tons of quartz, of a rusty nature, was piled on the dump, which is said to run \$10.00 in gold to the ton. The vein-matter will show free gold in the pan almost anywhere, but not indicating high values. The apparent pinching out of the vein in this one tunnel has discouraged for a while, deeper prospecting and the continuity of the vein to the dip remains to be proven.

Whether the gold obtained is the result of the weathering of iron sulphides carrying gold, or whether it will continue to a depth as free gold, has not yet been determined.

I am informed that one or more shafts have been sunk on this property on another vein, but these shafts I was unable to find, being filled, doubtless, with water. In these the vein showing is said to be nearly vertical and to carry a width of some 5 feet of quartz with gold values.

*Old Abe*, owned by Steve Young *et al*, of Fort Steele, is practically an extension of the claim just mentioned.

Located by Nitzel and Johnson, is supposed to lie between *Old Abe* and the *Prospector's Dream*, some 100 feet east of the workings on the latter. The area of this fraction is uncertain, until the prior claims have been surveyed. There has been some work done on the property, consisting of an open cut and two tunnels, 10 and 8 feet respectively. The fraction was evidently located to catch that portion of the *Prospector's Dream* lead which may not be covered by the main claims.

The *Last Chance*, owned by Wm. Haupt *et al*; *War Eagle*, Hy. Kershaw *et al*; *Annie*, Wm. Thompson *et al*; *Ben d'Or*, J. C. Green *et al*; *Parker*, Gus Theiss, and *Lennie*, J. S. Parker, all of Fort Steele, are all locations in the same vicinity, but with only slight development work done on them that I could find. The limits of these claims I was unable to distinguish without a survey, in the absence of the owners to point out the true lines.

