

LOG NO: 0202	NO.
ACTION:	
FILE NO:	

**ASSESSMENT REPORT**

**BRISTOL GOLD PROJECT**

**SOIL GEOCHEMICAL PROGRAM  
UNDERTAKEN ON BRISTOL NO. 13 and 15-18 CROWN GRANTS**

**Lillooet Mining Division  
NTS 92 J/15E  
Latitude 50.80° Longitude 122.53°**

MINISTRY OF ENERGY, MINES AND PETROLEUM RESOURCES	
Rec'd	AS.
	JAN 31 1990
SUBJECT	_____
FILE	_____
VANCOUVER, B.C.	

**Claim Owner and Operator  
Westmin Mines Limited**

Report By  
Ron W. Lane  
Project Geologist  
Westmin Mines Limited

January 20, 1990  
S90-42

**GEOLOGICAL BRANCH  
ASSESSMENT REPORT**

**19,622**

**TABLE OF CONTENTS**

I.	INTRODUCTION .....	1
	A. Location, Access, Topography .....	1
	B. Exploration Target .....	1
	C. History .....	1
	D. Tenure .....	2
II.	GEOLOGY .....	3
III.	SOIL GEOCHEMISTRY .....	3
	A. Work Done .....	3
	B. Results .....	4
IV.	CONCLUSIONS AND RECOMMENDATIONS .....	4
V.	EXPENDITURES .....	4
VI.	STATEMENT OF QUALIFICATIONS .....	4
VII.	APPENDIX .....	5
	A. Analytical Procedures and Values .....	5
VIII.	ATTACHMENTS .....	6
	Figure 1 Regional Location Map - Bristol Gold Project, scale 1:1,000,000	
	Figure 2 Claim Map - Bristol Gold Project, scale 1:50,000	
	Figure 3 Bristol Crown Grants 13 and 15-18, Soil Geochemistry - Gold, scale 1:5,000	
	Figure 4 Bristol Crown Grants 13 and 15-18, Soil Geochemistry - Arsenic, scale 1:5,000	
	Figure 5 Bristol Crown Grants 13 and 15-18, Soil Geochemistry - Sample Numbers, scale 1:5,000	

## **I. INTRODUCTION**

### **A. Location, Access, Topography**

The Bristol Gold property is situated in the Lillooet Mining division of British Columbia, approximately 175 kms. NNE of Vancouver and 20 kms. ENE of the Bralorne-Pioneer Gold Mine. The property straddles Tommy Creek, which flows south into Carpenter Lake. The northern boundary of the property approximately coincides with the south shore of Carpenter Lake.

Access to the property is via the all-weather Lillooet-Goldbridge gravel road to the north shore of Carpenter Lake (at Km 75), and then across Carpenter Lake by boat or barge. The former Bristol workings and the 1988 Westmin exploration camp were accessed by a 4.5 km. long 4X4 road, which begins on the south shore of Carpenter Lake and travels south up the west side of Tommy Creek. The road requires annual cat maintenance to remain passable. Barging across Carpenter Lake is restricted during spring and early summer by low water levels and numerous protruding stumps. Carpenter Lake is a B.C. Hydro storage dam.

The Bristol mine workings occur in moderately rugged terrain along Tommy Creek, at an elevation of approximately 1173m (3,850 feet). Nearby peaks reach 2438m (8,000 feet). Slopes are commonly steep, and dip 30° - 40°. Tommy Creek valley is unusually wet for the Lillooet area, and supports a mature stand of cedar and fir. The area is relatively snow-free from mid May to mid October. Avalanches could constitute a winter road hazard.

### **B. Exploration Target**

Exploration target is a Bralorne-Pioneer style gold (silver) deposit, occurring as zones of high grade gold within broad shear zones containing low to moderate grade mineralization.

### **C. History**

#### 1936 - 1940

- Bristol Crown Grants were staked by Bristol Mines Ltd.

#### 1936 - 1941

- Development of #1 and #2 levels and a short winze below #2 level.

#### 1942

- Development of #3 level.
- Operations ceased due to war time difficulties and apparent lack of high grade below #3 level.

#### 1946

- 157 meters of drifting and crosscutting, and a raise to #2 level was completed.

#### 1947

- 2750 meters underground drill program from #3 level was completed.

1949

- cessation or work.

1973

- property examination and summary report for Camero Resources by A.P. Fawley.

1978

- property examination and summary report for Camero Resources by A. P. Fawley.

1980 - 1981

- Bristol Crown Grants optioned from Columbia Capital Co. Ltd. by 20th Century Energy Corporation.
- property evaluation and report for 20th Century Energy Corporation by E.A. Noel and Associates.
- soil sampling, minor geological mapping, and a 4 hole diamond drill program was completed. Drill program was halted midstream due to financial problems.
- levels #2 and #3 were found to be in good condition, #3 level was rehabilitated.
- mine access road was re-constructed.

1984

- 20th Century Energy Corp. transferred ownership of Bristol Crown Grants back to Columbia Capital Company Ltd.

1988

- Westmin Resources obtained option to purchase Bristol Crown Grants from Columbia Capital Co. Ltd.
- Option agreement on Bristol Gold property between Westmin Resources and Genco Industries Ltd. signed on May 5, 1988.
- exploration program consisting of extensive soil geochemical sampling, stream geochemical sampling, underground and surface geological mapping and sampling, and surface diamond drilling (17 holes - 2499.45 m).

**D. Tenure**

The Bristol Gold property consists of Bristol claims 1-10 (147 units) and 19 Crown Granted claims wholly owned by Westmin Resources Limited. Columbia Capital Co. Ltd. retains an NSR on the Crown Grants and a peripheral area.

<b>Claim Name</b>	<b>Record No.</b>	<b>Number of Units</b>	<b>Current Expiry Date</b>	<b>New Expiry Date Re: This Report</b>
BRISTOL 1	3924	15	Dec. 31, 1988	Dec. 31, 1991
BRISTOL 2	3925	18	"	"
BRISTOL 3	3926	3	"	"
BRISTOL 4	3927	12	"	"
BRISTOL 5	3928	16	"	"
BRISTOL 6	4071	15	July 29, 1989	July 29, 1992
BRISTOL 7	4072	20	"	"
BRISTOL 8	4073	16	"	"
BRISTOL 9	4167	16	Nov. 4, 1989	Nov. 4, 1991
BRISTOL 10	4168	<u>16</u>	"	"
		147		

Claim Name	Lot No.	Number of Hectares	Due Date of Tax
BRISTOL No. 1 CG	L7642	13.34	July 1, 1989
BRISTOL No. 2 CG	L7643	17.08	"
BRISTOL No. 3 CG	L7644	10.40	"
BRISTOL No. 4 CG	L7645	17.22	"
BRISTOL No. 5 CG	L7327	16.56	"
BRISTOL No. 6 CG	L7328	20.90	"
BRISTOL No. 7 CG	L7329	13.71	"
BRISTOL No. 8 CG	L7330	13.61	"
BRISTOL No. 9 CG	L7331	13.20	"
BRISTOL No. 10CG	L7332	16.23	"
BRISTOL FR CG	L7333	2.71	"
BRISTOL No. 13CG	L6562	19.23	"
BRISTOL No. 14CG	L6563	19.23	"
BRISTOL No. 15CG	L6564	15.05	"
BRISTOL No. 16CG	L6565	15.05	"
BRISTOL No. 17CG	L6566	17.90	"
BRISTOL No. 18CG	L6567	13.21	"
DAVID No. 3 CG	L7646	16.68	"
DAVID No. 4 CG	L7647	<u>20.90</u>	"
		292.21	

## II. GEOLOGY

The Bristol Gold property is predominantly underlain by Early Permian Bridge River (Fergusson) Group rocks. They consist of massive to pillowed basalt, basaltic tuff, laminated to thin bedded chert, cherty argillite and argillite, and minor limestone. The stratigraphy generally strikes NNE and dips steeply west although some large scale folding along NW trending axis is also evident. In the vicinity of the Bristol workings the sequence is intruded by a Cretaceous age (?) 1.0 km long granodiorite pluton centered 450m east of Tommy Creek, a 1.0 km. diameter Late Cretaceous age porphyritic granite pluton centered 1000m west of Tommy Creek, and a minor amount of felsic, mafic and ultramafic dykes.

Gold mineralization occurring in the vicinity of the Bristol workings is hosted by 5 shear zones (East, H/W, Main, F/W and Tommy Creek), which are variably altered to quartz-carbonate-clay-pyrite-pyrrhotite-limonite. The shear zones have relatively good strike and down-dip continuity, trend 032°- 037° (parallel to Tommy Creek) and dip steeply to the east. The shears usually carry low to moderate grade gold values, and in addition, sometimes carry high grade gold in steeply plunging structurally prepared dilational zones.

## III. SOIL GEOCHEMISTRY

### A. Work Done

A total of 183 B-horizon soil samples were taken every 25 or 50m along grid lines spaced 100m apart, at a depth of 10-30 cms. The area sampled averaged 500m wide by 1250m long.

Samples were analyzed by Chemex Labs Ltd. of North Vancouver, for Au (by Fire Assay - Atomic absorption finish of a 30 gram sample) and As (HNO<sub>3</sub> - aqua regia digestion). Sample positions are plotted on figure 5.

## **B. Results**

Analytical results for Au and As are presented on figures 3 and 4. Anomalous thresholds of 25 ppb Au and 50 ppm As were established from soil sampling undertaken on the Bristol Gold property in 1988.

A few weakly anomalous Au values ranging from 25 to 70 ppb were defined, mainly on lines 100S, 200S and 800S

A few weakly to moderately anomalous As values, generally coincident with the anomalous Au values, were defined on lines 100S, 200S and 400S.

## **IV. CONCLUSIONS AND RECOMMENDATIONS**

Soil geochemical response over the grid was generally unencouraging, however the weakly anomalous Au and As values defined warrant follow-up on a low priority basis. In particular, the anomalous areas should be prospected and lines 100S, 200S and 400S extended 500m to the west, and line 900S extended 500m to the east.

## **V. EXPENDITURES**

Contractor charges (Alionis Geological Services)

- labor: 10 man days at \$185.00/day	\$1,850.00
- truck rental and fuel	522.40
- boat and motor rental	250.00
- accommodation	259.20
- food	281.20
- supplies	115.50


Analytical charges

2,300.00  
\$5,578.30

## **VI. STATEMENT OF QUALIFICATIONS**

I, Ron Lane, of 7673 Sutton Place, North Delta, B.C., graduated in 1971 from the University of Alberta, Edmonton, Alberta, with a Bachelor of Science - majoring in Geology.

Since graduation, I have worked on a continuous basis as an exploration geologist in British Columbia, Yukon Territory, Northwest Territories, Alberta, Southern Africa and Italy.



Ron Lane  
Project Geologist  
Westmin Resources Limited

**VII. APPENDIX**

**A. Analytical Procedures and Values**



# Chemex Labs Ltd.

Analytical Chemists \* Geochemists \* Registered Assayers  
212 BROOKSBANK AVE., NORTH VANCOUVER,  
BRITISH COLUMBIA, CANADA V7J-2C1  
PHONE (604) 984-0221

To: WESTMIN MINES LTD.

P.O. Box 49066, The Bentall Centre  
VANCOUVER, BC  
V7X 1C4

A8929351

Comments: ATTN: PAUL LAHTKA

## CERTIFICATE A8929351

WESTMIN MINES LTD  
PROJECT : BRISTOL  
P O # : NONE

Samples submitted to our lab in Vancouver, BC.  
This report was printed on 6-NOV-89.

## ANALYTICAL PROCEDURES

CHEMEX CODE	NUMBER SAMPLES	DESCRIPTION	METHOD	DETECTION LIMIT	UPPER LIMIT
983	183	Au ppb: Fuse 30 g sample	FA-AAS	5	10000
13	183	As ppm: HNO <sub>3</sub> -aqua regia digest	AAS-HYDRIDE/EDL	1	10000

## SAMPLE PREPARATION

CHEMEX CODE	NUMBER SAMPLES	DESCRIPTION
201	137	Dry, sieve -80 mesh: soil, sed.
203	24	Dry, sieve -35 mesh and ring
217	22	Geochem: Ring only. no crush/split





# Chemex Labs Ltd.

Analytical Chemists \* Geochemists \* Registered Assayers

212 BROOKSBANK AVE. NORTH VANCOUVER,  
BRITISH COLUMBIA, CANADA V7J-2C1

PHONE (604) 984-0221

To **CESTIMIN MINES LTD.**

P.O. Box 49066, The Bentall Centre  
VANCOUVER, BC  
V7X 1C4

Project : BRISTOL

Comments : ATTN: PAUL LAHTKA

Page No. **1**

Tot. Pages: 5

Date : 6-NOV-89

Invoice # : I-8929351

P.O. # : NONE

## CERTIFICATE OF ANALYSIS A8929351

SAMPLE DESCRIPTION	PREP CODE	Au ppb FA+AA	As ppm						
89.007	217	---	30	150					
89.008	217	---	20	95					
89.009	217	---	30	200					
89.010	201	---	< 5	23					
89.019	201	---	< 5	19					
89.020	201	---	30	110					
89.021	217	---	30	120					
89.022	217	---	< 5	15					
89.023	217	---	< 5	12					
89.024	201	---	< 5	5					
89.048	217	---	20	90					
89.049	201	---	5	55					
89.050	217	---	25	100					
89.051	201	---	< 5	23					
89.052	201	---	< 5	4					
89.053	217	---	< 5	3					
89.054	201	---	< 5	4					
89.055	201	---	< 5	6					
89.056	201	---	< 5	3					
89.057	201	---	< 5	3					
89.058	201	---	< 5	3					
89.065	201	---	< 5	51					
89.066	201	---	< 5	48					
89.067	217	---	< 5	7					
89.068	201	---	< 5	7					
89.069	201	---	< 5	4					
89.070	201	---	< 5	4					
89.071	201	---	< 5	4					
89.072	201	---	< 5	2					
89.073	201	---	< 5	5					
89.074	201	---	< 5	2					
89.075	201	---	< 5	2					
89.076	201	---	< 5	2					
89.077	201	---	< 5	5					
89.078	217	---	< 5	5					
89.079	201	---	< 5	6					
89.080	201	---	< 5	2					
89.081	201	---	< 5	3					
89.082	201	---	< 5	1					
89.083	201	---	< 5	3					

*Paul Lahtka*

CERTIFICATION :



# Chemex Labs Ltd.

Analytical Chemists \* Geochemists \* Registered Assayers

212 BROOKSBANK AVE. NORTH VANCOUVER  
BRITISH COLUMBIA CANADA V7J-2C1

PHONE (604) 984-0221

To **STIMIN MINES LTD.**

P.O. Box 49066, The Bentall Centre  
VANCOUVER, BC  
V7X 1C4

Project : BRISTOL

Comments: ATTN: PAUL LAHTKA

Page No.   
Tot. Pages:   
Date : 6-NOV-89  
Invoice # : I-8929351  
P.O. # : NONE

## CERTIFICATE OF ANALYSIS A8929351

SAMPLE DESCRIPTION	PREP CODE	Au ppb FA+AA	As ppm						
89.084	201	<	5	5					
89.085	201	<	5	12					
89.086	217	<	5	4					
89.087	201	<	5	4					
89.088	201	<	5	30					
89.089	201	<	5	11					
89.090	201	<	5	27					
89.091	217	<	5	7					
89.092	201	<	5	6					
89.093	217	<	5	7					
89.094	201	<	5	35					
89.095	201	<	5	17					
89.096	201	<	5	9					
89.097	201	<	5	14					
89.098	201	<	5	14					
89.099	201	<	5	15					
89.100	201	<	5	15					
89.101	201	<	5	11					
89.102	201	<	5	14					
89.103	201	<	5	3					
89.104	201	<	5	5					
89.105	201	<	5	2					
89.106	201	<	5	3					
89.107	201	<	5	11					
89.108	201	<	5	7					
89.109	201	<	10	19					
89.110	201	<	5	1					
89.111	201	<	5	7					
89.112	217	<	5	9					
89.113	201	<	5	39					
89.114	201	<	5	16					
89.115	201	<	10	14					
89.116	201	<	5	9					
89.117	217	<	5	6					
89.118	201	<	5	6					
89.119	217	<	5	4					
89.121	201	<	5	12					
89.122	201	<	5	9					
89.124	203	<	5	7					
89.125	217	<	5	4					

*Paul Lahtka*

CERTIFICATION :



# Chemex Labs Ltd.

Analytical Chemists \* Geochemists \* Registered Assayers

212 BROOKSBANK AVE. NORTH VANCOUVER,  
BRITISH COLUMBIA CANADA V7L 1C4

PHONE (604) 984-0221

To ESTMIN MINES LTD.

P.O. Box 49066, The Bentall Centre  
VANCOUVER, BC  
V7X 1C4

Project BRISTOL  
PAUL LAHTKA

Page No.   
Tot. Pages.   
Date : 6-NOV-89  
Invoice # : I-8929351  
P.O. # : NONE

## CERTIFICATE OF ANALYSIS A8929351

SAMPLE DESCRIPTION	PREP CODE		Au ppb	As ppm						
			FA+AA							
89.126	203	---	<< 5	9						
89.127	201	---	<< 5	9						
89.128	201	---	<< 5	5						
89.129	203	---	<< 5	5						
89.130	203	---	<< 5	6						
89.131	217	---	<< 5	4						
89.132	203	---	<< 5	3						
89.133	203	---	<< 5	4						
89.134	203	---	<< 5	4						
89.135	203	---	<< 5	4						
89.136	203	---	<< 5	5						
89.137	203	---	<< 5	7						
89.138	203	---	<< 5	2						
89.139	201	---	<< 5	2						
89.140	203	---	<< 5	3						
89.141	203	---	<< 5	3						
89.142	203	---	<< 5	4						
89.143	201	---	<< 5	2						
89.144	201	---	<< 5	1						
89.145	203	---	10	2						
89.146	203	---	<< 5	2						
89.147	203	---	<< 5	11						
89.148	203	---	<< 5	7						
89.149	203	---	<< 5	9						
89.150	203	---	<< 5	6						
89.151	217	---	< 5	3						
89.152	217	---	< 5	9						
89.153	203	---	<< 5	10						
89.154	201	---	<< 5	2						
89.155	203	---	<< 5	6						
89.156	201	---	<< 5	2						
89.157	201	---	<< 5	4						
89.158	201	---	<< 5	4						
89.159	201	---	<< 5	4						
89.160	201	---	< 5	9						
89.161	201	---	<< 5	4						
89.162	201	---	<< 5	6						
89.163	201	---	25	5						
89.164	201	---	< 5	15						
89.165	201	---	70	4						

CERTIFICATION : Paul Lahtka



# Chemex Labs Ltd.

Analytical Chemists \* Geochemists \* Registered Assayers

212 BROOKSBANK AVE. NORTH VANCOUVER  
BRITISH COLUMBIA, CANADA V7J-2C1

PHONE (604) 984-0221

To **ESTIMIN MINES LTD.**

P.O. Box 49066, The Bentall Centre  
VANCOUVER, BC  
V7X 1C4

Project : BRISTOL

Comments: ATTN: PAUL LAHTKA

Page No. **1**

Tot. Pages: **5**

Date : 6-NOV-89

Invoice # : I-8929351

P.O. # : NONE

## CERTIFICATE OF ANALYSIS A8929351

SAMPLE DESCRIPTION	PREP CODE	Au ppb FA+AA	As ppm
89.166	201 ---	< 5	4
89.167	201 ---	< 5	3
89.168	201 ---	< 5	3
89.169	201 ---	< 5	6
89.170	201 ---	< 5	1
89.171	201 ---	< 5	5
89.172	201 ---	< 5	2
89.173	201 ---	< 5	9
89.174	201 ---	< 5	9
89.175	201 ---	< 5	9
89.176	201 ---	< 20	7
89.177	201 ---	< 5	3
89.178	203 ---	< 5	7
89.179	203 ---	< 5	5
89.180	201 ---	< 5	3
89.181	201 ---	< 5	3
89.182	201 ---	< 5	3
89.183	217 ---	< 5	1
89.184	201 ---	< 5	1
89.185	201 ---	< 5	5
89.186	201 ---	< 5	4
89.187	201 ---	< 5	10
89.188	201 ---	< 5	4
89.189	201 ---	< 5	9
89.190	201 ---	< 5	4
89.191	201 ---	< 5	20
89.192	201 ---	< 5	16
89.193	201 ---	< 5	5
89.194	201 ---	< 5	11
89.195	201 ---	< 5	7
89.196	201 ---	< 5	1
89.197	201 ---	< 5	1
89.198	201 ---	< 5	4
89.199	201 ---	< 5	9
89.200	201 ---	< 5	6
89.201	201 ---	< 5	6
89.202	201 ---	< 5	9
89.203	201 ---	< 5	9
89.204	201 ---	< 5	12
89.205	201 ---	< 5	9

CERTIFICATION :

*Paul Lahtka*



# Chemex Labs Ltd.

Analytical Chemists \* Geochemists \* Registered Assayers  
212 BROOKSBANK AVE. NORTH VANCOUVER  
BRITISH COLUMBIA CANADA V7J-2C1  
PHONE (604) 984-0221

To **BRISTOL MINES LTD.**

P.O. Box 49066, The Bentall Centre  
VANCOUVER, BC  
V7X 1C4

Project : BRISTOL  
Comments: ATTN: PAUL LAHTKA

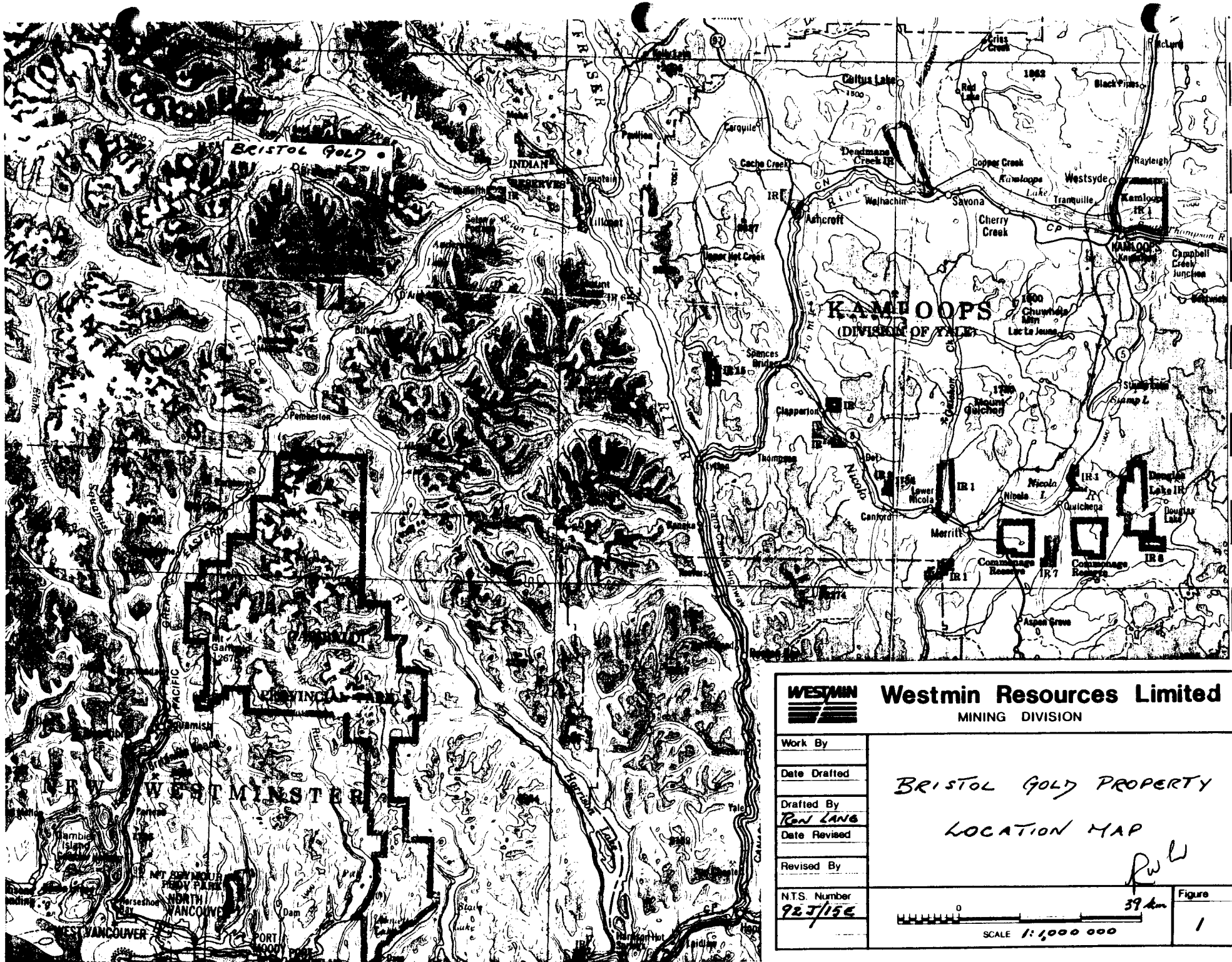
Page No.   
Tot. Pages.   
Date : 6-NOV-89  
Invoice # : I-8929351  
P.O. # : NONE

## CERTIFICATE OF ANALYSIS A8929351

SAMPLE DESCRIPTION	PREP CODE	Au ppb FA+AA	As ppm						
89.206	201	--	<< 5	6					
89.207	201	---	<< 5	16					
89.208	201	---	<< 5	1					
89.209	201	---	<< 5	3					
89.210	201	---	<< 5	20					
89.211	201	---	<< 5	4					
89.212	201	---	<< 5	9					
89.213	201	---	<< 5	11					
89.214	201	---	<< 5	16					
89.215	201	---	<< 5	16					
89.216	201	---	<< 5	11					
89.217	201	---	<< 5	16					
89.218	201	---	<< 5	3					
89.219	201	---	<< 5	2					
89.220	201	---	<< 5	6					
89.221	201	---	<< 5	3					
89.222	201	---	<< 5	3					
89.223	201	---	<< 5	5					
89.224	201	---	<< 5	10					
89.225	201	---	<< 5	4					
89.226	201	---	<< 5	6					
89.227	201	---	<< 5	9					
89.228	201	---	<< 5	33					

CERTIFICATION : Paul Lahtka

**VIII. ATTACHMENTS**



51°

c

d

50°

**WESTMIN** **Westmin Resources Limited**  
MINING DIVISION

Work By

Date Drafted

Drafted By

Date Revised

Revised By

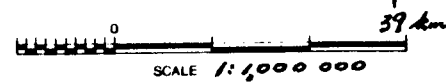
NTS. Number

923/156

*BRISTOL GOLD PROPERTY*

*LOCATION MAP*

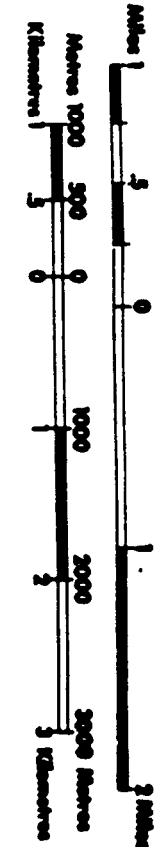
*RWL*



Figure

1

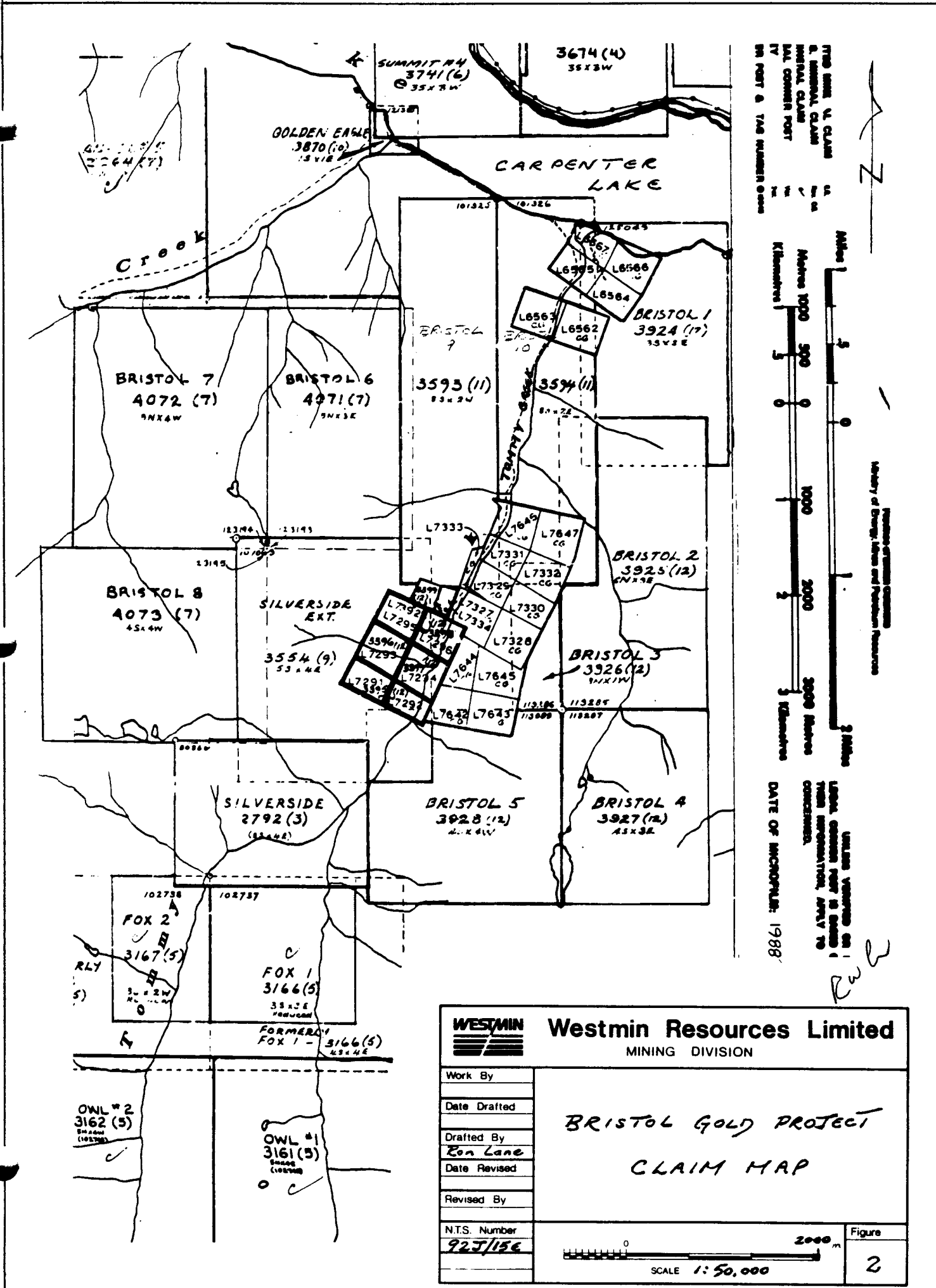
THIS MAP IS CLASSIFIED AS A MINERAL CLAIM UNDER THE MINERAL CLAIM ACT (R.S. 1980, § 17-1-1) BY THE BUREAU OF LAND MANAGEMENT, U.S. DEPARTMENT OF THE INTERIOR, WASHINGTON, D.C.



Department of Energy, Mines and Petroleum Resources

UNLESS OTHERWISE SPECIFIED, ALL CLAIMS SHOWN ON THIS MAP ARE SUBJECT TO THE MINERAL CLAIM ACT (R.S. 1980, § 17-1-1) AND THE MINERAL CLAIM ACT REGULATIONS (S.O. 1980, § 17-1-1). DATE OF MICROFILM: 1988.

*RWR*



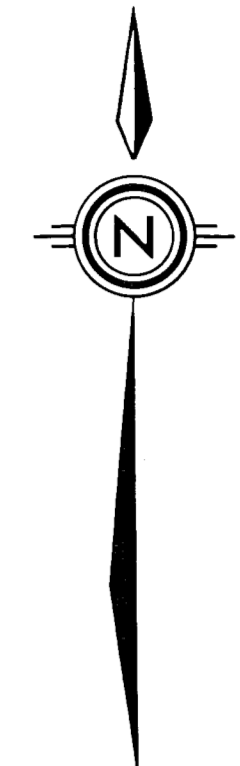
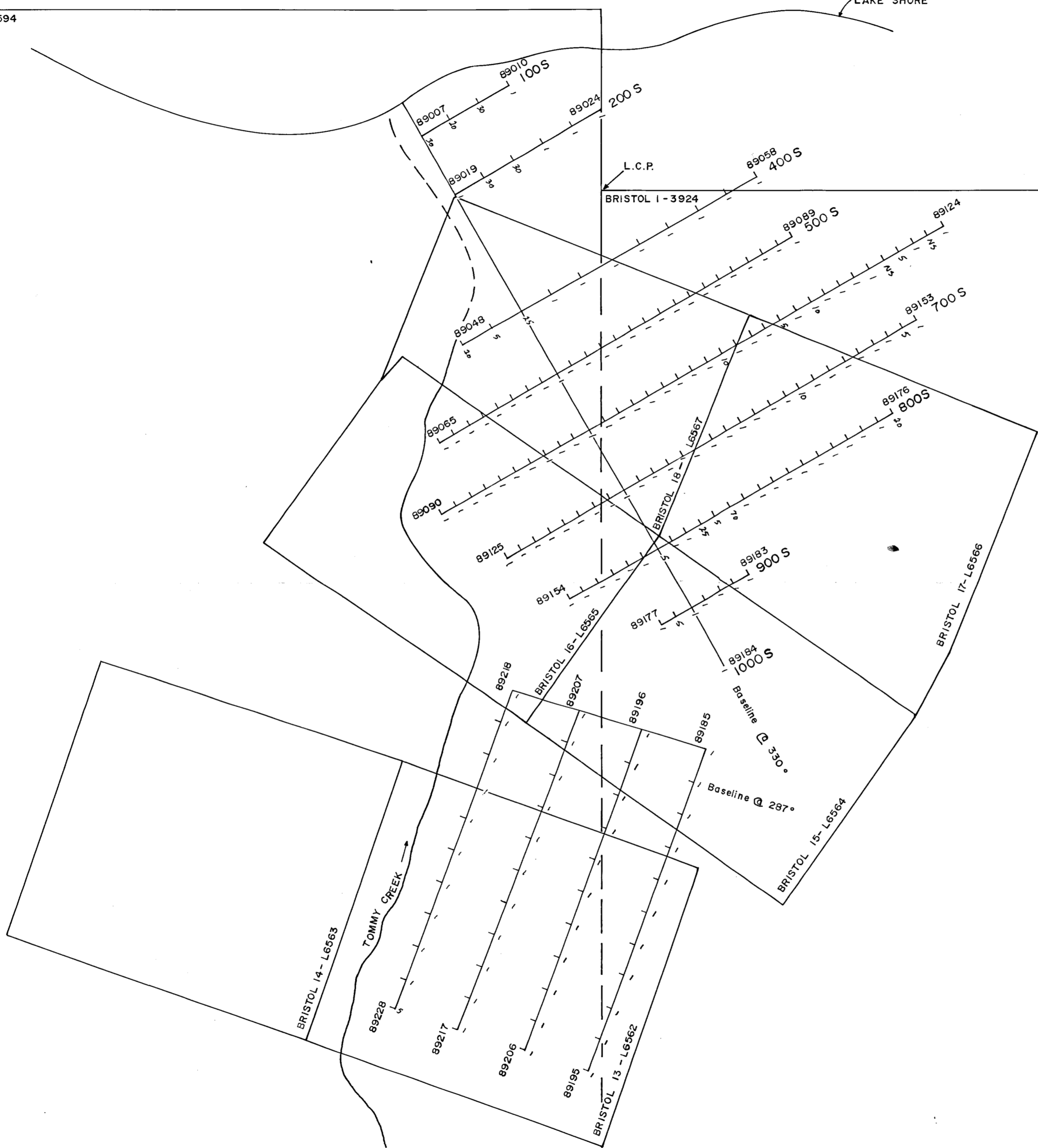
<b>Westmin Resources Limited</b> MINING DIVISION	
Work By Date Drafted Drafted By <i>Don Lane</i> Date Revised Revised By	<p style="text-align: center;"><b>BRISTOL GOLD PROJECT</b></p> <p style="text-align: center;"><b>CLAIM MAP</b></p>
N.T.S. Number <i>923/156</i>	
<p>SCALE 1:50,000</p>	
Figure <p style="font-size: 2em;"><b>2</b></p>	



CARPENTER  
LAKE

L.C.P.  
BRISTOL 9 - 3593 BRISTOL 10 - 3594

LAKE SHORE



**LEGEND**

Soil Geochemical Sampling of B-Horizon  
Anomalous Thresholds:  
Au - 25 ppb

Field Work By:  
Alionis Geological Services  
Vancouver, B.C.

**GEOLOGICAL BRANCH  
ASSESSMENT REPORT**

19,622 *RW*



**Westmin Mines Limited**

Work By	R.W. Lane
Date Drafted	January 1990
Drafted By	F. Heptonstall
Date Revised	
Revised By	
N.T.S. Number	92J/15E

**BRISTOL GOLD PROJECT**  
Bristol Crown Grants 13 and 15-18  
**SOIL GEOCHEMISTRY**  
**GOLD (ppb)**

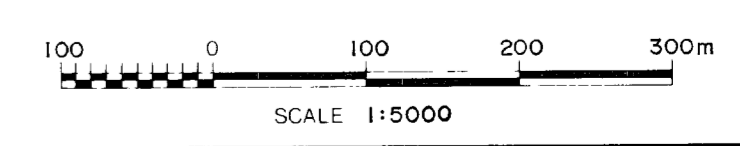
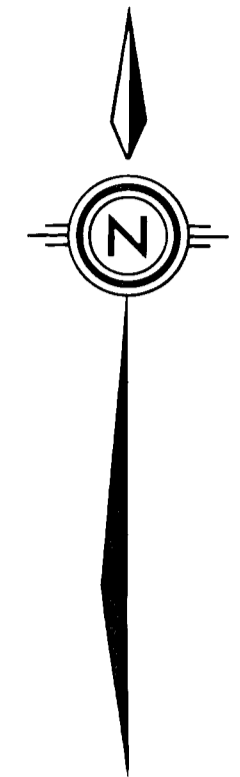
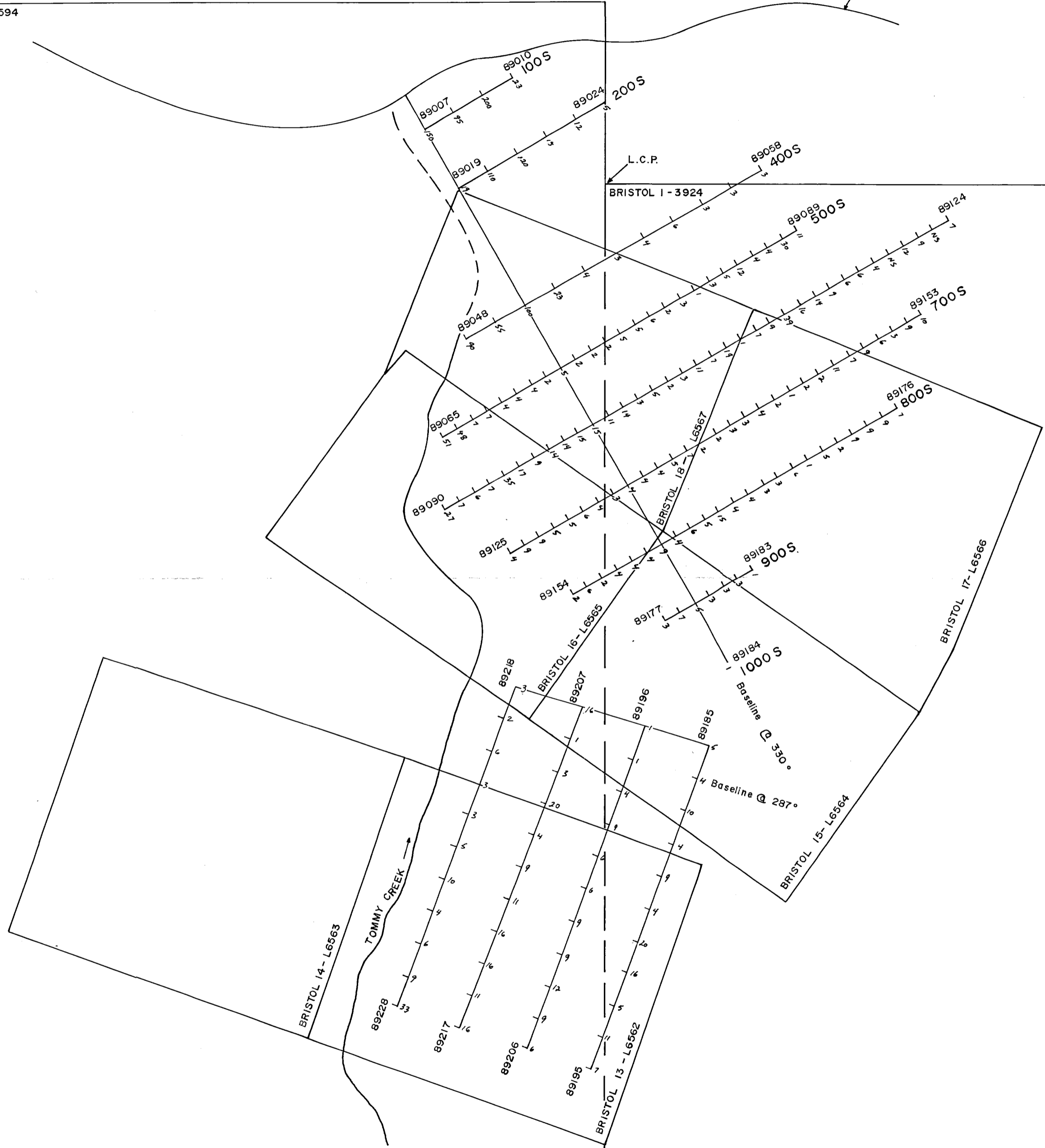


Figure  
**3**

CARPENTER  
LAKE

L.C.P.  
BRISTOL 9-3593 BRISTOL 10-3594

LAKE SHORE




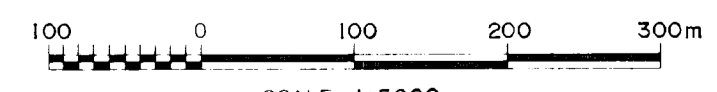
**LEGEND**

Soil Geochemical Sampling of B-Horizon  
Anomalous Thresholds:  
Au - 25 ppb  
As - 50 ppm

Field Work By:

Alonis Geological Services  
Vancouver, B.C.  
**GEOLOGICAL BRANCH  
ASSESSMENT REPORT**

**19,622** *RW*

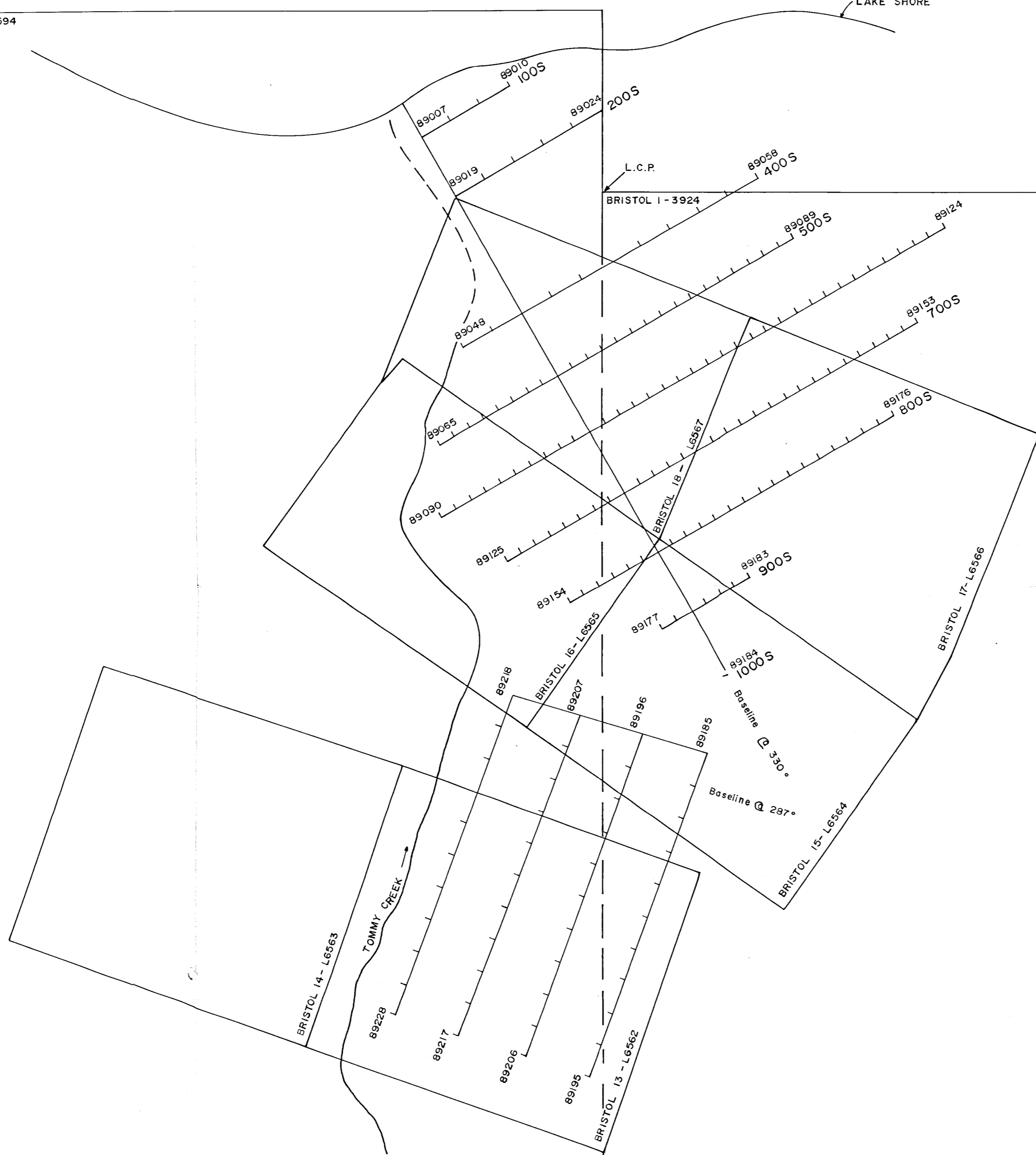
 <b>Westmin Mines Limited</b>	
Work By R.W. Lane Date Drafted January 1990 Drafted By F. Heptonstall Date Revised	<b>BRISTOL GOLD PROJECT</b> Bristol Crown Grants 13 and 15-18 <b>SOIL GEOCHEMISTRY</b> <b>ARSENIC (ppm)</b>
Revised By	Figure <b>4</b>
N.T.S. Number 92J/15E	 SCALE 1:5000

CARPENTER  
LAKE

L.C.P.


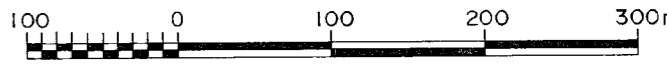
BRISTOL 9-3593 BRISTOL 10-3594

LAKE SHORE



GEOLOGICAL BRANCH  
ASSESSMENT REPORT

19,622 *Rwl*

 <b>Westmin Mines Limited</b>	
Work By R.W. Lane	<b>BRISTOL GOLD PROJECT</b> Bristol Crown Grants 13 and 15-18 <b>SOIL GEOCHEMISTRY</b> <b>SAMPLE NUMBERS</b>
Date Drafted January 1990	
Drafted By F. Heptonstall	
Date Revised	
Revised By	
N.T.S. Number 92J/15E	 SCALE 1:5000
Figure <b>5</b>	