

LEGEND

TERTIARY

5,5a Rhyolite dykes; 5a - pyritic rhyolite

LOWER CRETACEOUS (Nelson Plutonic Suite)

4 Quartz - Feldspar Porphyry

3 Feldspar Porphyry

2,2a Diorite - porphyritic, hornblende phenocrysts;
2a - Granodiorite

LOWER JURASSIC (Elise Volcanics)

1,1a Andesite to Basalt: flows and pyroclastics, pillow
lava, augite porphyry; 1a - agglomerate

SYMBOLS

- Outcrop
- Geological contact (known, approximate)
- Jointing (inclined)
- Foliation (inclined, vertical)
- Banding (inclined)
- Trench
- Sample Location
- Fault
- Chalcopyrite
- Pegmatite

ROCK SAMPLING

Sample Number	Au (ppb)
SB-ST89-2	<5
SB-ST89-3	<5
SB-ST89-4	<5
SB-ST89-5	<5
SB-ST89-6	80
SB-ST89-7	<5
SB-ST89-8	<5
SB-ST89-8A	84
SB-ST89-9	<5
Z-89-519-01	15
Z-89-519-02	23
Z-89-519-03	<5
Z-89-519-04	<5
Z-89-519-05	<5
Z-89-519-06	<5
Z-89-519-07	<5
Z-89-519-08	8
Z-89-519-09	33
Z-89-519-10	68
Z-89-519-11	<5
Z-89-519-12	223
Z-89-519-13	35
Z-89-519-14	8
Z-89-519-15	1405 (0.041 opt)
Z-89-519-16	31
Z-89-519-17	229
Z-89-519-18	<5
Z-89-519-19	7
Z-89-519-20	49
Z-89-519-21	<5

GEOLOGICAL BRANCH
ASSESSMENT REPORT

19,704
PART 2
OF 2

DISCOVERY Consultants

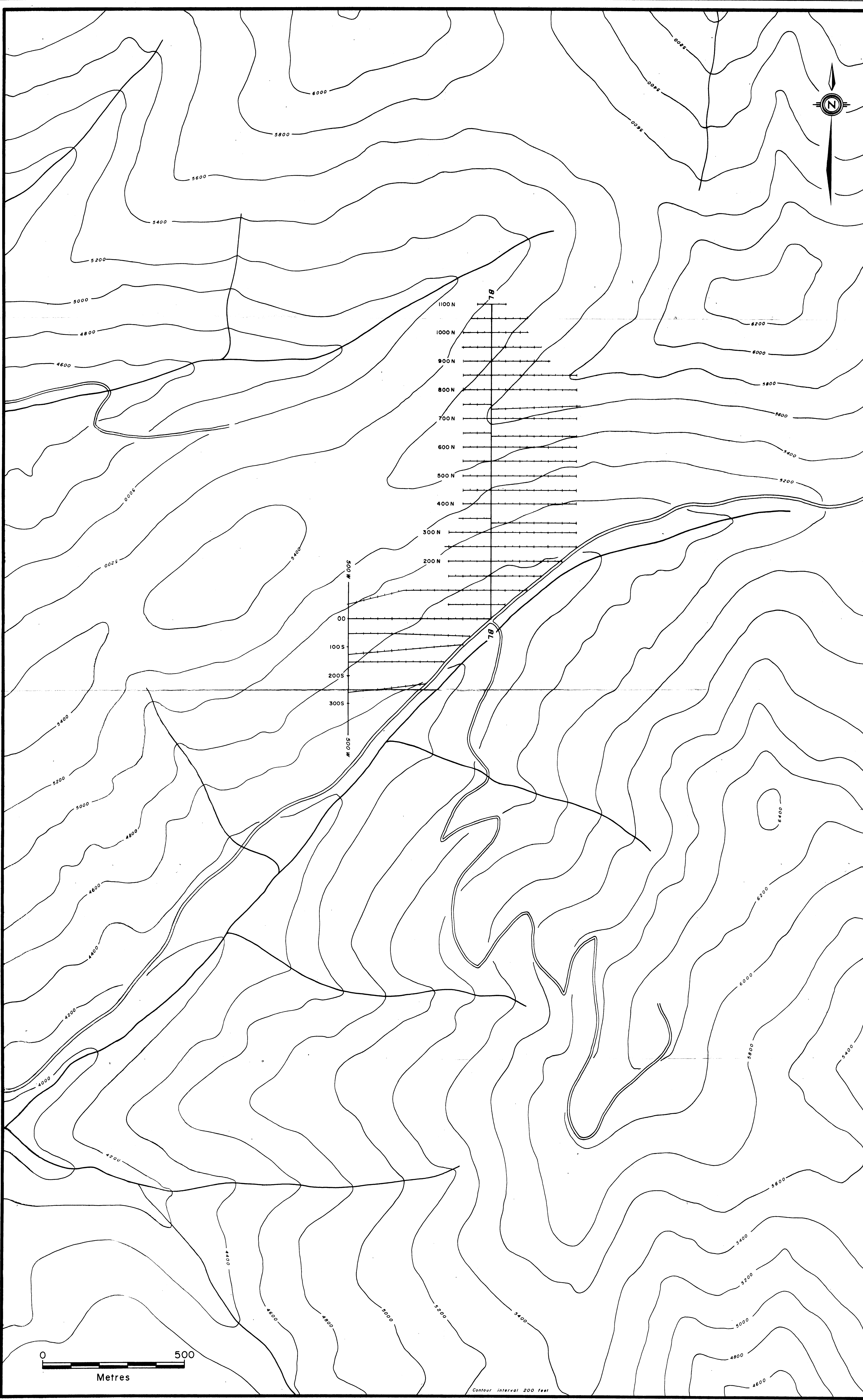
MINNOVA

STEWART PROJECT
GEOLOGY MAP

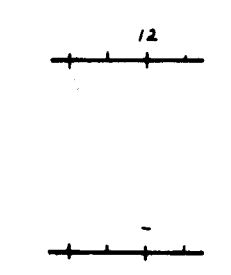
Date: Sept. 28, 1989	Scale: 1:5,000
Project: 519	N.T.S.: 82 F/G
M.D.: Nelson	Figure: 3

0 500
Metres

Contour Interval 200 feet



LEGEND



Soil Contours

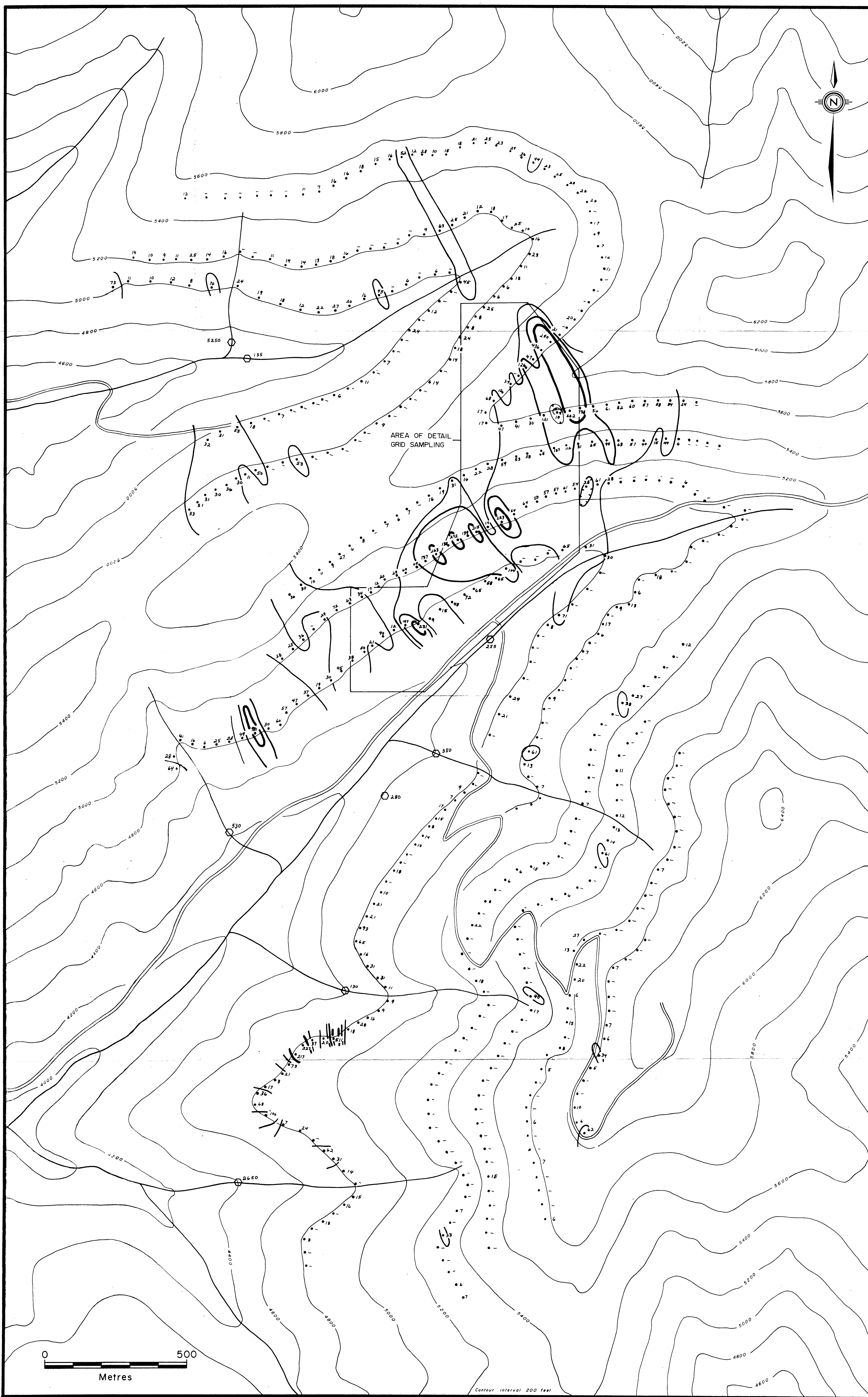
GEOLOGICAL BRANCH
ASSESSMENT REPORT

19,704
PART 2
OF 2

DISCOVERY Consultants	
MINNOVA	
STEWART PROJECT GRID SOIL	
Date: Oct. 4, 1988	Scale: 1:5,000
Project: 519	N.T.S.: 82 F/6
M.D.: Nelson	Figure: 5

DRAWN: OCT 4/1988
REVISED:

Contour interval 200 feet



LEGEND

- 12 ppb Au
 - - less than 5 ppb Au
 - 133 pan concentrate (ppb Au)
- Soil Contours**
- 180 ppb Au
 - 80 ppb Au
 - 30 ppb Au

AREA OF DETAIL
GRID SAMPLING



Contour interval 200 feet

GEOLOGICAL BRANCH
ASSESSMENT REPORT

19,704

PART 2
OF 2

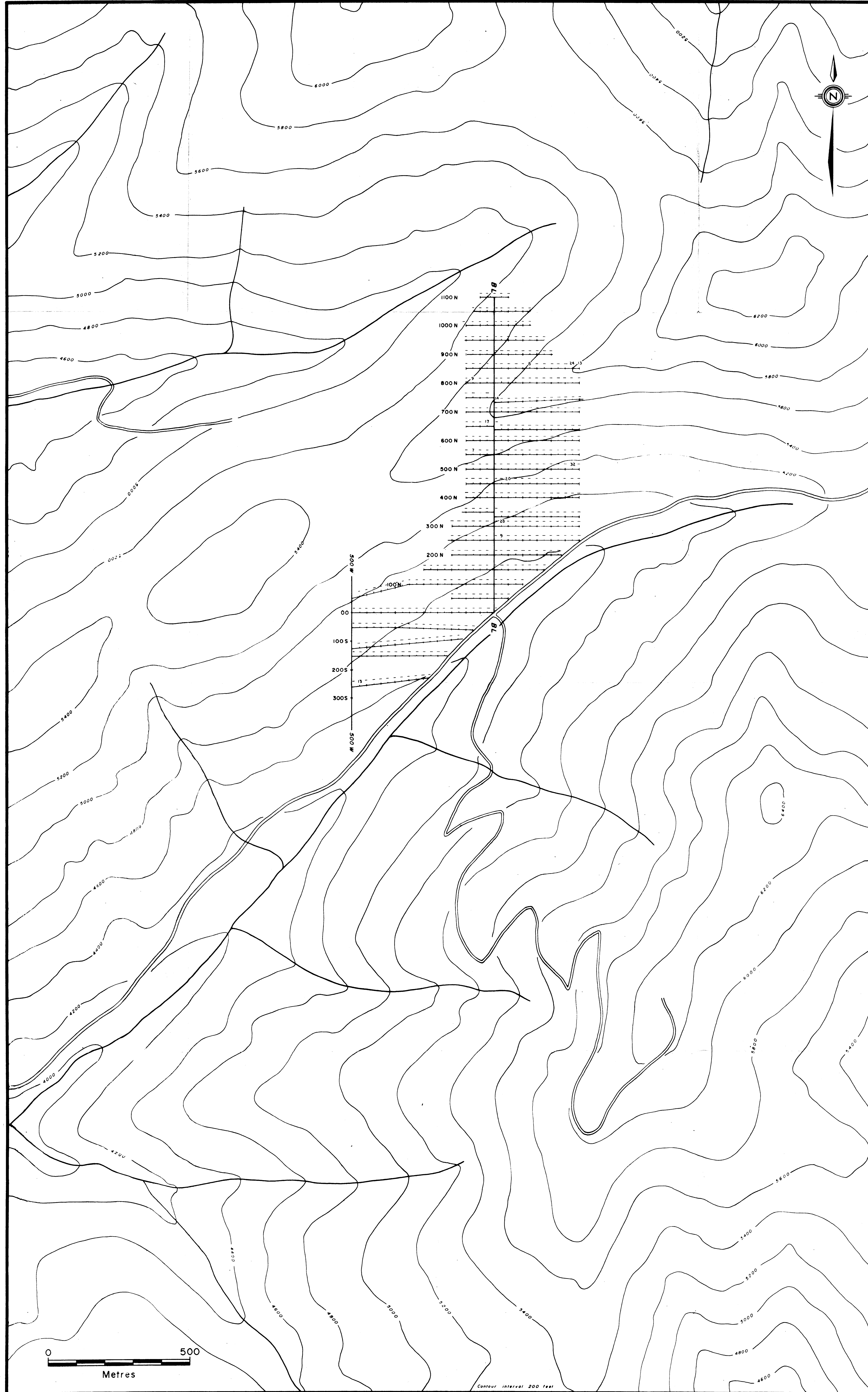
DISCOVERY Consultants

MINNOVA

STEWART PROJECT
CONTOUR SOIL
GOLD GEOCHEMISTRY

Date: Sept. 27, 1989	Scale: 1:5,000
Project: 519	N.T.S.: 82 F/G
M.D.: Nelson	Figure: 6

DRAWN: AUG. 22/1989
REVISED:
SEPT. 27/1989
NOV. 29/1989



LEGEND

- + ppm Sb
- + <5 ppm Sb

Soil Contours

GEOLOGICAL BRANCH
ASSESSMENT REPORT

19,704
PART 2
OF 2

DISCOVERY Consultants

MINNOVA

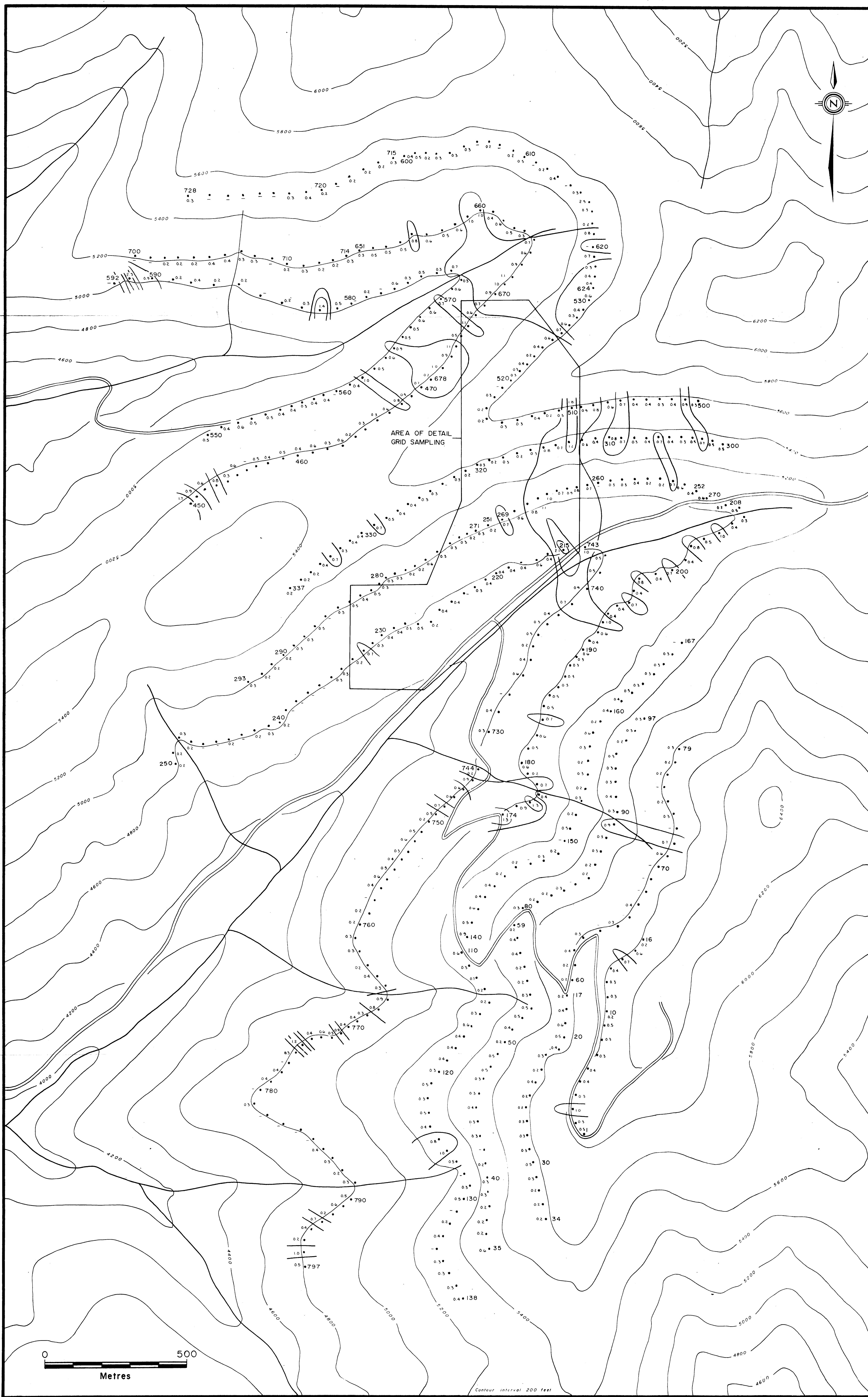
STEWART PROJECT
GRID SOIL
ANTIMONY GEOCHEMISTRY

Date: Oct 4, 1989	Scale: 1:5,000
Project: 519	N.T.S. 82 F/G
M.D. Nelson	Figure: 17

DRAWN OCT 4/1989
REVISED
NOV 22/89

0 500
Metres

Contour interval 200 feet



LEGEND

- 123 Contour Soil Sample Location
- ppm Ag
- 0.2 ppm Ag
- Soil Contours
- 2.0 ppm Ag
- 1.2 ppm Ag
- 0.7 ppm Ag

GEOLOGICAL BRANCH
ASSESSMENT REPORT

19,704

**PART 2
OF 2**

DISCOVERY Consultants

MINNOVA

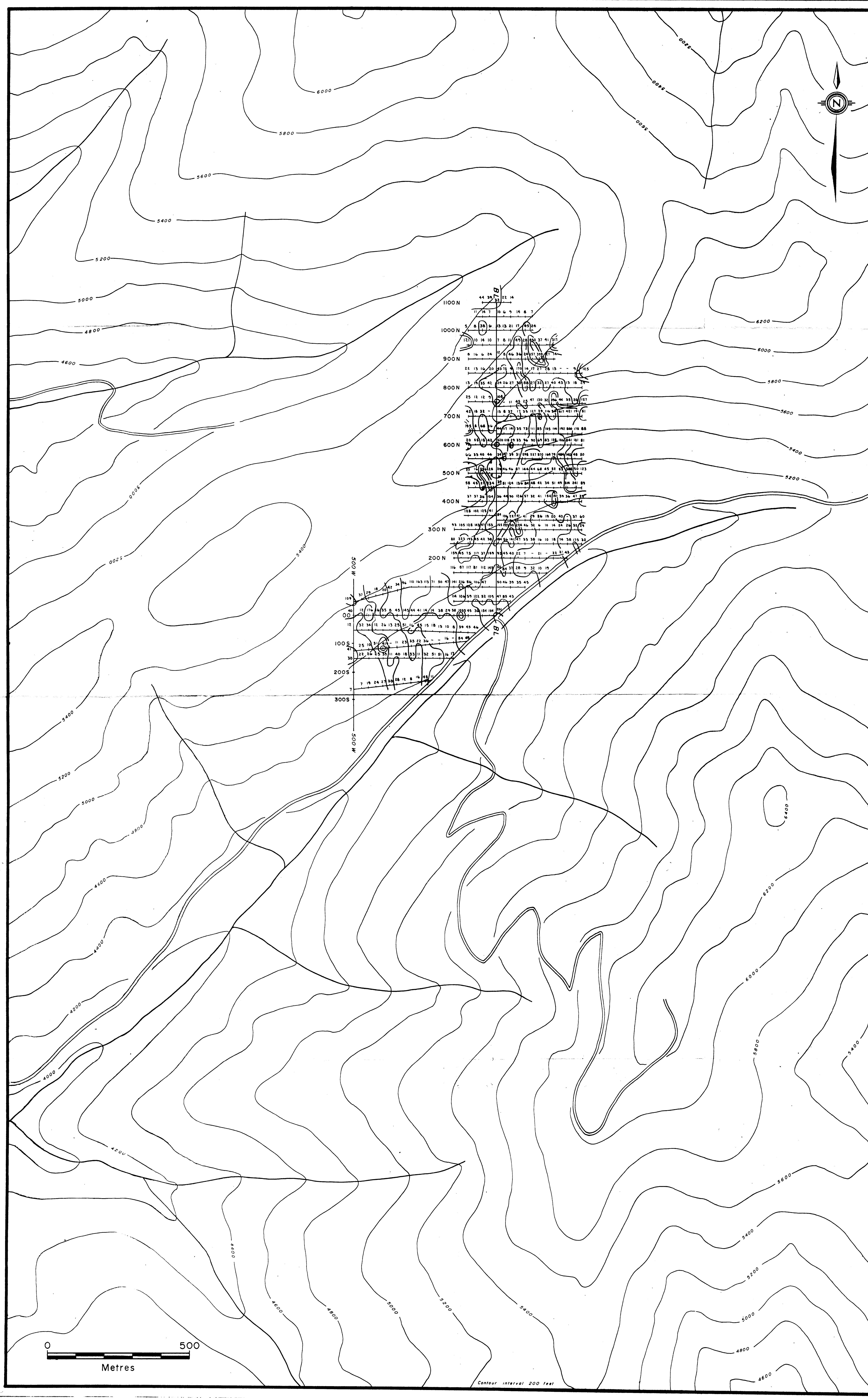
STEWART PROJECT
CONTOUR SOIL
SILVER GEOCHEMISTRY

Date: Sept. 26, 1989	Scale: 1:5,000
Project: 519	NTS: 62-F/6
M.D.: Nelson	Figure: 8

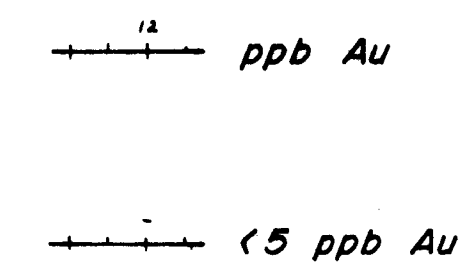
DRAWN: SEPT 26/1989
REVISED:
NOV 29/1989



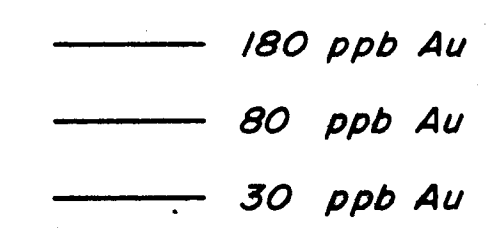
Contour Interval 200 feet



LEGEND



Soil Contours



GEOLOGICAL BRANCH
ASSESSMENT REPORT

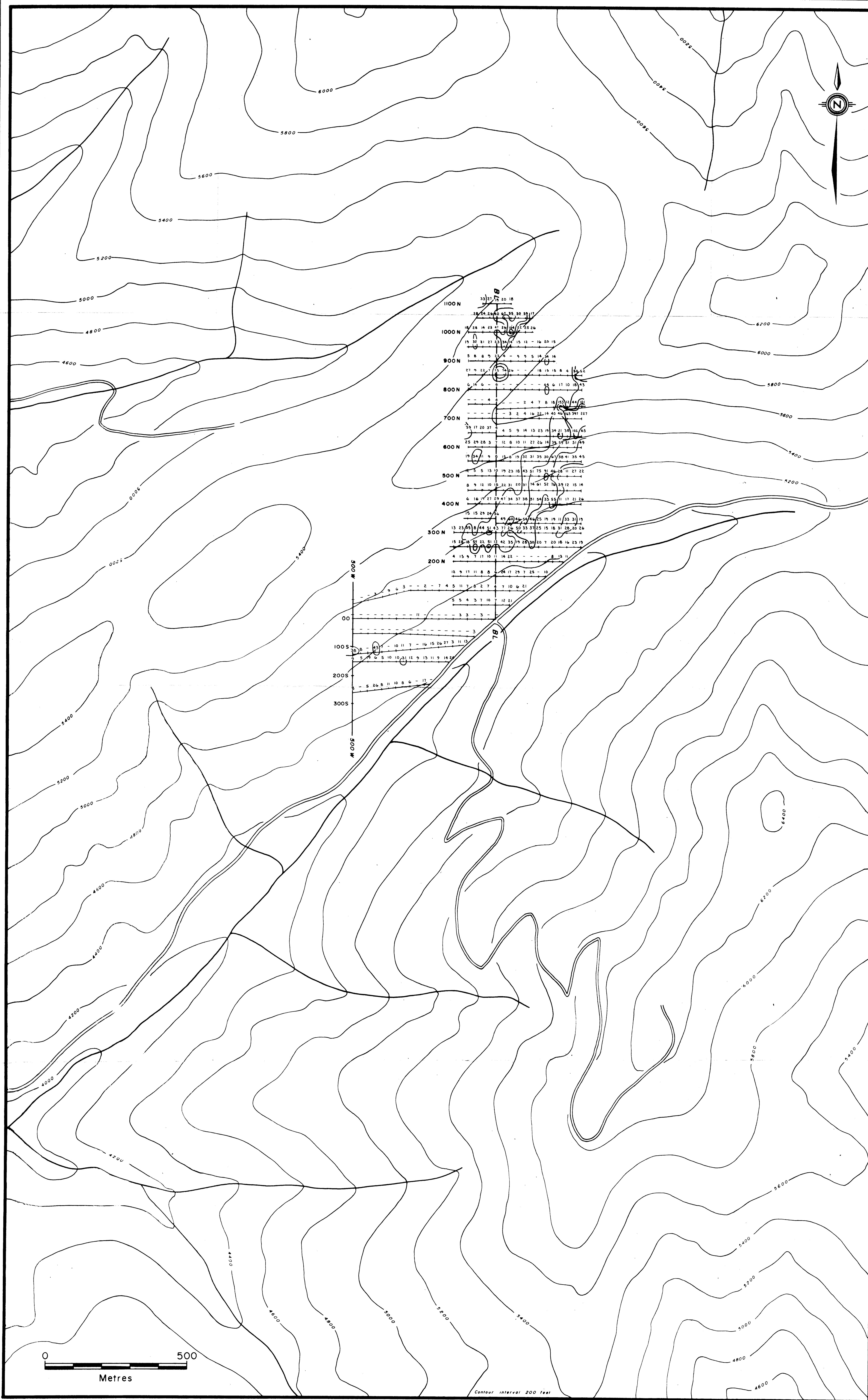
19,704

PART 2 OF 2

DRAWN: OCT. 4/1989
REVISED:
NOV. 29/1989

DISCOVERY Consultants	
MINNOVA	
STEWART PROJECT	
GRID SOIL GOLD GEOCHEMISTRY	
Date: Oct. 4, 1989	Scale: 1:5,000
Project: 519	N.T.S.: 82 F/6
M.D.: Nelson	Figure: 7

Contour Interval: 200 feet



LEGEND

— 14 ppm Pb

— 12 ppm Pb

Soil Contours

— 90 ppm Pb

— 50 ppm Pb

— 30 ppm Pb

GEOLOGICAL BRANCH
ASSESSMENT REPORT

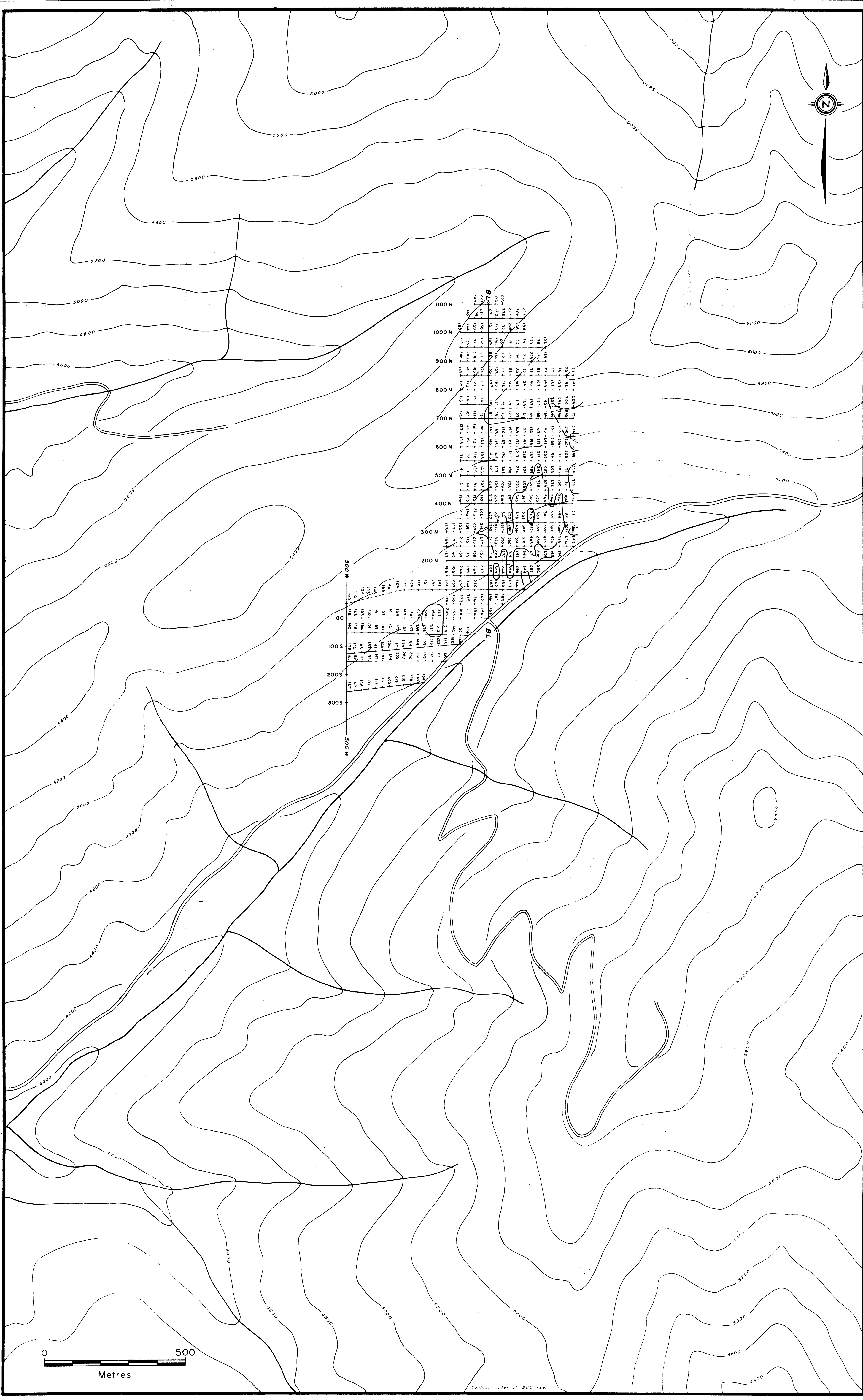
19,704
PART 2
OF 2

DRAWN OCT 4/1989
REVISED
NOV 20/1989

DISCOVERY Consultants	
MINNOVA	
STEWART PROJECT GRID SOIL LEAD GEOCHEMISTRY	
Date: Oct 4, 1989	Scale: 1:5,000
Project: 519	N.T.S.: 82 F/6
M.O. Nelson	Figure: 15

0 500
Metres

Contour interval 200 feet

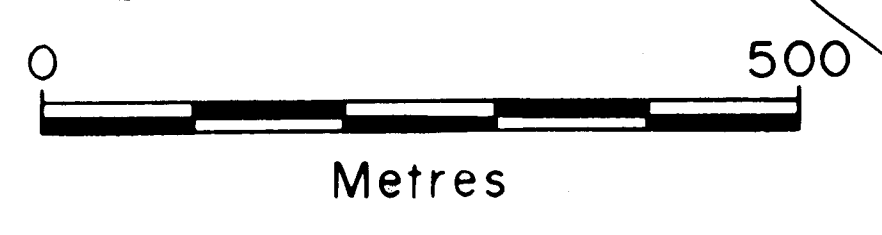


LEGEND

— ppm Zn

— Soil Contours

— 300 ppm Zn



GEOLOGICAL BRANCH
ASSESSMENT REPORT

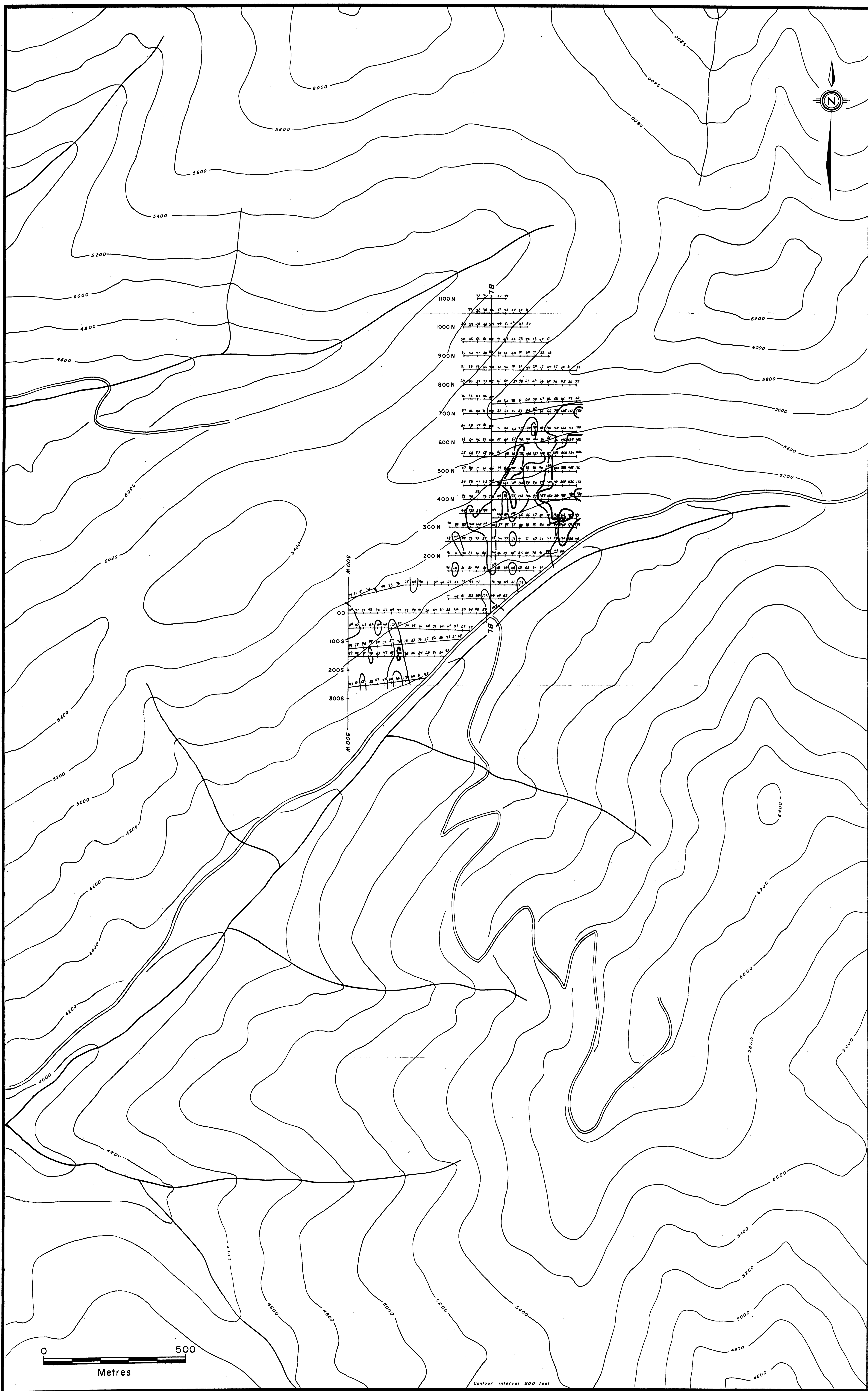
19,704

PART 2
OF 2

DISCOVERY Consultants	
MINNOVA	
STEWART PROJECT GRID SOIL ZINC GEOCHEMISTRY	
Date Oct 4, 1989	Scale 1:5,000
Project 519	NTS. B2 F/G
M.D. Nelson	Figure 1E

DRAWN OCT 4/1989
REVISED:
NOV 30/1989

Contour Interval 200 Feet



LEGEND

— ppm Cu

Soil Contours

— 150 ppm Cu

— 100 ppm Cu

**GEOLOGICAL BRANCH
ASSESSMENT REPORT**

19,704

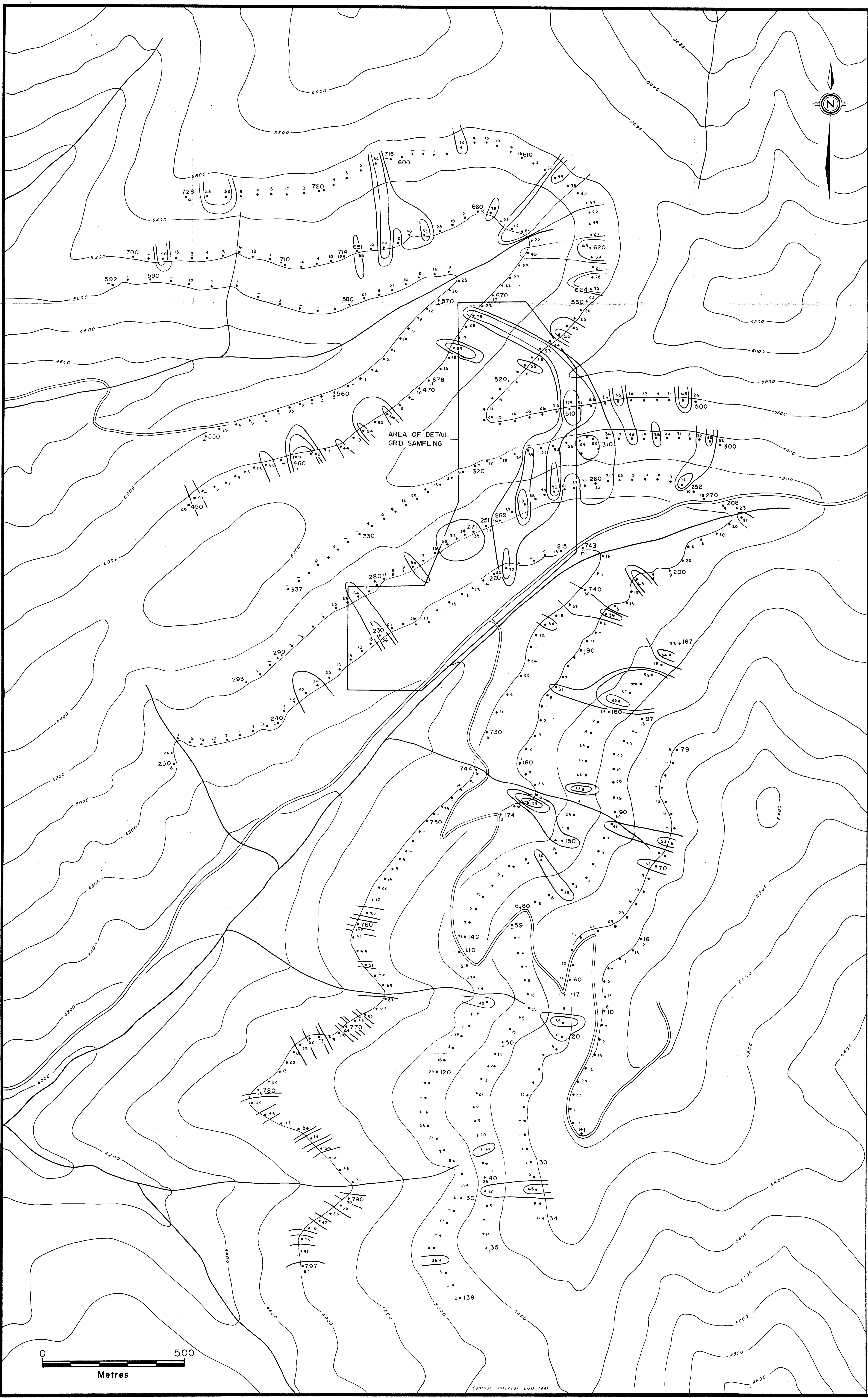
*PART 2
OF 2*

DISCOVERY Consultants	
MINNOVA	
STEWART PROJECT GRID SOIL COPPER GEOCHEMISTRY	
Date: Oct. 4, 1989	Scale: 1:5,000
Project: 519	N.T.S.: 82 F/6
M.D.: Nelson	Figure: 13

DRAWN OCT 4/1989
REVISED:

0 500
Metres

Contour Interval 200 feet



- LEGEND**
- 123 Contour Soil Sample Location
 - 56 ppm Pb
 - < 2 ppm Pb
- Soil Contours**
- 90 ppm Pb
 - 50 ppm Pb
 - 30 ppm Pb

GEOLOGICAL BRANCH
ASSESSMENT REPORT

19,704

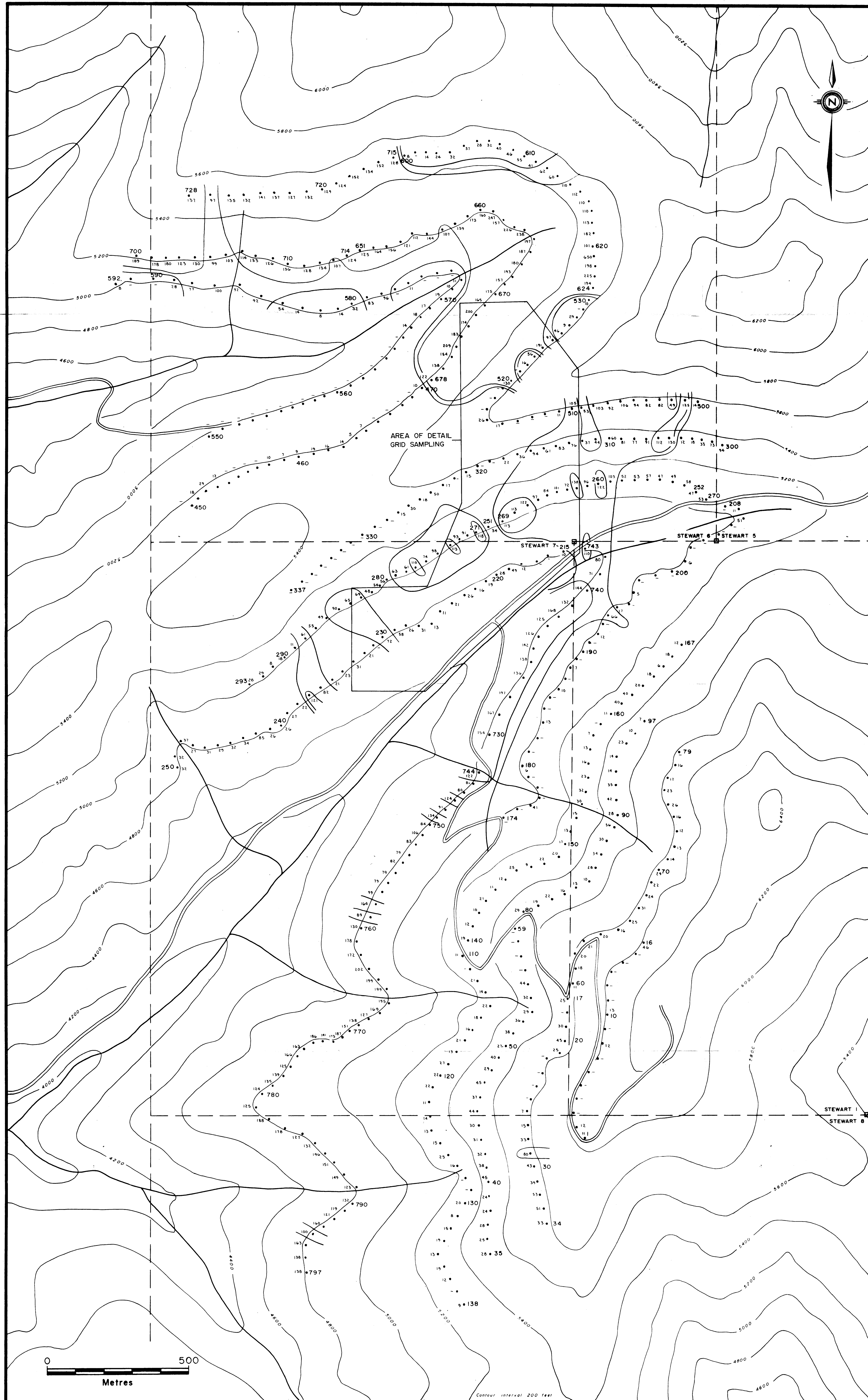
PART 2
OF 2

DISCOVERY Consultants	
MINNOVA	
STEWART PROJECT CONTOUR SOIL LEAD GEOCHEMISTRY	
Date: Sept. 26, 1989	Scale: 1:5,000
Project: 519	N.T.S.: 82 F/G
M.D.: Nelson	Figure: 14

DRAWN: SEPT 26/1989
REVISED:
NOV 29/1989



Contour interval 200 feet



LEGEND

- 123 Contour Soil Sample Location
- 7 ppm As
- <5 ppm As

Soil Contours

- 110 ppm As
- 60 ppm As

NOTE: Results suspect, check samples being re-analysed.

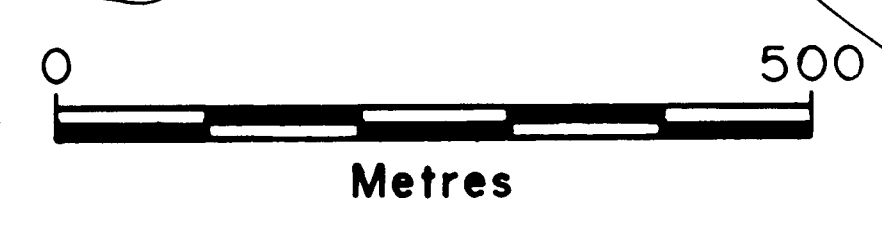
GEOLOGICAL BRANCH
ASSESSMENT REPORT

19,704

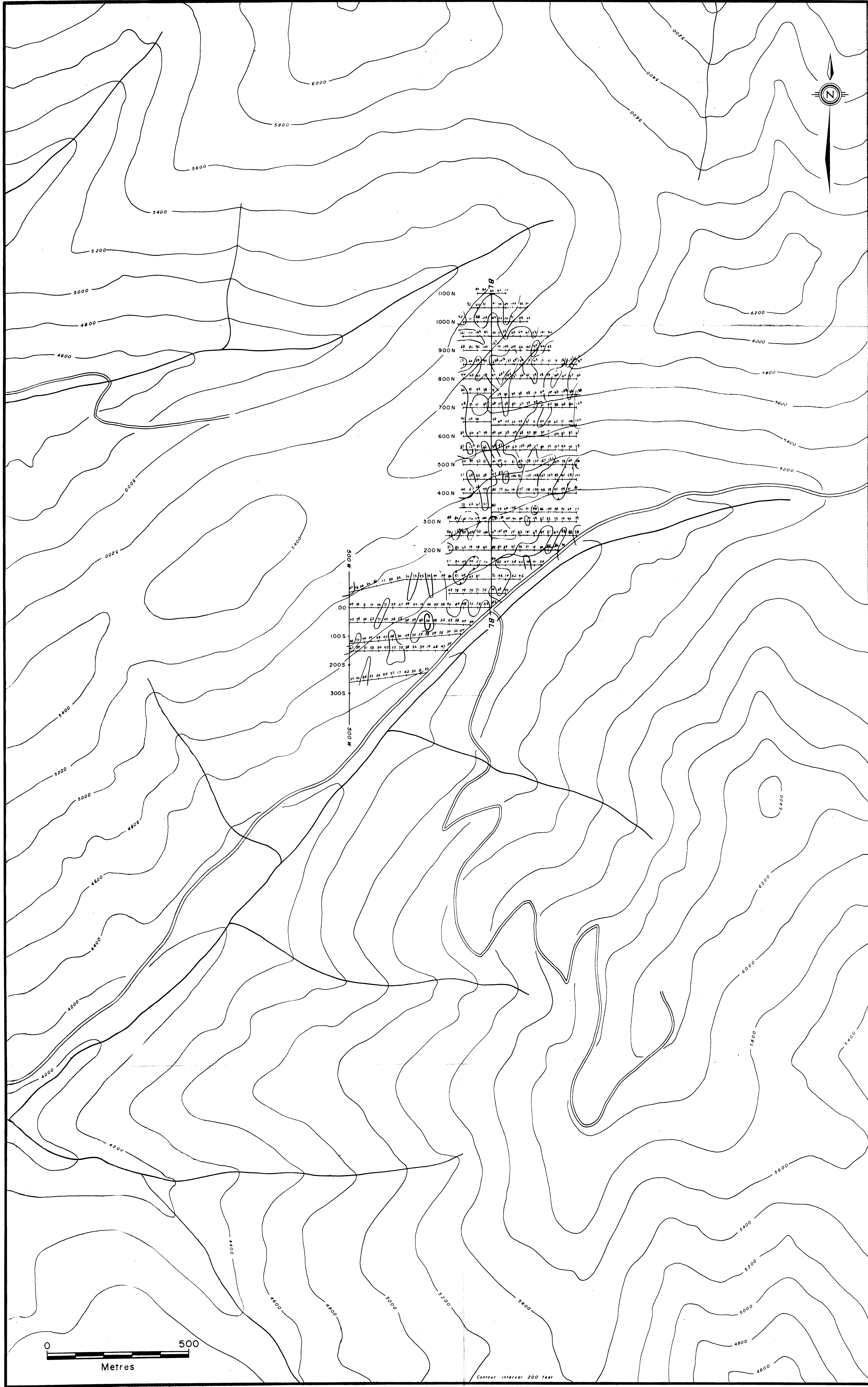
PART 2
OF 2

DISCOVERY Consultants	
MINNOVA	
STEWART PROJECT CONTOUR SOIL ARSENIC GEOCHEMISTRY	
Date: Sept 26, 1989	Scale: 1:5,000
Project: 519	N.T.S. 82 F/G
M.O. Nelson	Figure: 10

DRAWN SEPT 26/1989
REVISED
DEC 17/1989



Contour interval 200 feet



LEGEND

— 110 ppm As

— 60 ppm As

Soil Contours

GEOLOGICAL BRANCH
ASSESSMENT REPORT

19,704
PART 2
OF 2

DISCOVERY Consultants

MINNOVA

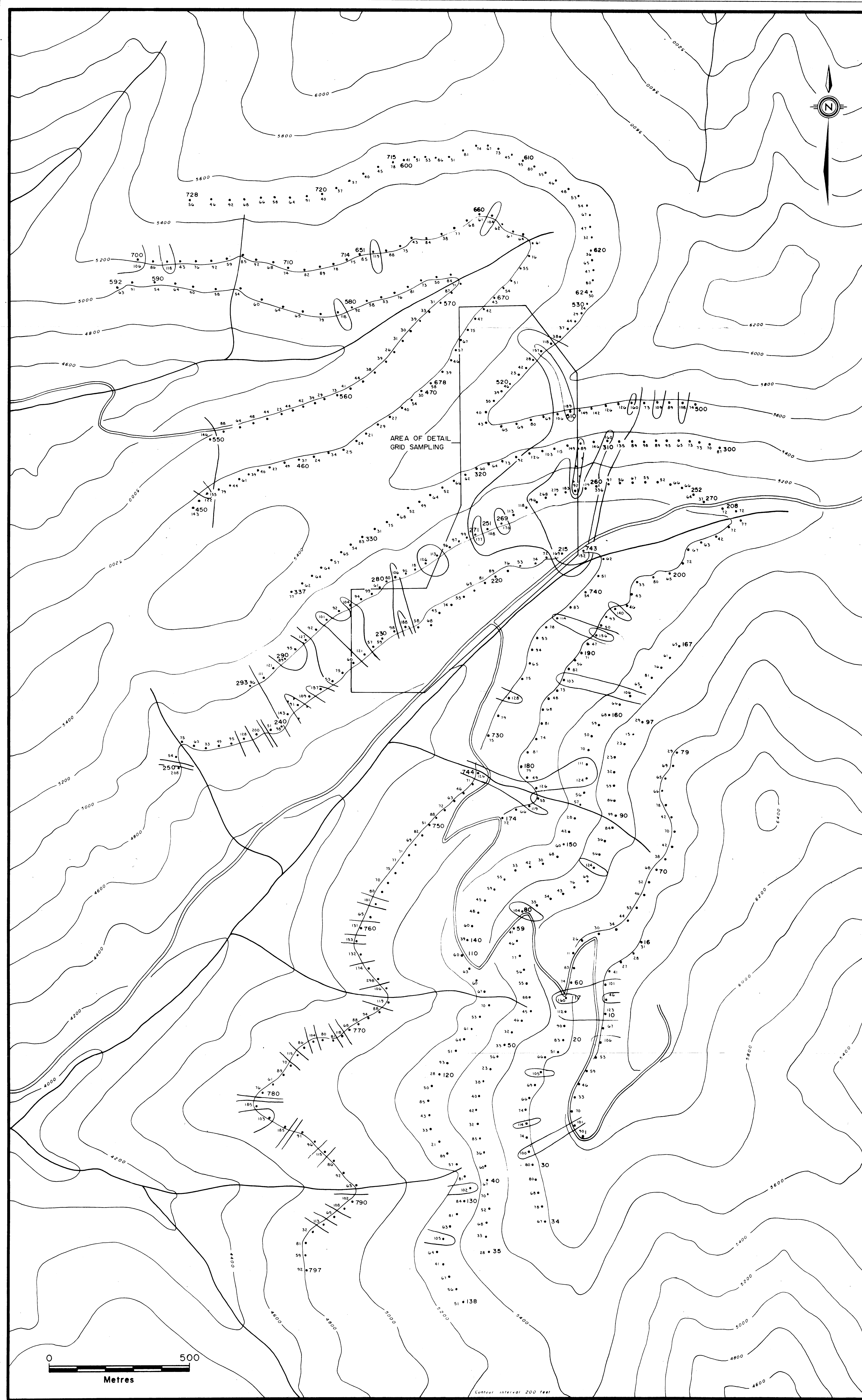
STEWART PROJECT
GRID SOIL
ARSENIC GEOCHEMISTRY

Date: Oct 4, 1989	Scale: 1:5,000
Project: 519	N.T.S.: 82 F/G
M.D. Nelson	Figure: II

DRAWN: OCT 4/1989
REVISED:
DEC 1/1989

0 500
Metres

Contour interval 200 feet



LEGEND

- * 123 Contour Soil Sample Location
- 167 ppm Cu
- Soil Contours
- 150 ppm Cu
- 100 ppm Cu

GEOLOGICAL BRANCH
ASSESSMENT REPORT

19,704
PART 2 OF 2

DISCOVERY Consultants	
MINNOVA	
STEWART PROJECT CONTOUR SOIL COPPER GEOCHEMISTRY	
Date: Sept 26, 1989	Scale: 1:5,000
Project: 519	N.T.S.: 82 F/G
M.D. Nelson	Figure: 12

DRAWN: SEPT 26/1989
REVISED:
NOV 30/1989

