



TYPE OF REPORT/SURVEY(S) PROSPECTING REPORT	TOTAL COST \$4,038
--	-----------------------

AUTHOR(S) .. Larry D. Lutjen SIGNATURE(S) *Larry D. Lutjen*

DATE STATEMENT OF EXPLORATION AND DEVELOPMENT FILED .. March 1990 YEAR OF WORK 1989

PROPERTY NAME(S) .. Golden Pope 1 and Golden Pope 2

COMMODITIES PRESENT .. Gold, silver, vanadium, iron, copper, lead, and zinc ..

B.C. MINERAL INVENTORY NUMBER(S), IF KNOWN .. (. unknown .)

MINING DIVISION Kamloops NTS 92P/16W

LATITUDE 51°49'09" LONGITUDE 120°29'00"

NAMES and NUMBERS of all mineral tenures in good standing (when work was done) that form the property [Examples: TAX 1-4, FIRE 2 (12 units); PHOENIX (Lot 1706); Mineral Lease M 123; Mining or Certified Mining Lease ML 12 (claims involved)]:

.. Golden Pope 1 and Golden Pope 2

OWNER(S)

(1) Larry D. Lutjen (2)

MAILING ADDRESS

RR1 - Box 12 - Site 1
Chase, B.C.
VOE-1M0

OPERATOR(S) (that is, Company paying for the work)

(1) Larry D. Lutjen (2)

MAILING ADDRESS

(Same)

SUMMARY GEOLOGY (lithology, age, structure, alteration, mineralization, size, and attitude):

.. See page 4 for Geology.

REFERENCES TO PREVIOUS WORK (. unknown .)

TYPE OF WORK IN THIS REPORT	EXTENT OF WORK (IN METRIC UNITS)	ON WHICH CLAIMS	COST APPORTIONED
GEOLOGICAL (scale, area)			
Ground
Photo
GEOPHYSICAL (line-kilometres)			
Ground
Magnetic
Electromagnetic
Induced Polarization
Radiometric
Seismic
Other
Airborne
GEOCHEMICAL (number of samples analysed for)			
Soil
Silt
Rock
Other
DRILLING (total metres; number of holes, size)			
Core
Non-core
RELATED TECHNICAL			
Sampling/assaying
Petrographic
Mineralogic
Metallurgic
PROSPECTING (scale, area) 40 Units	Golden .Pope .1 .(5Nx4E) .and .Golden .Pope .2 .(5Nx4W) \$4,038
PREPARATORY/PHYSICAL			
Legal surveys (scale; area)
Topographic (scale; area)
Photogrammetric (scale, area)
Line/grid (kilometres)
Road, local access (kilometres)
Trench (metres)
Underground (metres)
			TOTAL COST
			\$4,038

FOR MINISTRY USE ONLY	NAME OF PAC ACCOUNT	DEBIT	CREDIT	REMARKS:
Value work done (from report)	Information Class
Value of work approved	
Value claimed (from statement)	
Value credited to PAC account	
Value debited to PAC account	
Accepted	Rept. No.
Date

TABLE OF CONTENTS

Page

- LOCATION MAP 1

- TOPOGRAPHICAL MAP 2

- CLAIMS MAP 3

- PROPERTY OUTLINE 4

- LOCATION AND ACCESS 4

- GEOLOGY 4

- VEGETATION 5

- HISTORY 5

- PROSPECTING SURVEY 6

- STATEMENT OF COSTS 6

- GEOLOGICAL MAP 7

- GEOLOGICAL MAP LEGEND 8

- PROSPECTING SURVEY MAP 9

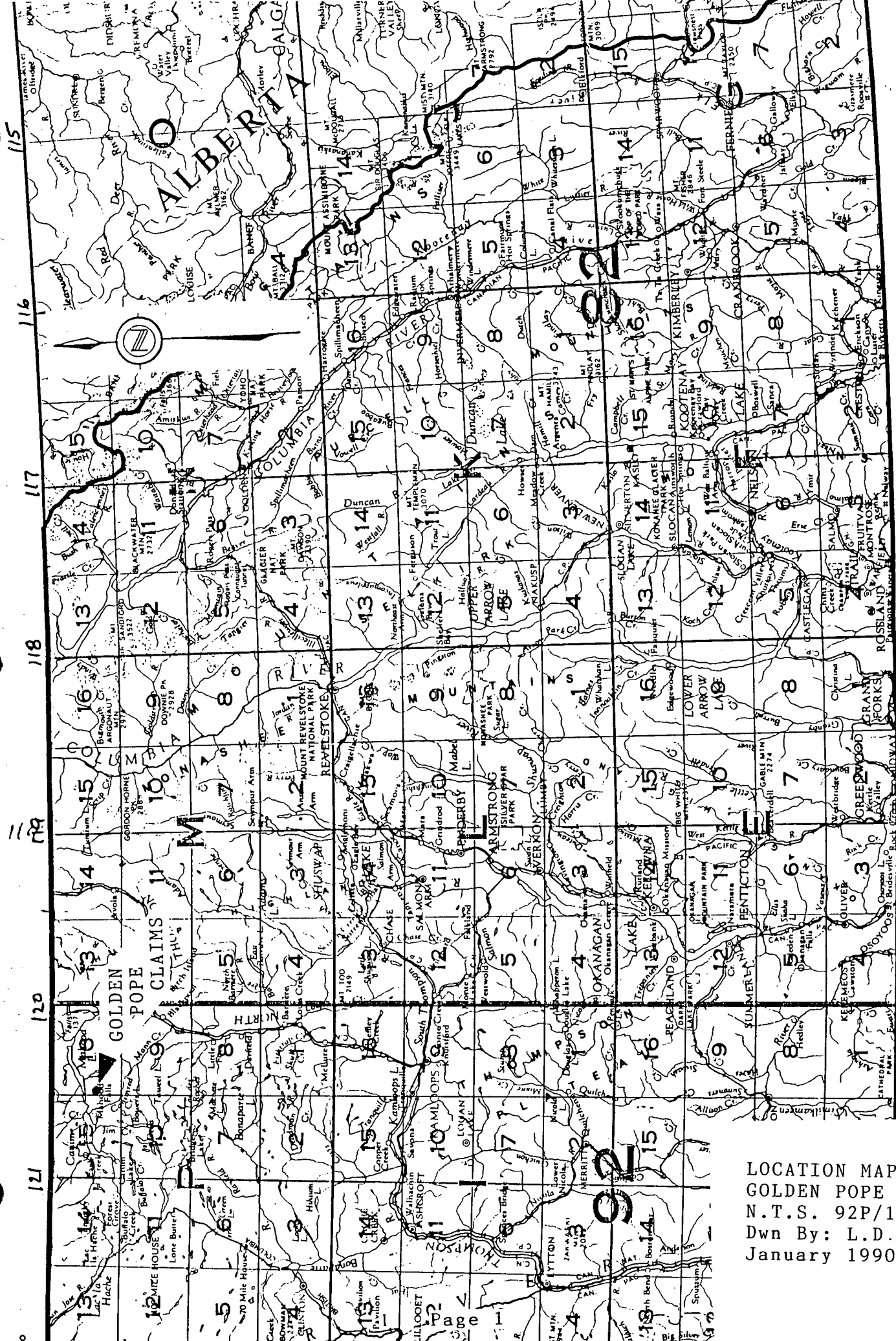
- QUALIFICATIONS 10

- CERTIFICATION 11

LOG NO: 0404	RD.
ACTION:	
FILE NO:	

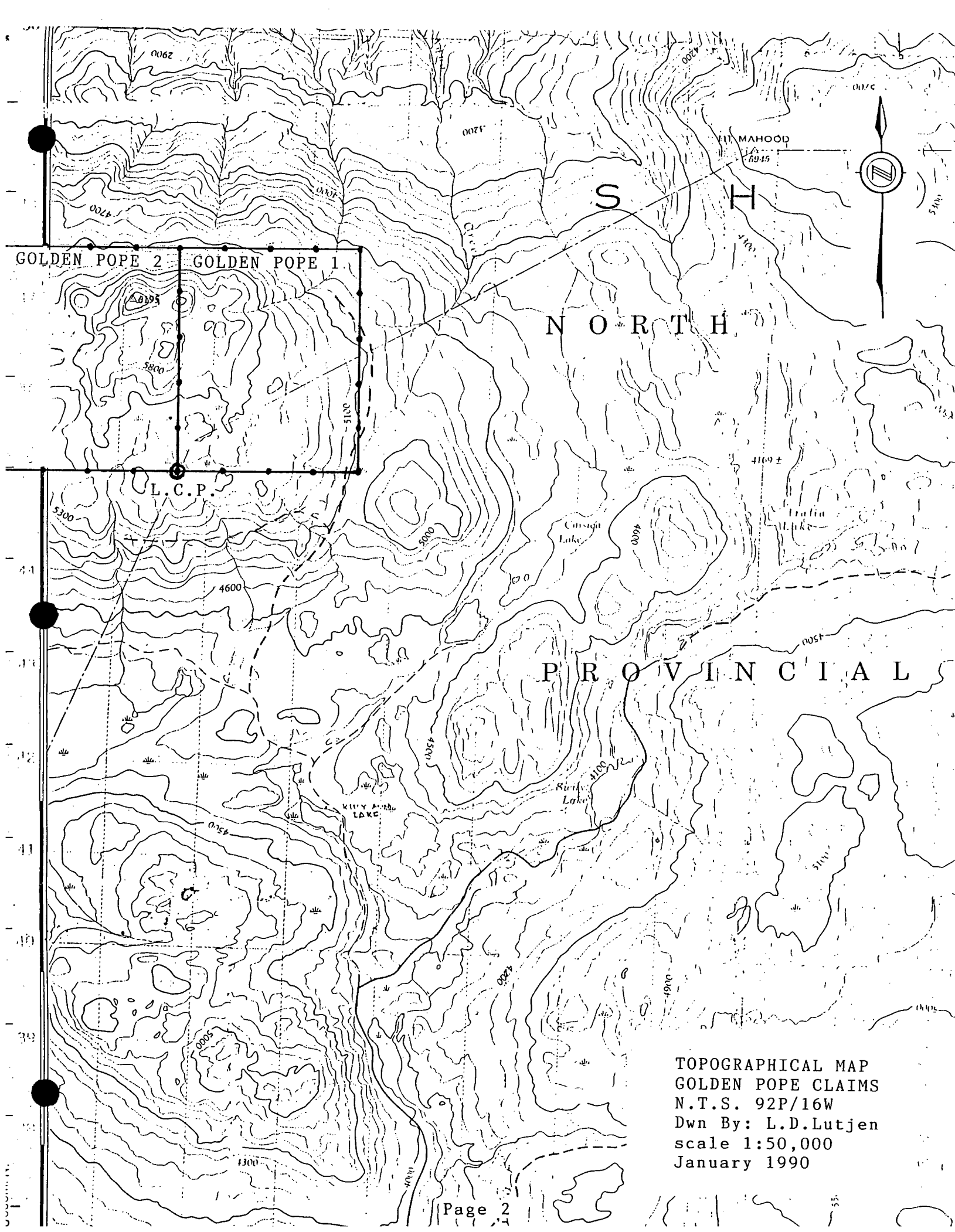
**GEOLOGICAL BRANCH
ASSESSMENT REPORT**

19,857



LOCATION MAP
 GOLDEN POPE CLAIMS
 N.T.S. 92P/16W
 Dwn By: L.D.Lutjen
 January 1990





GOLDEN POPE 2 GOLDEN POPE 1

L.C.P.

SOUTH
NORTH

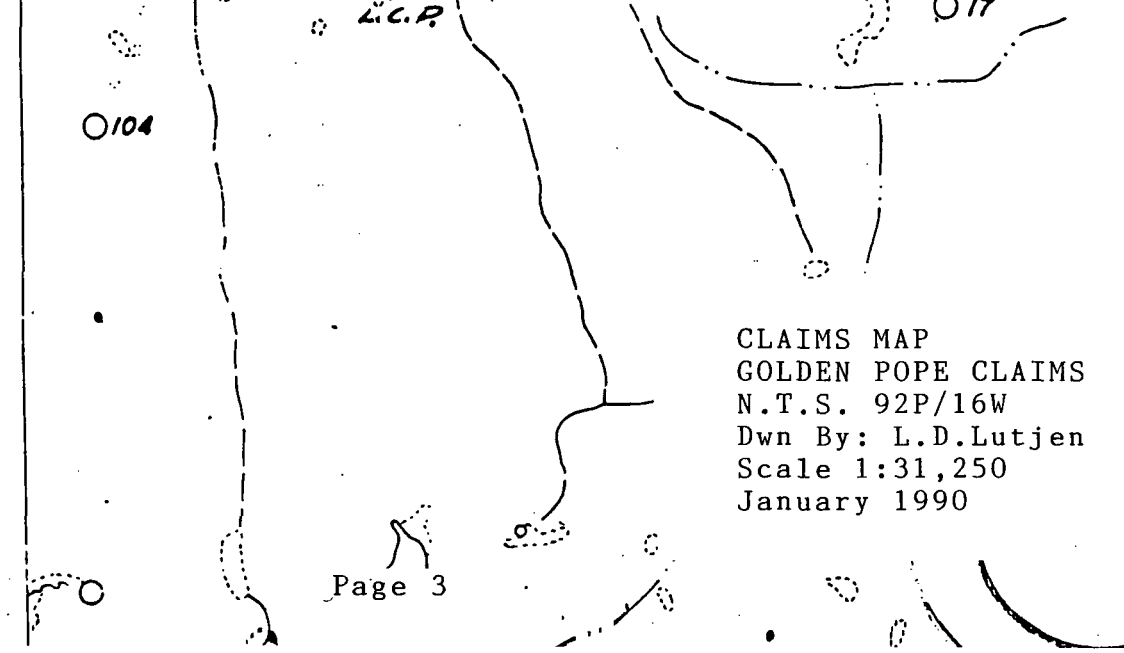
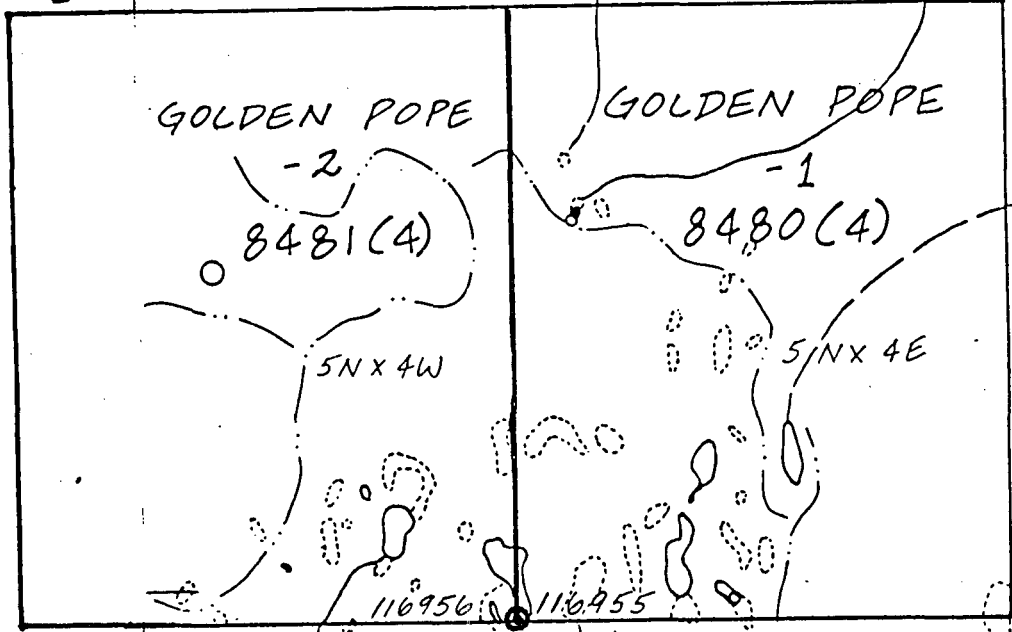
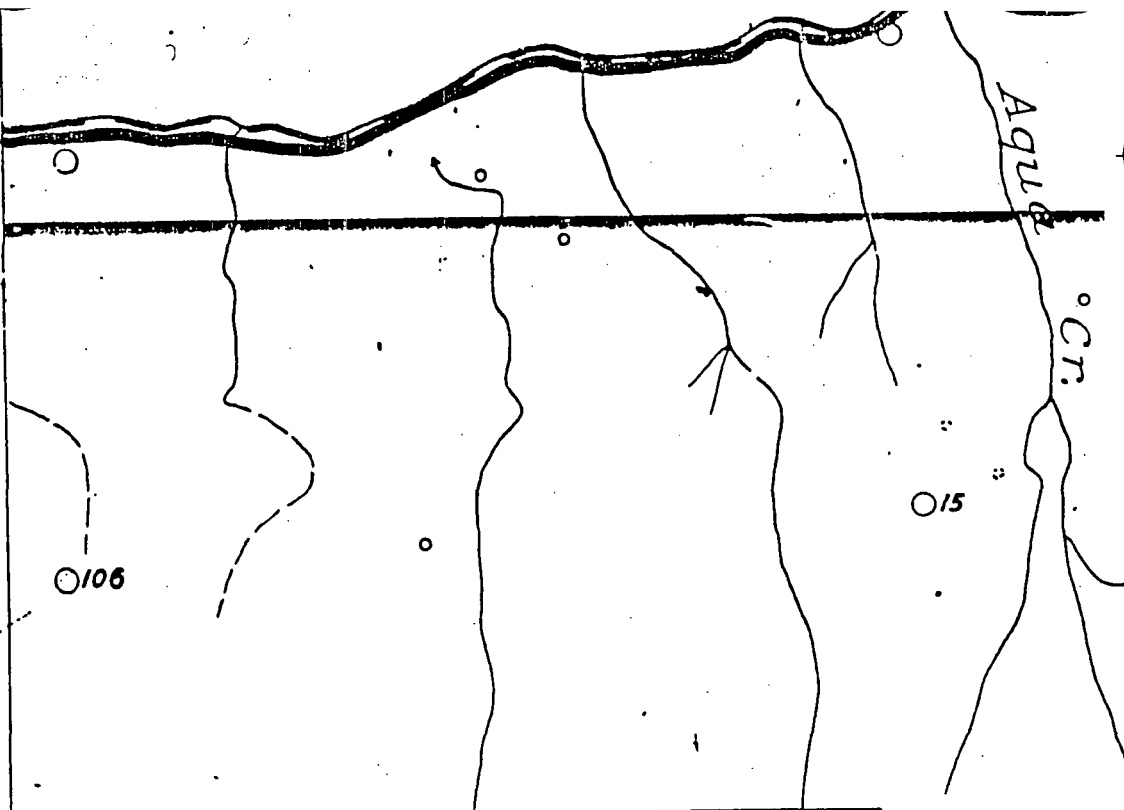
PROVINCIAL

TOPOGRAPHICAL MAP
GOLDEN POPE CLAIMS
N.T.S. 92P/16W
Dwn By: L.D.Lutjen
scale 1:50,000
January 1990

TO WEST SEE MAP 92 P/



AQUA
CT.



CLAIMS MAP
GOLDEN POPE CLAIMS
N.T.S. 92P/16W
Dwn By: L.D.Lutjen
Scale 1:31,250
January 1990

PROPERTY OUTLINE

The Golden Pope 1 is a 20 unit claim (5Nx4E) recorded on metal Tag No. 116955. The Golden Pope 2 is also a 20 unit claim (5Nx4W) recorded on metal Tag No. 116956. The claims were recorded in the Kamloops Mining Division on the 26 of April 1989. The Golden Popes 1 & 2 are 100% owned by Larry D. Lutjen; RR1-B12-S11; Chase, British Columbia; VOE-1M0. The properties were recorded on Free Miners License No. 293875.

LOCATION AND ACCESS

The Golden Popes 1 & 2 are located about 40km northwest of Clearwater, British Columbia on the Clearwater Timber Products No. 2 road. Take the No. 2 road to the north end of Kitty Ann Lake, thence west to the end of the No. 2 road approximately 4km. This will put you on the south-east corner of the Golden Pope 1 at the 1500 meter level. From here there is a series of new logging roads that traverse north and south through the property. The claims are situated about 3km south of Mahood Lake and 4.5km west of Corsica Lake, U.T.M. coordinates 5745150mN and 673700mE.

GEOLOGY

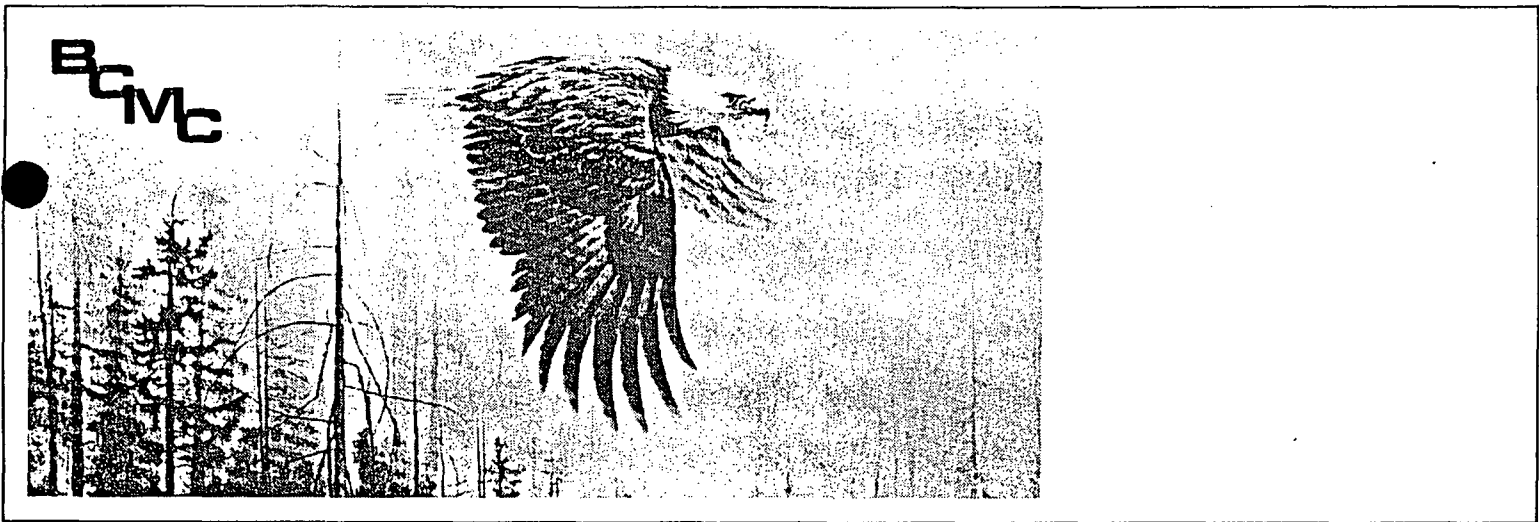
The Proterozoic/Paleozoic (?) Fennell Formation of argillite, chert, minor amphibolite, limestone, breccia, and greenstones are in geological/fault contact (?) with the Triassic Nicola sediments of black shale, black limestones, argillite, phyllite, and siltstone (?). Comfortably overlying this formation is the Cretaceous Baldy Batholiths of quartz diorite, minor pegmatite, diorite, granodiorite, quartz monzonite, and quartz/feldspar dykes. I believe the Canim Lake (2,534 ft) and Mahood Lake (2,066 ft) sequences represent a graben structure (?) trending northeasterly; and, the confluence of the two lakes (468 foot elevation differential) being intersected by a northwesterly trending fault (?), possibly a continuation or splay of the Pinchi Fault (?). I believe that in this area of contact between the graben and fault(?) we are looking at deep seated fracturing with resultant hypogene mineralization (Jan Kutina, 24 th IGC, 1972; sec. 4, pgs. 65-73). If we now go to the aeromagnetic map sheet 7221-G we will see a series of dyke swarms west of Quesnel Lake that represent the Pinchi fault system (?) and continue southeasterly toward Canim/Mahood Lakes; and, it is on the adjacent map sheet 7716-G that we see the contact (?) of the northwesterly dyke swarms (Pinchi Fault) and the northeasterly Canim/Mahood Graben (?). Upon an even closer examination of the area we see a very large magnetic anomaly (west of Corsica Lake) that I believe is a massive iron formation. Actual geological mapping of the area this year has yielded a relatively new intrusion of Tertiary (?) basalt found at the core of the magnetic anomaly. I am very excited about this discovery because it could represent the thermal driving force for epithermal gold deposits. Already in this area we have gold soil anomalies of 300 ppb and greater.

VEGETATION

The elevation of the Golden Pope claims is from 1500 meters on the perimeters of the property to 1888 meters at the center. At lower elevations there is an abundance of cedar, fir, birch, and alder. At higher elevations alpine forests of spruce and balsam fir take over with extensive swamp meadows in the core of the caldera. Underbrush consists mainly of buckbrush and vine alder and is very thick on the down slope terranes. There are no roads into the caldera but several old fire-breaks were cut into the meadows during a fire estimated to have occurred about 20 years ago. The No. 2 road into Kitty Ann Lake is an all weather road kept open all year round and with the new logging roads into the property, access is expected to remain open 12 months of the year. There are four lakes on the property that could supply water for drilling 12 months of the year with several other swampy areas that would be sufficient in the spring and early summer.

HISTORY

Aside from the discovery of 600-700 feet of drill core (estimated to have been drilled in 1986/87) there is no known history of mineral exploration in the area of the Golden Pope 1 & 2. I've concluded that the drilling must have been done by the Ministry because if a major corporation would have done it they would have staked a claim around the drilling. The core was B-core and for the first 300-350 feet they drilled through Baldy Batholith granodiorite then they drilled into a layer of lapilli tuff from 350-550 feet. No claims have been staked in the area in recent times according to the Kamloops Gold Commissioners records.



BARNES CREEK MINERALS CORPORATION RR1 - S11, BOX 36, CHASE, B.C. V0E 1M0 (604) 679-8022

Invoice To

Larry D. Lutjen
 RR-1 B12
 Chase, B.C.
 V0E-1M0

Willy Kovacevic
 415-470 Granville
 Vancouver, B.C.
 V6C-1V5

Reference

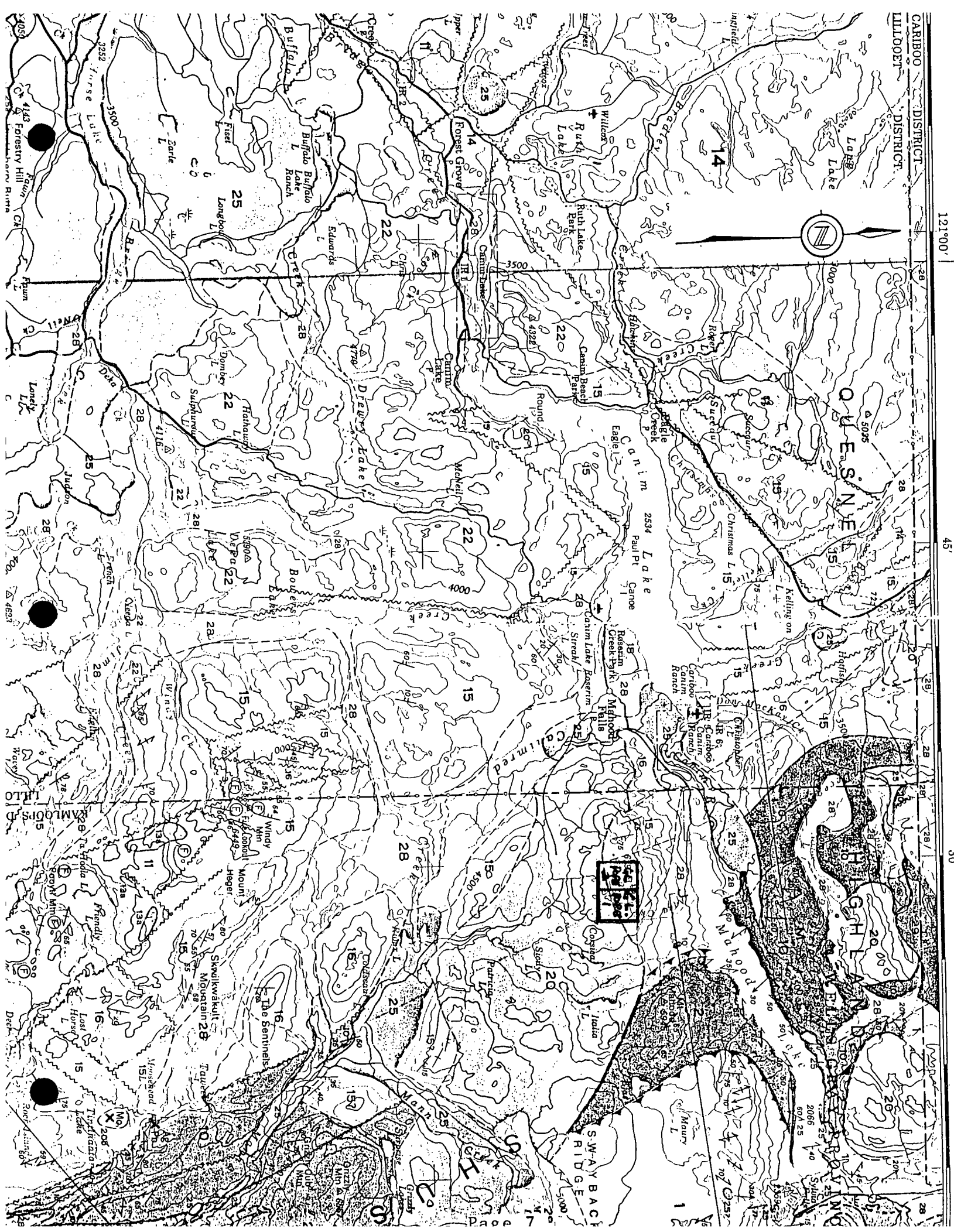
Golden Pope Assessment (1989)

Prospecting Survey (22-27 October 1989)

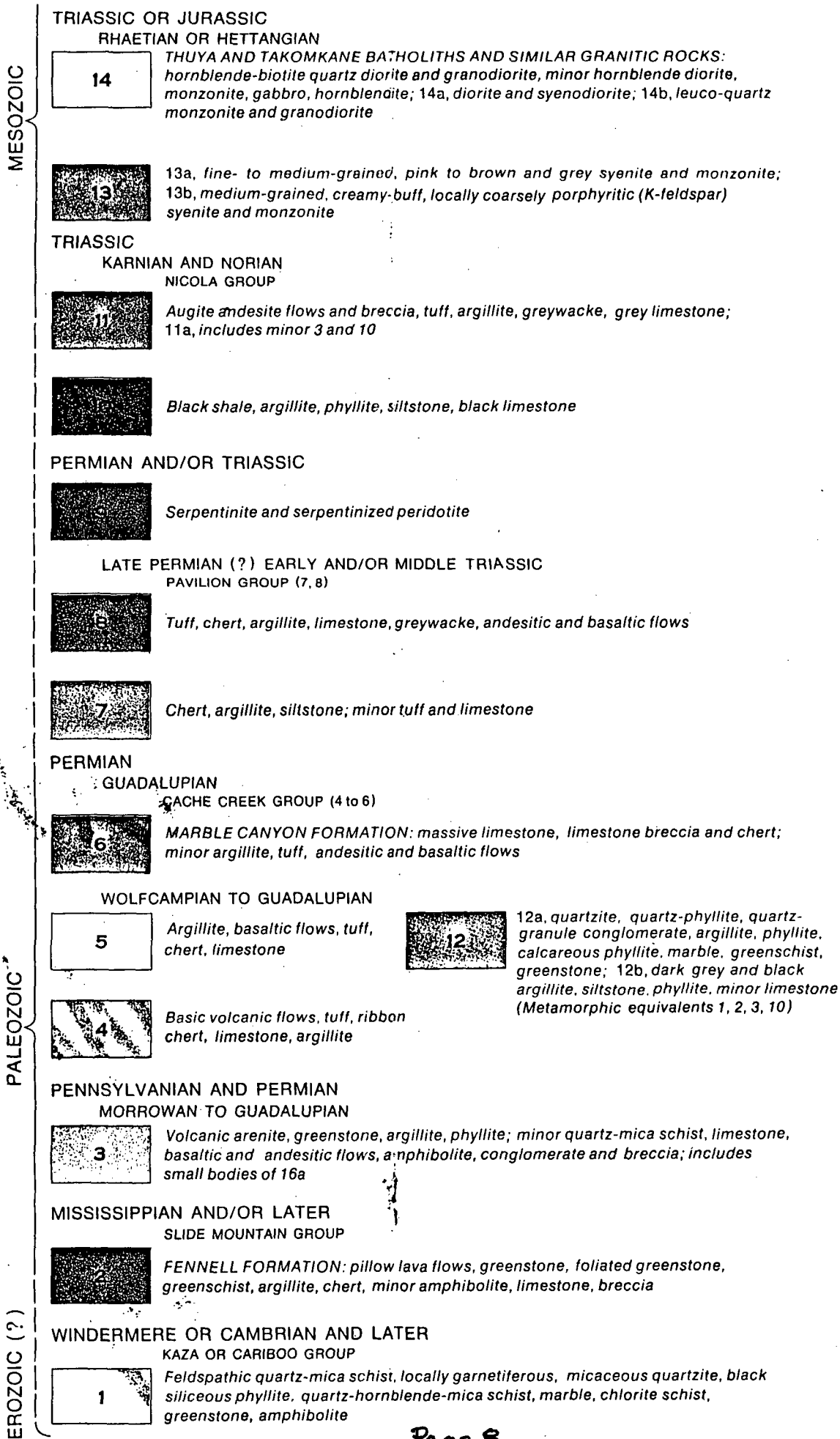
- Mobilized survey and drove to Clearwater, B.C., then West on road no. 2 past Kitty Ann Lake to the end of the no. 2 road. We set-up camp at the 1524m level on a new logging road South of the Golden Pope Claims (1 day).
- Traversed to L.C.P. then North in an attempt to locate the old grid (OON-1000N+100W-100E) to resample anomalous gold and silver area. Unable to locate old grid. 6-8 inches of snow made it very difficult.
- Traversed to L.C.P. then up West side of Paul Lake in an attempt to locate old grid. Once again unable to locate, going tough (1 day).
- Traversed to L.C.P. then North to volcanic intrusion. We mapped the basaltic intrusion and located several quartz veins (1 day).
- Traversed East of campsite in an attempt to locate old drill-site (1985-86), but new logging road has obliterated the site. Located some old pieces of B-core. They were Baldy granodiorite and lapilli tuff (1 day).
- Broke camp and demobilized survey (1 day).

Statement of Costs

- L.D.Lutjen (Field Supervisor) 6 days at \$175 per day.....	\$1,050
- D.Rawn (Field Technician) 6 days at \$150 per day	\$ 900
- B.Y.Lutjen (Camp Cook) 6 days at \$125 per day	\$ 750
- Food for 6 days	\$ 187
- Field supplies (flagging, hip-chain thread, books, bags, etc.)..	\$ 142
- Camping Equipment rental (cook-tent, sleeping-tents, stove, lights, fuel, heater, ice-chest, tarps, etc.)	\$ 225
- Transportation at \$.35 per km for (1,403 km)	\$ 491
- Data Processing (typing, filing, reproductions, etc.)	\$ 93
- Communication Equipment (base station and 2 walkie-talkies) at \$50 per week for 1 week	\$ 50
- Report preparation for 1 day at \$150 per day	\$ 150



LEGEND



CENOZOIC

PLEISTOCENE OR RECENT



Basaltic cinder cone (incorporates cobbles of older rocks)

TERTIARY OR QUATERNARY
PLIOCENE OR PLEISTOCENE



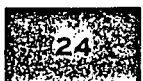
26a, basaltic arenite, conglomerate breccia, rubble, basaltic flows, locally pillowed; 26b, extinct basaltic volcanoes, basaltic flows and cinder deposits

TERTIARY
MIOCENE AND/OR PLIOCENE



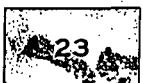
Plateau lava; olivine basalt, basalt andesite, related ash and breccia beds; basaltic arenite; 25a, olivine gabbro plugs

MIOCENE



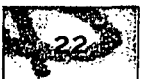
DEADMAN RIVER FORMATION: shale, sandstone, tuff, diatomite, conglomerate, breccia

OLIGOCENE



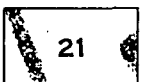
Andesite, dacite, felsite, related tuff and breccia; greywacke, shale; minor lignite and conglomerate

EOCENE AND (?) OLIGOCENE
KAMLOOPS GROUP (21, 22)



SKULL HILL FORMATION: dacite, trachyte, basalt, andesite, rhyolite, related breccias

EOCENE



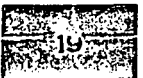
CHU CHUA FORMATION: conglomerate, sandy shale, arkose, coal

CRETACEOUS



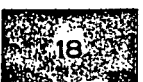
RAFT AND BALDY BATHOLITHS AND SIMILAR GRANITIC ROCKS: biotite quartz monzonite and granodiorite; minor pegmatite, aplite, biotite-hornblende, quartz monzonite; 20a, quartz diorite, diorite, granodiorite (may include some older rocks); 20b, aplite, leuco-quartz monzonite and granite

APTIAN AND/OR ALBIAN
JACKASS MOUNTAIN GROUP



Greywacke, shale, siltstone; minor arkose and lenses of pebble conglomerate

JURASSIC (?)

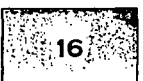


Shale, grit

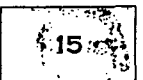


Chert-pebble conglomerate, greywacke

JURASSIC
SINEMURIAN TO (?) MIDDLE JURASSIC



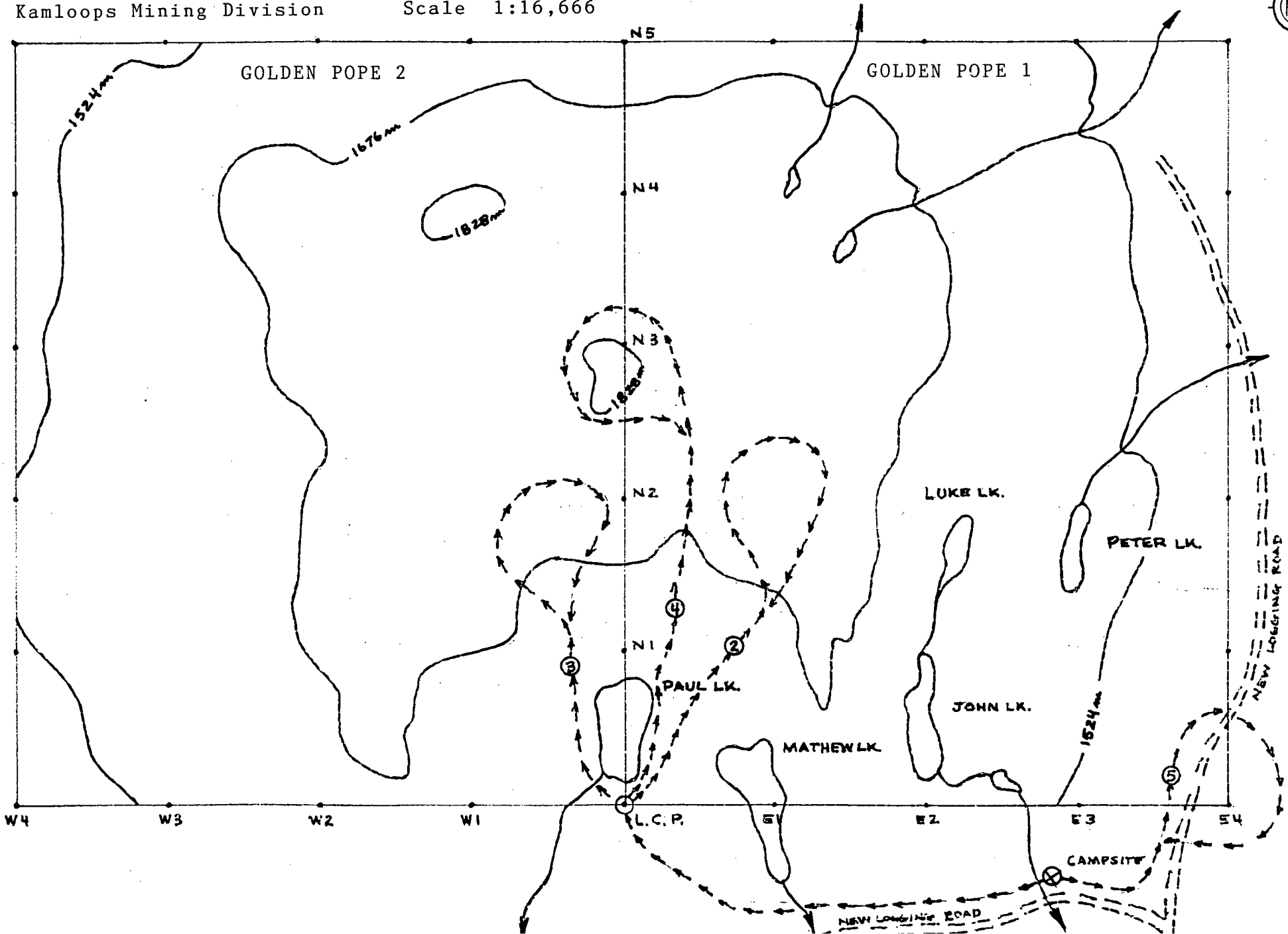
Porphyritic augite andesite breccia and conglomerate; minor andesite, arenite, tuff, argillite, and flows (may include some 11; 16a, isolated areas of hornblende andesite (may be all or partly intrusive)



Andesitic arenite, siltstone, grit, breccia and tuff; local granite bearing conglomerate, greywacke; minor argillite and flows (may include some 11)

GOLDEN POPE 1 & 2
N.T.S. 92P/16W
Kamloops Mining Division

Dwn By: Larry D. Lütjen
Date: March 1990
Scale 1:16,666



Page 9

Qualifications

I Larry D. Lutjen of R.R. 1, Box 12, Chase, B.C. VOE 1MO phone 679-8022, having graduated from the College of San Mateo, U.S.A. in 1965 (Degree in Electronics) have the following prospecting and related experience:

- 1958-1962 Surface and underground mining on the Hard Quartz mineral claim, Adin Mt. California (drilling, blasting, timbering, highgrading)
- 1963-1969 Prospecting with John Harden on the Warner Range (California), Lovelock Plateau (Nevada), and Shaffer Mountain (California) for Au, Ag, Hg, W, Mo, Cu, Zn, & Pb. Staked several claims in California and Nevada.
- 1972-1976 Geophysical prospecting with Frank Hall in the Scotch Creek area (British Columbia). Optioned several claims, Silver King, Silver Queen etc., (used horizontal & vertical loops at 1600 c.p.s., Sharpe SE 600 and self potential surveys)
- 1977-1980 Geophysical & geochemical prospecting in the Shuswap Lake and Adams Plateau area. (McPhar 800 magnetometer). Geophysically prospected the Lost Cabin Mine on Adin Mt., California for Lorcan Resources Ltd., resulting in a ten year option.
- 1981-1982 Geophysical & geochemical prospecting with J. A. Lutjen and R. D. Lodmell in the south central region of B.C. (McPhar 800 and S.P.). Staked 12 properties from Beaverdell to the Adams Plateau. Optioned Au-1 & Au-2 in Monashee Pass to Tylox Resources Ltd.
- 1982-1983 Received my geophysical certification from Malaspina College. Did a geophysical survey on Ground Hog Basin for Aurun Minerals Ltd. (Geonics 816-G Proton Mag. and EM-16 VLF-EM), including geochemical sampling, geophysical mapping and grid layout. Geochemical sampling and geological mapping for Tylox Resources Ltd. on the Au-1 & Au-2 claims in the Monashee Pass, B.C.
- 1983-1984 Geophysical survey on the Golden Eagle claims for MacKenzie Range Gold Inc., including mapping and interpretation. (Scintres MF-2 Magnetometer, Sabre Model 27 VLF-EM, and S.P.). Geophysical and geochemical survey on the Golden Quartz 1-12 on Adin Mt. for MacKenzie Range Gold Inc. (Scintrex MF-2 and Sabre Model 27 VLF-EM).
- 1984-1985 Geophysical and geological surveys (80km) for Barnes Creek Minerals Corp., including mapping, profiles, contours and interpretation (Scintrex MF-2 Magnetometer, Sabre Model 27 VLF-EM and S.P.). Assessment report on the Otto claims (geophysical) on the Adams Plateau for M. Riley. Geochemical & geophysical survey (30km) for Noranda Exploration Ltd. on their Birk Creek Project. Geochemical and Geophysical survey (10km) for Noranda Exploration Ltd. on their London Ridge Project.
- 1985-1986 Geochemical and geophysical survey (20km) for Barnes Creek Minerals Corp. on their Golden Loon claim. Geochemical and geophysical survey (30km) for Lacana Mining Corporation on their Comstock property on the Adams Plateau. Assessment reports of the Golden Eagle I & II, Golden Loons I - IX, and Silver Weasel I & II for Barnes Creek Minerals Corporation.
- 1986-1987 50km geochemical and geophysical survey for Mineta Resources Ltd. on optioned Golden Loon claim. 10km geophysical survey for Barnes Creek Minerals Corp. on the Platinum Giant claim. 20km geochemical and geophysical survey on Lost Cabin claim for Westwego Resources Ltd. (Geometrics 816G proton magnetometer, Sabre mod.27 VLF/EM, and S.P.)
- 1987-1988 10km geochemical and geophysical survey for Westwego Resources Ltd. on the King George claims. 10km geophysical survey for Westwego Resources Ltd. on Lost Cabin claims. Assessment Reports for Barnes Creek Minerals Corp. Golden Skarn (40 units), Lost Lightning Peak Mine (20 units), and Golden Popes (40 units). (Geometrics 816G proton magnetometer, Sabre mod.27 VLF/EM, and S.P.)



MALASPINA COLLEGE

Statement of Course Completion

LARRY D. LUTJEN

has

Successfully Completed 180 Hours of Instruction
in

MINERAL EXPLORATION FOR PROSPECTORS

PRESENTED BY B.C. MINISTRY OF ENERGY, MINES AND PETROLEUM RESOURCES
B.C. MINISTRY OF EDUCATION

APRIL 16 to 30, 1983 - MESACHIE LAKE, B.C.

MAY 2, 1983

Dated at Nanaimo,
British Columbia, Canada



[Signature]

Director / Dean

[Signature]

Registrar

[Signature]

Instructor