

| | |
|--|-------|
| LOG NO: 10-16 | RD. 3 |
| ACTION: <i>Date returned back from amendment</i> | |
| FILE NO: | |

SUB-RECORDER
RECEIVED
APR 24 1990
M.R. # \$
VANCOUVER, B.C.

STMP MINERAL CLAIMS

TITLE PAGE

| | |
|-----------|--|
| GENERAL | Exploratory core drilling for mineral potential and geological structure |
| CLAIMS | STMP (STMP#1 & #2) |
| LOCATION | Kamloops Mining District |
| MAP NO. | 92, I 8 W & E |
| LOG & LAT | Log 5589.5 Lat 695.4 LAT. 50°26' LONG. 120° 16' |
| OWNER | Lloyd E. Mear |
| OPERATOR | Lloyd E. Mear |
| AUTHOR | Lloyd E. Mear |
| DATE | April 22nd, 1990 |

| | |
|--------------|-----|
| LOG NO: 0426 | RD. |
| ACTION: | |
| FILE NO: | |

GEOLOGICAL BRANCH
ASSESSMENT REPORT

19,919
6161

STMP MINERAL CLAIMS

Table of Contents

| | |
|--------|-------------------|
| Page 1 | Title Page |
| 2 | Table of Contents |
| 3 | Introduction |
| 4 | Index Map |
| 5 | Cost Statement |
| 6 | Plan Map |

INTRODUCTION

- A. General Location - Kamloops Mining District, 25 miles south of Knutsford and 2 miles east of Nadier Lake.
- B. Property is covered by typical south Kamloops range land, by most part open with evergreen cover at the eastern end.
- C. No known mineralized history available on claims.
- D. Current owner - Lloyd E. Mear
- E. No economic evaluation yet determined.
- F. Prospecting over 85% of claim area has produced a number of float specimens showing favourable mineralization. No outcrops containing mineralization have been discovered.

Infra Red photography has indicated possible mineralization as shown on index map.

(100m)

1 drill hole, HQ diameter has been drilled to 300'. The contents of such is yet to be assayed.

- G. All work to date performed on STMP#2.
- H. ~~Drill logs and~~ assays to be carried out at a later date. Drill core stored at 9551 Bridgeport Rd., Richmond, B.C.. Some samples taken to private lab for analysis before commercial facilities are employed.
- I. AUTHOR'S QUALIFICATIONS

Lloyd E. Mear

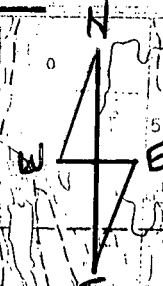
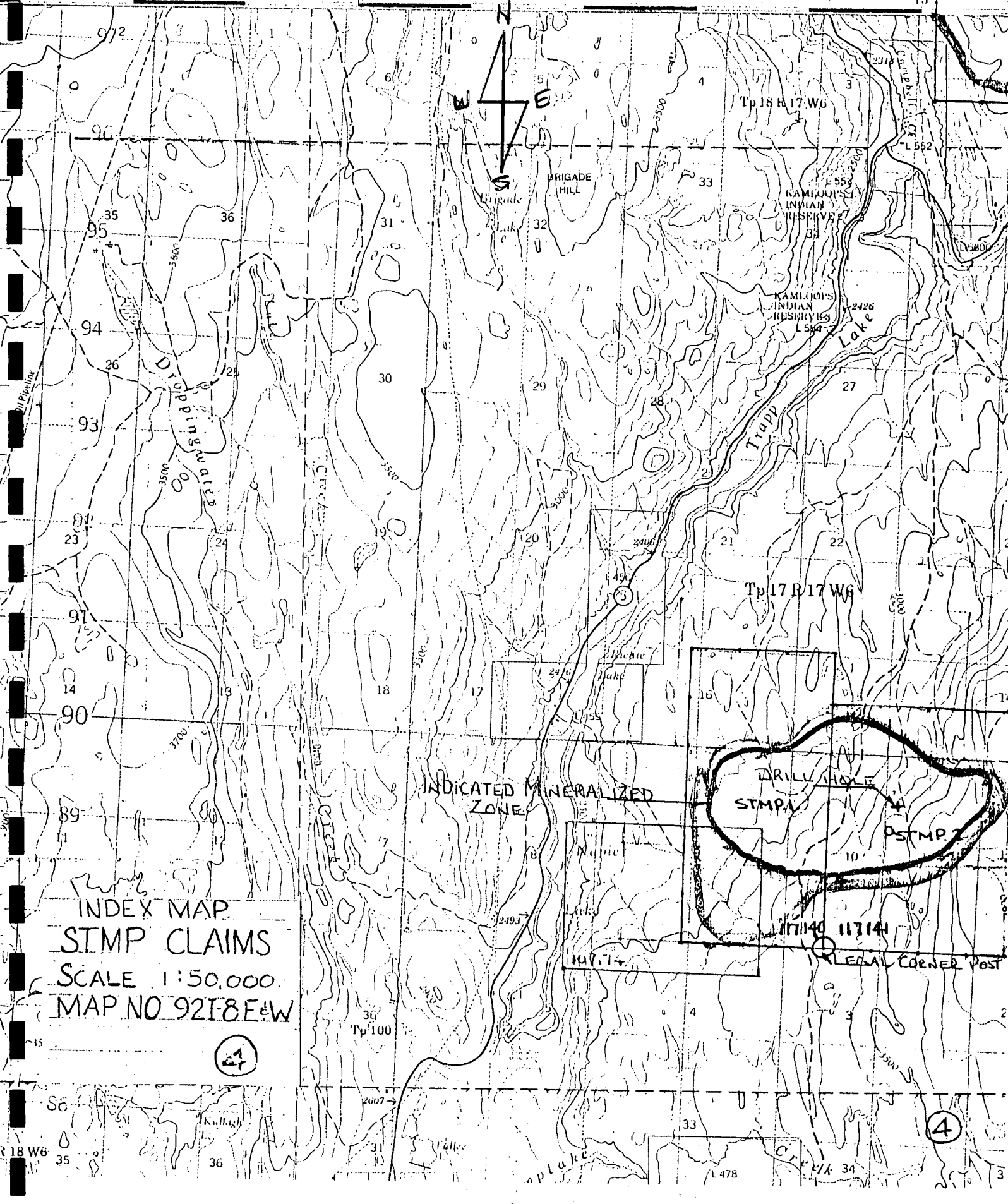
Managed underground mining and milling operation south of Houston, B.C. 1977 - 1978

Owned and operated placer gold operation in Yukon Territories. 1982 - 1985

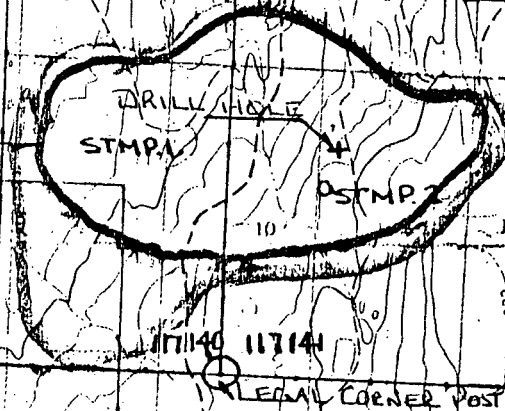
Owned and operated construction company in U.S.A. and Canada 1960 - 1980

Knutsford 18 km

50 66 77 88 99 110 121 132 143 154 165 176 187



INDICATED MINERALIZED ZONE



INDEX MAP
 STMP CLAIMS
 SCALE 1:50,000
 MAP NO 921-8E+W

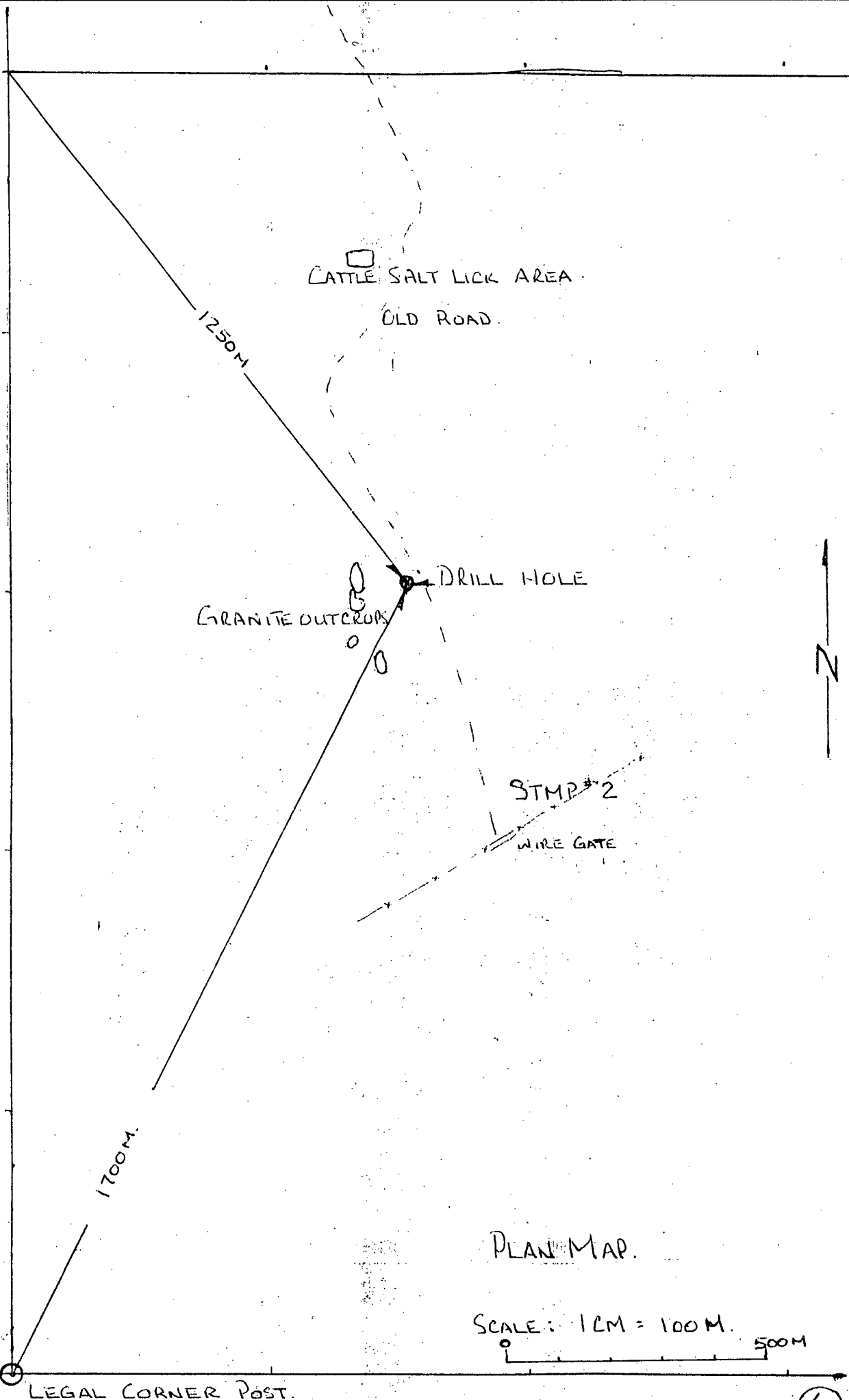
4

4

R 18 W 6

COST STATEMENT

| | | |
|----|--|--------------|
| A. | Contract drilling - \$25.00 per ft. X 300 ft. (Includes water hauling, mobilization & demobilization, core boxing, site rehabilitation.) | \$7,500 |
| | Site rehabilitation - Grass seed, weed control | 200 |
| | Travel, support staff, rancher p.r., etc. | <u>1,500</u> |
| | | \$9,200 |



TMP#1

CATTLE SALT LICK AREA
OLD ROAD.

GRANITE OUTCROPS
DRILL HOLE

STMP #2
WIRE GATE

LEGAL CORNER POST.

PLAN MAP.

SCALE: 1CM = 100M.
500M

10 METERS

GRAPHIC LOG

ALTERATION PRECIPITATES

| | | | | | | | | |
|----------|--------|----------|------------|-----------|--------|------|---------|--------|
| ARGILLIC | PHYLIC | POTASSIC | SILICIFIED | CARBONATE | GYPSUM | CLAY | EPIDOTE | QUARTZ |
|----------|--------|----------|------------|-----------|--------|------|---------|--------|

LITHOLOGY STRUCTURE

DIAMOND DRILL LOG SHEET

HOLE Stmp 90-1 SHEET 1 OF

| DRILLING LOG | | | | | GEOLOGIC LOG | | |
|--------------|------|-----|-----|----------------|--|---|--------------|
| FROM | TO | % | RQD | DRILLING COND. | LITHOLOGY STRUCTURE | ALTERATION | PRECIPITATES |
| 0 | 20 | 99 | | Good | MED GRAINED GRANODIORITE SLIGHT ALTERATION ALONG MINOR FRACTURES. MINOR METALLICS, USUALLY ENCLOSED IN HORNBLEND | SLIGHT ARGILLIC ALONG FRACTURE PLANES. | |
| 20 | 21.5 | 90+ | | Good | SAME COMPOSITION ALTERED BLEACHED GRANODIORITE. CHLORITIC ALTERATION ALONG MINOR FRACTURES | Chloritic | |
| 21.5 | 23 | 90+ | | | | | |
| 23 | 70 | 90+ | | Good | MED GRAINED GRANODIORITE SLIGHT ALTERATION ALONG MINOR FRACTURES. MINOR METALLIC. SECTIONS OF MINOR POTASSIC ALTERATION METALLICS INCREASE. SULPHIDE AND GREY MINERAL. SECTIONS OF POTASSIC ALTERATION SHOW AN INCREASE IN METALLICS, USUALLY INCLUCED WITHIN HORNBLEND. | | |
| 70 | 90 | 90+ | | Good | MED GRAINED GRANODIORITE METALLIC SECTIONS THROUGHOUT SULPHIDES & GREY MINERALIZATION | | |