

20005

LOG NO: 11-20	RD.
ACTION: Date received back from amendment	
FILE NO:	

Assessment report.

1989.

Prince Claim

Drilling report by C. G. Van Houten.

Valuation report by J. E. Harris

Mining Division; Kaslo-Slocan.

NTS 82 K/5W

DDH location; 50°-15'-8" N and 117°-48'-14" W.

H. S. Murphy and J. E. Harris; owners and operators.

C. G. Van Houten; geological consultant.

Date submitted, NOVEMBER 15 1990

Table of contents.

Introduction	p, 1 /
Previous work	2 /
Drill log	3 ✓
Results and conclusions	5 /
Location of core	5 /
Statement of qualifications	6 /
Certificate of analysis	7 /
Report by J. E. Harris	8 /
Property location map	fig. 1 /
Index map	2 /
Claim map	3 /

## Introduction.

The Prince claim borders the Kuskanax River just North of the town of Nakusp, has the Arrow Lakes on the West side and extends approximately 200 m North of the Nakusp Hot Springs road which branches off highway 23.

The claim is easily accessible through highway 23, the Hotsprings road and various minor country roads.

The terrain is generally flat to undulating with patches of forest, logged off land and human habitation, most notably the Royal Coachman Trailer Court.

During the 1989 season Mr. Harris and Murphy were the owners and operators of the project. Mr. Murphy died later on.

The economic potential of the property has been indeterminate. Minor vein type massive lead zinc silver showings have been observed, especially in the trailer court. Pyrite is generally present, which led to the investigation for gold in the drillcore, since no other significant mineralization occurs.

In 1989 only one hole was drilled (BQ) for 125 feet. the purpose of the hole was largely speculative, based on a not very accurately delineated magnetic anomaly, obtained by a quick walk through by a geophysical contractor, known by Mr. Murphy. Mr. Murphy was the sole decision maker with regard to the location of the hole, prior to the writer's involvement. No written data exist regarding the afore mentioned geophysical reconnaissance.

Previous work.

Previous work was mentioned in the following reports:

1984, by J. E. Harris and J. D. Willett.

1986, by J. E. Harris. With prospecting notes by H. Wilson P. Eng, a few assay values.

1988, by H. S. Murphy and J. E. Harris. Mainly regarding groundwork.

No geological reports were included in these reports.

Drill log:  
Azimuth 244.  
Dip 80 degrees.  
Diam. BQ  
Collar elev. 520 m.

1 FT = 30.5 cm

0-50 ft; Silt mixed with granitic boulders.  
50-66 ft; Phyllitic rock, dark greyish blue with white streaks on cross section (2 mm or less wide). Scatterings of sub- to euhedral plagioclase crystals, amounts vary from 0-10 perc., saussuritized xtls. appear to be showing relict zonarity and twinning, orientation mainly parallel to schistosity but also random with occasional deformation (bending), fspr crystals mainly 1 mm or less in size.  
Groundmass appears sericitic and chloritic.  
No evidence of sedimentary structures or significant rock changes throughout the hole.  
Schistosity @ 60 degr. to CA.  
Pyrite occurs as disseminated euhedral to subhedral crystals, up to 2 mm, 5 perc. or less.

60-65 ft; 60 perc. core recovery.  
65-74 ft; 77 perc. core recov.  
66-69.8; no feldspar observed.  
69.8-70.3 ft; greyish green finegrained rock, similar in texture to 66-69.8. Rock more cohesive as a result of the alteration, causing the colour change. Borders of the alteration both crossing and parallel to prevailing schistosity, contacts sharp. Enrichment of up to coarse euhedral to subhedral disseminated py crystals.  
70.3-83 ft; similar to 66-69.8.  
82.6-91 ft; 70 perc. core recovery.  
83-100.6 ft; see 50-66, plagioclase not exceeding 5 perc.  
90-91 ft; gouge and fractured rock, including 0.3 ft of a qtz/calcite vein, possibly with minor scheelite (u.v. light).  
100.6-103 ft; approx 70 perc. of the rock silicified, colour light grey, contacts across and parallel to schistosity and mainly sharp, rock competent and hard. Disseminated py, fine crystalline at least 5 perc..  
103-106 ft; see 66-69.8, py content in places 5-10 perc..  
106-107 ft; 80 perc white vein qtz with irregular contacts, probably in association with fracturing, minor calcite at contacts, no py.  
109-116 ft; 85 perc core recov..  
107.2-118 ft; fracturing to near gouge conditions in places, fractures location for veinlets rich in calcite and minor qtz, in places containing up to coarse euhedral to subhedral py, approx 5 perc., rock as in 50-66.  
118-124 ft: see 83-100.6, some calcite veinlets present. Some kinking and open folding in schistosity  
124-125 ft; slight silicification, no change in colour, more cohesive.

Signed

  
C.G. van Houten.

4

E.M.H. 38.1 m.

The phyllitic rock in the core appears to be volcanic, with a relict texture suggesting either a tuff or a porphyritic flow. The absence of any sedimentary structures, such as bedding, may add to the evidence.

The hole was drilled in rocks previously mapped as part of the Slocan Group (Wheeler and Read 1976), which in this area consists of grey to black phyllite, argillite, quartzite and minor tuffaceous sediments near the top (Wheeler and Read 1976).

The assay samples were taken at selected levels for gold to ascertain whether a full fledged sampling was necessary and pyrite being the only significant ore mineral.

#### Results and conclusions.

The results of the drillhole are not encouraging. Gold readings are minimal, either in quartz veins or the phyllitic rocks. Pb Zn Ag deposits were not encountered.

The scale of the project and its generally speculative (in the geological sense) nature do not allow the drawing of strong conclusions.

More geophysical data may shine more light on the situation. Regional geochemical surveys do not provide encouragement and detailed local geochemical surveys are unlikely to prove useful because of anticipated contamination from human habitation and activity .

#### Location of core.

The core is located in a storage and workshop building at the Boulder Trailer park, lot 1 of 397, Nakusp, BC.

#### Reference.

J. O. Wheeler and P. B. Read; Mineral Deposits, Lardeau West half, BC., Revised compilation by P. B. Read 1976.

Statement of qualifications.

I received my degree in geology ( Msc. equiv. ) at the University of Amsterdam, The Netherlands, in 1969, majoring in petrology, structural geology and stratigraphy. During my studies I contributed to the geological map of the Betic Cordillera (Spain) by mapping a small section thereof.

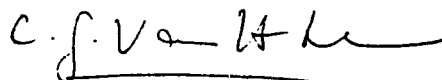
Subsequent experience was obtained with: Canadian Pacific Oil and Gas Ltd.; measuring stratigraphic sections in the Rocky Mountains for one season.

The Granby Mining Co. Ltd.; Geological mapping, prospecting, core logging and thin section work, for 3 years in the Grand Forks (BC) and Germansen Landing area.

Serem Ltd.; similar to above, at Mount Sicker and adjacent areas near Duncan, Vancouver Island, for 3 years.

Riocanex; core logging at the Ayiwin property near Silvertown (BC); for one season.

Signed.



C. G. van Houten.



## SAMPLE ASSAY RESULTS

66.1 - 66.5 Ft, phyllitic, 5 ppb Au.

90.4 - 90.8 Ft quartz - carbonate, 5 ppb Au.

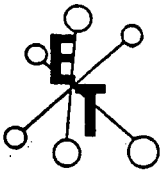
96 - 96.5 Ft phyllitic, traces of py, 5 ppb Au.

100.6 - 101 Ft phyllitic with 8 % py, 5 ppb Au.

102.3 - 102.5 Ft silicified phyllitic with fine disseminated  
py, 5ppb Au.

106.5 - 107 Ft qtz vein, 5 ppb Au.

107.4 - 107.9 Ft Fractured phyllite with qtz - carb veinlets  
5 ppb Au.



# ECO-TECH LABORATORIES LTD.

ASSAYING - ENVIRONMENTAL TESTING  
10041 East Trans Canada Hwy., Kamloops, B.C. V2C 2J3 (604) 573-5700 Fax 573-4557

MAY 2, 1990

## CERTIFICATE OF ANALYSIS ETK 90-95

=====

C.G. VAN HOUTEN  
R.R. 1, SITE 12  
NAKUSP, B.C.  
VOG 1R0

SAMPLE IDENTIFICATION: 7 CORE samples received MAY 2, 1990

-----

ET#	Description	AU (ppb)
95 - 1	P/89 1	5
95 - 2	P/89 2	5
95 - 3	P/89 3	5
95 - 4	P/89 4	5
95 - 5	P/89 5	5
95 - 6	P/89 6	5
95 - 7	P/89 7	5

*Jutta Jealouse*  
ECO-TECH LABORATORIES LTD.  
JUTTA JEALOUSE  
B.C. Certified Assayer

SC90/K1

~~xxxxxxx~~ November 8/90

File #24500-03-AME

Ministry of Energy Mines & Pet. Res.  
Parliament Bldgs.  
Victoria B.C.

Dear Sir;

Re; Your letter dated Sept. 24/90 to do with the Princess mining claims in the vicinity of Nakusp.

As you no doubt have ascertained from my failure to complete the mining forms to your satisfaction, that I am a mere neophyte at this mining business. To explain I was in partnership with H.S. Murphy, also of Nakusp, who was the 'Operator' and took care of all the paper work as he was well informed in this area after years at it. Unfortunately he is no longer with us having passed away a few weeks ago. I have followed his instructions re; equipment used and allowable expenses for vehicles, chain saws, size of bits, etc. I have checked the information supplied by the Chamber of Mines re; the expenses which seem to be in order. Our recording fees covering the period to April 30, 1994 have been paid, however if you are not going to accept our application as submitted please return them to me.

For your information, this vein was discovered while levelling off land for a trailer court, and was quite rich in silver, lead etc. With the trailer court in operation it is necessary for us to locate the lead out ~~side~~ side their boundary, which is a matter of 50' approx.

The diamond driller resided in New Denver and commuted from there. His price of \$24.00 per foot included his transportation, his truck, compressor and drilling rig. Thus there was no food or accommodation expense to us. As already reported it was B.Q. core and drilled 125'. The drill hole is well plugged, and can easily be checked for depth. There was a 24 hr. standby to cement hole for 50', but we claimed just a fraction of this as we did not need it for a 3yr. extension of the claims. We used a magnetometer before ~~the~~ drilling, hoping to pick up the lead from the trailer court. The machine picked up very strong readings and we drilled there. As you will see by the assays the results are negative so far.

'In preparation and conclusion' that we do no further drilling in that vicinity. Location of core, stored under cover in Nakusp.

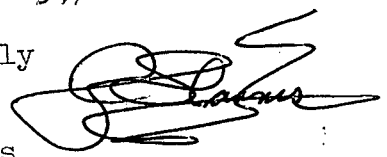
Hours of Labour-

Oct. 19	2hrs.
20	4"
21	
22	4 "
23	
24	4 "
25	<u>2 "</u>

Total 16 hrs. @ \$10.00 per hr.

Owner of claims J.E.Harris - P.O.Box 42, Nakusp B.C.  
Work paid for by- H.S.Murphy 50%  
J.E.Harris 50%

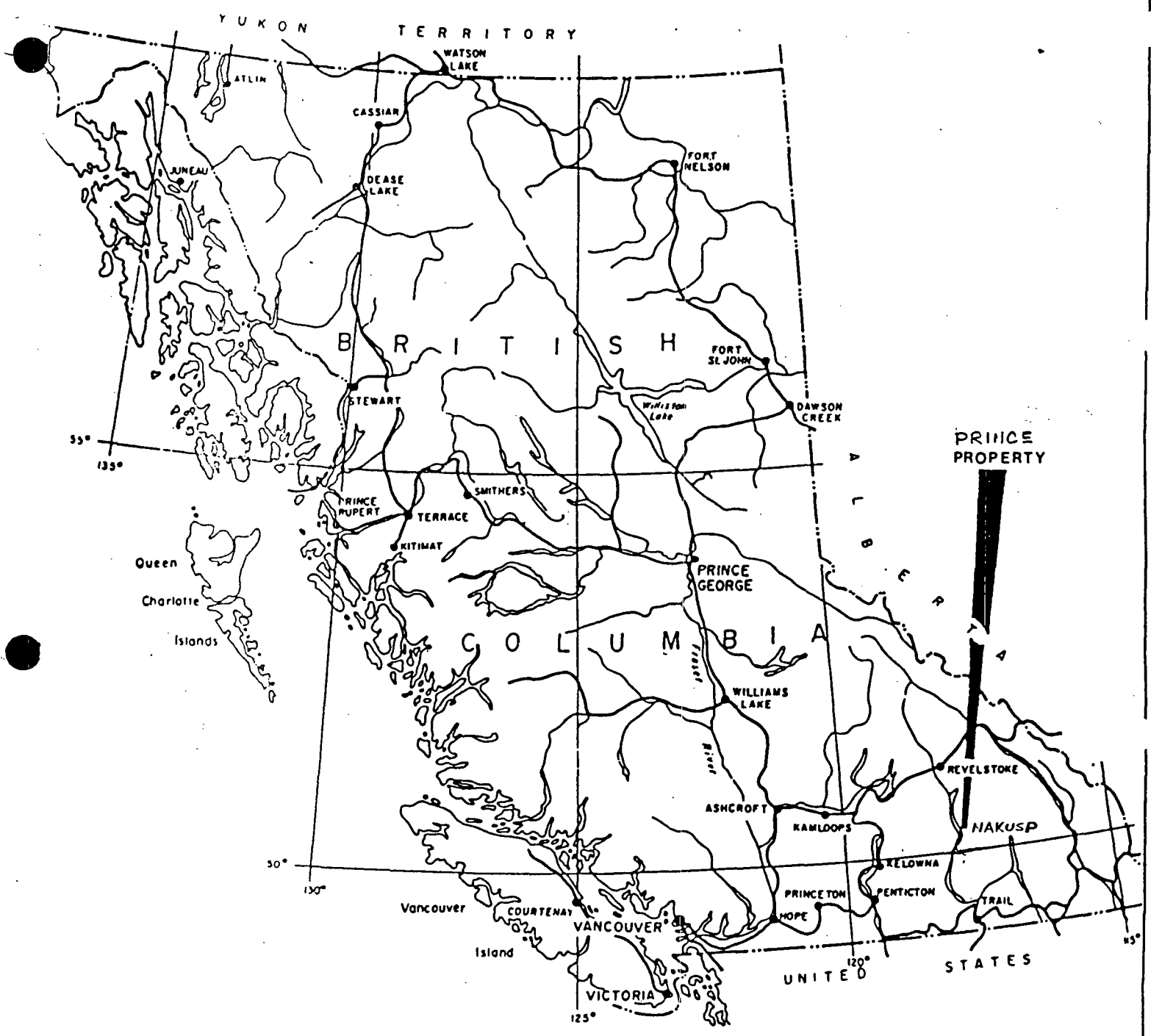
Yours truly



J.E.Harris

# COST STATEMENT

TYPE OF WORK	VALUE OF WORK		
(Specify Physical (include details), Prospecting, Geological, etc.)	Physical	*Prospecting	*Geological etc.
GEOLOGIST			124.
LABOUR 1 man @ \$10/hr 16 hrs			160
TOTAL CORING BQ CORE 125 @ 24.00 PER FT.			3000
6 DAYS 4X4 @ 40.00 PER DAY			240
FIELD CHARGES			
10 HRS @ \$75.00 PER. HR (FIELD TIME)			
CEMENTING HOLE THROUGH 5 FT. OVER BURDEN (BOULDERS) ETC.			750
DRILL CORES UNDER COVER, AND ARE AVAILABLE FOR INSPECTION ANY TIME		Report to follow within 90 days	
<del>RES</del> TOTALS	A	+ B	4274 D
			E



PRINCE PROPERTY  
 NTS 82K-5W  
 PROPERTY LOCATION MAP

0 100 200 MILES  
 0 100 200 300 KILOMETRES

FIG 1

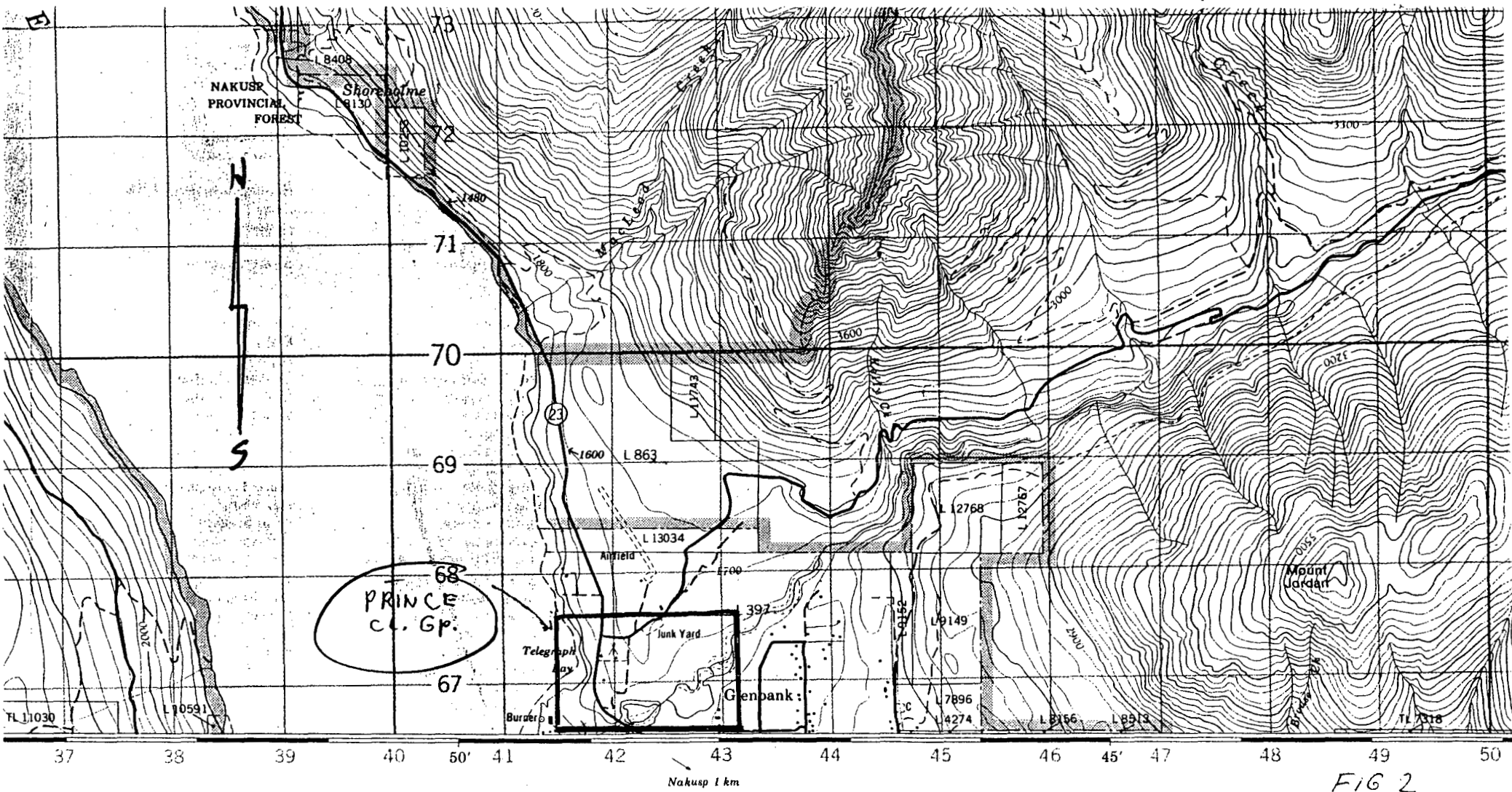


FIG 2

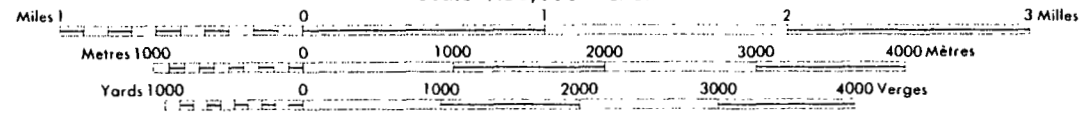
<b>Roads:</b>	<b>Routes:</b>		
hard surface, all weather .....	pavée, toute saison .....	<u>dual highway</u>	<u>more than 2 lanes</u>
		2 chaussées séparées	plus de 2 voies
hard surface, all weather .....	pavée, toute saison .....	<u>2 lanes</u>	<u>less than 2 lanes</u>
		2 voies	moins de 2 voies
loose or stabilized surface, all weather .....	gravier, aggloméré, toute saison .....	<u>2 lanes or more</u>	<u>less than 2 lanes</u>
		2 voies ou plus	moins de 2 voies
loose surface, dry weather .....	de gravier, temps sec .....		
unclassified streets .....	rues hors classe .....		
cart track .....	de terre .....		
trail, cut line or portage .....	sentier, percée ou portage .....		

FOR COMPLETE REFERENCE SEE REVERSE SIDE    POUR UNE LISTE COMPLÈTE DES SIGNES, VOIR AU VERSO

# ST LEON CREEK (82 K/5)

KOOTENAY LAND DISTRICT  
BRITISH COLUMBIA (INDEX MAP)

Scale 1:50,000 Échelle



MAP OF THE PRINCE  
CLAIM GROUP  
NAKUSP

GEOLOGICAL BRANCH  
ASSESSMENT REPORT

20,005

SEE LEGEND ↓

Telegraph

Bay

BUILDING  
CONTOURS AND ELEVATION 500  
APPROX. CONTOUR  
WOODED AREA  
SWAMP

DEPRESSION  
SCRUB  
ORCHARD

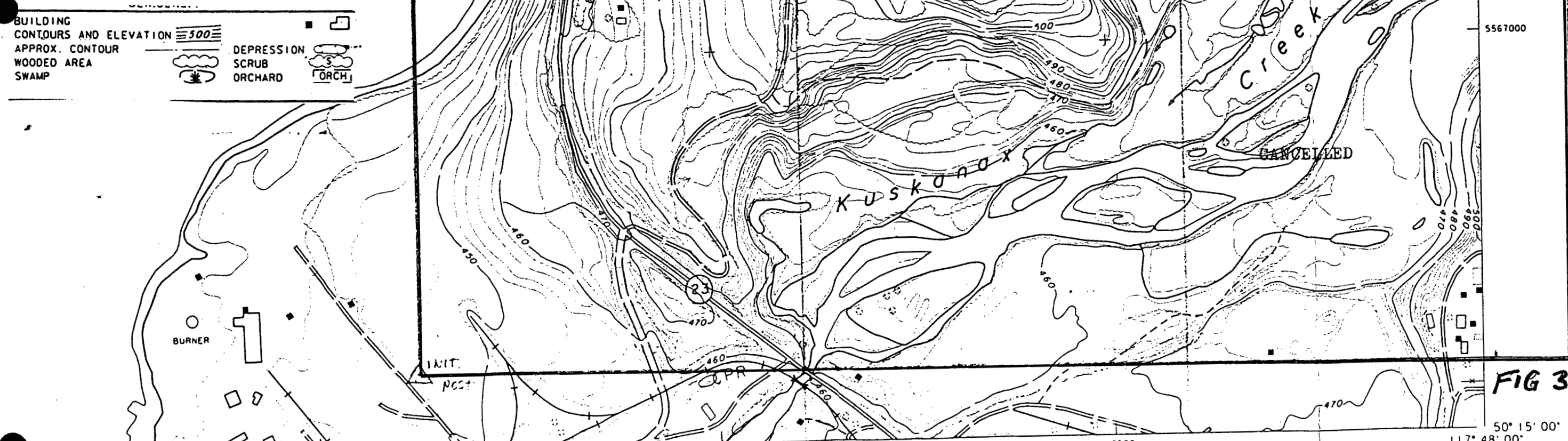


FIG 3

50° 15' 00"  
117° 48' 00"

21.2.4

ROADS PAVED ROUGH TRAIL   
GRAVEL ABAND.   
RAILWAY POWER LINE ON POLES ON TOWERS   
FENCE FLUME

SCALE 1:5000  
50 0 50 100 150 200  
METRES  
CONTOUR INTERVAL 2 METRES

PLANIMETRIC DIGITAL  
CONTOUR SCRIBECOAT

AVAILABLE LAYERS  
PLANIMETRIC  
CONTOUR  
CADASTRAL

SEE INDEX 82K PROJECT NO. 84-039

82K.021.4.2