

LOG NO:	0607	RD.
ACTION:		
FILE NO:		

Maps and Sections to Accompany
1989 Geological and Diamond Drilling Report
on the
Dolly Varden Property
(GOLD BELT)

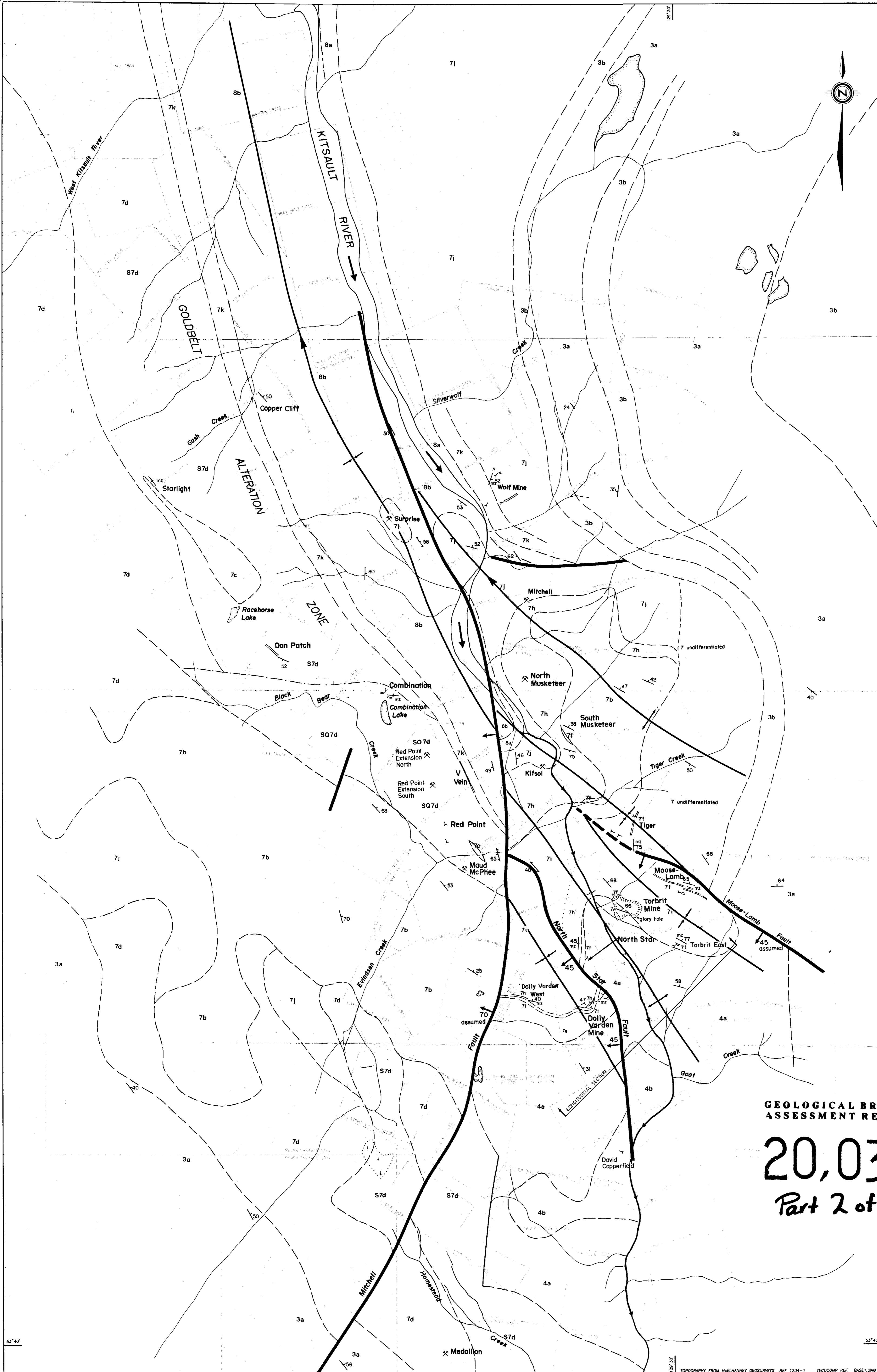
VOLUME 2 of 2

May, 1990

**GEOLOGICAL BRANCH
ASSESSMENT REPORT**

20,033

Part 2 of 2



LITHOLOGIES

- QUATERNARY**
- 21 Alluvium
 - 20 Glacial drift, colluvium
- INTRUSIVE ROCKS**
- TERTIARY**
- Eocene and Younger**
- 11 Lamprophyre, basalt dykes
 - 10 Diorite, microdiorite
- Volcanic and Sedimentary Rocks**
- Lower to Middle Jurassic**
- TOARCIAN TO BAJOCIAN : SALMON RIVER FORMATION**
- 8b Siltstone, shale, and minor sandstone
 - 8a Basal fossiliferous wacke
- TOARCIAN : PARTIAL EQUIVALENTS OF MT DILWORTH / BETTY CREEK FORMATIONS**
- 7k Siliceous, pyritic, sericitic felsic pyroclastic rocks
 - 7j Pale green andesite ash tuff
 - 7i Maroon and green andesite lapilli tuff, ash tuff. Locally carbonaceous
 - 7h Grey and greenish grey andesite lapilli tuff. Commonly contains carbonate-chlorite (-sericite) altered andesite fragments in a strongly chloritic matrix. The base of this unit is locally comprised of finely laminated chloritic ash tuff
 - 7g Polyolithic exhalitic breccia. A debris flow facies containing fragments of volcanics, chert, jasper, sulfates, carbonates, and sulfides in a chloritic or sericitic tuffaceous matrix
 - 7f Exhalite : Volcanic exhalative silica, sulfates, carbonates, sulfides, oxides, and native silver. Includes some debris flow facies with an exhalite matrix
 - 7e Green andesite shard tuff, includes some epiclastics
 - 7d Grey-green porphyritic andesite lapilli tuff, minor flows and flow breccia. Partly amygdaloidal, commonly trachytic.
 - 7c Black siltstone, argillite
 - 7b Maroon and green andesite lapilli tuff
 - 7a Maroon coarsely graded-bedded volcanic sandstone marker
- SYN-VOLCANIC AND EXHALATIVE ALTERATION FACIES**
- Chst Chlorite-pyrite-quartz-carbonate stockwork, most commonly a footwall stringer zone near exhalite horizons
 - Qst Quartz-chalcedony-chlorite-carbonate-pyrite-chalcopyrite stockwork +/- precious metals (Goldbelt Zone)
 - ChBx Hydrothermal breccia : altered rock fragments in a matrix of dark chlorite and pyrite. (Goldbelt Zone)
 - Kfp Potassium feldspar, pervasive (Goldbelt Zone)
 - SQ Sericite-pyrite pervasive alteration, with abundant quartz stringers (Goldbelt Zone)
 - S Sericite-pyrite, pervasive. Occurs in Goldbelt Zone and also in hangingwall and footwall of exhalite horizons
- SINEMURIAN TO PLEISBACHIAN(?) : UNUK RIVER FORMATION**
- 4b Green and maroon porphyritic andesite - probably massive flows, in part might be intrusive equivalent of 7d
 - 4a Green and maroon basaltic andesite ash tuff and lapilli tuff
- UPPER TRIASSIC**
- 3b Green and purple andesite breccia with minor siltstone, sandstone, and conglomerate
 - 3a Black siltstone

ABBREVIATIONS

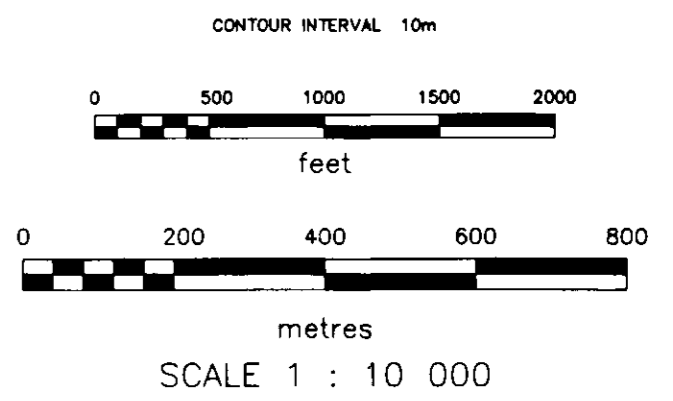
- ba barite
- ca calcite
- cp chalcopryite
- gn galena
- hem hematite
- qz quartz
- sp sphalerite
- sc sericite
- py pyrite
- chl chlorite

SYMBOLS

- geological boundary defined, approximate, assumed
- fault defined, approximate, assumed
- adit
- showing
- bedding, jointing, foliation
- axial plane plunge direction of fold axis
- altitude of mineralization

GEOLOGICAL BRANCH ASSESSMENT REPORT

20,033
Part 2 of 2



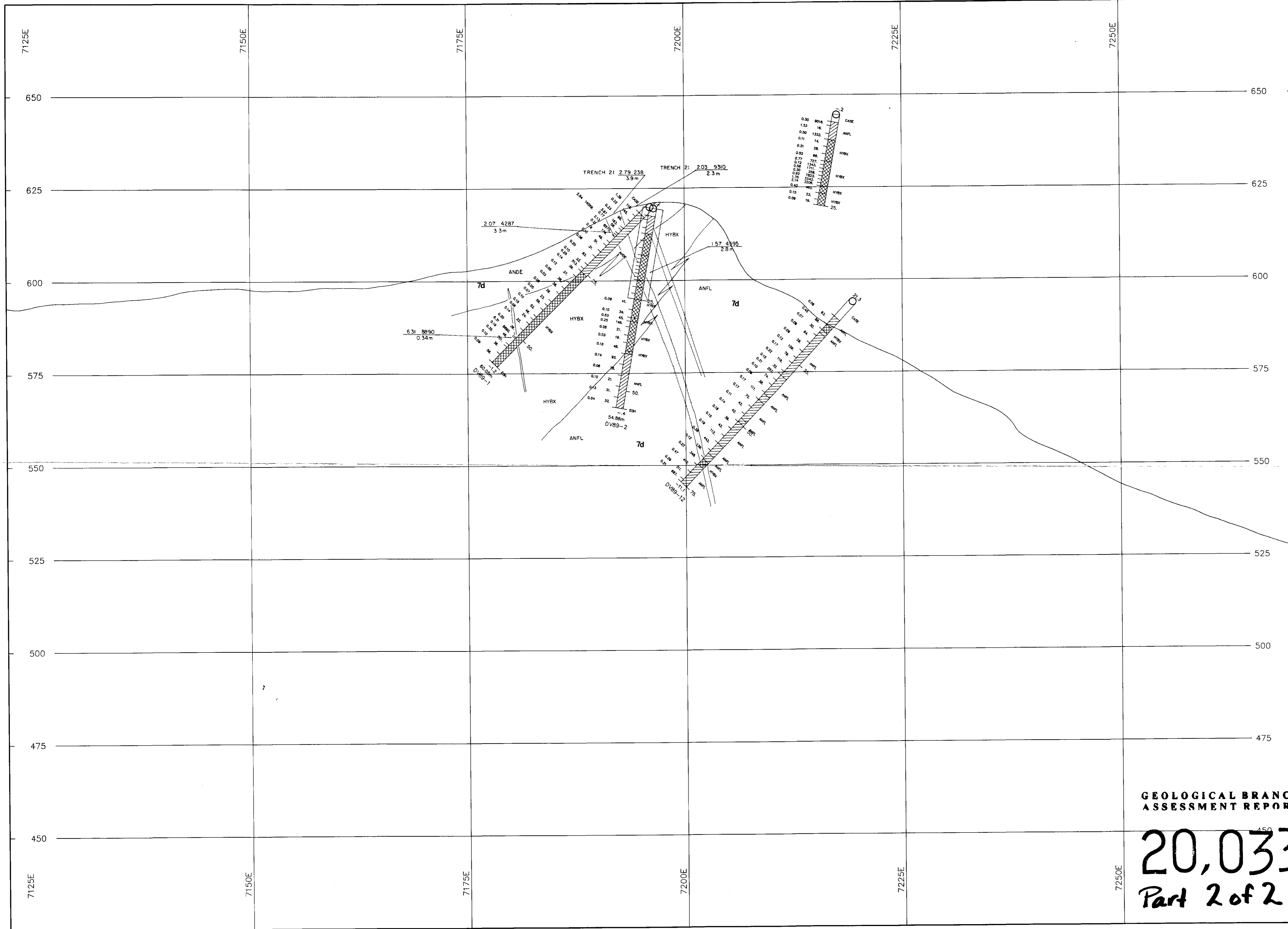
DOLLY VARDEN MINERALS INC.

Report by:
TD/PM/WM
Date:
January /90

DOLLY VARDEN PROJECT
Property Geology
Compilation

Mining Division
Skeena
NTS:
103P/11-12

Tecumcomp Geological Inc. 1.



LEGEND

GEOLOGICAL UNITS

- Overburden (Casing)
- DYKE - Basaltic Dyke
- LAMP - Lamprophyre Dyke
- DIDK - Diorite Dyke
- MODI - Monzo Diorite - Diorite
- Vein
- Mineralized Zone
- QZST - Quartz Vein Stockwork Breccia Zone
- QZCS - Quartz-Chlorite Stockwork Zone
- QZBX - Quartz-Pyrite Breccia
- HYBX - Hydrothermal Breccia
- Undifferentiated Andesite Tuffs and Flows
 - ANDE Andesite
 - ANFL Andesite Flow
 - ANFT Andesite Tuff, Lapilli Tuff
 - ANCT Andesite Crystal Lithic Tuff
 - ANHB Andesite Hornblende Plagioclase Porphyry
 - ANAG Andesite Agglomerate (Fragmental)
 - MYAN Mylonitic Hornblende - Feldspar Andesite
 - MUDT Muddy Tuff

Units 7b,7d,10 & 11 correspond to legend of Geology Compilation Map, map No.1

STRUCTURE

- F / FALT - Fault or Fault Zone

Assay Geochem
 Au G/T Cu ppm
 2.42 443

Section Elevations in metres.

SCALE 1:500

10 0 20 40
 METRES

**GEOLOGICAL BRANCH
ASSESSMENT REPORT**

20,033
Part 2 of 2

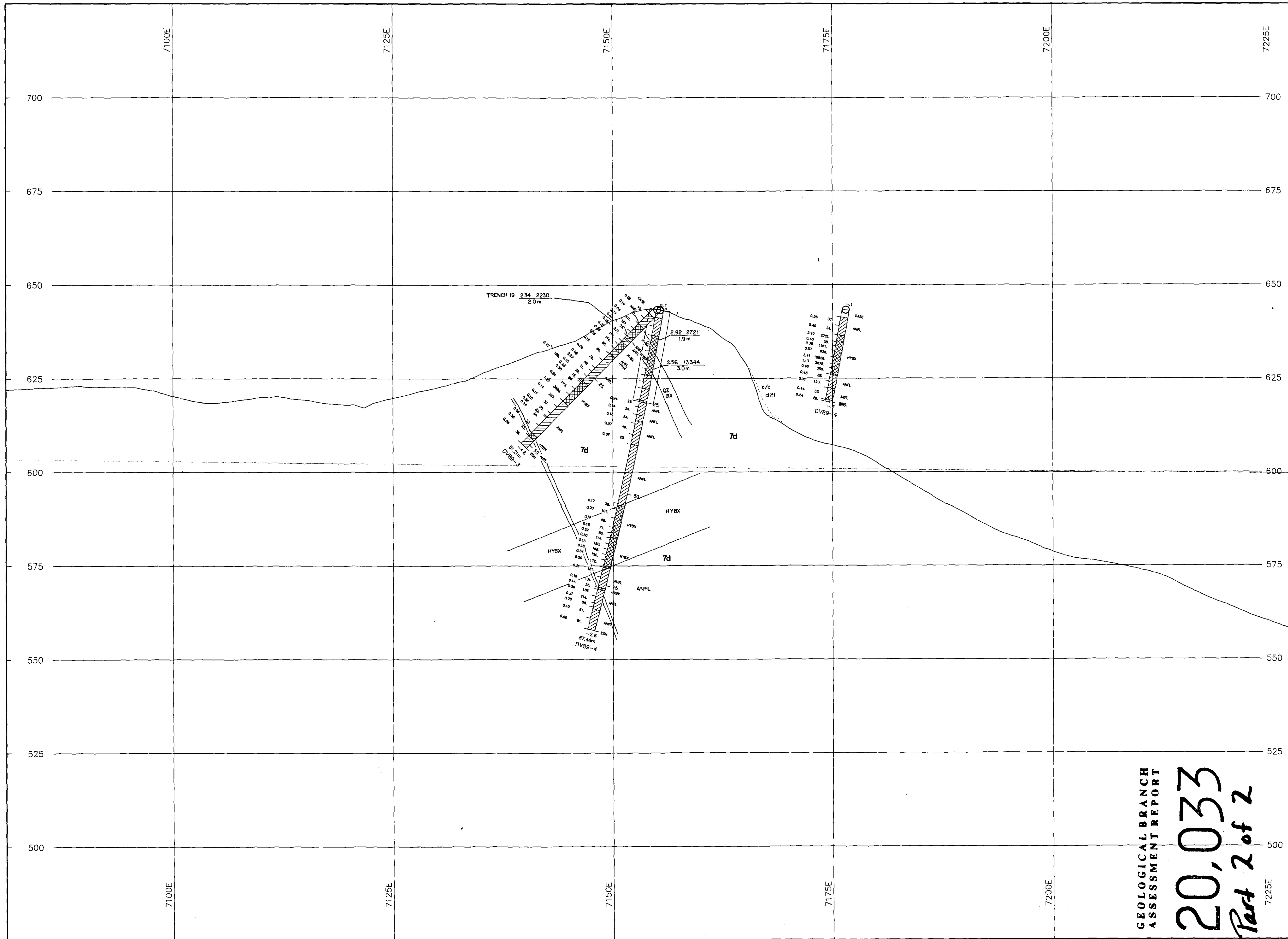
DOLLY VARDEN MINERALS INC.

Report by: _____
 Date: _____

DOLLY VARDEN PROJECT
 DDH SECTION
 DV89-1, DV89-2, DV89-12
 LOOKING NORTHWEST
 SECTION AT 205 AZIMUTH

Mining Division
 Steveno
 NTS:
 103P/11-12

Tecucomp Geological Inc. Map: **2**



LEGEND

GEOLOGICAL UNITS

- Overburden (Casing)
- DYKE - Basaltic Dyke
- LAMP - Lamprophyre Dyke
- DIDK - Diorite Dyke
- MODI - Monzo Diorite - Diorite
- Vein
- Mineralized Zone
- QZST - Quartz Vein Stockwork Breccia Zone
- QZCS - Quartz-Chlorite Stockwork Zone
- QZBX - Quartz-Pyrite Breccia
- HYBX - Hydrothermal Breccia
- Undifferentiated Andesite Tuffs and Flows
 - ANFL Andesite Flow
 - ANCT Andesite Tuff, Lapilli Tuff
 - ANHB Andesite Crystal Lithic Tuff
 - ANAG Andesite Homblende Plagioclase Porphyry
 - MYAN Andesite Agglomerate (Fragmental)
 - MUDT Muddy Tuff

Units 7b,7d,10&11 correspond to legend of Geology Compilation Map, map No.1

STRUCTURE

- F / FALT - Fault or Fault Zone

Assay Geochem
 Au G/T Cu ppm
 2.42 443

Section Elevations in metres.

SCALE 1:500

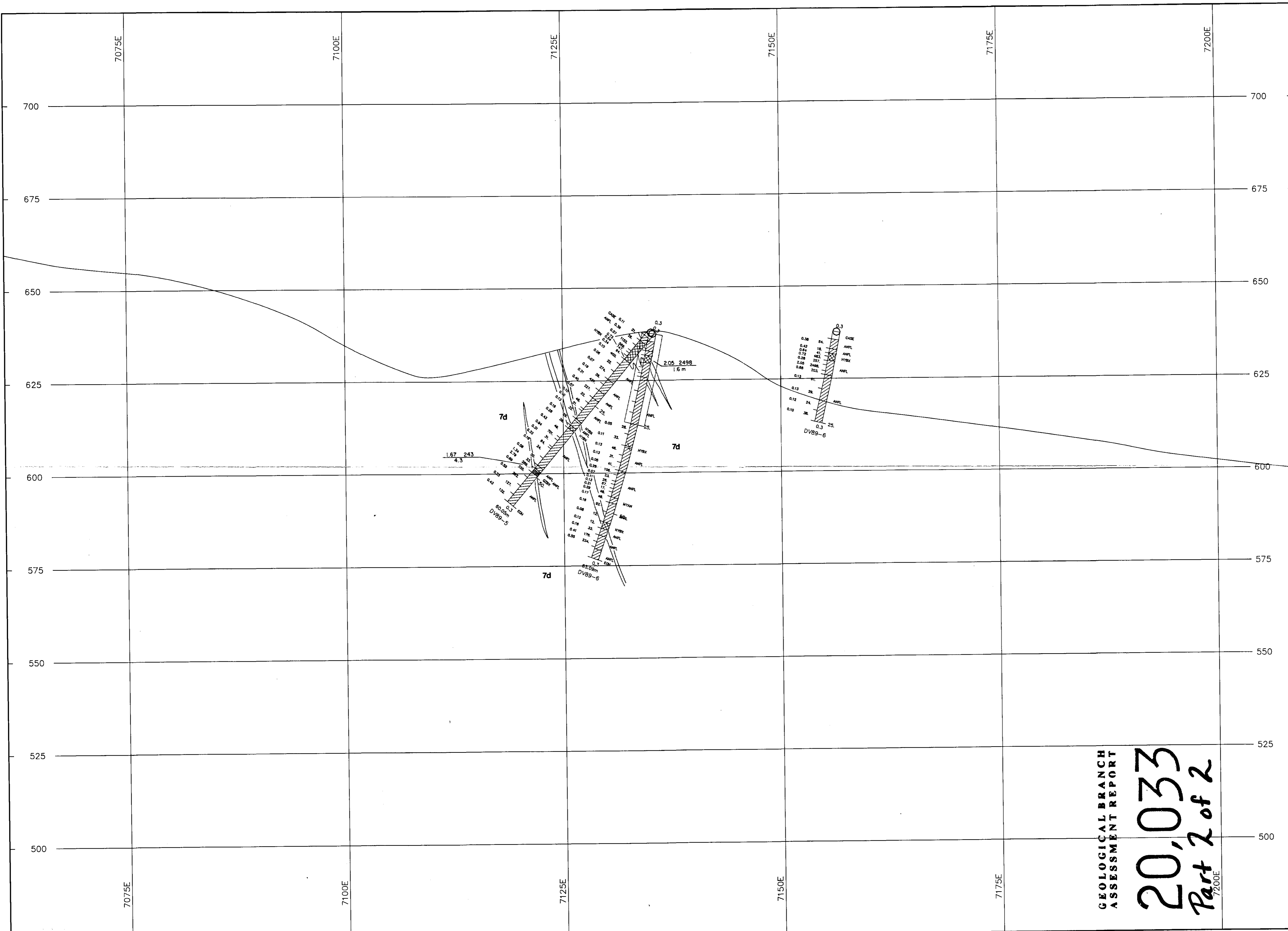
METRES

DOLLY VARDEN MINERALS INC.

Report by: **DOLLY VARDEN PROJECT**
 Date: DDH SECTION
 DV89-3, DV89-4
 LOOKING NORTHWEST
 SECTION AT 205 AZIMUTH

Mining Division
 Sheets: **Tecumac Geological Inc.** Map: **3**
 NTS: 103P/11-12

**GEOLOGICAL BRANCH
 ASSESSMENT REPORT**
20,033
Part 2 of 2



LEGEND

GEOLOGICAL UNITS

- Overburden (Casing)
- DYKE - Basaltic Dyke
- LAMP - Lamprophyre Dyke
- DIDK - Diorite Dyke
- MODI - Monzo Diorite - Diorite
- Vein
- Mineralized Zone
- QZST - Quartz Vein Stockwork Breccia Zone
- QZCS - Quartz-Chlorite Stockwork Zone
- QZBX - Quartz-Pyrite Breccia
- HYBX - Hydrothermal Breccia
- Undifferentiated Andesite Tuffs and Flows
 - ANDE Andesite
 - ANFL Andesite Flow
 - ANTF Andesite Tuff, Lapilli Tuff
 - ANCT Andesite Crystal Lithic Tuff
 - ANHB Andesite Hornblende Plagioclase Porphyry
 - ANAG Andesite Agglomerate (Fragmental)
 - MYAN Mylonitic Hornblende - Feldspar Andesite
 - MUDT Muddy Tuff

Units 7b, 7d, 10 & 11 correspond to legend of Geology Compilation Map, map No. 1

STRUCTURE

- F / FALT - Fault or Fault Zone

Assay Geochem
 Au G/T Cu ppm
 2.42 443

Section Elevations in metres.

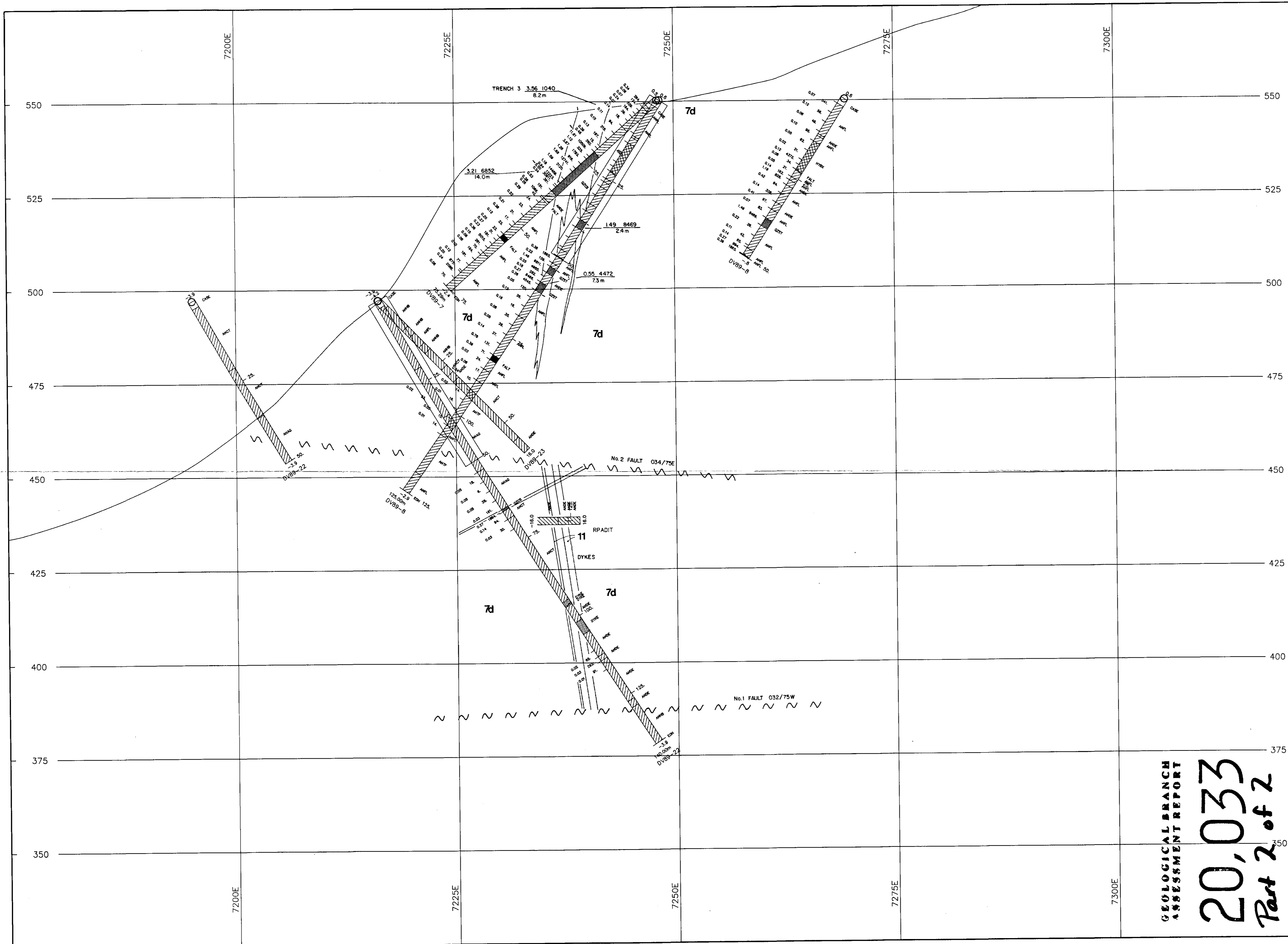
SCALE 1:500

METRES

**GEOLOGICAL BRANCH
 ASSESSMENT REPORT**
20,033
Part 2 of 2
7200E

DOLLY VARDEN MINERALS INC.

Report by:	DOLLY VARDEN PROJECT
Date:	DDH SECTION DV89-5, DV89-6 LOOKING NORTHWEST SECTION AT 205 AZIMUTH
Mining Division Skeena NTS: 103P/11-12	Tecucomp Geological Inc. Map: 4



LEGEND

GEOLOGICAL UNITS

- Overburden (Casing)
- DYKE - Basaltic Dyke
- LAMP - Lamprophyre Dyke
- DIDK - Diorite Dyke
- MODI - Monzo Diorite - Diorite
- Vein
- Mineralized Zone
- QZST - Quartz Vein Stockwork Breccia Zone
- QZCS - Quartz-Chlorite Stockwork Zone
- QZBX - Quartz-Pyrite Breccia
- HYBX - Hydrothermal Breccia
- Undifferentiated Andesite Tuffs and Flows
 - ANDE Andesite
 - ANFL Andesite Flow
 - ANTF Andesite Tuff, Lapilli Tuff
 - ANCT Andesite Crystal Lithic Tuff
 - ANHB Andesite Hornblende Plagioclase Porphyry
 - ANAG Andesite Agglomerate (Fragmental)
 - MYAN Mylonitic Hornblende - Feldspar Andesite
 - MUDT Muddy Tuff

Units 7b,7d,10B&11 correspond to legend of Geology Compilation Map, map No.1

STRUCTURE

- F / FALT - Fault or Fault Zone

Assay Geochem
 Au G/T Cu ppm
 2.42 443

Section Elevations in metres.

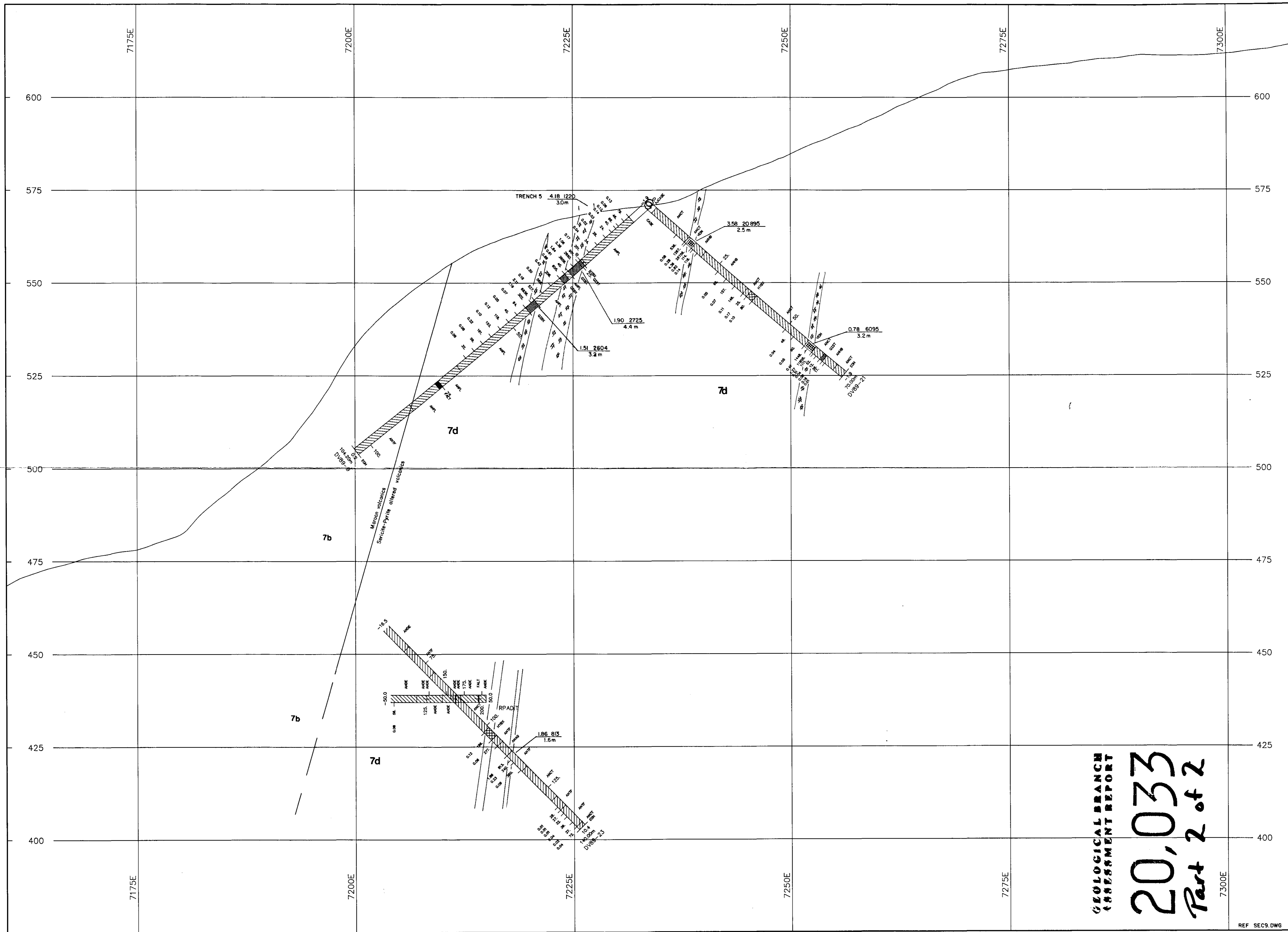
SCALE 1:500

10 0 20 40
 METRES

**GEOLOGICAL BRANCH
 ASSESSMENT REPORT**
20,033
Part 2 of 2

DOLLY VARDEN MINERALS INC.

Report by:	DOLLY VARDEN PROJECT
Date:	DDH SECTION DV89-7,8 DV89-22,23 LOOKING NORTHWEST SECTION AT 205 AZIMUTH
Mining Division Skeena NTS:	Tecucomp Geological Inc.
103P/11-12	5



LEGEND

GEOLOGICAL UNITS

- Overburden (Casing)
- DYKE - Basaltic Dyke
- LAMP - Lamprophyre Dyke
- DIDK - Diorite Dyke
- MODI - Manzo Diorite - Diorite
- Vein
- Mineralized Zone
- QZST - Quartz Vein Stockwork Breccia Zone
- QZCS - Quartz-Chlorite Stockwork Zone
- QZBX - Quartz-Pyrite Breccia
- HYBX - Hydrothermal Breccia
- Undifferentiated Andesite Tuffs and Flows
 - ANDE Andesite
 - ANFL Andesite Flow
 - ANTF Andesite Tuff, Lapilli Tuff
 - ANCT Andesite Crystal Lithic Tuff
 - ANHB Andesite Hornblende Plagioclase Porphyry
 - ANAG Andesite Agglomerate (Fragmental)
 - MYAN Mylonitic Hornblende - Feldspar Andesite
 - MUDT Muddy Tuff

Units 7b, 7d, 10 & 11 correspond to legend of Geology Compilation Map, map No.1

STRUCTURE

- F / FALT - Fault or Fault Zone

Assay	Geochem
Au G/T	Cu ppm
2.42	443

Section Elevations in metres.

SCALE 1:500

METRES

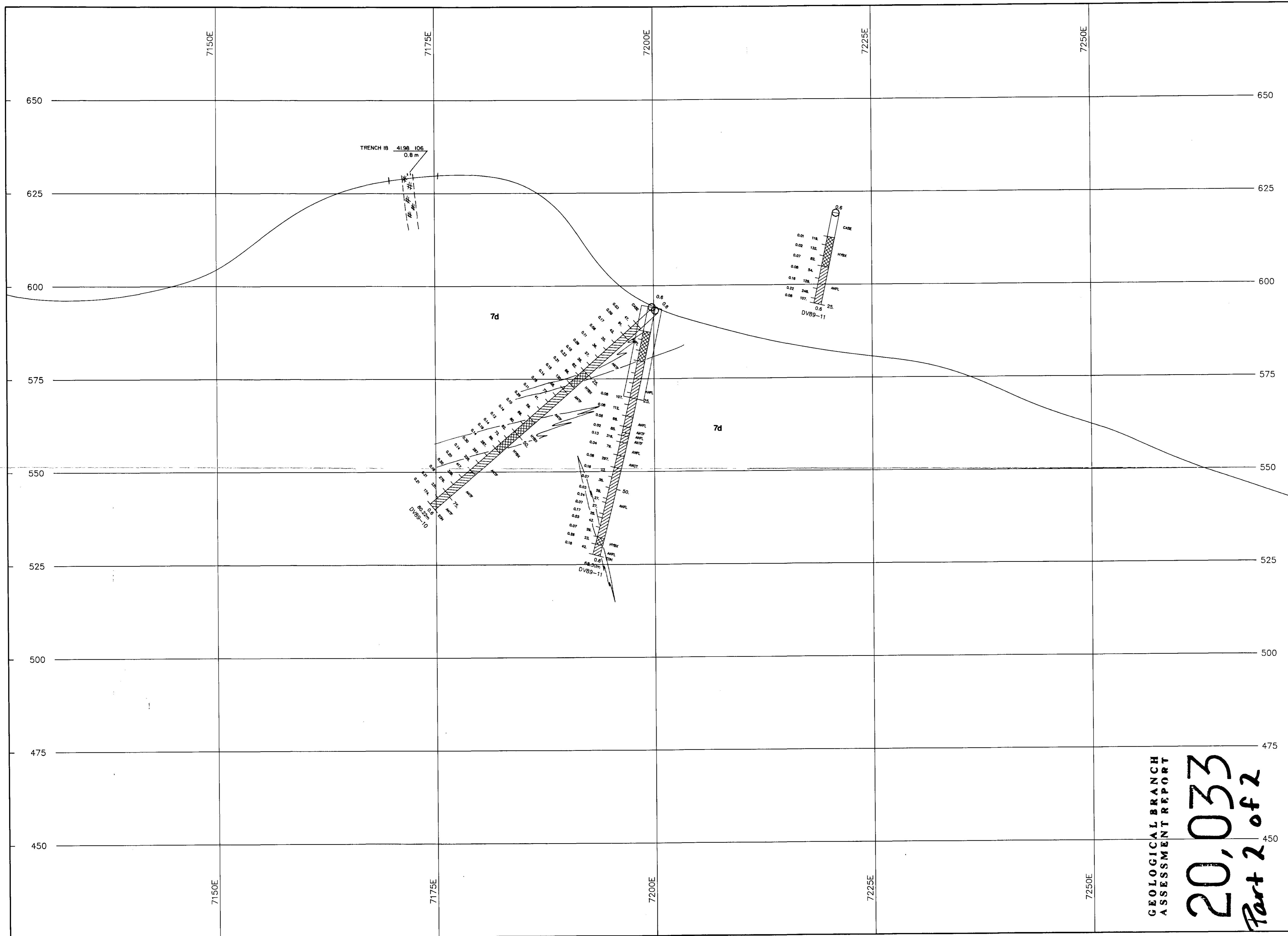
DOLLY VARDEN MINERALS INC.

Report by:	DOLLY VARDEN PROJECT
Date:	
Mining Division	DDH SECTION
Sheeno	DV89-9, DV89-21, DV89-23
NTS:	LOOKING NORTHWEST
103P/11-12	SECTION AT 205 AZIMUTH
	Tecucomp Geological Inc.

Map: **6**

REF SEC9.DWG

GEOLOGICAL BRANCH
ASSESSMENT REPORT
20,033
Part 2 of 2



LEGEND

GEOLOGICAL UNITS

- Overburden (Casing)
- DYKE - Basaltic Dyke
- LAMP - Lamprophyre Dyke
- DIK - Diorite Dyke
- MODI - Monzo Diorite - Diorite
- Vein
- Mineralized Zone
- QZST - Quartz Vein Stockwork Breccia Zone
- QZCS - Quartz-Chlorite Stockwork Zone
- QZBX - Quartz-Pyrite Breccia
- HYBX - Hydrothermal Breccia
- Undifferentiated Andesite Tuffs and Flows
 - ANDE Andesite
 - ANFL Andesite Flow
 - ANTF Andesite Tuff, Lapilli Tuff
 - ANCT Andesite Crystal Lithic Tuff
 - ANHB Andesite Homblende Plagioclase Porphyry
 - ANAG Andesite Agglomerate (Fragmental)
 - MYAN Mylonitic Homblende - Feldspar Andesite
 - MUDT Muddy Tuff

Units 7d, 7f, 10 & 11 correspond to legend of Geology Compilation Map, map No. 1

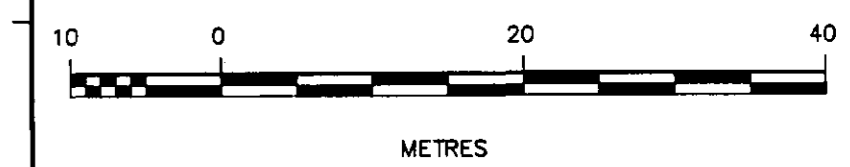
STRUCTURE

- F / FALT - Fault or Fault Zone

Assay	Geochem
Au G/T	Cu ppm
2.42	443

Section Elevations in metres.

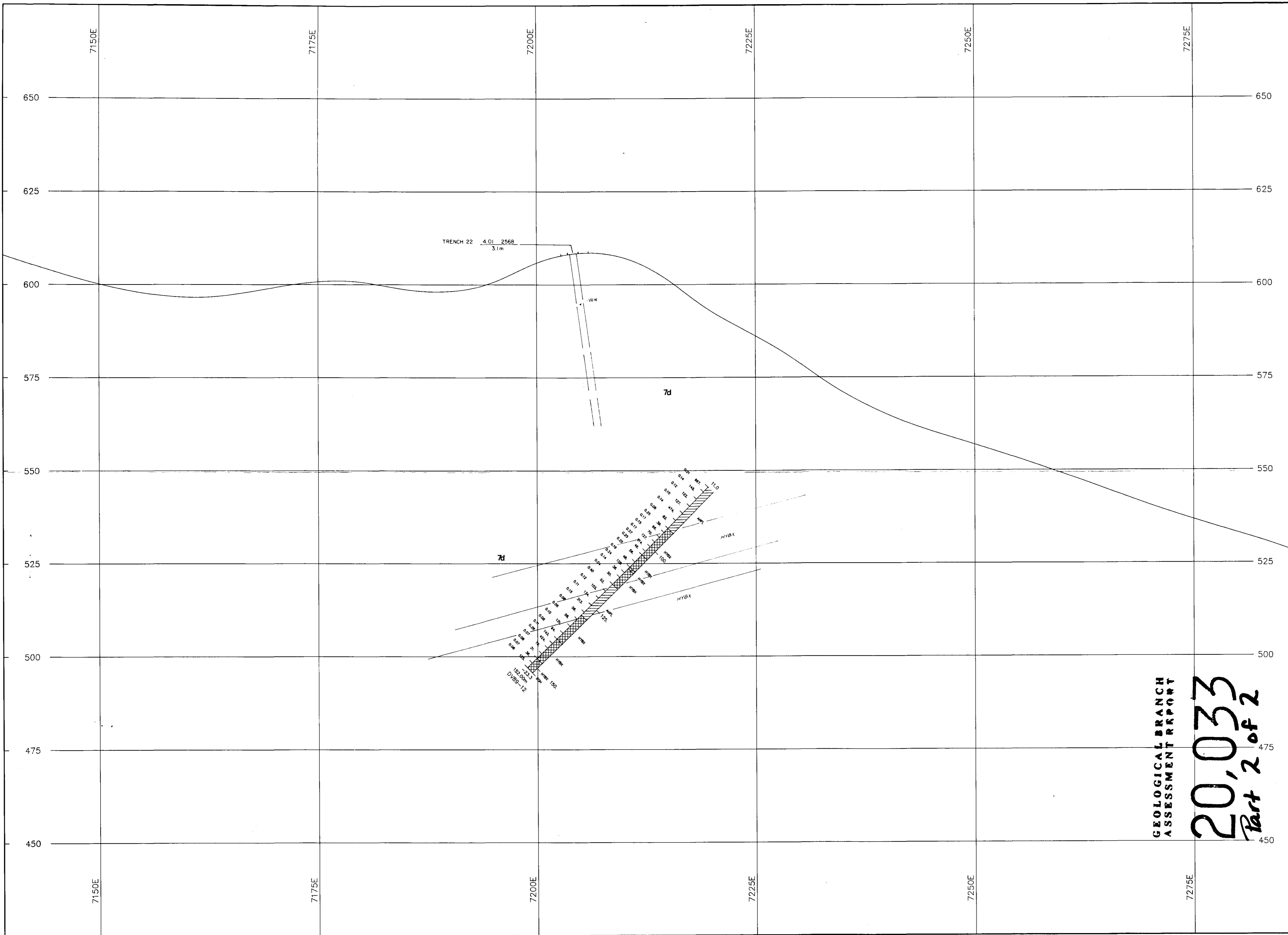
SCALE 1:500



DOLLY VARDEN MINERALS INC.

Report by:	DOLLY VARDEN PROJECT
Date:	DDH SECTION DV89-10, DV89-11 LOOKING NORTHWEST SECTION AT 205 AZIMUTH
Mining Division Skanska NTS: 103P/11-12	Tecucomp Geological Inc. Map: 7

**GEOLOGICAL BRANCH
ASSESSMENT REPORT
20,033
Part 2 of 2**



LEGEND

GEOLOGICAL UNITS

Overburden (Casing)

TERTIARY

DYKE - Basaltic Dyke
 LAMP - Lamprophyre Dyke
 DIDK - Diorite Dyke
 MODI - Monzo Diorite - Diorite

Vein
 Mineralized Zone

QZST - Quartz Vein Stockwork Breccia Zone
 QZCS - Quartz-Chlorite Stockwork Zone
 QZBX - Quartz-Pyrite Breccia
 HYBX - Hydrothermal Breccia

Undifferentiated Andesite Tuffs and Flows

ANDE Andesite
 ANFL Andesite Flow
 ANTF Andesite Tuff, Lapilli Tuff
 ANCT Andesite Crystal Lithic Tuff
 ANHB Andesite Hornblende Plagioclase Porphyry
 ANAG Andesite Agglomerate (Fragmental)
 MYAN Mylonitic Hornblende - Feldspar Andesite
 MUDT Muddy Tuff

Units 7b,7d,10 & 11 correspond to legend of Geology Compilation Map, map No.1

STRUCTURE

F / FALT - Fault or Fault Zone

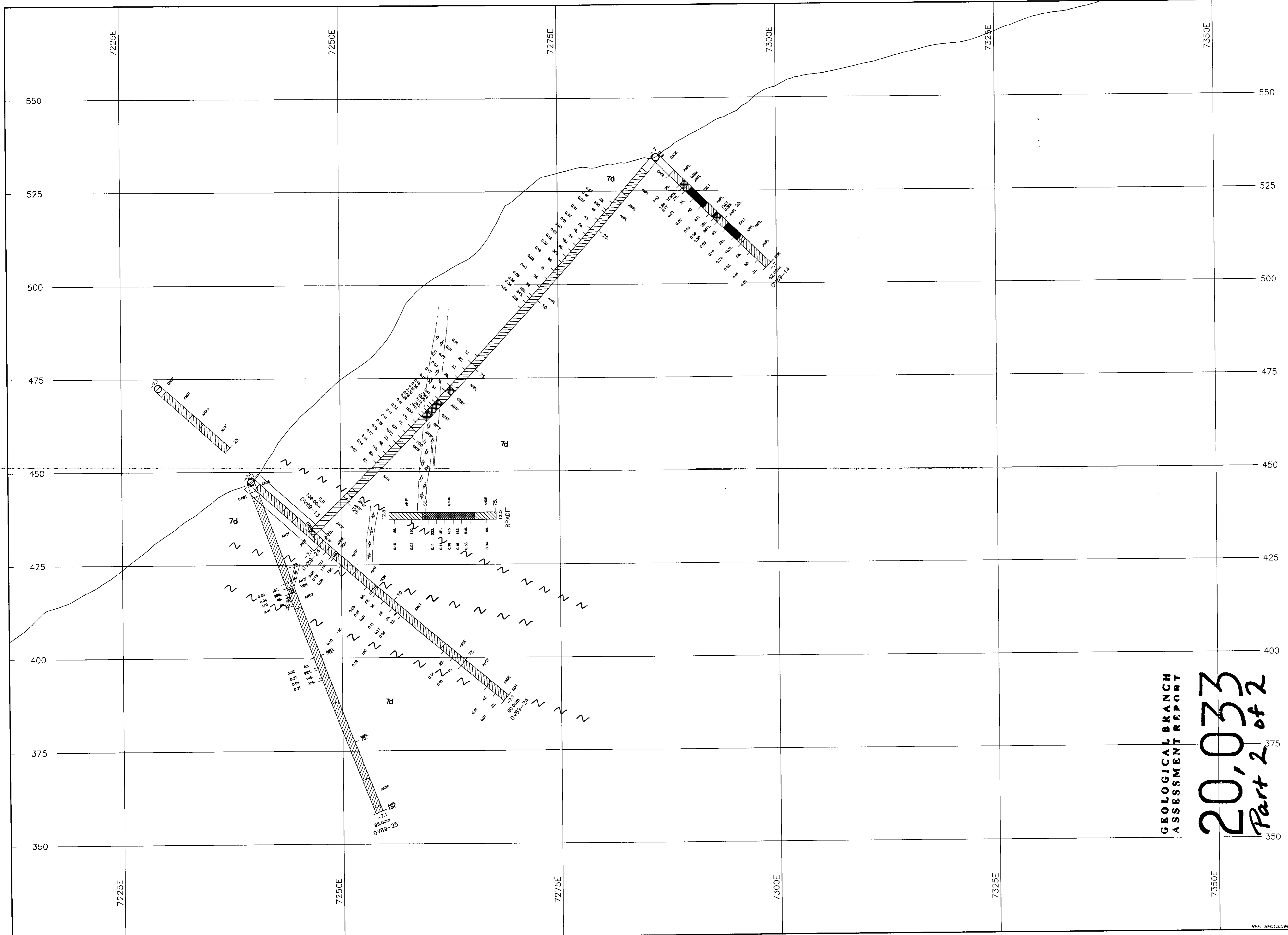
Assay Geochem
 Au G/T Cu ppm
 2.42 443

Section Elevations in metres.

SCALE 1:500

10 0 20 40
 METRES

**GEOLOGICAL BRANCH
 ASSESSMENT REPORT**
20,033
Part 2 of 2



LEGEND

GEOLOGICAL UNITS

- Overburden (Casing)
- DYKE - Basaltic Dyke
- LAMP - Lamprophyre Dyke
- DIDK - Diorite Dyke
- MODI - Monzo Diorite - Diorite
- Vein
- Mineralized Zone
- QZST - Quartz Vein Stockwork Breccia Zone
- QZCS - Quartz-Chlorite Stockwork Zone
- QZBX - Quartz-Pyrite Breccia
- HYBX - Hydrothermal Breccia
- Undifferentiated Andesite Tuffs and Flows
- ANFL Andesite Flow
- ANFL Andesite Flow
- ANFL Andesite Tuff, Lapilli Tuff
- ANCT Andesite Crystal Lithic Tuff
- ANHB Andesite Hornblende Plagioclase Porphyry
- ANAG Andesite Agglomerate (Fragmental)
- MYAN Mylonitic Hornblende - Feldspar Andesite
- MUDT Muddy Tuff

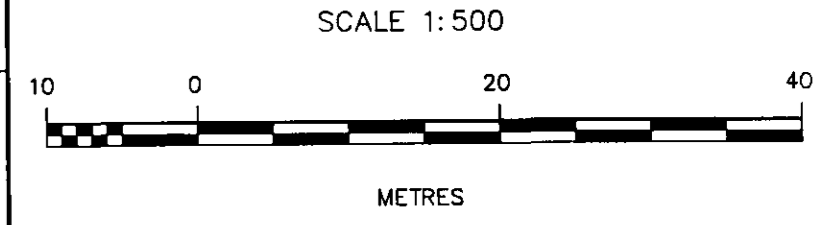
Units 7b,7d,10 & 11 correspond to legend of Geology Compilation Map, map No.1

STRUCTURE

- F / FALT - Fault or Fault Zone

Assay	Geochem
Au G/T	Cu ppm
2.42	443

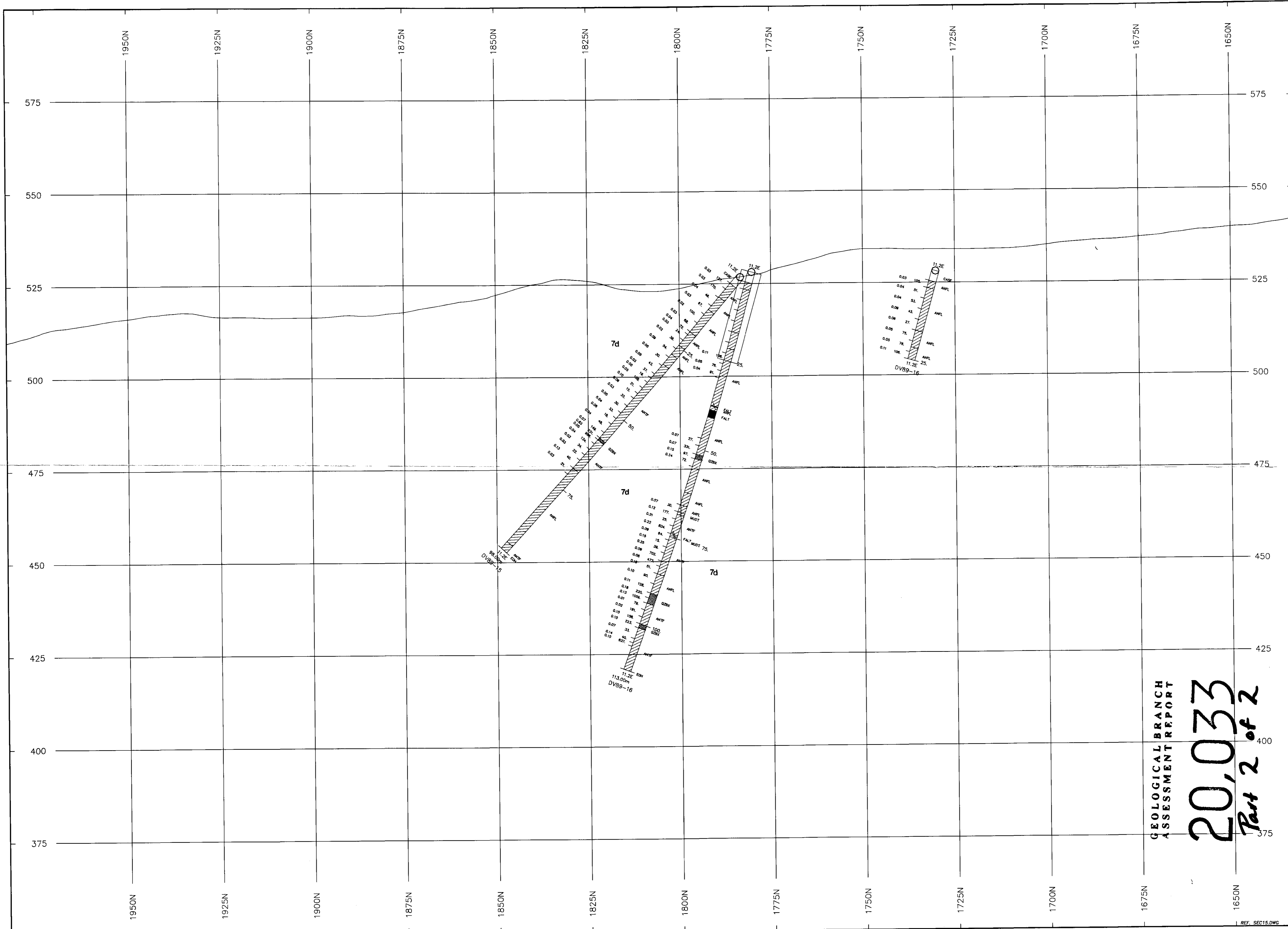
Section Elevations in metres.



GEOLOGICAL BRANCH
ASSESSMENT REPORT
20,033
Part 2 of 2

DOLLY VARDEN MINERALS INC.

Report by:	DOLLY VARDEN PROJECT		
Date:	DDH SECTION		
	DV89-13,14 DV89-24,25		
	LOOKING NORTHWEST		
	SECTION AT 205 AZIMUTH		
Mining Division	Skeena		Map:
NTS:	Tecucomp Geological Inc.		9
	103P/11-12		



- LEGEND**
- GEOLOGICAL UNITS**
- Overburden (Casing)
 - DYKE - Basaltic Dyke
 - LAMP - Lamprophyre Dyke
 - DIDK - Diorite Dyke
 - MODI - Monzo Diorite - Diorite
 - Vein
 - Mineralized Zone
 - QZST - Quartz Vein Stockwork Breccia Zone
 - QZCS - Quartz-Chlorite Stockwork Zone
 - QZBX - Quartz-Pyrite Breccia
 - HYBX - Hydrothermal Breccia
 - Undifferentiated Andesite Tuffs and Flows
 - ANDE Andesite
 - ANFL Andesite Flow
 - ANTF Andesite Tuff, Lapilli Tuff
 - ANCT Andesite Crystal Lithic Tuff
 - ANHB Andesite Hornblende Plagioclase Porphyry
 - ANAG Andesite Agglomerate (Fragmental)
 - MYAN Mylonitic Hornblende - Feldspar Andesite
 - MUDT Muddy Tuff
- Units 7b,7d,10 & 11 correspond to legend of Geology Compilation Map, map No.1

STRUCTURE

- F / FALT - Fault or Fault Zone

Assay Geochem
 Au G/T Cu ppm
 2.42 443

Section Elevations in metres.

SCALE 1:500

METRES

GEOLOGICAL BRANCH
 ASSESSMENT REPORT
20,033
 Part 2 of 2

DOLLY VARDEN MINERALS INC.

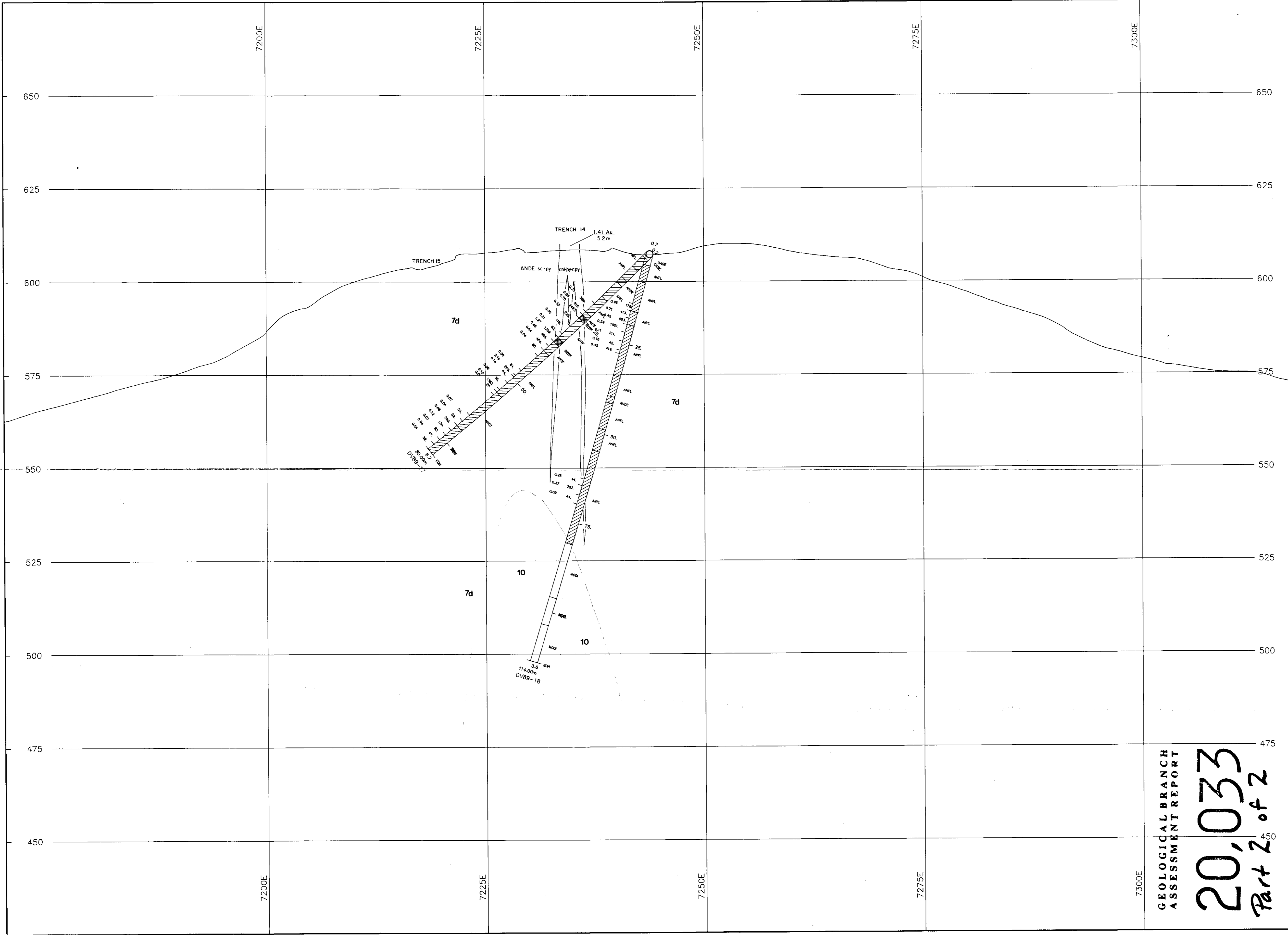
Report by: _____
 Date: _____

DOLLY VARDEN PROJECT
 DDH SECTION
 DV89-15, DV89-16
 LOOKING EAST
 SECTION AT 000° AZIMUTH

Mining Division
 Skeena
 NTS:
 103P/11-12

Tecumcomp Geological Inc. 10

REF. SEC15.DWG



LEGEND

GEOLOGICAL UNITS

- Overburden (Casing)
- DYKE - Basaltic Dyke
- LAMP - Lamprophyre Dyke
- DIDK - Diorite Dyke
- MODI - Monzo Diorite - Diorite
- Vein
- Mineralized Zone
- QZST - Quartz Vein Stockwork Breccia Zone
- QZCS - Quartz-Chlorite Stockwork Zone
- QZBX - Quartz-Pyrite Breccia
- HYBX - Hydrothermal Breccia
- Undifferentiated Andesite Tuffs and Flows
- ANDE Andesite
- ANFL Andesite Flow
- ANTF Andesite Tuff, Lapilli Tuff
- ANCT Andesite Crystal Lithic Tuff
- ANHB Andesite Hornblende Plagioclase Porphyry
- ANAG Andesite Agglomerate (Fragmental)
- MYAN Mylonitic Hornblende - Feldspar Andesite
- MUDT Muddy Tuff

Units 7b,7d,10 & 11 correspond to legend of Geology Compilation Map, map No.1

STRUCTURE

- F / FALT - Fault or Fault Zone

Assay Geochem
 Au G/T Cu ppm
 2.42 443

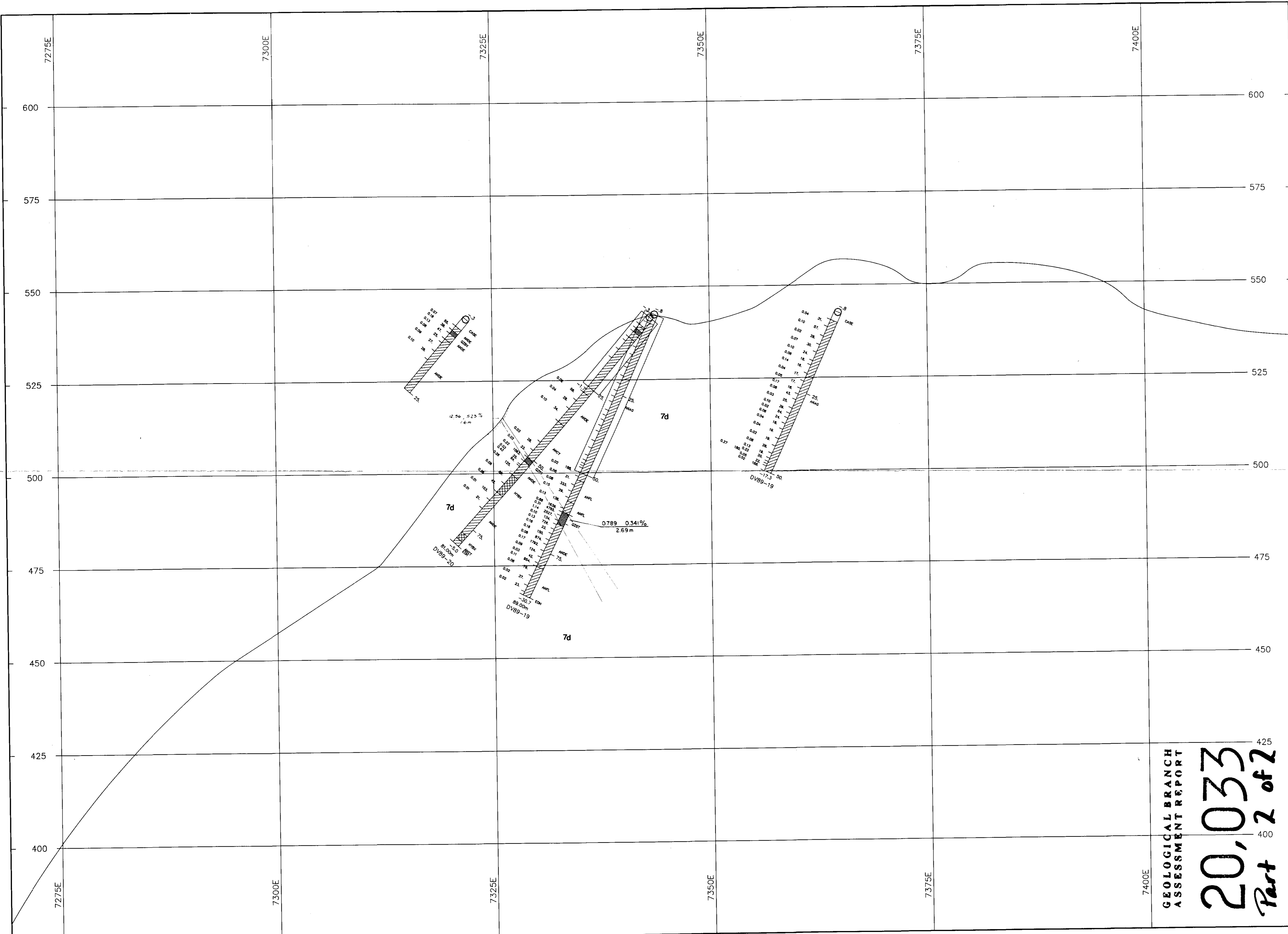
Section Elevations in metres.

SCALE 1:500

**GEOLOGICAL BRANCH
 ASSESSMENT REPORT**
20,033
 Part 2 of 2

DOLLY VARDEN MINERALS INC.

Report by:	DOLLY VARDEN PROJECT
Date:	
Mining Division	DDH SECTION
Screen	DV89-17, DV89-18
NTS	LOOKING NORTHWEST
103P/11-12	SECTION AT 205 AZIMUTH
	Tecucomp Geological Inc.
	Map: 11



LEGEND

GEOLOGICAL UNITS

- Overburden (Casing)

- DYKE - Basaltic Dyke
- LAMP - Lamprophyre Dyke
- DIDK - Diorite Dyke

- MODI - Monzo Diorite - Diorite

- Vein
- Mineralized Zone
- QZST - Quartz Vein Stockwork Breccia Zone
- QZCS - Quartz-Chlorite Stockwork Zone
- QZBX - Quartz-Pyrite Breccia
- HYBX - Hydrothermal Breccia

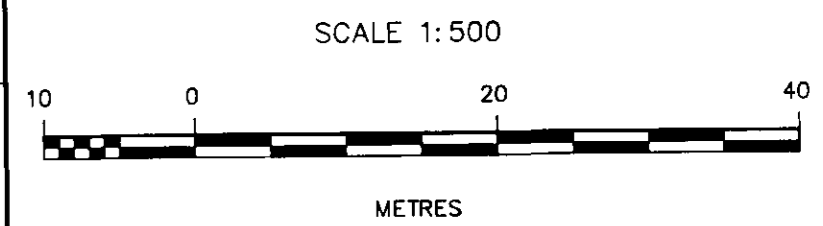
- Undifferentiated Andesite Tuffs and Flows
- ANDE Andesite
- ANFL Andesite Flow
- ANFT Andesite Tuff, Lapilli Tuff
- ANCT Andesite Crystal Lithic Tuff
- ANHB Andesite Hornblende Plagioclase Porphyry
- ANAG Andesite Agglomerate (Fragmental)
- MYAN Mylonitic Hornblende - Feldspar Andesite
- MUDT Muddy Tuff

- Units 7b,7d,10 & 11 correspond to legend of Geology Compilation Map, map No.1

- STRUCTURE**
- F / FALT - Fault or Fault Zone

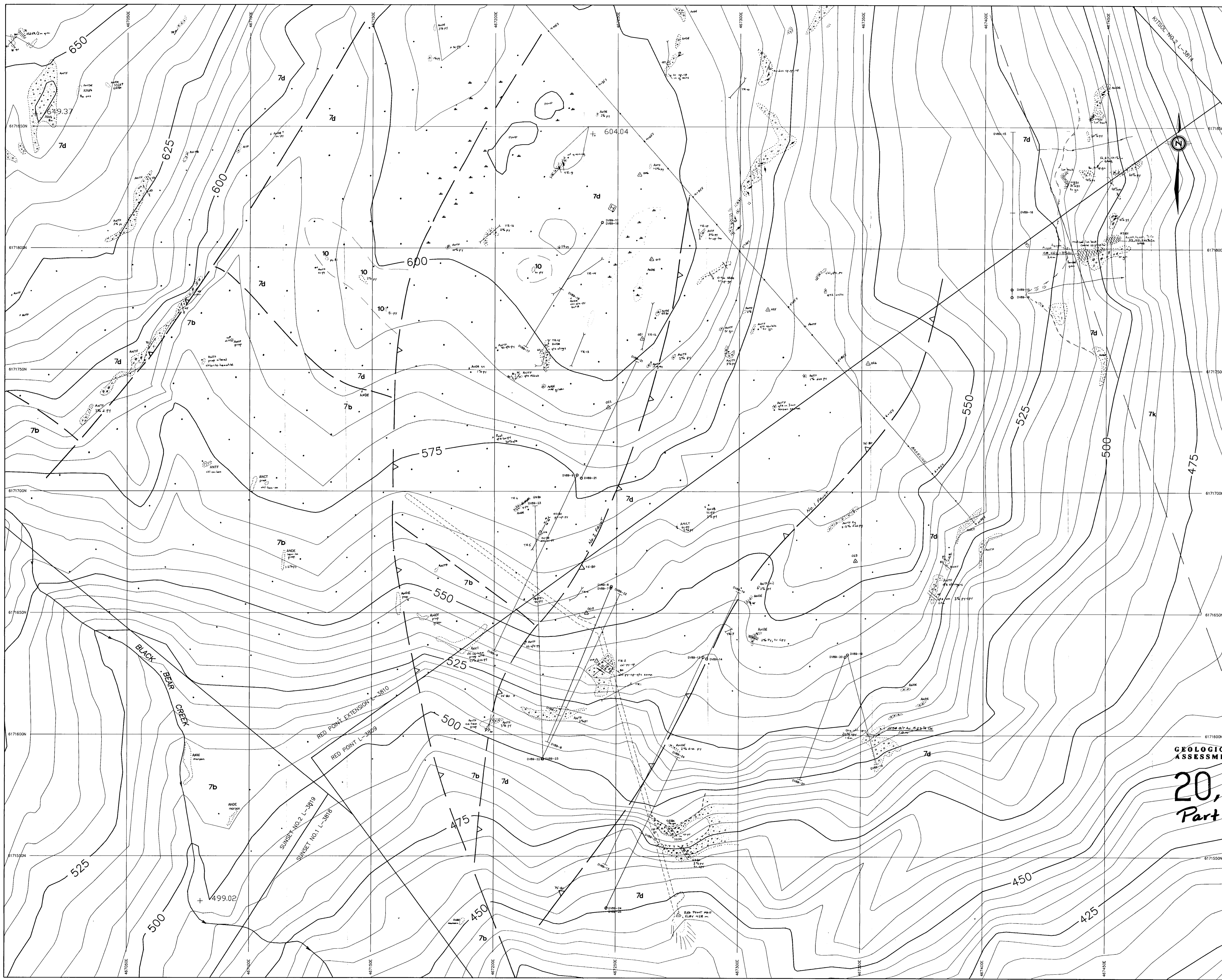
Assay	Geochem
Au G/T	Cu ppm
2.42	443

Section Elevations in metres.



**GEOLOGICAL BRANCH
ASSESSMENT REPORT**
20,033
Part 2 of 2

DOLLY VARDEN MINERALS INC.	
Report by:	DOLLY VARDEN PROJECT
Date:	DDH SECTION DV89-19, DV89-20 LOOKING NORTHWEST SECTION AT 205 AZIMUTH
Mining Division	Tecucomp Geological Inc.
Skene	Map: 12
NTS: 103P/11-12	



LEGEND

- 10** MONZO-DIORITE
- 7d** Andesite flows and tuffs
 ANDE - andesite
 ANFL - andesite flow
 ANIT - andesite tuff, lapilli tuff
 ANCT - andesite crystal-litic tuff
 ANHB - andesite hornblende plagioclase porphyry
- 7b** Undifferentiated andesite porphyritic flows, tuffs, and breccias
 Variably hematite altered.
 Maroon and green

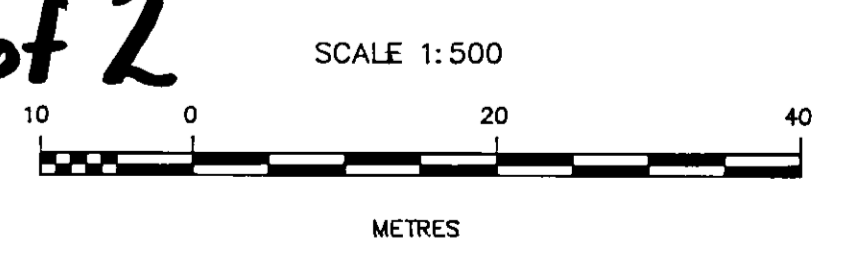
Units 7b, 7d, 10 & 11 correspond to legend of Geology Compilation Map, map No. 1

- ALTERATION**
- PYRITE
 - CHLORITE
 - SERICITE
 - QUARTZ
 - OZST - quartz stockwork breccia zone
 OZCS - quartz-chlorite stockwork zone
 OZBX - quartz-pyrite breccia
 - MINERALIZED ZONE**
 quartz-sulfide +/- chlorite

- SYMBOLS**
- area of outcrop
 - fault
 - geological boundary (observed, inferred)
 - trench (1989)
 - DDH collar and trace
 - quartz-barite vein
 - jointing
 - foliation
 - cliffs
 - creek, stream
 - swamp, bog
 - small outcrop
 - spot mineralization
 - survey point
 - adit, test pit
 - chip sample location

**GEOLOGICAL BRANCH
 ASSESSMENT REPORT**
20,033
 Part 2 of 2

SOUTH SHEET



DOLLY VARDEN MINERALS INC.	
Report by:	DOLLY VARDEN PROJECT
Date:	RED POINT AREA
	GEOLOGY - SOUTH SHEET
Mining Division	Tecumpec Geological Inc.
Sheena NTS: 103P/11-12	
Map:	13.



LEGEND

- 10** MONZO-DIORITE
- 7d** Andesite flows and tuffs
 ANDE - andesite
 ANFL - andesite flow
 ANIF - andesite tuff, lapilli tuff
 ANCT - andesite crystal-litic tuff
 ANHB - andesite hornblende plagioclase porphyry
- 7b** Undifferentiated andesite porphyritic flows, tuffs, and breccias
 Variably hematite altered.
 Maroon and green

Units 7a, 7b, 10 & 11 correspond to legend of Geology Compilation Map, map No.1

ALTERATION

- PYRITE
- CHLORITE
- SERICITE
- QUARTZ
- QZST - quartz stockwork breccia zone
- QZCS - quartz-chlorite stockwork zone
- QZBX - quartz-pyrite breccia
- MINERALIZED ZONE
 quartz-sulfide +- chlorite

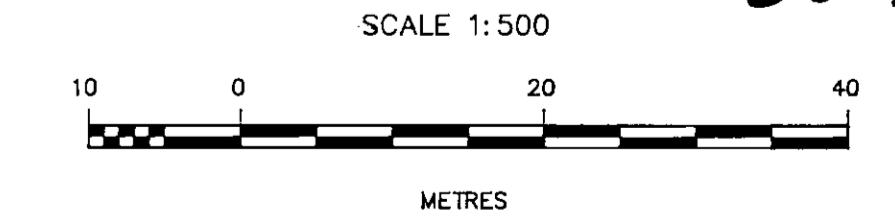
SYMBOLS

- area of outcrop
- fault
- geological boundary (observed, inferred)
- trench (1989)
- DDH collar and trace (DVB8-19)
- quartz-barite vein
- jointing
- foliation
- cliffs
- creek, stream
- swamp, bog
- small outcrop
- spot mineralization
- survey point
- adit, test pit
- chip sample location

NORTH SHEET

GEOLOGICAL BRANCH ASSESSMENT REPORT

20,033 Part 2 of 2



DOLLY VARDEN MINERALS INC.

Report by: _____
 Date: _____
DOLLY VARDEN PROJECT
RED POINT AREA
GEOLOGY - NORTH SHEET

Mining Division
 Skanska
 NTS: 1036/11-12
Tecumpec Geological Inc.
 Map: **14.**