

LOG NO: 08-02	RD.
ACTION:	
FILE NO:	

Assessment Report
on
Geophysical Surveys
ROSE GOLD Mineral Claim
Record No. 2934 (7)
Mt. Penrose Area
Gold Bridge Region
Lillooet Mining Division
Lat. 50° 51' Long ^{123°} 55'
₁₂₂₀
NTS 92J 15/W

Owner: Tammy L. La Rue
Lillooet, B.C.
Operator: Interex Resources Inc.
Lillooet, B.C.

Information for this report
compiled and written by
John P. La Rue
Interex Resources Inc.
Lillooet, B.C.

June 30th, 1990

GEOLOGICAL BRANCH
ASSESSMENT REPORT

20,188

TABLE OF CONTENTS

	Pages
I. INTRODUCTION	
(i) General geographic & physiographic position and access to claim	1
(ii) Property definition, history, current owner and operator and brief economic assessment of property	1 - 3
(iii) A summary of work performed on the claim for assessment purposes	3 - 4
(iv) List of claims upon which assessment work was performed	4
II. Plan Maps	
Plan Map 1 - Overall geographic and physiographic position Scale 1 : 250,000	5
Plan Map 2 - Claim Map Scale 1 : 40,000	6
Plan Map 3 - Geological Map Scale 1 : 250,000	7
Plan Map 4 - Survey Location Map	8
III. DETAILED TECHNICAL DATA AND EVALUATION	9 - 13
IV. ITEMIZED COST STATEMENT	14
V. Author's Qualifications	15
VI. SURVEY DATA MAP	Inside back cover

INTRODUCTION

- (i) The ROSE GOLD Mineral Claim is located at Lat $50^{\circ} 51'$ Long ~~123~~¹²² $^{\circ} 55'$ 6 kilometers west of the town of Gold Bridge, B.C. within the Lillooet Mining Division, NTS Map 92J/15W.

Access to the property's eastern boundary is two-wheel drive from Gold Bridge via West Gunn Lake Rd. Access to the interior portions of the claim is 4-wheel drive via Dunn Rd. which leaves West Gunn Lake Rd. some 600 meters north of the junction with East Gunn Lake Rd; Dunn Rd. in turn branches into a network of numerous sub-grade logging roads, particularly on the eastern half of the claim.

The property is located on the southeastern slope of Mt. Penrose immediately west and north of Gunn and Lajoie Lakes respectively. The property lies at the southeastern part of the Pacific Ranges, a physiographic division of the Coast Ranges. The terrain is, in general steep and mountainous with the prevalent slope facing towards the south and southeast. Elevations vary from 3000' at the SE corner of the claim to more than 4900' at the NW corner on Mt. Penrose.

Sources of water for all phases of property development are abundant and would potentially include Penrose Creek which bisects the property in a northwesterly direction, Gunn Lake, Lajoie Lake, and Downton Lake.

A B.C. Hydro Generating Station is located in Gold Bridge at the foot of Downton Lake and residential electrical service follows both east and west Gunn Lake Roads.

Forest cover consists primarily of moderate density fir and spruce conifer species on the heights and dense alder and willow deciduous species in the drainages. Undergrowth is generally from moderate to dense, the previously logged off portions being especially thick and difficult to traverse.

- (ii) The ROSE GOLD Mineral Claim Record No. 2934 is comprised of 20 units Modified Grid with an expiry date of July 30th, 1990. This expiry date does not take into account the surveys under discussion as being accepted for assessment credits. ROSE GOLD is

owned by Tammy L. La Rue of Lillooet, B.C. and operated by Interex Resources Inc. of Lillooet, B.C.. The ROSE GOLD Claim is located on the site of the former Gwendolyn's Glory and G.G. 1 Mineral Claims, and incorporates this ground that had previously been held by Climex Mining of B.C. Ltd. and Chalice Mining Inc. respectively.

Regionally the ROSE GOLD property is located within the famous Bridge River Gold Camp, where production from the Bralorne-Pioneer and Minto Mines together totalled a significant 8,224,520 tons grading and average 0.53 oz/ton Au and 0.12 oz/ton Ag. Today, many of these early discoveries and past producers of the Bridge River camp, including the Bralorne-Pioneer, are currently being re-evaluated as potential modern day producers.

Local geologic history in the vicinity of ROSE GOLD centers around one such former small producer, the VERITAS Group of Reverted Mineral Crown Grants which lie immediately adjacent along the southern boundary of the claim, and are owned and operated by Coral Energy Ltd. of Vancouver, B.C. The capsule geological comment for the VERITAS Group from the Ministry of Energy, Mines and Petroleum Resources Data Section describes them: "A tongue of Bralorne Diorite intrudes Quartzites and Argillites of the Bridge River (Fergusson) Group and serpentine. A massive quartz vein, with small amounts of pyrite, arsenopyrite, galena and native gold, cuts the diorite and the serpentine. Minerals present include gold and lead." A sample of massive pyrite-arsenopyrite in quartz from the dump of the #3 adit returned 0.56 oz/ton Au (Climex Mining of B.C. Ltd, 1980). Sampling of the Veritas adits by W. Gruenwald B.Sc. of Kerr, Dawson and Assoc. indicated "moderately high grade gold and silver mineralization occurring in massive pyrite and arsenopyrite sulphides occurring as pods within the known vein system". (1978 Ministry of Mines Assessment Report #6971)

ROSE GOLD is located on the site of the former Gwendolyn's Glory and G.G.1 Mineral Claims. In 1979, Climex Mining of B.C. performed geo-exploration surveys on the property consisting of geophysical and geochemical surveys, physical work, limited trenching, and

diamond drilling totalling 30 feet of overburden and 90 feet of bedrock. In 1980 Climex commissioned a "Geological Report on the Gold Bridge Property of Climex Mining of B.C. Ltd." by L. Sookochoff, P.Eng. In 1983, a letter describing local geology was commissioned by Chalice Mining Inc. following a property examination by Edward W. Grove, PH.D., P. Eng. In 1984, airborne Magnetic and VLF-EM Geophysical Surveys were flown by Columbia Airborne Geophysical Services Ltd. and a subsequent report written by David G. Mark, Geophysicist, at the request of Chalice Mining Inc. (Assessment Report #12,853). A program of Linecutting, Grid Establishment, and subsequent ground Magnetometer and VLF-EM surveys were completed by Interex Resources Inc. at the request of D.R. Benn, for assessment purposes in 1985. During 1986, Interex performed geophysical surveys on ROSE GOLD consisting of VLF-EM and Self-Potential surveys. This was followed up in 1987 with additional SP, VLF-EM, and Magnetometer surveys and limited soil geochemistry, also performed by Interex Resources Inc. During the 1988 - 89 exploration season, Interex performed Self-Potential, VLF-EM and IP Surveys conducted over portions of both A and B Grids.

- (iii) A summary of work performed on the ROSE GOLD Property for assessment purposes during the 1989 - 90 exploration season is as follows:

-Physical Work

2.4 km of roadway were cleared with annual windfall removed to access our permanent campsite at GP + 1250 on Goldpoint Rd. Width restricting overgrowth trimming was also necessary for access over approximately 1.5 km of this total. Limited drainage ditching and routine pothole filling to improve and stabilize the roadway were also performed.

Overburden removal of approximately 50 sq. ft (6.6 sq. meters) X depths ranging from 20 cm to 0.9 meters was performed with pick and shovel to expose a quartz stockwork/breccia at 25 NW + 95 SW B Grid.

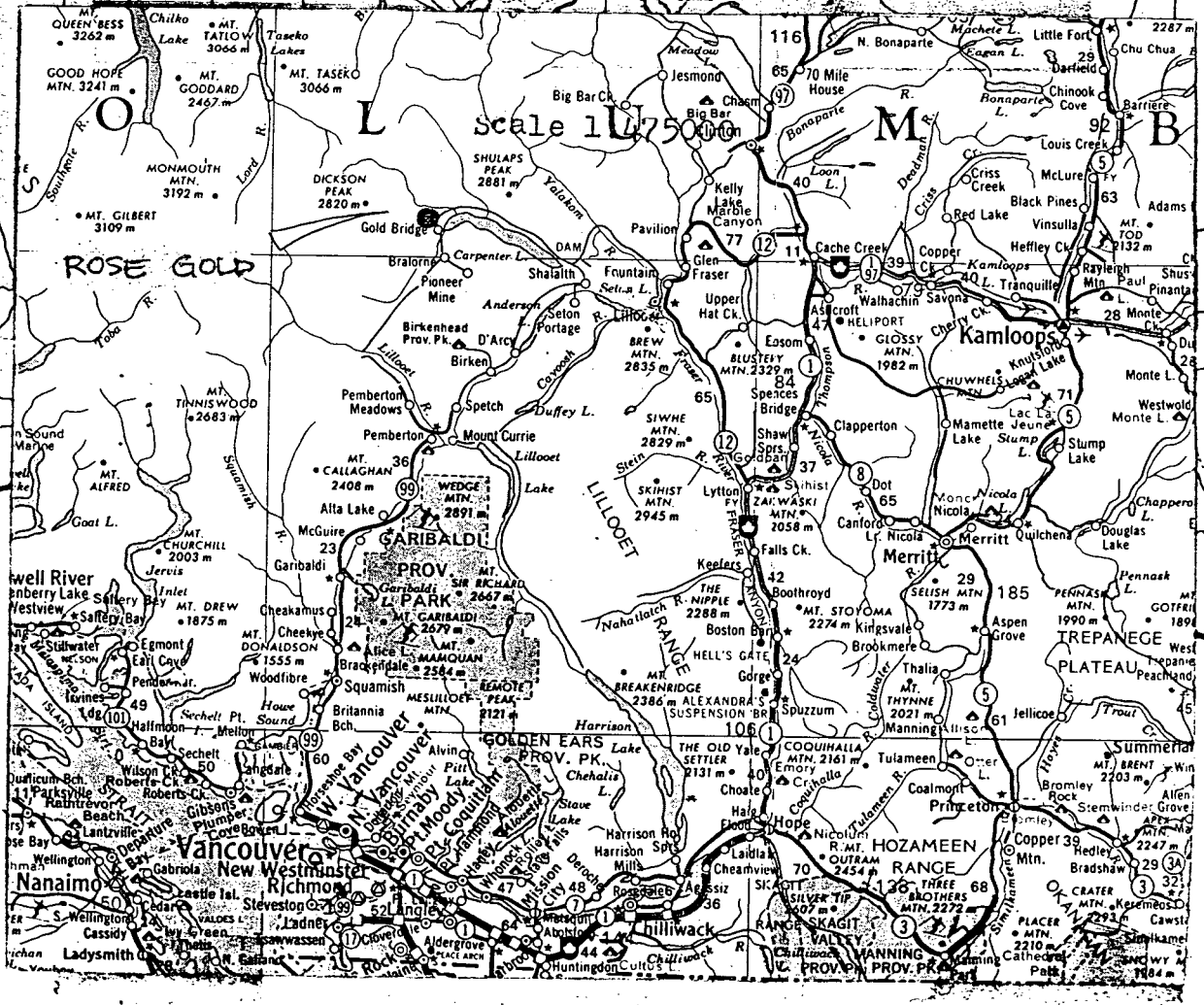
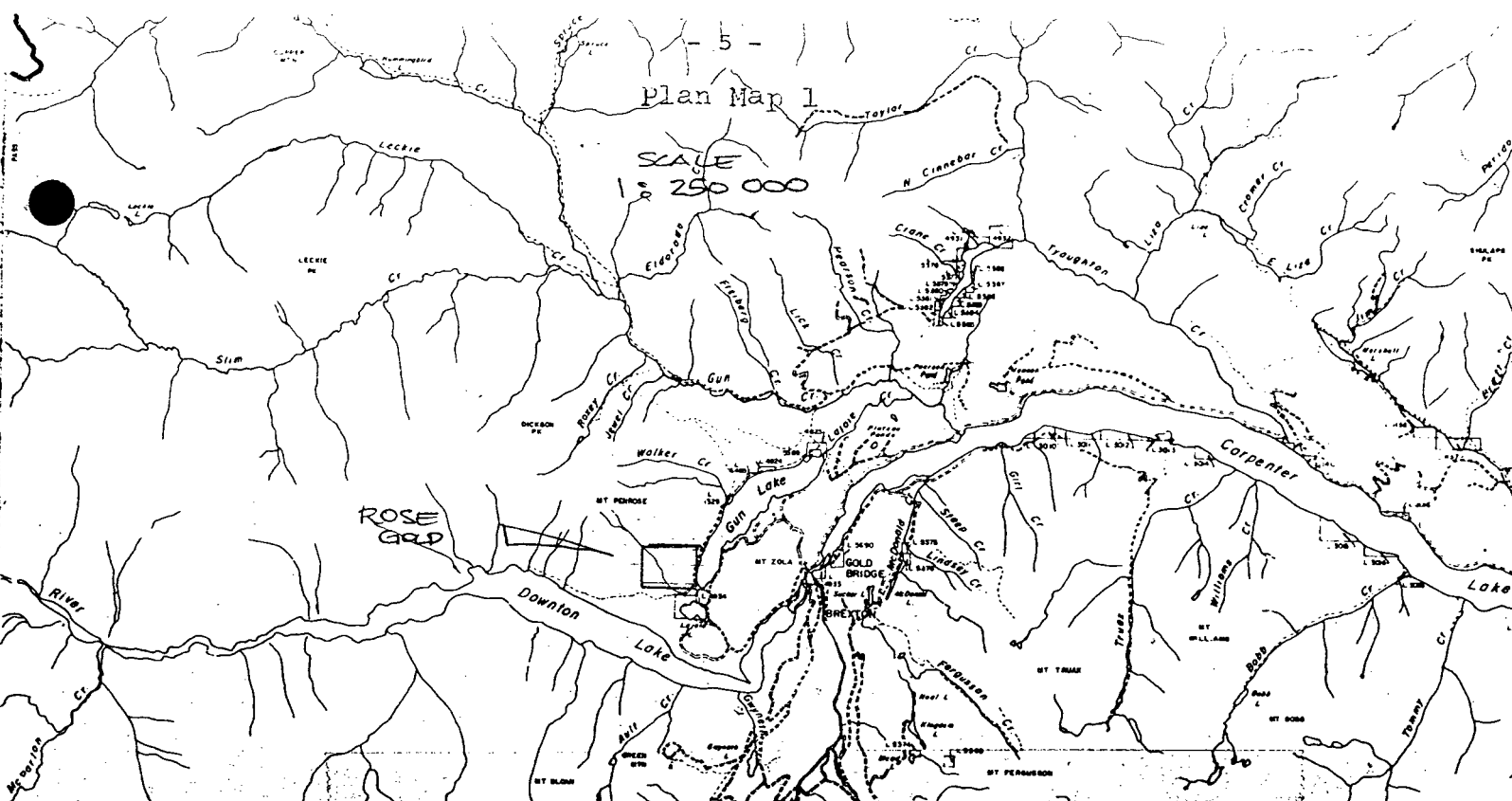
-Self-Potential Survey

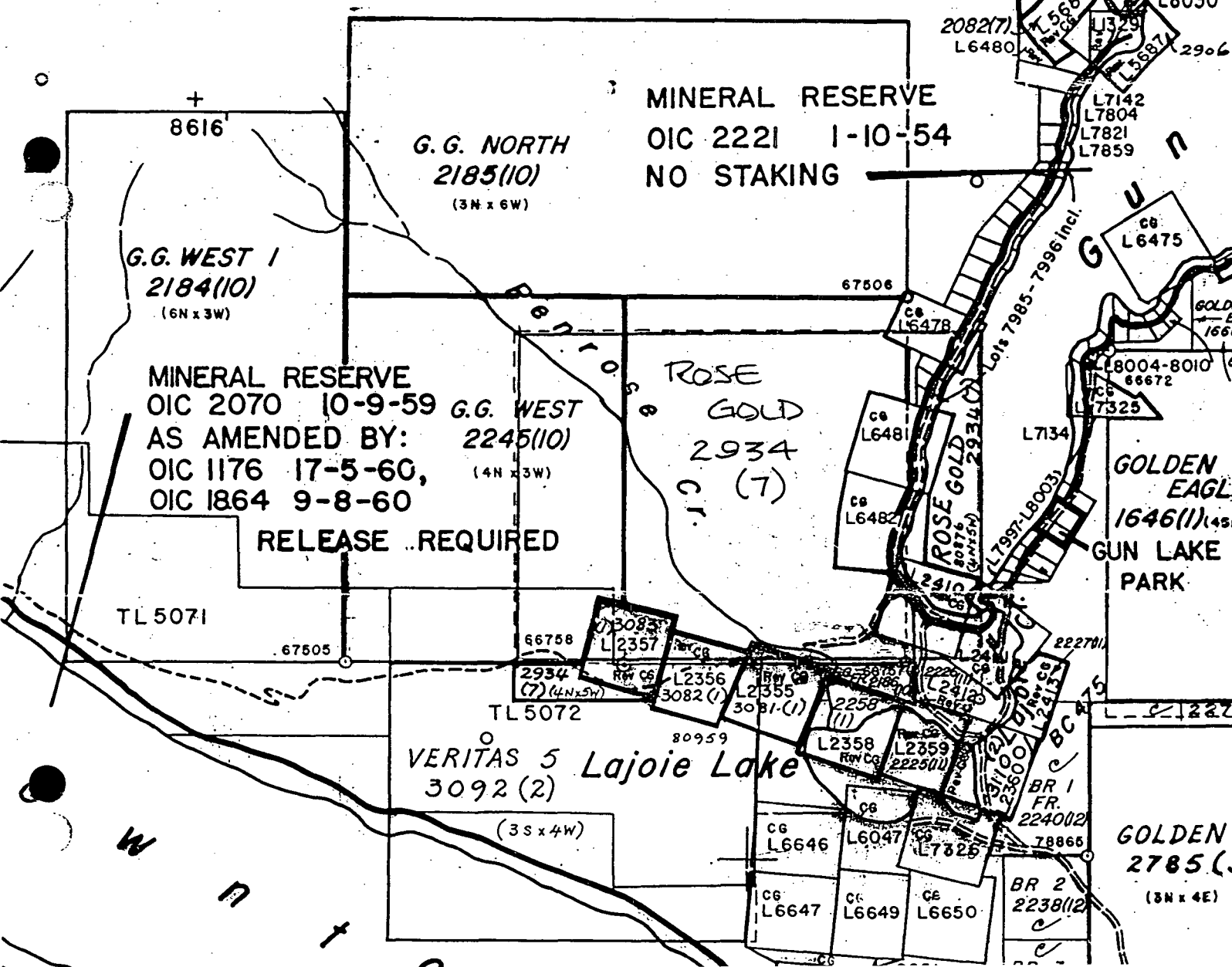
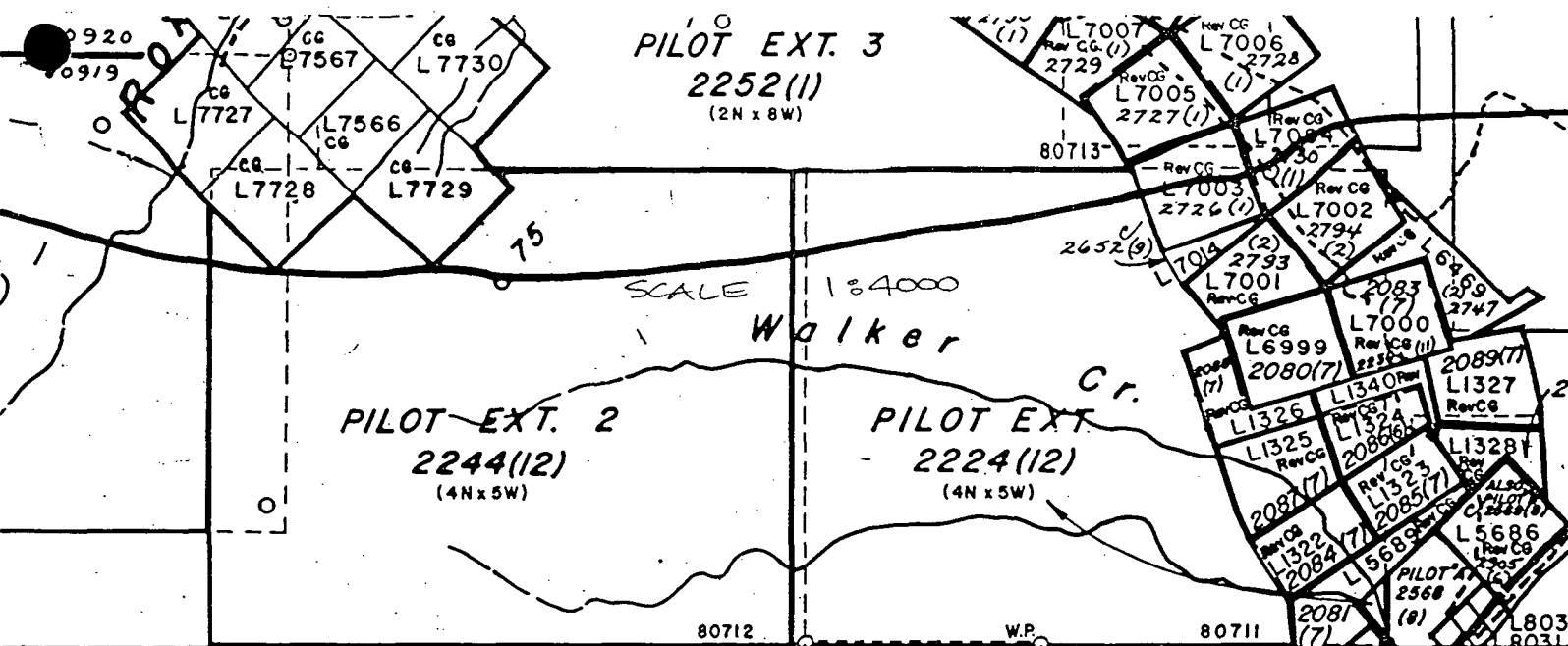
3.95 km of Self-Potential Survey was performed over the northwestern half of A Grid for a total of 395 stations.

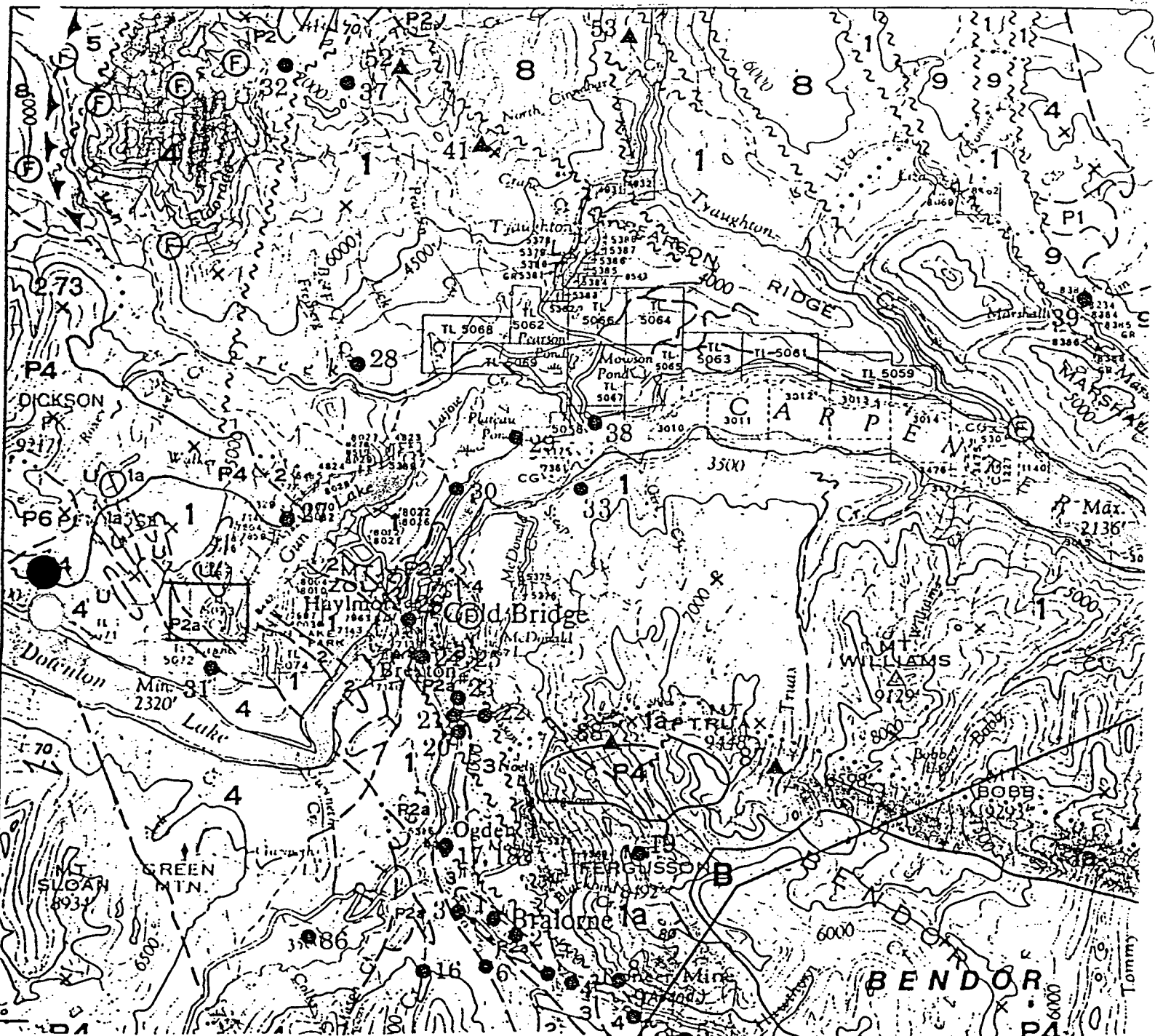
- (iv) The majority of work for assessment purposes during the 1989 - 90 exploration season was completed over ground that has previously been explored in earlier surveys and was mainly of a follow-up nature.

Plan Map 1

SCALE 1:250 000

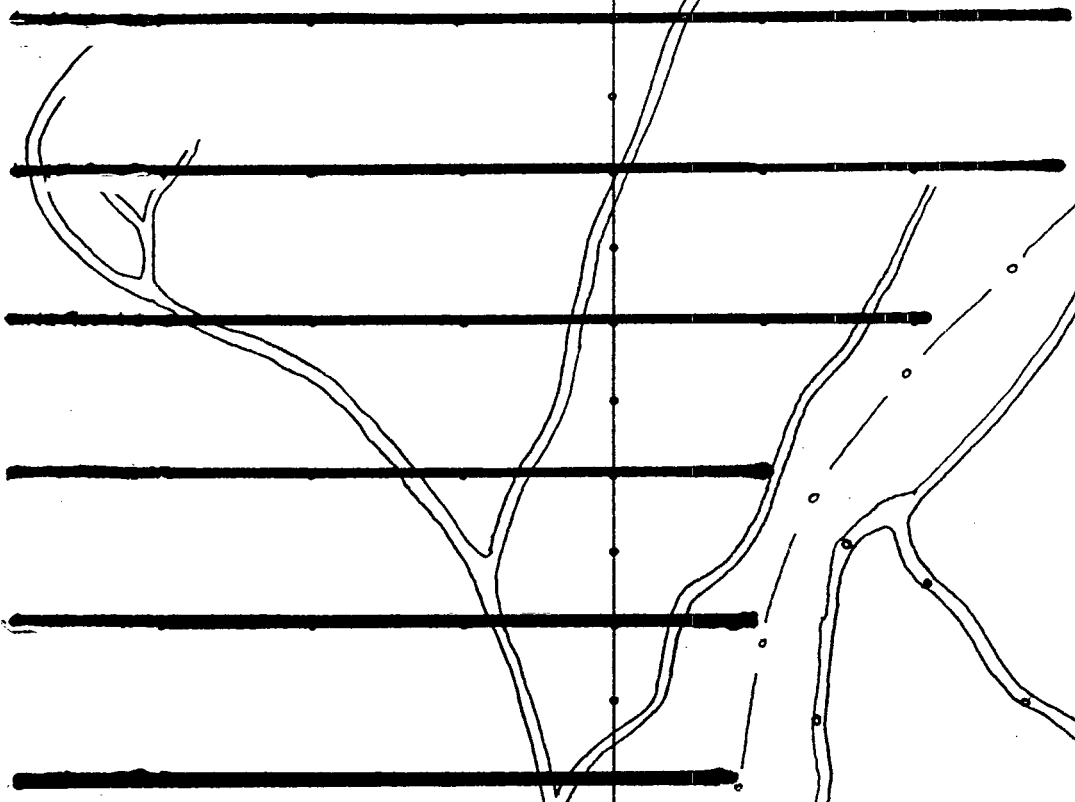






- 1 - Bridge River Group (Fergusson): Chert argillite, phyllite, greensto
- P2a- Bralorne Intrusions
- U - Ultrabasics
- 2 - Noel Formation: Thin Bedded chert, argillite, conglomerate, greensto
- 3 - Pioneer Formation: Greenstone derived from andesitic flows, minor rhyolitic breccia and pyroclastics
- 4 - Hurley Formation: Thin bedded limy argillite, phyllite, limestone tuff

-8-



LINE 300NW

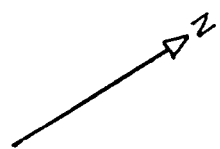
LINE 200NW

LINE 100NW


LINE 00

LINE 100SE

LINE 200SE

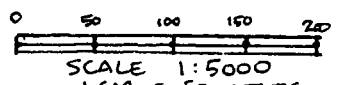


ROSE GOLD
 SP SURVEY
 LOCATION
 '89 - '90
 EXPLORATION

 LINES SURVEYED

ALL MEASUREMENTS BY CHAIN
 & COMPASS. BASE MAP PREPARED
 FROM GSC AERIAL PHOTO BLOW-UP.

J. W. R. E



DETAILED TECHNICAL DATA AND EVALUATION

Self-Potential Survey

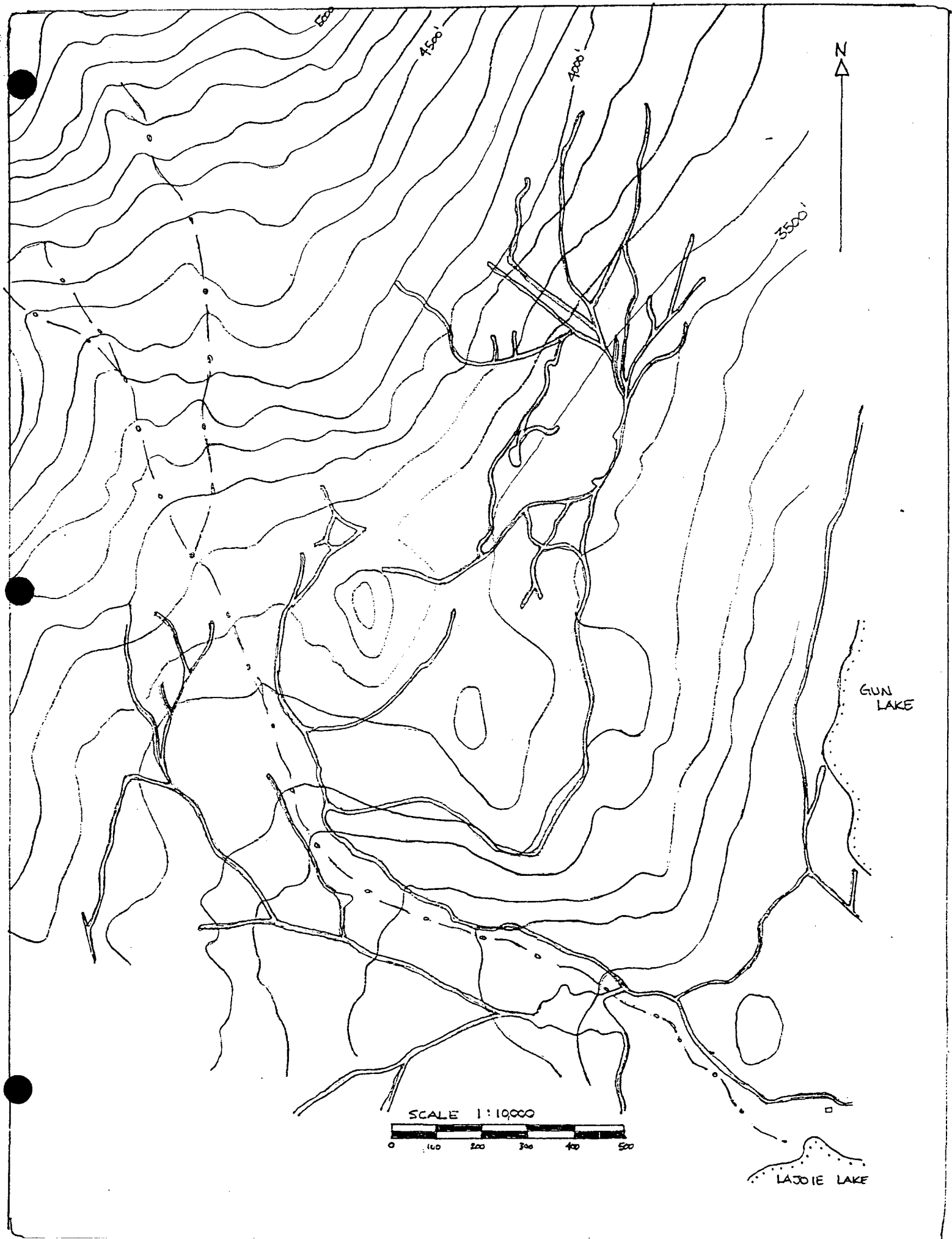
A total of 3.95 km of Self-Potential (S.P.) Survey was completed at 10 meter station intervals for a total of 395 readings, conducted over the northwestern half of A Grid. Focus of this survey was to cover an area that had previously shown correlative VLF-EM and geochemical soil anomalies for gold, arsenic and copper (Climex Assessment Report #8234 - 1980), to determine if sulphide mineralization was associated. The survey/exploration this year was conducted in mid-spring from May 13 - 29th 1990 when ideal homogenous soil-moisture conditions were still prevelant.

A threshold value of -60 mv was found to correspond directly to sulphide mineralization surrounding the ore zone on the adjacent Veritas past-producer, and was the threshold value used as a 'pathfinder' to delineate the results of this years survey.

Results of the '89 -90 Self-Potential survey have delineated and extended an SP anomaly discovered in an earlier (1986) SP Survey of Lines 300NW and 350NW of A Grid by Interex. Results to date have delineated a moderate-strong SP anomaly centered between Line 300NW + 130 SW and extending through Line 900NW + 80SW. This anomaly shows excellent correlation between the previously defined soil geochemical anomalies defined by Climex in 1980 for Gold, Arsenic, and Copper and appears to have also confirmed continuation of earlier VLF-EM anomalies, where the data could not reflect a crossover (indicating an anomaly) due to prevailing topographic conditions. A smaller SP anomaly running generally parallel, has also been delineated and extends from Line 350NW + 220SW through Line 500NW + 240 SW.

Topographically, this SP anomaly correlates well with a depression, quite possibly a fault zone, that is covered with overburden for its' entire length. Occasional outcrop exposures are visible only on the edges of the depression as the prevailing topography rises, but indicate increasing alteration from both sides towards the center of this depression that is generally reflected by the course of a small stream/drainage.

Rock geochemistry taken by Climex in 1980 returned values of 0.6% Cu and 2.6 Ozs. ton Ag from A Grid 275NW + 135 SW, immediately at the perimeter of this defined correlative A Grid anomaly and supports our theory that this depression is the surface expression of a body of sulphide mineralization that may well contain values in precious metals



LINE 900NW

LINE 800NW

LINE 700NW

LINE 600NW

LINE 500NW

LINE 400NW

LINE 300NW

ROCK GEOCHEM
2.6 OZS/AG TON

LINE 200NW

LINE 100NW

LINE 00

LINE 100SE

LINE 200SE

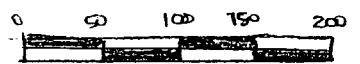
ROSE GOLD A GRID

CORRELATION OF
RESULTS TO DATE
SOIL GEOCHEMISTRY

//// GOLD

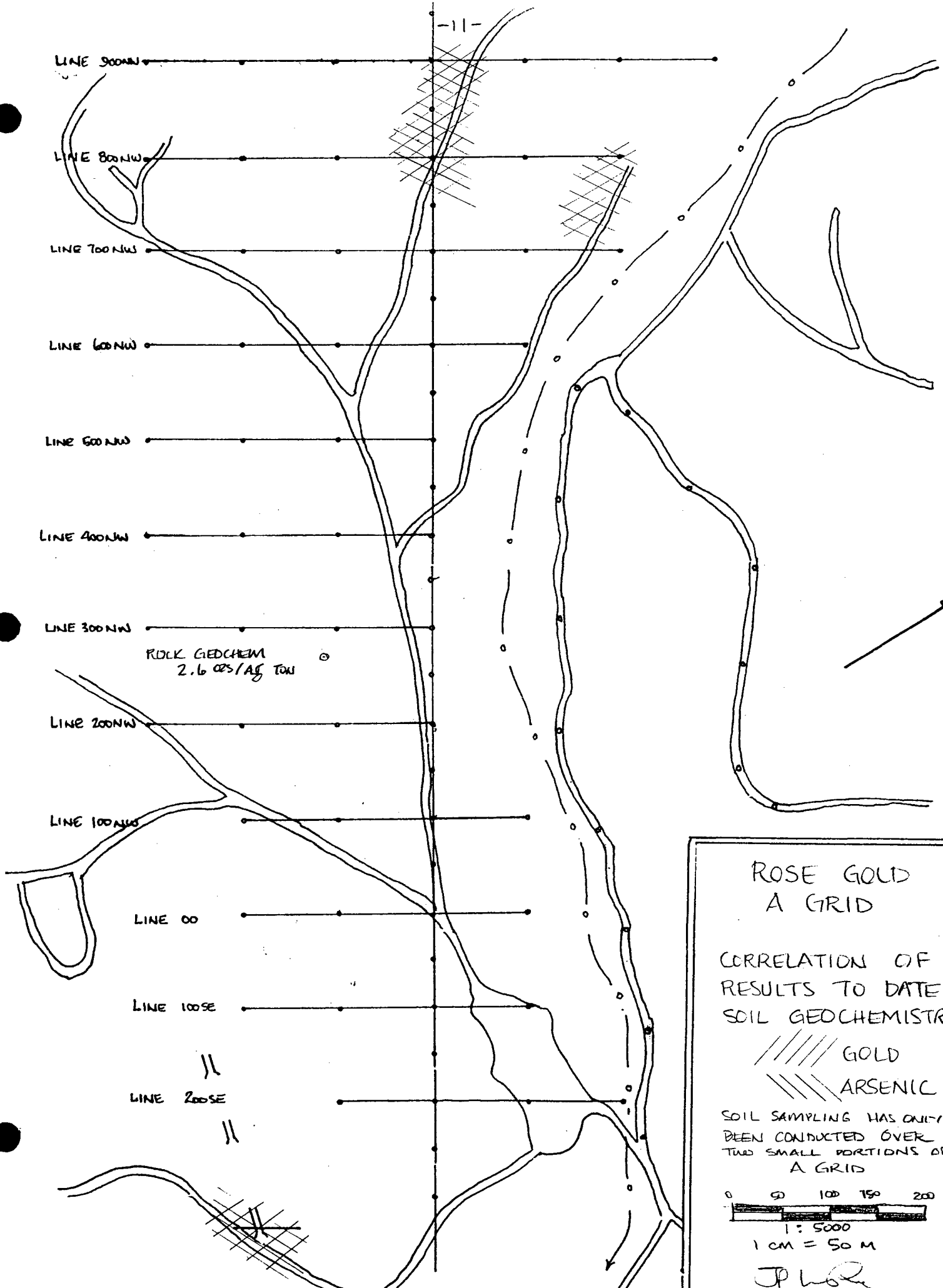
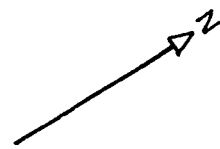
//// ARSENIC

SOIL SAMPLING HAS ONLY
BEEN CONDUCTED OVER
TWO SMALL PORTIONS OF
A GRID

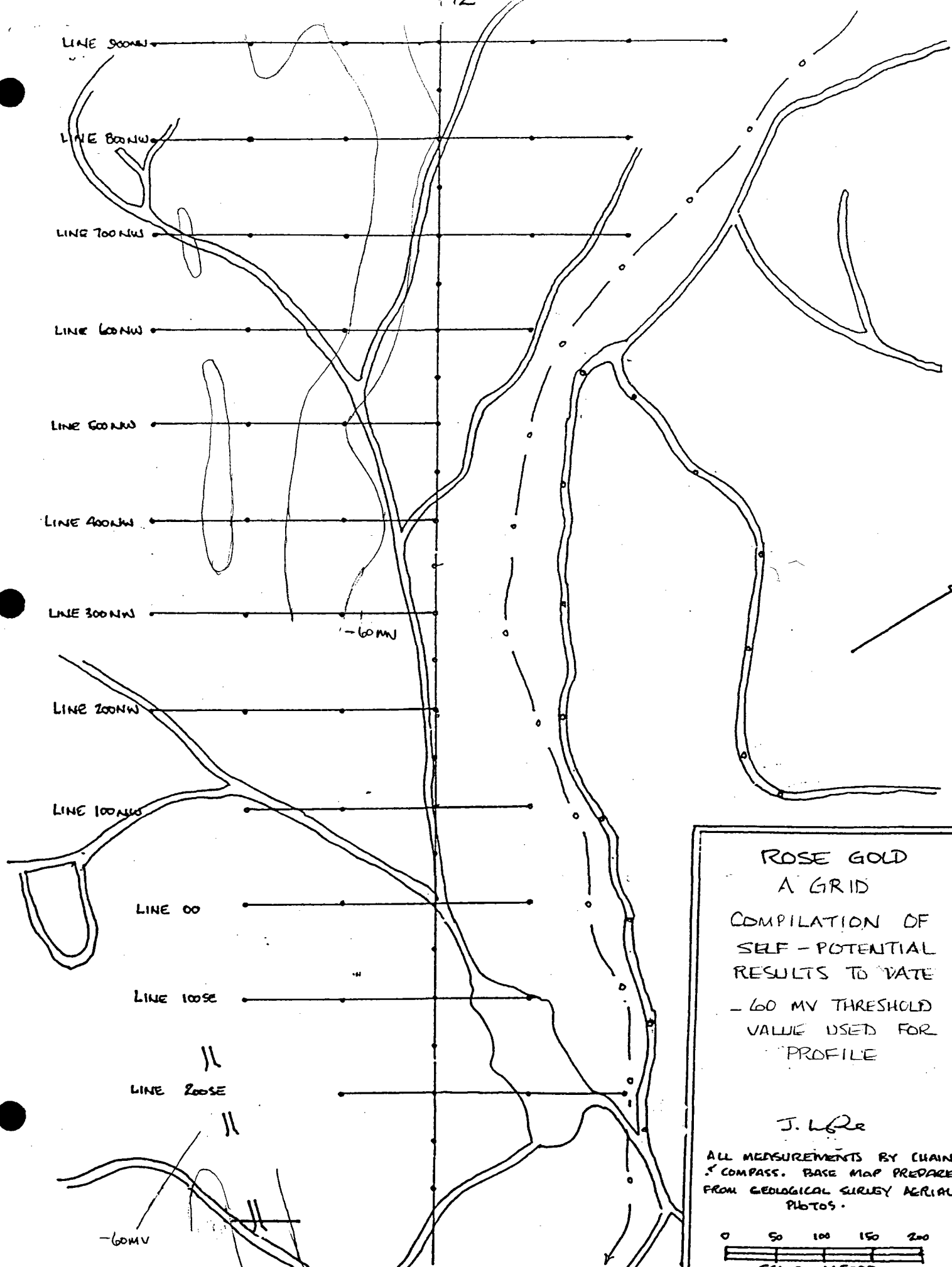


1: 5000
1 CM = 50 M

JP [signature]



-12-

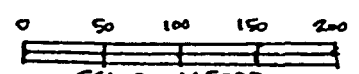


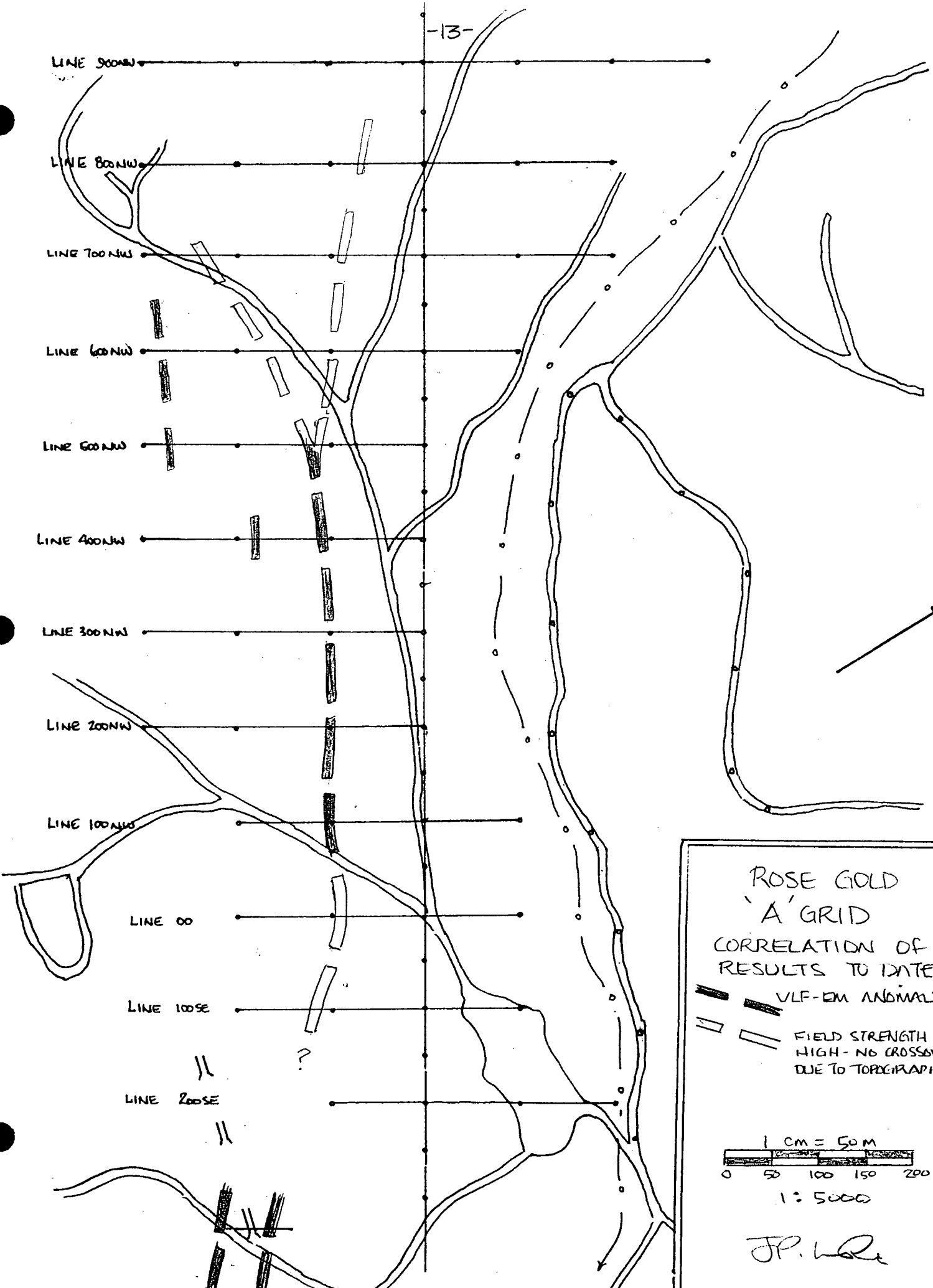
ROSE GOLD
A GRID

COMPILATION OF
SELF-POTENTIAL
RESULTS TO DATE
- 60 MV THRESHOLD
VALUE USED FOR
PROFILE


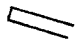
J. L. R.

ALL MEASUREMENTS BY CHAIN
& COMPASS. BASE MAP PREPARED
FROM GEOLOGICAL SURVEY AERIAL
PHOTOS.





ROSE GOLD
'A' GRID
CORRELATION OF
RESULTS TO DATE

 VLF-EM ANOMALY
 FIELD STRENGTH
HIGH - NO CROSSOVER
DUE TO TOPOGRAPHY?

1 CM = 50 M
0 50 100 150 200
1:5000

JP. W. R.

ITEMIZED COST STATEMENT

Physical Work	\$ 450.00
-Road stabilization and clearing access roads of windfalls	
Self - Potential Survey (4 days)	1200.00
Rentals	
-SP unit complete 2 weeks @ \$30/ week	60.00
-Replacement ceramic SP pots X 2 from breakage	35.00
-4 X 4 Rental plus mileage	840.00
17 days @ \$35.00 per day plus 819 km @ \$ 0.30/km	
Mob - de - mob: Gas, Ferry, Camp Supplies, Exploration supplies, 1 night's motel	983.00
Report Costs: Typing, photocopying, map preparation and report	750.00
 TOTAL EXPLORATION EXPENDITURES FOR ASSESSMENT PURPOSES	 \$ 4318.00

MALASPINA COLLEGE

Statement of Course Completion

JOHN P. LARUE

has

Successfully Completed 180 Hours of Instruction
in

MINERAL EXPLORATION FOR PROSPECTORS

PRESENTED BY B.C. MINISTRY OF ENERGY, MINES AND PETROLEUM RESOURCES
B.C. MINISTRY OF EDUCATION

APRIL 16 to 30, 1983 - MESACHIE LAKE, B.C.

MAY 2, 1983

Dated at Nanaimo,
British Columbia, Canada




Director / Deputy


Registrar


Instructor

LINE 900 NW

15
18
19
20
21
22
24
26
28
31
32
33
34
35
36
37
38
39
40
41
42
43
44
45
46
47
48
49
50
51
52
53
54
55
56
57
58
59
60
61
62
63
64
65
66
67
68
69
70
71
72
73
74
75
76
77
78
79
80
81
82
83
84
85
86
87
88
89
90
91
92
93
94
95

LINE 800 NW

24
24
28
22
22
24
26
28
31
32
33
34
35
36
37
38
39
40
41
42
43
44
45
46
47
48
49
50
51
52
53
54
55
56
57
58
59
60
61
62
63
64
65
66
67
68
69
70
71
72
73
74
75
76
77
78
79
80
81
82
83
84
85
86
87
88
89
90
91
92
93
94
95

LINE 700 NW

19
23
22
27
31
43
48
55
57
56
51
41
34
33
29
23
24
30
31
40
41
48
48
53
53
56
61
61
68
81
83
80
81
71
82
82
84
85
86
87
88
89
90
91
92
93
94
95

20,188

GEOLOGICAL BRANCH ASSESSMENT REPORT

ROSE GOLD
NORTHWESTERN HALF OF 'A' GRID
SELF-POTENTIAL SURVEY
READINGS IN MILLIVOLTS

SP ANOMALY
-60 MV. THRESH
ALL MEASUREMENTS W/ HIP CHAIN
& COMPASS

BASE MAP COMPILED FROM AERIAL
PHOTO BLOW-UP

SCALE 1:10000



1 CM = 10 METRES
J. H. ...
June 18 1990

PENROSE CREEK

LINE 600 NW

LINE 500 NW

LINE 400 NW

'A' GRID BASELINE
305° LINE 1

39

48

400 SW

18

40

25