

- LEGEND**
- MESOZOIC**
 Triassic (?) Jurassic
- NPS Nelson Plutonic Suite
 - a Granodiorite
 - b Diorite
 - c Monzonite
 - d Gabbro
- PALEOZOIC**
 Carboniferous
- KB Kobau Group
 - 1 Quartzite
 - 2 Phyllite
 - 3 Calcareous Phyllite
 - 3a Marble
- Outcrop
 Geological Contact
 Foliation
 Fracture, Joint
 Fold; Plunge Known, Axial Plane Inclination Known; Multiple Folds
 Fault
 Quartz Vein
 Gossan

NOTE: Claim Boundaries Located with Respect to Roads

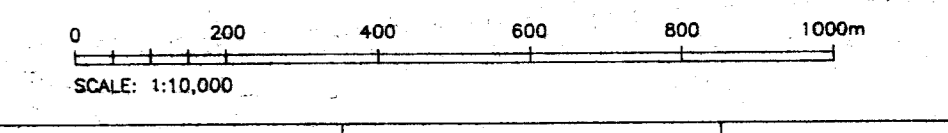
GEOLOGICAL BRANCH
 ASSESSMENT REPORT

20,560
 Part 2 of 2

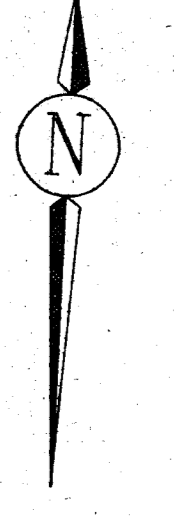
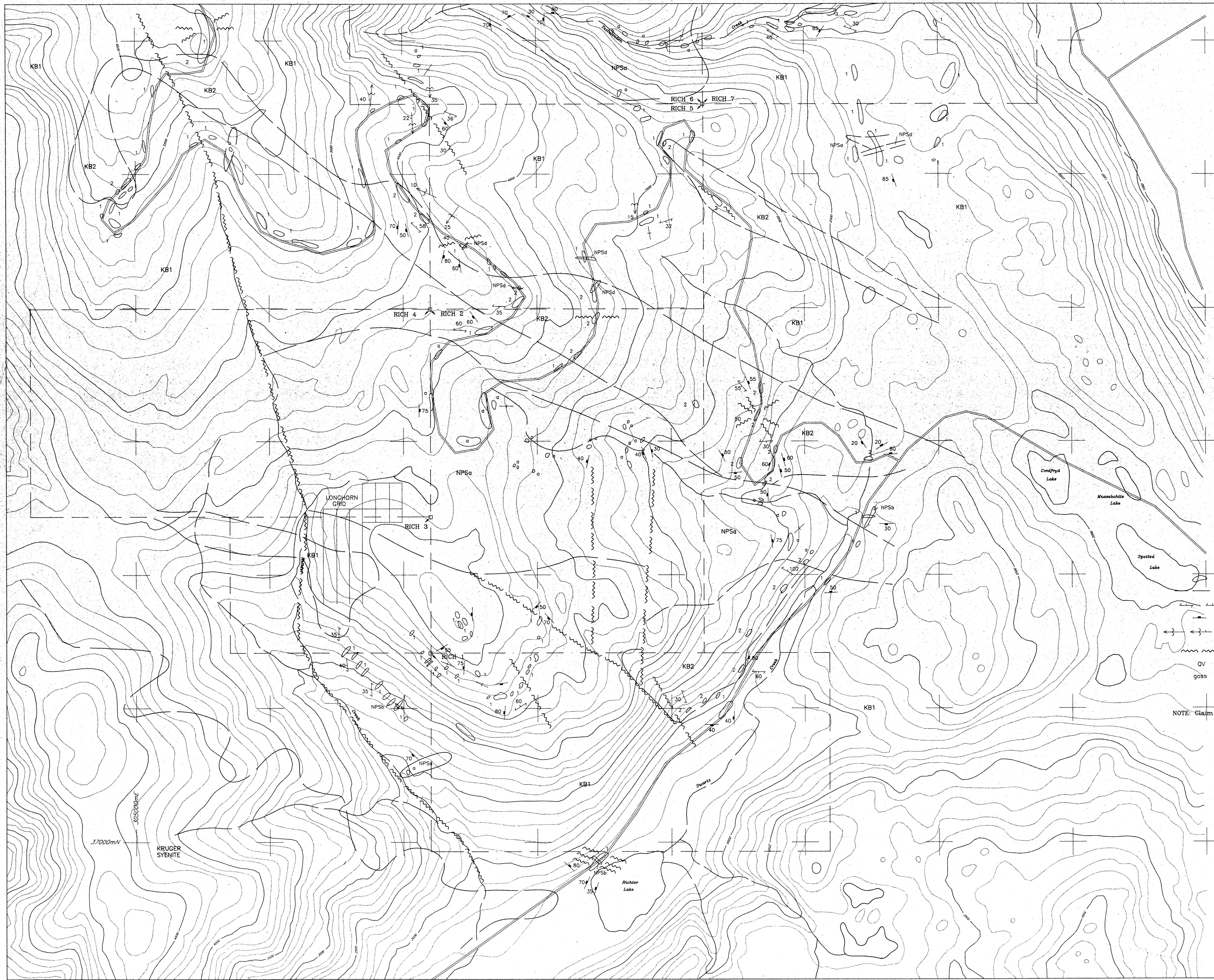
MINNOVA Inc.

RICHTER II GROUP
 NORTH SHEET

GENERAL GEOLOGY &
 GRID LOCATIONS



N.T.S. 92E/9H	SCALE: 1:10,000	FIG. No.
DATE: NOVEMBER 1990	REVISED:	5
DRAWN BY: C.J.C./90	FILE: RICHMOND	



LEGEND

- MESOZOIC
Triassic (?) Jurassic
- NPS Nelson Plutonic Suite
 - a Granodiorite
 - b Diorite
 - c Monzonite
 - d Gabbro

- PALEOZOIC
Carboniferous
- KB Kobau Group
 - 1 Quartzite
 - 2 Phyllite
 - 3 Calcareous Phyllite
 - 3a Marble

- Outcrop
- Geological Contact
- Foliation
- Fracture, Joint
- Fold: Plunge Known, Axial Plane Inclination Known, Multiple Folds
- Fault
- OV Quartz Vein
- goss Gossan

NOTE: Claim Boundaries Located with Respect to Roads

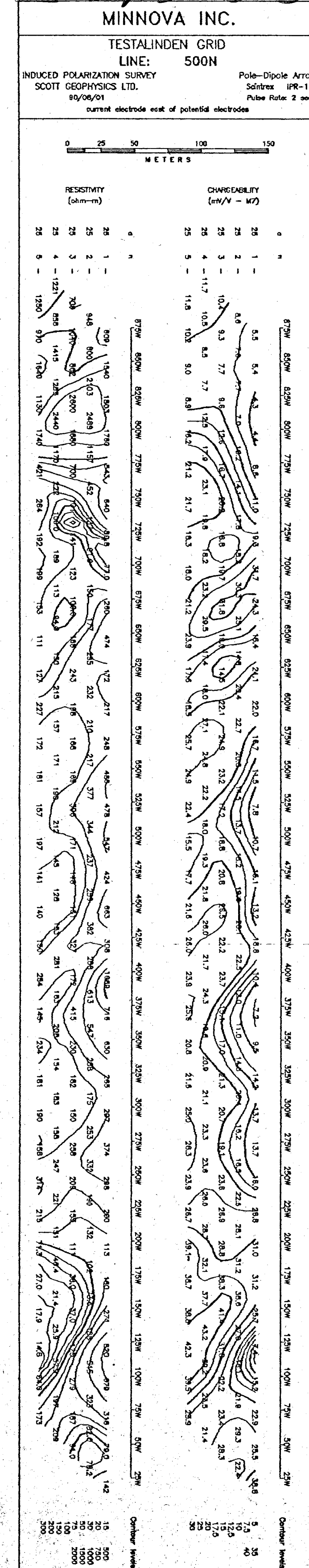
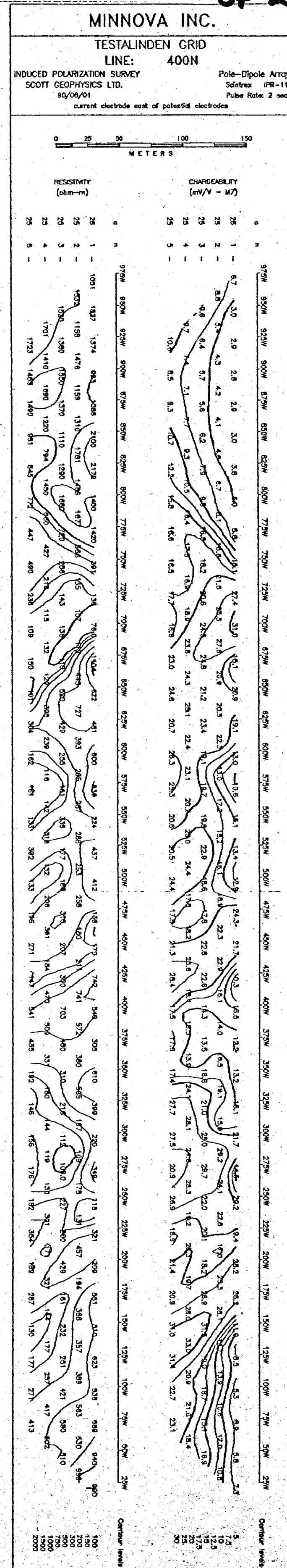
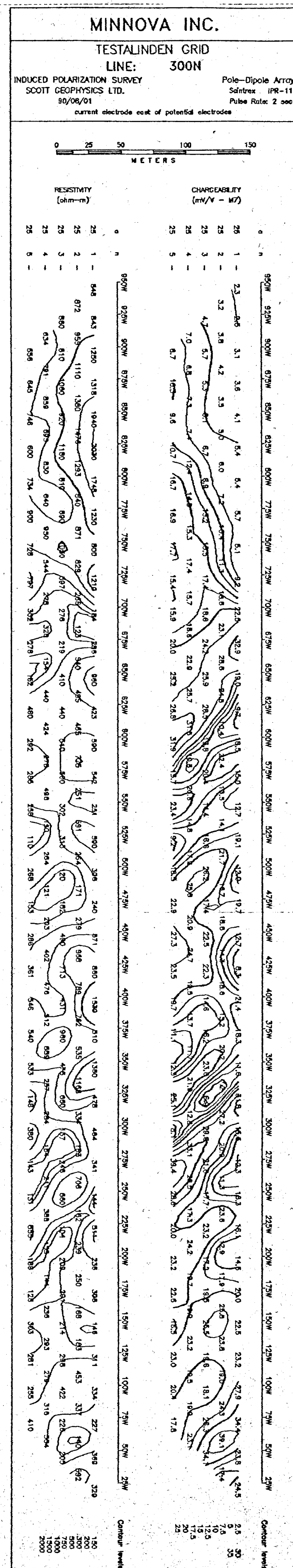
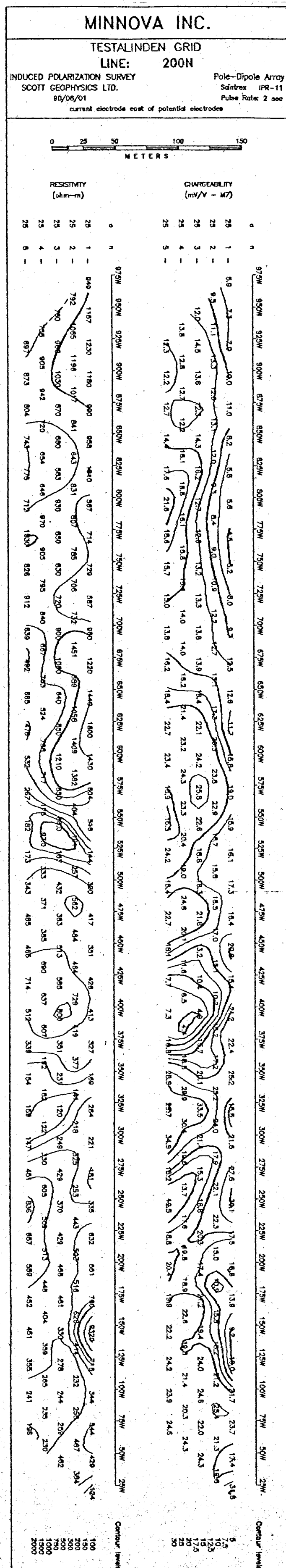
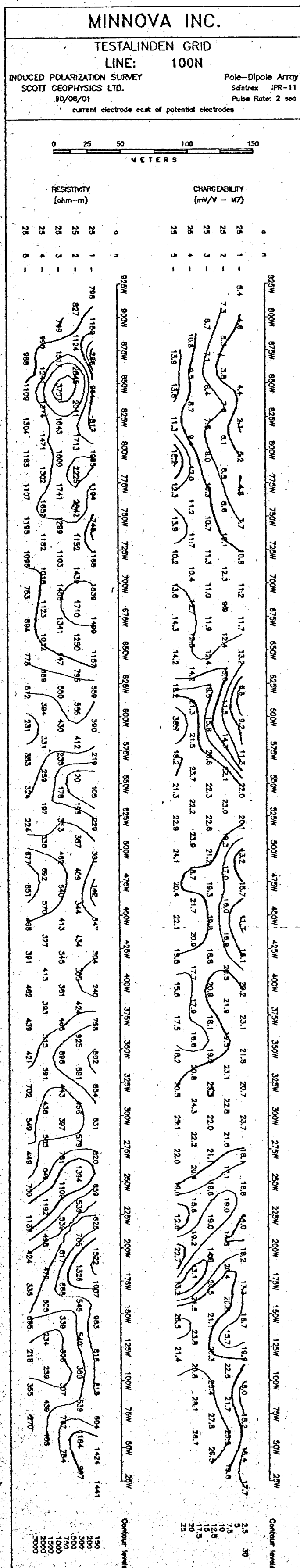
GEOLOGICAL BRANCH - ASSESSMENT REPORT

20,560
Part 2 of 2

MINNOVA Inc.	
RICHTER II & III GROUPS	
SOUTH SHEET	
GENERAL GEOLOGY & GRID LOCATION	
H.T.S. 92E/5W	SCALE: 1:10,000
DATE: NOV.1980	REVISED:
DRAWN BY: CJC/lsg	6

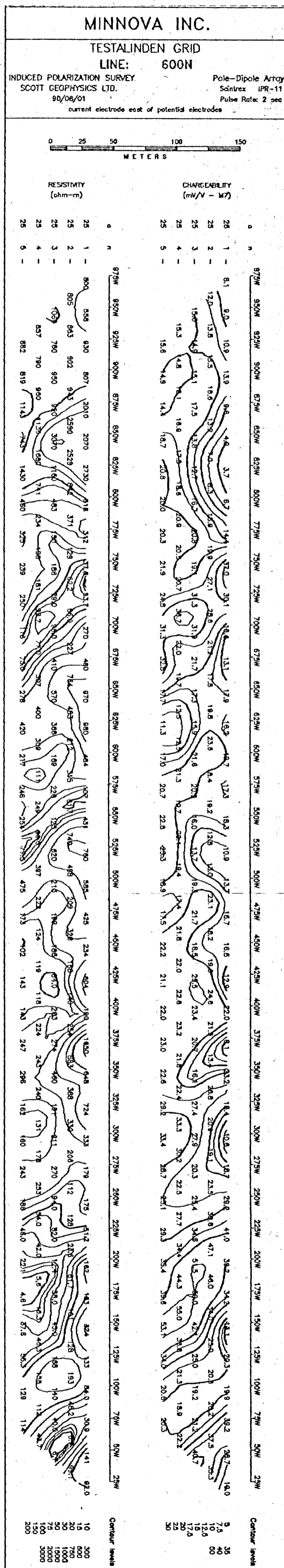
20,560

Part 2
of 2



RICHTER II GROUP
TESTALINDEN GRID
I.P. PSEUDOSECTION LINES 1N to 5N
FIGURE 8a

20,560





L A K E

ZONE A

ZONE B

- >3.7 Ag ppm ● > 41 Au ppb
- 2.9-3.7 Ag ppm ● 31-40 Au ppb
- 2.1-2.8 Ag ppm ● 21-30 Au ppb
- 1.2-2.0 Ag ppm ● 10-20 Au ppb

○ Ag ppm Au ppb

GEOLOGICAL BRANCH
ASSESSMENT REPORT

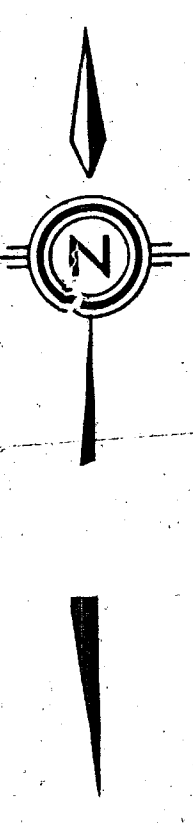
*Part 2
of 2*

20,560

MINNOVA Inc.
RICHTER III GROUP
LONGHORN GRID
SOIL GEOCHEMISTRY
Ag ppm Au ppb

0 25 50 75 100m
SCALE: 1:1000

N.T.S.	922/SW	SCALE: 1:1000	FIG. No.
DATE	NOVEMBER 1990	REVISED:	13
DRAWN BY:	RMV/ag	FILE: HORSOLD.DWG	



L A K E

ZONE A

ZONE B

Cu ppm	Pb ppm	Zn ppm
● > 240	● > 41	● > 190
● 191-240	● 36-40	● 171-190
● 141-190	● 31-35	● 151-170
● 90-140	● 25-30	● 130-150

○ Cu ppm Pb ppm Zn ppm

GEOLOGICAL BRANCH
ASSESSMENT REPORT

Part 2

20,560 of 2

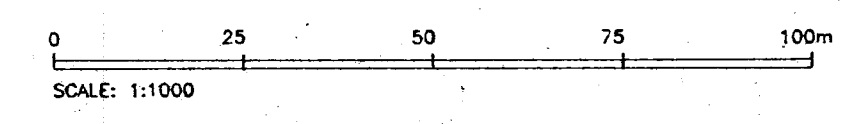
MINNOVA Inc.

RICHTER III GROUP

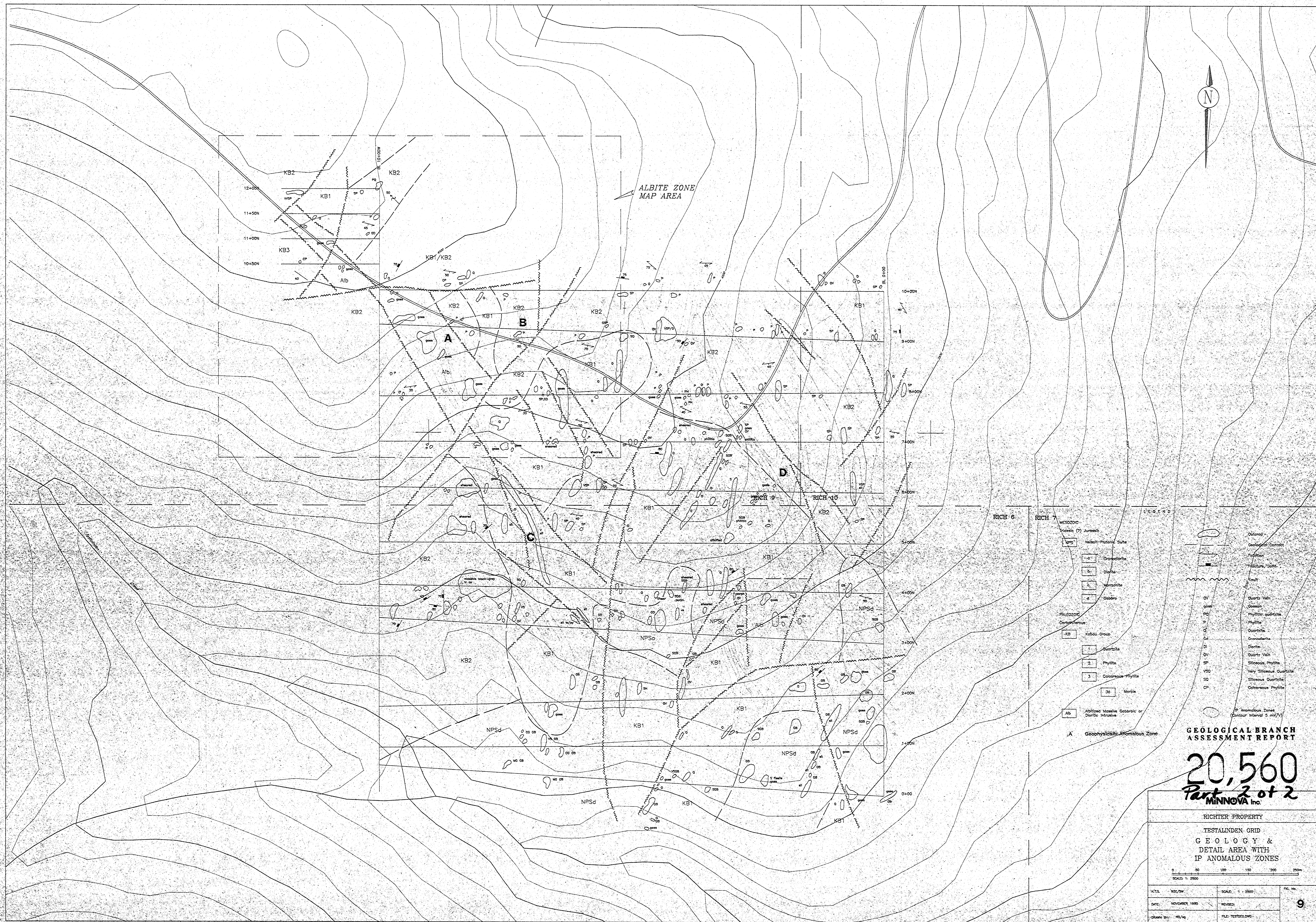
LONGHORN GRID

SOIL GEOCHEMISTRY

Cu ppm, Pb ppm, Zn ppm



N.T.S. 9/26/99	SCALE: 1:1000	FIG. No.
DATE: NOVEMBER 1999	REVISED:	14
DRAWN BY: RHP/vg	FILE: HORNSOLDWG	

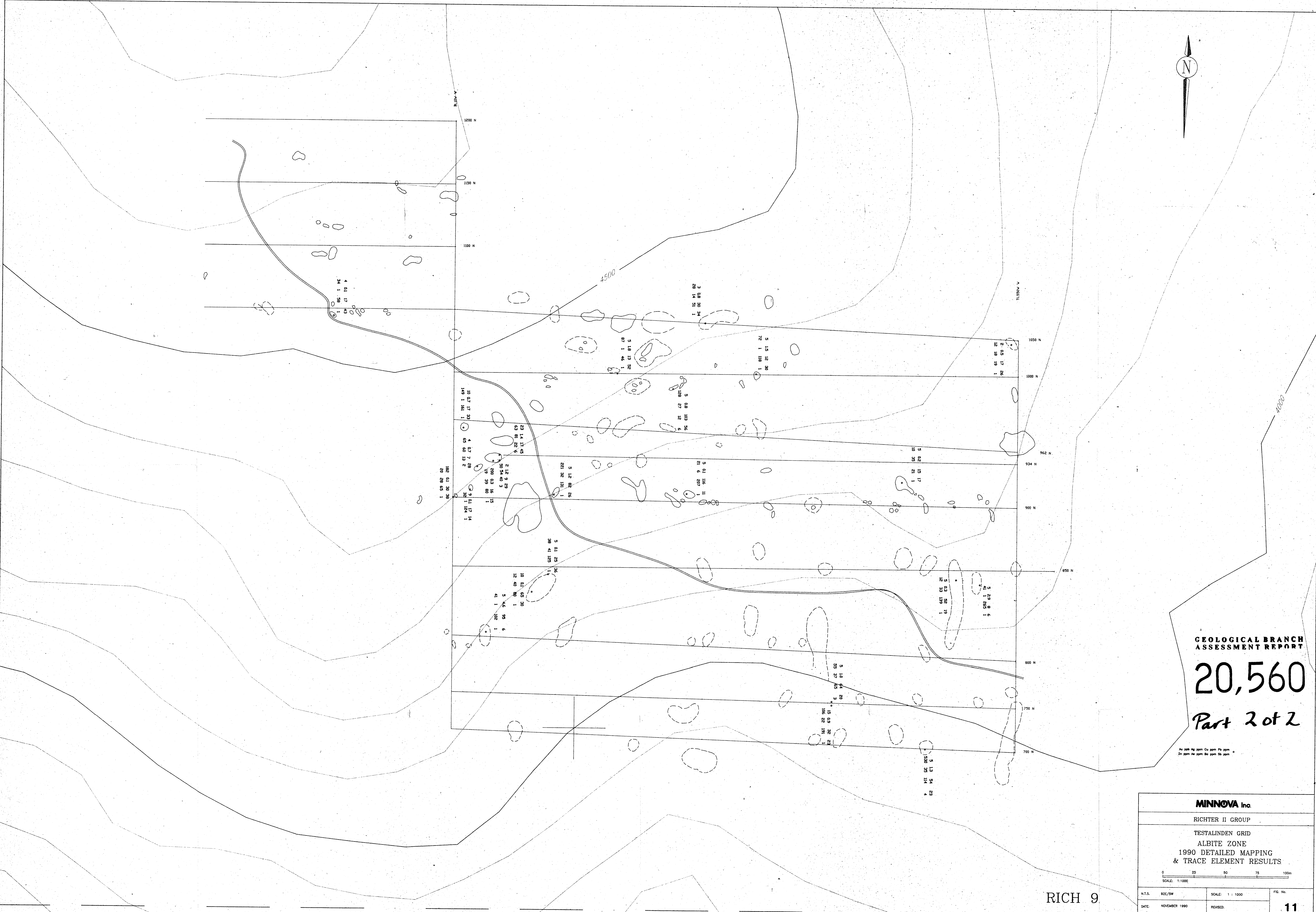
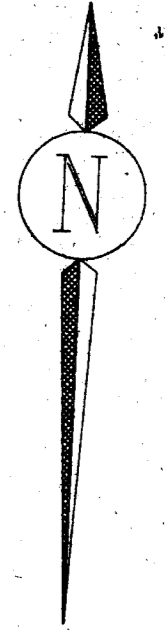


MESOZOIC	
Urb. (?) Jurassic	Urb. (?)
Nelson-Plintford Suite	Nelson-Plintford Suite
Oronodolite	Oronodolite
Diorite	Diorite
Monzonite	Monzonite
Gabbro	Gabbro
PALEOZOIC	
Carboniferous	Carboniferous
Keokuk Group	Keokuk Group
Quartzite	Quartzite
Phyllite	Phyllite
Calcareous Phyllite	Calcareous Phyllite
Marble	Marble
Alb	Albita Zone
A	Geophysically Anomalous Zone

**GEOLOGICAL BRANCH
ASSESSMENT REPORT**

20,560
Part 2 of 2
MINNOVA Inc.

RICHTER PROPERTY	
TESTALDEN GRID	
GEOLOGY & DETAIL AREA WITH IP ANOMALOUS ZONES	
SCALE: 1:2500	
INTS. 926/99	SCALE: 1:2500
DATE: NOVEMBER 1990	REVISED:
DRAWN BY: HJ/KJ	FILE: TESTALDEN
PG. No.	9



GEOLOGICAL BRANCH
ASSESSMENT REPORT

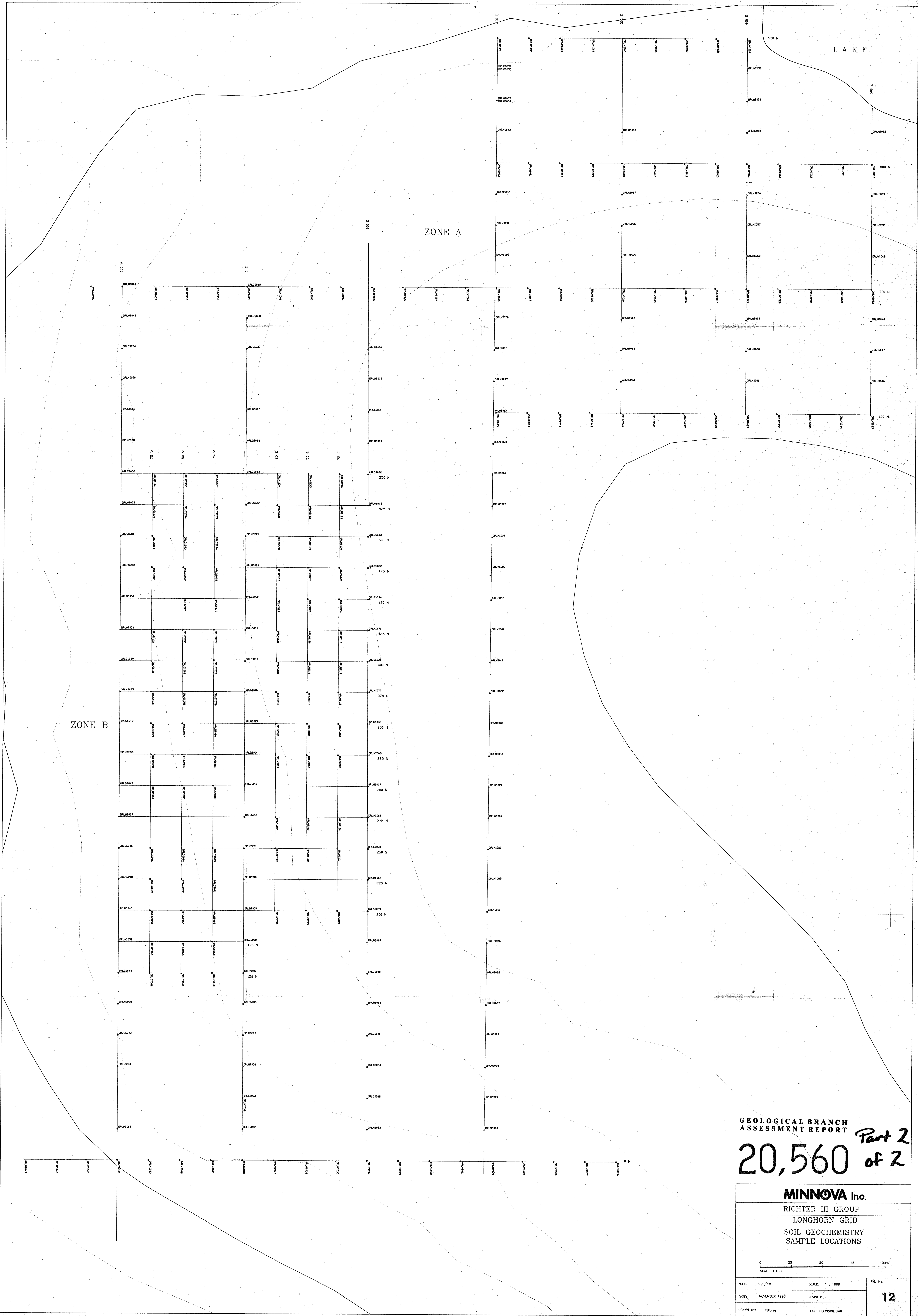
20,560

Part 2 of 2

At 99% An. 99% Cu. 99% Pb. 99%
Zn. 99% An. 99% Cu. 99% Pb. 99%

RICH 9

MINNOVA Inc.			
RICHTER II GROUP			
TESTALINDEN GRID			
ALBITE ZONE			
1990 DETAILED MAPPING & TRACE ELEMENT RESULTS			
SCALE: 1:1000 0 25 50 75 100m			
N.T.S.	R2E/SW	SCALE: 1:1000	FIG. No.
DATE:	NOVEMBER 1990	REVISED:	11
DRAWN BY:	GJC/sg	FILE:	ALRG02.DWG



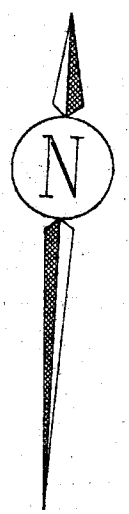
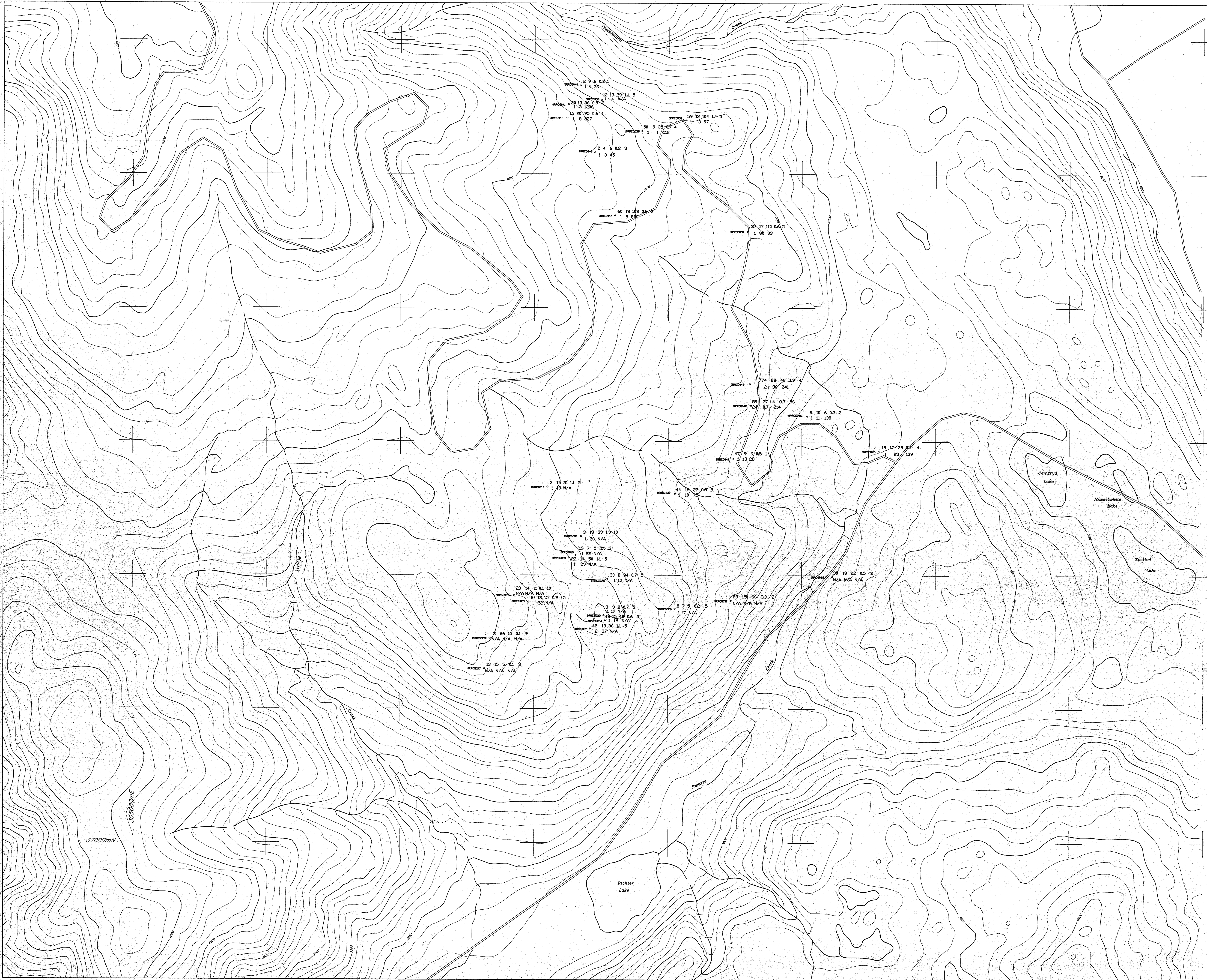
ZONE B

ZONE A

L A K E

GEOLOGICAL BRANCH
ASSESSMENT REPORT *Part 2*
20,560 *of 2*

MINNOVA Inc.		
RICHTER III GROUP LONGHORN GRID SOIL GEOCHEMISTRY SAMPLE LOCATIONS		
0 25 50 75 100m SCALE: 1:1000		
N.T.S.	#02/99	SCALE: 1:1000
DATE:	NOVEMBER 1999	REVISED:
DRAWN BY:	RJM/sg	FILE: HORN/SOIL.DWG
		12



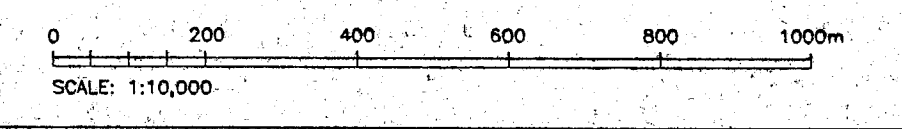
**GEOLOGICAL BRANCH
ASSESSMENT REPORT**

20,560
Part 2 of 2

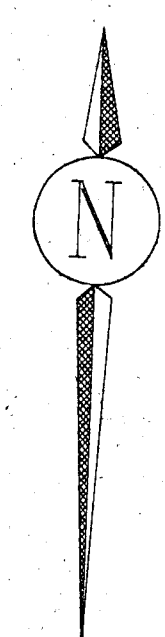
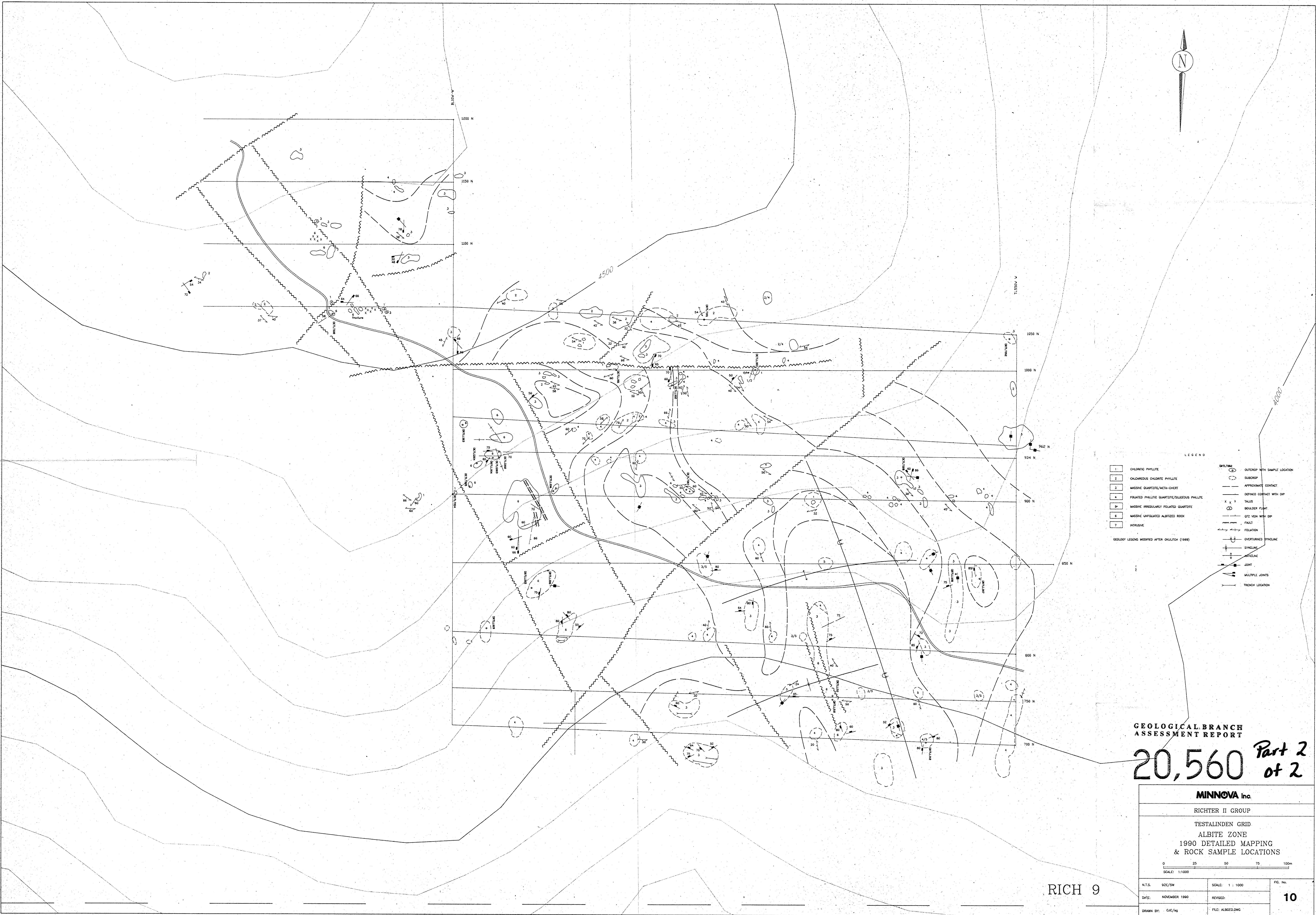
SAMPLE NUMBER \circ Cu(ppm) Pb(ppm) Zn(ppm) Ag(ppm) Au(ppb)
 \circ Sb(ppm) As(ppm) Ba(ppm)

MINNOVA Inc.

RICHTER II GROUP
SOUTH SHEET
 RECONNAISSANCE ROCK GEOCHEMISTRY
 SAMPLE LOCATIONS & RESULTS
 (Cu, Pb, Zn, Ag, Au, Sb, As, Ba)



N.T.S.	9/25/99	SCALE: 1:10,000	FIG. No.
DATE: NOV, 1999	REVISED:		7
DRAWN BY: CJC/sjg			



- LEGEND
- | | | | |
|---|--|-------|------------------------------|
| 1 | CHLORITIC PHYLLITE | ○ | OUTCROP WITH SAMPLE LOCATION |
| 2 | CHLORITOUS CHLORITE PHYLLITE | ○ | SUBCROP |
| 3 | MASSIVE QUARTZITE/META-CHERT | — | APPROXIMATE CONTACT |
| 4 | FOLIATED PHYLIC QUARTZITE/SILICEOUS PHYLLITE | — | DEFINED CONTACT WITH DIP |
| 5 | MASSIVE IRREGULARLY FOLIATED QUARTZITE | X X X | TALUS |
| 6 | MASSIVE UNFOLIATED ALBITIZED ROCK | ○ | BOULDER FLINT |
| 7 | INTRUSIVE | — | QZ VEN WITH DIP |
- GEOLGY LEGEND MODIFIED AFTER OKULITCH (1989)
- | | |
|---|---------------------|
| — | FAULT |
| — | FOLIATION |
| — | OVERTURNED SYNCLINE |
| — | SYNCLINE |
| — | ANTICLINE |
| — | JOINT |
| — | MULTIPLE JOINTS |
| — | TRENCH LOCATION |

GEOLOGICAL BRANCH
ASSESSMENT REPORT

20,560 *Part 2 of 2*

MINNOVA Inc.		
RICHTER II GROUP		
TESTALINDEN GRID		
ALBITE ZONE		
1990 DETAILED MAPPING & ROCK SAMPLE LOCATIONS		
0 25 50 75 100m SCALE: 1:1000		
N.T.S.	92E/DW	SCALE: 1 : 1000
DATE:	NOVEMBER 1990	REVISED:
DRAWN BY:	CJC/MJ	FILE: ALBGEOD.DWG
		FIG. No. 10

RICH 9