

GEOCHEMICAL AND GEOPHYSICAL REPORT  
ON THE KENA COPPER GRID  
FOR ASSESSMENT CREDITS ON  
THE SCHIST 1, SCHIST 2, SCHIST 3, SCHIST FR.,  
COTTONWOOD AND HALL  
MINERAL CLAIMS  
(K-GROUP)

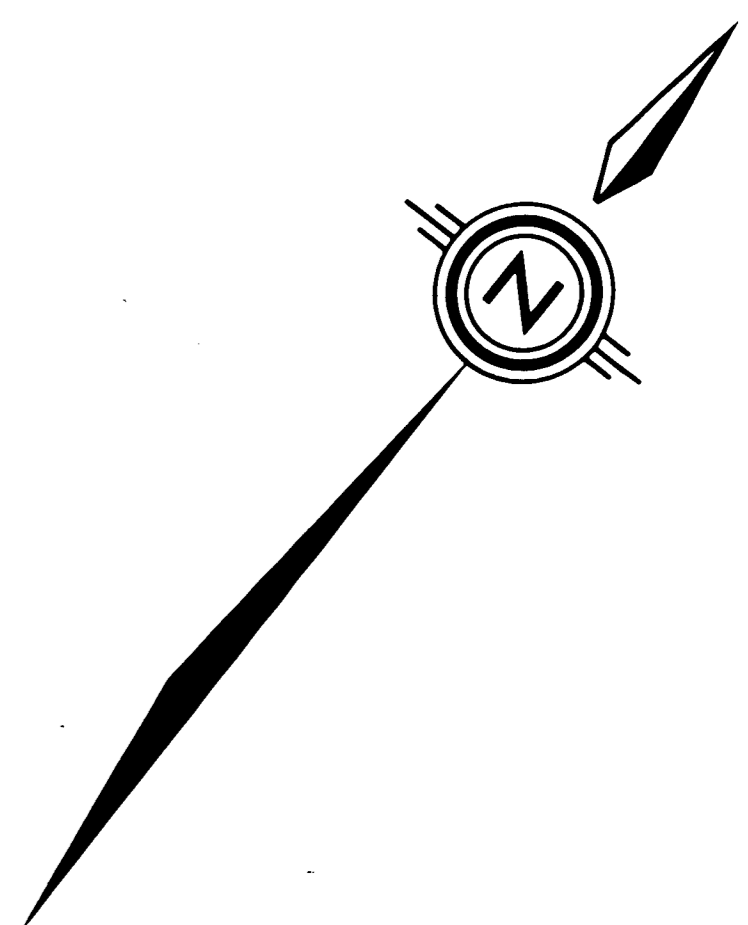
NELSON MINING DIVISION  
NTS 82F/6  
LAT. 49°26'10"; LONG. 117°16'40"; NTS 82F/6W

VOLUME II - GEOCHEMICAL MAPS

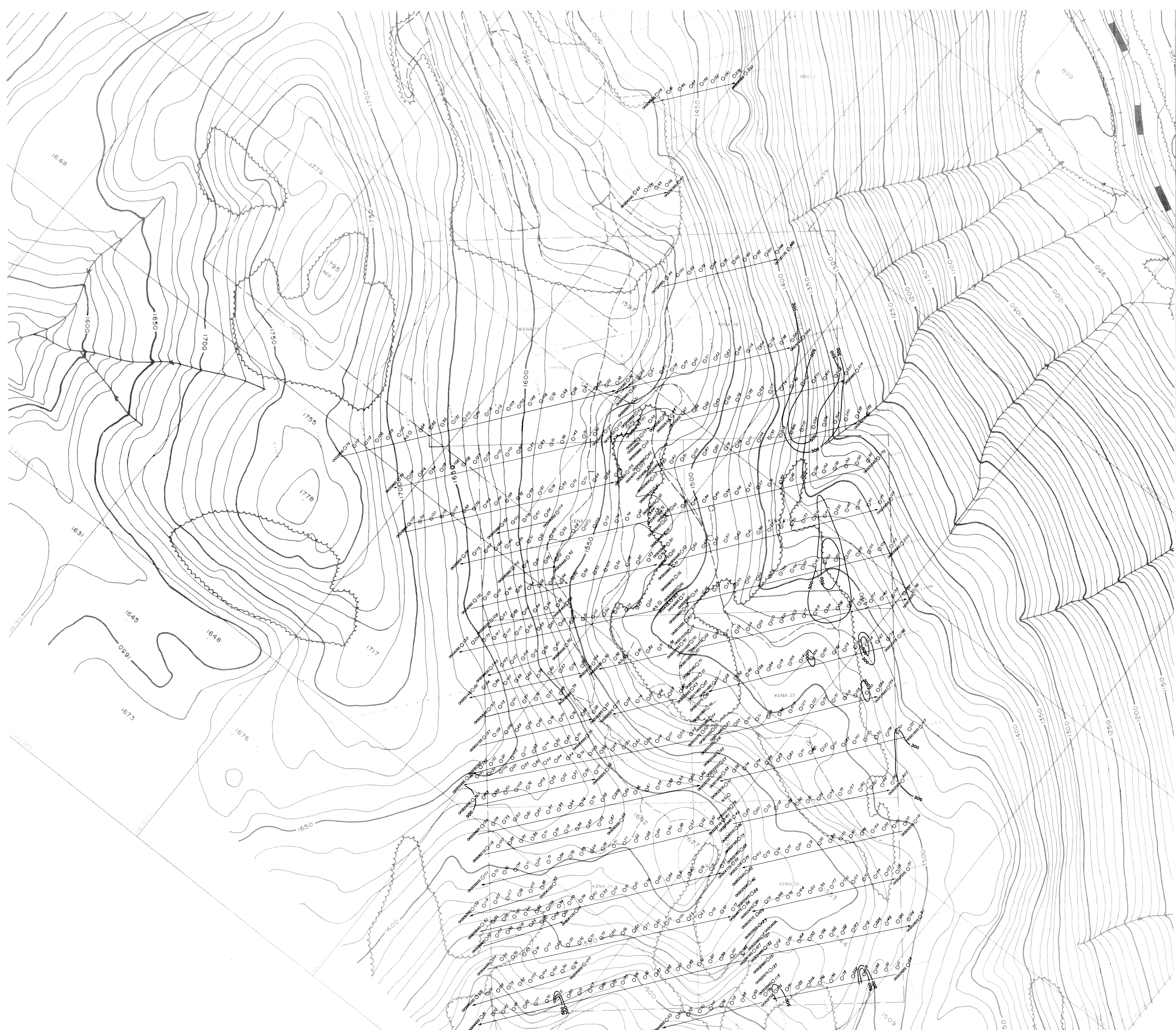
GEOLOGICAL BRANCH  
ASSESSMENT REPORT

20,634  
part 2 of 3

OWNER OF CLAIMS: OTTO & OTAKAR JANOUT, CHARLES PITTMAN  
OPERATOR: NORAMCO MINING CORPORATION  
AUTHOR: W.J. LEWIS  
DATE: DECEMBER 1990

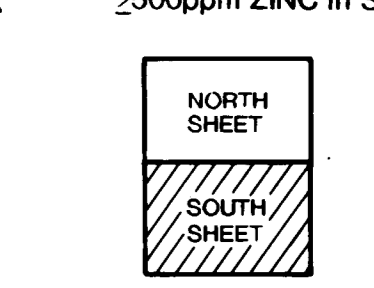


DECLINATION 21°



- LEGEND**
- ADIT
  - SHAFT
  - PROSPECT PIT
  - DIAMOND DRILL COLLAR, TRACE & NUMBER
  - ELEVATION MARKER
  - ELEVATION CONTOUR IN METRES
  - CREEK
  - ROAD, MAINLY 4-WHEEL DRIVE
  - RAILROAD
  - LOCATED CLAIM POST & BOUNDARY
  - CUT & PICKETED GRID LINE
  - FLAGGED GRID LINE
  - UTM COORDINATES

- NO SAMPLE
  - SOIL SAMPLE LOCATION & NUMBER
  - SILT SAMPLE LOCATION & NUMBER
  - 300 - 499ppm ZINC in SOILS (NON-HAUS)
  - 500ppm ZINC in SOILS (HIGHLY ANOMALOUS)
- Scale in Metres
- Scale: 0 50 100 150 200

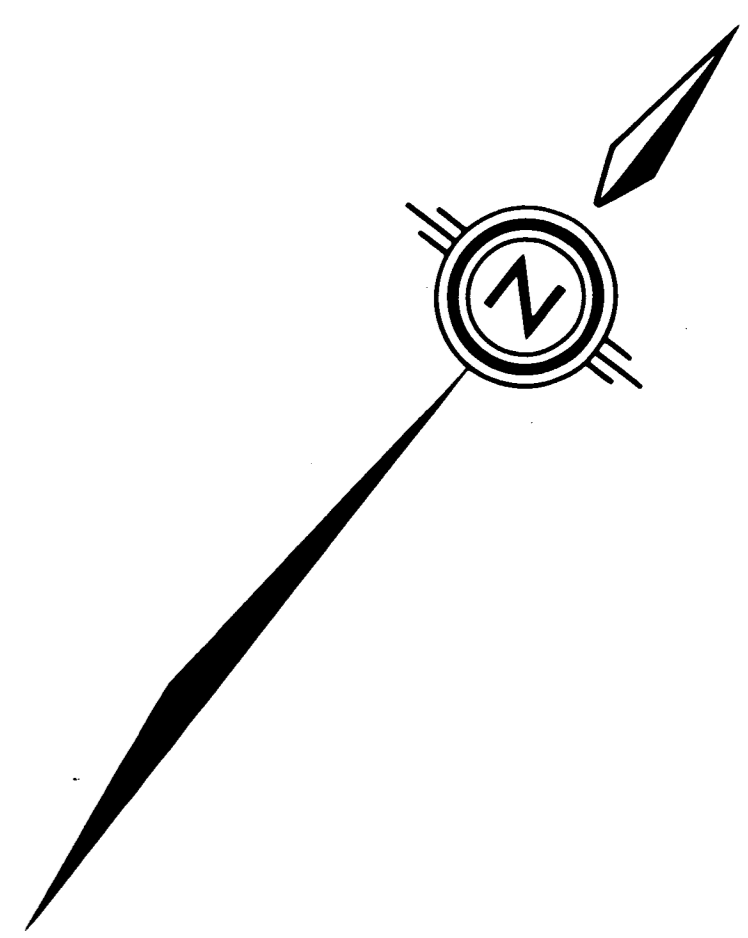


**NORAMCO MINING CORPORATION**  
**KENA PROJECT**  
**SOIL GEOCHEMISTRY**  
**ZINC**

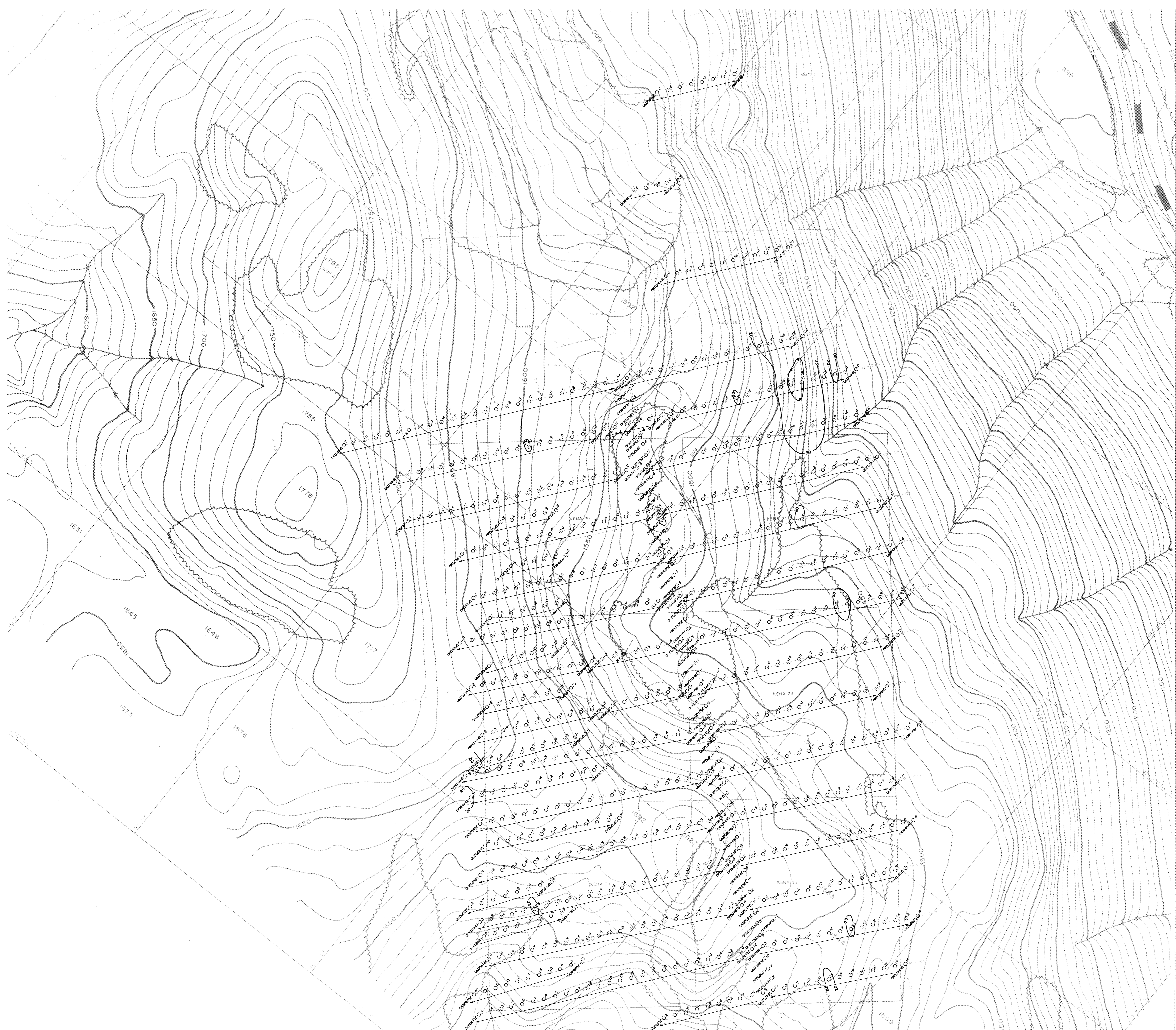
COMPANY NAME: NORAMCO MINING CORPORATION  
 PROPERTY NAME: KENA PROJECT  
 PROJECT NO: 111  
 DATE: December, 1990  
 SCALE: 1:2500

BY: E. USLE/W.J. LEWIS  
 CHECKED: LGC  
 DATE: 2012  
 SHEET: 7

GEOLOGICAL REPORT  
 ASSESSMENT REPORT  
**20624**  
 Part 2 of 3

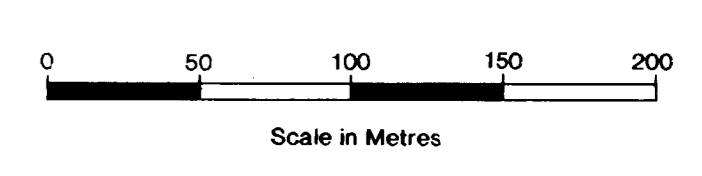
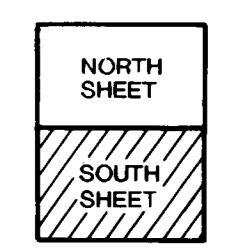


DECLINATION 21°



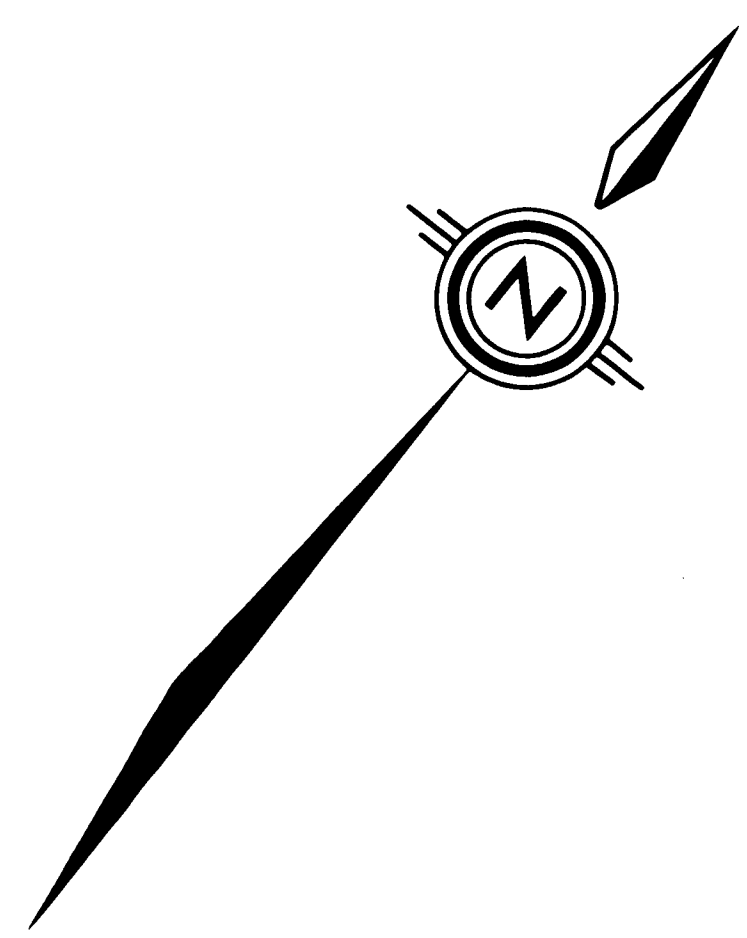
- LEGEND**
- ADIT
  - SHAFT
  - PROSPECT PIT
  - DIAMOND DRILL COLLAR, TRACE & NUMBER
  - 1648 ELEVATION MARKER
  - ELEVATION CONTOUR IN METRES
  - CREEK
  - ROAD, MAINLY 4-WHEEL DRIVE
  - RAILROAD
  - LOCATED CLAIM POST & BOUNDARY
  - CUT & PICKETED GRID LINE
  - FLAGGED GRID LINE
  - UTM COORDINATES

- NO SAMPLE
- SOIL SAMPLE LOCATION & NUMBER
- SILT SAMPLE LOCATION & NUMBER
- 20 - 69ppm ARSENIC in SOILS (AND ANALYSIS)
- 270ppm ARSENIC in SOILS (HIGHLY ANOMALOUS)

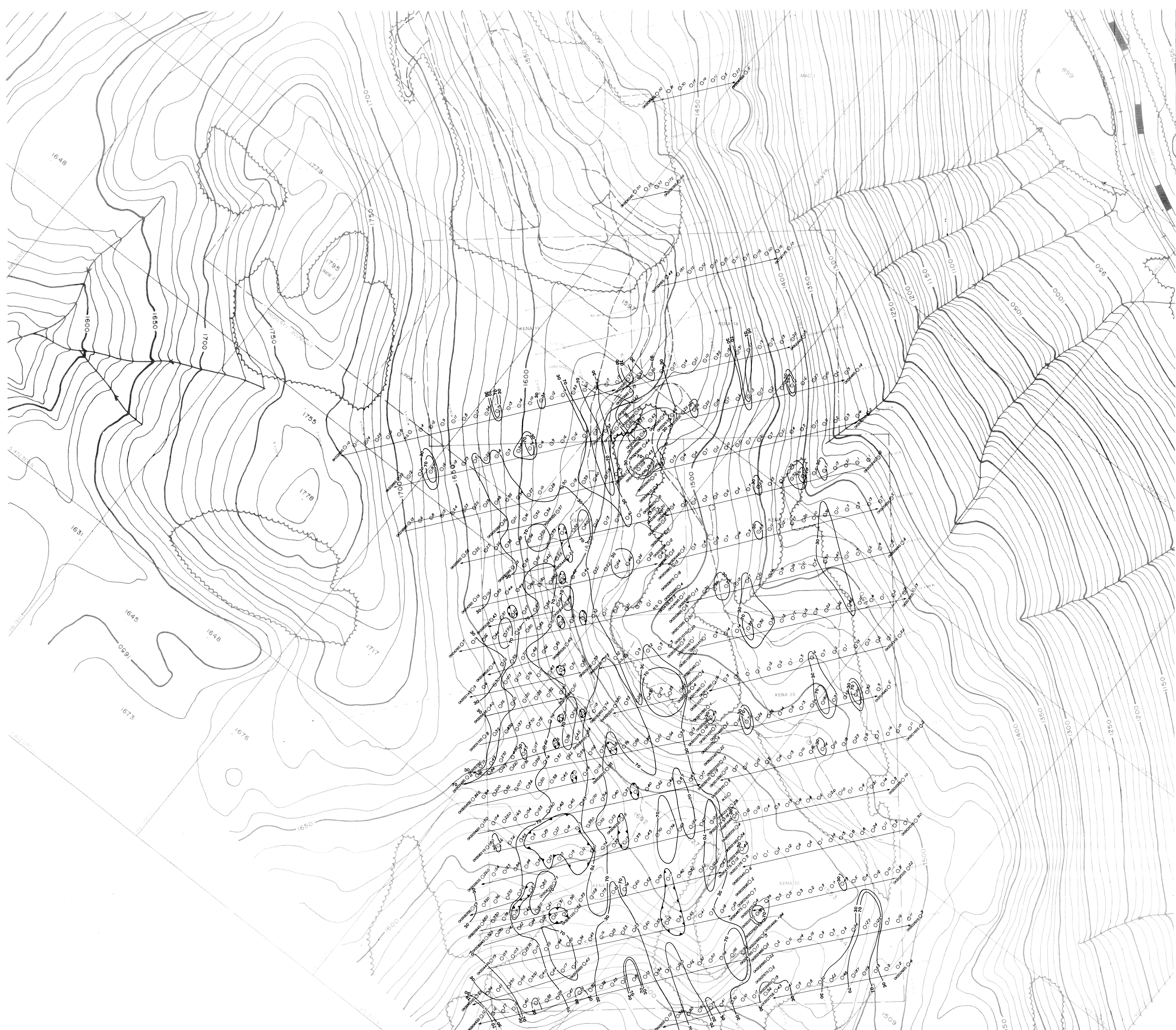


NORAMCO		NORAMCO	
COMPANY NAME: NORAMCO MINING CORPORATION			
PROPERTY NAME: KENA PROJECT			
<b>SOIL GEOCHEMISTRY</b>			
<b>ARSENIC</b>			
DATE: December, 1990	BY: E. LESLIE & J. LEWIS	SCALE: 1:2500	PROJECT: B

GEOLOGICAL BRANCH  
ASSESSMENT REPORT  
20634  
Part 2 of 3



DECLINATION 21°



**LEGEND**

- ADIT
- SHAFT
- PROSPECT PIT
- DIAMOND DRILL COLLAR, TRACE & NUMBER
- ELEVATION MARKER
- ELEVATION CONTOUR IN METRES
- CREEK
- ROAD, MAINLY 4-WHEEL DRIVE
- RAILROAD
- LOCATED CLAIM POST & BOUNDARY
- CUT & PICKETED GRID LINE
- FLAGGED GRID LINE
- UTM COORDINATES
- NO SAMPLE
- SOIL SAMPLE LOCATION & NUMBER
- SILT SAMPLE LOCATION & NUMBER
- 30 - 69ppb GOLD IN SOILS (NORMAL)
- 70 - 270ppb GOLD IN SOILS (HIGHLY MALICIOUS)

Scale in Metres

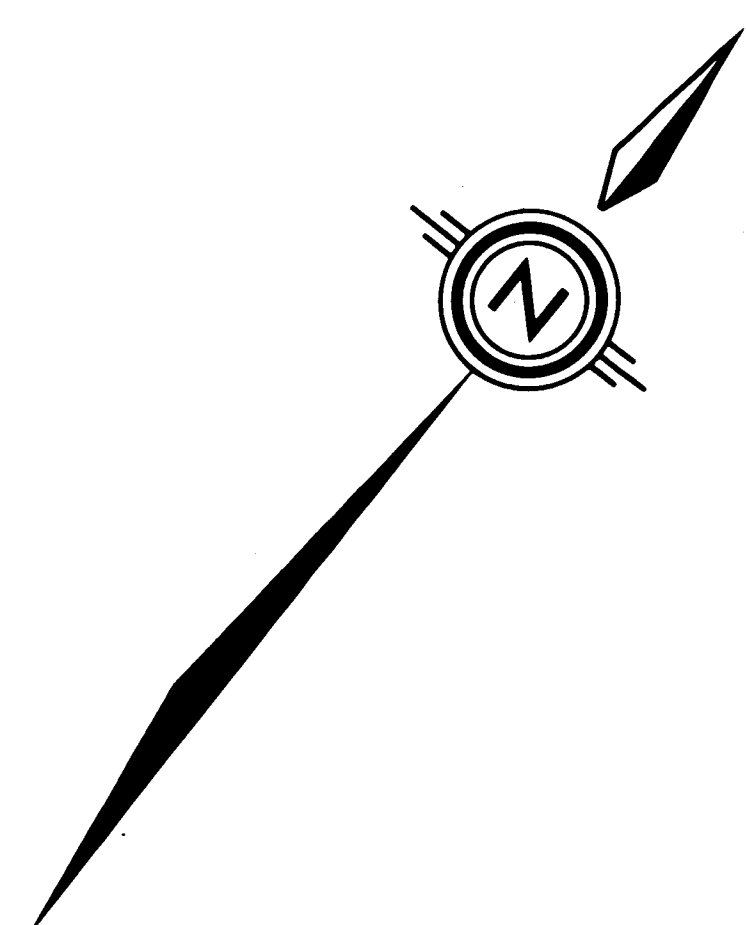
0 50 100 150 200

NORAMCO MINING CORPORATION	
KENA PROJECT	
<b>SOIL GEOCHEMISTRY</b>	
<b>GOLD</b>	
DATE: December, 1990	BY: E. LISLE/W.J. LEWIS
SCALE: 1:2500	PROJECT: 2012

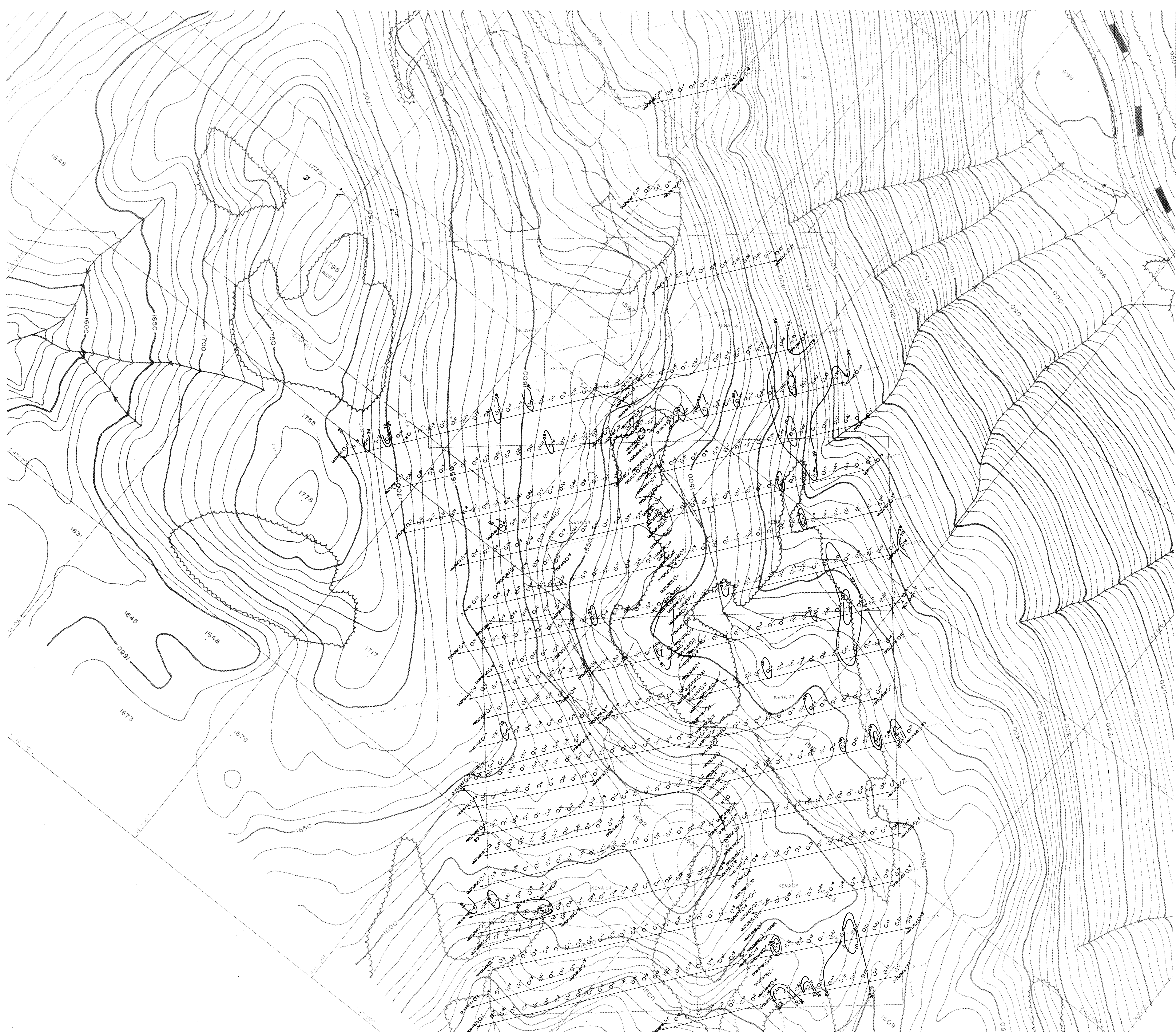
20634

Part 2 of 3

GEOLOGICAL BRANCH  
ASSESSMENT REPORT

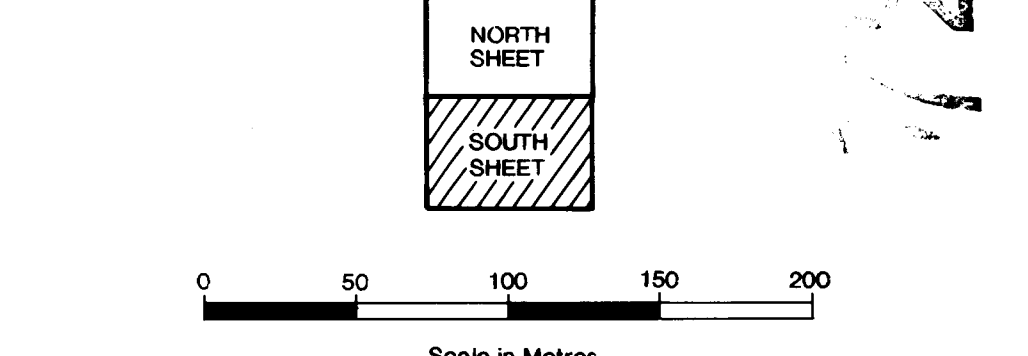


DECLINATION 21°



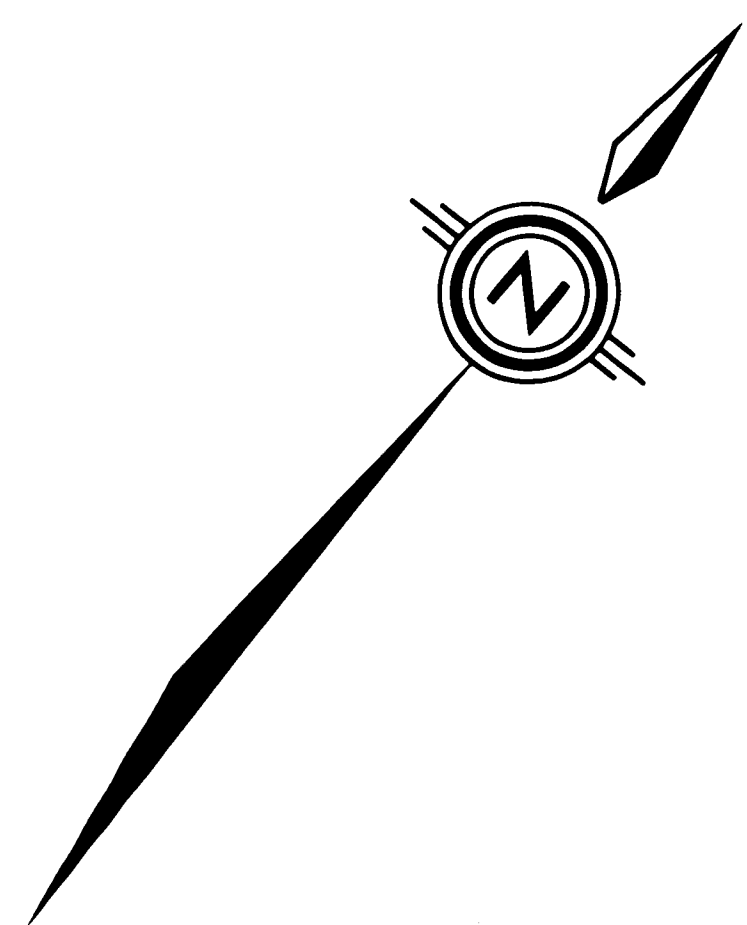
- LEGEND**
- ADIT
  - SHAFT
  - PROSPECT PIT
  - DIAMOND DRILL COLLAR, TRACE & NUMBER
  - ELEVATION MARKER
  - ELEVATION CONTOUR IN METRES
  - CREEK
  - ROAD, MAINLY 4-WHEEL DRIVE
  - RAILROAD
  - LOCATED CLAIM POST & BOUNDARY
  - CUT & PICKETED GRID LINE
  - FLAGGED GRID LINE
  - UTM COORDINATES

- NO SAMPLE
- SOIL SAMPLE LOCATION & NUMBER
- SILT SAMPLE LOCATION & NUMBER
- 39 - 68ppm LEAD in SOILS (PROBABLE)
- 270ppm LEAD in SOILS (HIGHLY ANOMALOUS)

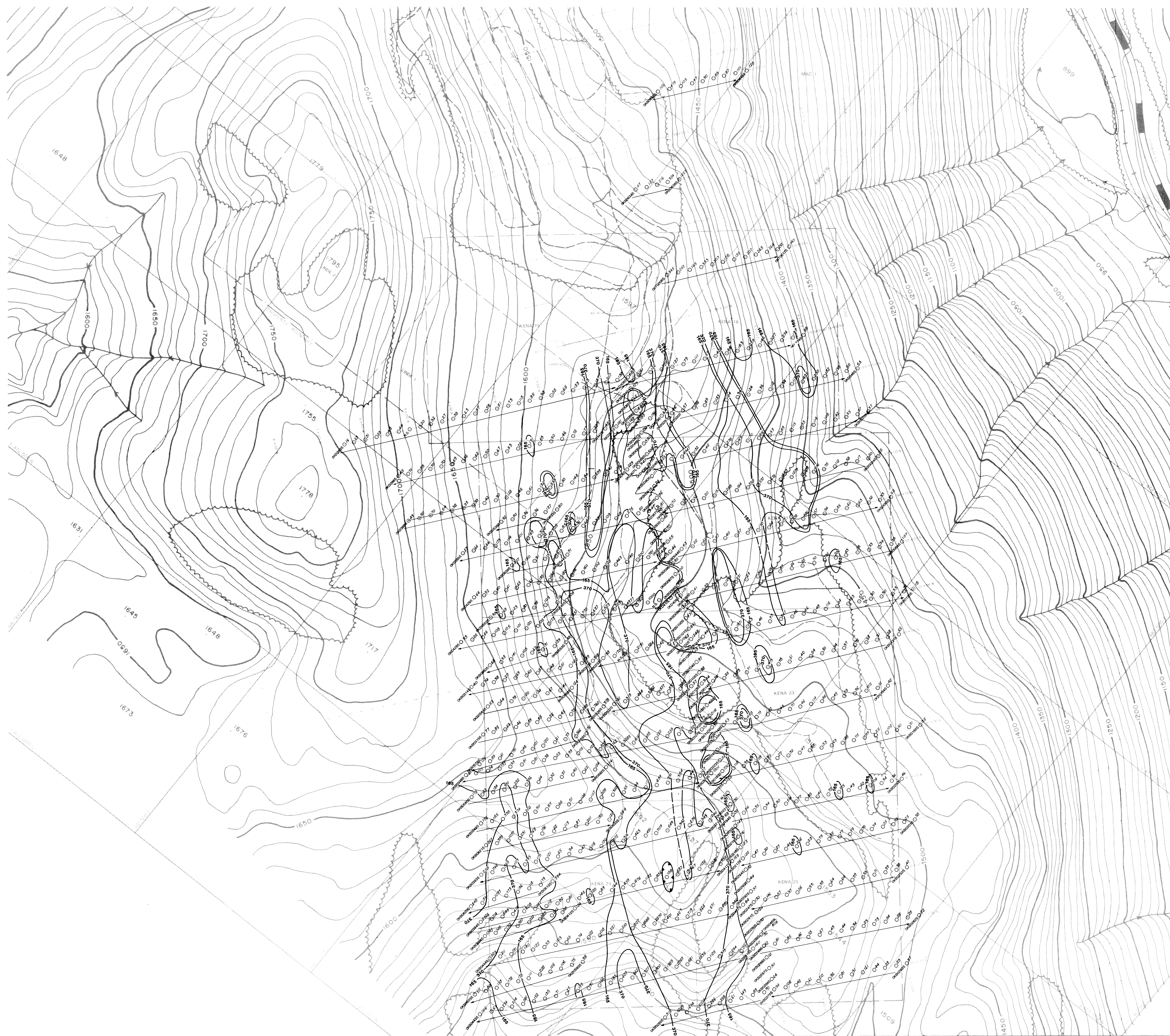


NORAMCO		NORAMCO	
COMPANY NAME: NORAMCO MINING CORPORATION			
PROPERTY NAME: KENA PROJECT			
<b>SOIL GEOCHEMISTRY LEAD</b>			
PROJECT:	PROJECT MANAGER: T. LISLE/W. LEWIS	DATE:	DATE:
1990	2012	2012	2012
1:2500	6		

2012  
GEOLOGICAL BRANCH Part 2 of 3  
ASSESSMENT REPORT



DECLINATION 21°



LEGEND

- ADIT
- SHAFT
- PROSPECT PIT
- DIAMOND DRILL COLLAR, TRACE & NUMBER
- ELEVATION MARKER
- ELEVATION CONTOUR IN METRES
- CREEK
- ROAD, MAINLY 4-WHEEL DRIVE
- RAILROAD
- LOCATED CLAIM POST & BOUNDARY
- CUT & PICKETED GRID LINE
- FLAGGED GRID LINE
- UTM COORDINATES
- NO SAMPLE
- SOIL SAMPLE LOCATION & NUMBER
- SILT SAMPLE LOCATION & NUMBER
- 2165 - 369ppm COPPER IN SOILS (ANOMALOUS)
- 370

PROSPECT ASSESSMENT REPORT

201634

Scale in Metres

NORAMCO MINING CORPORATION	
PROPERTY NAME: KENA PROJECT	
<b>SOIL GEOCHEMISTRY</b>	
<b>COPPER</b>	
DATE: December 1990	PROJECT NO: 2012
SCALE: 1:2500	SHEET: 5

Part 2 of 3