

Percussion Drilling Report

- on the -

Venus 2, Venus 4 and Venus 11 Fr  
Mineral Claims

Kamloops Mining Division, British Columbia  
N.T.S. 92I/9

- for -

Getchell Resources Inc.  
#740, 175 - 2nd Avenue  
Kamloops, B. C.  
V2C 5W1

Prepared by:

G. Belik and Associates Ltd.  
664 Sunvalley Drive  
Kamloops, B. C.  
V2B 6S4

G.D. Belik, M.Sc.  
December 12, 1990

20663

Table of Contents

	<u>Page No.</u>
SUMMARY . . . . .	3
INTRODUCTION . . . . .	3
CLAIMS . . . . .	4
LOCATION AND ACCESSIBILITY . . . . .	5
PHYSIOGRAPHY AND VEGETATION . . . . .	5
GEOLOGICAL SETTING . . . . .	6
PREVIOUS EXPLORATION. . . . .	7
1990 DRILL PROGRAM . . . . .	7
CONCLUSIONS AND RECOMMENDATIONS . . . . .	9

FIGURES:

Property Location Map . . . . .	DRWG No. 1
Claim Map . . . . .	DRWG No. 2
Drill Hole Location Map . . . . .	DRWG No. 3

APPENDIX:

- I: Drill Logs
- II: Assay Certificates
- III: Statement of Expenditures
- IV: Statement of Qualifications:  
G.D. Belik

LOG NO: 12-20	RD.
ACTION:	
FILE NO:	

**GEOLOGICAL BRANCH  
ASSESSMENT REPORT**

20663

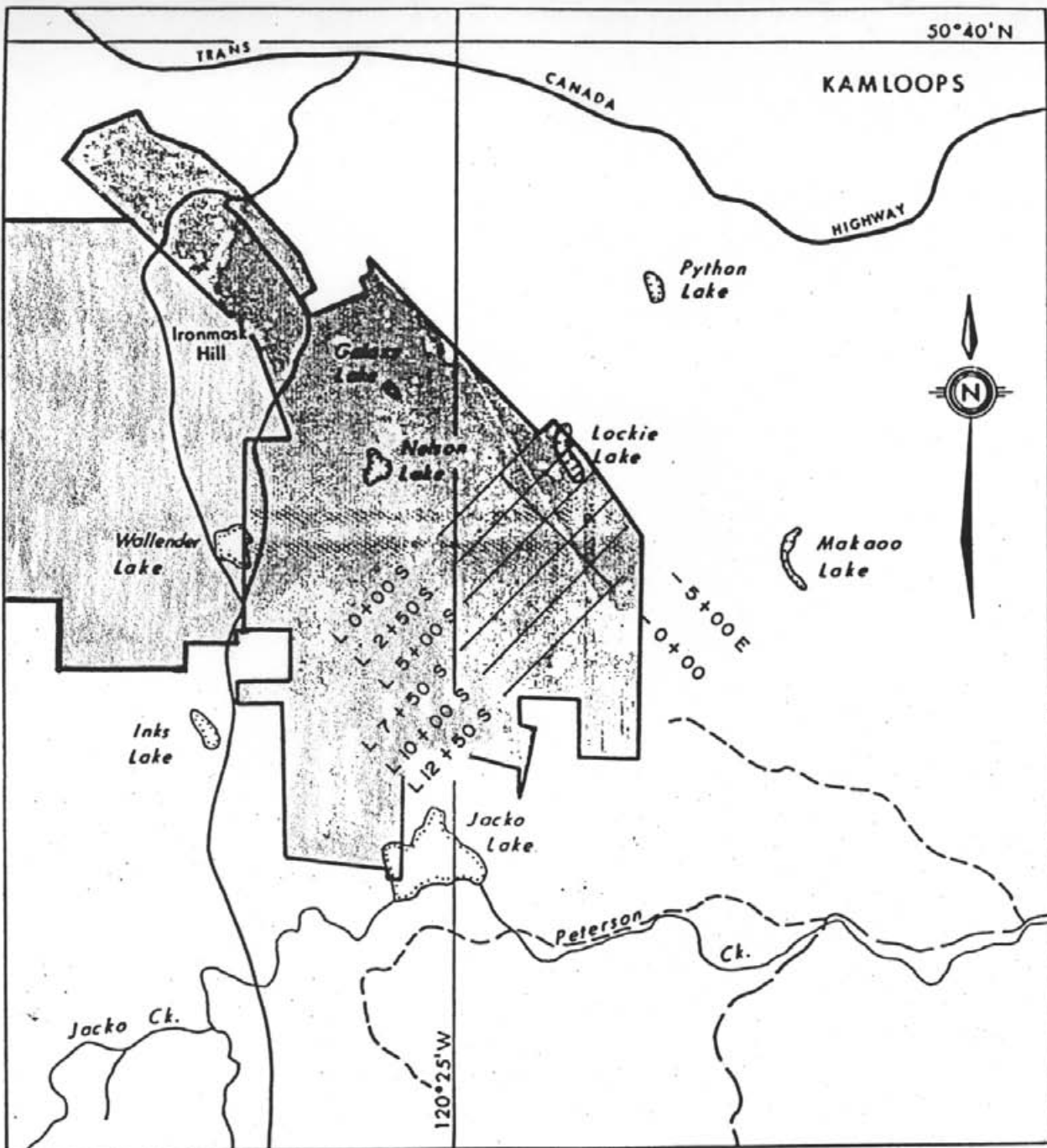


FIGURE 1

GETCHELL RESOURCES INC.

PROPERTY LOCATION  
 GALAXY PROJECT  
 KAMLOOPS MINING DIVISION

Date	Scale	NTS	Drwg No.
MAY 1990	1:50 000	92I / 9	

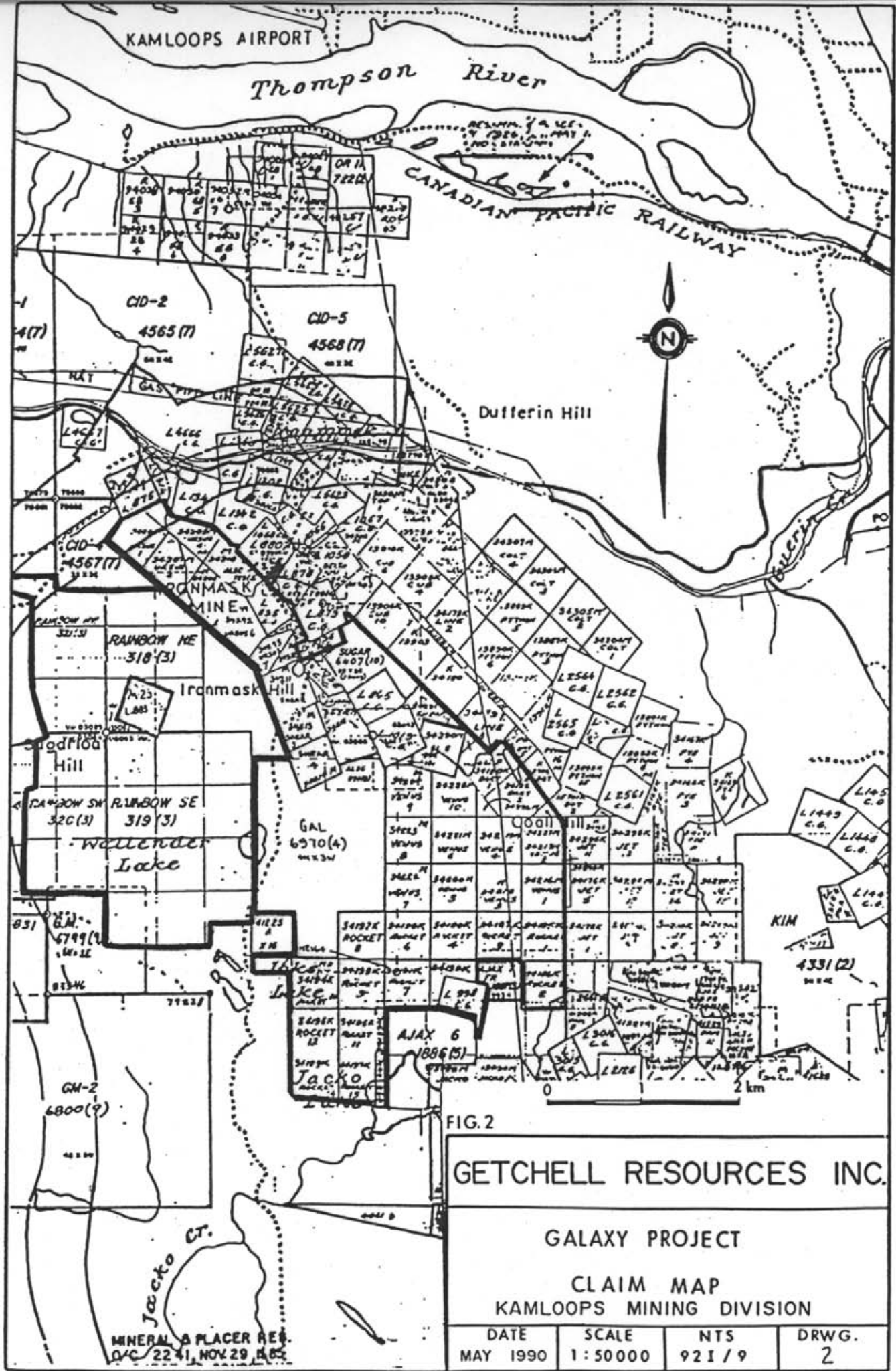


FIG. 2

GETCHELL RESOURCES INC.

GALAXY PROJECT

CLAIM MAP  
KAMLOOPS MINING DIVISION

DATE	SCALE	NTS	DRWG.
MAY 1990	1:50000	921/9	2

MINERAL & PLACER RES.  
D/C 22 41, NOV. 29, 1985

## SUMMARY

The Venus 2, Venus 4 and Venus 11 Fr mineral claims are predominantly underlain by dioritic phases of the Late Triassic Iron Mask Batholith. The Iron Mask Batholith hosts several alkaline-type, porphyry copper/gold deposits, most notably the Afton Deposit located about 9km northwest of the claim area and the Ajax deposit located about 2km to the southeast.

Four percussion drill holes (reverse circulation) were completed during the 1990 program and tested a broad, relatively weak, northwest-trending, Induced Polarization anomaly which is about 1km long and 200 meters to 400 meters wide. The Induced Polarization anomaly was identified by a survey carried out by Pacific Geophysical Limited, for Getchell Resources Inc., in May, 1990.

All of the drill holes penetrated dark green chloritic diorite (Iron Mask phase) which locally is cut by silicified and veined monzonite/syenite dykes (Cherry Creek phase).

No significant mineralization is evident in any of the drill holes. Magnetite is present in the diorite unit as coarse blebs and fine-grained disseminations in amounts up to 7%.

## INTRODUCTION

A reverse circulation, down-the-hole hammer, percussion

drill program, totalling 198.12 meters in 4 holes (RC90-9 to RC90-12), was completed on the Venus 2, Venus 4 and Venus 11 Fr mineral claims for Getchell Resources Inc., under the supervision of G. Belik of G. Belik and Associates Limited, during the period November 1 to November 4, 1990.

The percussion drill was owned and operated by Dateline Contracting Limited, #9 - 950 La Franco Road, Kelowna, B. C.

All the holes drilled are approximately 10.5cm in diameter. Approximately 3kg of cuttings were collected from each 10 foot interval and are presently held in storage in Kamloops. Duplicate splits from drill holes RC90-11 and RC90-12 have been assayed for copper. Assay results are shown on the drill logs which accompany this report.

#### CLAIMS

All of the drill holes were completed within the boundaries of the adjoining Venus 2, Venus 4 and Venus 11 Fr mineral claims which, for assessment purposes, have been grouped with the following contiguous mineral claims to form the Galaxy South Group:

#### Galaxy South Group

<u>Name of Claim</u>	<u>No. of Units</u>	<u>Title Number</u>	<u>N.T.S. Reference</u>
Venus 1	1	34216	92I/9W
Venus 2	1	34217	"
Venus 3	1	34218	"

Venus 4	1	34219	"
Venus 5	1	34220	"
Venus 6	1	34221	"
Venus 7	1	34222	"
Venus 8	1	34223	"
Venus 9	1	34224	"
Venus 10	1	34225	"
Venus 11 Fr	1	34226	"
Dart 1	1	34181	"
Dart 2	1	34182	"
Dart 3	1	34227	"
Gal	12	6970	"
Number 7 C.G.	1	L998	"

The registered owner of all of the above claims is Abermin Corporation. Getchell Resources Inc. has an option to earn a majority interest in the property.

#### LOCATION AND ACCESSIBILITY

The Galaxy Property, comprised of the Galaxy North and Galaxy South claim groups covers approximately 2,200 hectares, centered about 8km southwest of Kamloops, B. C.

The Lac Le Juene Highway traverses the claim area and several secondary roads and a pipeline right-of-way provide easy access to most parts of the claim area.

#### PHYSIOGRAPHY AND VEGETATION

The mean elevation of the property is about 800 meters (a.s.l.). The property is typical of the Kamloops-Cache Creek semi-arid belt and typified by open grasslands and sage-covered hills with local stands of spruce, pine and dry-belt fir.

## GEOLOGICAL SETTING

The author has carried out only minor geological mapping within the Galaxy claim group. The following general account of the geological setting of the property is contained in a report by A.D. McLaughlin (1988) which has been filed for assessment credit:

"The New Galaxy Group is underlain predominantly by the Iron Mask Batholith. This Triassic-Jurassic batholith is an elongate northwest trending body composed of two plutons; the Iron Mask and the later Cherry Creek. Within the former, four intrusive phases are present: the Iron Mask Hybrid, Pothook, Sugarloaf and Cherry Creek. The Cherry Creek pluton consists wholly of the Cherry Creek phase. The intrusion is an alkaline complex that has evolved from diorite in the early Iron Mask Hybrid phase to locally syenitic in the last Cherry Creek phase.

The batholith has been emplaced and is comagmatic with the Upper Triassic Nicola Group. This group comprises andesitic to basaltic volcanics and accompanying volcanoclastics. Locally picrite intrusives are present possibly related to the Nicola Group.

Unconformably overlying this batholith-volcanic suite are volcanics and sediments of the Tertiary Kamloops Group.

Major northwest, north and northeast trending faults have controlled and modified the emplacement of various units of the batholith. Post batholith movement on marginal faults have resulted in graben-like structures with the country rock on the down thrown side (Northcote, 1977).

Numerous copper (+ gold) prospects, including the Afton Deposit, are located throughout the batholith. The mineralization is structurally controlled; especially important are the northwest trending faults. It is likely related to hydrothermal activity during the final Cherry Creek phase. Primary mineralization consists of chalcopyrite and bornite veinlets and fracture coatings. Later supergene modification has generated a chalcocite-native copper assemblage. Gold and silver are present in both types."



## PREVIOUS EXPLORATION

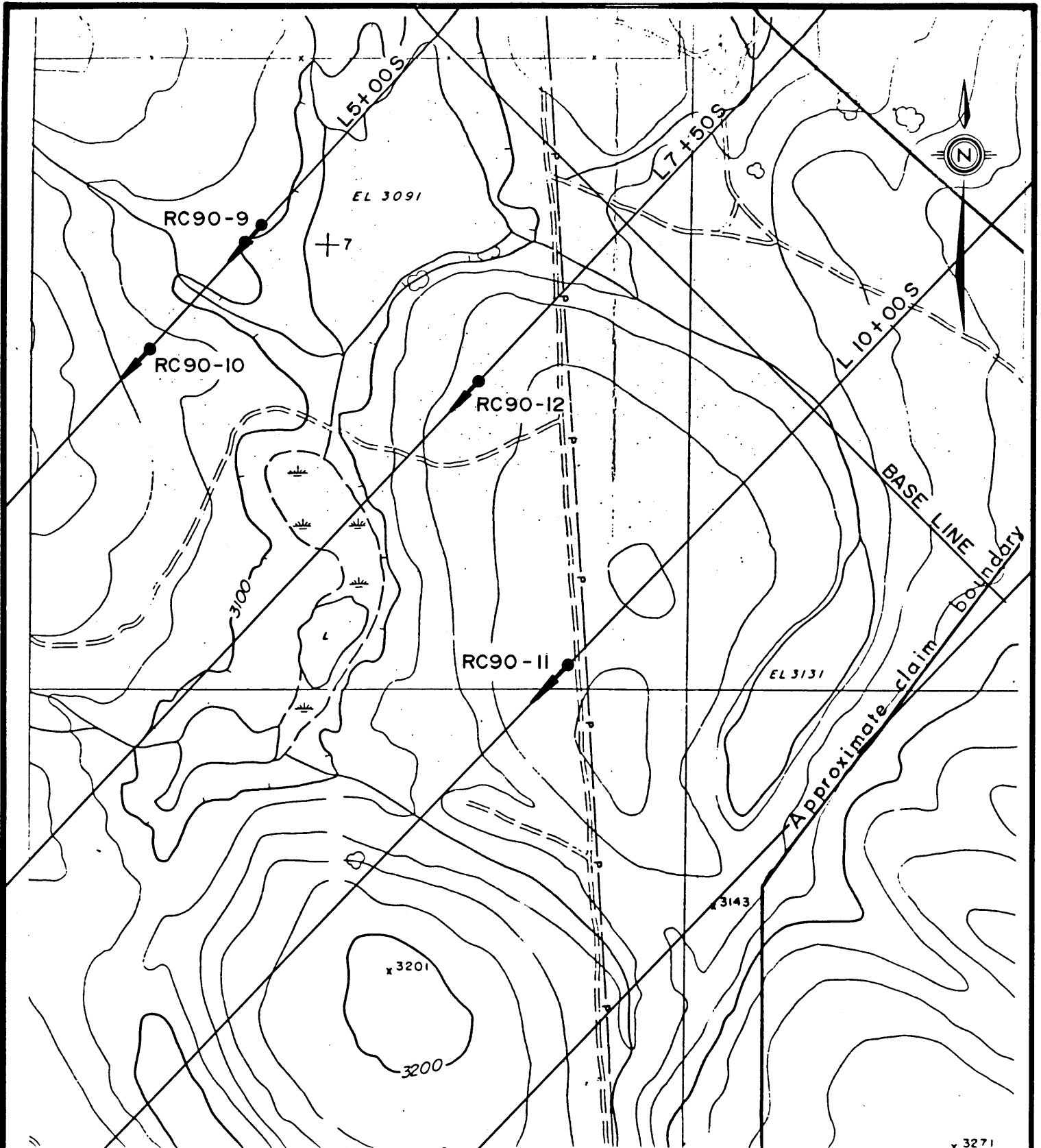
Apart from geological mapping and a detailed ground magnetometer survey carried out by Canadian Superior Exploration in 1977, there is no documentation of significant exploration work having been performed within the area of the Venus 2, Venus 4 and Venus 11 Fr claims prior to 1990. In May, 1990 a Induced Polarization/Resistivity survey completed by Getchell Resources identified a broad, weakly polarizable zone centered about 2.5km northwest of the Ajax deposit. The immediate area of the anomaly is totally concealed by overburden.

## 1990 DRILL PROGRAM

The I.P. target identified by the May, 1990 survey, was tested by four reverse circulation, percussion drill holes over a strike length of about 600 meters.

All drill holes penetrated bedrock and intersected strongly chloritized and locally silicified diorite. In drill holes RC90-9 and RC90-10, the diorite is cut by silicified and veined, Cherry Creek monzonite/syenite dykes.

Pyrite locally is present in the monzonite/syenite dykes but generally absent in the diorite. Abundant disseminated magnetite is present throughout most of the diorite and may be the main source of the I.P. anomaly.



**GETCHELL RESOURCES INC.**

**GALAXY PROJECT**

KAMLOOPS M.D., BRITISH COLUMBIA

**DRILL HOLE LOCATIONS**

DRWG  
3



## CONCLUSIONS AND RECOMMENDATIONS

The 1990 drill program has adequately tested the I.P. anomaly and has determined that the most probable cause of the anomaly is concentrations of magnetite. Further drilling does not appear to be warranted.

Respectfully Submitted,



G.D. Belik, M.Sc.  
December 12, 1990

APPENDIX I

Drill Logs

# G. BELIK & ASSOCIATES LTD.' - PERCUSSION DRILL RECORD

PROPERTY Galaxy

HOLE No. RC90-9

DIP AND AZIMUTH TEST		
Corrected		
Footage	Angle	Azimuth

Core Size 4½" Down Hole Hammer Total Depth 60.96 Meters Sheet No 1 of 2  
 Angle of Hole -55° % Recovery   Logged by G. Belik  
 Claim Venus 11 FR Elev. Collar   Date Begun Nov. 1, 1990  
 Section   Latitude Line 5+00S Date Finished Nov. 2, 1990  
 Bearing 223° Departure 2+45W Core Stored At  

DEPTH	CORE LOST	DESCRIPTION	SAMPLE No.	WIDTH of SAMPLE				
0.00-9.14	M	Overburden; no recovery						
9.14-12.19	M	Cherry Creek monzonite/syenite; cream/pink/light green color, fine grained and highly fractured; silicified sections with thin grey quartz veinlets; 2%-3% py as disseminations and fracture fillings						
12.19-15.24	M	As above; light green color; +3% fine-grained py						
15.24-18.29	M	As above; 1%-2% py						
18.29-21.34	M	Green, fine-grained altered Cherry Creek monzonite/syenite; 50% crumbly, dark hematitic red/brown; probably fault zone						
21.34-24.39	M	Light green + pink Cherry Creek monzonite/syenite; fine-grained biotite present; minor sulphides						
24.39-27.43	M	As above						

G. BELIK & ASSOCIATES LTD. -

PROPERTY Galaxy HOLE No. RC90-9 SHEET No. 2 of 2

DEPTH	CORE LOST	DESCRIPTION	SAMPLE No.	WIDTH of SAMPLE				
27.43-30.48 M		As above						
30.48-33.53 M		As above; light to medium green; hematitic fractures						
33.53-36.58 M		50% Cherry Creek; 50% medium to dark green mafic-rich diorite/gabbro (Iron Mask Intrusives)						
36.58-39.62 M		Medium to dark green diorite; propylitic alteration; no sulphides						
39.62-42.67 M		As above; 40% chloritized mafics; local epidote; local disseminated magnetite						
42.67-45.72 M		As above; abundant disseminated magnetite						
45.72-48.77 M		As above						
48.77-51.82 M		As above						
51.82-54.86 M		As above						
54.86-57.91 M		As above						
57.91-60.96 M		As above						

# G. BELIK & ASSOCIATES LTD. - PERCUSSION DRILL RECORD

PROPERTY Galaxy

HOLE No. RC90-10

DIP AND AZIMUTH TEST		
Corrected		
Footage	Angle	Azimuth

Core Size 4½" Down Hole Hammer    Total Depth 45.72 Meters    Sheet No 1 of 2  
 Angle of Hole -55°    % Recovery      Logged by G. Belik  
 Claim Venus 4    Elev. Collar      Date Begun Nov. 2, 1990  
 Section      Latitude Line 5+00S    Date Finished Nov. 2, 1990  
 Bearing 223°    Departure 3+85W    Core Stored At  

DEPTH	CORE LOST	DESCRIPTION	SAMPLE No.	WIDTH of SAMPLE				
0.00-16.76 M		Overburden						
16.76-18.29 M		Medium to dark green, medium-grained diorite (Iron Mask Intrusives); 40%-50% chloritized mafics; disseminated magnetite; trace py						
18.29-21.34 M		As above						
21.34-24.39 M		As above; 20% light green; 10% pink, hematitic						
24.39-27.43 M		As 16.76-18.29 M; abundant disseminated magnetite; 5% epidote						
27.43-30.48 M		As above						
30.48-33.53 M		As above; 10% fine-grained, pink Cherry Creek monzonite/syenite (dyke) with 2%-4% vein quartz						
33.53-36.58 M		70% Iron Mask diorite 30% Cherry Creek monzonite/syenite						





# G. BELIK & ASSOCIATES LTD.' - PERCUSSION DRILL RECORD

PROPERTY Galaxy

HOLE No. RC90-11

DIP AND AZIMUTH TEST		
Corrected		
Footage	Angle	Azimuth

Core Size 4½" Down Hole Hammer Total Depth 45.72 Meters Sheet No 1 of 2  
 Angle of Hole -55° % Recovery   Logged by G. Belik  
 Claim Venus 2 Elev. Collar   Date Begun Nov. 3, 1990  
 Section   Latitude Line 10+00S Date Finished Nov. 4, 1990  
 Bearing 223° Departure 3+00W Core Stored At  

DEPTH	CORE LOST	DESCRIPTION	SAMPLE No.	WIDTH of SAMPLE	Cu (%)			
0.00-26.21	M	Overburden						
26.21-27.43	M	Medium green, medium-grained diorite; 50% of unit contains abundant fine-grained epidote; disseminated magnetite; muscovite locally evident			.005			
27.43-30.48	M	Mixture of diorite and light green siliceous granular unit (altered diorite); 20% pale green intensely silicified (+90% quartz); + muscovite			.005			
30.48-33.53	M	Similar to above section with 5% vein quartz; trace cpy			.016			
33.53-36.58	M	Dark grey and epidote green, altered diorite; finely disseminated magnetite			.006			
36.58-39.62	M	Dark grey/green and green altered diorite; ep/cl + sericite alteration; abundant finely disseminated magnetite; minor py			.003			



# G. BELIK & ASSOCIATES LTD. - PERCUSSION DRILL RECORD

PROPERTY Galaxy

HOLE No. RC90-12

DIP AND AZIMUTH TEST		
Corrected		
Footage	Angle	Azimuth

Core Size 4½" Down Hole Hammer Total Depth 45.72 Meters Sheet No 1 of 2  
 Angle of Hole -55° % Recovery   Logged by G. Belik  
 Claim Venus 2 Elev. Collar   Date Begun Nov. 4, 1990  
 Section   Latitude Line 7+50S Date Finished Nov. 4, 1990  
 Bearing 223° Departure 2+00W Core Stored At  

DEPTH	CORE LOST	DESCRIPTION	SAMPLE No.	WIDTH of SAMPLE	Cu(%)			
0.00-22.86	M	Overburden						
22.86-24.39	M	Dark green, sheared, diorite; strong chloritic alteration; abundant fine to coarse disseminated magnetite; 2% vein quartz; trace cpy			.014			
24.39-27.43	M	Medium to dark green/grey altered (chlorite + epidote + quartz) diorite; 2% pink to cream colored quartz; py locally evident			.010			
27.43-30.48	M	As above; 10% quartz and pink to red hematitic quartz			.002			
30.48-33.53	M	As 24.39-27.43 M; epidote-rich sections; 5% cream & pink quartz; abundant disseminated magnetite			.002			
33.53-36.58	M	85% medium to dark green/grey chloritized and silicified diorite; 15% cream to pink quartz; abundant magnetite; shearing evident			.013			
36.58-39.62	M	70% medium to dark green chloritic diorite			.005			



APPENDIX II

Assay Certificate

**KAMLOOPS  
RESEARCH & ASSAY  
LABORATORY LTD.**

**B.C. CERTIFIED ASSAYERS**

912 - 1 LAVAL CRESCENT, KAMLOOPS, B.C. V2C 5P5 PHONE (604) 372-2784 FAX 372-1112

**\*\* ASSAY CERTIFICATE \*\***



**To:** Getchell Resources  
740-175 2nd. Ave.,  
Kamloops, B.C.  
V2C 5W1

**Number:** K 10283

**Date:** Nov. 7, 1990

**Proj.:**

**Attn:**

No.	Description	Cu percent
1	RC 90-11 86-90	.005
2	90-100	.005
3	100-110	.016
4	110-120	.006
5	120-130	.003
6	130-140	.005
7	140-150	.002
8	RC 90-12 75-80	.014
9	80-90	.010
10	90-100	.002
11	100-110	.002
12	110-120	.013
13	120-130	.005
14	130-140	.004
15	140-150	.002

*David A. Simard*

B.C. Certified Assayer

APPENDIX III

Statement of Expenditures

Statement of Expenditures

Galaxy (Peripheral) Drilling Program, 1990

1) Labour:

G. Belik, M.Sc.  
-drill supervision, log drill  
cuttings  
-4.0 days @ \$350/day \$1,400.00

2) Drilling Costs:

a) mobilization & demobilization \$ 372.50  
b) 650 feet @ \$11.50/foot 7,475.00 7,847.50

3) Assays:

-15 copper assays, sample prep. 142.50

4) Sample bags and field supplies  
consumed 50.00

5) Report Preparation:

-professional fees, secretarial,  
xerox, binding 400.00

Total \$9,840.00



APPENDIX IV

Statement of Qualifications

G.D. Belik

**GARY D. BELIK, M.Sc.**

Consulting Geologist  
Mineral Exploration

#6 NICOLA PLACE, 310 NICOLA STREET • KAMLOOPS, B.C. V2C 2P5 • PHONE (604) 374-4247

CERTIFICATE

I, GARY D. BELIK, OF THE CITY OF KAMLOOPS, BRITISH COLUMBIA,  
DO HEREBY CERTIFY THAT:

- (1). I am a member of the Canadian Institute of Mining and Metallurgy and a fellow of the Geological Association of Canada.
- (2). I am employed by G. Belik and Associates Ltd. with my office at 664 Sunvalley Drive, Kamloops, B. C.
- (3). I am a graduate of the University of British Columbia with a B.Sc. in Honors Geology and a M.Sc. in Geology.
- (4). I have practised continuously as a geologist since May, 1970.
- (5). This report is based on results of work carried out on the Galaxy Property, under my direct supervision during November 1, 1990 to November 4, 1990.



Gary D. Belik, M.Sc.  
GEOLOGIST

KAMLOOPS, B. C.  
December 12, 1990