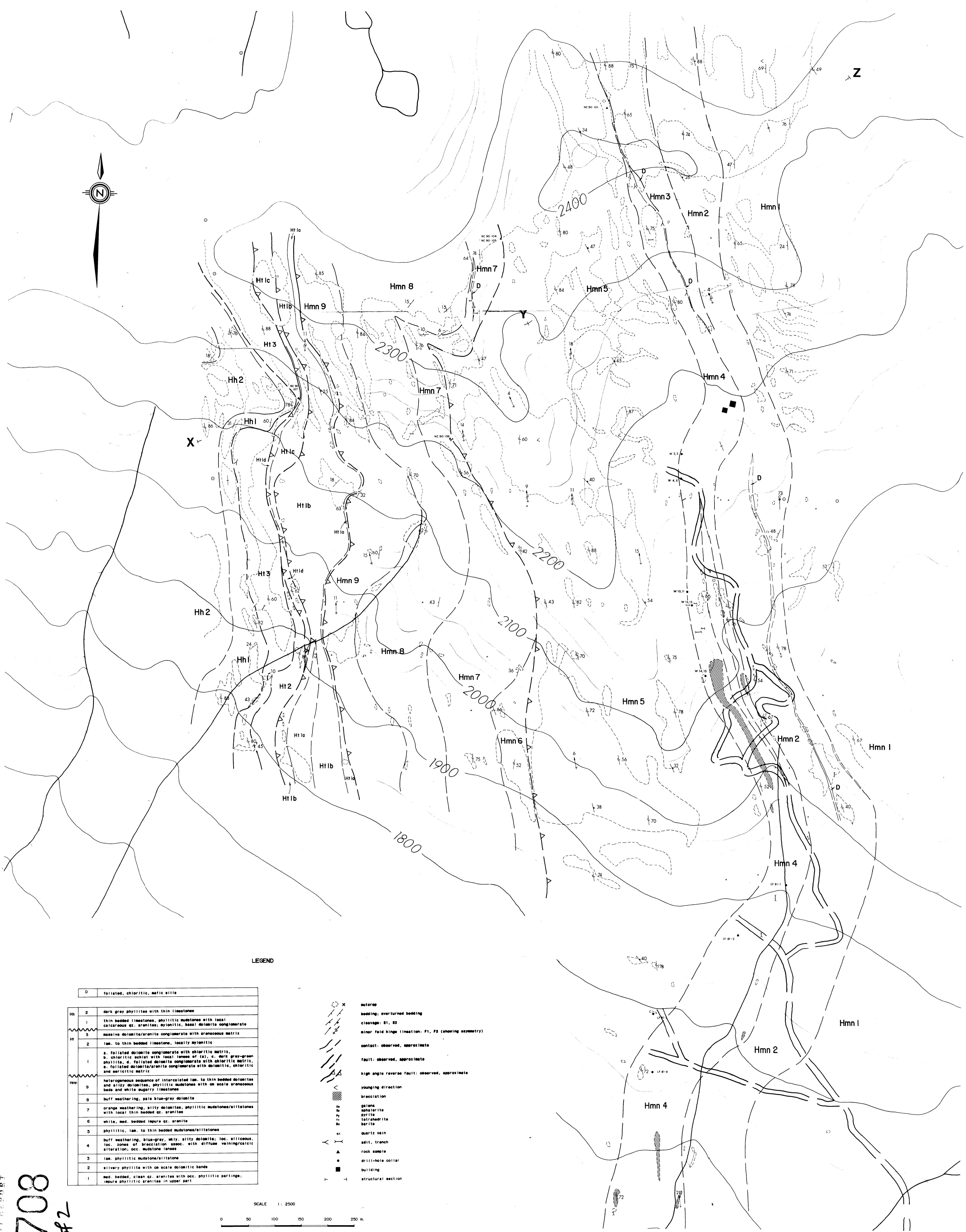
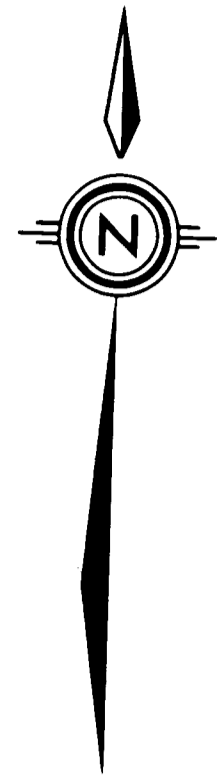


LEGEND

- CRETACEOUS
 - KT white, medium grained leucotonalite
 - MIOCENE
 - Horvath Fm.
 - Hht 2 white to pinkish gray, med. bedded quartz granite
 - Hht 1 phyllitic mudstone with minor siltstone, minor lam. limestones and quartz granite locally at base
 - Toby Fm.
 - Ht strongly foliated dolomite/arenite conglomerate with chloritic (?) volcanic to sandy dolomitic matrix; include calcite schists (lime-vein, quartz) and minor phyllite
 - HELIXIAN
 - Mount Nelson Fm.
 - Hmn 3 buff to orange weathering silty dolomite with minor phyllite and siltstone; impure arenite unit at base
 - Hmn 2 silty phyllite (locally dolomitic at base of unit), dk. grayish lam. mudstone/siltstone; 2x, buff weathering, blue-gray, silty dolomite
 - Hmn 1 thin to med. bedded, clean quartz arenite with silty phyllitic partings
 - Dutch Creek Fm.
 - Hdc 2 pale gray to buff, thin bedded to laminated, impure phyllitic siltstone, mudstone and quartz arenite
 - Hdc 1 red-orange weathering, dk. silty-gray phyllite with local well laminated mudstone and siltstone
 - Kitchner Fm.
 - Hk 4 thin to med. bedded, impure quartz arenite, siltstone, minor phyllitic mudstone; dk. lam. to thin bedded phyllite and silty dolomite
 - Hk 3 buff-orange, waxy weathering, gray silty dolomite with thin dolomitic siltstone beds
 - Hk 2 reddish weathering, lam. phyllitic mudstone/siltstone
 - Hk 1 reddish weathering, silty phyllite with local silty dolomite lenses; dk. silty dolomite
 - Creston Fm.
 - Hc white, med. to thick bedded quartz arenite, minor phyllite
-
- geological contact: observed, approx., assumed
 - bedding, vertical, overturned
 - second cleavage (S2)
 - F2 syncline, F2 anticline axial surface trace (tick shows dip of axial surface)
 - high angle reverse fault
 - bedding/cleavage (S2) intersection lineation
 - F2 minor fold axis
 - rock sample
 - diamond drill hole
 - well

GEOLOGICAL BRANCH
 ASSESSMENT REPORT
 20,708
 Part 2 of 2

| | | | |
|-------------------------------|----------|-------------|----------|
| Drawn by NC, VE | | Traced by | |
| Checked by | Date | Reviewed by | Date |
| | | | |
| WALL-DAVE PROPERTY GEOLOGY | | | |
| Scale | 1:10,000 | Date | 10/90 |
| | | | Plate |
| | | | FIGURE 4 |



LEGEND

| | |
|----|---|
| D | foliated, chloritic, mafic gneiss |
| Hh | 2 dark gray phyllites with thin limestones |
| | 1 thin bedded limestones, phyllitic mudstones with local calcareous az. arenites, mylonitic, basal dolomite conglomerate |
| Hh | 3 massive dolomite/arenite conglomerate with arenaceous matrix |
| | 2 lam. to thin bedded limestone, locally mylonitic |
| | a. foliated dolomite conglomerate with chloritic matrix. |
| | b. chloritic schist with local lenses of (a), c. dark gray-green phyllites, d. foliated dolomite conglomerate with chloritic matrix. |
| | e. foliated dolomite/arenite conglomerate with dolomitic, chloritic and sericitic matrix |
| Hm | 9 heterogeneous sequence of intercalated lam. to thin bedded dolomites and silty dolomites, phyllitic mudstones with occasional arenaceous beds and white sugary limestones |
| | 8 buff weathering, pale blue-gray dolomite |
| | 7 orange weathering, silty dolomites, phyllitic mudstones/siltstones with local thin bedded az. arenites |
| | 6 white, med. bedded impure az. arenites |
| | 5 phyllitic, lam. to thin bedded mudstones/siltstones |
| | 4 buff weathering, blue-gray, wavy, silty dolomite; loc. siliceous, loc. zones of bracciation assoc. with diffuse veining/calcic alteration; occ. mudstone lenses |
| | 3 lam. phyllitic mudstone/siltstone |
| | 2 silvery phyllites with occasional dolomitic bands |
| | 1 med. bedded, clean az. arenites with occ. phyllitic partings; impure phyllitic arenites in upper part |

- outcrop
- bedding; overturned bedding
- cleavage: S1, S2
- minor fold hinge lineation: F1, F2 (showing asymmetry)
- contact: observed, approximate
- fault: observed, approximate
- high angle reverse fault: observed, approximate
- younging direction
- bracciation
- gneiss
- amphibolite
- pyrite
- tetrahedrite
- barite
- quartz vein
- adit, trench
- rock sample
- drill-hole collar
- building
- structural section

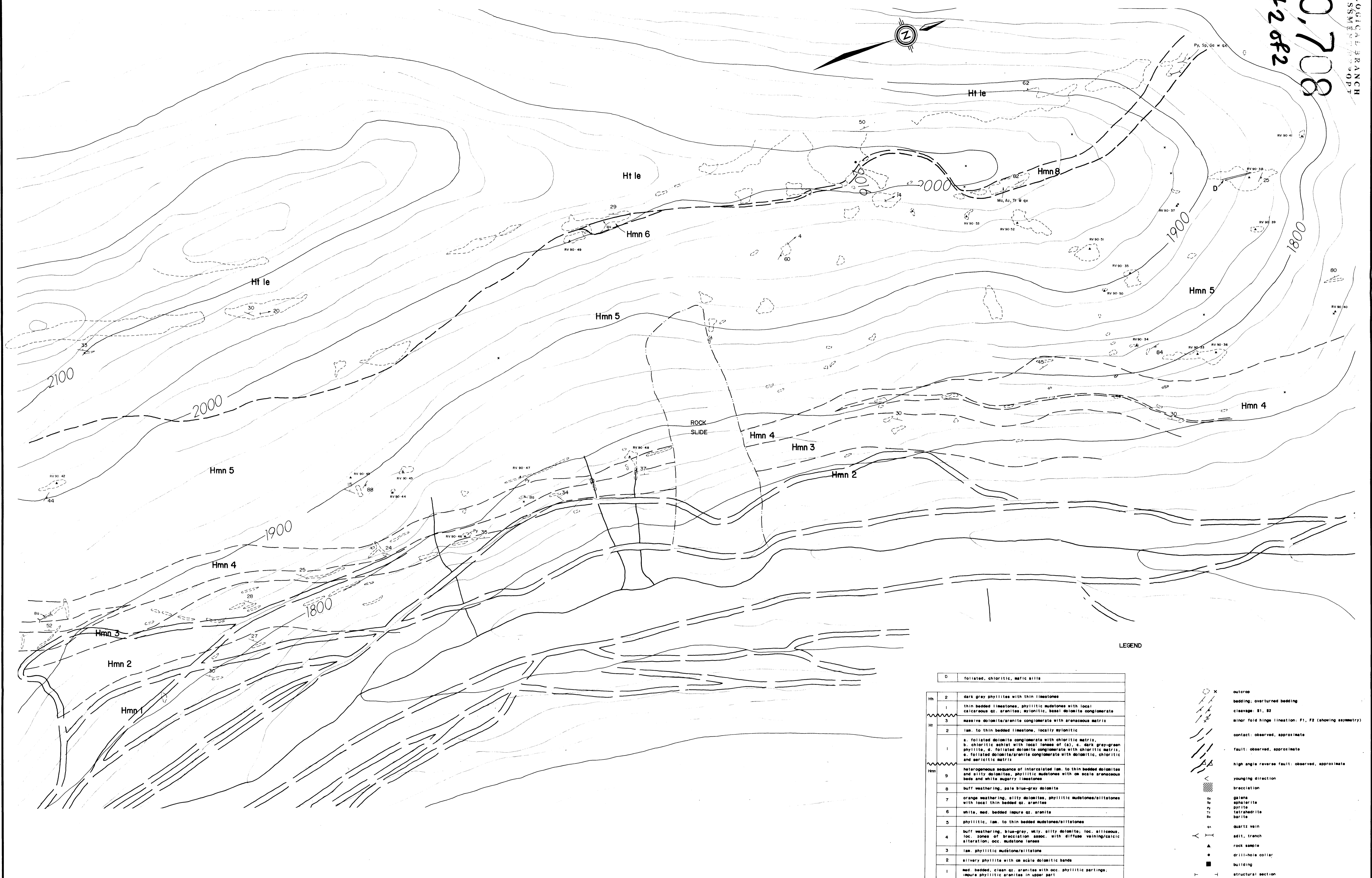
SCALE 1:2500
0 50 100 150 200 250 m

CAROLINA BRANCH
 ASSESSMENT REPORT
 20,708
 part 2 of 2

| | | | |
|--------------------------|---------|------------|----------|
| Drawn by | NC, RVE | Traced by | |
| Revised by | | Revised by | |
| Date | | Date | |
| WALL PROPERTY GEOLOGY | | | |
| Scale | 1:2500 | Date | 10/90 |
| | | Plate | FIGURE 5 |

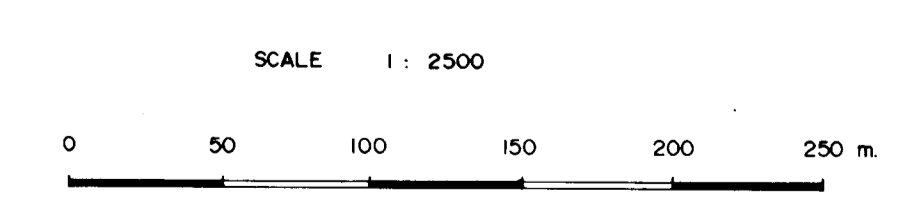
20,708
Part 2 of 2

LOGICAL BRANCH
GEOLOGICAL BRANCH
GEOLOGICAL BRANCH



| LEGEND | |
|--------|---|
| D | foliated, chloritic, mafic sills |
| Ht | 2 dark gray phyllites with thin limestones |
| | 1 thin bedded limestones, phyllitic mudstones with local calcareous ss. arenites, mylonitic, basal dolomite conglomerate |
| Hm | 3 massive dolomite/arenite conglomerate with arenaceous matrix |
| | 2 lam. to thin bedded limestone, locally mylonitic |
| | a. foliated dolomite conglomerate with chloritic matrix, b. chloritic schist with local lenses of (a), c. dark gray-green phyllite, d. foliated dolomite conglomerate with chloritic matrix, e. foliated dolomite/arenite conglomerate with dolomitic, chloritic and sericitic matrix |
| Hm | 9 heterogeneous sequence of intercalated lam. to thin bedded dolomites and silty dolomites, phyllitic mudstones with calc arenaceous beds and white sugary limestones |
| | 8 buff weathering, pale blue-gray dolomite |
| | 7 orange weathering, silty dolomites, phyllitic mudstones/siltstones with local thin bedded ss. arenites |
| | 6 white, med. bedded lapours of arenite |
| | 5 phyllitic, lam. to thin bedded mudstones/siltstones |
| | 4 buff weathering, blue-gray, silty, silty dolomite; loc. siliceous; loc. zones of bracciation assoc. with diffuse veining/calcic alteration; occ. mudstone lenses |
| | 3 lam. phyllitic mudstone/siltstone |
| | 2 silvery phyllite with calc arenite bands |
| | 1 med. bedded, clean ss. arenites with occ. phyllitic partings; impure phyllitic arenites in upper part |

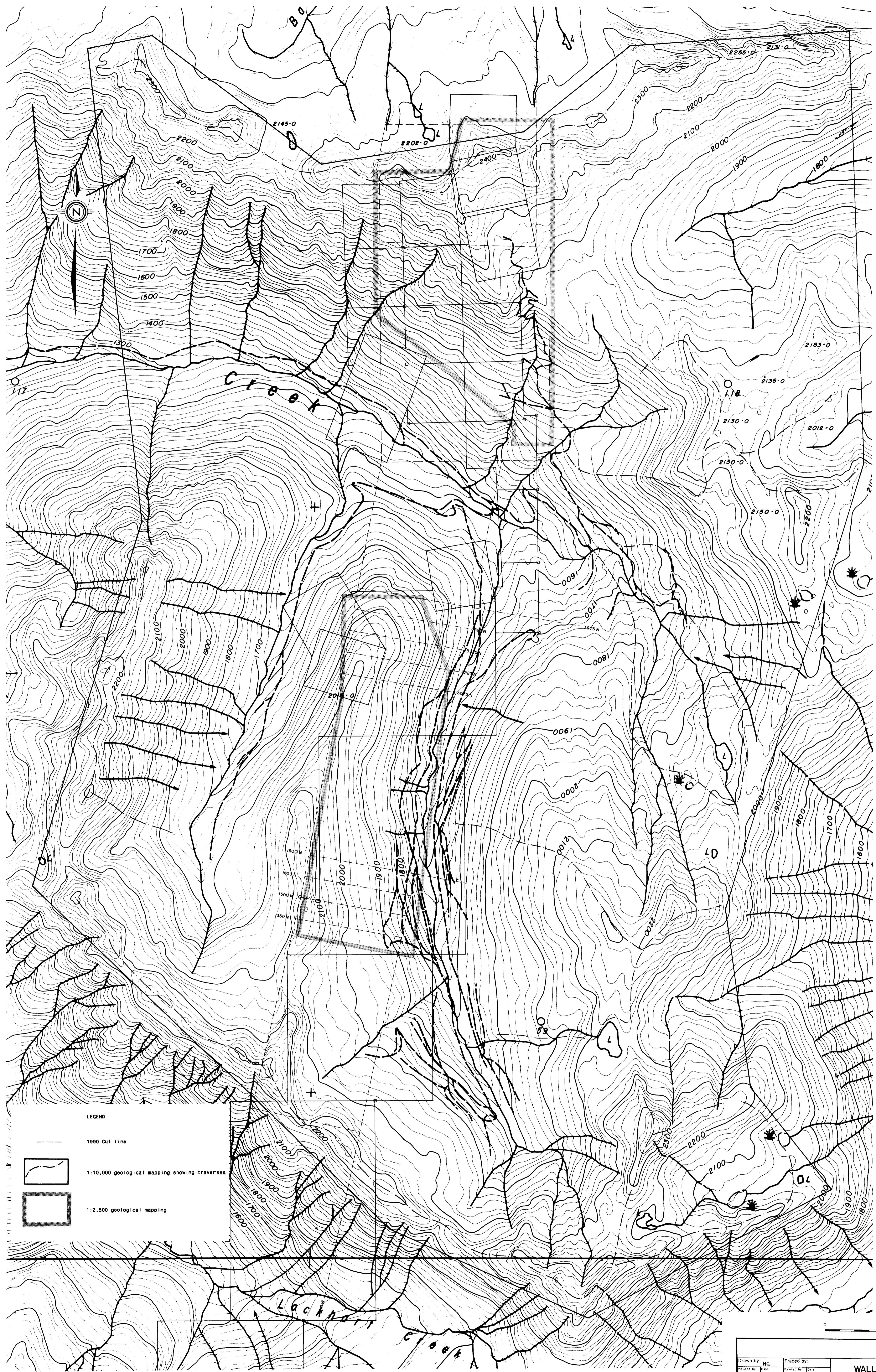
- outcrop
- bedding; overturned bedding
- cleavage: S1, S2
- minor fold hinge lineation: F1, F2 (showing asymmetry)
- contact: observed, approximate
- fault: observed, approximate
- high angle reverse fault: observed, approximate
- younging direction
- bracciation
- garnet
- apatite
- pyrite
- tetradrite
- barite
- quartz vein
- edit, trench
- rock sample
- drill-hole collar
- building
- structural section



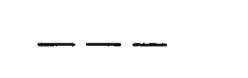


| | | | |
|------------|---------|------------|--|
| Drawn by | NC, RvE | Traced by | |
| Revised by | | Revised by | |
| Date | | Date | |
| | | | |
| | | | |

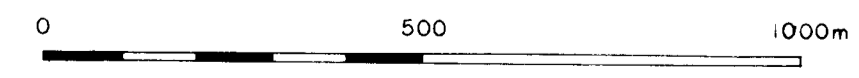
DAVE PROPERTY
GEOLOGY

Scale 1: 2,500 Date 10/90 Plate FIGURE 6



LEGEND

-  1990 Cut line
-  1:10,000 geological mapping showing traverses
-  1:2,500 geological mapping



| | | | |
|------------|----------|------------|----------------|
| Drawn by | MC | Traced by | |
| Revised by | DMC | Revised by | DMC |
| | | | |
| | | | |
| | | | |
| | | | |
| Scale | 1:10,000 | Date | 10/90 |
| | | | Plate FIGURE 3 |

WALL DAVE PROPERTY
Claim map showing line cutting,
geochem grids and mapping

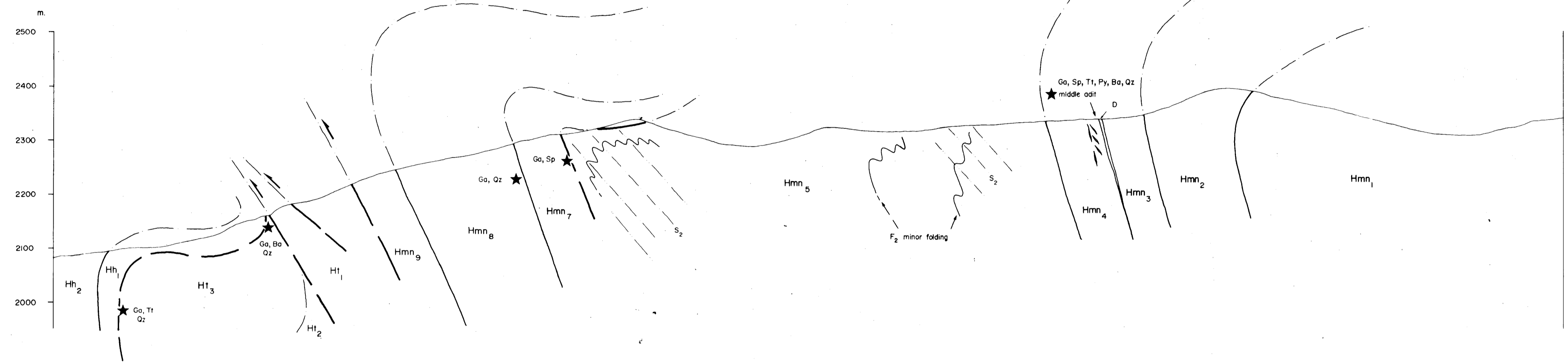
20,708

Part 2 of 2

Z

Y

X

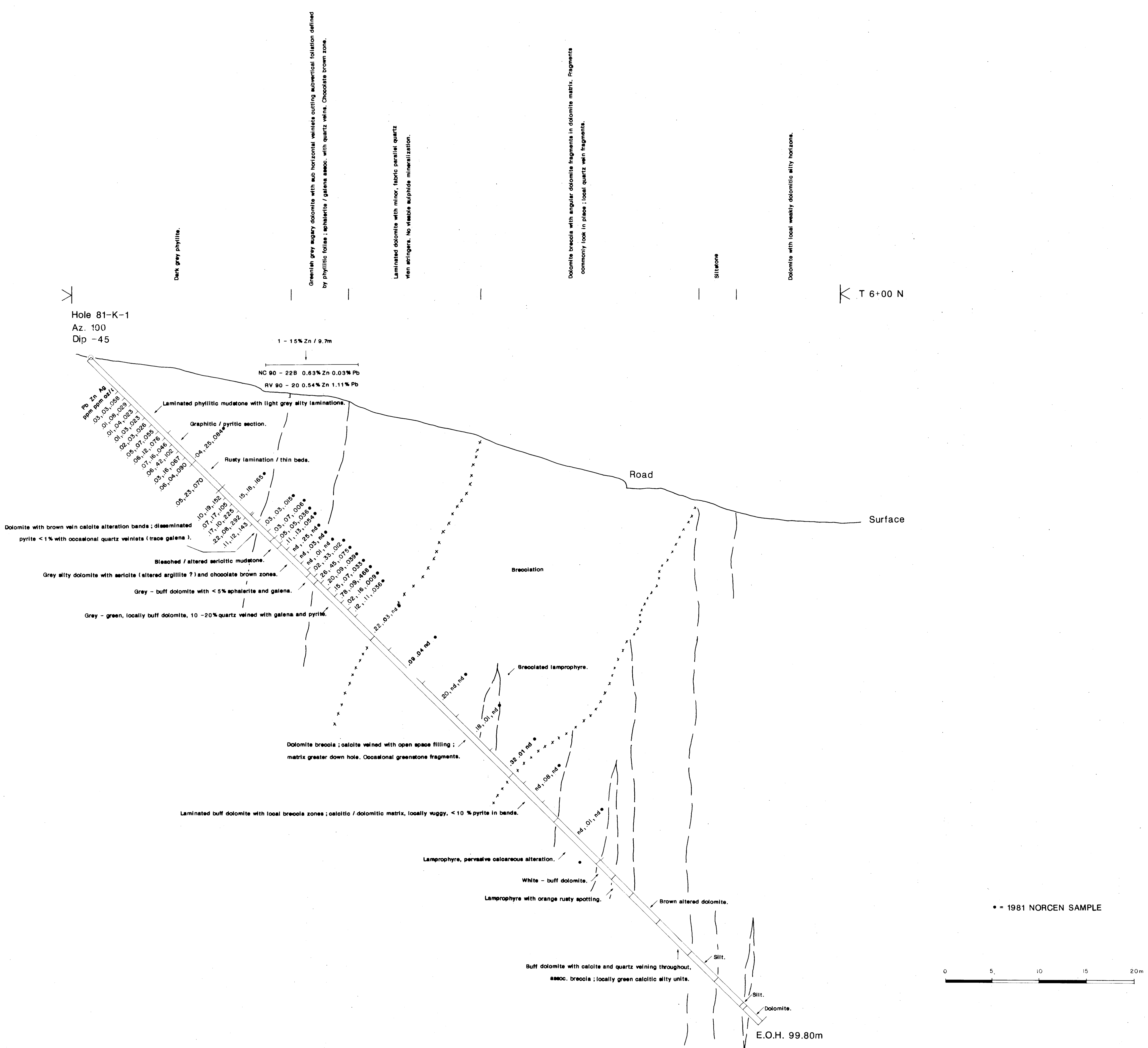


★ mineralization



| | | | | |
|---------------|------|------------|------|--|
| Drawn by: NJC | | Traced by: | | WALL PROPERTY GEOLOGICAL SECTION X-Y-Z |
| Revised by | Date | Revised by | Date | |
| | | | | Scale: 1:2500 |
| | | | | Date: 10/90 |
| | | | | Plate: FIGURE 7 |

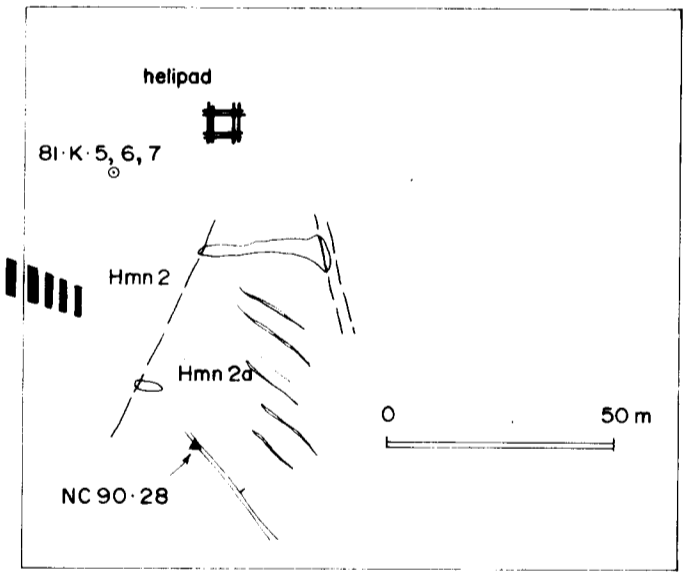
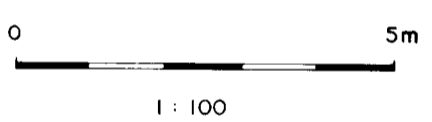
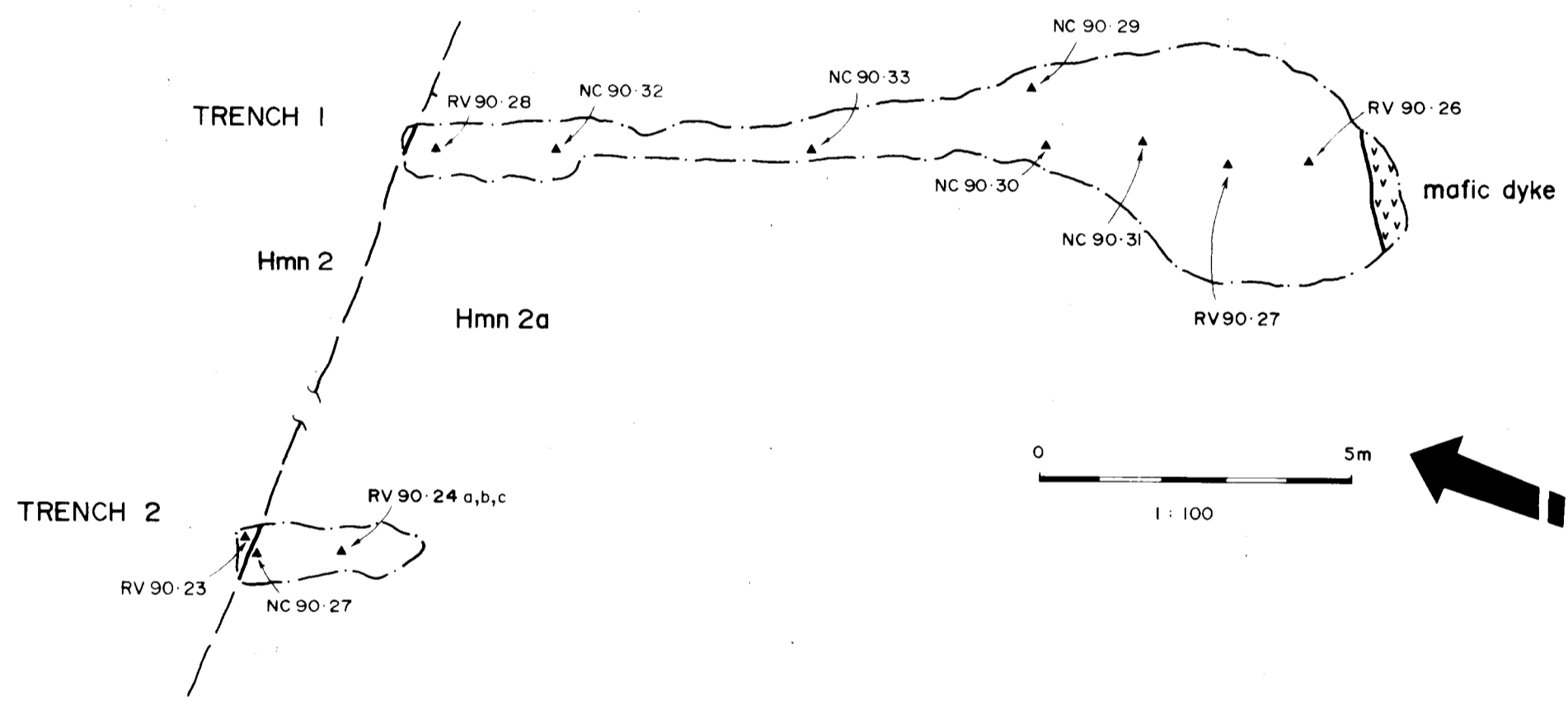
Part 2 of 2



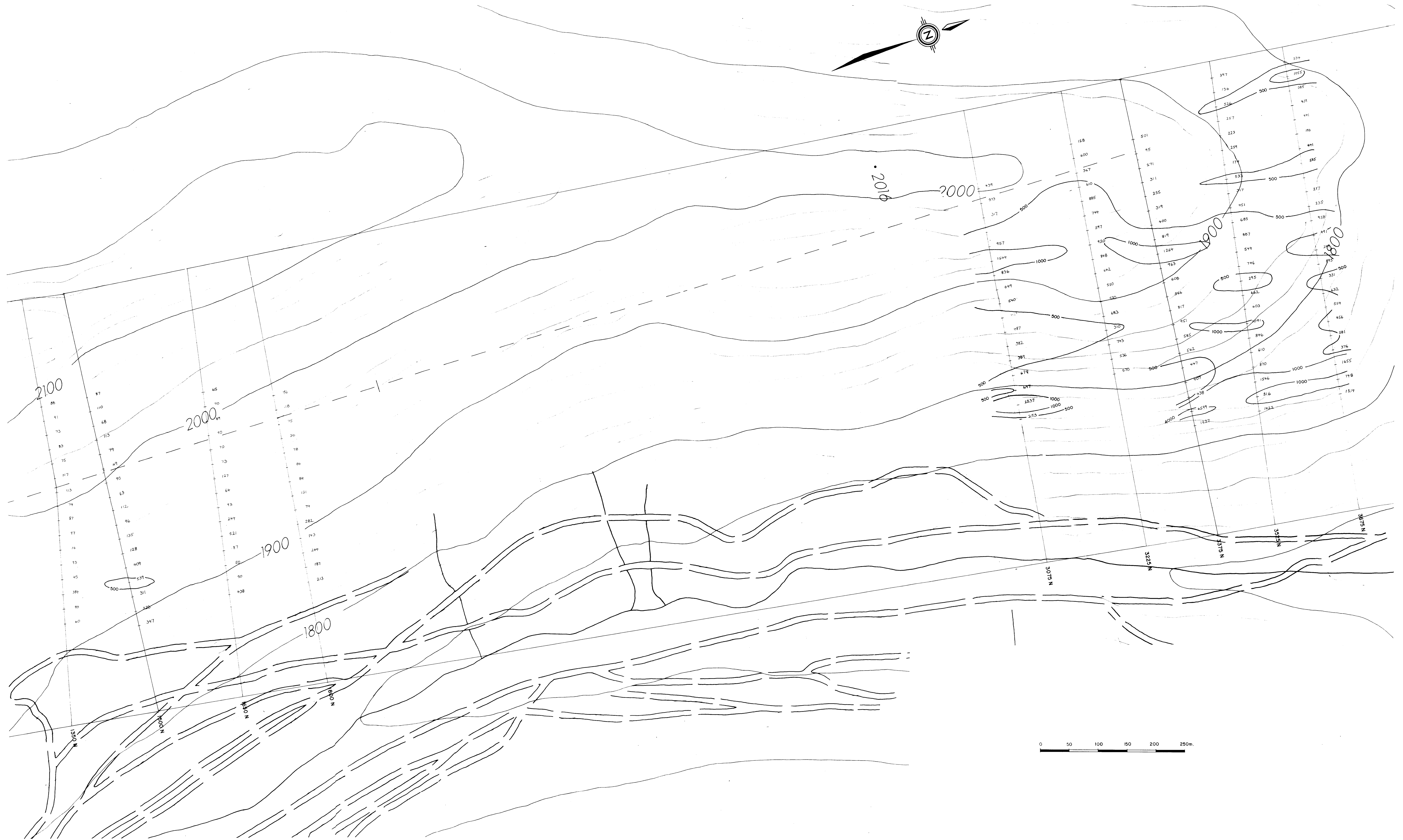
| | | | |
|--|-------------|------------------|------|
| Drawn by N.C. | | Traced by | |
| Revised by | Date | Revised by | Date |
| | | | |
| DAVE GROUP | | | |
| DDH 81-K-1 and TRENCH 6+00 N CROSS SECTION (Az. 100, LOOKING NE.) | | | |
| Scale: 1:200 | Date: 10/90 | Plate: FIGURE 12 | |

ECOLOGICAL BRANCH
ASSESSMENT

20,7
part 2 of 2



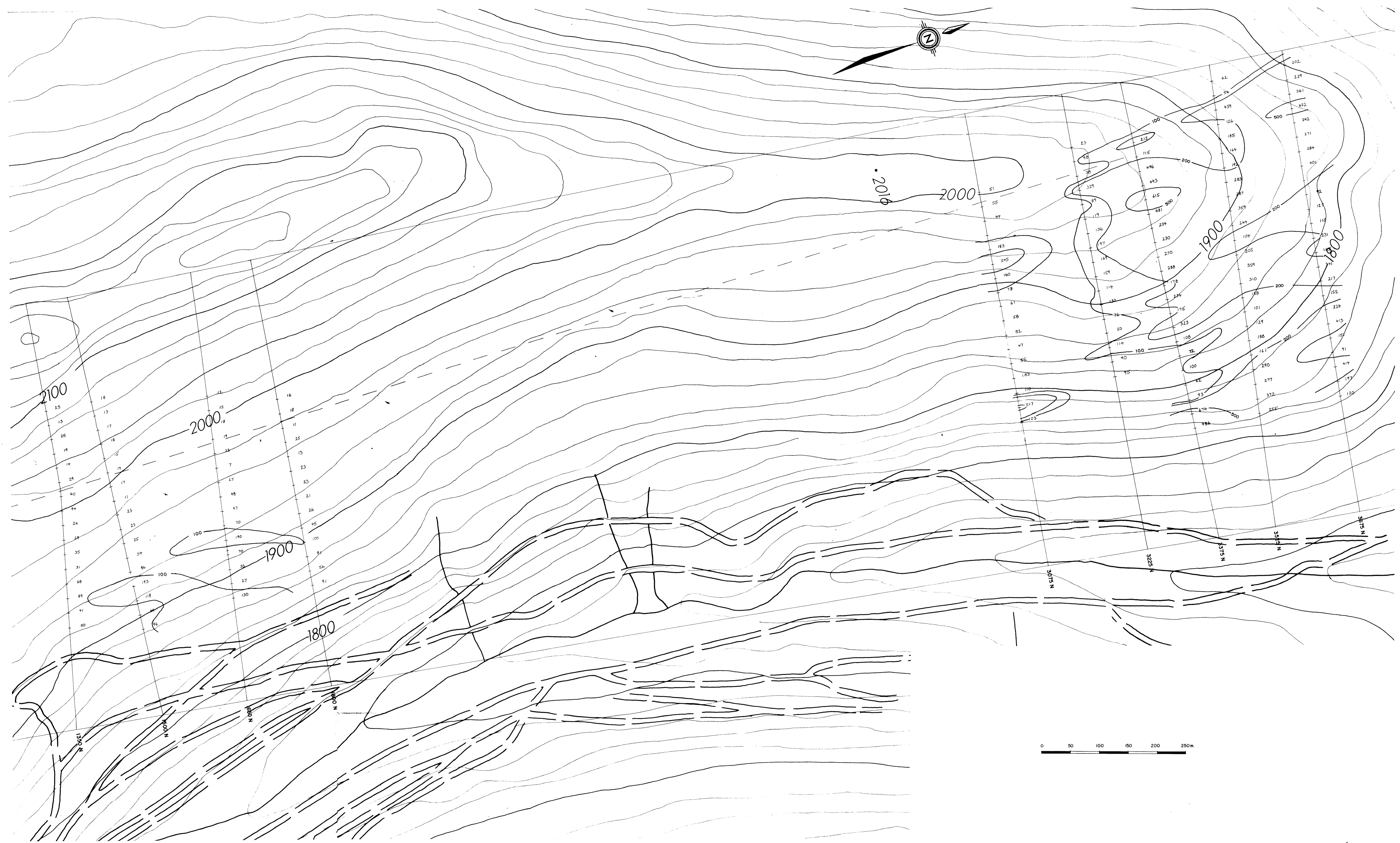
| | | | |
|----------------------|------|---------------------|------------------|
| | | | |
| Drawn by: NJC | | Traced by: NJC | |
| Revised by | Date | Revised by | Date |
| | | | |
| | | | |
| | | | |
| LOCKHART AREA (DAVE) | | SAMPLE LOCATION MAP | |
| Scale: 1:100 | | Date: 10/90 | Plate: FIGURE 11 |



GEOLOGICAL DIVISION
 ASSESSMENT SECTION
 20, 2010
 Part 2 of 2

| | | | |
|---------------|----|-------------|-----------------|
| Drawn by | NC | Traced by | |
| Revised by | | Revised by | |
| | | | |
| | | | |
| | | | |
| | | | |
| Scale: 1:2500 | | Date: 10/90 | Plate: FIGURE 9 |

DAVE PROPERTY
 SOIL GEOCHEMISTRY - Zn, ppm



GEOLOGICAL ENGINEERING
 ASSESSMENT REPORT
 20, 700
 P07 2012

| | | | |
|------------|--------|------------|-------|
| Drawn by | NC | Traced by | |
| Revised by | | Revised by | |
| | | | |
| | | | |
| | | | |
| Scale | 1:2500 | Date | 10/90 |
| Plate | | FIGURE | 10 |



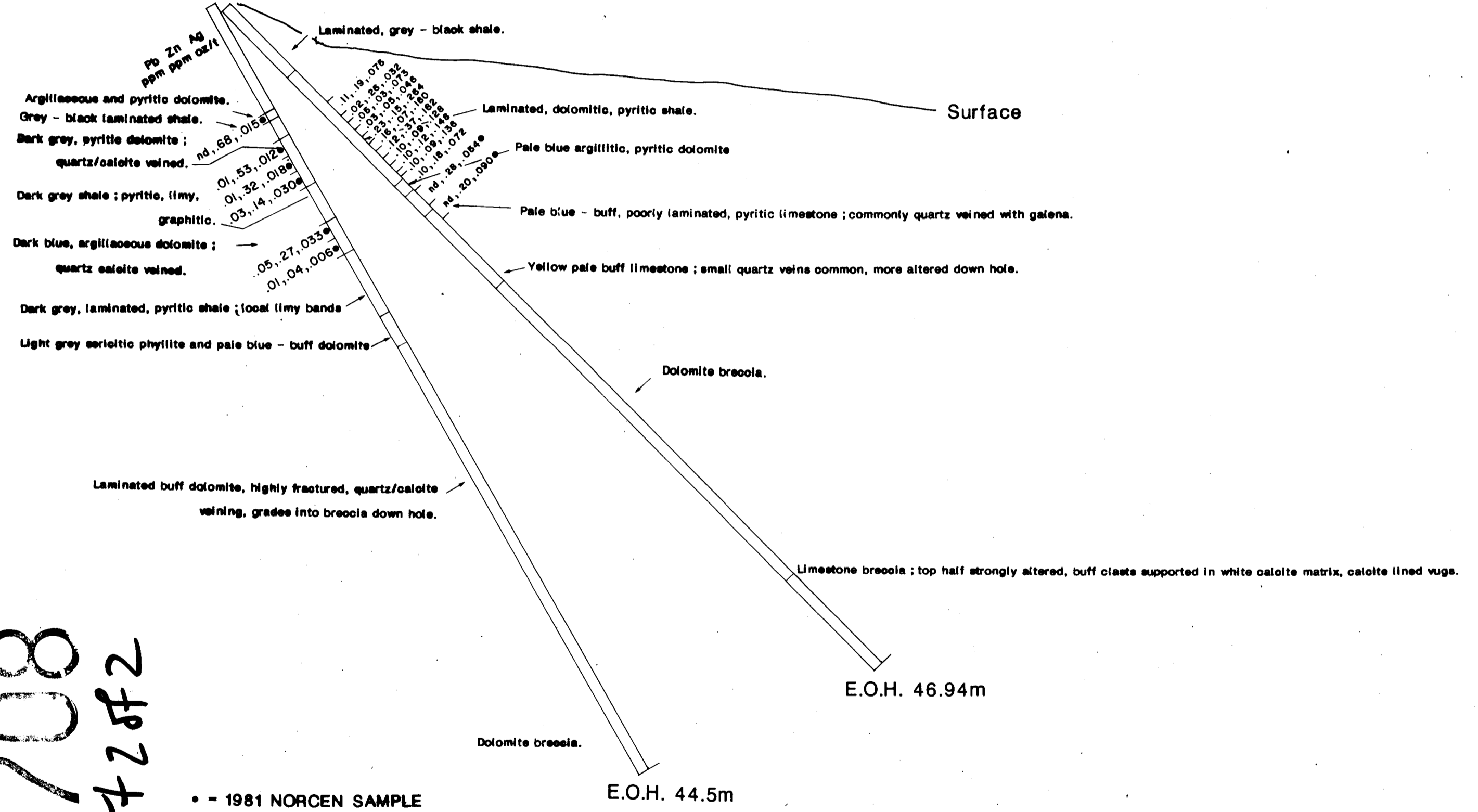
GEOLOGICAL BRANCH
 ASSESSMENT REPORT
 20,708
 Part 2 of 2

| | | | |
|------------|--------|-------------|----------|
| Drawn by | NC | Traced by | |
| Checked by | DAE | Reviewed by | DAE |
| | | | |
| | | | |
| Scale | 1:2500 | Date | 10/90 |
| | | Plate | FIGURE 8 |

20,708

part 2 of 2

Hole 81-K-3
Hole 81-K-4 Az. 100
Az. 100 Dip -45
Dip -60



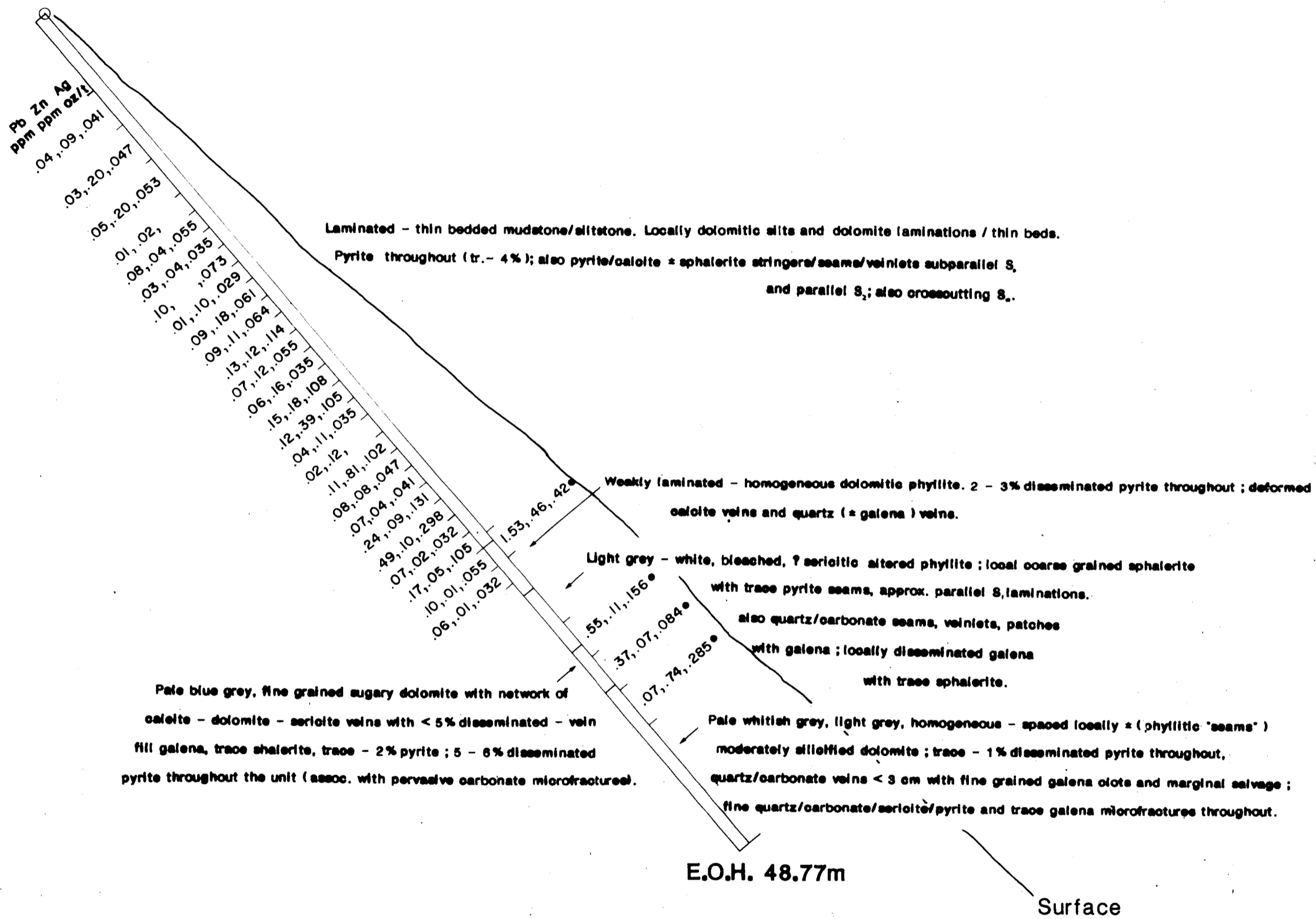
| | | | |
|---|------|-----------------------|------------------|
| | | | |
| Drawn by: | | Traced by: | |
| Revised by | Date | Revised by | Date |
| | | | |
| | | | |
| | | | |
| | | | |
| DAVE GROUP | | DDH's 81-K-3,4 | |
| CROSS SECTION (Az. 100, LOOKING NE.) | | | |
| Scale: 1:200 | | Date: 10/90 | Plate: FIGURE 13 |

Part 2 of 2

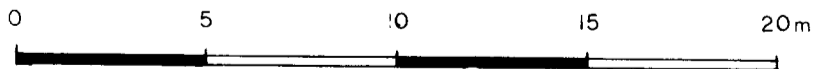
GEOLOGICAL BRANCH
ASSESSMENT REPORT


20,708

Hole 81-K-7
Az. 165
Dip -49



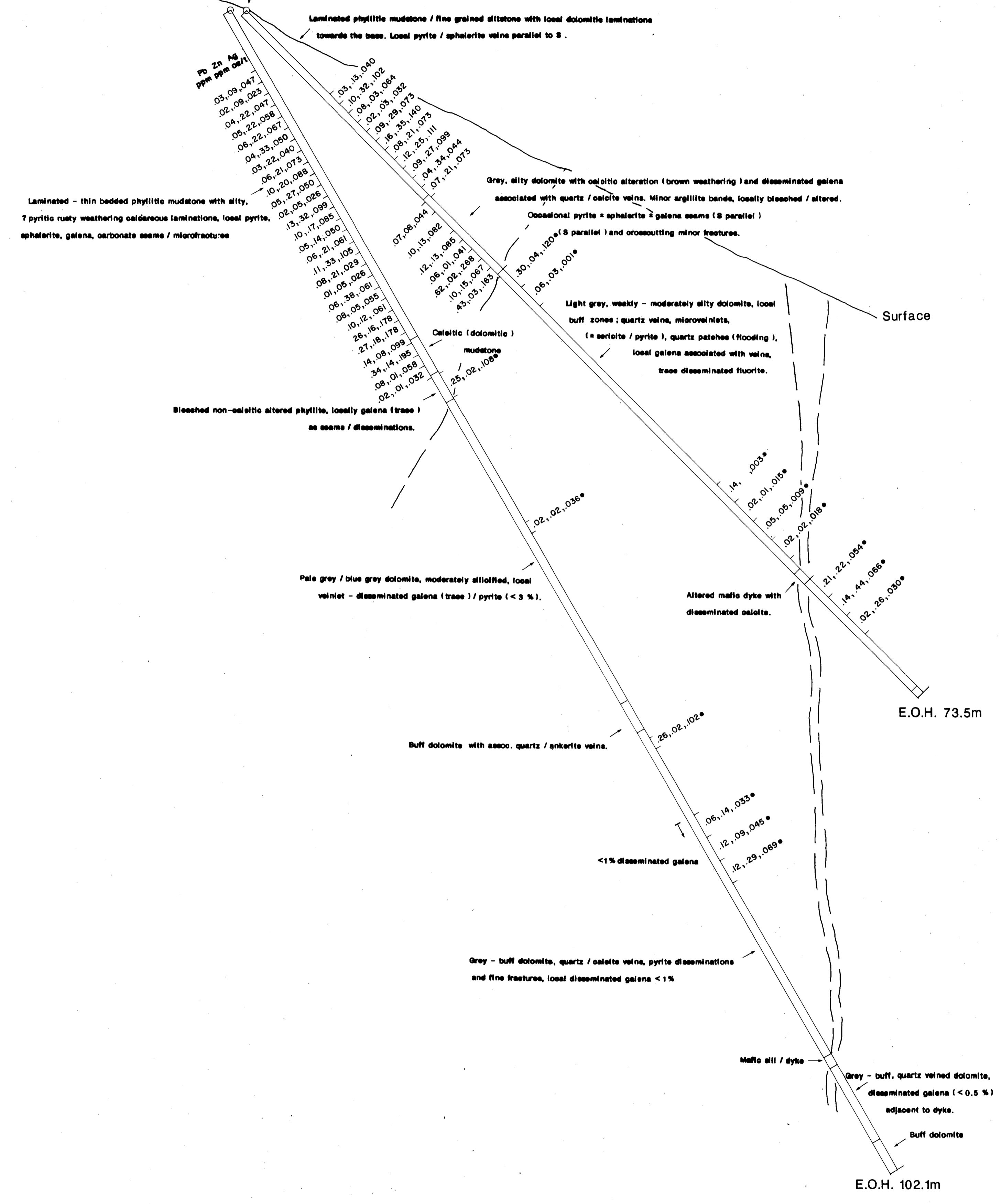
• - 1981 NORCEN SAMPLE



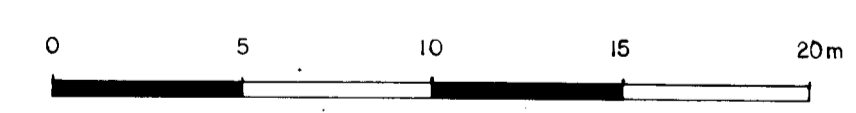
| | | | |
|--|------|-------------|------|
|  | | | |
| Drawn by: NJC | | Traced by: | |
| Revised by | Date | Revised by | Date |
| | | | |
| | | | |
| | | | |
| DAVE GROUP (LOCKHART AREA) DDH 81-K-7 CROSS SECTION (Az. 165, LOOKING EAST) | | | |
| Scale: 1:200 | | Date: 10/90 | |
| Plate: FIGURE 15 | | | |

Hole 81-K-6
Az. 120
Dip - 60

Hole 81-K-5
Az. 120
Dip - 45



* - 1981 NORCEN SAMPLE



| | | |
|------------------|------------------|---|
| Drawn by: NJC | Traced by: | DAVE GROUP (LOCKHART AREA) DDH's 81-K-5,6 CROSS SECTION (Az. 120, LOOKING NE.) |
| Revised by: Date | Revised by: Date | |
| | | Scale: 1:200 |
| | | Date: 10/90 |
| | | Plate: FIGURE 14 |