

KOKANEE EXPLORATIONS LTD

LOG NO: 01-04 RD.

ACTION:

FILE NO:

REPORT ON A GEOLOGICAL MAPPING AND PROSPECTING PROGRAM

LOOK PROPERTY

LOOK 1 - 31, 36 - 43 CLAIMS

FORT STEELE MINING DIVISION

CRANBROOK AREA

N.T.S. 82G/5W + 4E

LAT: 49°15'N

LONG: 115°45'W

OWNER

KOKANEE EXPLORATIONS LTD.

Suite 104, 135 - 10th Avenue South
Cranbrook, B.C.
VIC 2N1

Work Performed from September 17, 1989 to October 5, 1990

Report by: L. Stephenson
Submitted: December, 1990

**GEOLOGICAL BRANCH
ASSESSMENT REPORT**

20,753

TABLE OF CONTENTS

| | | PAGE |
|------|--|-----------|
| 1.00 | Introduction | 1 |
| 2.00 | Location and Access. | 1 |
| 3.00 | Geological Mapping and Prospecting | 1 |
| 4.00 | Conclusions. | 2 |
| | Appendix I - Trench Grab Sample Assays | 3 |
| | Exhibit "A" - Statement of Expenditures. | 4 |
| | Affidavit | 5 |
| | Author's Qualifications. | 6 |
| | Location Map | 7 |
| | Plate 1 - Geology Map | In Pocket |

KOKANEE EXPLORATIONS LTD.

REPORT ON A GEOLOGICAL MAPPING AND PROSPECTING PROGRAM

LOOK 1 - 31, 36 - 43 CLAIMS

FORT STEELE MINING DIVISION

L. Stephenson

December, 1990

1.00 Introduction

Kokanee Exploration Ltd. acquired the Look claims in 1989 and undertook to evaluate and locate the projected trend of the St. Eugene Mine structure on the property.

Geological prospecting and mapping was completed to trace the extension of the St. Eugene Mine structure onto the Look claims and to investigate the exposures of the structure in the old showings on the property.

2.00 Location and Access

The Look claims are located east southeast of the town of Moyie, B.C. Access is provided to the claims via the natural gas pipeline maintenance road.

3.00 Geological Mapping and Prospecting

Geological mapping and prospecting traverses were run across the property perpendicular to the trend of the zones projected extent of the zone.

Visible mineralization was identified in the gossan zone. Siltstones and argillite rocks of the Creston and Upper Creston formations were identified in outcrops through the area.

The geology of the claims was mapped in detail in the areas of outcrop (Plate 1). Rocks of the lower and upper Creston intruded by gabbro dykes were observed to underlay most of the property. The Creston rocks consisted mainly of argillite-argillaceous quartzites with a few large quartzite units. The units were striking northsouth with a gentle easterly dip (between 15-25°).

There appears to be a slight anticlinal warp to the units with the axis centred on the centre line of the property. The gossan zone trace appears to parallel this anticlinal axis with an eastwest strike. This trend is slightly off the St. Eugene Society Girl trend (east southeast) but the zone nevertheless parallels the eastwest trend found at the St. Eugene Mine proper.

Two northsouth fault traces were mapped on the property with apparent left lateral movement. These faults are located west of the showing.

Samples of gossan show some traces of base metal (up to 2% lead and silver) associated with the manganese rich gossan zone (Appendix II).

4.00 Conclusions

The Look property hosts a gossan vein that is the projected extension of the St. Eugene trend where it occurs in the Creston rocks which overly the Aldridge rocks (host of the St. Eugene trend). The mineralogy and setting is not unlike that of the upper part of the St. Eugene Mine, where thicker quartzite units host the thicker ore shoots.

There are at least three thicker quartzite units associated with the gossan zone on the Look claims. These areas require further investigation to continue the evaluation of this property.



LAURENCE STEPHENSON, B.Sc., M.B.A.
P. Eng.

APPENDIX I

TRENCH GRAB SAMPLE ASSAYS
LOOK PROPERTY

| SAMPLE# | Mo | Cu | Pb | Zn | Ag | Ni | Co | Mn | Fe | As | U | Au | Th | Sr | Cd | Sb | Bi | V | Ca | P | La | Cr | Mg | Ba | Ti | B | Al | Na | K | W | Pb | Zn | Ag | Au | Au | | |
|---------|-----|-------|------|------|------|-----|-----|-------|-------|-----|-----|-----|-----|-----|-----|-----|-----|-----|-----|------|-----|-----|-----|-----|-----|-----|------|-----|-----|-----|-----|-----|------|------|-----|-----|-----|
| | ppm | ppm | ppm | ppm | ppm | ppm | ppm | ppm | % | ppm | ppm | ppm | ppm | ppm | ppm | ppm | ppm | ppm | % | % | ppm | ppm | % | ppm | % | ppm | % | % | % | ppm | % | % | oz/t | oz/t | ppb | | |
| 90LTL-1 | 9 | 58 | 57 | 65 | .1 | 8 | 16 | 756 | 33.19 | 5 | 6 | ND | 2 | 1 | 2.4 | 5 | 14 | 2 | .01 | .025 | 2 | 2 | .01 | 6 | .01 | 2 | .18 | .01 | .01 | 1 | .01 | .01 | .01 | .001 | | | |
| 90LTL-2 | 3 | 107 | 16 | 82 | .1 | 9 | 17 | 1692 | 21.27 | 5 | 9 | ND | 4 | 1 | 1.3 | 2 | 9 | 13 | .01 | .019 | 7 | 11 | .18 | 11 | .01 | 2 | 1.56 | .01 | .01 | 1 | .01 | .01 | .01 | .001 | | | |
| 90LTL-3 | 25 | 442 | 326 | 111 | 16.2 | 12 | 32 | 99999 | 29.91 | 26 | 5 | ND | 9 | 380 | 7.7 | 2 | 23 | 6 | .03 | .035 | 10 | 3 | .01 | 505 | .01 | 2 | .35 | .02 | .19 | 1 | .04 | .01 | .42 | .001 | | | |
| 90LTL-4 | 1 | 98 | 44 | 64 | .2 | 8 | 20 | 2071 | 33.26 | 13 | 8 | ND | 2 | 1 | 1.0 | 2 | 8 | 4 | .01 | .016 | 2 | 1 | .01 | 10 | .01 | 2 | .18 | .01 | .01 | 1 | .01 | .01 | .01 | .001 | | | |
| 65578 | 400 | 20000 | 1120 | 19.8 | | | | | | | | | | | | | | | | | | | | | | | | | | | | | | | | 2.0 | 102 |

EXHIBIT "A"

STATEMENT OF EXPENDITURES

GEOLOGICAL PROSPECTING AND MAPPING PROGRAM

ON LOOK 1 TO 31 AND 36 TO 43 CLAIMS
FT. STEELE M.D.

Covering the period of September 17th to October 5th, 1990

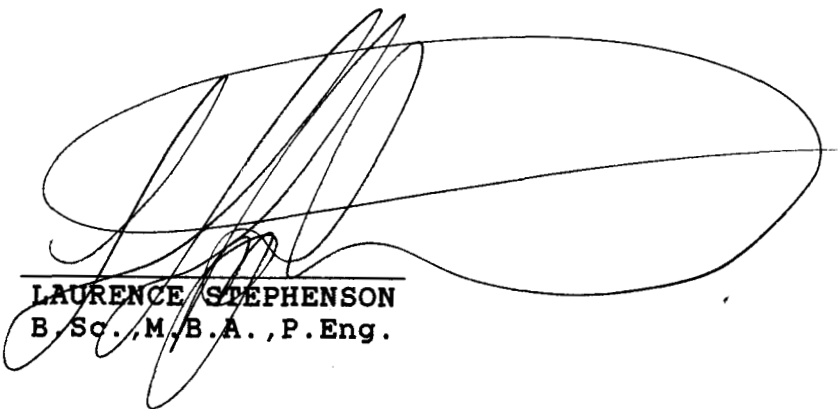
SALARIES:

| | |
|--|------------|
| G. DePaoli - Geologist - Prospecting/mapping/ plotting data - 11 days @ \$200/day | \$2,200.00 |
| L. Stephenson - P.Eng. - Report writing + interpretation - 3.5 days @ \$400 | 1,400.00 |
| J. Termuende - Draftsperson - 2 days @ \$125/day | 375.00 |

TRANSPORTATION:

| | |
|-----------------------------------|---------------|
| 1 - 4x4 Truck; 11 days @ \$50/day | <u>550.00</u> |
|-----------------------------------|---------------|

TOTAL = \$4,525.00



LAURENCE STEPHENSON
B.Sc., M.B.A., P.Eng.

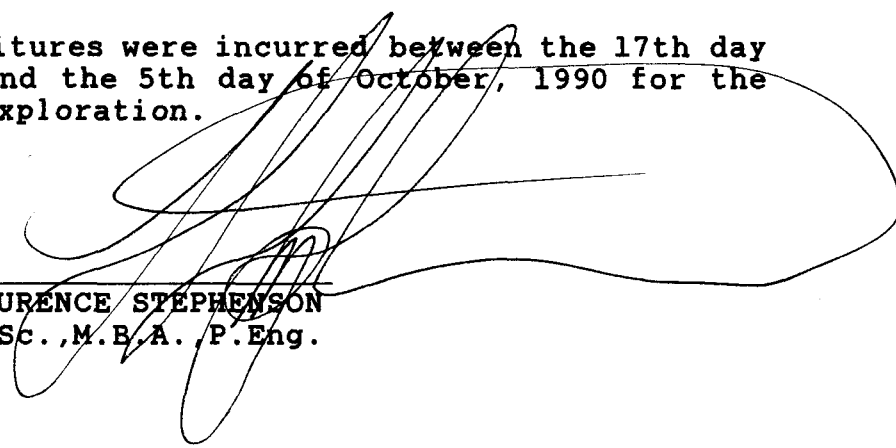
IN THE MATTER OF THE
B.C. MINERAL ACT
AND
IN THE MATTER OF A GEOLOGICAL PROSPECTING
AND MAPPING PROGRAM
CARRIED OUT ON THE LOOK PROPERTY
MOYIE AREA

in the Ft. Steele Mining Division of
of the Province of British Columbia
More Particularly N.T.S. 82G/5W + 4E

A F F I D A V I T

I, L. Stephenson, of the City of Cranbrook, in the Province of British Columbia, make oath and say:

1. That I am employed as a Geologist by Kokanee Explorations Ltd. and as such have a personal knowledge of the facts to which I hereinafter depose:
2. That annexed hereto and marked as Exhibit "A" to this my Affidavit is a true copy of expenditures incurred on a geological mapping and prospecting program, on the Look mineral claims;
3. That the said expenditures were incurred between the 17th day of September, 1990 and the 5th day of October, 1990 for the purpose of mineral exploration.



LAURENCE STEPHENSON
B.Sc., M.B.A., P.Eng.

AUTHOR'S QUALIFICATIONS

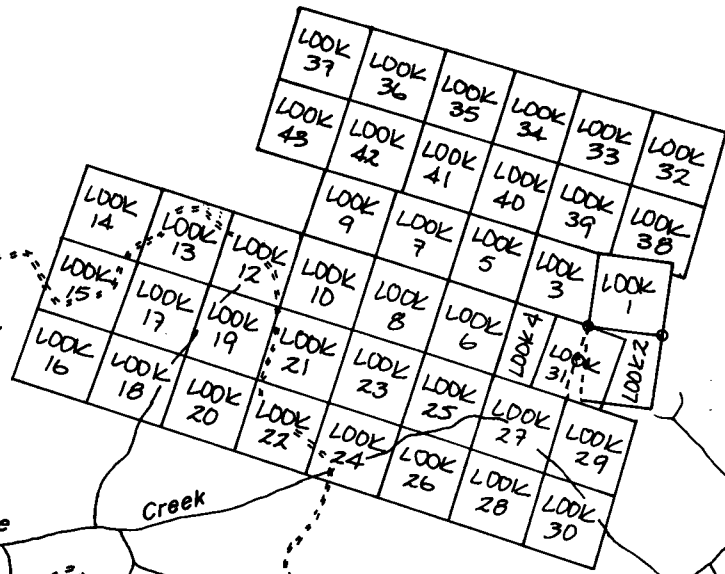
I, Laurence Stephenson, of Cranbrook, B.C., in the Province of British Columbia, do hereby certify that:

1. I graduated from Carleton University in 1975 with a Bachelor of Science degree in Geology then, in 1985, graduated from York University with a Masters of Business Administration;
2. I am registered as a Professional Engineer for the Province of Ontario (1981) and currently a member in good standing;
3. I have had over 23 years experience in the field of mining exploration.



LAURENCE STEPHENSON
B.Sc., M.B.A., P.Eng.

Glencairn Creek



Sunrise

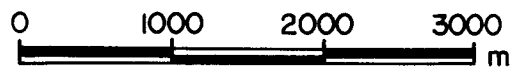
Creek

Tepce Creek

N.T.S. 82G/4W & 5W

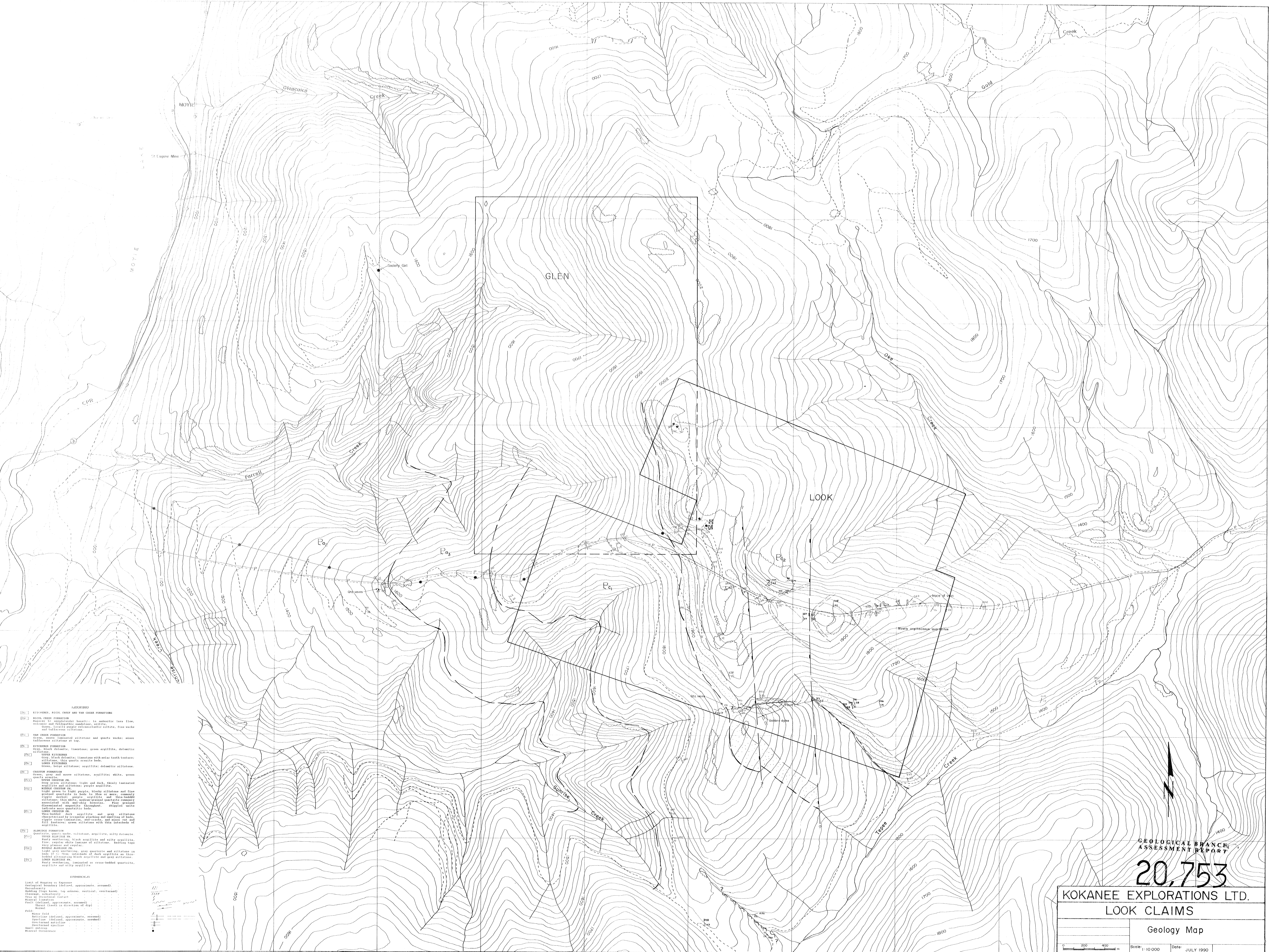
| |
|----------------------------|
| KOKANEE EXPLORATION |
| LOOK PROPERTY |

LOCATION MAP



Scale: 1:50 000

Date: Dec/90



- LEGEND**
- [S1] RIVERVIEW, BUCK, CHEP AND VAN CREEK FORMATIONS
 - [S2] BUCK CHEP FORMATION
Medium to fine grained, locally to medium fine flow, massive to slightly bedded, siliceous, silty sandstone, locally purple micaceous siltite, fine sand and calcareous siltstone.
 - [S3] VAN CREEK FORMATION
Coarse, more laminated siltstone and quartz wacke; silty, buffaceous siltstone at top.
 - [S4] RIVERVIEW FORMATION
Grey, black dolomite; limestone; green argillite, dolomitic siltstone.
 - [S5] UPPER SILTSTONE
Grey, black dolomite; limestone with micac tooth texture; silty black quartz; argillite bed.
 - [S6] LOWER SILTSTONE
Grey, lower siltstone; argillite; dolomitic siltstone.
 - [S7] CHESTON FORMATION
Grey, grey and some siltstone; argillite; white, green quartz argillite.
 - [S8] UPPER CHESTON PM
Light and dark, shaly laminated argillite and siltstone; purple argillite.
 - [S9] BUCK CHEP PM
Light green to light purple, blocky siltstone and fine grained quartzite to black, to fine to very, coarse, light to dark purple, blocky argillite and siltstone; thin white, medium grained quartzite commonly associated with argillite. Bedding fine grained dolomitic argillite throughout. Stippled with some clayey beds.
 - [S10] This bedded dark argillite and very siltstone interbedded by irregular bedding and bedding of beds, light green siltstone, and coarse sandstone on and fill footwall; green siltstone with thin interbeds of argillite.
 - [S11] ALDRIDGE FORMATION
Quartzite; quartz wacke, siltstone, argillite, silty dolomite.
 - [S12] UPPER ALDRIDGE PM
Purple argillite; black argillite and silty argillite, low, purple white laminae of siltstone. Bedding tops with purple argillite.
 - [S13] Lower Aldridge PM
Light grey weathering, grey quartzite and siltstone to bed 25 to 30 cm, interbeds of dark argillite and thin bedded silty weathering black argillite and grey siltstone. Lower Aldridge PM contains an iron-banded quartzite, argillite and silty argillite.

- SYMBOLS**
- Limit of Mapping or Exposure
 - Uncertainty
 - Boundary (top, bottom, top-bottom, vertical, overland)
 - Closure, uncertainty
 - Area of Discovered Deposit
 - Point (located, approximate, assumed)
 - Thrust fault (no direction of dip)
 - Normal
 - Reverse
 - Fault
 - Strike-slip
 - Anticline (location, approximate, assumed)
 - Syncline (location, approximate, assumed)
 - Overturned anticline
 - Overturned syncline
 - Mineral Occurrence

GEOLOGICAL BRANCH
ASSESSMENT REPORT

20,753

KOKANEE EXPLORATIONS LTD.

LOOK CLAIMS

Geology Map

Scale 1:10 000 Date: JULY 1990