

LOG NO: 07-01	RD.
ACTION:	
FILE NO:	

BLACKDOME MINING CORPORATION
ASSESSMENT REPORT
for
DRILLING AND TRENCHING ON THE
11, 18 AND 19 VEIN SYSTEM AND
RECLAMATION PROGRAMS ON THE
1990 SOUTH GROUP AT BLACKDOME

**GEOLOGICAL BRANCH
ASSESSMENT REPORT**

20,755

Part 1 of 3

BLACKDOME MINING CORPORATION

REPORT ON DRILLING AND TRENCHING PROGRAM ON THE 11, 18 & 19 VEIN
SYSTEM AND RECLAMATION ON 1990 SOUTH GROUP PROGRAM

APRIL 15 - OCTOBER 31, 1990

1990 SOUTH GROUP
inclusive of
Mining Lease 30, Mining Lease 46, Mining Claims Dome 8, Dome 9,
Dome 10, Dome 11, Dome 14, Dome 15, Dome 16, Star V Fraction
and Loki 2

CLINTON MINING DIVISION

NTS 92 O/8W/7E

51° 21' Latitude 122° 30' Longitude

OPERATOR - BLACKDOME MINING CORPORATION
3A-1315 SUMMIT DRIVE
KAMLOOPS, B.C.
V2C 5R9

OWNER - BLACKDOME MINING CORPORATION

by

J. McCORMACK, PEng-APEBC
BART. A. STRYHAS, PhD

DECEMBER 11, 1990

TABLE OF CONTENTS

INTRODUCTION		
	Location and Access	1.
	Property Description and Ownership	1.
	History	1.
REGIONAL GEOLOGY		4.
PROPERTY GEOLOGY		6.
ECONOMIC GEOLOGY		9.
SUMMARY OF 1990 PROGRAM		11.
18 VEIN TRENCHING AND DRILLING		
	Trenching	12.
	Drilling	12.
19 VEIN TRENCHING AND DRILLING		
	Trenching	14.
	Drilling	14.
11 VEIN DRILLING		14.
RECLAMATION		15.
CONCLUSIONS		16.
SUMMARY OF DIAMOND DRILLING		17.
COST STATEMENT SUMMARY		19.
LIST OF REFERENCES		20.
STATEMENTS OF QUALIFICATION		

LIST OF FIGURES

FIGURE 1. INDEX MAP - NTS M92 0/7E & 8W	3.
FIGURE 2. REGIONAL GEOLOGY	5.
FIGURE 3. PROPERTY GEOLOGY	7.
FIGURE 4. BLACKDOME PROPERTY STRATIGRAPHIC COLUMN	8.
FIGURE 5. PLAN OF BLACKDOME PROPERTY SHOWING CLAIMS, MINE GRID AND 1990 DRILLING AREA. SCALE 1:12000	MAP POCKET
FIGURE 6. PLAN OF AREA #11, #18, #19 VEINS - 1990 EXPLORATION DRILL COLLARS. SCALE 1:1500	MAP POCKET
FIGURE 7. LONG SECTION OF 11 VEIN - 1990 EXPLORATION DRILLING	MAP POCKET
FIGURE 8. LONG SECTION OF 18 VEIN - 1990 EXPLORATION DRILLING	MAP POCKET
FIGURE 9. LONG SECTION OF 19 VEIN - 1990 EXPLORATION DRILLING	MAP POCKET
15 CROSS SECTIONS OF DRILLED AREA - 11500N-12200N	APPENDIX II

LIST OF APPENDICES

APPENDIX I

1990 EXPLORATION DRILLING DIAMOND DRILL LOGS

APPENDIX II

CROSS SECTIONS SHOWING DRILLING

APPENDIX III

COST STATEMENT DETAILS

INTRODUCTION

Location and Access

The 1990 South Group is located in the Clinton Mining District approximately 67 kilometers northwest of Clinton and straddles the crest of Blackdome Mountain. The properties fall on NTS Maps 92 O/8W and 92 O/7E.

The property is accessed by all weather road west on the Meadow Lake road from Provincial Highway 97 at 58 Mile, across the Fraser river at the Churn Creek bridge, south on the Empire Valley road to the Blackdome turnoff at Brown Lake and then 30 kilometers west on the Blackdome road to the property.

All units expressed in the report are in metric with assays expressed as grams/tonne. Property plans and sections are oriented to the mine survey grid (Frenier Grid) which is oriented 30° East of True North.

Property Description and Ownership

The 1990 South Group comprises 100 Units grouped together for assessment credit purposes, including Mining Leases 30 and 46 and Mining Claims Dome 8, Dome 9, Dome 10, Dome 11, Dome 14, Dome 15, Dome 16, Star V Fraction and Loki 2. The group is owned and operated by Blackdome Mining Corporation and together with contiguous Mining Claims Dome 3, Dome 6, Loki, Dionne 1, Dionne 2, the Laurie, Star IV, and AJ Fractions and Crown Grants 7871-7880 constitutes the Blackdome Mine property.

The Blackdome Mine is a 210 tonne per day gold-silver operation that began production in May of 1986. The ore shoots are small, high-grade bonanza deposits formed by epithermal mineralization within Eocene volcanic rocks.

History

Gold mineralization was first discovered on the property in 1947 by Lawrence Frenier, who staked the original claims. From the early 1950's to the 1970's, exploration work consisting of prospecting, trenching, diamond drilling and underground development was done by two companies: Silver Standard Mines Ltd. and Empire Valley Gold Mines Ltd. In 1977, Barrier Reef Resources Ltd. staked the surrounding ground and consolidated all the claims under the control of a new company called Blackdome Exploration Ltd. For the next seven years extensive geochemical sampling, trenching, geological mapping, geophysical work, diamond drilling and drifting were carried out on the property by both Blackdome and Heath Steele Mines Ltd. By the end of 1984, cut and diluted ore reserves in all categories stood at 222,500 tonnes grading 22.6 gpt Au (0.66 oz/sdt) and 106 gpt Ag (3.1 oz/sdt) of which 119,450 tonnes grading 21.0 gpt Au (0.61 oz/sdt) and 124 gpt Ag (3.6 oz/sdt) were designated as proven and probable ore. Construction of a mill and camp facility was started in May of 1985 and the mine began operation in May of 1986.

To November 30, 1990, 330,802 tonnes of ore have been milled at an average grade of 22.0 gpt Au (0.64 oz/sdt) to produce 220,867 oz of gold and 741,283 oz of silver.

To date approximately 3,750 meters of strike length have been developed by drifting on 5 structures and 89,092 meters of diamond drilling have been completed on the property. Exploration has principally been trenching of geochemical anomalies and known vein structures followed by relatively widely spaced drilling. This has been followed by drifting along vein strike to known drill intersections. Approximately 90% of the production tonnes have been mined from the #1 and #2 vein structures.

REGIONAL GEOLOGY

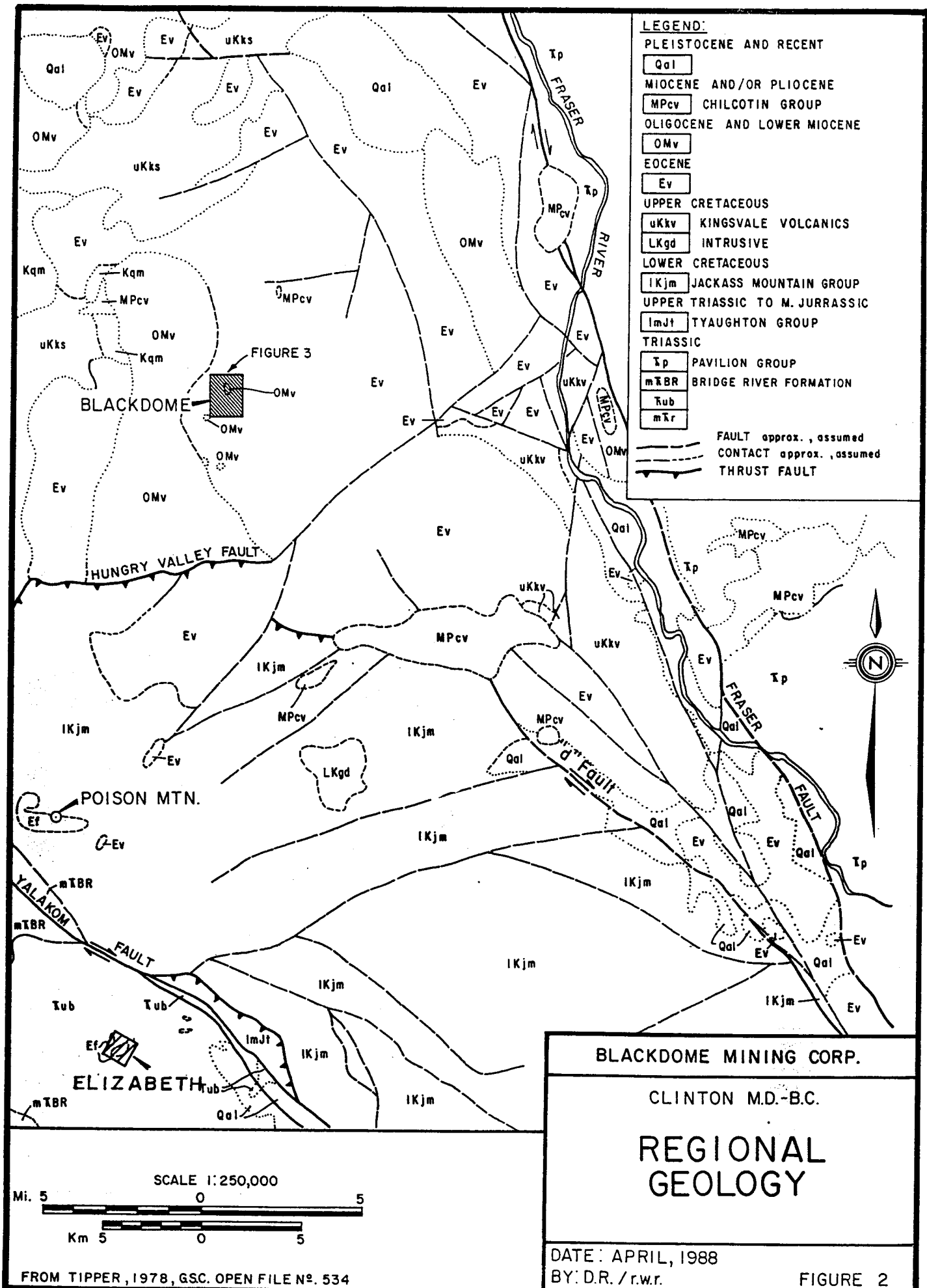
The Blackdome Property is underlain by rocks of Triassic to Tertiary age (Figure 2). The oldest rocks in the vicinity of the mine are sedimentary and igneous assemblages of the Triassic Pavilion Group, located 16 kilometers east along the Fraser River. Ultrabasic rocks of apparent Triassic age have been mapped by Tipper (1978) along the Yalakom Fault, 30 kilometers south of the property. These are overlain by sediments and volcanics which have been correlated with the Lower Cretaceous Jackass Mountain Group and Upper Cretaceous Spences Bridge or Kingsvale Formations (Richardson and Carlyle, 1981; Mathews and Rouse, 1984).

Overlying the Cretaceous strata are volcanics and minor sediments of Eocene age. At Blackdome the volcanics consist of subaerial welded ash, ash-flows, lapilli tuffs, lava flows and debris-flows; all of these vary in composition from andesite to rhyolite. This sequence of volcanic rocks has been correlated with the Kamloops Group which occurs on the Ashcroft and Nicola map sheets to the south and east of the Blackdome area (Duffell and McTaggart, 1952; Mathew and Rouse, 1984; Ewing, 1981). The Eocene rocks at Blackdome are also age equivalents of and are similar in character to the Penticton Group of southern British Columbia, and the Sanpoil and Klondike Mountain rocks of northern Washington. These latter strata host the Republic Mine and other precious metal deposits within the Republic Graben in Washington. Unconformably overlying the Eocene rocks at Blackdome are basalt flows of Late Oligocene or Early Miocene age (Church, 1980).

Major and trace element studies of the Eocene volcanics carried out by Vivian (1988) have shown that they were derived from a calc-alkaline magma in a volcanic arc type of tectonic setting. Eocene quartz monzonite stocks at Poison Mountain, located 22 kilometers southwest of Blackdome Mountain, are host to an auriferous porphyry copper-molybdenum deposit and could reflect the source magma type of a volcanic system similar to the one at Blackdome.

The regional geologic structures consist of four major fault zones: the Fraser, "d", Hungry Valley and Yalakom Faults (figure 2.) (Tipper, 1978; Trettin, 1961). The Fraser Fault, located 10 kilometers to the east of Blackdome, is a north-northwest striking right-lateral strike-slip fault which controls the Fraser River Canyon. The "d" fault, located 15 kilometers southeast of Blackdome, is a northwest striking right-lateral strike-slip branch of the Fraser Fault. The "d" fault has been interpreted as a lateral ramp fault which ties into the Hungry Valley Thrust Fault located 5 kilometers south of Blackdome. This fault has displaced Lower Cretaceous sediments northward onto Upper Cretaceous and Tertiary rocks. The Yalakom fault, located 15 kilometers southwest of Blackdome, is a northwest striking right-lateral strike-slip fault which joins the Fraser Fault to the south.

This regional structural fabric has been an important control in the development of mineralized structures at Blackdome. The overall northwest oriented, right-lateral, strike-slip displacement has generated a subsidiary fabric of north to northeast striking extension veins and normal faults. It is these extension structures which host the gold mineralization at Blackdome.



BLACKDOME

HUNGRY VALLEY FAULT

POISON MTN.

ELIZABETH

BLACKDOME MINING CORP.
 CLINTON M.D.-B.C.
REGIONAL GEOLOGY
 DATE: APRIL, 1988
 BY: D.R. / r.w.
 FIGURE 2

PROPERTY GEOLOGY

The predominant rock units at Blackdome are Eocene intermediate to felsic volcanics and Oligocene to Lower Miocene basalts (Figures 3 and 4). The gold-silver mineralization has been found only in the Eocene volcanic rocks and is truncated by the overlying disconformable post-ore basalts.

The Eocene rocks have been subdivided into three stratigraphic units. The oldest are a series of predominantly andesitic and dacitic flows and pyroclastics called the Lower Andesite. These are overlain by a sequence of mainly rhyolitic tuffs, lavas and debris-flow deposits known locally as the Rhyolite Unit. The youngest unit consists of andesite to dacitic andesite flows called the Upper Andesite (see Figures 3 and 4). All these units are fairly flat-lying with dips seldom in excess of 25 degrees to the southeast or northwest (Rennie 1987).

The structural geology of the mine consists of a complexly interrelated network of normal-right-lateral faults and extension veins. The dominant structures are the #1 and #2 faults. These form a closely-spaced, anastomosing fault system which strikes north-northeast and dips 40-70 degrees northwest. These faults illustrate at least three episodes of activity consisting of early faulting, veining and late faulting. The faults are 0.5-3.0 meters wide with textures ranging between clay gouge, competent quartz vein and gouge-vein mixtures. The #1 and #2 faults have produced 90% of the ore at Blackdome.

Numerous structures parallel to the #1 and #2 faults are also known to contain gold mineralization. At the north end of the property the Redbird and Giant veins are located to the west of the #1-#2 structure. These are each distinctly separate parallel structures located 300-500 meters apart and do not join the #1-#2 structure. Near the south end of the mine, the #11, #18, #19, #20 and #21 veins are semi-parallel structures located east of the #1-#2 structure. These veins appear to be interconnected with the #1-#2 structure and with each other. They are spaced 20-100 meters apart and show a normal displacement opposite that of the #1-#2 faults; i.e. down dropped to the east.

To date the #18 vein is the only parallel structure which has produced a mineable ore shoot. The Redbird, Giant, #11, #18 and #19 structures all appear to have excellent potential for ore shoots but lack sufficient drill testing.

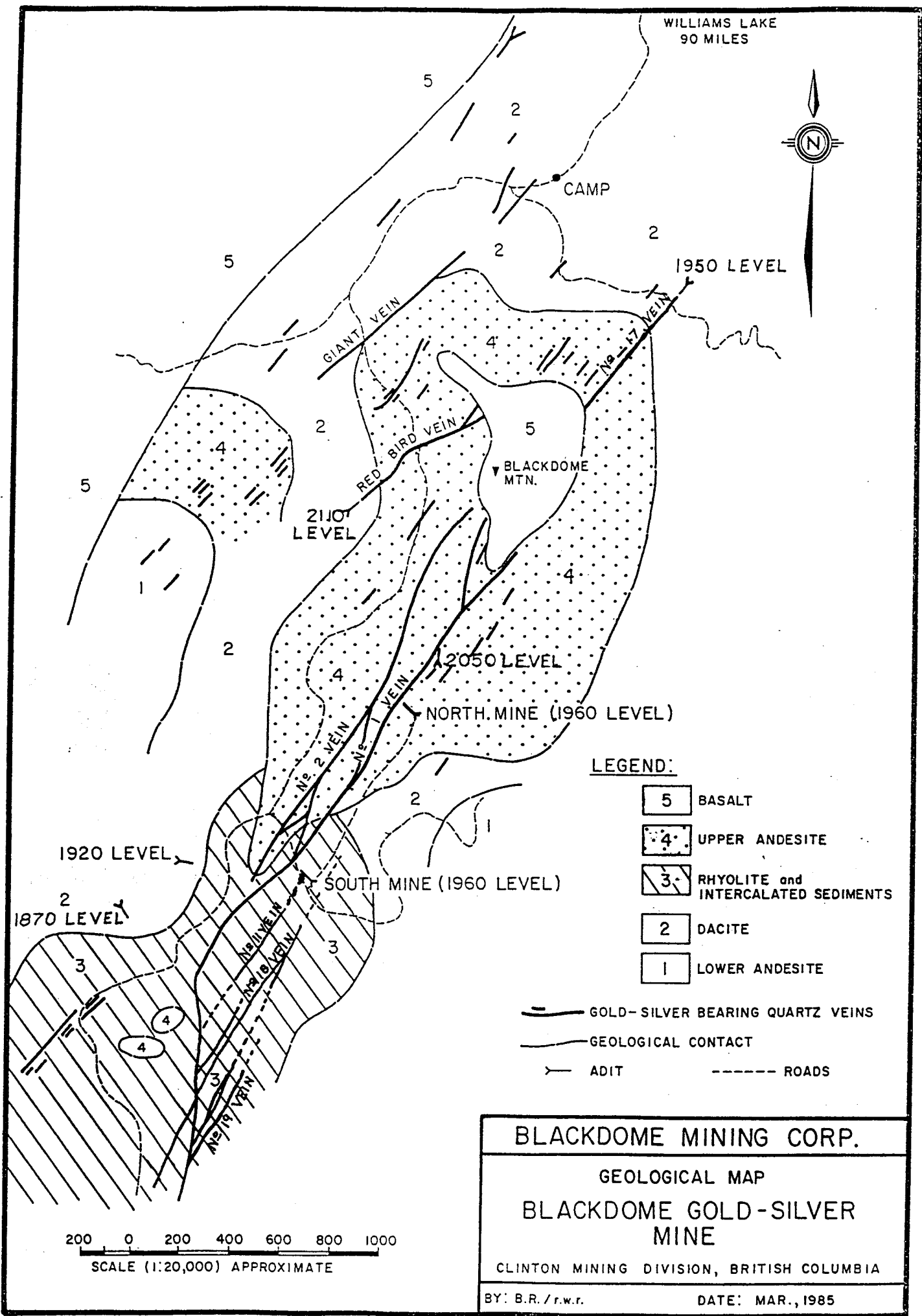
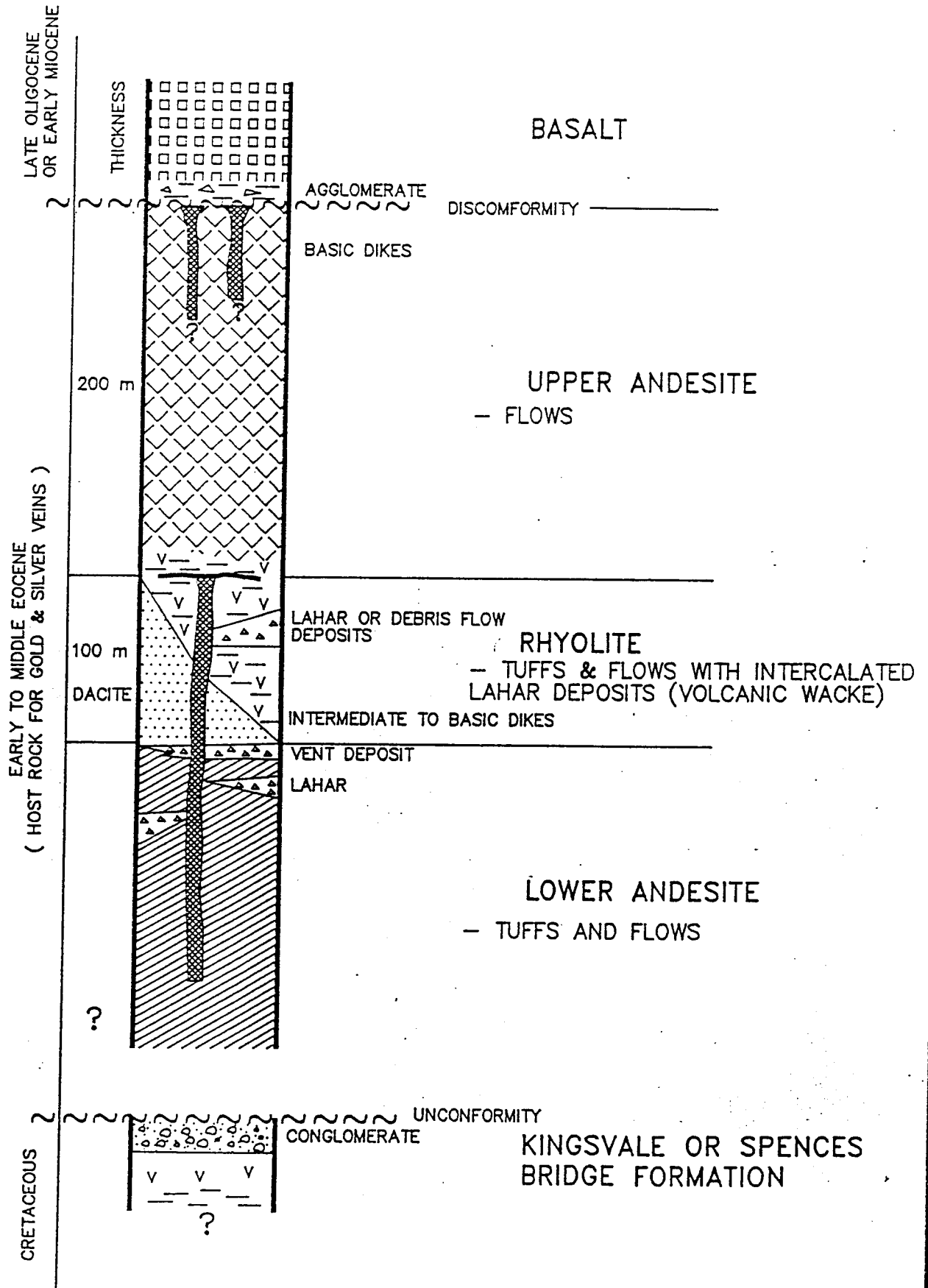


Figure # 3

FIGURE: 4
 BLACKDOME MINING CORP.
 BLACKDOME PROPERTY
 STRATIGRAPHIC COLUMN



ECONOMIC GEOLOGY

The gold and silver mineralization occurs in quartz veins and siliceous breccias. Ore minerals include native gold, electrum, silver, aguilarite (Ag_4SeS), acanthite (Ag_2S) and several unidentified silver sulphosalts. Accessory sulphide minerals that occur in minor amounts are pyrite, chalcopyrite, galena, sphalerite and marcasite (Vivian 1988). The mode of occurrence of these minerals is medium- to fine-grained disseminations and fracture-fillings of euhedral to anhedral grains. Some crystalline gold has been observed. Overall, the metallic minerals are sparsely distributed and represent 1% or less of the total vein material. Base metals are present in geochemically significant amounts but are not economically important.

The deposit is believed to have been precipitated from upward moving hot meteoric waters in a Middle to Late Eocene, or, possibly, Early Oligocene epithermal system. Fluid inclusion studies by Vivian, et al. (1987) indicate that the temperature of deposition was approximately 285 degrees C., at a depth of 500 to 1100 meters. This places it fairly low down in the system, at or below the so-called "boiling level" described at many other epithermal deposits.

Alteration associated with the veins is characterized by the introduction of potassium feldspar, sericite, clay minerals and, most importantly, silica. Silicification is most intense within 1 meter of the fault zones and the quartz content of these zones is commonly over 90%. Silicification is always present in the ore zones but an abundance of quartz does not mean that gold and silver mineralization is present. Acid leaching is also associated with faults and fractures producing a bleached appearance within the strongly silicified zones. Propylitic alteration is common within the andesites on the lower levels of the mine. This alteration is characterized by fine- to medium-grained epidote, chlorite, calcite, chalcopyrite and pyrite fracture-fillings. The propylitic alteration is widespread and can occur as much as 50 meters from the veins. Weathering products such as limonite and pyrolusite are present throughout the faults to a depth of at least 100 meters below surface.

The ore zones are steeply to moderately plunging, elongate "bonanza" shoots associated with the quartz rich sections of the fault zones. The ore-shoots are typically less than 50 meters long by 80 meters high and 2 meters wide. There is a strong correlation between elevation and location of ore shoots. Eighty percent of the known stopes have been located between the 1870 meter and 1990 meter elevations.

Within the ore shoots, the high grade zones occur as circular to elliptical pods separated by narrow zones of moderate to low grade mineralization. Lateral terminations are sharp and very distinct. The boundary of the ore across the strike of the veins is very abrupt, with the change from mineralized to barren rock occurring over a space of a few centimeters. Very little gold and silver occurs in the walls of the veins.

Visible gold is frequently found in hand specimens and in drill core.

The ore is extremely nuggety, as shown by the large number of gold grains greater than 0.5 mm in diameter that report to the gravity concentrate in the mill. For this reason drilling and chip-sampling must be done at close spacing to define the ore boundaries within a vein.

SUMMARY OF PROGRAM

A drilling and trenching program was carried out from April 1990 through July 1990 to examine the lateral extent and mineralization potential of the 18 and 19 veins. This work followed the discovery of a mineable ore shoot on the 18 vein and significant mineralization on the 19 vein during a drill program conducted in February and March of 1990. In addition to the drilling and trenching on the 18 and 19 veins, a drill program was carried out to test for mineralization on the 11 vein where 1989 trenching had yielded assays up to 151 Au-g/t over a 0.9 meter vein width. Concurrent with the drilling and trenching program, reclamation of previously disturbed land was carried out.

Drilling	43 NQ2 diamond drill holes totaling 5383.2 meters
Trenching	3785 square meters of trenching in 14 trenches
Reclamation	Cat 235 Backhoe - 235.5 hours Cat D8N Dozer - 320 hours

Figure 5 and 6 are plans of the project area oriented to the mine survey grid (Frenier) showing drill collars and surface expressions of the 1, 11, 18 and 19 vein systems. Figure 7-9 are north-south long sections of the 11, 18, and 19 veins showing the trench locations and drill intersections. All assays are listed as Au-grams/tonne, Ag-grams/tonne and true width of intersection in meters. Figure 10 shows the 1990 trenching and reclamation activity.

18 VEIN TRENCHING AND DRILLING

Trenching

Eleven across strike trenches were excavated to locate the surface expression of the # 18 vein. These were spaced at 50-125 meter intervals and cover the area from the 11550N section northward to the 12250N section. The surface exposure of the # 18 vein has a broad range of textures. In the 11550N trench directly above the # 18 stope the structure is mainly pure quartz vein 0.1-0.5 meters wide. In the 11650N trench, 100 meters above an ore grade drill hit, the structure consists of thin quartz veinlets 1 cm. wide with a stockwork texture. The 11700N trench displays the structure as a 2 meter wide zone of highly fractured country rock with no quartz present. The outcrops at the 11825 northing and the trench at 11875N show the structure as a 2 meter wide zone of highly silicified country rock containing breccia zones with a silica matrix. The trench at 12000N shows the structure as a fracture zone 2 meters wide containing two quartz veins 1 cm. wide. At 12050N the trench has exposed a pure quartz vein 1 meter wide.

A hanging wall structure of the # 18 vein is seen in three trenches. The 11650N trench contains a highly fractured-faulted zone, the 11700N trench shows parallel quartz veins 1-4 cm. wide and the 11750N trench displays a discrete fault containing minor quartz veins. Drilling results indicate that this structure becomes a thin gouge-fracture zone to the north.

Diamond Drilling

Surface drilling with NQ2 size core was conducted to test the # 18 vein northward from the # 18 stope at Section 11550N under the trench exposures of the vein. Drilling was targeted to test the structure on approximately 50 meter centers at elevations between 1950MASL and 1900MASL (meters above sea level) with close spaced drilling where economic mineralization was encountered.

A small drill indicated ore zone was found on section 11650N where hole # 742 intersected the vein at the 1895MASL elevation and assayed 149 g/t gold over 0.24 meters true width. Drill hole # 757, 25 meters north and 10 meters below #742 assayed 29 g/t gold over a true width of 0.46 meters. Eleven holes were drilled to encircle these two ore zone holes and all these assayed less than 3 g/t gold over vein width. Two other drill holes in this vicinity, # 740 on section 11600N and # 743 on section 11700N assayed at 7.0 and 8.0 g/t gold respectively over a 0.6 meter vein width. These "sniffs" were followed up with a total of five adjacent drill holes. All of these assayed less than 3.5 g/t gold over vein width.

The hangingwall structure of the # 18 vein noted in the trenching was intersected with 10 drill holes. One of these was a low grade ore intercept but all the remaining holes have been waste.

From section 11725N north to section 12250N eleven holes were drilled at

50 meter intervals along strike targeting the 1925MASL elevation. These holes all intersected the # 18 vein structure. Drill hole # 772 on section 12150N assayed 36.0 g/t gold over 0.69 meters, however the program was terminated before followup drilling could be carried out.

19 VEIN TRENCHING AND DRILLING

Trenching

Four across strike and one along strike trenches have been cut on the # 19 vein. The surface expression of this vein structure consists of zones 5-10 meters wide containing anastomosing quartz veins 1 cm. to 0.3 meters thick. Parallel fracture-gouge-alteration zones 1-10 meters wide are present east and west of the main vein structure.

Diamond Drilling

Underground and surface diamond drilling was conducted to follow up on a previous drill hole # 723 which intersected moderate grade (39 g/t over 0.39 meters) gold mineralization on the # 19 vein. As part of the current program, the discovery hole was surrounded by five drill holes (# 737, # 738, # 739, UG 89 and UG 90) located 15-25 meters away within the vein. Three of these drill holes intersected low grade gold mineralization, the other two holes were barren.

Two additional surface drill holes were located on sections 11525N and 11575N targeting the 1950-1900 meter elevations. The # 19 structure at these locations consisted of a single quartz vein 0.2 meters thick, a 2 meter wide zone of parallel veins and a 1 meter wide zone of 0.2 meter wide gouge faults. No significant assays were returned from these drill holes.

Drilling on the # 19 vein system in this area has returned four low-moderate grade drill hits out of six total holes. Although these results have not defined a possible ore block they do indicate fairly wide spread gold mineralization in this structure. The complexity of this structure may be a factor which influences the widespread low grade distribution of gold. If a more unified coherent zone of the # 19 vein can be located, it may well have a higher grade mineralization.

The surface drill holes into the #19 vein have also intersected a previously unknown structure which has been named the "# 20 Vein". The texture of this vein is variable and ranges from a fracture-shear zone (#737) to a shear zone-quartz vein (#738) to a quartz matrix breccia zone (#739). Low grade gold mineralization was encountered within the two quartz bearing intercepts.

11 VEIN DRILLING

The 11 vein was exposed by trenching along strike between sections 11925N and 12175N in 1989. Assays up to 151 g/t gold over 0.9 meter vein width were attained. Two drill holes in 1989 into the structure did not produce any significant assays. In the current program four holes (#774 - #777) were drilled into the structure between sections 11925N and 11975N. These holes are all located within a 50 meter strike length by 30 meter dip length zone of the vein. Three of the four were mineralized. Two holes (#775 and #777) returned

ore grade assays over narrow widths, 13.4 g/t gold over 0.46 m and 34.4 g/t gold over 0.17 m respectively and #776 returned a significant value of 5.7 g/t over 0.22 m. This area within the #11 vein indicates excellent potential for containing an ore grade stope. Unfortunately the 1990 drill program was terminated before any more drilling could be done in this zone.

RECLAMATION

Concurrent with the drilling and trenching program from April through July 1990 and extending to October 1990 a program of reclamation of disturbed areas was carried out. The program consisted of filling in trenches, open cuts and road ways on the properties for which the assessment is claimed. To carry out the program a Caterpillar D8N dozer with ripper and a Caterpillar 235 Backhoe were used. Subsequent to profiling with the equipment the areas were fertilized and seeded with grasses. The reclaimed areas subject to this report are shown in Figure 10.

CONCLUSIONS

The results of the #18 vein trenching and drilling program indicate that this structure is a continuous vein-fault system and has an along strike length of at least 700 meters. The structure is remarkably planar and does not have the distinctive anastomosing geometry like that of the # 1 and # 2 veins. Map location and orientations suggest that the # 18 vein may continue north as far as the 13200N section where it has been mapped as the Dawson vein. This surface information has been helpful for accurate targeting of drill intercepts and gives at least two points of exposure on each section drilled. Assay results from the trenches have been low grade to no grade. The vein located within the 11550N trench assayed 5.5 and 2.3 g/t Au and the 12050N trench assayed at 4.7 g/t Au over 0.75 meters. The remaining trench assays have all been less than 1.5 g/t Au. Drilling has identified two zone with ore grade mineralization. The first, located at section 11650N contains approximately 6,000 tonnes. The second, located at section 12150N has only one drill intersection and is undefined at this time.

The results of drilling and trenching on the # 19 vein has indicated a structurally complex vein and fault system. The # 19 vein consists of three main zones: a western zone, central zone and eastern zone. The texture of the western zone ranges between a quartz vein or stockwork to a brittle fracture-shear zone with minor gouge. This zone typically carries the highest grade gold values and is the zone shown on the # 19 vein long-section. The texture of the central zone ranges between widely silicified hydrothermal breccia to a quartz vein or stockwork. The texture of the eastern zone ranges from a three meter wide gouge fault to a thin gouge-quartz vein zone.

The results of drilling on the # 11 vein has identified a mineralized zone located at the 11950N section. Drilling is incomplete on this zone and its limits are undetermined at this time.

SUMMARY OF DIAMOND DRILLING - JUNE/JULY 1990 - 11, 18 AND 19 VEINS

Target Vein	Hole No.	Core Size	Dip dd.mm	Length meters	Collar Coord's (Frenier)			Date Collared	
					Azim. dd.mm	Elev. masl	North meters		East meters
#11	774	NQ2	-49.00	47.24	92.44	2003	11976	5152	27-Jul-90
#11	775	NQ2	-49.00	46.94	86.57	1999	11951	5158	27-Jul-90
#11	776	NQ2	-52.00	92.35	90.40	2004	11976	5127	28-Jul-90
#11	777	NQ2	-50.00	87.70	88.17	1996	11925	5137	28-Jul-90
#18	339B	NQ2	-48.70	26.82	0.00	0	0	0	08-Jul-90
#18	482B	NQ2	-61.30	61.27	0.00	0	0	0	09-Jul-90
#18	740	NQ2	-60.00	121.01	92.30	1995	11595	5284	12-Jun-90
#18	741	NQ2	-49.00	93.27	92.10	1982	11648	5272	13-Jun-90
#18	742	NQ2	-59.00	117.04	92.10	1982	11648	5272	14-Jun-90
#18	743	NQ2	-48.00	121.00	90.20	1976	11698	5276	15-Jun-90
#18	744	NQ2	-55.00	153.31	89.09	1989	11624	5267	16-Jun-90
#18	745	NQ2	-50.00	102.71	89.41	1989	11624	5268	17-Jun-90
#18	746	NQ2	-62.00	145.69	90.30	1989	11624	5267	18-Jun-90
#18	747	NQ2	-62.00	124.08	93.50	1995	11595	5281	20-Jun-90
#18	748	NQ2	-50.00	117.35	94.42	2003	11574	5267	21-Jun-90
#18	749	NQ2	-57.00	118.87	96.32	2003	11574	5266	22-Jun-90
#18	750	NQ2	-52.00	260.60	90.57	2018	11648	5173	23-Jun-90
#18	751	NQ2	-51.00	182.27	90.48	2002	11648	5218	27-Jun-90
#18	752	NQ2	-50.00	125.88	92.45	1980	11673	5262	29-Jun-90
#18	753	NQ2	-49.50	109.42	90.25	1970	11724	5265	30-Jun-90
#18	754	NQ2	-49.50	147.22	91.41	1979	11698	5256	02-Jul-90
#18	755	NQ2	-49.50	115.21	92.29	1974	11772	5241	03-Jul-90
#18	756	NQ2	-49.00	117.96	93.02	1971	11827	5232	04-Jul-90
#18	757	NQ2	-59.00	136.55	91.40	1980	11673	5261	04-Jul-90
#18	758	NQ2	-64.00	236.83	94.13	2013	11548	5246	06-Jul-90
#18	759	NQ2	-47.00	92.35	90.50	2013	11549	5243	06-Jul-90
#18	760	NQ2	-47.00	204.19	87.43	1999	11697	5186	10-Jul-90
#18	761	NQ2	-55.00	228.90	90.47	2000	11672	5198	12-Jul-90
#18	762	NQ2	-46.00	156.82	87.37	1988	11697	5222	14-Jul-90
#18	763	NQ2	-44.00	105.77	90.20	1981	11526	5413	16-Jul-90
#18	766	NQ2	-50.00	69.19	87.42	1966	11828	5271	18-Jul-90
#18	767	NQ2	-51.00	101.53	85.43	1978	11876	5233	19-Jul-90
#18	768	NQ2	-51.00	105.46	91.46	1983	11924	5235	20-Jul-90
#18	769	NQ2	-49.00	137.46	91.15	1988	11973	5235	21-Jul-90
#18	770	NQ2	-51.00	118.26	91.16	1992	12053	5245	22-Jul-90
#18	771	NQ2	-54.00	130.45	92.12	1992	12104	5243	24-Jul-90
#18	772	NQ2	-52.00	101.19	89.11	1988	12154	5240	25-Jul-90
#18	773	NQ2	-48.00	121.31	89.24	1990	12194	5207	26-Jul-90

SUMMARY OF DIAMOND DRILLING - JUNE/JULY 1990 - 11, 18 AND 19 VEINS
(continued)

Target Vein	Hole No.	Core Size	Dip dd.mm	Length dd.mm	Collar Coord's (Frenier)			Date Collared	
					Azim.	Elev.	North East		
				dd.mm	meters	dd.mm	masl	meters	meters
#19	737	NQ2	-47.50	175.26	89.50	2001	11473	5363	06-Jun-90
#19	738	NQ2	-62.00	170.08	84.55	1990	11499	5393	08-Jun-90
#19	739	NQ2	-50.00	163.98	85.00	1991	11500	5393	10-Jun-90
#19	764	NQ2	-63.00	74.50	97.30	1979	11575	5424	16-Jul-90
#19	765	NQ2	-51.00	117.35	90.09	1970	11629	5377	16-Jul-90
#11 Subtotal				274.23					
#18 Subtotal				4407.2					
#19 Subtotal				701.17					
<u>Total</u>				<u>5382.6</u>					

All core was logged and stored on site. Assaying was carried out at the minesite laboratory using fire assaying techniques.

COST STATEMENT SUMMARY - See Appendix III for detail

Diamond Drilling

J. T. Thomas

Invoice No.

Feet

Cost

90-13

2,976

\$ 67,408.68

90-15

4,725

104,279.38

90-16

5,469

115,588.88

90-18

4,487

94,860.23

Subtotal

17,657

\$382,137.17

Trenching

Hours

\$ per Hour

Cost

Caterpillar D-8N/Ripper

181.5

125.00

\$ 22,687.50

Subtotal

\$ 22687.50

Reclamation

Hours

\$ per Hour

Cost

Caterpillar D-8N/Ripper

324.0

\$125.00

\$ 40,500.00

Caterpillar 235 Backhoe

235.5

\$120.00

\$ 28,260.00

Subtotal

\$ 68,760.00

Total

\$453,184.67

REFERENCES

- Church, B. N., (1980), "Exploration for Gold in the Blackdome Mountain Area, BC"; BC Ministry of Energy, Mines and Petroleum Resources Paper 1980-1, pp 52-54.
- Dawson, J. M., (1980), Summary Report on the Blackdome Mountain Property, Clinton Mining Division, BC, Unpublished report to Blackdome Exploration Ltd., 41 p.
- Dawson, J. M., (1983), Report on the Blackdome Mountain Property, Clinton Mining Division, BC, Unpublished report to Blackdome Exploration Ltd., 14 p.
- Duffell, S. and McTaggart, K. C., (1952), Ashcroft Map-Area, British Columbia, G.S.C. Memoir No. 262, 122 p.
- Ewing, T. E., (1981), Regional stratigraphy and structural setting of the Kamloops Group, South-central British Columbia, Canadian Journal of Earth Sciences, Vol. 18, pp 1464-1477.
- Lalonde, C. M., and Rennie D. W., (1985), Report on the 1984 Development Programme of Blackdome Exploration Ltd., Unpublished report to Blackdome Exploration Ltd., 29 p.
- Manning L. J., (1982), Report for Blackdome Exploration Ltd. on the 1981 Development of their Blackdome No. 1 Vein, Unpublished report to Blackdome Exploration Ltd., 177 p.
- Mathews, W. H., and Rouse, G. E., (1984), The Gang Ranch - Big Bar area, South-central British Columbia: Stratigraphy, geochronology and palynology of Tertiary beds and their relationship to the Fraser Fault., Canadian Journal of Earth Sciences, Vol. 21, pp 1132-1144.
- Read, P.B., (1988) Geologic Map of the Blackdome Mine Area. Unpublished map for Blackdome Mining Corp. Clinton, B.C.
- Reeve, A. F. and Rennie, D. W., (1985), The Geology of the Blackdome Gold-Silver Deposits, Unpublished Report to the CIMM, 1985.
- Rennie, D. W., (1987), Geology of the Blackdome Gold-Silver Deposits, Unpublished report to the CIMM, 17pp.
- Richardson, P. W. and Carlyle, L., (1981), Report on the 1980 Diamond Drill Programme, Blackdome Gold-Silver Property, Unpublished report to Blackdome Exploration Ltd., 31 pp.
- Tipper, H. W., (1978), Taseko Lakes (920) Map-Area, G.S.C. Open File 534.
- Trettin, H. P., (1961), Geology of the Fraser River Valley between Lillooet and Big Bar Creek, BC, Dept. of Mines and Petroleum Resources Bulletin No. 44.

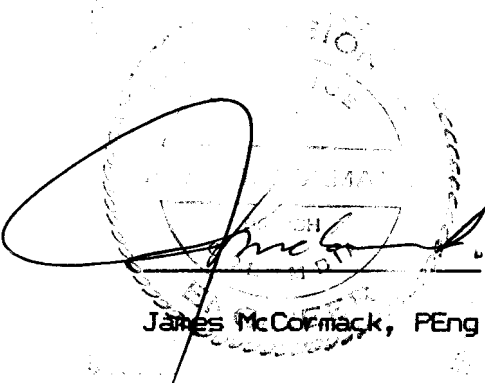
Vivian, G., Morton, R. D., Changkakoti, A. and Gray, J., (1987), The Blackdome Epithermal Ag-Au Deposit, British Columbia, Canada - Nature and Genesis of Ore Fluids, Transactions of the Institution of Mining and Metallurgy Applied Earth Sciences, 21 pp.

Vivian, G. J., (1988), The Geology of the Blackdome Epithermal Deposit, B.C., Unpublished Master Thesis, University of Alberta; Edmonton, Alberta.

STATEMENT OF QUALIFICATIONS

I, James McCormack, do hereby certify that:

1. I am the General Manager for Blackdome Mining Corporation with an office address 3A-1315 Summit Drive, Kamloops, B.C., V2C-5R9.
2. I am a graduate of the University of British Columbia, B.A.Sc. Mineral Engineering 1968.
3. I am a Professional Engineer registered with the Association of Professional Engineers of B.C.
4. I have practiced my profession as a mining engineer for more than twenty years.
5. I directed the work described in this report.



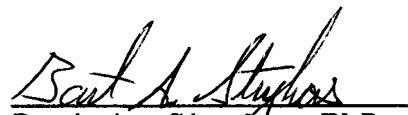
James McCormack, PEng

Dated at Kamloops, B.C. this 11th day of December, 1990.

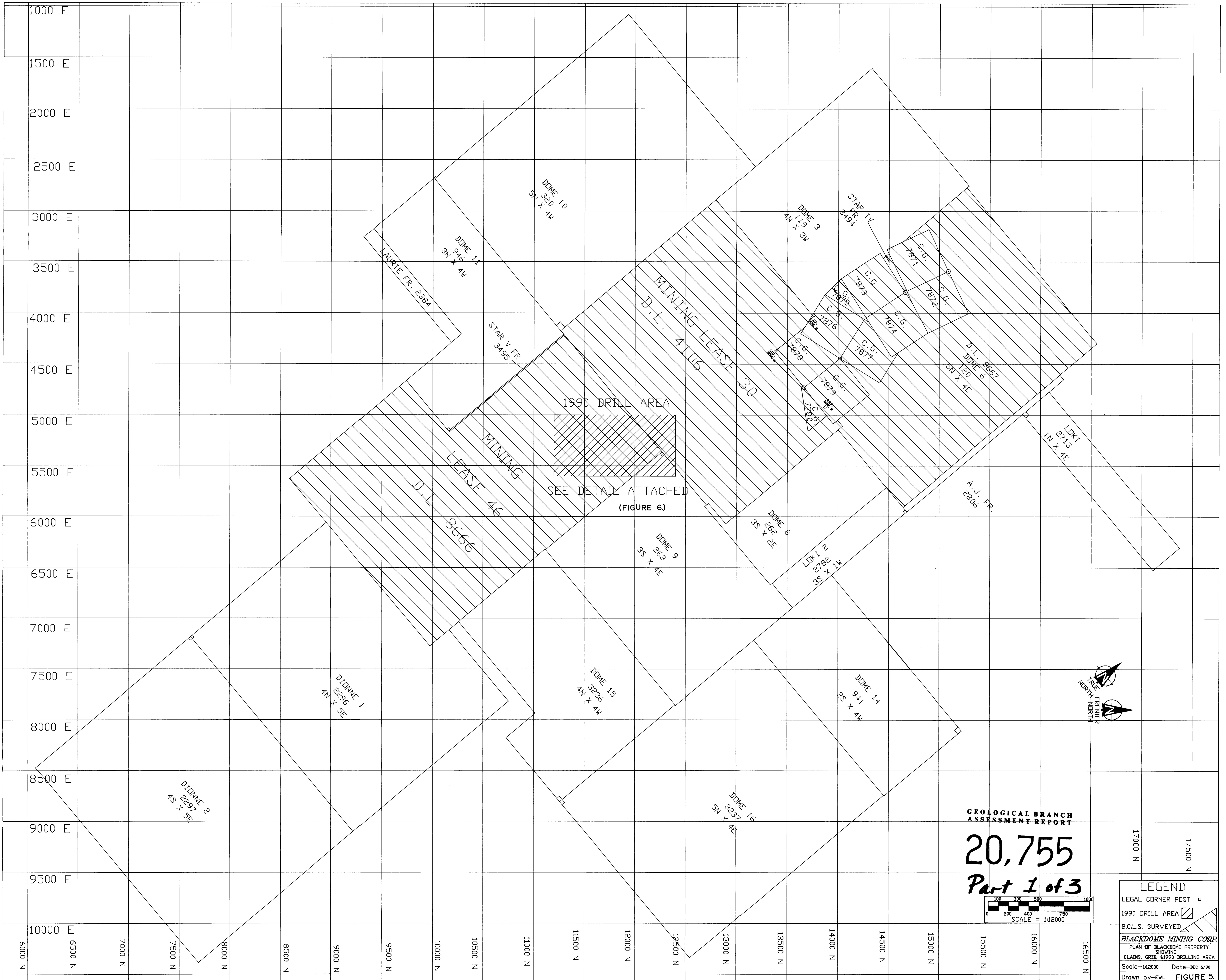
STATEMENT OF QUALIFICATIONS

I, Bart A. Stryhas, do hereby certify that:

1. I am a consulting geologist paid by Blackdome Mining Corporation as Chief Geologist at the Blackdome Mine, Clinton B.C.
2. I am a graduate of the University of Vermont (B.Sc. 1982), the University of Idaho (M.Sc. 1984) and Washington State University (PhD.1987).
3. I have practiced my profession as an exploration geologist for twelve years.
4. I personally supervised the work described in this report.

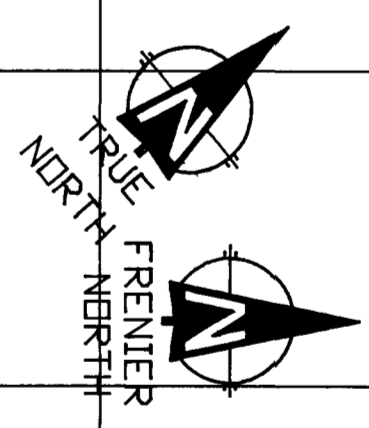
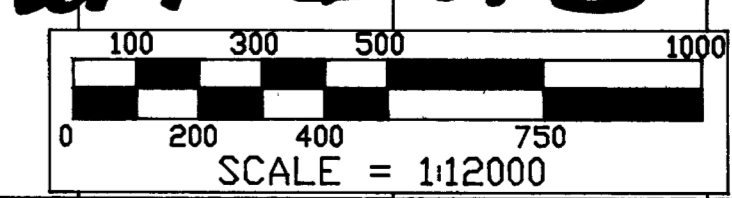

Bart A. Stryhas PhD.

Dated at Clinton, B.C. this 11th day of December, 1990



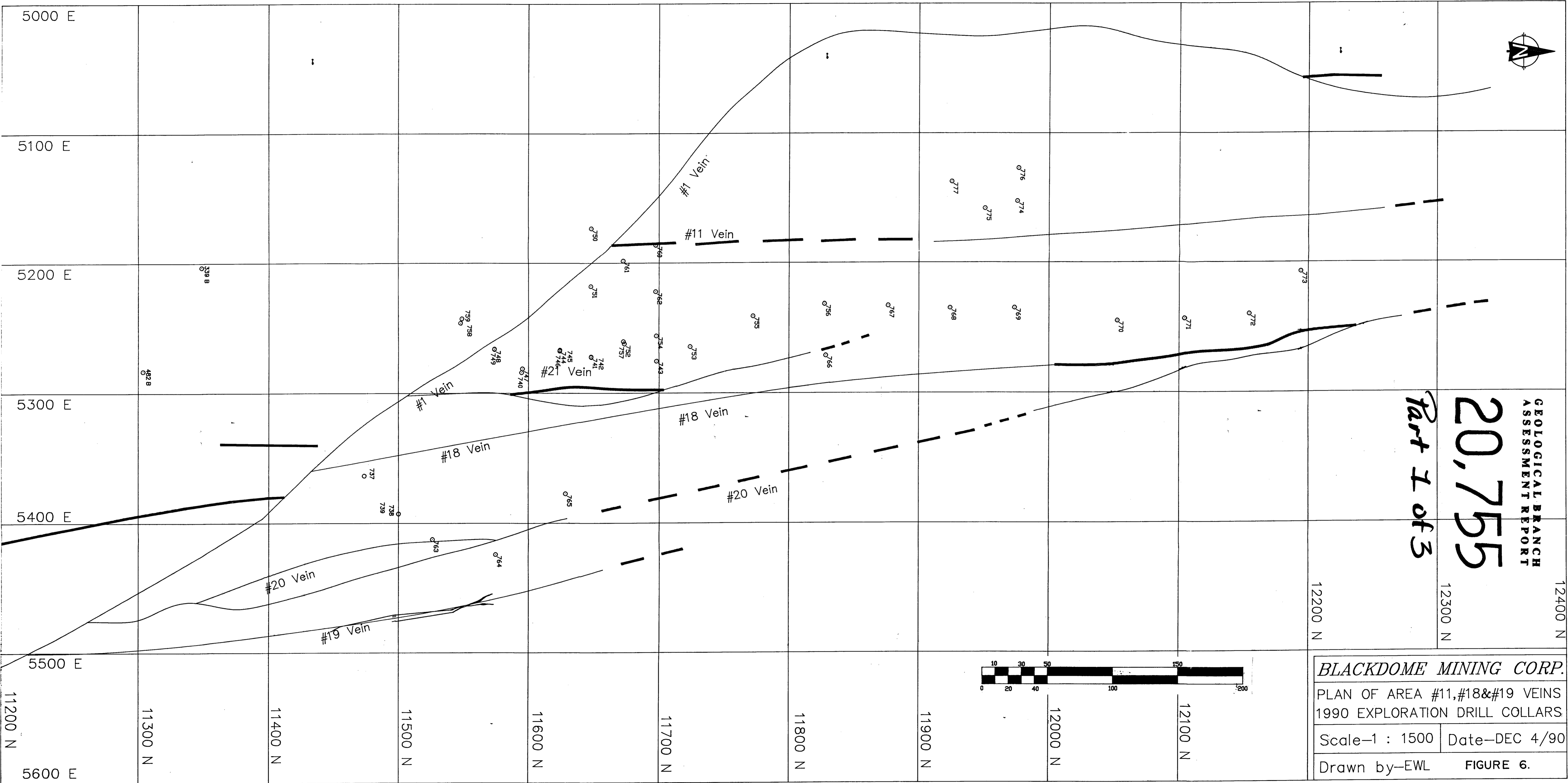
GEOLOGICAL BRANCH
ASSESSMENT REPORT

20,755
Part 1 of 3



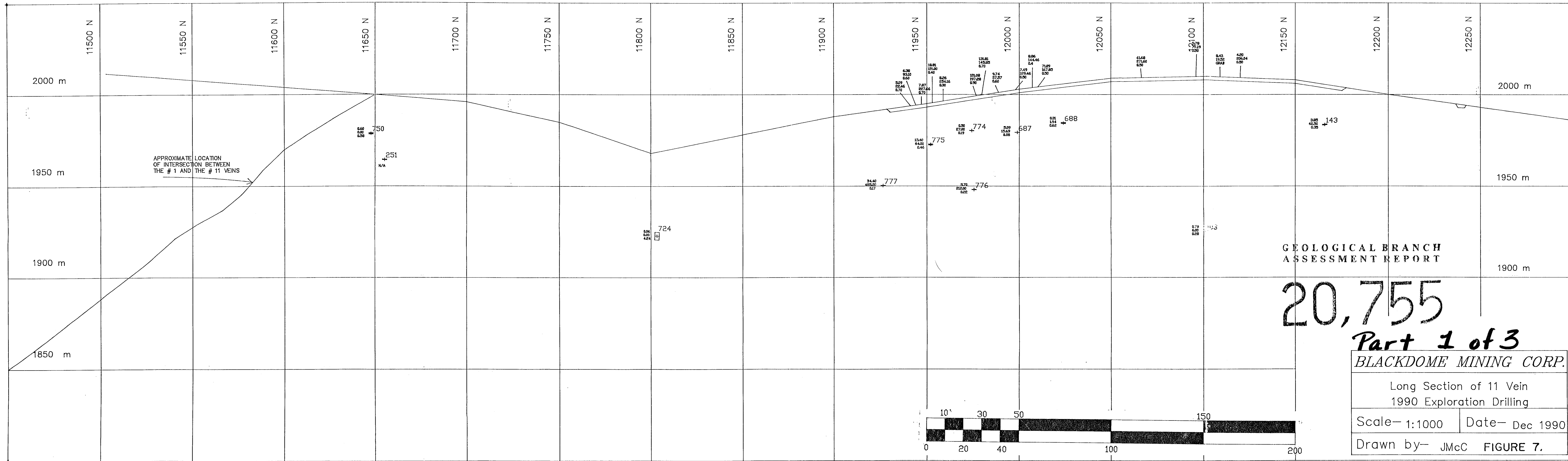
LEGEND	
LEGAL CORNER POST	□
1990 DRILL AREA	▨
B.C.L.S. SURVEYED	
BLACKDOME MINING CORP.	
PLAN OF BLACKDOME PROPERTY	
SHOWING	
CLAIMS, GRID, & 1990 DRILLING AREA	
Scale-1:12000	Date-DEC 6/90
Drawn by-EVL	

FIGURE 5.



20,755
Part 1 of 3
 GEOLOGICAL BRANCH
 ASSESSMENT REPORT

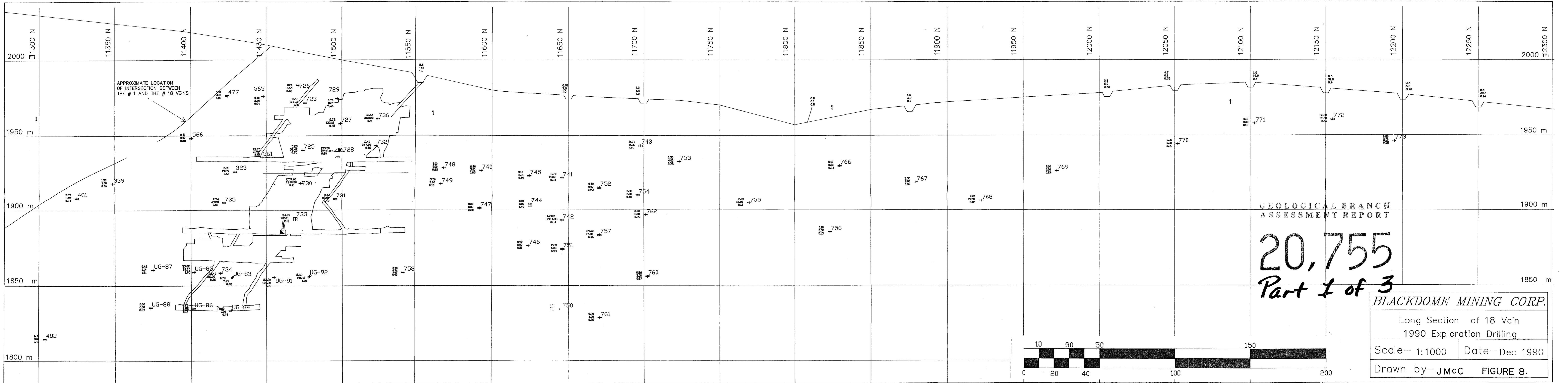
BLACKDOME MINING CORP.
 PLAN OF AREA #11, #18 & #19 VEINS
 1990 EXPLORATION DRILL COLLARS
 Scale-1 : 1500 Date-DEC 4/90
 Drawn by-EWL FIGURE 6.



GEOLOGICAL BRANCH
ASSESSMENT REPORT

20,755
Part 1 of 3

BLACKDOME MINING CORP.	
Long Section of 11 Vein 1990 Exploration Drilling	
Scale- 1:1000	Date- Dec 1990
Drawn by- JMcC FIGURE 7.	

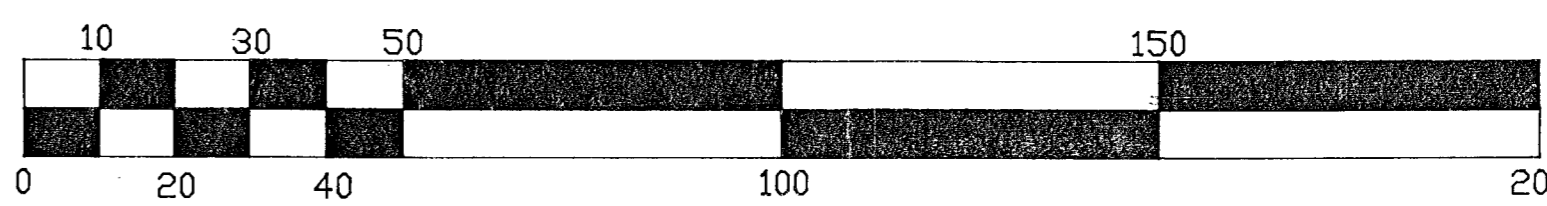


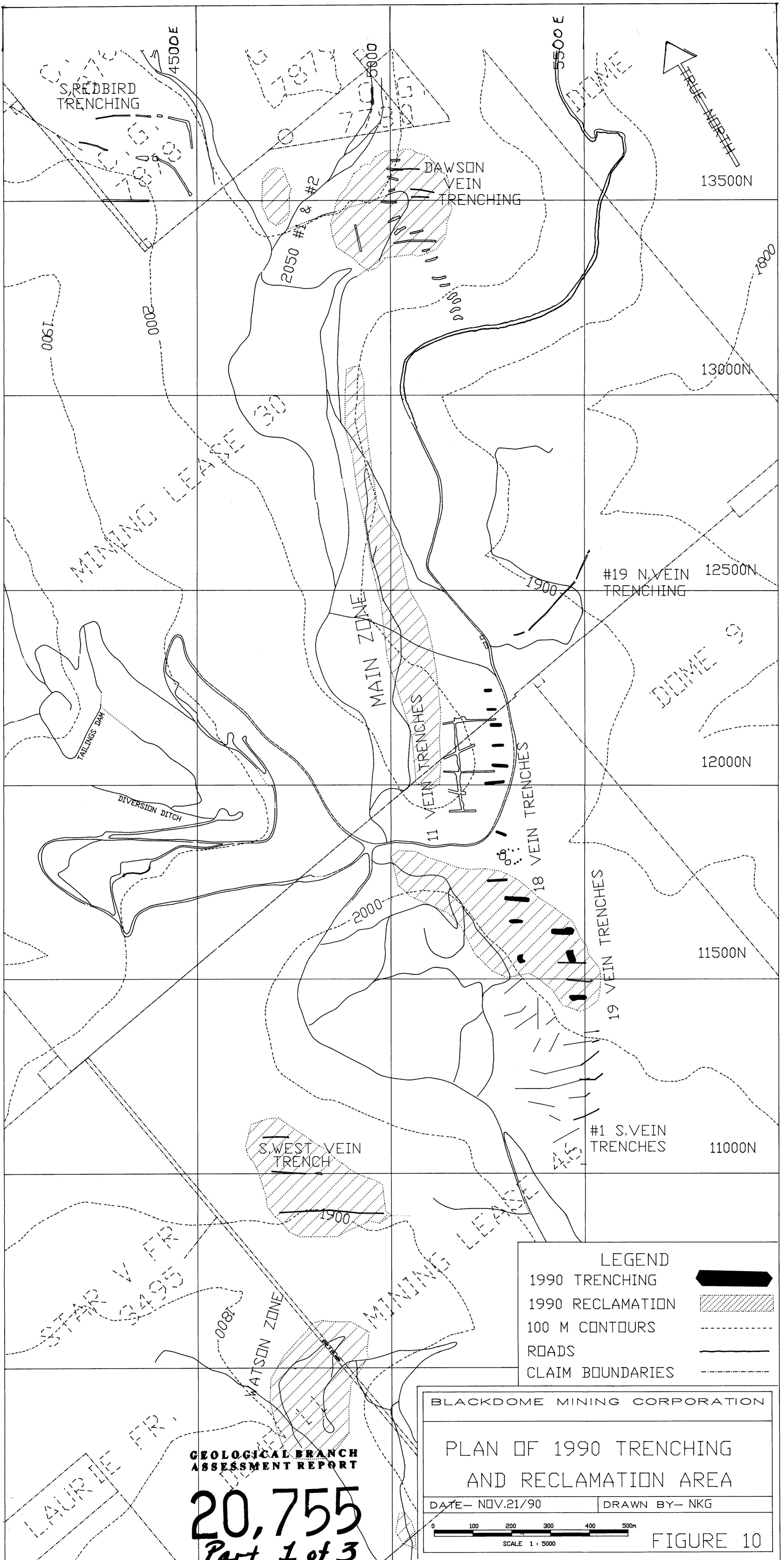
APPROXIMATE LOCATION OF INTERSECTION BETWEEN THE # 1 AND THE # 18 VEINS

GEOLOGICAL BRANCH
ASSESSMENT REPORT

20,755
Part 1 of 3

BLACKDOME MINING CORP.
Long Section of 18 Vein
1990 Exploration Drilling
Scale- 1:1000 | Date- Dec 1990
Drawn by- JMcC | FIGURE 8.





**GEOLOGICAL BRANCH
ASSESSMENT REPORT**
20,755
Part 1 of 3

LEGEND	
1990 TRENCHING	
1990 RECLAMATION	
100 M CONTOURS	
ROADS	
CLAIM BOUNDARIES	

BLACKDOME MINING CORPORATION

**PLAN OF 1990 TRENCHING
AND RECLAMATION AREA**

DATE - NOV.21/90 DRAWN BY - NKG

0 100 200 300 400 500m
SCALE 1 : 5000

FIGURE 10

APPENDIX III

BLACKDOME MINING CORPORATION

COST STATEMENT

for

REPORT ON DRILLING, TRENCHING AND RECLAMATION PROGRAM
FOR ASSESSMENT CREDIT

APRIL - OCTOBER 1990

1990 SOUTH GROUP

inclusive of

Mining Lease 30, Mining Lease 46, Mining Claims Dome 8, Dome 9,
Dome 10, Dome 11, Dome 14, Dome 15, Dome 16, Loki 2 and Star V Fraction

CLINTON MINING DIVISION

NTS 92 0/8W/7E

51° 21' Latitude 122° 30' Longitude

OPERATOR - BLACKDOME MINING CORPORATION

OWNER - BLACKDOME MINING CORPORATION

DECEMBER 7, 1990

SUMMARY OF WORK DONE

A drilling and trenching program was carried out from April 1990 through July 1990 to examine the lateral extent and mineralization potential of the 18 and 19 veins following discovery of a mineable ore shoot on the 18 vein and significant mineralization on the 19 vein during a drill program conducted in February and March of 1990. In addition to the drilling and trenching on the 18 and 19 veins, a drill program was carried out to test for mineralization on the 11 vein where 1989 trenching had yielded assays up to 151 Au-g/t over a 0.9 meter vein width. Concurrent with the drilling and trenching program, reclamation of previously disturbed land was carried out.

Drilling	43 NQZ diamond drill holes totaling 5383.2 meters
Trenching	3785 square meters of trenching in 14 trenches
Reclamation	Cat 235 Backhoe - 235.5 hours Cat D8N Dozer - 320 hours

COST STATEMENT SUMMARY

Diamond Drilling

J. T. Thomas

Invoice No.

Feet

Cost

90-13	2,976	\$ 67,408.68
90-15	4,725	104,279.38
90-16	5,469	115,588.88
90-18	4,487	94,860.23

Subtotal

17,657 \$382,137.17

Trenching

Hours

\$ per Hour

Cost

Caterpillar D-8N/Ripper

181.5

125.00

\$ 22,687.50

Subtotal

\$ 22687.50

Reclamation

Hours

\$ per Hour

Cost

Caterpillar D-8N/Ripper

324.0

\$125.00

\$ 40,500.00

Caterpillar 235 Backhoe

235.5

\$120.00

\$ 28,260.00

Subtotal

\$ 68,760.00

Total

=====
\$453,184.67

Cost Detail - Diamond Drilling

SUMMARY OF DIAMOND DRILLING - JUNE/JULY 1990 - 11, 18 AND 19 VEINS

Target Vein	Hole No.	Core Size	Dip dd.mm	Length meters	Collar Coord's (Frenier)			Date Collared	
					Azim. dd.mm	Elev. masl	North meters		East meters
#11	774	NQZ	-49.00	47.24	92.44	2003	11976	5152	27-Jul-90
#11	775	NQZ	-49.00	46.94	86.57	1999	11951	5158	27-Jul-90
#11	776	NQZ	-52.00	92.35	90.40	2004	11976	5127	28-Jul-90
#11	777	NQZ	-50.00	87.70	88.17	1996	11925	5137	28-Jul-90
#18	339B	NQZ	-48.70	26.82	0.00	0	0	0	08-Jul-90
#18	482B	NQZ	-61.30	61.27	0.00	0	0	0	09-Jul-90
#18	740	NQZ	-60.00	121.01	92.30	1995	11595	5284	12-Jun-90
#18	741	NQZ	-49.00	93.27	92.10	1982	11648	5272	13-Jun-90
#18	742	NQZ	-59.00	117.04	92.10	1982	11648	5272	14-Jun-90
#18	743	NQZ	-48.00	121.00	90.20	1976	11698	5276	15-Jun-90
#18	744	NQZ	-55.00	153.31	89.09	1989	11624	5267	16-Jun-90
#18	745	NQZ	-50.00	102.71	89.41	1989	11624	5268	17-Jun-90
#18	746	NQZ	-62.00	145.69	90.30	1989	11624	5267	18-Jun-90
#18	747	NQZ	-62.00	124.08	93.50	1995	11595	5281	20-Jun-90
#18	748	NQZ	-50.00	117.35	94.42	2003	11574	5267	21-Jun-90
#18	749	NQZ	-57.00	118.87	96.32	2003	11574	5266	22-Jun-90
#18	750	NQZ	-52.00	260.60	90.57	2018	11648	5173	23-Jun-90
#18	751	NQZ	-51.00	182.27	90.48	2002	11648	5218	27-Jun-90
#18	752	NQZ	-50.00	125.88	92.45	1980	11673	5262	29-Jun-90
#18	753	NQZ	-49.50	109.42	90.25	1970	11724	5265	30-Jun-90
#18	754	NQZ	-49.50	147.22	91.41	1979	11698	5256	02-Jul-90
#18	755	NQZ	-49.50	115.21	92.29	1974	11772	5241	03-Jul-90
#18	756	NQZ	-49.00	117.96	93.02	1971	11827	5232	04-Jul-90
#18	757	NQZ	-59.00	136.55	91.40	1980	11673	5261	04-Jul-90
#18	758	NQZ	-64.00	236.83	94.13	2013	11548	5246	06-Jul-90
#18	759	NQZ	-47.00	92.35	90.50	2013	11549	5243	06-Jul-90
#18	760	NQZ	-47.00	204.19	87.43	1999	11697	5186	10-Jul-90
#18	761	NQZ	-55.00	228.90	90.47	2000	11672	5198	12-Jul-90
#18	762	NQZ	-46.00	156.82	87.37	1988	11697	5222	14-Jul-90
#18	763	NQZ	-44.00	105.77	90.20	1981	11526	5413	16-Jul-90
#18	766	NQZ	-50.00	69.19	87.42	1966	11828	5271	18-Jul-90
#18	767	NQZ	-51.00	101.53	85.43	1978	11876	5233	19-Jul-90
#18	768	NQZ	-51.00	105.46	91.46	1983	11924	5235	20-Jul-90
#18	769	NQZ	-49.00	137.46	91.15	1988	11973	5235	21-Jul-90
#18	770	NQZ	-51.00	118.26	91.16	1992	12053	5245	22-Jul-90
#18	771	NQZ	-54.00	130.45	92.12	1992	12104	5243	24-Jul-90
#18	772	NQZ	-52.00	101.19	89.11	1988	12154	5240	25-Jul-90
#18	773	NQZ	-48.00	121.31	89.24	1990	12194	5207	26-Jul-90

SUMMARY OF DIAMOND DRILLING - JUNE/JULY 1990 - 11, 18 AND 19 VEINS
(continued)

Target Vein	Hole No.	Core Size	Dip dd.mm	Length meters	Collar Coord's (Frenier)			Date Collared	
					Azim. dd.mm	Elev. masl	North East meters		
#19	737	NQZ	-47.50	175.26	89.50	2001	11473	5363	06-Jun-90
#19	738	NQZ	-62.00	170.08	84.55	1990	11499	5393	08-Jun-90
#19	739	NQZ	-50.00	163.98	85.00	1991	11500	5393	10-Jun-90
#19	764	NQZ	-63.00	74.50	97.30	1979	11575	5424	16-Jul-90
#19	765	NQZ	-51.00	117.35	90.09	1970	11629	5377	16-Jul-90
#11 Subtotal				274.23					
#18 Subtotal				4407.2					
#19 Subtotal				701.17					
=====				=====					
Total				5382.6					

J. T. THOMAS
DIAMOND DRILLING LTD.

Box 394
Smithers, B.C.
VOJ 2N0
Phone: (604) 847-4381

Branch Office
Timmins, Ont.

TO: Blackdome Mining Corporation
Box 549
Clinton, B.C.
VOK 2K0

Invoice No.: 90-18
Invoice Date: August 14, 1990
Property: Minesite

This is our invoice for diamond drilling and other services to July 30, 1990.

DRILL: A - 21

DIAMOND DRILLING: 4487 Feet	(see attached Page One)	\$ 76,727.70
MAN & MACHINE HOURS:	(see attached Page Two)	6,031.13
MATERIALS:	(see attached Pages Three & Four)	12,101.40

TOTAL: \$ 94,860.23

The above calculations are agreed to by:

Bart Stephens
Company Representative

John Baker
J.T. Thomas Diamond Drilling (1980) Ltd.

26.44 pmt

J. T. THOMAS
DIAMOND DRILLING LTD.

Box 394
Smithers, B.C.
VOJ 2N0
Phone: (604) 847-4361
Blackdome Drill A-21

July 16 - 30, 1990

Branch Office
Box 944
Timmins, Ont. P4N 7H5
Phone: (705) 267-6633
Page Four

MATERIALS USED, LOST OR DAMAGED:

<u>Date</u>	<u>Quantity</u>	<u>Item</u>	<u>Cost</u>	<u>Amount</u>
July 27	1	10' NW Casing	164.00	\$ 164.00
	1	NW Casing Shoe	250.00	250.00
	1	10' NQ Inner Tube	190.40	190.40
July 28	1	10' NW Casing	164.00	164.00
	1	NW Casing Shoe	250.00	250.00
	2	10' NQ Rods (bent in hole)	140.00	280.00
	1	10' NW Casing	164.00	164.00
	1	NW Casing Shoe	250.00	250.00
				<hr/>
			TOTAL:	<u>\$ 12,101.40</u>

J. T. THOMAS

DIAMOND DRILLING LTD.

Bqx 394
 Smithers, B.C.
 V0J 2N0
 Phone: (604) 847-4361
 Blackdome Drill A-21

July 16 - 30, 1990

Branch Office
 Box 944
 Timmins, Ont. P4N 7H5
 Phone: (705) 287-8833
 Page Three

MATERIALS USED, LOST OR DAMAGED:

<u>Date</u>	<u>Quantity</u>	<u>Item</u>	<u>Cost</u>	<u>Amount</u>
July 16	1	10' NW Casing	\$ 164.00	\$ 164.00
	1	NW Casing Shoe	250.00	250.00
July 17	1	10' NW Casing	164.00	164.00
	1	NW Casing Shoe	250.00	250.00
	1	NQ Bit (ruined in cave)	632.00	632.00
July 18	2	10' NW Casing	164.00	328.00
	1	NW Casing Shoe	250.00	250.00
July 19	1	10' NW Casing	164.00	164.00
	1	NW Casing Shoe	250.00	250.00
July 20	2	10' NW Casing	164.00	328.00
	1	NW Casing Shoe	250.00	250.00
	2	10' NQ Rods	140.00	280.00
July 21	1	10' NW Casing	164.00	164.00
	1	NW Casing Shoe	250.00	250.00
	2	10' NQ Rods	140.00	280.00
July 23	1	10' NW Casing	164.00	164.00
	1	NW Casing Shoe	250.00	250.00
July 24	2	10' NW Casing	164.00	328.00
	1	2' NW Casing	34.00	34.00
	1	NW Casing Shoe	250.00	250.00
	1	NQ Bit (ruined in cave)	632.00	632.00
	2	10' NQ Rods	140.00	280.00
July 25	1	NQ Bit (ruined in cave)	632.00	632.00
	1	10' NW Casing	164.00	164.00
	1	NW Casing Shoe	250.00	250.00
	1	NQ Bit (ruined in cave)	632.00	632.00
	2	10' NQ Rods	140.00	280.00
July 26	3	10' NW Casing	164.00	492.00
	1	NW Casing Shoe	250.00	250.00
	1	10' NQ Outer Tube	421.00	421.00
	2	10' NQ Rods	140.00	280.00
July 27	1	10' NW Casing	164.00	164.00
	1	NW Casing Shoe	250.00	250.00
	1	NQ Bit (ruined in cave)	632.00	632.00

J. T. THOMAS

DIAMOND DRILLING LTD.

Box 394
 Smithers, B.C.
 VOJ 2N0
 Phone: (804) 847-4381
 Blackdome Drill A-21

July 16 - 30, 1990

Branch Office
 Timmins, Ont.
 Page Two

<u>Date</u>	<u>Kibzey</u>	<u>Berg</u>	<u>Beaudoin</u>	<u>D. Anderson</u>	<u>N. Anderson</u>	<u>Drill</u>	<u>Cat</u>	<u>Acid Tests</u>
July 16					3		5½	1
July 17		½	<u>Ranseth</u>	½	1½		2	1
July 18		2		<u>Fountain</u>	3		1	1
July 19	½	1		½	3½		5½	1
July 20				½	3		2	2
July 21		½	½	1		N/C	1½	1
July 22	1	2	1	2		1	1	1
July 23				1			3	
July 24				½	3½		1	
July 25	1	1	1	1	3½	N/C	1½	2
July 26				½	3	1	3½	2
July 27			1	1			1½	2
July 28		1			3½		5	2
July 29		1½		1	3		3	1
July 30	<u>Ireland</u>		2	2	1½		1½	1
	1	3					2	
	3½	13½	5½	11½	32½	3	50	23

Total Man & Machine Hours: 69½ hours @ \$ 19.75/hour = \$ 1,372.63
 Total Cat Hours: 50 hours @ \$ 75.00/hour = \$ 3,750.00
 Total Acid Tests: 23 tests @ \$ 39.50/test = \$ 908.50

TOTAL: \$ 6,031.13

J. T. THOMAS

DIAMOND DRILLING LTD.

Box 394
 Smithers, B.C.
 V0J 2N0
 Phone: (804) 847-4381
 Blackdome Drill A-21

July 16 - 30, 1990

Branch Office
 Box 944
 Timmins, Ont. P4N 7H5
 Phone: (705) 267-8633
 Page One

DIAMOND DRILLING:

<u>Hole No.</u>	<u>Date</u>	<u>Overburden</u> <u>From To</u>	<u>Coring</u> <u>From To</u>	<u>Total</u> <u>Footage</u>	<u>Rate</u>	<u>Amount</u>
763	July 16		291 - 347	56	\$ 17.10	\$ 957.6
764		0 - 10		10	17.10	171.0
			10 - 243	233	17.10	3,984.3
765		0 - 10		10	17.10	171.0
			10 - 385	375	17.10	6,412.5
766	July 18	0 - 20		20	17.10	342.0
			20 - 227	207	17.10	3,539.7
767	July 19	0 - 10		10	17.10	171.0
			10 - 333	323	17.10	5,523.3
768	July 20	0 - 20		20	17.10	342.0
			20 - 346	326	17.10	5,574.6
769	July 21	0 - 10		10	17.10	171.0
			10 - 451	441	17.10	7,541.1
770	July 23	0 - 10		10	17.10	171.0
			10 - 388	378	17.10	6,463.8
771	July 24	0 - 22		22	17.10	376.2
			22 - 428	406	17.10	6,942.6
772	July 25	0 - 10		10	17.10	171.0
			10 - 332	322	17.10	5,506.2
773	July 26	0 - 30		30	17.10	513.0
			30 - 398	368	17.10	6,292.8
774	July 27	0 - 10		10	17.10	171.0
			10 - 155	145	17.10	2,479.5
775		0 - 10		10	17.10	171.0
			10 - 154	144	17.10	2,462.4
776	July 28	0 - 10		10	17.10	171.0
			10 - 303	293	17.10	5,010.3
777	July 28	0 - 10		10	17.10	171.0
			10 - 288	278	17.10	4,753.8
TOTAL:				<u>4487'</u>		<u>\$ 76,727.7</u>

J. T. THOMAS
DIAMOND DRILLING LTD.

Box 394
Smithers, B.C.
V0J 2N0
Phone: (804) 847-4381

Branch Office
Timmins, Ont.

TO: Blackdome Mining Corporation
Box 549
Clinton, B.C.
V0K 2K0

Invoice No.: 90-16
Invoice Date: July 23, 1990
Property: Minesite

This is our invoice for diamond drilling and other services to July 15, 1990.

DRILL: A - 21

DIAMOND DRILLING: 5469 Feet	(see attached Page One)	\$ 93,519.90
MAN & MACHINE HOURS:	(see attached Page Two)	7,474.88
MATERIALS:	(see attached Pages Three & Four)	14,594.10

TOTAL: \$ 115,588.88

The above calculations are agreed to by:

Bert Thomas

Company Representative

21.14
Mr. Baker

J.T. Thomas Diamond Drilling (1980) Ltd.

J. T. THOMAS
DIAMOND DRILLING LTD.

Box 394
Smithers, B.C.
V0J 2N0
Phone: (604) 847-4381
Blackdome Drill A-21

July 1 - 15, 1990

Branch Office
Box 944
Timmins, Ont. P4N 7H5
Phone: (705) 267-8633
Page Four

MATERIALS USED, LOST OR DAMAGED:

<u>Date</u>	<u>Quantity</u>	<u>Item</u>	<u>Cost</u>	<u>Amount</u>
July 15	2	10' NW Casing	\$ 164.00	\$ 328.00
	1	NW Casing Shoe	250.00	250.00
	1	NQ Bit (reaming cave & mud)	632.00	632.00
	1	Lubtub	143.00	143.00
			TOTAL:	<u>\$14,594.10</u>

J. T. THOMAS

DIAMOND DRILLING LTD.

Box 394
 Smithers, B.C.
 V0J 2N0
 Phone: (604) 847-4361
 Blackdome Drill A-21

Branch Office
 Box 944
 Timmins, Ont. P4N 7H5
 Phone: (705) 267-6633
 Page Three

July 1 - 15, 1990

MATERIALS USED, LOST OR DAMAGED:

<u>Date</u>	<u>Quantity</u>	<u>Item</u>	<u>Cost</u>	<u>Amount</u>
July 1	1	NQ Bit (reaming cave)	\$ 632.00	\$ 632.00
	1	Lubtub	143.00	143.00
	1	NQ Bit (reaming cave)	632.00	632.00
	1	Lubtub	143.00	71.50
July 2	3	10' NW Casing	164.00	492.00
	1	NW Casing Shoe	250.00	250.00
	2	10' NQ Rods (belled in mud & sand)	140.00	280.00
July 3	4	10' NW Casing	164.00	656.00
	1	5' NW Casing	94.00	94.00
	1	2' NW Casing	34.00	34.00
	1	NW Casing Shoe	250.00	250.00
July 4	2	10' NW Casing	164.00	328.00
	1	NW Casing Shoe	250.00	250.00
	3	10' NW Casing	164.00	492.00
	1	NW Casing Shoe	250.00	250.00
July 5	1	NQ Bit (reaming cave)	632.00	632.00
	2	10' NW Casing	164.00	328.00
	1	5' NW Casing	94.00	94.00
	1	NW Casing Shoe	250.00	250.00
July 6	2	10' NQ Rods (ruined in gravel seam)	140.00	280.00
July 7	1	NQ Bit (reaming cave)	632.00	632.00
	3	10' NW Casing	164.00	492.00
	1	NW Casing Shoe	250.00	250.00
July 8	1	NQ Bit (reaming cave)	632.00	632.00
	2	10' NQ Rods (belled in cave)	140.00	280.00
July 10	3	10' NW Casing	164.00	164.00
	1	NW Casing Shoe	250.00	250.00
	2	Lubtub	143.00	286.00
July 11	1	NQ Bit (ruined reaming cave)	632.00	632.00
	2	10' NQ Rods (ruined reaming cave)	140.00	280.00
	2	10' NW Casing	164.00	328.00
	1	NW Casing Shoe	250.00	250.00
July 12	1	NQ Reaming Shell *	460.00	460.00
	1	NQ Locking Coupling *	307.80	307.80
	1	NQ Adaptor Coupling	171.80	171.80
		* ruined in sand & gravel		
	1	Lubtub	143.00	143.00
July 13	2	10' NW Casing	164.00	328.00
	1	2' NW Casing	34.00	34.00
	1	NW Casing Shoe	250.00	250.00
July 14	1	NQ Bit (reaming cave & gravel)	632.00	632.00

J. T. THOMAS

DIAMOND DRILLING LTD.

Box 394
 Smithers, B.C.
 V0J 2N0
 Phone: (604) 847-4361
 Blackdome Drill A-21

July 1 - 15, 1990

Branch Office
 Timmins, Ont.
 Page Two

MAN & MACHINE HOURS:

<u>Date</u>	<u>Guay</u>	<u>Kibzey</u>	<u>Beaudoin</u>	<u>D. Anderson</u>	<u>N. Anderson</u>	<u>Drill</u>	<u>Cat</u>	<u>Acid Tests</u>
July 1	2½ <u>Kibzey</u>	2½ <u>Berg</u>		1	3½	2½	3 1½	1 1
July 2			2½	3½	2½	2½	4	1
July 3					3		5½	1 2
July 4		1		1	3		2 2	2 2
July 5		1		1	3		1 2	1 1
July 6		1						1
July 7		1	1½	2½		1½		1 1
July 8	1	4	1	2		1	1½ 2	1 2
July 9	2½	5½	4	5		4 1½	3 3	1 1
July 10		1			3½		5½	1
July 11	1	1	N/C	N/C	2	N/C	2½ 1	1 1
July 12			3	3	3½	3	1	1
July 13	1	1	1	1	3½	1		1
July 14			½	1	4	½	2 4	1 1
July 15			1	1½	4	1	4	1
			3	3	3½	3	4	1
	<u>8</u>	<u>19</u>	<u>17½</u>	<u>25½</u>	<u>39</u>	<u>23½</u>	<u>49½</u>	<u>29</u>

Total Man & Machine Hours: 131½ hours @ \$ 19.75/hour = \$ 2,616.88
 Total Cat Hours: 49½ hours @ \$ 75.00/hour = \$ 3,712.50
 Total Acid Tests: 29 tests @ \$ 39.50/test = \$ 1,145.50

TOTAL: \$ 7,474.88

J. T. THOMAS

DIAMOND DRILLING LTD.

Box 394
 Smithers, B.C.
 VOJ 2N0
 Phone: (604) 847-4361
 Blackdome Drill A-21

Branch Office
 Box 944
 Timmins, Ont. P4N 7H5
 Phone: (705) 267-6633
 Page One

July 1 - 15, 1990

DIAMOND DRILLING:

<u>Hole No.</u>	<u>Date</u>	<u>Overburden</u> <u>From To</u>	<u>Coring</u> <u>From To</u>	<u>Total</u> <u>Footage</u>	<u>Rate</u>	<u>Amount</u>
753	July 1		183 - 359	176	\$ 17.10	\$ 3,009.
754		0 - 30		30	17.10	513.
			30 - 483	453	17.10	7,746.
755	July 3	0 - 47		47	17.10	803.
			47 - 378	331	17.10	5,660.
756	July 4	0 - 20		20	17.10	342.
			20 - 387	367	17.10	6,275.
757		0 - 30		30	17.10	513.
			30 - 448	418	17.10	7,147.
758	July 5	0 - 25		25	17.10	427.
			25 - 779	754	17.10	12,893.
759	July 7	0 - 30		30	17.10	513.
			30 - 303	273	17.10	4,668.
339B re-enter	July 8		440 - 528	88	17.10	1,504.
482B re-enter	July 9		587 - 788	201	17.10	3,437.
760	July 10	0 - 30		30	17.10	513.
			30 - 670	640	17.10	10,944.
761	July 11	0 - 20		20	17.10	342.
			20 - 751	731	17.10	12,500.
762	July 13	0 - 22		22	17.10	376.
			22 - 514	492	17.10	8,413.
763	July 15	0 - 20		20	17.10	342.
			20 - 291	271	17.10	4,634.
TOTAL:				5469'		\$93,519.

J. T. THOMAS
DIAMOND DRILLING LTD.

Box 394
Smithers, B.C.
V0J 2N0
Phone: (604) 847-4361

Branch Office
Timmins, Ont.

TO: Blackdome Mining Corporation
Box 549
Clinton, B.C.
VOK 2K0

Invoice No.: 90-15
Invoice Date: July 11, 1990
Property: Minesite

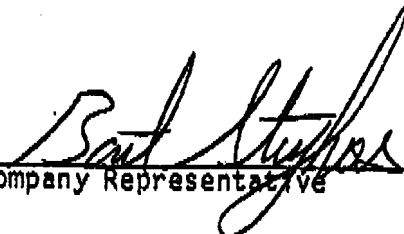
This is our invoice for diamond drilling and other services to June 30, 1990.

DRILL: A-21

DIAMOND DRILLING: 4725 Feet	(see attached Page One)	\$ 80,797.50
MAN & MACHINE HOURS:	(see attached Page Two)	5,595.38
MATERIALS:	(see attached Pages Three & Four)	17,886.50

TOTAL: \$ 104,279.38

The above calculations are agreed to by:



Company Representative



J.T. Thomas Diamond Drilling (1980) Ltd.

J. T. THOMAS

DIAMOND DRILLING LTD.

Box 394
 Smithers, B.C.
 V0J 2N0
 Phone: (804) 847-4381

Branch Office
 Box 944
 Timmins, Ont. P4N 7H5
 Phone: (705) 267-6633
 Page One

Blackdome Drill A-21

June 16 - 30, 1990

DIAMOND DRILLING:

<u>Hole No.</u>	<u>Date</u>	<u>Overburden</u> <u>From To</u>	<u>Coring</u> <u>From To</u>	<u>Total</u> <u>Footage</u>	<u>Rate</u>	<u>Amount</u>
743	June 16		218 - 397	179	\$ 17.10	\$ 3,060.9
744		0 - 40		40	17.10	684.0
			40 - 503	463	17.10	7,917.3
745	June 17	0 - 44		44	17.10	752.4
			44 - 335	291	17.10	4,976.1
746	June 18	0 - 30		30	17.10	513.0
			30 - 478	448	17.10	7,660.8
747	June 20	0 - 25		25	17.10	427.5
			25 - 407	382	17.10	6,532.2
748	June 21	0 - 30		30	17.10	513.0
			30 - 385	355	17.10	6,070.5
749	June 22	0 - 30		30	17.10	513.0
			30 - 390	360	17.10	6,156.0
750	June 23	0 - 45		45	17.10	769.5
			45 - 750	705	17.10	12,055.5
			750 - 854	104	17.10	1,778.4
751	June 27	0 - 40		40	17.10	684.0
			40 - 598	558	17.10	9,541.8
752	June 29	0 - 40		40	17.10	684.0
			40 - 413	373	17.10	6,378.3
753	June 30	0 - 30		30	17.10	513.0
			30 - 183	153	17.10	2,616.3
TOTAL:				4725'		\$ 80,797.8

J. T. THOMAS
DIAMOND DRILLING LTD.

Box 394
Smithers, B.C.
V0J 2N0
Phone: (604) 847-4361
Blackdome Drill A-21

June 16 - 30, 1990

Branch Office
Box 944
Timmins, Ont. P4N 7H5
Phone: (705) 267-6633
Page Four

MATERIALS USED, LOST OR DAMAGED:

<u>Date</u>	<u>Quantity</u>	<u>Item</u>	<u>Cost</u>	<u>Amount</u>
	4	10' NW Casing	\$ 164.00	\$ 656.00
	1	NW Casing Shoe	250.00	250.00
June 30	3	10' NW Casing	164.00	492.00
	1	NW Casing Shoe	250.00	250.00
				<hr/>
			TOTAL:	<u>\$ 17,886.50</u>

J. T. THOMAS

DIAMOND DRILLING LTD.

Box 394
Smithers, B.C.
VOJ 2N0
Phone: (804) 847-4361
Blackdome Drill A-21

Branch Office
Box 944
Timmins, Ont. P4N 7H5
Phone: (705) 297-8833
Page Three

June 16 - 30, 1990

MATERIALS USED, LOST OR DAMAGED:

<u>Date</u>	<u>Quantity</u>	<u>Item</u>	<u>Cost</u>	<u>Amount</u>
June 16	1	Lubtub	\$ 143.00	\$ 143.00
	1	NQ Bit (reaming cave)	632.00	632.00
	4	10' NW Casing	164.00	656.00
	1	NW Casing Shoe	250.00	250.00
	1	NQ Bit (reaming cave)	632.00	632.00
June 17	1	Lubtub	143.00	143.00
	1	Lubtub	143.00	143.00
	4	10' NW Casing	164.00	656.00
	2	2' NW Casing	34.00	68.00
	1	NW Casing Shoe	250.00	250.00
June 18	3	10' NW Casing	164.00	492.00
	1	NW Casing Shoe	250.00	250.00
	1	NQ Bit (reaming cave)	632.00	632.00
June 19	1	NQ Bit (reaming cave)	632.00	632.00
June 20	2	10' NW Casing	632.00	1,264.00
	1	5' NW Casing	94.00	94.00
	1	NW Casing Shoe	250.00	250.00
June 21	1	NQ Bit (reaming cave)	632.00	N/C
	2	10' NQ Rods (belled)	140.00	280.00
	1	NQ Bit (reaming cave)	632.00	632.00
	3	10' NW Casing	164.00	492.00
	1	NW Casing Shoe	250.00	250.00
June 22	2	NQ Bits (reaming cave)	632.00	1,264.00
	2	10' NQ Rods (belled)	140.00	280.00
	3	10' NW Casing	164.00	492.00
	1	NW Casing Shoe	250.00	250.00
June 23	1	NQ Bit (reaming cave)	632.00	632.00
	4	10' NW Casing	164.00	656.00
	1	5' NW Casing	94.00	94.00
	1	NW Casing Shoe	250.00	250.00
June 24	1	Lubtub	143.00	143.00
June 25	1	Lubtub	143.00	143.00
June 26	1	Lubtub	143.00	143.00
	1	NQ Bit (reaming cave)	632.00	632.00
June 27	1	Lubtub	143.00	143.00
	1	Lubtub	143.00	71.50
	4	10' NW Casing	164.00	656.00
	1	NW Casing Shoe	250.00	250.00
June 28	1	NQ Bit (reaming cave)	632.00	632.00
June 29	1	NQ Bit (reaming cave)	632.00	632.00
	1	2' NW Casing	34.00	34.00

J. T. THOMAS

DIAMOND DRILLING LTD.

Box 394
 Smithers, B.C.
 V0J 2N0
 Phone: (604) 847-4361
 Blackdome Drill A-21

June 16 - 30, 1990

Branch Office
 Timmins, Ont.
 Page Two

MAN & MACHINE HOURS:

<u>Date</u>	<u>Beaudoin</u>	<u>Anderson</u>	<u>Guay</u>	<u>Kibzey</u>	<u>Anderson</u>	<u>Drill</u>	<u>Cat</u>	<u>Acid Tests</u>
June 16	1	1½			1½		3	2
June 17	N/C	N/C	1	1	3½	1	1	1
June 18		1	N/C	N/C	3	N/C	2½	1
June 19	½	1½	1	2	3½	½		1
June 20		1½					1	
June 21	N/C	N/C		1	3½	N/C	1½	1
June 22	3	4		1	5½	1	2½	1
June 23	N/C	N/C		1	3½	N/C	3	1
June 24	2½	3½		1	1½		2	1
June 25		1			3½		3	
June 26	3½	4½	1	1		N/C	N/C	1
June 27	1½	1½	4½	4½		2½		1
June 28		1	1	2		3½		1
June 29	1½	2½				1½	1½	1
June 30	N/C	N/C	1	2	1	N/C	2	1
			N/C	N/C	3	N/C	5½	1
							2	1
	<u>13½</u>	<u>24½</u>	<u>9½</u>	<u>16½</u>	<u>33</u>	<u>11½</u>	<u>35½</u>	<u>20</u>

Total Man & Machine Hours: 108½ hours @ \$ 19.75/hour = \$ 2,142.88
 Total Cat Hours: 35½ hours @ \$ 75.00/hour = \$ 2,662.50
 Total Acid Tests: 20 tests @ \$ 39.50/test = \$ 790.00

TOTAL: \$ 5,595.38

J. T. THOMAS
DIAMOND DRILLING LTD.

Box 394
Smithers, B.C.
V0J 2N0
Phone: (604) 847-4361

Branch Office
Timmins, Ont.

TO: Blackdome Mining Corporation
Box 549
Clinton, B.C.
V0K 2K0

Invoice No.: 90-13
Invoice Date: June 25, 1990
Property: Minesite

This is our invoice for diamond drilling and other services to June 15, 1990.

DRILL: A-21

DIAMOND DRILLING: 2976 Feet	(see attached Page One)	\$ 50,889.60
MAN & MACHINE HOURS:	(see attached Page Two)	4,957.88
MATERIALS:	(see attached Page Three)	11,561.20

TOTAL: \$ 67,408.68

The above calculations are agreed to by:



Company Representative

Alan Baker

J.T. Thomas Diamond Drilling (1980) Ltd.

J. T. THOMAS
DIAMOND DRILLING LTD.

Box 394
Smithers, B.C.
VOJ 2N0
Phone: (604) 847-4381
Blackdome Drill A-21

June 6 - 15, 1990

Branch Office
Box 944
Timmins, Ont. P4N 7H6
Phone: (705) 267-8633
Page One

DIAMOND DRILLING:

<u>Hole No.</u>	<u>Date</u>	<u>Overburden</u> <u>From To</u>	<u>Coring</u> <u>From To</u>	<u>Total</u> <u>Footage</u>	<u>Rate</u>	<u>Amount</u>
737	June 6	0 - 20		20	\$ 17.10	\$ 342.
738	June 8	0 - 30	20 - 575	555	17.10	9,490.
739	June 10	0 - 30	30 - 558	528	17.10	9,028.
740	June 12	0 - 35	30 - 538	508	17.10	8,686.
741	June 13	0 - 25	35 - 397	362	17.10	6,190.
742	June 14	0 - 25	25 - 306	281	17.10	4,805.
743	June 15	0 - 20	25 - 384	359	17.10	6,138.
			20 - 218	198	17.10	3,385.
TOTAL:				2976'		\$50,889.

J. T. THOMAS
DIAMOND DRILLING LTD.

Box 394
Smithers, B.C.
VOJ 2N0
Phone: (804) 847-4361

Branch Office
Box 944
Timmins, Ont. P4N 7H5
Phone: (705) 287-8833
Page Three

Blackdome Drill A-21

June 6 - 15, 1990

MATERIALS USED, LOST OR DAMAGED:

<u>Date</u>	<u>Quantity</u>	<u>Item</u>	<u>Cost</u>	<u>Amount</u>
June 6	2	10' NW Casing	\$ 164.00	\$ 328.00
	1	NW Casing Shoe	260.00	260.00
	1	NQ Bit (reaming cave)	632.00	632.00
June 8	1	Lubtub	143.00	71.50
	1	NQ Bit (reaming cave)	632.00	632.00
	3	10' NW Casing	164.00	492.00
	1	NW Casing Shoe	260.00	260.00
June 9	2	10' NQ Rods (belled)	140.00	280.00
	1	NQ Locking Coupling	307.80	307.80
	1	NQ Adapter Coupling	171.80	171.80
		* damaged reaming in sand and gravel		
	1	Lubtub	143.00	143.00
June 11	1	Lubtub	143.00	71.50
	1	NQ Bit (reaming cave)	632.00	632.00
June 12	3	10' NW Casing	164.00	492.00
	1	5' NW Casing	94.00	94.00
	1	NW Casing Shoe	260.00	260.00
	1	NQ Bit (reaming cave)	632.00	632.00
June 13	1	NQ Bit (reaming cave)	632.00	632.00
	1	NW Casing Shoe	260.00	260.00
	5	5' NW Casing	94.00	470.00
June 14	4	5' NW Casing	94.00	470.00
	1	NW Casing Shoe	260.00	260.00
June 15	2	10' NW Casing	164.00	328.00
	1	NW Casing Shoe	260.00	260.00
	1	NQ Bit (reaming cave)	632.00	632.00
	2	Lubtub	143.00	286.00
	2	NQ Bits (reaming cave)	632.00	1,264.00
	1	NQ Reaming Shell (reaming cave)	460.00	460.00
	1	NQ Locking Coupling (reaming cave)	307.80	307.80
	1	NQ Adapter Coupling (reaming cave)	171.80	171.80

TOTAL: \$11,561.20

J. T. THOMAS

DIAMOND DRILLING LTD.

Box 394
 Smithers, B.C.
 VOJ 2N0
 Phone: (604) 847-4361
 Blackdome Drill A-21

June 6 - 15, 1990

Branch Office
 Timmins, Ont.
 Page Two

MAN & MACHINE HOURS:

<u>Date</u>	<u>Beaudoin</u>	<u>D.Anderson</u>	<u>Guay</u>	<u>Kibzey</u>	<u>N.Anderson</u>	<u>Drill</u>	<u>Cat</u>	<u>Acid Tests</u>
June 6	6	7	4	5			5	
June 7	2½	2½	2	2	7	2½	5	
June 8	3	3	2	2	3	1		1
June 9	3	3				2	1	2
June 10	2	2	2	2		1		1
June 11	3½	3½	2	2		2		1
June 12					3	3½		1
June 13			1	1	1½	1	3	1
June 14		1			2½		5½	1
June 15	1	2			3		3½	1
			3½	4½	3	1	2	1
						3½	2	1
	<u>21</u>	<u>24</u>	<u>16½</u>	<u>18½</u>	<u>24</u>	<u>22½</u>	<u>27</u>	<u>11</u>

Total Man & Machine Hours: 126½ hours @ \$ 19.75/hour = \$ 2,498.38
 Total Cat Hours: 27 hours @ \$ 75.00/hour = \$ 2,025.00
 Total Acid Tests: 11 tests @ \$ 39.50/test = \$ 434.50

TOTAL: \$ 4,957.88

Cost Detail - Trenching

Cost Detail - Reclamation

	Caterpillar 235 Backhoe Hours	Caterpillar D-8N Dozer/Ripper Hours
2050 #1/2 Vein		72.0
#18 & 19 Vein	142.5	114.0
#2 Vein		42.0
Watson Zone	81.5	84.0
Skybers Trench		12.0
South of Gate	11.5	
	-----	-----
Total	235.5	324.0

	:	:	: RECLAMATION 18 & 19 VEIN	:	:	:
	:	:	:	:	:	:
SEPT. 90	:	:	:	:	:	:
	:	:	:	:	:	:
27	:	: D8N	: RECLAMATION 19 VEIN	:	: 12.00	: L TREHEAR
28	:	: D8N	: RECLAMATION 19 VEIN	:	: 12.00	: R KUNZ
29	:	: D8N	: RECLAMATION 19 VEIN	:	: 12.00	: R KUNZ
30	:	: D8N	: RECLAMATION 19 VEIN	:	: 12.00	: R KUNZ
	:	:	:	:	:	:
OCT. 90	:	:	:	:	:	:
	:	:	:	:	:	:
1	:	: D8N	: RECLAMATION 19 VEIN	:	: 12.00	: R KUNZ
2	:	: D8N	: RECLAMATION 19 VEIN	:	: 10.00	: R KUNZ
3	:	: D8N	: RECLAMATION 19 VEIN	:	: 10.00	: R KUNZ
4	:	: D8N	: RECLAMATION 19 VEIN	:	: 10.00	: R KUNZ
	:	:	:	:	:	:
	:	:	: TOTAL HOURS	:	: 114.00	:
	:	:	:	:	:	:
	:	:	: COST PER HOUR	:	: 125.00	:
	:	:	:	:	:	:
	:	:	: RECLAMATION 18&19 VEIN	:	: 14250.00	:
	:	:	:	:	:	:
	:	:	: FUNK CONTRACTING RECLAMATION FOR 18 & 19 VEIN	:	:	:
AUG. 90	:	:	:	:	:	:
	:	:	:	:	:	:
30	:	: FUNK CONT:	: BACKFILL TRENCHES 18&19	:	: 11.50	: H FUNK
31	:	: FUNK CONT:	: BACKFILL TRENCHES 18&19	:	: 11.00	: H FUNK
SEPT. 90	:	:	:	:	:	:
	:	:	:	:	:	:
1	:	: FUNK CONT:	: BACKFILL 18 VEIN TRENCH	:	: 6.00	: H FUNK
2	:	: FUNK CONT:	: BACKFILL 18 VEIN TRENCH	:	: 11.50	: H FUNK
3	:	: FUNK CONT:	: BACKFILL 18 VEIN TRENCH	:	: 11.50	: H FUNK
4	:	: FUNK CONT:	: BACKFILL 18 VEIN TRENCH	:	: 11.50	: H FUNK
5	:	: FUNK CONT:	: BACKFILL 18 VEIN TRENCH	:	: 11.50	: H FUNK
22	:	: FUNK CONT:	: BACKFILL 18 VEIN TRENCH	:	: 11.50	: H FUNK
23	:	: FUNK CONT:	: BACKFILL 18 VEIN TRENCH	:	: 11.50	: H FUNK
24	:	: FUNK CONT:	: BACKFILL 18 VEIN TRENCH	:	: 11.50	: H FUNK
25	:	: FUNK CONT:	: BACKFILL 18 VEIN TRENCH	:	: 11.50	: H FUNK
26	:	: FUNK CONT:	: BACKFILL 18 VEIN TRENCH	:	: 11.50	: H FUNK
27	:	: FUNK CONT:	: BACKFILL 18 VEIN TRENCH	:	: 10.50	: H FUNK
	:	:	:	:	:	:
	:	:	: TOTAL HOURS	:	: 142.50	:
	:	:	:	:	:	:
	:	:	: COST PER HOUR	:	: 120.00	:
	:	:	:	:	:	:
	:	:	: CONTRACT RECLAMATION	:	: 17100.00	:
	:	:	:	:	:	:


```

SEPT. 90 :
:
14 :D8N :RECLAMATION WATSON ZONE : 12.00 :D ROSE
15 :D8N :RECLAMATION WATSON ZONE : 12.00 :D ROSE
16 :D8N :RECLAMATION WATSON ZONE : 12.00 :D ROSE
17 :D8N :RECLAMATION WATSON ZONE : 12.00 :D ROSE
18 :D8N :RECLAMATION WATSON ZONE : 12.00 :D ROSE
19 :D8N :RECLAMATION WATSON ZONE : 12.00 :D ROSE
21 :D8N :RECLAMATION WATSON ZONE : 12.00 :L TREHEAR

```

```

:
: :=====:
: :TOTAL HOURS : 84.00 :
: :
: :=====:
: :COST PER HOUR : 125.00 :
: :
: :=====:
: :RECLAMATION WATSON ZONE :10500.00 :
: :=====:

```

```

SEPT. 90 :
6 :FUNK CONT:SLOPE DUMP 1865 : 11.50 :H FUNK
7 :FUNK CONT:BACKFILL TRENCH 1865 : 12.50 :H FUNK
14 :FUNK CONT:BACKFILL TRENCH 1865 : 11.50 :H FUNK
15 :FUNK CONT:BACKFILL TRENCH 1865 : 11.50 :H FUNK
16 :FUNK CONT:BACKFILL TRENCH 1865 : 11.50 :H FUNK
17 :FUNK CONT:BACKFILL TRENCH 1865 : 11.50 :H FUNK
18 :FUNK CONT:BACKFILL TRENCH 1865 : 11.50 :H FUNK

```

```

:
: :=====:
: :TOTAL : 81.50 :
: :
: :=====:
: :COST PER HOUR : 120.00 :
: :
: :=====:
: :CONTRACT RECLAMATION WATSO: 9780.00 :
: :=====:

```


H. Funk Excavating Ltd.

180 Hwy. 33 East, Kelowna, B.C.-V1X 2A3 - Phone (604) 765-1457

NAME ~~BLACK~~ BLACK DOME MINE
 ADDRESS
 JOB P.O. #

MACHINE		OPERATOR	
<u>235 CAT HOVER</u>		<u>HENRY FUNK</u>	
TIME REQUESTED	TIME RETURNED	TIME OUT	

DATE	TYPE OF WORK	HOURS
<u>AUG. 27/90</u>	<u>SPILL WAY ON DAM</u>	<u>10</u>
<u>AUG. 28</u>	<u>TALINGS AGAINST DAM</u>	<u>11 1/2</u>
<u>AUG. 29</u>	<u>ROCK IN DRAINAGE DITCH</u>	<u>11 1/2</u>
<u>AUG. 30</u>	<u>BACKFILL TRENCHES 18 & 19</u>	<u>11 1/2</u>
<u>AUG. 31</u>	<u>BACKFILL TRENCHES 18 & 19</u>	<u>11</u>

MACHINE HOURS @ Rate Per Hr. \$ \$
 OPERATOR OVERTIME @ Rate Per Hr. \$ \$
 LABOUR HOURS @ Rate Per Hr. \$ \$ 55.5
 LIVING ALLOWANCE Per Day \$ \$
 TOTAL \$

• Payment due when invoice rendered.
 • 2% Service Charge per month will be applied on all overdue accounts.
 • The above customer shall indemnify and save harmless the owner of the rented equipment against all loss, expenses, penalties, damages and legal fees which the owner may suffer or may be required to pay for personal injuries and/or property damage.

No 1801 H. Funk
 THIS ACCOUNT IS HEREBY ACKNOWLEDGED

H. Funk Excavating Ltd.

180 Hwy. 33 East, Kelowna, B.C. V1X 2A3 · Phone (604) 765-1457

NAME BLACK DOOME MINES

ADDRESS

JOB P.O. #

MACHINE		OPERATOR
<u>235 CAT HOE</u>		<u>HENRY FUNK</u>
TIME REQUESTED	TIME RETURNED	TIME OUT

DATE	TYPE OF WORK	HOURS
<u>SEPT. 1/90</u>	<u>BACK FILL TRENCHES 18</u>	<u>6</u>
<u>SEPT. 2</u>	<u>BACK FILL TRENCHES 18</u>	<u>11 1/2</u>
<u>SEPT. 3</u>	<u>BACK FILL TRENCHES 18</u>	<u>11 1/2</u>
<u>SEPT. 4</u>	<u>BACK FILL TRENCHES 18</u>	<u>11 1/2</u>
<u>SEPT. 5</u>	<u>BACK FILL TRENCHES 18</u>	<u>11 1/2</u>

MACHINE HOURS	@ Rate Per Hr. \$	\$
OPERATOR OVERTIME	@ Rate Per Hr. \$	\$
LABOUR HOURS	@ Rate Per Hr. \$	\$
LIVING ALLOWANCE Per Day	\$	\$
TOTAL \$		

52.0

- Payment due when invoice rendered.
- 2% Service Charge per month will be applied on all overdue accounts.
- The above customer shall indemnify and save harmless the owner of the rented equipment against all loss, expenses, penalties, damages and legal fees which the owner may suffer or may be required to pay for personal injuries and/or property damage.

Nº 1802

Alfon Blomquist

THIS ACCOUNT IS HEREBY ACKNOWLEDGED

H. Funk Excavating Ltd.

180 Hwy. 33 East, Kelowna, B.C. V1X 2A3 - Phone (804) 785-1457

NAME BLACK DOME MINES

ADDRESS

JOB P.O. #

MACHINE		OPERATOR
<u>235 CAT HOE</u>		<u>HENRY FUNK</u>
TIME REQUESTED	TIME RETURNED	TIME OUT

DATE	TYPE OF WORK	HOURS
<u>SEPT. 6/90</u>	<u>SLOPE DAMP 1 PGS, BACKFILL TRENCH</u>	<u>11 1/2</u>
<u>SEPT. 7/90</u>	<u>BACKFILL TRENCH AT 1 PGS</u>	<u>12 1/2</u>

MACHINE HOURS	@ Rate Per Hr. \$	\$
OPERATOR OVERTIME	@ Rate Per Hr. \$	\$
LABOUR HOURS	@ Rate Per Hr. \$	\$ <u>24.0</u>
LIVING ALLOWANCE Per Day	\$	\$
TOTAL \$		

- Payment due when invoice rendered.
- 2% Service Charge per month will be applied on all overdue accounts.
- The above customer shall indemnify and save harmless the owner of the rented equipment against all loss, expenses, penalties, damages and legal fees which the owner may suffer or may be required to pay for personal injuries and/or property damage.

No 1803 [Signature]

THIS ACCOUNT IS HEREBY ACKNOWLEDGED

H. Funk Excavating Ltd.

180 Hwy. 33 East, Kelowna, B.C. V1X 2A3 - Phone (804) 785-1457

NAME BLACK DOME MINES

ADDRESS

JOB P.O. #

MACHINE <u>235 CAT HOE</u>		OPERATOR <u>HENRY FUNK</u>
TIME REQUESTED	TIME RETURNED	TIME OUT

DATE	TYPE OF WORK	HOURS
SEPT. 14/90	BACKFILL TRENCHES WATSON (N)	11 1/2
SEPT. 15/90	BACKFILL TRENCHES WATSON (N)	11 1/2
SEPT. 16/90	BACKFILL TRENCHES WATSON	11 1/2
SEPT. 17/90	BACKFILL TRENCHES WATSON	11 1/2
SEPT. 18/90	BACKFILL TRENCHES WATSON	11 1/2

MACHINE HOURS	@ Rate Per Hr. \$	\$
OPERATOR OVERTIME	@ Rate Per Hr. \$	\$
LABOUR HOURS	@ Rate Per Hr. \$	\$
LIVING ALLOWANCE Per Day	\$	\$
TOTAL \$		<u>57.5</u>

- Payment due when invoice rendered.
- 2% Service Charge per month will be applied on all overdue accounts.
- The above customer shall indemnify and save harmless the owner of the rented equipment against all loss, expenses, penalties, damages and legal fees which the owner may suffer or may be required to pay for personal injuries and/or property damage.

No 1806

H. Funk

THIS ACCOUNT IS HEREBY ACKNOWLEDGED

H. Funk Excavating Ltd.

180 Hwy. 33 East, Kelowna, B.C. V1X 2A3 - Phone (604) 765-1457

NAME BLACK DOME MINES

ADDRESS

JOB P.O. #

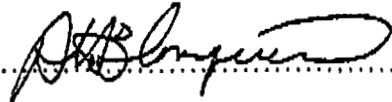
MACHINE		OPERATOR
<u>235 CAT HOE</u>		<u>HENRY FUNK</u>
TIME REQUESTED	TIME RETURNED	TIME OUT

DATE	TYPE OF WORK	HOURS
<u>SEPT. 19/90</u>	<u>BACKFILL TRENCHES</u> <small>NORTH SIDE BLACK DOME.</small>	<u>11 1/2</u>
<u>SEPT. 20/90</u>	<u>BACKFILL TRENCHES</u> <small>FAR SIDE OLD CAMP 3 TRENCHES</small>	<u>11 1/2</u>
<u>SEPT. 21/90</u>	<u>BACKFILL TRENCHES</u> <small>BELOW MAIN ACCESS</small>	<u>11 1/2</u>
<u>SEPT. 22/90</u>	<u>BACKFILL TRENCHES</u> <small>#18"</small>	<u>11 1/2</u>
<u>SEPT. 23/90</u>	<u>BACKFILL TRENCHES</u> <small>#15"</small>	<u>11 1/2</u>

MACHINE HOURS	@ Rate Per Hr. \$	\$
OPERATOR OVERTIME	@ Rate Per Hr. \$	\$
LABOUR HOURS	@ Rate Per Hr. \$	\$
LIVING ALLOWANCE Per Day	\$	\$
TOTAL \$		51.5

- Payment due when invoice rendered.
- 2% Service Charge per month will be applied on all overdue accounts.
- The above customer shall indemnify and save harmless the owner of the rented equipment against all loss, expenses, penalties, damages and legal fees which the owner may suffer or may be required to pay for personal injuries and/or property damage.

Nº 1807



THIS ACCOUNT IS HEREBY ACKNOWLEDGED

H. Funk Excavating Ltd.

180 Hwy. 33 East, Kelowna, B.C. V1X 2A3 - Phone (604) 766-1457

NAME BLACK DOME MINES

ADDRESS

JOB P.O. #

MACHINE 235 CAT NoE OPERATOR HENRY FUNK

TIME REQUESTED TIME RETURNED TIME OUT

DATE	TYPE OF WORK	HOURS
SEPT. 24/90	BACK FILL TRENCHES #18 VLEN	11 1/2
SEPT. 25/90	BACKFILL TRENCHES #18	11 1/2
SEPT. 26/90	BACKFILL TRENCHES BELOW #18	11 1/2
SEPT. 27/90	BACKFILL TRENCHES BELOW #18	10 1/2
SEPT. 28/90	BACKFILL TRENCHES #17	11 1/2

MACHINE HOURS @ Rate Per Hr. \$ \$
 OPERATOR OVERTIME @ Rate Per Hr. \$ \$
 LABOUR HOURS @ Rate Per Hr. \$ \$
 LIVING ALLOWANCE Per Day \$ \$
 TOTAL \$

- Payment due when invoice rendered.
- 2% Service Charge per month will be applied on all overdue accounts.
- The above customer shall indemnify and save harmless the owner of the rented equipment against all loss, expenses, penalties, damages and legal fees which the owner may suffer or may be required to pay for personal injuries and/or property damage.

Nº 1808

[Signature]

THIS ACCOUNT IS HEREBY ACKNOWLEDGED

H. Funk Excavating Ltd.

180 Hwy. 33 East, Kelowna, B.C. V1X 2A3 - Phone (604) 785-1457

NAME BLACK DOME MINES

ADDRESS

JOB P.O. #

MACHINE <u>235 CAT HOE</u>		OPERATOR <u>HENRY FUNK</u>
TIME REQUESTED	TIME RETURNED	TIME OUT

DATE	TYPE OF WORK	HOURS
<u>SEPT. 29/90</u>	<u>BACKFILL TRENCHES #17 + KM 27</u>	<u>10</u>
<u>SEPT. 30/90</u>	<u>BACKFILL TRENCHES KM 27</u>	<u>11 1/2</u>
<u>OCT. 1/90</u>	<u>BACKFILL TRENCHES MIDAS</u>	<u>8</u>
<u>OCT. 2/90</u>	<u>BACKFILL TRENCHES MIDAS</u>	<u>4</u>
<u>OCT. 3/90</u>	<u>BACKFILL TRENCHES MIDAS</u>	<u>12</u>

MACHINE HOURS	@ Rate Per Hr. \$	\$
OPERATOR OVERTIME	@ Rate Per Hr. \$	\$
LABOUR HOURS	@ Rate Per Hr. \$	\$
LIVING ALLOWANCE Per Day	\$	\$
TOTAL \$		\$ <u>45.5</u>

- Payment due when invoice rendered.
- 2% Service Charge per month will be applied on all overdue accounts.
- The above customer shall indemnify and save harmless the owner of the rented equipment against all loss, expenses, penalties, damages and legal fees which the owner may suffer or may be required to pay for personal injuries and/or property damage.

N^o 1810

[Signature]
THIS ACCOUNT IS HEREBY ACKNOWLEDGED

INVOICE

066948

FUNK BROS. CONTRACTING LTD.

180 HWY. 33 E.

KELOWNA, B.C. V1X 2A3

PHONE 765-1451

TO BLACKDOME MINING CORP.

P.O. Box 549

CLINTON, BC NOK 1K0

ADDRESS VIA

DATE Oct. 4 1990

ORDER NUMBER REPRESENTATIVE

TERMS P.O.B. PAYABLE ON RECEIPT

QUANTITY	DESCRIPTION	PRICE	AMOUNT
	Re: # 236 CAT HOE		
	W/O # 1801		
	W/O # 1802	55 1/2 HRS @	120.00 6660.00
	W/O # 1803	52 "	120.00 6240.00
	W/O # 1806	24 "	120.00 2880.00
	W/O # 1807	57 1/2 "	120.00 6900.00
	W/O # 1808	57 1/2 "	120.00 6900.00
	W/O # 1810	56 1/2 "	120.00 6780.00
		45 1/2 "	120.00 5460.00
			\$ 41,820.00

