

LOG NO: 21-01	RD.
ACTION:	
FILE NO:	

MAPS FOR THE
GEOLOGICAL AND GEOCHEMICAL REPORT
ON THE
ACHILLES PROPERTY
ACHILLES 1 TO 4 MINERAL CLAIMS
Skeena Mining Division, British Columbia

NTS 104B/7E
 Latitude 56°28'N
 Longitude 130°36'W

SUB-RECORDER	
RECEIVED	
JUN 17 1990	
M.R. #	\$
VANCOUVER, B.C.	

on behalf of

CANADIAN INDUSTRIAL MINERALS CORP.
 Vancouver, B.C.

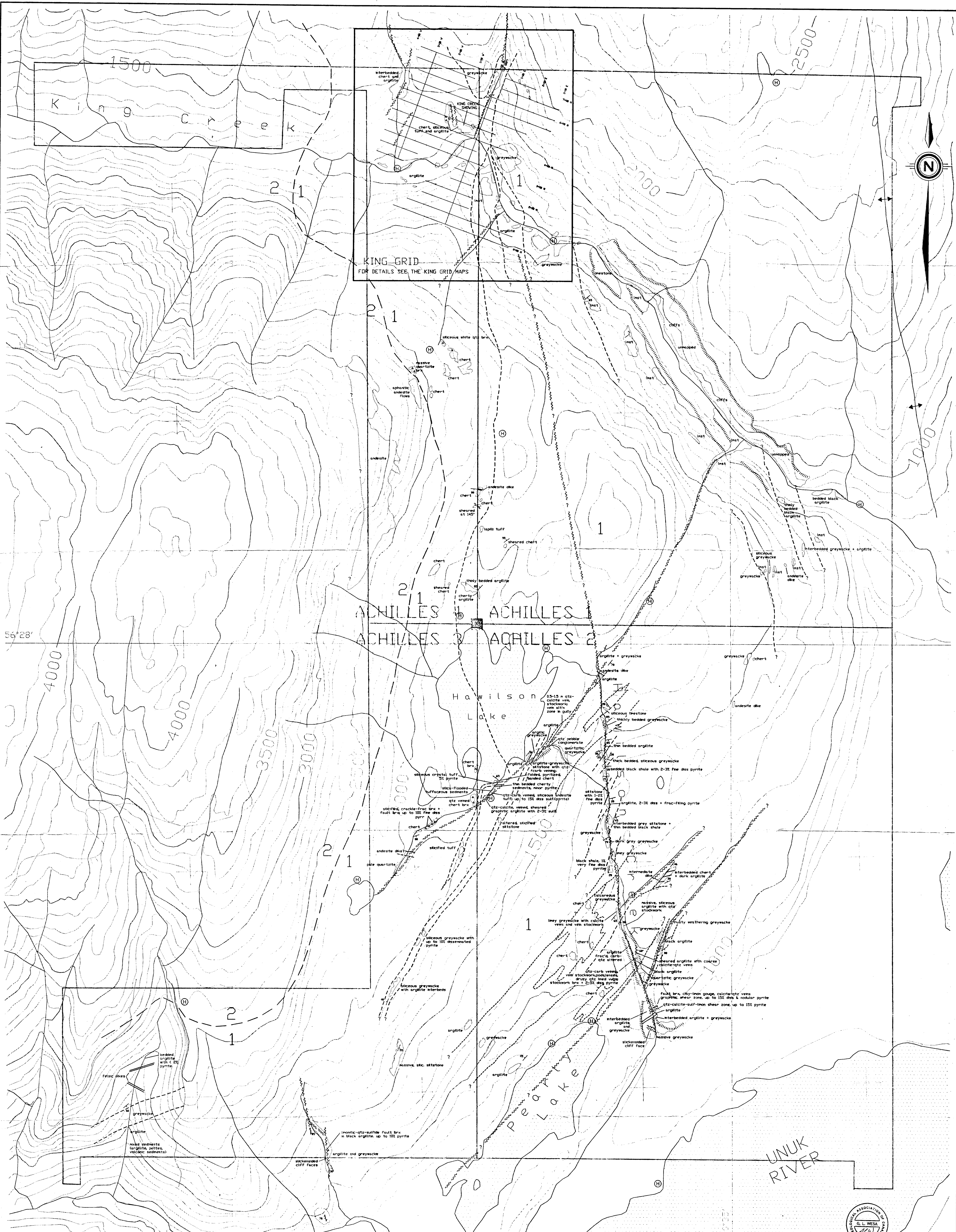
by

Gary L. Wesa, B.Sc., FGAC
KEEWATIN ENGINEERING INC.
 #800 - 900 West Hastings Street
 Vancouver, B.C.
 V6C 1E5

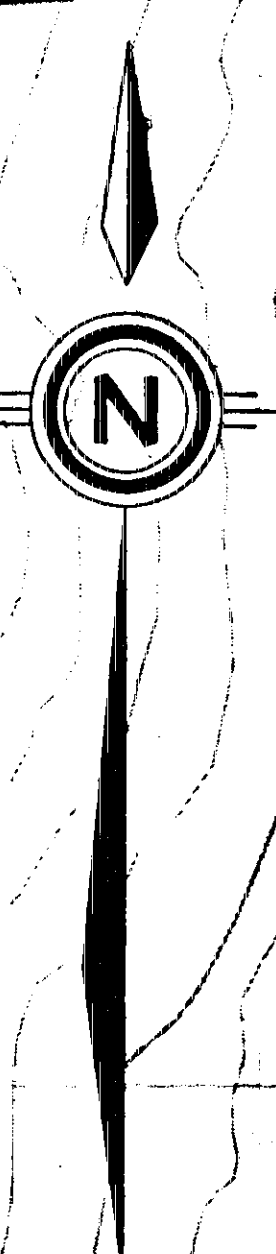
December 17, 1990

20,848

GEOLOGICAL BRANCH
 ASSESSMENT REPORT



KING GRID
FOR DETAILS SEE THE KING GRID MAPS



56°28'

GEOLOGICAL BRANCH
ASSESSMENT REPORT

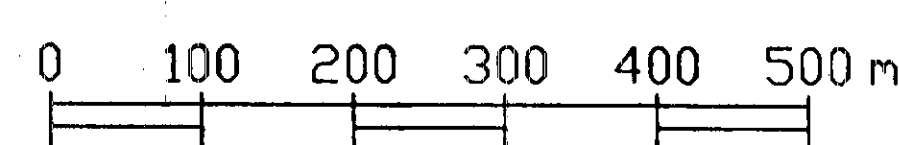
20,848

LEGEND

SYMBOLS

- UPPER TRIASSIC TO LOWER JURASSIC
- 2 Unuk River Formation andesite sequence, green and grey intermediate to mafic volcanics and flows, with locally thick interbeds of fine-grained lacustrine sediments, minor conglomerates, and limestone.
- UPPER TRIASSIC
- 1 Stuhni Group brown, black, grey mixed sedimentary rocks (siltstone, shale, argillite, limestone, chert, greywacke), with minor mafic to intermediate volcanics and volcanoclastic rocks.

- Outcrop
- Geological boundary (approximate)
- Lithological contact (observed, approximate, assumed)
- - - Bedding (inclined, vertical)
- ↗ Overturned bedding
- ~ Minor Fold (arrow indicates plunge)
- ~ Fault
- ↘ Shearing (with dip)
- ≡ Dyke, Ven
- ⊕ Joint
- ⊕ Regional anticline
- ⊕ Foliation
- ⊕ Brecciation
- ||| Cliff or steep gully wall
- ⊕ Helpad



part 2 of 2

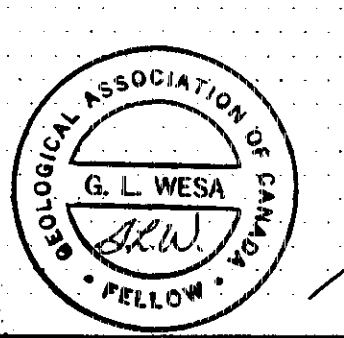
CANADIAN INDUSTRIAL MINERALS CORP.

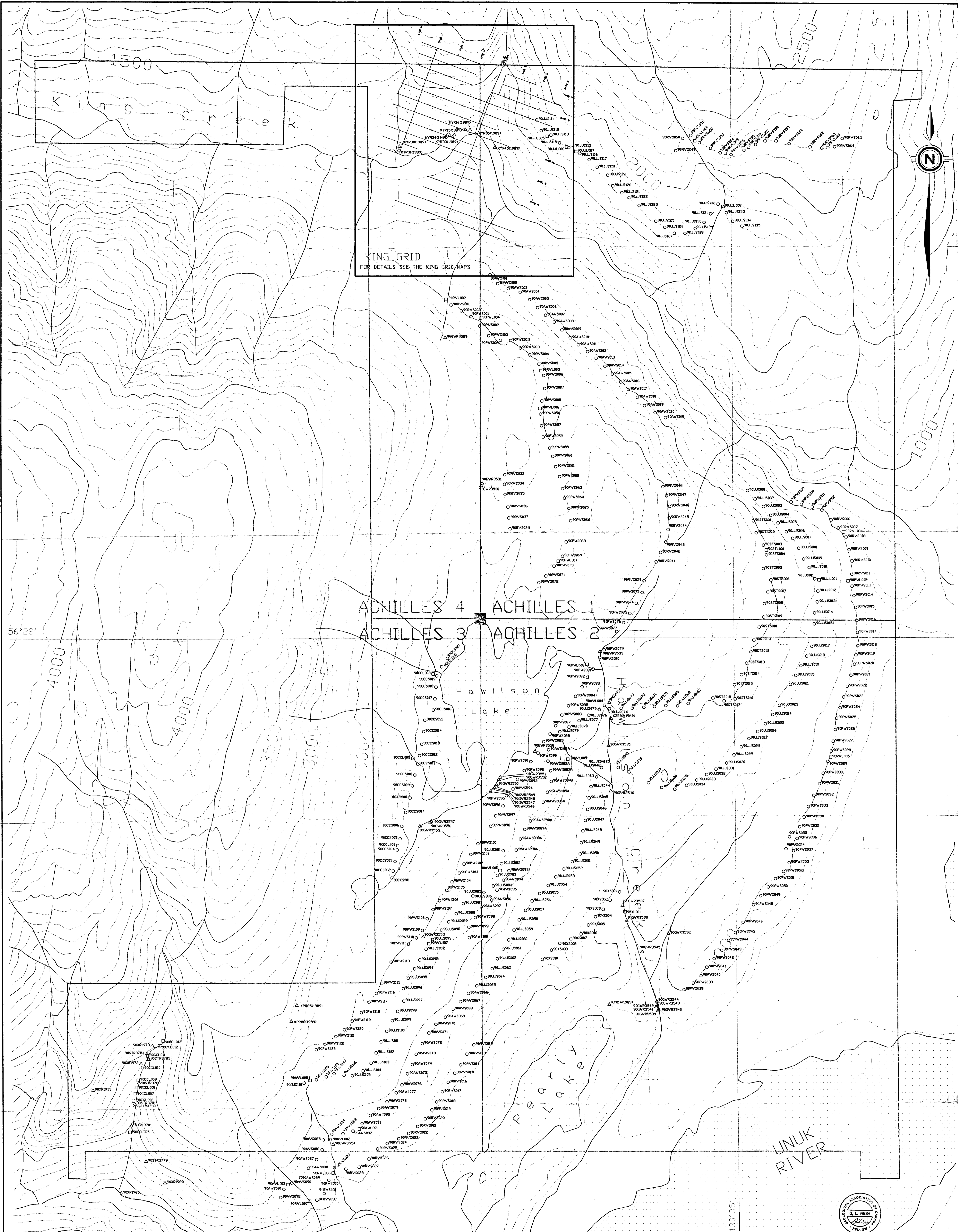
ACHILLES PROJECT

GEOLOGY

DATE: NOV. 1990 NTS: 104B/7E
PROJECT: ACHILLES BY: G.L. Wesa
SCALE: 1:5,000

Keewatin Engineering Inc. MAP No. (1)





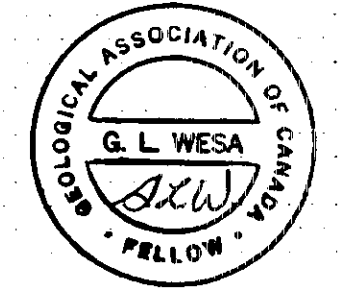
KING GRID
FOR DETAILS SEE THE KING GRID MAPS

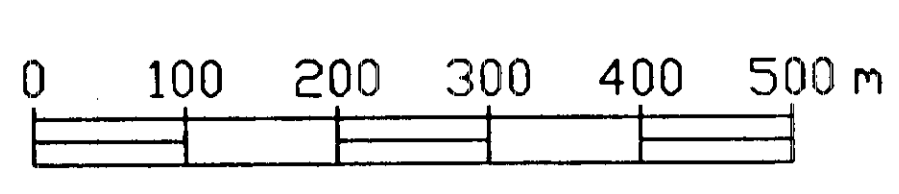
ACHILLES 4 ACHILLES 1
ACHILLES 3 ACHILLES 2

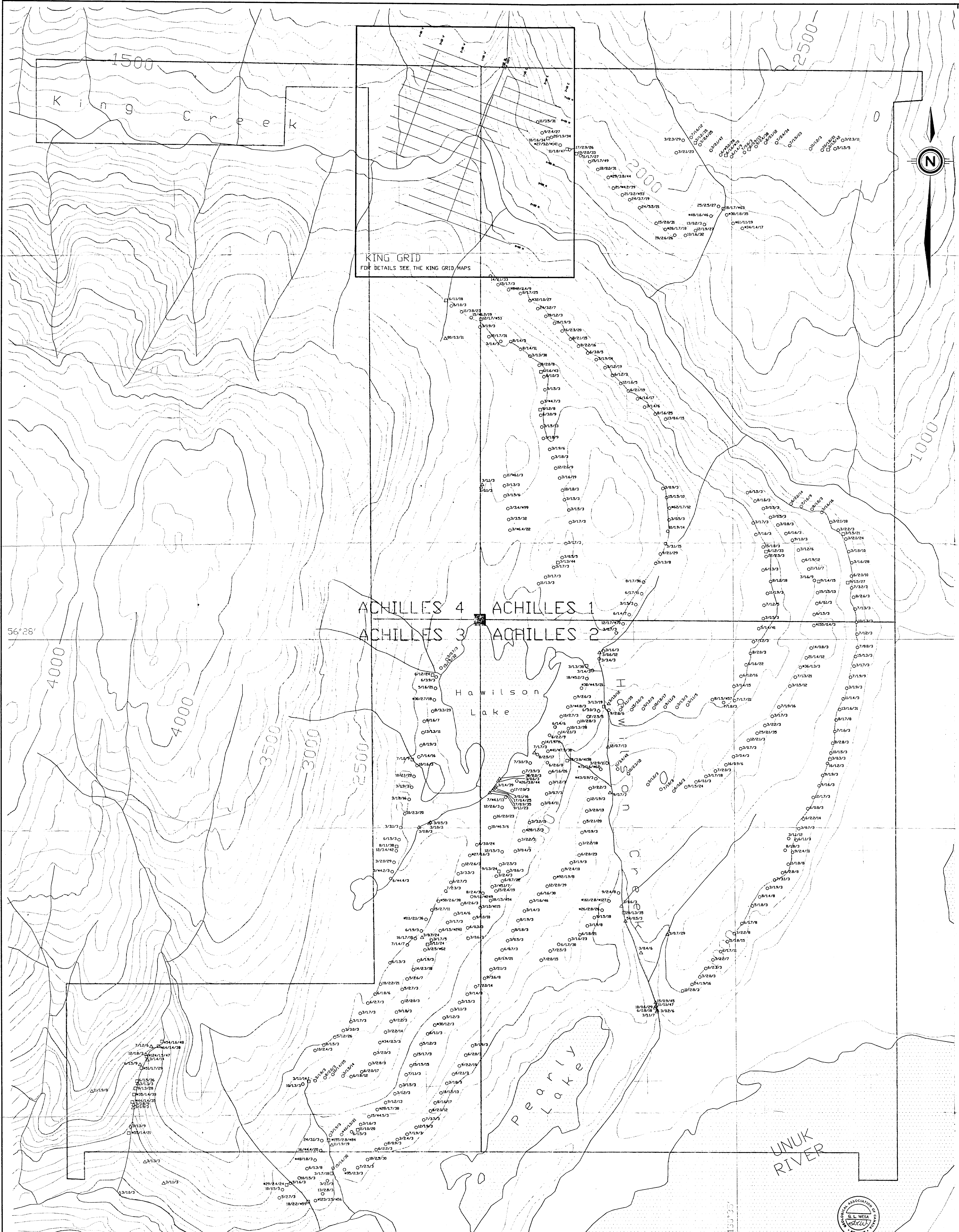
GEOLOGICAL BRANCH
 ASSESSMENT REPORT
20,848

Legend

- Soil sample
- Silt sample
- △ Rock sample
- ◊ Rock Float sample
- 90PWS038 Sample number

	
CANADIAN INDUSTRIAL MINERALS CORP.	
ACHILLES PROJECT	
GEOCHEMISTRY SAMPLE NUMBERS	
DATE: NOV. 1990	NTS: 104B/7E
PROJECT: ACHILLES	By: G.L. Wesa
SCALE: 1:5,000	
Keewatin Engineering Inc. MAP No. (2)	





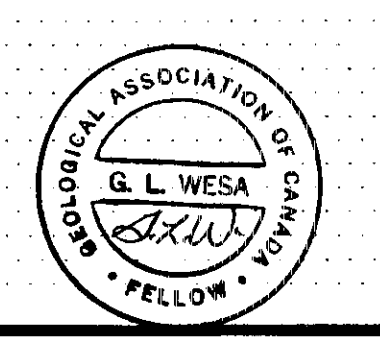
KING GRID
FOR DETAILS SEE THE KING GRID MAPS

ACHILLES 4 ACHILLES 1
ACHILLES 3 ACHILLES 2

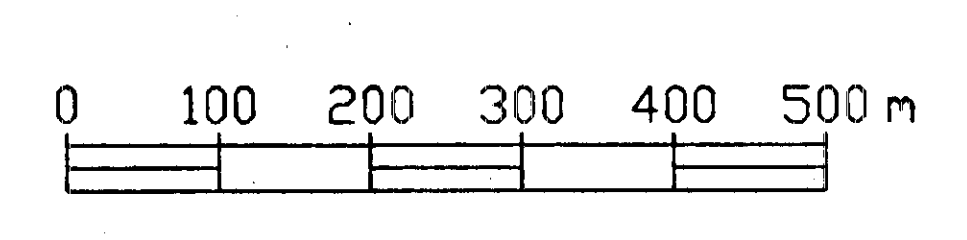
GEOLOGICAL BRANCH
 ASSESSMENT REPORT
20,848

Legend

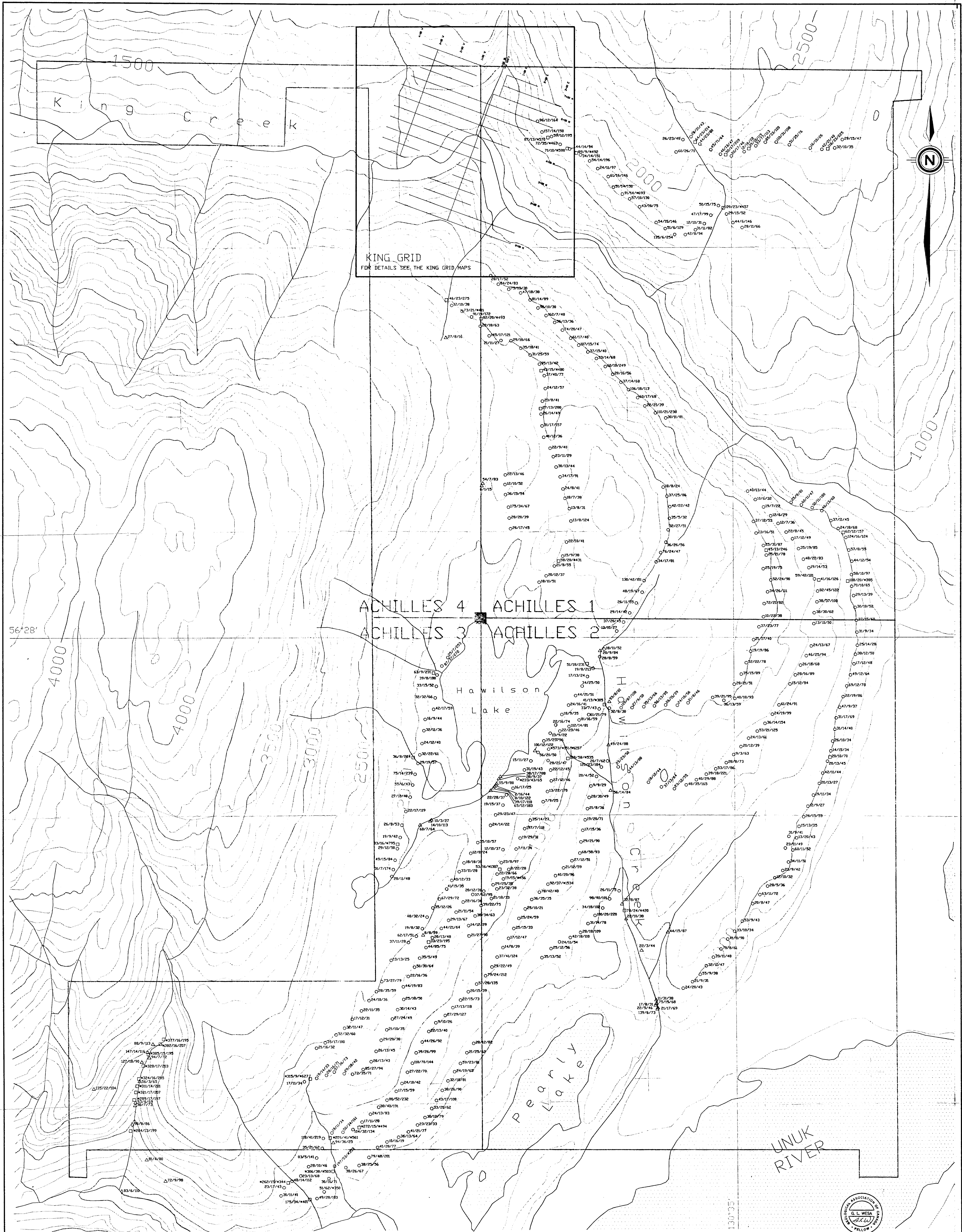
- Soil sample
- Silt sample
- △ Rock sample
- ◊ Rock float sample
- 10/16/18 Au(ppb)/Ag(ppm)/As(ppm)
- *25/*4.0/*50 Threshold of anomalous values used for soil and silt samples



CANADIAN INDUSTRIAL MINERALS CORP.	
ACHILLES PROJECT	
GEOCHEMISTRY (Au/Ag/As)	
DATE: NOV. 1990	NTS: 104B/7E
PROJECT: ACHILLES	BY: G.L. Wesa
SCALE: 1:5000	
Keewatin Engineering Inc. MAP No. 3	



NOTE: Values below the detection limit are plotted as one-half the detection limit.



KING_GRID
FOR DETAILS SEE THE KING GRID MAPS

ACHILLES 4 ACHILLES 1
ACHILLES 3 ACHILLES 2

Hawilson
Lake

PEARLY
LAKE

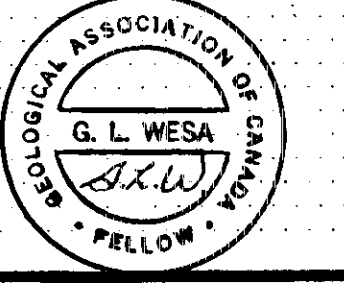
UNUK
RIVER

Legend

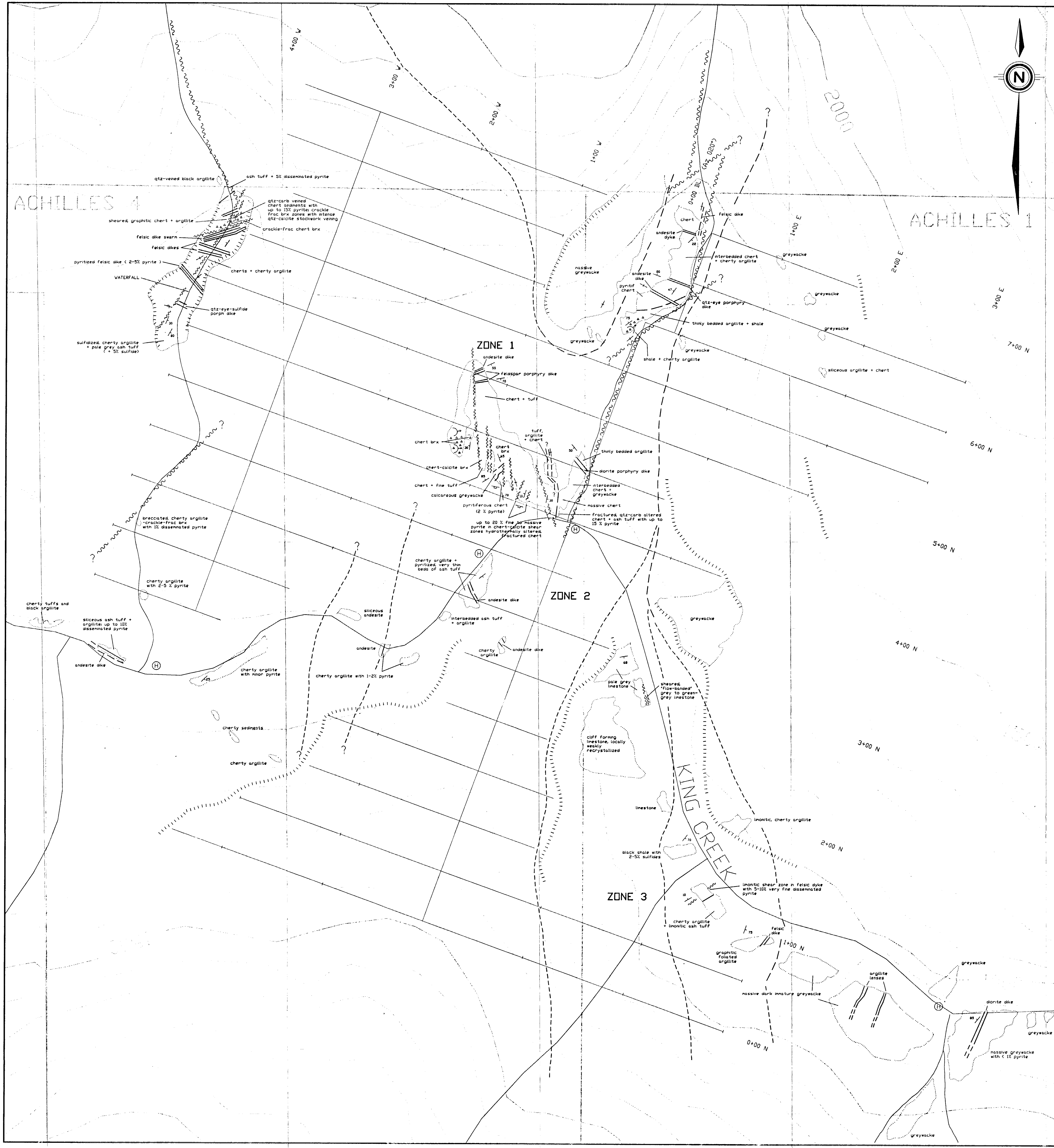
- Soil sample
 - Silt sample
 - △ Rock sample
 - ◇ Rock float sample
- 75/25/275 Cu(ppm)/Pb(ppm)/Zn(ppm)
 *200/100/300 Threshold of anomalous values used for soil and silt samples

GEOTECHNICAL BRANCH
 ASSESSMENT REPORT
20,848

NOTE: Values below the detection limit are plotted as one-half the detection limit.



CANADIAN INDUSTRIAL MINERALS CORP.	
ACHILLES PROJECT	
GEOCHEMISTRY (Cu/Pb/Zn)	
DATE: NOV. 1990	NTS: 104B/7E
PROJECT: ACHILLES	By: G.L. Wesa
SCALE: 1:5,000	
Keewatin Engineering Inc. MAP No. 4	



LEGEND

- UPPER TRIASSIC TO LOWER JURASSIC
- 2 Unuk River Formation: andesite sequence, green and grey intermediate to mafic volcanoclastics and flows, with locally thick interbeds of fine-grained immature sediments, minor conglomerates, and limestone.
- UPPER TRIASSIC
- 1 Stuhni Group: brown, black, grey mixed sedimentary rocks (siltstone, shale, argillite, limestone, chert), with minor mafic to intermediate volcanics and volcanoclastic rocks.

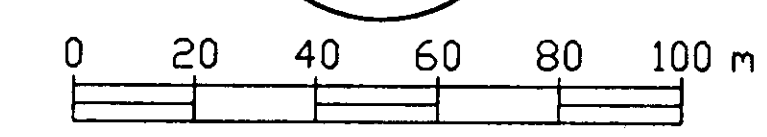
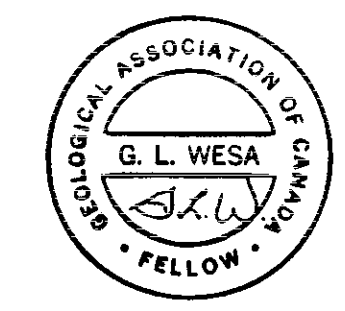
SYMBOLS

- Outcrop
- Lithological contact (approx. assumed)
- Bedding (inclined, vertical)
- ~ Overturned bedding
- ~ Minor fold (arrow indicates plunge)
- ~ Fault
- ~ Shearing (with dip)
- == Dyke, Vein
- ⊥ Joint
- ⊕ Regional anticline
- ⊖ Gossan
- ▲▲ Brecciation
- ||| Cliff or steep gully wall
- Ⓜ Helpad

GEOLOGICAL BRANCH ASSESSMENT REPORT

20,848

NOTE: The King Grid covers an assemblage of sedimentary and volcanoclastic rocks belonging to the Upper Triassic Stuhni Group (Unit 1).



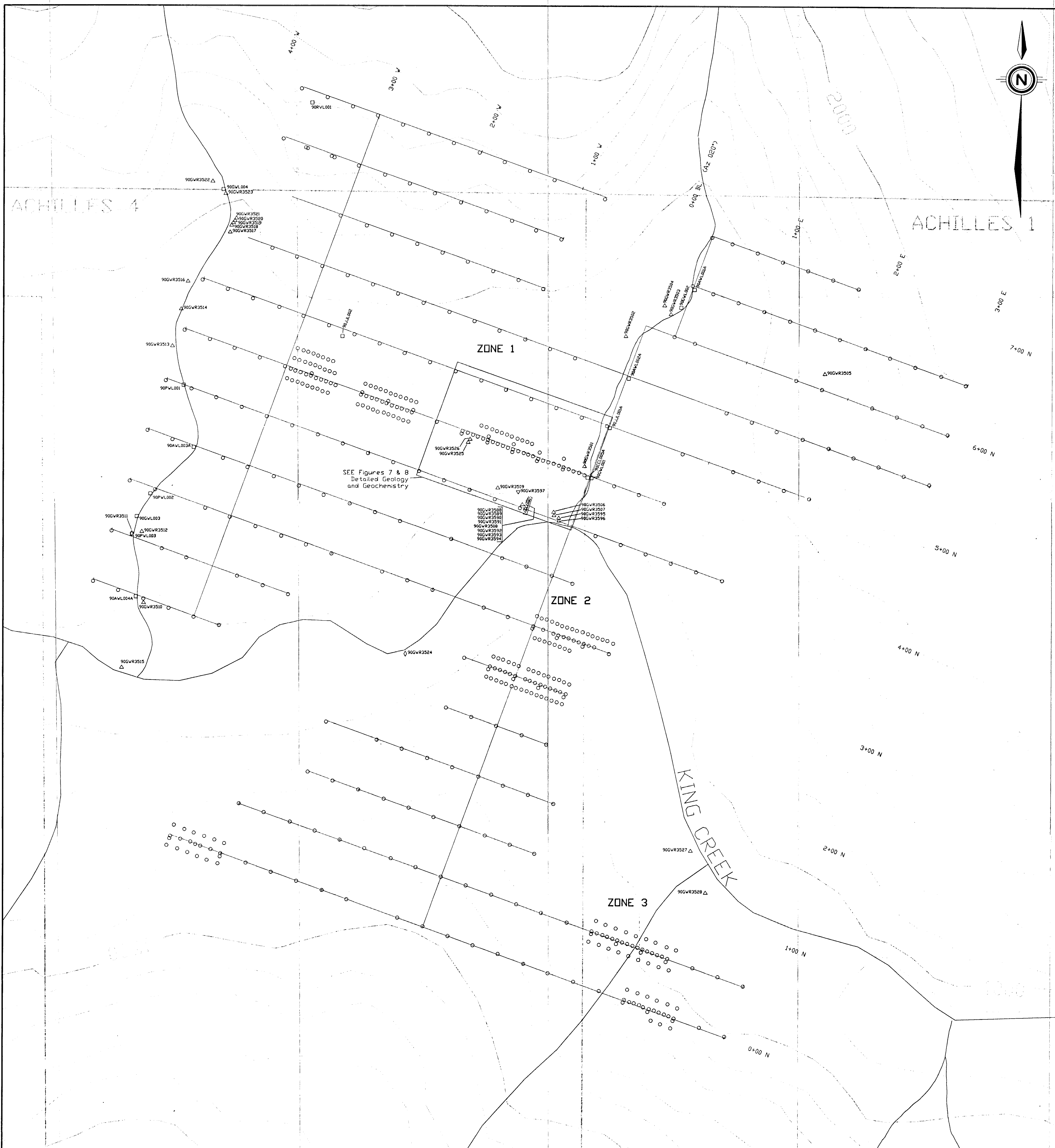
CANADIAN INDUSTRIAL MINERALS CORP.

ACHILLES PROJECT - KING GRID

GEOLOGY

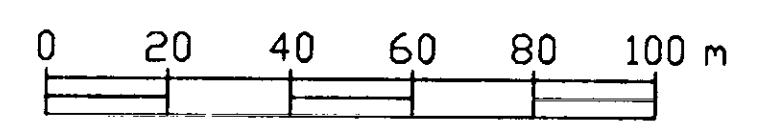
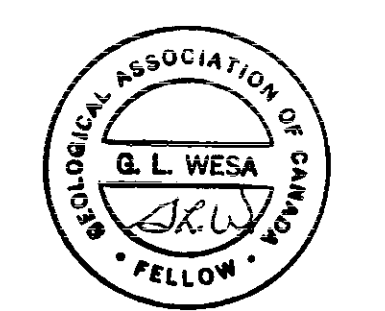
DATE: NOV. 1990	NTS: 104B/7E
PROJECT: ACHILLES	BY: G.L. Wesa
SCALE: 1:1250	

Keewatin Engineering Inc. MAP No. (5)

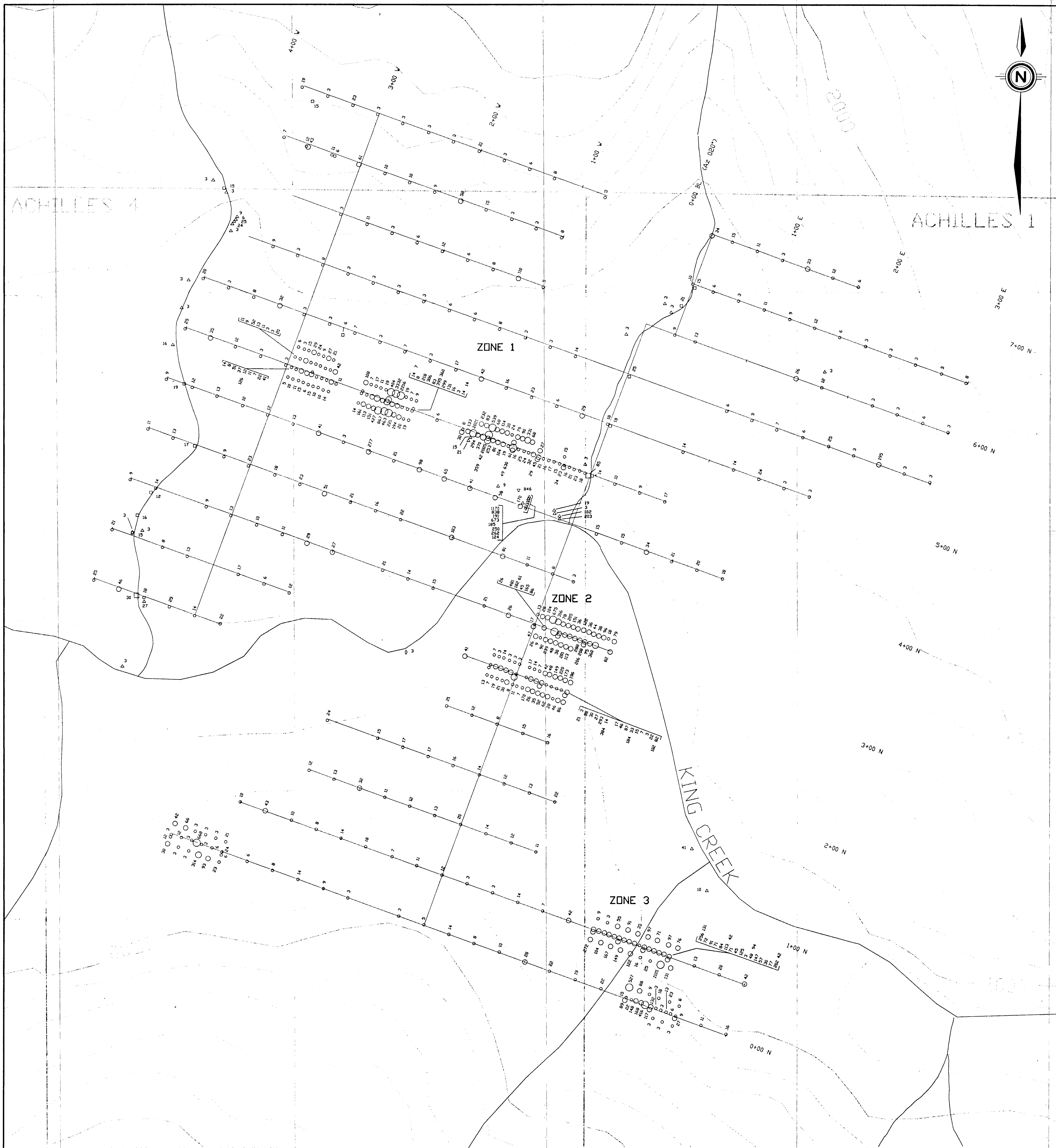


GEOLOGICAL BRANCH
ASSESSMENT REPORT
20,848

- Legend**
- Soil sample
 - Silt sample
 - △ Rock sample
 - ▽ Rock chip sample
 - ◇ Rock float sample
 - 90AWL004 Sample number



CANADIAN INDUSTRIAL MINERALS CORP.	
ACHILLES PROJECT - KING GRID	
SAMPLE LOCATIONS	
DATE: NOV. 1990	NTS: 1048/7E
PROJECT: ACHILLES	BY: G.L. Wesa
SCALE: 1:250	
Keewatin Engineering Inc. MAP No. (6)	



**GEOLOGICAL BRANCH
ASSESSMENT REPORT**

20,848

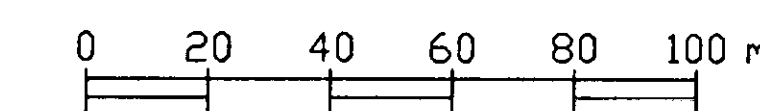
Legend

- Soil sample
- Silt sample
- △ Rock sample
- ▽ Rock chip sample
- ◇ Rock float sample
- 15 Au(ppb)

For soil and silt samples

- Au(ppb)
- ≤ 25
- 26 - 300
- 301 - 400
- > 400

NOTE: Values below the detection limit are plotted as one-half the detection limit.



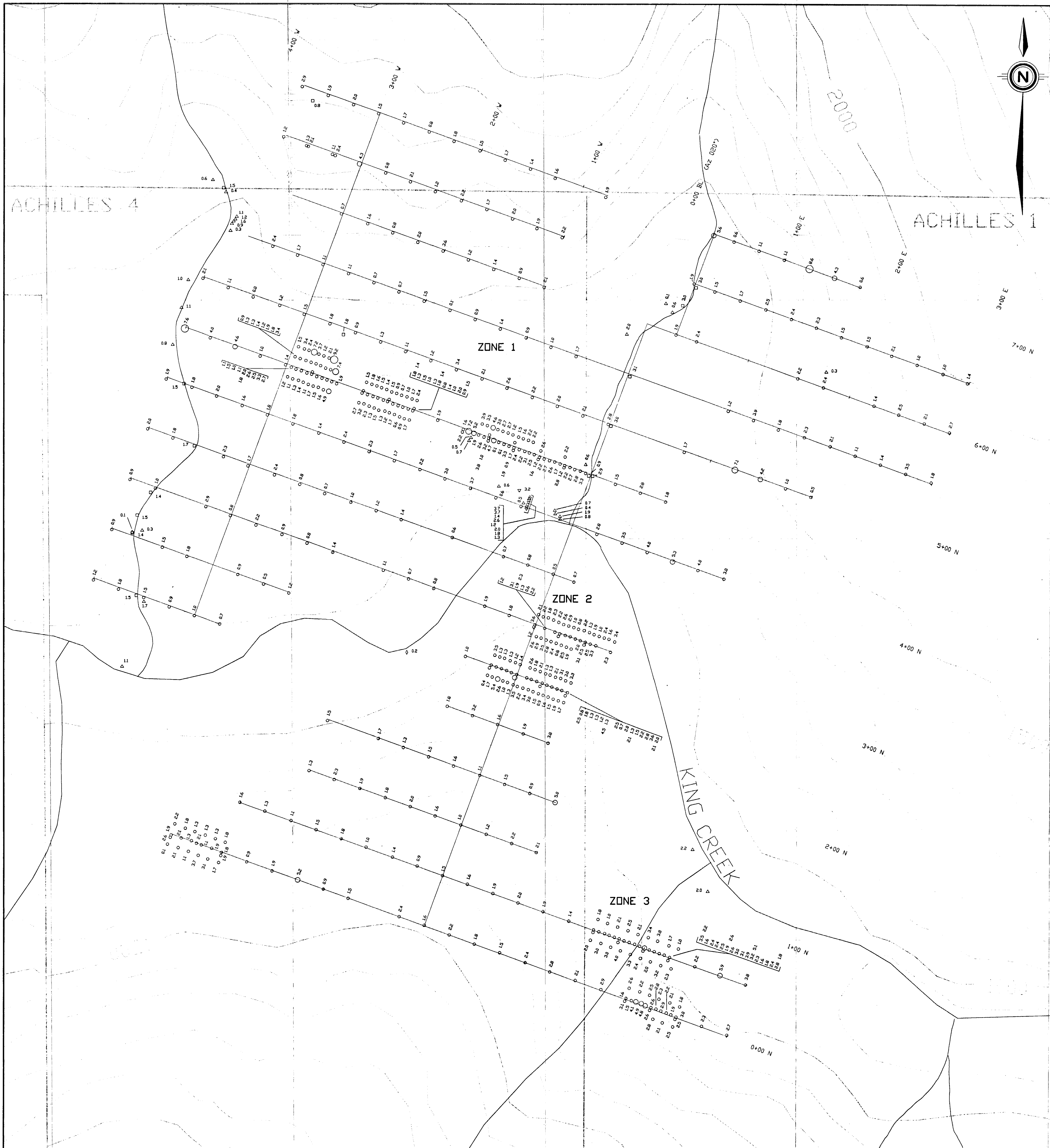
CANADIAN INDUSTRIAL MINERALS CORP.

ACHILLES PROJECT - KING GRID

GEOCHEMISTRY

(Au)

DATE: NOV. 1990	NTS: 1048/7E
PROJECT: ACHILLES	BY: G.L. Wesa
SCALE: 1:250	
Keewatin Engineering Inc.	MAP No. 7



**GEOLOGICAL BRANCH
ASSESSMENT REPORT**

20,848

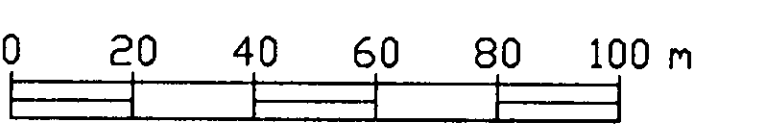
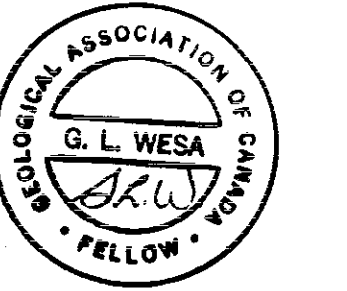
Legend

- Soil sample
- Silt sample
- △ Rock sample
- ▽ Rock chip sample
- ◇ Rock float sample
- 3.5 Ag(ppm)

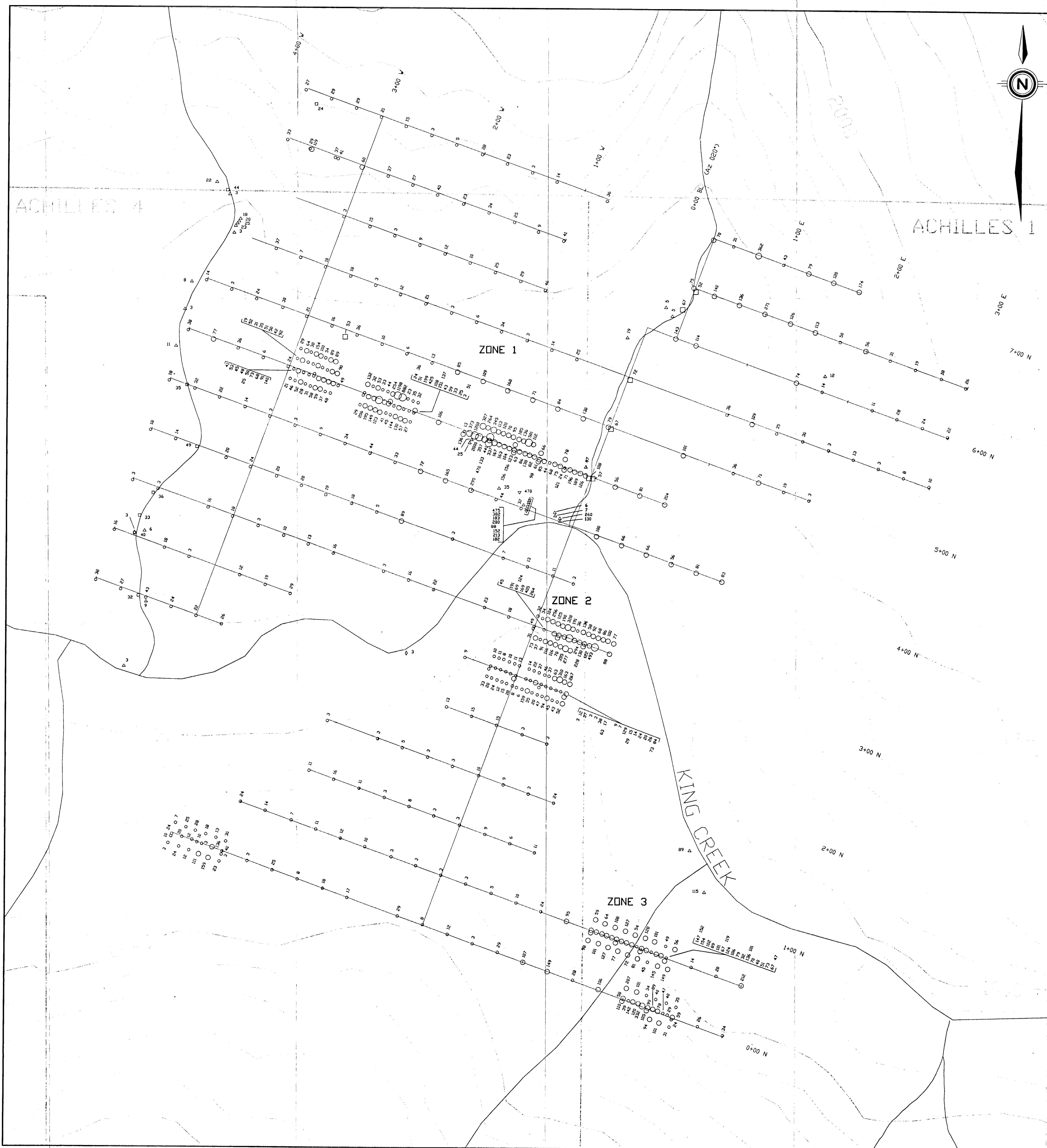
For soil and silt samples
Ag(ppm)

- ≤ 4.0
- 4.1 - 6.0
- 6.1 - 7.5
- > 7.5

NOTE: Values below the detection limit
are plotted as one-half the
detection limit.



CANADIAN INDUSTRIAL MINERALS CORP.	
ACHILLES PROJECT - KING GRID	
GEOCHEMISTRY	
(Ag)	
DATE: NOV. 1990	NTS: 104B/7E
PROJECT: ACHILLES	BY: G.L. Wesa
SCALE: 1:1250	
Keewatin Engineering Inc. MAP No. 8	



**GEOLOGICAL BRANCH
ASSESSMENT REPORT**

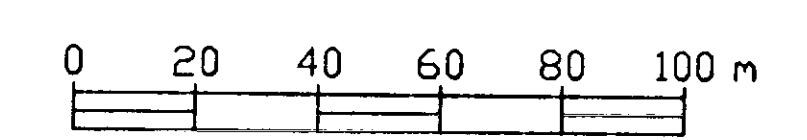
20,848

Legend

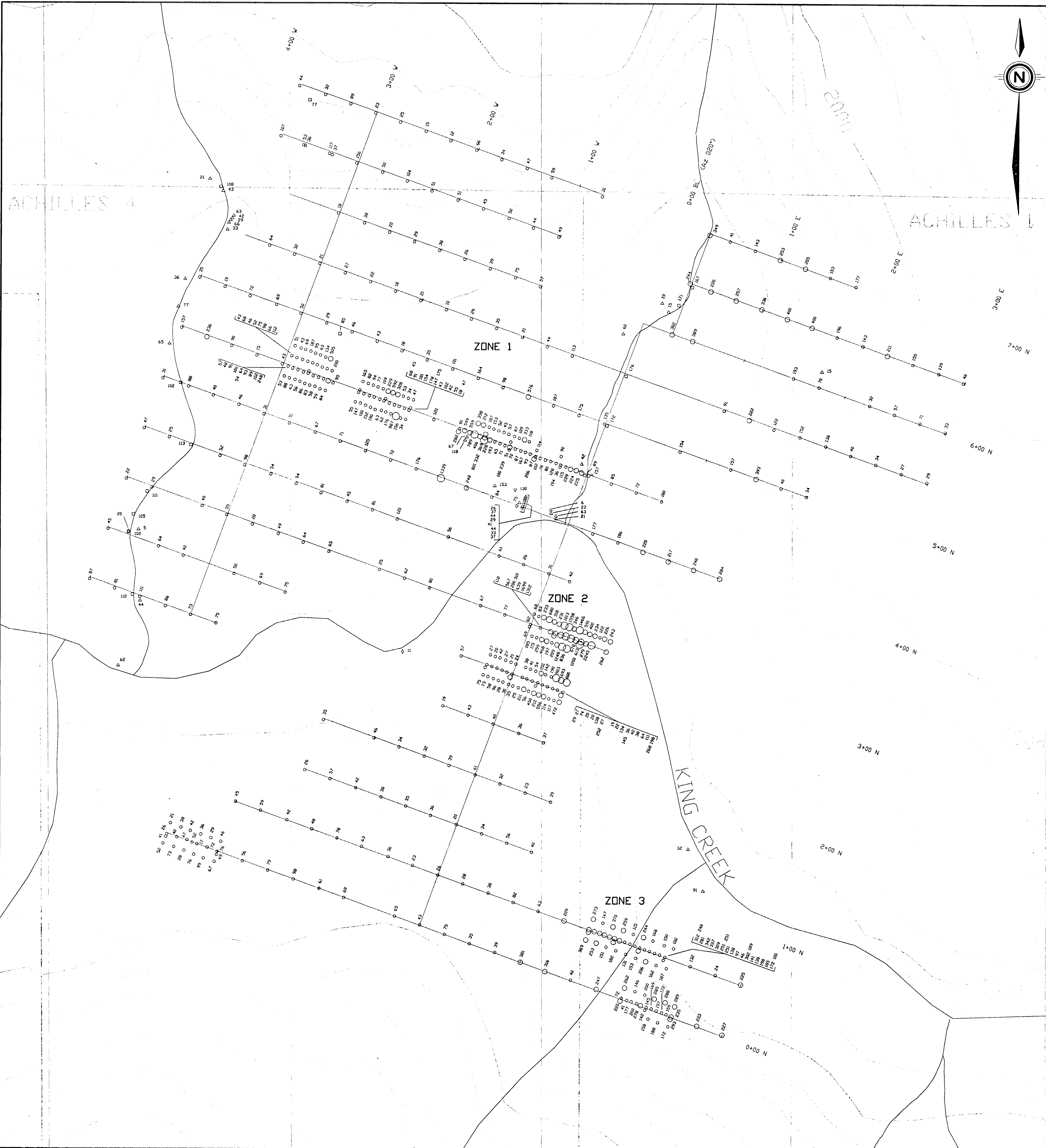
- Soil sample
- Silt sample
- △ Rock sample
- ▽ Rock chip sample
- ◇ Rock float sample
- 57 As(ppm)

- For soil and silt samples
As(ppm)
- ≤ 50
- 51 - 300
- 301 - 400
- > 400

NOTE: Values below the detection limit are plotted as one-half the detection limit.



CANADIAN INDUSTRIAL MINERALS CORP.	
ACHILLES PROJECT - KING GRID	
GEOCHEMISTRY	
(As)	
DATE: NOV. 1990	NTS: 1048/7E
PROJECT: ACHILLES	BY: G.L. Wesa
SCALE: 1:1250	
Keewatin Engineering Inc. MAP No. (9)	



Legend

- Soil sample
- Silt sample
- △ Rock sample
- ▽ Rock chip sample
- ◇ Rock float sample
- 95 Cu(ppm)

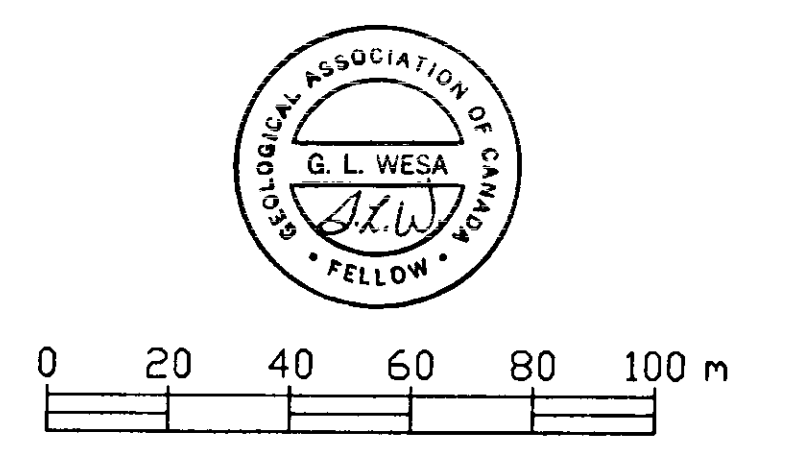
For soil and silt samples

- Cu(ppm)
- ≤ 200
- 201 - 600
- 601 - 750
- > 750

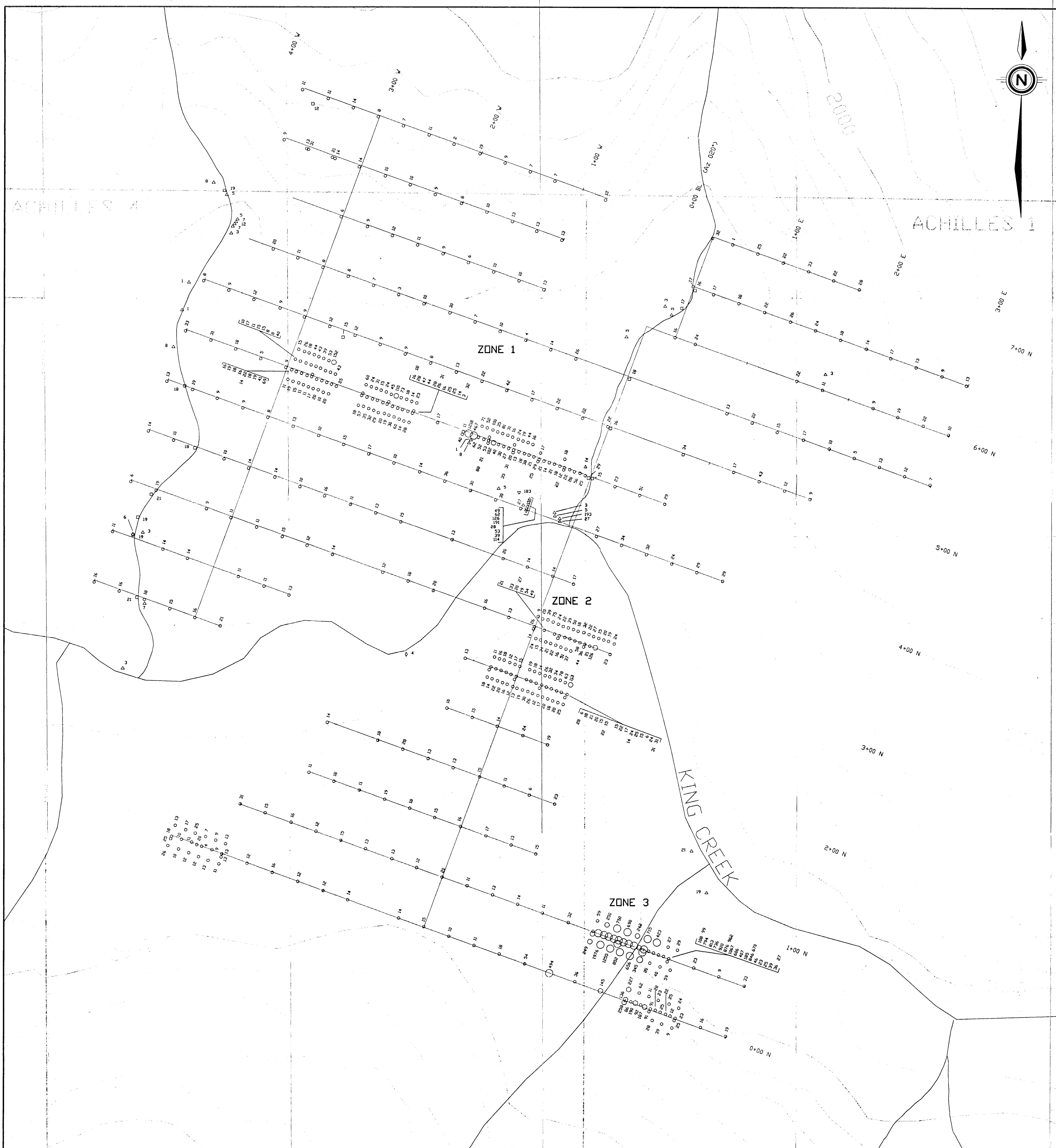
**GEOLOGICAL BRANCH
ASSESSMENT REPORT**

20,848

NOTE: Values below the detection limit are plotted as one-half the detection limit.



CANADIAN INDUSTRIAL MINERALS CORP.	
ACHILLES PROJECT - KING GRID	
GEOCHEMISTRY	
(Cu)	
DATE: NOV. 1990	NTS: 1048/7E
PROJECT: ACHILLES	BY: G.L. Wesa
SCALE: 1:1250	
Keewatin Engineering Inc.	MAP No. 10



GEOLOGICAL BRANCH
ASSESSMENT REPORT

20,848

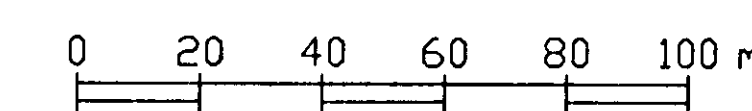
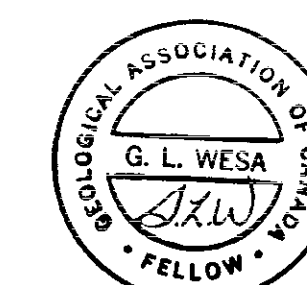
Legend

- Soil sample
- Silt sample
- △ Rock sample
- ▽ Rock chip sample
- ◇ Rock float sample
- 56 Pb(ppm)

For soil and silt samples

- Pb(ppm)
- ≤ 100
- 101 - 300
- 301 - 400
- > 400

NOTE: Values below the detection limit are plotted as one-half the detection limit.



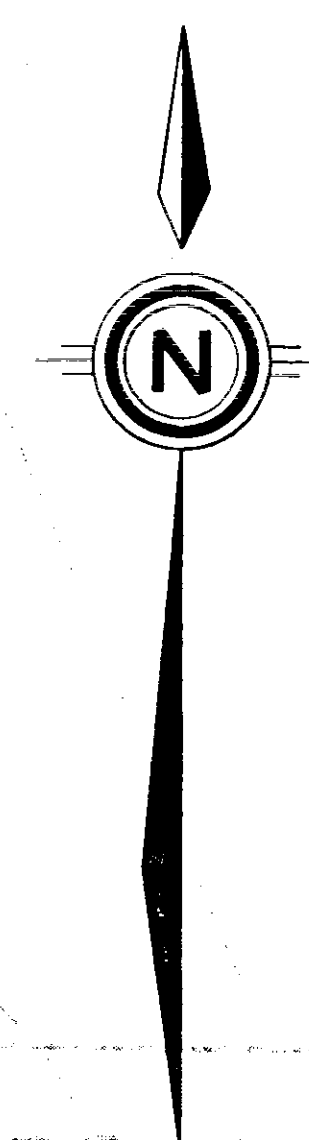
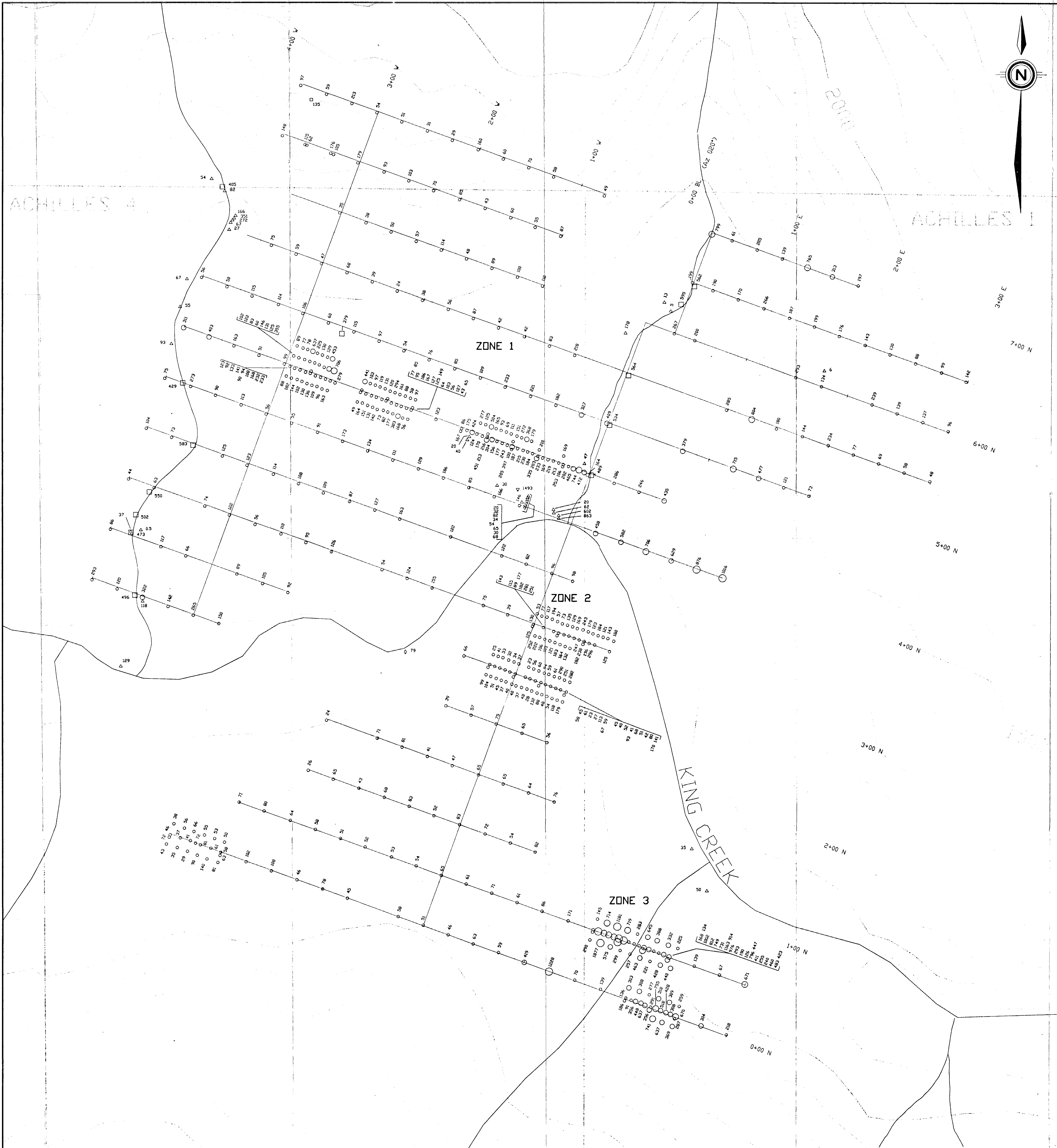
CANADIAN INDUSTRIAL MINERALS CORP.

ACHILLES PROJECT - KING GRID

GEOCHEMISTRY

(Pb)

DATE: NOV. 1990	NTS: 1048/7E
PROJECT: ACHILLES	BY: G.L. Wesa
SCALE: 1:250	
Keewatin Engineering Inc.	MAP No. (11)



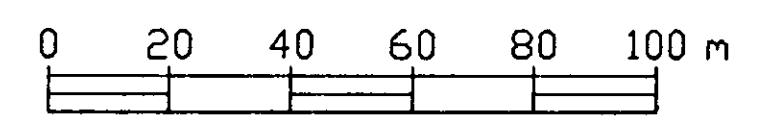
**GEOLOGICAL BRANCH
ASSESSMENT REPORT**

20,848

Legend

- Soil sample
 - Silt sample
 - △ Rock sample
 - ▽ Rock chip sample
 - ◇ Rock float sample
 - 225 Zn(ppm)
- For soil and silt samples
Zn(ppm)
- ≤ 300
 - 301 - 650
 - 651 - 850
 - > 850

NOTE: Values below the detection limit are plotted as one-half the detection limit.



part 2 of 2

CANADIAN INDUSTRIAL MINERALS CORP.

ACHILLES PROJECT - KING GRID

GEOCHEMISTRY

(Zn)

DATE: NOV. 1990	NTS: 104B/7E
PROJECT: ACHILLES	BY: G.L. Wesa
SCALE: 1:250	
Keewatin Engineering Inc.	MAP No. 12