



3883 NASHUA DRIVE,
MISSISSAUGA, ONTARIO L4V 1R3
TELEPHONE: (416) 671-2446

REPORT AND MAPS
GOLDEN RULE RESOURCES LTD.
NATIONAL RIVER PROJECT
MILL CLAIMS, BRITISH COLUMBIA

Airborne Geophysics

J#9030



- LEGEND**
- PLEISTOCENE**
OUTWASH DEPOSITS
 of
 gl. Glacioluvial stratified sand and gravel
 of gl. Stratified sand (minor silt)
- TILLS**
 III 2 Loose, sandy matrixwide variety of clast lithologies (ablation till ?)
 III 1 Compact, clay matrix, clasts small, angular all local (lodgement till ?)
- OTHER**
 res Residual soil
 org Organic
 K Kettle hole
- Profound Unconformity -----
- TERTIARY (Ootsa Lake Volcanics ?)**
 L Trachyte (field term only) light brown-grey; sparse feldspar phenocrysts; massive
 (Probably Not in Contact)
- TRIASSIC TO JURASSIC (Takla Group)**
- VOLCANIC ROCKS**
 A Andesite; medium green; Ap pyroxene phenocrysts
 B Basalt; Bp - pyroxene phenocrysts; plag - plagioclase; ol - olivine; tt - tuff
- VOLCANICLASTIC ROCKS**
 F Breccia flows; flow upward from blocks > 1m, to ash beds at top
- SEDIMENTARY ROCKS (Takla Group ? or Older ?)**
 Sa Bedded chert, tuff, siltstone; massive limestone
 St Siltstone
- INTRUSIVE ROCKS**
 I Bp - biotite porphyry
- SYMBOLS**
- Alteration and Vein Minerals:**
 py pyrite op epidote
 cc calcite qz quartz
- o Geological station (keyed to field notes)
 7450 Rock sample and number (Au ppb, Cu ppm)
 Bedrock outcrop
 Overburden contact
 Strike and dip of bedding
 Claim post located in field
 LCP Legal corner post
 Claim line seen in field
 Claim boundary (approximate)
 Road
 Possible line interpreted from aeromagnetic data

20859

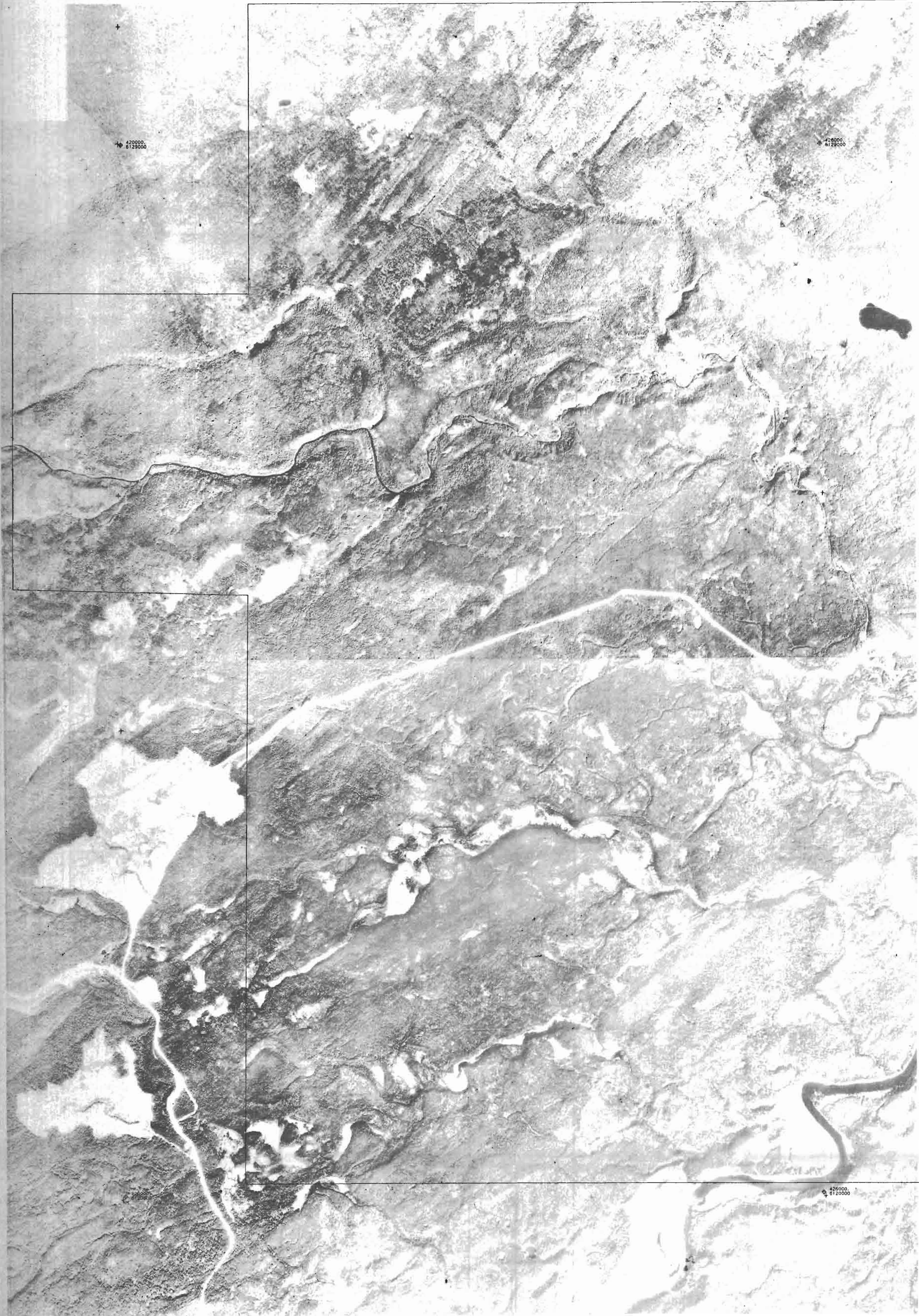
GOLDEN RULE RESOURCES LTD.

**NATION RIVER PROJECT
 MILL CLAIMS**

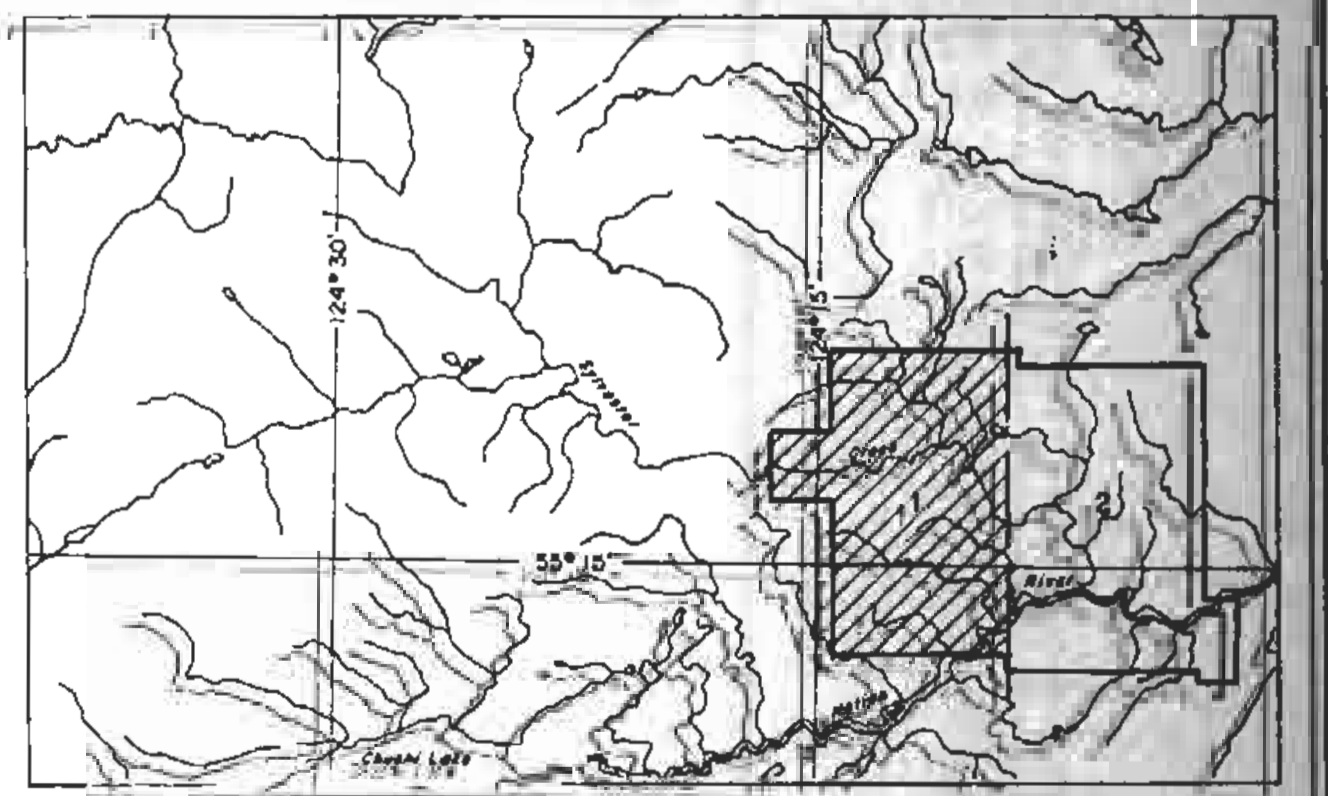
**GEOLOGY MAP
 WEST HALF**

Date: DECEMBER 1990	Map No: 20859
Revised:	Figure #
Scale: 1:100,000	

E420000 E421000 E422000 E423000 E424000 E425000 E426000 E427000

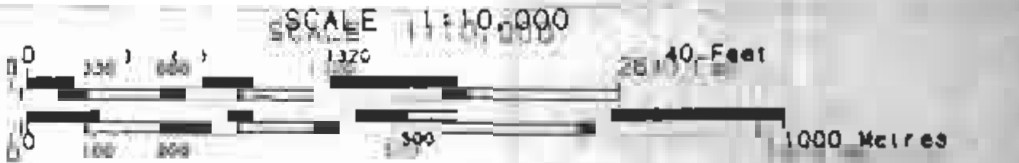


GEOLOGICAL BRANCH
ASSESSMENT REPORT
20,859

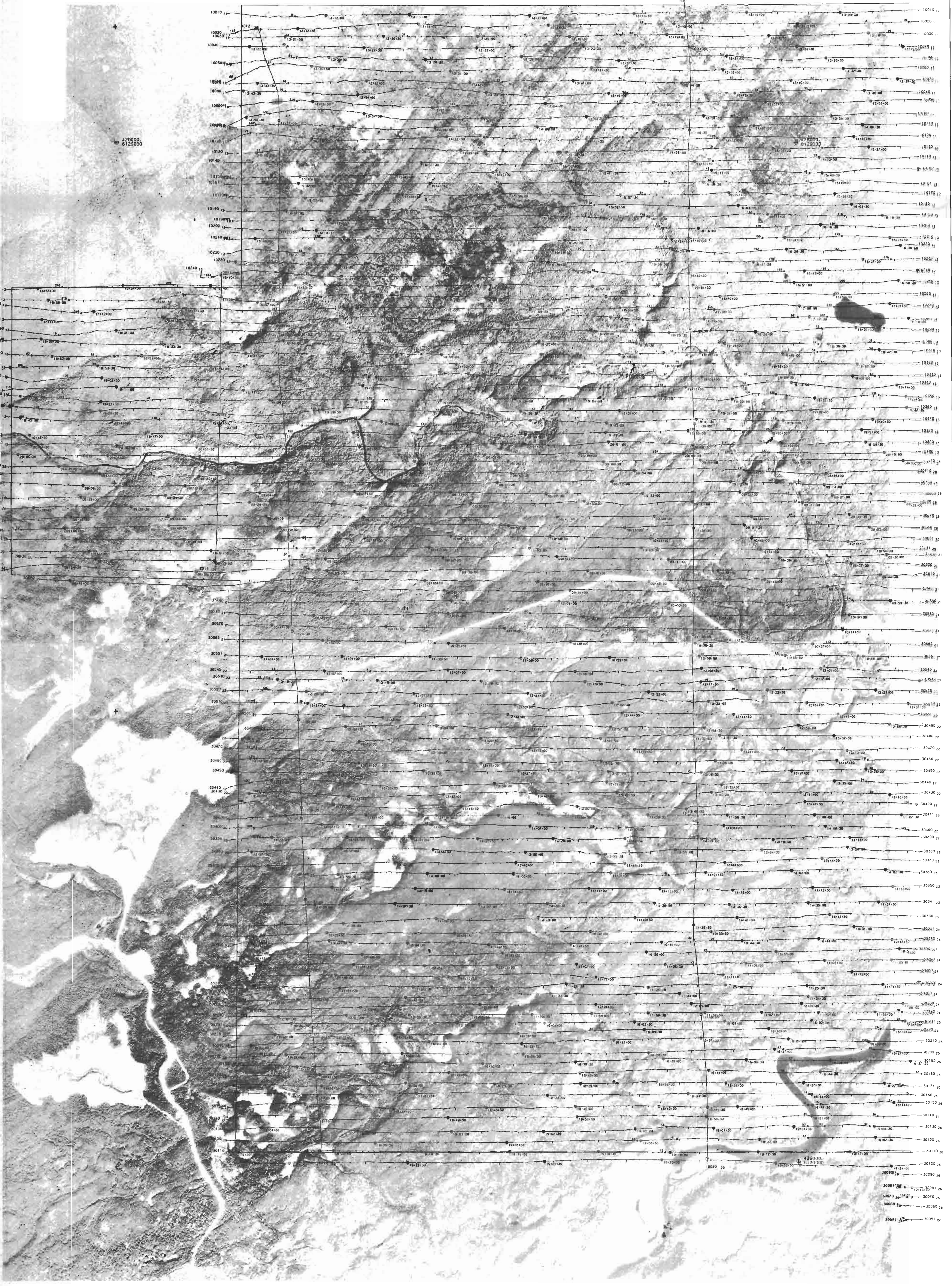


GOLDEN RULE RESOURCES LTD.

BASE MAP
NATION RIVER PROJECT
MILL CLAIMS
BRITISH COLUMBIA



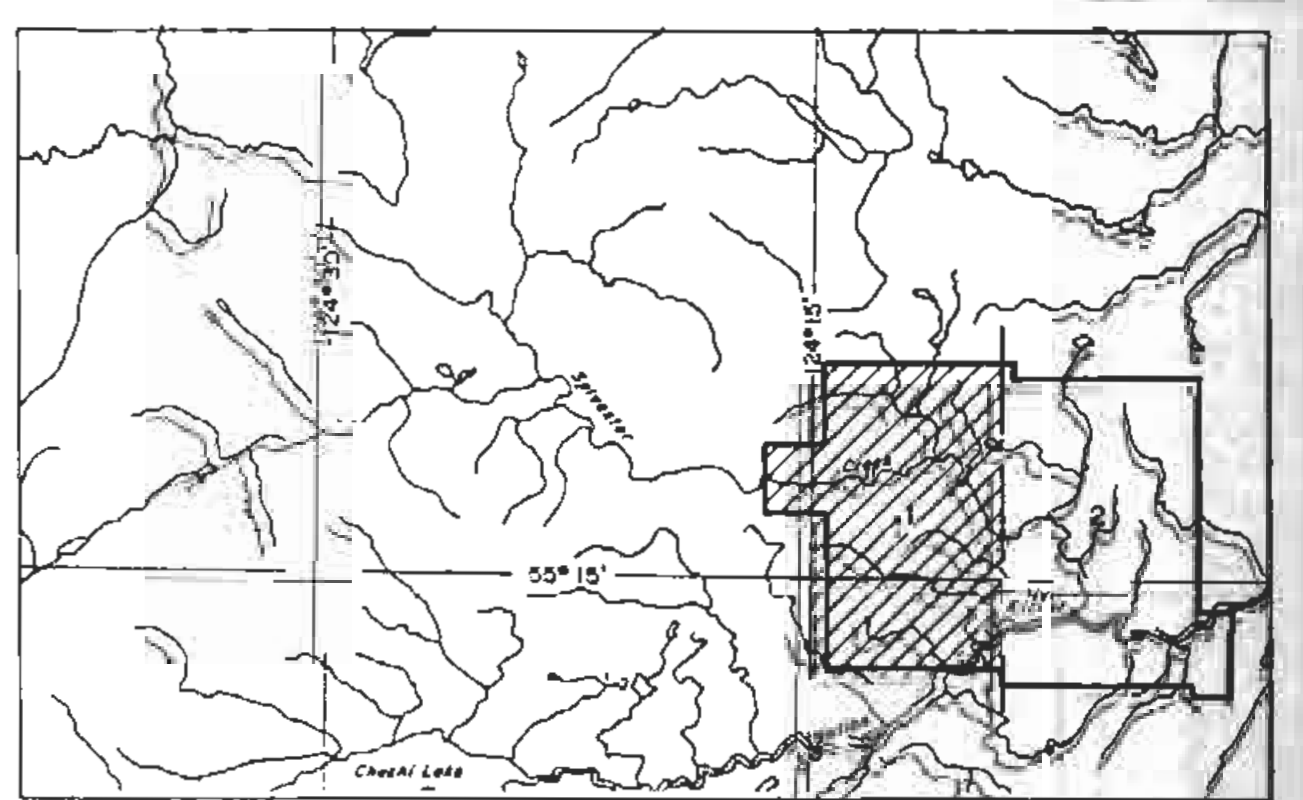
MAPRODAT LIMITED
DATE: JUNE 1990
N 55° 20' 00" N
MAP 20859 11 10030 - 11



Flight Path
Navigation and location using
a modified GPS receiver (model 111)
navigation system.
Average terrain elevation 50m
Average line spacing 100m

GEOLOGICAL BRANCH
ASSESSMENT REPORT

20,859

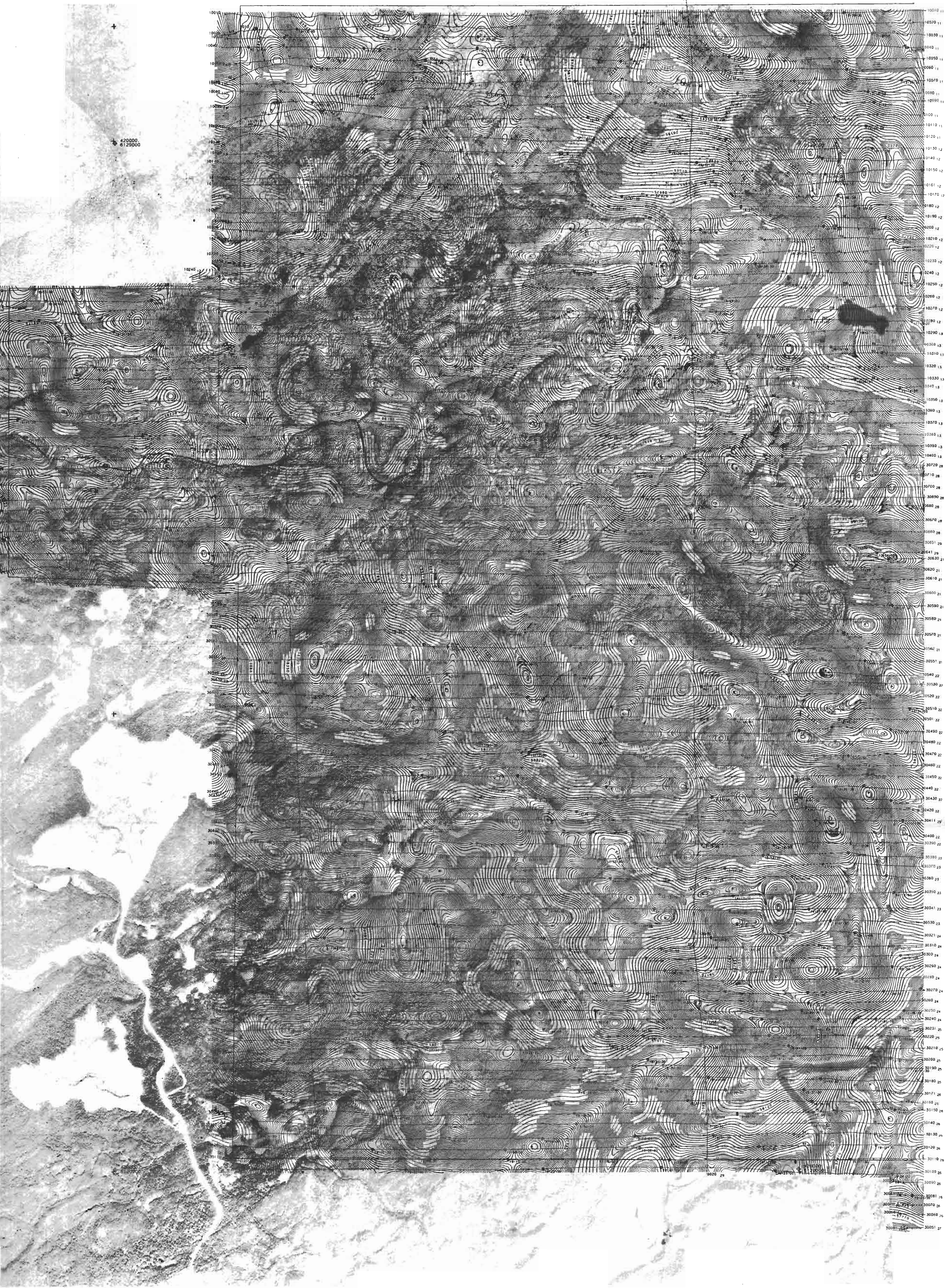


GOLDEN RULE RESOURCES LTD.

FLIGHT PATH
NATION RIVER PROJECT
MILL CLAIMS
BRITISH COLUMBIA



DATE: JUNE 1990
MAP NO: 2
1:150,000

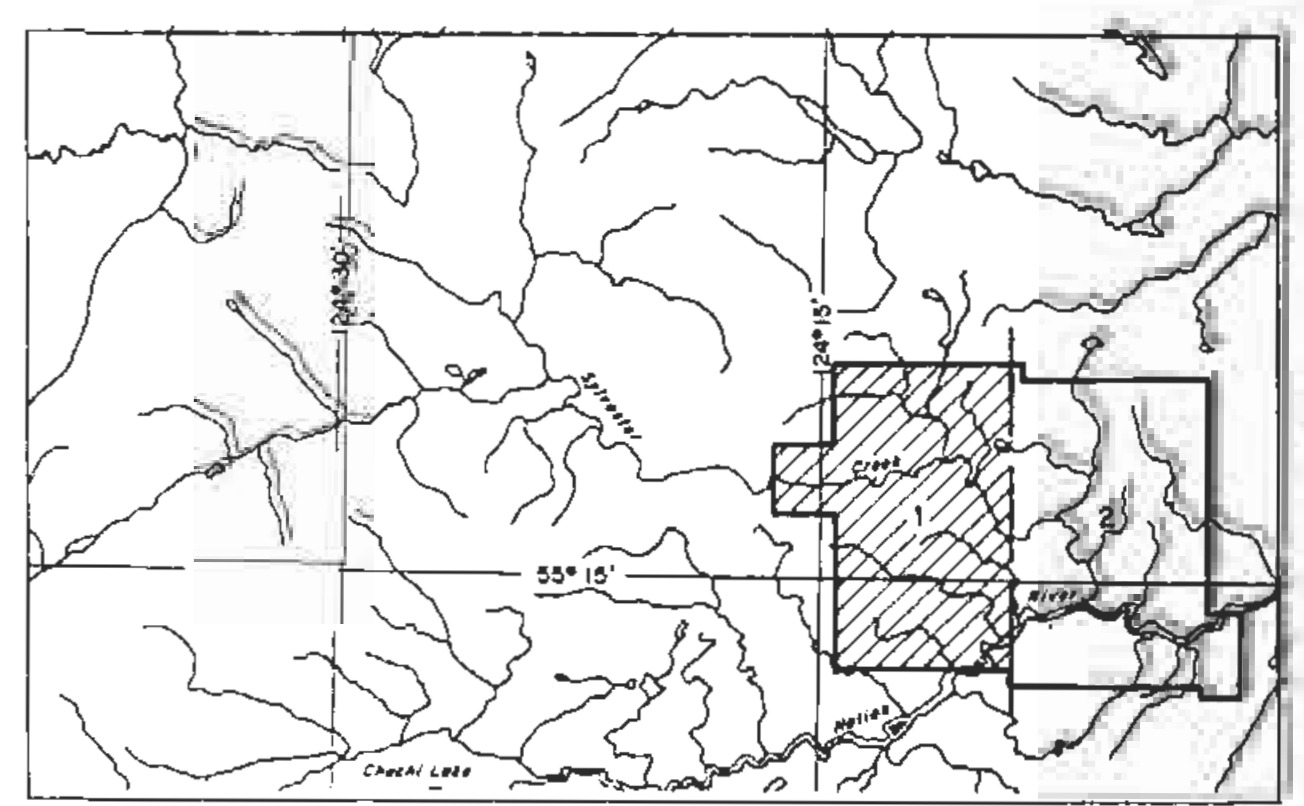


Flight Path
 Navigation and recovery using
 a Motorola Mini-Ranger (MRS 111)
 navigation system.
 Average terrain clearance 60m
 Average line spacing 100m

Magnetics
 Total Field Magnetic Intensity
 Contours in nT
 Geomagnetic anomaly
 magnetic contour
 Sensor elevation 45m

Map contours are multiples of
 those flying above
 2 nT
 5 nT
 10 nT
 100 nT

**GEOLOGICAL BRANCH
 ASSESSMENT REPORT**
20,859

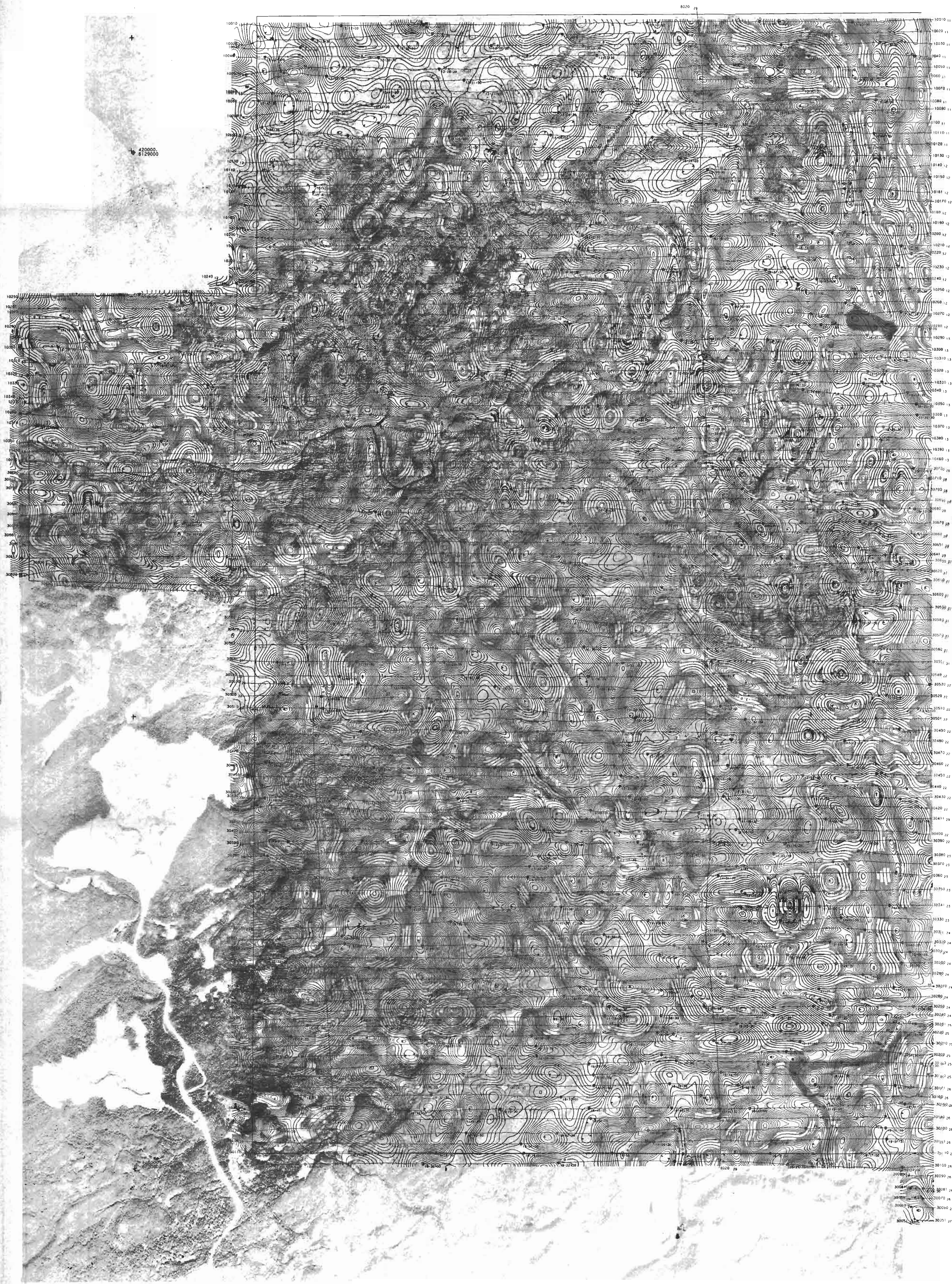


GOLDEN RULE RESOURCES LTD.

**TOTAL FIELD MAGNETIC CONTOURS
 NATION RIVER PROJECT
 MILL CLAIMS
 BRITISH COLUMBIA**

SCALE 1:100,000
 0 100 200 300 400 500 Feet
 0 100 200 300 400 500 meters

AERODAT LIMITED DATE: JUNE 1990
 NTS No: 93 N
 MAP No: 4 J9030 - 11



N

Flight Path

Navigation and recovery using
a Motorola Multi-Range (MCR-11)
navigation system.
Average terrain clearance 500
Average line spacing 100m

Vertical Gradient

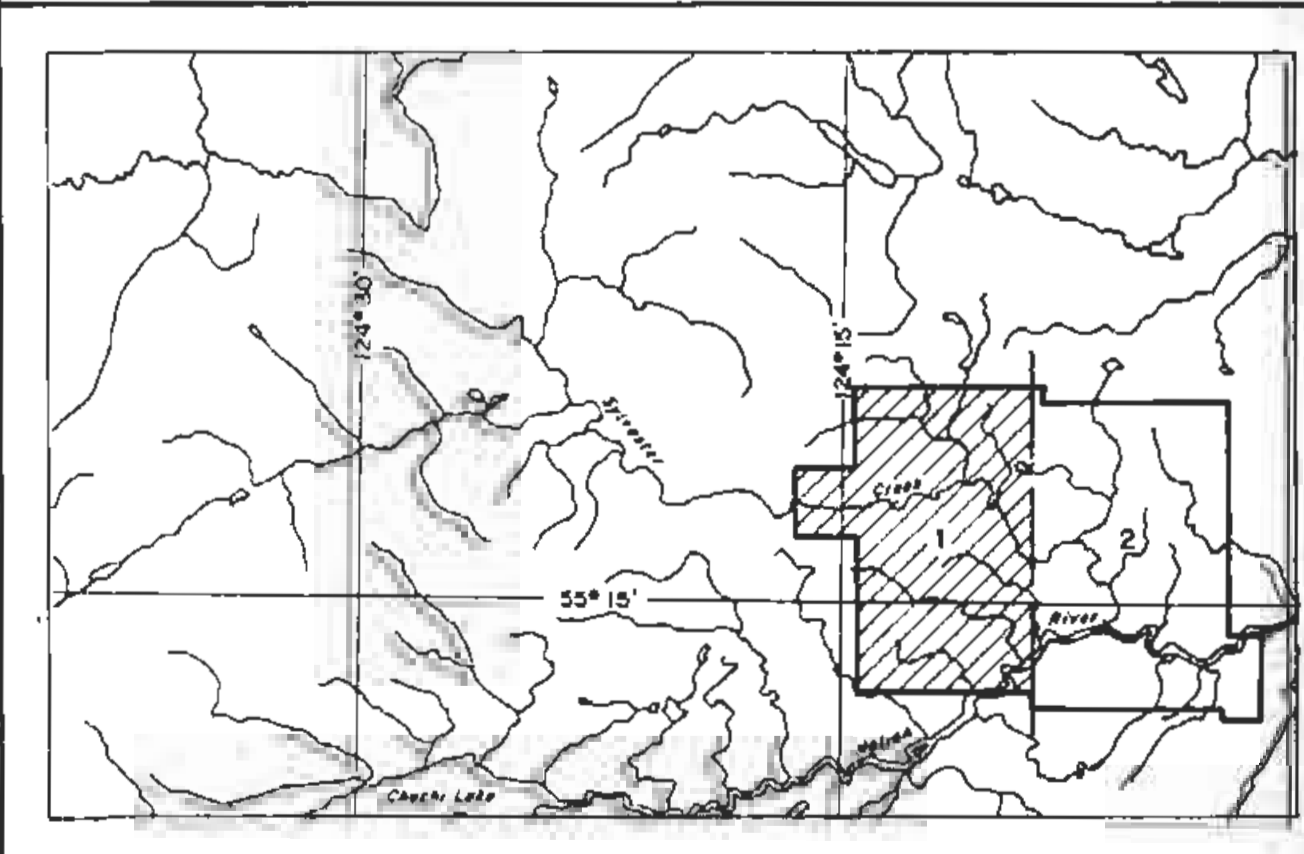
Vertical Magnetic Gradient
calculated from the following:
Magnetic intensity in nT
Geoid height anomaly
Region of use
Sensor elevation 45m

Map contour # of multiples of
those listed below

1000	2.5 nT
1000	1.00 nT
1000	1.00 nT
1000	50.00 nT

**GEOLOGICAL BRANCH
ASSESSMENT REPORT**

20,859



GOLDEN RULE RESOURCES LTD.

CALCULATED VERTICAL MAGNETIC GRADIENT

NATION RIVER PROJECT

MILL CLAIMS

BRITISH COLUMBIA

SCALE 1:10,000

100 METERS

1000 METERS

AERODAT LIMITED

DATE: JUNE 1990

MAP SHEET: 98 N

MAP SHEET: 5

9880 - 11

NATION RIVER PROJECT
MILL CLAIMS
GEOLOGY MAP
EAST HALF

Date: DECEMBER 1990 N.T.S.
Revised: Figure 4
Scale: 1:10,000



GEOLOGICAL BRANCH
ASSESSMENT REPORT

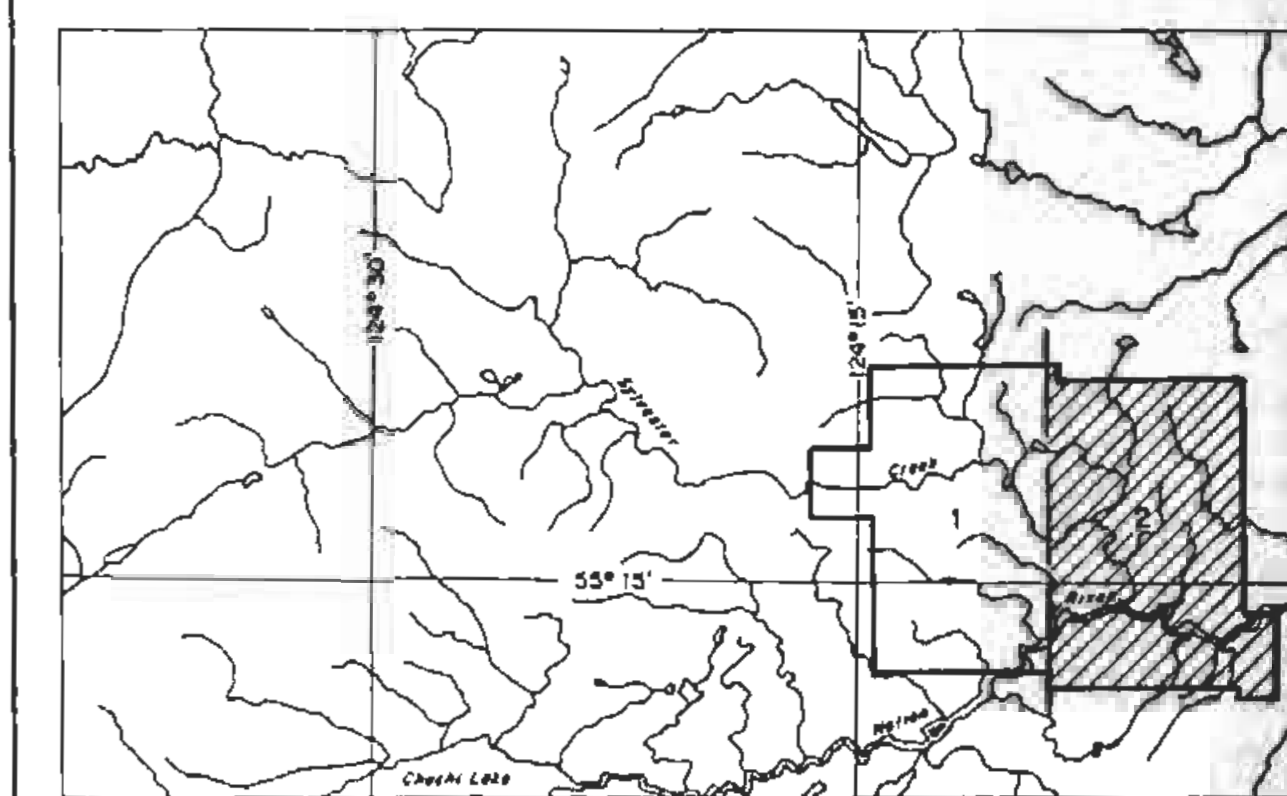
20,859





GEOLOGICAL BRANCH
ASSESSMENT REPORT

20,859



GOLDEN RULE RESOURCES LTD.

BASE MAP
NATION RIVER PROJECT
MILL CLAIMS

BRITISH COLUMBIA

SCALE 1:110,000



AERODAT LIMITED

DATE: JUNE 1990
NTS No: 93 N
MAP No: 1

J9030 - 2



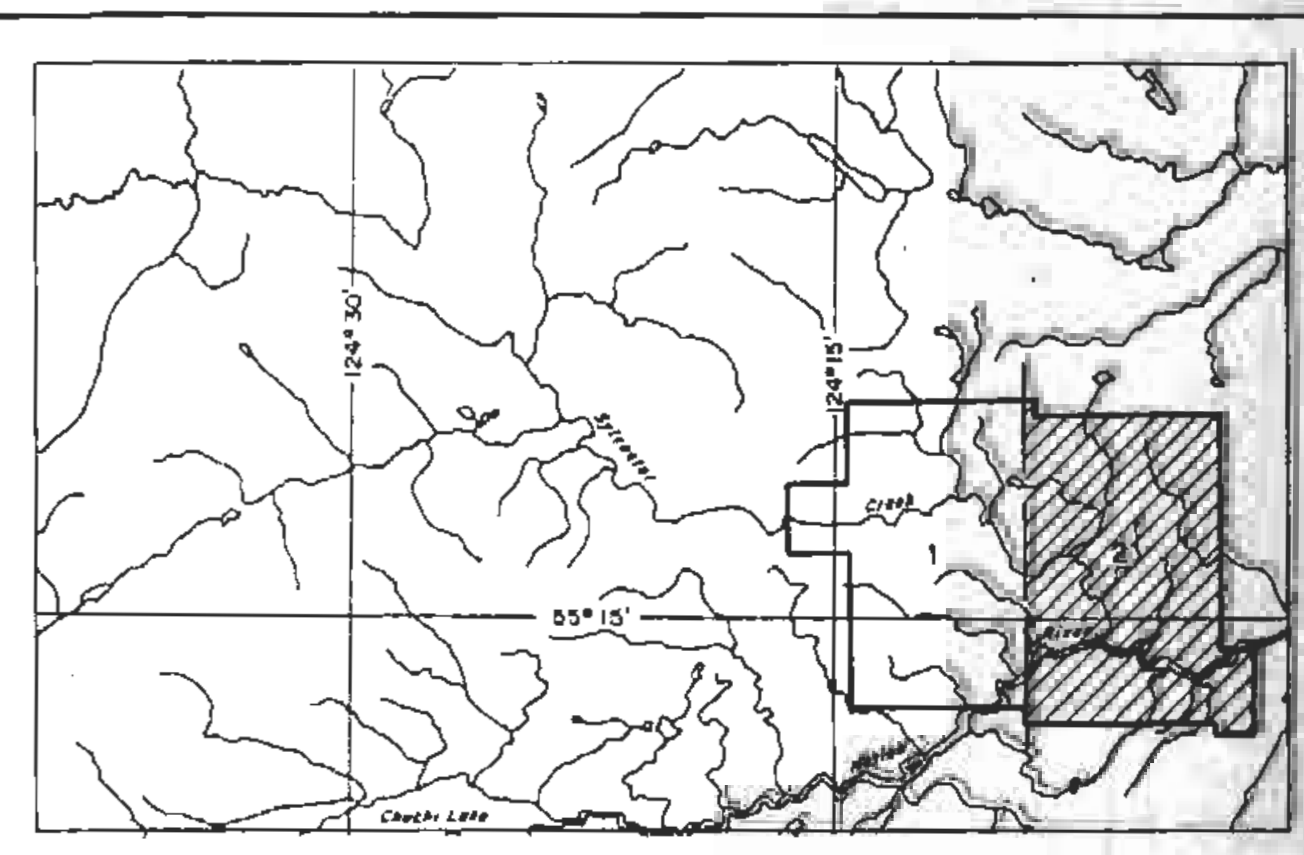
↑
N

Flight Path

Navigation and recovery using
a Motorola Multi-Charger (MRS 111)
Navigation System
Average terrain clearance 60m
Average line spacing 100m

**GEOLOGICAL BRANCH
ASSESSMENT REPORT**

20,859



GOLDEN RULE RESOURCES LTD.

FLIGHT PATH
NATION RIVER PROJECT
MILL CLAIMS
BRITISH COLUMBIA

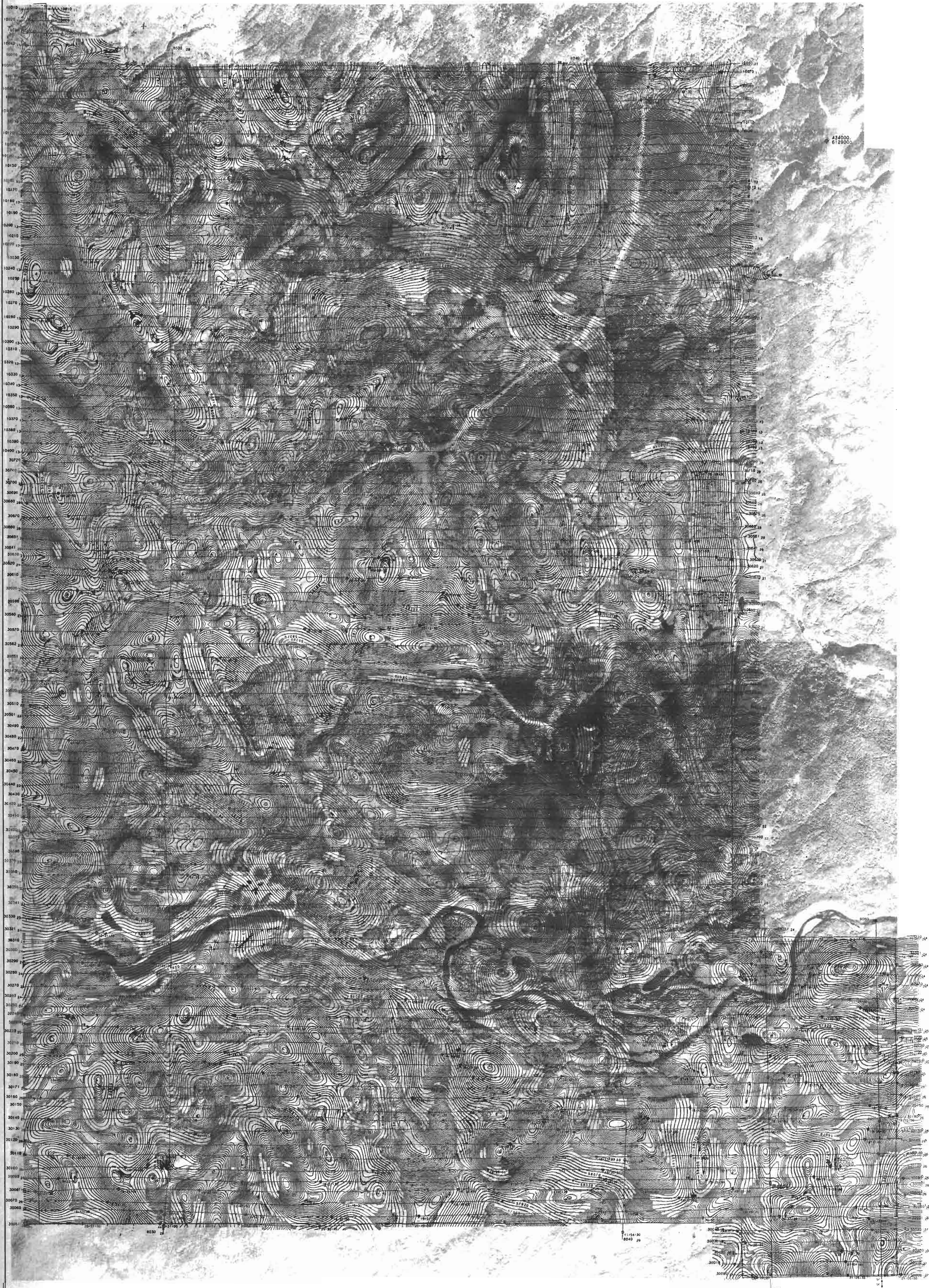
SCALE 1:110,000

0 100 200 300 400 500 600 700 800 900 1000 Metres

0 100 200 300 400 500 600 700 800 900 1000 Feet

AERODAT LIMITED DATE: JUNE 1990

NTS No: 93 N MAP No: 2 J00301-2



Flight Path
 Surveyed and processed using
 a Motorola M.S. Ranger (MS 111)
 navigation system.
 Average terrain clearance 60m
 Average line spacing 100m

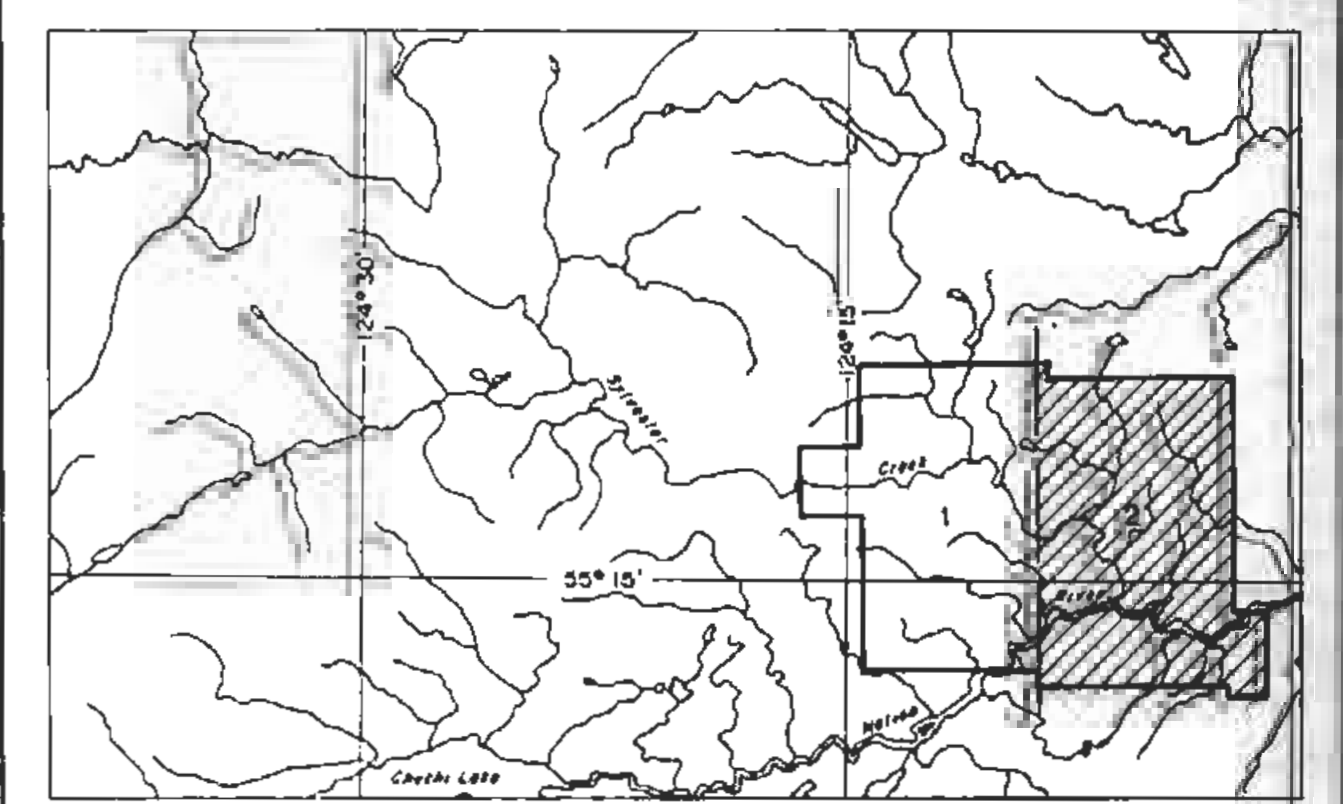
Magnetics
 Total Field Magnetic Intensity
 Contours in nT
 Contour Rise consistently
 magnetic
 Separation 45m

Map contours are multiples of
 those listed below

2 nT
10 nT
50 nT
100 nT
1000 nT

**GEOLOGICAL BRANCH
 ASSESSMENT REPORT**

20,859



GOLDEN RULE RESOURCES LTD.

**TOTAL FIELD MAGNETIC CONTOURS
 NATION RIVER PROJECT
 MILL CLAIMS
 BRITISH COLUMBIA**

SCALE 1:110,000

DATE: JUNE 1990
 NTS: 93 N
 MAP NO: 4

AERODAT LIMITED



N

Flight Path

Navigation and recording using a magnetic field strength (MFG) 111; 112; 113; 114 system.
Average terrain clearance 80m
Average line spacing 100m

Vertical Gradient

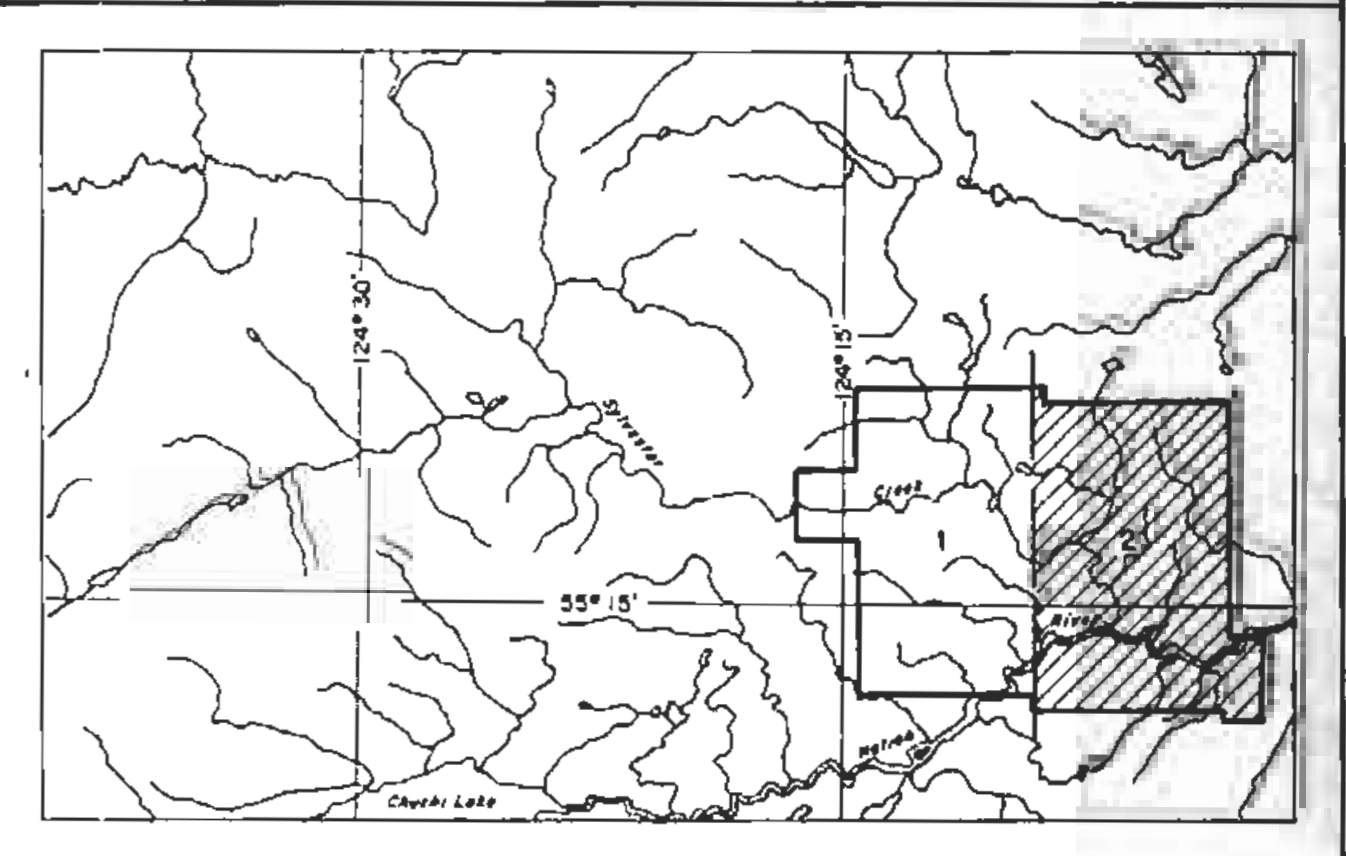
Vertical Magnetic Gradient
Calculated from the total field
magnetic intensity in nT/m.
Contour interval 10 nT/m
Contour interval 45m

Map contours are multiples of
magnetic field strength

10000
10500
11000

**GEOLOGICAL BRANCH
ASSESSMENT REPORT**

20,859



GOLDEN RULE RESOURCES LTD.

CALCULATED VERTICAL MAGNETIC GRADIENT

**NATION RIVER PROJECT
MILL CLAIMS
BRITISH COLUMBIA**

SCALE 1:100,000

DATE: JUNE 1990

AERODOT LIMITED

MAP 98' N
123° 59' W
J90301-2