

REG. NO.	0530	RD.
ACTION:		
FILE NO.		

GEOLOGICAL, GEOPHYSICAL AND GEOCHEMICAL REPORT

1990 EXPLORATION PROGRAM

PELICAN PROPERTY

GOSSAN 1 - 9, 22, 25 CLAIMS

Volume 2 of 2

CATHEDRAL GOLD CORPORATION  
ECSTALL MINING CORPORATION  
CROSS LAKE MINERALS LTD.

LIARD MINING DIVISION

104B/10W

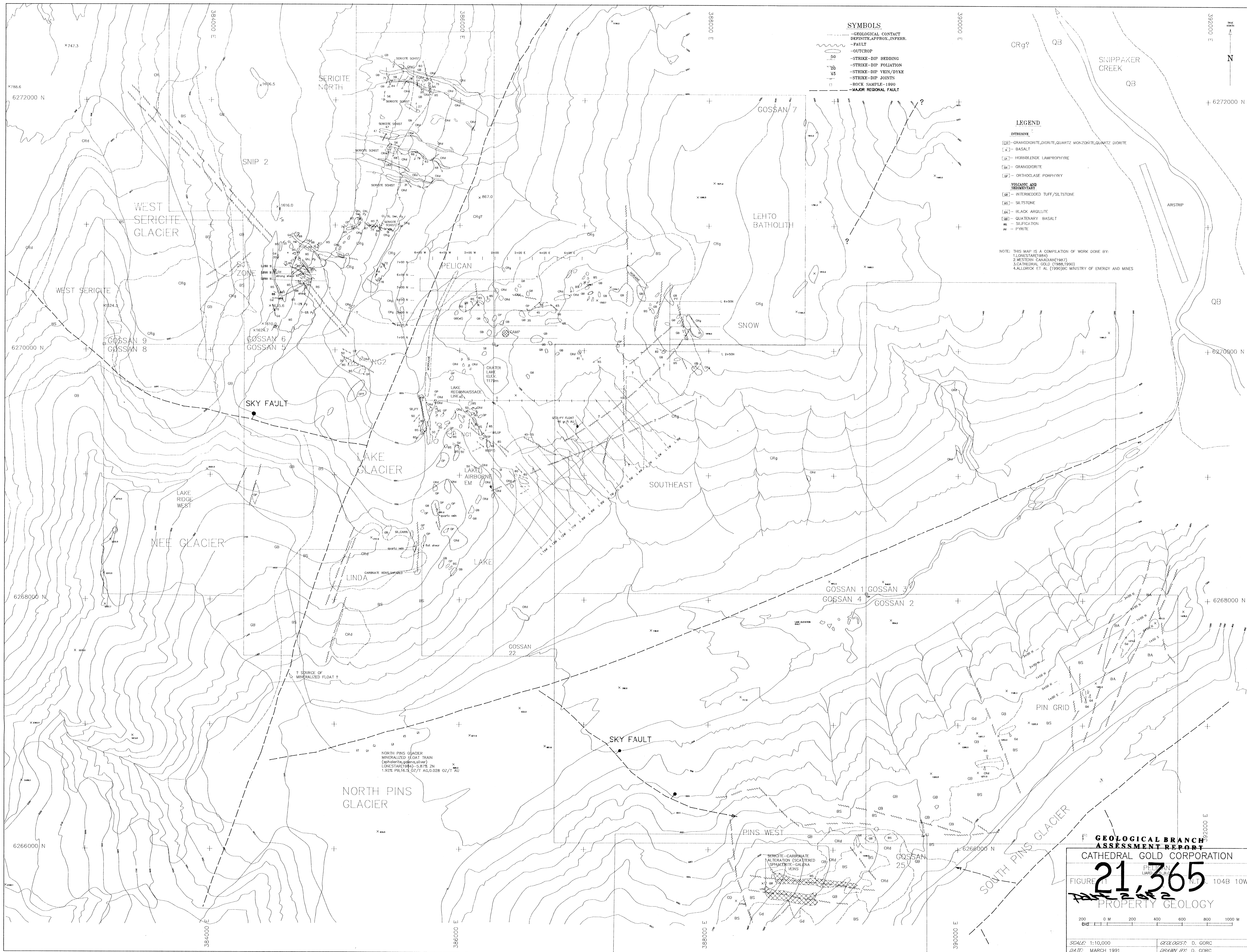
56°33'N 130° 51'W

for  
CATHEDRAL GOLD CORPORATION  
by  
DENNIS GORC

APRIL 1991

GEOLOGICAL BRANCH  
ASSESSMENT REPORT

21365  
2052



- SYMBOLS**
- - - - - GEOLOGICAL CONTACT
  - - - - - DEFINITE APPROX. INFER.
  - - - - - FAULT
  - - - - - OUTCROP
  - - - - - STRIKE-DIP BEDDING
  - - - - - STRIKE-DIP FOLIATION
  - - - - - STRIKE-DIP VEIN/DYKE
  - - - - - STRIKE-DIP JOINTS
  - - - - - ROCK SAMPLE 1990
  - - - - - MAJOR REGIONAL FAULT

**LEGEND**

- INTRUSIVE**
- [CR] - GRANODIORITE, DIORITE, QUARTZ MONZONITE, QUARTZ DIORITE
  - [X] - BASALT
  - [LP] - HORNBLENDE LAMPROPHYRE
  - [GR] - GRANODIORITE
  - [OP] - ORTHOCLASE PORPHYRY
- VOLCANIC AND SEDIMENTARY**
- [SB] - INTERBEDDED TUFF/SILTSTONE
  - [SL] - SILTSTONE
  - [BA] - BLACK ARGILLITE
  - [QB] - QUATERNARY BASALT
  - [SI] - SILURIFICATION
  - [PY] - PYRITE

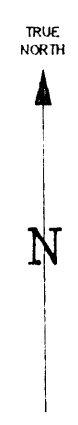
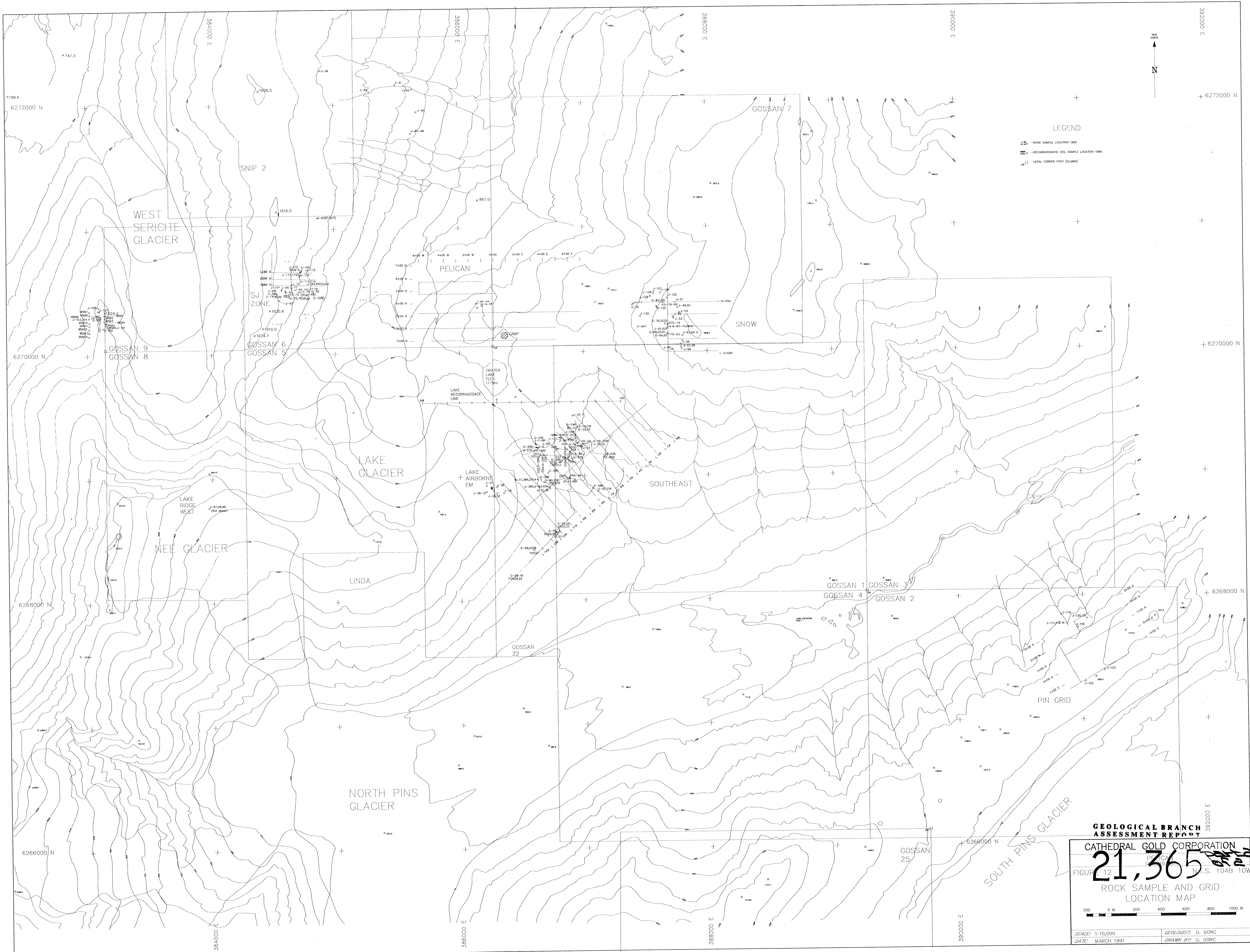
NOTE: THIS MAP IS A COMPILATION OF WORK DONE BY:  
 1. LONESTAR (1984)  
 2. WESTERN CANADIAN (1987)  
 3. CATHEDRAL GOLD (1988-1990)  
 4. ALLDRICK ET AL. (1990) BC MINISTRY OF ENERGY AND MINES

**GEOLOGICAL BRANCH ASSESSMENT REPORT**  
**CATHEDRAL GOLD CORPORATION**  
**21,365**  
**PROPERTY GEOLOGY**

FIGURE 11  
 PELICAN AREA  
 N.T.S. 1048 10W

200 0 M 200 400 600 800 1000 M

SCALE: 1:10,000  
 GEOLOGIST: D. GORC  
 DATE: MARCH 1991  
 DRAWN BY: D. GORC



**LEGEND**

- X - ROCK SAMPLE LOCATION 1990
- - RECONNAISSANCE SOIL SAMPLE LOCATION 1990
- - LEGAL CORNER POST (CLAMS)

**GEOLOGICAL BRANCH  
ASSESSMENT REPORT**

**CATHEDRAL GOLD CORPORATION**

**21,365**

FIGURE 12 N.S. 1048 10W

**ROCK SAMPLE AND GRID  
LOCATION MAP**

200 0 M 200 400 600 800 1000 M

SCALE: 1:10,000  
DATE: MARCH 1991

GEOLOGIST: D. GORC  
DRAWN BY: D. GORC



# LEGEND

## INTRUSIVE

- CRd QUARTZ MONZONITE  
QUARTZ DIORITE
- A -BASALT
- Lh -HORNBLENDE LAMPROPHYRE
- Gd - GRANODIORITE
- OP -ORTHOCLASE PORPHYRY

## VOLCANIC AND SEDIMENTARY

- GB -INTERBEDDED TUFF/SILTSTONE
- BS -SILTSTONE
- BA -BLACK ARGILLITE
- SIL -SILIFICATION
- PY -PYRITE

GEOLOGICAL BRANCH  
ASSESSMENT REPORT

21,365

*Handwritten signature/initials*

CATHEDRAL GOLD CORPORATION

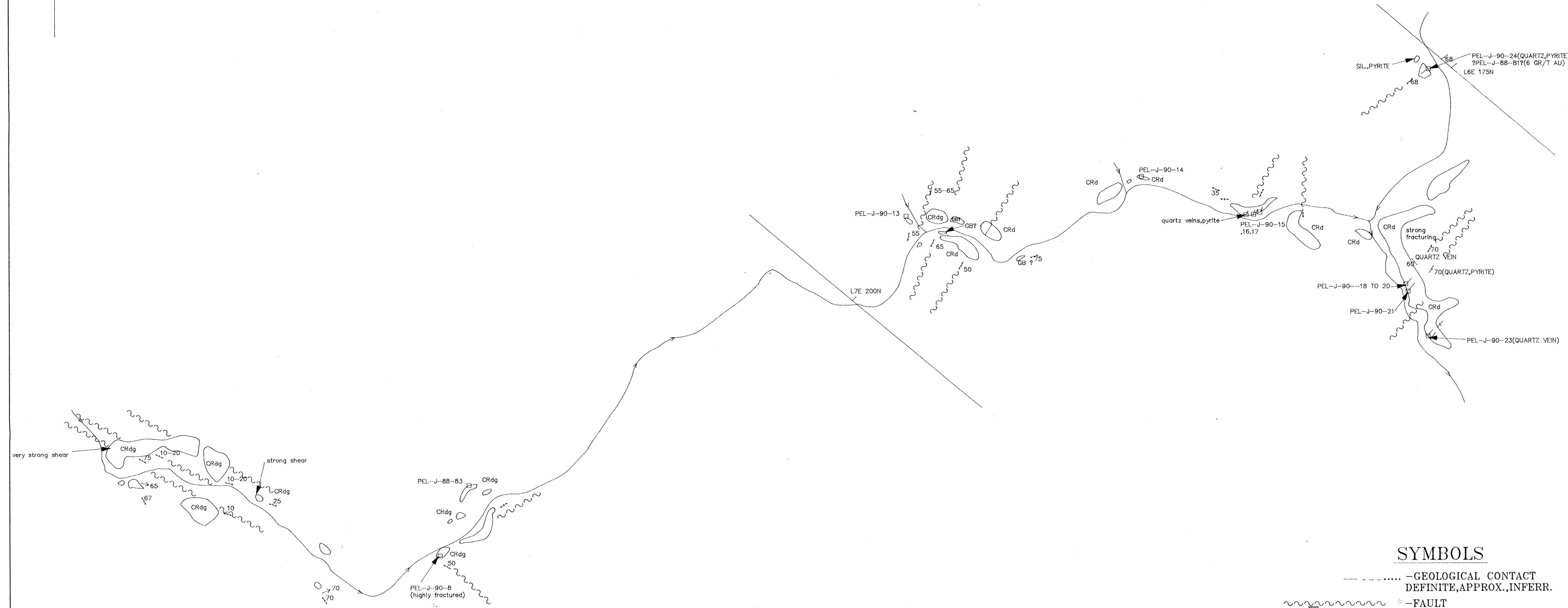
PELICAN  
LIARD M.D., B.C.

FIGURE 13 N.T.S. 104B 10W

SOUTHEAST GRID  
GEOLOGY



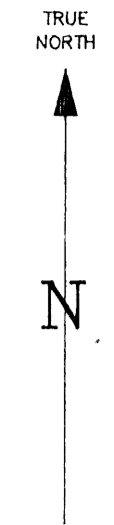
SCALE: 1: 500 GEOLOGIST: D. GORC  
DATE: MARCH 1991 DRAWN BY: D. GORC



## SYMBOLS

- - - - - GEOLOGICAL CONTACT  
DEFINITE, APPROX., INFERR.
- ~~~~~ FAULT
- OUTCROP
- 50 - STRIKE-DIP BEDDING
- STRIKE-DIP FOLIATION
- 20 - STRIKE-DIP VEIN/DYKE
- 45 - STRIKE-DIP JOINTS
- - ROCK SAMPLE-1990

SNIP 2



G-62(FLOAT)

# LEGEND

## INTRUSIVE

- 1 QUARTZ MONZONITE  
QUARTZ DIORITE
- 1a -BASALT
- 1b -HORNBLENDE LAMPROPHYRE
- 1c - GRANODIORITE
- 1d -ORTHOCLASE PORPHYRY

## VOLCANIC AND SEDIMENTARY

- 2a -INTERBEDDED TUFF/SILTSTONE
- 2b -SILTSTONE
- 3 -SERICITE SCHIST

SIL -SILIFICATION

PY -PYRITE

**GEOLOGICAL BRANCH  
ASSESSMENT REPORT**

# 21,365

1000 m  
GLACIER

## SYMBOLS

- - - - - GEOLOGICAL CONTACT  
DEFINITE, APPROX., INFERR.
- ~~~~~ FAULT
- OUTCROP
- 50 - STRIKE-DIP BEDDING
- 20 - STRIKE-DIP FOLIATION
- 45 - STRIKE-DIP VEIN/DYKE
- — — STRIKE-DIP JOINTS
- ROCK SAMPLE-1990

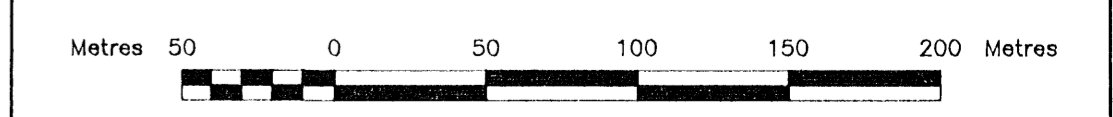
CATHEDRAL GOLD CORPORATION

PELICAN  
LIARD M.D., B.C.

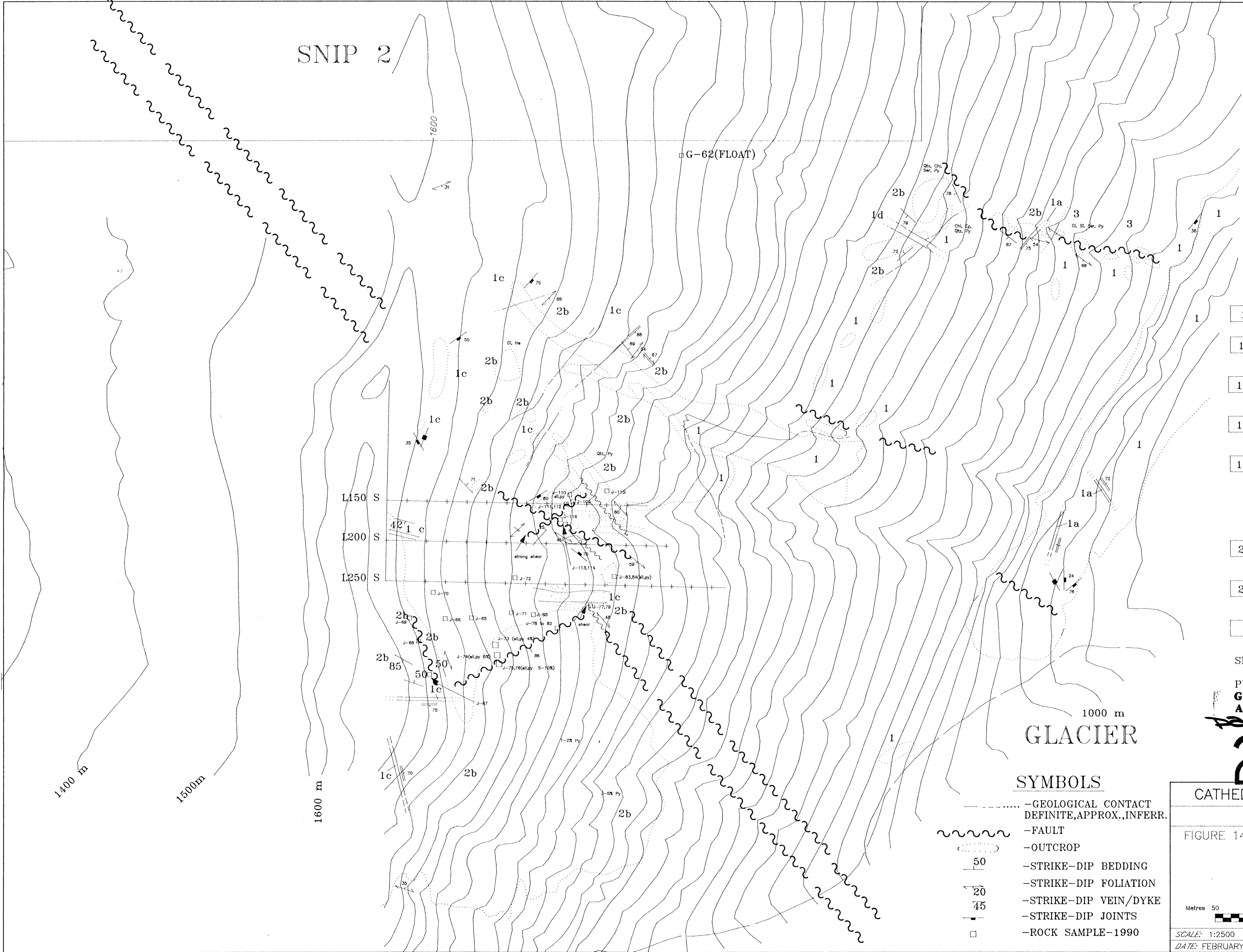
FIGURE 14 N.T.S. 104B 10W

SJ-ZONE

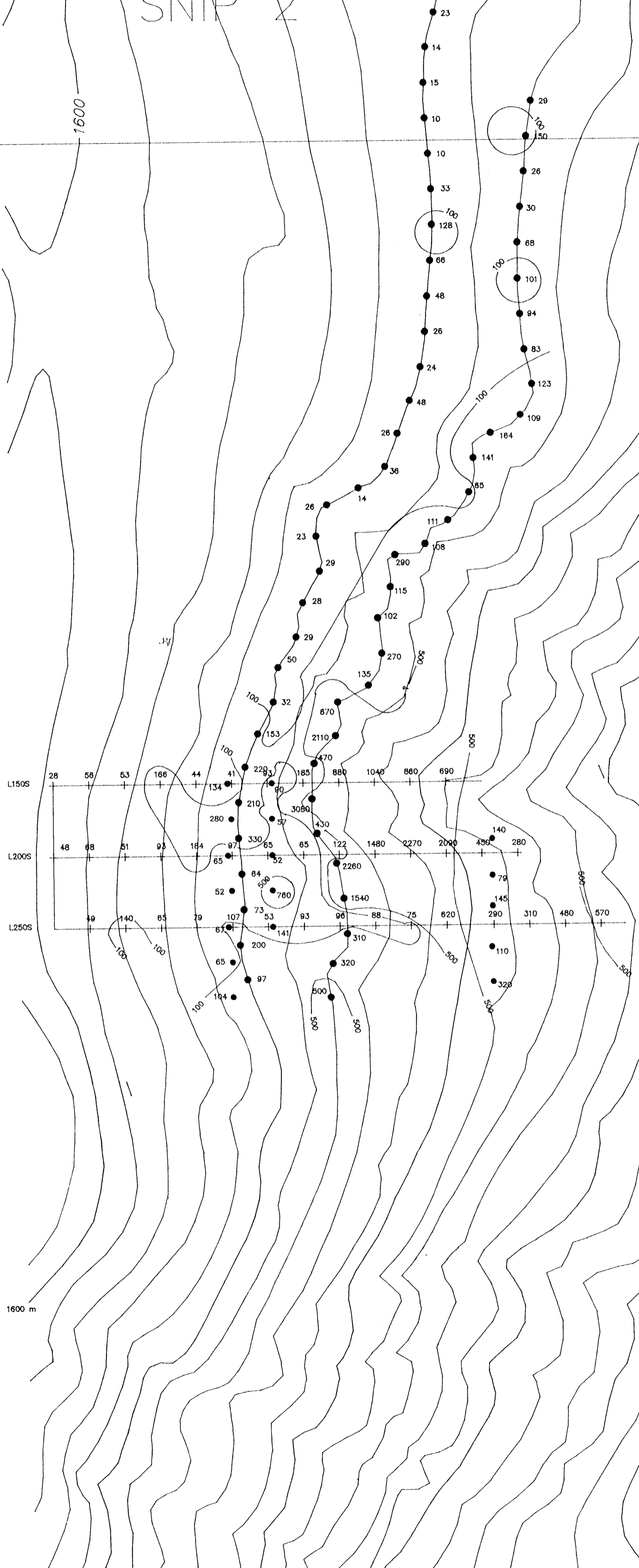
# GEOLOGY



SCALE: 1:2500  
 DATE: FEBRUARY 1991  
 GEOLOGIST: D. GORC  
 DRAWN BY: S. HAWORTH



SNIP 2

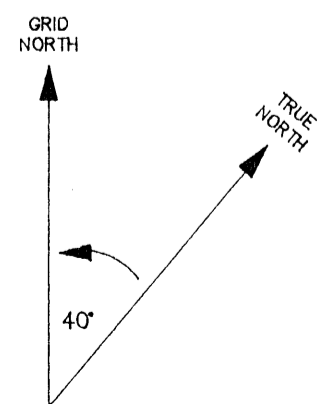
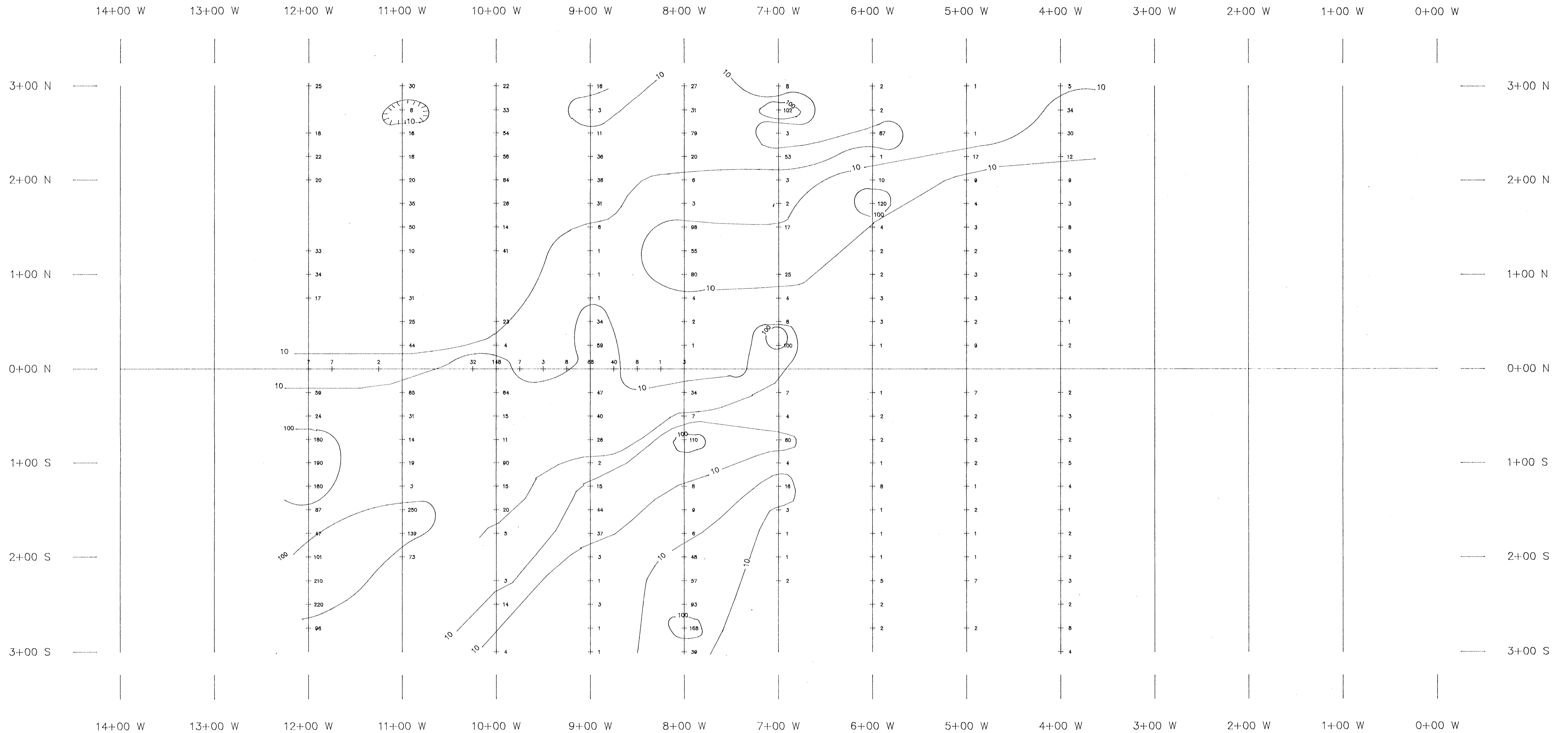


- SOIL SAMPLE SITE - AU PPB
- 500 ----- SOIL CONTOUR -500 PPB AU
- 100 ----- SOIL CONTOUR -100 PPB AU

**GEOLOGICAL BRANCH**  
**ASSESSMENT REPORT**  
 CATHEDRAL GOLD CORPORATION

FIGURE 1 PELICAN LIARD M.P.B.C. N.T.S. 104B 10W  
 21,365  
 SOIL-GEOCHEMISTRY-AU  
 Metres 50 0 50 100 150 200 Metres

SCALE: 1:2500	GEOLOGIST: D. GORC
DATE: FEBRUARY 1991	DRAWN BY: D. GORC



LEGEND

- 125 — —SOIL SMPLE SITE—AU PPB
- 10 — —CONTOUR—10 PPB AU
- 100 — —CONTOUR—100 PPB AU

**GEOLOGICAL BRANCH  
ASSESSMENT REPORT**

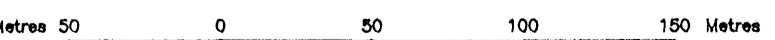
**CATHEDRAL GOLD CORPORATION**

PELICAN

FIGURE 16 N.S. 104/10W

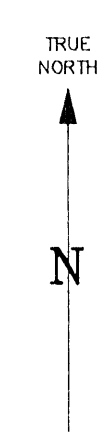
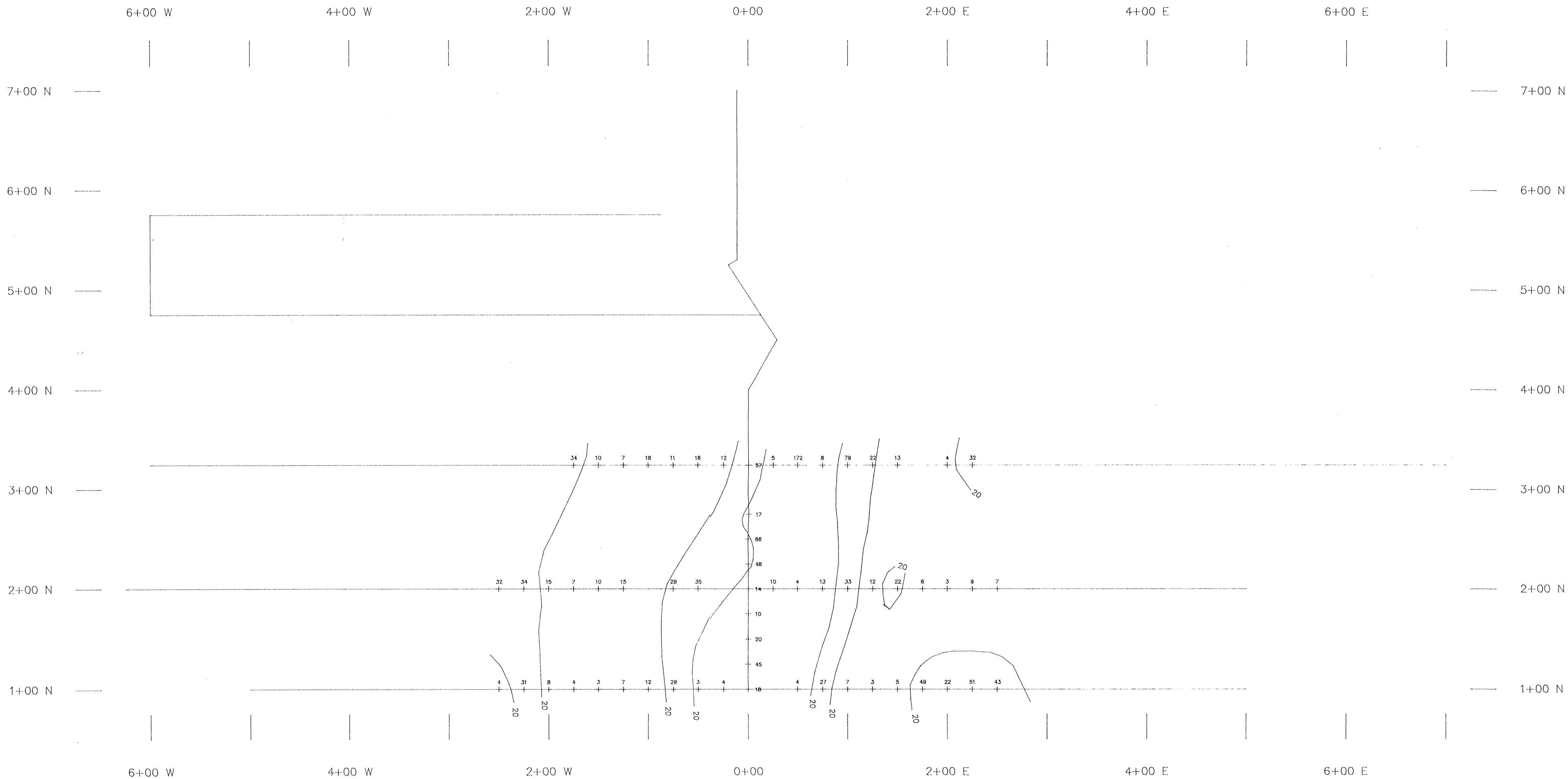
SOUTHEAST GRID

SOIL GEOCHEMISTRY—AU



SCALE: 1:2500  
DATE: MARCH 1991  
GEOLOGIST: D. GORC  
DRAWN BY: D. GORC

*Handwritten:* 21,365



LEGEND

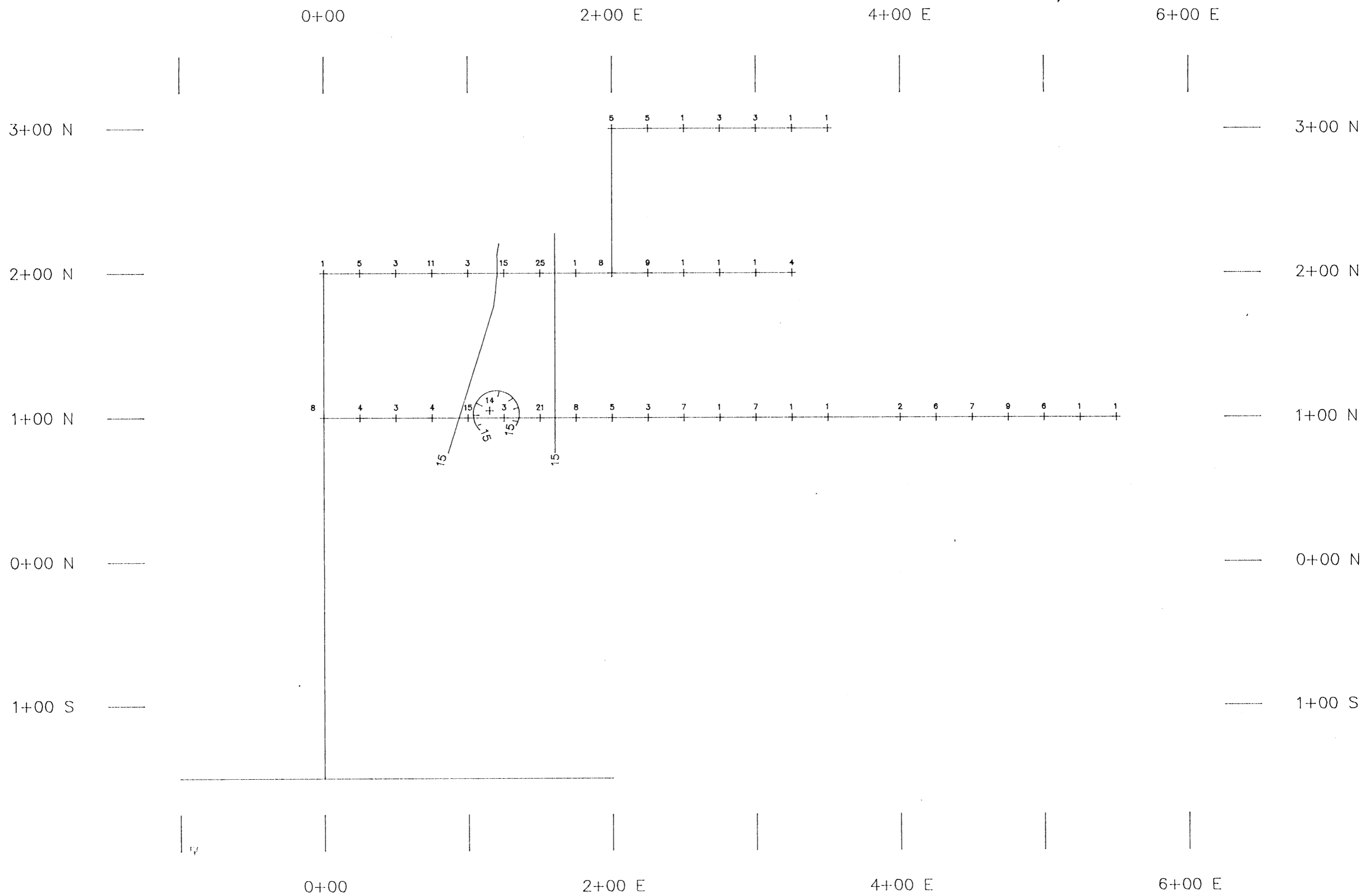
- 125 —SOIL SAMPLE SITE--AU PPB
- 20 —CONTOUR--20 PPB AU

GEOLOGICAL BRANCH ASSESSMENT REPORT

21,365

CATHEDRAL GOLD CORPORATION	
PELICAN	
FIGURE 17	N.T.S. 104B/10W
PELICAN GRID	
SOIL GEOCHEMISTRY--AU	
SCALE: 1:2500	GEOLOGIST: D. GORC
DATE: MARCH 1991	DRAWN BY: D. GORC





GRID NORTH



TRUE NORTH



L E G E N D

- Au (ppb) — SOIL SAMPLE SITE
- 15— — CONTOUR -15 PPB AU

GEOLOGICAL BRANCH ASSESSMENT REPORT

21,365

252

CATHEDRAL GOLD CORPORATION

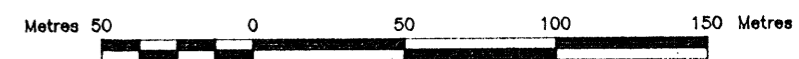
PELICAN

FIGURE 18

N.T.S. 104B/10W

PIN GRID

SOIL GEOCHEMISTRY—AU



SCALE: 1:2500

GEOLOGIST: D. GORC

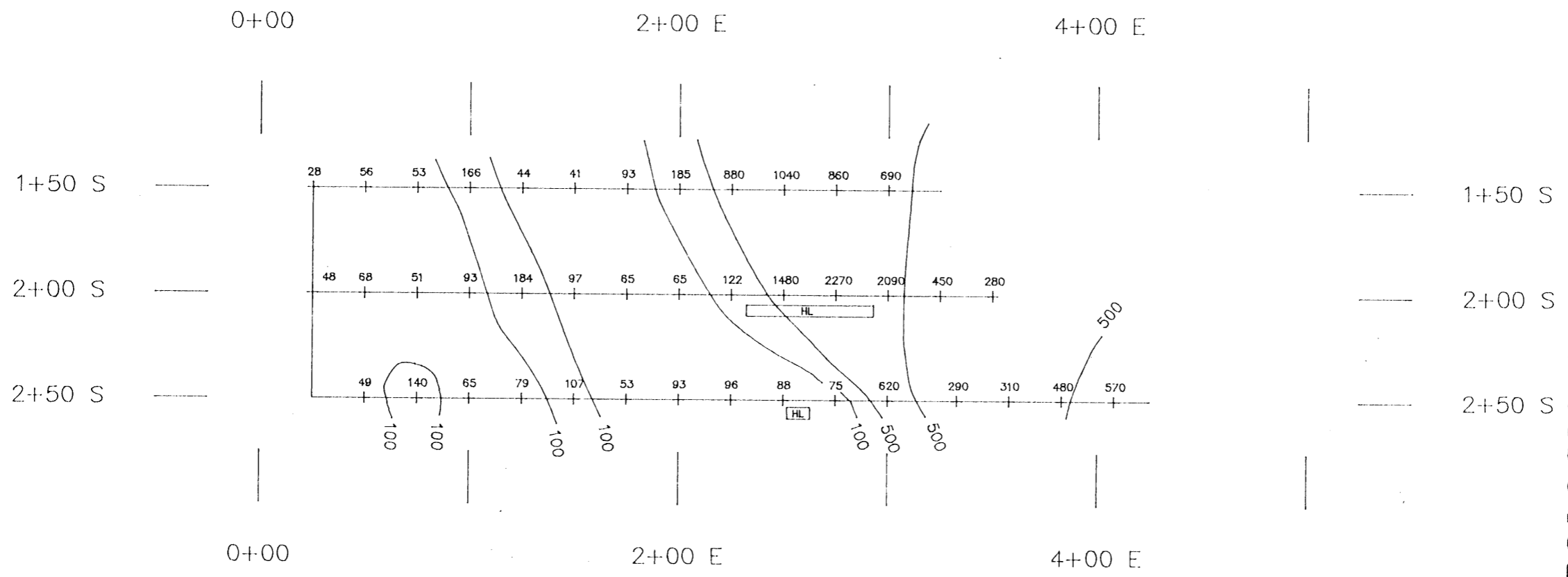
DATE: MARCH 1991

DRAWN BY: D. GORC

21,365  
 2  
 2

21,365

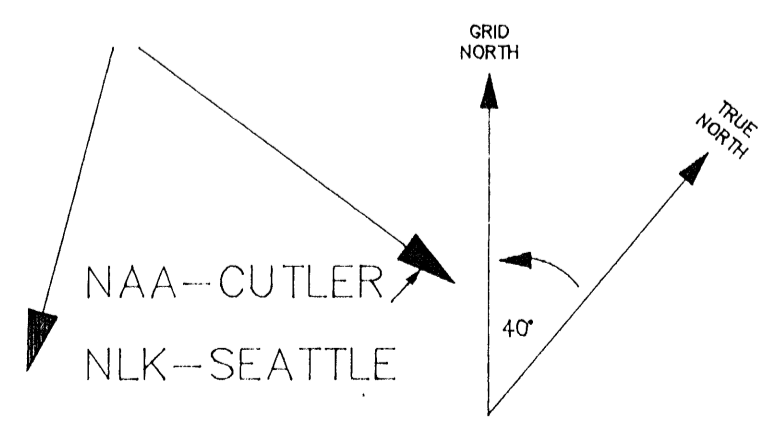
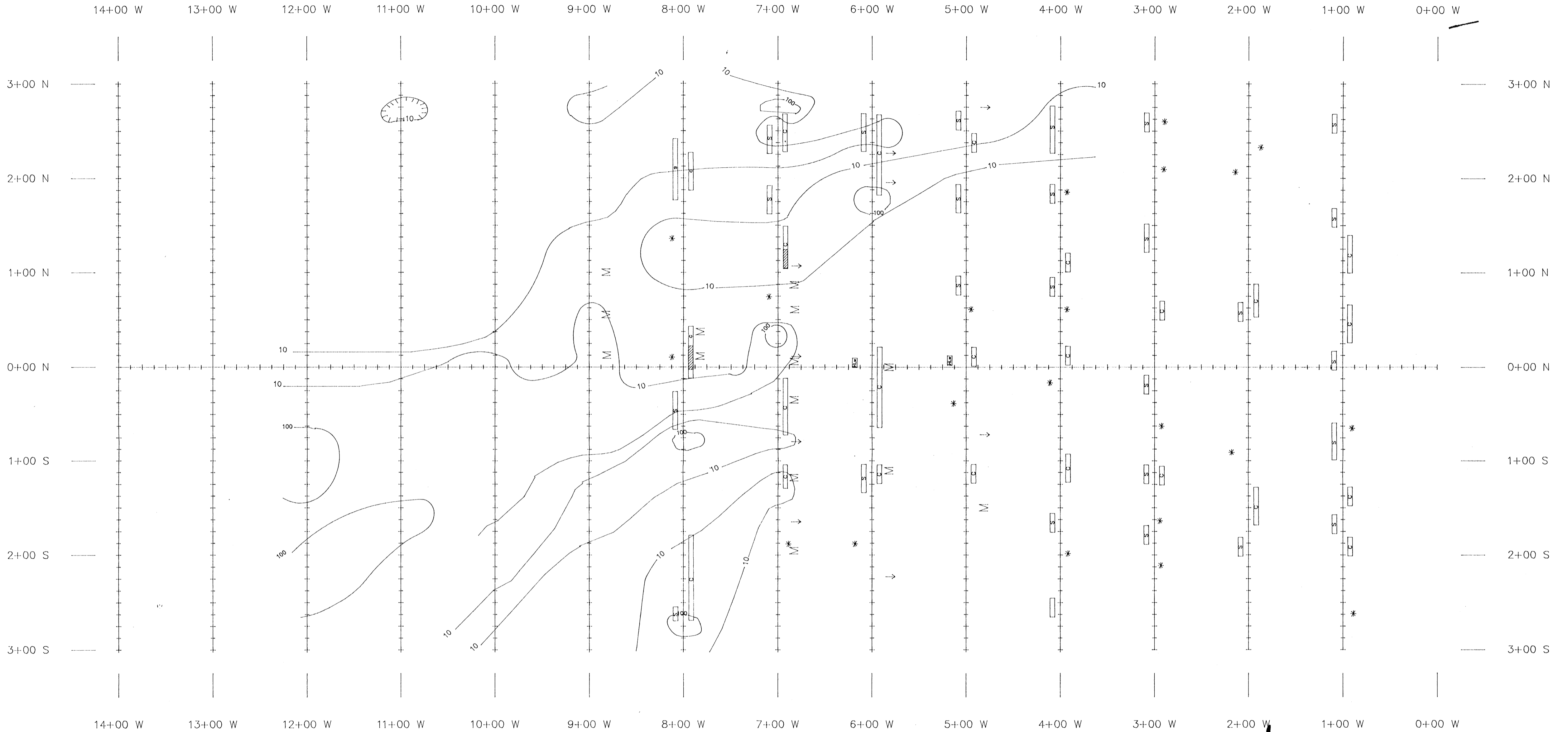
GEOLOGICAL BRANCH  
 ASSESSMENT REPORT



LEGEND

- HL - HORIZONTAL LOOP EM ANOMALY
  - 250 - SOIL SAMPLE LOCATION -AU PPB
  - 100 - SOIL CONTOUR -100 AND 500 PPB AU
- COIL SEPARATION 50M  
 FREQUENCIES: 220,880,3520,7040,14080 HZ

CATHEDRAL GOLD CORPORATION	
PELICAN	
FIGURE 19	N.T.S. 104B/10W
SJ GRID GEOPHYSICAL/GEOCHEMICAL COMPILATION	
SCALE: 1:2500	GEOPHYSICIST: R. CAVEN
DATE: MARCH 1991	DRAWN BY: D. GORC



**GEOPHYSICAL LEGEND**

STRONG > 20%	MEDIUM 10-20%	WEAK < 10%	SURFACE FEATURE?	*?	-EM-16 VLF-EM ANOMALIES NLK--SEATTLE, WASHINGTON
LINE	LINE	LINE	LINE	LINE	-EM-16 VLF-EM ANOMALIES NAA--CUTLER, MAINE
LINE	LINE	LINE	LINE	LINE	-HORIZONTAL LOOP EM ANOMALY
LINE	LINE	LINE	LINE	LINE	-DOUBLE DIPOLE EM ANOMALY
LINE	LINE	LINE	LINE	LINE	-MAGNETIC PEAK

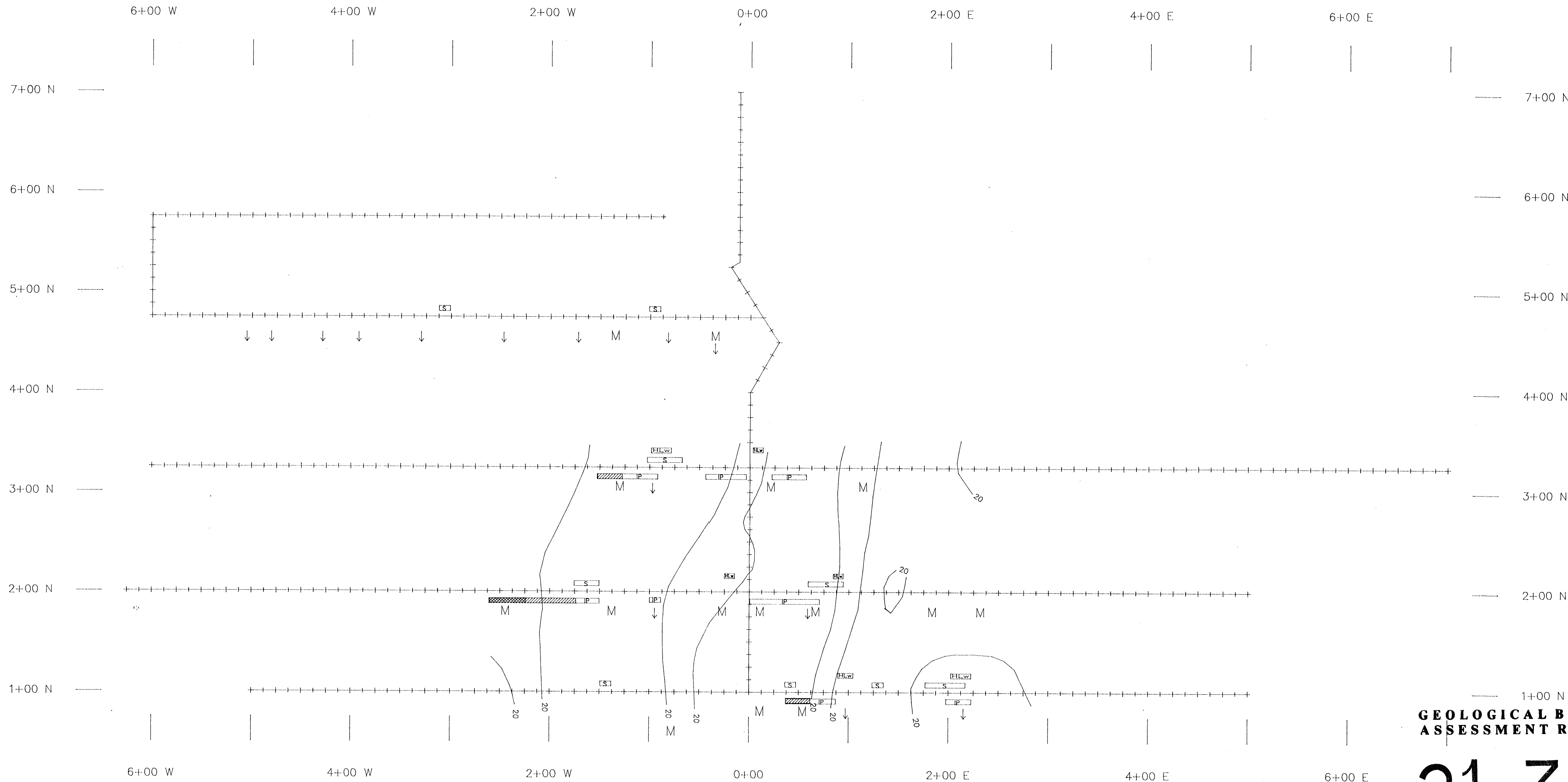
**LEGEND**

10	-CONTOUR--10 PPB AU
100	-CONTOUR--100 PPB AU

**GEOLOGICAL BRANCH  
ASSESSMENT REPORT**  
 21,365

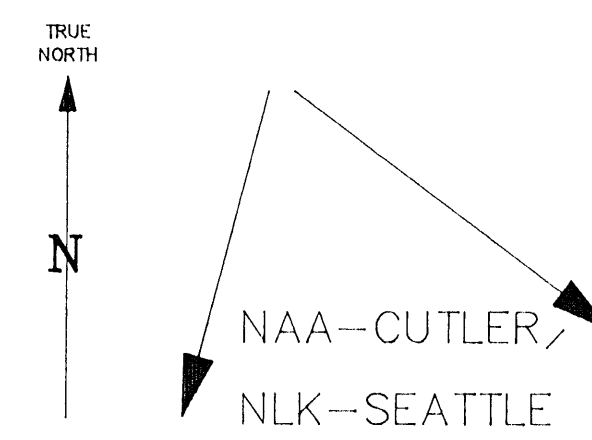
**CATHEDRAL GOLD CORPORATION**  
 PELICAN  
 FIGURE 20 N.T.S. 104B/10W  
 SOUTHEAST GRID  
 GEOPHYSICAL/GEOCHEMICAL  
 COMPILATION

SCALE: 1:2500  
 DATE: MARCH 1991  
 GEOPHYSICIST: R. CAVEN  
 DRAWN BY: D. GORC



**GEOLOGICAL BRANCH  
ASSESSMENT REPORT**

**21,365**  
*Box 2 of 2*



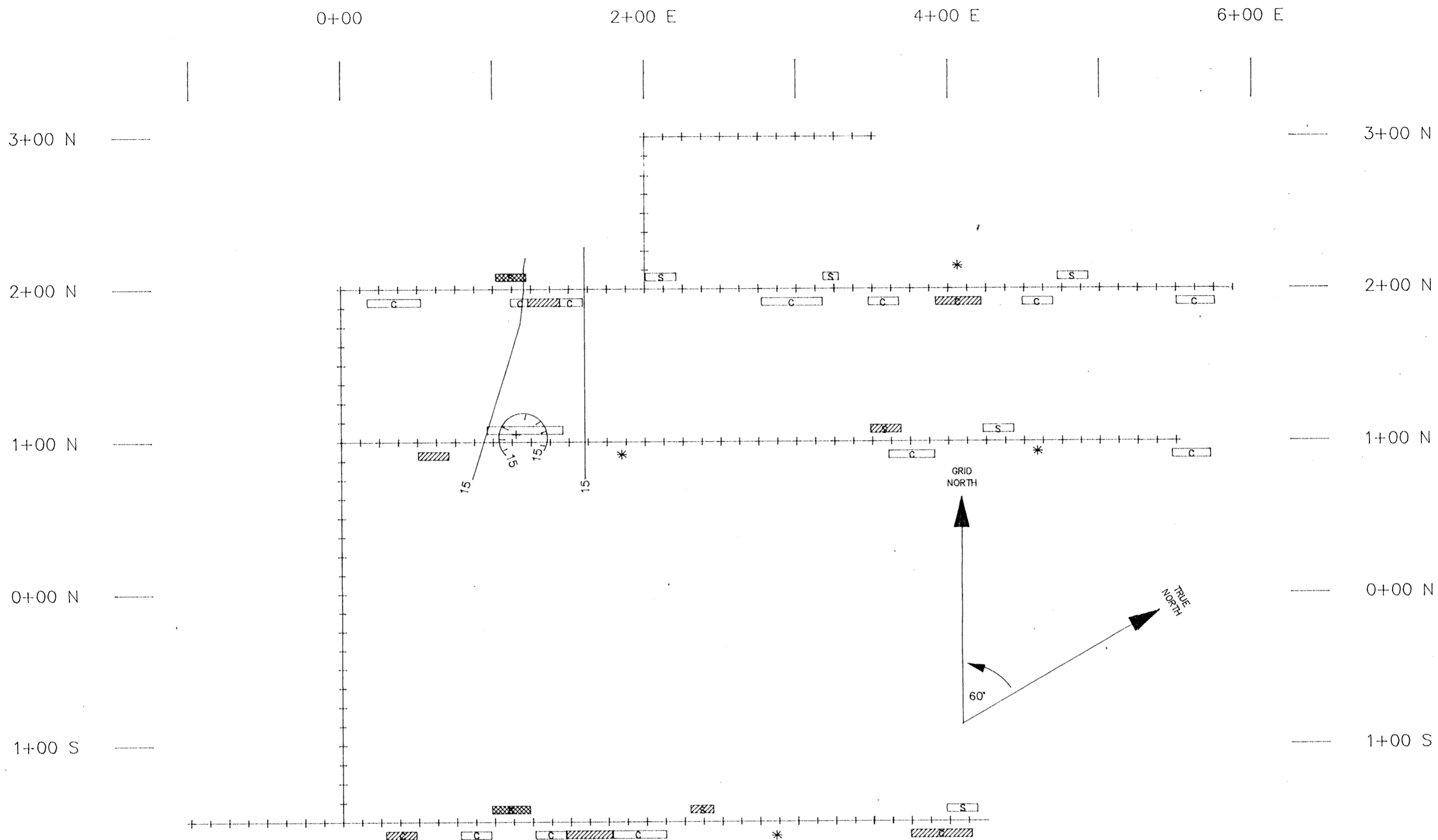
**GEOPHYSICAL LEGEND**

LINE	STRONG > 20%	MEDIUM 10-20%	WEAK < 10%	SURFACE FEATURE? *	-EM-16 VLF-EM ANOMALIES NLK-SEATTLE, WASHINGTON
LINE				*?	-EM-16 VLF-EM ANOMALIES NAA-CUTLER, MAINE
LINE			medium HL-w	weak HL-w	-HORIZONTAL LOOP EM ANOMALY
LINE				M	-DOUBLE DIPOLE EM ANOMALY
LINE					-MAGNETIC PEAK
LINE	Strong	Medium	Surface	IP	-INDUCED POLARIZATION

**LEGEND**

— 10 —	-CONTOUR-10 PPB AU
— 100 —	-CONTOUR-100 PPB AU

CATHEDRAL GOLD CORPORATION  
 PELICAN  
 FIGURE 21 N.T.S. 1048/10W  
 PELICAN GRID  
 GEOPHYSICAL/GEOCHEMICAL  
 COMPILATION  
 Metres 50 0 50 100 150 Metres  
 SCALE: 1:2500 GEOLOGIST: D. GORC  
 DATE: MARCH 1991 DRAWN BY: D. GORC



NAA--CUTLER  
 NLK--SEATTLE

GEOPHYSICAL LEGEND

STRONG > 20%	MEDIUM 10-20%	WEAK < 10%	SURFACE FEATURE? *	-EM-16 VLF-EM ANOMALIES NLK--SEATTLE, WASHINGTON
LINE	LINE	LINE	LINE	-EM-16 VLF-EM ANOMALIES NAA--CUTLER, MAINE
LINE	LINE	LINE	LINE	-HORIZONTAL LOOP EM ANOMALY
	LINE	LINE	LINE	-DOUBLE DIPOLE EM ANOMALY
	LINE	LINE	LINE	-MAGNETIC PEAK
		15		-SOIL CONTOUR--AU 15 PPB

6+00 E

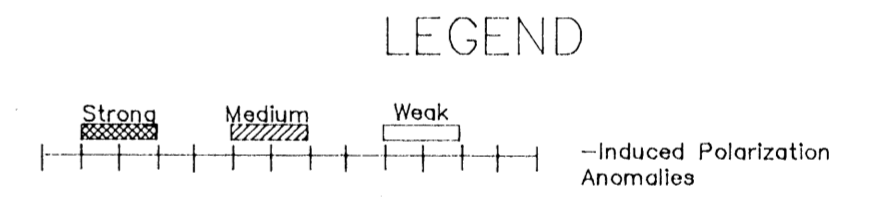
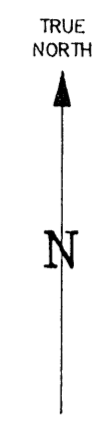
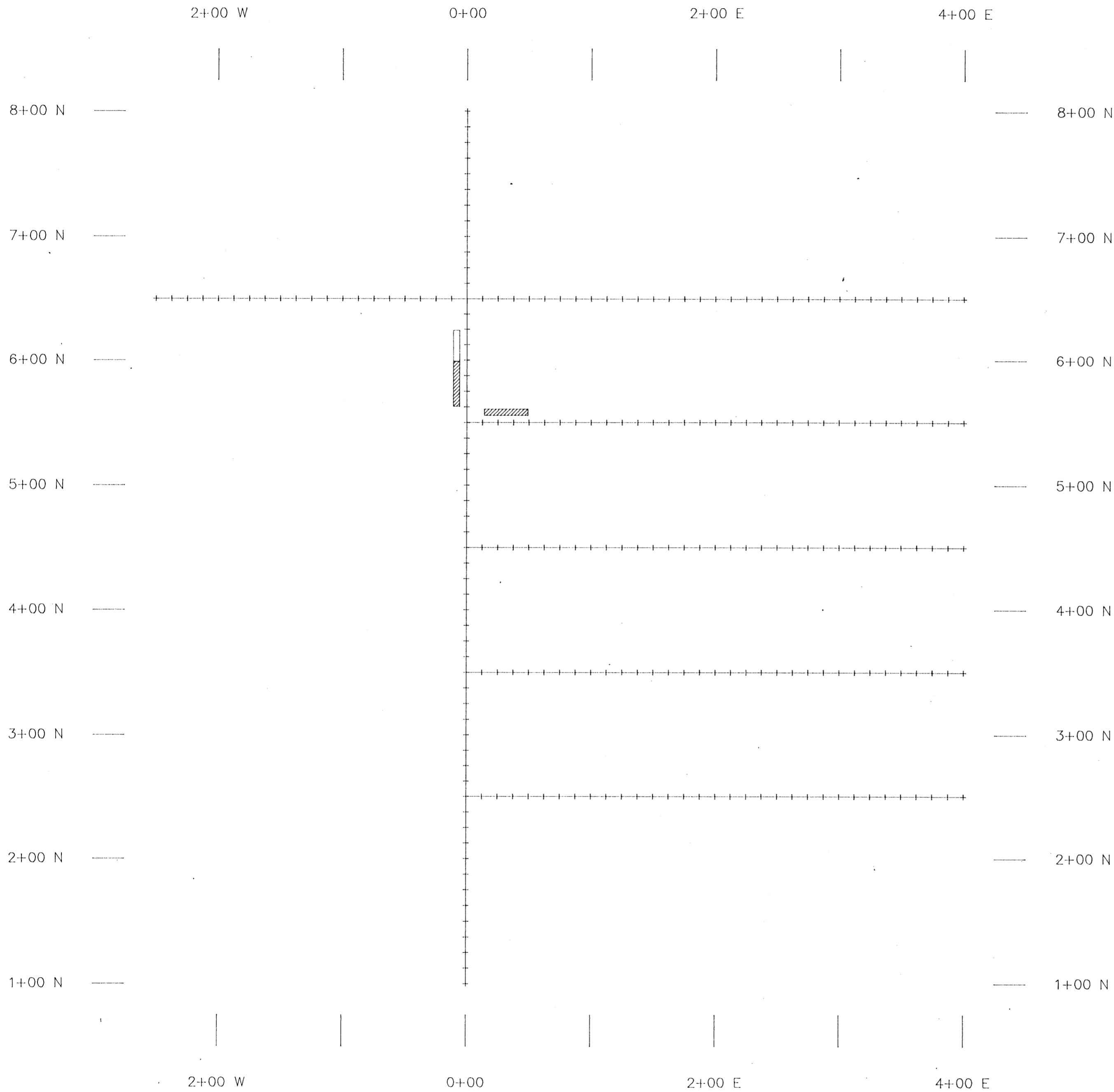
**GEOLOGICAL BRANCH  
ASSESSMENT REPORT**

*21,365*

CATHEDRAL GOLD CORPORATION  
 PELICAN  
 FIGURE 22 U.S. 104B/10W  
 PIN GRID  
 GEOPHYSICAL/GEOCHEMICAL  
 COMPILATION

Metres 50 0 50 100 150 Metres

SCALE: 1:2500	GEOPHYSICIST: ROGER CAVEN
DATE: MARCH 1991	DRAWN BY: D. GORC



**GEOLOGICAL BRANCH  
ASSESSMENT REPORT**

**21,365**  
*Part 2 of 2*

CATHEDRAL GOLD CORPORATION	
PELICAN	
FIGURE 23	N.T.S. 104B/10W
SNOW GRID GEOPHYSICAL COMPILATION	
SCALE: 1:2500	GEOPHYSICIST: R. CAVEN
DATE: MARCH 1991	DRAWN BY: D. GORC