

202

AP

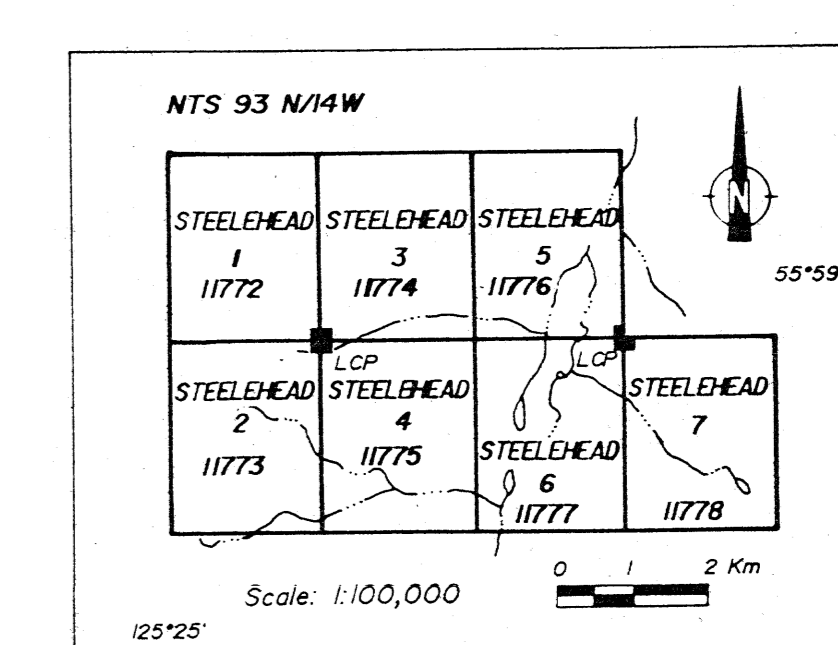
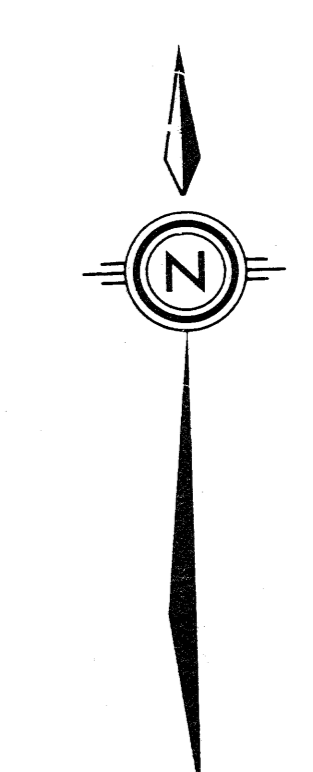
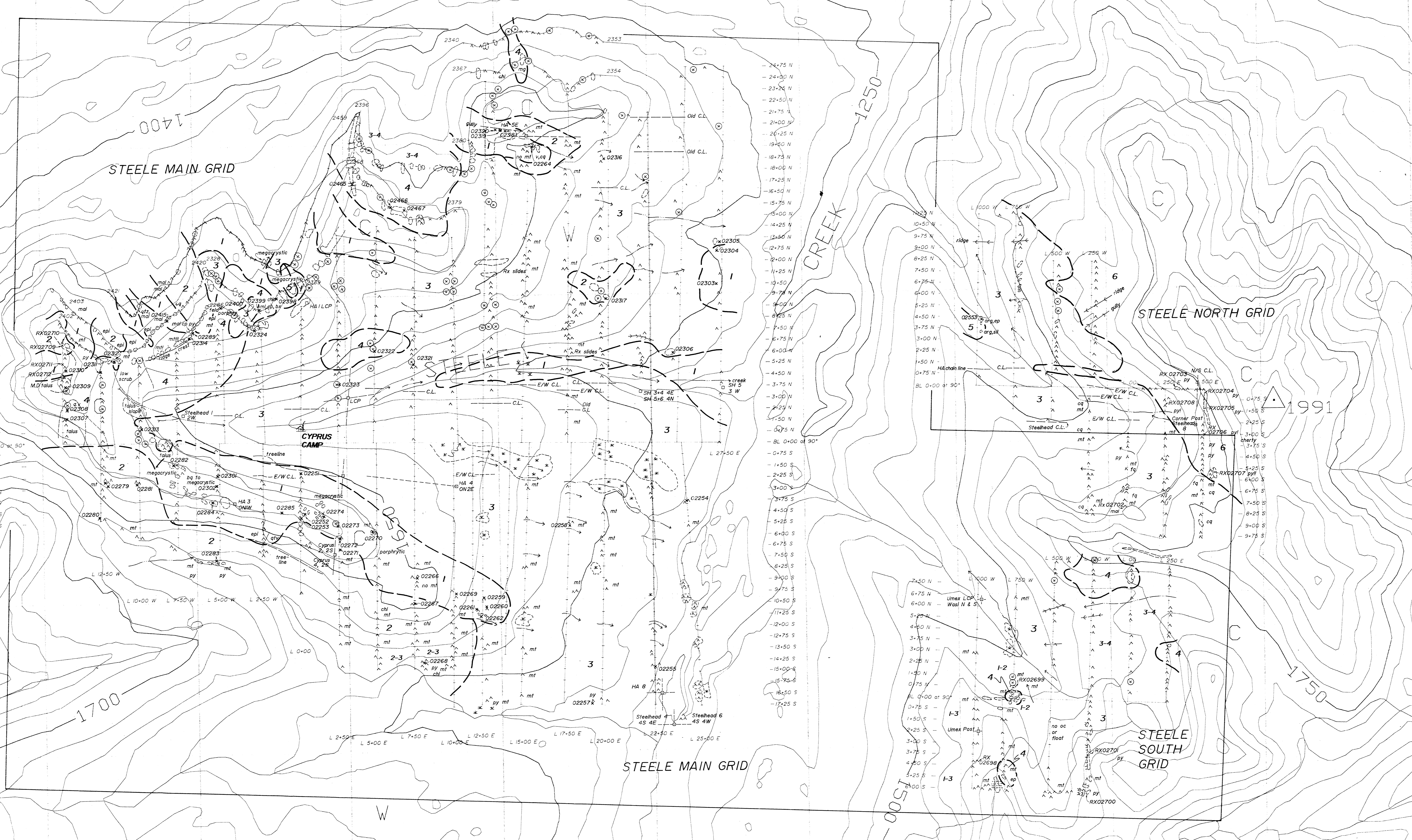
21420

CYPRUS GOLD (CANADA) LTD.

STEELE PROPERTY

NTS 93N/14



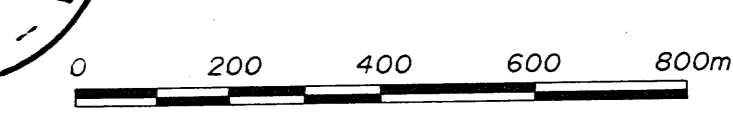
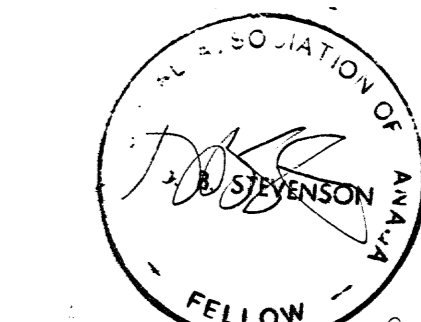


LEGEND

- 1** LEUCOCRATIC SYENITE
Fine to coarse grained to megacrystic massive to porphyritic light to bright orange-pink biotite-hornblende-bearing leucocratic syenite, minor limonite and chlorite alteration, locally intense potassic alteration, minor to locally abundant disseminated py, cp, mal, az, bn, minor to moderate disseminated mt.
- 2** MESOCRATIC SYENITE
Medium to coarse grained medium to dark orange-pink biotite-hornblende mesocratic syenite, minor epidote and chlorite alteration, minor disseminated mt.
- 3** MONZONITE
Medium grained massive light to medium grey biotite-hornblende monzonite, rare disseminated cp, minor disseminated mt.
- 4** MONZODIORITE
Medium grained massive equigranular dark grey biotite-hornblende-rich monzodiorite, minor to moderate chlorite alteration, minor to moderate mt.
- 5** DIORITE
Fine grained massive equigranular dark grey-black biotite-hornblende-rich diorite, salt and pepper texture, moderate to abundant mt.
- 6** MAFIC VOLCANICS
Fine grained massive to moderately schistose dark black-green cherty andesite, moderate to abundant disseminated py, no mt.

SYMBOLS

- T** Jointing, vertical/inclined
- S** Shearing
- Outcrop, possible outcrop, float
- Claim post
- x** Rock sample
- ||** Geological contact known/approximate
- Mineralization** weak, moderate, strong pyrite (py), chalcopyrite (cp), magnetite (mal), quartz (qtz), apatite (ap), barite (br), molybdenum (mo)
- Alteration** weak, moderate, strong, chlorite (chl), epidote (ep), limonite (lim), potassic (pot)



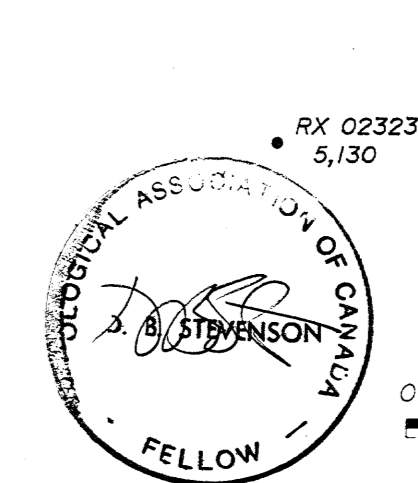
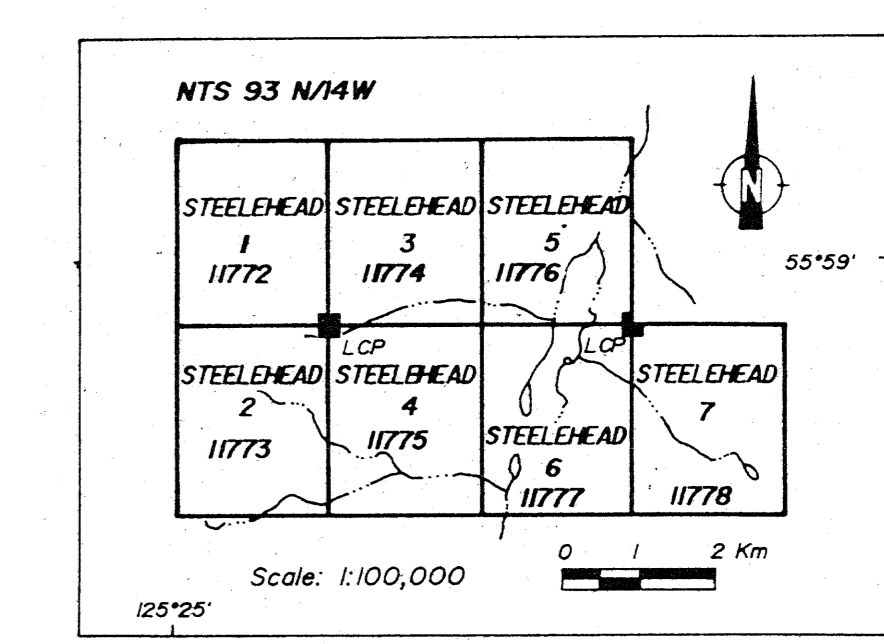
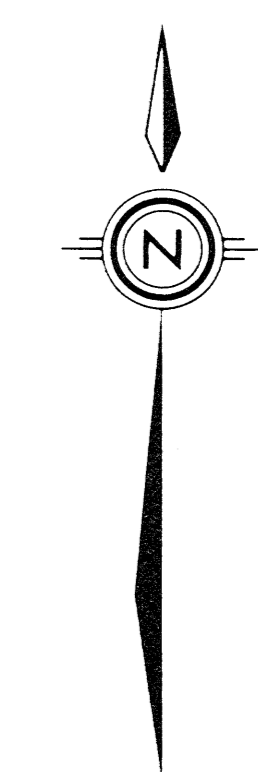
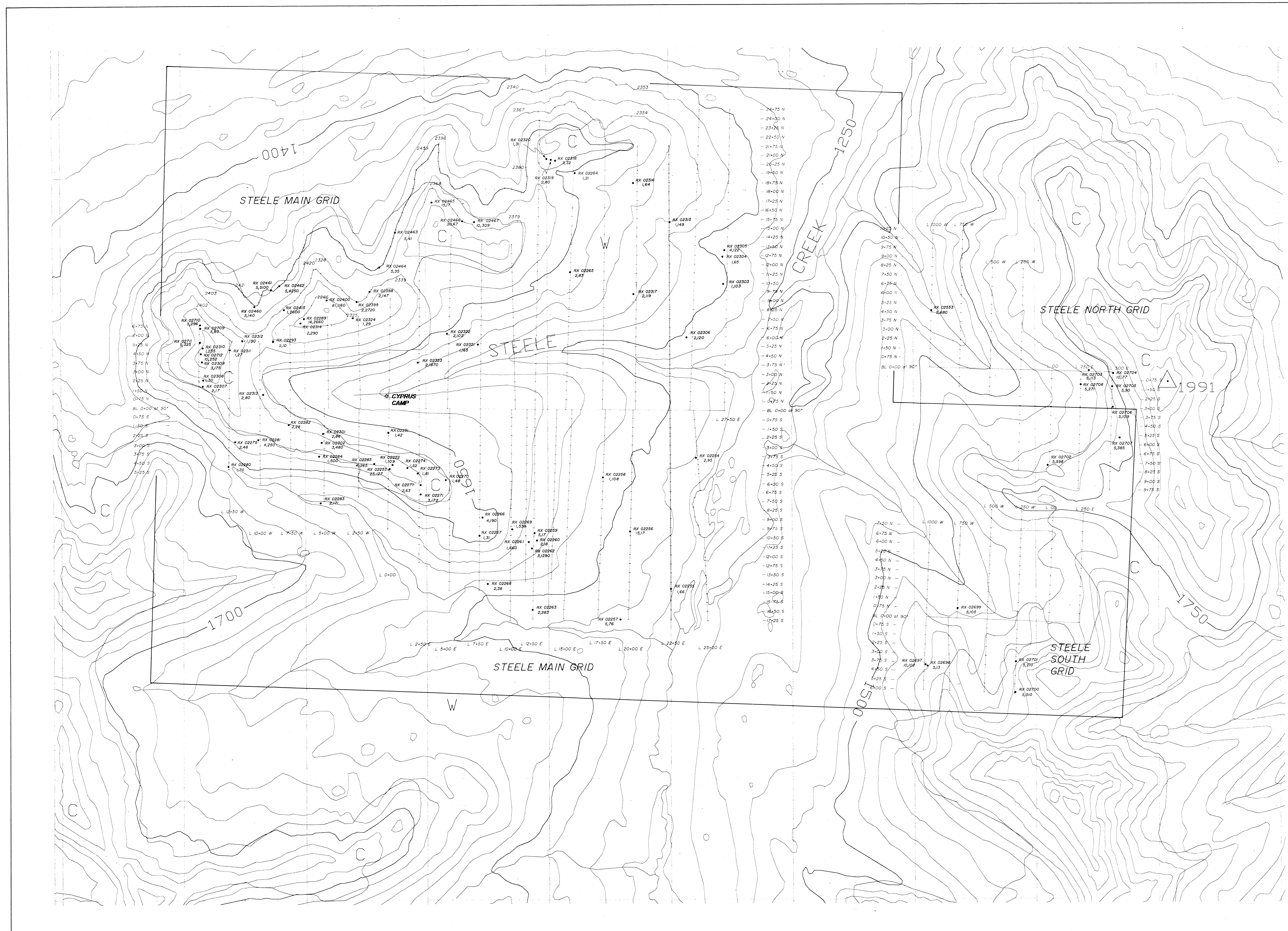
GEOLOGICAL BRANCH ASSESSMENT REPORT

21,420
 21,420
 2

CYPRUS GOLD
 (Canada) Ltd.

HOGEM PROJECT - STEELE PROPERTY
GEOLOGY

NTS 93N/4
 DRAWN BY D. STEVENSON SCALE 1:10,000
 DATE OCT 1990

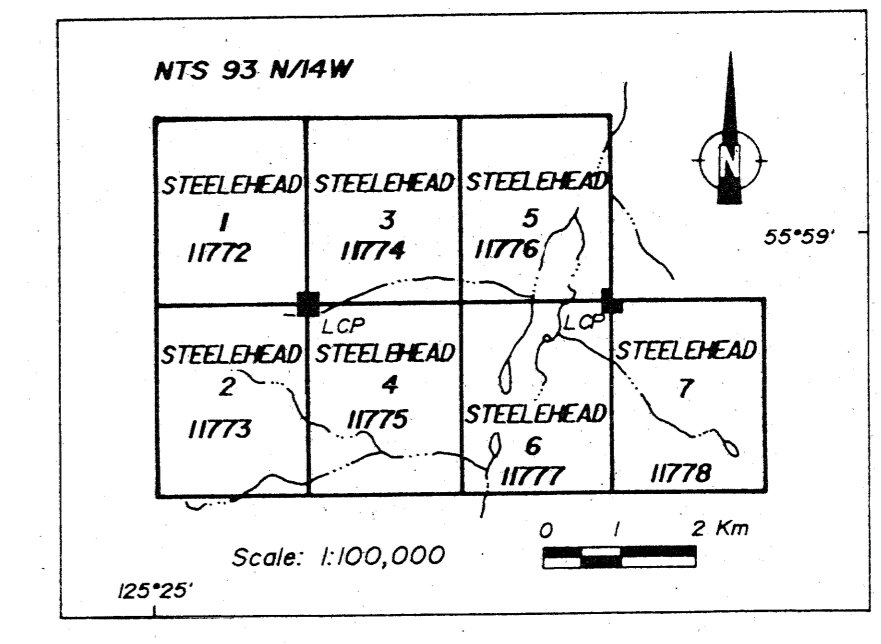
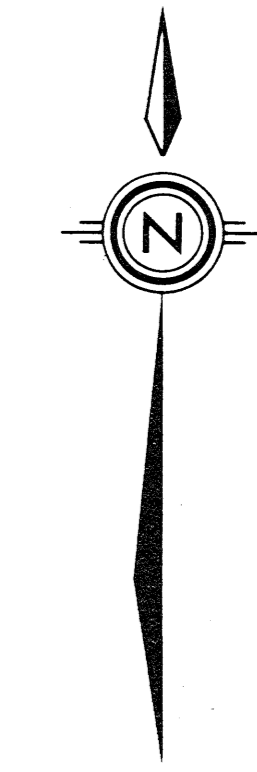
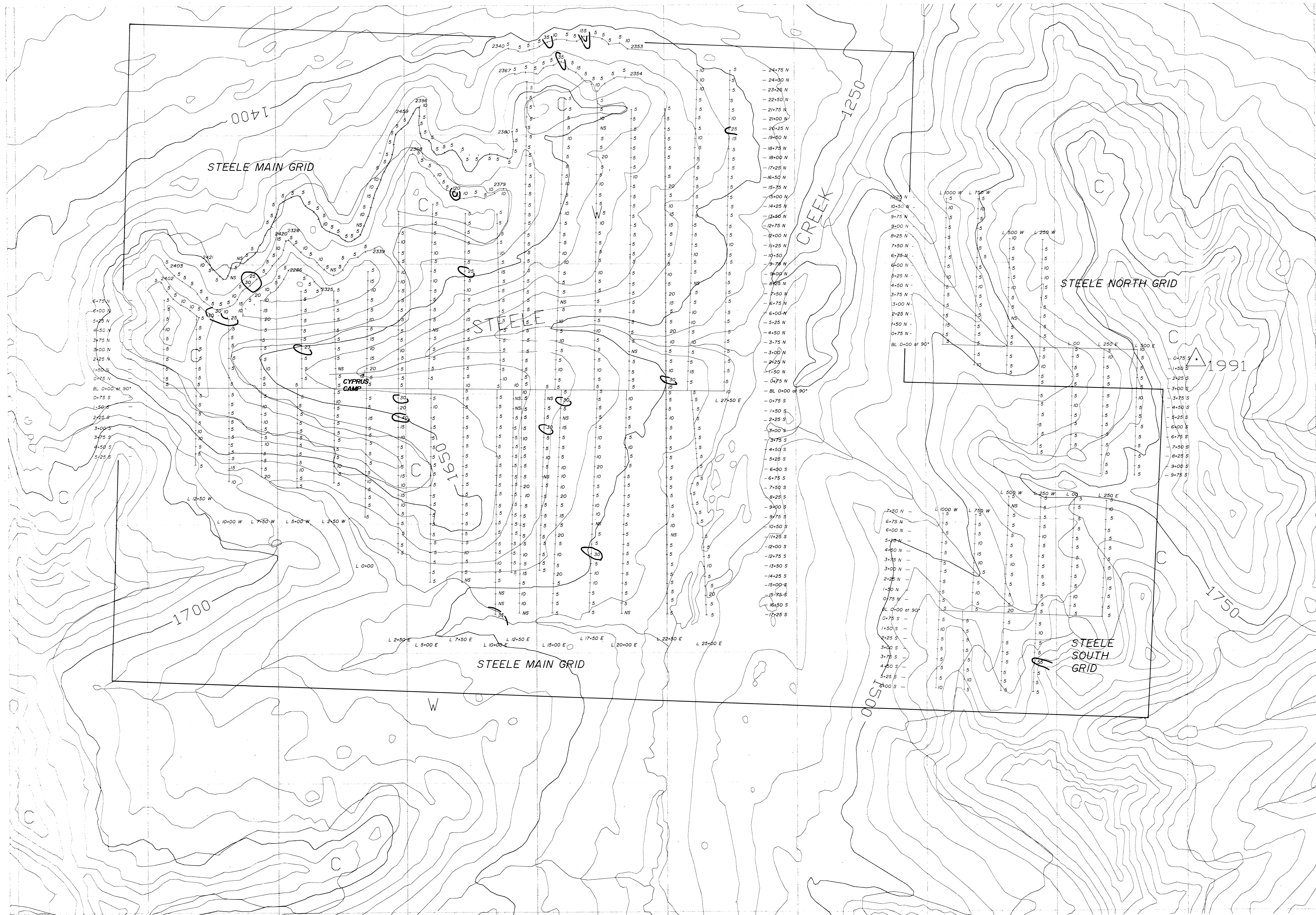


LEGEND
 RX 02263 5,130 Rock Sample Au (ppb), Cu (ppm)

21,420
 11/2/01
 2.

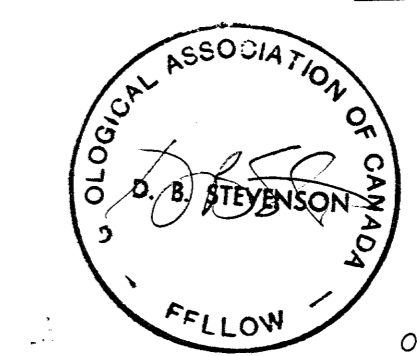
CYPRUS GOLD (Canada) Ltd.	
HORM PROJECT STEELE PROPERTY	
Au-Cu in Rocks	
DRAWN BY: D. STEVENSON	SCALE: 1:10,000
DATE: NOV 1990	MAP No: 2

**GEOLOGICAL BRANCH
 ASSESSMENT REPORT**



LEGEND

- ≥ 100 ppb Au
- ≥ 25 ppb Au



CYPRUS GOLD
(Canada) Ltd.

HOSEM PROJECT - STEELE PROPERTY

Au (ppb) in Soils

NTS 93/N/4

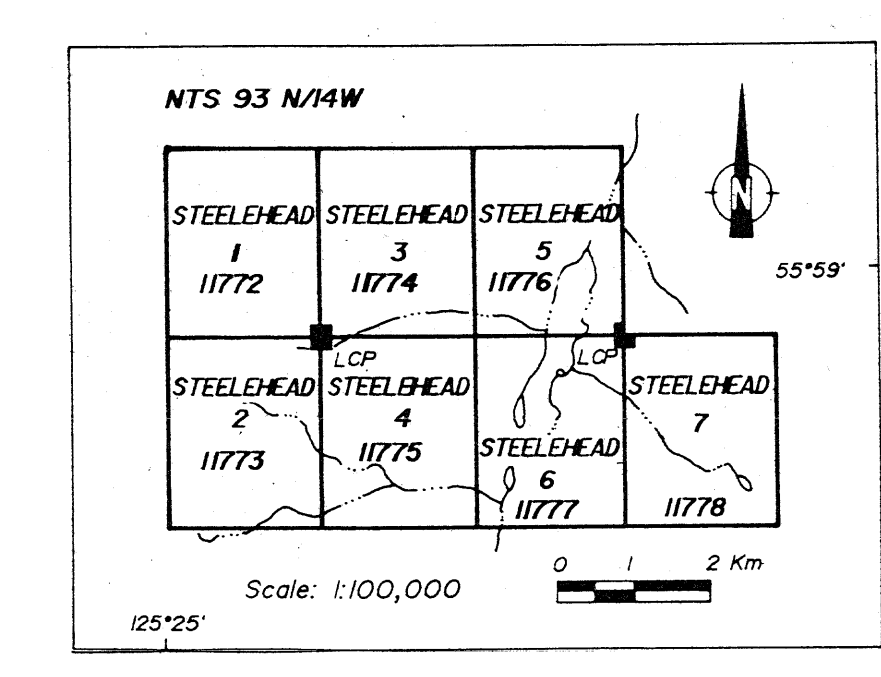
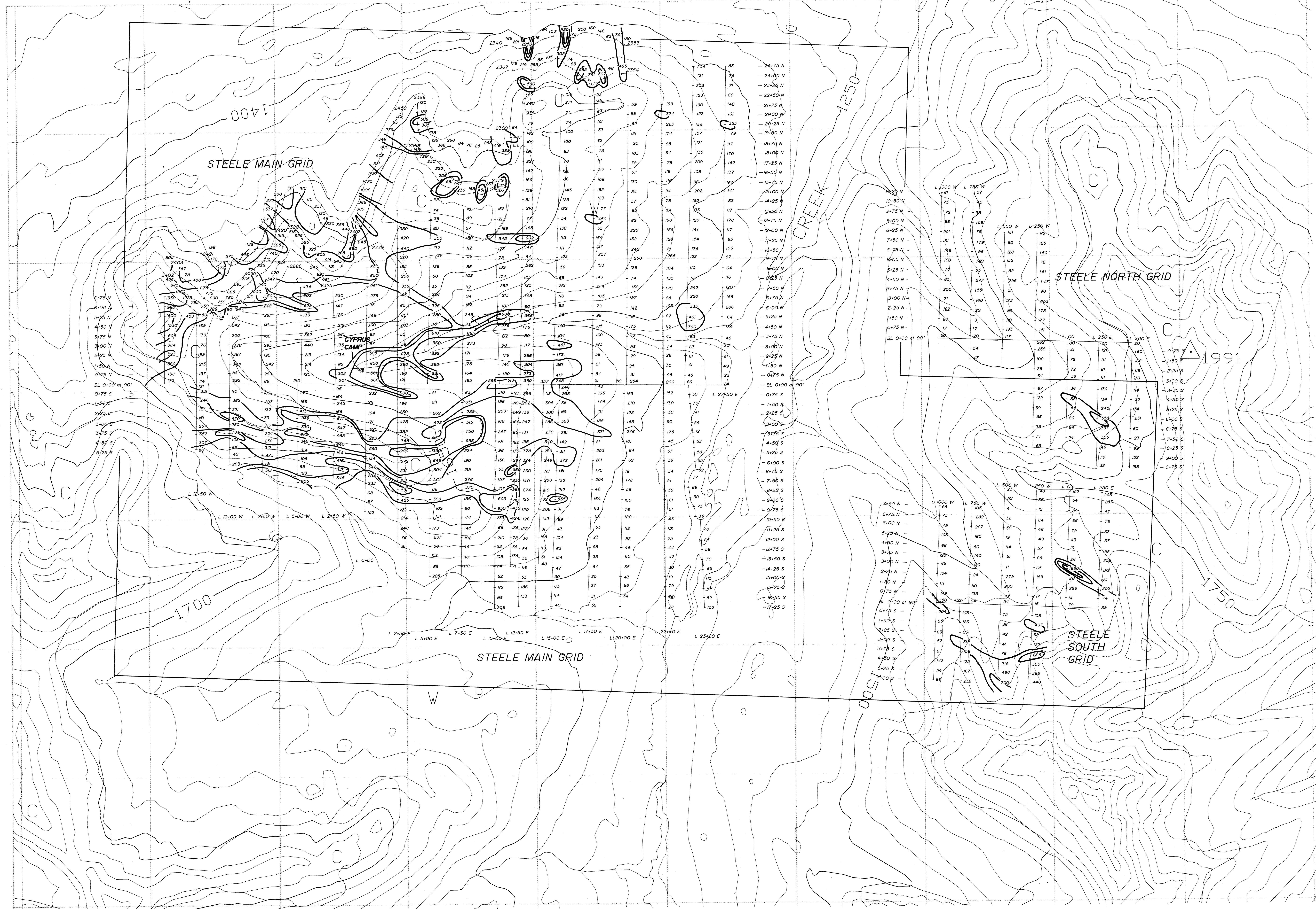
DRAWN BY: D. STEVENSON SCALE: 1:10000

DATE: NOV. 1990 MAP No. 3

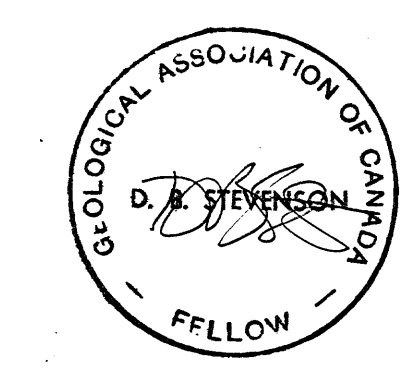
GEOLOGICAL BRANCH
ASSESSMENT REPORT

21,420

2.



- LEGEND**
- ≥ 1000 ppm Cu
 - $\geq 500-999$ ppm Cu
 - $\geq 300-499$ ppm Cu
 - ≤ 299 ppm Cu



GEOLOGICAL BRANCH
ASSESSMENT REPORT

21,420

CYPRUS GOLD
(Canada) Ltd.

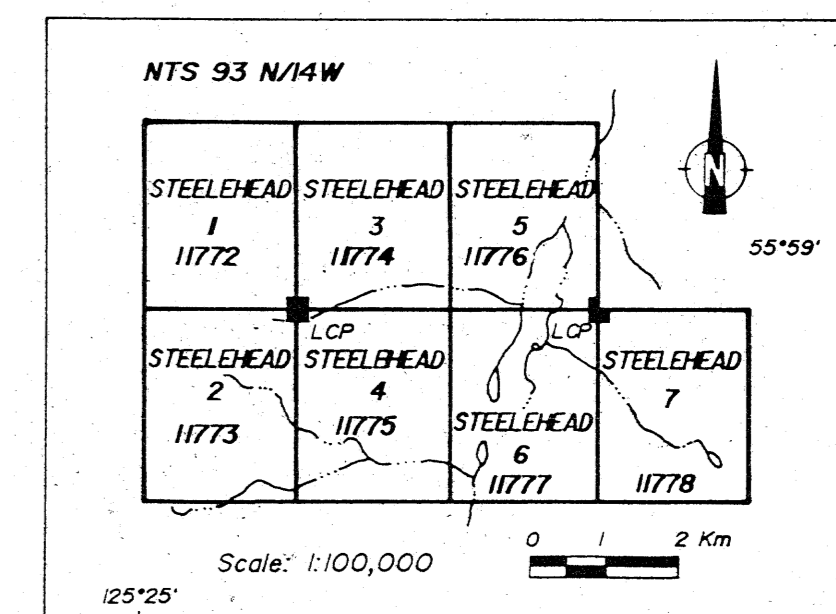
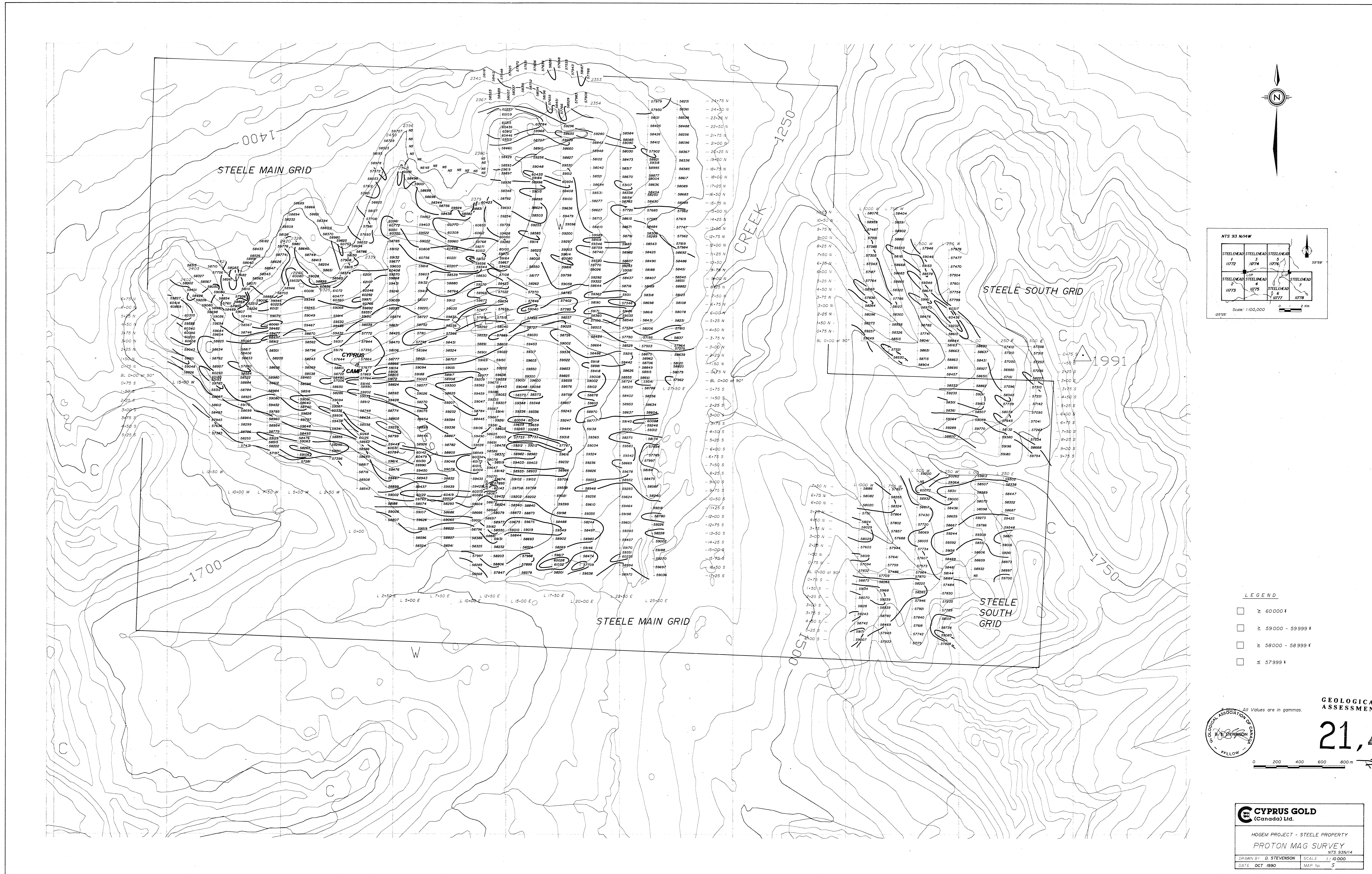
HOGEM PROJECT - STEELE PROPERTY

Cu (ppm) in Soils

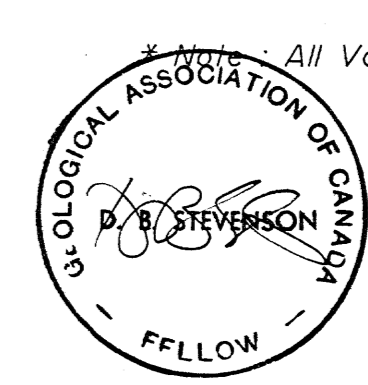
NTS 93NW/4W

DRAWN BY: D. STEVENSON SCALE: 1:100,000

DATE: NOV. 1990 MAP No. 4

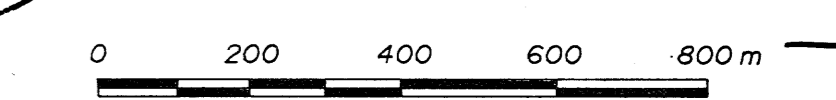


- LEGEND**
- ≥ 60000
 - ≥ 59000 - 59999
 - ≥ 58000 - 58999
 - ≤ 57999



GEOLOGICAL BRANCH
ASSESSMENT REPORT

21,420



CYPRUS GOLD
(Canada) Ltd.

HOGEM PROJECT - STEELE PROPERTY
PROTON MAG SURVEY
NTS 93N/4W

DRAWN BY: D. STEVENSON SCALE: 1:10,000
DATE: OCT 1990 MAP No: S