

ARIS SUMMARY SHEET

District Geologist, Nelson

Off Confidential: 92.08.22

ASSESSMENT REPORT 22276

MINING DIVISION: Nelson

PROPERTY: Grand Prize  
LOCATION: LAT 49 25 30 LONG 117 10 12  
UTM 11 5474497 487671  
NTS 082F06W  
CAMP: 004 Ymir - Nelson Area  
CLAIM(S): Grand Prize (L.3592)  
OPERATOR(S): Jordan, R.P.  
AUTHOR(S): Jordan, R.P.  
REPORT YEAR: 1991, 19 Pages  
KEYWORDS: Jurassic, Elise formation, Augite porphyry  
WORK  
DONE: Prospecting  
PROS 15.0 ha

LOG NO: 92 04 27 K
ACTION:
FILE NO:

**GRAND PRIZE CLAIM**

REPORT ON MAPPING AND  
GEOCHEMICAL SAMPLING  
GRAND PRIZE CLAIM  
NELSON MINING DIVISION  
NTS MAPSHEET 82F/6W  
49°25'30"N 117°10'12"W

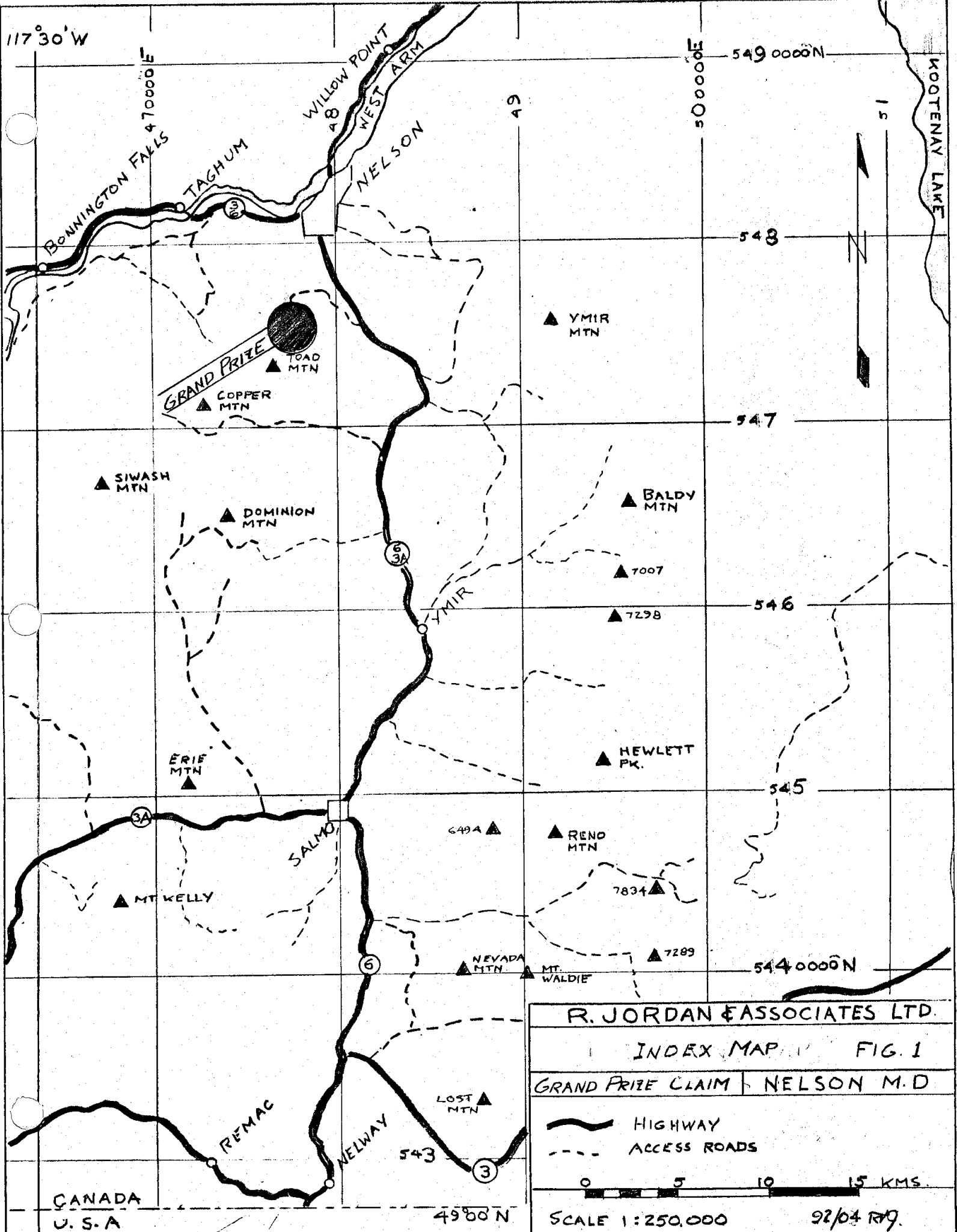
AUTHOR: R. JORDAN, P. ENG.

OPERATOR: R. JORDAN

OWNERS: R. JORDAN 50%, W. R. READER 50%

**GEOLOGICAL BRANCH  
ASSESSMENT REPORT**

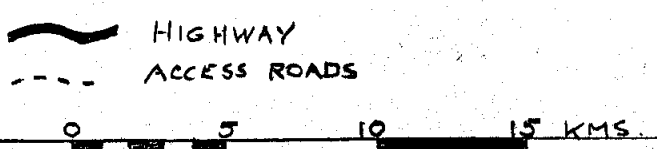
**22,276**



R. JORDAN & ASSOCIATES LTD.

INDEX MAP FIG. 1

GRAND PRIZE CLAIM NELSON M.D.



SCALE 1:250,000

92/04 R79

## TABLE OF CONTENTS

		page
1.0	SUMMARY	4
2.0	INTRODUCTION	4
	2.1 Location, Access and Physiography	4
	2.2 Claim description and previous history	5
	2.3 1991 Exploration	5
3.0	GEOLOGY	6
	3.1 Regional geology	6
	3.2 Claim geology	6
4.0	GEOCHEMISTRY	7
	4.1 Field program	7
	4.2 Analytical techniques	7
	4.3 Assay results	7
5.0	CONCLUSIONS AND RECOMMENDATIONS	7
6.0	REFERENCES	8
7.0	STATEMENT OF EXPENDITURES	9
8.0	AUTHOR'S QUALIFICATIONS	9

## LIST OF TABLES AND FIGURES

			Page
FIG. 1	INDEX MAP	1:250,000	Frontispiece
FIG. 2	CLAIM LOCATION MAP	1:50,000	Pocket
FIG. 3	GEOLOGICAL MAP	1:50,000	"
FIG. 4	ELEVATIONS, SAMPLE AND SURVEY LOCATIONS	1:50,000	
FIG. 5	MAP OF SILVER VALUES	"	"
FIG. 6	MAP OF COPPER VALUES	"	"
FIG. 7	MAP OF LEAD VALUES	"	"
FIG. 8	MAP OF ZINC VALUES	"	"
TABLE I	SAMPLE LOCATIONS AND DESCRIPTIONS		10
TABLE II	LIST OF ASSAY RESULTS		11

## 1.0 SUMMARY

The Grand Prize is a reverted 2 post crown grant claim which was purchased at the March 15th, 1990 Nelson, B.C. sale for a bid of \$75.00. The claim is centred about 250 meters north of the Silver King vein and was staked in the 1890s. The location is on the north-east side of Toad Mountain 6.5 kilometers south of Nelson at an elevation of 1750 meters. The claim is bisected by the old Silver King tram right-of-way which can still be identified on recent air photos. Summer access is via nine kilometres of steep, rough, logging roads up the north side of Gold Creek from Highway 6. The old Silver King workings lie immediately south of the claim and a portion of the waste dump from the NO.5 adit is on the southern part of the claim.

Exploratory soil sampling was undertaken along the south half of the claim, north of the No.5 adit waste dump, to determine the feasibility of this technique in what may have been an area of severe near surface soil disruption by mining activities. Fortunately, operations in this pre-bulldozer era did not appear to have had much effect on the claim. A limited amount of geological mapping was carried out along the upper and lower mine access roads adjacent to the claim boundaries, and on a traverse to the Nos.4 and 5 adits.

Lack of adequate survey control is a problem and the mapped position of the claim may be subject to error even though a considerable amount of time and effort was expended in order to define the claim position. Our efforts to obtain a survey of the old workings in relation to claim boundaries from the operator, CM&S, did not meet with any success. The closest survey control we could find was on a map, accompanying AR 12,611, which showed approximate claim outlines of the Silver King Group in relation to the old workings, which the authors stated was "assumed to be correct" but which we found to be rather sketchy.

## 2.0 INTRODUCTION

This report covers assessment work done on the Grand Prize claim on July 19th and 20th, 1991, by R. Jordan, W.R. Reader and P. Reader.

### 2.1 Location, access and physiography

The Grand Prize claim is on the steep west facing side of a north-north-easterly striking ridge of Toad Mountain east of Giveout Creek. Elevations vary from 1700 to 1780 metres. None of the original survey posts were found nor is it likely that any have survived intact. The mapped position of the claim has been determined using the position plotted on the NTS 1:50,00 topog sheet for 82F6 and

Department of Mines claim maps, air photos (BC 88046 Nos.15 and 16, EMR A22007-49) which show the old tram right of way and the "stub" running west at UTM 5475165 N as well as the Silver King workings and access roads and trails, and a 1:20,000 BC Forest Service map which showed crown grant claim boundaries, clear cuts, access roads, and UTM coordinates. Sample locations were tied by a Brunton and hipchain traverse to the Nos.4 and 5 adits shown on the map accompanying AR 12611, and later adjusted to fit air photos.

Summer access is provided by nine kilometres of rough, steep logging roads starting from Highway 6 between Gold Creek and Cottonwood Lake, 6.5 kilometres south of Nelson, and extending through the west side of the claim and on through the Silver King workings and across Giveout Creek.

Topography is relatively steep and the claim is covered by dense bush and second growth spruce. Outcrops are relatively common. Access to the claim is provided by two narrow rough north-south logging and mine access roads.

## 2.2 Claim description and previous history

The Grand Prize claim is located in the Nelson Mining Division in map area 82F/6W. R. Jordan and W.R. Reader are co-owners. R. Jordan is the Operator. Recording data is listed below:

CLAIM NAME	UNITS	REC.NO.	STAKING DATE	AQUISITION
Grand Prize	1(fract.)	6106	189- ? <u>APRIL 26 1894</u>	Mar.15 1990

The claim is on the central part of the north boundary of the Silver King Group which was originally owned and operated by Hall Mines Ltd, subsequently purchased and operated by the Consolidated Mining and Smelting Co., and most recently optioned by Inter Globe Resources Ltd. of Vancouver. There has been little or no activity on the Silver King Property since the late 1960s. More recently trenching, sampling and diamond drilling have been carried out on the Great Western and Shaft properties approximately two kilometres to the north-west and north-east respectively, of the Grand Prize claim. A number of old trenches, a caved in adit and signs of relatively recent soil sampling were found on the Daylight-Berlin property about 1 kilometre to the north-east of the claim. This latter property produced intermittently between 1937 and 1949 with a total recorded production of 327 tonnes of ore grading 15.2 grams/tonne Ag and 27 grams/tonne Au (Minfile 082FSW 175). There is no sign of any exploration activity, recent or otherwise, on the Grand Prize claim.

## 2.3 1991 Exploration

This work was done during two days on July 19th and 20th. A high percentage of this time was spent on

Brunton and hipchain traverses to tie in the tramline right-of-way and the Silver King nos. 4 and 5 adits in order to establish a reasonable location for the Grand Prize claim. Six soil samples and one rock chip sample were collected above the lower access road which traverses the west side of the claim. A geological traverse was run on the upper access trail adjacent to the east boundary.

### 3.0 GEOLOGY

#### 3.1 Regional geology

Areal geology is described, in detail, by Hoy and Andrew- Open File 1989-11, and in descriptions of the Great Western, Shaft and Cat properties- Exploration in B.C. 1988 pps. B15-28. Steep south-westerly dipping, intensely sheared and altered volcanics of the Lower Jurassic Rossland Group/Elise Formation (units Je1 and Je4) occur on the north-westerly striking north limb of the Hall Creek Syncline. These rocks are locally intruded by dikes and stocks of plagioclase porphyries related to Lower/middle Jurassic Silver King intrusions (unit Jsk). A number of the Copper/gold properties in the area are hosted by Lower Elise formation mafic volcanics in close association with the Silver King intrusives and/or the Nelson Batholith. The Grand Prize claim is located immediately north of the Silver King vein within the Silver King Shear and on the north side of the Hall syncline.

#### 3.2 Claim geology.

Outcrops on and immediately adjacent to the claim consist of fine to medium grained, altered, light to dark grey and black schistose, occasionally massive, augite and plagioclase volcanics of undivided Lower and Upper Elise Formation flows (units Je1, Je4). Two feldspar porphyry dikes (unit Jsk) were seen on the traverse along the east side of the claim. Other than some occasional very fine disseminated pyrite in dark grey siliceous schistose rocks exposed in a trench just off the NE corner of the property and in narrow quartz filled bedding plane fractures in a rock chip sample at RC-GP5, no obvious mineralization was seen on the claim. Assays of the latter sample were unremarkable except for a slightly anomalous copper assay of 202 ppm.

The claim occupies a position close to the northern edge of the Silver King Shear and less than one kilometre north-west of an extensive area of Silver King intrusives. Strike and dip of the sheared Elise Formation rocks range from N35°W to N55°W and from 40° to 85° south-west.



## 4.0 GEOCHEMISTRY

### 4.1 Field program

Six soil samples were taken north-south above the lower access road. Although we suspected that there was a high probability of soil disturbance during the Silver King mining operation and because of the proximity of the old tramline, in fact we found a good distribution of A, B, and colluvium shale layers all apparently undisturbed along the sample line. Soil samples were taken from the 'B' layer at depths ranging from 5 to 18 centimetres. One rock chip sample was collected across 1 metre of dense dark grey schist with fine inter layer quartz stringers accompanied by sparse pyrite mineralization.

### 4.2 Analytical techniques.

Samples were assayed at Chemex Labs Ltd. in Vancouver utilizing their SP-4 ICP-32 geochem package which includes a fire assay with AA finish of a 10 gram sample and with a lower detection limit of 5 ppb. Samples were dried and ring sieved to a 90% -150 mesh then split. The ICP-32 trace level multi-element package uses a nitric-aqua regia digestion process not effective for acid resistant minerals but is considered adequate for major gold and base metal indicators in a reconnaissance geochem project.

### 4.3 Assay results

None of the samples showed gold values greater than 5ppb. Overall, none of the assay results were considered to be anomalous with the exception of slightly high values for copper and silver at GP-3 and for copper at RC-GP5.

## 5.0 CONCLUSIONS AND RECOMMENDATIONS

Because of the lack of any obvious mineralization in outcrop and absence of any geochem anomalies, only minimal additional work can be recommended. Now that claim boundary positions have been established within reasonable limits soil sampling should be extended north of station GP-6 to a point at least 100 metres north of the boundary and another parallel line run 70 metres east north of the waste dump to a point beyond the claim border. This would involve another 20 or so samples. Also, chip samples should be taken from any outcrops or trenches found. The portion of the waste dump on the south part of the claim should be sampled as well.

## 6.0

### REFERENCES

1. H.W. Little. GSC Memoir 308, Nelson Map Area West Half, British Columbia (82F W1/2)
2. T. Hoy and K. Andrew. The Rossland Group, Nelson Map Area, South Eastern British Columbia (82F6). BC Min. Res. Div., Geological Survey Branch, Geological Fieldwork 1988 pp.33-43, and Open File 1989-11.
3. BC Minfile 082FSW176 (Daylight-Berlin)
4. BC Minfile 082FSW175 (Silver King)
5. T. Hoy and K. Andrew. Great Western Group, Elise Formation, Rossland Group. Exploration in British Columbia 1988 pp B15-B19

**7.0 STATEMENT OF EXPENDITURES**

-4WD transport Salmo to site 2days x 85kms @ \$0.30	54.00
-Labour 22 hours @ \$13.25	291.50
-Supervision, Report Preparation	350.00
-Assay costs 7x \$14.85	103.95
<b>Total</b>	<b>\$799.45</b>

**8.0 AUTHOR'S QUALIFICATIONS**

I, Robert Jordan, resident at RR 1, Priddis, Alberta, certify that I am the current holder of Professional Engineers and Geoscientists certificate of registration No.4707 (Professional Engineer, Geological).

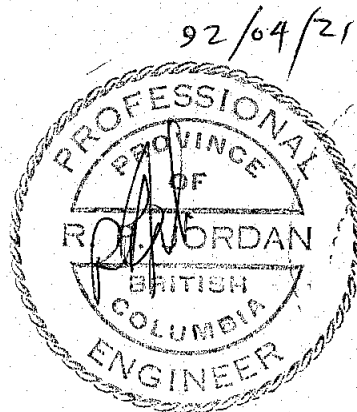


TABLE I

SAMPLE LOCATIONS AND DESCRIPTIONS

<u>Sample No.</u>	<u>UTM Coordinates</u> metres		<u>Elev.</u> metres	<u>Type</u>	<u>Depth</u> cms.	<u>Description</u>
GP-1	5474388N	477944E	1732	S/B	6-15	Rusty med.brwn.soil
GP-2	413	944	1728	"	5-15	Med.brwn w.gry schist coll.
GP-3	438	946	1725	"	5-18	Drk.brwn.dry
GP-4	463	948	1722	"	3-18	med.brwn.w.gry schist coll.
GP-5	488	950	1725	"	6-18	med.brwn.
GP-6	5474513N	477950E	1717	"	8-18	med.brwn.w.gry sch.coll.
RC-GP5	5474486N	477952E	1725	RC		Dense drk.gry.schist w.thin qtz. stringers in shear plane fractures w.occassional fine py min.



# Chemex Labs Ltd.

Analytical Chemists \* Geochemists \* Registered Assayers  
 212 Brooksbank Ave., North Vancouver  
 British Columbia, Canada V7J 2C1  
 PHONE: 604-984-0221

To: JORDAN, R. & ASSOCIATES LTD.

R.R.1  
 PRIDDIS, AB  
 TOL 1W0

Project: N.C.  
 Comments: CC: W.R. READER

Page Number :1-A  
 Total Pages :1  
 Certificate Date: 16-AUG-91  
 Invoice No. :19119351  
 P.O. Number :

## CERTIFICATE OF ANALYSIS A9119351

SAMPLE DESCRIPTION	PREP CODE		Au ppb	Ag ppm	Al %	As ppm	Ba ppm	Be ppm	Bi ppm	Ca %	Cd ppm	Co ppm	Cr ppm	Cu ppm	Fe %	Ga ppm	Hg ppm	K %	La ppm	Mg %	Mn ppm
	205	234	FA+AA																		
91-GP-1	205	234	< 5	1.2	3.02	5	170	< 0.5	< 2	0.50	< 0.5	18	112	106	5.09	< 10	< 1	0.20	10	1.11	650
91-GP-2	205	234	< 5	< 0.2	2.94	10	140	< 0.5	< 2	0.27	< 0.5	24	79	77	5.89	< 10	< 1	0.19	10	1.15	1350
91-GP-3	205	234	< 5	0.8	2.73	20	170	< 0.5	< 2	0.69	< 0.5	21	85	252	5.20	< 10	< 1	0.18	10	1.11	1735
91-GP-4	205	234	< 5	< 0.2	3.10	35	190	< 0.5	< 2	0.34	< 0.5	16	81	60	4.79	< 10	< 1	0.16	10	0.81	1330
91-GP-5	205	234	< 5	< 0.2	2.49	25	140	< 0.5	< 2	0.37	< 0.5	18	83	75	5.60	< 10	< 1	0.18	10	1.04	920
91-GP-6	205	234	< 5	< 0.2	3.44	30	210	< 0.5	< 2	0.66	< 0.5	20	62	115	5.21	< 10	< 1	0.16	10	1.70	1930
91-RC-4	205	234	< 5	< 0.2	2.61	< 5	130	< 0.5	< 2	3.08	< 0.5	21	9	202	5.41	< 10	< 1	0.24	10	1.95	800



# Chemex Labs Ltd.

Analytical Chemists \* Geochemists \* Registered Assayers  
 212 Brooksbank Ave., North Vancouver  
 British Columbia, Canada V7J 2C1  
 PHONE: 604-984-0221

To: JORDAN, R. & ASSOCIATES LTD.

R.R.1  
 PRIDDIS, AB  
 TOL 1W0

Project: N.C.  
 Comments: CC: W.R. READER

Page Number :1-B  
 Total Pages :1  
 Certificate Date: 16-AUG-91  
 Invoice No. :19119351  
 P.O. Number :

## CERTIFICATE OF ANALYSIS A9119351

SAMPLE DESCRIPTION	PREP CODE		Mo ppm	Na %	Ni ppm	P ppm	Pb ppm	Sb ppm	Sc ppm	Sr ppm	Ti %	Tl ppm	U ppm	V ppm	W ppm	Zn ppm
	205	234														
91-GP-1	205	234	< 1	0.05	22	700	14	< 5	5	83	0.15	< 10	< 10	106	< 10	76
91-GP-2	205	234	< 1	0.03	16	1610	18	< 5	4	43	0.09	< 10	< 10	96	< 10	102
91-GP-3	205	234	< 1	0.03	20	1640	24	< 5	4	95	0.07	< 10	< 10	87	< 10	144
91-GP-4	205	234	< 1	0.04	14	1230	16	< 5	4	60	0.16	< 10	< 10	88	< 10	108
91-GP-5	205	234	< 1	0.03	20	1710	18	< 5	4	55	0.12	< 10	< 10	96	< 10	104
91-GP-6	205	234	< 1	0.02	19	1540	14	< 5	5	129	0.19	< 10	< 10	121	< 10	116
91-RC-4	205	234	< 1	0.04	7	2360	8	< 5	3	324	0.01	< 10	< 10	96	< 10	80

**GEOLOGICAL BRANCH  
ASSESSMENT REPORT**

\* GRID NORTH 0° WEST

**22,276**

5475000 N

5475000 N

5474500 N

5474500 N

5474000 N

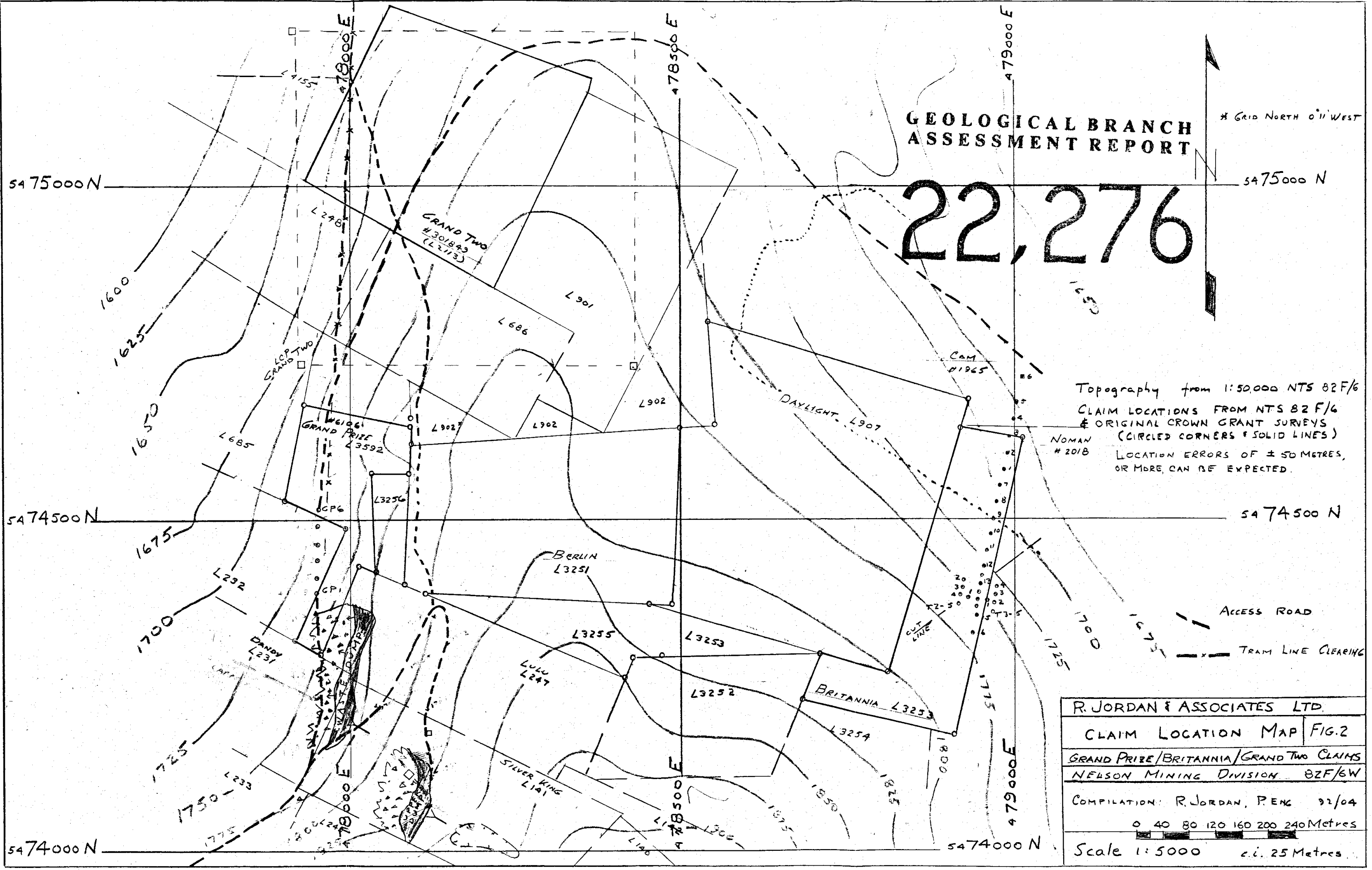
5474000 N

Topography from 1:50,000 NTS 82 F/6  
 CLAIM LOCATIONS FROM NTS 82 F/6  
 & ORIGINAL CROWN GRANT SURVEYS  
 (CIRCLED CORNERS & SOLID LINES)  
 NOMAN # 2018  
 LOCATION ERRORS OF ± 50 METRES,  
 OR MORE, CAN BE EXPECTED.

ACCESS ROAD

TRAM LINE CLEARING

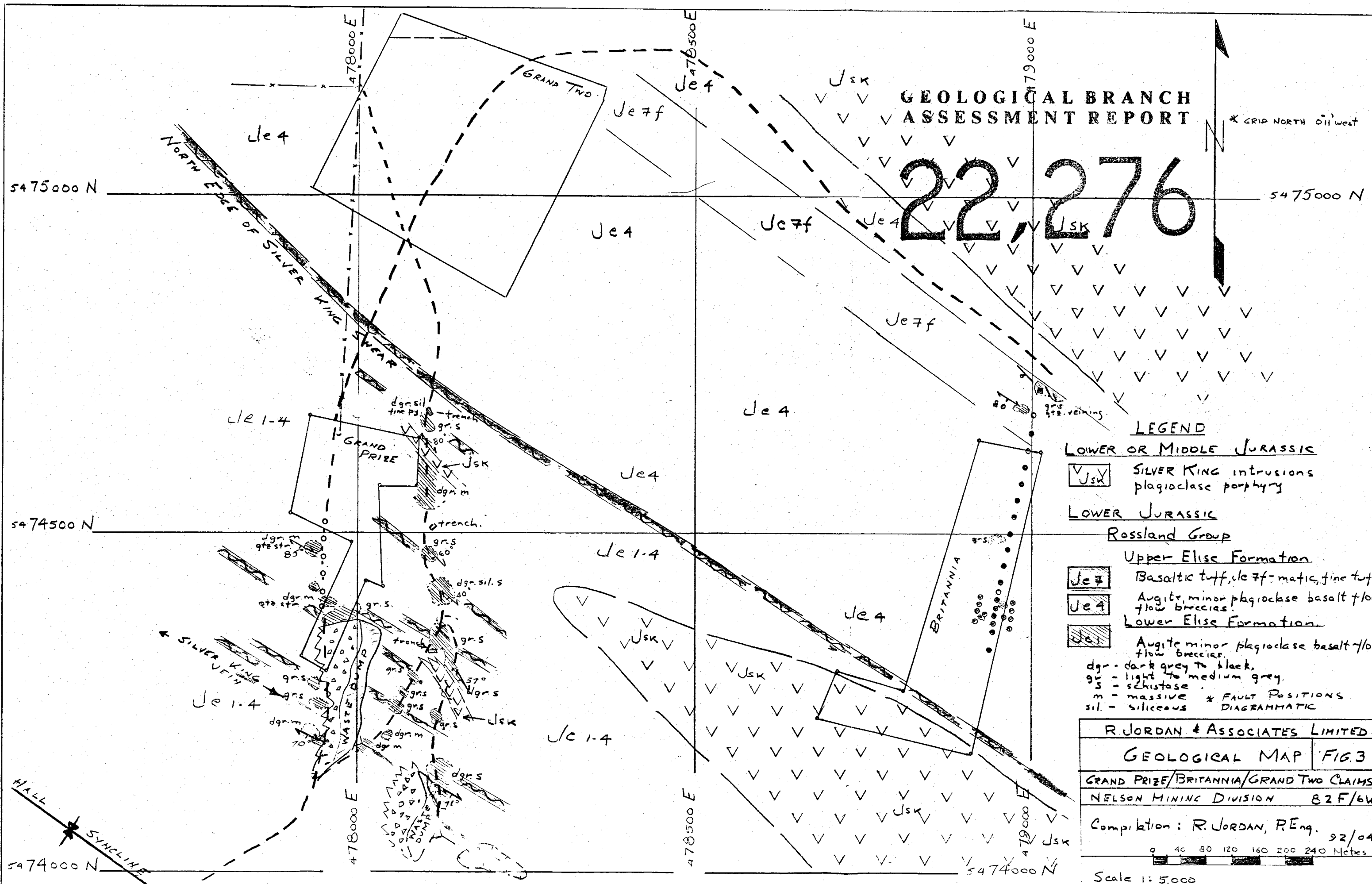
R. JORDAN & ASSOCIATES LTD.	
CLAIM LOCATION MAP	FIG. 2
GRAND PRIZE/BRITANNIA/GRAND TWO CLAIMS	
NELSON MINING DIVISION 82F/6W	
COMPILATION: R. JORDAN, PENG 92/04	
0 40 80 120 160 200 240 Metres	
Scale 1:5000	c.i. 25 Metres



**GEOLOGICAL BRANCH  
ASSESSMENT REPORT**

**22,276**

\* GRID NORTH Oil West



**LEGEND**

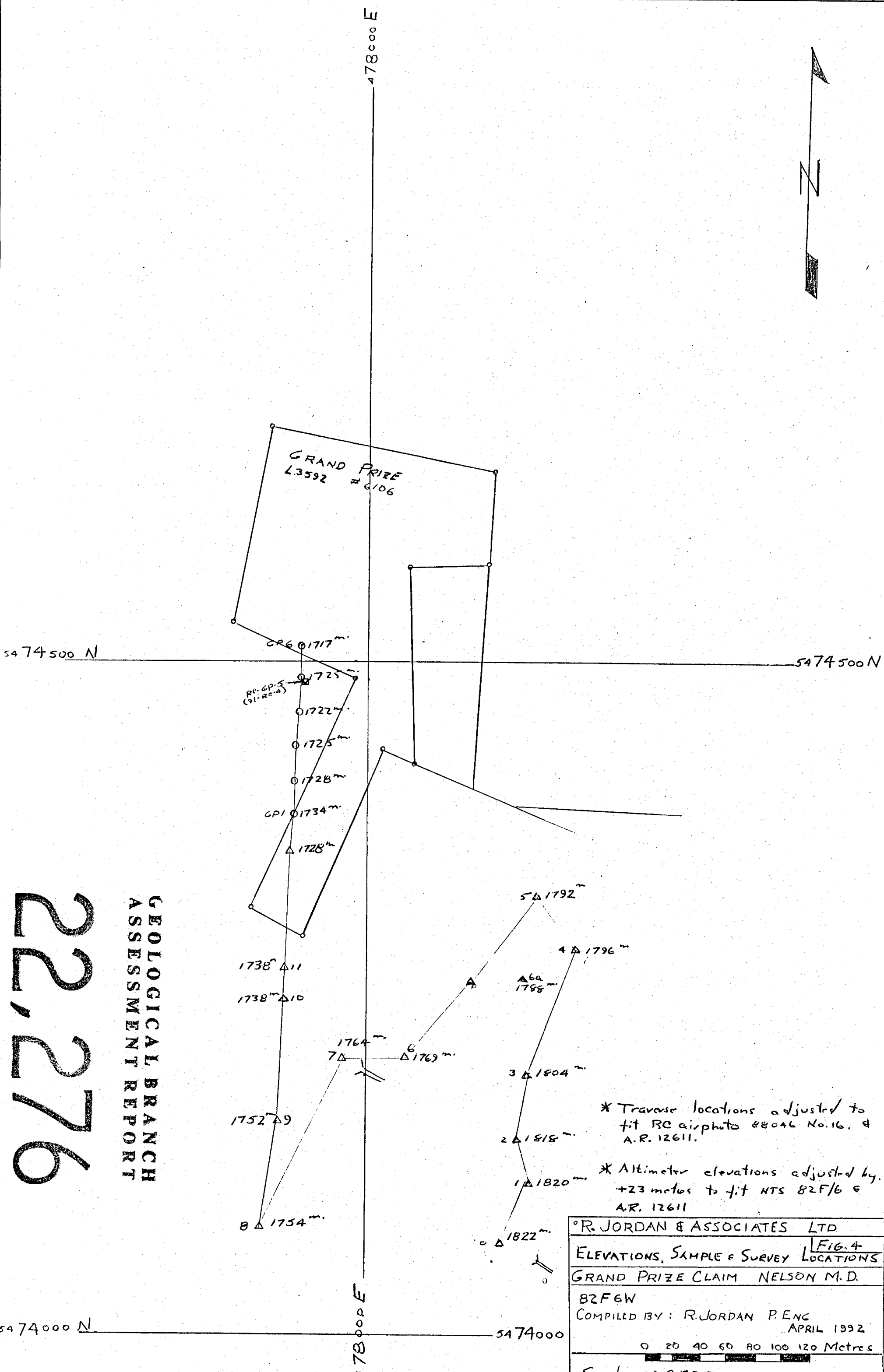
- LOWER OR MIDDLE JURASSIC**
- V Jsk SILVER KING intrusions  
plagioclase porphyry
- LOWER JURASSIC**
- Rossland Group**
- Upper Elise Formation**
- Jc 7f Basaltic tuff, calc. mafic, fine tuff
  - Jc 4 Augite, minor plagioclase basalt flows  
flow breccias.
  - Jc 1-4 Augite minor plagioclase basalt flows  
flow breccias.
- dgr - dark grey to black,  
gr - light to medium grey,  
s - schistose  
m - massive \* FAULT POSITIONS  
sil - siliceous DIAGRAMMATIC

R JORDAN & ASSOCIATES LIMITED	
GEOLOGICAL MAP	FIG. 3
GRAND PRIZE/BRITANNIA/GRAND TWO CLAIMS	
NELSON MINING DIVISION 82 F/6W	
Completion: R. JORDAN, P. Eng. 92/04	
0 40 80 120 160 200 240 Metres	
Scale 1: 5,000	

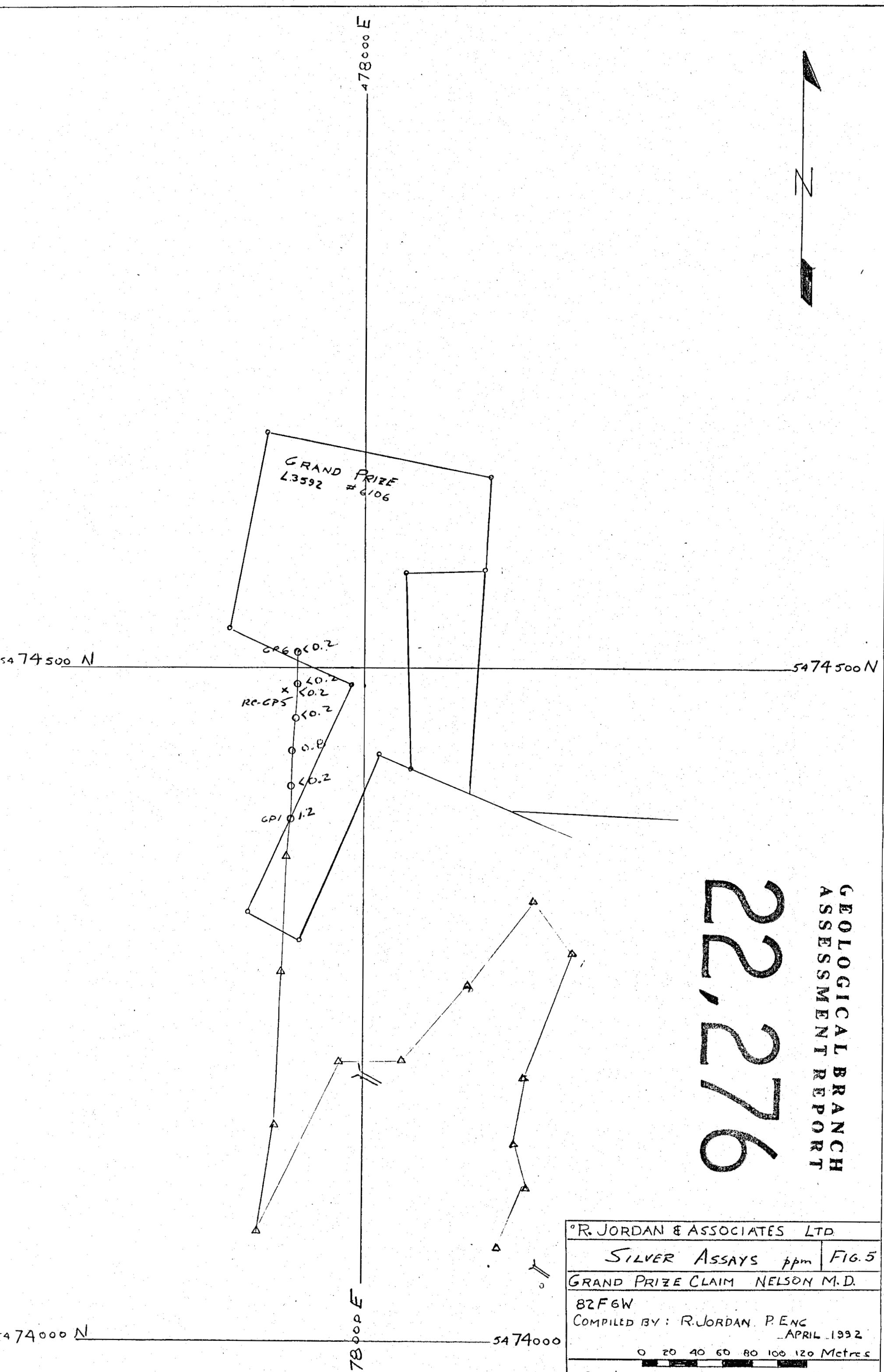
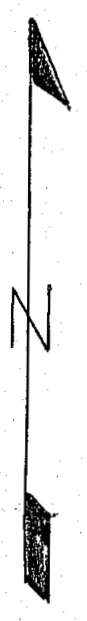
HALL  
SYNCLINE

22,276

GEOLOGICAL BRANCH  
ASSESSMENT REPORT



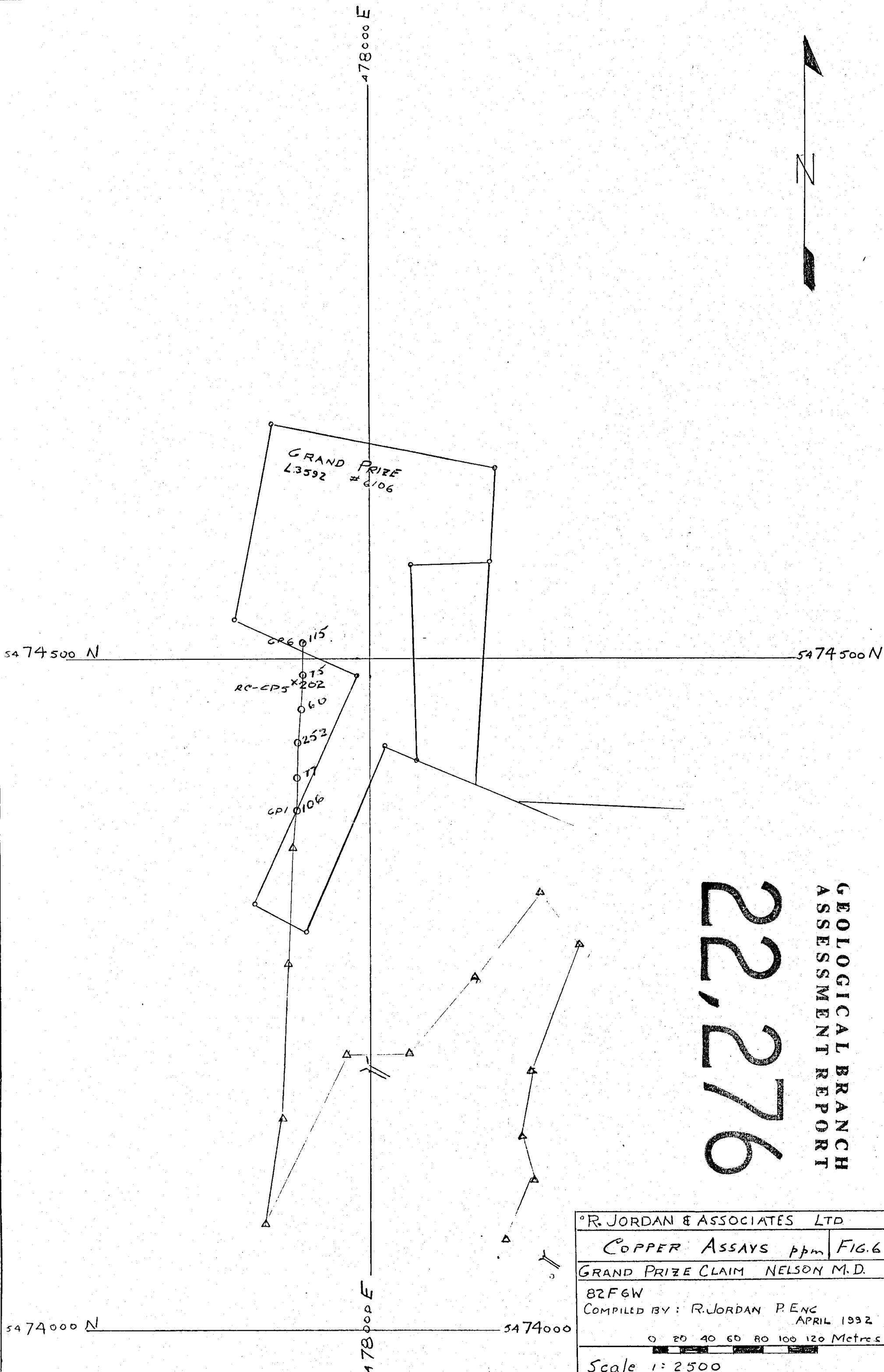
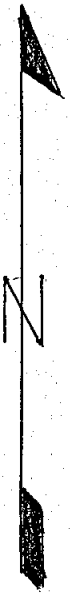




22,276

GEOLOGICAL BRANCH  
ASSESSMENT REPORT

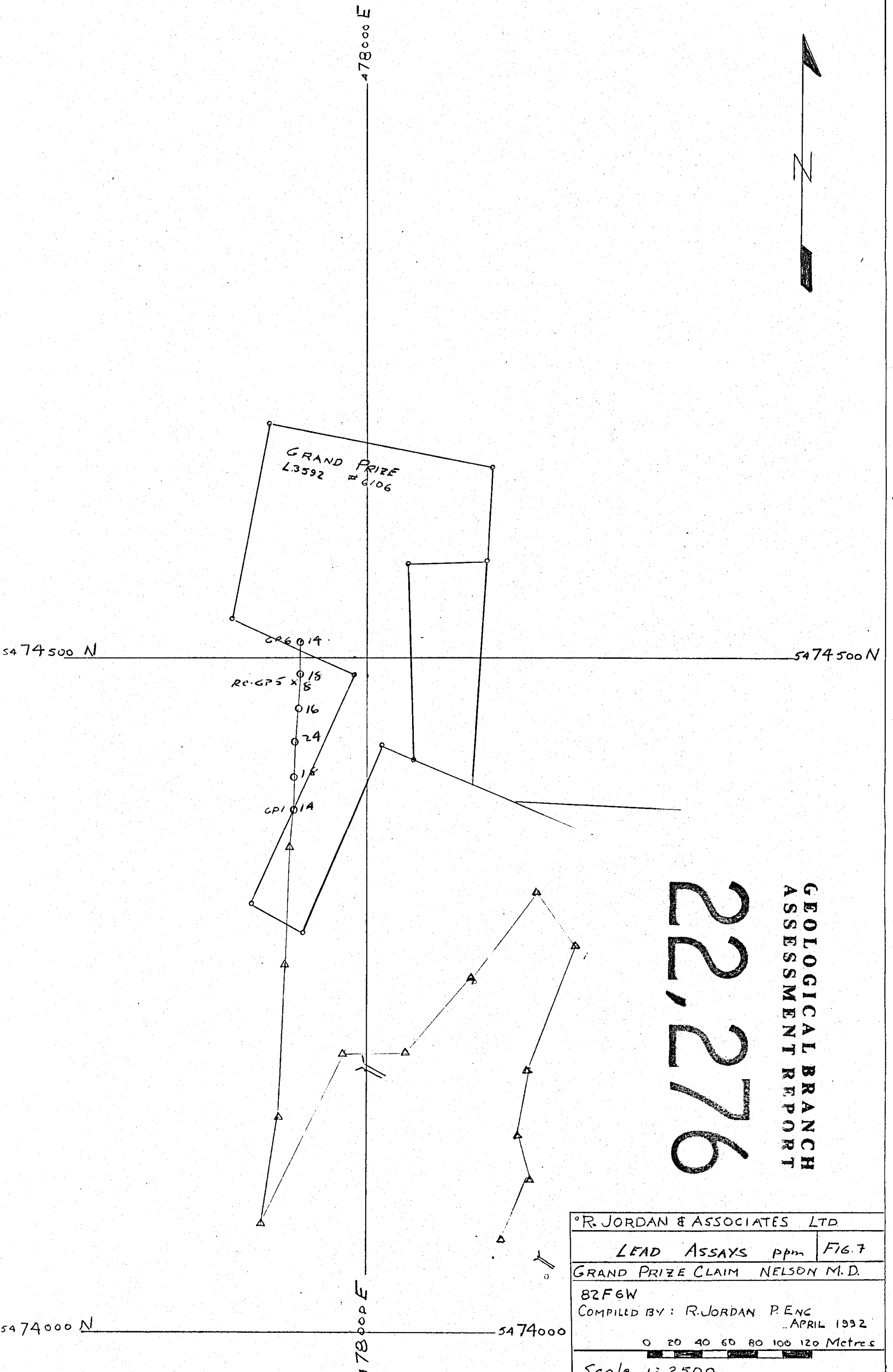
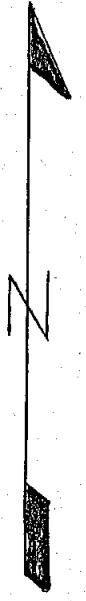
R. JORDAN & ASSOCIATES LTD	
SILVER ASSAYS ppm	FIG. 5
GRAND PRIZE CLAIM NELSON M.D.	
82F6W	
COMPILED BY: R. JORDAN, P. ENG	
APRIL 1992	
0 20 40 60 80 100 120 Metres	
Scale 1: 2500	



22,276

GEOLOGICAL BRANCH  
ASSESSMENT REPORT

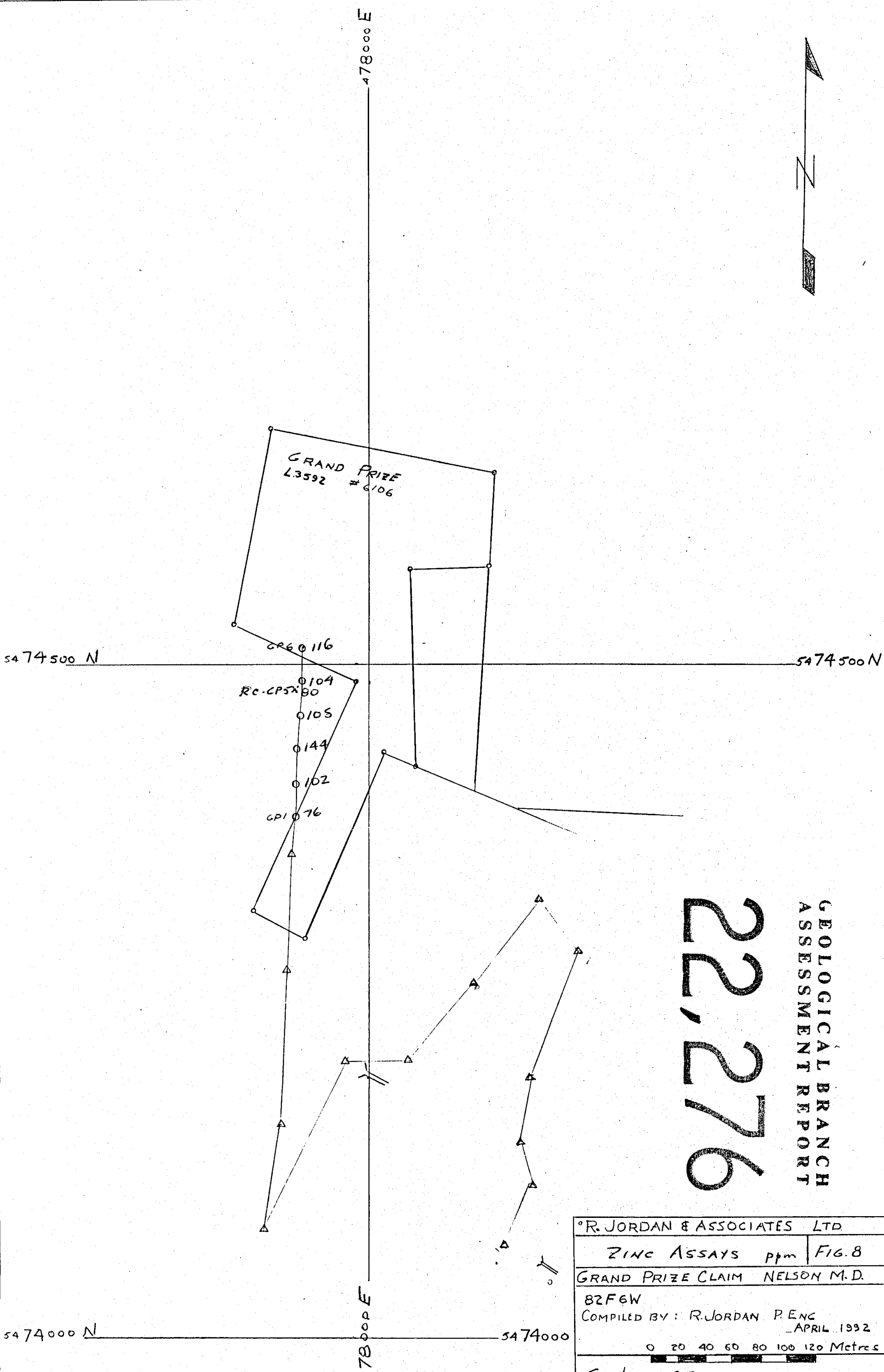
R. JORDAN & ASSOCIATES LTD	
COPPER ASSAYS ppm	FIG. 6
GRAND PRIZE CLAIM NELSON M.D.	
82FGW	
COMPILED BY: R. JORDAN P. ENG	
APRIL 1992	
0 20 40 60 80 100 120 Metres	
Scale 1:2500	



22,276

GEOLOGICAL BRANCH  
ASSESSMENT REPORT

R. JORDAN & ASSOCIATES LTD	
LEAD ASSAYS ppm	FIG. 7
GRAND PRIZE CLAIM NELSON M.D.	
82F6W	
COMPILED BY: R. JORDAN P. ENG	
APRIL 1992	
0 20 40 60 80 100 120 Metres	
Scale 1: 2500	



22,276

GEOLOGICAL BRANCH  
ASSESSMENT REPORT

R. JORDAN & ASSOCIATES LTD	
ZINC ASSAYS ppm	FIG. 8
GRAND PRIZE CLAIM NELSON M.D.	
82F6W	
COMPILED BY: R. JORDAN P. ENG	
APRIL 1992	
0 20 40 60 80 100 120 Metres	
Scale 1: 2500	