

LOG NO: OCT 2 1 1992 RD.

ACTION.

FILE NO: A-22525

1990 GEOLOGIC REPORT
ON THE
DAYTON FRACTION, GVS #1, GVS #2,
GEM 1-3, GEM FRACTION, SR 1-10 AND SR 11-14

GREENWOOD MINING DIVISION
BRITISH COLUMBIA

NORTH LATITUDE 49°05' WEST LONGITUDE 119°07'

NTS 82E/3E

PREPARED FOR
CROWNEX RESOURCES CORP.
SUITE 100-200 GRANVILLE STREET
VANCOUVER, B.C.
V6C 1S4

PREPARED BY
COAST MOUNTAIN GEOLOGICAL LTD.
P.O. BOX 11604
1410-650 WEST GEORGIA STREET
VANCOUVER, B.C.
V6B 4N9

**GEOLOGICAL BRANCH
ASSESSMENT REPORT**

22,565

TABLE OF CONTENTS

1.0 INTRODUCTION ✓

- 1.1 Summary ✓
- 1.2 Location and Access ✓
- 1.3 Physiology and Climate ✓
- 1.4 Property Description ✓
- 1.5 Property History ✓

2.0 GEOLOGY, GEOCHEMISTRY AND GEOPHYSICS ✓

- 2.1 Regional Geology ✓
 - 2.1a Structure ✓
 - 2.1b Alteration ✓
 - 2.1c Mineralization Style ✓

3.0 DISCUSSION ✓

- 3.1 Dayton Fraction Group ✓
 - 3.1a Geology ✓
 - 3.1b Geochemistry ✓
 - 3.1c Geophysics ✓
 - 3.1d Drilling ✓
 - 3.1d i Dayton Camp Drill Holes ✓
 - 3.1d ii Dayton Fraction Group Drill Holes ✓
 - 3.1e Recommendations ✓

4.0 CONCLUSIONS

- APPENDIX A Statement of Qualifications ✓
- APPENDIX B Statement of Expenditures ✓
- APPENDIX C References ✓
- APPENDIX D Certification of Analysis ✓
- APPENDIX E Drill Logs ✓

LIST OF ILLUSTRATIONS

- Figure 1 Property Location Map ✓

- Figure 2 Claim Map - Government ✓
- Figure 3 Dayton Fraction Group Claim Map ✓
- Figure 4 Historical Mining Location ✓
- ~~Figure 5 Regional Geology ✓~~ illegible -TK,
- Figure 6 Dayton Fraction Group Outcrop Geology ✓
- Figure 7 General Property Geology Dayton Fraction Group ✓
- Figure 8 Soil Geochem, Au Dayton Fraction Group ✓
- Figure 9 Select Rock Chip Location ✓
- Figure 10 General Area Air Mag Anomalies Crownex ✓
(1988-89)
- Figure 11 Ground Magnetics Dayton Fraction Group ✓
- Figure 12 Drill Hole Locations ✓
- Figure 13 Dayton Camp Grid ✓

1.0 Introduction

1.1 Summary

A significant part of the Crownex (Canada) Ltd. 1990-92 gold exploration program at Dayton Camp was carried out on the following twenty-one (21) claims, (which listed claims will hereafter be referred to as "Dayton Fraction Group") (Figure #3) optioned from Stan Ruzicka: GVS 1, GVS 2, Gem 1, Gem 2, Gem 3, Gem Fraction, SR 1, SR 2, SR 3, SR 4, SR 5, SR 6, SR 7, SR 8, SR 9, SR 10, SR 11, SR 12 SR 13, SR 14, and the Dayton fraction. This program was successful in delineating gold drill targets, the drilling of which, resulted in anomalous gold intercepts. This report describes the area covered, techniques used and results obtained from a ground based geological, geophysical and geochemical reconnaissance program carried out from June 14 1990 to April 30, 1991, and includes follow-up programs that were conducted through the summer of 1992.

Exploration in the Dayton Camp was directed towards evaluation of gold skarn potential, similar to the Buckhorn gold skarn deposit just south of the project area, in Washington State, approximately eight (8) kilometers south of Rock Creek, B.C., which was the model of interest.

The exploration program was successful in delineating drill targets within Dayton Camp and one drill hole, DC-9, drilled on the Dayton Fraction intersected a quartz ankerite vein from 100-130 feet which returned

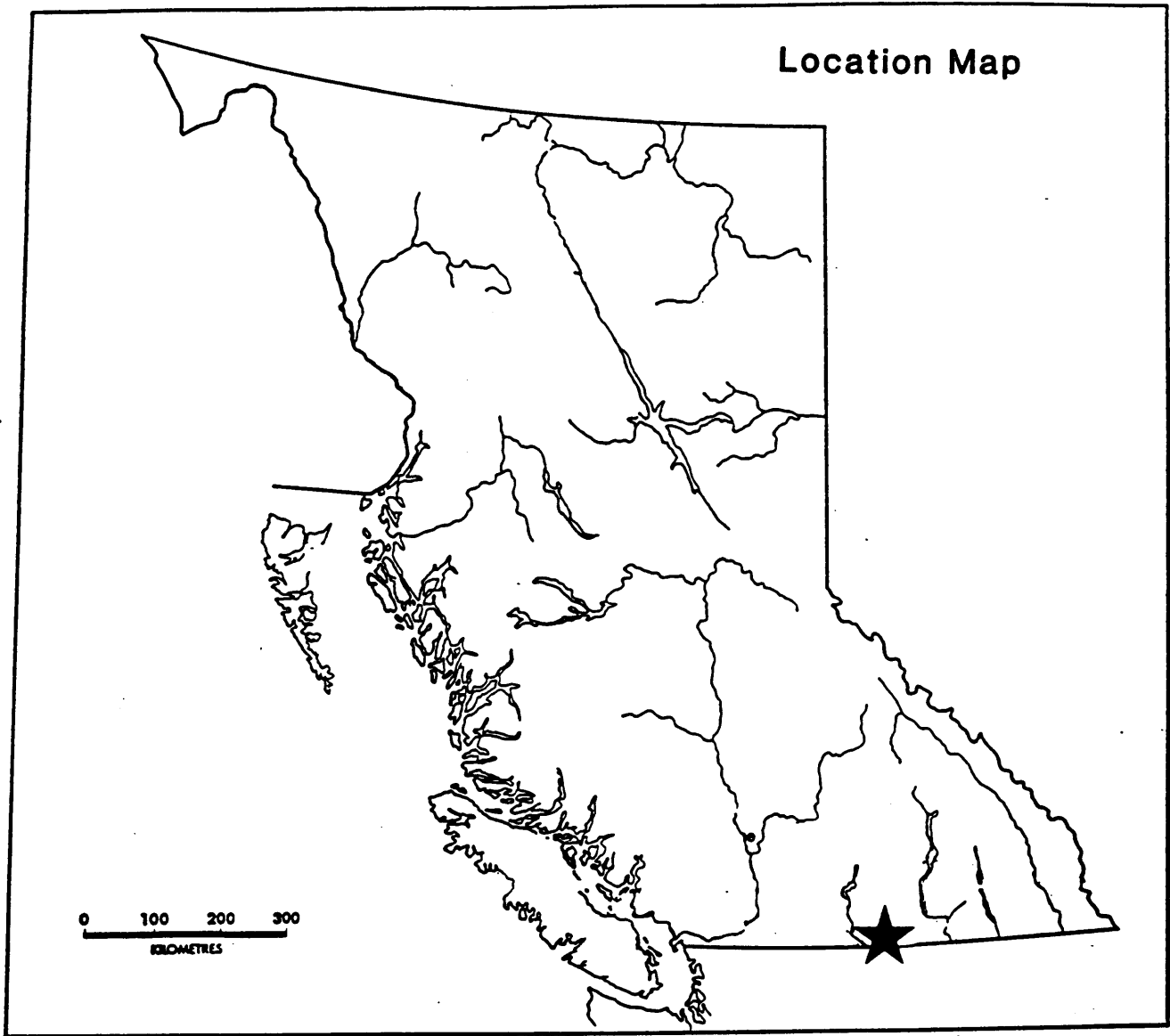



FIGURE 1.

 CROWN RESOURCE CORPORATION			
REVISION	DATE	DRAWN BY	DATE
REVISION	DATE	REVISION	DATE
<p>DAYTON FRACTION GROUP</p>			<i>RFM</i>
DATE		SCALE	DWG NO.

values of 0.098 opt and included one 5 foot intercept of greater than one-half ounce.

1.2 Location and Access (Figures #1 & #2)

Located approximately five kilometers north of Bridesville along the Mount Baldy ski hill road, the Dayton Fraction Group lies within and adjacent to the old Dayton Camp claim group. The Dayton Fraction Group of claims is located within the Greenwood Mining Division of B.C. and the geographical coordinates for the center of the property are 49°5' north latitude and 119°07' west longitude. The property is located on the eastern half of the N.T.S. map sheet 82E/3.

Jolly Creek bisects the Dayton Fraction Group with Rice Creek to the east and McKinney Creek to the south. The Camp McKinney gold district is located some six (6) kilometers to the northwest

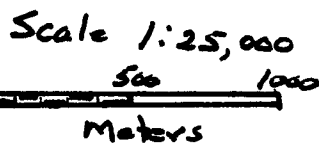
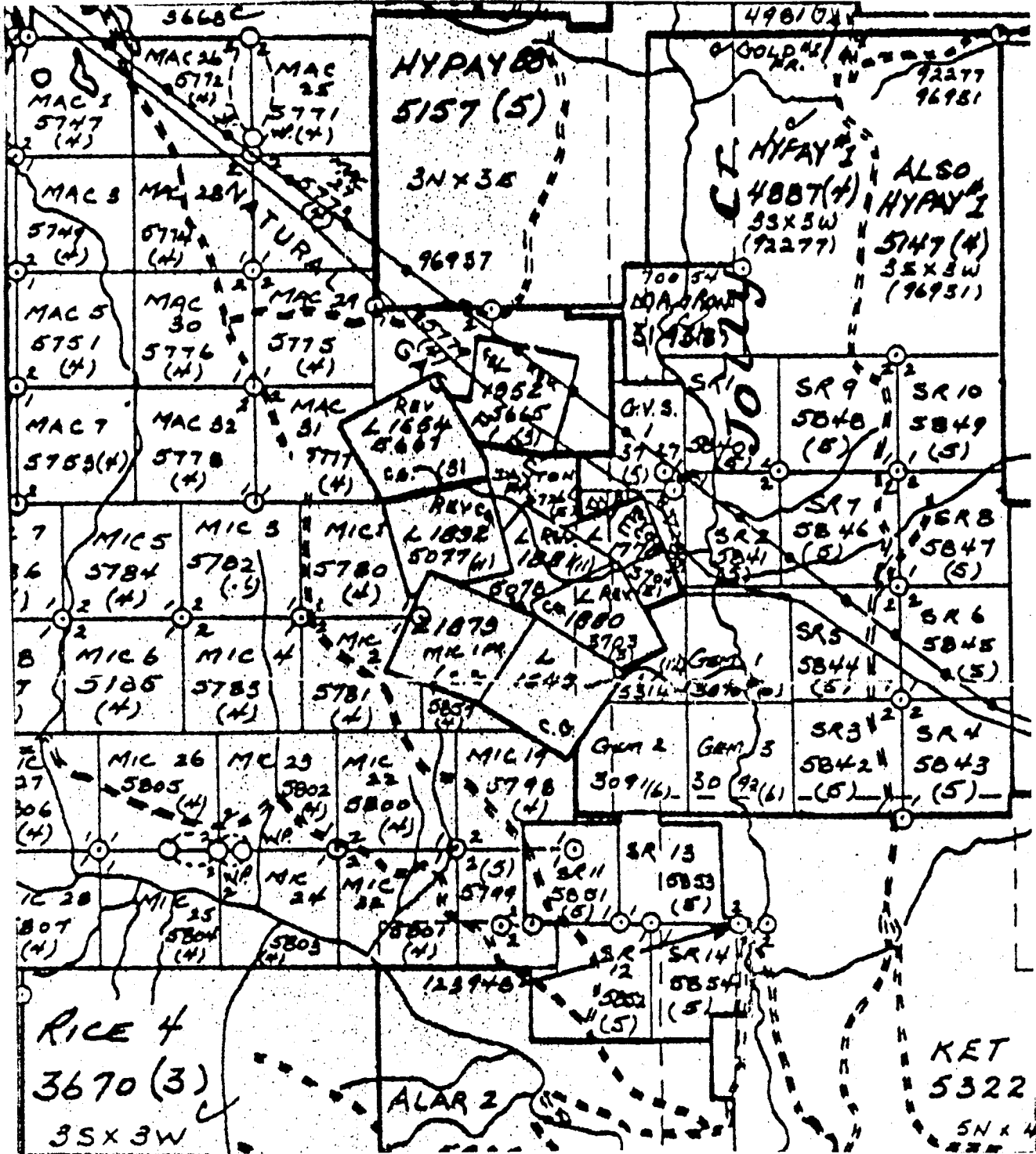
Perimeter access to the property is via the improved Mt. Baldy road, off of Highway #3 to the north at the Rock Creek bridge, from which bush roads provide internal access to the Dayton Camp area; however internal access to the claims that are bisected by Jolly Creek is fair to poor.

1.3 Physiology and Climate

Relief in the general area is moderate with elevations ranging from 671 meters above sea level in the

DAYTON FRACTION GROUP

FIGURE 2



Kettle River valley to 1463 meters above sea level on Anarachist Mountain. The intervening area consists of grassy, rolling highlands with local steep gradients near the numerous drainages and in particular, along Rock Creek.

Conifers and grassland pasture are found at the higher elevations with grasslands, poplars, willows, and conifers, intermixed with crop and hay lands, at lower elevations.

Climate conditions can be characterized by hot, dry summers and moderate winters with little snow cover.

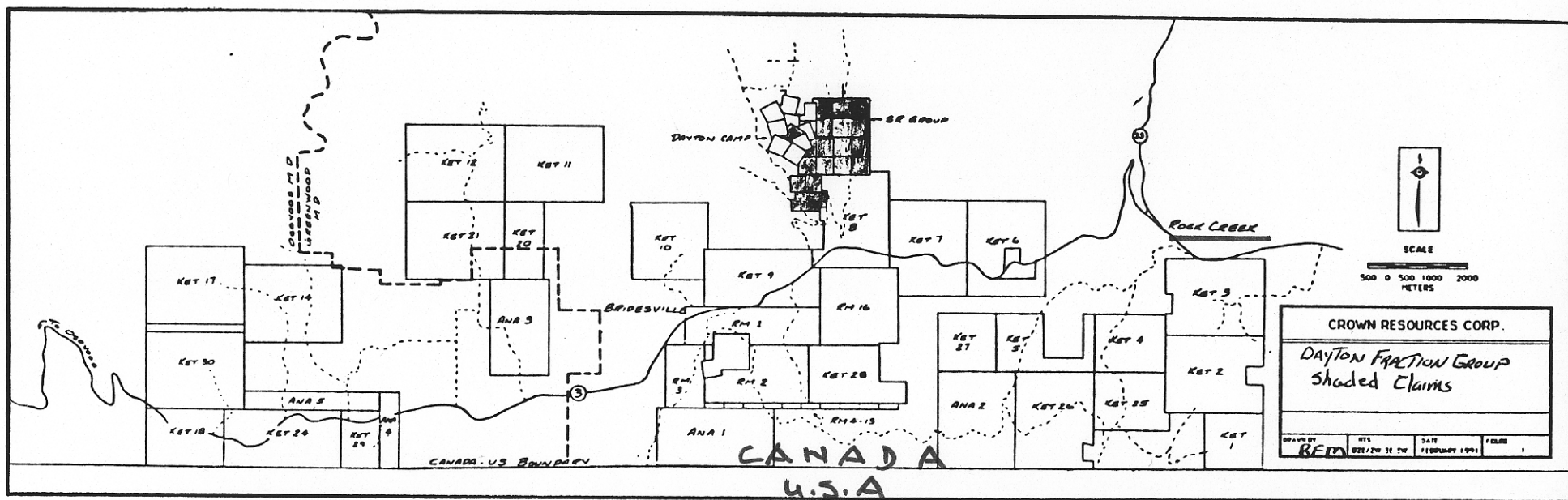
1.4 Property Description

The Dayton Fraction Group, owned by Stan Ruzicka of Grand Forks, B.C., is located in the Greenwood Mining Division of Southern British Columbia, is comprised of 21 two-post claims (Figure #3), and was worked under an option agreement with Stan Ruzicka, by Crownex Resources (Canada) Ltd., a subsidiary of Crown Resources, Denver, Colorado.

The following table summarizes pertinent claim data from records of the B.C. Ministry of Energy, Mines and Petroleum Resources:

OPTIONER	CLAIMS	LOT NO.	RECORD NO.	UNIT
Ruzicka	Dayton Fraction	L1953	3726	1
	GVS #1		3727	1
	GVS #2		3728	1
	GEM 1-3		3090-3092	3
	Gem Fraction		3093	1
	SR 1-10		5840-5849	10
	SR 11-14		5851-5854	4

FIGURE 3.



Total Units	21
Approximate Acres	1050
Approximate Hectares	420

ASSESSMENT DUE DATE - OPTION AGREEMENT CLAIMS:

CLAIM NAME	EXPIRATION DATE
Dayton Fraction	5-9-91
GVS #1	5-9-91
GVS #2	5-9-91
Gem 1-3	6-10-91
Gem Fraction	6-10-91
SR 1-10	5-8-91
SR 11-14	5-10-91

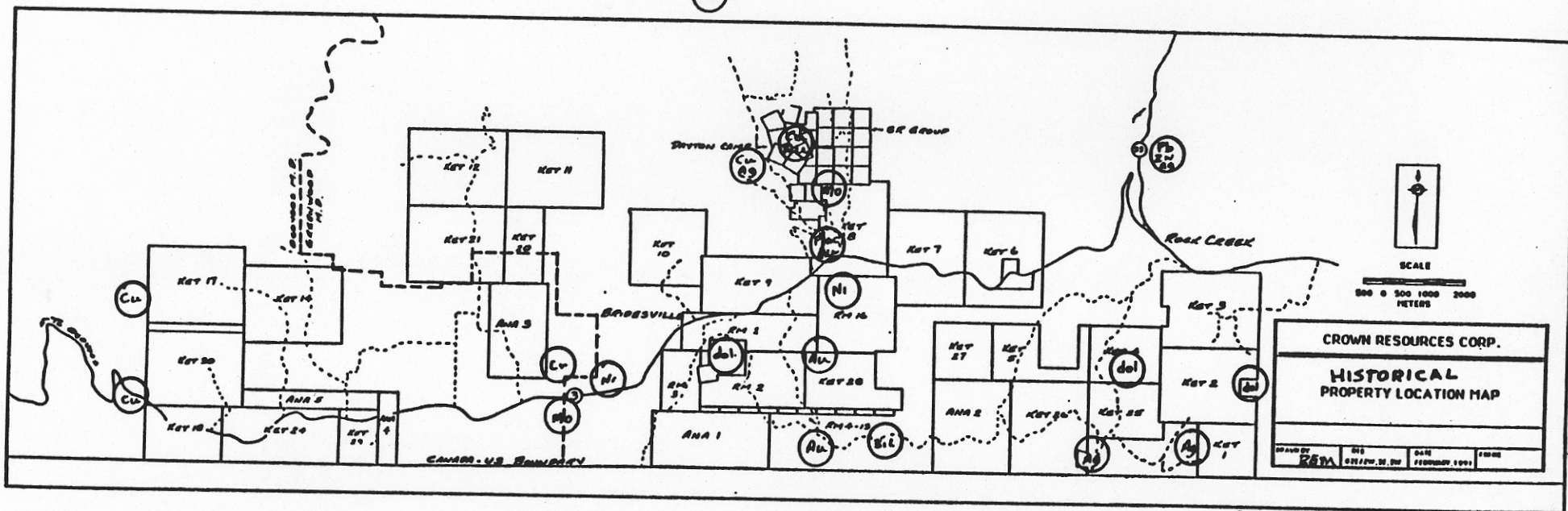
1.5 Property History (Figure #4)

Mineral exploration and development, within the Dayton Camp project survey area, commenced around the turn of the century with discovery of the McKinney Creek - Rock Creek placer deposits and mines of Camp McKinney. One of the early lode gold producing areas in British Columbia, Camp McKinney produced approximately 82,000 ounces of gold from 1894-1903 and various attempts to revive the camp have been made from 1903 until the present. Camp McKinney lode gold deposits along with the placer gold occurrences of McKinney, Rice, and Rock Creek are located, adjacent to, along side, and within, six (6) kilometers of the Dayton Fraction Group claims.

South of McKinney Camp minor turn of the century

FIGURE 4.

(Au)



(Au-Cu)

HISTORICAL MINING LOCATIONS - WITH PRINCIPAL COMMODITY

production of direct shipping, hand sorted ore was mined from the Dayton Fraction claim that anchors the copper-gold showings of the Dayton Camp prospects.

In 1955, Mr Brian Fenwick-Wilson, a prospector, first staked a nickel showing located between the Rock Creek bridge and the Rock Creek-Bridesville road, and then restaked the ground in 1966. Since that time Newmont Mining Corp., Nickel Ridge Mines Ltd., and Utica Mines Ltd. have carried out extensive exploration programs, including drilling that has outlined a minimum of 100,000,000 tons of 0.22% nickel that appears to have sub-economic extraction recoveries of 56%. This nickel orebody lies within Crown Resources RM 16 claim.

Other small scale sporadic exploration programs within the area of interest, have continued through to the present time and have included the development of shafts, adits, and prospects pits for gold, chrome, molybdenum, and base metals. In more recent times exploration has centered around geochemistry and geophysics which is usually followed, where warranted, by small drilling programs.

Industrial mineral exploitation is limited within the survey area, to the Mighty-White Dolomite pit along the eastern edge of the survey block, and various gravel operations. Minor exploration and evaluation has been directed towards: the siliceous (meta-chert) outcrops along the Rock Mountain-Bridesville Road near the summit, and the sporadic outcropping of dolomite south of Rock Creek and

south of Bridesville.

Very limited recent placer activity was noted along the Rock Creek Jolly Creek, and McKinney Creek drainages with no evidence of serious production efforts while windrowed piles of sand and gravel along the shores of the creeks attest to the intense historical placer mining effort.

2.0 Geology, Geochemistry and Geophysics

2.1 Regional Geology Dayton Fraction Group Project Area (Figure #5)

Permo-triassic Anarchist Group rocks comprised of Amphibolite, greenstone, quartz-chlorite schist, quartz-biotite schist, and minor serpentinite occur throughout most of the general area. Knob Hill Group rocks mainly chert, greenstone and marble, are found south of Rock Creek and north of Buckhorn Mountain in Washington state.

Kobau group rocks, similar in age to the Anarchist group, are found to the eastern and south east of the survey block where they are mainly comprised of amphibolite, greenschist, quartzite, chert, greenstone, and minor marble.

Nelson plutonic rocks of cretaceous Jurassic age consisting of: massive hornblende-biotite granodiorite, quartz diorite and granite, intrude the eugeosynclinal Anarchist Formation.

Smaller plugs, dikes, and sills? of biotite granodiorite, diorite and granite, of Jurassic to

Cretaceous age belonging to the Okanogan batholith, are found to the northeast and northwest corner of the Dayton Fraction Group claims.

Eocene age rocks of the Yellow Lake and Kitley Lake formation are found trending north-south on the east side of Jolly Creek and can, in part, be traced to the south near the International border. These Tertiary outlier rocks are composed of phonolite, trachyandesite, trachyte and a sequence of cobble conglomerate with minor sands.

2.1a Structure

Tight folds were noted in the metasedimentary-metavolcanic sequence along with strong north-east and north trending faults. In between the northerly trending fault zones, minor east-west faulting has occurred. Phyllitic to mylonitic fabrics as well as some breccia zones were proximal to most of the predominate faulting.

2.1b Alteration

Propylitic alteration is common in the greenstone-diorite contact areas. Skarnification is evident near the Mighty White Dolomite mine at Rock Creek, along the railroad grade below the Rock Mountain road, and at the Dayton Camp near the contacts between granodiorite and lime rich rocks specifically at the LeRoi-War Eagle workings. Massive silicification was observed near the Old Nick Mine in RM-16 where sulfides occur in metaquartzite and/or

metachert and/or siliceously replaced metasedimentary beds. Extensive quartz veining and bleaching along with the introduction of magnesite was traced in a general north-south direction along the high ridge area south of Dayton Camp. Iron staining along with argillic alteration was noted in the Rock Creek drainage below Dayton Camp, within the SR #1 claim. Hornfelsic development was common near granodiorite contacts with fine grained clastics? and/or greenstones at Dayton Camp. Epidote in the Osoyoos granodiorite pluton to the west was common and sanded dolomite with a strong hydrogen sulfide odor was found to outcrop in an east-west belt, south of the Dayton Camp Group.

2.1c Mineralization Styles

Pyrite and/or base metal and/or precious metal in quartz veins, mineralized calcite veins, shear zones and breccias are common. Nickel rich pyrrhotite with pyrite and chalcopyrite and possible trace amounts of pentlandite are found with massive silicification, replacement?, metachert, metaquartzite? outcrops in the Rm-16 claim (Old Nick) and Anarchist Summit areas. Pyrite with calcite and epidote veining along with disseminated magnetite is common in the chloritic greenstones and meta-andesites throughout the general area. Massive garnet, epidote, pyrrhotite and magnetite skarn at the Le Roi-War Eagle claim, in Dayton Camp, is associated with metasomatic contact aureoles that

usually carry highly anomalous copper and gold values. Magnetite is commonly disseminated in the serpentinite as is pyrite and pyrrhotite in the greenstone, neither of which appears to carry interesting gold mineralization but both of which occur locally within the general area.

3.0 Discussion

3.1 Dayton Fraction Group

3.1a Geology (Figure #6 outcrop geology & Figure #7 general geology)

Geology of the property taken from grid line observations, consists of metavolcanic and metasedimentary rocks of the Permian Anarchist Formation and intrusive rocks of the Jurassic-Cretaceous Nelson batholith, with Eocene coarse sediments along the eastern edge of the property.

The east central core of the grid area consists of a propylitic Greenstone roof pendant hosting diorite and feldspar porphyry intrusives, calcite veins, mineralized quartz veins, zones of disseminated pyrite and thin beds of hornfelsic metasediments that include chert pebble and sharpstone conglomerates, metaquartzite and meta siltstones. Rocks of the metasediment package increase in abundance to the north east, strike north west, and dip to the north east. Underlying the Greenstone rock package,

hornfelsic metasediment, skarn, minor diorite and localized concentrations of disseminated magnetite, and sulfides occur.

3.1b Geochemistry (Table 1 & Table 2, Figure #8 soil geology, Figure #9 rock chip 1990 Au >99.0ppb)

Anomalous gold assays obtained from rock chip sampling within the Dayton Camp area were followed with grid soil sampling. Plotted gold assays from the - 80 mesh fraction of the "B" horizon were contoured at 15 and 50 ppb. The resulting map depicts a central core of anomalous gold values associated with the propylitic greenstone rocks that trend north, north west. Scattered smaller gold anomalies are located south and east of the core area. The highest gold in soils obtained in the 1990-91 program, 1290 ppb, was collected from an infill line along the south eastern edge of the broad central soil anomaly in the Dayton Camp grid. The gold in soils greater than 100ppb are listed on Table #2.

South of the large gold in soils anomaly on the War Eagle-Le Roi Crown Grants, rock chip samples from a garnet, pyrrhotite skarn were anomalous in gold and ran high in bismuth to 726 ppm and assayed over one percent (1%) copper with a very anomalous 800 ppm Tungsten. Overall, copper values from rock chips are anomalous in the grid area, although there doesn't appear to be a strong correlation between gold mineralization and any particular sulfide.

ROCK SAMPLE SHEET

Sampler _____

Date _____

 Property DAYTON FRACTION

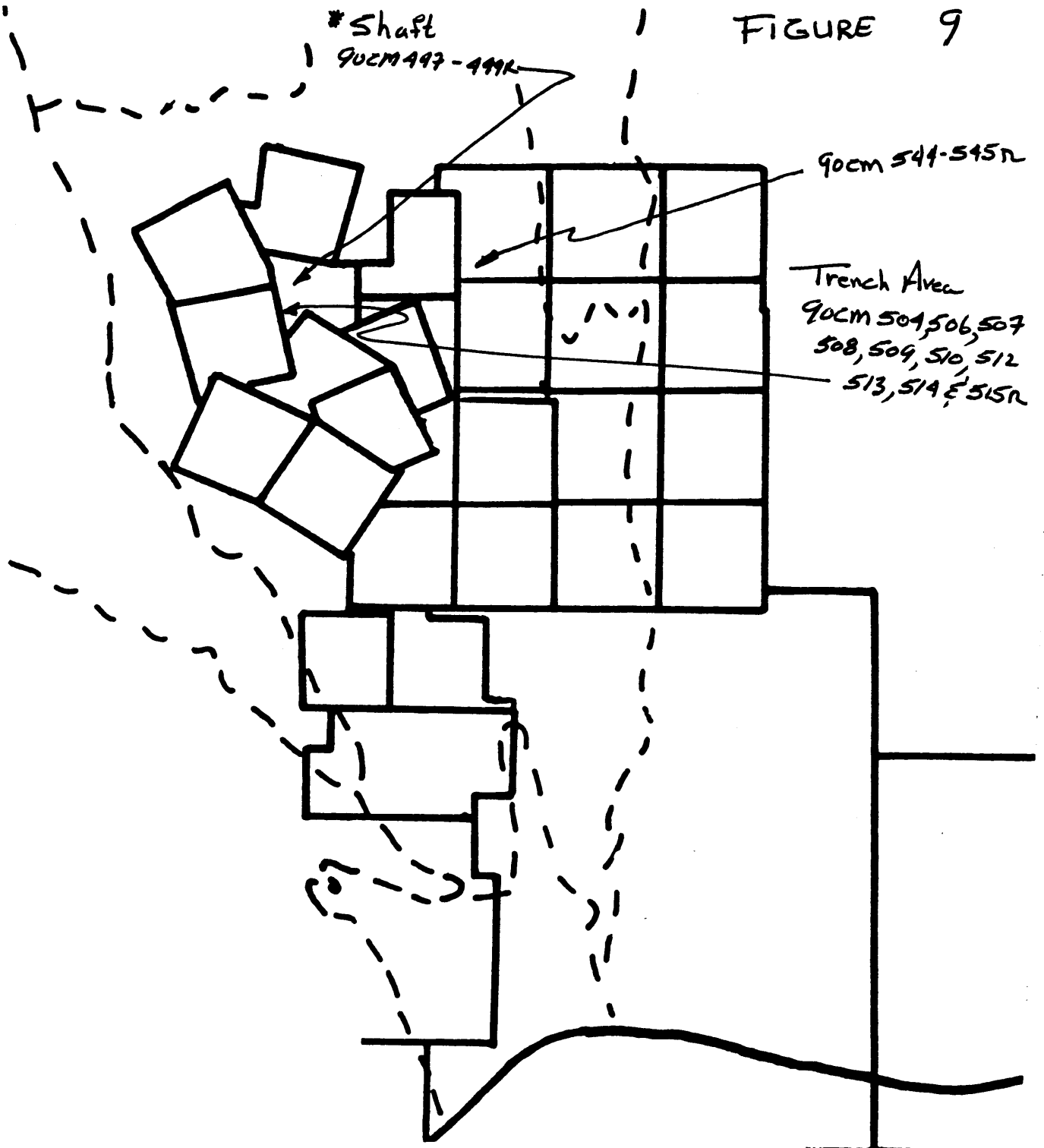
TABLE #1


NTS _____

SAMPLE NO.	Sample Width	DESCRIPTION			Au > 99° ppb	ADDITIONAL OBSERVATIONS	ASSAYS				
		Rock Type	Alteration	Mineralization			PP6 Au	OUT Au			
90cm 497R	G	Vol?	Carbonate	Pyrite, Cuox Chalcopyrite		Magnetite/Marcasite	905				
90cm 498R	G	Vol?	Silica - Carbonate	Chalcopyrite - Pyrite		bx Tr. Marcasite		0.11			
90cm 499R	G	Vol?	Silica Carbonate	Tr pyrite		Faltered Magnetite outcrop	180				
90cm 504R	G	diarite	propylitic	Tr Cuox		very qty vaillets	195				
90cm 506R	G	diarite	propylitic	Tr Chalco, Py Tr Cuox		Faltered	18				
90cm 507R	G	diarite	propylitic	Tr Chalco, Py Tr Cuox		abundant biotite	1000				
90cm 508R	G	diarite?	propylitic	Tr Pyrite, Tr Cuox		highly altered (greenstone?)	150				
90cm 509R	G	gouge	Argillitic	Feox Cuox		clay same slicks in diarite	9500				
90cm 510R	G	diarite	propylitic	Chalco, Py. Cuox		Magnetic w/abundant Calc	1030				
90cm 512R	G	Andesite	propylitic	Py? Po?		Fracture hosted Sulfide	180				
90cm 513R	G	Andesite	propylitic	Mag. Po, Py		Magnetic	48				
90cm 514R	G	diarite	propylitic	Chalco & Pyrite		Sulfides along fractures	590				
90cm 515R	G	diarite bx	propylitic	Tr Sulfide? minor Cuox		bx	165				
90cm 544-545	G	gouge	Argillitic	Feox		Shear?					
						90cm 544R	525				
						90cm 545R	460				

C-CHIP G-GRAB F-FLOAT

FIGURE 9




CROWN RESOURCE CORPORATION

SAMPLE	REVISED	DATE	DAYTON FRACTION GROUP SELECT Rock chip SAMPLES 1990
NO.	NO.	DATE	
DATE			SCALE 1:25000 DWG NO. 9

See table 1

TABLE 2
DAYTON CAMP GOLD IN SOIL > 99.0 PPB
STATION Au PPb

1.	37800	N	44150	E	215
2.	38100	N	44875	E	345
3.	38200	N	44250	E	225
4.	38200	N	44350	E	440
5.	38200	N	44500	E	140
6.	38300	N	44225	E	120
7.	38300	N	44350	E	350
8.	38400	N	44175	E	135
9.	38400	N	44250	E	170
10.	38400	N	44275	E	425
11.	38400	N	44450	E	460
12.	38700	N	44400	E	150
13.	44400	E	38225	N	100
14.	44400	E	38275	N	115
15.	44500	E	38225	N	165
16.	44500	E	38250	N	1290
17.	38600	N	44225	E	115

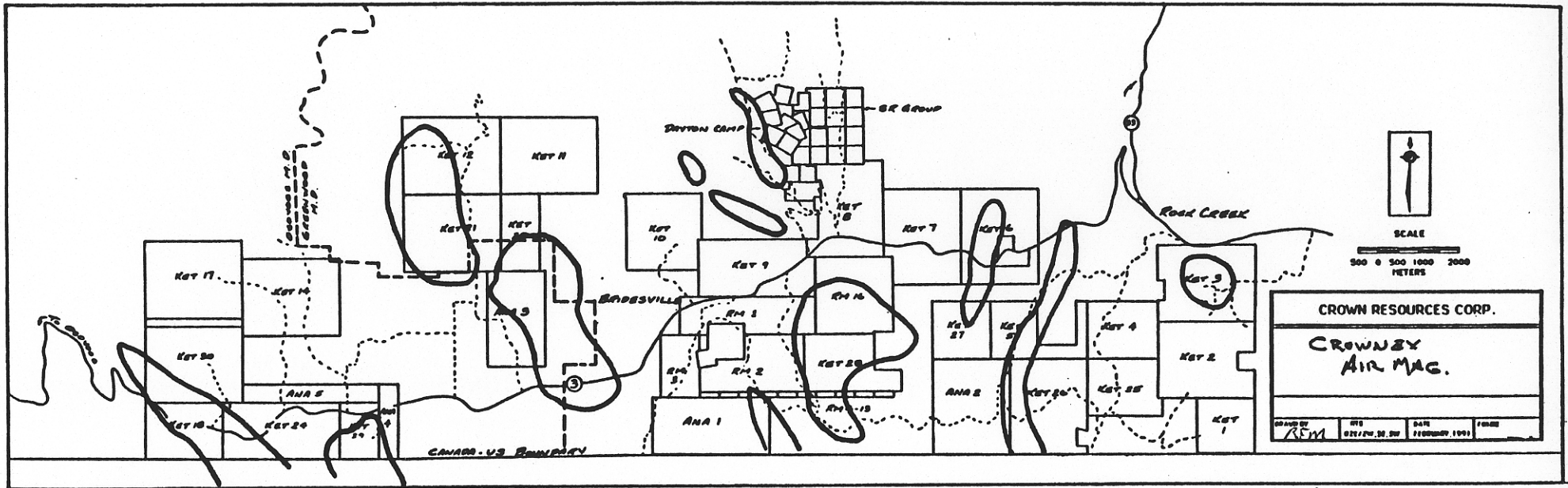
CROWN RESOURCES

Rock chip samples 90CM 544 and 545 R were obtained from a very interesting outcrop in SR #1 near the bottom? of the Eocene conglomerate in a ferruginous argillicially altered silty clay. Free gold can be panned from this outcrop, similar to the free gold that can be panned from oxidized shears in the main part of Dayton Camp. The outcrop is located some 30-40 feet above a placer operation along Rock Creek and it may be that the gold assays of 525 and 460 ppb (90Cm 544-545) are related to the placer deposits but the altered outcrop area has enough size and specific epithermal character to warrant investigation for sandstone hosted gold deposits similar to those in Wenatchee, Washington.

3.1c Geophysics (Figure #10 general area mag anomalies, Figure #11 ground magnetometer)

Ground magnetic readings are anomalous along the exposed southern dip slope edge of the greenstone sheet and to the west of the gold in soils anomaly where the high gamma readings trend north west crossing the grid baseline. Strong anomalous gamma readings are associated with disseminated magnetite in intrusive rocks, mainly granodiorite, but within the greenstone sheet most of the high readings are related to a mix of pyrite and pyrrhotite and/or chalcopyrite and pyrrhotite. Diorite-meta andesite and diorite-greenstone contacts are enriched in magnetite producing localized high readings mainly along the eastern

FIGURE 10



MIDWAY PROJECT - 1990

GENERAL LOCATION OF AIRBORNE MAGNETIC ANOMALIES

edge of the greenstone package where more diorite is exposed.

3.1d Drilling (Figure #12 & Appendix D)
(assay in appendix)

3.1d (i) Dayton Camp Drill Holes

HOLE NUMBER	ANGLE	DIRECTION	DEPTH FEET	MINERALIZED INTERCEPT		
				ftg	ft	opt Au
----- 1 Ft = 30.5 cm -----						
DC-1	-90		310	50-55	5/0.016	
DC-2	-90		400			
DC-3	-60	S45 W	510	10-20 240-250	10/0.026 10/0.010	
DC-4	-90		510	0-30 70-80	30/0.0152 10/0.012	
DC-5	-60	N90 W	190			
DC-6	-90		500			
DC-7	-90		500	15-20 25-30 55-80 85-95 100-110 125-130 160-170	5/0.018 5/0.010 25/0.024 10/0.015 10/0.013 5/0.010 10/0.012	
DC-8	-90		360			
DC-14	-60	N90 W	360	0-5 10-40 50-85 95-105 145-155	5/0.010 30/0.015 35/0.056 10/0.027 10/0.016	

3.1d (ii) Dayton Fraction Group Drill Holes

DC-9	-80	N65 W	160	0-5 65-75 80-85 100-130	5/0.020 10/0.024 5/0.010 30/0.0978
DC-10	-60	N0 E	210	55-60	5/0.017
DC-11	-60	N15 W	100		
DC-12	-60	S35 E	200		
DC-13	-90		100	65-70	5/0.010

Fourteen unsurveyed reverse circulation drill holes were completed within the Dayton Camp grid averaging 315 feet per hole with the total depth ranging from 100 to 510 feet, resulting in a total drill footage of 4410 feet.

Generally those drill hole sites selected to test areas within the soil gold anomaly near increasing magnetic values (Spatially closer to the baseline), intersected strong gold mineralization at depth.

Drill hole sites selected on gold enriched rock chip samples did not find interesting gold values at depth with the exception of DC-9.

Drill hole DC-9 was collared at the Dayton Fraction shaft to investigate at depth, a siliceous magnesite skarn cut by quartz veining containing chalcopyrite and pyrite which assayed 0.414 opt Au in a

hand sample from the ore dump. Results from the drill hole indicate that the target was intersected from 100 to 130' over which the gold ran 0.098 opt and contained a 5 foot interval from 120-125 feet of 0.505 opt. This coincides well with the old report (verbal) that the "pay streak" was four feet wide, carrying 0.4 opt gold, at the bottom of the 100 foot shaft. Drill holes DC-10 and Dc-11 in the same area did not fair as well from the old verbal data as to strike of the "pay zones". To the south of the Dayton Fraction shaft, two short holes were drilled to test gold bearing shear zones that had been mined at the turn of the century. Both of these holes DC 12 & DC 13 returned only anomalous gold values.

3.1e Recommendations

Expansion of the present grid north and east along the SR claims to provide a basis for general ground based geochemistry and geophysics and to include evaluation of the epithermal gold potential in SR 1 below Dayton Camp where rock chip sample #90CM544 and 545 are returned anomalous gold values.

4.0 Conclusions

Although the 1990-91 Dayton Fraction Group project was successful in developing drill targets within the Dayton Fraction claims, it was at the expense of fully exploring the rest of the claim group. Therefore a

continuing program should be implimented to expand the existing data base as the present program has demonstrated the presence of economic gold values and the possibility of low grade bulk tonnage targets.

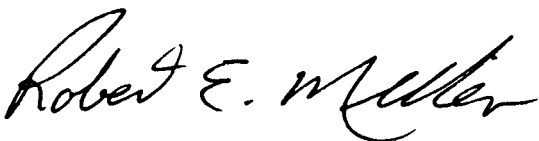
APPENDIX A
STATEMENT OF QUALIFICATIONS

STATEMENT OF QUALIFICATIONS

I, ROBERT MILLER, of Oroville, Washington, DO HEREBY CERTIFY THAT:

1. I am a geologist with Crown Resources Corporation, with a business address of Star Route 85, Oroville, Washington 98844.
2. I am a 1962 graduate from Brigham Young University with a Geological Engineering degree.
3. I have practised my profession continuously since graduation.
4. I personally conducted the 1990 exploration program discussed in this report.

Dated this 26th day of Sept, 1992 .



Robert E. Miller
Geological Engineer

APPENDIX B
STATEMENT OF EXPENDITURES

STATEMENT OF EXPENDITURES

PERSONNEL

PROJECT GEOLOGIST-	
20 DAYS @ \$300.00 PER DAY	6,000.00
GEO TECHNICIANS-	
15 MAN DAYS @ \$200.00 PER DAY	3,000.00

DRILLING

770 FEET @ \$15.00 PER FOOT	11,500.00
-----------------------------	-----------

ASSAYS

ROCKS 15 @ \$14.00 EA	210.00
SOILS 131 @ \$9.00 EA	1,179.00
DRILL CUTTINGS 154 @ \$12.00 EA	1,848.00

MISCELLANEOUS

SHIPPING	1,200.00
SUPPLIES	500.00
VEHICLE 23 DAYS @ \$65.00 PER DAY	1,495.00

SUBTOTAL

26,932.00

REPORT AND DRAFTING

CROWN	600.00
-------	--------

TOTAL

\$ 27,532.00

APPENDIX C

REFERENCES

APPENDIX C

- Basil, Chris. 1990 Airborne Magnetic and VLF-EM Survey Report on the Ket 1-22 and Ket 24-32 Mineral Claims, Assessment Report for Crown Resources.
- Miller, Bob & Schellenberg, Gary. 1990 Summary Report on the Ana 1 Claim, Assessment Report for Crown Resources Corp..
- Miller, Bob & Schellenberg, Gary. 1990 Summary Report on the Ana 2 Claim, Assessment Report for Crown Resources Corp..
- Miller, Bob & Schellenberg, Gary. 1990 Summary Report on the Ana 3 Claim, Assessment Report for Crown Resources Corp..
- Miller, Bob & Schellenberg, Gary. 1990 Summary Report on the Ana 4 Claim, Assessment Report for Crown Resources Corp..
- Miller, Bob & Schellenberg, Gary. 1990 Summary Report on the Ana 5 Claim, Assessment Report for Crown Resources Corp..
- Miller, Bob & Kushner, W.R.. 1990 Summary Report on the Homestake and Daisy Fraction Claims, Assessment Report for Crown Resources Corp..
- Miller, Bob & Kushner, W.R.. 1990 Summary Report on the Ket 1 Group (Ket 1, Ket 2, and Ket 3 Claims), Assessment Report for Crown Resources Corp..
- Miller, Bob & Kushner, W.R.. 1990 Summary Report on the Ket 5 Group (Ket 4, Ket 5, Ket 25, Ket 26 and Ket 27 Claims), Assessment Report for Crown Resources Corp..
- Miller, Bob & Kushner, W.R.. 1990 Summary Report on the Ket 10 Group (Ket 6, Ket 7, Ket 8, Ket 9 and Ket 10 Claims), Assessment Report for Crown Resources Corp..

Miller, Bob & Kushner W.R.. 1990 Summary Report on the Ket 18 Group (Ket 14, Ket 17, Ket 18, Ket 24, Ket 29 and Ket 30 Claims), Assessment Report for Crown Resources Corp..

Miller, Bob & Kushner, W.R.. 1990 summary Report on the Ket 20 Group (Ket 11, Ket 12, Ket 20 and Ket 21 Claims), Assessment Report for Crown Resources Corp..

Open File: Mineral Occurances; Penticton. West of Sixth Meridian, British Columbia. Map 2 of 6, scale 1:250,000.

Templeman-Kluit, D.J.. (1989) Geology, Penticton, British Columbia. Geological Survey of Canada. Map 1736A, scale 1:250,000.

APPENDIX D
CERTIFICATE OF ANALYSIS

ROCK CHIP ASSAYS



Chemex Labs Ltd.

Analytical Chemists * Geochemists * Registered Assayers
994 West Glendale Ave., Suite 7, Sparks,
Nevada, U.S.A. 89431
PHONE: 702-356-5395

CROWN RESOURCE CORPORATION

820 16TH ST. STE. 415
DENVER, COLORADO
80202

Page No. : 1-A
Total Pages : 1
Invoice Date: 5-SEP-90
Invoice No.: I-9021839
P.O. Number :

Project : MIDWAY
Comments : ATTN: CHRIS HERALD CC: J. SHANNON CC: R. MILLER

CERTIFICATE OF ANALYSIS A9021839

SAMPLE DESCRIPTION	PREP CODE	Au ppb FA+AA	Ag ppm	Al %	As ppm	Ba ppm	Be ppm	Bi ppm	Ca %	Cd ppm	Co ppm	Cr ppm	Cu ppm	Fe %	Ga ppm	Hg ppm	K %	La ppm	Mg %	Mn ppm
90CM541R	205 294	10	< 0.2	0.29	< 5	50	< 0.5	< 2	0.60	< 0.5	61	851	63	4.26	< 10	< 1	< 0.01	< 10	10.40	475
90CM542R	205 294	< 5	< 0.2	0.14	< 5	40	< 0.5	< 2	1.06	< 0.5	53	550	39	3.41	< 10	< 1	< 0.01	< 10	10.65	305
90CM543R	205 294	< 5	< 0.2	0.17	20	40	< 0.5	< 2	1.16	< 0.5	75	658	17	4.65	< 10	< 1	< 0.01	< 10	9.82	510
90CM544R	205 294	525	0.2	1.39	10	70	< 0.5	< 2	0.50	< 0.5	3	18	82	4.31	< 10	< 1	0.42	10	0.67	160
90CM545R	205 294	460	< 0.2	2.36	90	50	< 0.5	< 2	1.26	< 0.5	12	22	409	5.96	< 10	< 1	0.36	10	1.03	365
90CM546R	205 294	50	1.0	0.08	< 5	< 10	< 0.5	< 2	0.15	< 0.5	13	195	668	2.51	< 10	< 1	< 0.01	< 10	0.06	105
90CM547R	205 294	< 5	0.2	0.08	< 5	10	< 0.5	< 2	0.04	< 0.5	1	181	18	0.48	< 10	< 1	< 0.01	< 10	0.04	125
90CM548R	205 294	5	0.8	3.09	< 5	50	< 0.5	< 2	2.83	< 0.5	13	180	422	4.43	< 10	< 1	0.10	< 10	1.59	545
90CM549R	205 294	10	0.4	3.06	< 5	40	< 0.5	< 2	2.52	< 0.5	20	139	114	2.55	< 10	< 1	0.06	< 10	1.05	475
90CM550R	205 294	10	< 0.2	5.75	< 5	130	< 0.5	< 2	3.92	< 0.5	17	43	55	5.04	< 10	< 1	0.19	< 10	1.54	500
90CM551R	205 294	15	< 0.2	4.00	< 5	130	< 0.5	< 2	2.75	< 0.5	22	37	102	5.36	< 10	< 1	0.23	< 10	2.01	610
90CM552R	205 294	75	1.0	3.50	< 5	120	< 0.5	< 2	2.62	< 0.5	15	45	650	7.53	< 10	< 1	0.21	< 10	2.07	765
90CM553R	205 294	230	3.0	4.12	< 5	120	< 0.5	< 2	1.64	< 0.5	12	104	2580	7.44	< 10	< 1	1.19	< 10	1.97	610
90CM554R	205 294	200	2.4	5.48	< 5	140	< 0.5	< 2	1.57	< 0.5	24	53	2430	8.02	< 10	< 1	1.48	< 10	2.62	680
90CM555R	205 294	10	3.2	1.81	< 5	450	1.5	< 2	2.23	< 0.5	17	120	42	4.32	40	< 1	0.57	200	2.54	675
90CM556R	205 294	8880	1.8	1.35	40	270	< 0.5	< 2	4.23	< 0.5	20	80	76	7.66	< 10	< 1	0.39	< 10	0.61	1595

DAYTON
FRACTION
(Gross)

CERTIFICATION:



Chemex Labs Ltd.

Analytical Chemists * Geochemists * Registered Assayers
994 West Glendale Ave., Suite 7, Sparks,
Nevada, U.S.A. 89431
PHONE: 702-356-5395

CROWN RESOURCE CORPORATION

820 16TH ST. STE. 415
DENVER, COLORADO
80202

Page No. : 1-B
Total Pages : 1
Invoice Date : 5-SEP-90
Invoice No. : I-9021839
P.O. Number :

Project : MIDWAY
Comments : ATTN: CHRIS HERALD CC: J. SHANNON CC: R. MILLER

CERTIFICATE OF ANALYSIS A9021839

DAYTON
FRACTION
GROUP

SAMPLE DESCRIPTION	PREP CODE	Mo ppm	Na %	Ni ppm	P ppm	Pb ppm	Sb ppm	Sc ppm	Sr ppm	Ti %	Tl ppm	U ppm	V ppm	W ppm	Zn ppm
90CM541R	205 294	1	< 0.01	1330	110	< 2	< 5	6	51	< 0.01	20	< 10	18	< 10	24
90CM542R	205 294	< 1	0.01	1125	40	< 2	< 5	5	102	< 0.01	20	< 10	11	< 10	22
90CM543R	205 294	< 1	< 0.01	1495	150	< 2	< 5	6	141	< 0.01	10	< 10	13	< 10	28
90CM544R	205 294	7	0.05	12	550	2	< 5	4	80	< 0.01	< 10	< 10	50	< 10	28
90CM545R	205 294	2	0.05	22	610	8	5	7	67	0.01	< 10	< 10	64	< 10	50
90CM546R	205 294	2	< 0.01	31	240	2	< 5	< 1	2	< 0.01	< 10	< 10	21	< 10	16
90CM547R	205 294	< 1	< 0.01	8	130	< 2	< 5	1	2	< 0.01	< 10	< 10	6	< 10	4
90CM548R	205 294	3	0.09	86	2900	8	5	5	61	0.06	< 10	< 10	163	< 10	44
90CM549R	205 294	< 1	0.17	72	480	8	5	5	88	0.07	< 10	< 10	70	< 10	44
90CM550R	205 294	< 1	0.70	15	1320	2	5	7	425	0.10	< 10	< 10	228	10	60
90CM551R	205 294	< 1	0.41	15	1570	< 2	5	9	236	0.09	< 10	< 10	193	10	78
90CM552R	205 294	1	0.36	22	1000	< 2	5	10	184	0.07	< 10	< 10	280	10	78
90CM553R	205 294	1	0.26	26	140	< 2	< 5	19	65	0.13	< 10	< 10	195	< 10	132
90CM554R	205 294	1	0.36	26	110	< 2	5	23	64	0.15	< 10	< 10	229	10	134
90CM555R	205 294	< 1	0.16	60	4990	16	< 5	6	491	0.19	< 10	< 10	101	< 10	112
90CM556R	205 294	< 1	0.04	9	2050	20	< 5	8	115	0.04	< 10	< 10	31	< 10	68

CERTIFICATION:



Chemex Labs Inc.

Analytical Chemists * Geochemists * Registered Assayers
 994 WEST GLENDALE AVE., SUITE 7, SPARKS,
 NEVADA, U.S.A. 89431
 PHONE (702) 356-5395

CROWN RESOURCE CORPORATION

820 16TH ST., STE. 415
 DENVER, COLORADO
 80202

Project : MIDWAY
 Comments: ATTN: CHRIS HERALD CC: J. SHANNON CC: R. MILLER

Page 1 of 1-A
 Total Pages: 1
 Date: 14-AUG-90
 Invoice #: I-9020445
 P.O. # :

CERTIFICATE OF ANALYSIS A9020445

SAMPLE DESCRIPTION	PREP CODE		Au ppb	Au FA	Ag	Al	As	Ba	Be	Bi	Ca	Cd	Co	Cr	Cu	Fe	Ga	Hg	K	La	Mg
	FA+AA	oz/T	ppm	%	ppm	%	ppm	ppm	ppm	ppm	%	ppm	ppm	ppm	ppm	%	ppm	ppm	%	ppm	%
90 CM 481R	205	294	25	—	1.2	0.15	25	570	< 0.5	4	0.08	< 0.5	1	205	77	1.57	< 10	< 1	0.15	< 10	0.02
90 CM 482R	205	294	< 5	—	0.4	1.75	50	420	< 0.5	< 2	8.44	1.0	29	189	239	4.83	< 10	< 1	0.78	< 10	3.26
90 CM 483R	205	294	25	—	< 0.2	2.62	< 5	1170	< 0.5	2	0.45	< 0.5	20	110	43	5.62	< 10	< 1	0.88	20	1.69
90 CM 484R	205	294	10	—	194.0	0.48	15	130	< 0.5	444	0.58	2.0	7	124	50	1.78	< 10	< 1	0.13	10	0.42
90 CM 485R	205	294	140	—	1.8	2.48	< 5	690	< 0.5	6	2.85	< 0.5	28	97	90	6.11	< 10	< 1	0.66	< 10	2.13
90 CM 486R	205	294	5	—	1.2	2.60	< 5	290	< 0.5	6	1.99	< 0.5	23	79	153	5.49	< 10	< 1	1.08	< 10	1.72
90 CM 487R	205	294	15	—	4.4	0.75	5	200	< 0.5	14	1.13	4.5	6	85	111	2.14	< 10	< 1	0.27	< 10	0.49
90 CM 488R	205	294	45	—	< 0.2	2.20	< 5	400	< 0.5	< 2	2.54	< 0.5	23	176	39	5.01	< 10	< 1	0.44	< 10	2.16
90 CM 489R	205	294	15	—	< 0.2	2.22	5	900	< 0.5	4	0.85	< 0.5	27	304	108	5.81	< 10	< 1	0.73	10	2.24
90 CM 490R	205	294	1520	—	< 0.2	1.86	< 5	50	< 0.5	6	0.52	< 0.5	26	92	302	7.39	< 10	< 1	0.65	< 10	1.76
90 CM 491R	205	294	2070	—	< 0.2	1.36	< 5	60	< 0.5	< 2	0.25	< 0.5	8	86	545	>15.00	< 10	< 1	0.67	< 10	0.79
90 CM 492R	205	294	985	—	< 0.2	2.36	< 5	40	< 0.5	6	0.49	< 0.5	39	62	667	8.53	< 10	< 1	0.98	< 10	2.72
90 CM 493R	205	294	280	—	< 0.2	2.00	< 5	90	< 0.5	4	0.26	< 0.5	20	34	249	5.86	< 10	< 1	1.36	< 10	1.90
90 CM 494R	205	294	410	—	< 0.2	2.05	< 5	50	< 0.5	2	0.26	< 0.5	13	34	164	5.98	< 10	< 1	0.89	< 10	1.63
90 CM 495R	205	294	625	—	0.2	2.84	5	160	< 0.5	12	0.65	< 0.5	33	208	2990	6.30	10	< 1	1.19	10	2.78
90 CM 496R	205	294	220	—	< 0.2	2.70	< 5	170	< 0.5	8	0.59	< 0.5	43	121	1840	5.73	< 10	< 1	1.43	10	2.42
90 CM 497R	205	294	705	—	2.2	0.84	15	40	< 0.5	8	8.26	< 0.5	19	85	395	3.85	< 10	< 1	0.35	< 10	3.58
90 CM 498R	205	294	>10000	0.414	27.8	0.92	5	30	< 0.5	52	6.20	1.5	38	131	880	9.84	< 10	< 1	0.29	< 10	3.14
90 CM 499R	205	294	180	—	< 0.2	1.23	5	60	< 0.5	< 2	5.28	< 0.5	17	182	159	3.07	< 10	< 1	0.26	< 10	2.91
90 CM 500R	205	294	65	—	0.6	4.25	< 5	30	< 0.5	10	0.35	0.5	51	134	2230	9.55	< 10	< 1	0.19	< 10	3.74
90 CM 501R	205	294	125	—	0.2	2.67	10	10	< 0.5	6	1.47	< 0.5	28	36	1040	6.39	< 10	< 1	0.09	< 10	2.33

DANSON
 FRACTION
 501R?

CERTIFICATION :

B. Caughlin



Chemex Labs Inc.

Analytical Chemists * Geochemists * Registered Assayers
994 WEST GLENDALE AVE., SUITE 7, SPARKS,
NEVADA, U.S.A. 89431
PHONE (702) 356-5395

CROWN RESOURCE CORPORATION

820 16TH ST., STE. 415
DENVER, COLORADO
80202

Project : MIDWAY

Comments: ATTN: CHRIS HERALD CC: J. SHANNON CC: R. MILLER

Page : 1-B
Tot. Pages: 1
Date : 14-AUG-90
Invoice #: I-9020445
P.O. # :

CERTIFICATE OF ANALYSIS A9020445

SAMPLE DESCRIPTION	PREP CODE		Mn	Mo	Na	Ni	P	Pb	Sb	Sc	Sr	Ti	Tl	U	V	W	Zn
			ppm	ppm	%	ppm	ppm	ppm	ppm	ppm	ppm	%	ppm	ppm	ppm	ppm	ppm
90 CM 481R	205	294	105	11	< 0.01	8	420	76	< 5	< 1	22	< 0.01	< 10	< 10	17	< 10	14
90 CM 482R	205	294	3170	3	0.01	173	1500	20	< 5	12	239	0.02	< 10	< 10	71	10	218
90 CM 483R	205	294	520	< 1	0.03	22	980	< 2	< 5	11	13	0.17	< 10	< 10	141	< 10	106
90 CM 484R	205	294	770	< 1	< 0.01	15	140	>10000	< 5	2	18	< 0.01	< 10	< 10	20	< 10	138
90 CM 485R	205	294	720	< 1	0.05	39	1450	96	< 5	16	60	0.27	< 10	< 10	176	< 10	94
90 CM 486R	205	294	1560	1	0.11	42	2610	38	< 5	5	44	0.32	< 10	< 10	130	< 10	156
90 CM 487R	205	294	415	< 1	0.03	6	440	272	< 5	1	24	0.03	< 10	< 10	25	< 10	682
90 CM 488R	205	294	895	1	0.01	52	690	8	< 5	10	71	0.07	< 10	< 10	98	< 10	98
90 CM 489R	205	294	420	3	0.03	100	1390	< 2	< 5	9	22	0.50	< 10	< 10	145	< 10	110
90 CM 490R	205	294	395	< 1	0.05	44	100	< 2	< 5	22	11	0.07	< 10	< 10	190	< 10	42
90 CM 491R	205	294	150	8	0.12	15	210	< 2	< 5	18	27	0.06	< 10	< 10	225	< 50	34
90 CM 492R	205	294	360	1	0.05	29	80	< 2	< 5	30	17	0.07	< 10	< 10	269	< 10	46
90 CM 493R	205	294	315	1	0.06	14	220	2	< 5	28	13	0.17	< 10	< 10	195	< 10	34
90 CM 494R	205	294	330	< 1	0.05	14	250	< 2	< 5	27	11	0.12	< 10	< 10	163	< 10	30
90 CM 495R	205	294	200	9	0.04	71	850	< 2	< 5	16	52	0.14	< 10	< 10	174	< 10	38
90 CM 496R	205	294	180	4	0.05	47	740	< 2	< 5	17	53	0.16	< 10	< 10	173	< 10	30
90 CM 497R	205	294	775	< 1	< 0.01	110	680	2	< 5	9	152	< 0.01	< 10	< 10	31	< 10	28
90 CM 498R	205	294	655	1	< 0.01	183	630	124	5	8	142	< 0.01	< 10	< 10	33	< 10	46
90 CM 499R	205	294	600	< 1	< 0.01	115	630	< 2	< 5	10	120	< 0.01	< 10	< 10	46	< 10	34
90 CM 500R	205	294	835	1	0.04	36	70	< 2	< 5	22	8	0.08	< 10	< 10	226	< 10	126
90 CM 501R	205	294	645	1	0.04	19	470	< 2	< 5	20	44	0.01	< 10	< 10	207	< 10	76

Dayton
Fraction
Group

CERTIFICATION :



Chemex Labs Inc.

Analytical Chemists • Geochemists • Registered Assayers
994 WEST GLENDALE AVE., SUITE 7, SPARKS,
NEVADA, U.S.A. 89431
PHONE (702) 356-5395

CROWN RESOURCE CORPORATION

820 16TH ST., STE. 415
DENVER, COLORADO
80202

Project : MIDWAY

Comments: ATTN: CHRIS HERALD CC: J. SHANNON CC: R. MILLER

Page # 1-A
Tot. P. s: 1
Date : 15-AUG-90
Invoice #: I-9020690
P.O. # :

CERTIFICATE OF ANALYSIS A9020690

DAYEN FRACTION GROUP?

SAMPLE DESCRIPTION	PREP CODE	Au ppb FA+AA	Ag ppm	Al %	As ppm	Ba ppm	Be ppm	Bi ppm	Ca %	Cd ppm	Co ppm	Cr ppm	Cu ppm	Fe %	Ga ppm	Hg ppm	K %	La ppm	Mg %	Mn ppm
90 CM 502	205 294	65	< 0.2	2.19	< 5	50	< 0.5	8	0.51	0.5	9	44	142	6.08	< 10	< 1	0.16	< 10	1.05	170
90 CM 503	205 294	45	< 0.2	2.13	5	100	< 0.5	2	0.17	< 0.5	5	80	86	3.50	< 10	< 1	0.44	10	1.53	170
90 CM 504	205 294	195	< 0.2	2.90	< 5	160	< 0.5	< 2	0.75	< 0.5	41	555	1030	4.81	< 10	< 1	1.97	< 10	3.87	195
90 CM 505	205 294	45	< 0.2	2.30	< 5	220	< 0.5	< 2	1.74	< 0.5	24	329	223	4.22	< 10	1	1.18	< 10	2.88	260
90 CM 506	205 294	140	< 0.2	3.05	< 5	130	< 0.5	< 2	1.77	< 0.5	20	445	788	4.82	< 10	1	1.14	< 10	4.06	290
90 CM 507	205 294	1080	< 0.2	2.41	< 5	140	< 0.5	< 2	0.91	< 0.5	21	304	1970	4.08	< 10	< 1	1.04	< 10	3.14	220
90 CM 508	205 294	150	< 0.2	2.74	< 5	160	< 0.5	2	0.75	< 0.5	34	442	796	5.28	< 10	< 1	1.68	< 10	3.52	220
90 CM 509	205 294	4580	< 0.2	2.86	5	130	< 0.5	< 2	0.42	< 0.5	66	539	6540	6.99	< 10	< 1	1.34	10	3.65	315
90 CM 510	205 294	1030	< 0.2	1.32	< 5	100	< 0.5	< 2	0.29	< 0.5	35	100	7470	2.18	< 10	1	0.51	< 10	1.57	175
90 CM 511	205 294	85	< 0.2	2.48	< 5	160	< 0.5	< 2	1.71	< 0.5	11	322	283	4.49	< 10	< 1	0.81	< 10	3.05	300
90 CM 512	205 294	180	< 0.2	2.98	< 5	200	< 0.5	< 2	1.52	0.5	15	444	587	4.53	< 10	1	1.94	< 10	3.92	290
90 CM 513	205 294	480	< 0.2	3.06	< 5	150	< 0.5	< 2	0.78	< 0.5	44	572	1070	5.32	< 10	1	1.90	< 10	4.08	245
90 CM 514	205 294	590	< 0.2	3.12	5	170	< 0.5	< 2	1.28	< 0.5	43	540	1120	5.05	< 10	2	2.08	< 10	4.24	300
90 CM 515	205 294	165	< 0.2	2.46	< 5	150	< 0.5	< 2	0.69	< 0.5	30	385	2070	4.19	< 10	1	1.25	< 10	3.18	225
90 CM 516	205 294	70	< 0.2	2.55	< 5	120	< 0.5	< 2	1.05	< 0.5	28	168	732	5.08	< 10	< 1	1.23	< 10	2.79	205
90 CM 517	205 294	115	< 0.2	4.68	< 5	210	< 0.5	< 2	1.77	< 0.5	43	281	540	7.01	< 10	2	2.46	< 10	4.01	300
90 CM 518	205 294	115	< 0.2	3.11	< 5	100	< 0.5	4	0.31	< 0.5	12	67	360	6.82	< 10	< 1	0.73	< 10	2.46	325
90 CM 519	205 294	95	< 0.2	1.82	< 5	50	< 0.5	4	0.06	< 0.5	7	77	367	6.19	< 10	< 1	0.43	< 10	1.05	100
90 CM 520	205 294	25	< 0.2	0.89	10	50	< 0.5	< 2	0.08	< 0.5	2	121	58	2.09	< 10	< 1	0.22	10	0.49	45
90 CM 521	205 294	20	0.4	0.47	10	40	< 0.5	< 2	0.03	< 0.5	2	144	28	1.60	< 10	< 1	0.18	< 10	0.11	45
90 CM 522	205 294	< 5	< 0.2	0.54	< 5	30	< 0.5	< 2	3.85	< 0.5	11	112	20	2.22	< 10	< 1	0.20	< 10	1.11	335
90 CM 523	205 294	4650	4.2	0.54	< 5	30	< 0.5	8	7.33	0.5	20	123	1760	5.93	< 10	< 1	0.31	< 10	3.26	700

CERTIFICATION *B. Caughlin*



Chemex Labs Inc.

Analytical Chemists * Geochemists * Registered Assayers
 994 WEST GLENDALE AVE., SUITE 7, SPARKS,
 NEVADA, U.S.A. 89431
 PHONE (702) 356-5395

CROWN RESOURCE CORPORATION

820 16TH ST., STE. 415
 DENVER, COLORADO
 80202

Project : MIDWAY

Comments: ATTN: CHRIS HERALD CC: J. SHANNON CC: R. MILLER

Page # 1-B
 Tot. P. 1
 Date : 15-AUG-90
 Invoice # : I-9020690
 P.O. # :

CERTIFICATE OF ANALYSIS A9020690

DAYTON FRACTION GROUP

SAMPLE DESCRIPTION	PREP CODE		Mo	Na	Ni	P	Pb	Sb	Sc	Sr	Ti	Tl	U	V	W	Zn
			ppm	%	ppm	ppm	ppm	ppm	ppm	ppm	%	ppm	ppm	ppm	ppm	ppm
90 CM 502	205	294	2	0.05	24	870	8	< 5	4	26	< 0.01	< 10	< 10	85	< 10	14
90 CM 503	205	294	< 1	0.09	24	780	6	< 5	7	32	0.04	< 10	< 10	152	< 10	18
90 CM 504	205	294	5	0.11	156	860	< 2	< 5	8	55	0.26	< 10	< 10	171	< 10	22
90 CM 505	205	294	13	0.09	83	1050	< 2	< 5	10	103	0.25	< 10	< 10	169	< 10	22
90 CM 506	205	294	6	0.06	159	960	6	< 5	11	115	0.17	< 10	< 10	187	< 10	22
90 CM 507	205	294	17	0.07	101	690	2	< 5	10	52	0.17	< 10	< 10	142	< 10	24
90 CM 508	205	294	21	0.07	129	760	4	< 5	8	48	0.21	< 10	< 10	158	< 10	22
90 CM 509	205	294	83	0.06	175	810	6	5	7	37	0.17	< 10	< 10	157	< 10	38
90 CM 510	205	294	8	0.08	57	470	< 2	< 5	7	23	0.16	< 10	< 10	76	< 10	28
90 CM 511	205	294	1	0.06	88	990	2	< 5	11	88	0.17	< 10	< 10	156	< 10	22
90 CM 512	205	294	3	0.05	128	740	< 2	< 5	10	90	0.26	< 10	< 10	172	< 10	24
90 CM 513	205	294	9	0.08	202	800	2	< 5	8	59	0.23	< 10	< 10	171	< 10	24
90 CM 514	205	294	6	0.08	158	830	2	< 5	10	82	0.24	< 10	< 10	183	< 10	24
90 CM 515	205	294	8	0.10	125	740	2	< 5	8	48	0.19	< 10	< 10	142	< 10	22
90 CM 516	205	294	6	0.10	61	770	2	< 5	11	46	0.31	< 10	< 10	168	< 10	18
90 CM 517	205	294	13	0.27	79	700	< 2	< 5	19	167	0.28	< 10	< 10	181	< 10	28
90 CM 518	205	294	1	0.06	19	310	2	< 5	22	21	0.07	< 10	< 10	184	< 10	30
90 CM 519	205	294	3	0.07	5	130	6	< 5	19	12	0.02	< 10	< 10	209	< 10	26
90 CM 520	205	294	< 1	0.02	15	350	8	< 5	2	14	< 0.01	< 10	< 10	25	< 10	12
90 CM 521	205	294	1	< 0.01	7	350	4	< 5	1	4	< 0.01	< 10	< 10	11	< 10	6
90 CM 522	205	294	< 1	< 0.01	24	270	6	< 5	5	85	< 0.01	< 10	< 10	22	< 10	10
90 CM 523	205	294	1	< 0.01	68	410	34	< 5	8	143	< 0.01	< 10	< 10	28	< 10	28

CERTIFICATION

SOIL SAMPLE ASSAYS



Chemex Labs Ltd.

Analytical Chemists * Geochemists * Registered Assayers
994 West Glendale Ave., Suite 7, Sparks,
Nevada, U.S.A. 89431
PHONE: 702-356-5395

J: CROWN RESOURCE CORPORATION

820 16TH ST., STE. 415
DENVER, COLORADO
80202

Page No. : 2
Total Pages : 3
Invoice Date: 18-OCT-90
Invoice No. : I-9024635
P.O. Number :

Project : MIDWAY
Comments: ATTN:CHRIS HERALD, CC:J.SHANNON, CC:R.MILLER

CERTIFICATE OF ANALYSIS

A9024635

SAMPLE DESCRIPTION	PREP CODE	Au ppb FA+AA											
38.200N 45.025E	201 --	10											
38.200N 45.050E	201 --	< 5											
38.200N 45.075E	201 --	10											
38.200N 45.100E	201 --	< 5											
38.200N 45.150E	201 --	< 5											
38.200N 45.175E	201 --	< 5											
38.200N 45.200E	201 --	< 5											
38.200N 45.225E	201 --	< 5											
38.200N 45.275E	201 --	< 5											
38.200N 45.300E	201 --	< 5											
38.200N 45.325E	201 --	< 5											
38.200N 45.350E	201 --	< 5											
38.200N 45.400E	201 --	< 5											
38.200N 45.425E	201 --	< 5											
38.200N 45.450E	201 --	< 5											
38.200N 45.475E	201 --	< 5											
38.200N 45.500E	201 --	< 5											
38.200N 45.525E	201 --	< 5											
38.200N 45.550E	201 --	< 5											
38.200N 45.575E	201 --	< 5											
38.200N 45.600E	201 --	< 5											
38.200N 45.625E	201 --	< 5											
38.200N 45.650E	201 --	< 5											
38.200N 45.675E	201 --	< 5											
38.200N 45.700E	201 --	< 5											
38.200N 45.725E	201 --	< 5											
38.200N 45.750E	201 --	< 5											
38.200N 45.775E	201 --	< 5											
38.200N 45.800E	201 --	< 5											
38.200N 45.825E	201 --	< 5											
38.200N 45.850E	201 --	< 5											
38.200N 45.875E	201 --	< 5											
38.200N 45.900E	201 --	< 5											
38.200N 45.925E	201 --	< 5											
38.200N 45.950E	201 --	< 5											
38.200N 45.975E	201 --	< 5											
38.200N 46.000E	201 --	< 5											
38.200N 46.025E	201 --	< 5											
38.200N 46.050E	201 --	< 5											
43.920E 38.600N	201 --	50											

DAYTON FRACTION GROUP

CERTIFICATION: Stuart Bickler



Chemex Labs Ltd.

Analytical Chemists * Geochemists * Registered Assayers
994 West Glendale Ave., Suite 7, Sparks,
Nevada, U.S.A. 89431
PHONE: 702-356-5395

CROWN RESOURCE CORPORATION

820 16TH ST., STE. 415
DENVER, COLORADO
80202

Page No. : 2
Total Pages : 2
Invoice Date: 22-OCT-90
Invoice No. : I-9024997
P.O. Number :

Project : MIDWAY
Comments: ATTN: CHRIS HERALD CC: J. SHANNON CC: R. MILLER

CERTIFICATE OF ANALYSIS A9024997

SAMPLE DESCRIPTION	PREP CODE	Au ppb FA+AA											
38.400N 44.025E	201 --	< 5											
38.400N 44.050E	201 --	< 5											
38.400N 44.075E	201 --	< 5											
38.400N 44.100E	201 --	< 5											
38.400N 44.125E	201 --	< 5											
38.400N 44.150E	201 --	10											
38.400N 44.175E	201 --	135											
38.400N 44.200E	201 --	40											
38.400N 44.225E	201 --	15											
38.400N 44.250E	201 --	170											
38.400N 44.275E	201 --	425											
38.400N 44.300E	201 --	50											
38.400N 44.350E	201 --	30											
38.400N 44.375E	201 --	20											
38.400N 44.400E	201 --	15											
38.400N 44.425E	201 --	10											
38.400N 44.450E	201 --	460											
38.400N 44.475E	201 --	25											
38.400N 44.500E	201 --	15											
38.400N 44.525E	201 --	< 5											
38.400N 44.550E	201 --	10											
38.400N 44.575E	201 --	< 5											
38.400N 44.625E	201 --	< 5											
38.400N 44.650E	201 --	< 5											
38.400N 44.675E	201 --	< 5											
38.400N 44.700E	201 --	< 5											
38.400N 44.725E	201 --	< 5											
38.400N 44.750E	201 --	< 5											
38.400N 44.775E	201 --	< 5											
38.400N 44.800E	201 --	< 5											
38.400N 44.825E	201 --	< 5											
38.400N 44.850E	201 --	< 5											
38.400N 44.875E	201 --	15											
38.400N 44.900E	201 --	< 5											
38.400N 44.925E	201 --	< 5											
38.400N 44.950E	201 --	< 5											
38.400N 44.975E	201 --	< 5											
38.400N 45.000E	201 --	< 5											

DAYTON FRACTION GROUP

CERTIFICATION: Hunt/Buchler



Chemex Labs Ltd.

Analytical Chemists * Geochemists * Registered Assayers
994 West Glendale Ave., Suite 7, Sparks,
Nevada, U.S.A. 89431
PHONE: 702-356-5395

Oct 22 / 90

CROWN RESOURCE CORPORATION

820 16TH ST., STE. 415
DENVER, COLORADO
80202

Page No. : 1
Total Pages : 2
Invoice Date: 22-OCT-90
Invoice No. : I-9024997
P.O. Number :

Project : MIDWAY
Comments: ATTN: CHRIS HERALD CC: J. SHANNON CC: R. MILLER

CERTIFICATE OF ANALYSIS A9024997

Day 20 Fraction Group

SAMPLE DESCRIPTION	PREP CODE	Au ppb FA+AA											
38.300N 44.000E	201 --	< 5											
38.300N 44.025E	201 --	< 5											
38.300N 44.050E	201 --	< 5											
38.300N 44.075E	201 --	< 5											
38.300N 44.100E	201 --	< 5											
38.300N 44.125E	201 --	< 5											
38.300N 44.150E	201 --	< 5											
38.300N 44.175E	201 --	5											
38.300N 44.200E	201 --	55											
38.300N 44.225E	201 --	120											
38.300N 44.250E	201 --	20											
38.300N 44.275E	201 --	30											
38.300N 44.300E	201 --	25											
38.300N 44.325E	201 --	85											
38.300N 44.350E	201 --	350											
38.300N 44.375E	201 --	15											
38.300N 44.400E	201 --	50											
38.300N 44.425E	201 --	35											
38.300N 44.450E	201 --	65											
38.300N 44.475E	201 --	55											
38.300N 44.525E	201 --	20											
38.300N 44.550E	201 --	< 5											
38.300N 44.575E	201 --	15											
38.300N 44.600E	201 --	< 5											
38.300N 44.625E	201 --	10											
38.300N 44.650E	201 --	< 5											
38.300N 44.675E	201 --	< 5											
38.300N 44.700E	201 --	< 5											
38.300N 44.725E	201 --	< 5											
38.300N 44.750E	201 --	< 5											
38.300N 44.775E	201 --	< 5											
38.300N 44.800E	201 --	< 5											
38.300N 44.825E	201 --	< 5											
38.300N 44.850E	201 --	< 5											
38.300N 44.875E	201 --	< 5											
38.300N 44.900E	201 --	< 5											
38.300N 44.925E	201 --	< 5											
38.300N 44.950E	201 --	< 5											
38.300N 44.975E	201 --	< 5											
38.300N 45.000E	201 --	< 5											

CERTIFICATION: *David Buchler*



Chemex Labs Ltd.

Analytical Chemists * Geochemists * Registered Assayers
994 West Glendale Ave., Suite 7, Sparks,
Nevada, U.S.A. 89431
PHONE: 702-356-5395

CROWN RESOURCE CORPORATION

820 16TH ST., STE. 415
DENVER, COLORADO
80202

Page No. : 3
Total Pages : 3
Invoice Date: 21-OCT-90
Invoice No. : I-9025084
P.O. Number :

Project : MIDWAY
Comments: ATTN: CHRIS HERALD CC: J. SHANNON CC: R. MILLER

CERTIFICATE OF ANALYSIS A9025084

Dayton Fraction Group

SAMPLE DESCRIPTION	PREP CODE	Au ppb FA+AA											
38.700N 44.550E	201 --	10											
38.700N 44.575E	201 --	15											
38.700N 44.600E	201 --	5											
38.700N 44.625E	201 --	< 5											
38.700N 44.650E	201 --	< 5											
38.700N 44.675E	201 --	55											
38.700N 44.700E	201 --	< 5											
38.700N 44.725E	201 --	< 5											
38.700N 44.750E	201 --	< 5											
38.700N 44.775E	201 --	< 5											
38.700N 44.800E	201 --	< 5											
38.700N 44.825E	201 --	< 5											
38.700N 44.850E	201 --	< 5											
38.700N 44.875E	201 --	< 5											
38.700N 44.900E	201 --	< 5											
38.700N 44.950E	201 --	< 5											
38.700N 44.975E	201 --	20											
38.700N 45.000E	201 --	< 5											
43.920N 39.650E	201 --	< 5											
43.920N 39.700E	201 --	< 5											
43.920N 39.750E	201 --	< 5											
43.920N 39.800E	201 --	< 5											
43.920N 39.850E	201 --	< 5											
43.920N 39.900E	201 --	< 5											
43.920N 39.950E	201 --	< 5											
43.920N 40.000E	201 --	< 5											

CERTIFICATION:

Hart Bichler



Chemex Labs Ltd.

Analytical Chemists * Geochemists * Registered Assayers
994 West Glendale Ave., Suite 7, Sparks,
Nevada, U.S.A. 89431
PHONE: 702-356-5395

J: CROWN RESOURCE CORPORATION

820 16TH ST., STE. 415
DENVER, COLORADO
80202

Page No. : 2
Total Pages : 3
Invoice Date: 21-OCT-90
Invoice No. : I-9025084
P.O. Number :

Project : MIDWAY
Comments: ATTN: CHRIS HERALD CC: J. SHANNON CC: R. MILLER

CERTIFICATE OF ANALYSIS A9025084

DAYEN FRACTION Group
DAYEN FRACTION Group

SAMPLE DESCRIPTION	PREP CODE	Au ppb FA+AA										
38.500N 44.475E	201	--	<	5								
38.500N 44.500E	201	--	<	5								
38.500N 44.550E	201	--	<	5								
38.500N 44.575E	201	--	<	5								
38.500N 44.600E	201	--	<	5								
38.500N 44.625E	201	--	<	5								
38.500N 44.650E	201	--	<	5								
38.500N 44.675E	201	--	<	5								
38.500N 44.700E	201	--	<	5								
38.500N 44.725E	201	--	<	5								
38.500N 44.750E	201	--	<	5								
38.500N 44.775E	201	--	<	5								
38.500N 44.800E	201	--	<	5								
38.500N 44.825E	201	--	<	5								
38.500N 44.850E	201	--	<	5								
38.500N 44.875E	201	--	<	5								
38.500N 44.900E	201	--	<	5								
38.500N 44.925E	201	--	<	5								
38.500N 45.000E	201	--	<	5								
38.700N 44.000E	201	--	<	5								
38.700N 44.025E	201	--		30								
38.700N 44.050E	201	--	<	5								
38.700N 44.075E	201	--		10								
38.700N 44.100E	201	--	<	5								
38.700N 44.125E	201	--	<	5								
38.700N 44.150E	201	--	<	5								
38.700N 44.175E	201	--	<	5								
38.700N 44.200E	201	--	<	5								
38.700N 44.225E	201	--	<	5								
38.700N 44.250E	201	--	<	5								
38.700N 44.275E	201	--		10								
38.700N 44.300E	201	--	<	5								
38.700N 44.325E	201	--		50								
38.700N 44.350E	201	--		5								
38.700N 44.375E	201	--		10								
38.700N 44.400E	201	--		150								
38.700N 44.425E	201	--	<	5								
38.700N 44.450E	201	--	<	5								
38.700N 44.475E	201	--		25								
38.700N 44.500E	201	--	<	5								

CERTIFICATION: Hart Bichler



Chemex Labs Ltd.

Analytical Chemists * Geochemists * Registered Assayers
994 West Glendale Ave., Suite 7, Sparks,
Nevada, U.S.A. 89431
PHONE: 702-356-5395

CROWN RESOURCE CORPORATION

820 16TH ST., STE. 415
DENVER, COLORADO
80202

Page Num: :2
Total Pages : 2
Invoice Date: 26-OCT-90
Invoice No.: I-9025392
P.O. Number :

Project : MIDWAY
Comments: ATTN: CHRIS HERALD CC: J. SHANNON CC: R. MILLER

CERTIFICATE OF ANALYSIS

A9025392

Digest Fraction Group

SAMPLE DESCRIPTION	PREP CODE	Au ppb FA+AA										
45.000E 38.625N	201 --	< 5										
45.000E 38.650N	201 --	< 5										
45.000E 38.675N	201 --	< 5										
45.000E 38.700N	201 --	< 5										
45.000E 38.750N	201 --	15										

CERTIFICATION: Hart Buchler



Chemex Labs Ltd.

Analytical Chemists * Geochemists * Registered Assayers
994 West Glendale Ave., Suite 7, Sparks,
Nevada, U.S.A. 89431
PHONE: 702-356-5395

CROWN RESOURCE CORPORATION

820 16TH ST. STE. 415
DENVER, COLORADO
80202

Page Number: 1
Total Pages: 2
Invoice Date: 26-OCT-90
Invoice No.: I-9025392
P.O. Number:

Project: MIDWAY
Comments: ATTN: CHRIS HERALD CC: J. SHANNON CC: R. MILLER

CERTIFICATE OF ANALYSIS A9025392

SAMPLE DESCRIPTION	PREP CODE	Au ppb FA+AA											
45.000E 37.550N	201 --	< 5											
45.000E 37.575N	201 --	< 5											
45.000E 37.600N	201 --	< 5											
45.000E 37.625N	201 --	< 5											
45.000E 37.650N	201 --	< 5											
45.000E 37.675N	201 --	< 5											
45.000E 37.700N	201 --	40											
45.000E 37.725N	201 --	< 5											
45.000E 37.750N	201 --	< 5											
45.000E 37.775N	201 --	< 5											
45.000E 37.800N	201 --	< 5											
45.000E 37.825N	201 --	< 5											
45.000E 37.850N	201 --	< 5											
45.000E 37.875N	201 --	< 5											
45.000E 37.900N	201 --	< 5											
45.000E 37.925N	201 --	< 5											
45.000E 37.950N	201 --	35											
45.000E 37.975N	201 --	< 5											
45.000E 38.000N	201 --	< 5											
45.000E 38.025N	201 --	< 5											
45.000E 38.050N	201 --	< 5											
45.000E 38.075N	201 --	< 5											
45.000E 38.100N	201 --	< 5											
45.000E 38.125N	201 --	20											
45.000E 38.150N	201 --	< 5											
45.000E 38.175N	201 --	< 5											
45.000E 38.200N	201 --	< 5											
45.000E 38.225N	201 --	10											
45.000E 38.250N	201 --	10											
45.000E 38.275N	201 --	< 5											
45.000E 38.300N	201 --	< 5											
45.000E 38.325N	201 --	< 5											
45.000E 38.350N	201 --	< 5											
45.000E 38.375N	201 --	< 5											
45.000E 38.400N	201 --	< 5											
45.000E 38.425N	201 --	< 5											
45.000E 38.450N	201 --	< 5											
45.000E 38.475N	201 --	< 5											
45.000E 38.575N	201 --	< 5											
45.000E 38.600N	201 --	30											

Dayton Fraction
E12047

CERTIFICATION: Stuart Buchler



Chemex Labs Ltd.

Analytical Chemists * Geochemists * Registered Assayers
994 West Glendale Ave., Suite 7, Sparks,
Nevada, U.S.A. 89431
PHONE: 702-356-5395

CROWN RESOURCE CORPORATION

820 16TH ST., STE. 415
DENVER, COLORADO
80202

Page Number: 1
Total Pages: 3
Invoice Date: 18-OCT-90
Invoice No.: I-9024635
P.O. Number:

Project: MIDWAY
Comments: ATTN:CHRIS HERALD, CC:J.SHANNON, CC:R.MILLER

CERTIFICATE OF ANALYSIS

A9024635

SAMPLE DESCRIPTION	PREP CODE	Au ppb FA+AA												
38.200N 44.000E	201	--	< 5											
38.200N 44.025E	201	--	< 5											
38.200N 44.050E	201	--	< 5											
38.200N 44.075E	201	--	< 5											
38.200N 44.100E	201	--	10											
38.200N 44.125E	201	--	< 5											
38.200N 44.150E	201	--	< 5											
38.200N 44.175E	201	--	5											
38.200N 44.200E	201	--	10											
38.200N 44.225E	201	--	15											
38.200N 44.250E	201	--	225											
38.200N 44.275E	201	--	25											
38.200N 44.300E	201	--	40											
38.200N 44.325E	201	--	60											
38.200N 44.350E	201	--	440											
38.200N 44.375E	201	--	55											
38.200N 44.425E	201	--	35											
38.200N 44.450E	201	--	45											
38.200N 44.475E	201	--	80											
38.200N 44.500E	201	--	140											
38.200N 44.525E	201	--	45											
38.200N 44.550E	201	--	25											
38.200N 44.575E	201	--	< 5											
38.200N 44.600E	201	--	< 5											
38.200N 44.625E	201	--	< 5											
38.200N 44.650E	201	--	< 5											
38.200N 44.675E	201	--	< 5											
38.200N 44.700E	201	--	< 5											
38.200N 44.725E	201	--	< 5											
38.200N 44.750E	201	--	< 5											
38.200N 44.775E	201	--	< 5											
38.200N 44.800E	201	--	< 5											
38.200N 44.825E	201	--	< 5											
38.200N 44.850E	201	--	< 5											
38.200N 44.875E	201	--	< 5											
38.200N 44.900E	201	--	< 5											
38.200N 44.925E	201	--	< 5											
38.200N 44.950E	201	--	10											
38.200N 44.975E	201	--	< 5											
38.200N 45.000E	201	--	10											

DAYTON FRACTION Group

CERTIFICATION: *Stuart Buchler*

DRILL HOLE ASSAYS



Chemex Labs Ltd.

Analytical Chemists * Geochemists * Registered Assayers
212 Brooksbank Ave., North Vancouver
British Columbia, Canada V7J 2C1
PHONE: 604-984-0221

Co: CROWN RESOURCE CORPORATION
820 16TH ST., STE. 415
DENVER, COLORADO
80202

Page No. er: 1
Total Pages: 1
Invoice Date: 9-DEC-90
Invoice No.: I-9027562
P.O. Number:

Project: MIDWAY
Comments: ATTN: CHRIS HERALD CC: J. SHANNON CC: R. MILLER

CERTIFICATE OF ANALYSIS A9027562

SAMPLE DESCRIPTION	PREP CODE	Au oz/T										
DC9 000-005	208 294	0.020										
DC9 005-010	208 294	0.002										
DC9 010-015	208 294	0.002										
DC9 015-020	208 294	< 0.002										
DC9 020-025	208 294	0.002										
DC9 025-030	208 294	< 0.002										
DC9 030-035	208 294	< 0.002										
DC9 035-040	208 294	< 0.002										
DC9 040-045	208 294	0.002										
DC9 045-050	208 294	< 0.002										
DC9 050-055	208 294	0.002										
DC9 055-060	208 294	0.002										
DC9 060-065	208 294	0.002										
DC9 065-070	208 294	0.022										
DC9 070-075	208 294	0.026										
DC9 075-080	208 294	0.006										
DC9 080-085	208 294	0.010										
DC9 085-090	208 294	0.004										
DC9 090-095	208 294	0.004										
DC9 095-100	208 294	0.002										
DC9 100-105	208 294	0.010										
DC9 105-110	208 294	0.024										
DC9 110-115	208 294	0.012										
DC9 115-120	208 294	0.010										
DC9 120-125	208 294	0.505										
DC9 125-130	208 294	0.026										
DC9 130-135	208 294	0.004										
DC9 135-140	208 294	0.002										
DC9 140-145	208 294	0.004										
DC9 145-150	208 294	0.002										
DC9 150-155	208 294	0.004										
DC9 155-160	208 294	0.002										

CERTIFICATION: *W. St. Amant*



Chemex Labs Ltd.

Analytical Chemists * Geochemists * Registered Assayers
212 Brooksbank Ave., North Vancouver
British Columbia, Canada V7J 2C1
PHONE: 604-984-0221

To: CROWN RESOURCE CORPORATION

820 16TH ST., STE. 415
DENVER, COLORADO
80202

Page Number: 1
Total Pages: 2
Invoice Date: 11-DEC-90
Invoice No.: I-9027563
P.O. Number:

Project: MIDWAY

Comments: ATTN: CHRIS HERALD CC: J. SHANNON CC: R. MILLER

CERTIFICATE OF ANALYSIS

A9027563

SAMPLE DESCRIPTION	PREP CODE	Au oz/T											
DC10 000-005	208 294	0.002											
DC10 005-010	208 294	0.002											
DC10 010-015	208 294	< 0.002											
DC10 015-020	208 294	< 0.002											
DC10 020-025	208 294	< 0.002											
DC10 025-030	208 294	< 0.002											
DC10 030-035	208 294	< 0.002											
DC10 035-040	208 294	0.002											
DC10 040-045	208 294	0.002											
DC10 045-050	208 294	0.002											
DC10 050-055	208 294	0.006											
DC10 055-060	208 294	0.017											
DC10 060-065	208 294	0.004											
DC10 065-070	208 294	0.002											
DC10 070-075	208 294	0.002											
DC10 075-080	208 294	0.002											
DC10 080-085	208 294	0.002											
DC10 085-090	208 294	0.002											
DC10 090-095	208 294	< 0.002											
DC10 095-100	208 294	< 0.002											
DC10 100-105	208 294	0.002											
DC10 105-110	208 294	0.002											
DC10 110-115	208 294	0.004											
DC10 115-120	208 294	0.004											
DC10 120-125	208 294	0.002											
DC10 125-130	208 294	< 0.002											
DC10 130-135	208 294	< 0.002											
DC10 135-140	208 294	0.002											
DC10 140-145	208 294	0.002											
DC10 145-150	208 294	0.006											
DC10 150-155	208 294	0.004											
DC10 155-160	208 294	0.002											
DC10 160-165	208 294	< 0.002											
DC10 165-170	208 294	0.002											
DC10 170-175	208 294	0.002											
DC10 175-180	208 294	0.002											
DC10 180-185	208 294	0.002											
DC10 185-190	208 294	< 0.002											
DC10 190-195	208 294	0.006											
DC10 195-200	208 294	0.002											

CERTIFICATION: *W. Bentmann*



Chemex Labs Ltd.

Analytical Chemists * Geochemists * Registered Assayers
212 Brooksbank Ave., North Vancouver
British Columbia, Canada V7J 2C1
PHONE: 604-984-0221

To: CROWN RESOURCE CORPORATION

820 16TH ST., STE. 415
DENVER, COLORADO
80202

Page Number : 2
Total Pages : 2
Invoice Date : 11-DEC-90
Invoice No. : I-9027563
P.O. Number :

Project : MIDWAY
Comments : ATTN: CHRIS HERALD CC: J. SHANNON CC: R. MILLER

CERTIFICATE OF ANALYSIS

A9027563

SAMPLE DESCRIPTION	PREP CODE	Au oz/T										
DC10 200-205	208 294	< 0.002										
DC10 205-210	208 294	< 0.002										

CERTIFICATION:

W. Stenmark



Chemex Labs Ltd.

Analytical Chemists * Geochemists * Registered Assayers
212 Brooksbank Ave., North Vancouver
British Columbia, Canada V7J 2C1
PHONE: 604-984-0221

To: CROWN RESOURCE CORPORATION
820 16TH ST., STE. 415
DENVER, COLORADO
80202

Page: 1 of 1
Total Pages: 1
Invoice Date: 9-DEC-90
Invoice No.: I-9027564
P.O. Number:

Project: MIDWAY
Comments: ATTN: CHRIS HERALD CC: J. SHANNON OC: R. MILLER

CERTIFICATE OF ANALYSIS A9027564

SAMPLE DESCRIPTION	PREP CODE	Au oz/T										
DC11 000-005	208 294	0.002										
DC11 005-010	208 294	0.002										
DC11 010-015	208 294	0.002										
DC11 015-020	208 294	0.002										
DC11 020-025	208 294	0.002										
DC11 025-030	208 294	< 0.002										
DC11 030-035	208 294	< 0.002										
DC11 035-040	208 294	0.004										
DC11 040-045	208 294	0.002										
DC11 045-050	208 294	0.002										
DC11 050-055	208 294	0.002										
DC11 055-060	208 294	0.002										
DC11 060-065	208 294	0.002										
DC11 065-070	208 294	0.002										
DC11 070-075	208 294	0.002										
DC11 075-080	208 294	< 0.002										
DC11 080-085	208 294	< 0.002										
DC11 085-090	208 294	0.002										
DC11 090-095	208 294	0.002										
DC11 095-100	208 294	0.002										

CERTIFICATION: *W. J. Shannon*



Chemex Labs Ltd.

Analytical Chemists * Geochemists * Registered Assayers
212 Brooksbank Ave., North Vancouver
British Columbia, Canada V7J 2C1
PHONE: 604-984-0221

Client: CROWN RESOURCE CORPORATION

820 16TH ST., STE. 415
DENVER, COLORADO
80202

Page: 1 of 1
Total Pages: 1
Invoice Date: 9-DEC-90
Invoice No.: I-9027565
P.O. Number:

Project: MIDWAY
Comments: ATTN: CHRIS HERALD CC: J. SHANNON CC: R. MILLER

CERTIFICATE OF ANALYSIS

A9027565

SAMPLE DESCRIPTION	PREP CODE	Au oz/T											
DC12 000-005	208 294	0.004											
DC12 005-010	208 294	0.006											
DC12 010-015	208 294	< 0.002											
DC12 015-020	208 294	0.002											
DC12 020-025	208 294	0.004											
DC12 025-030	208 294	0.006											
DC12 030-035	208 294	0.002											
DC12 035-040	208 294	0.004											
DC12 040-045	208 294	0.004											
DC12 045-050	208 294	0.004											
DC12 050-055	208 294	0.002											
DC12 055-060	208 294	0.002											
DC12 060-065	208 294	0.004											
DC12 065-070	208 294	0.008											
DC12 070-075	208 294	0.004											
DC12 075-080	208 294	0.002											
DC12 080-085	208 294	0.002											
DC12 085-090	208 294	0.006											
DC12 090-095	208 294	0.004											
DC12 095-100	208 294	0.006											
DC12 100-105	208 294	0.004											
DC12 105-110	208 294	0.002											
DC12 110-115	208 294	0.004											
DC12 115-120	208 294	0.004											
DC12 120-125	208 294	0.004											
DC12 125-130	208 294	0.002											
DC12 130-135	208 294	0.006											
DC12 135-140	208 294	0.004											
DC12 140-145	208 294	0.004											
DC12 145-150	208 294	0.006											
DC12 150-155	208 294	0.002											
DC12 155-160	208 294	0.004											
DC12 160-165	208 294	0.002											
DC12 165-170	208 294	0.008											
DC12 170-175	208 294	0.002											
DC12 175-180	208 294	< 0.002											
DC12 180-185	208 294	0.002											
DC12 185-190	208 294	0.002											
DC12 190-195	208 294	0.002											
DC12 195-200	208 294	0.002											

CERTIFICATION:

W. San Martin



Chemex Labs Ltd.

Analytical Chemists * Geochemists * Registered Assayers
212 Brooksbank Ave., North Vancouver
British Columbia, Canada V7J 2C1
PHONE: 604-984-0221

To: CROWN RESOURCE CORPORATION
820 16TH ST., STE. 415
DENVER, COLORADO
80202

Page 1 of 1
Total Pages : 1
Invoice Date : 9-DEC-90
Invoice No. : I-9027566
P.O. Number :

Project : MIDWAY
Comments : ATTN: CHRIS HERALD CC: J. SHANNON CC: R. MILLER

CERTIFICATE OF ANALYSIS

A9027566

SAMPLE DESCRIPTION	PREP CODE	Au oz/T									
DC13 000-005	208 294	0.006									
DC13 005-010	208 294	0.004									
DC13 010-015	208 294	0.006									
DC13 015-020	208 294	0.008									
DC13 020-025	208 294	0.004									
DC13 025-030	208 294	0.008									
DC13 030-035	208 294	0.008									
DC13 035-040	208 294	0.006									
DC13 040-045	208 294	0.002									
DC13 045-050	208 294	0.004									
DC13 050-055	208 294	0.002									
DC13 055-060	208 294	0.006									
DC13 060-065	208 294	0.004									
DC13 065-070	208 294	0.010									
DC13 070-075	208 294	0.008									
DC13 075-080	208 294	0.002									
DC13 080-085	208 294	0.002									
DC13 085-090	208 294	0.002									
DC13 090-095	208 294	0.002									
DC13 095-100	208 294	0.004									

CERTIFICATION:



Chemex Labs Ltd.

Analytical Chemists * Geochemists * Registered Assayers
212 Brooksbank Ave., North Vancouver
British Columbia, Canada V7J 2C1
PHONE: 604-984-0221

To: CROWN RESOURCE CORPORATION
820 16TH ST., STE. 415
DENVER, COLORADO
80202

Page: 1 of 1
Total Pages: 1
Invoice Date: 9-DEC-90
Invoice No.: I-9027566
P.O. Number:

Project: MIDWAY
Comments: ATTN: CHRIS HERALD CC: J. SHANNON CC: R. MILLER

CERTIFICATE OF ANALYSIS

A9027566

SAMPLE DESCRIPTION	PREP CODE	Au oz/T									
DC13 000-005	208 294	0.006									
DC13 005-010	208 294	0.004									
DC13 010-015	208 294	0.006									
DC13 015-020	208 294	0.008									
DC13 020-025	208 294	0.004									
DC13 025-030	208 294	0.008									
DC13 030-035	208 294	0.008									
DC13 035-040	208 294	0.006									
DC13 040-045	208 294	0.002									
DC13 045-050	208 294	0.004									
DC13 050-055	208 294	0.002									
DC13 055-060	208 294	0.006									
DC13 060-065	208 294	0.004									
DC13 065-070	208 294	0.010									
DC13 070-075	208 294	0.008									
DC13 075-080	208 294	0.002									
DC13 080-085	208 294	0.002									
DC13 085-090	208 294	0.002									
DC13 090-095	208 294	0.002									
DC13 095-100	208 294	0.004									

CERTIFICATION: *W. J. Shannon*

APPENDIX E

DRILL LOGS

Hand base

D Dayton

CROWN RESOURCE

LOCATION: Dayton Camp

DRILL HOLE DC 9

Coords. _____ LITHOLOGY

ALTERATION (1-5)

Total Depth _____

N. _____ CLASTIC

CLAY

Collar Elev. _____

E. _____ LIMESTONE

SKARN \approx

Angle _____

Date: 12-90 DIORITE

OXIDATION

Bearing _____

Collared _____ GRANODIORITE

BLEACHING

Logged by DE

Completed _____ Volcanic

^{magnesian} ^{soils} ^{same} ^{oxide}

Page 1 of 2

	LITH	ALT	COLOR	% Py	% Po	% AsPy	% Mag	% CuPy	% Cal Cite	% QtzVn Chips	% Gnt	% Ept	COMMENTS	Au	Pts Ag	Pyrox Amph other
05	++ ++	Feot	orange br.						Tr		Tr		brilliant granodiorite		++ ++	5
10	++ ++	Pyroxide	++ green						↓		Tr		SAA		++ ++	15
15	++ ++	↓	↓						↓		↓		SAA		++ ++	30
20	++ ++	Pyroxide	cream gray						1	Tr	↓		becoming faulted?		++ ++	5
25	x x	Pyroxide	gray						3		↓		diorite		x x	35
30	x x	↓		Tr					Tr				five shales		x x	35
35	x x	Pyroxide	cream						↓				SAA		x x	40
40	x x	Pyroxide							1				SAA		x x	40
45	x x	↓	orange br.						3				minor calcite uv.?		x x	40
50	x x	Pyroxide					Tr		5		Tr+		SAA		x x	10
55	x x	↓							Tr		1/2	Tr+	SAA w/mag		x x	20
60	x x	↓		Tr					1		Tr+		SAA w/mag		x x	20
65	x x	Pyroxide	gray white	0.5					7		10		magnesian skarn diorite?		x x	15 5
70	x x	↓		↓					5		30	.5	SAA		x x	15 5
75	x x	↓		↓					Tr?		40	5	w/magnesian		x x	3 5
80	x x	↓		↓					Tr+		50	Tr	SAA		x x	3 1
85	x x	Pyroxide	greenish gray	Tr					1		5		1/2 magnesian skarn diorite		x x	5 30
90	x x	↓							↓		3		SAA		x x	Tr 20
95	x x	↓							3		Tr	Tr	SAA w/calcite w/mag		x x	Tr 20
100	x x	Pyroxide	orange white	Tr					10		Tr+		SAA faulted? strong calcite w/mag		x x	Tr 15

chlorite

Hard lens

Dayton

CROWN RESOURCE

LOCATION: DAYTON CAMP

DRILL HOLE DC 10

Coords. _____ LITHOLOGY ALTERATION (1-5) Total Depth _____
 N. _____ CLASTIC CLAY Collar Elev. _____
 E. _____ LIMESTONE SK SKARN Angle _____
 Date: 1-10-41 DIORITE OX OXIDATION Bearing _____
 Collared _____ GRANODIORITE BI BLEACHING Logged by REM
 Completed _____ Page 1 of 2

	LITH	ALT	COLOR	% Py	% Po	% AsPy	% Mag	% CuPy	% Calc	% Oliv	% Chps	% Gnt	% Ept	COMMENTS	Au	Pt & Ag	other
05	XX XX		dark green gray										Tr	Amphibole? Hornblende Dioctylite		XX XX	60
10	XX XX								Tr				Tr Tr+	SAA ex xline		XX XX	65
15	XX XX		poplite						3				Tr Tr+	SAA ↓		XX XX	65
20	XX XX		↓						5				Tr Tr	SAA ↓		XX XX	60
25	XX XX		↓						5				Tr Tr	SAA becoming fw xline		XX XX	50
30	XX XX		↓						7				Tr Tr	SAA ↓		XX XX	50
35	XX XX		↓						15	Tr			Tr Tr	SAA w/ xline		XX XX	50
40	VV VV		calcareous Popylite				Tr		↓				Tr Tr	Calcareous Tuffe?		VV VV	Tr? 35
45	VV VV		↓ + SK ↓						20			Tr	Tr Tr	SAA/magnetite sk.		VV VV	Tr? 35
50	VV VV		light gray + cream						20			5	1	SAA ↓		VV VV	Tr? 20
55	VV VV		↓						1			20	Tr	SAA ↓		VV VV	Tr? 15
60	VV VV		↓						5			20	1	SAA w/ magnetite		VV VV	Tr? 10
65	VV VV		↓						5			5	Tr+	SAA		VV VV	Tr? 40
70	VV VV		↓						5			15	1	SAA w/ magnetite		VV VV	Tr 20
75	VV VV		poplite greenish gray						↓			5	Tr	SAA		VV VV	Tr? 40
80	VV VV		lwk SK cream + greenish gray						7			15	Tr	SAA		VV VV	15
85	VV VV		↓						Tr			15	Tr	SAA/ weak igneous text		VV XX	20
90	XX XX		↓						Tr+			10		diorite/ex xline		XX XX	20
95	XX XX		poplite ↓						3			3		SAA		XX XX	50
100	XX XX		greenish gray ↓						Tr+			Tr		SAA		XX XX	50

MINERAL
Zoned
Spinel
Sphalerite

CROWN RESOURCE

LOCATION: Dayton Camp

DRILL HOLE DC 10

Coords. _____ LITHOLOGY ALTERATION (1-5) Total Depth _____

N. _____ CLASTIC CLAY Collar Elev. _____

E. _____ LIMESTONE SKARN Angle _____

Date: _____ DIORITE OXIDATION Bearing _____

Collared _____ GRANODIORITE BLEACHING Logged by REM

Completed _____ ^{Magnetite} ^{Garnet} ^{Zoisite} ^{Episk} Page 2 of 2

	LITH	ALT	COLOR	% Py	% Po	% AsPy	% Mag	% CuPy	% Cal Cite	% Qtz	% Zn	% Chips	% Gnt	% Ept	COMMENTS	Au	Prp Ag	Pyrox Amy other
105	++		pale grayish green	/					Tr+	Tr+			Tr?	Tr	Leucocratic Feldspar porphyry		++	/10
110	++		+ white	Tr									Tr?		↓ SAA		++	/10
115	++		↓										Tr?		↓ SAA		++	/10
120	++	Fract	dark greenish gray						3						↓ SAA		++	/35
125	---	↓		Tr+											Amphibole/dots?		x?	/65
130	---	↓		Tr++											↓ SAA		x?	/65
135	---	↓													↓ SAA		x	/65
140	---	↓	Exp											Tr++	↓ SAA/cr w/hematite		x	/65
145	---	↓													↓ SAA		x	/65
150	---	↓					Tr++		4						↓ SAA		x	/65
155	---	↓					Tr		Tr++						↓ SAA		x	/65
160	---	↓													↓ SAA		x	/65
165	---	↓													↓ SAA		x	/65
170	---	↓							5						↓ SAA		x	/65
175	---	↓	Exp	1											diorite fault? Contact		x	/50
180	---	↓					Tr								Amphibole		x	/50
185	xx	↓	Exp Reptile											Tr	diorite/fault?		x	/50
190	xx	↓													↓ SAA		x	/50
195	vv	↓	Exp												↓ 10% SAA 90% Volcanic		x	/50
200	vv	↓					.5							Tr	↓ Volcanic Calcareous Tuff or Greenstone Epi		x	/45

Hand lens CROWN RESOURCE

LOCATION: Dayton Camp

DRILL HOLE DC 11

Coords. _____ LITHOLOGY

ALTERATION (1-5)

Total Depth _____

N. _____ CLASTIC

CLAY

Collar Elev. _____

E. _____ LIMESTONE

SKARN

Angle _____

Date: 12-90 DIORITE

OXIDATION

Bearing _____

Collared _____ GRANODIORITE

BLEACHING

Logged by REN

Completed _____

^{magnese} garnet ^{zinc} ^{epidote}

Page 1 of 1

	LITH	ALT	COLOR	% Py	% Po	% AsPy	% Mag	% CuPy	% Cal Cite	% Qtzvn Chips	% Gnt	% Ept	COMMENTS	Poto Au	Ag	Byox att/ep
05	XX XX		dark greenish gray and brown						Tr++				Quartz diorite cr xllw	XX XX		20
10	XX XX												SAA	XX XX		20
15	XX XX												SAA	XX XX		20
20	XX XX												SAA	XX XX		25
25	XX XX												SAA	XX XX		35
30	XX XX												SAA	XX XX		40
35	XX XX												SAA	XX XX		35
40	XX XX			Tr					S				SAA / uneven calcite	XX XX		35
45	XX XX			Coarse									SAA? vuv?	XX XX		25
50	XX XX			Tr++									SAA	XX XX		30
55	XX XX						Tr		Tr+			Tr+	SAA	XX XX		40
60	XX XX												SAA	XX XX		50
65	XX XX												SAA	XX XX		50
70	VV VV												Pyrophyllite Andalusite? (volcanic)	VV VV		60
75	VV VV						Tr+						SAA	VV VV		55
80	VV VV												SAA	VV VV		65
85	VV VV												SAA	VV VV		50
90	XX XX											Tr+	Diortite granodiorite to diorite	XX XX		45
95	XX XX		dark greenish gray and black						Tr				Diortite	XX XX		60
100	XX XX												SAA	XX XX		60

CROWN RESOURCE

LOCATION: Dighton Camp

DRILL HOLE DZ 12

Coords. _____ LITHOLOGY

ALTERATION (1-5)

Total Depth _____

N. _____ CLASTIC

CLAY

Collar Elev. _____

E. _____ LIMESTONE

SKARN

Angle _____

Date: 12/90 DIORITE

OXIDATION

Bearing _____

Collared _____ GRANODIORITE

BLEACHING

Logged by REM

Completed _____

Magnetite/Garnet Zoned Epitaxial

Page 2 of 2

	LITH	ALT	COLOR	% Py	% Po	% AsPy	% Mag	% CuPy	% Cal Cite	% Qtzvn Chips	% Gnt	% Ept	COMMENTS	Au	Prob Ag	Pyrox/Amph other
105	<input checked="" type="checkbox"/>	<input checked="" type="checkbox"/>	wkly dark green to black	Tr					Tr				Volcanic/gneissstone / Amphibite?		<input checked="" type="checkbox"/>	<input checked="" type="checkbox"/>
110	<input checked="" type="checkbox"/>	<input checked="" type="checkbox"/>											↓ SAA texture is Andesitic		<input checked="" type="checkbox"/>	<input checked="" type="checkbox"/>
115	<input checked="" type="checkbox"/>	<input checked="" type="checkbox"/>													<input checked="" type="checkbox"/>	<input checked="" type="checkbox"/>
120	<input checked="" type="checkbox"/>	<input checked="" type="checkbox"/>													<input checked="" type="checkbox"/>	<input checked="" type="checkbox"/>
125	<input checked="" type="checkbox"/>	<input checked="" type="checkbox"/>													<input checked="" type="checkbox"/>	<input checked="" type="checkbox"/>
130	<input checked="" type="checkbox"/>	<input checked="" type="checkbox"/>													<input checked="" type="checkbox"/>	<input checked="" type="checkbox"/>
135	<input checked="" type="checkbox"/>	<input checked="" type="checkbox"/>		↓											<input checked="" type="checkbox"/>	<input checked="" type="checkbox"/>
140	<input checked="" type="checkbox"/>	<input checked="" type="checkbox"/>					Tr ⁺⁺								<input checked="" type="checkbox"/>	<input checked="" type="checkbox"/>
145	<input checked="" type="checkbox"/>	<input checked="" type="checkbox"/>		Tr			Tr		↓						<input checked="" type="checkbox"/>	<input checked="" type="checkbox"/>
150	<input checked="" type="checkbox"/>	<input checked="" type="checkbox"/>		Tr ⁺⁺					Tr ⁺⁺						<input checked="" type="checkbox"/>	<input checked="" type="checkbox"/>
155	<input checked="" type="checkbox"/>	<input checked="" type="checkbox"/>		↓											<input checked="" type="checkbox"/>	<input checked="" type="checkbox"/>
160	<input checked="" type="checkbox"/>	<input checked="" type="checkbox"/>		Tr											<input checked="" type="checkbox"/>	<input checked="" type="checkbox"/>
165	<input checked="" type="checkbox"/>	<input checked="" type="checkbox"/>													<input checked="" type="checkbox"/>	<input checked="" type="checkbox"/>
170	<input checked="" type="checkbox"/>	<input checked="" type="checkbox"/>													<input checked="" type="checkbox"/>	<input checked="" type="checkbox"/>
175	<input checked="" type="checkbox"/>	<input checked="" type="checkbox"/>													<input checked="" type="checkbox"/>	<input checked="" type="checkbox"/>
180	<input checked="" type="checkbox"/>	<input checked="" type="checkbox"/>		↓					↓	Tr			↓ + Feox		<input checked="" type="checkbox"/>	<input checked="" type="checkbox"/>
185	<input checked="" type="checkbox"/>	<input checked="" type="checkbox"/>	Antard 43% white orange grain	Tr ⁺⁺					Tr	50			↓ 30% Feox		<input checked="" type="checkbox"/>	<input checked="" type="checkbox"/>
190	<input checked="" type="checkbox"/>	<input checked="" type="checkbox"/>	dark green to black						Tr ⁺⁺				Volcanic / Amphibite?		<input checked="" type="checkbox"/>	<input checked="" type="checkbox"/>
195	<input checked="" type="checkbox"/>	<input checked="" type="checkbox"/>					Tr						↓ SAA		<input checked="" type="checkbox"/>	<input checked="" type="checkbox"/>
200	<input checked="" type="checkbox"/>	<input checked="" type="checkbox"/>					↓		↓				↓ SAA		<input checked="" type="checkbox"/>	<input checked="" type="checkbox"/>

CROWN RESOURCE

LOCATION: Dayton Camp DRILL HOLE DC 13

Coords. _____ LITHOLOGY ALTERATION (1-5) Total Depth _____

N. _____ CLASTIC (CY) CLAY Collar Elev. _____

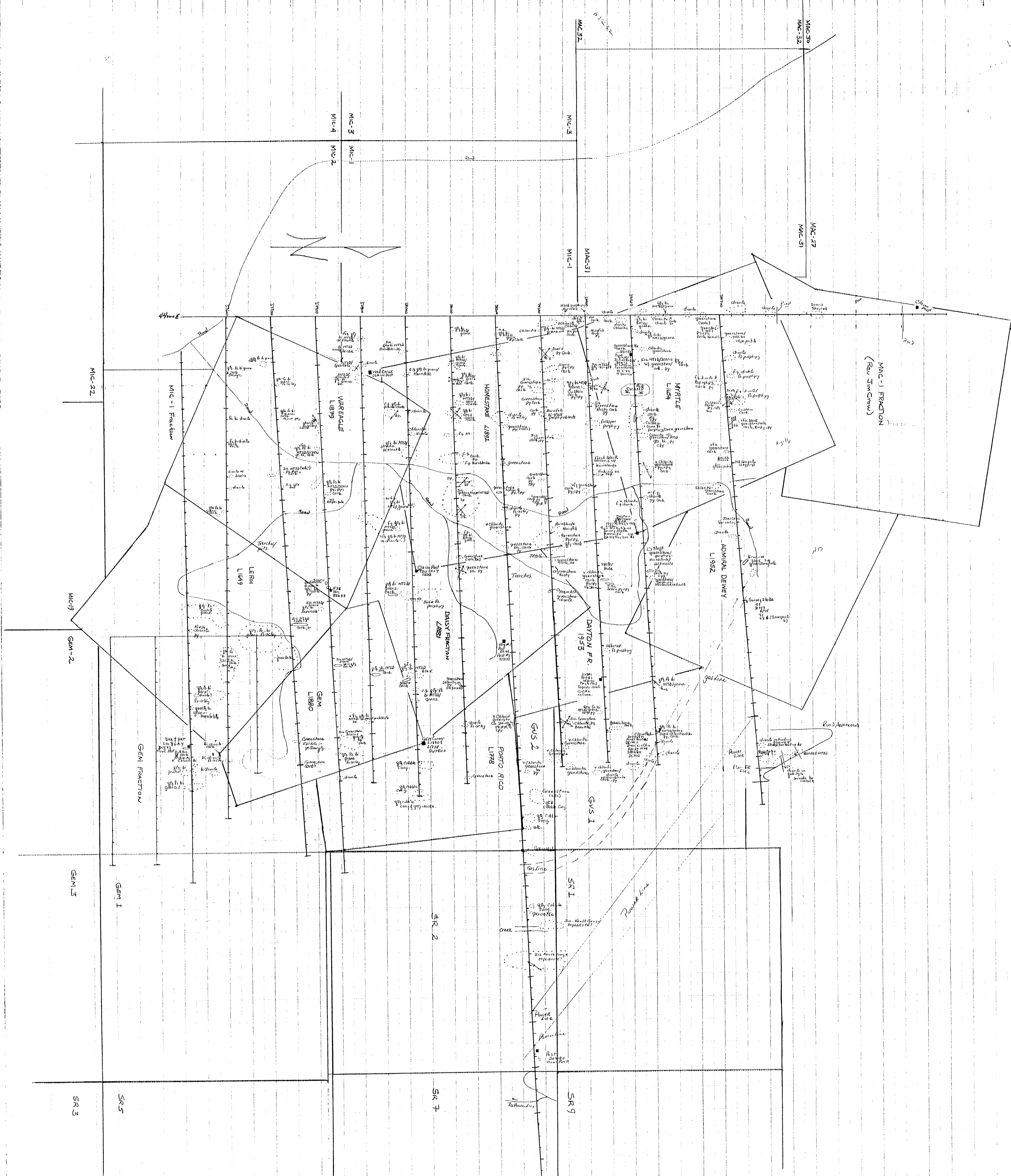
E. _____ LIMESTONE (SK) SKARN Angle _____

Date: 12-12-90 DIORITE (OX) OXIDATION Bearing _____

Collared _____ GRANODIORITE (BI) BLEACHING Logged by REM

Completed _____ magnetite ZnO Epitax Page 1 of 1

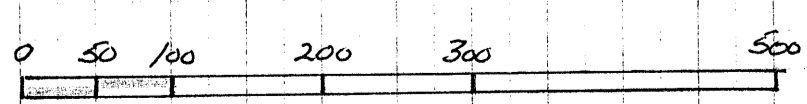
Depth	LITH	ALT	COLOR	% Py	% Po	% AsPy	% Mag	% CuPy	% Calc	% Qtz	% Zn	% Gnt	% Ept	COMMENTS	Au	Pb	Ag	Other	Assay
05	++ VV		dark greenish gray						Tr					Feldspar porphyry & Vol. Frags					30
10	VV VV													Volcanic greenstone?					60
15	VV VV			Tr															65
20	VV VV																		70
25	VV VV			Tr															60
30	VV VV																		60
35	VV VV			Tr										Box					55
40	VV VV			↓															65
45	VV VV			.5															70
50	VV VV		↓	↓								Tr							70
55	XX XX	bleached	mottled light gray and cream	Tr								2		Fr. X-line 9/3 clasts					20
60	XX XX			↓					↓			Tr		↓					30
65	XX XX								.5			1							20
70	XX XX											2							15
75	VV VV		dark green to black						↓					Volcanic greenstone					55
80	VV VV						Tr		3					↓ SAA					65
85	VV VV								Tr+					↓ SAA					65
90	VV VV			Tr										↓ SAA Andesitic SAA Test?					60
95	VV VV			↓					↓					↓ SAA					65
100	VV VV						↓		Tr++					↓ SAA					65



Dayton Camp
 Dayton Fracture Claim Group
 Geology and Claim Boundaries for The Dayton Camp + Area Claims

quartz - quartzite	■ - Claim Post	— Chain boundary
MFSO - metasediment	○ - Outcrop	
FS - quartz	□ - Trench/Flat	
Sil - Siliceous	↓ - Shoring	
Bi - Biotite	∩ - Jointing	
Py - Pyrite	∩ - Slickenside	
Ph - Phosphate	∩ - Relief bedding	
Ch - Chalcocite	— Road/Trail	
Ca - Carbonate		
Br - Breccia		
Vk - Volcanic		
Sx - Sulphide		
ca - Course		
med - medium		
v - Very fine grain		

Universal Transverse Mercator Grid
 Scale 1cm = 50m.
 Rem 10-27-90



GEOLOGICAL BRANCH
 ASSESSMENT REPORT

22,565

FIGURE 6

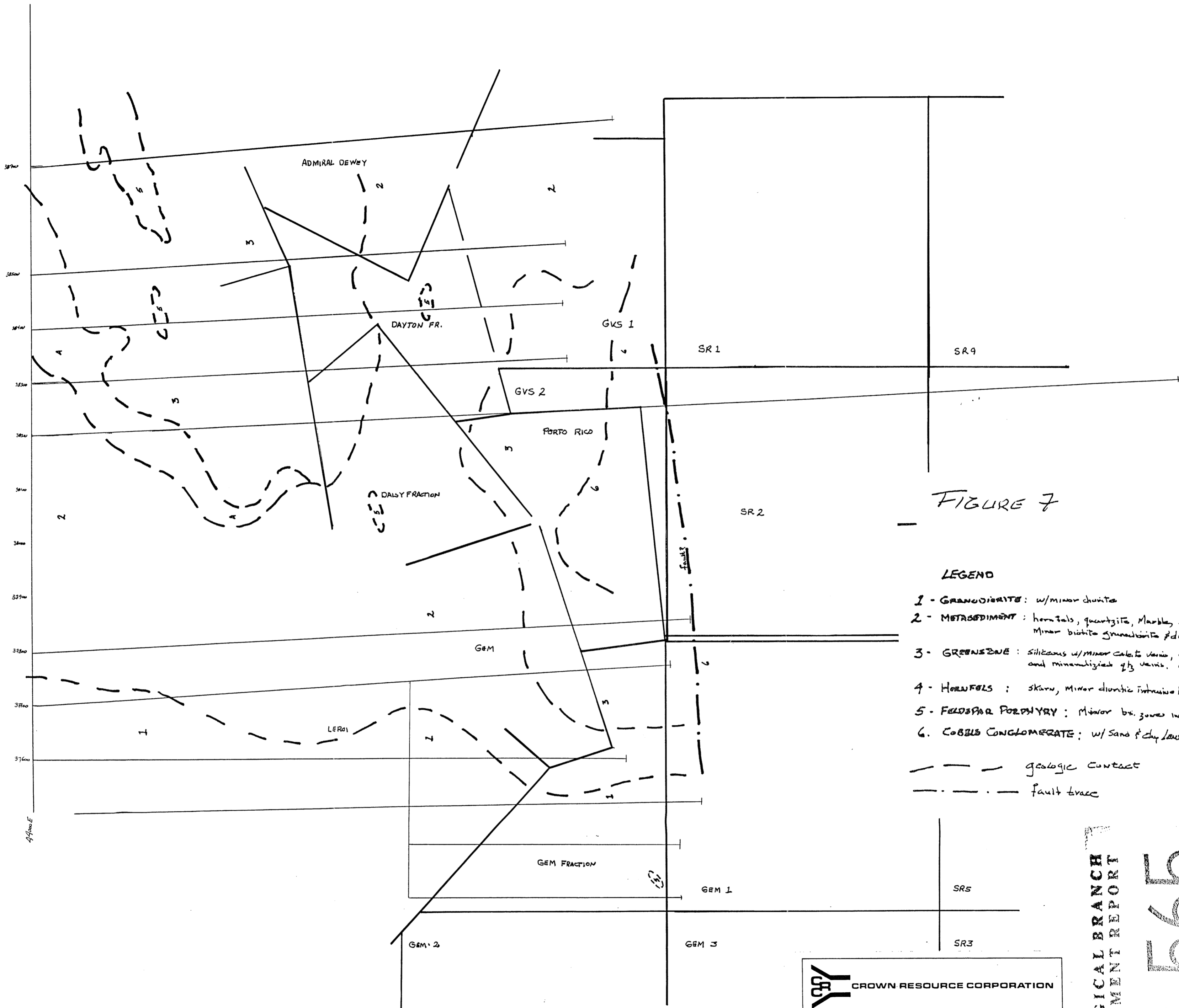


FIGURE 7

LEGEND

- 1 - GRANODIORITE: w/ minor diorite
 - 2 - METASEDIMENT: hornfels, quartzite, Marble, skarn
Minor biotite granulite & diorite
 - 3 - GREENSTONE: siliceous w/ minor calcite veins, disc. py, diorite
and mineralized g. veins. w/ tr. Fe-sulfate porphyry
 - 4 - HORNFELS: skarn, minor dioritic intrusive bodies.
 - 5 - FELDSPAR PORPHYRY: Minor bi. zones internal
 - 6 - COBBLE CONGLOMERATE: w/ sand & clay lenses
- — — geologic contact
 - - - - - fault trace

CROWN RESOURCE CORPORATION

COMPLETED	DATE	DRAFTED	DATE

DAYTON FRACTION CLAIM GROUP
 GENERAL GEOLOGY - 1990

DATE: _____ SCALE: 1:5000 DWG. NO. 7

GEOLOGICAL BRANCH
 ASSESSMENT REPORT
 22,565