

LOG NO:	MAR 01 1993	RD.
ACTION:		
FILE NO:		

ASSESSMENT REPORT
DIAMOND DRILLING

SUB-RECORDER
RECORDED
FEB 12 1993

HUCKLEBERRY PROPERTY
HUCK GROUP

OMENICA MINING DIVISION
BRITISH COLUMBIA
N.T.S. 93 E/11E

Latitude: 53 degrees 40.5 minutes N
Longitude: 127 degrees 10 minutes W

Work Performed: 10-11 September 1992

NEW CANAMIN RESOURCES LTD
620-171 W. ESPLANADE,
NORTH VANCOUVER, BC
V7M 3K9

GEOLOGICAL BRANCH
ASSESSMENT REPORT

22,793

Report By: B. Ainsworth, PEng BC, Project Geologist
11th February, 1993

Notice of Work Approval Number: SMI - 92 -0200094 - 222

TABLE OF CONTENTS

	PAGE
SUMMARY:	1
INTRODUCTION:	
PURPOSE	3
LOCATION AND ACCESS	3
PROPERTY	3
REGIONAL GEOLOGY	6
PROPERTY GEOLOGY	6
PREVIOUS WORK	6
DRILL PROGRAM	9
CONCLUSIONS AND RECOMMENDATIONS	10

APPENDIX I.	List of field personnel
APPENDIX II.	Statement of costs
APPENDIX III.	Statement of Qualifications
APPENDIX IV.	Drill Logs
APPENDIX V.	Copper Assays
APPENDIX VI.	ICP Analyses
APPENDIX VII.	References

LIST OF FIGURES

	PAGE
1. LOCATION MAP, 1:9,000,000	2
2. LOCATION MAP, 1:250,000	4
3. CLAIM MAP SHOWING HUCK GROUP, 1:50,000	5
4. DRILL SITE LOCATION MAP, 1:25,000	7
5. CROSS SECTION GRAPHIC ASSAY LOG, 1:1000	9
6. DRILL HOLE LOCATION MAP, 1:1000	in pocket

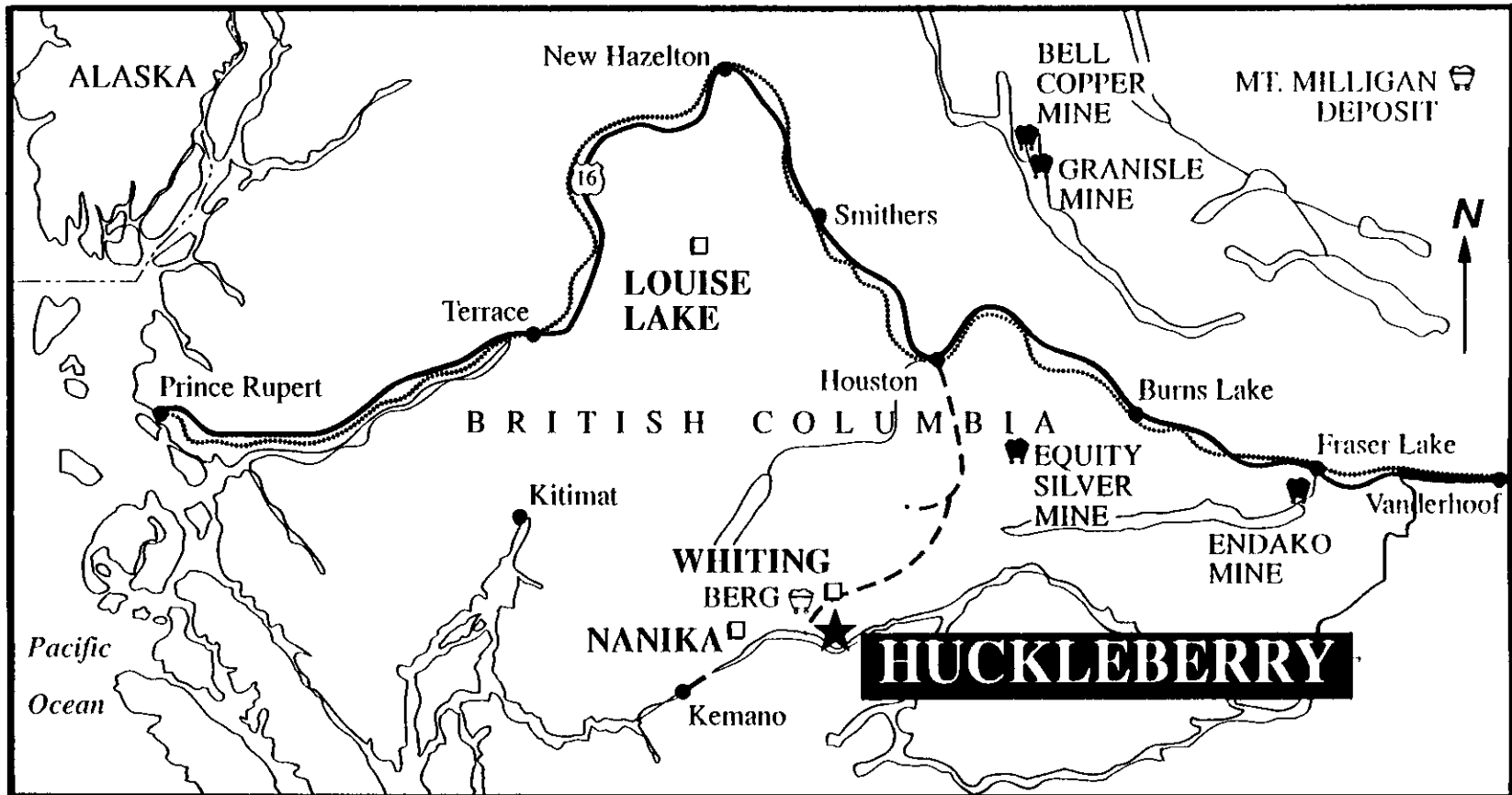
SUMMARY:

NEW CANAMIN RESOURCES LTD has been carrying out a diamond drill program on the Huckleberry mining property which is held under an option from Kennecott Canada Inc. (Kennco). The Huckleberry is a porphyry copper deposit located in central British Columbia that was discovered by Kennco in the early sixties and has been subject to exploration programmes carried out by Kennco, Granby and Noranda.

The deposit has a higher grade body of copper mineralization within the main porphyry deposit. The drilling has been undertaken to test this high grade body. This assessment report is filed on drill hole 92-11 only, in advance of a full report for the program that has extended from September 1992 to February 1993.

The uppermost 50 meters of core from this drill hole averaged 1.03% copper, confirming tonnage of higher grade that would be available early in the exploitation of the deposit.

Location Map



NEW CANAMIN RESOURCES LTD. Huckleberry Project, BC

100kms

B.A.
11 Feb 93

FIG. 1

INTRODUCTION:

PURPOSE

A diamond drill program has been undertaken to fill in sampling of a high grade portion of the Huckleberry porphyry copper deposit. Drilling has been carried out in an area partially tested by Kennco and Granby in the 60's and early 70's.

LOCATION AND ACCESS

The Huckleberry mining property is located in central British Columbia, approximately 80 kilometers SSW of Houston, BC. The claims extend northwards from the flooded valley of the Tahtsa River to Huckleberry Mountain. Elevations range from 1543 meters on the summit of Huckleberry Mountain to approximately 850 meters at the level of the Kemano Reservoir at Tahtsa Reach.

Access is by good all weather gravel logging roads from Houston on Highway 16. Radio communications are required for the safe transit of the active portions of the logging roads. Houston offers useful infrastructure for the project, with all basic supplies being available as well as a railway transfer point.

A sub-alpine tree population of spruce, balsam, and pine cover the central part of the claims, giving way to sparser vegetation at the higher levels of Huckleberry Mountain. The area timber is marginal for logging purposes but logging has reached to within 25 kms of the claims.

Most of the drainages on the property are intermittent and all flow into Tahtsa Reach. High levels of copper in stream sediments and waters were the basis for the work that led to the discovery of the deposit.

A campsite was established on the claims at the same location that had been used by previous operators.

PROPERTY

The Huckleberry property is comprised of the 97 claims listed in the table on the next two pages. The Huck group is comprised of the Do Over I, a 12 unit modified grid claim and two post claims, Len 4, Len 6, Len 17 - 20, Len 96.

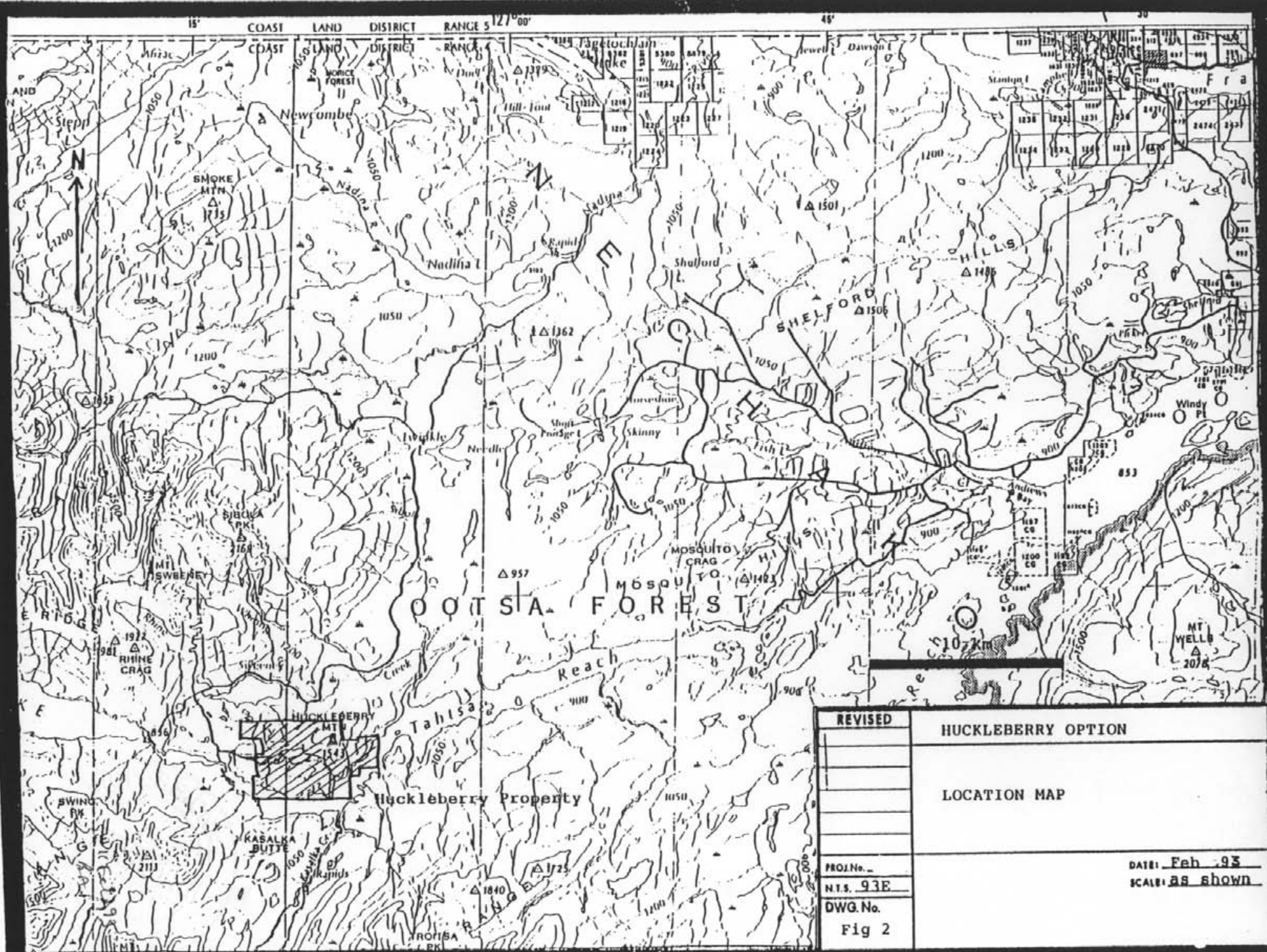
The two post claims were surveyed by McElhanney in 1973. The position of the claim posts for Len 19, Len 20, Len 18, and Len 17 indicated in the location map in the pocket has been measured from a black line print of the McElhanney survey of that date. The claim post was not located on the ground during the drill program.

TABLE 1: List of Claims
 Huckleberry Property
 N.T.S. 93 E/11E, Omineca Mining Division

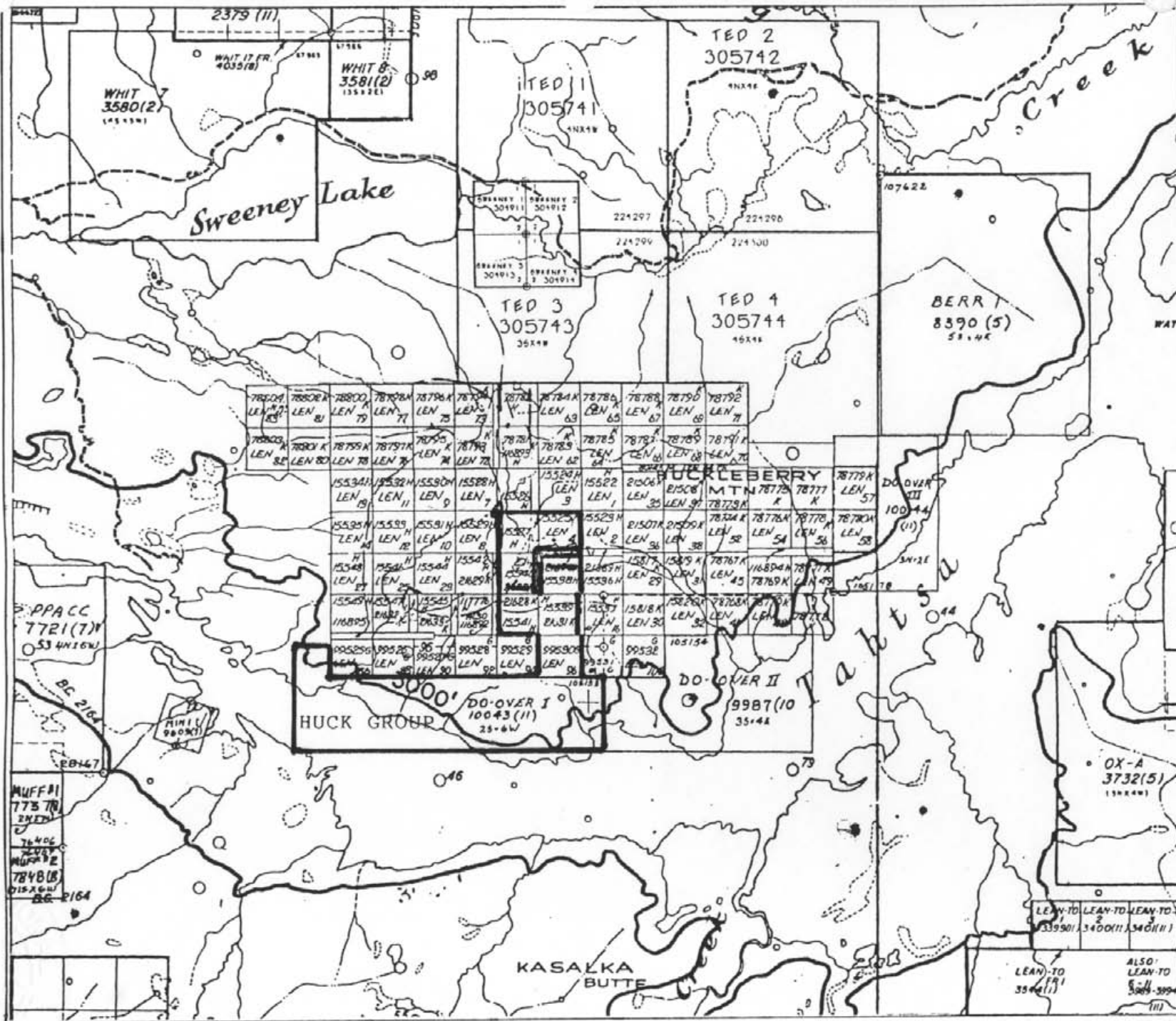
Claim Name	R/P Record	TY	LN	Rec Date	Owner	Record Year	Group Name	Group Date
BERRY 2	116893	FR	1	Oct 6	KENNCO	1972	LEN WEST	Jun 23 89
BERRY 3	116894	FR	1	Oct 6	KENNCO	1972	LEN EAST	Jun 23 89
BERRY 4	116895	FR	1	Oct 6	KENNCO	1972	LEN WEST	Jun 23 89
LEN 1	015522	TP	1	Jul 12	KENNCO	1962	LEN WEST	Jun 23 89
LEN 2	015523	TP	1	Jul 12	KENNCO	1962	LEN WEST	Jun 23 89
LEN 3	015524	TP	1	Jul 12	KENNCO	1962	LEN WEST	Jun 23 89
LEN 4	015525	TP	1	Jul 12	KENNCO	1962	LEN WEST	Jun 23 89
LEN 5	015526	TP	1	Jul 12	KENNCO	1962	LEN WEST	Jun 23 89
LEN 6	015527	TP	1	Jul 12	KENNCO	1962	LEN WEST	Jun 23 89
LEN 7	015528	TP	1	Jul 12	KENNCO	1962	LEN WEST	Jun 23 89
LEN 8	015529	TP	1	Jul 12	KENNCO	1962	LEN WEST	Jun 23 89
LEN 9	015530	TP	1	Jul 12	KENNCO	1962	LEN WEST	Jun 23 89
LEN 10	015531	TP	1	Jul 12	KENNCO	1962	LEN WEST	Jun 23 89
LEN 11	155532	TP	1	Jul 12	KENNCO	1962	LEN WEST	Jun 23 89
LEN 12	015533	TP	1	Jul 12	KENNCO	1962	LEN WEST	Jun 23 89
LEN 13	015534	TP	1	Jul 12	KENNCO	1962	LEN WEST	Jun 23 89
LEN 14	015535	TP	1	Jul 12	KENNCO	1962	LEN WEST	Jun 23 89
LEN 15	015536	TP	1	Jul 12	KENNCO	1962	LEN WEST	Jun 23 89
LEN 16	015537	TP	1	Jul 12	KENNCO	1962	LEN WEST	Jun 23 89
LEN 17	015538	TP	1	Jul 12	KENNCO	1962	LEN WEST	Jun 23 89
LEN 18	015539	TP	1	Jul 12	KENNCO	1962	LEN WEST	Jun 23 89
LEN 19	015540	TP	1	Jul 12	KENNCO	1962	LEN WEST	Jun 23 89
LEN 20	015541	TP	1	Jul 12	KENNCO	1962	LEN WEST	Jun 23 89
LEN 21	015542	TP	1	Jul 12	KENNCO	1962	LEN WEST	Jun 23 89
LEN 23	015544	TP	1	Jul 12	KENNCO	1962	LEN WEST	Jun 23 89
LEN 24	015545	TP	1	Jul 12	KENNCO	1962	LEN WEST	Jun 23 89
LEN 25	015546	TP	1	Jul 12	KENNCO	1962	LEN WEST	Jun 23 89
LEN 26	015547	TP	1	Jul 12	KENNCO	1962	LEN WEST	Jun 23 89
LEN 27	015548	TP	1	Jul 12	KENNCO	1962	LEN WEST	Jun 23 89
LEN 28	015549	TP	1	Jul 12	KENNCO	1962	LEN WEST	Jun 23 89
LEN 29	015817	TP	1	Aug 24	KENNCO	1962	LEN WEST	Jun 23 89
LEN 30	015818	TP	1	Aug 24	KENNCO	1962	LEN WEST	Jun 23 89
LEN 31	015819	TP	1	Aug 24	KENNCO	1962	LEN WEST	Jun 23 89
LEN 32	015820	TP	1	Aug 24	KENNCO	1962	LEN WEST	Jun 23 89
LEN 33	021389	FR	1	Jul 30	KENNCO	1963	LEN WEST	Jun 23 89
LEN 34	021390	FR	1	Jul 30	KENNCO	1963	LEN WEST	Jun 23 89
LEN 35	021506	TP	1	Aug 2	KENNCO	1963	LEN WEST	Jun 23 89
LEN 36	021507	TP	1	Aug 2	KENNCO	1963	LEN WEST	Jun 23 89
LEN 37	021508	TP	1	Aug 2	KENNCO	1963	LEN WEST	Jun 23 89
LEN 38	021509	TP	1	Aug 2	KENNCO	1963	LEN WEST	Jun 23 89
LEN 39	021628	FR	1	Aug 15	KENNCO	1963	LEN WEST	Jun 23 89
LEN 40	021629	FR	1	Aug 15	KENNCO	1963	LEN WEST	Jun 23 89
LEN 41	021630	FR	1	Aug 15	KENNCO	1963	LEN WEST	Jun 23 89
LEN 42	021631	FR	1	Aug 15	KENNCO	1963	LEN WEST	Jun 23 89
LEN 43	021632	FR	1	Aug 15	KENNCO	1963	LEN WEST	Jun 23 89
LEN 44	021633	FR	1	Aug 15	KENNCO	1963	SOUTH-EAST	Dec 21 72
LEN 45	078767	TP	1	Aug 18	KENNCO	1969	LEN WEST	Jun 23 89
LEN 46	078768	TP	1	Aug 18	KENNCO	1969	LEN WEST	Jun 23 89
LEN 47	078769	TP	1	Aug 18	KENNCO	1969	LEN EAST	Jun 23 89
LEN 48	078770	TP	1	Aug 18	KENNCO	1969	LEN EAST	Jun 23 89
LEN 49	078771	TP	1	Aug 18	KENNCO	1969	LEN EAST	Jun 23 89
LEN 50	078772	TP	1	Aug 18	KENNCO	1969	LEN EAST	Jun 23 89
LEN 51	078773	TP	1	Aug 18	KENNCO	1969	LEN WEST	Jun 23 89

TABLE 1: List of Claims (continued)
 Huckleberry Property
 N.T.S. 93 E/11E, Omineca Mining Division

Claim Name	R/P Record	TY	LN	Rec Date	Owner	Record Year	Group Name	Group Date
LEN 52	878774	TP	1	Aug 18	KENNICO	1969	LEN WEST	Jun 23 89
LEN 53	878775	TP	1	Aug 18	KENNICO	1969	LEN WEST	Jun 23 89
LEN 54	878776	TP	1	Aug 18	KENNICO	1969	LEN WEST	Jun 23 89
LEN 55	878777	TP	1	Aug 18	KENNICO	1969	LEN WEST	Jun 23 89
LEN 56	878778	TP	1	Aug 18	KENNICO	1969	LEN WEST	Jun 23 89
LEN 57	878779	TP	1	Aug 18	KENNICO	1969	LEN WEST	Jun 23 89
LEN 58	878780	TP	1	Aug 18	KENNICO	1969	LEN EAST	Jun 23 89
LEN 60	878781	TP	1	Aug 19	KENNICO	1969	LEN WEST	Jun 23 89
LEN 61	878782	TP	1	Aug 19	KENNICO	1969	LEN WEST	Jun 23 89
LEN 62	878783	TP	1	Aug 19	KENNICO	1969	LEN WEST	Jun 23 89
LEN 63	878784	TP	1	Aug 19	KENNICO	1969	LEN WEST	Jun 23 89
LEN 64	878785	TP	1	Aug 19	KENNICO	1969	LEN WEST	Jun 23 89
LEN 65	878786	TP	1	Aug 19	KENNICO	1969	LEN WEST	Jun 23 89
LEN 66	878787	TP	1	Aug 19	KENNICO	1969	LEN WEST	Jun 23 89
LEN 67	878788	TP	1	Aug 19	KENNICO	1969	LEN WEST	Jun 23 89
LEN 68	878789	TP	1	Aug 19	KENNICO	1969	LEN WEST	Jun 23 89
LEN 69	878790	TP	1	Aug 19	KENNICO	1969	LEN WEST	Jun 23 89
LEN 70	878791	TP	1	Aug 19	KENNICO	1969	LEN WEST	Jun 23 89
LEN 71	878792	TP	1	Aug 19	KENNICO	1969	LEN WEST	Jun 23 89
LEN 72	878793	TP	1	Aug 19	KENNICO	1969	LEN WEST	Jun 23 89
LEN 73	878794	TP	1	Aug 19	KENNICO	1969	LEN WEST	Jun 23 89
LEN 74	878795	TP	1	Aug 19	KENNICO	1969	LEN WEST	Jun 23 89
LEN 75	878796	TP	1	Aug 19	KENNICO	1969	LEN WEST	Jun 23 89
LEN 76	878797	TP	1	Aug 19	KENNICO	1969	LEN WEST	Jun 23 89
LEN 77	878798	TP	1	Aug 19	KENNICO	1969	LEN WEST	Jun 23 89
LEN 78	878799	TP	1	Aug 19	KENNICO	1969	LEN WEST	Jun 23 89
LEN 79	878800	TP	1	Aug 19	KENNICO	1969	LEN WEST	Jun 23 89
LEN 80	878801	TP	1	Aug 19	KENNICO	1969	LEN WEST	Jun 23 89
LEN 81	878802	TP	1	Aug 19	KENNICO	1969	LEN WEST	Jun 23 89
LEN 82	878803	TP	1	Aug 19	KENNICO	1969	LEN WEST	Jun 23 89
LEN 83	878804	TP	1	Aug 19	KENNICO	1969	LEN WEST	Jun 23 89
LEN 84	880145	FR	1	Sep 9	KENNICO	1969	LEN WEST	Jun 23 89
LEN 86	899525	TP	1	Jun 23	KENNICO	1971	LEN WEST	Jun 23 89
LEN 88	899526	TP	1	Jun 23	KENNICO	1971	LEN WEST	Jun 23 89
LEN 90	899527	TP	1	Jun 23	KENNICO	1971	LEN WEST	Jun 23 89
LEN 92	899528	TP	1	Jun 23	KENNICO	1971	LEN WEST	Jun 23 89
LEN 94	899529	TP	1	Jun 23	KENNICO	1971	LEN WEST	Jun 23 89
LEN 96	899530	TP	1	Jun 23	KENNICO	1971	LEN WEST	Jun 23 89
LEN 98	899531	TP	1	Jun 23	KENNICO	1971	LEN WEST	Jun 23 89
LEN 100	899532	TP	1	Jun 23	KENNICO	1971	LEN WEST	Jun 23 89
NEW LEN 22	117776	TP	1	Oct 24	KENNICO	1972	LEN WEST	Jun 23 89
DO OVER I	818843	MG	12	Nov 26	NOREX	1988	LEN WEST	Jun 23 89
DO OVER II	889987	MG	12	Oct 29	NOREX	1988	LEN EAST	Jun 23 89
DO OVER III	818844	MG	6	Nov 26	NOREX	1988	LEN EAST	Jun 23 89

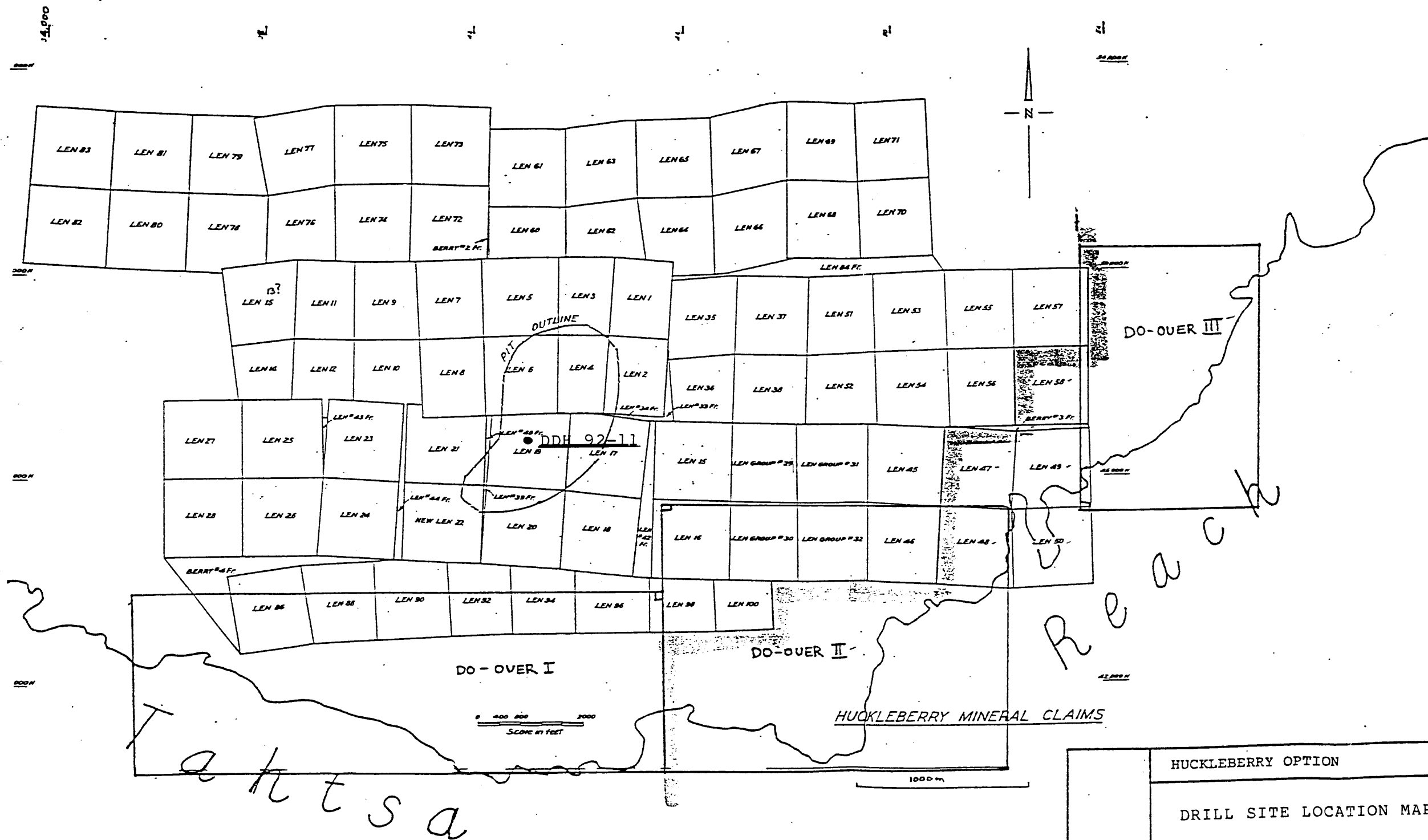


REVISED	HUCKLEBERRY OPTION
PROJ.No. N.T.S. 93E	DATE: Feb 93
DWG.No. Fig 2	SCALE: as shown



HUCK GROUP - HUCKLEBERRY PROJECT CLAIM MAP

SCALE: 1km



After Granby Mining Co. Ltd. (1974)

	HUCKLEBERRY OPTION
	DRILL SITE LOCATION MAP
	Feb 9 /93

93 E/11E
Fig 4

RA
11 Feb 93

GEOLOGY REGIONAL

The property lies on the west side of the Intermontane Belt within 30 kilometers of its flank against the Coast Crystalline Belt. The principal rocks in the area are volcanics and sediments of the Middle Jurassic Hazelton Group. The Hazelton Group rocks are intruded locally by the Bulkley intrusions, porphyritic quartz monzonites and granodiorites of Upper Cretaceous age. The area has been extensively glaciated and irregular tills and post glacial sediments cover much of the gentler terranes.

PROPERTY

Dark tuffs and porphyritic andesites of the Hazelton Group rocks cover most of the property. Mineralization is associated with an elliptical plug of granodiorite porphyry which is roughly 700 meters by 500 meters having a long axis oriented northeast. The mineralization is best developed in the aureole around the intrusive. A zone on the northeast side of the plug has been the focus of work to date and an open pit was proposed by Granby to exploit the better grades developed there. Extensive mineralization is recognized all around the intrusive and there is scope for locating larger tonnages than those classified in the reserve.

Chalcopyrite with minor pyrite is the typical make-up of sulfide mineralization in the area of the proposed pit. Minor molybdenite is noted throughout with some general increase in depth and/or in association with potash feldspar alteration occurring relatively deep in the system. The principal alteration types are chlorite, chlorite-biotite and biotite. Gypsum and anhydrite joint fillings, with variable calcite, dominate the mineralization of the pit area. At the subcrop, the joint fillings are often dissolved out, resulting in loose chips of rock that are difficult to recover with the diamond drill. Little or no oxide copper is observed in the subcrop material beneath the till sheet.

PREVIOUS WORK

Reconnaissance geochemistry (stream sediment and water sampling) was used to identify the area as a potential porphyry copper target in the late 50's. Kennco carried a staged program of exploration throughout the 60's and early 70's. This work included soils geochemistry, trenching, ground magnetic and induced polarization surveys and some 29 diamond drill holes. In 1972, the property was optioned to Granby. That company proceeded to drill 65 diamond drill holes and prepared a preliminary feasibility study based on the assay results and a program of metallurgical testing.

Granby identified a mineable open pit reserve of 86.5 million tonnes grading 0.40% copper, 0.01% molybdenum and some credits for gold and silver. A body of higher grade mineralization was noted by New Canamin Resources within the larger reserve and this has been the objective of the current drilling program.

THE DIAMOND DRILL PROGRAM

Drill hole #92-11 was completed during a program of approximately 10,000 meters of drilling in the area of a projected open pit as defined in a pre-feasibility study by Granby in 1973. J.T.Thomas of Smithers was the contractor for the drilling program, supplying camp, drill equipment and all support personnel for drilling and the camp operation. Ainsworth-Jenkins Holdings Inc supplied the personnel for sample handling, core logging and overall management of the project.

Drilling was performed with an Acker type unitized drill rig working two shifts in the 24 hour day. Drilling commenced on 10th September 1992 and was completed on 11th September 1992. NQ wireline core was recovered below the overburden from 23 meters (75 feet) below the collar.

Drill core was logged at the campsite for geotechnical and geological data after being photographed. It was observed that most of the mineralization is sited in fractures rather than as a dissemination throughout the rock cored; conventional core splitting can result in significant sampling errors with this type of mineralization. Whole core was sampled in order to minimize such sample errors.

The drill log for hole 92-11 is included in the appendix of this assessment report. The hole started in dark tuffs with strong chloritic alteration on fractures. At a depth of 42 meters (139 feet), a more porphyritic andesite unit was encountered, followed by a porphyritic diorite at 75 meters (250 feet). From 125 meters (412 feet) to the end of the hole at 129 meters (422 feet) the rock type reverted to an andesite porphyry.

Core samples were taken for each complete three meter (10 foot) interval and sent to MinEn Laboratories in Smithers for sample preparation. Pulps were forwarded to the MinEn laboratory in Vancouver, BC for copper assay and multi-element analysis. Copper assays were undertaken with a standard atomic absorption assay method. Each sample pulp was also analyzed for 12 elements by ICP spectroscopy and for gold by fire assay. The results are included in the Appendix of this report.

The average grade of the top 50 meters (165 feet) of core reported 1.03% copper. Gold and silver values were high enough that those metals would be expected to have a useful net smelter credit in concentrate produced from this mineralization. Arsenic, cadmium and lead showed very low values throughout the drill core.

A skeleton core was saved for geological reference purposes. Every 3 meters, or at changes in rock type if more frequent, a 4 to 6cm length of core was retained labeled and boxed. This core is stored at the warehouse of New Canamin Resources in Vancouver.

E+13200.00

N+14225.00

72-011

92-011

72-010

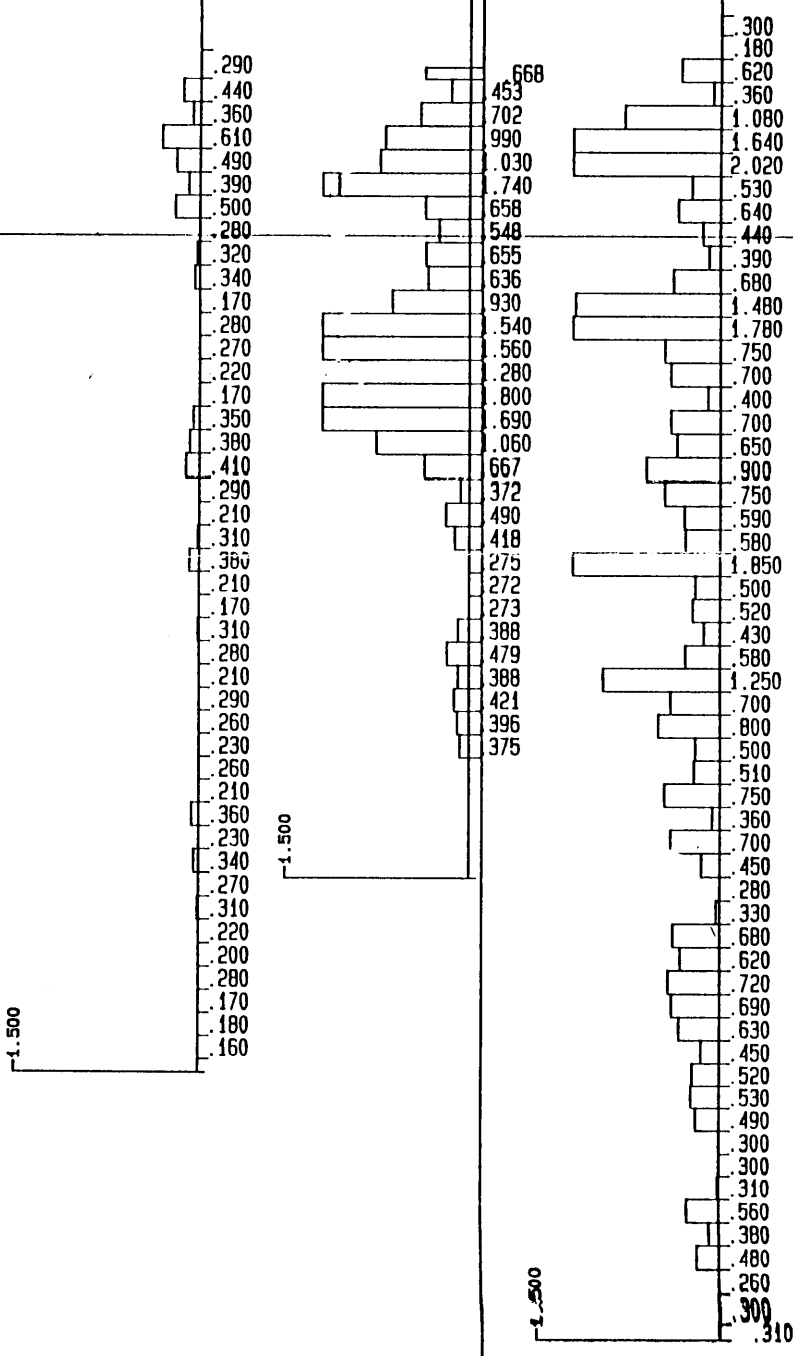
E+13200.00

N+14225.00

72-011

92-011

72-010



Huckleberry Project
 Section 14225N
 Looking North
 1.250....Copper %
 Scale: 1:1000

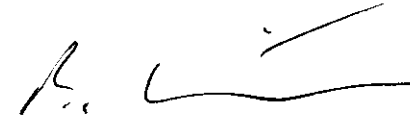
50 meters

FIG.5

H.A.
 11 Feb 93

CONCLUSIONS AND RECOMMENDATIONS:

Results from drill hole NC92-11 confirm continuity of the high grade mineralization in the immediate sector of the pit area around the hole. Further drilling is underway and a full analysis of the reserves will be made when that data is available.



B.Ainsworth, PEng BC

11th February 1993

APPENDIX I

LIST OF FIELD PERSONNEL

J.T.Thomas Contracting personnel

B.Ainsworth, Geologist

D.M.Jenkins, Geologist

A. Isaaks, Sampler

APPENDIX II

STATEMENT OF COSTS

Drill Hole 92-11, September 10-11/1992

Direct Drilling Costs

Overburden drilling	75 feet @ \$18/ft	\$1,350
NQ Core drilling	352 feet @ \$18/ft	\$6,336

Sample Preparation, Analysis and Assaying

30 samples @ \$15.52 each	\$ 456.60
---------------------------	-----------

Total	\$8151.60
-------	-----------

APPENDIX III

STATEMENT OF QUALIFICATIONS

I, Benjamin Ainsworth, residing in North Vancouver British Columbia, am registered as a Professional Engineer (Geological) in the Province of British Columbia.

I earned an Honours Degree in Geology at Oxford University in 1962 and qualified as M.A. (Oxon) in 1963.

I have practiced as a geologist continuously since 1962, working in Europe, Africa, North America, Australia and South America.

During my professional practice I worked for Placer Development Ltd (now Placer Dome Inc) for 24 years, obtaining an advanced level of post graduate training in mineral exploration and development through that company.

Since 1986, I have acted as a mining consultant, with commissions that have included industrial minerals market studies, base and precious metal property evaluations and exploration programs. Clients in this activity included major mining companies, federal and provincial government agencies and junior mining companies.

Signed at Vancouver this 11th day of February 1993,

Ben Ainsworth P.Eng. (BC)

APPENDIX IV

NEW CANAMIN RESOURCES LTD. - HUCKLEBERRY PROJECT
 HOLE NO. NC92-11
 DATE COLLARED 10 Sept92 BEARING 0° LATTITUDE 14225.02 NCG CORE SIZE NO. LOGGED BY D. Jenkins and B. Ainsworth
 DATE FINISHED 11 Sept92 LENGTH 422' DEPARTURE 13198.06 MCG REMARKS Acid test does not indicate deviation
 DIP -90° ELEVATION 1044.80M

DEPTH	JOINTS		HARD WEATHER.	ROCK DESCRIPTION APPEARANCE	STRUCTURE		MINERALIZATION DESCRIPTION	FT. BLK RQD ENVEL(RECOV) %	SAMP #
	ANGLE NO.	SURF. BREAK.			ANGLE	WIDTH			
	90	:	:	Overburden	:	:	:	:	:
	70	:	:		:	:	:	:	:
	50	:	:		:	:	:	:	:
	30	:	:		:	:	:	:	:
	0	:	:		:	:	:	:	:
10	90	:	:	:	:	:	:	:	:
	70	:	:	:	:	:	:	:	:
	50	:	:	:	:	:	:	:	:
	30	:	:	:	:	:	:	:	:
	0	:	:	:	:	:	:	:	:
20	90	:	:	:	:	:	:	:	:
	70	:	:	:	:	:	:	:	:
	50	:	:	:	:	:	:	:	:
	30	:	:	:	:	:	:	:	:
	0	:	:	:	:	:	:	:	:
30	90	:	:	:	:	:	:	:	:
	70	:	:	:	:	:	:	:	:
	50	:	:	:	:	:	:	:	:
	30	:	:	:	:	:	:	:	:
	0	:	:	:	:	:	:	:	:
40	90	:	:	:	:	:	:	:	:
	70	:	:	:	:	:	:	:	:
	50	:	:	:	:	:	:	:	:
	30	:	:	:	:	:	:	:	:
	0	:	:	:	:	:	:	:	:
50	90	:	:	:	:	:	:	:	:
	70	:	:	:	:	:	:	:	:
	50	:	:	:	:	:	:	:	:
	30	:	:	:	:	:	:	:	:
	0	:	:	:	:	:	:	:	:
60	90	:	:	:	:	:	:	:	:
	70	:	:	:	:	:	:	:	:
	50	:	:	:	:	:	:	:	:
	30	:	:	:	:	:	:	:	:
	0	:	:	:	:	:	:	:	:
70	90	:	:	:	:	:	:	:	:
	70	:	:	:	:	:	:	:	:
	50	:	:	:	:	:	:	:	:
	30	:	:	:	:	:	:	:	:
	0	:	:	:	:	:	:	:	:

NEW CANAMIN RESOURCES LTD. - HUCKLEBERRY PROJECT
 DATE COLLARED 10 Sept92 BEARING 0° LATITUDE 14225.02NCG CORE SIZE NQ LOGGED BY D. Jenkins and B. Ainsworth
 DATE FINISHED 11 Sept92 LENGTH 422' DEPARTURE 13198.06 NCG REMARKS Acid test does not indicate deviation
 DIP -90° ELEVATION 1044.80M

HOLE NO. NC92-11
 PAGE 2 OF 6

DEPTH	JOINTS			HARD WEATHER.			ROCK DESCRIPTION APPEARANCE	STRUCTURE		MINERALIZATION		FT. BLK RQD ENVEL (RECOV) %	SAMP #
	ANGLE	NO.	SURF. BREAK.	NESS				ANGLE CA	WIDTH HVN	DESCRIPTION			
	90						OVERBURDEN					0	
	70												
	50			6	R3	FR				Casing to 75'			15101
	30						Tuff			Cpy = 2.0%	(25%)		
	0												
80												80	15101
	90												15102
	70												
	50									Cpy = 0.9%			
	30									Mol = 0.01%			
	0												
90												90	15102
Chl	90						Tuff: Dk grey to blk, v.f.g,	various	<0.1"	10-20/f frags			15103
Gyps	70	4	1				chl alt on frags and as			w/gyp+calc+cpy	Chl	26	
Cpy	50	3	1	9	R3		irregular patches increasing			+qtz	qtz	(95%)	
Calc	30	2	1				in intensity to strong at 80'-			Cpy = 1.5%			
	0	1	4				90'			Patches strong			
										silic.			
100												100	15103
Gyp	90	1	1							Note trace Bornite			15104
Chl	70	5	2									65	
Calc	50			12	R2.5		strong magnetite 80'-90'	5°-20°	0.25"	Qtz+feld+cpy			
	30						Crowded andesite porphyry	various	<0.1"	5-10/ft micro		(99%)	
	0	1	1				95'-103' bleached strong feld.alt.			vns Qtz+cpy			
							near shear			Cpy = 0.6%			
110												110	15104
Gyp	90	1	3				Porphy-very altd by chl.	15°-20°	6"	Shear+cpy+Brx		55	15105
Cal	70	5	2				112'-117' less crowded and porphyry:			Cpy = 0.8%	Kspar		
	50	3	1	13	R3.5		much less altd by chl.						
	30									Joint coatings:			
	0									minor		(96%)	
120												120	15105
Gyp	90	5	2				Strong silicification 117'-138'			Cpy = 3.6%			15106
Calc	70	8	2							Moly = 0.15%	Silic	55	
	50			12	R5					Qtz+feld+calc	Feld:		
	30							5°	2+"	+cpy+moly			
	0	1	2				Joint coatings rare limonite					(97%)	
							Oxide on cpy						
130												130	15106
Gyp	90	8	2										15107
Calc	70	5	1							Cpy = 0.9%		60	
	50	1	2	13	R3.5					Moly = 0.05%			
	30	1	1									(100%)	
	0												
140							139' begin andesite porphyry					140	15107

HOLE NO. NC92-11
PAGE 3 OF 6

NEW CANAMIN RESOURCES LTD. - HUCKLEBERRY PROJECT

DATE COLLARED 10 Sept92 BEARING 0° LATTITUDE 14225.02 NCG CORE SIZE NQ LOGGED BY D. Jenkins and B. Ainsworth
DATE FINISHED 11 Sept92 LENGTH 422' DEPARTURE 13198.06 NCG REMARKS Acid test does not indicate deviation
DIP -90° ELEVATION 1044.80M

DEPTH	JOINTS ANGLE NO.	SURF. BREAK SURF. BREAK	HARD WEATHER. NESS	ROCK DESCRIPTION APPEARANCE	STRUCTURE ANGLE CA	MINERALIZATION WIDTHVN DESCRIPTION	FT. BLK RQD ENVEL(RECOV) %	SAMP #
Gyp	90 : 2 : 4	:	:	:	:	:	:	15108
Calc	70 : 3 : 2	:	:	:	:	Cpy = 1.1%	:	83
	50 : : : 14	:	R3	Strong chloritic alteration of biotite on fractures	:	Moly = 0.02%	:	
	30 : : : :	:	:	:	:	:	(100%)	
	0 : : : :	:	:	:	:	:	:	
150							150	15108
Gyp	90 : 1 : 3	:	:	:	:	:	:	92
Calc	70 : 3 : 1	:	:	:	:	Cpy = 1.4%	:	15109
	50 : 1 : 1	:	14	R3	:	Moly=0.05%	Magnetite	
	30 : : : :	:	:	:	:	qtz+mag+cpy	:	
	0 : : : :	:	:	:	:	calcite	(100%)	
160							160	15109
Gyp	90 : 5 : 2	:	:	:	:	Cpy = 1.6%	:	15110
Calc	70 : : : :	:	:	:	:	Strong disem.	:	84
	50 : : : 15	:	R3	:	:	Cpy few frags	:	
	30 : : : :	:	:	:	:	+ veins	(100%)	
	0 : : : :	:	:	:	:	:	:	
170					0°-20°	0.15"	170	15110
Gyp	90 : : : :	:	:	:	:	:	:	15111
Calc	70 : 8 : 1	:	:	Andesite Porph: bleaching + feld.	:	0.3"	Cpy = 1.1%	59
Epi/	50 : : : 14	:	R3.5	alteration and patchy chlorite	:	:	disem	
Chl	30 : : : :	:	:	alteration	:	:	:	(100%)
	0 : 1 : 1	:	:	:	:	:	:	
180							180	15111
Gyp	90 : 6 : 2	:	:	:	:	:	:	15112
Calc	70 : 3 : 2	:	:	:	:	Cpy = 0.9%	:	80
	50 : : : 14	:	R3.5	:	:	Brn = 0.05%	Bio	
Epi/	30 : : : :	:	:	:	:	:	:	(100%)
Chl	0 : : : :	:	:	:	:	:	:	
190							190	15112
Gyp	90 : 3 : 2	:	:	:	:	Cpy = 2.0%	:	15113
Calc	70 : 3 : 1	:	:	:	:	Qtz+cpy+mo+	Bio+mag	
	50 : 3 : 1	:	14	R3.5	:	mag	:	73
	30 : 1 : 1	:	:	Diorite+Andesite porphyry as	0°-20°	0.15"	:	(100%)
	0 : 1 : 1	:	:	above	:	0.3"	:	
200							200	15113
Cpy	90 : 3 : 3	:	:	:	:	:	:	15114
Gyp	70 : 2 : 3	:	:	:	:	Cpy = 1.9%	:	70
Calc	50 : 1 : 1	:	15	R3.5	:	Trace Brn	:	(100%)
	30 : 1 : 2	:	:	:	:	:	:	
	0 : : : :	:	:	:	:	:	:	
210							210	15114

HOLE NO. NC92-11
PAGE 4 OF 6

NEW CANAMIN RESOURCES LTD. - HUCKLEBERRY PROJECT

DATE COLLARED 10 Sept92 BEARING 0° LATTITUDE 14225.02NCG CORE SIZE NQ LOGGED BY D. Jenkins and B. Ainsworth
DATE FINISHED 11 Sept92 LENGTH 422' DEPARTURE 13198.06 NCG REMARKS Acid test does not indicate deviation
DIP -90° ELEVATION 1044.80M

DEPTH	JOINTS			HARD WEATHER.	ROCK DESCRIPTION APPEARANCE	STRUCTURE ANGLE CA	MINERALIZATION WIDTHVN DESCRIPTION	FT. BLK RQD ENVEL (RECOV) %	SAMP #	
	ANGLE	NO.	SURF. BREAK. NESS							
Calc	70	:	:	:	:	0°-20°	0.15"- 0.3"	Cpy = 2.1% Moly = 0.05%	93	15115
	50	:	:	15	R3.5				(100%)	
	30	:	:							
	0	:	:							
220									220	15115
Gyp	90	3	3							15116
Calc	70	2	2					Cpy = 2.4%		79
Cpy	50	2	1	15	R3.5			Moly = 0.05%		
	30	1	2						(100%)	
	0	:	:							
230									230	15116
Gyp	90	:	:							15117
Calc	70	4	2		Strong silicification and feldspar alteration at 240' then patchy silicification and feldspar flooding to 263'			Cpy = 1.5%		73
	50	6	2	13	R3.3			Moly = 0.1%		
	30	:	:						(100%)	
	0	:	:							
240									240	15117
Gyp	90	2	3							15118
Calc	70	5	2		Chlorite altered biotite pheno: crysts to 0.10" comprise 5% of: rock			Cpy = 1.0%		53
	50	:	:	13	R3.7			Moly = 0.03%		
	30	1	1			10°		Shear	(100%)	
	0	1	1		Contact indistinct			Carmin Red min small crush zone @ 245'		
250									250	15118
Gyp	90	5	2		250' - 260' gradual reduction silicification					15119
Cpy	70	2	1					Cpy = 0.5%		67
Calc	50	2	1	12	R3.5			Moly = 0.15%		
Chl	30	1	1		More biotite phenocrysts visible as are 0.25" feldspar phenocrysts: where rock altered near veins			Chl on fracs	(98%)	
	0	:	:					gyp sealed fracs		
260									256	15119
Gyp	90	3	2		Diorite at 250'				260	15120
Calc	70	2	2		Diorite porphyry: med.- lt. grey plagioclase phenos. on albite end: plag. to 0.25" in f.g. groundmass of biotite and felsic minerals	various	<0.1"	Cpy = 0.5%	(90%)	
	50	4	2	6	R3			Moly = 0.01%		
	30	4	1			5°		Thin films of: qtz + cpy	267	48
	0	:	:					264.5 chloritic gouge 2-3 inches	(80%)	10
270										15120
Gyp	90	4	3		Some quartz in groundmass			Cpy = 0.9%	273	15121
Calc	70	3	2			5°	1.0"	qtz+feld+gyp +		
Chl	50	2	1	8	R3			cpy (1vn)		
	30	1	3			40°	0.25"	qtz+feld+gyp+		10
	0	3	1					cpy+moly	(90%)	
280									280	15121

HOLE NO. NC92-11
PAGE 5 OF 6

NEW CANAMIN RESOURCES LTD. - HUCKLEBERRY PROJECT

DATE COLLARED 10 Sept92 BEARING 0° LATITUDE 14225.02 NCG CORE SIZE NQ LOGGED BY D. Jenkins and B. Ainsworth
 DATE FINISHED 11 Sept92 LENGTH 422' DEPARTURE 13198.06 NCG REMARKS Act test does not indicate deviation
 DIP -90° ELEVATION 1044.80M

DEPTH	JOINTS			HARD WEATHER.	ROCK DESCRIPTION	STRUCTURE	MINERALIZATION	FT. BLK RQD	SAMP #
	ANGLE	NO.	SURF. BREAK	NESS	APPEARANCE	ANGLE CA	WIDTH V N	ENVEL (RECOV) %	
Gyp	90	4	2				(1 vn)	16	15122
Calc	70	8	2		Biotite is altered to chlorite		Cpy = 0.4%	(90%)	
Chl	50	5	1	8	plagioclase is fresh but altered		Py = 0.2%		
	30	3	1		to soft white mineral or				10
	0	4	1		soft grn waxy mineral on			(90%)	
					fractures			287	
290									15122
Gyp	90	5	3			0°-30°	<0.25"	1-2 Qtz+feld+	(90%)
Calc	70	4	1					gyp+cpy+moly	292
Chl	50	3	1	8				vns/10 ft inter	40
	30	3	1					val 0.2% disem:	6
	0	2	1					Cpy w/Bio.	(80%)
								298	
300								Irregular broken	300
Gyp	90	5	1					(96%)	26
Calc	70	4	2						305
Chl	50	2	1	10					
	30	3	1					(96%)	
	0								
310									310
Gyp	90								
Calc	70	5	1						12
Chl	50	5	1	11					315
	30	3	1					(90%)	
	0								
320									15125
Gyp	90	2	1						322
Calc	70	7	1						
	50	4	2						12
	30	4	1						
	0								
330									330
	90				Diorite continues				15127
	70								
	50			2					0
	30							(90%)	
	0	5	1		Sheared diorite in fault zone				
340									340
	90								15127
	70				330' to 345' then sheared				0
	50							(80%)	
	30			2	andesite tuff to 355'				
	0								348
									+ crushed rock
350									15128

NEW CANAMIN RESOURCES LTD. - HUCKLEBERRY PROJECT
 DATE COLLARED 10 Sept92 BEARING 0° LATTITUDE 14225.02 NCG CORE SIZE NQ LOGGED BY D. Jenkins and B. Ainsworth
 DATE FINISHED 11 Sept92 LENGTH 422' DEPARTURE 13198.06 NCG REMARKS Act test does not indicate deviation
 DIP -90° ELEVATION 1044.80M

HOLE NO. NC92-11
 PAGE 6 OF 6

DEPTH	JOINTS			HARD WEATHER.	ROCK DESCRIPTION APPEARANCE	STRUCTURE		MINERALIZATION DESCRIPTION	FT. BLK RQD ENVEL (RECOV) %	SAMP #
	ANGLE	NO.	SURF. BREAK.			ANGLE	CA WIDTH			
	90	:	:	:	:	:	:	351 - 352.5 solid	:	15129
	70	:	:	:	:	:	:	352.5 crush zone +	28	
	50	:	2	R1	:	:	:	gouge	:	
	30	:	:	:	:	:	:	357 start of solid	:	
	0	:	:	:	:	:	:	rock	:	
360					Tuff: Dk grey to black vy f.g., felted chloritized biotite in groundmass				360	15129
Gyp	90	3	4	:	:	0°-25°	<0.15"	Cpy as thin Qtz+	58	15130
Calc	70	3	4	:	:	:	:	Cpy+gyp vns	K	363
	50	3	1	12	R3.5	various	:	+ films	spar	
	30	:	:	:	:	(films)	:	Cpy = 0.6%	:	
	0	:	:	:	:	:	:	:	:	
370									370	15130
	90	:	:	:	Diorite as above @ 370'	:	:	:	:	NO SAMPLE
	70	:	:	:	:	:	:	:	:	BELOW 370'
	50	:	:	:	:	:	:	:	:	
	30	:	:	:	:	:	:	:	:	
	0	:	:	:	:	:	:	:	:	
380										
	90	:	:	:	:	:	:	:	:	
	70	:	:	:	:	:	:	:	:	
	50	:	:	:	:	:	:	:	:	
	30	:	:	:	:	:	:	:	:	
	0	:	:	:	:	:	:	:	:	
390										
	90	:	:	:	:	:	:	:	:	
	70	:	:	:	:	:	:	:	:	
	50	:	:	:	:	:	:	:	:	
	30	:	:	:	:	:	:	:	:	
	0	:	:	:	:	:	:	:	:	
400										
	90	:	:	:	:	:	:	:	:	
	70	:	:	:	:	:	:	:	:	
	50	:	:	:	:	:	:	:	:	
	30	:	:	:	:	:	:	:	:	
	0	:	:	:	:	:	:	:	:	
410										
					Andesite porphyry @ 412 ft.					
420										
nc92-11a.dmj										:END OF HOLE TOTAL DEPTH 422 FEET

APPENDIX V



MIN-EN LABORATORIES
 (DIVISION OF ASSAYERS CORP.)

SPECIALISTS IN MINERAL ENVIRONMENTS
 CHEMISTS • ASSAYERS • ANALYSTS • GEOTECHNICALS

VANCOUVER OFFICE: P. 4
 705 WEST 18TH STREET
 NORTH VANCOUVER, B.C. CANADA V7M 1T2
 TELEPHONE (604) 980-8814 OR (604) 986-4524
 FAX (604) 980-9821

SMITHERS LAB.:
 3178 TATLOW ROAD
 SMITHERS, B.C. CANADA V0J 2N0
 TELEPHONE (604) 847-3004
 FAX (604) 847-3008

Assay Certificate

2S-0322-RA4

Company: **NEW CANAMIN RESOURCES LTD.**
 Project: **HUCKLEBERRY**
 Attn: **B. AINSWORTH/A. SAVAGE/D. JENKINS**

Date: **SEP-22-92**
 Copy 1. **NEW CANAMIN RESOURCES, N. VANCOUVER, B.C.**
 2. **AINSWORTH-JENKINS C/O MIN-EN SMITHERS**

We hereby certify the following Assay of **CORE** samples submitted SEP-15-92 by **DAVE JENKINS**.

Sample Number	Cu %	
15101 75-80	.668	DOH 92-11
15102 80	.453	
15103	.702	
15104	.990	
15105	1.030	1808 100 feet.
15106	1.740	
15107	.658	
15108	.548	
15109	.655	
15110	.636	1316 80 ft.
15111	.930	
15112	1.540	
15113 ✓	1.560	
15114	1.280	
15115	1.800	
15116	1.690	
15117	1.060	
15118	.667	
15119	.372	bore continues to 15130
15120	.490	379 120 feet.
15121	.418	
15122	.275	
15123	.272	
15124	.273	
15125	.388	
15126	.479	
15127	.388	
15128	.421	
15129	.396	
15130	.375	

Certified by _____

MIN-EN LABORATORIES

APPENDIX VI

COMP: NEW CANAMIN RESOURCES LTD.
 PROJ: HUCKLEBERRY
 ATTN: B.AINSWORTH/A.SAVAGE/D.JENKI

MIN-EN LABS — ICP REPORT
 705 WEST 15TH ST., NORTH VANCOUVER, B.C. V7M 1T2
 (604)980-5814 OR (604)988-4524

FILE NO: 25-0322-RJ3-4
 DATE: 92/09/23
 * CORE * (ACT1F31)

SAMPLE NUMBER	AG PPM	AS PPM	CD PPM	CO PPM	CU PPM	K %	MO PPM	NI PPM	PB PPM	TI PPM	ZN PPM	W AU-FIRE PPM
15101	.1	1	.1	21	3630	.63	1	1	1	3103	52	10
15102	.1	1	.1	19	3877	.39	7	1	2	3121	41	9
15103	.1	1	.1	19	6660	.67	71	1	1	2726	47	11
15104	.1	1	.1	19	8307	1.17	43	7	1	2777	50	7
15105	.7	1	.1	18	9738	1.08	101	17	2	2341	56	9
15106	4.6	1	.1	13	>10000	.44	57	7	13	1690	48	13
15107	1.3	1	.1	13	6111	.69	126	10	3	1768	44	9
15108	.1	1	.1	19	4803	.89	54	1	1	2979	47	9
15109	.1	1	.1	21	5599	1.42	94	8	1	3335	48	8
15110	.1	1	.1	18	5295	.48	47	1	1	2723	50	9
15111	.1	1	.1	20	7939	.55	71	1	3	2866	57	10
15112	2.5	1	.1	17	>10000	.63	100	7	16	2889	42	10
15113	1.7	1	.1	18	>10000	.77	102	7	6	2952	43	10
15114	1.9	1	.1	16	>10000	.53	111	6	9	2373	48	10
15115	1.7	1	.1	22	>10000	.82	664	5	10	2872	63	11
15116	1.5	1	.1	23	>10000	.67	238	2	9	2793	64	13
15117	3.9	1	.1	17	>10000	.63	296	1	4	2643	57	8
15118	.1	1	.1	17	6377	.74	280	1	1	2545	60	10
15119	.6	1	.1	9	3552	.16	749	12	5	741	45	10
15120	.8	1	.1	10	4854	.21	142	8	4	771	56	8
15121	1.1	1	.1	11	4122	.10	50	9	6	640	52	7
15122	.3	1	.1	10	2639	.08	38	5	1	1297	48	9
15123	.4	1	.1	11	2646	.16	102	9	2	1311	41	8
15124	.5	1	.1	11	2631	.24	317	5	1	1658	41	9
15125	.9	1	.1	13	3692	.26	310	7	1	1526	44	6
15126	1.5	1	.1	13	4609	.37	221	6	3	1212	45	10
15127	1.1	1	.1	8	3935	.14	136	8	1	221	30	5
15128	.2	1	.1	15	3757	.54	112	20	1	1462	42	7
15129	.1	1	.1	21	3386	1.49	76	22	1	3404	50	10
15130	.4	1	.1	16	3536	.81	112	11	1	2555	44	9

↑

92-11

92-11

92-11

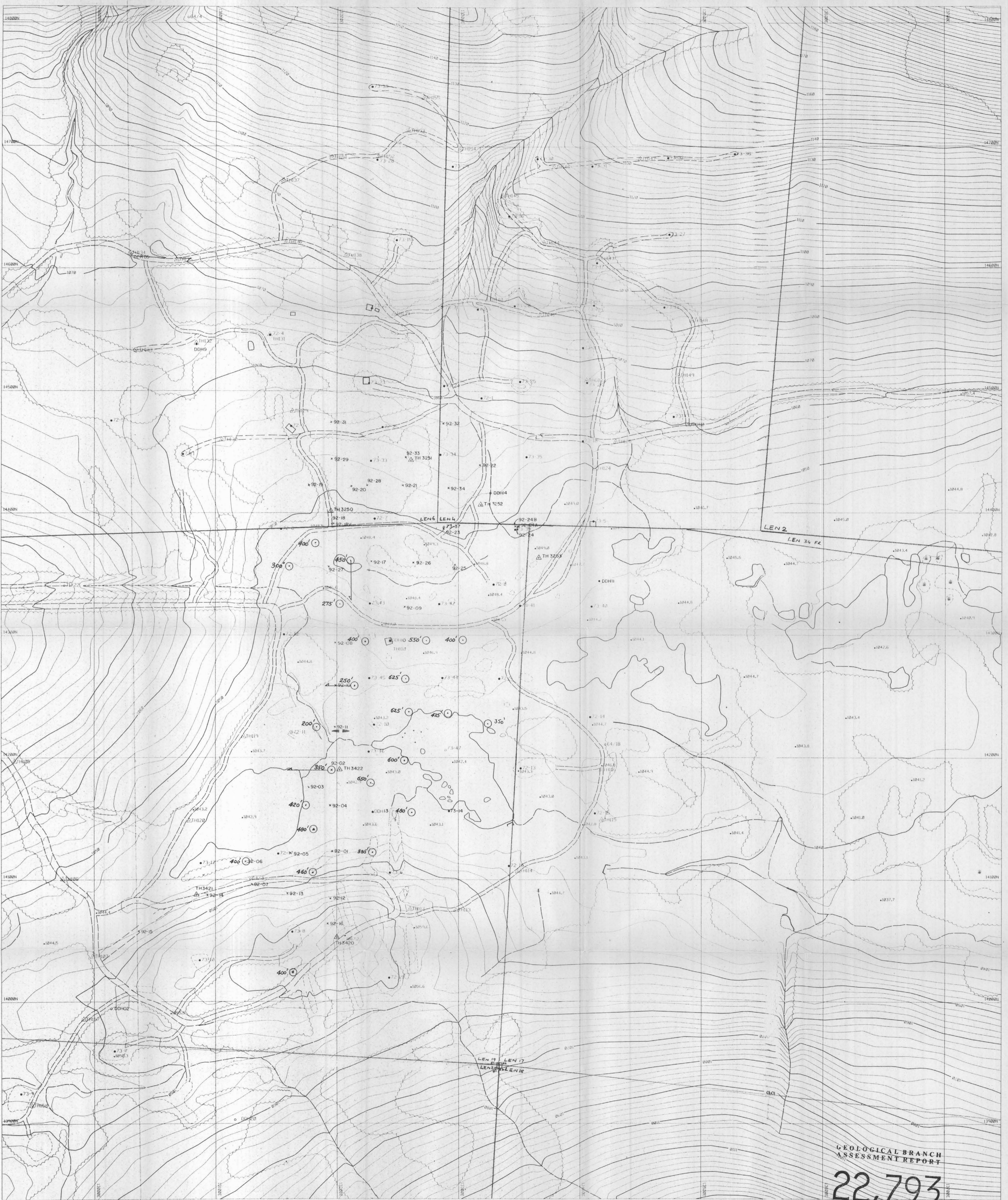
92-11

APPENDIX VII

REFERENCES

Assessment Reports - Huckleberry Property
Kennco 1963 - 1965
Noranda 1989

Carter, N.C. (1981) Bulletin 64 BCMEMPR, Porphyry and Molybdenum
Deposits West-Central British Columbia.

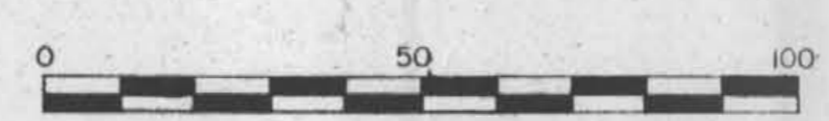


GEOLOGICAL BRANCH
ASSESSMENT REPORT

22,793

△ TRAVERSE POINT 1992
 x 92 DRILL HOLES ADDED
 o DRILL HOLE FROM EXISTING PLANS
 ○ 93 DRILL HOLES PROPOSED

REV #1 OCT 28/92
 x 92 DRILL HOLES ADDED
 ○ 93 DRILL HOLES PROPOSED



McElvanney Engineering Services Ltd.
 1360-88th Avenue, B.C. V3W 3K3 (604) 596-0391
 Compiled from 1:10,000 scale photography taken in 1973.
 MAP SCALE 1:1000
 DATE COMPLETED NOV 1992
 CONTOUR INTERVAL 2 meter
 SHEET NUMBER

NEW CANAMIN RESOURCES LTD.
 HUCKLEBERRY MTN.