

**GEOCHEMICAL AND GEOLOGICAL REPORT**  
**ON THE**  
**COREY PROPERTY**

**Skeena Mining Division, British Columbia**  
**NTS 104B/8W & 9W**  
**Latitude: 56 °27' N**  
**Longitude: 130 °25' W**



Prepared for  
**Ambergate Explorations Inc.**  
**Kenrich Mining Corp.**  
504 - 455 Granville Street,  
Vancouver, B.C.

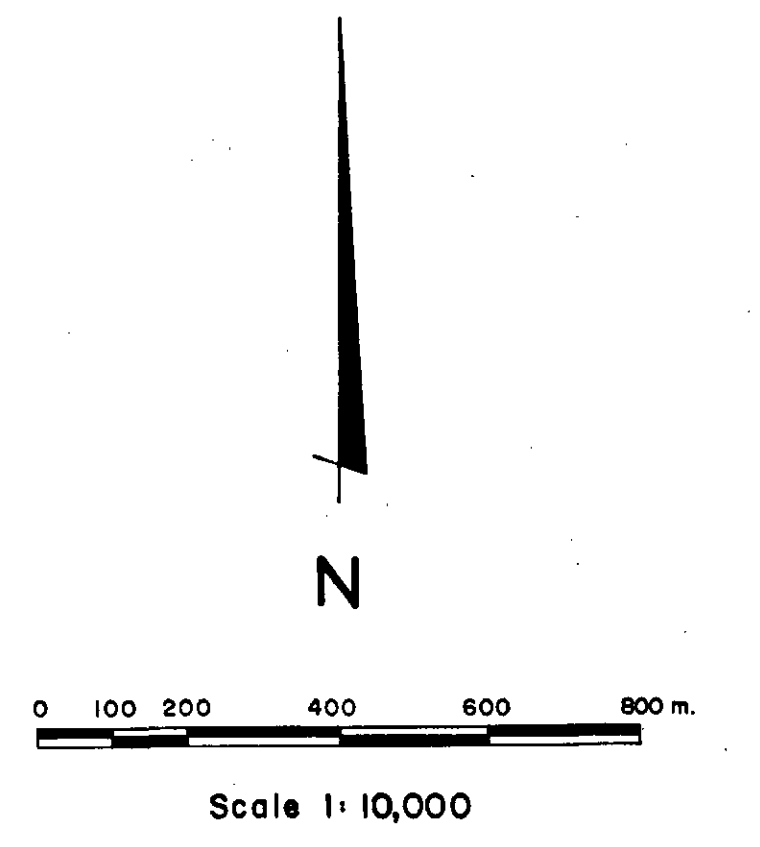
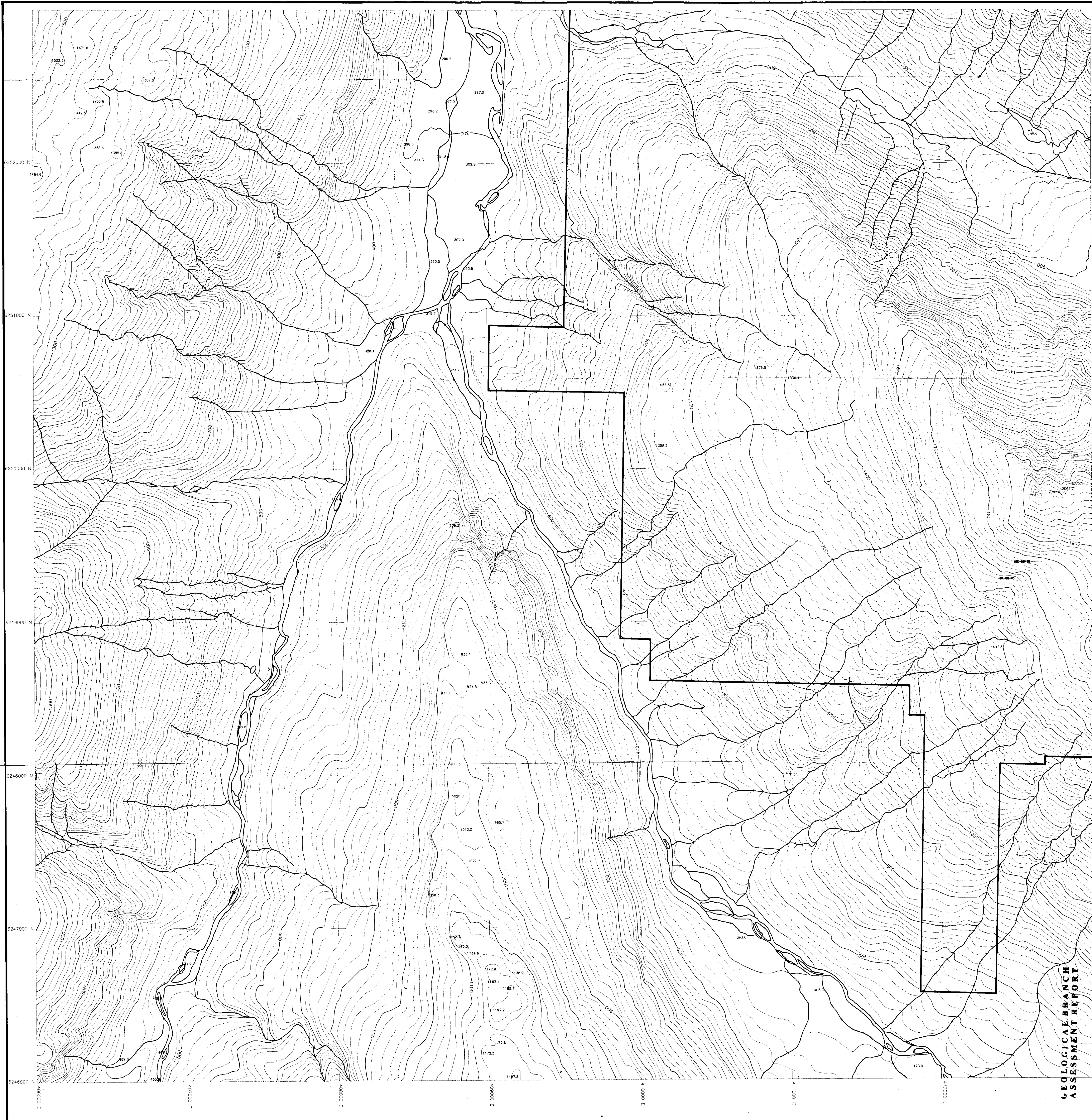
**GEOLOGICAL BRANCH**  
**ASSESSMENT REPORT**

Prepared by

**22,881**

**Rex Pegg, B.A.Sc., P.Eng.**  
Consulting Geologist  
#800 - 900 West Hastings Street,  
Vancouver, B.C.

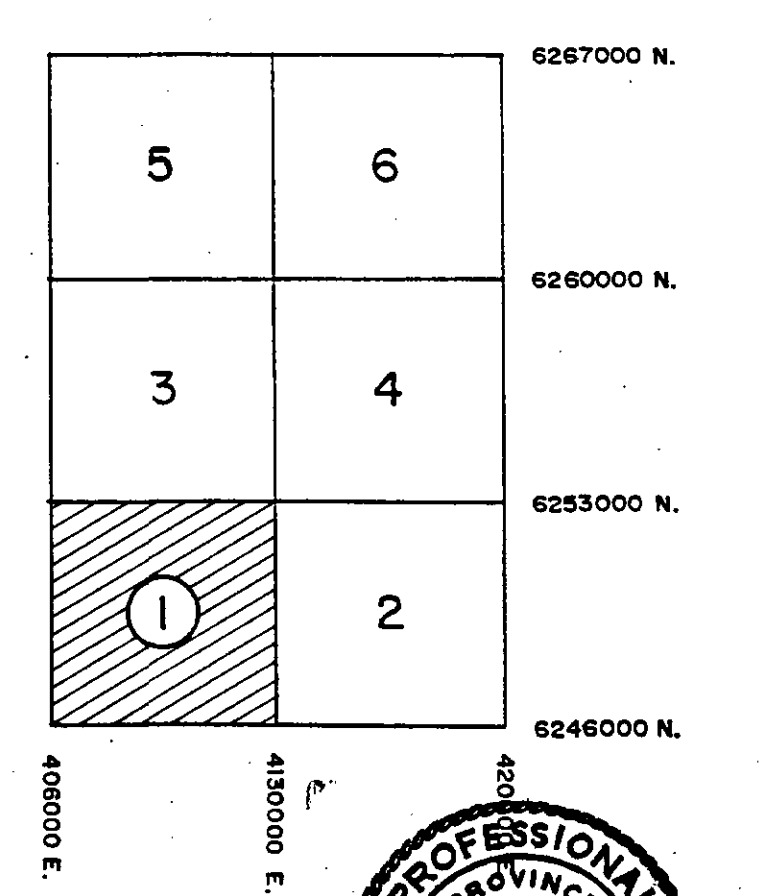
**PART 2 OF 2**



**EXPLANATION**

- + BK-88-45 Rock Sample Number
- Property Boundary

**INDEX MAP**



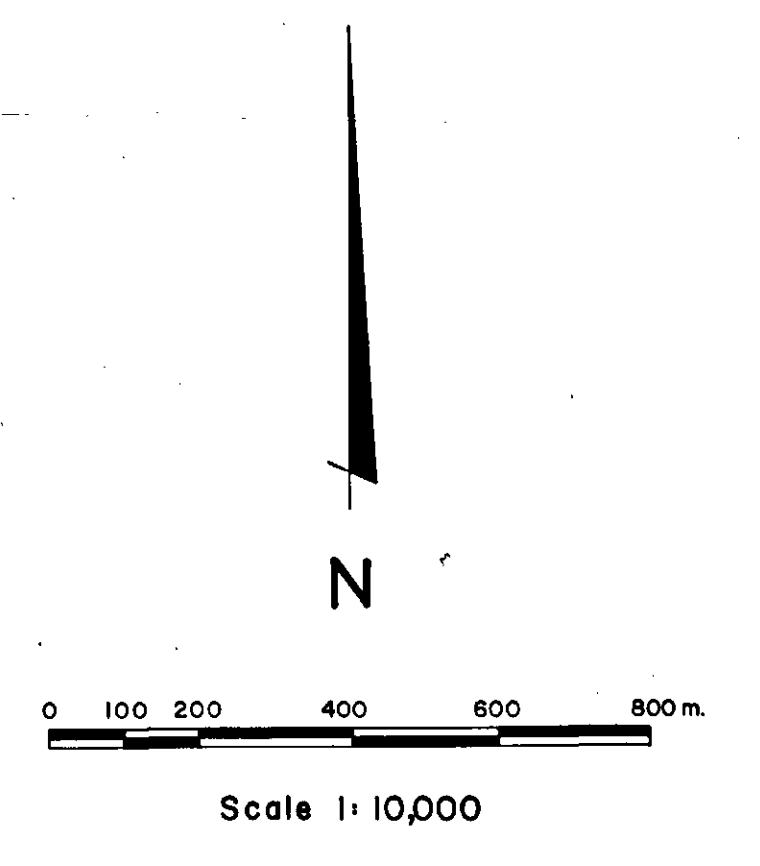
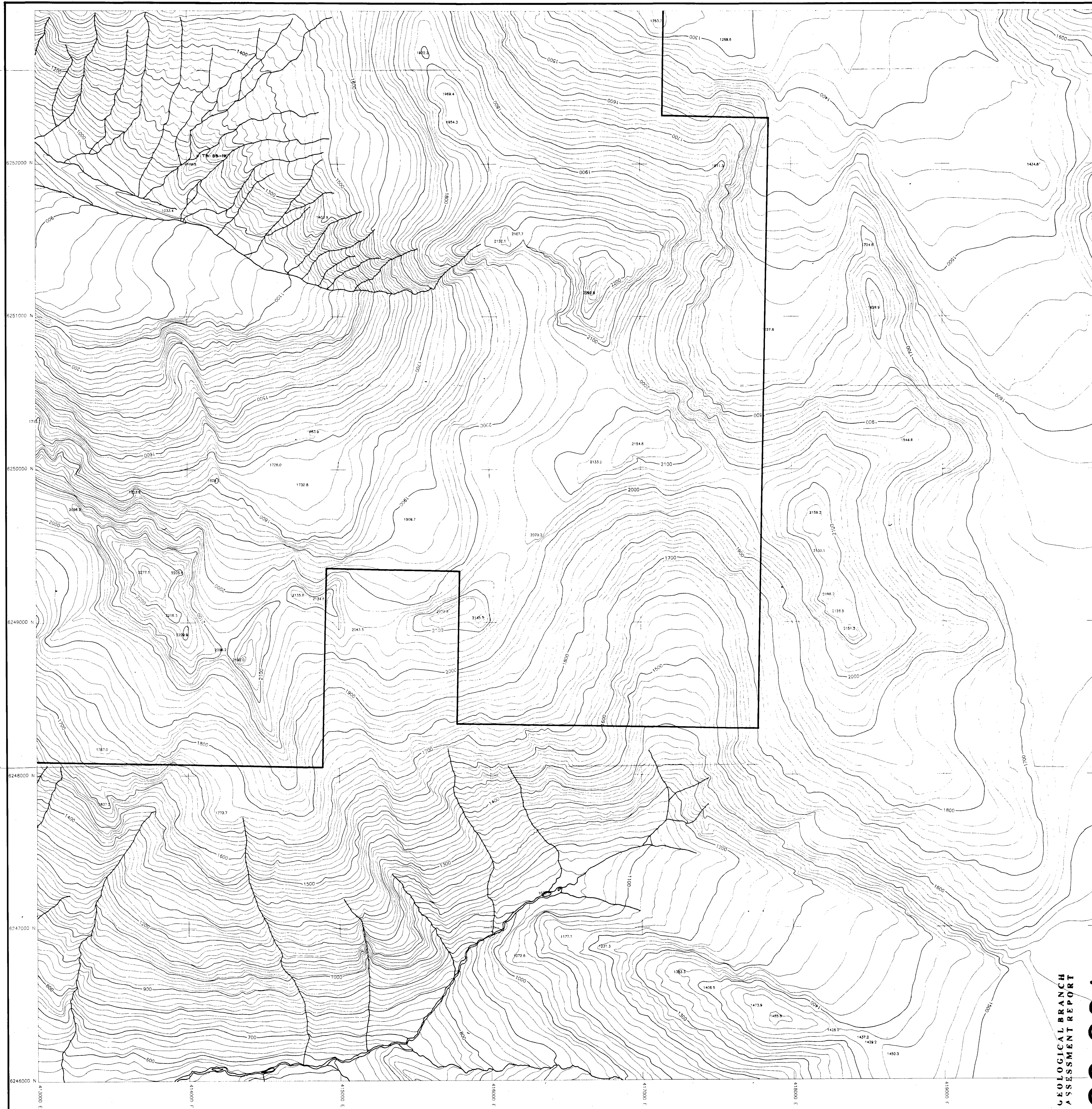
KENRICH MINING CORP.  
AMBERGATE EXPLORATIONS INC.

**COREY PROPERTY  
ROCK SAMPLE LOCATIONS**

DATE: April / 93      NTS: 1048/07s, 08s, 09s, 10s  
PROJECT: COREY      PROJ. GEOL.  
SCALE: 1:10,000  
MAP No. 7

GEOLOGICAL BRANCH  
ASSESSMENT REPORT

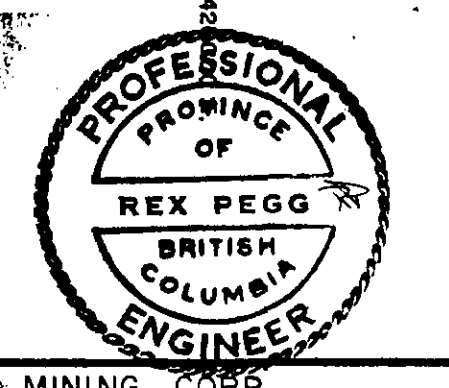
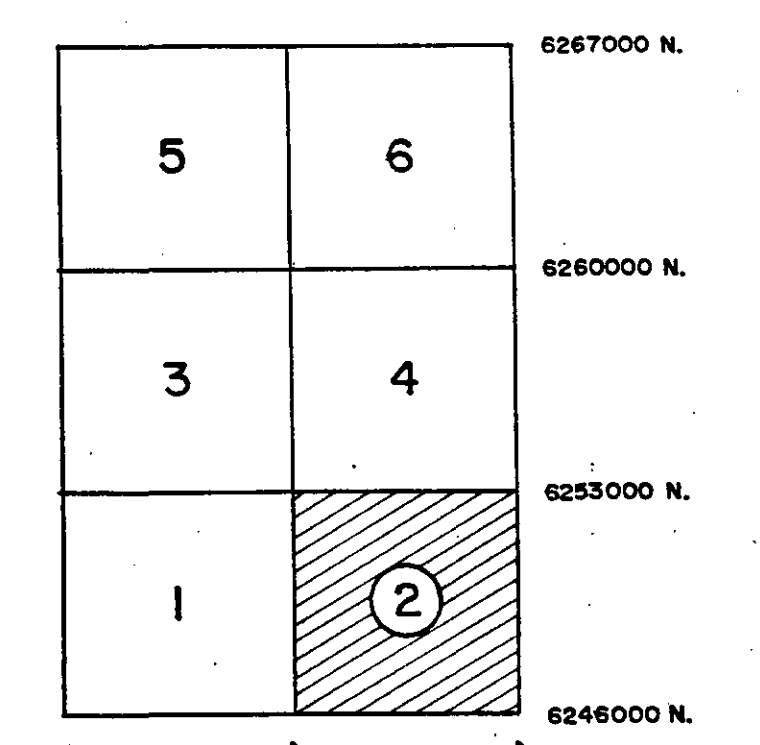
22,881 PART 2 of 2



**EXPLANATION**

- + TB-88-16      Rock Sample Number
- Property Boundary

**INDEX MAP**



KENRICH MINING CORP.  
AMBERGATE EXPLORATIONS INC.

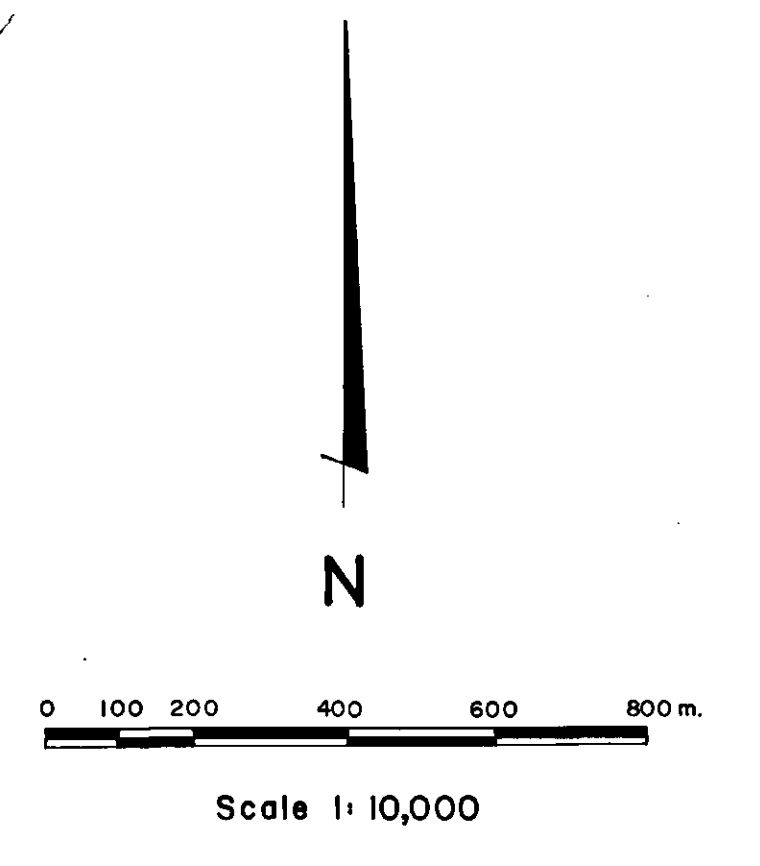
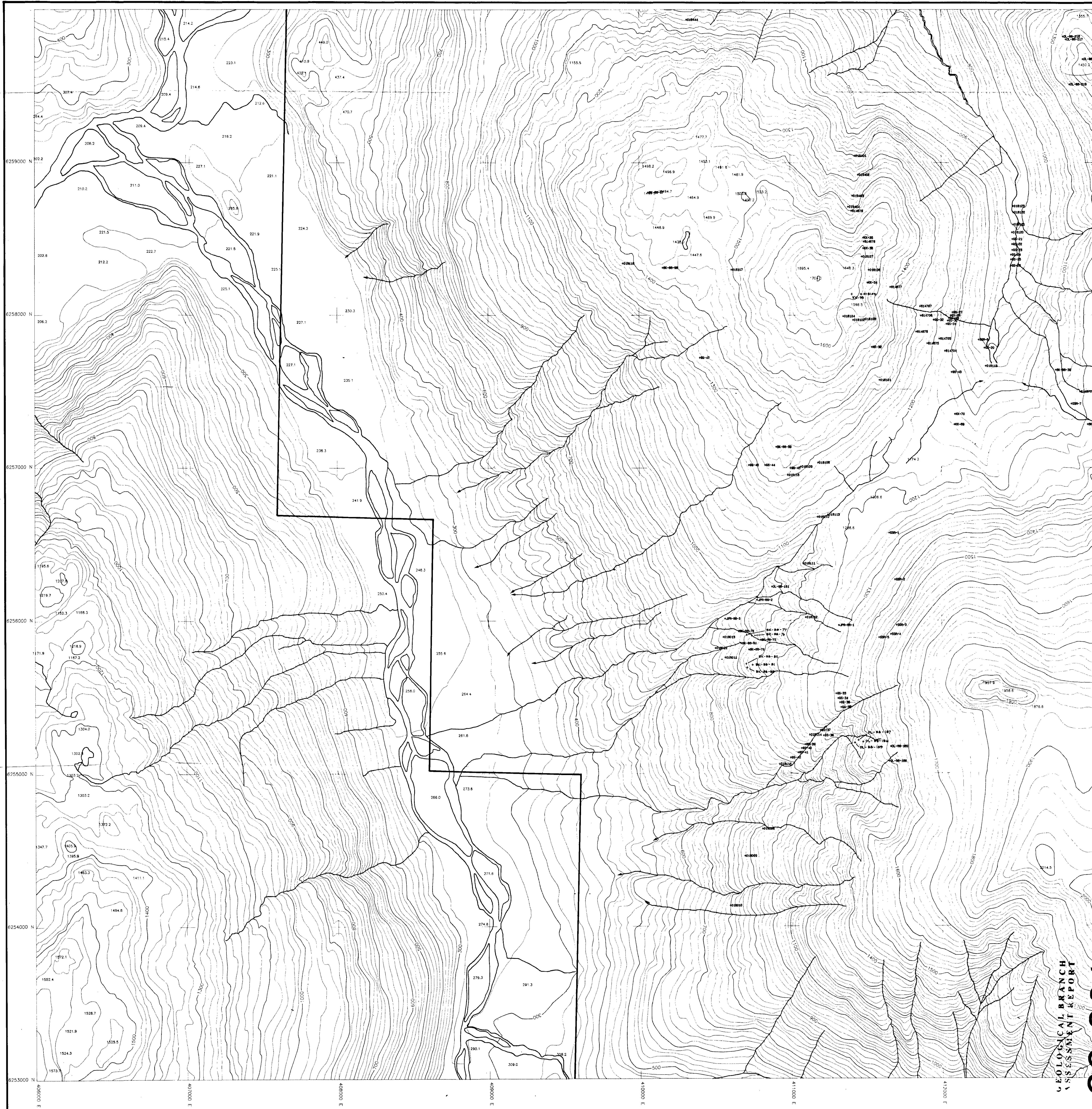
**COREY PROPERTY  
ROCK SAMPLE LOCATIONS**

DATE: April / 93      NTS: 1048/07a\_08a\_09a\_10a  
PROJECT: COREY      PROJ. GEDJ  
SCALE: 1:10000

MAP No. 8

GEOLOGICAL BRANCH  
ASSESSMENT REPORT

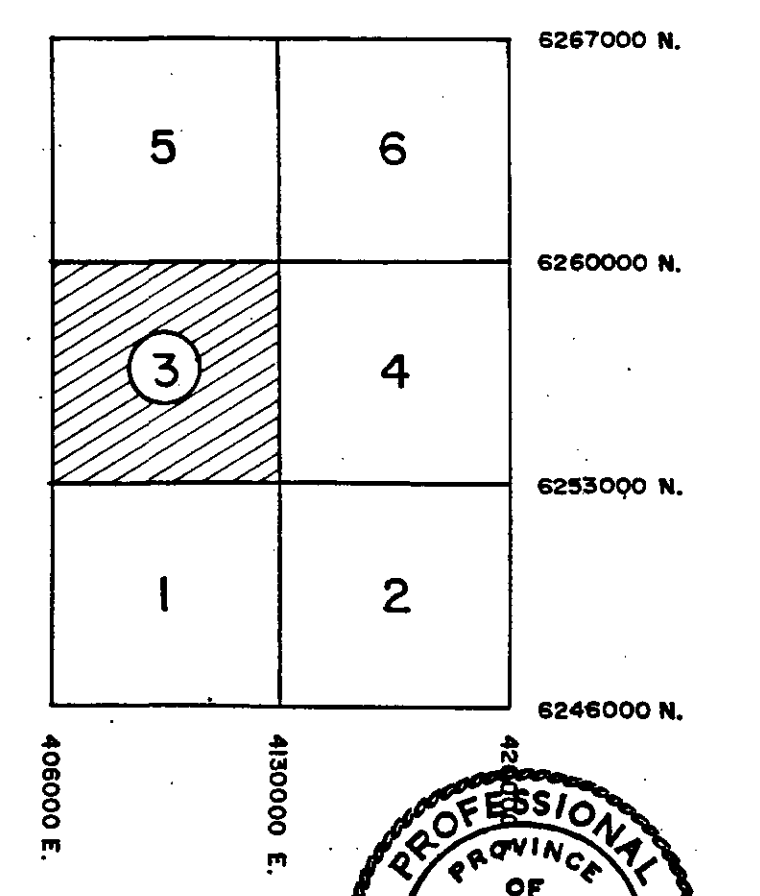
22,881 PART 2 OF 2



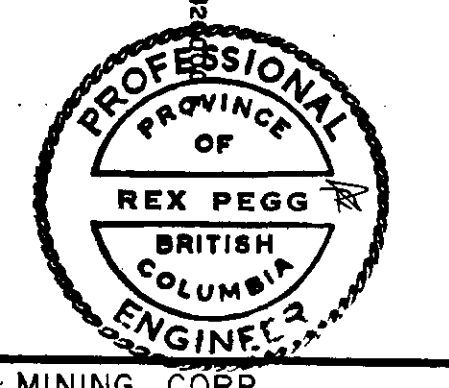
**EXPLANATION**

- + 018107 Rock Sample Number
- Property Boundary

**INDEX MAP**



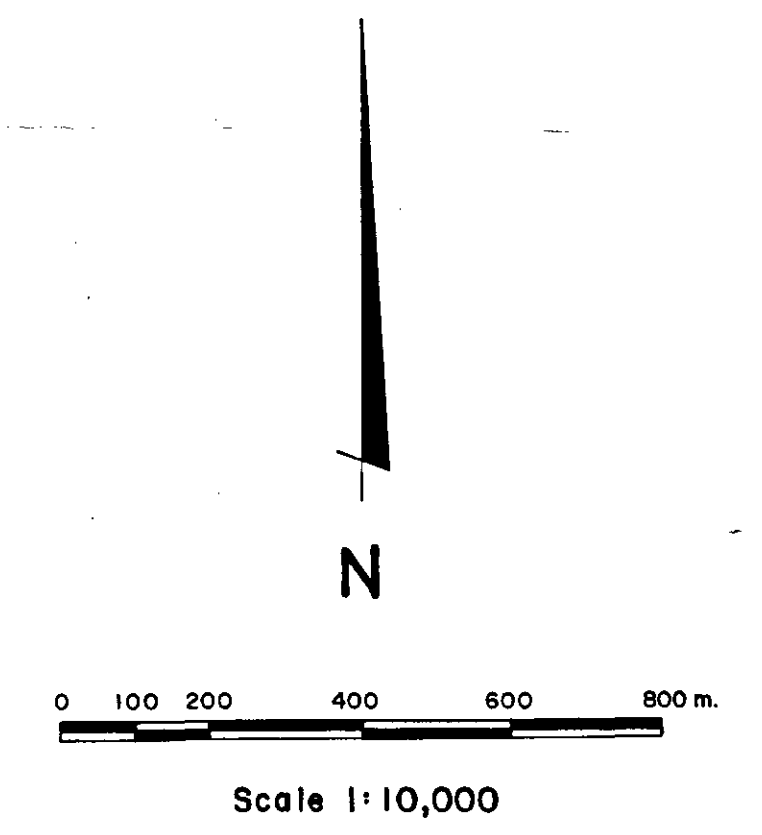
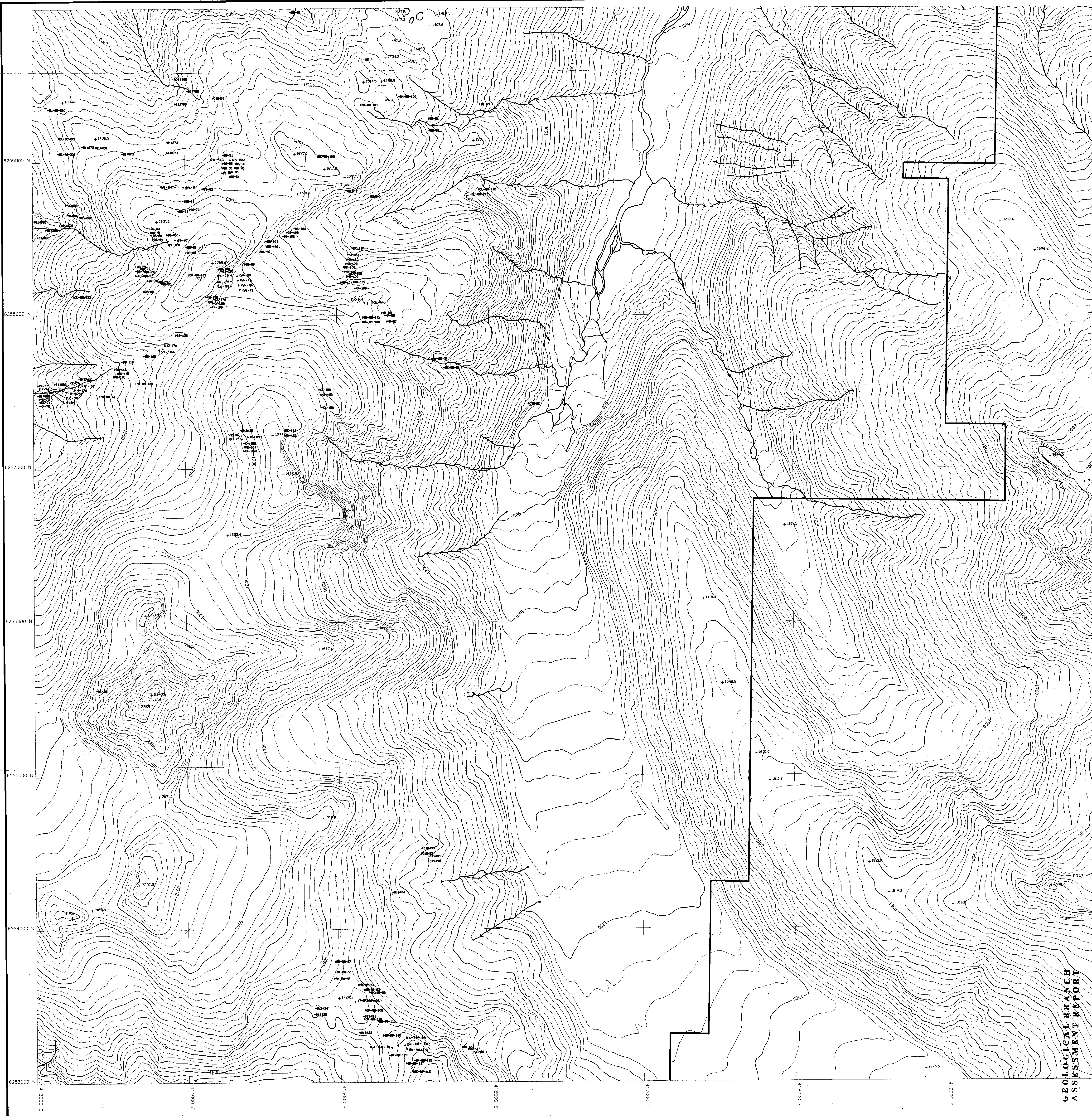
22,881  
 PART 2 OF 2  
 GEOLOGICAL BRANCH  
 ASSESSMENT REPORT



KENRICH MINING CORP.  
 AMBERGATE EXPLORATIONS INC.

**COREY PROPERTY  
 ROCK SAMPLE LOCATIONS**

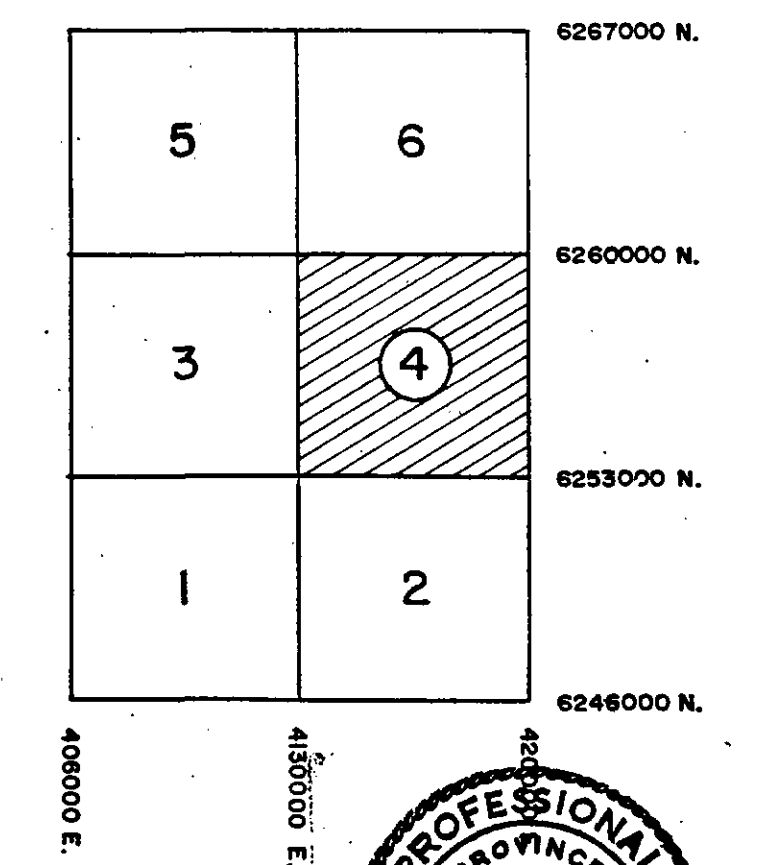
DATE: April / 93	NTS: 1048/07a, 08a, 09a, 10a
PROJECT: COREY	PROJ. GEOL.
SCALE: 1:10000	MAP No. 9



**EXPLANATION**

- + BK-88-95      Rock Sample Number
- Property Boundary

**INDEX MAP**



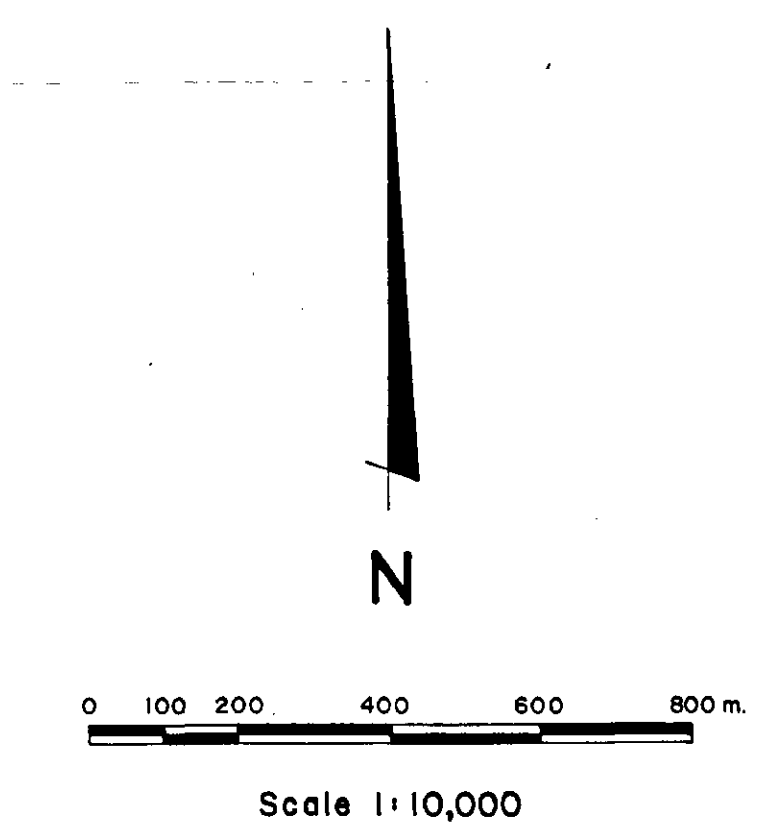
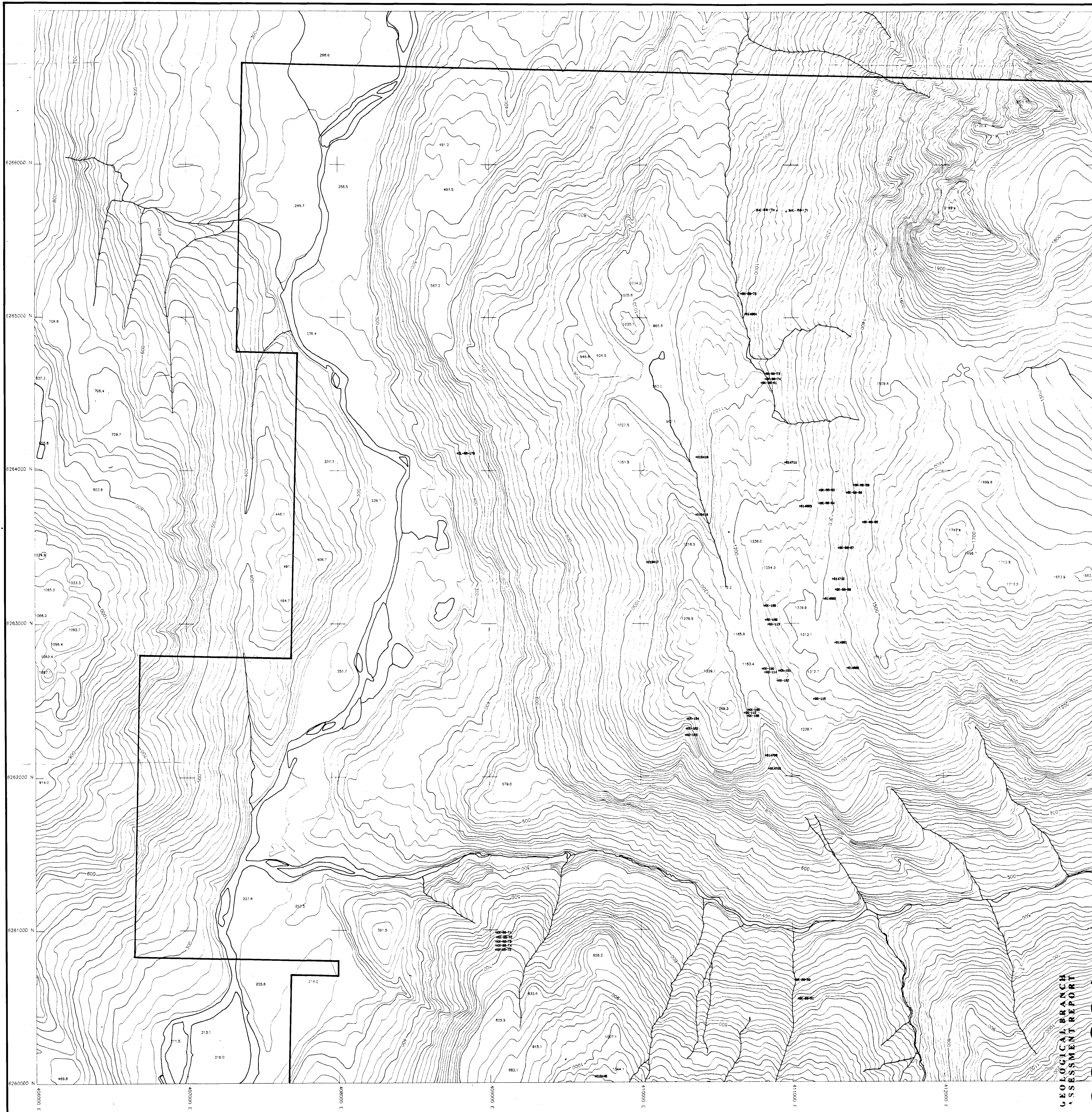
KENRICHE MINING CORP.  
AMBERGATE EXPLORATIONS INC.

**COREY PROPERTY  
ROCK SAMPLE LOCATIONS**

DATE: April / 93	NTS: 1048/078_08w_09a_10w
PROJECT: COREY	PROJ. GEOL.
SCALE: 1:10000	MAP No. 10

22,881 PART 2 OF 2

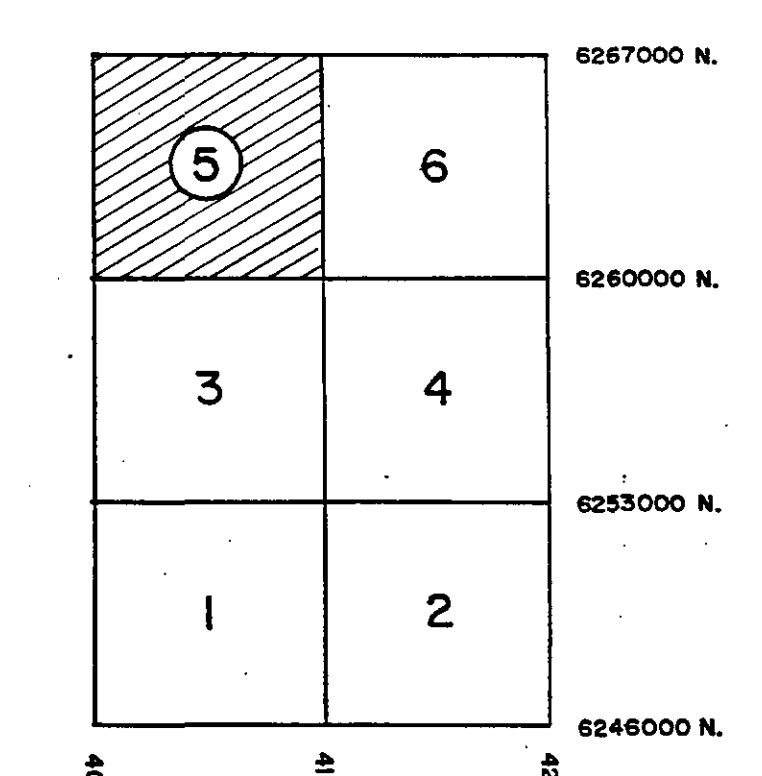
GEOLOGICAL BRANCH  
ASSESSMENT REPORT



**EXPLANATION**

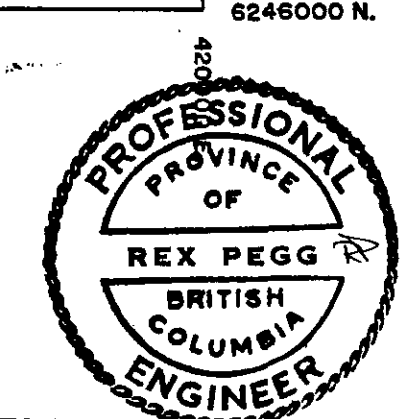
- + BK-88-73 Rock Sample Number
- Property Boundary

**INDEX MAP**



GEOLOGICAL BRANCH  
ASSESSMENT REPORT

22,881 PART 2 OF 2

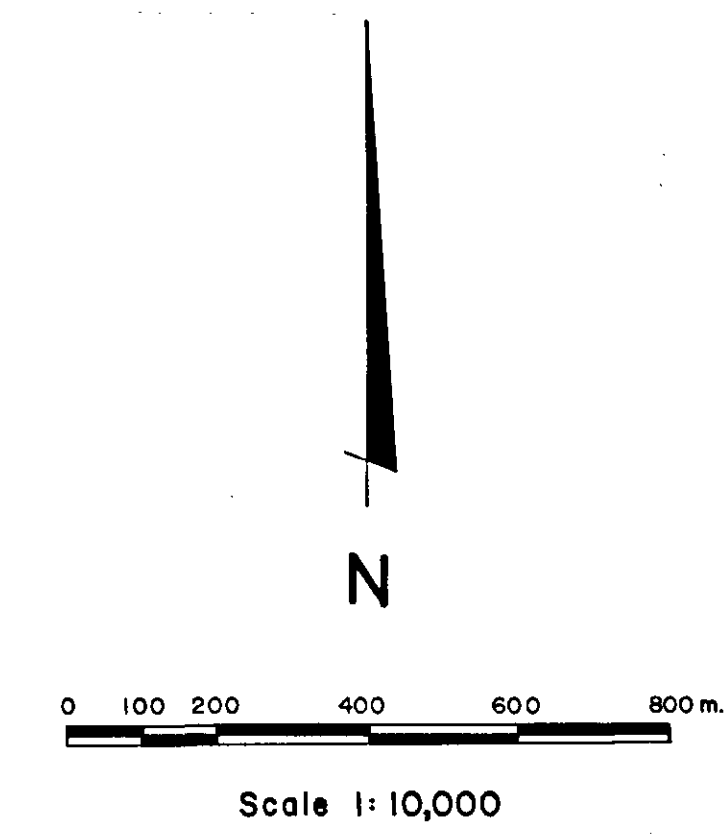
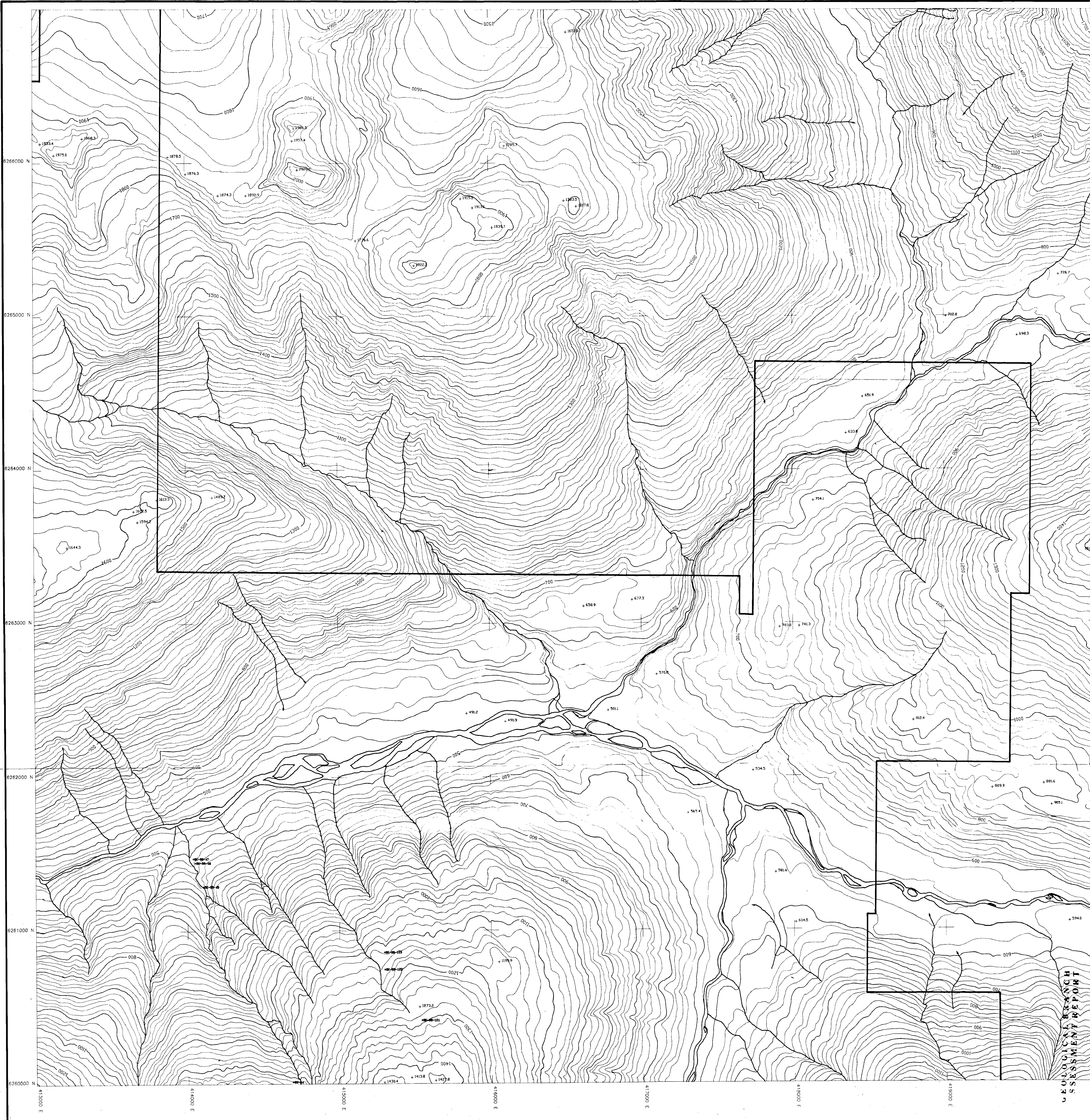


KENRICH MINING CORP.  
AMBERGATE EXPLORATIONS INC.

**COREY PROPERTY  
ROCK SAMPLE LOCATIONS**

DATE: April/93	NTS: 1048/076, 08w, 09e, 10w
PROJECT: COREY	PRD.J. GEOL.
SCALE: 1:10000	

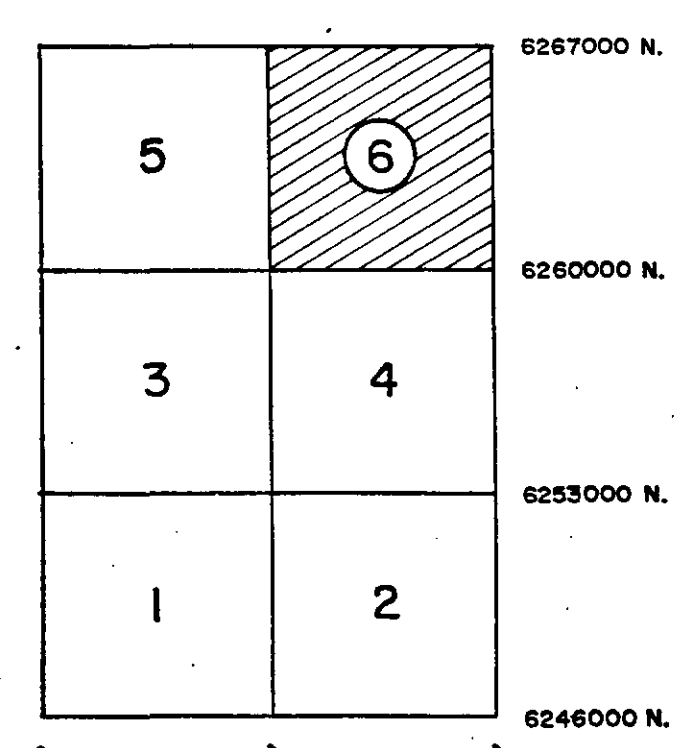
MAP No. 11



**EXPLANATION**

- + BK-88-48 Rock Sample Number
- Property Boundary

**INDEX MAP**



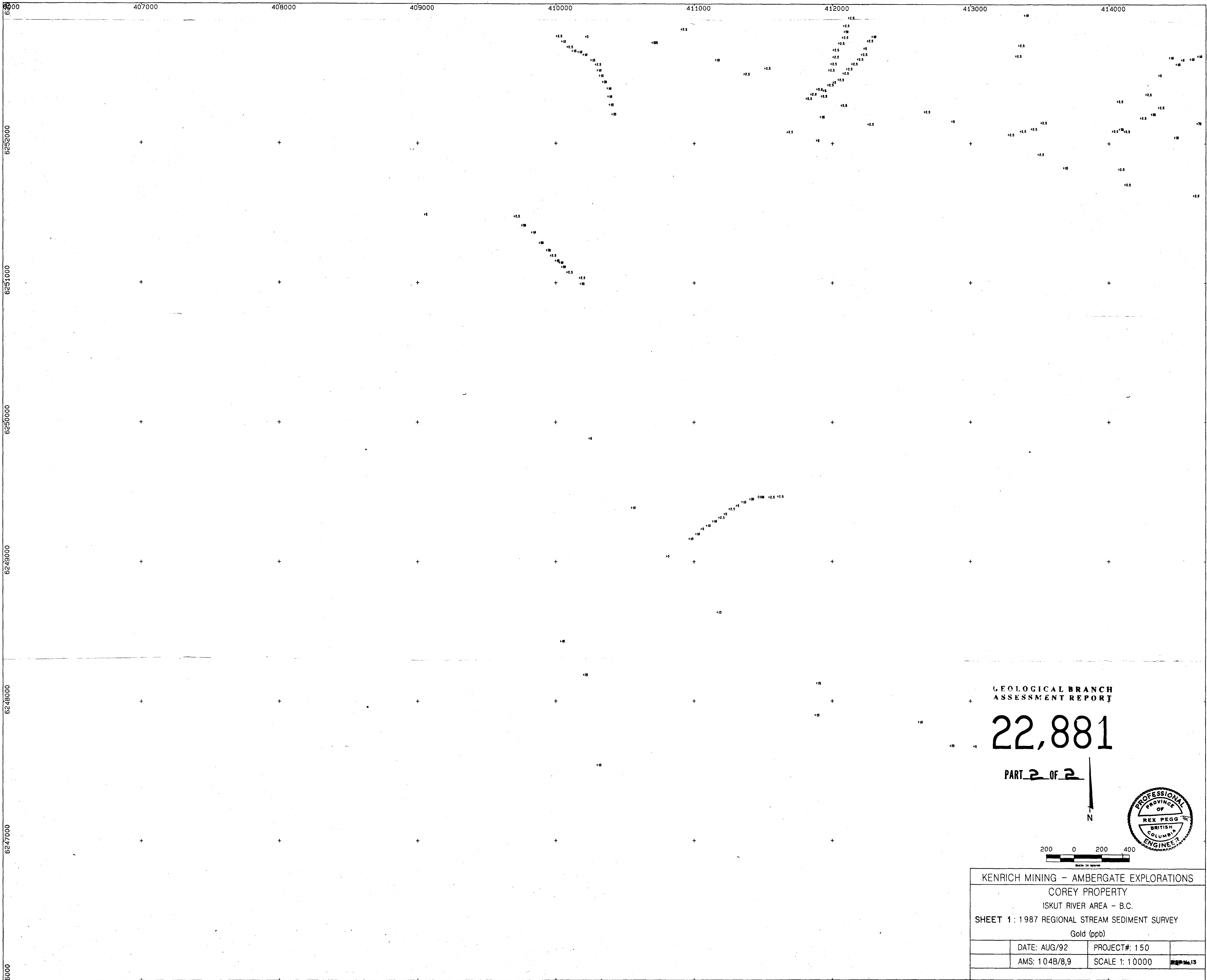
KENRICH MINING CORP.  
AMBERGATE EXPLORATIONS INC.

**COREY PROPERTY  
ROCK SAMPLE LOCATIONS**

DATE: April /93  
PROJECT: COREY  
SCALE: 1:10000  
NTS: 1048/07a\_08w\_09a\_10w  
PRJ. GEOL.  
MAP No. 12

22,881 PART 2 OF 2

GEOLOGICAL BRANCH  
ASSESSMENT REPORT



GEOLOGICAL BRANCH  
ASSESSMENT REPORT

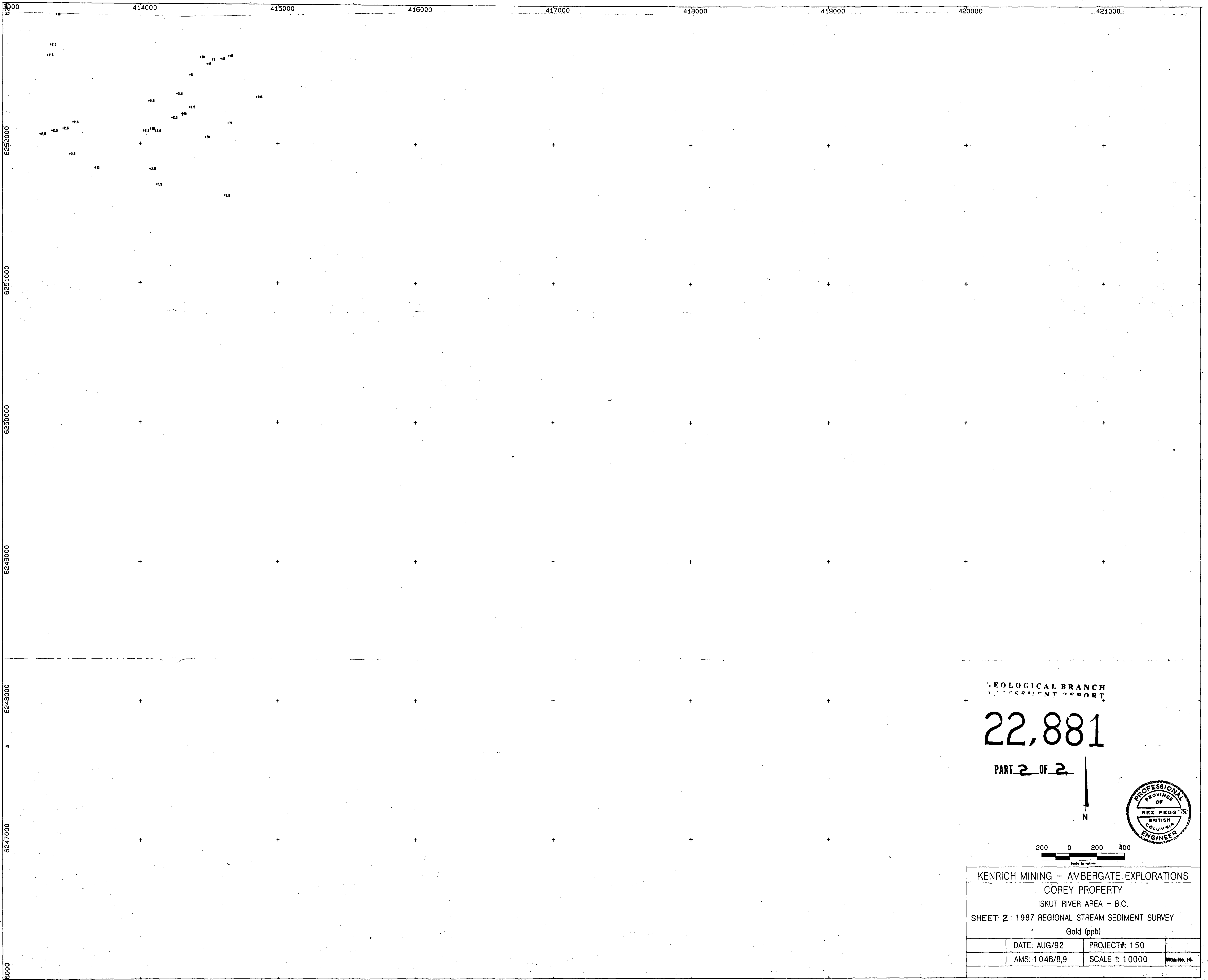
**22,881**

PART 2 OF 2



KENRICH MINING - AMBERGATE EXPLORATIONS			
COREY PROPERTY			
ISKUT RIVER AREA - B.C.			
SHEET 1: 1987 REGIONAL STREAM SEDIMENT SURVEY			
Gold (ppb)			
DATE: AUG/92	PROJECT#: 150		
AMS: 104B/8,9	SCALE 1: 10000	AMS No. 13	

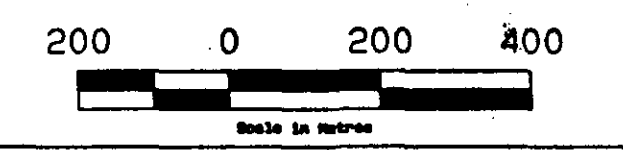




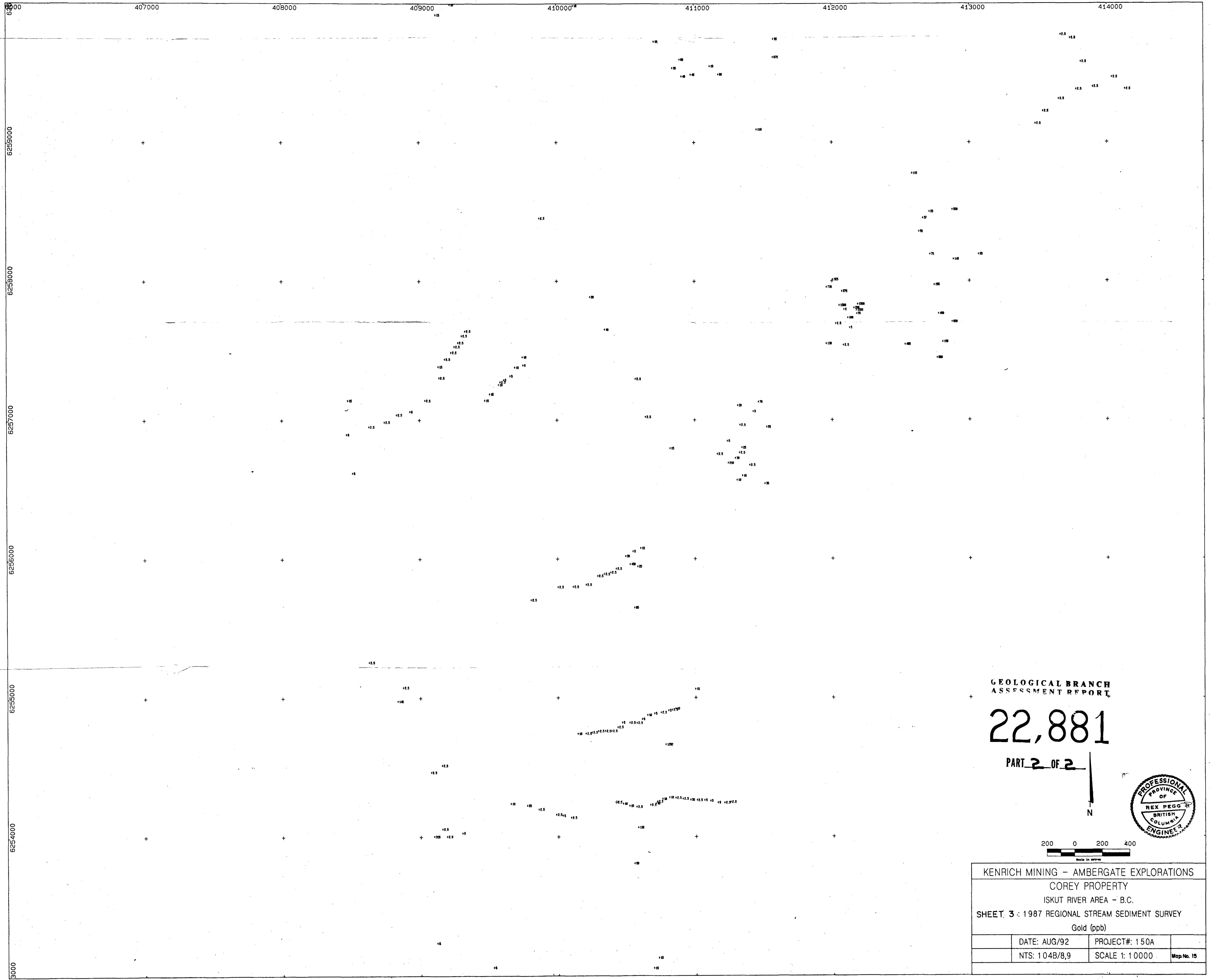
GEOLOGICAL BRANCH  
ASSESSMENT REPORT

22,881

PART 2 OF 2



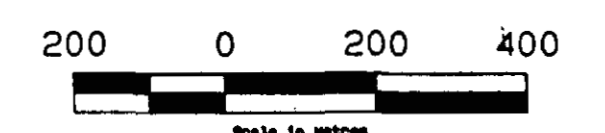
KENRICH MINING - AMBERGATE EXPLORATIONS			
COREY PROPERTY			
ISKUT RIVER AREA - B.C.			
SHEET 2: 1987 REGIONAL STREAM SEDIMENT SURVEY			
Gold (ppb)			
DATE: AUG/92	PROJECT#: 150		
AMS: 104B/8,9	SCALE 1: 10000	Map No. 14	



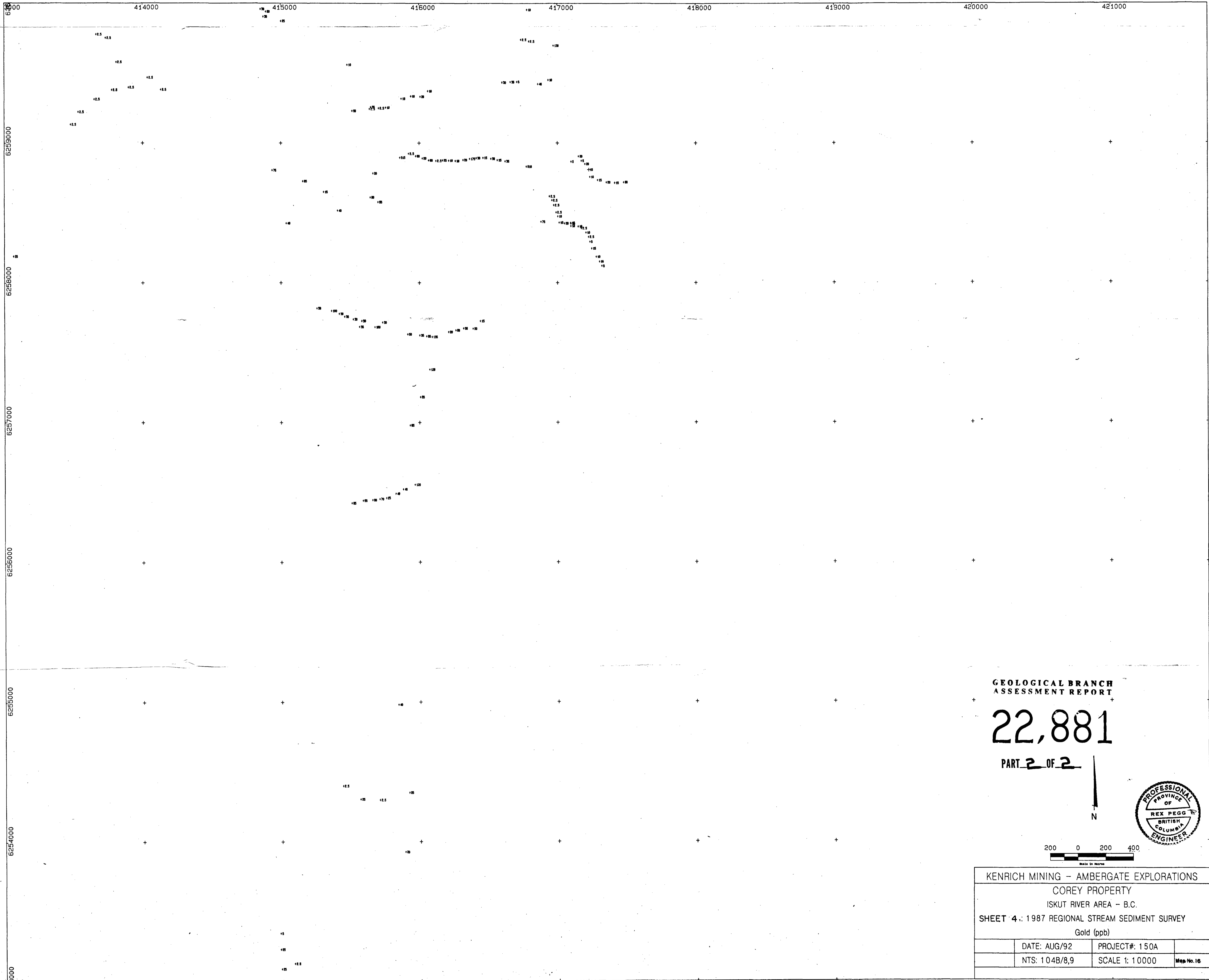
GEOLOGICAL BRANCH  
ASSESSMENT REPORT

22,881

PART 2 OF 2



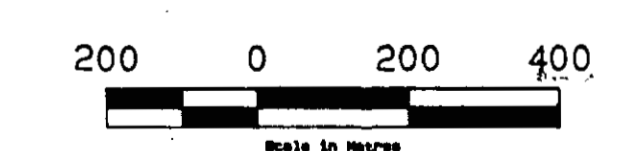
KENRICH MINING - AMBERGATE EXPLORATIONS			
COREY PROPERTY			
ISKUT RIVER AREA - B.C.			
SHEET 3 : 1987 REGIONAL STREAM SEDIMENT SURVEY			
Gold (ppb)			
DATE: AUG/92	PROJECT#: 150A		
NTS: 104B/8,9	SCALE 1: 10000	Map No. 15	



GEOLOGICAL BRANCH  
ASSESSMENT REPORT

22,881

PART 2 OF 2



KENRICH MINING - AMBERGATE EXPLORATIONS			
COREY PROPERTY			
ISKUT RIVER AREA - B.C.			
SHEET 4: 1987 REGIONAL STREAM SEDIMENT SURVEY			
Gold (ppb)			
DATE: AUG/92	PROJECT#: 150A		
NTS: 104B/8,9	SCALE 1: 10000	Map No. 16	

68000 407000 408000 409000 410000 411000 412000 413000 414000

6265000

6265000

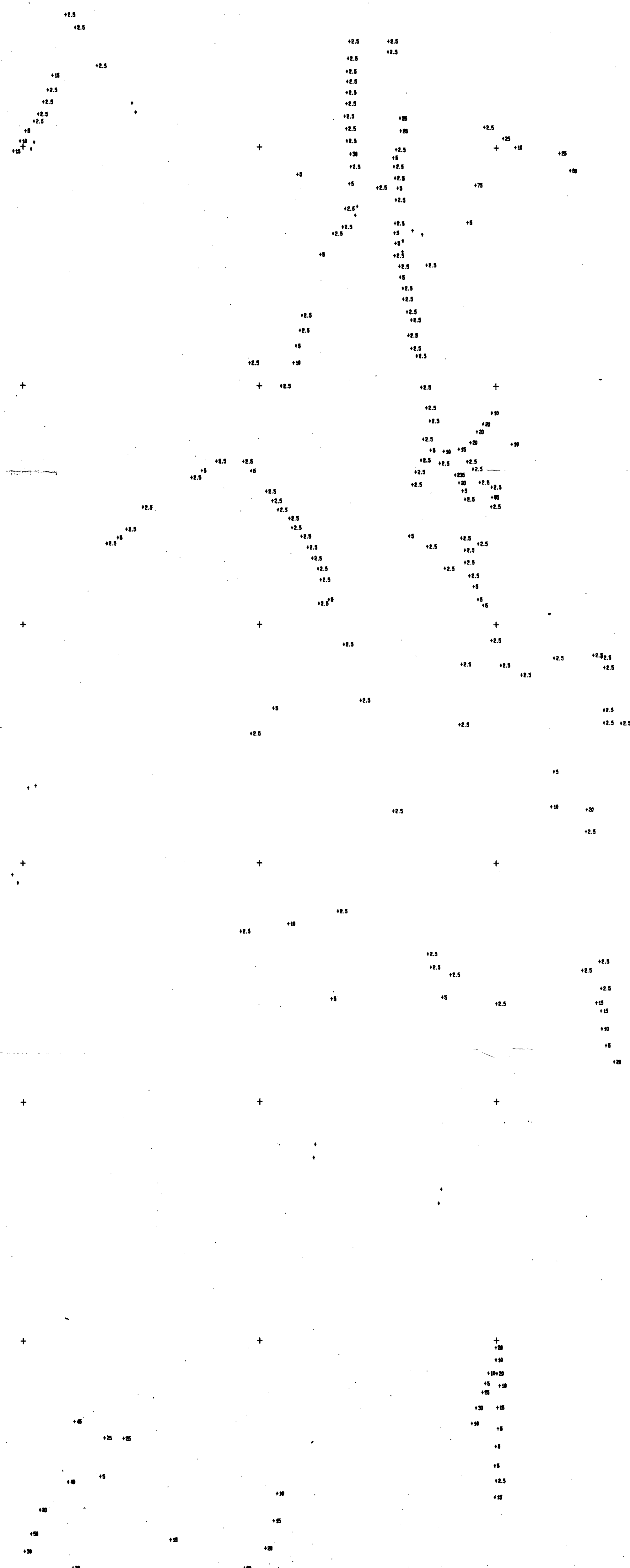
6264000

6263000

6262000

6261000

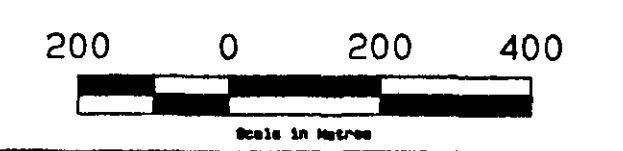
0000



GEOLOGICAL BRANCH  
ASSESSMENT REPORT

22,881

PART 2 OF 2



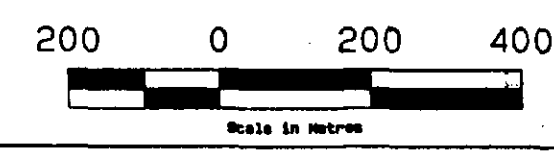
KENRICH MINING - AMBERGATE EXPLORATIONS		
COREY PROPERTY		
ISKUT RIVER AREA - B.C.		
SHEET 5 : 1987 REGIONAL STREAM SEDIMENT SURVEY		
Gold (ppb)		
DATE: AUG/92	PROJECT#: 150A	
NTS: 104B/8,9	SCALE 1: 10000	Map No. 17



GEOLOGICAL BRANCH  
ASSESSMENT REPORT

22,381

PART 2 OF 2



KENRICH MINING - AMBERGATE EXPLORATIONS			
COREY PROPERTY			
ISKUT RIVER AREA - B.C.			
SHEET 6 : 1987 REGIONAL STREAM SEDIMENT SURVEY			
Gold (ppb)			
DATE: AUG/92	PROJECT#: 150A		
NTS: 104B/8,9	SCALE 1: 10000	Map No. 10	

6000 407000 408000 409000 410000 411000 412000 413000 414000

6252000

6251000

6250000

6249000

6248000

6247000

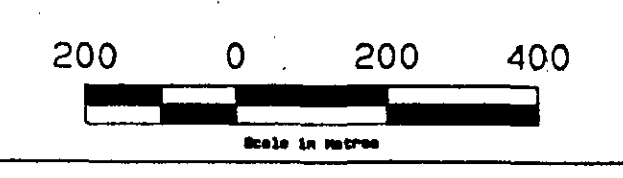
6000



GEOLOGICAL BRANCH  
ASSESSMENT REPORT

22,881

PART 2 OF 2



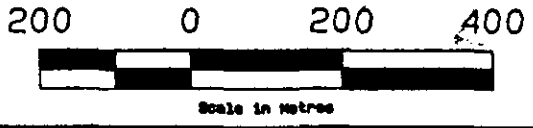
KENRICH MINING - AMBERGATE EXPLORATIONS			
COREY PROPERTY			
ISKUT RIVER AREA - B.C.			
SHEET 1: 1987 LITHOGEOCHEMICAL SURVEY			
Gold (ppb)			
DATE: AUG/92	PROJECT#: 150A		
NTS: 104B/8,9	SCALE 1: 10000	Map No. 19	



GEOLOGICAL BRANCH  
ASSESSMENT REPORT

22,881

PART 2 OF 2



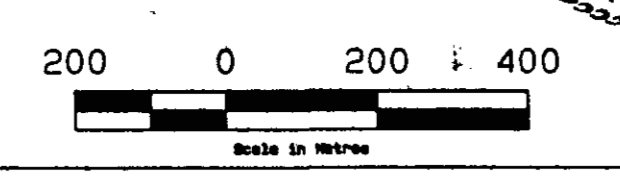
KENRICH MINING - AMBERGATE EXPLORATIONS		
COREY PROPERTY		
ISKUT RIVER AREA - B.C.		
SHEET 2: 1987 LITHOGEOCHEMICAL SURVEY		
Gold (ppb)		
DATE: AUG/92	PROJECT#: 150A	
NTS: 104B/8,9	SCALE 1: 10000	Map No. 20



ECOLOGICAL BRANCH  
ASSESSMENT REPORT

22,881

PART 2 OF 2



KENRICH MINING - AMBERGATE EXPLORATIONS		
COREY PROPERTY		
ISKUT RIVER AREA - B.C.		
SHEET 3: 1987 LITHOGEOCHEMICAL SURVEY		
Gold (ppb)		
DATE: AUG/92	PROJECT#: 150A	
NTS: 104B/8,9	SCALE 1: 10000	Map No. 21





626000 407000 408000 409000 410000 411000 412000 413000 414000

6265000

6265000

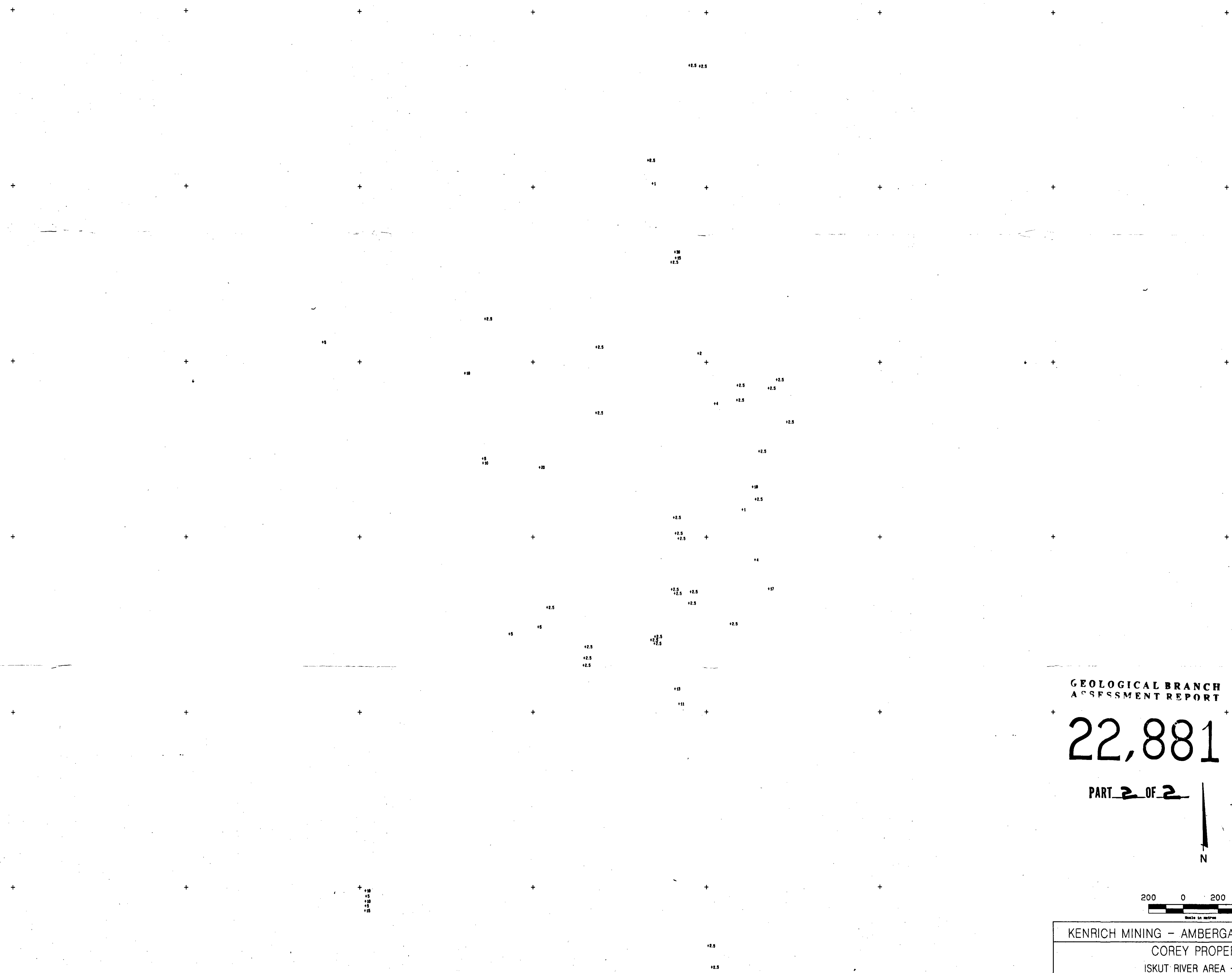
6264000

6263000

6262000

6261000

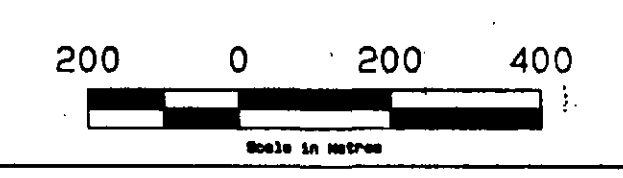
6260000



GEOLOGICAL BRANCH  
ASSESSMENT REPORT

22,881

PART 2 OF 2



KENRICH MINING - AMBERGATE EXPLORATIONS			
COREY PROPERTY			
ISKUT RIVER AREA - B.C.			
SHEET 5: 1987 LITHOGEOCHEMICAL SURVEY			
Gold (ppb)			
DATE: AUG/92	PROJECT#: 150A		
NTS: 104B/8,9	SCALE 1: 10000	Map No. 23	

62000 414000 415000 416000 417000 418000 419000 420000 421000

6266000

6265000

6264000

6263000

6262000

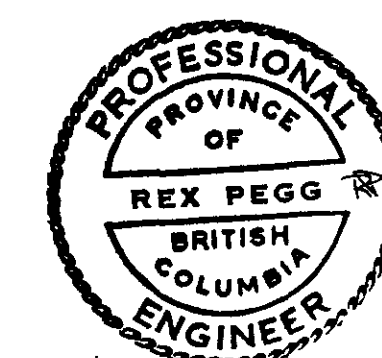
6261000

6260000

GEOLOGICAL BRANCH  
ASSESSMENT REPORT

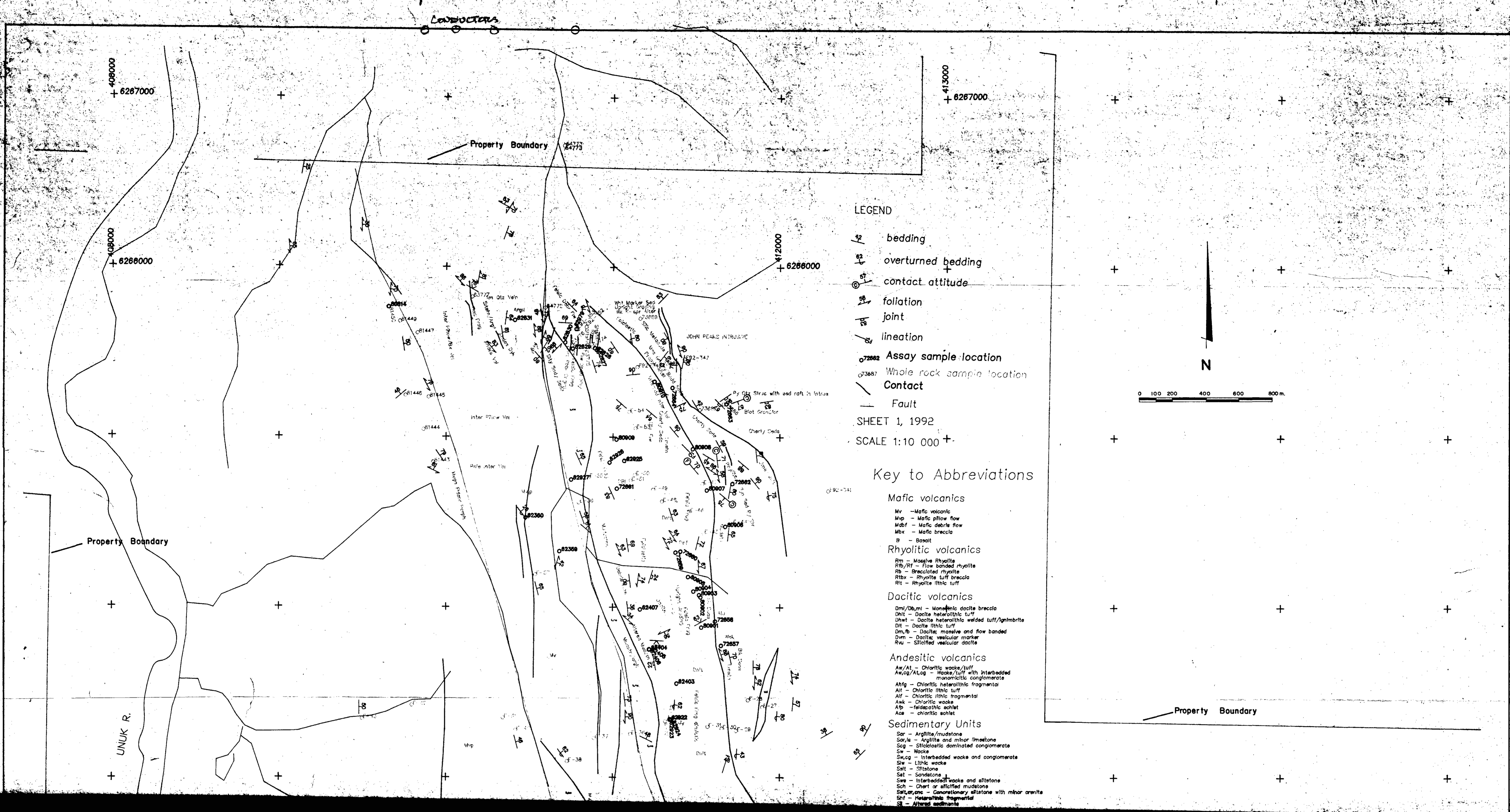
22,881

PART 2 OF 2



200 0 200 400

KENRICH MINING - AMBERGATE EXPLORATIONS			
COREY PROPERTY			
ISKUT RIVER AREA - B.C.			
SHEET 6: 1987 LITHOGEOCHEMICAL SURVEY			
Gold (ppb)			
DATE: AUG/92	PROJECT#: 150A		
NTS: 104B/8,9	SCALE 1: 10000	Map No. 24	



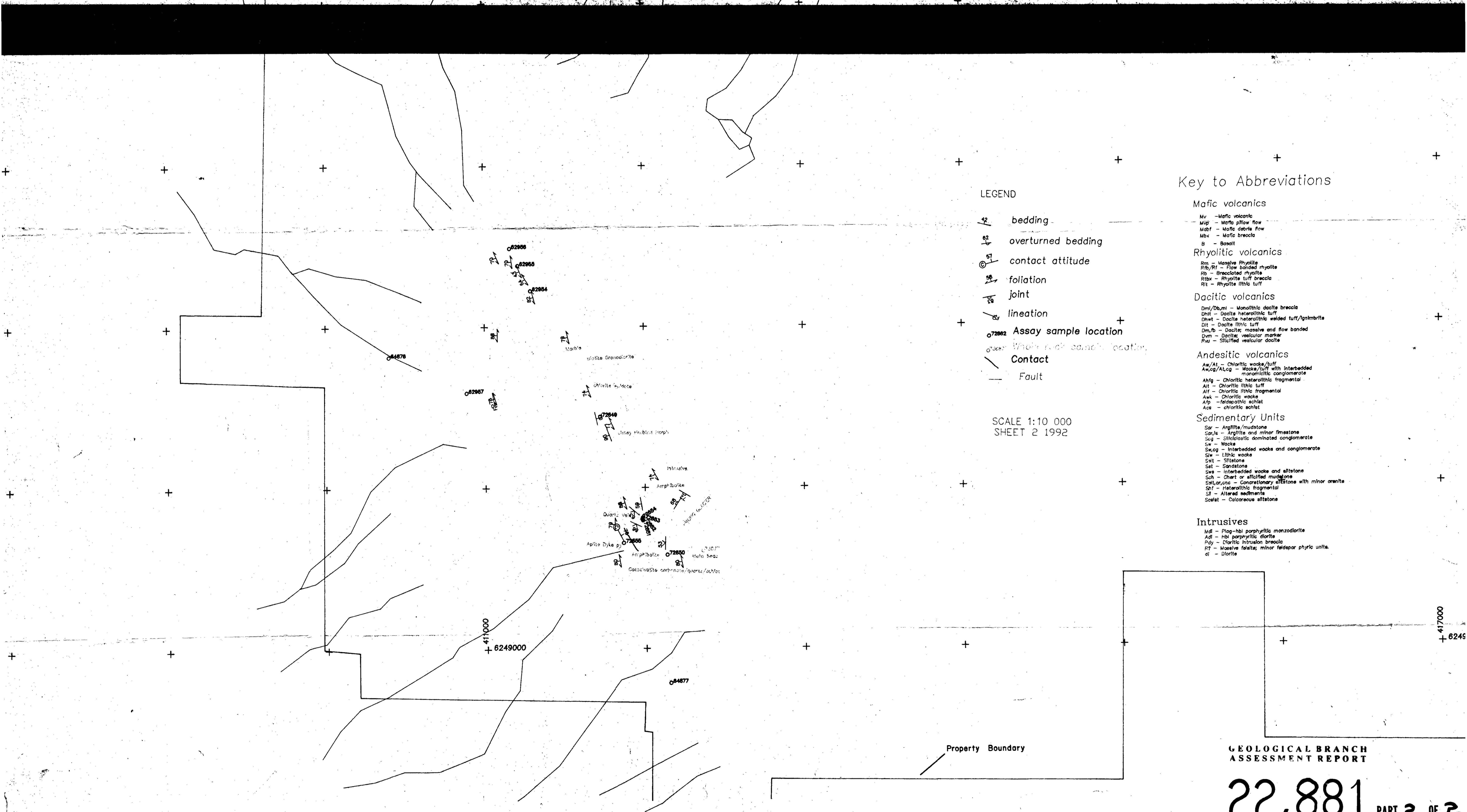
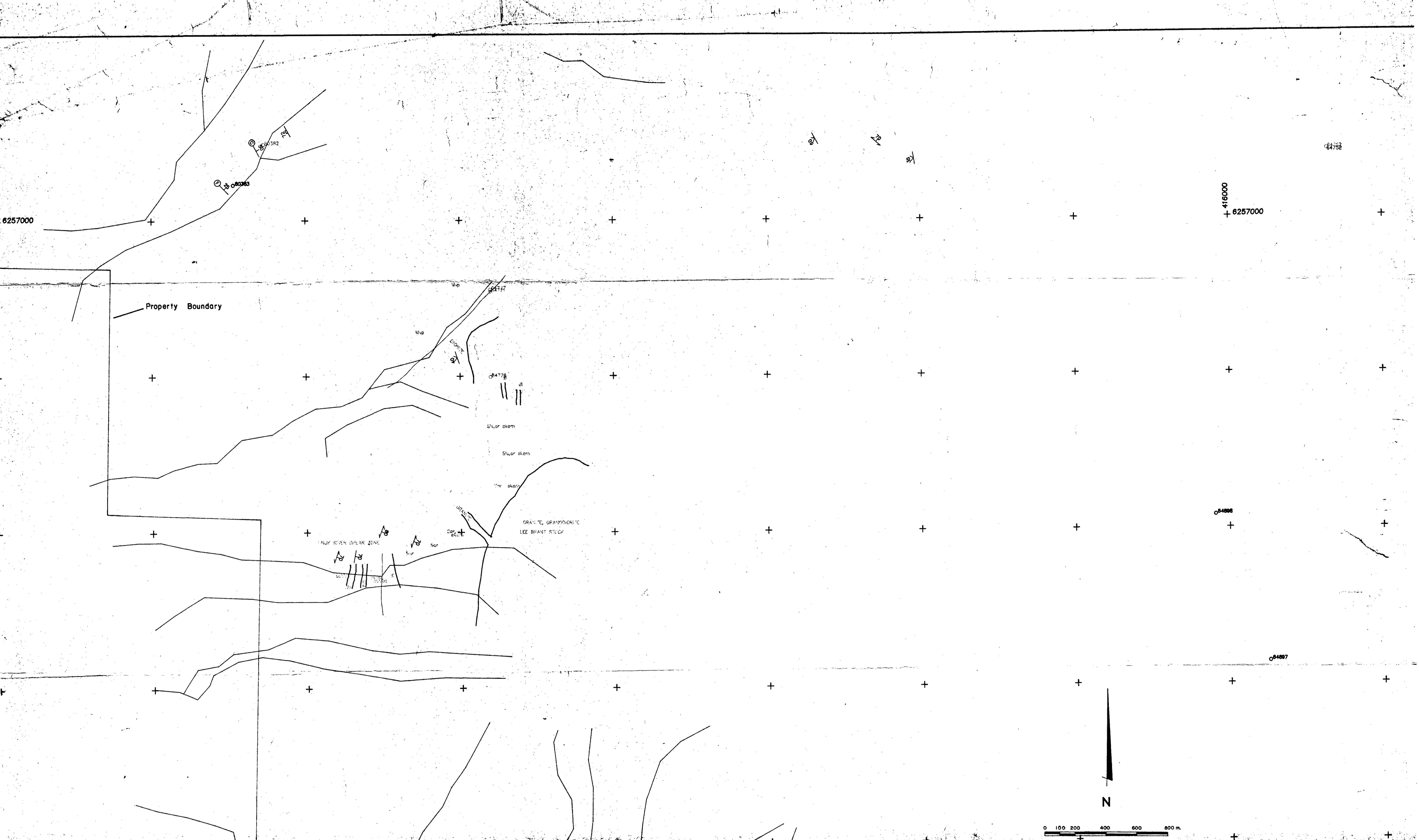
GEOLOGICAL BRANCH  
ASSESSMENT REPORT

**22,881**

PART 2 OF 2



HOMESTAKE CANADA LTD.  
COREY CLAIMS SHEET 1  
1:10 000



LEGEND

- bedding
- overturned bedding
- contact attitude
- foliation
- joint
- lineation
- Assay sample location
- Contact
- Fault

SCALE 1:10 000  
SHEET 2 1992

Key to Abbreviations

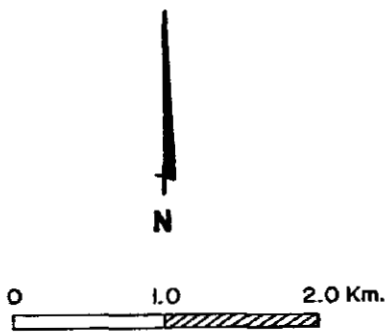
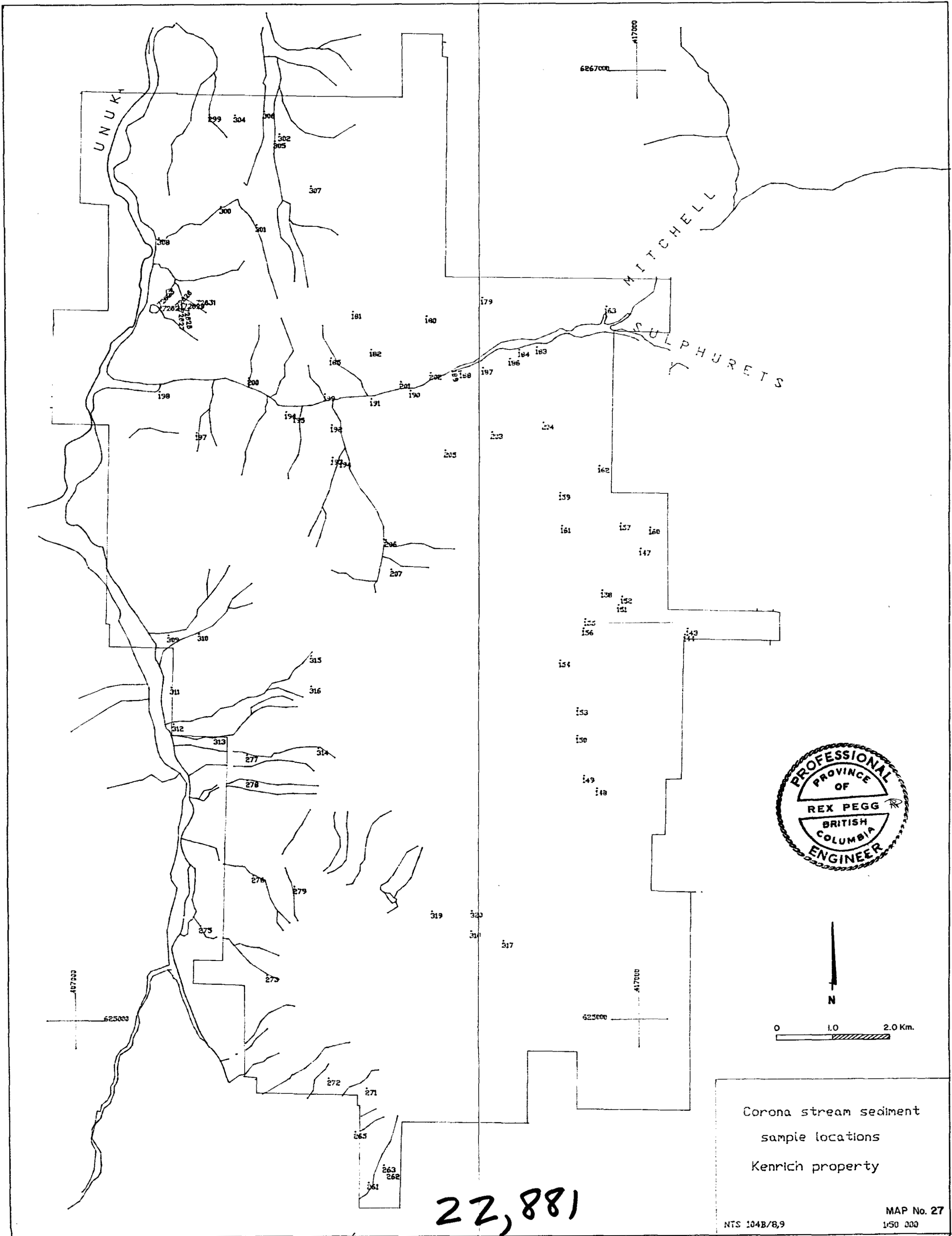
- Mafic volcanics**
  - Mv - Mafic volcanic
  - Mvf - Mafic flow flow
  - Mvdf - Mafic dyke flow
  - Mvb - Mafic breccia
  - B - Basalt
- Rhyolitic volcanics**
  - Rm - Mafic rhyolite
  - Rbf - Flow breccia rhyolite
  - Rb - Brecciated rhyolite
  - Rtb - Rhyolite tuff breccia
  - Rt - Rhyolite tuff
- Dacitic volcanics**
  - Dm/Dm - Monolithic dacite breccia
  - Dm - Dacite heterolithic tuff
  - Dm - Dacite heterolithic welded tuff/epimbrite
  - Dm - Dacite tuff
  - Dm - Dacite, massive and flow banded
  - Dm - Dacite, vesicular mafic
  - Dm - Dacite, vesicular dacite
- Andesitic volcanics**
  - Av/Av - Andesitic volcanic tuff
  - Av/Av - Andesitic volcanic tuff with interbedded mafic breccia
  - Av - Andesitic tuff
  - Av - Andesitic tuff fragmental
  - Av - Andesitic tuff
  - Av - Andesitic tuff
  - Av - Andesitic tuff
  - Av - Andesitic tuff
- Sedimentary Units**
  - Sr - Argillite/mudstone
  - Sr - Argillite and minor limestone
  - Sr - Siliceous dolomitic conglomerate
  - Sr - Mafic
  - Sr - Interbedded mafic and conglomerate
  - Sr - Lithic mafic
  - Sr - Sandstone
  - Sr - Interbedded mafic and allstone
  - Sr - Chert or altered mudstone
  - Sr - Conglomerate allstone with minor granite
  - Sr - Heterolithic fragmental
  - Sr - Altered sediments
  - Sr - Collocous allstone
- Intrusives**
  - Id - Peg- and porphyritic monzonite
  - Id - Peg- and porphyritic diorite
  - Id - Dioritic intrusion breccia
  - Id - Massive mafic, minor felsic phytic units
  - Id - Diorite

GEOLOGICAL BRANCH  
ASSESSMENT REPORT

22,881 PART 2 OF 2

HOMESTAKE CANADA LTD.  
COREY CLAIMS SHEET 2  
1:10 000





Corona stream sediment  
 sample locations  
 Kenrich property

MAP No. 27  
 NTS 104B/8,9  
 1:50 000

22,881