

LOG NO:	JUL 19 1993	RD.
ACTION:		
FILE NO:		

GEOLOGICAL AND GEOCHEMICAL REPORT

ON THE

HOBO-FILLUP MINERAL CLAIMS

Situated in the Parson Area
Golden M.D.

NTS 82N/2E
Latitude 51°02'
Longitude 116°40'

Owner/operator Mountain Minerals Co. Ltd.

STEPHEN B. BUTRECHUK

June, 1993

**GEOLOGICAL BRANCH
ASSESSMENT REPORT**

22,940

TABLE OF CONTENTS

SUMMARY	1	
INTRODUCTION	2	
LOCATION AND ACCESS	2	
PROPERTY	2	
GEOLOGY	5	
MINERALIZATION	5 5	
GEOCHEMISTRY	5 5	
CONCLUSIONS	6	
	6	<i>Statement of Expenditures</i> 7.
		<i>Statement of Qualifications</i> 8.
LIST OF ILLUSTRATIONS		
Figure 1: Location Map	3	
Figure 2: Property Map	4	
Figure 3: Geology Map		In Pocket
Figure 4: Geochemistry: Barite		In Pocket

**GEOLOGICAL AND GEOCHEMICAL REPORT
ON THE
HOBO-FILLUP MINERAL CLAIMS**

SUMMARY

The Fillup claim was staked by Mountain Minerals in 1980 to protect ground surrounding the company's barite mine. In July 1992 the Hobo claims were acquired to cover ground deemed to be favourable for barite mineralization.

Subsequent to the acquisition of the Hobo claims, preliminary soil geochemical and geological surveys were completed on the property. A total of 75 samples were collected and analyzed for Ba. Geological mapping was done at a scale of 1:10000. Results from these surveys indicate that there is potential for locating barite deposits.

INTRODUCTION

Mountain Minerals produces barite from their mine located 5 km south of Parson. The mine is located on 3 Crown Granted Mineral Claims. In 1980, the Fillup claim was acquired and in 1992 the Hobo claims were staked to protect possible extensions of barite mineralization. Subsequent to the acquisition of the Hobo claims a program of soil geochemistry and geological mapping was completed on the property. The results of the work are described in this report.

LOCATION AND ACCESS

The Hobo-Fillup property is located 5 km south of Parson, B.C. AT:

Latitude 51° 02'
Longitude 116° 20'

In particular, the claims are located 6.75 km along a main logging road from Parson. This same road provides access to the mine site. Virtually the entire property is easily accessible from logging roads tributary to the main haulage road.

PROPERTY

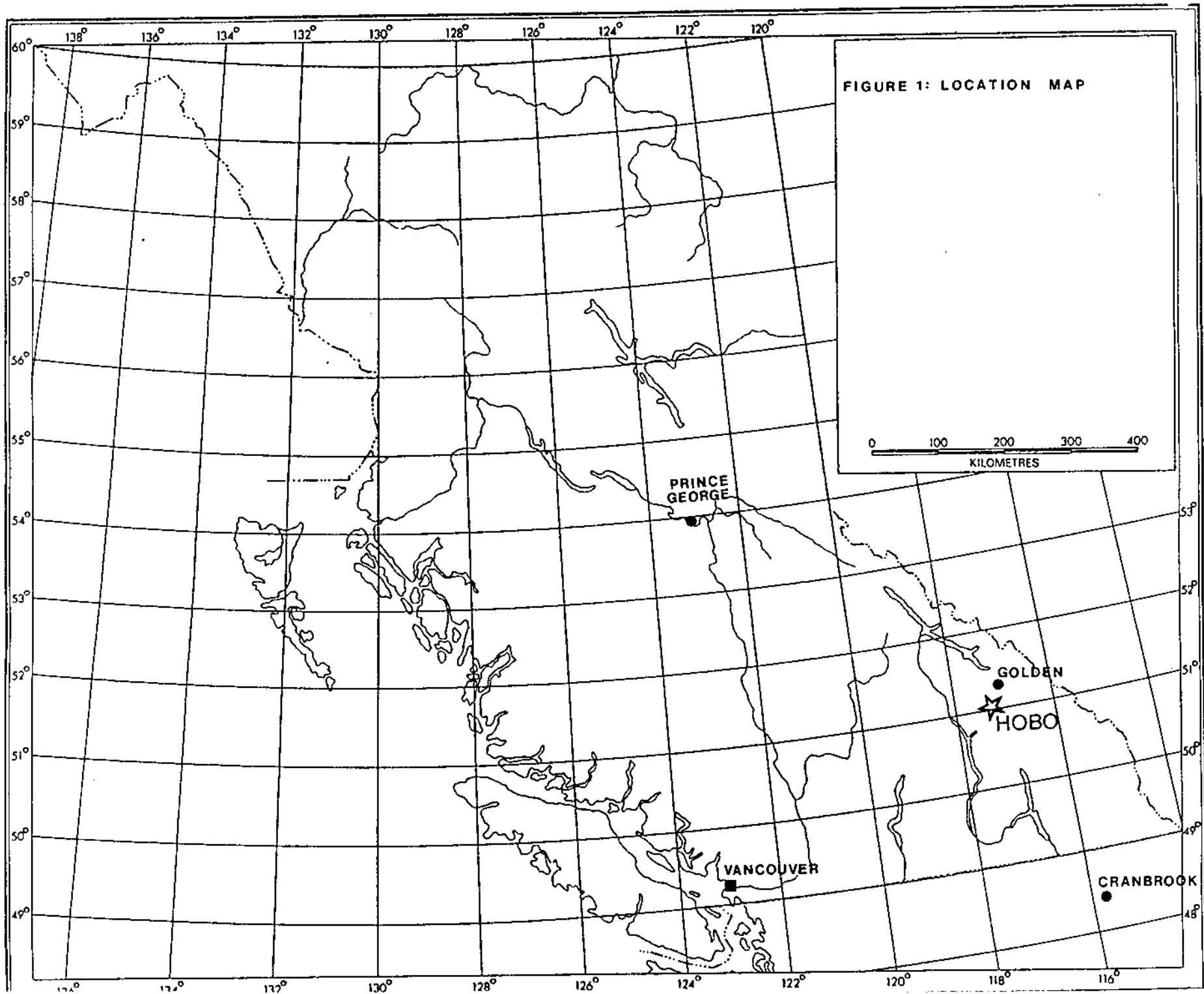
The Fillup and Hobo 1-10 mineral claims are owned by Mountain Minerals Co. Ltd. of Lethbridge, Alberta. The particulars of the claims are described as follows:

<u>Claim</u>	<u>Record No.</u>	<u>Date Recorded</u>	<u>Date Due *</u>
Fillup 1 (20 units)	838	Oct. 21, 1980	Oct. 21, 1993
Hobo #1	311348	July 19, 1992	July 19, 1995
Hobo #2	311349	July 19, 1993	July 19, 1995
Hobo #3	311350	July 19, 1993	July 19, 1995
Hobo #4	311351	July 19, 1992	July 19, 1995
Hobo #5	311668	July 22, 1992	July 22, 1992
Hobo #6	311669	July 22, 1992	July 22, 1993
Hobo #7	311670	July 22, 1992	July 22, 1993
Hobo #8	311671	July 22, 1992	July 22, 1995
Hobo #9	311672	July 22, 1992	July 22, 1992
Hobo #10	311673	July 22, 1992	July 22, 1995

* Pending acceptance of this report.

Company also owns 3 Crown Granted Mineral Claims

- Hilltop DL 14351
- Snowdrop DL 14352
- Honest John DL 15734



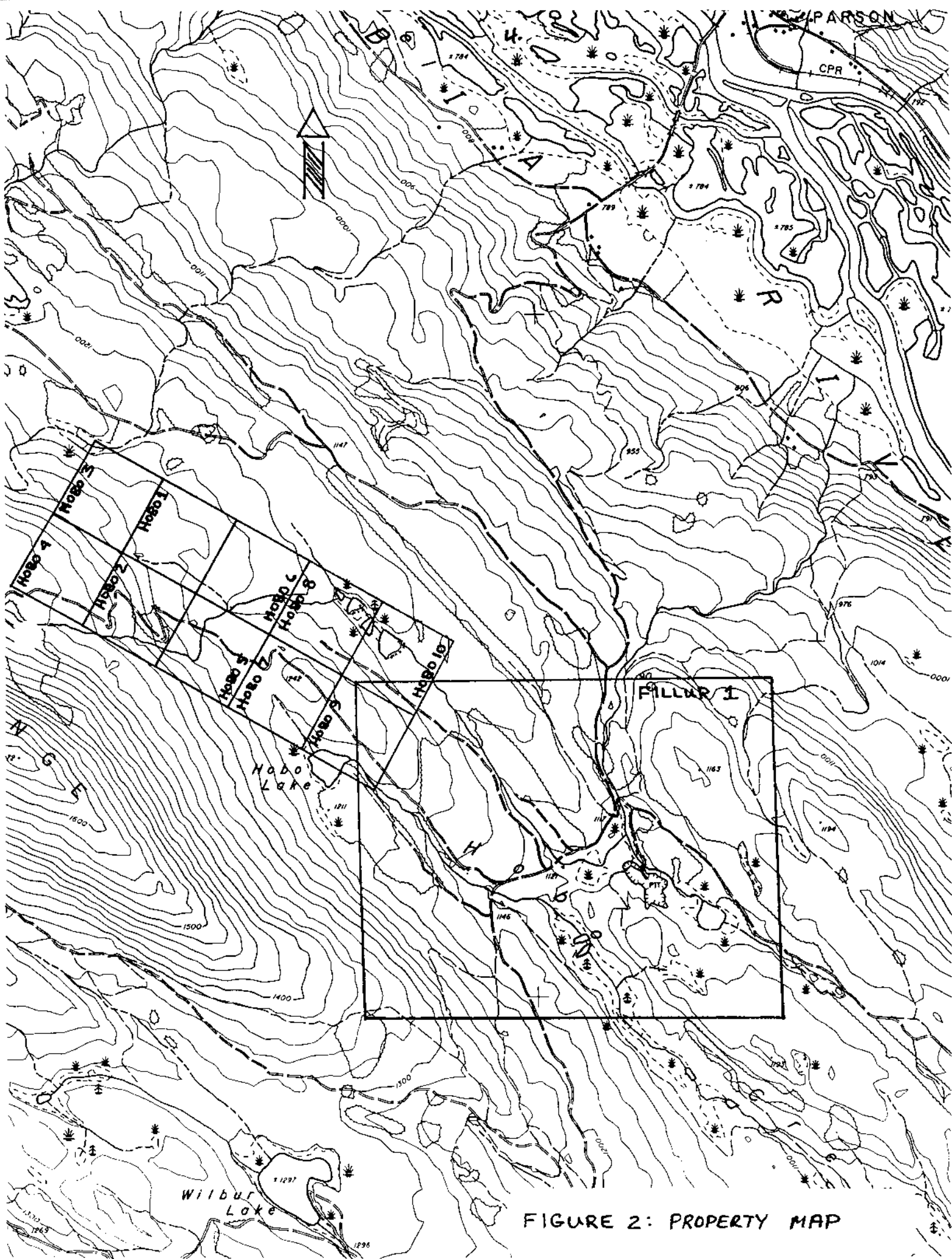


FIGURE 2: PROPERTY MAP

GEOLOGY

Northwest trending clastic rocks of Proterozoic to Cambrian age are present on the property. Three units have been identified on the property.

The oldest rocks present belong to the Proterozoic Horsethief Creek Group. These are predominantly shales and silty shales with quartz siltstone and sandstones. Exposures are restricted to the southwest portion of the property.

Overlying this unit are quartzite and quartzose sandstone of the Lower Cambrian Hamil Formation. Some shale and dolomite are present in the vicinity of the mine. This unit occupies the central portion of the property and is host to the barite deposits.

The youngest rocks are slate and siltstone of the Lower Cambrian Donald Formation. They are restricted to the eastern and northeastern margin of the property.

MINERALIZATION

Barite occurs in irregular fissure veins which are interpreted as originating within tensile fractures developed between two low angle thrust faults. The two main veins outcrop approximately 100 metres apart. Their strike is northerly along the southern extensions, becoming northwesterly in the northern portion. The barite is white to creamy white and coarse-grained. Minor to trace amounts of quartz, pyrite, chalcopyrite, siderite and calcite occur with the barite.

Traces of barite were observed in Hamil rocks near the northwestern end of the Hobo claims.

GEOCHEMISTRY

A partial geochemical survey was completed on the Hobo claims and along two logging roads on the Fillup claim. Samples were collected at 100 metre intervals along the geological trend and at 50 metre intervals across the trend. Some sampling was done at 25 metre intervals. Samples were collected from the "b" horizon and placed in kraft paper bags, dried and shipped to Acme Laboratories in Vancouver. Here the samples were analyzed for barium using ICP techniques.

Values for barium ranged from 365 to greater than 2500 ppm. Anomalous values are considered to be those greater or equal to 1000 ppm. A number of anomalous values were obtained near the northwestern end of the Hobo claims. Elsewhere, single anomalous values were obtained.

CONCLUSIONS

Both the geochemistry and geology of the Hobo claims suggest there is potential for locating barite mineralization. Further soil geochemistry and follow-up trenching is warranted.

Report by:

STEPHEN B. BUTRENCHUK

Stephen B. Butrenchuk

STATEMENT OF EXPENDITURE

SALARIES

S. Butrenchuk - 6 days @ \$250/day	\$1,500.00
------------------------------------	------------

ANALYSES

75 samples @ \$5/sample	375.00
-------------------------	--------

EXPENSES

Gas, food, lodging	<u>361.00</u>
--------------------	---------------

	\$2,236.00
--	------------

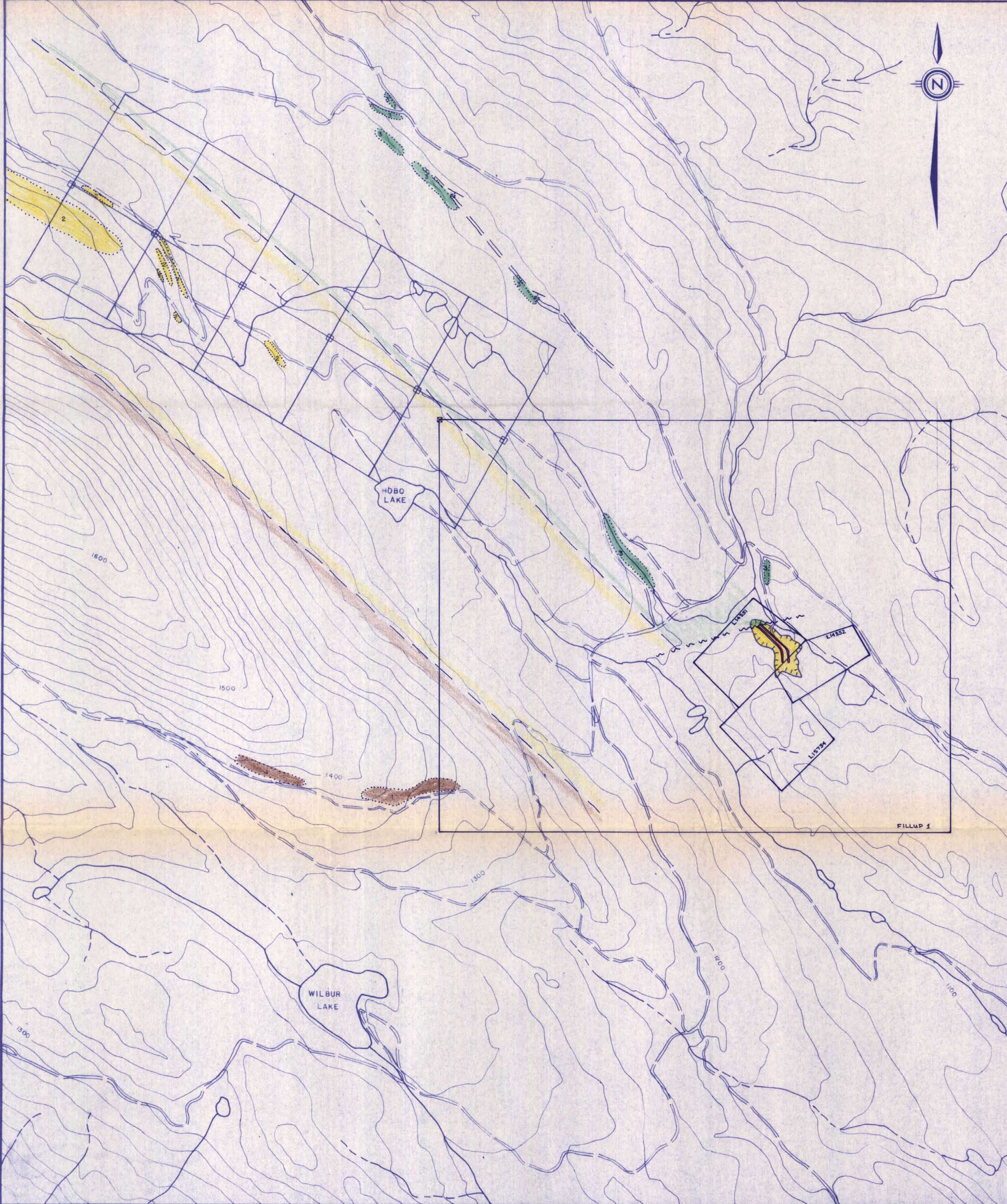
STATEMENT OF QUALIFICATIONS

I, Stephen B. Butrenchuk, of 34 Temple Crescent West, Lethbridge, Alberta, do hereby certify that:

1. I am the Exploration Manager for Mountain Minerals Co. Ltd. of Lethbridge, Alberta.
2. I am a graduate of the University of Manitoba with a B.Sc. in geology (1966) and a M.Sc. in geology (1970).
3. I have been practising my profession in British Columbia and the Yukon since graduation.
4. I am a fellow of the Geological Association of Canada and a member of the Society for Mining, Metallurgy and Exploration, Inc.
5. This report is based upon knowledge of the Fillup-Hobo property gained from supervision of exploration work on the property.

STEPHEN B. BUTRENUK

Stephen B. Butrenchuk.



LEGEND

CAMBRIAN

- Donald Fm. - slate, siltstone, shale
- Hamil Fm. - quartzite, quartzose sandstone, siltstone, silty shale

HADRYNIAN

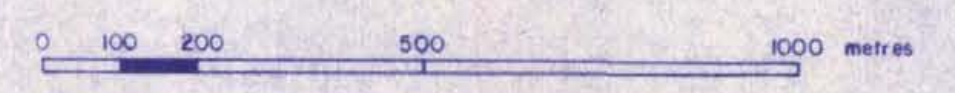
- Horsethief Creek Fm. - shale, silty shale, siltstone, sandstone

SYMBOLS

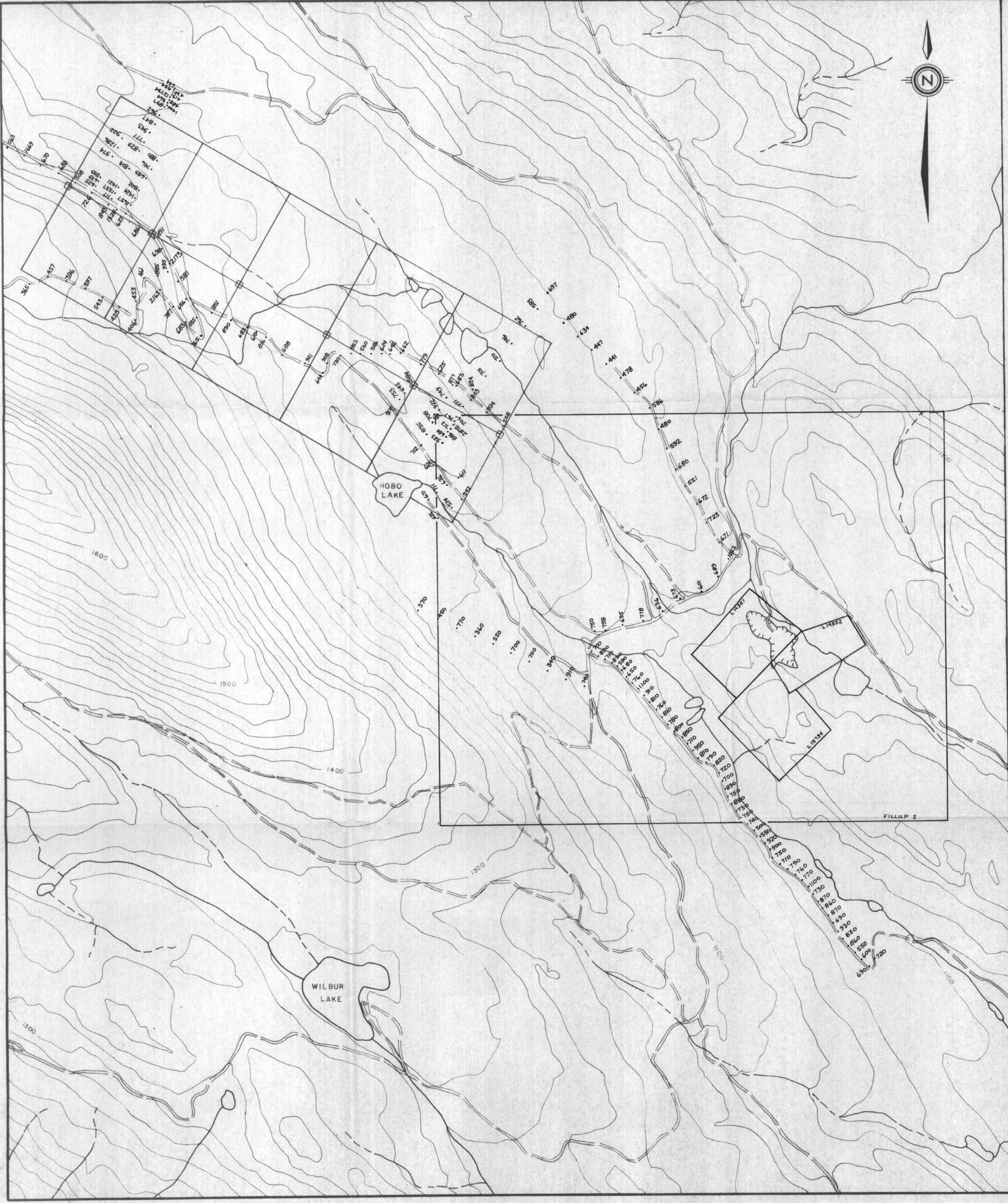
- Barite vein
- Fault (known, assumed)
- Bedding (inclined)
- Geological contact (approximate)
- Outcrop

GEOLOGICAL BRANCH
ASSESSMENT REPORT

22,940

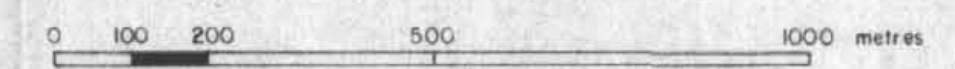


MOUNTAIN MINERALS CO. LTD.	
714-5 Ave. S, LETHBRIDGE, ALBERTA. T4J 0V1, 329-0443	
HOBO - FILLUP CLAIMS	
GEOLOGY MAP	
SCALE 1:10000	DESIGN BY
DATE OCTOBER, 1992	REVISED
DRAWN BY SBB	DRAWING NO. 3



**GEOLOGICAL BRANCH
ASSESSMENT REPORT**

22,940



MOUNTAIN MINERALS CO. LTD.	
714 - 5 Ave. S, LETHBRIDGE, ALBERTA. T1J 0V1, 329-0443	
HOBO - FILLUP CLAIMS	
GEOCHEMISTRY: BARITE PPM	
SCALE 1:10000	DESIGN BY
DATE OCTOBER, 1992	REVISED
DRAWN BY SBB	DRAWING NO. 4