

ARIS SUMMARY SHEET

District Geologist, Nelson

Off Confidential: 94.10.19

ASSESSMENT REPORT 23075

MINING DIVISION: Golden

PROPERTY: Fillup
LOCATION: LAT 51 02 00 LONG 116 40 00
UTM 11 5653365 523373
NTS 082N02E
CLAIM(S): Fillup 1,Hobo 1-2,Hobo 5-8
OPERATOR(S): Mountain Min.
AUTHOR(S): Butrenchuk, S.B.
REPORT YEAR: 1993, 16 Pages
COMMODITIES
SEARCHED FOR: Barium/Barite
KEYWORDS: Hadrynian-Cambrian,Hamil formation,Quartzites,Barite
WORK
DONE: Geological,Geochemical
SOIL 169 sample(s) ;BA
Map(s) - 1; Scale(s) - 1:10 000

LOG NO:	NOV 02 1993	RD.
ACTION:		
FILE NO:		

GEOLOGICAL AND GEOCHEMICAL REPORT

ON THE

FILLUP MINERAL CLAIM

**Situated in the Parson Area
Golden M.D.**

**NTS 82N/2E
Latitude 51 02'
Longitude 116 40'**

STEPHEN B. BUTRENCHUK

October, 1993

**GEOLOGICAL BRANCH
ASSESSMENT REPORT**

23,075

7

TABLE OF CONTENTS

	<u>PAGE</u>
SUMMARY	
INTRODUCTION	1
LOCATION AND ACCESS	2
PROPERTY	2
GEOLOGY	2
MINERALIZATION	5
GEOCHEMISTRY	5
CONCLUSIONS	6

LIST OF ILLUSTRATIONS

Figure 1:	Location Map	3
Figure 2:	Property Map	4
Figure 3:	Geochemistry: Barite	In Pocket

**GEOLOGICAL AND GEOCHEMICAL REPORT
ON THE
FILLUP MINERAL CLAIM**

SUMMARY

The Fillup claim was staked by Mountain Minerals in 1980 to protect ground surrounding the company's barite mine. In July 1992 the Hobo claims were acquired to cover ground deemed to be favourable for barite mineralization.

Subsequent to the acquisition of the Hobo claims, preliminary soil geochemical and geological surveys were completed on the property. In 1992 75 samples were collected and analyzed for Ba. Geological mapping was done at a scale of 1:10000. Results from these surveys indicate that there is potential for locating barite deposits.

In 1993 an additional 169 soil samples were collected to complete the geochemical coverage on the Hobo claims and the northwest corner of the Fillup claim.

INTRODUCTION

Mountain Minerals produces barite from their mine located 5 km south of Parson. The mine is located on 3 Crown Granted Mineral Claims. In 1980, the Fillup claim was acquired and in 1992 the Hobo claims were staked to protect possible extensions of barite mineralization. In 1993 a program of soil geochemistry was completed on the Hobo and Fillup claims. The results of the work are described in this report.

LOCATION AND ACCESS

The Fillup property is located 5 km south of Parson, B.C. at:

Latitude 51 02'
Longitude 116 20'

In particular, the claims are located 6.75 km along a main logging road from Parson. This same road provides access to the mine site. Virtually the entire property is easily accessible from logging roads tributary to the main haulage road.

PROPERTY

The Fillup mineral claim is owned by Mountain Minerals Co. Ltd. of Lethbridge, Alberta. The particulars of the claim are described as follows:

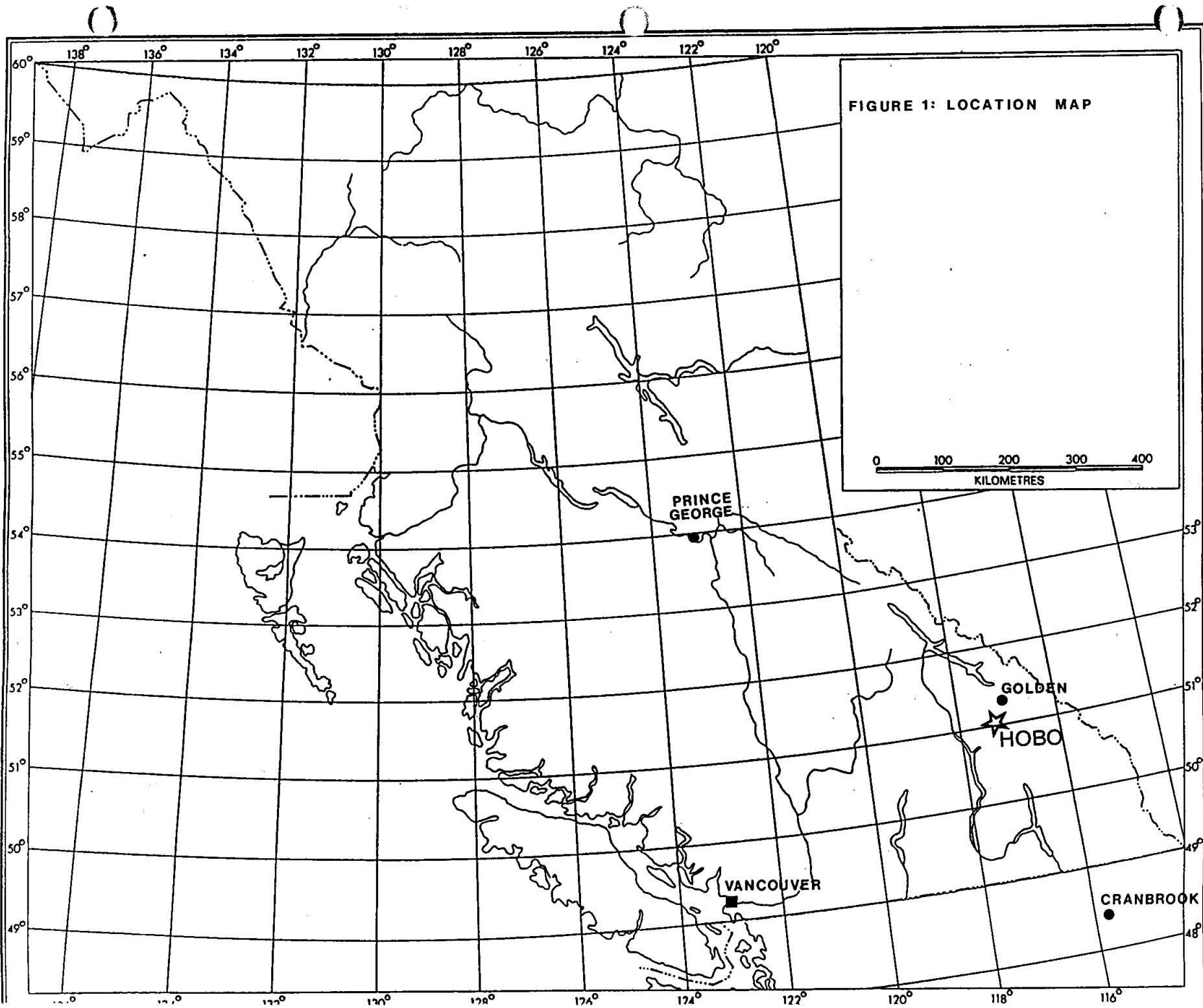
<u>Claim</u>	<u>Record No.</u>	<u>Date Recorded</u>	<u>Date Due *</u>
Fillup 1 (20 units)	213194	Oct. 21, 1980	Oct. 21, 1994

* Pending acceptance of this report.

GEOLOGY

Northwest trending clastic rocks of Proterozoic to Cambrian age are present on the property. Three units have been identified on the property.

The oldest rocks present belong to the Proterozoic Horsethief Creek Group. These are predominantly shales and silty shales with quartz siltstone and sandstones. Exposures are restricted to the southwest portion of the property.



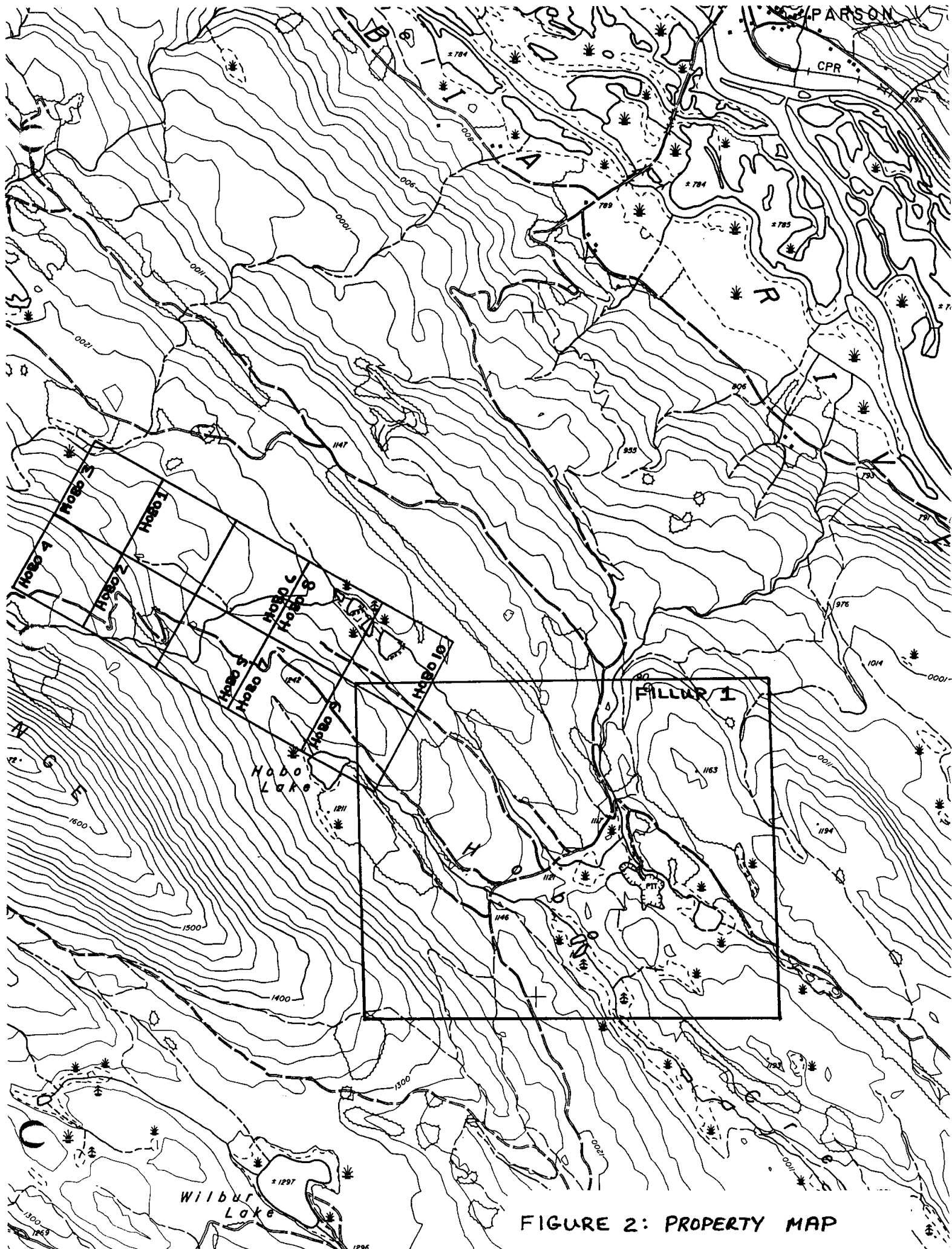


FIGURE 2: PROPERTY MAP

Overlying this unit are quartzite and quartzose sandstone of the Lower Cambrian Hamil Formation. Some shale and dolomite are present in the vicinity of the mine. This unit occupies the central portion of the property and is host to the barite deposits.

The youngest rocks are slate and siltstone of the Lower Cambrian Donald Formation. They are restricted to the eastern and northeastern margin of the property.

MINERALIZATION

Barite occurs in irregular fissure veins which are interpreted as originating within tensile fractures developed between two low angle thrust faults. The two main veins outcrop approximately 100 metres apart. Their strike is northerly along the southern extensions, becoming northwesterly in the northern portion. The barite is white to creamy white and coarse-grained. Minor to trace amounts of quartz, pyrite, chalcopyrite, siderite and calcite occur with the barite.

Traces of barite were observed in Hamil rocks near the northwestern end of the Hobo claims.

GEOCHEMISTRY

During the period August 15, 1993, to October 10, 1993, a total of 169 soil samples were collected on the Fillup and Hobo claims. Samples were collected at 50 metre intervals along lines spaced at either 100 or 200 metre intervals. Fourteen samples were also collected along a logging road situated in the southwest corner of the Fillup claims. Samples were collected from the "b" horizon and placed in kraft paper bags, dried and shipped to International Plasma Laboratories in Vancouver. Here the samples were analyzed for barium using a total digestion and ICP techniques.

Values for barium ranged from 423 to 1052 ppm. Anomalous values are considered to be those greater than 1000 ppm and moderately anomalous values are those greater than 800 ppm. Only one anomalous value and a few moderately anomalous values were obtained in the 1993 geochemical survey.

The overburden in this area is thick. Moderately anomalous values may be indicative of barite mineralization that has been masked to some degree by the overburden.

CONCLUSIONS

Both the geochemistry and geology of the Hobo claims suggest there is potential for locating barite mineralization. Further soil geochemistry and follow-up trenching is warranted.

Report by:

STEPHEN B. BUTRENCHUK

Stephen B. Butrenchuk

STATEMENT OF EXPENDITURE

SALARIES

S. Butrenchuk - 6 days @ \$250/day	\$1,500.00
A. Louie - 5 days @ \$140/day	700.00

ANALYSES

169 samples @ \$9.63/sample	1,670.00
-----------------------------	----------

EXPENSES

Gas, food, lodging	<u>360.00</u>
--------------------	---------------

\$4,187.00

STATEMENT OF QUALIFICATIONS

I, Stephen B. Butrenchuk, of 34 Temple Crescent West, Lethbridge, Alberta, do hereby certify that:

1. I am the Exploration Manager for Mountain Minerals Co. Ltd. of Lethbridge, Alberta.
2. I am a graduate of the University of Manitoba with a B.Sc. in geology (1966) and a M.Sc. in geology (1970).
3. I have been practising my profession in British Columbia and the Yukon since graduation.
4. I am a fellow of the Geological Association of Canada and a member of the Society for Mining, Metallurgy and Exploration, Inc.
5. This report is based upon knowledge of the Fillup-Hobo property gained from supervision of exploration work on the property.

STEPHEN B. BUTRENUK

Stephen B. Butrenchuk



INTERNATIONAL PLASMA LABORATORY LTD.

CERTIFICATE OF ANALYSIS

iPL 93H3101

2030 Columbia Street
Vancouver, B.C.
Canada V5Y 3E1
Phone (604) 879-7878
Fax (604) 879-7898

Mountain Minerals Co. Ltd.

120 Samples

0= Rock 120= Soil 0= Core 0=RC Ct 0= Pulp 0=Other

[044213:09:46:39090393]

Out: Sep 03, 1993 Project: None Given

Raw Storage: -- 00Mon/Dis

-- 00Mon/Dis

--

--

--

--

Mon=Month Dis=Discard

In: Aug 31, 1993 Shipper: Steve Butrenchuk

Pulp Storage: -- 12Mon/Dis

-- 12Mon/Dis

--

--

--

--

Rtn=Return Arc=Archive

PD#: Shipment: ID=C032801

Msg: 8a total digestion

Analytical Summary

Msg:

Code Met Title Limit Limit Units Description Element

Document Distribution

hod Low High

1 Mountain Minerals Co. Ltd. EN RT CC IN FX
Box 700 1 2 2 2 1
Lethbridge DL 3D 5D BT BL
AB T1J 3Z6 0 0 0 1 0

01 704P ICP Ba 2 9999 ppm Ba ICP Barium 01

ATT: Steve Butrenchuk

Ph: 403/329-0443

Fx: 403/328-9110

EN=Envelope # RT=Report Style CC=Copies IN=Invoices
DL=Download 3 1/2 Disk 5D=5-1/4 Disk BT=BBS Type

FX=Fax(1=Yes 0=No)
BL=BBS(1=Yes 0=No)

Total () 2=Copy 2=Invoice 0=3-1/2 Disk 0=5-1/4 Disk

SENI BY: MOUNTAIN MINERALS
2-11-94 11:30
4033289110-
604 9520381, # 2



INTERNATIONAL PLASMA LABORATORY LTD.

CERTIFICATE OF ANALYSIS

iPL 93H3101

2036 Columbia Street
 Vancouver, B.C.
 Canada V5Y 3E1
 Phone (604) 879-7878
 Fax (604) 879-7898

Client: Mountain Minerals Co. Ltd.
 Project: None Given 120 Soil

iPL: 93H3101 M

Out: Sep 03, 1993
 In: Aug 31, 1993

Page 1 of 4

Section 1 of 1
 Certified BC Assayer: David Chiu

Sample Name	Ba ppm	Sample Name	Ba ppm	Sample Name	Ba ppm	Sample Name	Ba ppm	Sample Name	Ba ppm
BRISCODE# 1	698	H093- 20	678	H093- 59	645	TC 28 .E	636		
BRISCODE# 2	549	H093- 21	792	H093- 60	676	TC 29 .E	488		
BRISCODE# 3	724	H093- 22	831	H093- 61	750	TC 30 .E	309		
BRISCODE# 4	1.1%	H093- 23	569	H093- 62	589				
BRISCODE# 5	951	H093- 24	712	H093- 63	598				
BRISCODE# 6	429	H093- 25	628	H093- 64	531				
BRISCODE# 7	490	H093- 26	803	H093- 65	793				
GC# 1	546	H093- 27	498	H093- 66	682				
GC# 2	599	H093- 28	507	H093- 67	837				
GC# 3	776	H093- 29	638	H093- 68	861				
GC# 4	525	H093- 30	546	H093- 69	696				
GC# 5	713	H093- 31	423	H093- 70	723				
GC# 6	902	H093- 32	649	H093- 71	788				
GC# 7	532	H093- 33	683	H093- 72	602				
GC# 9	533	H093- 34	695	H093- 73	806				
GC# 10	515	H093- 35	570	H093- 74	774				
GC# 11	566	H093- 36	727	H093- 75	661				
GC# 12	890	H093- 37	616	H093- 76	584				
GC# 13	796	H093- 38	613	H093- 77	630				
GC# 14	675	H093- 39	576	H093- 78	744				
H093- 1	884	H093- 40	655	H093- 79	842				
H093- 2	534	H093- 41	582	H093- 80	574				
H093- 3	653	H093- 42	729	H093- 81	740				
H093- 4	674	H093- 43	635	H093- 82	719				
H093- 5	477	H093- 44	1052	H093- 83	537				
H093- 6	629	H093- 45	675	H093- 84	469				
H093- 7	664	H093- 46	547	H093- 85	744				
H093- 8	767	H093- 47	756	TC 16 .E	1167				
H093- 9	673	H093- 48	584	TC 17 .E	764				
H093- 10	561	H093- 49	638	TC 18 .E	687				
H093- 11	590	H093- 50	588	TC 19 .E	764				
H093- 12	682	H093- 51	625	TC 20 .E	841				
H093- 13	597	H093- 52	723	TC 21 .E	988				
H093- 14	630	H093- 53	733	TC 22 .E	744				
H093- 15	780	H093- 54	569	TC 23 .E	721				
H093- 16	638	H093- 55	551	TC 24 .E	652				
H093- 17	613	H093- 56	593	TC 25 .E	608				
H093- 18	602	H093- 57	723	TC 26 .E	779				
H093- 19	582	H093- 58	521	TC 27 .E	792				

Min Limit 2 2 2 2 2 2
 Max Reported* 9999 9999 9999 9999 9999 9999
 Method ICP ICP ICP ICP ICP ICP

--=No Test, =Insufficient Sample S=Soil R=Rock C=Core L=Silt P=Pulp U=Undefined n=Estimate/1000 % =Estimate % Max=No Estimate
 Internatio Plasma Lab Ltd. 2036 Columbia St. Vancouver BC V5Y 3E1 Ph:604/879-7878 Fax:604/879-7898

SENIOR MOUNTAIN MINERALS 2-11-94 11:31 403328910- 604 95203811# 3



CERTIFICATE OF ANALYSIS
iPL 93J0103

250 Columbia Street
Vancouver, B.C.
Canada V5Y 3E1
Phone (604) 879-7878
Fax (604) 879-7898

Mountain Minerals Co Ltd

Out: Oct 07, 1993 Project: Ranchlands/Hobo/Brisco
In: Oct 01, 1993 Shipper: Steve Butrenchuk
PO#: Shipment: ID=C032801

103 Samples

0= Rock 103= Soil 0= Core 0=RC Ct 0= Pulp 0=Other
Raw Storage: -- 00Mon/Dis -- -- --
Pulp Storage: -- 12Mon/Dis -- -- --

{053812:53:11:39100793}
Mon=Month Dis=Discard
Rtn=Return Arc=Archive

Msg: Ba(Total Digestion/AAS)

Document Distribution

1 Mountain Minerals Co Ltd EN RT CC IN FX
Box 700 1 2 2 2 1
Lethbridge DL 3D 5D BT BL
AB TIJ 3Z6 0 0 0 1 0

ATT: Steve Butrenchuk Ph: 403/329-0443
Fx: 403/328-9110

Analytical Summary

##	Code	Met	Title	Limit	Limit	Units	Description	Element	##
		hod	Low High						
01	704P	ICP	Ba	2	9999	ppm	Ba ICP	Barium	01

✓=Envelope # RT=Report Style CC=Copies IN=Invoices FX=Fax(1=Yes 0=No)
=Download 3D= 2 Disk 5D=5-1/4 Disk BT=BBS Type BL=BBS(1=Yes 0=No)

Totals: () 2=Copy 2=Invoice 0=3-1/2 Disk 0=5-1/4 Disk

SENT BY: MOUNTAIN MINERALS
2-11-94
4033289110
604 95203811# 4



INTERNATIONAL PLASMA LABORATORY LTD.

CERTIFICATE OF ANALYSIS

iPL 93J0103

2036 Columbia Street
Vancouver, B.C.
Canada V5Y 3E1
Phone (604) 879-7878
Fax (604) 879-7898

SENT BY: MOUNTAIN MINERALS
2-11-94 11:32
40332891104
604 9520381# 5

Client: Mountain Minerals Co Ltd
Project: Ranchlands/Hobo/Brisco

iPL: 93J0103 M
103 Soil

Out: Oct 07, 1993
In: Oct 01, 1993

Page 1 of 3

Section 1 of 1
Certified BC Assayer: David Chiu

Sample Name	Ba ppm	Sample Name	Ba ppm	Sample Name	Ba ppm	Sample Name	Ba ppm	Sample Name	Ba ppm
Brisco# 8	460	H093 107	670	H093 146	553				
Brisco# 9	521	H093 108	710	H093 147	666				
Brisco# 10	557	H093 109	616	H093 148	644				
Brisco# 12	2337	H093 110	759	H093 149	653				
Brisco# 13	517	H093 111	760	H093 150	553				
Brisco# 14	474	H093 112	716	H093 151	727				
Brisco# 15	423	H093 113	812	H093 152	768				
Brisco# 16	474	H093 114	672	H093 153	572				
Brisco# 17	390	H093 115	678	H093 154	750				
Brisco# 18	406	H093 116	621	H093 155	623				
Brisco# 19	488	H093 117	616	H093 156	705				
Brisco# 20	442	H093 118	490	H093 157	683				
Brisco# 21	512	H093 119	713	H093 158	654				
Brisco# 22	718	H093 120	755	H093 159	616				
Brisco# 23	732	H093 121	677	H093 160	596				
Brisco# 24	835	H093 122	793	H093 161	721				
Brisco# 25	1086	H093 123	648	H093 162	707				
Brisco# 26	6830	H093 124	707	H093 163	567				
Brisco# 27	1091	H093 125	566	H093 164	681				
Brisco# 28	9553	H093 126	652	H093 165	627				
Brisco# 29	6667	H093 127	637	H093 166	591				
Brisco# 30	2005	H093 128	660	H093 167	716				
Brisco# 31	444	H093 129	594	H093 168	746				
Brisco# 32	432	H093 130	586	H093 169	574				
Brisco# 33	528	H093 131	944	H093 170	752				
Brisco# 34	506	H093 132	611						
Brisco# 35	616	H093 133	558						
Brisco# 36	599	H093 134	564						
Brisco# 37	463	H093 135	689						
Brisco# 38	564	H093 136	733						
Brisco# 39	523	H093 137	694						
Brisco# 40	441	H093 138	596						
H093 100	818	H093 139	557						
H093 101	647	H093 140	554						
H093 102	566	H093 141	657						
H093 103	630	H093 142	600						
H093 104	774	H093 143	663						
H093 105	594	H093 144	776						
H093 106	719	H093 145	708						

Nin Limit	2	2	2	2	2	2
Max Reported*	9999	9999	9999	9999	9999	9999
Method	ICP	ICP	ICP	ICP	ICP	ICP

—No Test 1=Insufficient Sample S=Soil R=Rock C=Core L=Silt P=Pulp U=Undefined —Estimate/1000 X=Estimate % Max=No Estimate
 International Plasma Lab Ltd. 2036 Columbia St. Vancouver BC V5Y 3E1 Ph: 604/879-7878 Fax: 604/879-7898



CERTIFICATE OF ANALYSIS
iPL 93J0602

2036 Columbia Street
Vancouver, B.C.
Canada V5Y 3E1
Phone (604) 879-7878
Fax (604) 879-7898

Mountain Minerals Co Ltd

Out: Oct 07, 1993 Project: H0B0
In: Oct 06, 1993 Shipper: Steve Butrenchuk
PO#: Shipment: ID=0032801

14 Samples

0= Rock 14= Soil 0= Core 0=RC Ct 0= Pulp 0=Other
Raw Storage: -- 00Mon/Dis -- -- --
Pulp Storage: -- 12Mon/Dis -- -- --

[055012:49:36:39100793]
Mon=Month Dis=Discard
Rtn=Return Arc=Archive

Msg: Ba Total Digestion

Msg:

Document Distribution

1 Mountain Minerals Co Ltd EN RT CC IN FX
Box 700 1 2 2 2 1
Lethbridge DL 3D 5D BT BL
AB T1J 3Z6 0 0 0 1 0

ATT: Steve Butrenchuk

Ph:403/329-0443
Fx:403/328-9110

Analytical Summary

##	Code	Met	Title	Limit	Limit	Units	Description	Element	##
		hod	Low High						
01	704P	ICP	Ba	2	9999	ppm	Ba ICP	Barium	01

EN=Envelope # RT=Report Style CC=Copies IN=Invoices FX=Fax(1=Yes 0=No)
DL=Download 3 1/2 Disk SD=5-1/4 Disk BT=BBS Type BL=BBS(1=Yes 0=No)

Total () 2=Copy 2=Invoice 0=3-1/2 Disk 0=5-1/4 Disk

SENI BY: MOUNTAIN MINERALS
2-11-94 11:32
4033289110-
604 95203811# 6



CERTIFICATE OF ANALYSIS
iPL 93J0602

2036 Columbia Street
Vancouver, B.C.
Canada V5Y 3E1
Phone (604) 879-7878
Fax (604) 879-7898

Client: Mountain Minerals Co Ltd
Project: H080 14 Soil

iPL: 93J0602 M

Out: Oct 07, 1993
In: Oct 06, 1993

Page 1 of 1

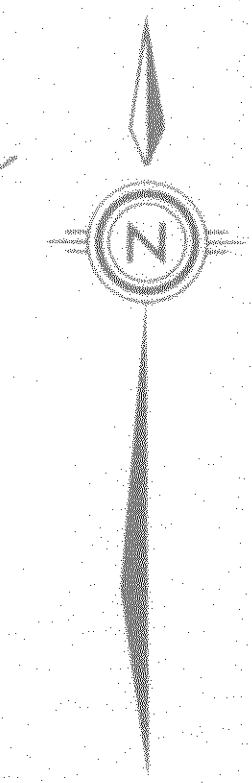
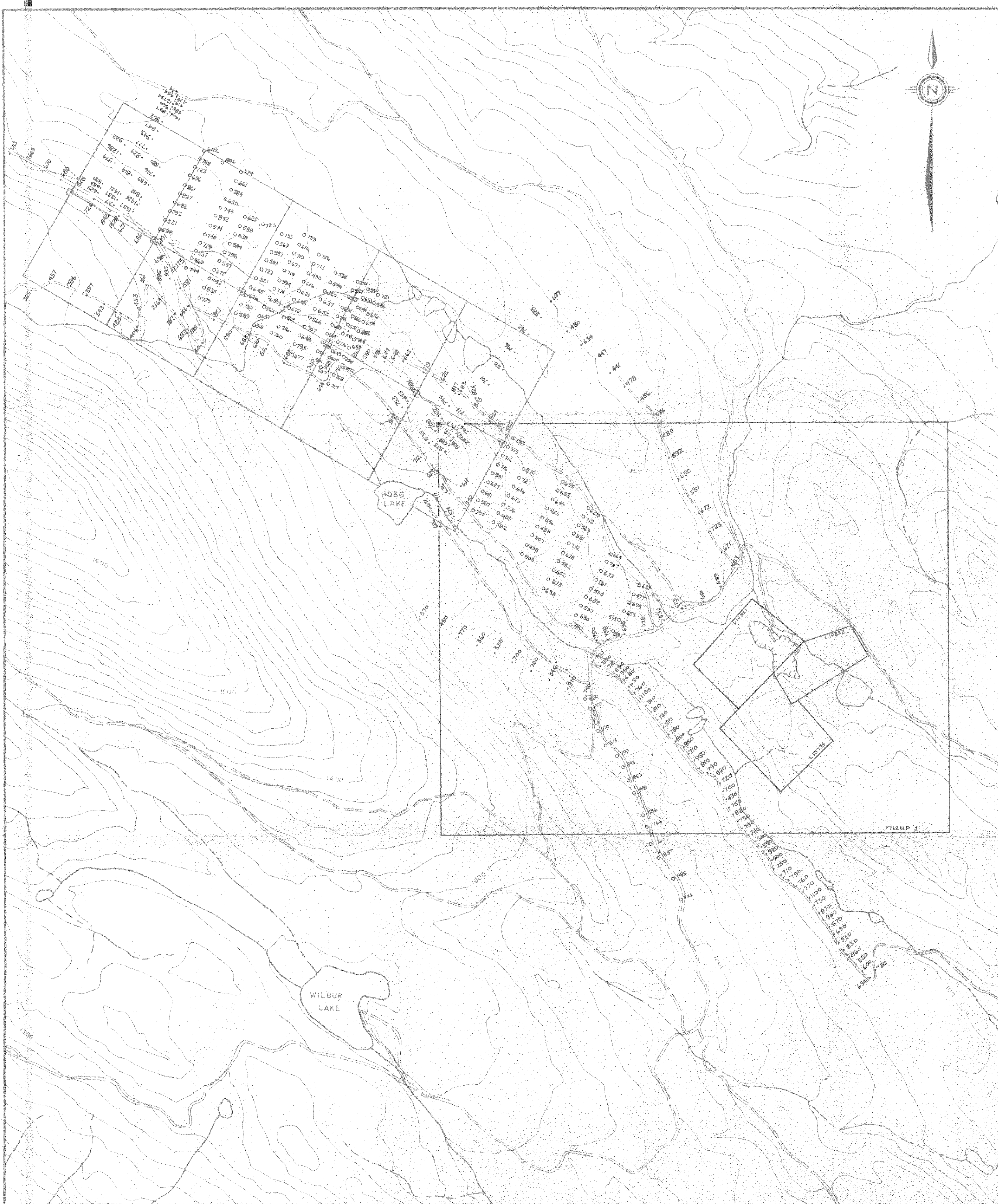
Section 1 of 1
Certified BC Assayer: David Chiu

Sample Name	Ba ppm	Sample Name	Ba ppm	Sample Name	Ba ppm	Sample Name	Ba ppm	Sample Name	Ba ppm
HO 93 171	660								
HO 93 172	677								
HO 93 173	710								
HO 93 174	813								
HO 93 175	799								
HO 93 176	843								
HO 93 177	863								
HO 93 178	918								
HO 93 179	556								
HO 93 180	766								
HO 93 181	767								
HO 93 182	837								
HO 93 183	885								
HO 93 184	744								

Min Limit	2	2	2	2	2	2
Max Reported*	9999	9999	9999	9999	9999	9999
Method	ICP	ICP	ICP	ICP	ICP	ICP

---No Test Ins=Insufficient Sample S=Soil R=Rock C=Core L=Silt P=Pulp U=Undefined e=Estimate/1000 Z=Estimate X Max=No Estimate
 International Plasma Lab Ltd. 2036 Columbia St. Vancouver BC V5Y 3E1 Ph: 604/879-7878 Fax: 604/879-7898

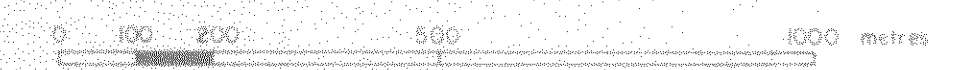
SENT BY: MOUNTAIN MINERALS ; 2-11-94 ; 11:32 ; 4033289110- 604 99203811# 7



- 1992 Sample location
- 1993 Sample location

GEOLOGICAL BRANCH
ASSESSMENT REPORT

23,075



MOUNTAIN MINERALS CO. LTD. 714 - 5 Ave S, LETHBRIDGE, ALBERTA. T1J 0V1, 329-0443	
HOBO - FILLUP CLAIMS GEOCHEMISTRY - BARITE	
SCALE 1:10000	DESIGN BY
DATE OCTOBER, 1992	REVISED OCTOBER, 1993
DRAWN BY SBB	DRAWING NO. 3