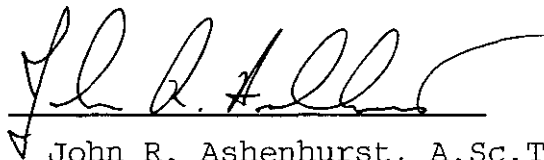


APPENDIX I

STATEMENT OF QUALIFICATIONS

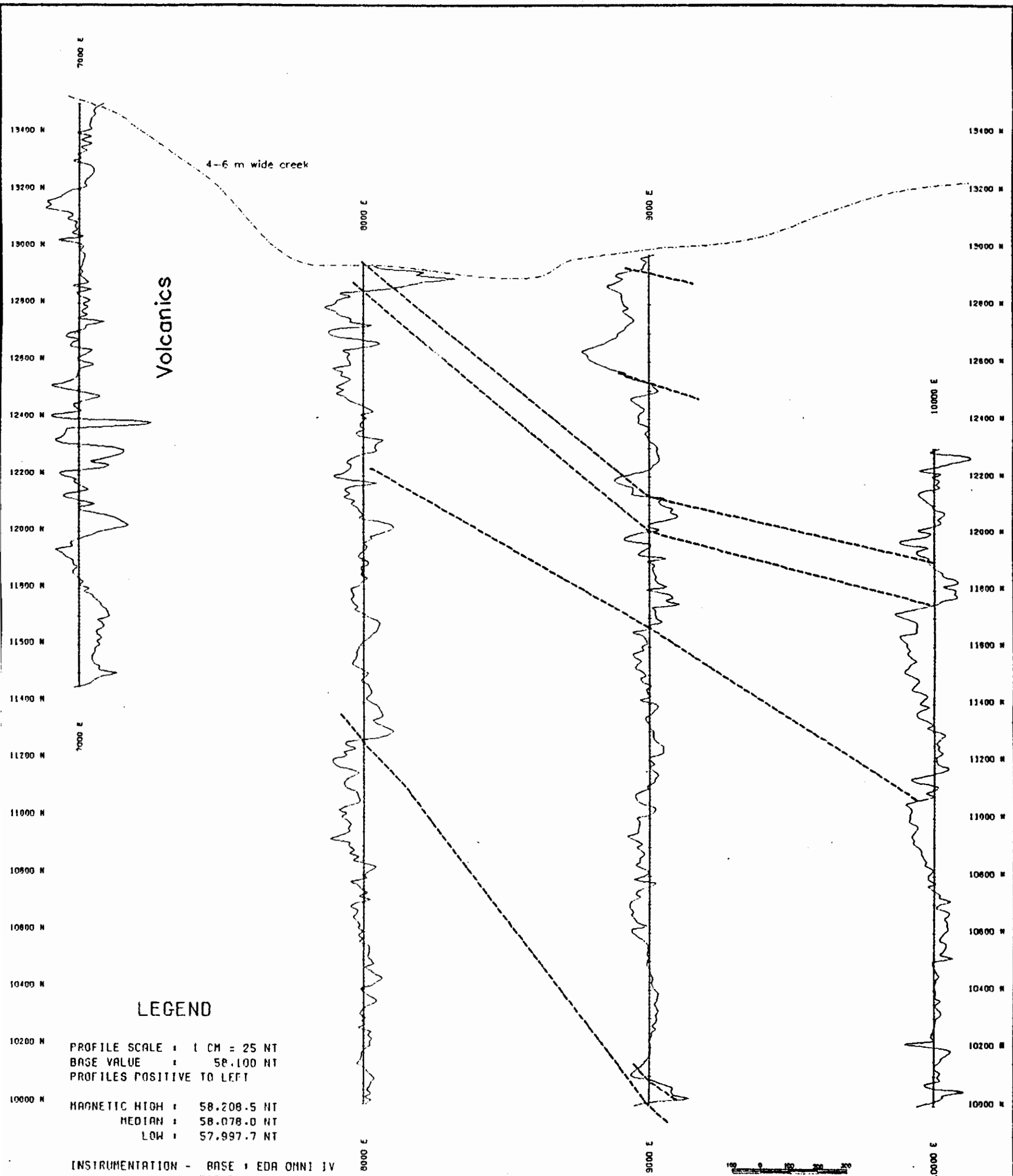
I, John R. Ashenhurst, of 13771-114A Avenue, Surrey, British Columbia, hereby certify that :

- 1) I am a graduate of the Haileybury School of Mines, Northern College of Arts and Technology, 1974, where I obtained two diplomas in Mining Technology.
- 2) I have been engaged in mining since 1966 and mineral exploration since 1971.
- 3) I am a technologist and member of the Applied Science Technicians and Technologists Association of British Columbia.
- 4) This report is compiled from data obtained by myself from a Magnetism survey conducted by SJ Geophysics Ltd.

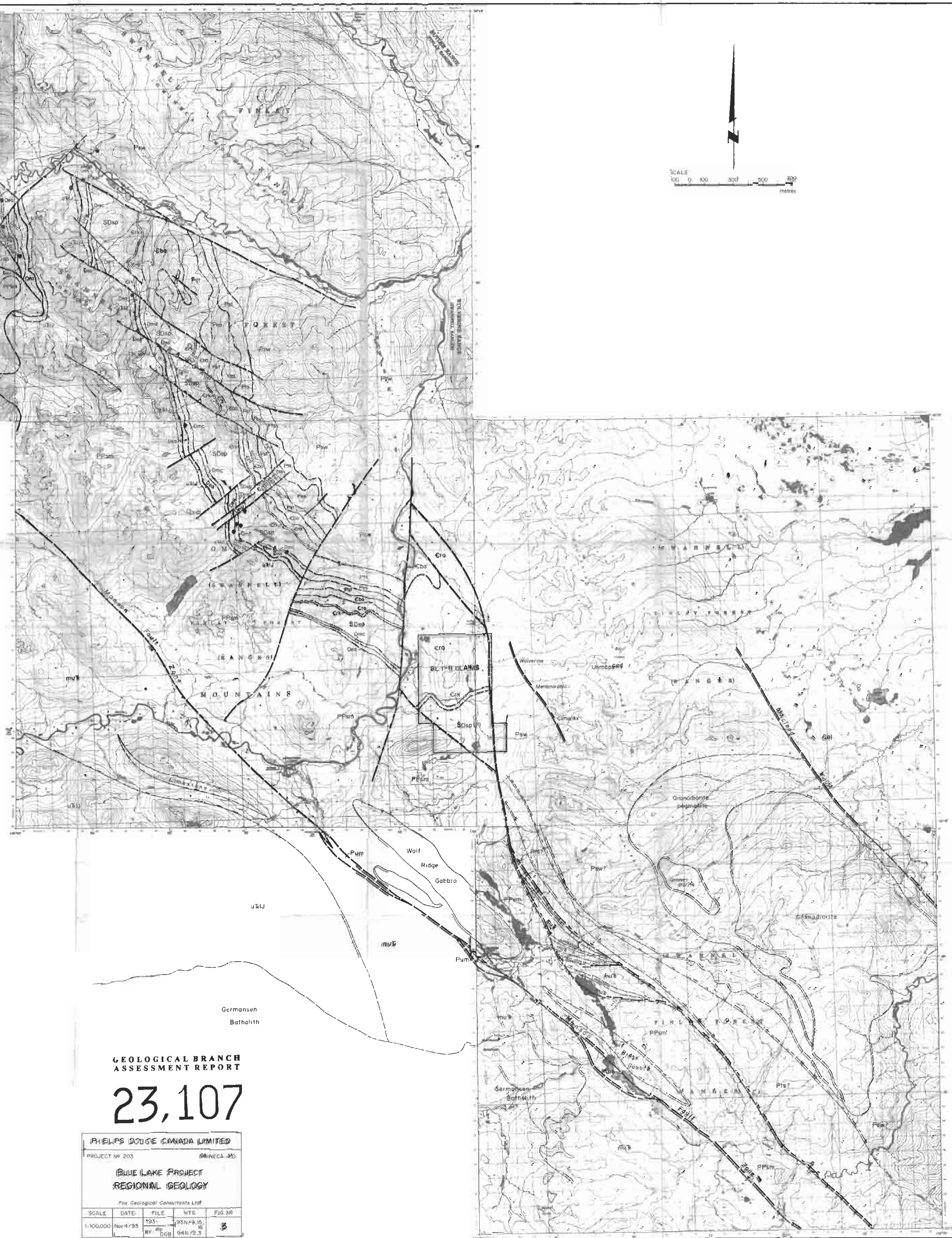
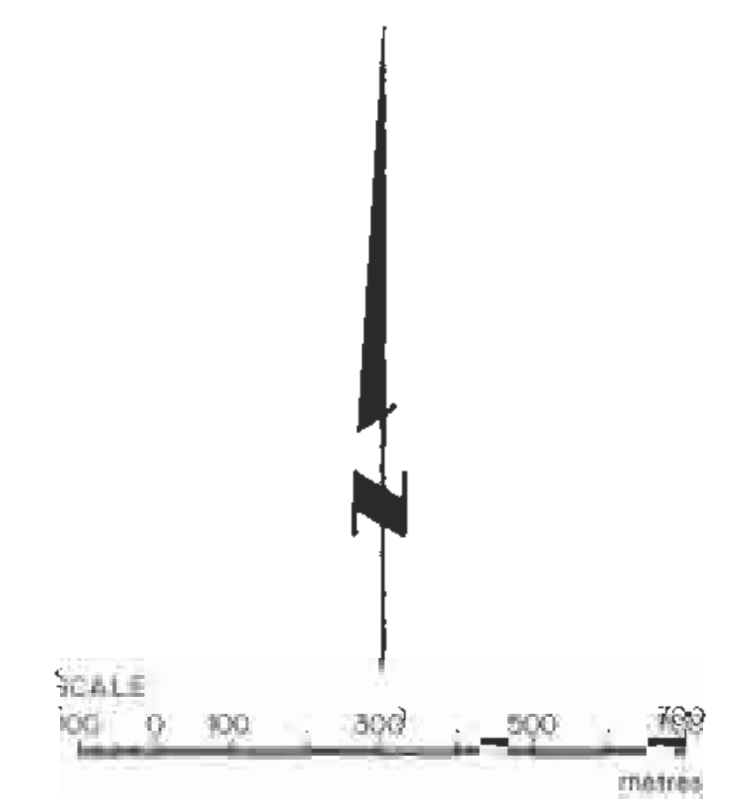


John R. Ashenhurst, A.Sc.T.

Mining / Geophysical Technologist







**WASI LAKE - MANSON RIVER  
GEOLOGY**

- POST-ACCRETION  
OVERLAP ASSEMBLAGE**
- QUATERNARY**
  - Qol** Glacial, fluvioglacial and fluvial silt, sand and gravel
  - TERTIARY**
  - Td** Grey and brown basalt flows and breccia
- 
- MESOZOIC**
- CRETACEOUS**
- SASTOT GROUP**- Ks** Conglomerate and sandstone, minor shale, some coal measures

**THIASIC-JURASSIC**

**YAKLA GROUP**- uRiJ** Green, grey and mafic pyroxene-hornblende basaltic breccia and tuff, tuffaceous sandstone and siltstone
- muR** Dark grey shale, siltstone and sandstone, basaltic tuff interbeds, limestone and calcareous sandstone

---

**PALAEZOIC**

**MISSISSIPPIAN - PERMIAN**

- Pum** Undifferentiated ultramafics (Crooked Asphobites)

**LAY RANGE ASSEMBLAGE**- MPir** Argillite, shale and siltstone; basaltic breccia, tuff and pillow lavas; gabbro and serpentinite

**SLIDE MOUNTAIN TERRANE**- PPam** Argillite, metabasalt, serpentinite and gabbro (undifferentiated)
- PPmu** Serpentinized peridotite and pyroxene

---

**DEVONIAN - MISSISSIPPIAN**

- DMc?** Canal Fm. or Besa River Fm.: Dark grey shale and siltstone, minor limestone
- Dea** Eau Group (Big Creek Group): Shale, argillite and siltstone
- DMc** McName Group (Cutter Lake Group): Medium to light grey limestone and dolomite

**SILURIAN - DEVONIAN**

- SDsp** Sandpile Group (Echo Lake Group): Medium to light grey limestone and dolomite; graphitic argillite and argillaceous limestone

---

**CAMBRIAN - ORDOVICIAN**

- CrA** Road River Group (Reckha Group, Raxabock Group): Dark grey argillite and siltstone
- CrB** Koon Group, Koseria Fm. (Mount Kison Fm.): Grey and white limestone
- Ebo** Baya Fm. (Mount Brown Fm.): Quartzite, grading upwards into shale and siltstone

---

**PROTEROZOIC**

- Pst** Ingankwa Group, Shekwa Fm.: Phyllite, muscovite quartzite and argillaceous limestone; graphitic siltstone and shale
- Pes** Espee Fm.: white to light grey limestone and dolomite, commonly thin bedded
- Pts** Tsayzi Fm.: Metabased grey limestone and siltstone
- Psw** Swannell Fm.: Sandstone, siltstone, quartzite

- SYMBOLS**
- Biological boundary, approximate
  - Fault
  - Thrust fault
  - Mineral leopards
  - Minite Pb-Zn occurrence

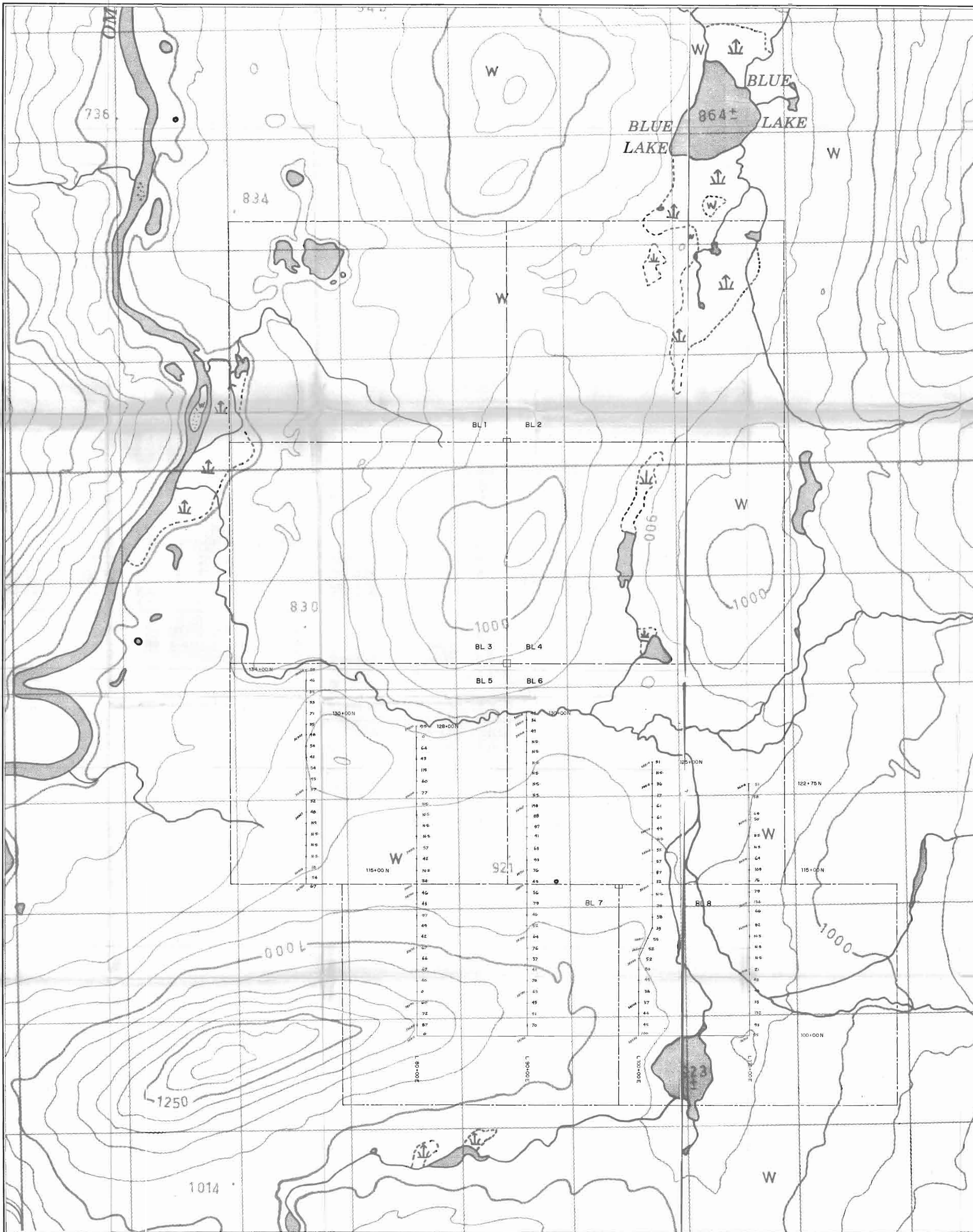
Compilation by D.G. Barry, 1992

**GEOLOGICAL BRANCH  
ASSESSMENT REPORT**

**23,107**

PHELPS DODGE CANADA LIMITED				
PROJECT NO. 203		99INECA-MD		
BLUE LAKE PROJECT REGIONAL GEOLOGY				
Fox Geological Consultants Ltd.				
SCALE	DATE	FILE	NOTE	FIG. NO.
1:100,000	Nov 4/95	193-	2317/9.15	5
		By: MJP	04/4/95	





SCALE 1:10,000  
0 500 1000  
metres

44- Sample number, Geometrical value and location  
NS- No sample taken

BL 2 Chain boundary, Chain name, LCC

GEOLOGICAL BRANCH  
ASSESSMENT REPORT

23,107

PRELPS DODGE CANADA LIMITED			
PROJECT NO 251		GEMMECA M.D.	
BL PROJECT			
SOIL GEOCHEMISTRY			
Zn in ppm			
SCALE	DATE	FILE	NTS NO
1:10,000	2003	203-	02/15/06
		BY: PD	DWG NO
			4