

FILMED

LOG NO:	JUL 14 1994	RD.
ACTION:		
FILE NO:		

DIAMOND DRILL REPORT
INDIGO CLAIMS
NTS# 82F/1E
(Lat.49°14' ; Long.116°07')
(Nelson Mining Division)

Report for: A.Whaley
"This Ol'Creek Mining Inc."
SS#1 - Site 13,
P.O. Box 127,
Cranbrook, B.C. VIC 4H4
Ph.(604)426-2064

Report By: G.M.Rodgers, P.Eng..
P.O.Box 63,
Skookumchuck, B.C. VOB 2E0
Ph.(604)422-3748

July 1, 1994

GEOLOGICAL BRANCH
ASSESSMENT REPORT

23, 10

TABLE OF CONTENTS

	page
1.0 INTRODUCTION	
1.1 Location and Access	1
1.2 Claim Status	1
1.3 History / Previous Work	1
1.4 References	1
2.0 REGIONAL GEOLOGY	6
3.0 LOCAL GEOLOGY	6
4.0 DIAMOND DRILLING	8
4.1 Diamond Drill Logs	11
5.0 CONCLUSIONS and RECOMMENDATIONS	8
CERTIFICATE	9
STATEMENT OF COSTS	10
Table 1(Claim Tenure Information)	3
Fig.3 (Claim Map) , scale = 1:31,680	4
Fig.2 (Location Map),scale= 1:50,000	5
Fig.4 (Geology Map),scale= 1:20,000	7
Diamond Drill Logs11

1.0 INTRODUCTION

1.1 Location and Access

The Indigo claim group is located on the east fork of Kid Creek, north-west of Yahk, B.C..The property is accessed via excellent gravel road which departs highway#3 15km west of Yahk, B.C..At 12 km one crosses the new bridge then takes the East Fork road for 3.1km, then the North fork for 3.9km. A rough 4*4 road leads north 0.5km past this last junction and then west to the drill site. The drill site is located at elev.1676 meters (see figs.1&2).

1.2 Claim Status

The 25 two post claims called the Indigo 1-25 cover the drill area and are grouped as the Indigo group. Table #1 details claim tenure information see also fig.3, claim map)

1.3 Previous Work

No history or previous work is known for the area and no old workings are known to exist nearby.

1.4 References

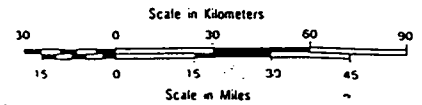
Edmunds,R.F.,1977.Kimberley to Creston, Stratigraphy and Lithology of the Lower Belt Series in the Purcell Mountains, B.C..in Hoy et al,Lead-Zinc deposits of Southeastern B.C.. Geological Association of Canada, Field trip#1 Guidebook,p.22-32.

Hoy,T.,1982. The Purcell Supergroup in Southeastern B.C..Sedimentation, Tectonics and Stratiform Lead-Zinc Deposits, in:"Precambrian Sulphide Deposits". Geological Association of Canada Special Paper #25 pp.127-147.

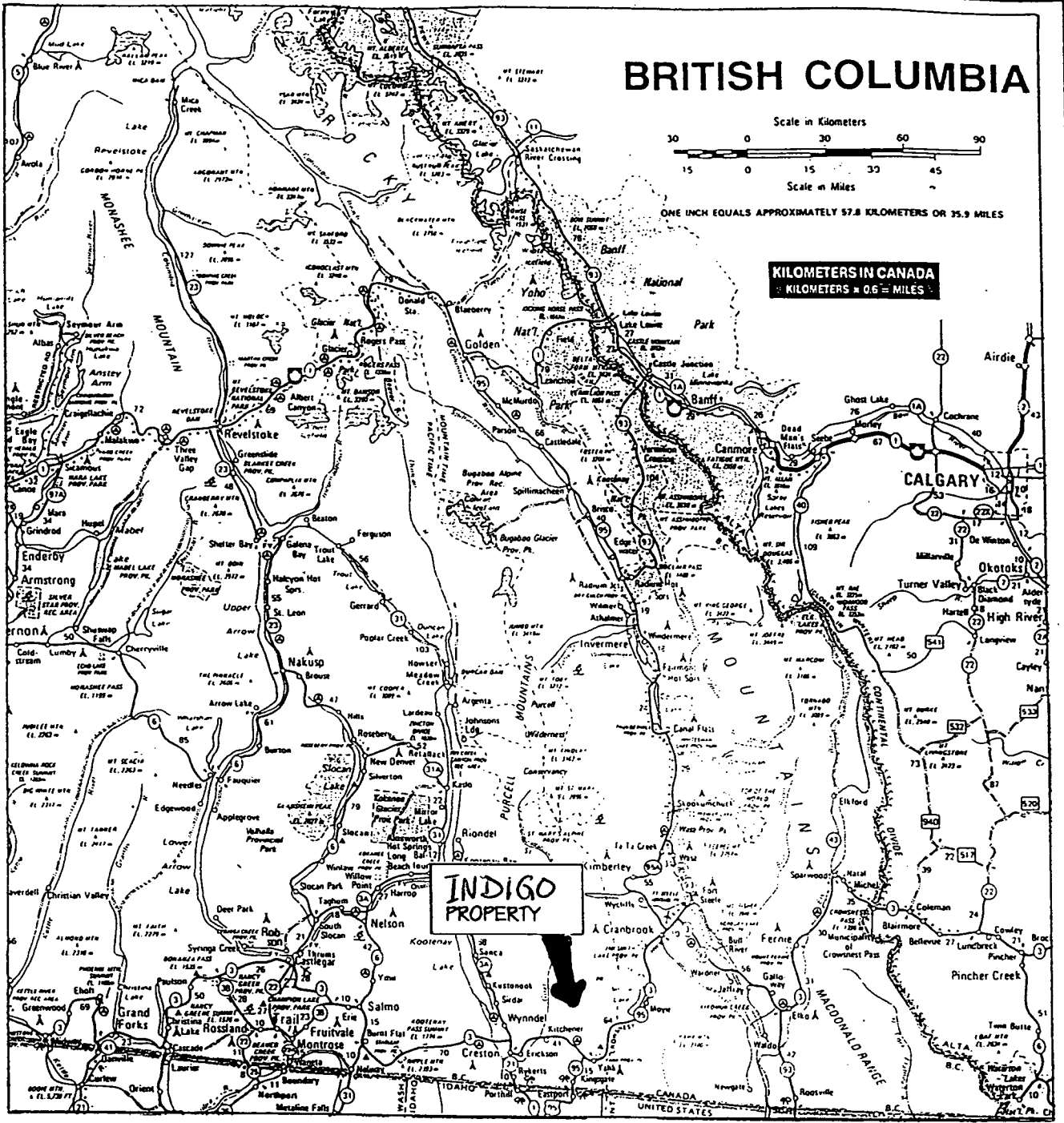
Hoy,T.,1984. Geology of the Cranbrook Sheet and Sullivan Mine Area, B.C.. B.C.M.E.M.P.R. Preliminary Map#54

Rice,H.M.A.,1940. Nelson Map Area, East Half, B.C., G.S.C. memoir#228.

BRITISH COLUMBIA



KILOMETERS IN CANADA
 KILOMETERS = 0.6 = MILES



INDIGO PROPERTY

<h2>INDIGO PROPERTY</h2>		
<h1>PROPERTY LOCATION MAP</h1>		
Scale as shown	Date	Figure

Table 1

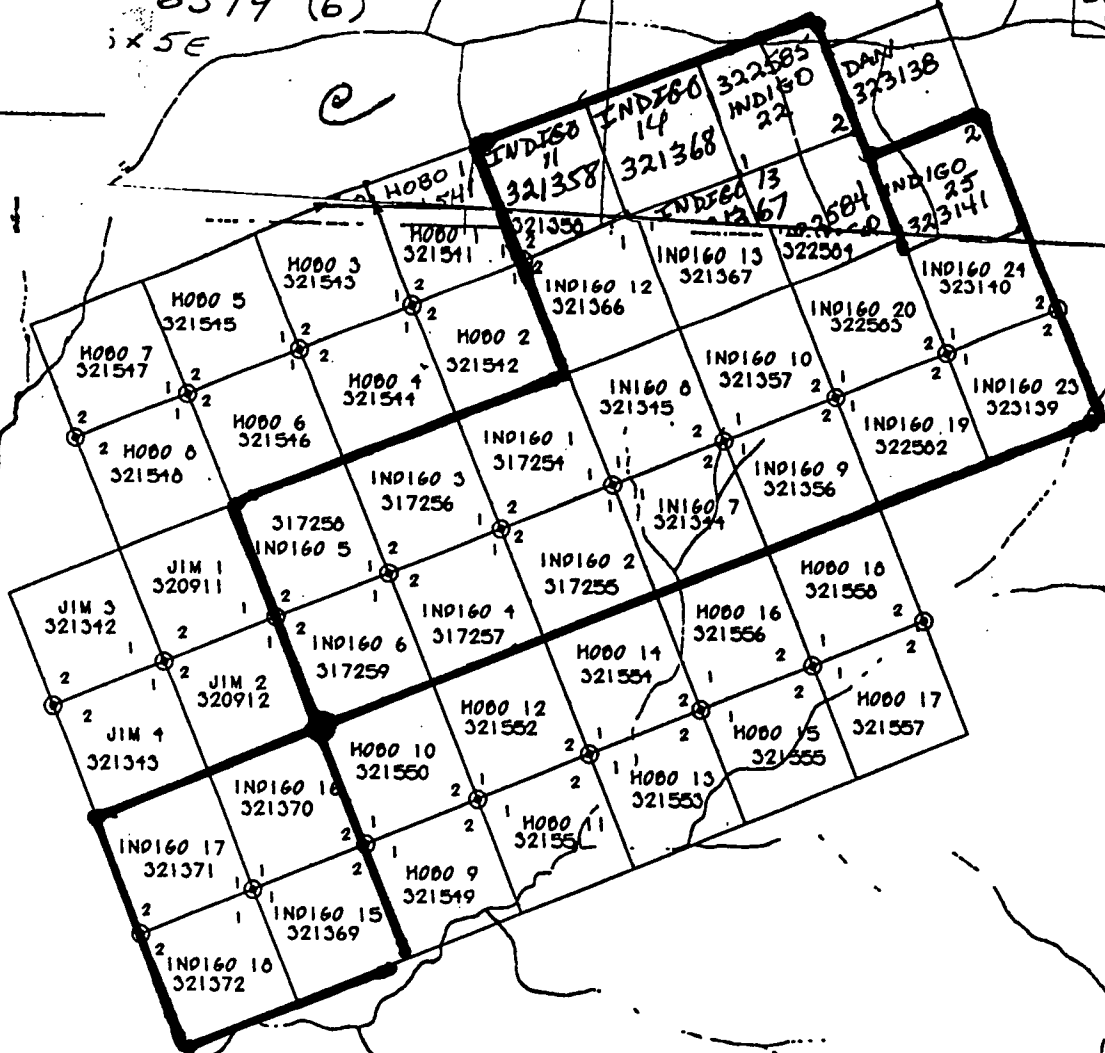
Claim name	Tenure number	Expiry date
Indigo 1	317254	03-May-99
Indigo 2	317255	03-May-99
Indigo 3	317256	03-May-99
Indigo 4	317257	03-May-99
Indigo 5	317258	03-May-99
Indigo 6	317259	03-May-99
Indigo 7	321344	18-Sep-99
Indigo 8	321345	18-Sep-99
Indigo 9	321356	19-Sep-99
Indigo 10	321357	19-Sep-99
Indigo 11	321358	25-Sep-99
Indigo 12	321366	25-Sep-99
Indigo 13	321367	22-Sep-99
Indigo 14	321368	22-Sep-99
Indigo 15	321369	01-Oct-99
Indigo 16	321370	01-Oct-99
Indigo 17	321371	25-Sep-99
Indigo 18	321372	25-Sep-99
Indigo 19	322582	02-Nov-99
Indigo 20	322583	02-Nov-99
Indigo 21	322584	03-Nov-99
Indigo 22	322585	03-Nov-99
Indigo 23	323139	29-Dec-99
Indigo 24	323140	29-Dec-99
Indigo 25	323141	29-Dec-99

YEKO 10
6377 (6)
4N x 5E

10190
10192

YEKO 12
6379 (6)
4N x 5E

6533 (7)	6531 (7)	PANDA 474
6534 (7)	6532 (7)	PANDA 474



NELSON M.D.
WEELE M.D.

FIGURE #3
CLAIM MAP
Scale = 1:31,680

60 10' 61 62 63 64 65 66 05' 67 68 69

DIAMOND DRILL HOLE #93-1

BLOCK A

N

YAHK
KID CREEK ROAD

L4592

FIGURE #2
LOCATION MAP
Scale = 1:50,000

BLOCK B

YAHK, B.C.
* (4 km)

2.0 REGIONAL GEOLOGY

The Indigo property is underlain by the Aldridge Formation which is a member of the Precambrian Purcell Supergroup. The middle Proterozoic Purcell Supergroup is a thick succession of fine-grained clastic and carbonate sedimentary rocks. These rocks are believed to have been deposited in an epicratonic re-entrant of a sea that extended along the western edge of the North American Precambrian Craton.

The Aldridge Formation is the oldest member of the Purcell Supergroup and is composed principally of a thick sequence of fine-grained siliclastic rocks deposited largely by turbidity currents. The Aldridge Formation is overlain by shallow-water deltaic clastics of the Creston Formation (not exposed on the Indigo property).

The Lower Aldridge Formation is principally thin to medium bedded meta-siltite, interbedded phyllitic siltite, phyllitic argillite and / or muscovite schist.

The Medium Aldridge Formation is composed of medium to thick bedded meta-siltstone, minor quartz arenite interbedded with thin - laminated siltites, argillites and minor muscovite schist.

The Upper Aldridge Formation is a uniform sequence of thin to medium bedded quartzites with various amounts of interbedded argillite and argillaceous quartzite.

Gabbroic sills are common throughout the Aldridge and are also found in the Creston Formation. These sills range in thickness from 1 - 170 meters and are typically thick to coarsely crystalline with crystal size diminishing towards the contacts.

3.0 LOCAL GEOLOGY

The Indigo property contains very few exposures of bedrock. In the vicinity of the drill hole (see fig.4) the logging roadcut exposes medium bedded quartzites, thin-bedded argillite and quartz wacke of the Middle Aldridge Formation. Bedding plane attitudes are mostly flat lying (10-20° east or north). No mineralization of note is present in these outcrops however previous soil sampling done during 1993 indicated anomalously high mercury concentrations in soil.

Figure 2 shows outcrop locations and geology.

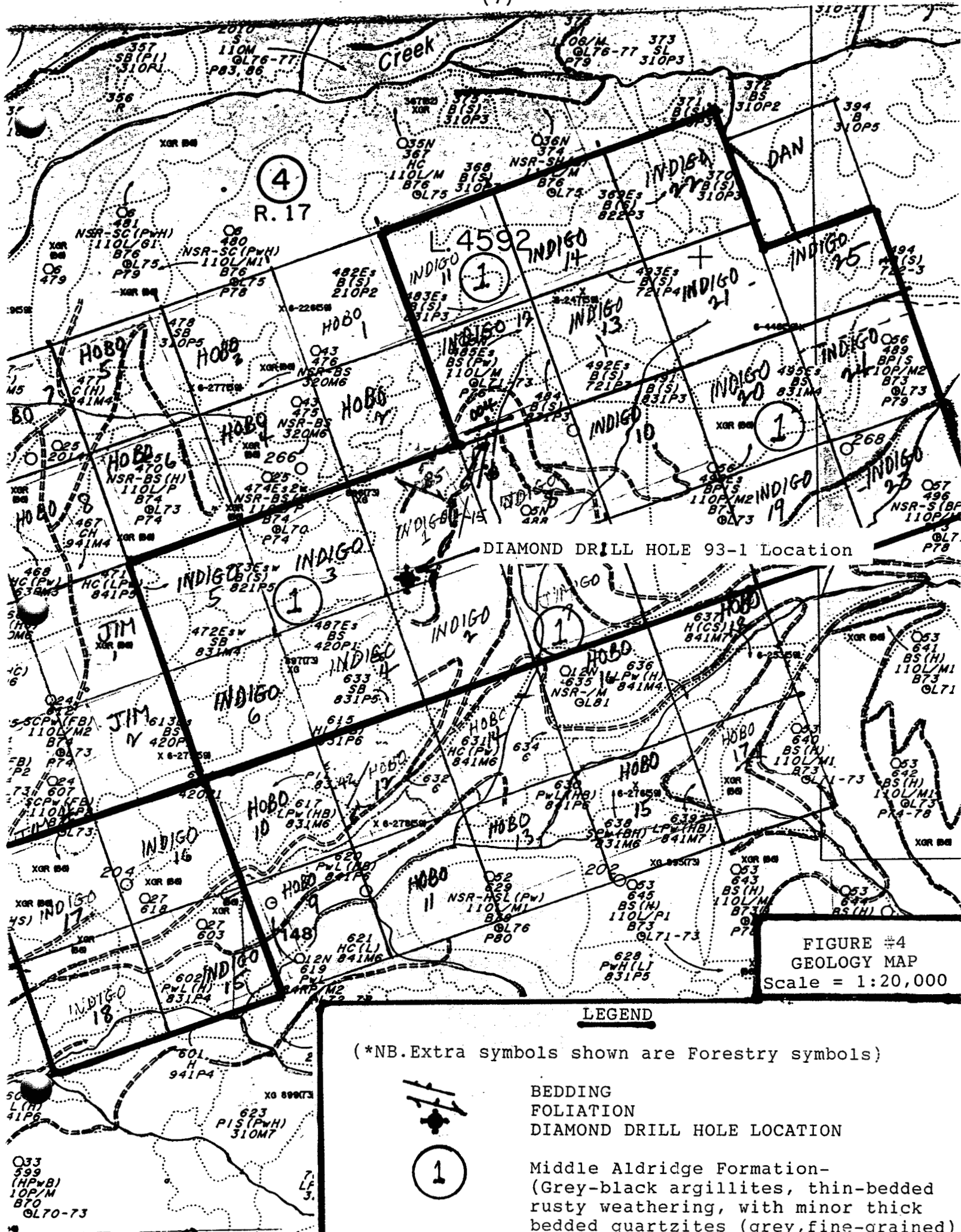


FIGURE #4
GEOLOGY MAP
Scale = 1:20,000

LEGEND

(*NB. Extra symbols shown are Forestry symbols)

- BEDDING
- FOLIATION
- DIAMOND DRILL HOLE LOCATION

Middle Aldridge Formation-
(Grey-black argillites, thin-bedded
rusty weathering, with minor thick
bedded quartzites (grey, fine-grained)

4.0 DIAMOND DRILLING

During 1993, 274 meters of NQ diamond drilling was done by Lone Ranger Diamond Drilling Ltd. of Lumby, B.C. (Ph. (604) 547-6839). Figure 2 shows drill hole location.

The diamond drill hole (#93-1) was collared in Middle Aldridge Formation sediments. The presence of two varve type marker beds, one located at 43.5-43.8 meters and another at 152.0-152.7 meters, indicate that the hole was collared in Middle Aldridge sediments 860 meters above the Sullivan Horizon (not including any gabbro sills that may be present). The Sullivan Horizon hosts the world class Sullivan mine located at Kimberely, B.C. which has contained 160 million tonnes of 6.8% Pb, 5.9% Zn and 2.4 oz/t Ag.

Drill core is stored at the home of A. Whaley, Cranbrook, B.C..

4.1 Diamond Drill Logs (appended)

5.0 CONCLUSIONS / RECOMMENDATIONS

Soil sampling done during 1993 indicated anomalously high mercury values in the vicinity of the drill hole #93-1. No Sullivan syle indicators exist in outcrop or in drill core on the property although tourmaline float has been located in the creek bottom to the east (A. Whaley, personal communication). Until further soil sampling or a geophysical survey indicates an anomalous condition no further drilling is recommended on the property.

CERTIFICATE

I, Glen M. Rodgers of Skookumchuck, B.C., hereby certify as follows:

1) I am a consulting Geological Engineer presently registered with the Association of Professional Engineers and Geoscientists of British Columbia.

2) I graduated from the University of Manitoba in 1977 with a bachelor's degree in Geological Engineering.

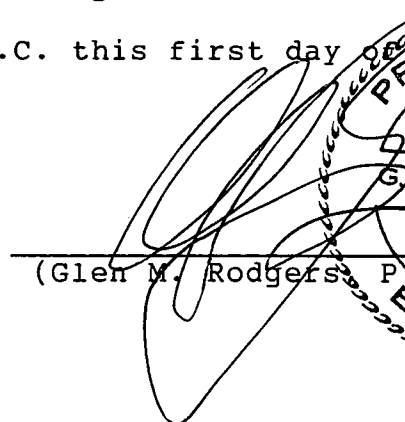
3) Since graduation, I have practised my profession continuously in Western Canada, Yukon and Northwest Territories, Alaska and Central America.

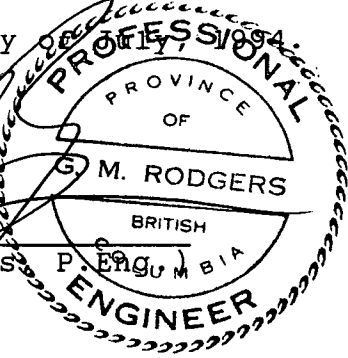
4) I am a principal of Kootenay Geo-Services, a proprietorship registered in Victoria, B.C.. The office and records of Kootenay Geo-Services are located at Sheep Creek Road, P.O.Box 63, Skookumchuck, B.C.V0B 2E0.

5) I have been familiar with Aldridge Formation sediments and Sullivan style mineralization since 1978. I have personally examined outcrops and drill core on the Indigo claims.

6) I do not hold any shares in This O'1 Creek Mining Inc. nor do I expect to receive any as a result of writing this report. I do not hold any interest in any mineral claims within 10 km of the Indigo claims.

Dated at Cranbrook, B.C. this first day of ~~July~~ ^{August} 1994.


(Glen M. Rodgers, P. Eng.)



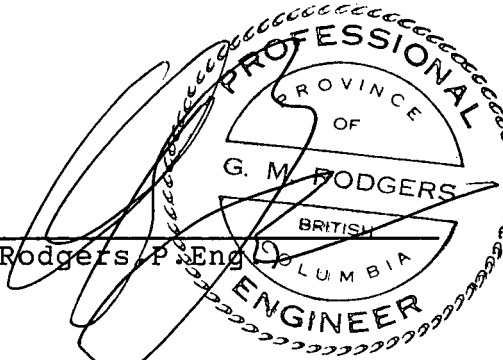
The seal is circular with a serrated border. The text inside the seal reads: 'PROFESSIONAL ENGINEER' around the top and bottom edges, 'PROVINCE OF BRITISH COLUMBIA' in the center, and 'G. M. RODGERS' in the middle. The seal is partially obscured by the signature.

STATEMENT OF COSTS

Diamond Drilling
(Lone Ranger Diamond Drilling Ltd. . . \$19,344.89
(274 METERS) GR
Kootenay Geo-Services (G.Rodgers, P.Eng.)
(core logging, mapping, report) . . . \$ 675.00

TOTAL EXPENSES INCURRED = \$20,019.89

-Certified as a true statement of costs incurred

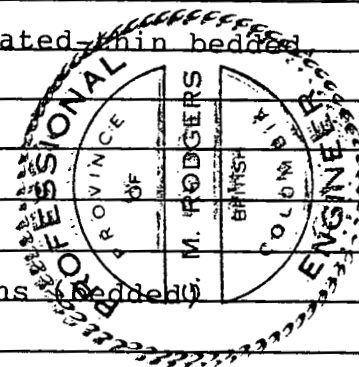

(G.M. Rodgers, P.Eng.)

Drill Hole Record

*NO ASSAYS TAKEN (CR)

Property	INDIGO	District	NELSON	Hole No.	93-1
Commenced		Location	E. KID CREEK	Tests at	Hor. Comp.
Completed		Core Size	NQ	Corr. Dip	Vertical
Co-ordinates				True Brg.	Logged by GMR
Objective	Test mercury anomaly			% Recov.	95%
				Date	Dec 93

Footage meters		Description
From	To	
0	30	sediments belonging to the Middle Aldridge Formation.
		<u>Siltstone</u> ; thin-med. bedded, rusty weathering (first 24m exhibits surface oxidization), lenticular interbeds, tan-rusty v. fine grained with argillaceous tops.
		core angle = 80° overall
30	41	<u>Quartz Wacke</u> ; grey, med.-thick bedded, local salmon-pink feldspathic clasts in patchy albitic zones (minor)
41	52	<u>Argillaceous Siltstone</u> / Silty Argillite; occ. thinly laminated thin bedded minor grey quartz wacke (argillaceous quartzite).
		40.7m; 10cm fault zone with gouge and mylotinized quartz
		thin bedded argillite with darker tops (fining upwards) (possible varve marker at 43.5-43.8m)
		44.0-45.0m- highly fractured, occ. Py, Po on fine laminations (bedded)
		core angle = 80° overall
52	151	<u>Quartz Arenite</u> ; grey, fine-grained, fining upward, minor thin bedded quartz wacke / argillaceous quartzite interbeds, sporadic Py, Po concentrations (less than 1%)
		49m, 4 cm quartz vein (20° to core)
		occ. minor Py on fract's and lenticular feldspathic clasts with chloritic
		, albitic alteration with pink feldspathic clasts.
		87m, small scale folding (λ=3cm)



Drill Hole Record

*NO ASSAYS TAKEN (62)

INDIGO

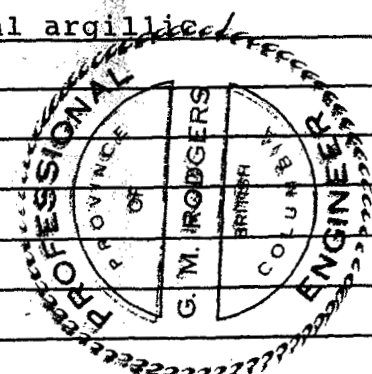
NELSON

93-1

Property	District	Hole No.
Commenced	Location	Tests at
Completed	Core Size	Corr. Dip
Co-ordinates		True Brg.
Objective		% Recov.

INDIGO NELSON 93-1
 Location E. KID CREEK Tests at
 Core Size NQ Corr. Dip VERTICAL
 True Brg. Logged by
 Test Mercury Anomaly % Recov. 95% Date

Footage From	meter To	Description	Si No
		Middle Aldridge sediments	
151	168	Quartz Wacke, grey, thin bedded, occasional flute casts, light tops, pyrite is finely disseminated (loc.1%), common thin bedded argillite laminations (pos.varve marker at 152.0-152.7m)	
168	218	Quartz Arenite, grey with minor dark grey silty laminations, Pyrite and biotite common on laminations, patchy argillic alteration common.	
256	274	Quartz Arenite (same as previous) massive - thick bedded, local argillic chloritic alteration with pink-salmon feldspathic clasts	
274 meters		xxxxxxxxxxxxxxxxxxxx End of Hole xxxxxxxxxxxxxxxxxxxx	



(page 12)