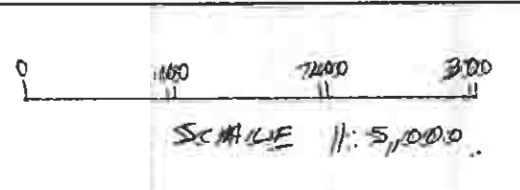
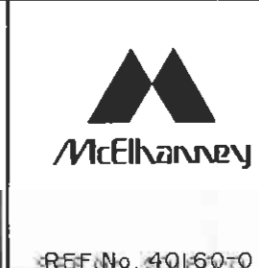
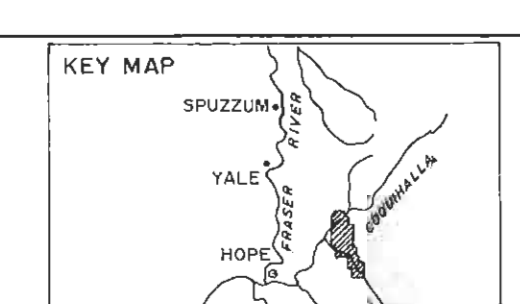
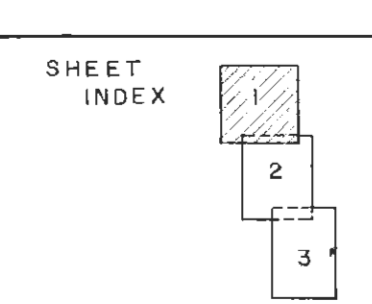


GEOLOGICAL BRANCH
ASSESSMENT REPORT
23,483



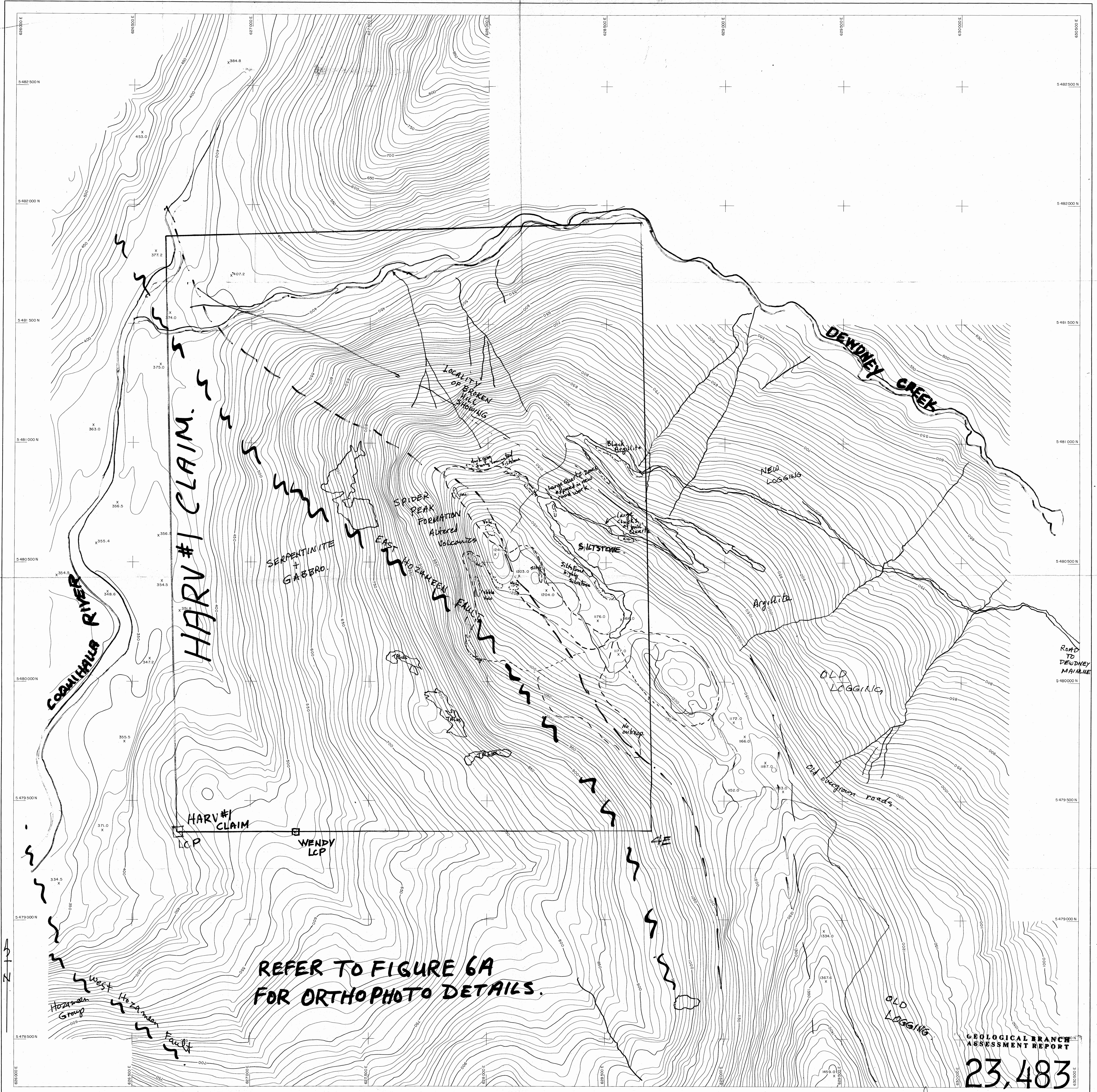
To Accompany Assessment Report on the HARV #1 CLAIM
by J. T. SHEARER, P. Geo, dated June 15 1994.



THE McELVANNEY GROUP LTD.
1156 AILEY ST. W. VANCOUVER, B.C. V6E 2E1
From aerial photography at an approximate scale of 1:54000
taken on July 24 1982

SCALE	1:5000	DATE	OCTOBER 1994
CONTOUR INTERVAL	20 METRES	SHEET	SOUTH
		BLOCK	1

COQUIHALLA PROJECT
HARV #1 CLAIM.
ORTHOPHOTO MAP FIGURE A



GEOLOGICAL BRANCH
ASSESSMENT REPORT

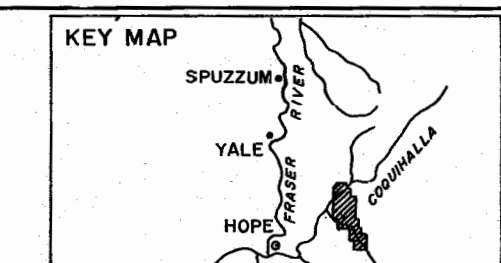
23,483

0 100 200 300 400 500 Meters
SCALE 1:5,000

LEGEND
--- Prospecting Traverse.

To accompany Prospecting report on
the Harv #1 Claim by J.T. Shearer
P. Geo., dated June 15, 1984.
For overlay on Figure 6a
Orthophoto

SHEET INDEX	1	2	3
-------------	---	---	---



THE McELHANNEY GROUP LTD.
1166 Alberni St., Vancouver, B.C. V6C 4R4
From aerial photography of an approximate scale of 1:50,000
SCALE 1:5,000
DATE OCTOBER 1984
CONTOUR INTERVAL 10 METRES
SHEET SOUTH BLOCK No. 23,483

COQUIHALLA PROJECT
HARV 1 CLAIM.
FIG 6