

GEOCHEMICAL, GEOLOGICAL, GEOPHYSICAL and DIAMOND DRILLING

ASSESSMENT REPORT

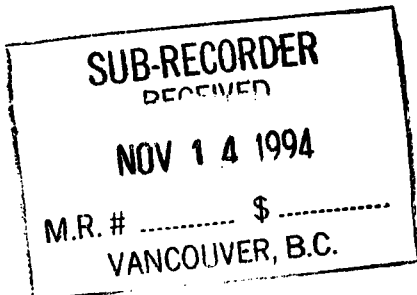
ON THE

BANDIT PROPERTY

ATLIN MINING DIVISION
NTS: 104K/01W
LONG: 132°16'W LAT: 58°04'N

Owned & Operated By:

North American Metals Corp.
1000-700 West Pender Street,
Vancouver, B.C.

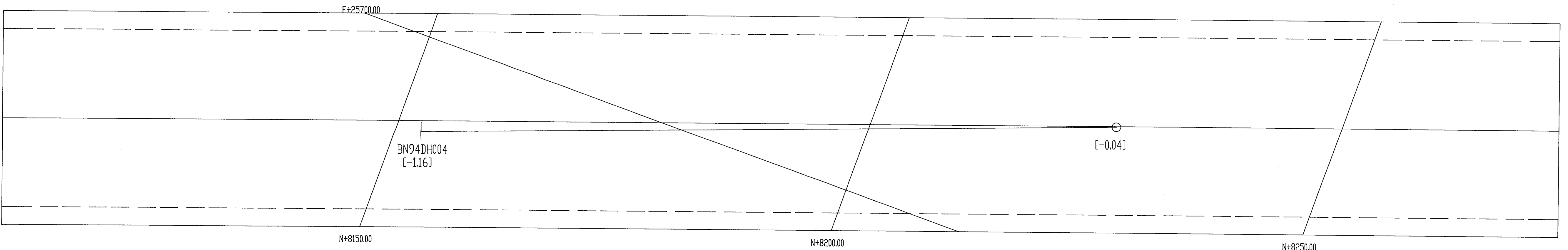
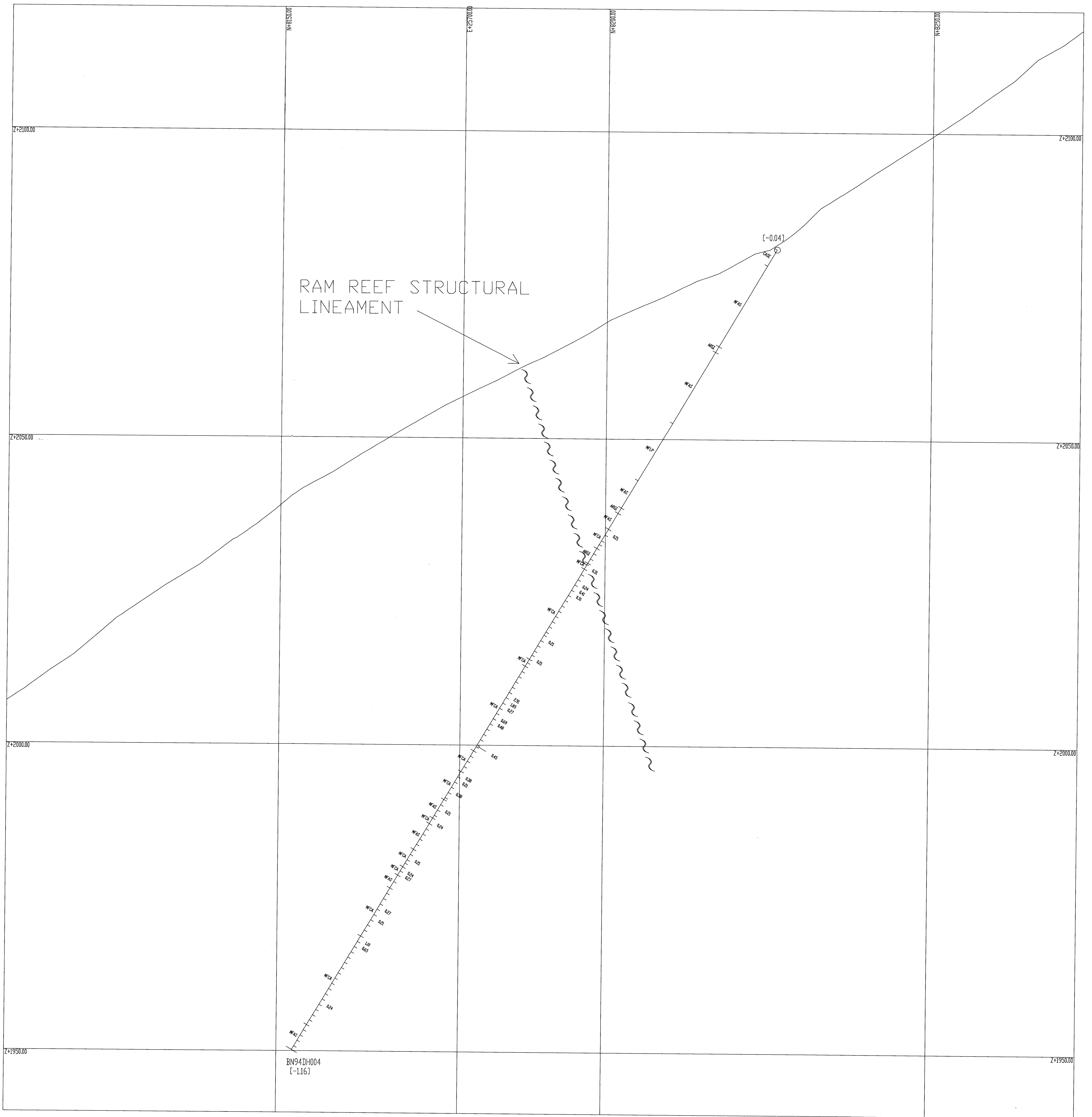


Andrew P. Hamilton

October 1994 **GEOLOGICAL BRANCH**
ASSESSMENT REPORT

23,597

PART 2 OF 2



GEOLOGICAL BRANCH
ASSESSMENT REPORT

23,597

PART 2 OF 2

LEGEND

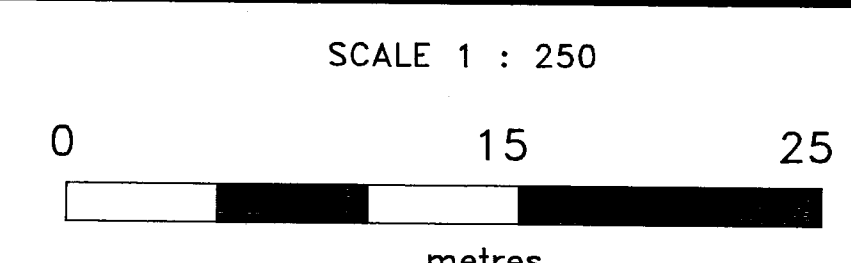
DRILL HOLE TRACE

Lithology
Colour
Texture

Square indicates where
drill hole pierces the
plane of the section.

Au assays in
grams / tonne

T93DH200 Drill hole name
[10.00] Projection distance of drill
hole trace normal to the
section.



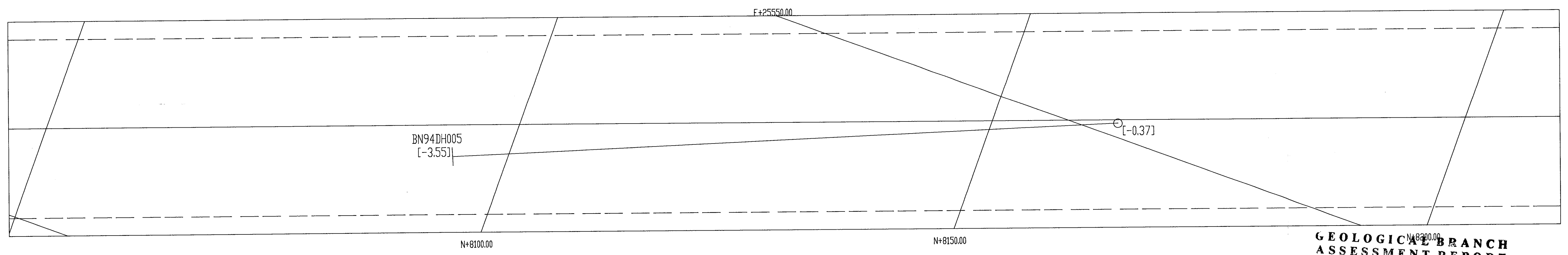
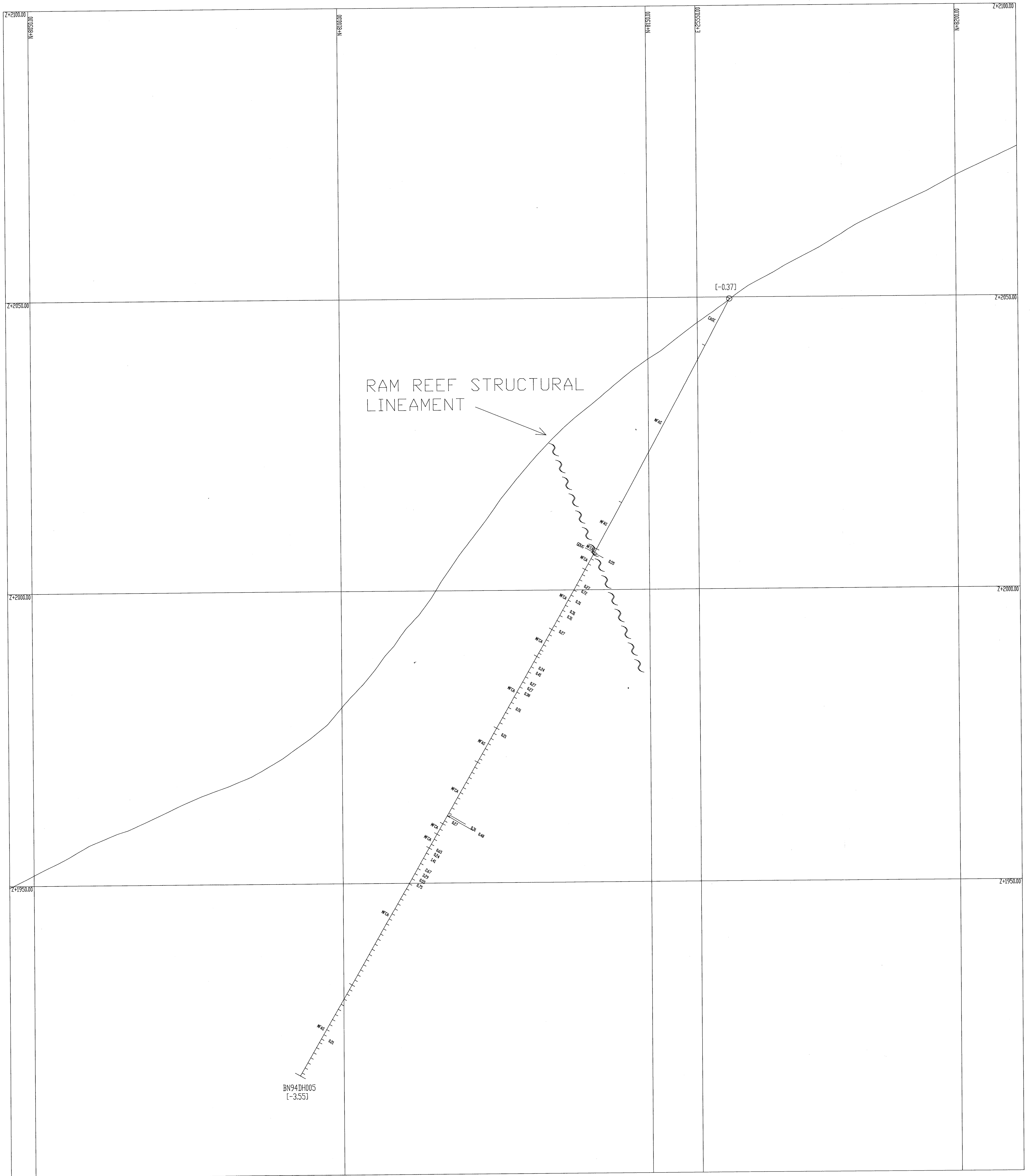
REVISIONS		
No	Item	Date

NORTH AMERICAN
METALS CORP

BANDIT PROPERTY
VERTICAL SECTION
BN93DH004

DRILL HOLE LITHOLOGIES & AU ASSAYS

Figure No: 13 File:
Drawing No:
Approved: Report:
Drawn By: Date:



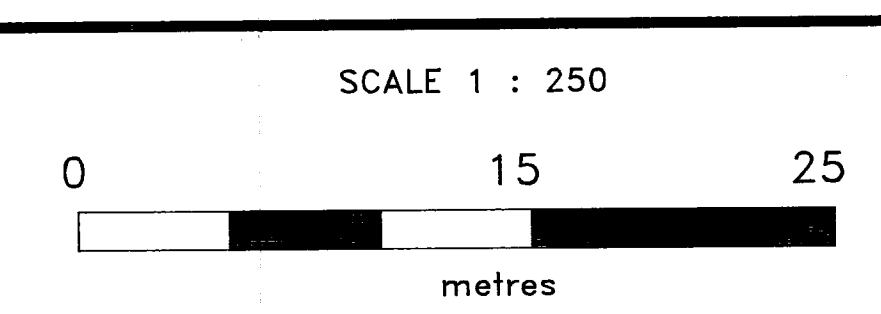
GEOLOGICAL BRANCH
ASSESSMENT REPORT

23,597

PART 2 OF 2

LEGEND

- DRILL HOLE TRACE
- Lithology
- Colour
- Texture
- Square indicates where drill hole pierces the plane of the section.
- Au assays in grams / tonne
- T93DH200 [10.00] Drill hole name
- Projection distance of drill hole trace normal to the section.



REVISIONS		
No.	Item	Date

NORTH AMERICAN METALS CORP

BANDIT PROPERTY
VERTICAL SECTION
BN94DH005

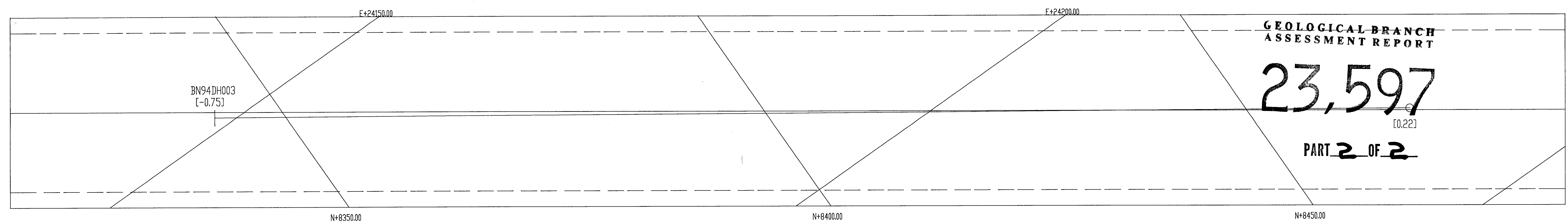
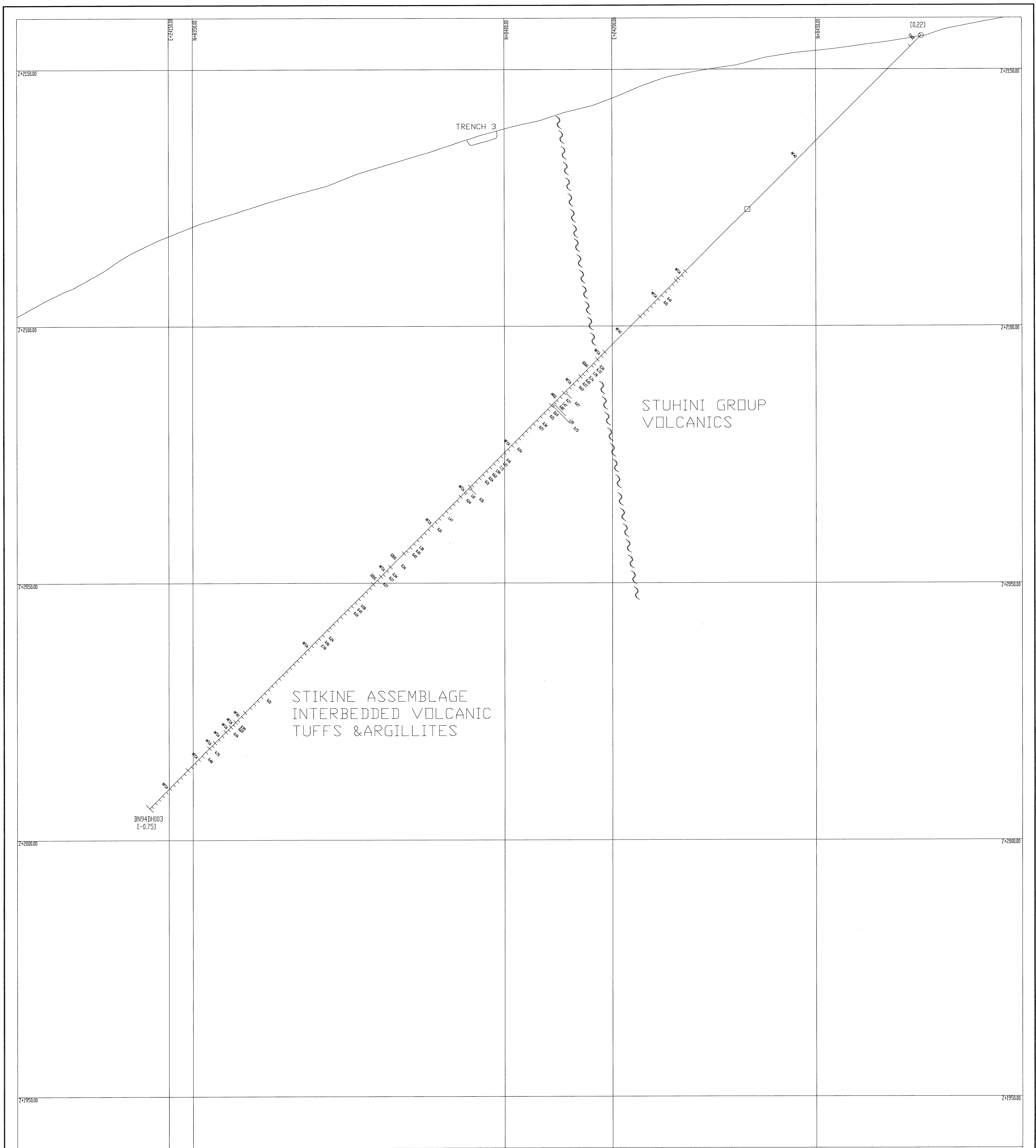
DRILL HOLE LITHOLOGIES & AU ASSAYS

Figure No: 14 File: _____

Drawing No: _____

Approved: _____ Report: _____

Drawn By: _____ Date: _____



LEGEND

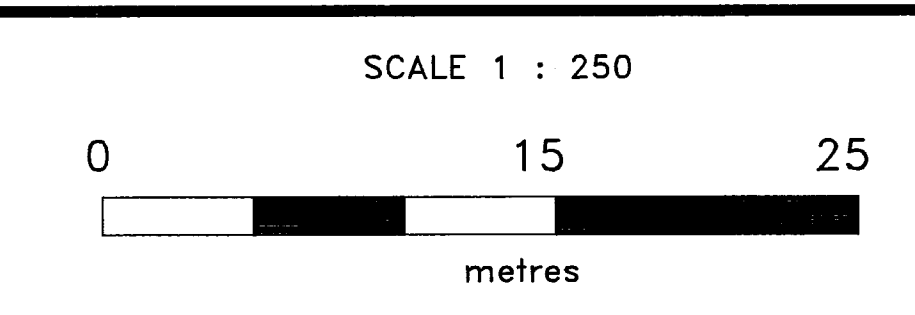
DRILL HOLE TRACE

Lithology
Colour
Texture

Square indicates where drill hole pierces the plane of the section.

Au assays in grams / tonne

T93DH200 Drill hole name
[10.00] Projection distance of drill hole trace normal to the section.



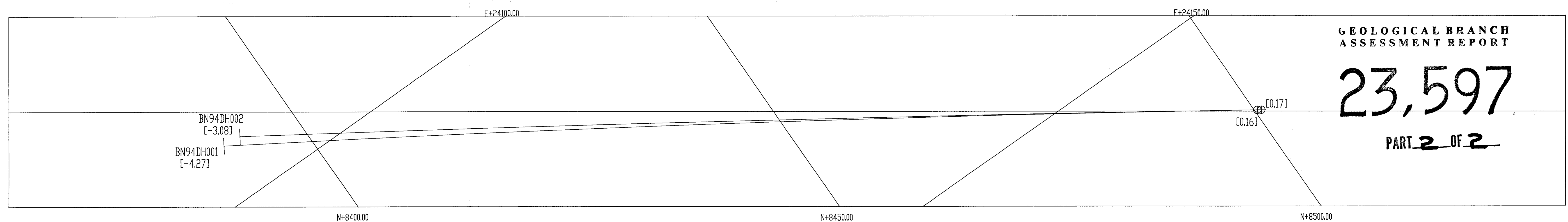
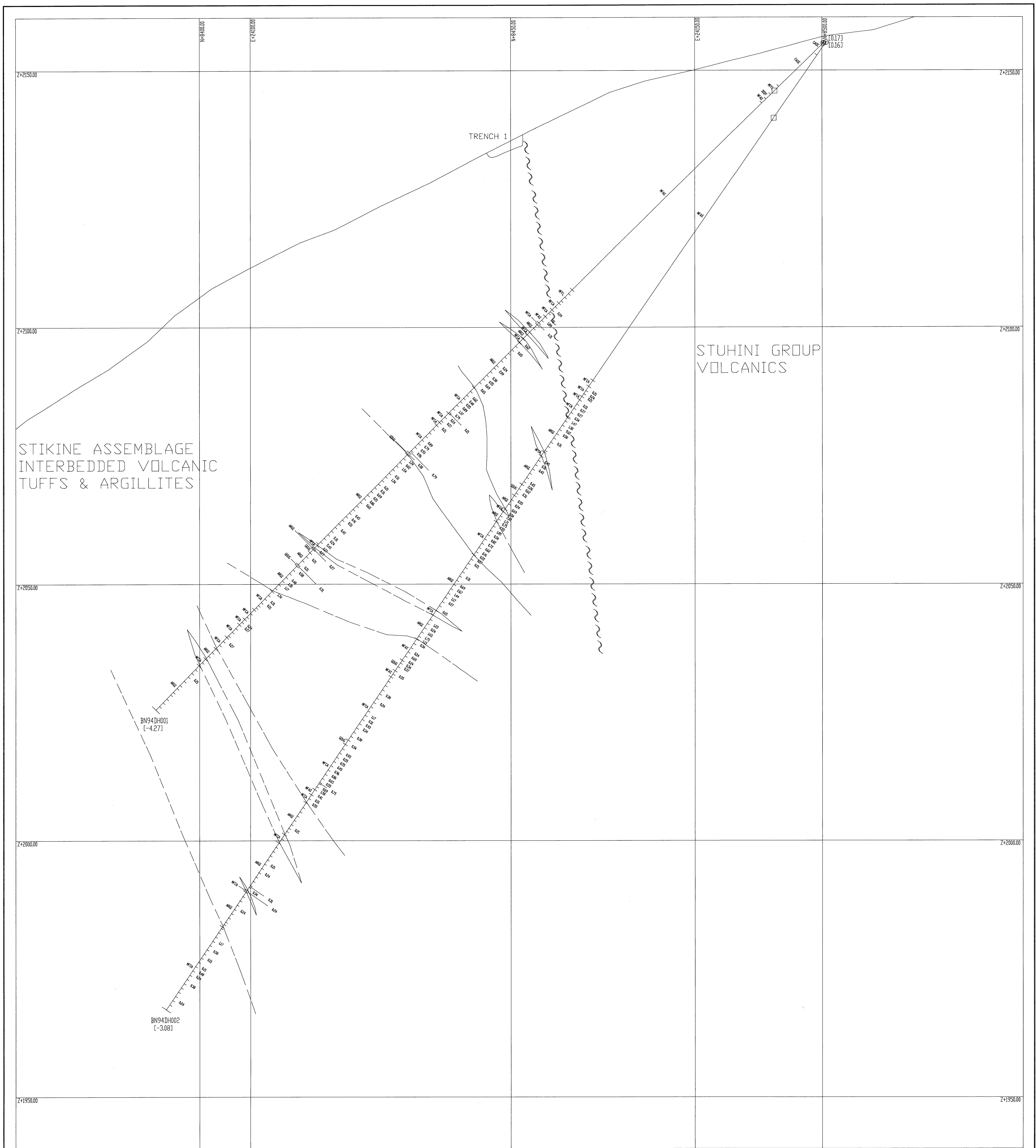
REVISIONS		
No	Item	Date

NORTH AMERICAN METALS CORP

BANDIT PROPERTY
VERTICAL SECTION
BN94DH003

DRILL HOLE LITHOLOGIES & AU ASSAYS

Figure No: 12 File:
Drawing No:
Approved: Report:
Drawn By: Date:



LEGEND

DRILL HOLE TRACE

Lithology
Colour
Texture

Square indicates where drill hole pierces the plane of the section.

Au assays in grams / tonne

T93DH200
[10.00] Drill hole name
Projection distance of drill hole trace normal to the section.

SCALE 1 : 250

0 15 25 metres

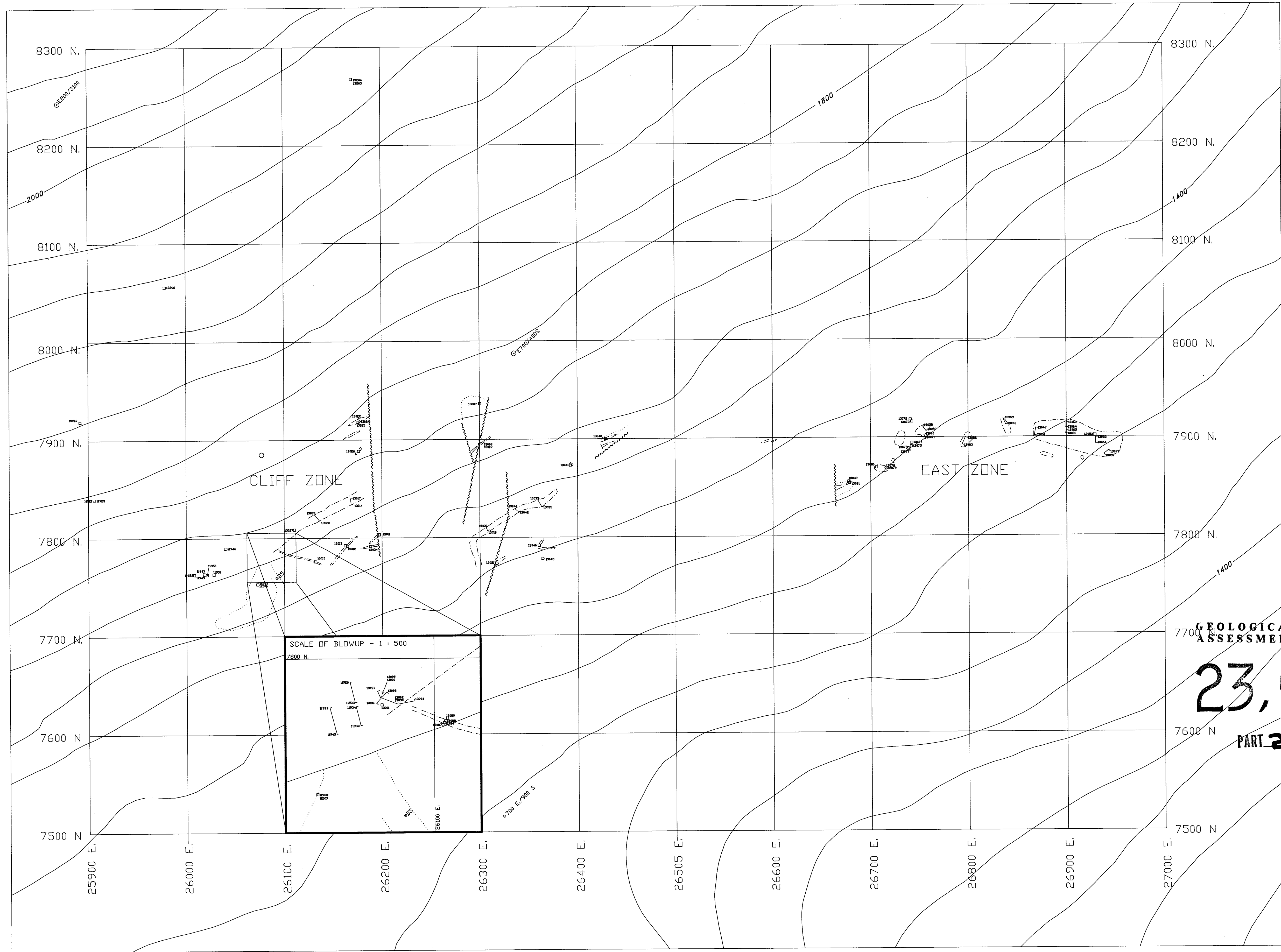
REVISIONS		
No	Item	Date

NORTH AMERICAN METALS CORP

BANDIT PROPERTY
VERTICAL SECTION
BN94DH001
BN94DH002

DRILL HOLE LITHOLOGIES & AU ASSAYS

Figure No: 11 File:
Drawing No:
Approved: Report:
Drawn By: Date:

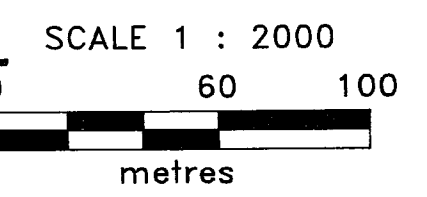


- LEGEND**
- FAULT
 - ALTERATION CONTACT
 - OUTCROP
 - ROCK SAMPLE LOCATION WITH SAMPLE NUMBER
 - COMPOSITE ROCK SAMPLE WITH SAMPLE NUMBERS (START & END)

**GEOLOGICAL BRANCH
ASSESSMENT REPORT**

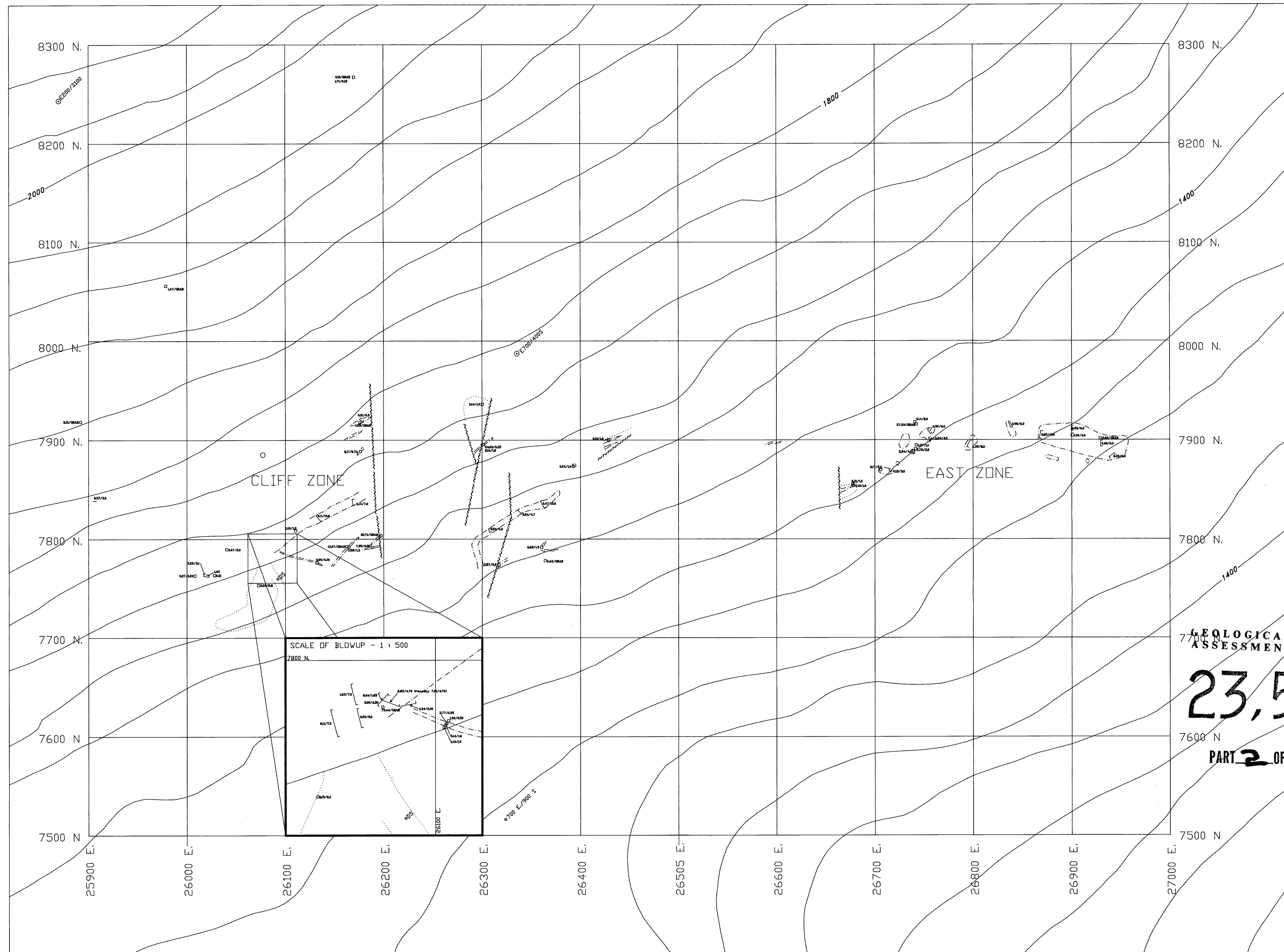
23,597

PART 2 OF 2

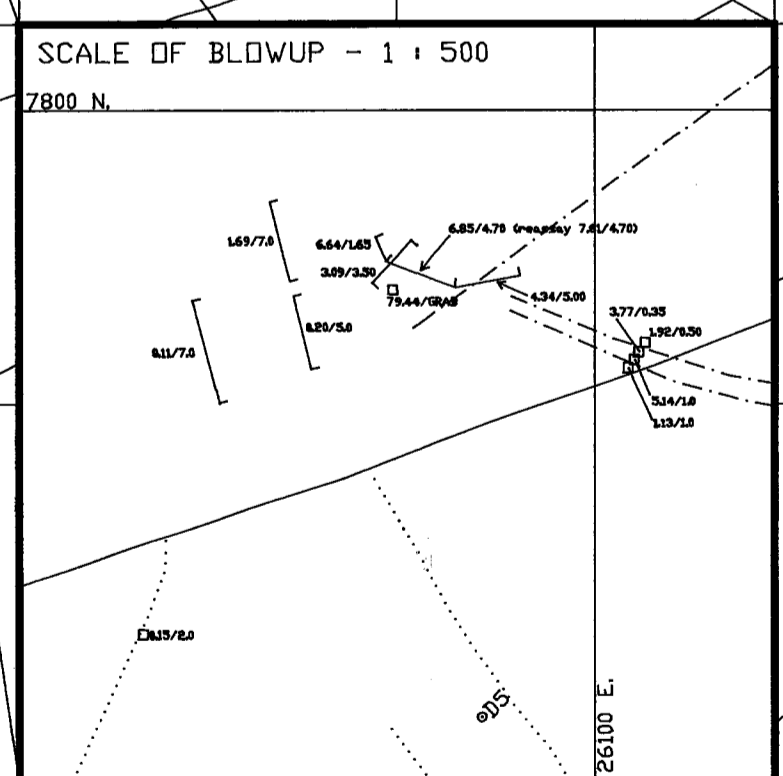


NORTH AMERICAN METALS CORP.
BANDIT PROPERTY
**CLIFF AND EAST ZONE
ROCK SAMPLE LOCATIONS**

FIGURE 9	NTS: 104K01	SCALE 1 : 2000
Drawn by: APH	September 1994	



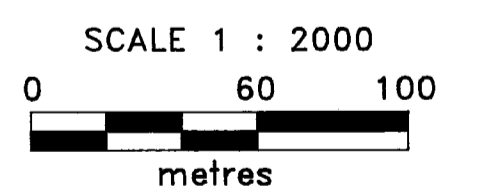
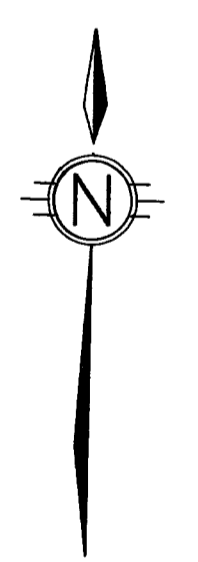
- LEGEND**
- FAULT
 - ALTERATION CONTACT
 - OUTCROP
 - ROCK SAMPLE LOCATION WITH AU gpt/WIDTH m
 - COMPOSITE ROCK SAMPLE WITH AVERAGED AU gpt/WIDTH m



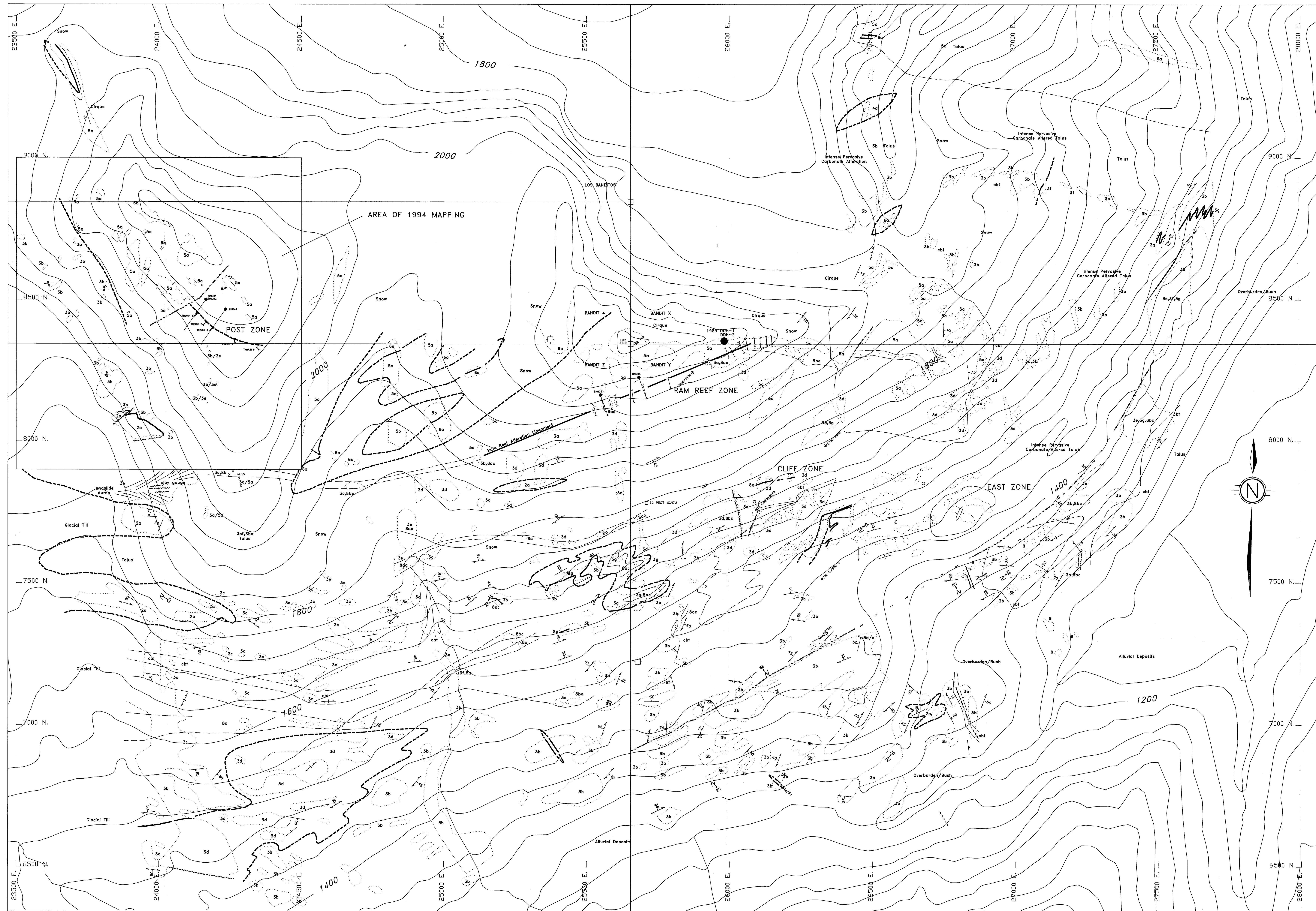
GEOLOGICAL BRANCH
ASSESSMENT REPORT

23,597

PART 2 OF 2



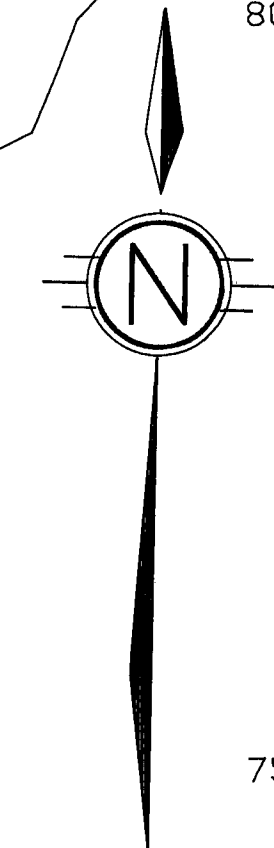
NORTH AMERICAN METALS CORP.		
BANDIT PROPERTY		
CLIFF AND EAST ZONE		
ROCK GEOCHEMISTRY		
FIGURE 10	NTS: 104K01	SCALE 1 : 2000
Drawn by: APH	September 1994	



LEGEND

- Present
 - 9 Cold Sping Deposit
- Age Unknown
 - 8 Albite ± Silica ± Pyrite Alteration
 - a) Intense Pervasive Replacement
 - b) Weak to Moderate Alteration
 - c) Quartz Stockwork Overprint
 - d) Aphanitic (rhyolitic) texture
- Tertiary
 - 7 Sloko Group
 - a) Feldspar Porphyry Dike
- Jurassic-Cretaceous
 - 6 Mafic to Intermediate Intrusives
 - a) Hornblende ± Biotite Granodiorite
- Upper Triassic
 - 5 Stuhini Group (Mafic Volcanics)
 - a) Lithic Fragmental Tuff
 - b) Ash Tuff
 - c) Massive Flows
- Lower or Middle Triassic
 - 4 Mafic to Intermediate Intrusives
 - a) Unfoliated Diorite Dike
 - b) Foliated Diorite Dike
- Pre Upper Triassic
 - 3 Mafic to Intermediate Volcanics and Derived Sediments
 - a) Lithic Fragmental Tuff
 - b) Ash Tuff
 - c) Massive Flows
 - d) Lapilli Tuff
 - e) Chlorite Schist
 - f) Phyllite
 - g) Interbedded Argillite, Wacke and Siltstone
- Permian
 - 2 Limestone
 - a) White/Light Grey Bedded Limestone

- Lithology Contact (known, assumed)
- Alteration Contact
- Fault Zone
- Foliation (F, F')
- Bedding (tops known, tops unknown)
- Lineation (or Fold Hinge)
- Fold Symmetry
- Outcrop
- Claim Post
- Trench
- 1994 Diamond Drill Hole



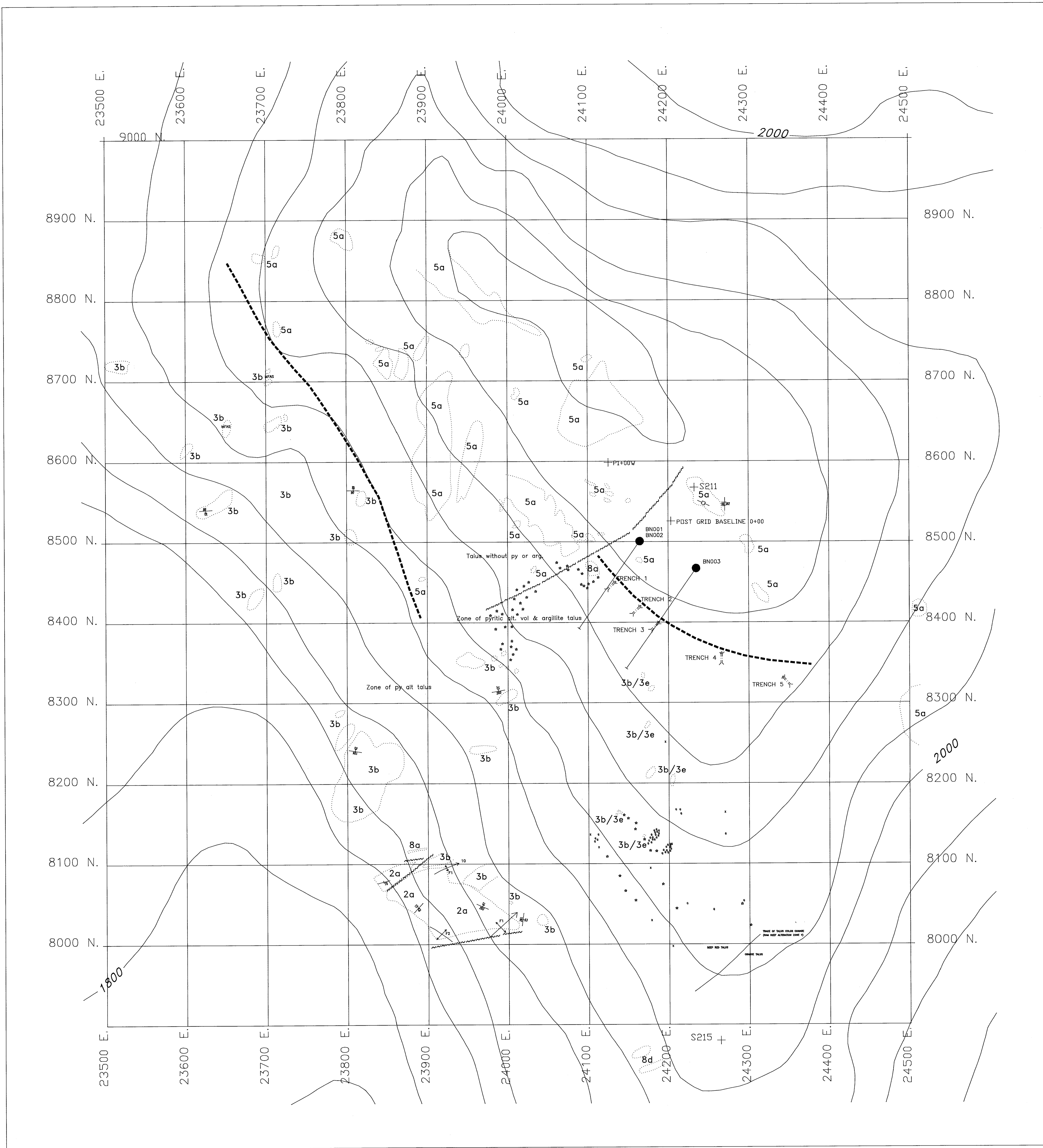
SCALE 1 : 5000
0 150 250
metres

GEOLOGICAL BRANCH
ASSESSMENT REPORT

23,597 PART 2 OF 2
NORTH AMERICAN METALS CORP.

BANDIT PROPERTY
PROPERTY GEOLOGY

FIGURE 3 NTS 104K01 SCALE 1 : 5000
Drawn by: JMR/APH September 1994



LEGEND

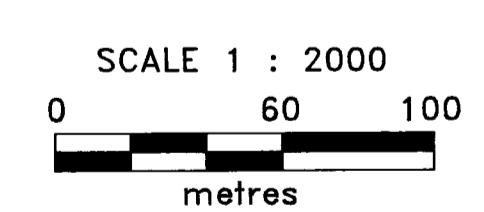
- Present
 - 9 Cold Sping Deposit
- Age Unknown
 - 8 Albite ± Silica ± Pyrite Alteration
 - a) Intense Pervasive Replacement
 - b) Weak to Moderate Alteration
 - c) Quartz Stockwork Overprint
 - d) Aphanitic (rhyolitic) texture
- Tertiary
 - 7 Sioko Group
 - a) Feldspar Porphyry Dike
- Jurassic-Cretaceous
 - 6 Mafic to Intermediate Intrusives
 - a) Hornblende ± Biotite Granodiorite
- Upper Triassic
 - 5 Stuhini Group (Mafic Volcanics)
 - a) Lithic Fragmental Tuff
 - b) Ash Tuff
 - c) Massive Flows
- Lower or Middle Triassic
 - 4 Mafic to Intermediate Intrusives
 - a) Unfoliated Diorite Dike
 - b) Foliated Diorite Dike
- Pre Upper Triassic
 - 3 Mafic to Intermediate Volcanics and Derived Sediments
 - a) Lithic Fragmental Tuff
 - b) Ash Tuff
 - c) Massive Flows
 - d) Lapilli Tuff
 - e) Chlorite Schist
 - f) Phyllite
 - g) Interbedded Argillite, Wacke and Siltstone
- Permian
 - 2 Limestone
 - a) White/Light Grey Bedded Limestone

- CONTACT - defined, inferred
- OUTCROP
- OUTCROP
- TRENCH (1992)
- DIAMOND DRILL HOLE TRACE
- FOLIATION ATTITUDE
- BEDDING ATTITUDE
- PYRITE ALTERED TALUS
- QUARTZ VEIN FLOAT
- ARGILLITE TALUS
- FOLD AXIS SHOWING PLUNGE



GEOLOGICAL BRANCH
ASSESSMENT REPORT

23,597

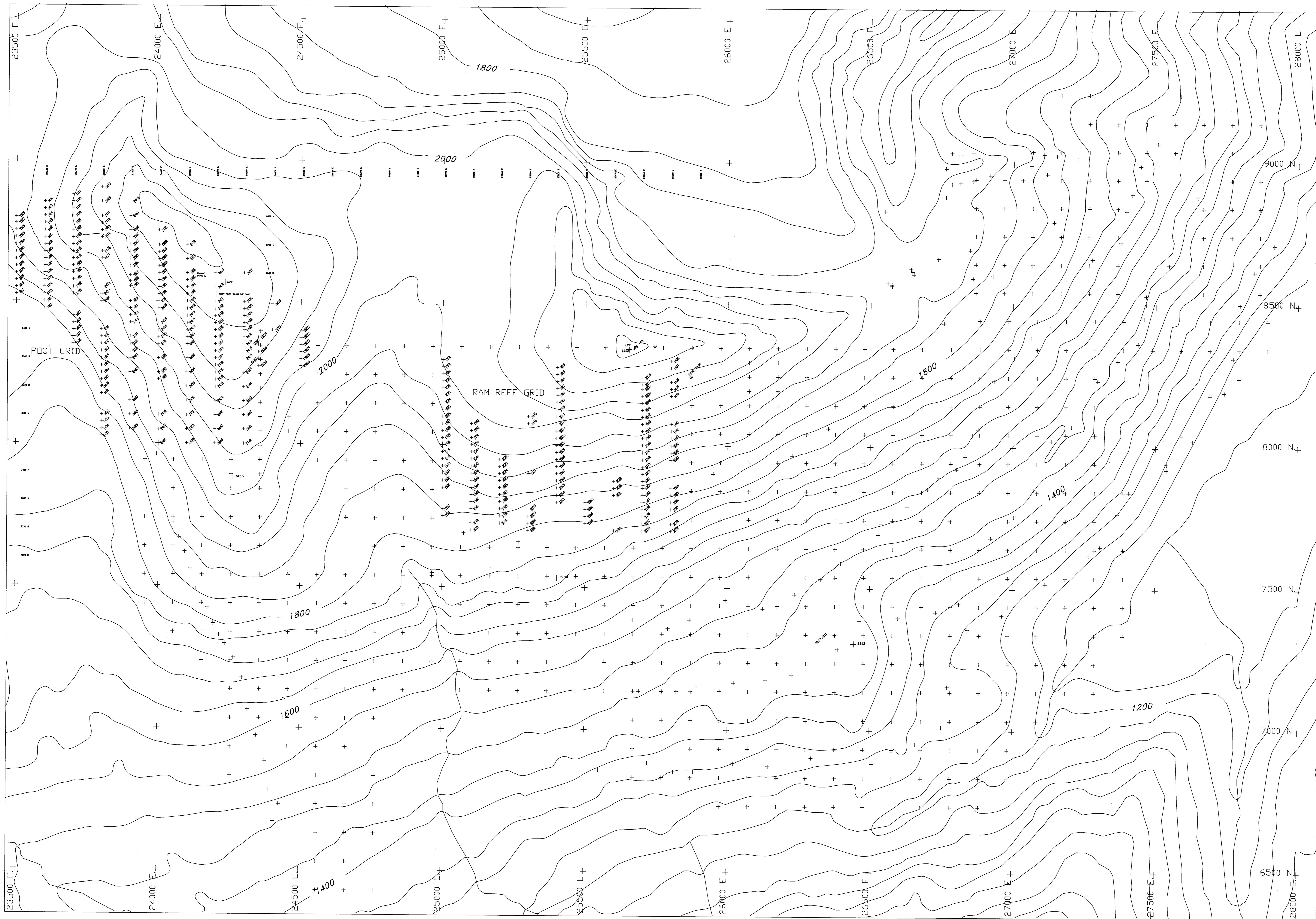


PART 2 OF 2

NORTH AMERICAN METALS CORP.

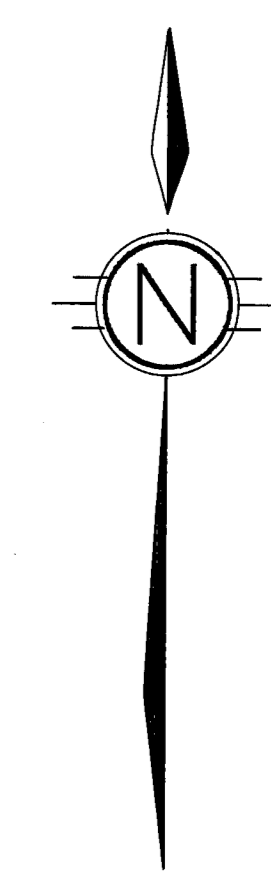
BANDIT PROPERTY
POST ZONE
GEOLOGY

Figure: 4	NTS: 104K01	SCALE 1 : 2000
Drawn by: APH	September 1994	



LEGEND

- + Sample location 1981-1992
- +# 1994 sample location and number



GEOLOGICAL BRANCH
ASSESSMENT REPORT

23,597

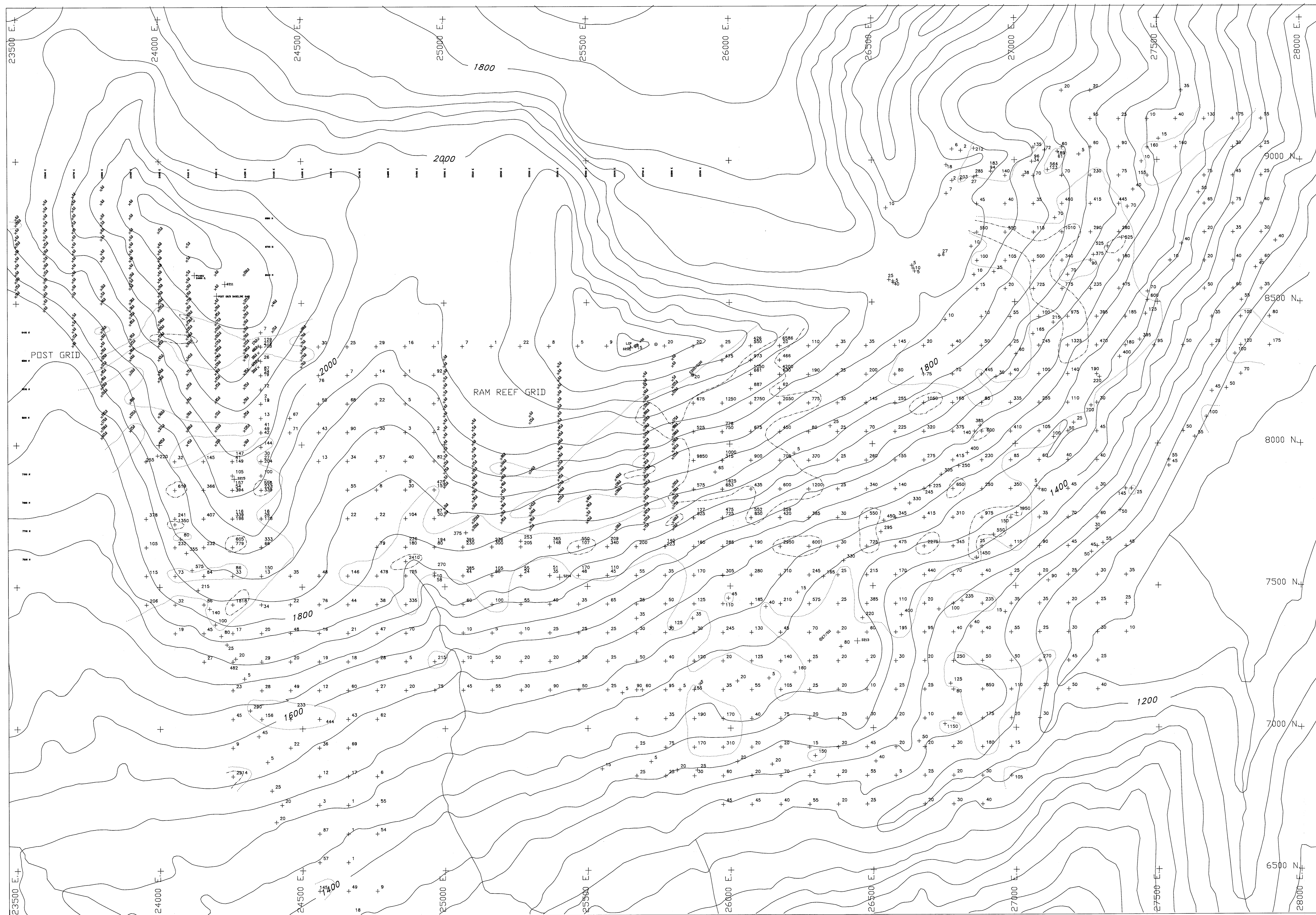
PART 2 OF 2

NORTH AMERICAN METALS CORP.

BANDIT PROPERTY

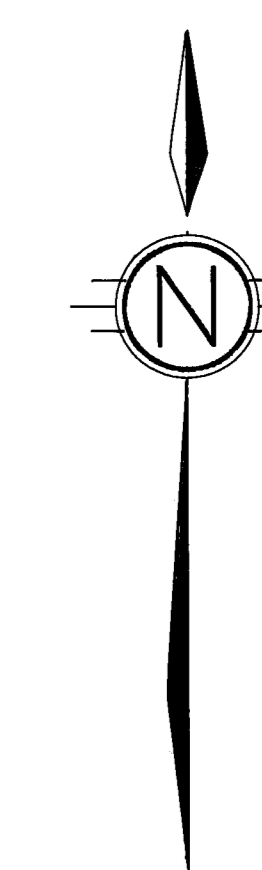
SOIL/TALUS FINE SAMPLE LOCATIONS

FIGURE 6	NTS: 104K01	SCALE 1 : 5000
Drawn by: JMH	November 1992	



LEGEND

- + 175 Gold in ppb 1981-1992 sample
- ⊗ Gold in ppb 1994 sample
- 100 ppb contour
- ⊖ 500 ppb contour



SCALE 1 : 5000
 0 150 250
 METERS
 GEOLOGICAL BRANCH
 ASSESSMENT REPORT

23,597

PART 2 OF 2
 NORTH AMERICAN METALS CORP.
 BANDIT PROPERTY
 GOLD GEOCHEMISTRY
 SOIL/TALUS FINE SAMPLES

FIGURE 7	NTS: 104K01	SCALE 1 : 5000
Drawn by: JMH/APH	November 1992	